

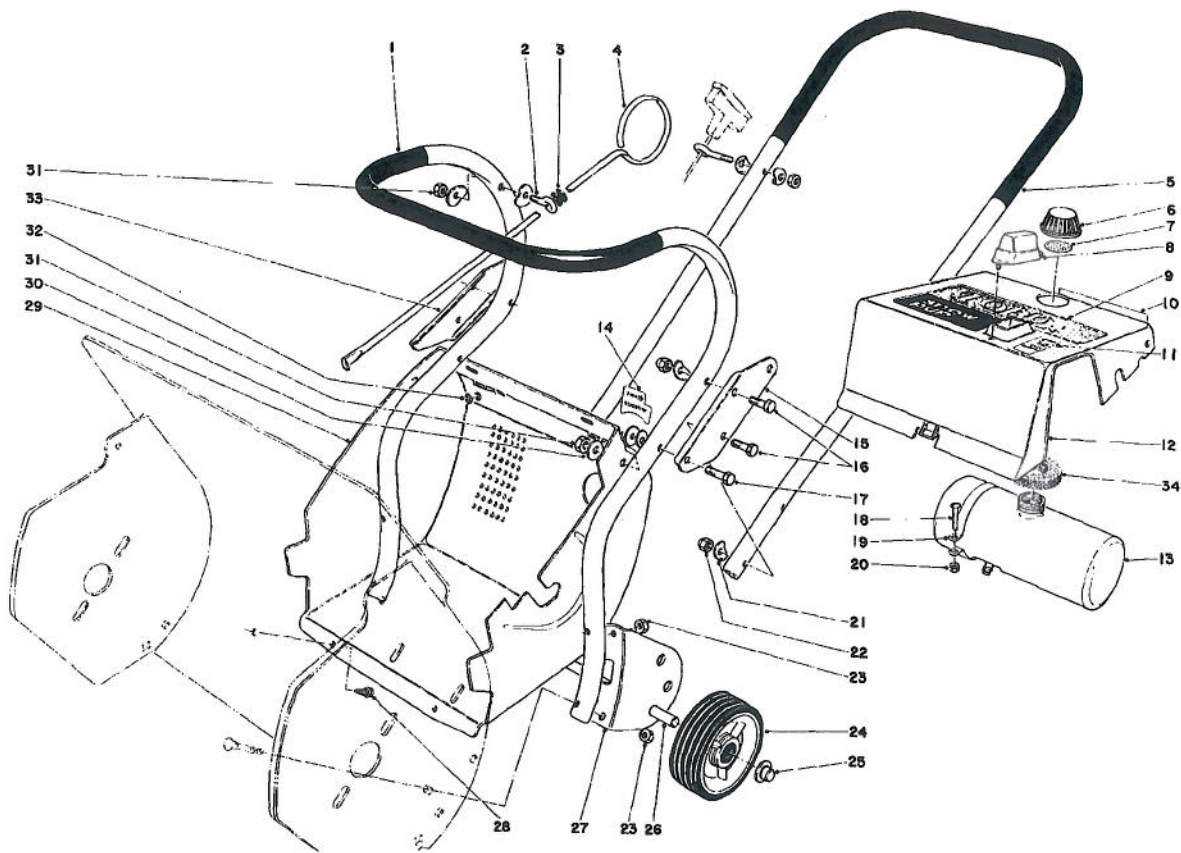
# TORO®

MODEL NO. 31405 - 600001 THRU 700001 &amp; UP

FORM NO. 3310-722 REV. A

## PARTS CATALOG

### 14" SNOW PUP®



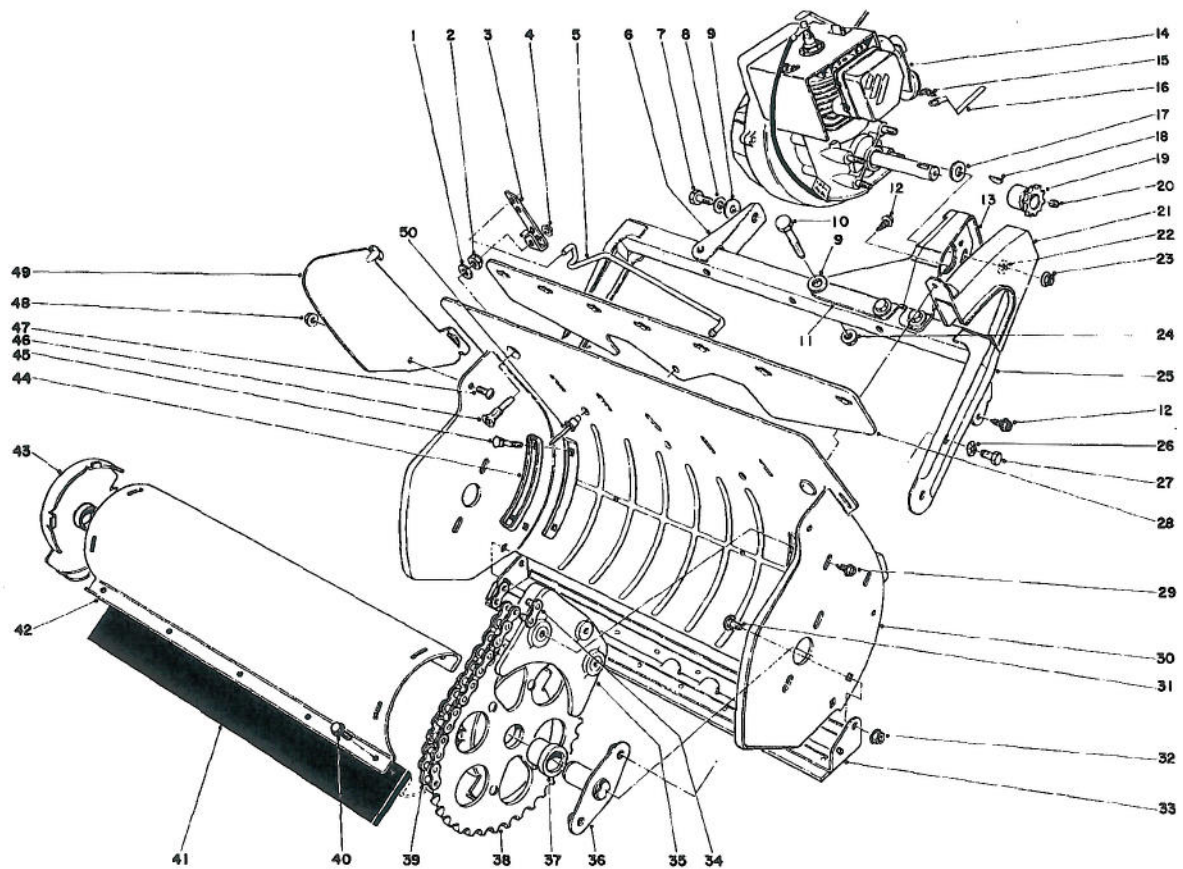
### UPPER MAIN FRAME

Ref. No.	Part No.	Description	No. Used
1	11-6030	Lower Handle	1
2	3-9278	Eye Bolt	2
3	237-73	Grommet	1
4	5-3371	Vane Adjustment Rod	1
5	11-6220	Upper Handle	1
6	23-4380	Gas Cap (Incl. Ref. #7)	1
7	20-4620	Gasket Gas Cap	1
8	5-0452	Boot Upper Shroud	1
9	17-1830	Decal	1
10	25-6520	Decal - Fuel Mix	1
11	23-7280	Decal - Engine Stop	1
12	25-6540	Shroud Upper (Incl. Ref. #8-11)	1
13	23-7880	Gas Tank Assembly (Incl. Ref. # 6 & 7)	1
14	23-7660	Decal - Choke and Primer	1
15	3-7503	Splice Plate	1
16	321-7	Capscrew	6
17	321-9	Capscrew	2

Ref. No.	Part No.	Description	No. Used
18	3251-12	Screw	2
19	2412-24	Tank Strap	2
20	32107-6	Nut	2
21	3-7501	Curved Washer	12
22	32111-7	Cap Nut	6
23	3217-5	Hex Nut	4
24	11-5440	Wheel	2
25	3290-320	Push On - Retainer	2
26	11-5430	Axle	1
27	25-6930	Wheel Bracket	2
28	32104-76	Screw Self Tapping	2
29	5-2459	Lower Shroud (Incl. Ref. #32)	1
30	3256-2	Washer	4
31	32146-17	Locknut	4
32	3290-351	Eyelet	1
33	3-7504	Splice Plate	1
34	25-1610	Foam Pad	1

**ONLY COPY  
DO NOT REMOVE**  
Tech. Publications

COPYRIGHT 1976 BY  
**TheToroCompany**  
MINNEAPOLIS, MINN. 55420 - U.S.A.



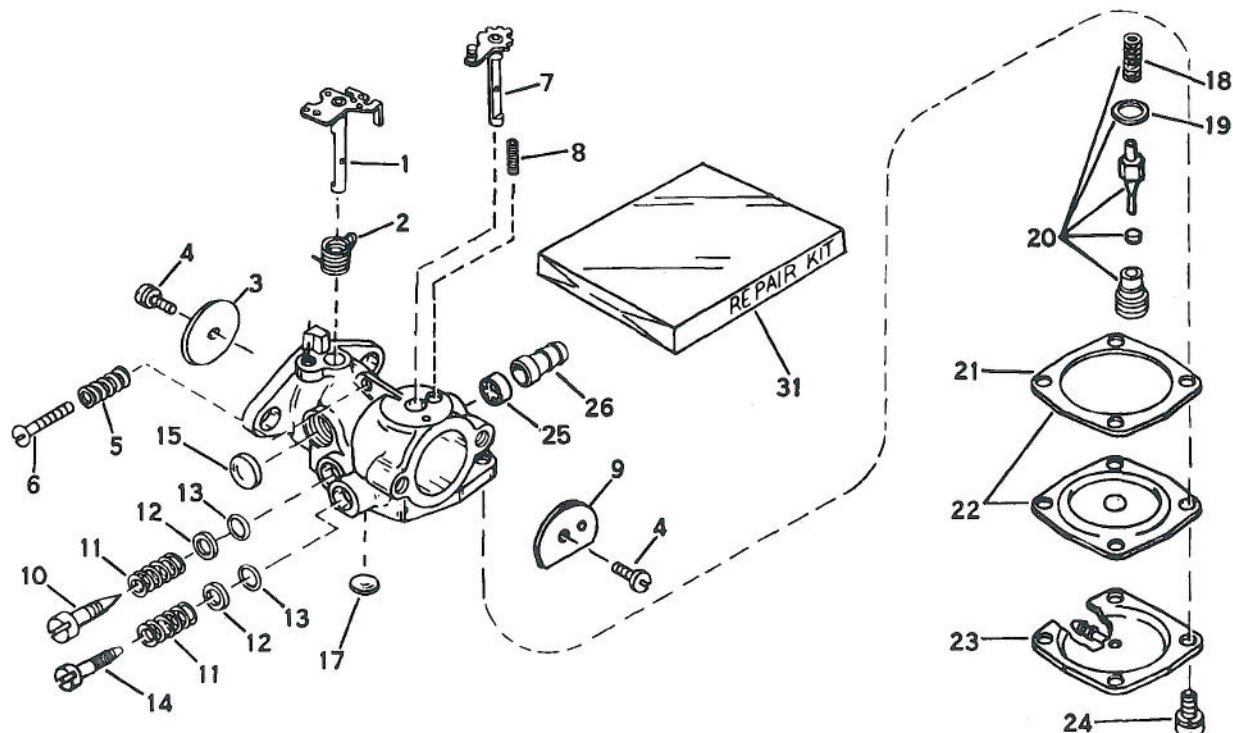
## LOWER MAIN FRAME

Ref. No.	Part No.	Description	No. Used
1	3256-22	Washer	1
2	3296-47	Locknut	1
3	5-3372	Bracket — Vane Adjustment	1
4	3290-337	Retainer — Push On	1
5	11-5410	Linkage Vane Adjustment	1
6	3-7487	Bracket Frame	1
7	3235-18	Hex Hd. Capscrew	1
8	3255-7	Lockwasher	1
9	3256-2	Washer	5
10	321-10	Capscrew	4
11	3-7475	Bracket Engine	1
12	32104-76	Self Tapping Screw	2
13	3-7476	Bracket Engine	1
14	221-498	Engine	1
15	3290-268	Hairpin Cotter	1
16	5-4337	Choke Strap	1
17	3256-23	Washer	4
18	3257-31	Hi Pro Key	1
19	3-9464	Sprocket Engine	1
20	3245-1	Set Screw	2
21	3-7496	Chain Guard	1
22	3255-18	Lockwasher	4
23	32128-16	Locknut	4
24	32128-10	Flange Nut	4
25	11-5340	Frame Assembly (Incl. Ref. # 6, 9-11, 12 & 24)	1
26	3290-257	Washer	4

Ref. No.	Part No.	Description	No. Used
27	321-29	Screw	4
28	17-5060	Vane Mount	1
29	32104-75	Self Tapping Screw	2
30	11-5320	Housing	1
31	3229-10	Carriage Bolt	4
32	32149-2	Locknut	4
33	11-5510	Skid Assembly	1
34	2710-31	Connecting Link	1
35	5-0997	Stripper Assembly	1
36	11-6040	Rotor Shaft Assembly	2
37	11-6160	Rotor Bushing	2
38	11-6080	End Cap Assembly L.H.	1
39	3-7495	Chain	1
40	32144-9	Screw	10
41	11-6130	Rotor Blade	2
42	11-6110	Rotor Shell	2
43	11-6090	End Cap Assembly R.H.	1
44	3-7498	Handle Plate	2
45	3229-4	Carriage Bolt	4
46	3-7511	Screw	1
47	32122-30	Truss Hd. Screw	2
48	32128-17	Locknut	2
49	23-3670	Vane	7
50	3290-278	Pop Rivet	3
*	6-3129	Loose Parts	1
*	25-9150	Replacement Serial Plate	1

\* Not Illustrated



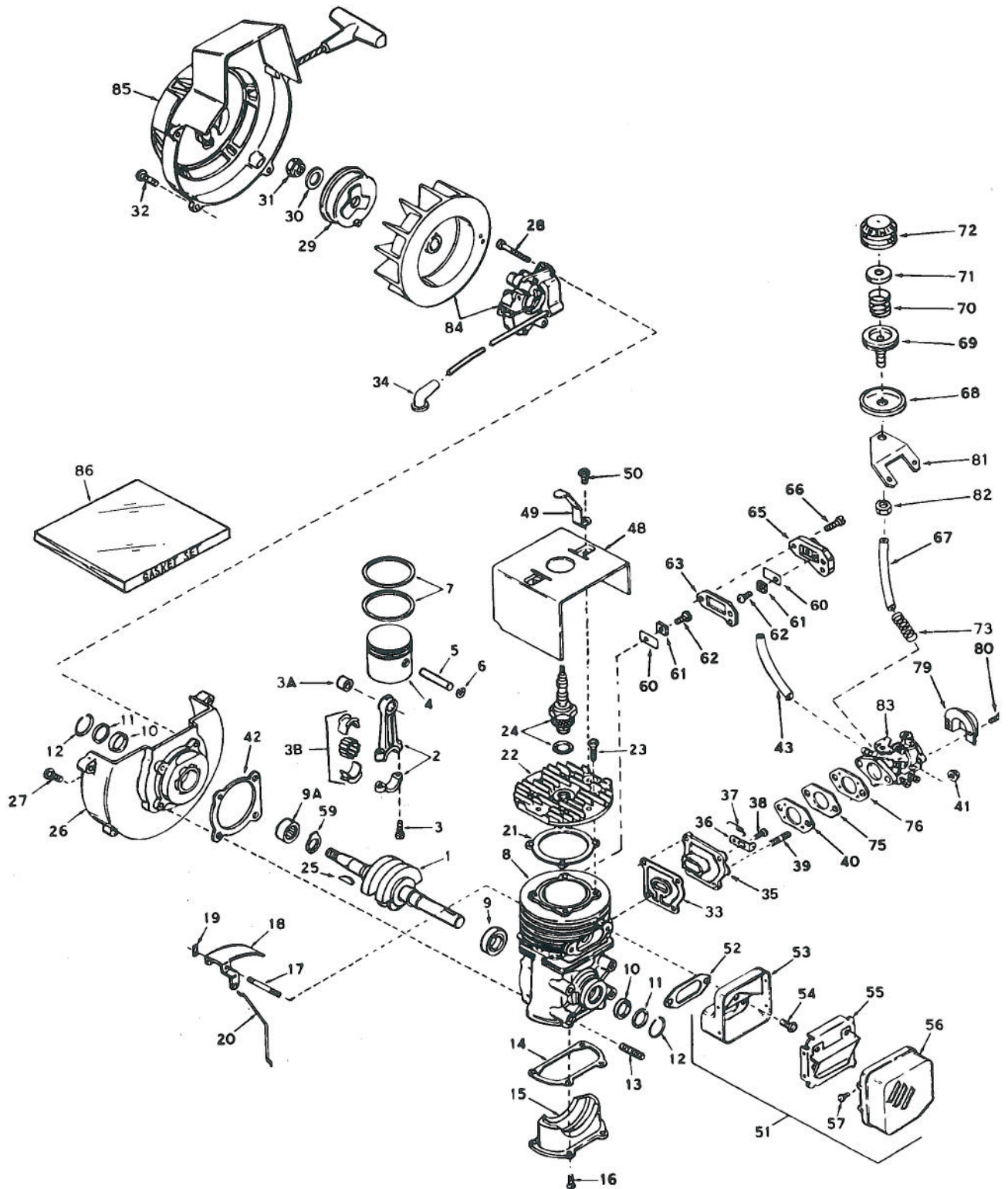


## CARBURETOR NO. 631654B

Ref. No.	Part No.	Description	No. Used
1	631868	Shaft & Lever Assy., Throttle	1
2	631066	Spring, Return	1
3	630733	Shutter, Throttle	1
4	650506	Screw, Throttle & Choke Shutter	2
5	630766	Spring, Idle Speed	1
6	650417	Screw, Idle Regulating	1
7	631869	Shaft & Lever Assy., Choke	1
8	630735	Spring, Choke Positioning	1
9	31837	Shutter, Choke	1
10	631562	Screw, Idle Adjustment	1
11	630738	Spring, Idle Adjustment Screw	2
12	630739	Washer, Idle Adjustment Screw	2
13	*630740	"O" Ring, Idle Adjust. Screw	2
14	630898	Screw, Main Adjustment	1

Ref. No.	Part No.	Description	No. Used
15	*630748	Plug, Welch	1
17	*630746	Plug, Welch	1
18	631049	Spring, Valve	1
19	630742	Gasket, Valve Seat	1
20	*630932A	Inlet Needle, Seat, Spring & Gasket Assy. (Incl. #18&19)	1
21	630750	Gasket, Diaphragm	1
22	*630978	Diaphragm Assy. (Incl. #21)	1
23	631653	Cover, Diaphragm	1
24	650545	Screw, Diaphragm Cover	4
25	631201	Valve, Check	1
26	631803	Fitting, Fuel Inlet	1
31	631893	Repair Kit (Incl. Items Marked *)	1

# ENGINE TECUMSEH MODEL NO. AH520, TYPE 1401J



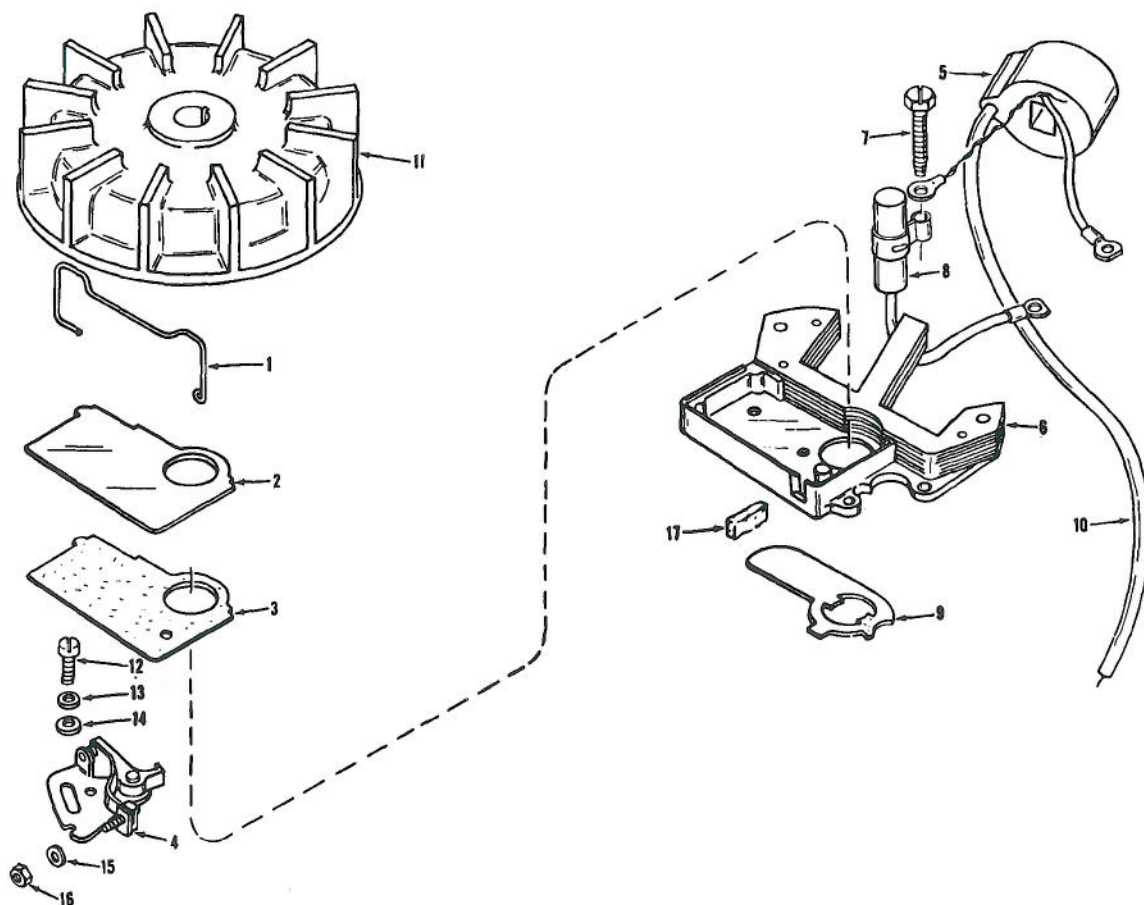
# ENGINE TECUMSEH MODEL NO. AH520 TYPE 1401J

Ref. No.	Part No.	Description	No. Used
1	290468	Crankshaft	1
2	310244	Rod Assembly, Connecting (Incl. # 3,3A & 3B)	1
3	650633	Screw, Connecting Rod	2
3A	530104A	Bearing, Cartridge	1
3B	530149	Bearing & Liner Set, Needle	1
4	310230	Piston	1
5	310178	Pin, Piston	1
6	310167	Ring, Piston Pin Retaining	2
7	310190	Ring Set, Piston	1
8	250195	Block Assembly, Cylinder (Incl. #9, 10 - 13 & 17)	1
9	530133	Bearing, Ball	1
9A	530105	Bearing, Needle	1
10	510105	Seal, Crankshaft	2
11	510106	Retainer, Crankshaft Seal	2
12	510109	Spring, Crankshaft Seal Retainer	2
13	650581	Stud	4
14	*510270	Gasket, Cover	1
15	570370	Plate, Cover	1
16	650579	Screw, Pan Flex Hd.	4
17	490276	Shaft, Air Vane	1
18	490277	Vane Assembly, Air	1
19	490278	Clip, Air Vane	1
20	490279	Link, Governor	1
21	*510262	Gasket, Cylinder Head	1
22	250182	Head, Cylinder	1
23	650477	Screw, Pan Flex Hd.	4
24	33636	Plug, Spark (J17LM or Equivalent)	1
25	650455	Key, Woodruff	1
26	350339	Base Assembly, Shroud (Incl. # 9A - 12)	1
27	650497	Screw, Pan Flex Hd.	4
28	650582	Screw, Pan Flex Hd.	1
29	590382	Cup, Starter	1
30	29544	Washer, Flat	1
31	650577	Nut, Flywheel	1
32	650477	Screw, Pan Flex Hd.	4
33	*510277	Gasket, Port	1
34	610118	Cover, Spark Plug	1
35	570471	Cover, Adapter	1
36	570372	Lever, Adjusting	1
37	490267	Spring, Adjusting Lever	1
38	650576	Screw, Pan Flex Hd.	4
39	650527	Stud	2
40	*510229	Gasket, Carburetor (1/8" Thick)	1

Ref. No.	Part No.	Description	No. Used
41	650457	Nut, Hex	2
42	*510239	Gasket, Shroud Base	1
43	29774	Line, Fuel	1
48	350364	Shroud, Cylinder	1
49	610725	Lever, Stop	1
50	650737	Screw, Hex Washer Hd. Taptite	2
51	390294	Muffler Assembly (Incl. # 53 - 57)	1
52	*510230	Gasket, Exhaust	1
53	390292	Base, Muffler	1
54	650497	Screw, Pan Flex Hd.	3
55	390295	Baffle, Muffler	1
56	390296	Cover, Muffler	1
57	650578	Screw, Hex Slotted Hd. S.T. Type "B"	4
59	530132	Washer, Thrust	1
60	470136	Reed, Compression Release	2
61	470137	Plate, Reed Hold Down	2
62	650654	Screw, Pan Hd. Taptite	2
63	*510263	Gasket, Compression Release	1
65	570437	Cover, Compression Release	1
66	650576	Screw, Pan Flex Hd.	2
67	32180A	Line, Primer	1
68	32312	Retainer, Primer Bulb	1
69	32184	Body, Primer	1
70	570443	Spring, Primer Bulb	1
71	570444	Washer, Primer Bulb	1
72	570442	Bulb, Primer	1
73	570456	Spring, Primer Line Support	1
75	570438A	Spacer	1
76	*510241	Gasket, Carburetor (1/16" Thick)	1
79	570434	Baffle, Air	1
80	650229	Screw, Rd. Hd. Sems	2
81	570480	Mounting Bracket, Primer	1
82	650456	Nut, Hex	1
83	631654B	Carburetor (Incl. # 76)	1
84	610659	Magneto (The complete mag- neto is not available as an assembly. The magneto number is shown for ref- erence purposes only. Order component parts individually, as shown in parts list.)	1
85	590398B	Shroud & Starter Assembly	1
86	510264C	Gasket Set (Incl. Items Marked*)	1
†	710324B	Replacement Engine	1

†Not Illustrated



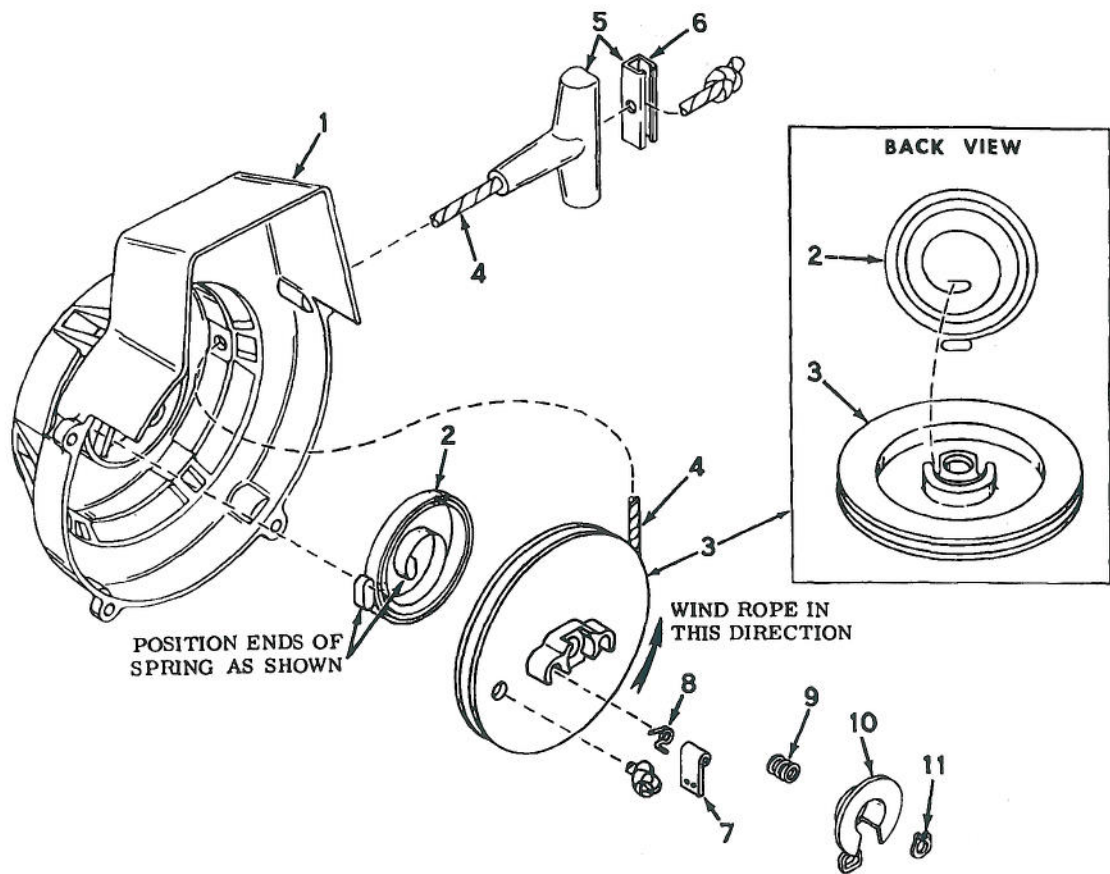


## MAGNETO NO. 610659

Ref. No.	Part No.	Description	No. Used
1	610591	Dust Cover Spring	1
2	610589	Dust Cover	1
3	610590	Dust Cover Gasket	1
4	610587	Breaker Point Assembly	1
5	610657	Coil Assembly	1
6	610585	Core & Stator Plate Group	1
7	610593	Condenser Screw	1
8	610588	Condenser Assembly	1
9	610594	Sealing Washer	1

Ref. No.	Part No.	Description	No. Used
10	30554	Lead Wire	1
11	610660	Flywheel	1
12	610249	Breaker Screw	1
13	610251	Lockwasher	1
14	610274	Flatwasher	1
15	610385	Terminal Washer	1
16	610408	Terminal Nut	1
17	610592	Cam Felt	1
	610656	Stator Plate Assy. (Less Lead Wire)	1

\*The complete magneto is not available as an assembly. The magneto number is shown for reference purposes only. Order component parts individually, as shown in parts list.



## SHROUD AND REWIND STARTER NO. 590398B

Ref. No.	Part No.	Description	No. Used
1	590399	Housing Assy., Shroud & Starter	1
2	590384	Spring, Rewind	1
3	590385A	Pulley, Starter Rope (Incl. No. 8)	1
4	590456	Rope, Starter (Length 72")	1
5	590387	Handle Assembly, Starter Rope (Incl. No. 6)	1

Ref. No.	Part No.	Description	No. Used
6	590388	Insert, Handle	1
7	590389	Dog, Starter	1
8	590418	Return Spring, Left Hand Wound	1
9	590391	Spring, Brake	1
10	590392	Brake	1
11	590393	"E" Ring, Truarc	1



## PRODUCT CHANGES

In an effort to make improvements available to TORO owners as quickly as possible, minor changes are incorporated into Toro's products from time to time that do not become immediately shown in the Parts Catalog. If such a change apparently has been made in your unit, which is not reflected in your manual, see your TORO Distributor or his Authorized TORO Service Dealer for information and part numbers.

## IDENTIFICATION AND ORDERING

### Model and Serial Numbers

The Snow Pup has two identification numbers: a model number and a serial number. The two numbers are stamped on a decal which is located on top right hand side of frame. In any correspondence concerning the Snow Pup, supply model and serial numbers to assure that correct information and replacement parts are obtained.

To order replacement parts from an Authorized TORO Service Dealer, supply the following information:

1. Model and serial numbers of the Snow Pup.
2. Part number, description, and quantity of part(s) desired.

**NOTE:** Do not order by reference number if a parts catalog is being used; use the PART NUMBER.

**Keep Your TORO All Toro**



**Insist on Genuine Toro Parts**

## THE TORO PROMISE

It is Toro's policy to design and produce TORO products to provide our customers with a high level of performance and durability in normal operation. Our products, however, are produced in high volume, and it is inevitable that occasionally a unit will reach a customer with a defect in materials or workmanship which causes the unit to fall below the normal high

level of TORO performance. Invariably, such a defect will be noticed in a residential product within one year after purchase. Recognizing this possibility, Toro has established a simple guarantee policy and procedure that is intended to assure customer satisfaction. This guarantee statement is as follows:

### The Toro Promise

*A Full One Year Warranty*

*The Toro Company promises to repair any TORO Product if defective in materials or workmanship. The following time periods from the date of purchase apply:*

Residential Product . . . . . 1 year  
Residential Products Used Commercially . . 45 days

*The costs of parts and labor are included, but the customer pays the transportation costs. Just return any residential product to an Authorized TORO Service Dealer or TORO Distributor.*

Should the customer feel that a product is defective and wish to rely on The Toro Promise, the following procedure is recommended:

1. Contact any Authorized TORO Service Dealer or Distributor, but preferably the dealer or distributor from whom you purchased the product.
2. He will instruct you to either return the product to him, or tell you the name and address of your nearest Authorized TORO Service Dealer or Distributor if the product is to be returned to such a dealer or distributor.
3. Bring the product and your original sales slip, or

other evidence of purchase date, to the service dealer or distributor.

4. The servicing dealer or distributor will inspect the unit, advise you whether the product is defective and, if so, make all repairs necessary to correct the defect without extra charge to the customer.

If for any reason the customer is dissatisfied with the dealer's or distributor's analysis of the defect or the service he performs, he can contact us. Write:

**TORO "Customer Care" Department  
8111 Lyndale Avenue South  
Minneapolis, Minnesota 55420**