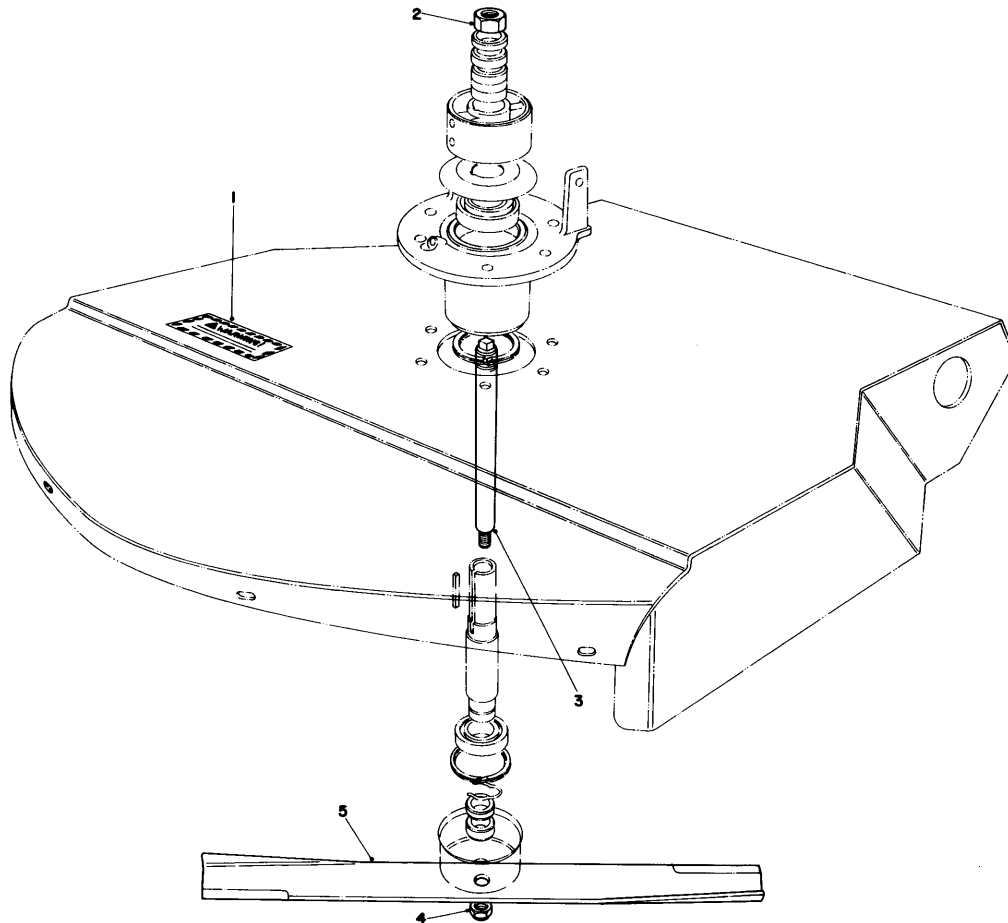


TORO

MODEL: 25-9550

**INSTALLATION
INSTRUCTIONS****BLADE KIT**

FOR 31" WHIRLWIND®



Ref. No.	Part No.	Description	No. Used
1	25-0440	Decal, Warning	1
2	3217-37	Hex Nut	1
3	25-9540	Cutter Arm Shaft	1

Ref. No.	Part No.	Description	No. Used
4	5-0887	Lock Nut	1
5	25-9530	Blade	1

INSTALLATION INSTRUCTIONS



CAUTION

Disconnect high tension wire from spark plug and move traction drive and blade drive controls in neutral — disengaged position.

Remove Cutter Arm Shaft From Spindle Housing

Tools Required: 1-5/16-Inch Open End Wrench and 1/2-Inch Open End Wrench

1. Remove nut from top of cutter arm shaft by using a wrench on the nut and on the square at top of shaft.

NOTE: Do not use the old nut because it will be replaced by a new left hand thread nut when new blade kit parts are installed.

2. Tip mower housing backward and block it in place so it cannot fall.
3. Pull blade and cutter arm shaft assembly out of spindle housing.

NOTE: To maintain desired height-of-cut setting when new parts are installed, remember where spacers were positioned.

Remove Blade From Cutter Arm Shaft

Tools Required: 15/16-Inch Socket

1. Put square end of cutter arm shaft in a vise.
2. Remove lock nut retaining blade on cutter arm shaft.

NOTE: Do not use the old cutter arm shaft, blade, or lock nut because they will be replaced by a new left hand thread lock nut, new blade, and new cutter arm shaft. However, the cup and any spacers that were on the original shaft must be used again.

Install Cutter Blade on Cutter Arm Shaft

Tools Required: Torque Wrench and 15/16-Inch Socket

1. Put square end of new cutter arm shaft in a vise.
2. Install the cup, and new blade on new cutter arm shaft (Ref. 5). Secure all parts in place with new left hand thread lock nut (Ref. 4).
3. Tighten lock nut (Ref. 4) to 75-100 ft-lb.

Install Blade and Cutter Arm Shaft Assembly

Tools Required: Torque Wrench, 1/2-Inch Open End Wrench, and 1-5/16-Inch Open End Torque Wrench Adaptor

1. Install any spacers, which were removed during disassembly, on the shaft.
2. Slide blade and cutter arm shaft assembly (Ref. 3) through spindle housing.
3. Secure all parts in place with new left hand thread nut (Ref. 2).
4. Tighten nut (Ref. 2) to 75-100 ft-lb.

IMPORTANT: Install WARNING decal (Ref. 1) on mower housing in position shown.

Change Maximum Engine Speed

Maximum engine speed must be changed when the new blade is used. Therefore, reduce maximum engine speed to 2800 rpm, ± 150 rpm.