



Roller Shaft Kit

ProStripe® 560 Mower

Model No. 134-6409

Installation Instructions

Loose Parts

Use the chart below to verify that all parts have been shipped.

Description	Qty.	Use
No parts required	—	Prepare the machine.
Shaft	1	Install the kit.
Washer (M6 x 18)	1	
Bolt (M6 x 25)	1	
No parts required	—	Finish the installation.

Preparing the Machine

⚠ WARNING

Tipping the machine may cause the fuel to leak. Fuel is flammable and explosive, and can cause personal injury.

Run the engine dry or remove the fuel with a hand pump; never siphon the fuel.

1. Run the engine dry or remove the fuel with a hand pump.
2. Move the machine to a level surface, shut off the engine, wait for all moving parts to stop, and allow the engine to cool.
3. Disconnect the spark-plug wire from the spark plug; refer to the *Operator's Manual* for your machine.



Installing the Kit

1. If the grass bag is on the machine, remove the it.
2. Remove the chain cover from the machine by removing the 2 chain-cover bolts (Figure 1).
Note: Retain the chain cover and 2 chain-cover bolts for later installation.
3. Remove and retain the existing circlip, thrust washer, sprocket, and chain from the gearbox post (Figure 1).

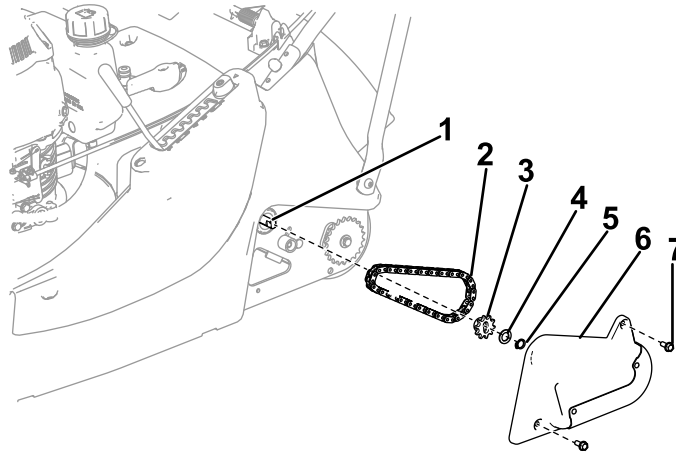


Figure 1

g349697

- | | |
|------------------|--------------------------|
| 1. Gearbox post | 5. Circlip |
| 2. Chain | 6. Chain cover |
| 3. Sprocket | 7. Chain-cover bolts (2) |
| 4. Thrust washer | |

-
4. Remove the roller and all corresponding parts from the machine.

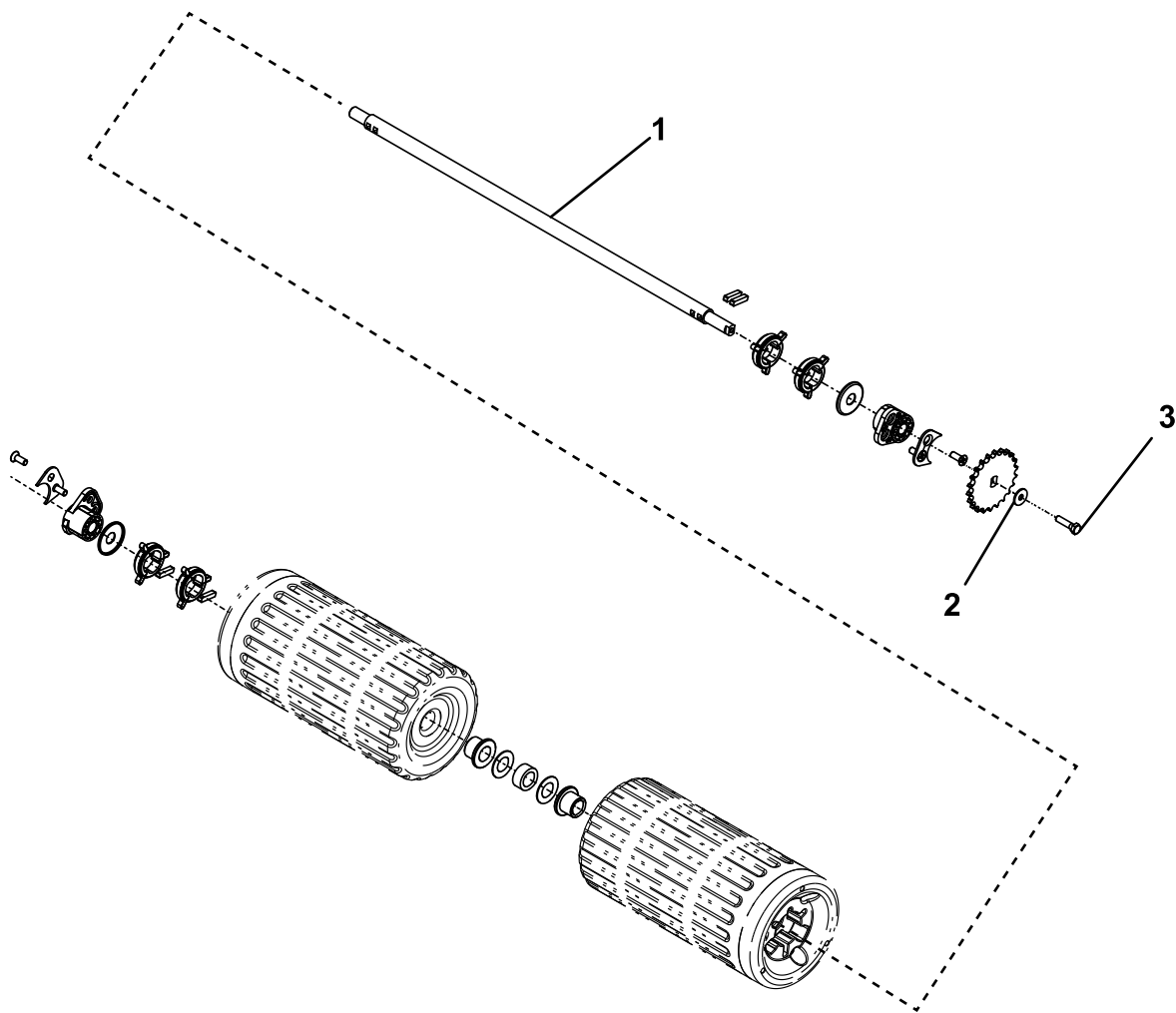
Note: Retain all corresponding parts except the shaft, washer (M6 x 18), and bolt (M6 x 25).

5. Fill the cam drive cavity with grease that has superior water resistance such as Fuchs Renolit CZ2 grease or similar.

Important: Do not use standard grease as this may allow moisture to reduce lubricant efficiency.

6. Replace the shaft, washer (M6 x 18), and bolt (M6 x 25) as shown in Figure 2.

Note: Apply thread-locking compound on the bolt and torque it to 11 N·m (8 ft-lb).



g356632

Figure 2

- 1. Shaft (Qty. 1)
- 2. Washer (M6 x 18) (Qty. 1)
- 3. Bolt (M6 x 25) (Qty. 1)

- 7. When shimming the rear roller, tighten only to remove end float. Do not tighten to the point where the roller locks up or the roller has too much resistance when rotating.

Finishing the Installation

1. Install the previously removed chain, sprocket (10T), thrust washer (20 mm), and circlip onto the gearbox post as shown in [Figure 3](#).
2. Secure the previously removed chain cover onto the machine with the 2 corresponding bolts ([Figure 3](#)).

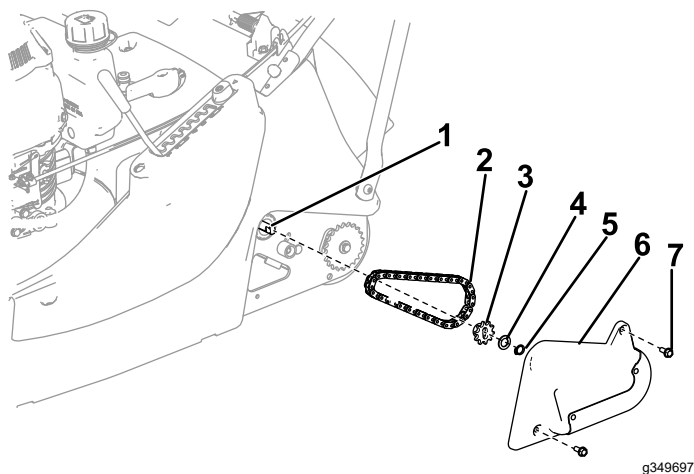
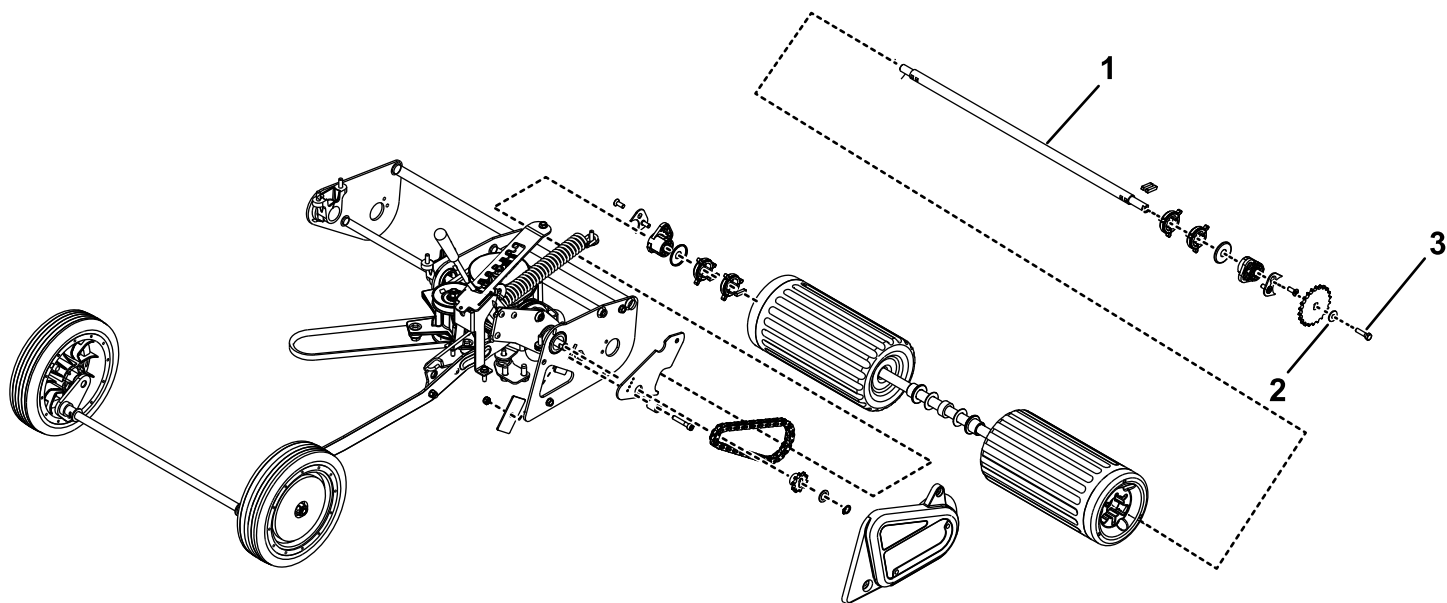


Figure 3

- | | |
|------------------|--------------------------|
| 1. Gearbox post | 5. Circlip |
| 2. Chain | 6. Chain cover |
| 3. Sprocket | 7. Chain-cover bolts (2) |
| 4. Thrust washer | |
-



g356633

Parts

Ref.	Part Number	Qty.	Description
1	134-5253	1	Roller shaft
2	111-7679	1	Washer (M6 x 18)
3	ZBHIF025U	1	Bolt (M6 x 25)

Notes:

Notes:



Count on it.