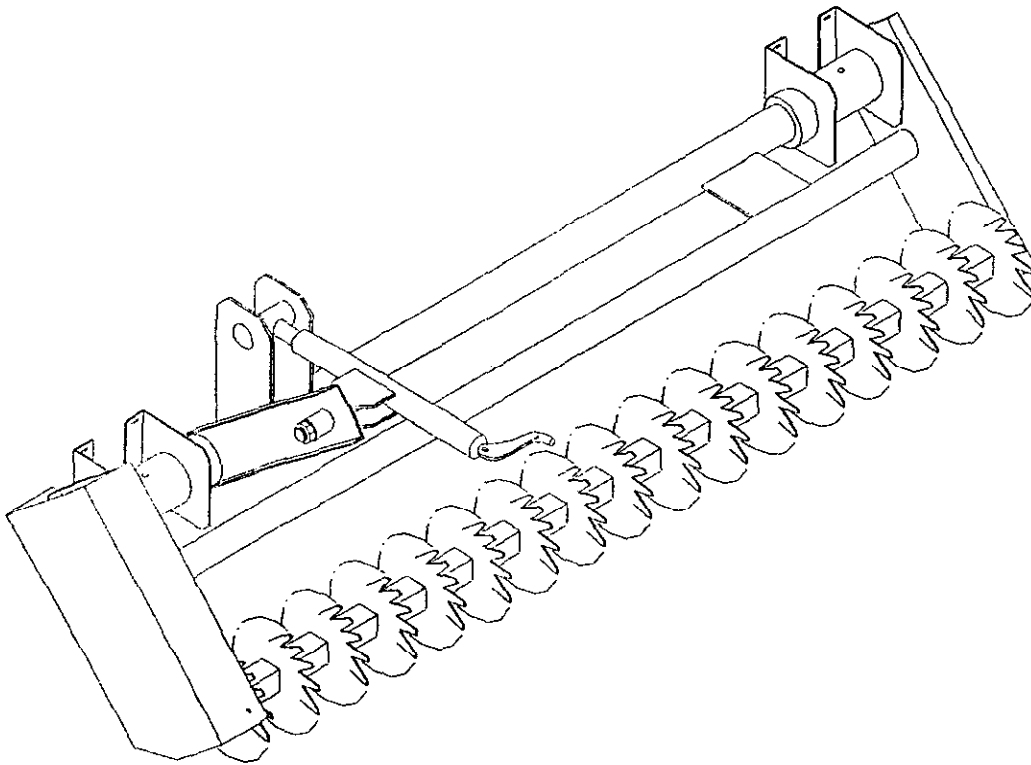




MODEL NO. 44015 - 20101 & UP

OPERATOR'S
MANUAL

THATCHING REEL 87
ATTACHMENT FOR TURF SWEEPER 6500



FOREWORD

Thank you for buying a high quality Toro turf care product. To get the best performance from this machine, operate and maintain it according to the instructions in this manual.

Toro also wants to stress the importance of safety. You and anyone else using or maintaining this machine are strongly urged to read this manual, especially all the safety instructions.

DANGER, WARNING and CAUTION, used with the triangular safety alert symbol, highlight safety messages. Always read and understand these messages because they relate to personal injury and your safety.

If you ever need help or have questions about your new Toro turf care product, contact your local Authorized Toro Distributor. The Toro Distributor has a complete supply of replacement parts, a full line of accessories and a professional service staff to support you. Keep your Toro all Toro. Buy genuine Toro parts and accessories.

TABLE OF CONTENTS

	Page		Page
SAFETY INSTRUCTIONS	3	LUBRICATION	11
SAFETY AND INSTRUCTION DECALS	4	STORAGE	11
SPECIFICATIONS	5	PARTS ORDERING	11
SET UP INSTRUCTIONS	6-10	THE TORO PROMISE	Back Cover
OPERATING INSTRUCTIONS	10		

SAFETY INSTRUCTION



The safety alert symbol means **CAUTION, WARNING or DANGER** - "personal safety instruction". Read and understand the instruction because it has to do with safety. Failure to comply with the instruction may result in personal injury.

BEFORE OPERATING

1. Read and understand the contents of this manual before starting and operating the machine. Become familiar with all controls and know how to stop quickly. A free replacement manual is available by sending complete Model and Serial Number to:

THE TORO COMPANY
8111 LYNDALE AVE. SO.
MINNEAPOLIS, MN 55420-1196

2. **ALWAYS** follow all safety precautions in the sweepers operator manual pertaining to operation of the sweeper.

3. Do not allow children to operate the machine. Do not allow adults to operate the machine without proper instruction.

4. **Never** operate the machine while under the influence of drugs or alcohol.

5. Keep all shields and safety devices in place. If a shield, safety device or decal becomes damaged, malfunctioning or illegible, repair or replace it before operation is commenced. Also tighten loose nuts, bolts to ensure machine is in safe operating condition.

6. Before each use, be sure all bolts and nuts are tight. Check the general condition of the blades.

7. Do not alter this equipment in any manner which may cause hazardous conditions.

WHILE OPERATING

8. Do not carry passengers on the sweeper and keep everyone away from the areas of operation.

MAINTENANCE

9. If major repairs are ever needed or assistance desired, contact an Authorized TORO Distributor.

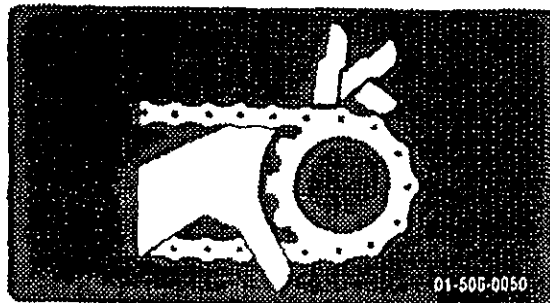
10. Make sure machine is in safe operating condition by keeping nuts, bolts and screws tight.

SAFETY AND INSTRUCTION DECALS

The following safety and instruction decals are installed on the unit. Replace any decals that becomes damaged or illegible. Part numbers for decals are listed below and in your Parts Catalog. Order replacements from your Authorized Toro Distributor.

⚠ DANGER

ROTATING CHAINS AND SPROCKETS CAN
CAUSE SERIOUS PERSONAL INJURY
DO NOT OPERATE MACHINE UNLESS ALL
GUARDS ARE IN PLACE



ON CHAIN GUARD
(Part No. 01-506-0050)

⚠ DANGER

ROTATING BLADES, DISCS OR TINES
CAN CAUSE SERIOUS INJURY

- KEEP HANDS AND FEET OUT OF BLADES,
DISCS OR TINES WHILE ENGINE
IS RUNNING.
- KEEP BYSTANDERS OUT OF AREA OF
OPERATION.
- STOP ENGINE BEFORE SERVICING
MACHINE.

01-506-0340

EACH SIDE BLADE GUARD
(Part No. 01-506-0340)

SPECIFICATIONS

THATCHING WIDTH: 60"

MOUNTING REQUIREMENTS:
Model 65 Sweeper

OPERATION: PTO powered, chain driven.

ROTATION DIRECTION: Forward

RAISE/LOWER MECHANISM: Screw jack

BLADES: (19) 12 pt., 12 ga. on 3" centers.

DRIVE CHAINS: #80 chain

BEARINGS: All self-aligning, re-lube type.

DIMENSIONS: Height - 20"
Width - 69"
Length - 24"

SHIPPING WEIGHT: 310 lbs.

SET UP INSTRUCTIONS

NOTE: This unit is heavy and the blades are capable of causing serious injury. It is recommended that two men mount this unit and that caution be exercised during this mounting procedure.

1. Take note of the parts already assembled on your thatcher and familiarize yourself with the hardware and parts needed to complete the assembly of the thatcher.

2. (FIG. 1) With two or more men, lift the Blade Support to the Reel Housing assembly. As you line up the holes of the reel housing assembly with the support brackets, insert a screwdriver or other rod in the hole in order to hold it while bolts are inserted from the inside of the reel housing assembly. Before tightening down the bolts, push the two mounting brackets of the blade support toward the ends and at the same time center the thatcher on the reel housing assembly. Tighten down the (8) bolts. There should be little back and forth play in the blade support when it is positioned properly.

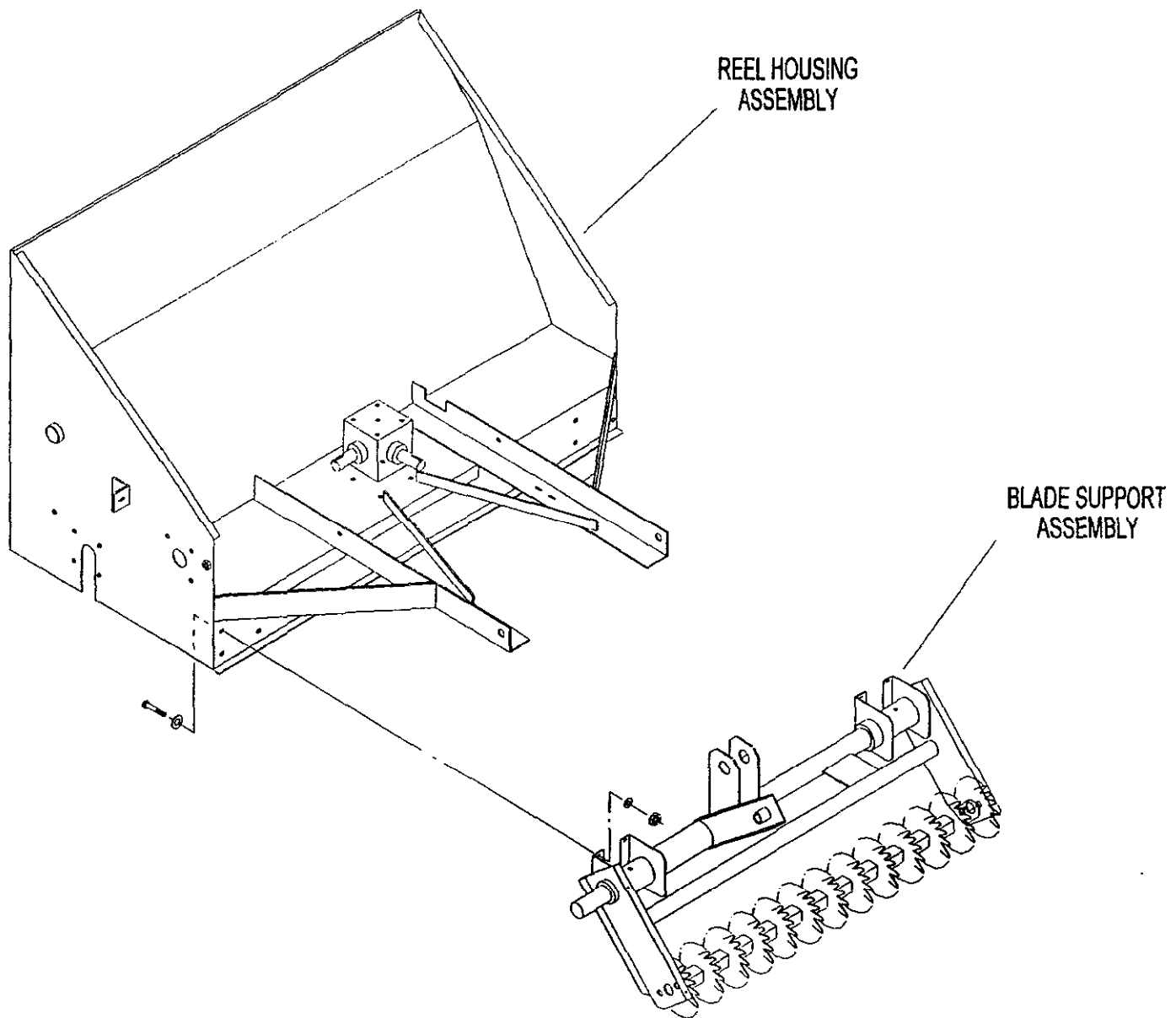


Figure 1

SET UP INSTRUCTIONS (Cont.)

3. (FIG. 2) Install the Screw Jack assembly as shown in the illustration. A hole for the castle nut must be drilled for a cotter pin to secure its position.

4. (FIG. 3) Remove the gearbox guard and the existing PTO from the tractor. Attach the drive shaft, the U-joint and the bearing. The spade lug, is an adjustment for the bearing and will be adjusted later.

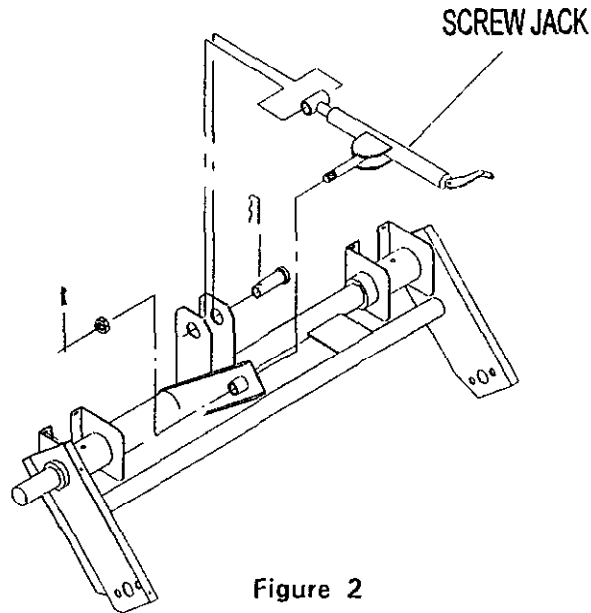


Figure 2

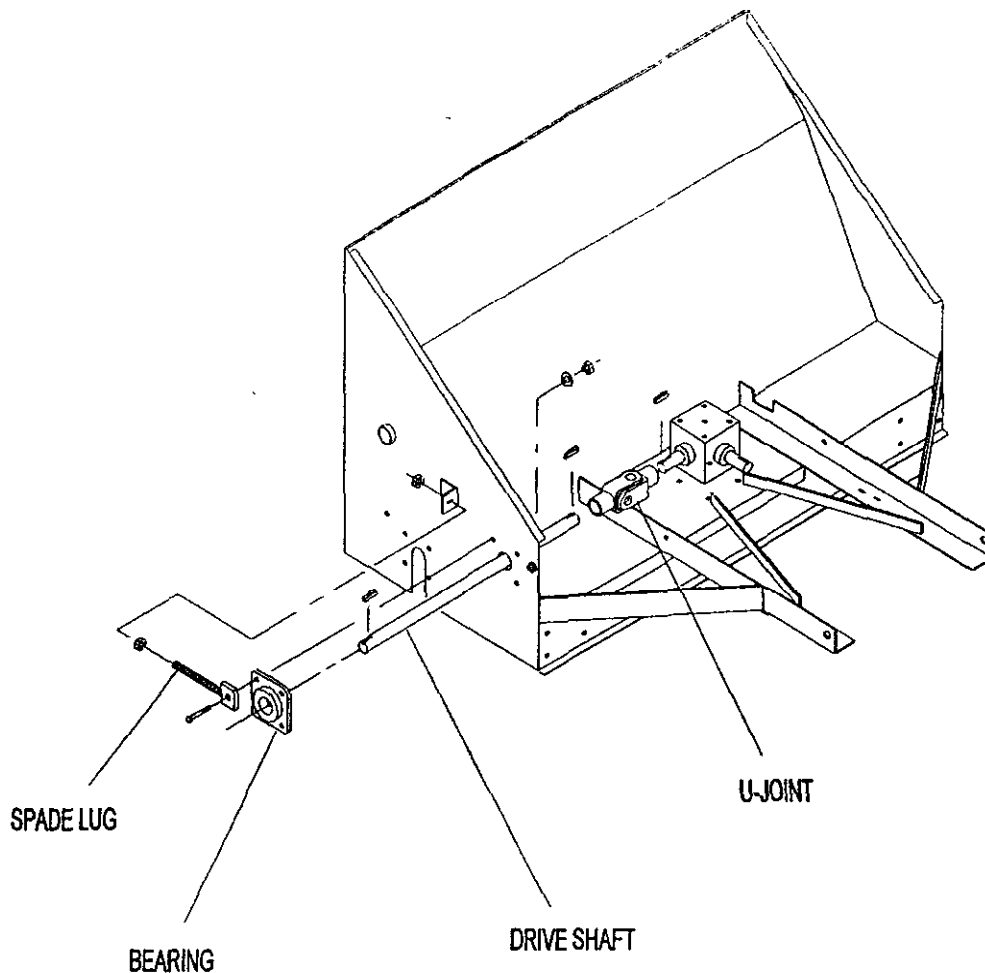


Figure 3

SET UP INSTRUCTIONS (Cont.)

5. (FIG. 4) Assemble the gear train of the thacher. Note the relative positions of the gears and chains. Item A (sprocket) has a grease zerk which must go to the outside. After the gears are placed on the shafts with the keys, a 3/16" hole must be drilled in the shafts to accommodate cotter pins (item B). Space machinery bushings out to the hole to keep the sprocket from moving outward.

6. (FIG. 3) CHAIN TENSION ADJUSTMENT: The chains are tightened/loosened by the use of (1) spade lug.

NOTE: DO NOT over tighten chain as this will cause excess wear on the gears.

DO NOT under tighten as this will cause excess wear on the chain.

When the chains are tightened properly, there should be a deflection between 1/8" to 1/4".

7. Lubricate the gears and chain as outlined in this manual.

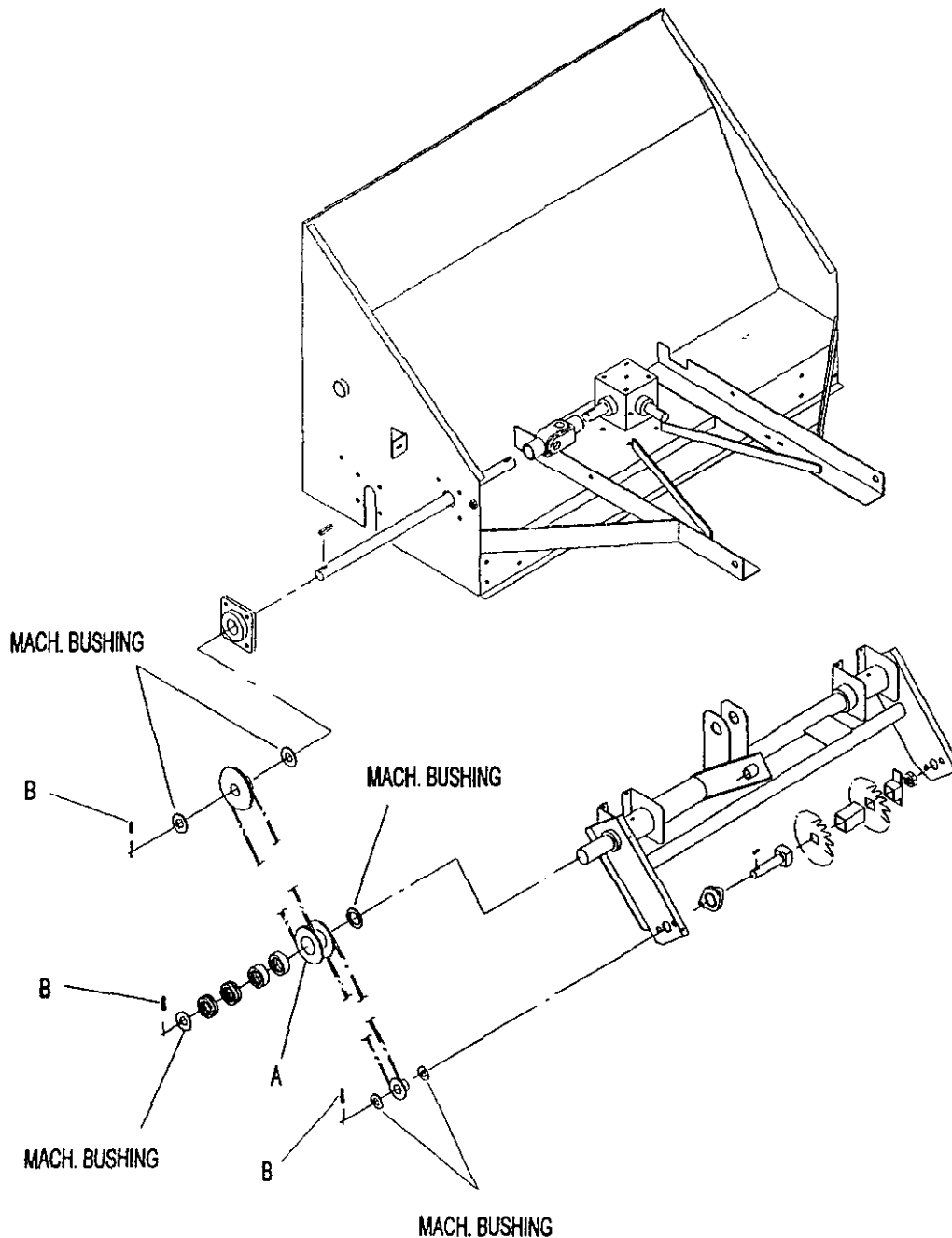


Figure 4

SET UP INSTRUCTIONS (Cont.)

8. (FIG. 5) Attach the PTO extension shaft (item A) and U-joint (item B), along with the mounting angle (item C), bearing (item D) and the blade guard (item E) to the gearbox as shown in the illustrated parts. Hook up the tractor PTO to the PTO extension.

NOTE: Be sure that when raising the thatcher, the blades do not come in contact with the blade guard (item E).

Adjust the jack so the blades will stop short of the guard.

9. Test the operation of the unit in the raised position.

NOTE: Stop the operation of the thatcher if any load or unusual noises occur. Remedy the cause before resuming operation. If the problem can't be fixed, contact your nearest Authorized TORO Distributor for service.

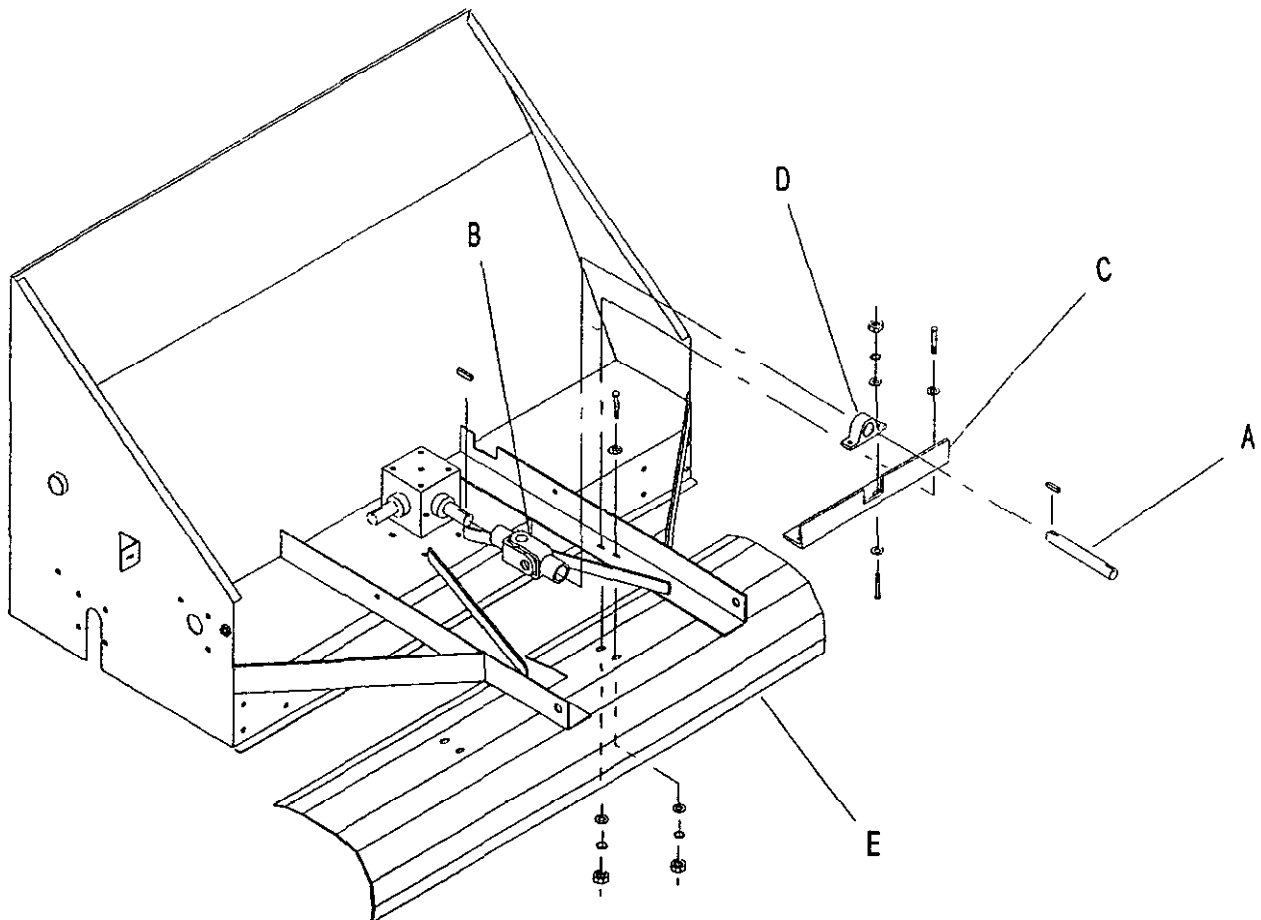


Figure 5

SET UP INSTRUCTIONS (Cont.)

10. (FIG. 6) Install the thatcher guards according to the illustration, using the hardware shown.

Reinstall the gearbox guard. The unit should now be ready to field test.

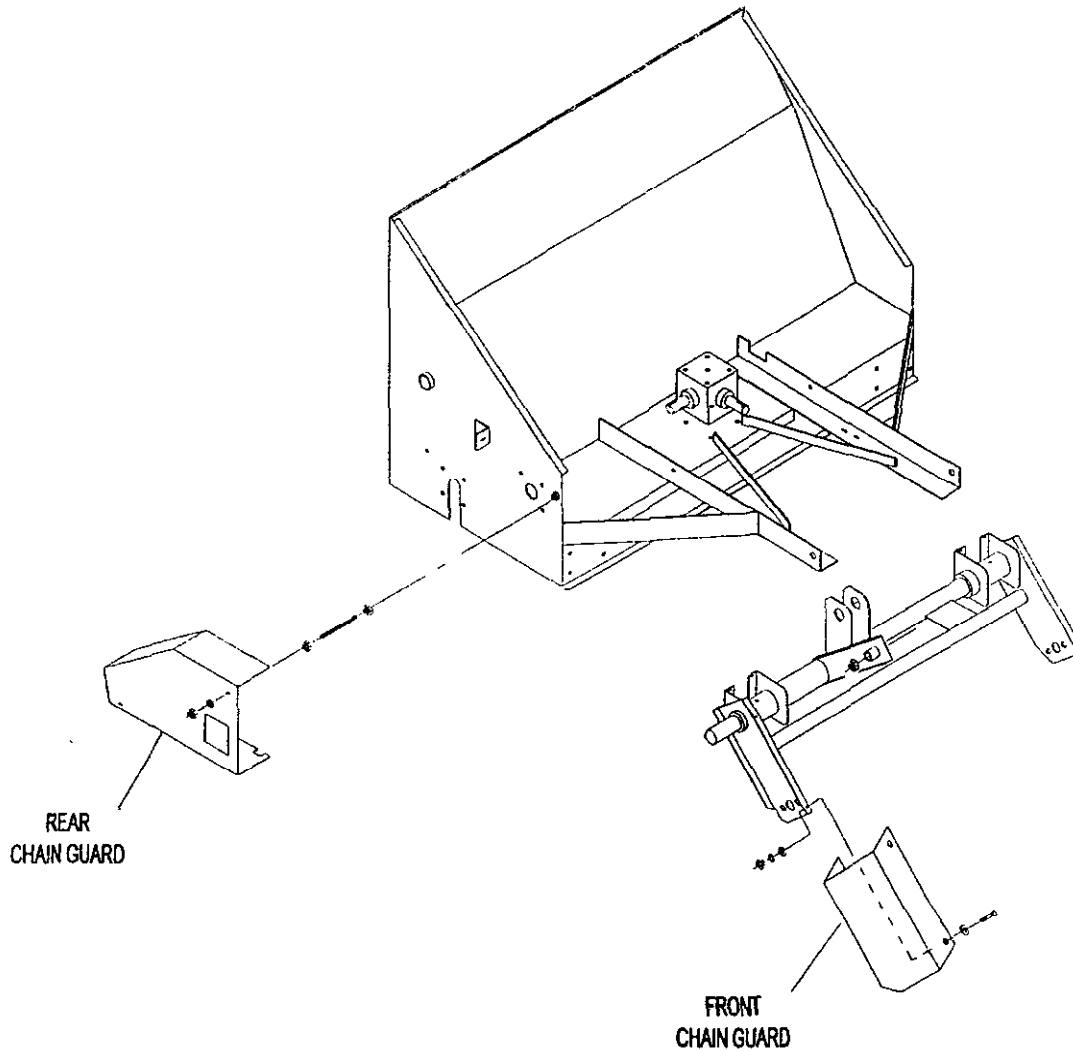


Figure 6

OPERATING INSTRUCTIONS

1. This unit is capable of thatching dead grass, debris, etc., or if lowered into the ground, aerating several inches deep.

2. In some soils and depending on the power source of the tractor, it may be possible to penetrate the soil as deep as 4 inches.

3. Choose a test patch of ground to experiment for the right depth to achieve satisfactory results.

LUBRICATION

BEARINGS

The thatcher has self sealing bearings that must be lubricated with a No. 2 Lithium based grease.

DRIVE CHAIN

1. Always maintain a heavy coat of grease on the drive chain.

IMPORTANT: Lubricate the bearings to maintain a slight leakage on the seals. Too much grease can cause overheating.

STORAGE

1. Thoroughly clean the thatcher. The blade area should be free of dirt, leaves and debris.

2. Check the condition of the blades. Replace any worn or broken blades.

3. Check all fasteners for looseness: tighten as necessary.

4. Grease or oil all grease fittings and bearings. Wipe off excess lubricant.

5. Check the tension and condition of the drive chain. Adjust the tension if necessary and lightly coat the chain with grease.

PARTS ORDERING

To order replacement parts from an authorized TORO Distributor, supply the following information.

1. Model and serial numbers of the machine.

2. Part number, description and quantity of parts desired.

Note: Do not order by reference number if a parts catalog is being used; use the part number.

The Toro Promise

A ONE YEAR LIMITED WARRANTY

The Toro Company promises to repair your TORO Product if defective in materials or workmanship. The following time periods from the date of purchase apply:

Commercial Products 1 Year

The costs of parts and labor are included, but the customer pays the transportation costs on walk rotary mowers with cutting widths of less than 25".

If you feel your TORO product is defective and wish to rely on The Toro Promise, the following procedure is recommended:

1. Contact your Authorized TORO Distributor or Commercial Dealer (the Yellow Pages of your telephone directory is a good reference source).
2. The TORO Distributor or Commercial Dealer will advise you on the arrangements that can be made to inspect and repair your product.
3. The TORO Distributor or Commercial Dealer will inspect the product and advise you whether the product is defective and, if so, make all repairs necessary to correct the defect without an extra charge to you.

If for any reason you are dissatisfied with the distributor's analysis of the defect or the service performed, you may contact us.

Write:

**TORO Commercial Products Service Department
8111 Lyndale Avenue South
Minneapolis, Minnesota 55420**

The above remedy of the product defects through repair by an Authorized TORO Distributor or Commercial Dealer is the purchaser's sole remedy for any defect.

THERE IS NO OTHER EXPRESS WARRANTY. ALL IMPLIED WARRANTIES OF MERCHANTABILITY AND FITNESS FOR USE ARE LIMITED TO THE DURATION OF THE EXPRESS WARRANTY.

Some states do not allow limitations on how long an implied warranty lasts, so the above limitation may not apply to you.

This Warranty applies only to parts or components which are defective and does not cover repairs necessary due to normal wear, misuse, accidents, or lack of proper maintenance. Regular, routine maintenance of the unit to keep it in proper condition is the responsibility of the owner.

All warranty repairs reimbursable under the Toro Promise must be performed by an Authorized TORO Commercial Dealer or Distributor using Toro approved replacement parts.

Repairs or attempted repairs by anyone other than an Authorized TORO Distributor or Commercial Dealer are not reimbursable under the Toro Promise. In addition, these unauthorized repair attempts may result in additional malfunctions, the correction of which is not covered by warranty.

THE TORO COMPANY IS NOT LIABLE FOR INDIRECT, INCIDENTAL OR CONSEQUENTIAL DAMAGES IN CONNECTION WITH THE USE OF THE PRODUCT INCLUDING ANY COST OR EXPENSE OF PROVIDING SUBSTITUTE EQUIPMENT OR SERVICE DURING PERIODS OF MALFUNCTION OR NON-USE.

Some states do not allow the exclusion or limitation of incidental or consequential damages, so the above limitation or exclusion may not apply to you.

This warranty gives you specific legal rights, and you may also have other rights which vary from state to state.

COUNTRIES OTHER THAN THE UNITED STATES OR CANADA

Customers who have purchased TORO products exported from the United States or Canada should contact their TORO Distributor (Dealer) to obtain guarantee policies for your country, province or state. If for any reason you are

dissatisfied with your Distributor's service or have difficulty obtaining guarantee information, contact the TORO importer. If all other remedies fail, you may contact us at The Toro Company.