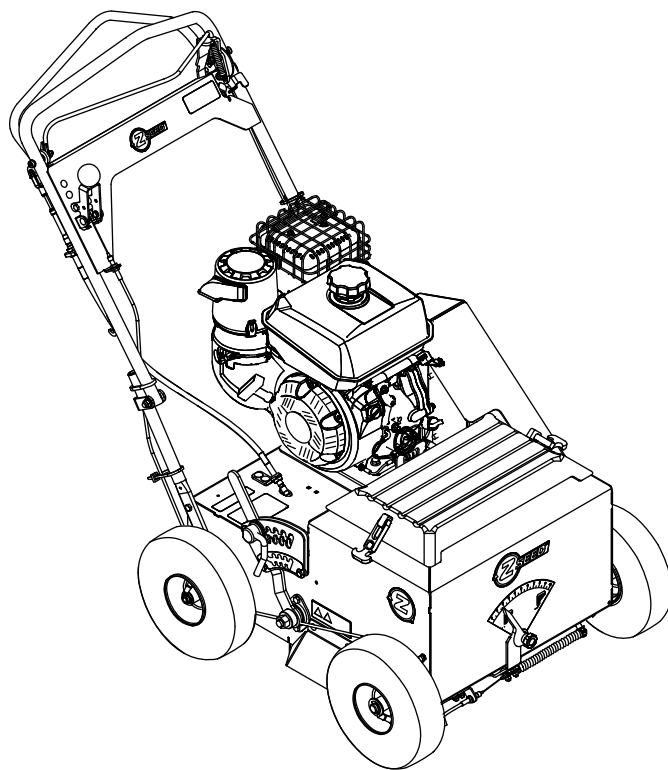




Z-SEED™

Model No. ZD3020—Serial No. 411294212 and Up

Picture below may not reflect actual product.



Parts Manual

Ordering Replacement Parts

To order replacement parts, please supply the part number, the quantity, and the description of each part desired.

Understanding Reference Numbers

Each identified part in an illustration has a reference number. The reference number for a part also appears in the parts list, along with other information about the part.

This catalog uses two special reference number formats, one to indicate parts in a service assembly and another to indicate the quantity of a given part in an illustration.

Service Assembly Reference Numbers

Parts in service assemblies have reference numbers in the form a:b. The a represents the reference number of the entire service assembly and the b represents a sequential number unique to each part within the service assembly.

For example, a wheel assembly might be identified by reference number 6, the tire by 6:1, the valve by 6:2, and the wheel by 6:3. When you order the assembly identified by reference number 6, you receive all parts identified by reference numbers 6:1, 6:2, and 6:3. However, you may also order any part individually. Reference numbers of this type appear in illustration and in parts lists.

Reference Numbers Indicating Quantity

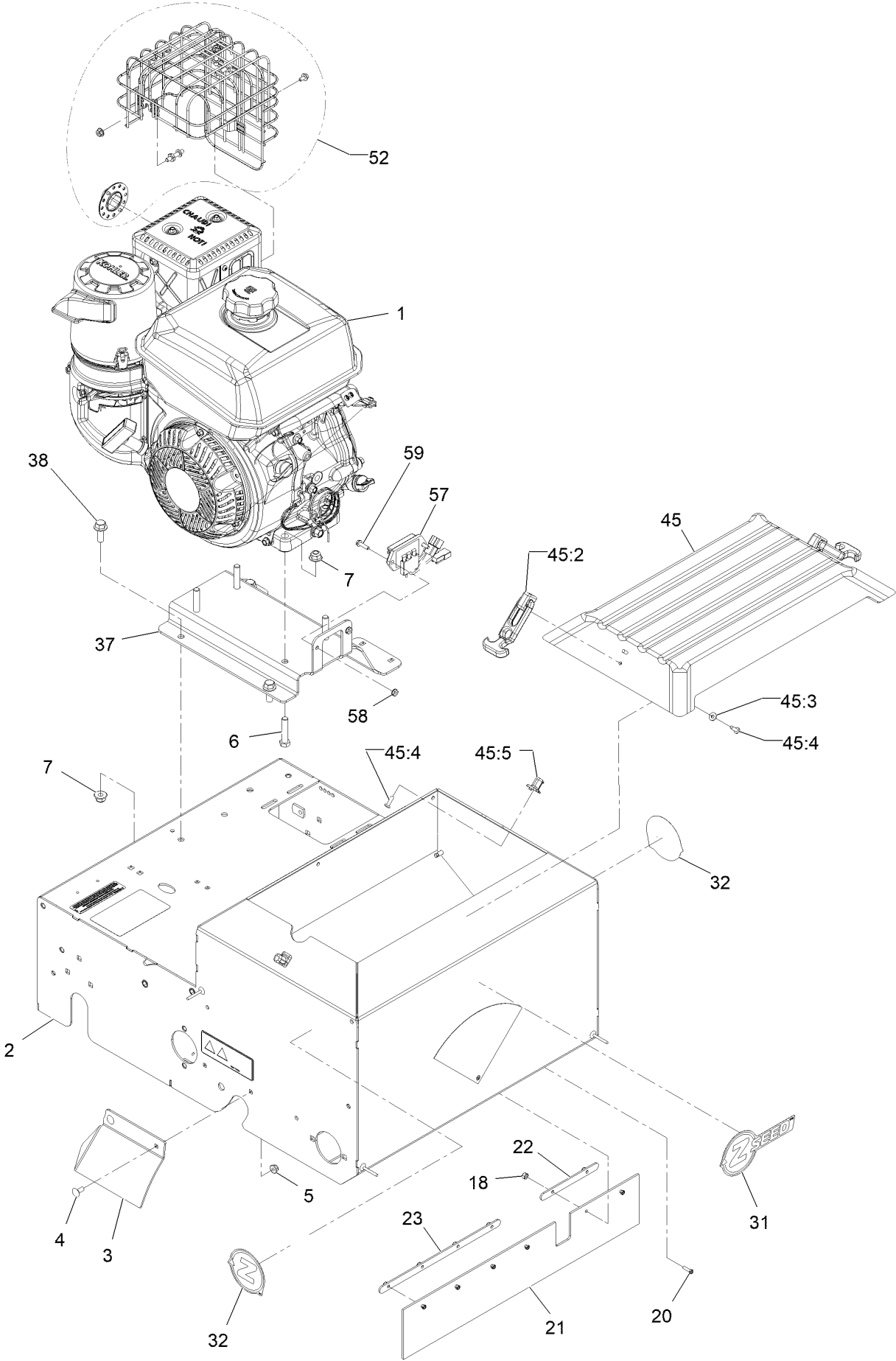
In an illustration, if a reference number indicates more than one part, the reference number has the form nX y. The n represents the quantity of the part, the X is the multiplication symbol, and the y represents the reference number.

For example, in an illustration, the reference number 2X 37 means that two of the parts identified by reference number 37 are indicated.

Contents

Main Frame Assembly	4
Main Frame Assembly W/Decals	6
Handle Assembly	8
Cutting Wheel Assembly	10
Shaft Assembly	12
Seed Gate Assembly	14
Seed Gate Kit No. 126-0815	16
Belt Drive Assembly	18
Transmission Assembly	20

Main Frame Assembly



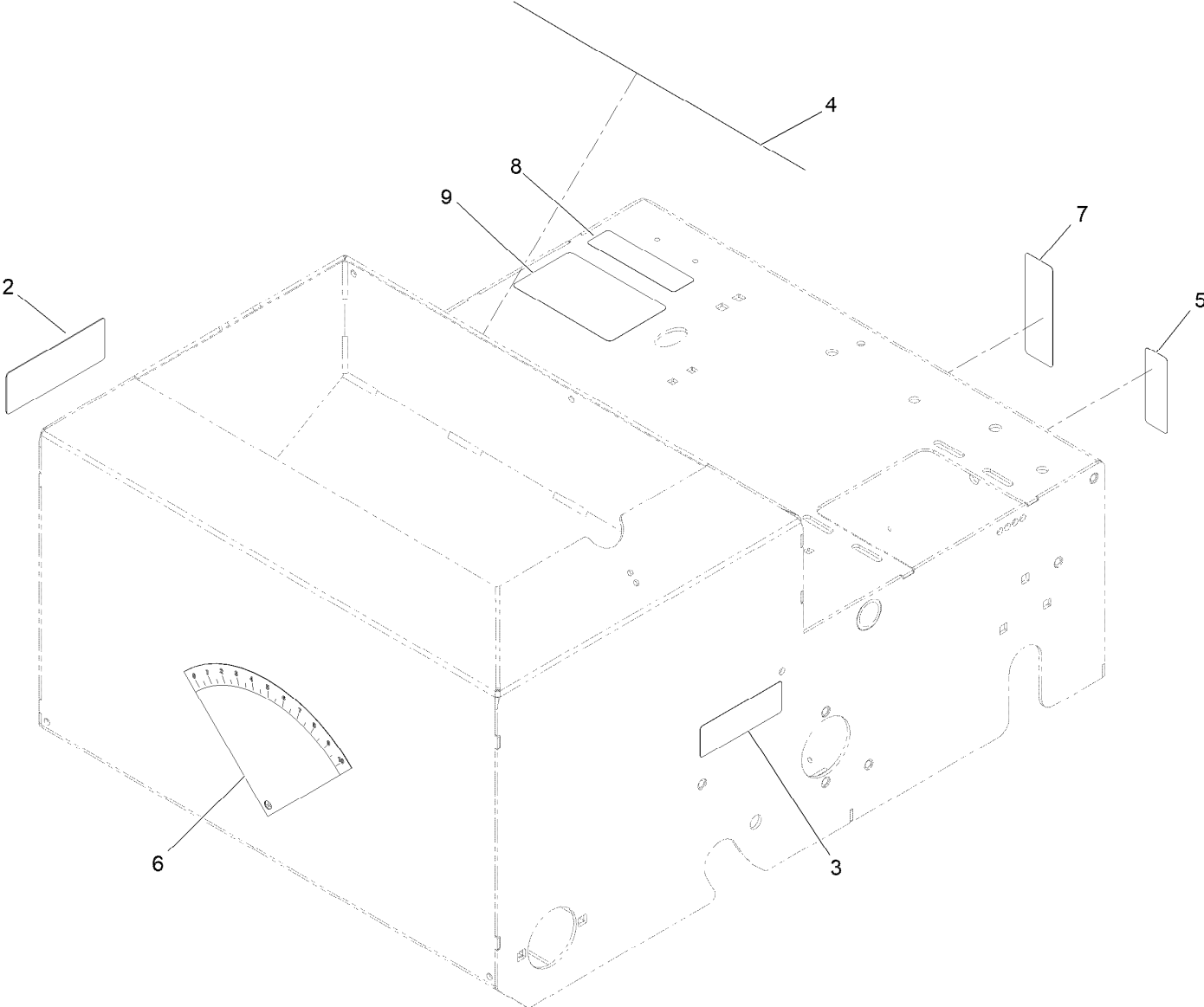
Main Frame Assembly (continued)

<i>Ref.</i>	<i>Part Number</i>	<i>Qty.</i>	<i>Description</i>	<i>Ref.</i>	<i>Part Number</i>	<i>Qty.</i>	<i>Description</i>
1		1	Engine-Kohler, Ch395 ●■	32	142-3051	2	Decal-Z-Logo
2	142-4829	1	Frame-Service ASM	37	135-0690-03	1	Plate-Engine
3	121-1896-03	1	Guard-RH	38	3234-42	3	Screw HHF 3/8-16 X 1
4	3229-11	2	Bolt-Carriage 1/4-20 X 5/8	45	126-1665	1	Seeder Cover Kit
5	104-7201	2	Nut-Nyloc 1/4-20 Flg	45:2	103-4080	2	Latch-Rubber
6	323-9	4	Screw-HH 3/8-16 X 1 3/4	45:3	3256-14	4	Washer-#10 Std
7	104-8301	7	Nut-Nyloc 3/8-16 Flg	45:4	3290-500	6	Screw-PPH #10-24 X 5/8
18	3296-1	6	Nut-Nyloc #8-32	45:5	103-4081	2	Latch-Keeper
20	3290-392	6	Screw-SHH #8-32 X 5/8	52	135-7340	1	Kit-Ch395 Muffler Guard
21	121-1990	1	Guard-Dust	57	135-3924	1	Regulator
22	121-1991	1	Plate-Retainer	58	32149-7	2	Nut-Keps
23	121-1992	1	Plate-Retainer	59	32105-13	2	Screw-HWH #10-24 X 3/4
31	142-5427	1	Decal-Z-Seed Logo				

● Not serviced separately

■ Obtain parts from www.kohlerplus.com

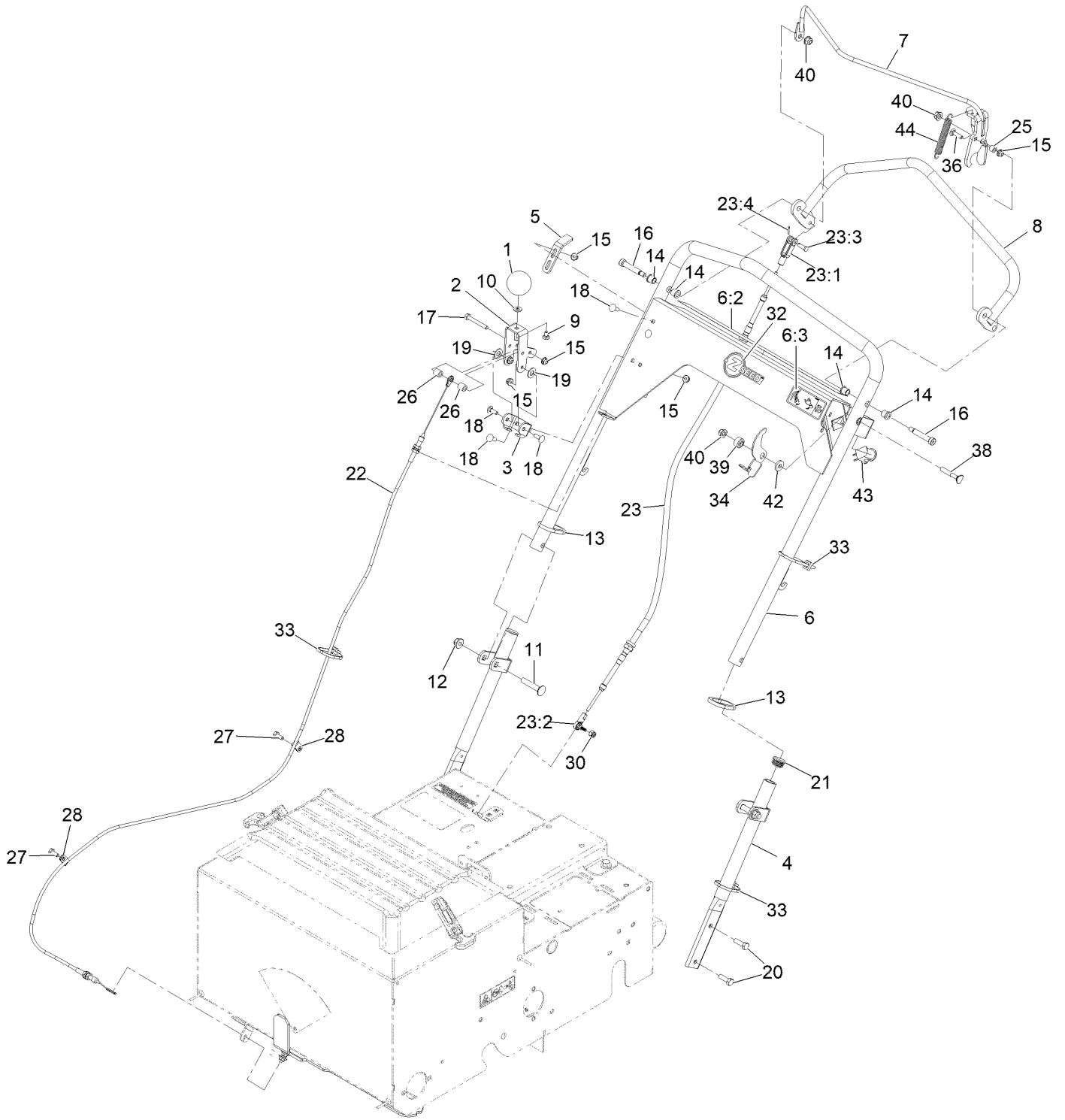
Main Frame Assembly W/Decals



Main Frame Assembly W/Decals (continued)

<i>Ref.</i>	<i>Part Number</i>	<i>Qty.</i>	<i>Description</i>	<i>Ref.</i>	<i>Part Number</i>	<i>Qty.</i>	<i>Description</i>
2	93-7321	1	Decal-Danger	6	116-8535	1	Decal-Flow, Seed
3	117-4979	1	Decal-Warning, Shields	7	121-6203	1	Decal-Bypass
4	121-2011	1	Decal-Warning	8	133-8062	1	Decal-Arrestor, Spark
5	115-9625	1	Decal-Brake, Parking	9	126-0296	1	Decal-Aid, Service

Handle Assembly

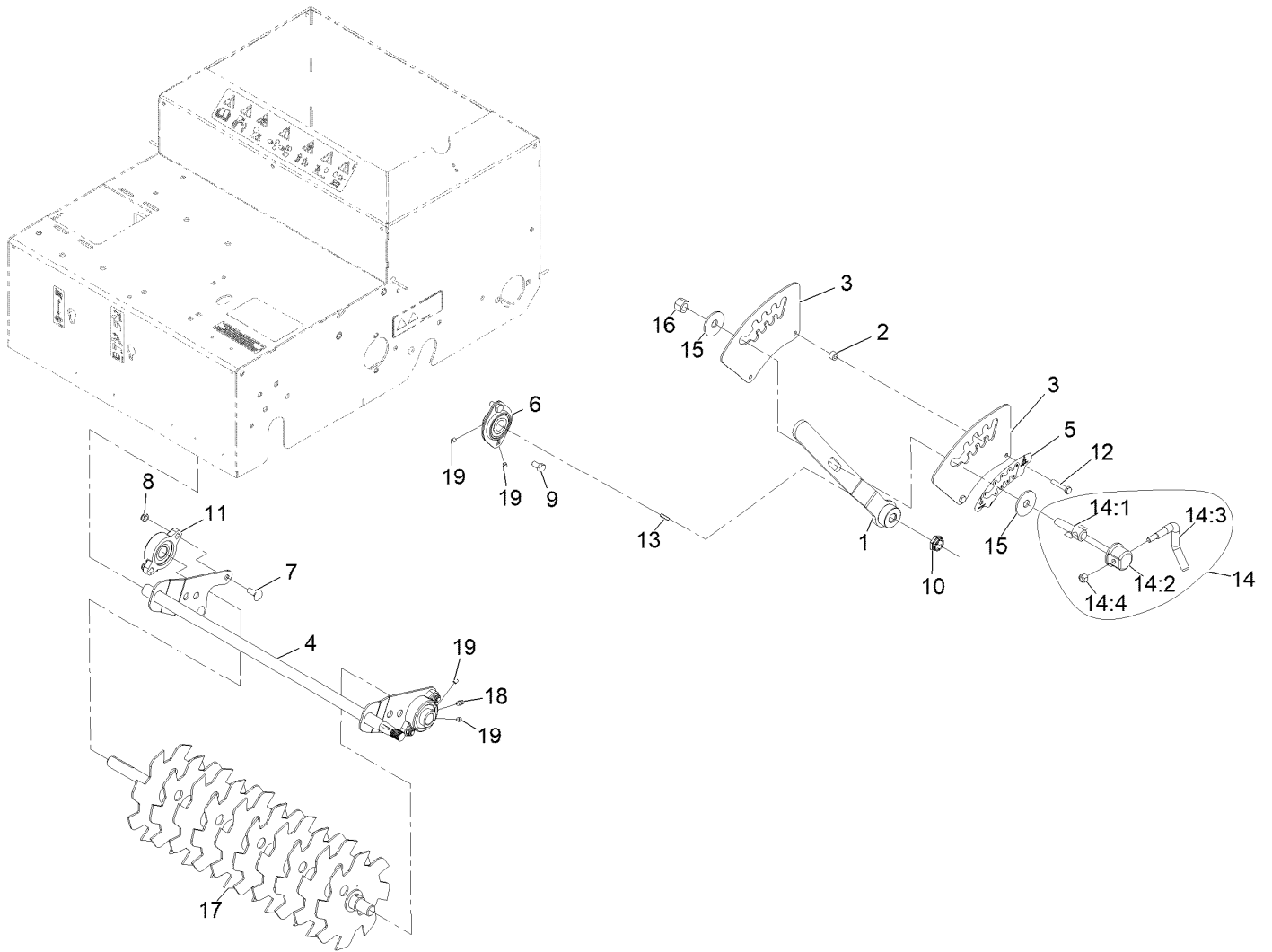


Handle Assembly (continued)

<i>Ref.</i>	<i>Part Number</i>	<i>Qty.</i>	<i>Description</i>	<i>Ref.</i>	<i>Part Number</i>	<i>Qty.</i>	<i>Description</i>
1	121-1877	1	Knob-Rate, Flow	21	121-4870	2	Plug
2	121-1878	1	Lever-Adjust, Flow	22	126-0042	1	Cable-Flow, Seed
3	121-1879	1	Bracket-Adjust, Flow	23	116-8252	1	Cable-Push Pull
4	121-1893-03	2	Handle-Lower	23:1	121-2000	1	Clevis
5	121-1928	1	Bracket-Adjust, Drive	23:2	117-9720	1	Ball Joint
6	116-9735	1	Handle	23:3	283-67	1	Pin-Clevis
6:2	116-8648	1	Decal-Control Panel, Seeder	23:4	3272-5	1	Pin-Cotter 3/32 X 1/2
6:3	116-8536	1	Decal-Safety Latch	25	66-8010	1	Spacer
7	126-0509-01	1	Bail-Clutch [red]	26	22-7810	2	Spacer
8	121-1948-01	1	Drive Handle Wa	27	321-3	2	Screw-HH 1/4-20 X 5/8
9	3229-10	1	Bolt-Carriage 1/4-20 X 1/2 ●	28	2412-149	2	Clamp-R
10	3256-22	1	Washer-1/4 SAE	30	3296-3	1	Nut-Nyloc 1/4-28
11	3231-6	2	Bolt-Carriage 3/8-16 X 2	32	142-5428	1	Decal-Z-Seed Logo
12	104-8301	2	Nut-Nyloc 3/8-16 Flg	33	3290-378	3	Tie-Cable
13	121-6202	2	Ring-Handle Lock	34	126-0205	1	Latch-Bail
14	103-9928	4	Bearing	36	3229-2	1	Bolt-Carriage 1/4-20 X 1
15	104-7201	8	Nut-Nyloc 1/4-20 Flg	38	112-8876	1	Bolt-Carriage 5/16-18 X 2
16	126-0277	2	Screw-Shoulder	39	116-2690	1	Bushing-Stepped
17	321-11	1	Screw-HH 1/4-20 X 2	40	104-8300	3	Nut-Nyloc 5/16-18 Flg
18	3229-1	6	Bolt-Carriage 1/4-20 X 3/4	42	88-7200	1	Washer-Flat
19	48-9220	2	Washer-Plain	43	82-2190	1	Switch
20	322-5	4	Screw-HH 5/16-18 X 1	44	95-3805	1	Spring

● Use Pro-Lock, Nut Type (P/N 1-840022, .5ml tube) on threads.

Cutting Wheel Assembly

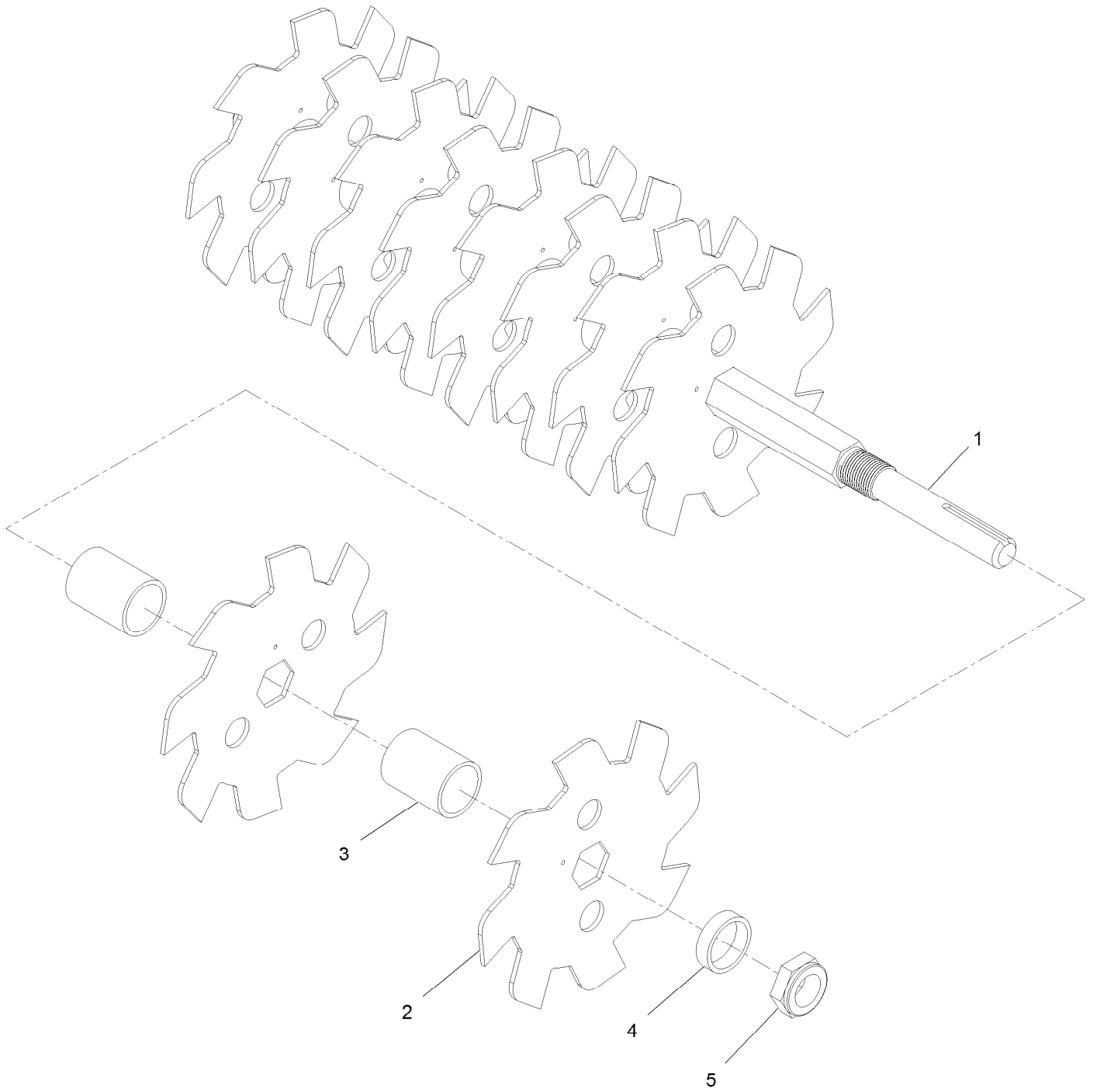


Cutting Wheel Assembly (continued)

<i>Ref.</i>	<i>Part Number</i>	<i>Qty.</i>	<i>Description</i>	<i>Ref.</i>	<i>Part Number</i>	<i>Qty.</i>	<i>Description</i>
1	116-9932-03	1	Handle-Height	13	3257-5	1	Key-Woodruff #9 3/4 X 3/16
2	98-4799	2	Spacer	14	107-1664	1	Lever ASM
3	116-9928	2	Plate-Height	14:1	106-3239	1	Screw-Lock
4	126-0010-03	1	Pivot-Height	14:2	107-1644	1	Cap-Lock
5	126-2446	1	Decal-Cut Depth, Slicer/Seeder	14:3	106-3241	1	Lever-Lock
6	121-1961	2	Bearing	14:4	3296-29	1	Nut-Nyloc 5/16-18
7	3230-16	4	Bolt-Carriage 5/16-18 X 7/8	15	86-1990	2	Washer
8	3296-47	4	Nut-Nyloc 5/16-18 Thin	16	3296-23	1	Nut-Nyloc 1/2-13
9	322-2	4	Screw-HH 5/16-18 X 5/8	17	126-0034	1	Slicer Shaft ASM
10	121-3611	1	Nut-Hex, Flextop	18	302-19	2	Zerk-1/4-28 Str ●
11	116-9992	2	Bearing-Flange	19	3245-35	8	Screw-Set HSH 1/4-28 X 1/4 ●
12	142-4837	2	Screw-HH				

● Use Pro-Lock, Nut Type (P/N 1-840022, .5ml tube) on threads.

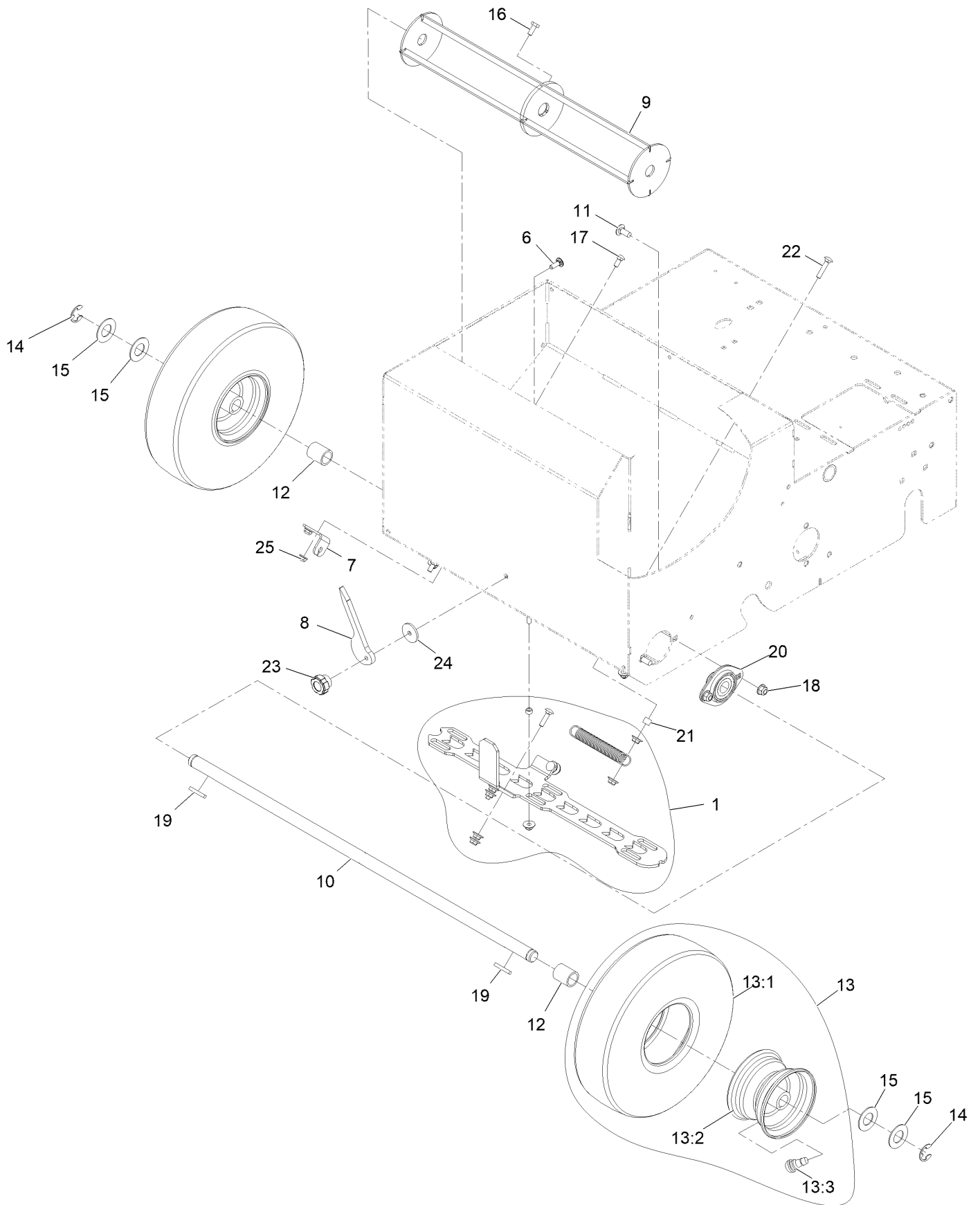
Shaft Assembly



Shaft Assembly (continued)

<i>Ref.</i>	<i>Part Number</i>	<i>Qty.</i>	<i>Description</i>	<i>Ref.</i>	<i>Part Number</i>	<i>Qty.</i>	<i>Description</i>
1	126-0009	1	Shaft-Slicer	4	126-0033	1	Spacer
2	135-3955	10	Blade-Cutting, Seeder	5	3296-60	1	Nut-Lock, NI
3	126-0041	9	Spacer-Blade				

Seed Gate Assembly

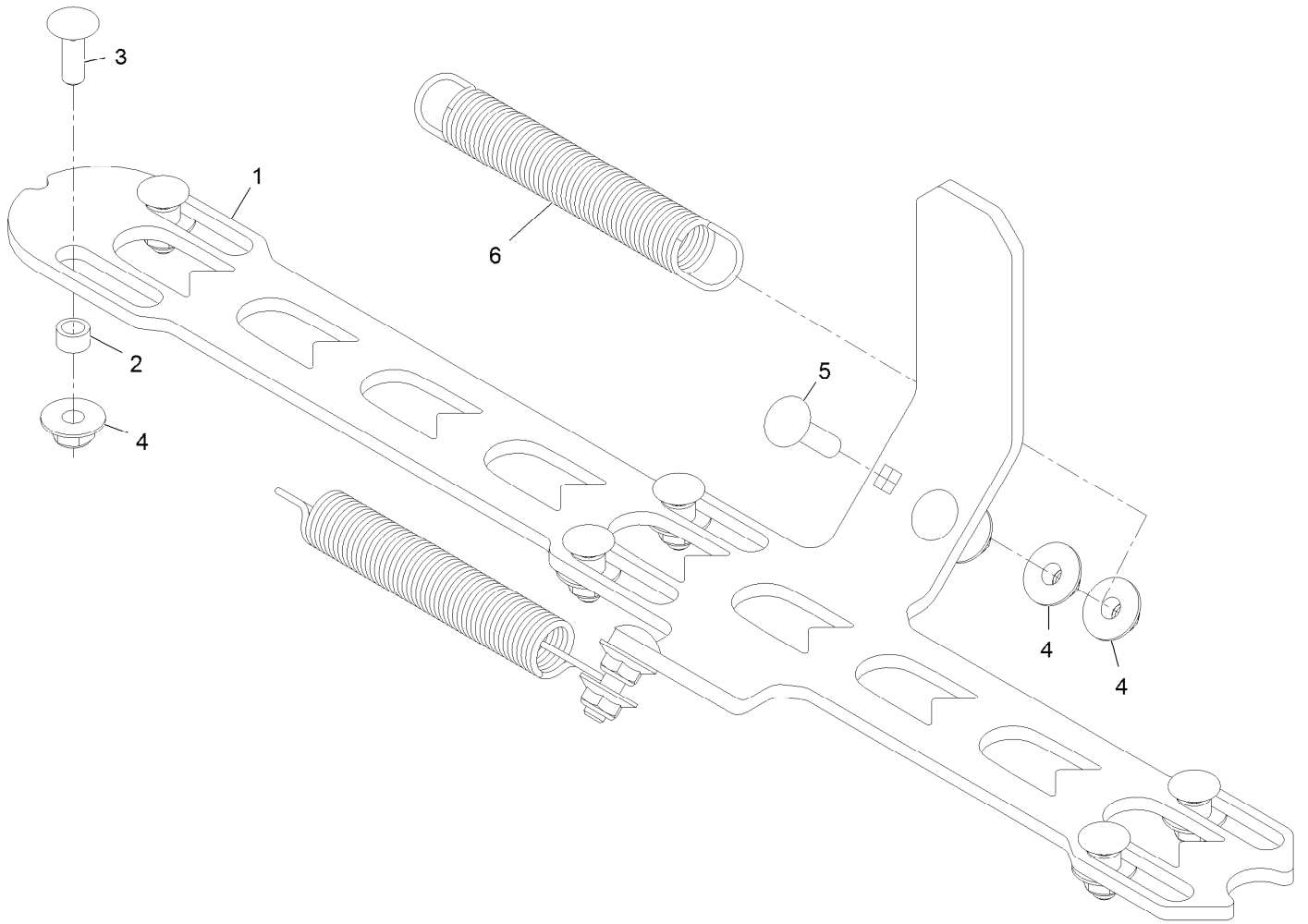


Seed Gate Assembly (continued)

<i>Ref.</i>	<i>Part Number</i>	<i>Qty.</i>	<i>Description</i>	<i>Ref.</i>	<i>Part Number</i>	<i>Qty.</i>	<i>Description</i>
1	126-0815	1	Seed Gate Kit	14	32151-48	2	E-Ring
6	1-807512	7	Bolt-CARR	15	3256-39	4	Washer-Flat
7	121-1907	1	Bracket-Flow, Seed	16	321-3	1	Screw-HH ●
8	121-1912	1	Gauge-Flow, Seed	17	3229-11	2	Screw-CARR
9	125-3782-03	1	Mixer	18	104-8300	4	Nut-HF, NI
10	121-1929	1	Axle-Front ■	19	92-0049	2	Key-Square
11	3230-23	4	Bolt-CARR	20	121-1961	2	Bearing
12	105-3838	2	Spacer	21	66-8010	2	Spacer
13	142-4835	2	Wheel ASM	22	3229-3	2	Screw-CARR
13:1	121-6081	1	Tire	23	233-67	1	Knob-Chute
13:2	142-4836	1	Wheel-Rim	24	103995	1	Washer
13:3	5108	1	Valve	25	104-7201	2	Nut-HF, NI

- Use Pro-Lock, Nut Type (P/N 1-840022, .5ml tube) on threads.
- Apply anti-seize compound to axle ends before installing tires.

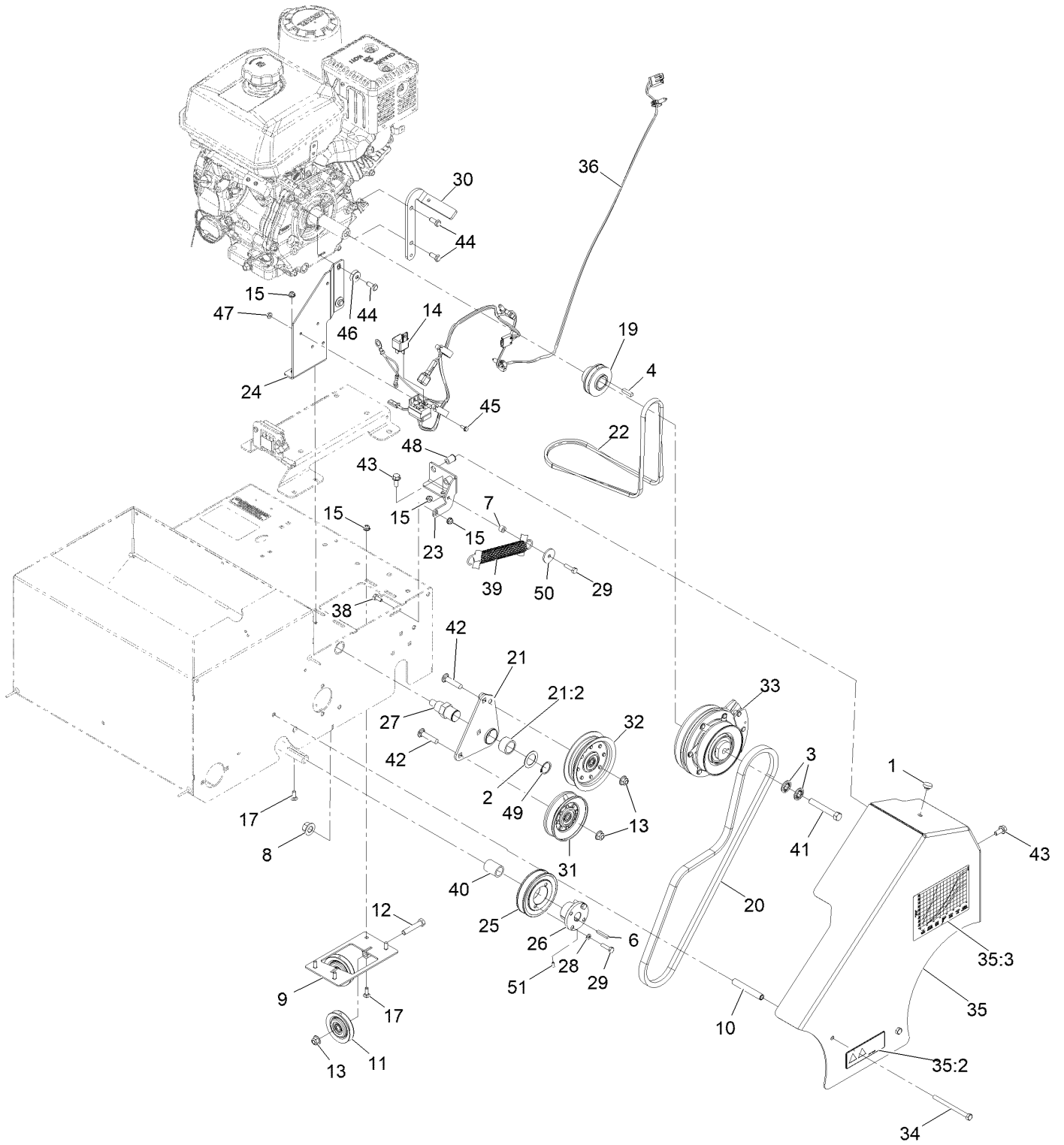
Seed Gate Kit No. 126-0815



Seed Gate Kit No. 126-0815 (continued)

<i>Ref.</i>	<i>Part Number</i>	<i>Qty.</i>	<i>Description</i>	<i>Ref.</i>	<i>Part Number</i>	<i>Qty.</i>	<i>Description</i>
1	126-0415	1	Gate-Seed	4	114-3778	12	Nut-HF
2	126-0416	6	Spacer	5	3229-2	3	Bolt-Carriage 1/4-20 X 1
3	1-807512	6	Bolt-Carriage 1/4-20 X 3/4 Short Neck	6	121-2016	2	Spring-Extension

Belt Drive Assembly

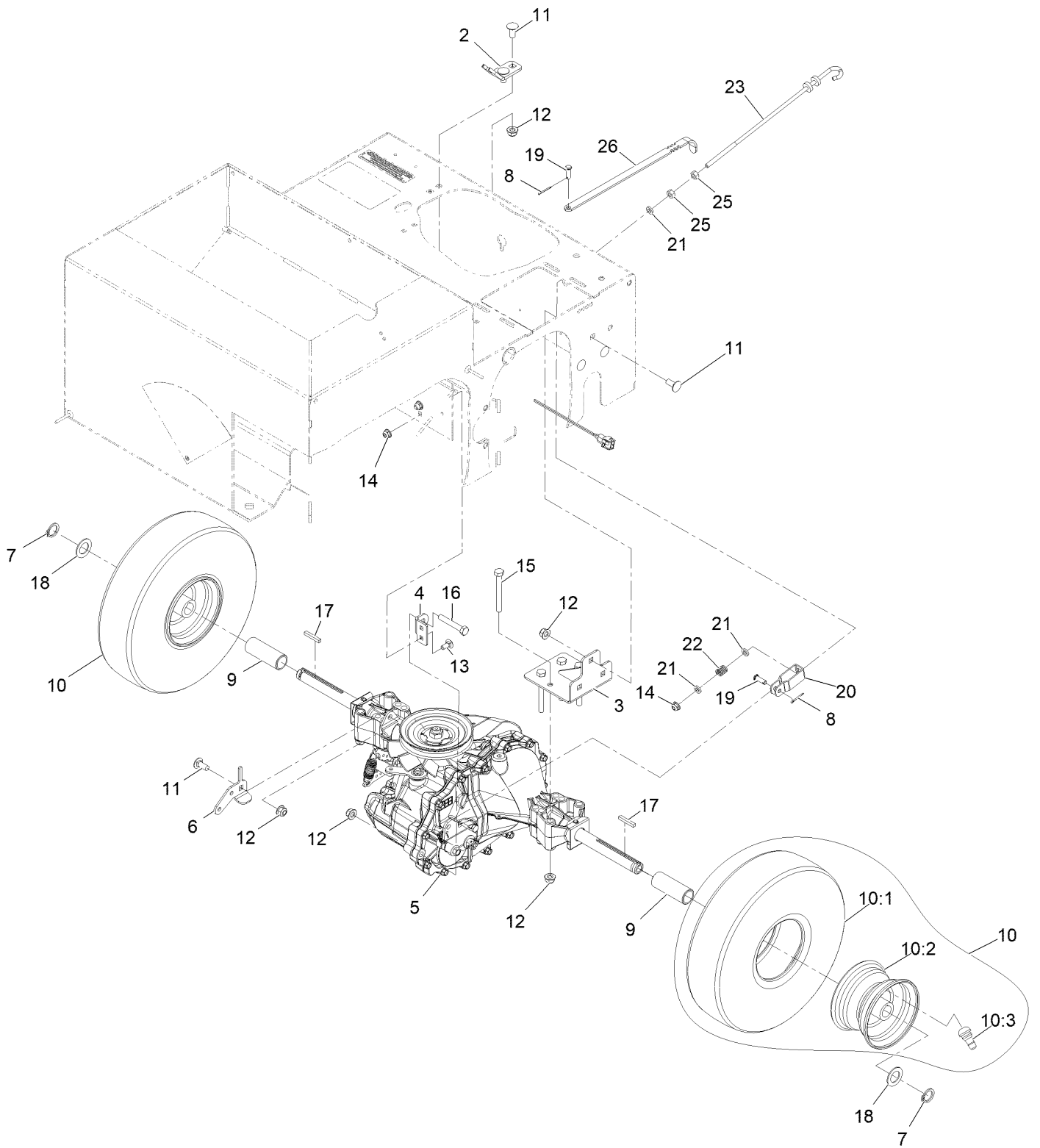


Belt Drive Assembly (continued)

<i>Ref.</i>	<i>Part Number</i>	<i>Qty.</i>	<i>Description</i>	<i>Ref.</i>	<i>Part Number</i>	<i>Qty.</i>	<i>Description</i>
1	1-513658	1	Bumper	28	3253-3	2	Washer-Lock 1/4
2	1-543436	1	Washer-Spacer	29	321-6	3	Screw-HH 1/4-20 X 1
3	1-603610	2	Washer-Spring Disc 7/16	30	135-2030	1	Stop-Clutch
4	1-807259	1	Key-Machine 1/4 X 1/4 X 1	31	116-9623	1	Pulley-Idler V
6	92-0049	1	Key-Machine 3/16 X 3/16 X 1 1/4	32	116-9728	1	Pulley-Idler Flat (4.06-Inch)
7	98-4799	1	Spacer	33	116-9852	1	Clutch-Electric
8	99-5107	1	Nut-Lock 1/2-13	34	322-19	2	Screw-HH 5/16-18 X 4
9	126-0418-03	1	ASM Tension-Pulley	35	142-4832	1	Guard-Belt, W/Decals
10	104-0502	2	Spacer-Kickstand, Long	35:2	93-7321	1	Decal-Danger
11	121-1965	2	Pulley-Idler	35:3	116-8537	1	Decal-Graph, Seed
12	323-10	2	Screw-HH 3/8-16 X 2	36	135-7761	1	Harness-Wire
13	104-8301	4	Nut-Nyloc 3/8-16 Flg	38	321-3	1	Screw-HH 1/4-20 X 5/8
14	105-4145	1	Relay	39	126-0091	1	Spring-Extension
15	104-7201	8	Nut-Nyloc 1/4-20 Flg	40	126-0108	1	Spacer
17	3229-1	6	Bolt-Carriage 1/4-20 X 3/4	41	3212-12	1	Screw-HH 7/16-20 X 3 ●
19	116-9471	1	Pulley-Mule Drive	42	3231-29	2	Bolt-Carriage 3/8-16 X 1 3/4
20	116-9518	1	Belt-Seeder, Clutch	43	3234-47	3	Screw-HH Flg 5/16-18 X 3/4
21	116-9519	1	Idler Arm ASM	44	3235-6	4	Screw-HH 5/16-24 X 3/4
21:2	116-9538	1	Bushing	45	3290-321	1	Screw-HWH
22	116-9532	1	Belt-Mule Drive	46	3290-456	2	Washer-Spring Disc
23	116-9533-03	1	Bracket-Spring	47	32128-17	1	Nut-Flange #10-24 Top Lock
24	135-2029-03	1	Guard-Belt	48	32148-7	2	Nut-Clinch
25	121-2019	1	Sheave-Taper Lock	49	32151-29	1	Ring-Retaining
26	121-2022	1	Bushing-Taper Lock	50	103995	1	Washer
27	116-9539	1	Pivot-Idler	51	126-0284	1	Screw-Set, Hs

● Use Pro-Lock, Nut Type (P/N 1-840022, .5ml tube) on threads.

Transmission Assembly



Transmission Assembly (continued)

<i>Ref.</i>	<i>Part Number</i>	<i>Qty.</i>	<i>Description</i>	<i>Ref.</i>	<i>Part Number</i>	<i>Qty.</i>	<i>Description</i>
2	121-1897	1	Bracket-Cable	13	3229-11	2	Bolt-Carriage 1/4-20 X 5/8
3	121-1901-03	2	Bracket-Axle	14	104-7201	3	Nut-Nyloc 1/4-20 Flg
4	121-1904	1	Bracket-Transaxle, Torque	15	322-13	8	Screw-HH 5/16-18 X 2 3/4
5	121-1908	1	Transaxle ASM ●	16	322-10	1	Screw-HH 5/16-18 X 2
6	121-1909	1	Bracket-Transaxle	17	92-0049	2	Key-Machine 3/16 X 3/16 X 1 1/4
7	32120-93	2	Ring-Retaining	18	67-9410	2	Washer
8	3272-4	2	Pin-Cotter	19	1-808265	2	Pin-Clevis 1/4 X 3/4
9	121-1988	2	Spacer	20	39-3080	1	Clevis
10	142-4835	2	Wheel ASM	21	55-9620	3	Spacer
10:1	121-6081	1	Tire	22	63-4220	1	Spring-Compression
10:2	142-4836	1	Wheel-Rim	23	121-2018	1	Rod-Brake
10:3	5108	1	Valve	25	3217-5	2	Nut-Hex 1/4-20
11	3230-23	9	Bolt-Carriage 5/16-18 X 3/4 Short Neck	26	121-2039	1	Lever-Bypass
12	104-8300	18	Nut-Nyloc 5/16-18 Flg				

● Apply anti-seize compound to axle ends before installing tires.

Notes:

Notes:

Place Model No. and Serial No.
Label Here (Included in the Literature
Pack) or Fill in Below

Model No. _____

Serial No. _____

Date Purchased _____

Engine Model No. and Spec. No. _____

Engine Serial No. (E/No) _____



Z Turf Equipment is part of the Exmark® family of products.
©2022 Exmark Mfg. Co., Inc. All Rights Reserved. Printed in the USA.
415 Industrial Row • Beatrice, NE 68310 • (402) 223-6375 • Fax (402) 223-5489

www.zturfequipment.com

