

Handle Extension Kit

Zero-Turn Riding Mower

Model No. 145-3615

Installation Instructions

Installation

Loose Parts

Use the chart below to verify that all parts have been shipped.

Description	Qty.	Use
No parts required	–	Prepare the machine.
Handle extension	2	Install the handle extension.
Flange-head bolt (3/8 x 1-3/4 inches)	4	
Spacer	2	
Locknut (3/8 inch)	4	

Note: Determine the left and right sides of the machine from the normal operating position.

Preparing the Machine

1. Park the machine on a level surface.
2. Disengage the blade-control switch.
3. Move the motion-control levers outward to the NEUTRAL-LOCK position.
4. Engage the parking brake.
5. Shut off the engine and remove the key.



Installing the Handle Extension

1. Remove the motion-control lever (Figure 1).

Retain the motion-control lever and 2 flange-head bolts (3/8 x 1 inch) for later installation.

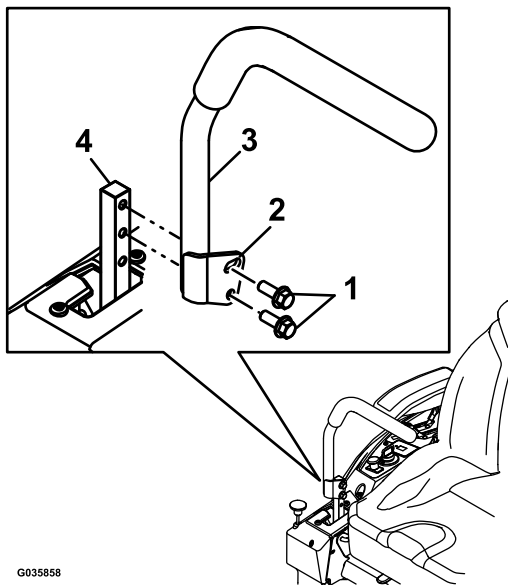


Figure 1

- | | |
|-------------------------------------|-------------------------|
| 1. Flange-head bolts (3/8 x 1 inch) | 3. Motion-control lever |
| 2. Slotted hole | 4. Control-arm shaft |

2. Loosely secure the handle extension to the motion-control lever using 2 flange-head bolts (3/8 x 1-3/4 inches), 1 spacer, and 2 locknuts (3/8 inch) as shown in Figure 2.

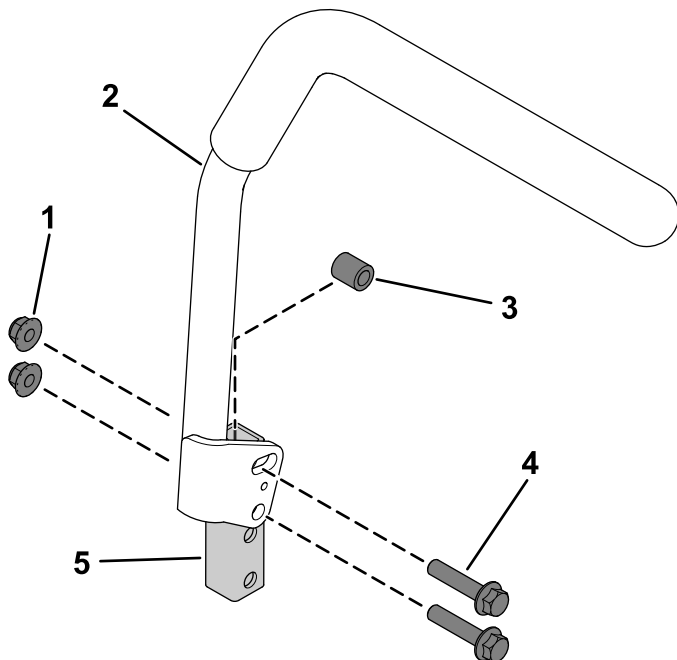


Figure 2

- | | |
|-------------------------|--|
| 1. Locknut (3/8 inch) | 4. Flange-head bolt (3/8 x 1-3/4 inches) |
| 2. Motion-control lever | 5. Handle extension |
| 3. Spacer | |

3. Secure the assembled motion-control lever to the control-arm shaft using the previously removed 2 flange-head bolts (3/8 x 1 inch) as shown in [Figure 3](#).

Torque the 2 flange-head bolts (3/8 x 1 inch) to 41 N·m (30 ft-lb).

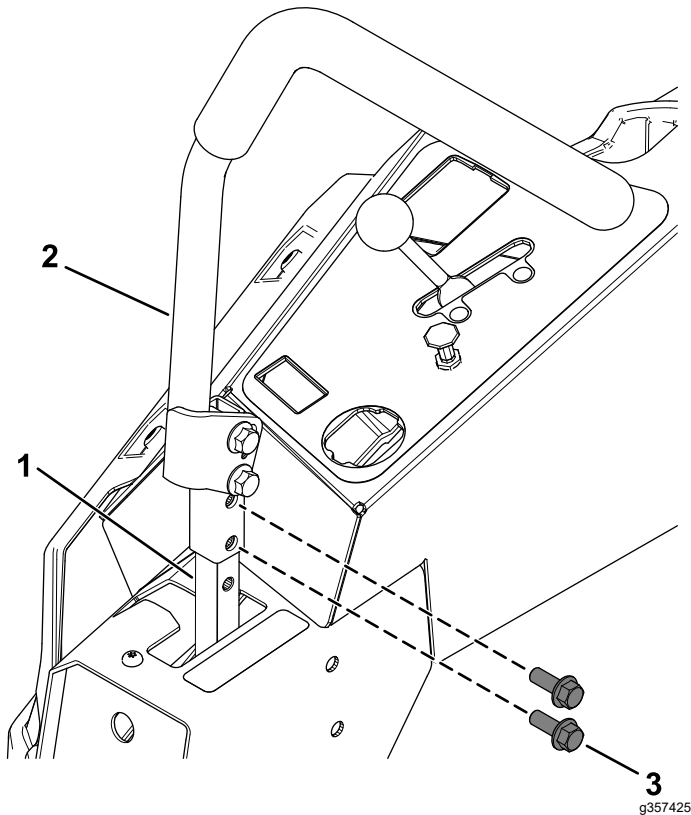


Figure 3

- | | |
|-----------------------------------|------------------------------------|
| 1. Control-arm shaft | 3. Flange-head bolt (3/8 x 1 inch) |
| 2. Assembled motion-control lever | |

4. Move the motion-control lever forward or rearward to the desired position in the slotted hole ([Figure 4](#)).

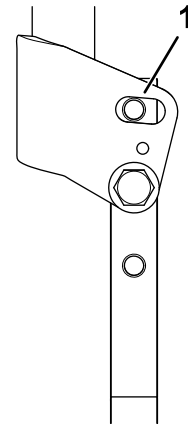


Figure 4

g248266

1. Slotted hole

5. Torque the 2 flange-head bolts (3/8 x 1-3/4 inches) to 41 N·m (30 ft-lb).
6. Repeat the installation on the other side of the machine.

