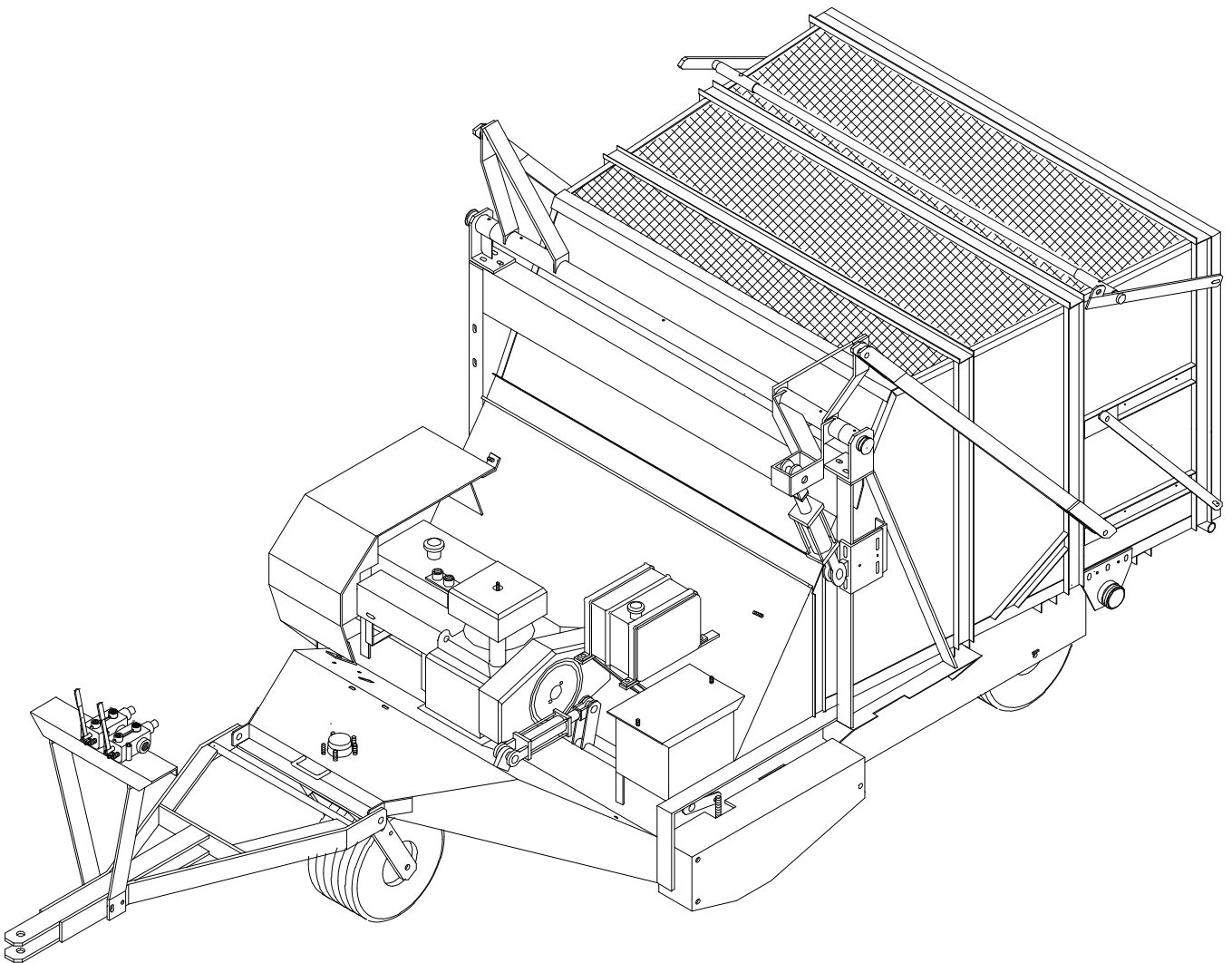


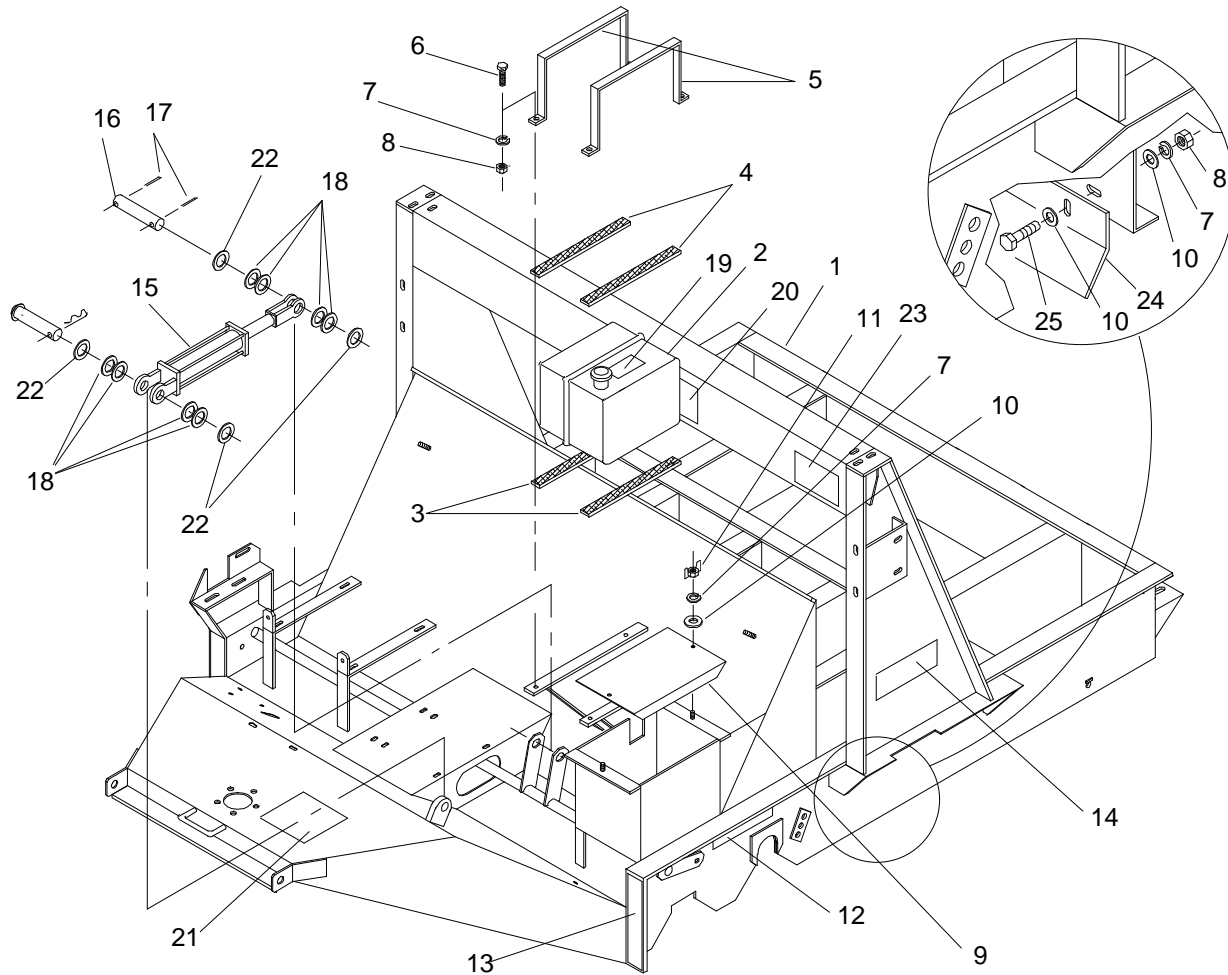


MODEL NO. 44084 - 20101 & UP  
MODEL NO. 44086 - 20101 & UP

**PARTS  
CATALOG**

**TURF SWEEPER 1655**





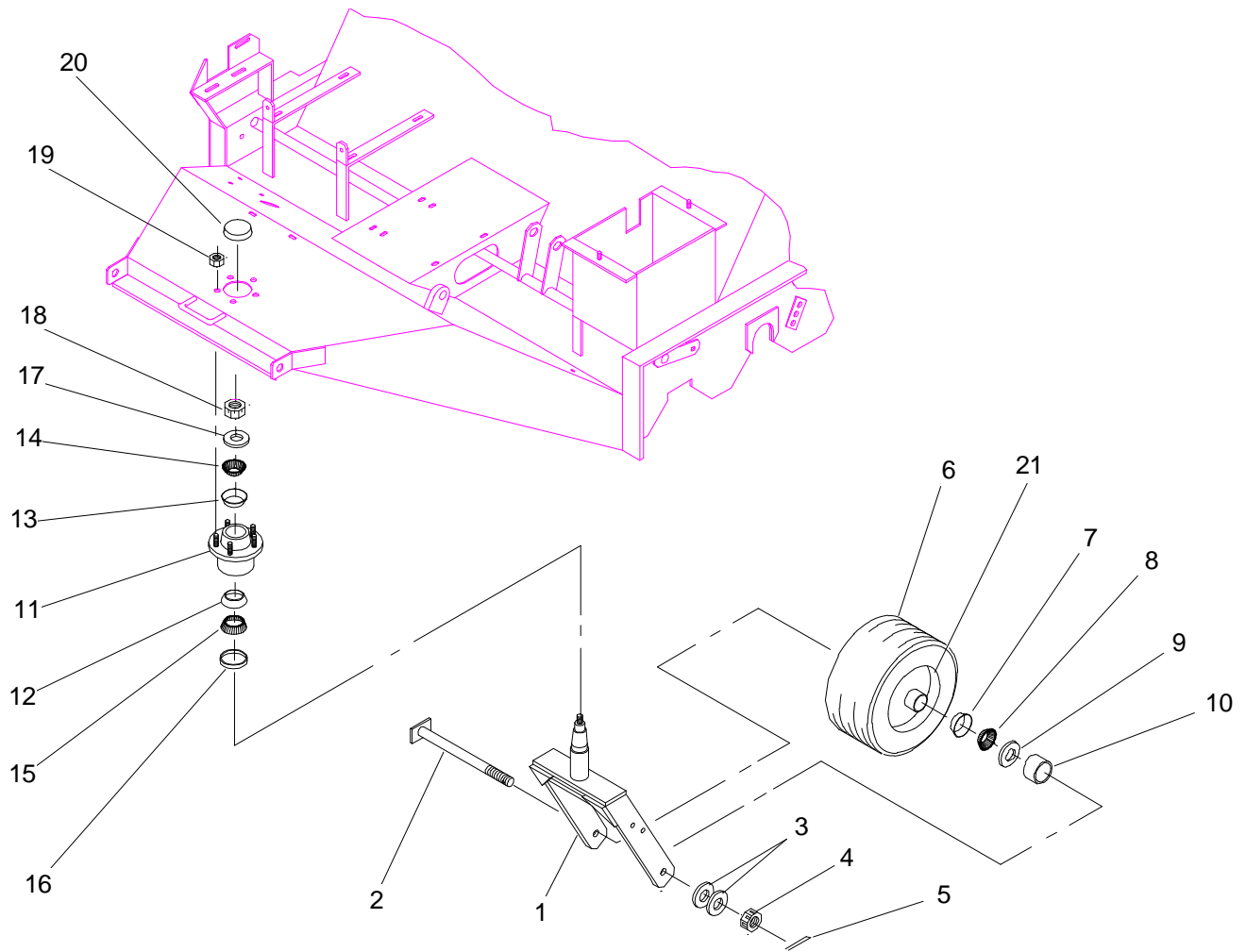
## MAIN FRAME ASSEMBLY

66E-001

Ref. No.	Part No.	Description	No. Used
1	66-005-0414	Main Frame	1
2	01-280-0010	Gas Tank, 5.3 gal.	1
*	01-201-0540	Hydraulic Fitting	1
*	01-280-0090	Fuel Shut-off	1
3	66-004-3341	Gas Tank Rubber Mount, 12"	2
4	66-004-3351	Gas Tank Rubber Mount, 16"	2
5	66-004-2391	Gas Tank Mounting Strap	2
6	01-178-0608	Capscrew - Hex Hd., 3/8" - 16 x 1"	4
7	01-166-0610	Lock Washer, 3/8"	10
8	01-188-0616	Hex Nut, 3/8" - 16	8
9	66-004-2841	Battery Box Lid	1
10	01-166-0600	Flat Washer, 3/8"	10
11	01-192-0070	Wing Nut, 3/8" - 16	2
12	01-506-0080	Decal - Danger	1
13	01-506-0150	Decal - Height Gauge	1

Ref. No.	Part No.	Description	No. Used
14	01-506-0760	Decal - Turf Sweeper 1655	2
15	01-301-0060	Cylinder, 4" stroke	1
*	01-301-0100	Seal Kit	1
16	66-004-2171	Cylinder Pin, 1" x 4-1/2"	1
17	01-151-0060	Cotter Pin, 3/16" x 1-1/2"	2
18	01-168-1614	Machinery Bushing, 1" ID x 14 ga.	8(var)
19	01-506-0460	Decal - Gas	1
20	01-506-0520	Decal - Toro	1
21	01-506-1150	Decal - Danger	1
22	01-168-1610	Machinery Bushing, 1" ID x 10 ga.	4(var)
23	01-506-0070	Decal - Danger	1
24	66-004-1621	Air Deflector	1
25	01-178-0610	Capscrew - Hex Hd., 3/8" - 16 x 1-1/4"	4

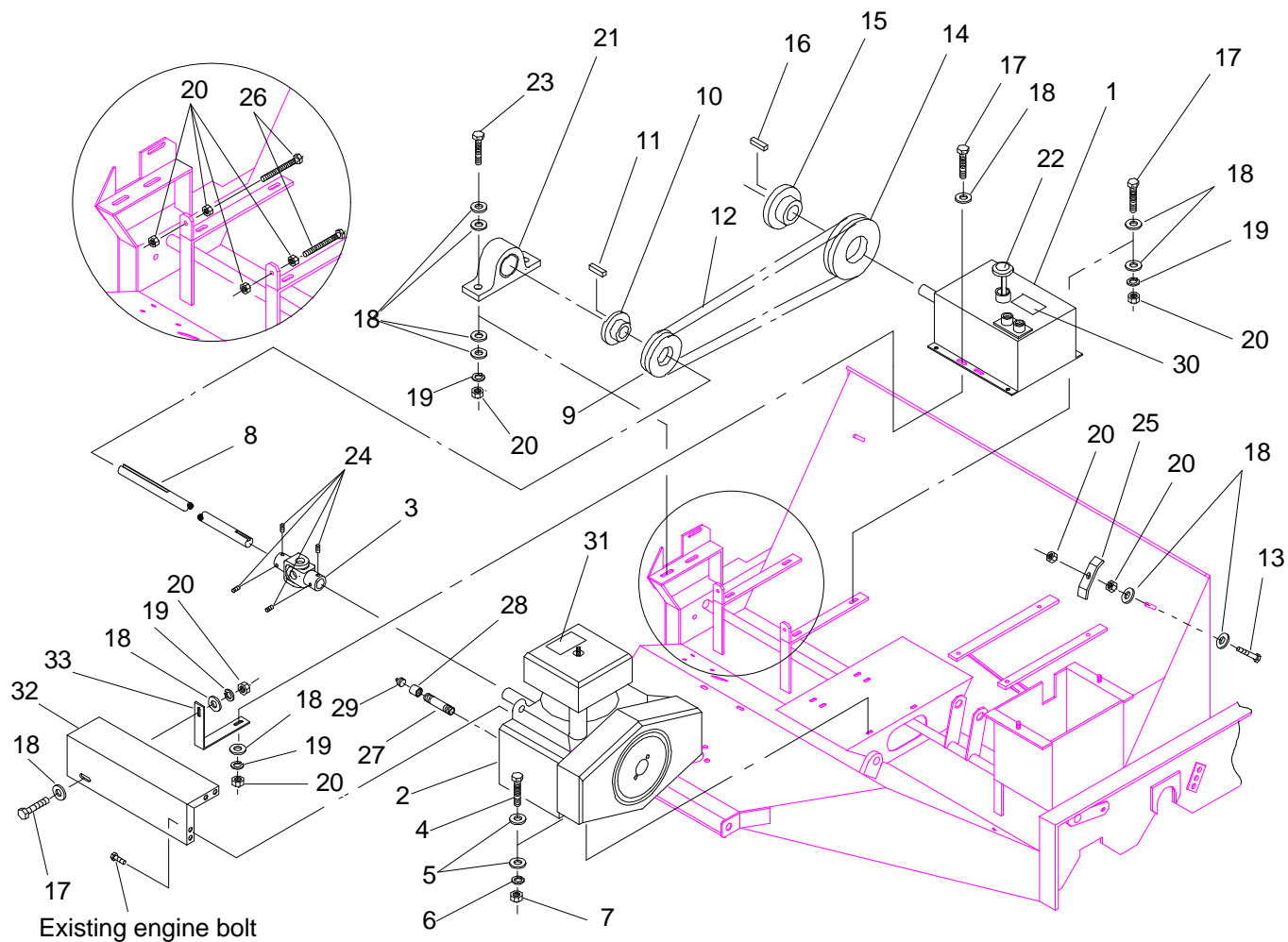
\* Not Illustrated



## WHEEL ASSEMBLY

66HL-002

Ref. No.	Part No.	Description	No. Used	Ref. No.	Part No.	Description	No. Used
1	66-005-3481	Yoke Assembly	1	11	01-269-0140	Steering Hub	1
2	48-005-0421	Axle Bolt Assembly	5	12	01-103-0040	Inner Race	1
3	01-168-1210	Machinery Bushing, 3/4" ID x 10 ga.	2(var)	13	01-103-0140	Outer Race	1
4	01-190-1210	Castle Nut, 3/4" - 10	5	14	01-102-0070	Outer Bearing	1
5	01-151-0060	Cotter Pin, 3/16" x 1-1/2"	7	15	01-102-0050	Inner Bearing	1
6	01-269-0320	Tire	5	16	01-405-0370	Seal	1
7	01-103-0130	Race	10	17	01-166-1220	"SAE" Flat Washer, 3/4"	1
8	01-102-0130	Bearing	10	18	01-190-1216	Castle Nut, 3/4" - 16	1
9	01-405-0460	Oil Seal	10	19	01-269-0300	Lug Nut, 1/2" - 20	5
10	01-269-0060	Wheel Spacer	10	20	01-286-0040	Dust Cap	1
				21	01-269-0340	Wheel	5



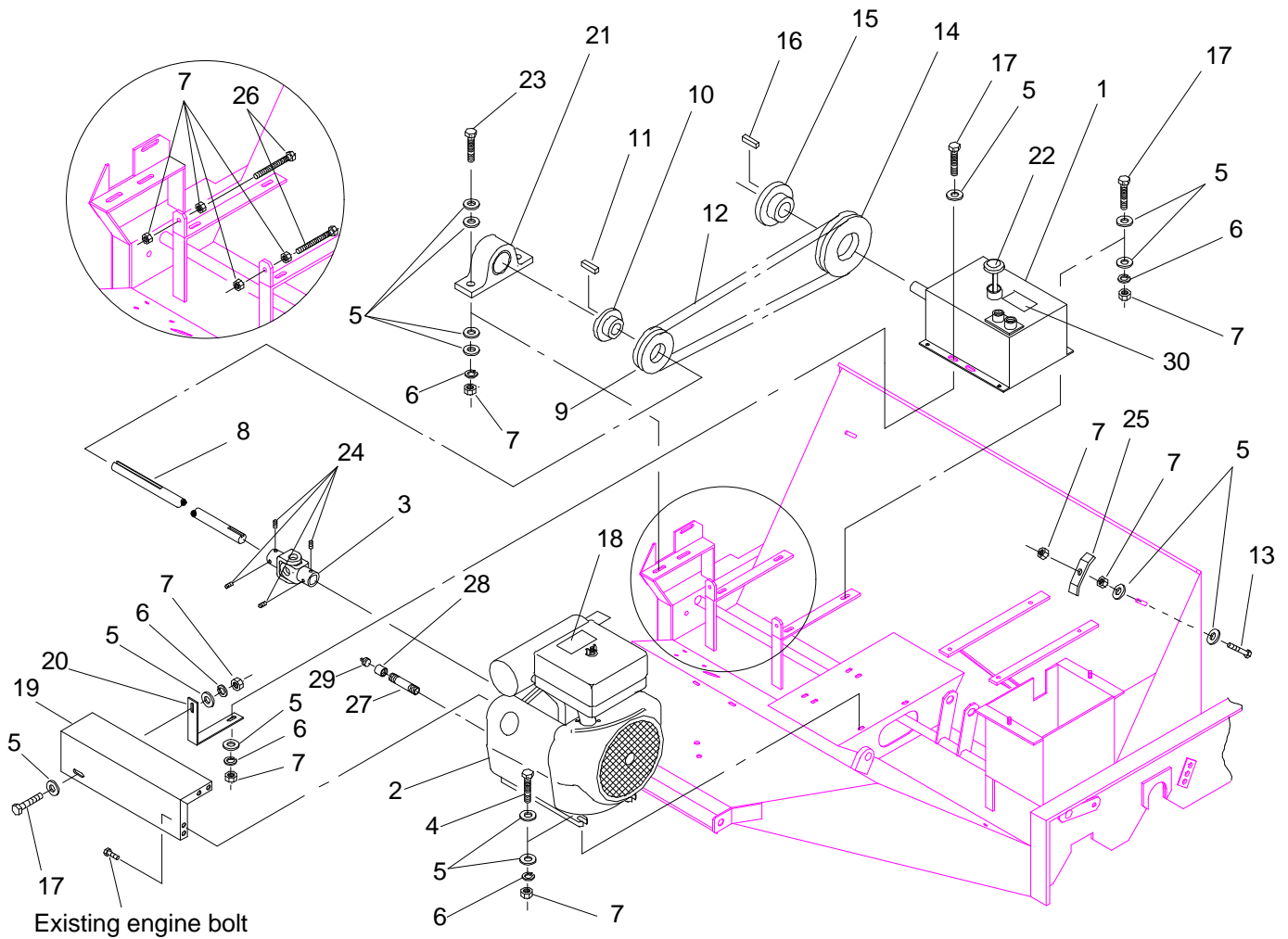
## BRIGGS & STRATTON ENGINE & PUMP MOUNTING MODEL NO. 44084

66HL-004

Ref. No.	Part No.	Description	No. Used
1	01-305-0010	Pump	1
*	01-305-0620	Seal Kit	1
2	01-270-1640	Engine, 18hp	1
3	01-263-0010	U-joint, 1"	1
4	01-178-0512	Capscrew - Hex Hd., 5/16" - 18 x 1-1/2"	4
5	01-166-0500	Flat Washer, 5/16"	8
6	01-166-0510	Lock Washer, 5/16"	4
7	01-188-0518	Hex Nut, 5/16" - 18	4
8	66-004-1951	Jack Shaft	1
9	01-260-0040	Sheave, 2/3V - 2.65	1
10	01-260-0190	Bushing, 1" JA	1
11	48-004-1931	Key, 1/4" Sq. x 7/8"	1
12	01-264-0190	Belt, 2/3V - 3.15	1
13	01-178-0614	Capscrew - Hex Hd., 3/8" - 16 x 1-3/4"	1
14	01-260-0020	Sheave, 2/3V - 8.00 SDS	1
15	01-260-0230	Bushing, 1" SDS	1
16	84-004-2851	Key, 1/4" Sq. x 1-3/16"	1
17	01-178-0608	Capscrew - Hex Hd., 3/8" - 16 x 1"	6
18	01-166-0600	Flat Washer, 3/8"	22
19	01-166-0610	Lock Washer, 3/8"	8

Ref. No.	Part No.	Description	No. Used
20	01-188-0616	Hex Nut, 3/8" - 16	14
21	01-113-0010	Bearing, 1"	1
22	41-002-0061	Dipstick	1
23	01-178-0616	Capscrew - Hex Hd., 3/8" - 16 x 2"	2
24	01-163-0030	Set Screw, 3/8" - 16 x 3/8"	4
25	48-004-3431	Hose Bracket	1
26	01-182-0624	Capscrew - Hex Hd., 3/8" - 16 x 3" all thread	2
27	01-456-0040	Pipe Nipple, 3/8" x 5"	1
28	01-453-0130	Pipe Coupling, 3/8"	1
29	01-451-0020	Pipe Plug, 3/8"	1
30	01-506-0560	Decal - Hydraulic Oil	1
31	01-506-0030	Decal - Danger	1
*	66-002-0061	Throttle Assembly	1
*	66-004-3561	Gas Line, 48"	1
*	01-202-0030	Hose Clamps	2
*	01-600-0050	Battery Cable, 10" (neg)	1
*	01-600-0060	Battery Cable, 36" (pos)	1
32	66-004-3041	Shaft Guard	1
33	66-004-3051	Shaft Guard Bracket	1

\* Not Illustrated



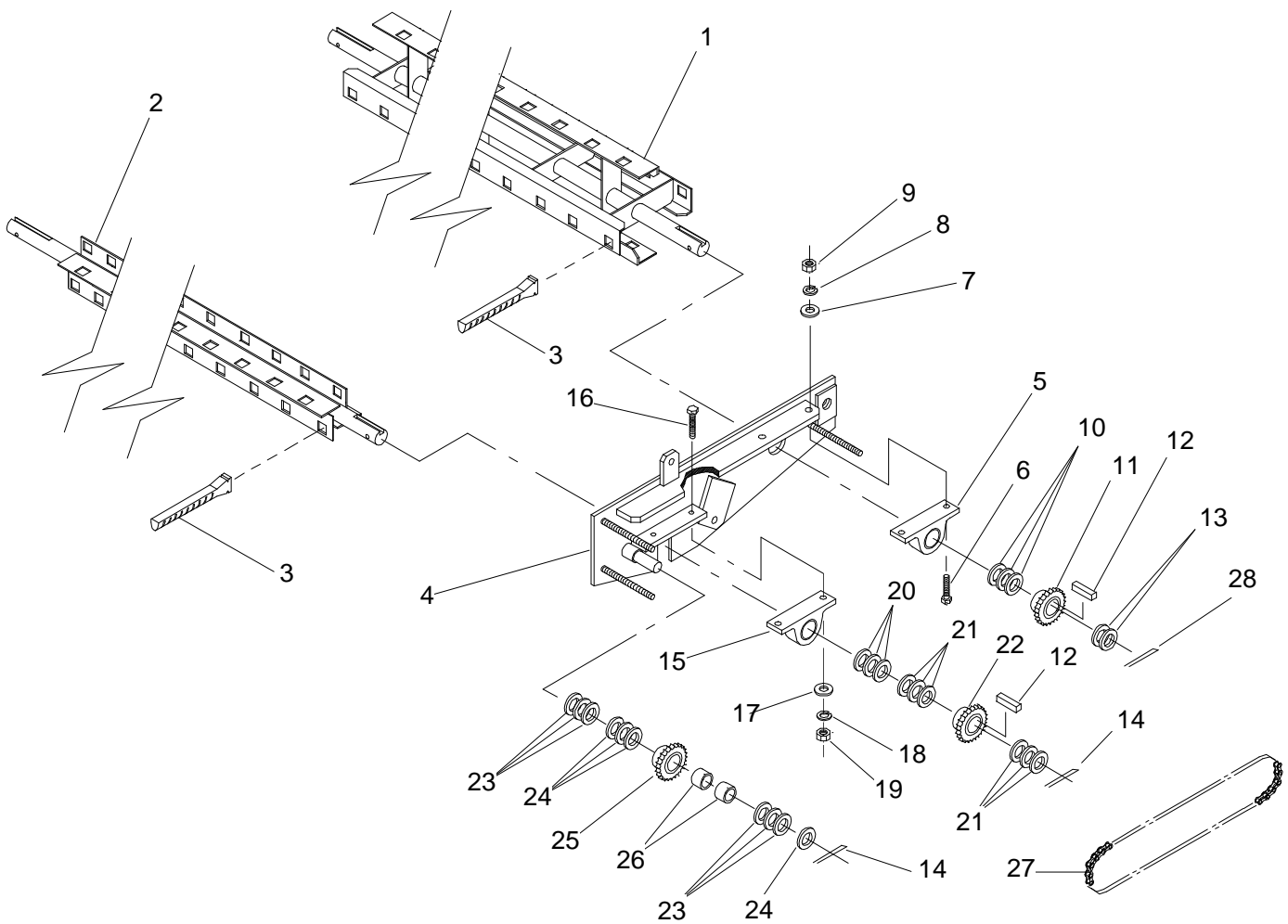
## ONAN ENGINE & PUMP MOUNTING MODEL NO. 44086

66HL-014

Ref. No.	Part No.	Description	No. Used
1	01-305-0010	Pump	1
*	01-305-0620	Seal Kit	1
2	01-270-1370	Engine, 20hp	1
3	01-263-0050	U-joint	1
4	01-178-0612	Capscrew - Hex Hd., 3/8" - 16 x 1-1/2"	4
5	01-166-0600	Flat Washer, 3/8"	30
6	01-166-0610	Lock Washer, 3/8"	12
7	01-188-0616	Hex Nut, 3/8" - 16	18
8	66-004-1951	Jack Shaft	1
9	01-260-0040	Sheave, 2/3V - 2.65	1
10	01-260-0190	Bushing, 1" JA	1
11	48-004-1931	Key, 1/4" Sq. x 7/8"	1
12	01-264-0190	Belt, 2/3V - 3.15	1
13	01-178-0614	Capscrew - Hex Hd., 3/8" - 16 x 1-3/4"	1
14	01-260-0020	Sheave, 2/3V - 8.00 SDS	1
15	01-260-0230	Bushing, 1" SDS	1
16	84-004-2851	Key, 1/4" Sq. x 1-3/16"	1
17	01-178-0608	Capscrew - Hex Hd., 3/8" - 16 x 1"	6
18	01-506-0030	Decal - Danger	1
19	66-004-3041	Shaft Guard	1

Ref. No.	Part No.	Description	No. Used
20	66-004-3051	Shaft Guard Bracket	1
21	01-113-0010	Bearing, 1"	1
22	41-002-0061	Dipstick	1
23	01-178-0616	Capscrew - Hex Hd., 3/8" - 16 x 2"	2
24	01-163-0030	Set Screw, 3/8" - 16 x 3/8"	4
25	48-004-3431	Hose Bracket	1
26	01-182-0624	Capscrew - Hex Hd., 3/8" - 16 x 3" all thread	2
27	01-456-0110	Pipe Nipple, 3/8" x 2"	1
28	01-453-0130	Pipe Coupling, 3/8"	1
29	01-451-0020	Pipe Plug, 3/8"	1
30	01-506-0560	Decal - Hydraulic Oil	1
*	66-002-4201	Throttle Assembly	1
*	01-273-0240	Muffler w/clamps	1
*	01-273-0250	Tube Kit w/gaskets	1
*	01-273-0140	Gaskets	2
*	01-270-1430	Governor Control	1
*	66-004-3561	Gas Line, 48"	1
*	01-202-0030	Hose Clamps	2
*	01-600-0050	Battery Cable, 10" (neg)	1
*	01-600-0030	Battery Cable, 48" (pos)	1

\* Not Illustrated



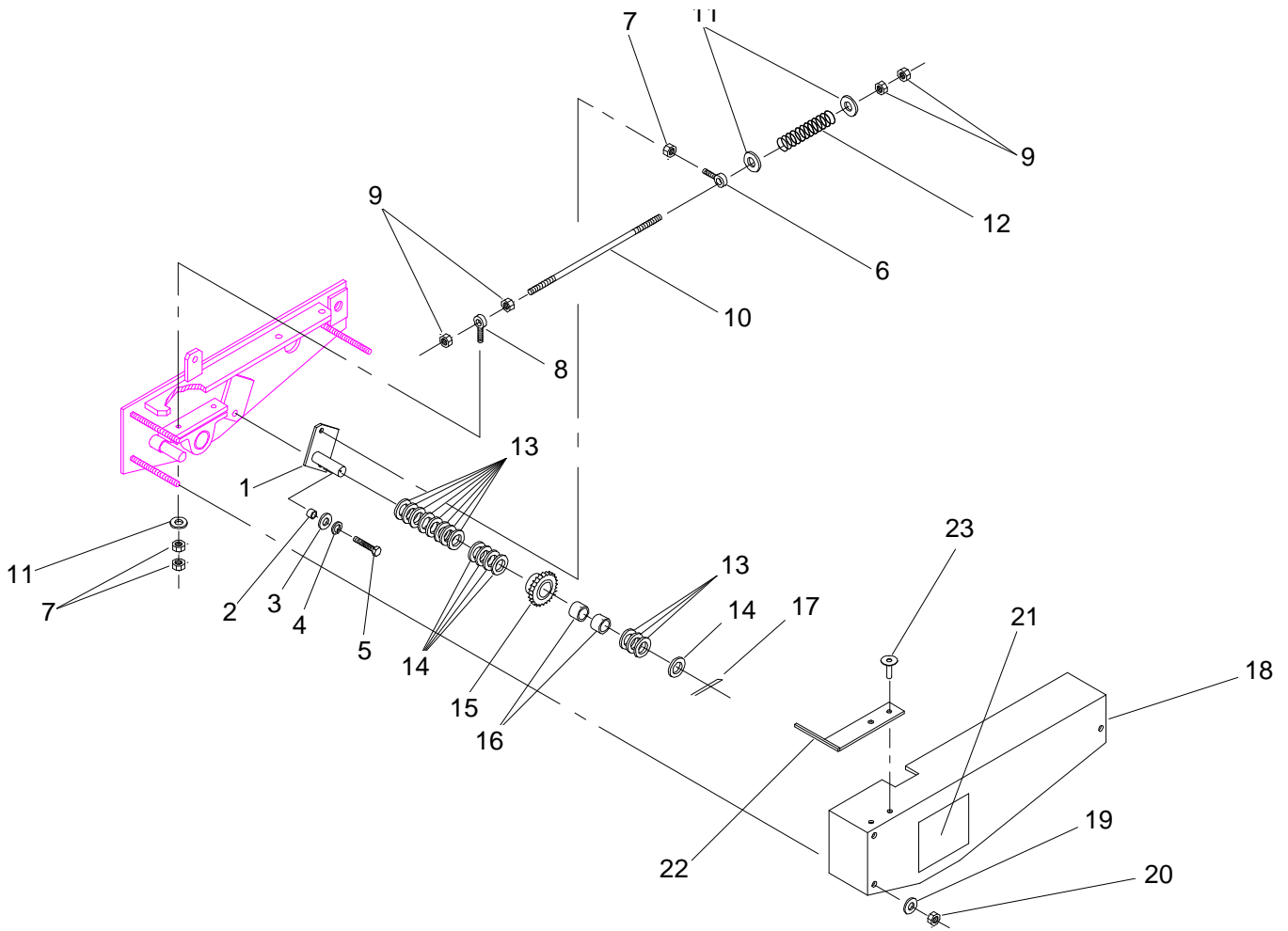
## SWEEPER REEL & TIMING CHAIN ASSEMBLY

54-008

Ref. No.	Part No.	Description	No. Used
1	66-005-0242	Rear Reel Assembly	1
2	66-005-0231	Front Reel Assembly	1
3	01-279-0010	Rubber Fingers	140
4	48-005-0182	Reel Plate Assembly, L.H.	1
5	01-113-0020	Bearing (rear reel), 1-1/4"	1
6	01-178-0814	Capscrew - Hex Hd., 1/2" - 13 x 1-3/4"	2
7	01-166-0800	Flat Washer, 1/2"	2
8	01-166-0810	Lock Washer, 1/2"	2
9	01-188-0813	Hex Nut, 1/2" - 13	2
10	01-168-2014	Machinery Bushing, 1-1/4" ID x 14 ga.	3(var)
11	01-262-0520	Sprocket (rear reel), 1-1/4"	1
12	48-004-1931	Key, 1/4" Sq. x 7/8"	2
13	01-168-2010	Machinery Bushing, 1-1/4" ID x 10 ga.	2
14	01-151-0060	Cotter Pin, 3/16" x 1-1/2"	2
15	01-113-0010	Bearing (front reel), 1"	1
16	01-178-0612	Capscrew - Hex Hd., 3/8" - 16 x 1-1/2"	1

Ref. No.	Part No.	Description	No. Used
17	01-166-0600	Flat Washer, 3/8"	1
18	01-166-0610	Lock Washer, 3/8"	1
19	01-188-0616	Hex Nut, 3/8" - 16	1
20	01-168-1610	Machinery Bushing, 1" ID x 10 ga.	3(var)
21	01-168-1614	Machinery Bushing, 1" ID x 14 ga.	6(var)
22	01-262-0530	Sprocket (front reel), 1"	1
23	01-168-1410	Machinery Bushing, 7/8" ID x 10 ga.	6(var)
24	01-168-1414	Machinery Bushing, 7/8" ID x 14 ga.	4(var)
25	01-262-0610	Sprocket	1
26	01-105-0520	Needle Bearing	2
27	54-004-0941	Reel Chain, #50 - 72 pitches	1
*	01-251-0020	Offset Link	1
*	48-002-5441	Idler Sprocket Assembly (Incl. Ref. #25, 26)	1
28	01-151-0020	Cotter Pin, 3/16" x 2"	1

\* Not Illustrated

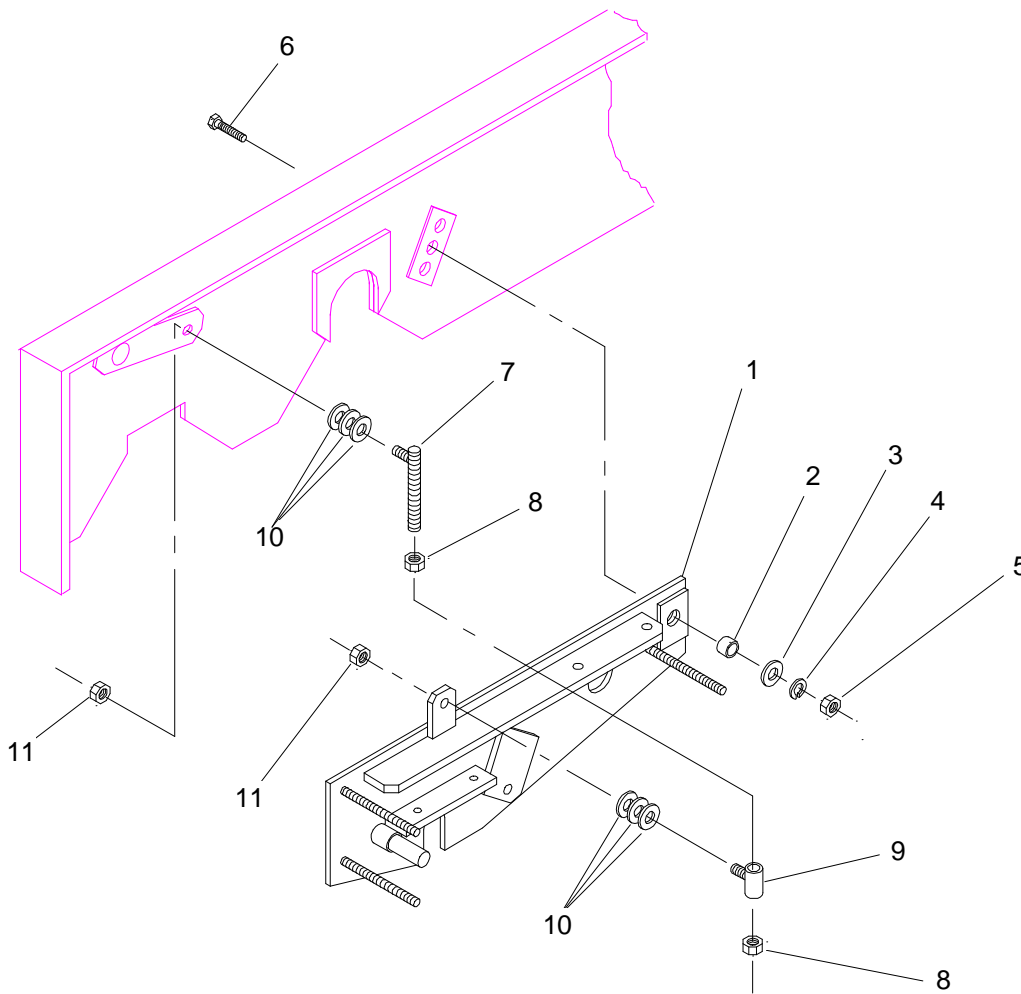


## CHAIN IDLER & GUARD ASSEMBLY

166-001

Ref. No.	Part No.	Description	No. Used	Ref. No.	Part No.	Description	No. Used
1	48-005-0191	Idler Shaft Assembly	1	15	01-262-0610	Sprocket 7/8" ID x 14 ga.	1
2	48-004-3881	Spacer, .400" lg.	1	16	01-105-0520	Needle Bearing	2
3	01-166-0820	"SAE" Flat Washer, 1/2"	1	17	01-151-0060	Cotter Pin, 3/16" x 1-1/2"	1
4	01-166-0810	Lock Washer, 1/2"	1	18	48-005-0162	Idler Cover	1
5	01-178-0810	Capscrew - Hex Hd., 1/2" - 13 x 1-1/4"	1	19	01-166-0700	Flat Washer, 7/16"	3
6	02-250-0020	Rod End Bearing (short)	1	20	01-189-0714	Lock Nut, 7/16" - 14	3
7	01-191-0624	Jam Nut, 3/8" - 24	3	21	01-506-0050	Decal - Danger	1
8	01-250-0020	Rod End Bearing	1	*	48-002-5441	Idler Sprocket Assembly (Incl. Ref. # 15, 16)	1
9	01-188-0616	Hex Nut, 3/8" - 16	4	22	66-005-0371	Reel Height Indicator	1
10	48-004-3891	Idler Spring Rod	1	23	01-161-0030	Pop Rivet, 3/16" x 3/8"	2
11	01-166-0600	Flat Washer, 3/8"	3				
12	01-261-0300	Spring (idler tension)	1				
13	01-168-1410	Machinery Bushing, 7/8" ID x 10 ga.	11(var)				
14	01-168-1414	Machinery Bushing,					

\* Not Illustrated

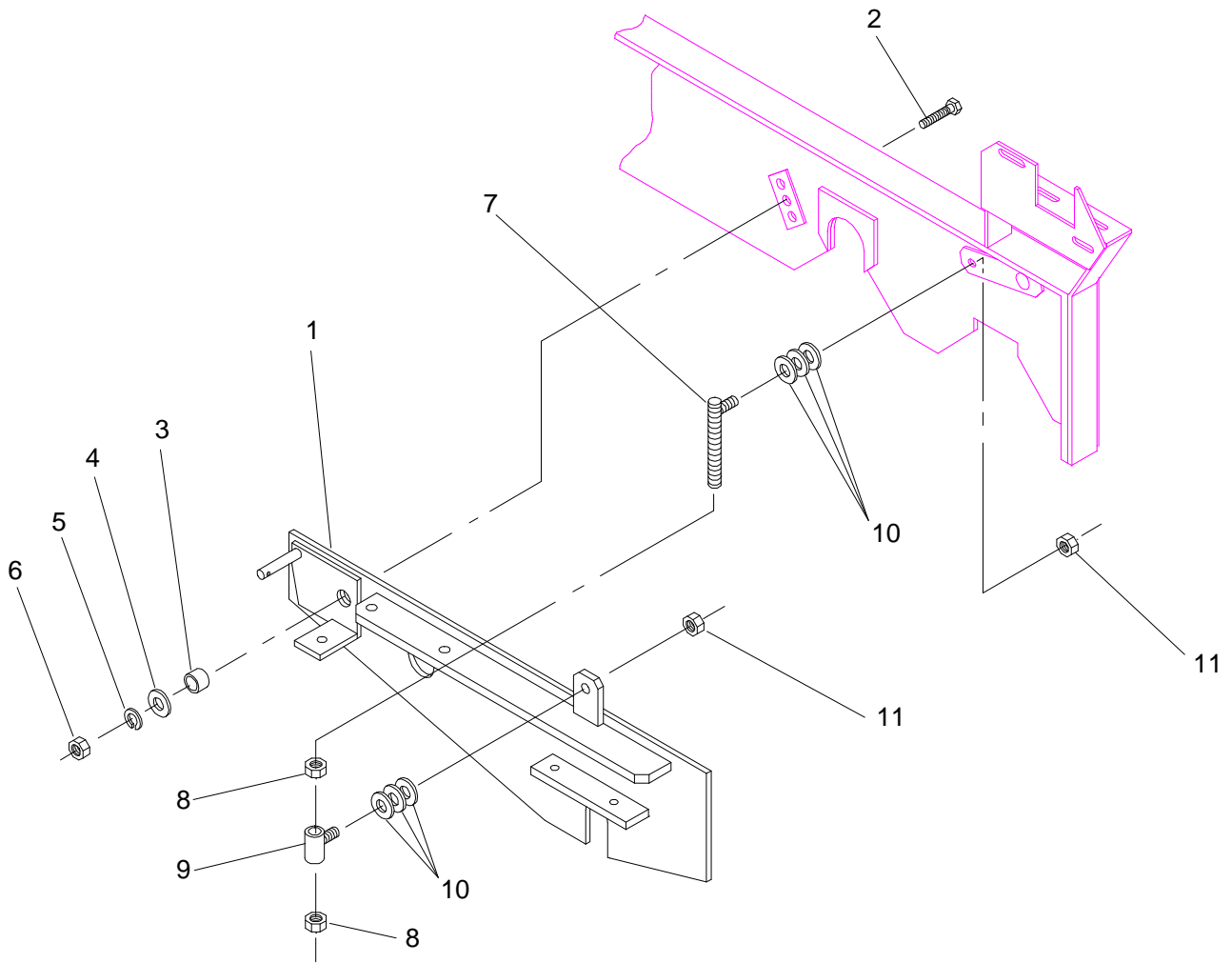


## REEL LIFT ASSEMBLY - L.H.

66HL-005

Ref. No.	Part No.	Description	No. Used
1	48-005-0182	Reel Plate Assembly-L.H.	1
2	48-004-5841	Reel Plate Spacer, .906" lg.	1
3	01-166-1020	"SAE" Flat Washer, 5/8"	1
4	01-166-1010	Lock Washer, 5/8"	1
5	01-191-1011	Jam Nut, 5/8" - 11	1
6	01-178-1016	Capscrew - Hex Hd., 5/8" - 11 x 2"	1

Ref. No.	Part No.	Description	No. Used
7	66-005-0201	Reel Lift Rod Assembly-L.H.	1
8	01-188-1011	Hex Nut, 5/8" - 11	2
9	48-005-0591	Reel Lift Tube Assembly	1
10	01-166-0800	Flat Washer, 1/2"	6
11	01-189-0813	Lock Nut, 1/2" - 13	2

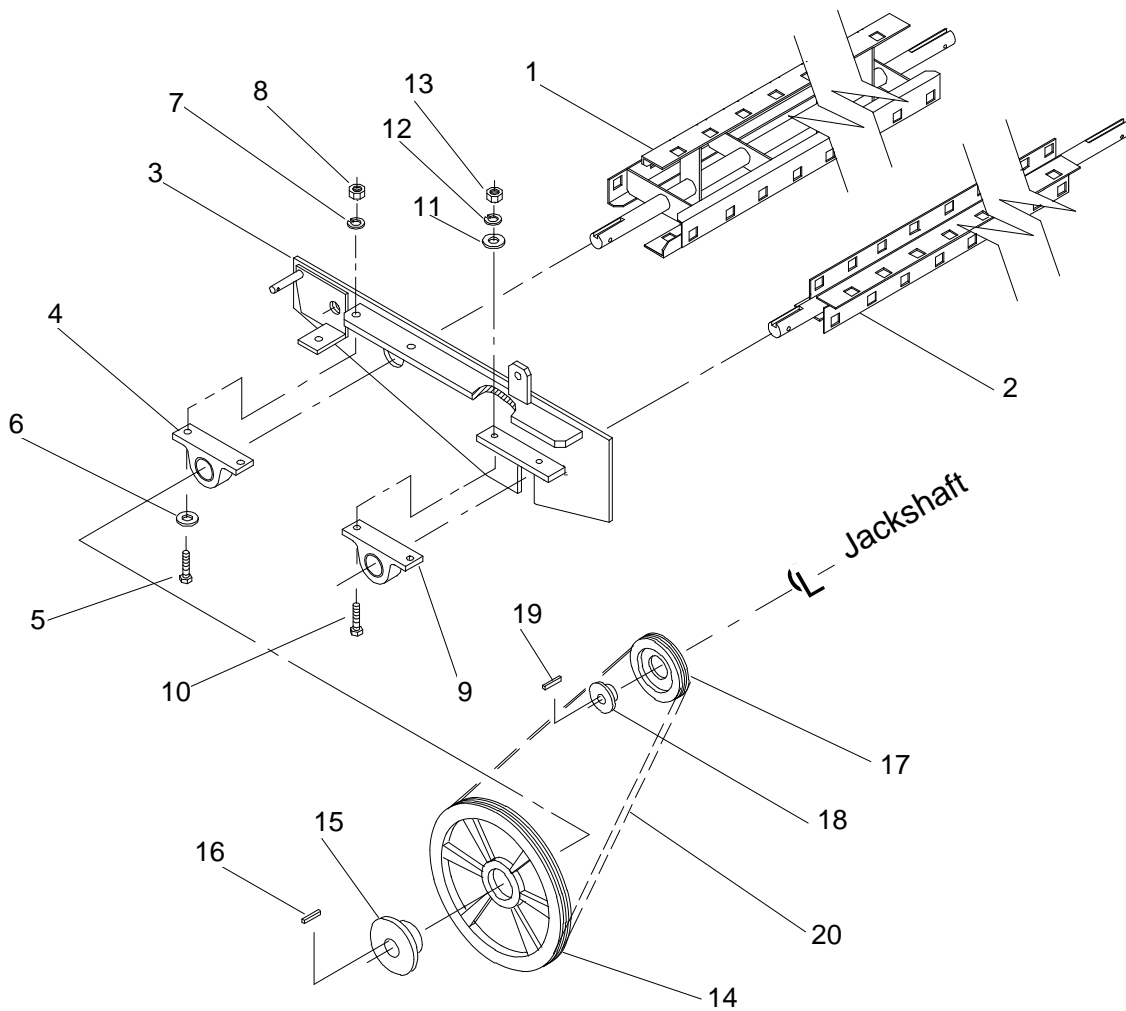


## REEL LIFT ASSEMBLY - R.H.

66HL-006

Ref. No.	Part No.	Description	No. Used
1	48-005-0172	Reel Plate Assembly-R.H.	1
2	01-178-1016	Capscrew - Hex Hd., 5/8" - 11 x 2"	1
3	48-004-5841	Reel Plate Spacer, .906" lg.	1
4	01-166-1020	"SAE" Flat Washer, 5/8"	1
5	01-166-1010	Lock Washer, 5/8"	1

Ref. No.	Part No.	Description	No. Used
6	01-191-1011	Jam Nut, 5/8" - 11	1
7	66-005-0201	Reel Lift Rod Assembly-R.H.	1
8	01-188-1011	Hex Nut, 5/8" - 11	2
9	48-005-0591	Reel Lift Tube Assembly	1
10	01-166-0800	Flat Washer, 1/2"	6
11	01-189-0813	Lock Nut, 1/2" - 13	2

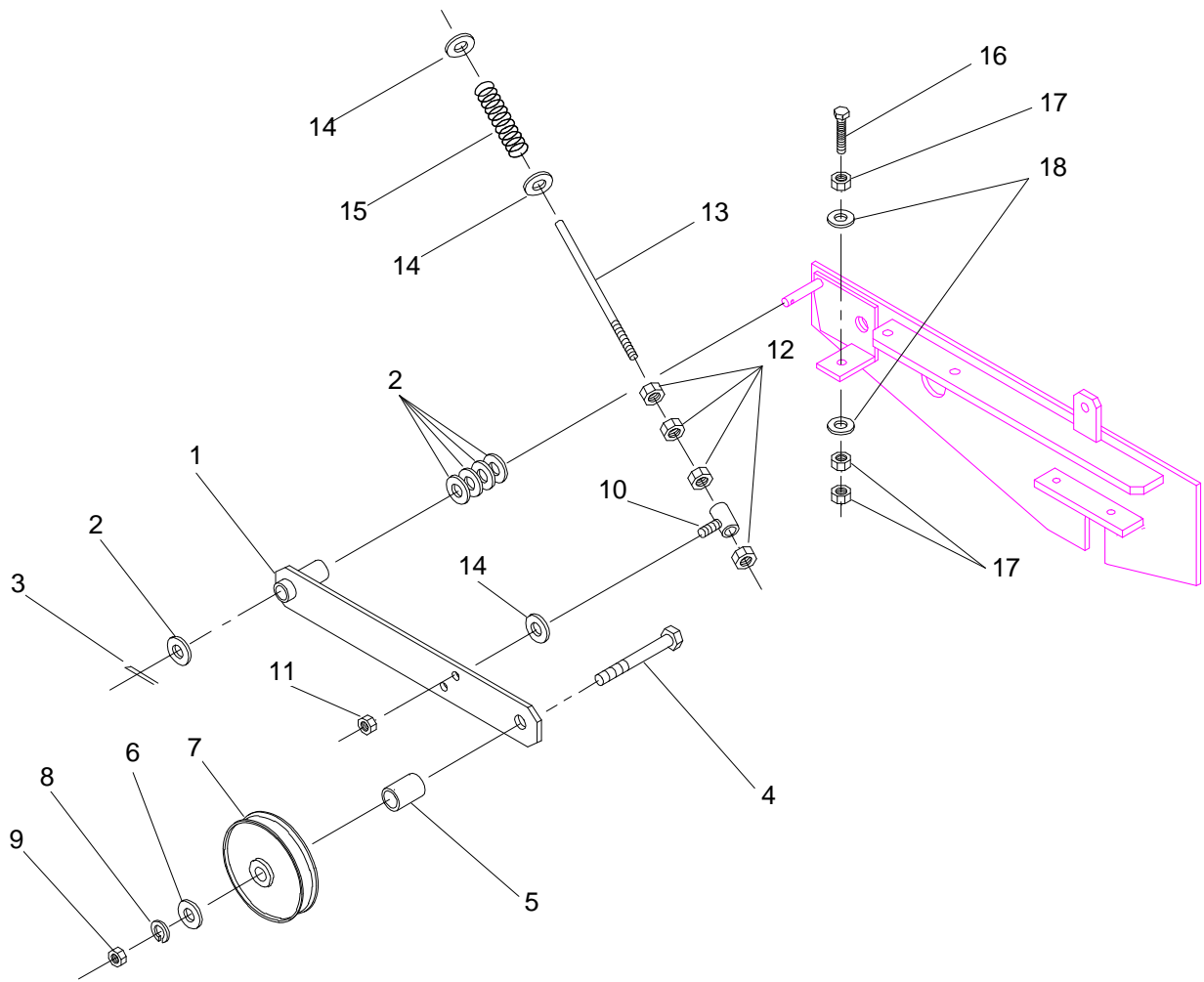


## BELT DRIVE ASSEMBLY

66HL-007

Ref. No.	Part No.	Description	No. Used
1	66-005-0242	Rear Reel Assembly	1
2	66-005-0231	Front Reel Assembly	1
3	48-005-0172	Reel Plate Assembly-R.H.	1
4	01-113-0020	Bearing, 1-1/4"	1
5	01-178-0814	Capscrew - Hex Hd., 1/2" - 13 x 1-3/4"	2
6	01-166-0800	Flat Washer, 1/2"	2
7	01-166-0810	Lock Washer, 1/2"	2
8	01-188-0813	Hex Nut, 1/2" - 13	2
9	01-113-0010	Bearing, 1"	1
10	01-178-0612	Capscrew - Hex Hd., 3/8" - 16 x 1-1/2"	2

Ref. No.	Part No.	Description	No. Used
11	01-166-0600	Flat Washer, 3/8"	2
12	01-166-0610	Lock Washer, 3/8"	2
13	01-188-0616	Hex Nut, 3/8" - 16	2
14	01-260-0010	Sheave, 3/3V - 10.60	1
15	01-260-0290	Bushing, 1-1/4" SK	1
16	66-004-3211	Key, 1/4" Sq. x 1-3/4"	1
17	01-260-0030	Sheave, 3/3V - 4.12SH	1
18	01-260-0280	Bushing, 1" SH	1
19	82-004-1171	Key, 1/4" Sq. x 1-1/8"	1
20	01-264-0010	Belt, 3/3V - 7.50	1

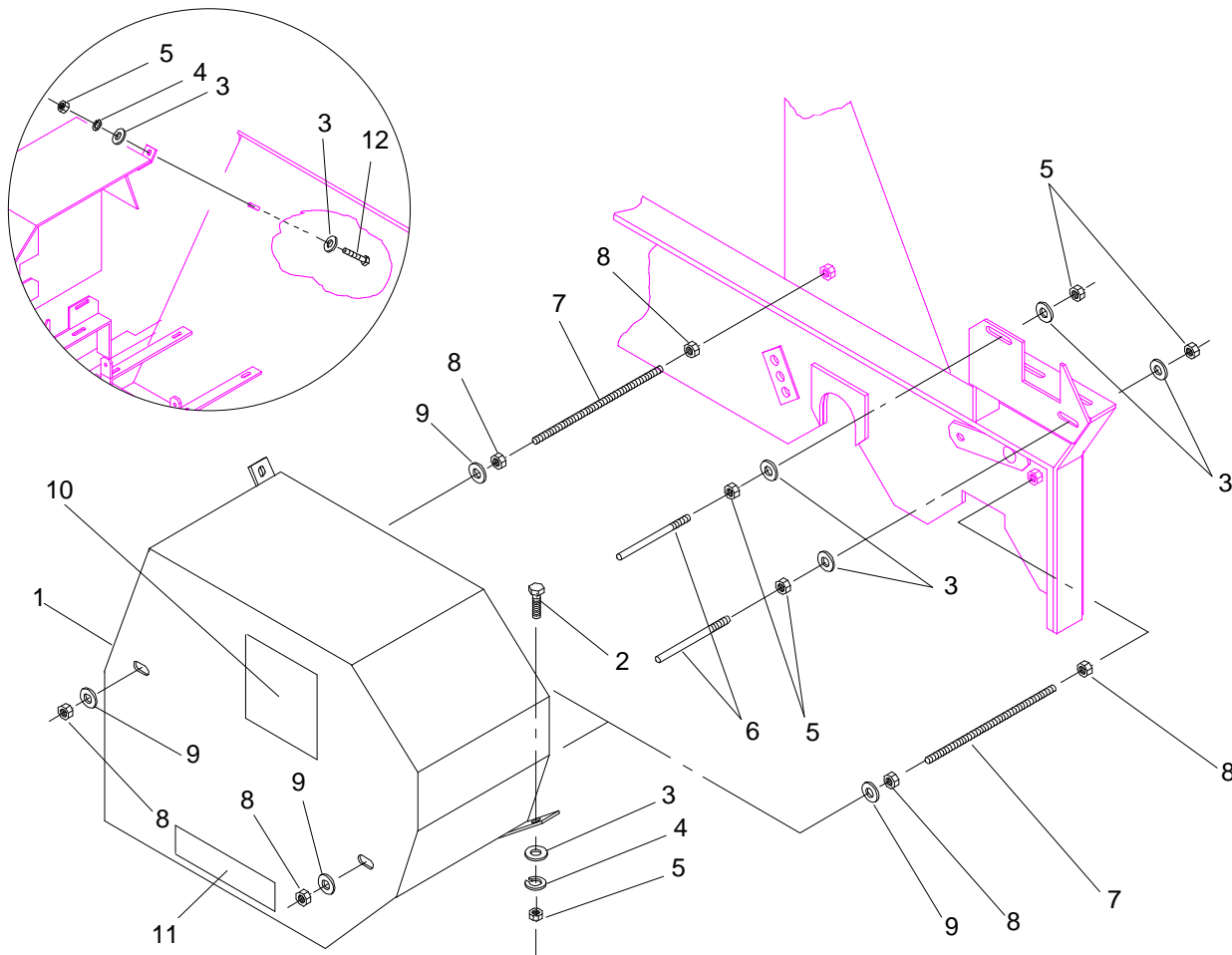


## BELT IDLER ASSEMBLY

66HL-008

Ref. No.	Part No.	Description	No. Used
1	48-005-0611	Idler Arm	1
2	01-168-1014	Machinery Bushing, 5/8" ID x 14 ga.	5
3	01-151-0100	Cotter Pin, 3/16" x 1"	1
4	01-178-1028	Capscrew - Hex Hd., 5/8" - 11 x 3-1/2"	1
5	48-004-3471	Spacer, .875" lg.	1
6	01-166-1000	Flat Washer, 5/8"	2
7	01-268-0010	Pulley	1
8	01-166-1010	Lock Washer, 5/8"	1
9	01-188-1011	Hex Nut, 5/8" - 11	1
10	48-005-0121	Spring Tension Adjustment	1

Ref. No.	Part No.	Description	No. Used
11	01-189-0616	Lock Nut	1
12	01-188-0616	Hex Nut, 3/8" - 16	4
13	48-004-1711	Idler Spring Rod	1
14	01-166-0600	Flat Washer, 3/8"	3
15	01-261-0300	Spring	1
16	01-182-0832	Capscrew - Hex Hd., 1/2" - 13 x 4" all thread	1
17	01-188-0813	Hex Nut, 1/2" - 13	3
18	01-166-0800	Flat Washer, 1/2"	2

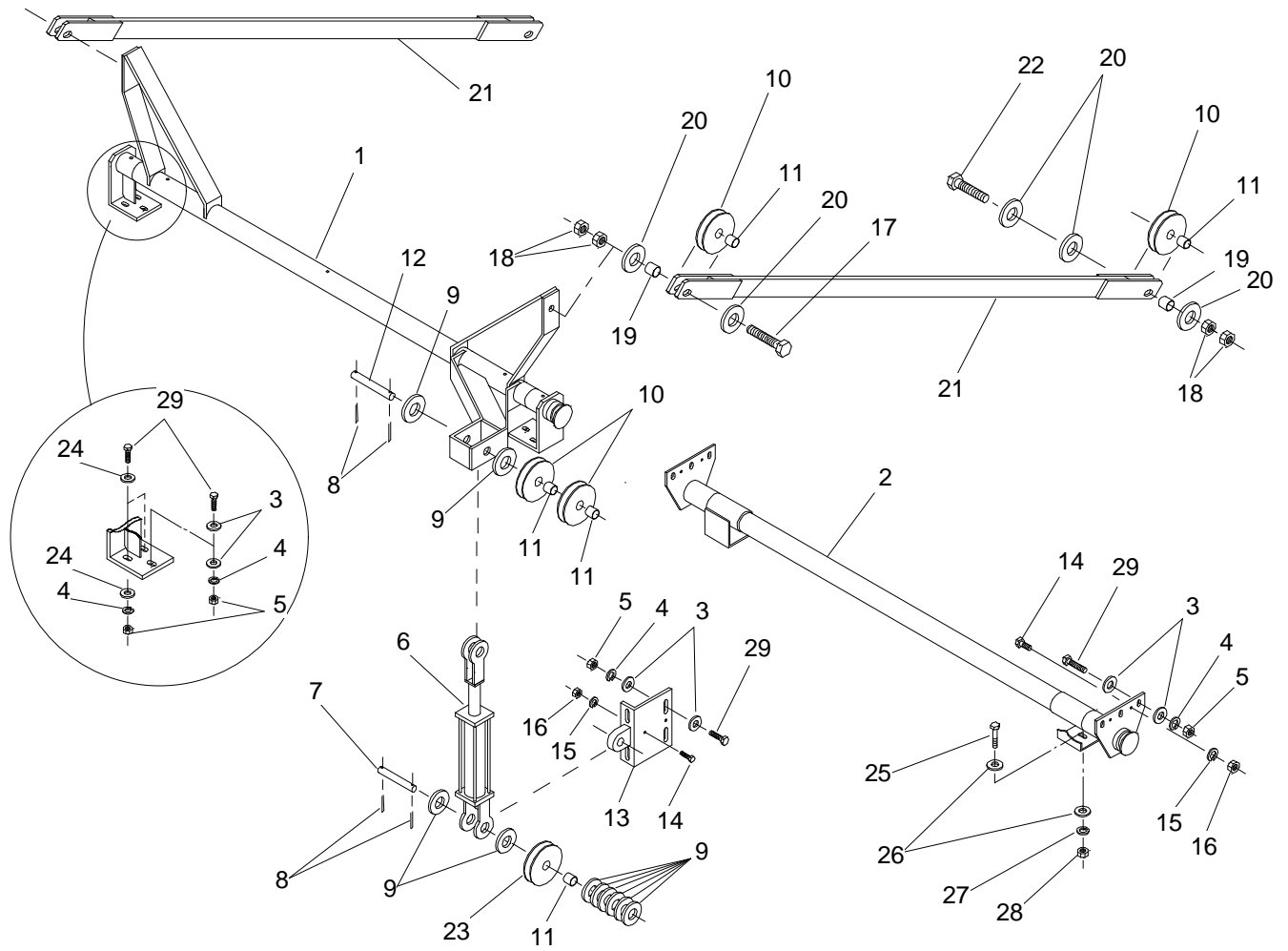


## BELT GUARD & BELT SLIP PINS

66HL-009

Ref. No.	Part No.	Description	No. Used
1	66-005-0302	Belt Guard	1
2	01-178-0608	Capscrew - Hex Hd., 3/8" - 16 x 1"	1
3	01-166-0600	Flat Washer, 3/8"	7
4	01-166-0610	Lock Washer, 3/8"	2
5	01-188-0616	Hex Nut, 3/8" - 16	6
6	48-004-1211	Belt Slip Pin	2

Ref. No.	Part No.	Description	No. Used
7	01-650-0400	All Thread, 7/16" - 14 x 7"	2
8	01-188-0714	Hex Nut, 7/16" - 14	6
9	01-166-0700	Flat Washer, 7/16"	4
10	01-506-0040	Decal - Danger	1
11	01-506-0080	Decal - Danger	1
12	01-182-0614	Capscrew - Hex Hd., 3/8" - 16 x 1-3/4"	1



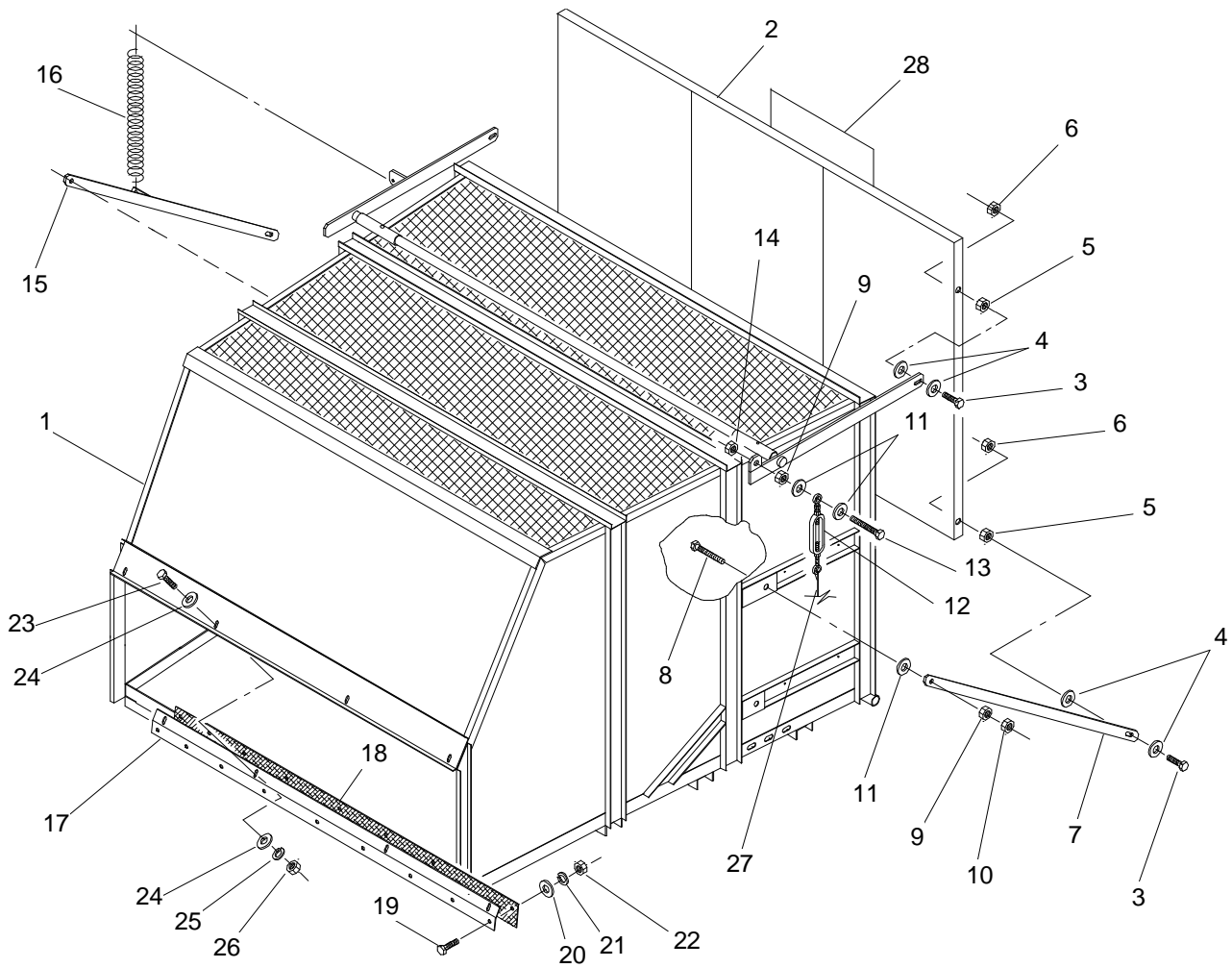
## DUMP ARM ASSEMBLY

66E-010

Ref. No.	Part No.	Description	No. Used
1	66-005-3501	Dump Arm Assembly	1
2	66-005-0342	Lower Pivot Pipe Assembly	1
3	01-166-0800	Flat Washer, 1/2"	24
4	01-166-0810	Lock Washer, 1/2"	16
5	01-188-0813	Hex Nut, 1/2" - 13	16
6	01-301-0060	Cylinder, 4" stroke	1
*	01-301-0100	Seal Kit	1
7	66-004-4141	Cylinder Pin, 5-1/2"	1
8	01-151-0060	Cotter Pin, 3/16" x 1-1/2"	4
9	01-166-1600	Flat Washer, 1"	9(var)
10	01-268-0050	Cable Pulley	4
11	01-125-0030	Bronze Bushing	5
12	66-004-2181	Cylinder Pin, 6-3/4"	1
13	65-005-0281	Dump Cylinder Pivot Assembly	1
14	01-178-0608	Capscrew - Hex Hd., 3/8" - 16 x 1"	6
15	01-166-0610	Lock Washer, 3/8"	6
16	01-188-0616	Hex Nut, 3/8" - 16	6
17	01-178-1228	Capscrew - Hex Hd.,	

Ref. No.	Part No.	Description	No. Used
		3/4" - 10 x 3-1/2"	2
18	01-191-1210	Jam Nut, 3/4" - 10	8
19	66-004-2141	Hopper Pivot Arm Bushing	4
20	01-166-1200	Flat Washer, 3/4"	10
21	66-005-0251	Upper Arm Assembly	2
22	01-178-1236	Capscrew - Hex Hd., 3/4" - 10 x 4-1/2"	2
23	01-268-0040	Cable Pulley	1
24	01-166-0820	"SAE" Flat Washer, 1/2"	8
25	01-178-1016	Capscrew - Hex Hd., 5/8" - 11 x 2"	2
26	01-166-1000	Flat Washer, 5/8"	4
27	01-166-1010	Lock Washer, 5/8"	2
28	01-188-1011	Hex Nut, 5/8" - 11	2
29	01-178-0812	Capscrew - Hex Hd., 1/2" - 13 x 1-1/2"	16

\* Not Illustrated



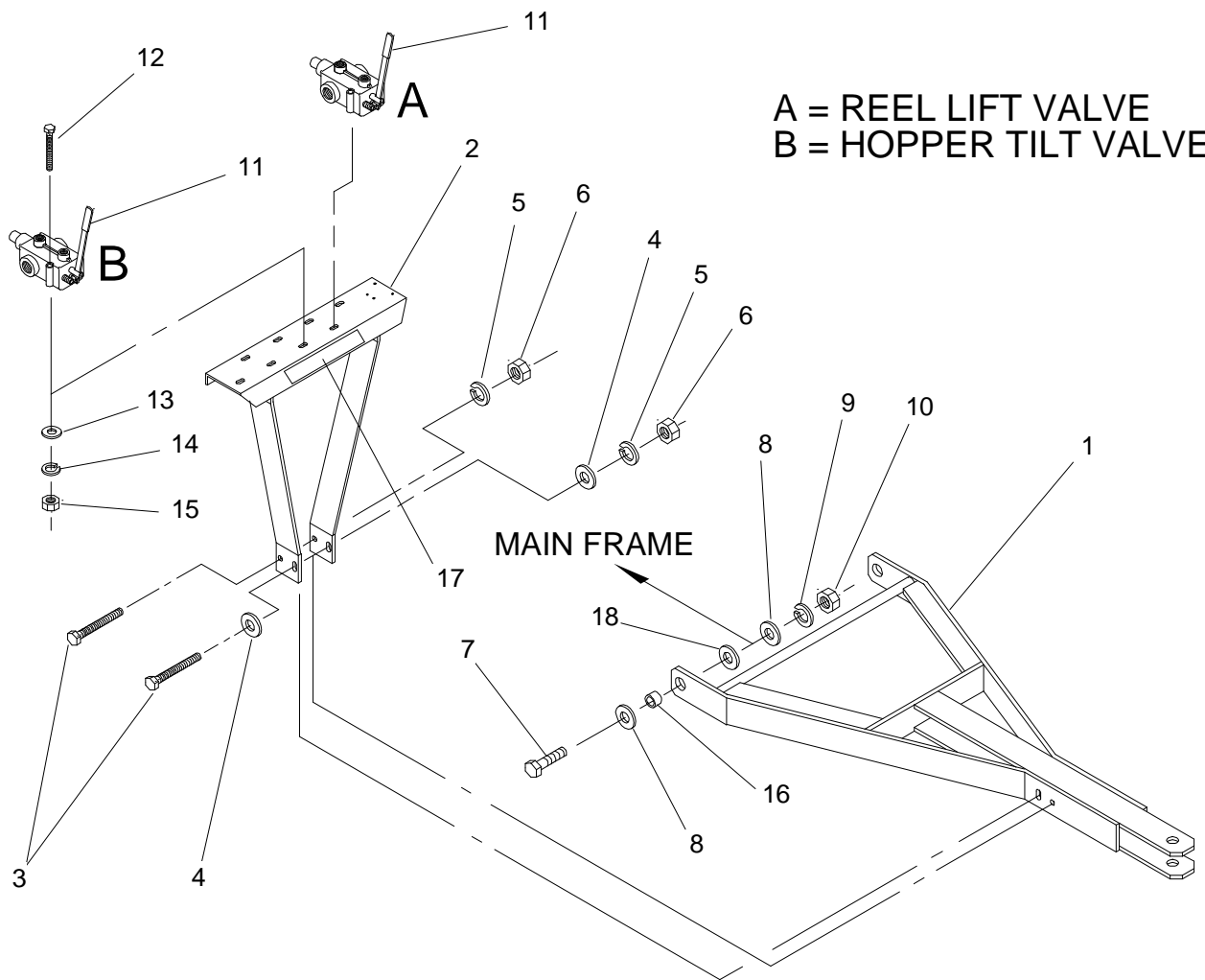
## HOPPER ASSEMBLY

66HL-011

Ref. No.	Part No.	Description	No. Used
1	66-002-0442	Hopper Assembly	1
2	66-002-0042	Hopper Door Assembly	1
3	01-178-0814	Capscrew - Hex Hd., 1/2" - 13 x 1-3/4"	4
4	01-166-0800	Flat Washer, 1/2"	8
5	01-188-0813	Hex Nut, 1/2" - 13	5
6	01-189-0813	Lock Nut, 1/2" - 13	4
7	66-004-1641	Lower Door Arm-L.H.	1
8	01-178-1024	Capscrew - Hex Hd., 5/8" - 11 x 3"	2
9	01-188-1011	Hex Nut, 5/8" - 11	3
10	01-191-1011	Jam Nut, 5/8" - 11	2
11	01-166-1000	Flat Washer, 5/8"	4
12	01-171-0010	Turnbuckle	1
13	01-178-1020	Capscrew - Hex Hd., 5/8" - 11 x 2-1/2"	1
14	01-189-1011	Lock Nut, 5/8" - 11	1

Ref. No.	Part No.	Description	No. Used
15	66-005-0211	Lower Door Arm-R.H.	1
16	66-004-3571	Door Spring	1
17	66-004-4182	Front Rubber Mount	1
18	66-004-4191	Rubber Flap	1
19	01-178-0508	Capscrew - Hex Hd., 5/16" - 18 x 1"	9
20	01-166-0500	Flat Washer, 5/16"	9
21	01-166-0510	Lock Washer, 5/16"	9
22	01-188-0518	Hex Nut, 5/16" - 18	9
23	01-178-0608	Capscrew - Hex Hd., 3/8" - 16 x 1"	4
24	01-166-0600	Flat Washer, 3/8"	8
25	01-166-0610	Lock Washer, 3/8"	4
26	01-188-0616	Hex Nut, 3/8" - 16	4
27	66-004-3361	Rear Door Lift Cable, 186" lg.	1
*	01-170-0010	Cable Clamp	4
28	01-506-0530	Decal - Toro	1

\* Not Illustrated



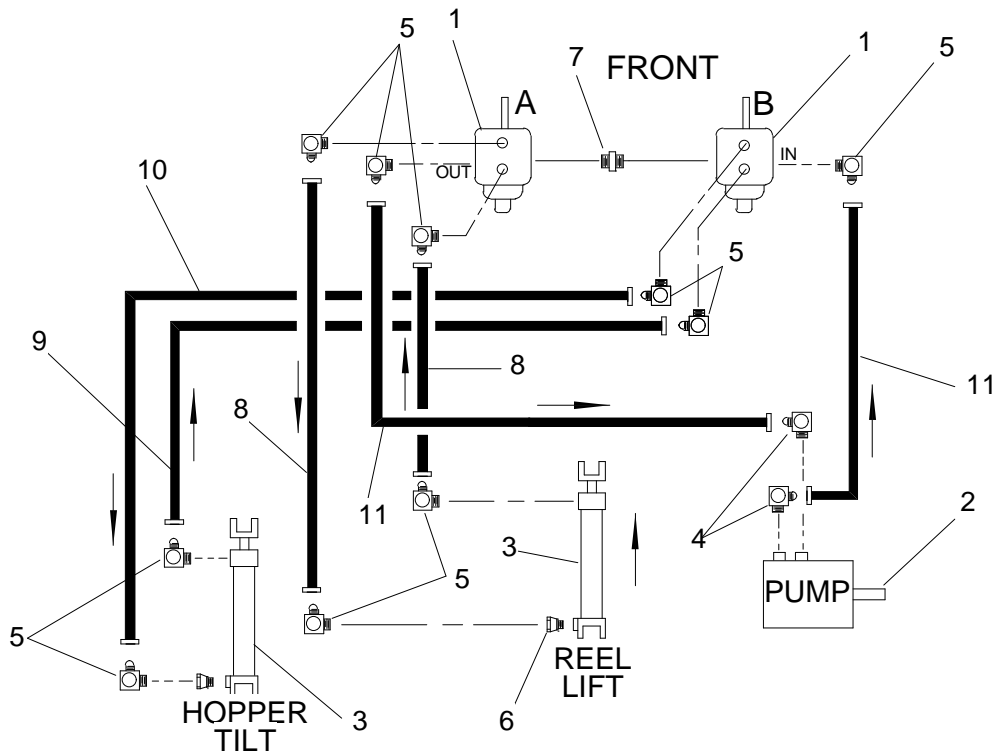
## TONGUE ASSEMBLY

66E-012

Ref. No.	Part No.	Description	No. Used
1	66-005-0311	Tongue	1
2	66-005-0322	Control Base	1
3	01-178-0844	Capscrew - Hex Hd., 1/2" - 13 x 5-1/2"	2
4	01-166-0800	Flat Washer, 1/2"	2
5	01-166-0810	Lock Washer, 1/2"	2
6	01-188-0813	Hex Nut, 1/2" - 13	2
7	01-178-1016	Capscrew - Hex Hd., 5/8" - 11 x 2"	2
8	01-166-1000	Flat Washer, 5/8"	4
9	01-166-1010	Lock Washer, 5/8"	2
10	01-188-1011	Hex Nut, 5/8" - 11	2

Ref. No.	Part No.	Description	No. Used
11	01-308-0050	Valve	2
*	01-308-0130	Seal Kit	1
12	01-178-0520	Capscrew - Hex Hd., 5/16" - 18 x 2-1/2"	4
13	01-166-0500	Flat Washer, 5/16"	4
14	01-166-0510	Lock Washer, 5/16"	4
15	01-188-0518	Hex Nut, 5/16" - 18	4
16	66-004-1401	Tongue Bushing	2
17	01-506-1100	Decal - Hopper Lift/Reel Lift	1
18	01-168-1414	Machinery Bushing, 7/8" x 14 ga.	2

\* Not Illustrated



A = REEL LIFT VALVE  
 B = HOPPER TILT VALVE

## HYDRAULIC SCHEMATIC

66E-013

Ref. No.	Part No.	Description	No. Used
1	01-308-0050	Valve	2
*	01-308-0130	Seal Kit	1
2	01-305-0010	Hydraulic Pump	1
*	01-305-0620	Seal Kit	1
3	01-301-0060	Cylinder, 4" stroke	2
*	01-301-0100	Seal Kit	1
4	01-201-0030	Fitting	2

Ref. No.	Part No.	Description	No. Used
5	01-201-0190	Fitting	10
6	01-310-0010	Flow Restrictor	2
7	01-201-0160	Fitting	1
8	01-312-0190	Hose Assembly, 1/4" x 120"	2
9	01-312-0300	Hose Assembly, 1/4" x 150"	1
10	01-312-0310	Hose Assembly, 1/4" x 140"	1
11	01-312-0320	Hose Assembly, 1/4" x 105"	2

\* Not Illustrated

# PART NUMBER INDEX

Part No.	Description	Pg. No.	Ref. No.	Qty.	Part No.	Description	Pg. No.	Ref. No.	Qty.
01-102-0050	Inner Bearing	3	15	1	01-166-0810	Lock Washer	13	4	16
01-102-0070	Outer Bearing	3	14	1	01-166-0810	Lock Washer	15	5	2
01-102-0130	Bearing	3	8	10	01-166-0810	Lock Washer	6	8	2
01-103-0040	Inner Race	3	12	1	01-166-0810	Lock Washer	7	4	1
01-103-0160	Race	3	7	10	01-166-0820	"SAE" Flat Washer	13	24	8
01-103-0140	Outer Race	3	13	1	01-166-0820	"SAE" Flat Washer	7	3	1
01-105-0520	Needle Bearing	6	26	2	01-166-1000	Flat Washer	11	6	2
01-105-0520	Needle Bearing	7	16	2	01-166-1000	Flat Washer	13	26	4
01-113-0010	Bearing	10	9	1	01-166-1000	Flat Washer	14	11	4
01-113-0010	Bearing	4	21	1	01-166-1000	Flat Washer	15	8	4
01-113-0010	Bearing	5	21	1	01-166-1010	Lock Washer	11	8	1
01-113-0010	Bearing	6	15	1	01-166-1010	Lock Washer	13	27	2
01-113-0020	Bearing	10	4	1	01-166-1010	Lock Washer	15	9	2
01-113-0020	Bearing	6	5	1	01-166-1010	Lock Washer	8	4	1
01-125-0030	Bronze Bushing	13	11	5	01-166-1010	Lock Washer	9	5	1
01-151-0020	Cotter Pin	6	28	1	01-166-1020	"SAE" Flat Washer	9	4	1
01-151-0060	Cotter Pin	13	8	4	01-166-1020	"SAE" Flat Washer	8	3	1
01-151-0060	Cotter Pin	2	17	2	01-166-1200	Flat Washer	13	20	10
01-151-0060	Cotter Pin	3	5	7	01-166-1220	"SAE" Flat Washer	3	17	1
01-151-0060	Cotter Pin	6	14	2	01-166-1600	Flat Washer	13	9	9
01-151-0060	Cotter Pin	7	17	1	01-168-1014	Machinery Bushing	11	2	5
01-151-0100	Cotter Pin	11	3	1	01-168-1210	Machinery Bushing	3	3	2
01-161-0030	Pop Rivet	7	23	2	01-168-1410	Machinery Bushing	6	23	6
01-163-0030	Set Screw	4	24	4	01-168-1410	Machinery Bushing	7	13	11
01-163-0030	Set Screw	5	24	4	01-168-1414	Machinery Bushing	15	18	2
01-166-0500	Flat Washer	14	20	9	01-168-1414	Machinery Bushing	6	24	4
01-166-0500	Flat Washer	15	13	4	01-168-1414	Machinery Bushing	7	14	5
01-166-0500	Flat Washer	4	5	8	01-168-1610	Machinery Bushing	2	22	4
01-166-0510	Lock Washer	14	21	9	01-168-1610	Machinery Bushing	6	20	3
01-166-0510	Lock Washer	15	14	4	01-168-1614	Machinery Bushing	2	18	8
01-166-0510	Lock Washer	4	6	4	01-168-1614	Machinery Bushing	6	21	6
01-166-0600	Flat Washer	10	11	2	01-168-2010	Machinery Bushing	6	13	2
01-166-0600	Flat Washer	11	14	3	01-168-2014	Machinery Bushing	6	10	3
01-166-0600	Flat Washer	12	3	7	01-170-0010	Cable Clamp	14	*	4
01-166-0600	Flat Washer	14	24	8	01-171-0010	Turnbuckle	14	12	1
01-166-0600	Flat Washer	2	10	10	01-178-0508	Capscrew - Hex Hd.	14	19	9
01-166-0600	Flat Washer	4	18	22	01-178-0512	Capscrew - Hex Hd.	4	4	4
01-166-0600	Flat Washer	5	5	30	01-178-0520	Capscrew - Hex Hd.	15	12	4
01-166-0600	Flat Washer	6	17	1	01-178-0608	Capscrew - Hex Hd.	12	2	1
01-166-0600	Flat Washer	7	11	3	01-178-0608	Capscrew - Hex Hd.	13	14	6
01-166-0610	Lock Washer	10	12	2	01-178-0608	Capscrew - Hex Hd.	14	23	4
01-166-0610	Lock Washer	12	4	1	01-178-0608	Capscrew - Hex Hd.	2	6	4
01-166-0610	Lock Washer	13	15	6	01-178-0608	Capscrew - Hex Hd.	4	17	6
01-166-0610	Lock Washer	14	25	4	01-178-0608	Capscrew - Hex Hd.	5	17	6
01-166-0610	Lock Washer	2	7	10	01-178-0610	Capscrew - Hex Hd.	2	25	4
01-166-0610	Lock Washer	4	19	8	01-178-0612	Capscrew - Hex Hd.	10	10	2
01-166-0610	Lock Washer	5	6	12	01-178-0612	Capscrew - Hex Hd.	5	4	4
01-166-0610	Lock Washer	6	18	1	01-178-0612	Capscrew - Hex Hd.	6	16	1
01-166-0700	Flat Washer	12	9	4	01-178-0614	Capscrew - Hex Hd.	4	13	1
01-166-0700	Flat Washer	7	19	3	01-178-0614	Capscrew - Hex Hd.	5	13	1
01-166-0800	Flat Washer	10	6	2	01-178-0616	Capscrew - Hex Hd.	4	23	2
01-166-0800	Flat Washer	11	18	2	01-178-0616	Capscrew - Hex Hd.	5	23	2
01-166-0800	Flat Washer	13	3	24	01-178-0810	Capscrew - Hex Hd.	7	5	1
01-166-0800	Flat Washer	14	4	8	01-178-0812	Capscrew - Hex Hd.	13	29	16
01-166-0800	Flat Washer	15	4	2	01-178-0814	Capscrew - Hex Hd.	10	5	2
01-166-0800	Flat Washer	6	7	2	01-178-0814	Capscrew - Hex Hd.	14	3	4
01-166-0800	Flat Washer	8	10	6	01-178-0814	Capscrew - Hex Hd.	6	6	2
01-166-0800	Flat Washer	9	10	6	01-178-0844	Capscrew - Hex Hd.	15	3	2
01-166-0810	Lock Washer	10	7	2	01-178-1016	Capscrew - Hex Hd.	13	25	2

\* Not Illustrated

# PART NUMBER INDEX (Continued)

Part No.	Description	Pg. No.	Ref. No.	Qty.	Part No.	Description	Pg. No.	Ref. No.	Qty.
01-178-1016	Capscrew - Hex Hd.	15	7	2	01-260-0020	Sheave	4	14	1
01-178-1016	Capscrew - Hex Hd.	8	6	1	01-260-0020	Sheave	5	14	1
01-178-1016	Capscrew - Hex Hd.	9	2	1	01-260-0030	Sheave	10	17	1
01-178-1020	Capscrew - Hex Hd.	14	13	1	01-260-0040	Sheave	4	9	1
01-178-1024	Capscrew - Hex Hd.	14	8	2	01-260-0040	Sheave	5	9	1
01-178-1028	Capscrew - Hex Hd.	11	4	1	01-260-0190	Bushing	4	10	1
01-178-1228	Capscrew - Hex Hd.	13	17	2	01-260-0190	Bushing	5	10	1
01-178-1236	Capscrew - Hex Hd.	13	22	2	01-260-0230	Bushing	4	15	1
01-182-0614	Capscrew - Hex Hd.	12	12	1	01-260-0230	Bushing	5	15	1
01-182-0624	Capscrew - Hex Hd.	4	26	2	01-260-0280	Bushing	10	18	1
01-182-0624	Capscrew - Hex Hd.	5	26	2	01-260-0290	Bushing	10	15	1
01-182-0832	Capscrew - Hex Hd.	11	16	1	01-261-0300	Spring	11	15	1
01-188-0518	Hex Nut	14	22	9	01-261-0300	Spring	7	12	1
01-188-0518	Hex Nut	15	15	4	01-262-0520	Sprocket	6	11	1
01-188-0518	Hex Nut	4	7	4	01-262-0530	Sprocket	6	22	1
01-188-0616	Hex Nut	10	13	2	01-262-0610	Sprocket	6	25	1
01-188-0616	Hex Nut	11	12	4	01-262-0610	Sprocket	7	15	1
01-188-0616	Hex Nut	12	5	6	01-263-0010	U-joint	4	3	1
01-188-0616	Hex Nut	13	16	6	01-263-0050	U-joint	5	3	1
01-188-0616	Hex Nut	14	26	4	01-264-0010	Belt	10	20	1
01-188-0616	Hex Nut	2	8	8	01-264-0190	Belt	5	12	1
01-188-0616	Hex Nut	4	20	14	01-264-0190	Belt	4	12	1
01-188-0616	Hex Nut	5	7	18	01-268-0010	Pulley	11	7	1
01-188-0616	Hex Nut	6	19	1	01-268-0040	Cable Pulley	13	23	1
01-188-0616	Hex Nut	7	9	4	01-268-0050	Cable Pulley	13	10	4
01-188-0714	Hex Nut	12	8	6	01-269-0060	Wheel Spacer	3	10	10
01-188-0813	Hex Nut	10	8	2	01-269-0140	Steering Hub	3	11	1
01-188-0813	Hex Nut	11	17	3	01-269-0300	Lug Nut	3	19	5
01-188-0813	Hex Nut	13	5	16	01-269-0320	Tire	3	6	5
01-188-0813	Hex Nut	14	5	5	01-269-0340	Wheel	3	21	5
01-188-0813	Hex Nut	15	6	2	01-270-1370	Engine	5	2	1
01-188-0813	Hex Nut	6	9	2	01-270-1430	Governor Control	5	*	1
01-188-1011	Hex Nut	11	9	1	01-270-1640	Engine	4	2	1
01-188-1011	Hex Nut	13	28	2	01-273-0140	Gaskets	5	*	2
01-188-1011	Hex Nut	14	9	3	01-273-0240	Muffler w/clamps	5	*	1
01-188-1011	Hex Nut	15	10	2	01-273-0250	Tube Kit w/gaskets	5	*	1
01-188-1011	Hex Nut	8	8	2	01-279-0010	Rubber Fingers	6	3	140
01-188-1011	Hex Nut	9	8	2	01-280-0010	Gas Tank	2	2	1
01-189-0616	Lock Nut	11	11	1	01-280-0090	Fuel Shut-off	2	*	1
01-189-0714	Lock Nut	7	20	3	01-286-0040	Dust Cap	3	20	1
01-189-0813	Lock Nut	14	6	4	01-301-0060	Cylinder	13	6	1
01-189-0813	Lock Nut	8	11	2	01-301-0060	Cylinder	16	3	2
01-189-0813	Lock Nut	9	11	2	01-301-0060	Cylinder	2	15	1
01-189-1011	Lock Nut	14	14	1	01-301-0100	Seal Kit	13	*	1
01-190-1210	Castle Nut	3	4	5	01-301-0100	Seal Kit	16	*	1
01-190-1216	Castle Nut	3	18	1	01-301-0100	Seal Kit	2	*	1
01-191-0624	Jam Nut	7	7	3	01-305-0010	Hydraulic Pump	16	2	1
01-191-1011	Jam Nut	14	10	2	01-305-0010	Pump	4	1	1
01-191-1011	Jam Nut	8	5	1	01-305-0010	Pump	5	1	1
01-191-1011	Jam Nut	9	6	1	01-305-0620	Seal Kit	16	*	1
01-191-1210	Jam Nut	13	18	8	01-305-0620	Seal Kit	4	*	1
01-192-0070	Wing Nut	2	11	2	01-305-0620	Seal Kit	5	*	1
01-201-0030	Fitting	16	4	2	01-308-0050	Valve	15	11	2
01-201-0160	Fitting	16	7	1	01-308-0050	Valve	16	1	2
01-201-0190	Fitting	16	5	10	01-308-0130	Seal Kit	15	*	1
01-201-0540	Hydraulic Fitting	2	*	1	01-308-0130	Seal Kit	16	*	1
01-202-0030	Hose Clamps	4	*	2	01-310-0010	Flow Restrictor	16	6	2
01-202-0030	Hose Clamps	5	*	2	01-312-0190	Hose Assembly	16	8	2
01-250-0020	Rod End Bearing	7	8	1	01-312-0300	Hose Assembly	16	9	1
01-251-0020	Offset Link	6	*	1	01-312-0310	Hose Assembly	16	10	1
01-260-0010	Sheave	10	14	1	01-312-0320	Hose Assembly	16	11	2

\* Not Illustrated

# PART NUMBER INDEX (Continued)

Part No.	Description	Pg. No.	Ref. No.	Qty.	Part No.	Description	Pg. No.	Ref. No.	Qty.
01-405-0370	Seal	3	16	1	48-005-0421	Axle Bolt Assembly	3	2	5
01-405-0460	Oil Seal	3	9	10	48-005-0591	Reel Lift Tube Assembly	8	9	1
01-451-0020	Pipe Plug	4	29	1	48-005-0591	Reel Lift Tube Assembly	9	9	1
01-451-0020	Pipe Plug	5	29	1	48-005-0611	Idler Arm	11	1	1
01-453-0130	Pipe Coupling	4	28	1	54-004-0941	Reel Chain	6	27	1
01-453-0130	Pipe Coupling	5	28	1	65-005-0281	Dump Cylinder Pivot Ass'y	13	13	1
01-456-0040	Pipe Nipple	4	27	1	66-002-0042	Hopper Door Assembly	14	2	1
01-456-0110	Pipe Nipple	5	27	1	66-002-0061	Throttle Assembly	4	*	1
01-506-0030	Decal - Danger	4	31	1	66-002-0442	Hopper Assembly	14	1	1
01-506-0030	Decal - Danger	5	18	1	66-002-4201	Throttle Assembly	5	*	1
01-506-0040	Decal - Danger	12	10	1	66-004-1401	Tongue Bushing	15	16	2
01-506-0050	Decal - Danger	7	21	1	66-004-1621	Air Deflector	2	24	1
01-506-0070	Decal - Danger	2	23	1	66-004-1641	Lower Door Arm-L.H.	14	7	1
01-506-0080	Decal - Danger	12	11	1	66-004-1951	Jack Shaft	4	8	1
01-506-0080	Decal - Danger	2	12	1	66-004-1951	Jack Shaft	5	8	1
01-506-0150	Decal - Height Gauge	2	13	1	66-004-2141	Hopper Pivot Arm Bushing	13	19	4
01-506-0460	Decal - Gas	2	19	1	66-004-2171	Cylinder Pin	2	16	1
01-506-0520	Decal - Toro	2	20	1	66-004-2181	Cylinder Pin	13	12	1
01-506-0530	Decal - Toro	14	28	1	66-004-2391	Gas Tank Mounting Strap	2	5	2
01-506-0560	Decal - Hydraulic Oil	4	30	1	66-004-2841	Battery Box Lid	2	9	1
01-506-0560	Decal - Hydraulic Oil	5	30	1	66-004-3041	Shaft Guard	4	32	1
01-506-0760	Decal - Turf Sweeper 1655	2	14	2	66-004-3041	Shaft Guard	5	19	1
01-506-1100	Decal - Hopper Lift/Reel Lift	15	17	1	66-004-3051	Shaft Guard Bracket	4	33	1
01-506-1150	Decal - Danger	2	21	1	66-004-3051	Shaft Guard Bracket	5	20	1
01-600-0030	Battery Cable	5	*	1	66-004-3211	Key - Sq.	10	16	1
01-600-0050	Battery Cable	4	*	1	66-004-3341	Gas Tank Rubber Mount	2	3	2
01-600-0050	Battery Cable	5	*	1	66-004-3351	Gas Tank Rubber Mount	2	4	2
01-600-0060	Battery Cable	4	*	1	66-004-3361	Rear Door Lift Cable	14	27	1
01-650-0400	All Thread	12	7	2	66-004-3561	Gas Line	4	*	1
02-250-0020	Rod End Bearing	7	6	1	66-004-3561	Gas Line	5	*	1
41-002-0061	Dipstick	4	22	1	66-004-3571	Door Spring	14	16	1
41-002-0061	Dipstick	5	22	1	66-004-4141	Cylinder Pin	13	7	1
48-002-5441	Idler Sprocket Assembly	6	*	1	66-004-4182	Front Rubber Mount	14	17	1
48-002-5441	Idler Sprocket Assembly	7	*	1	66-004-4191	Rubber Flap	14	18	1
48-004-1211	Belt Slip Pin	12	6	2	66-005-0201	Reel Lift Rod Assembly-L.H.	8	7	1
48-004-1711	Idler Spring Rod	11	13	1	66-005-0201	Reel Lift Rod Assembly-R.H.	9	7	1
48-004-1931	Key - Sq.	4	11	1	66-005-0211	Lower Door Arm-R.H.	14	15	1
48-004-1931	Key - Sq.	5	11	1	66-005-0231	Front Reel Assembly	10	2	1
48-004-1931	Key - Sq.	6	12	2	66-005-0231	Front Reel Assembly	6	2	1
48-004-3431	Hose Bracket	4	25	1	66-005-0242	Rear Reel Assembly	10	1	1
48-004-3431	Hose Bracket	5	25	1	66-005-0242	Rear Reel Assembly	6	1	1
48-004-3471	Spacer	11	5	1	66-005-0251	Upper Arm Assembly	13	21	2
48-004-3881	Spacer	7	2	1	66-005-0302	Belt Guard	12	1	1
48-004-3891	Idler Spring Rod	7	10	1	66-005-0311	Tongue	15	1	1
48-004-5841	Reel Plate Spacer	8	2	1	66-005-0322	Control Base	15	2	1
48-004-5841	Reel Plate Spacer	9	3	1	66-005-0342	Lower Pivot Pipe Assembly	13	2	1
48-005-0121	Spring Tension Adj.	11	10	1	66-005-0371	Reel Height Indicator	7	22	1
48-005-0162	Idler Cover	7	18	1	66-005-0414	Main Frame	2	1	1
48-005-0172	Reel Plate Assembly-R.H.	10	3	1	66-005-3481	Yoke Assembly	3	1	1
48-005-0172	Reel Plate Assembly-R.H.	9	1	1	66-005-3501	Dump Arm Assembly	13	1	1
48-005-0182	Reel Plate Assembly-L.H.	8	1	1	82-004-1171	Key - Sq.	10	19	1
48-005-0182	Reel Plate Assembly, L.H.	6	4	1	84-004-2851	Key - Sq.	4	16	1
48-005-0191	Idler Shaft Assembly	7	1	1	84-004-2851	Key - Sq.	5	16	1

\* Not Illustrated

## PRODUCT CHANGES

In an effort to make improvements available to TORO owners as quickly as possible minor changes are incorporated into Toro's products from time to time that do not become immediately shown in the Parts Catalog. If such a change has been made in your unit which is not reflected in your manual see your TORO Distributor or an Authorized Service Dealer for information and part numbers.

## IDENTIFICATION & ORDERING

### MODEL AND NUMBERS

The Turf Sweeper 1655 has two identification numbers; a model number and a serial number. The two numbers are stamped on a plate which is located on the control base. In any correspondence concerning the 1655 supply model and serial numbers to assure that correct information and

replacement parts are obtained.

To order replacement parts from your TORO Distributor or an Authorized Service Dealer, supply the following information:

1. Model and serial number of the 1655.
2. Part number description and the quantity of part (s) desired.

## TABLE OF CONTENTS

Description	Page	Description
Main Frame Assembly . . . . .	2	Belt Drive Assembly . . . . . 10
Wheel Assembly . . . . .	3	Belt Idler Assembly . . . . . 11
B & S Engine & Pump Mounting . . . . .	4	Belt Guard & Belt Slip Pins . . . . . 12
Onan Engine & Pump Mounting . . . . .	5	Dump Arm Assembly . . . . . 13
Sweeper Reel & Timing Chain Assembly . . . . .	6	Hopper Assembly . . . . . 14
Chain Idler & Guard Assembly . . . . .	7	Tongue Assembly . . . . . 15
Reel Lift Assembly - L.H. . . . .	8	Hydraulic Schematic . . . . . 16
Reel Lift Assembly - R.H. . . . .	9	Part Number Index . . . . . 17 - 19