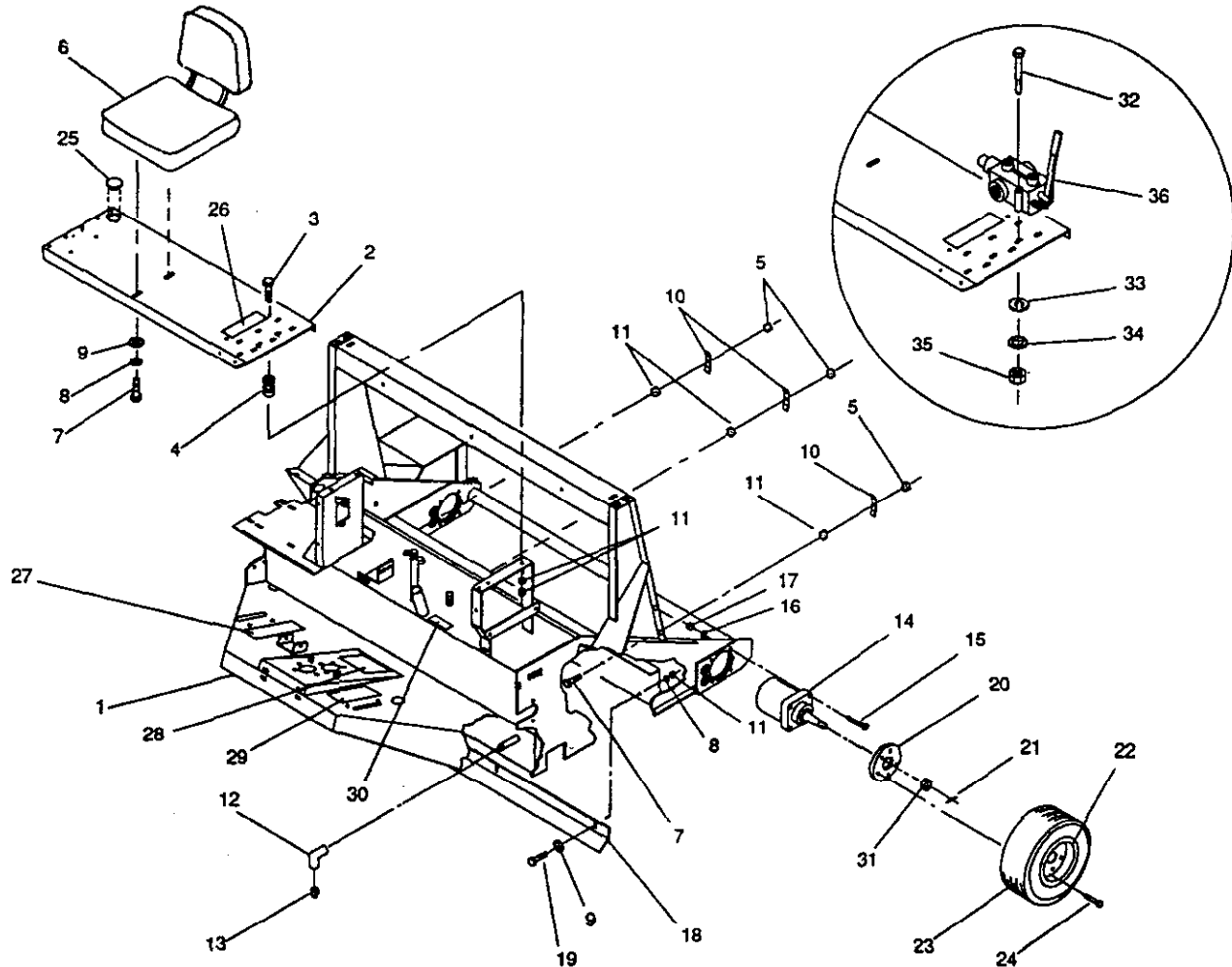


**TORO**

MODEL NO. 44020 - 20101 &amp; UP

**PARTS  
CATALOG****TURF SWEEPER 5400HL****MAIN FRAME ASSEMBLY**

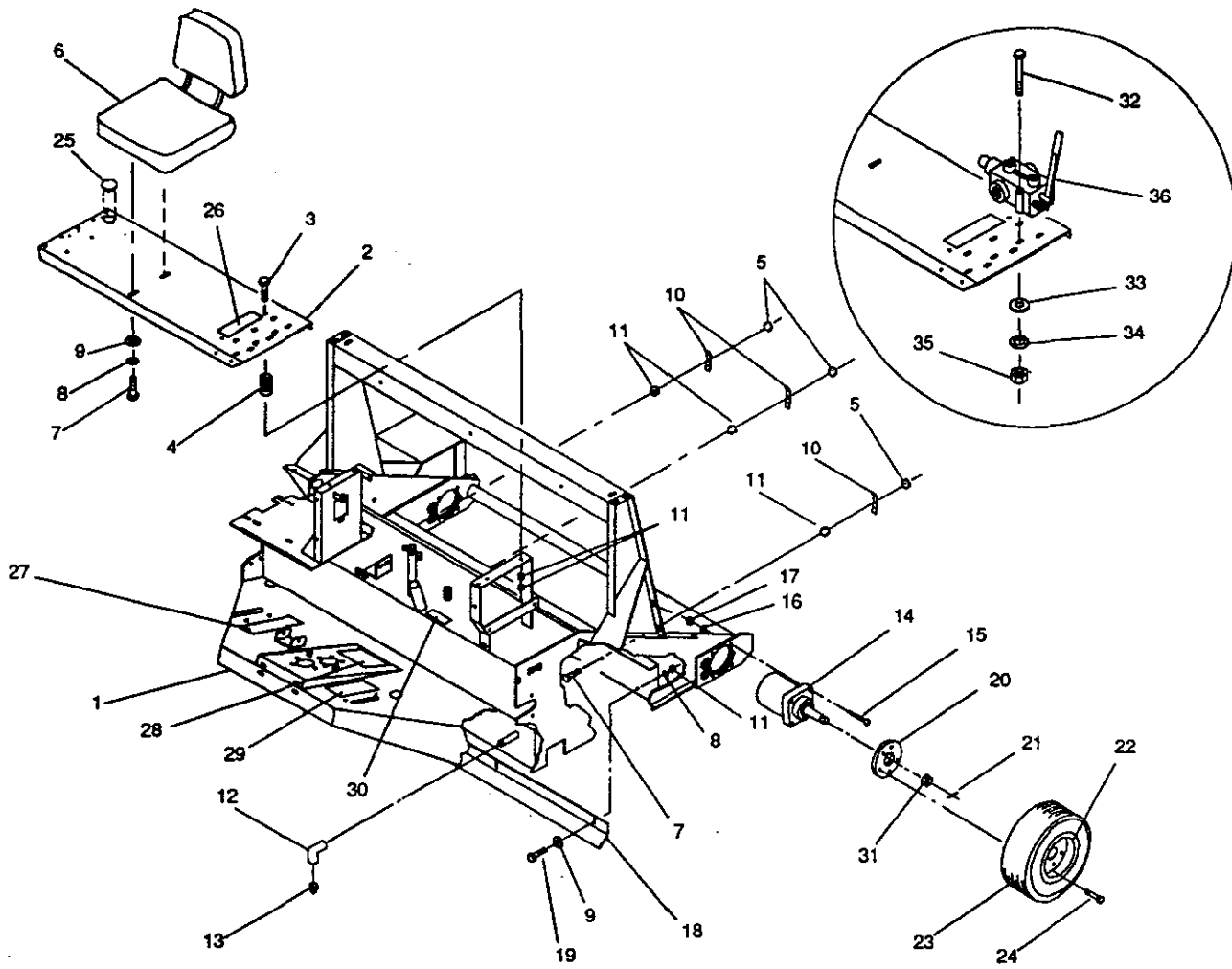
54-001

Ref. No.	Part No.	Description	No. Used
1	54-005-0214	Main Frame	1
2	54-005-0231	Seat Bracket	1
3	323-10	Capscrew - Hex Hd.	4
4	01-261-0240	Spring	4
5	3296-39	Lock Nut	3
6	01-286-0220	Seat	1
7	01-182-0616	Capscrew - Hex Hd.	5
8	3253-5	Lock Washer	6
9	3256-4	Flat Washer	6
10	48-004-3431	Hose Hold Down Bracket	3
11	3217-7	Hex Nut	15
12	01-455-0100	Elbow	1
13	01-451-0010	Pipe Plug	1

Ref. No.	Part No.	Description	No. Used
14	01-304-0410	Hydraulic Motor (Incl. Ref. #31)	2
*	01-304-0260	Seal Kit	1
15	325-12	Capscrew - Hex Hd.	8
16	3253-7	Lock Washer	8
17	3217-9	Hex Nut	8
18	66-004-1621	Air Deflector	1
19	323-6	Capscrew - Hex Hd.	4
20	01-269-1000	Hub	2
21	01-151-0170	Cotter Pin	2
22	01-269-1020	Wheel	2
23	01-269-0330	Tire	2
24	01-158-1610	Lug Bolt	10
25	01-288-0020	Hour Meter	1

\* Not Illustrated

© The TORO Company - 1994  
All Rights Reserved



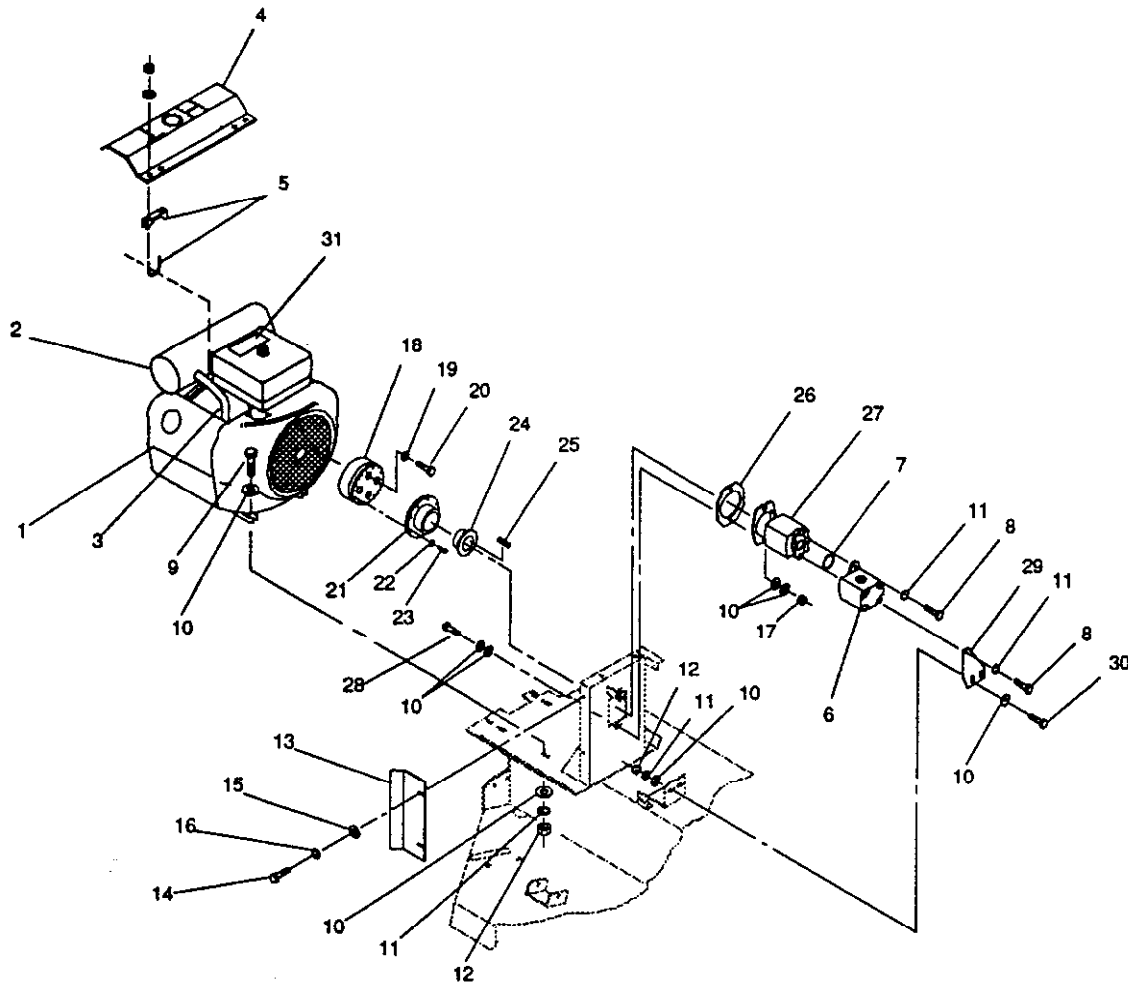
## MAIN FRAME ASSEMBLY (Continued)

54-001

Ref. No.	Part No.	Description	No. Used
26	01-506-0170	Decal - Hopper Door/ Lift	1
27	01-506-0570	Decal - Traction Pedal	1
28	01-506-0090	Decal - Danger	1
29	01-506-0980	Decal - Parking Brake	1
30	01-506-0560	Decal - Hydraulic Oil	1
31	01-190-1620	Castle Nut (Incl. w/Ref. #14)	2

Ref. No.	Part No.	Description	No. Used
32	322-12	Capscrew - Hex Hd.	4
33	3256-3	Flat Washer	4
34	3253-4	Lock Washer	4
35	3217-6	Hex Nut	4
36	01-308-0050	Valve	2
*	01-308-0130	Seal Kit	1

\* Not Illustrated



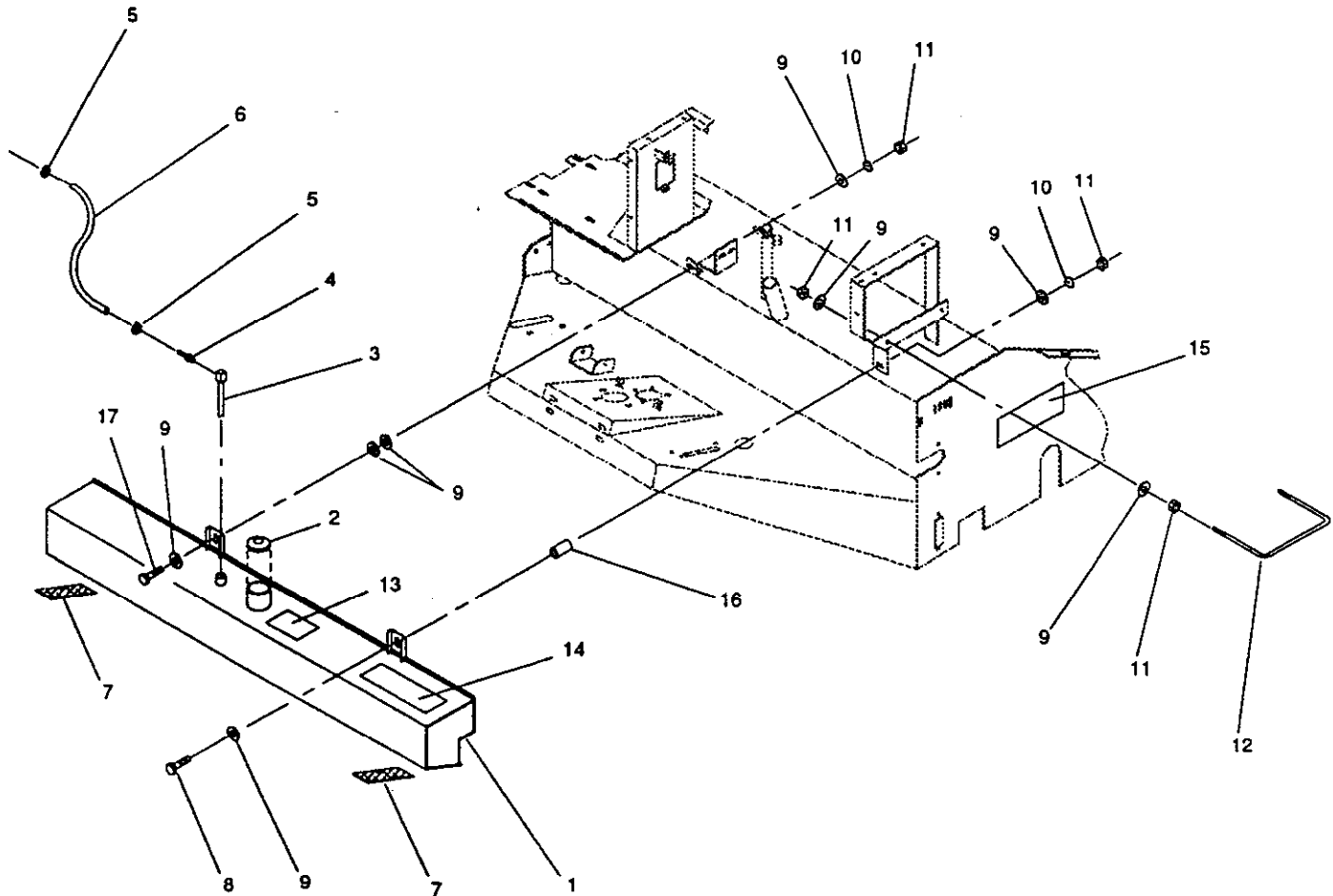
## ENGINE MOUNTING

54-005

Ref. No.	Part No.	Description	No. Used
1	01-270-2260	Engine	1
*	01-600-0050	Battery Cable (neg.)	1
*	01-600-0190	Battery Cable (pos.)	1
2	01-273-0260	Muffler	1
3	01-273-0280	Muffler Tube-long	1
*	01-273-0270	Muffler Tube-short	1
4	54-004-1401	Muffler Guard	1
5	01-170-0150	Clamp	2
6	01-305-0020	Sundstrand Pump	1
*	01-305-0600	Seal Kit	1
7	01-402-0230	O-Ring	1
8	323-7	Capscrew - Hex Hd.	2
9	323-8	Capscrew - Hex Hd.	4
10	3256-4	Flat Washer	20
11	3253-5	Lock Washer	8
12	3217-7	Hex Nut	6
13	48-004-6391	Flywheel Guard	1
14	321-6	Capscrew - Hex Hd.	2
15	3256-2	Flat Washer	2

Ref. No.	Part No.	Description	No. Used
16	3253-3	Lock Washer	2
17	3296-39	Lock Nut	2
18	48-004-5062	Engine Adaptor	1
19	3253-4	Lock Washer	4
20	322-6	Capscrew - Hex Hd.	4
21	01-265-0180	Flex Coupling	1
22	01-169-0010	Lock Washer	8
23	01-158-0150	Capscrew - Socket Hd.	8
24	01-260-0900	"H" Bushing	1
25	48-004-5071	Key	1
26	48-004-5521	Cessna Pump Spacer	1
27	01-305-0090	Cessna Pump	1
*	48-005-0641	Tow Valve Handle	1
*	01-163-0100	Set Screw	1
*	01-305-0080	Seal Kit	1
28	323-10	Capscrew - Hex Hd.	2
29	54-004-1111	Pump Support	1
30	323-6	Capscrew - Hex Hd.	2
31	01-506-0030	Decal - Danger	1

\* Not Illustrated

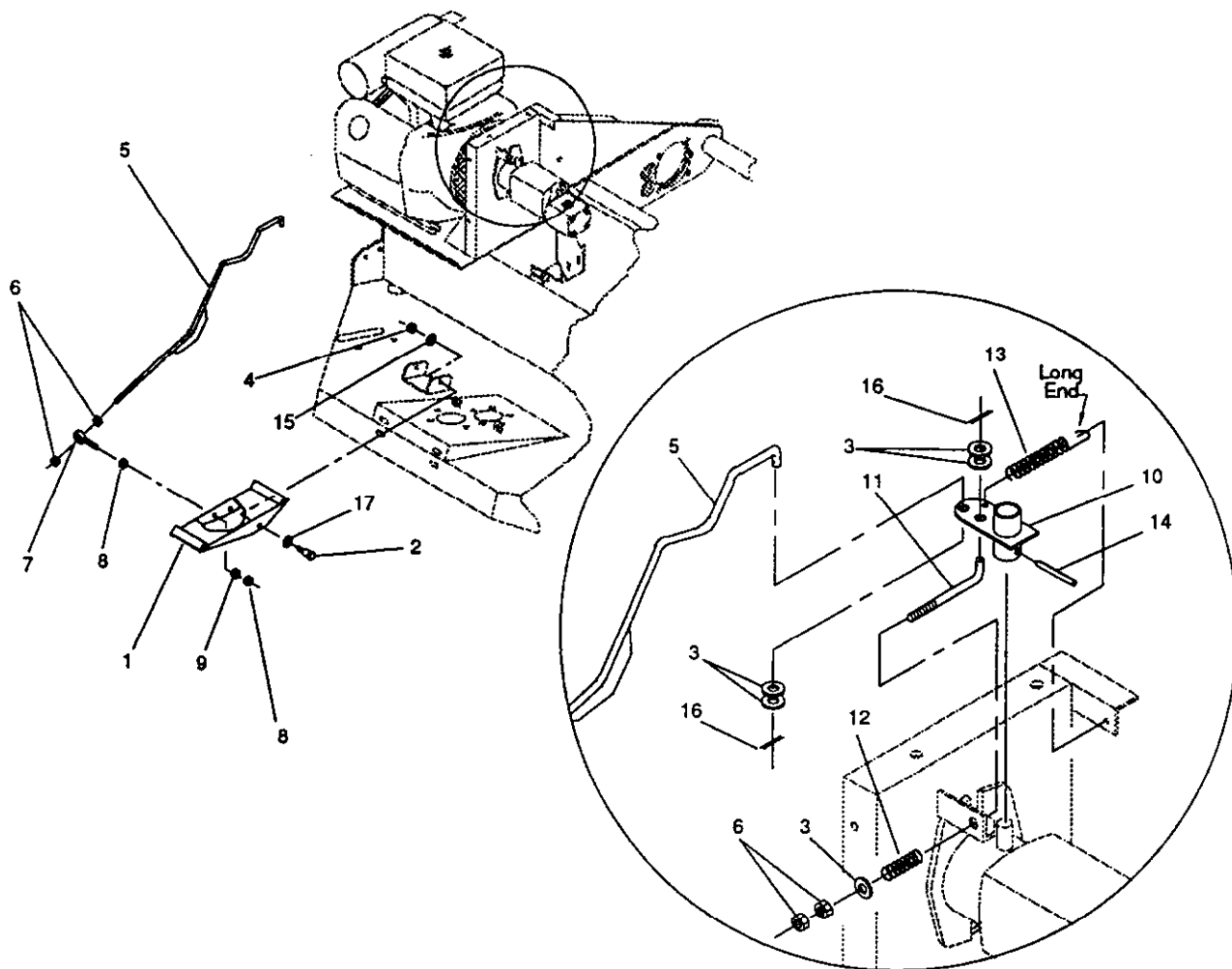


## GAS TANK & BATTERY HOLD DOWN

64-007

Ref. No.	Part No.	Description	No. Used
1	48-005-0712	Gas Tank	1
2	01-280-0020	Gas Cap - Type A - Vented	1
3	01-280-0190	Tank Withdrawal Assembly	1
4	01-217-0060	Hose Barb	1
5	01-202-0030	Hose Clamp	2
6	48-004-4111	Fuel Line	1
7	48-004-5131	PVK80 Rubber	2
8	323-10	Capscrew - Hex Hd.	1
9	3256-4	Flat Washer	12(var)

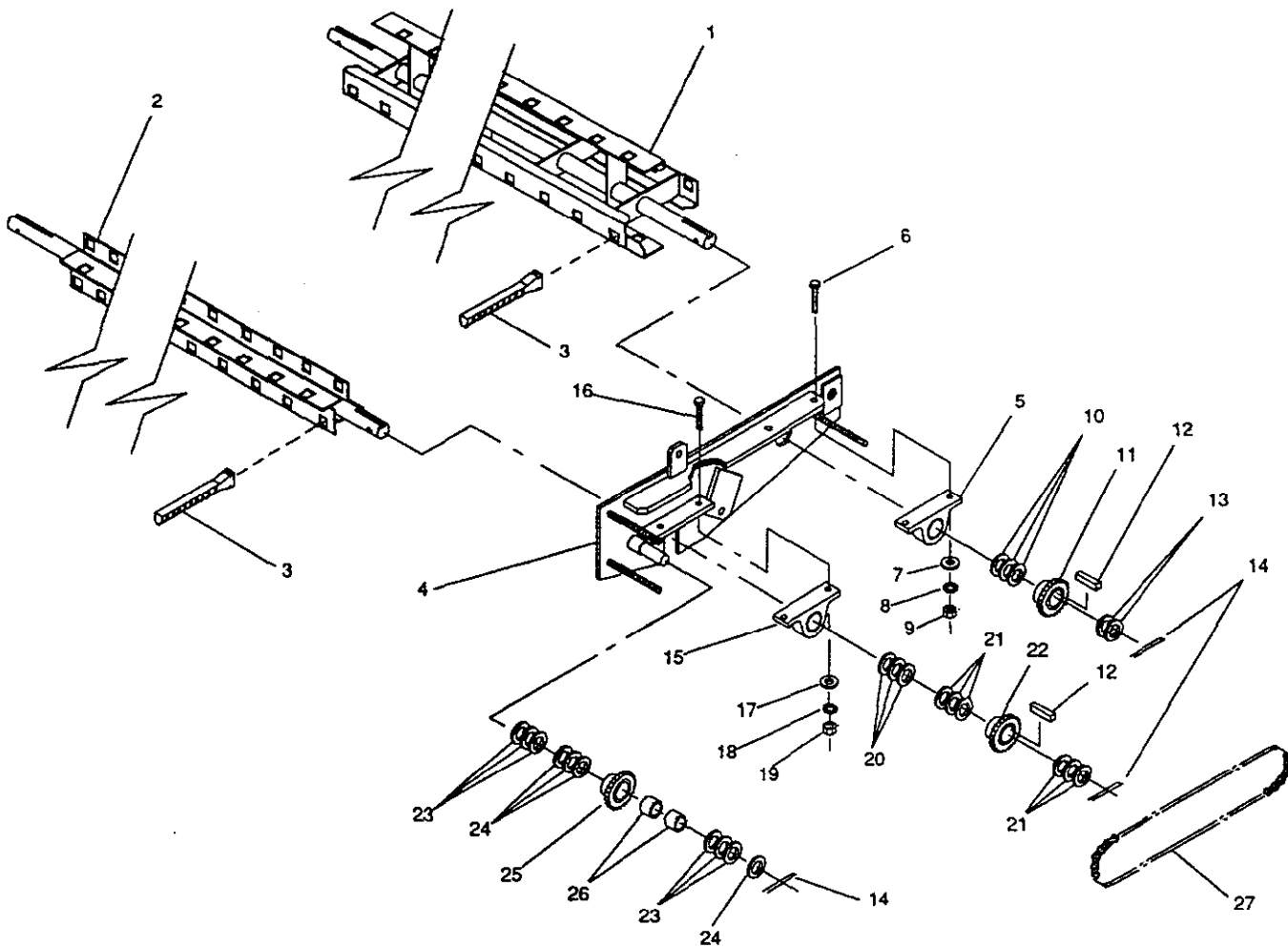
Ref. No.	Part No.	Description	No. Used
10	3253-5	Lock Washer	2
11	3217-7	Hex Nut	6
12	48-004-3831	Battery Hold Down	1
13	01-506-0460	Decal - Gas Only	1
14	01-506-0540	Decal - No Riders	1
15	01-506-0080	Decal - Danger	2
16	48-004-3191	Spacer	1
17	323-7	Capscrew - Hex Hd.	1



## FOOT PEDAL & PUMP CONTROL ROD ASSEMBLY 54-003

Ref. No.	Part No.	Description	No. Used
1	48-005-0621	Foot Pedal	1
2	01-158-0270	Shoulder Bolt	2
3	3256-4	Flat Washer	5
4	01-189-0518	Lock Nut	2
5	54-005-1621	Control Rod	1
6	3217-7	Hex Nut	4
7	01-250-0020	Rod End Bearing	1
8	3220-3	Jam Nut	2
9	3219-3	Hex Nut	1

Ref. No.	Part No.	Description	No. Used
10	48-005-0241	Pump Control Arm Assembly	1
11	48-004-2601	Spring Rod	1
12	01-261-0330	Spring	1
13	01-261-0780	Spring	1
14	32121-12	Roll Pin	1
15	3256-2	Flat Washer	2
16	3272-11	Cotter Pin	2
17	3256-3	Flat Washer	2



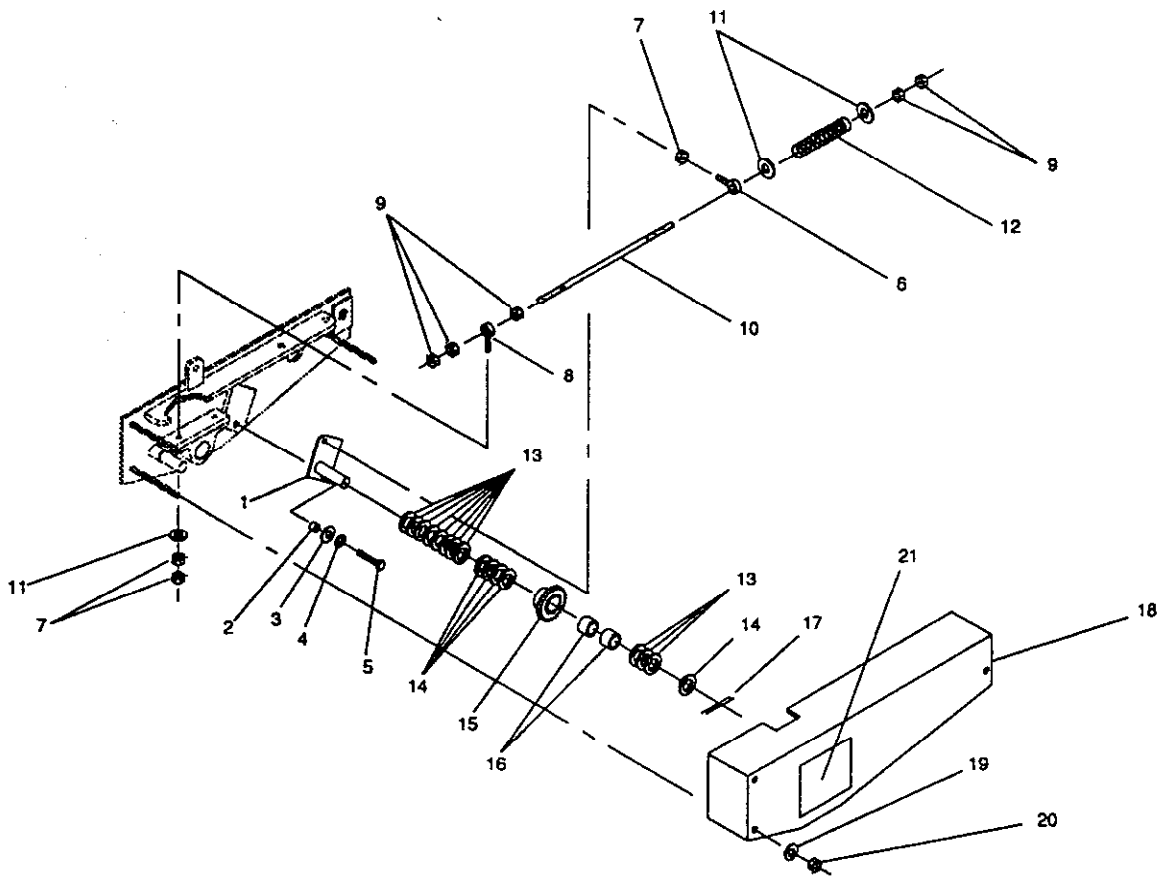
## SWEEPER REEL & TIMING CHAIN ASSEMBLY

54-008

Ref. No.	Part No.	Description	No. Used
1	66-005-0242	Rear Reel Assembly	1
2	66-005-0231	Front Reel Assembly	1
3	01-279-0010	Rubber Fingers	140
4	48-005-0182	Reel Plate Assembly- L.H.	1
5	01-113-0020	Bearing	1
6	325-7	Capscrew - Hex Hd.	2
7	3256-6	Flat Washer	2
8	3253-7	Lock Washer	2
9	3217-9	Hex Nut	2
10	01-168-2014	Machinery Bushing	3(var)
11	01-262-0520	Sprocket	1
12	48-004-1931	Key	2
13	01-168-2010	Machinery Bushing	2
14	3272-23	Cotter Pin	3
15	01-113-0010	Bearing	1

Ref. No.	Part No.	Description	No. Used
16	323-8	Capscrew - Hex Hd.	1
17	3256-4	Flat Washer	1
18	3253-5	Lock Washer	1
19	3217-7	Hex Nut	1
20	01-168-1610	Machinery Bushing	3(var)
21	01-168-1614	Machinery Bushing	6(var)
22	01-262-0530	Sprocket	1
23	01-168-1410	Machinery Bushing	6(var)
24	01-168-1414	Machinery Bushing	4(var)
25	01-262-0610	Sprocket	1
26	01-105-0520	Needle Bearing	2
*	48-002-5441	Idler Sprocket Assembly (Incl. Ref. #25, 26)	1
27	54-004-0941	Reel Chain, #50	1
*	01-251-0020	Offset Link	1

\* Not Illustrated



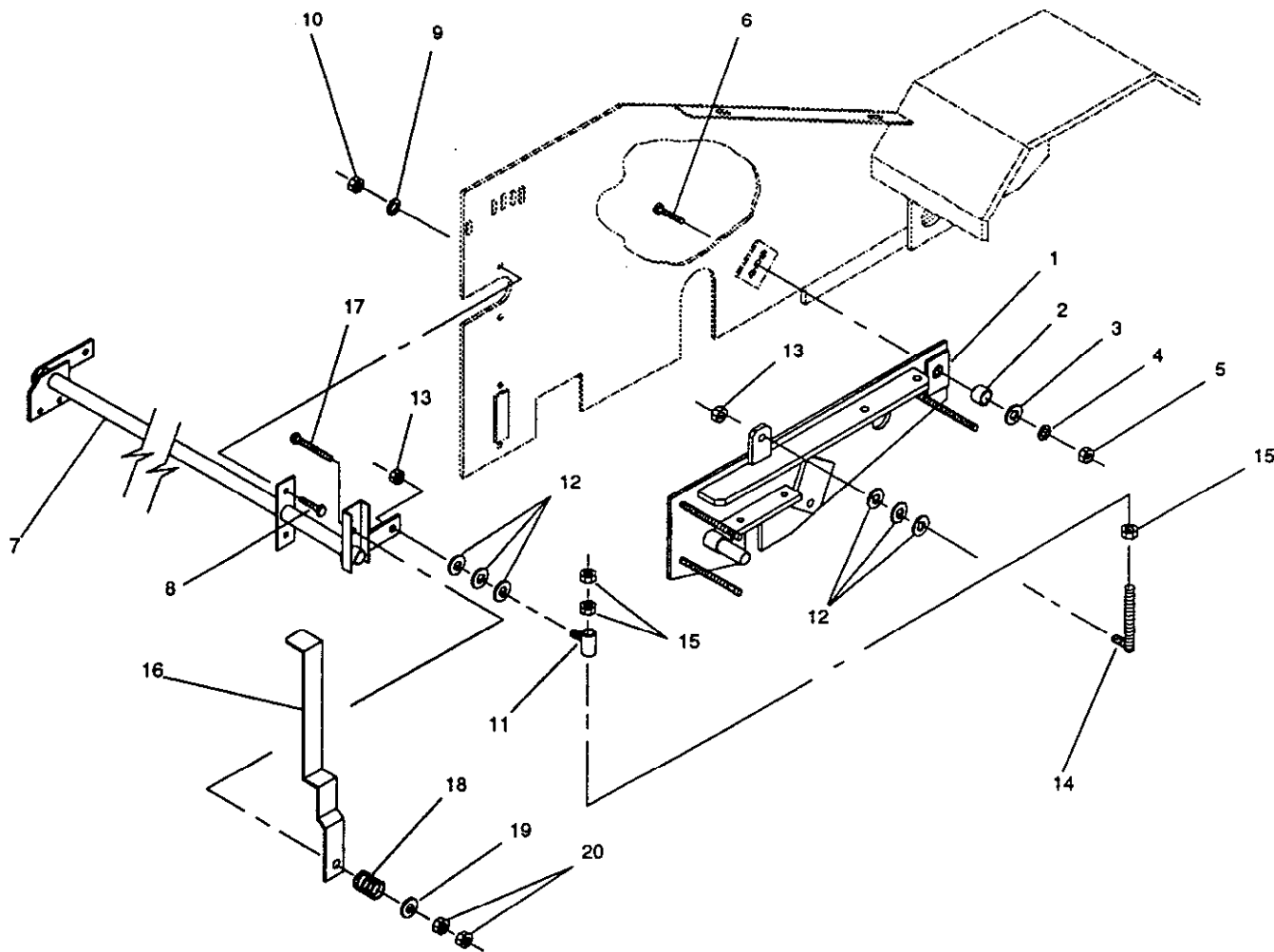
## CHAIN IDLER & GUARD ASSEMBLY

54-009

Ref. No.	Part No.	Description	No. Used
1	48-005-0191	Idler Shaft Assembly	1
2	48-004-3881	Spacer	1
3	3256-26	*SAE* Flat Washer	1
4	3253-7	Lock Washer	1
5	325-5	Capscrew - Hex Hd.	1
6	02-250-0020	Rod End Bearing	1
7	3220-3	Jam Nut	3
8	01-250-0020	Rod End Bearing	1
9	3217-7	Hex Nut	5
10	48-004-3891	Idler Spring Rod	1
11	3256-4	Flat Washer	3
12	01-261-0300	Spring	1

Ref. No.	Part No.	Description	No. Used
13	01-168-1410	Machinery Bushing	11(var)
14	01-168-1414	Machinery Bushing	5(var)
15	01-262-0610	Sprocket	1
16	01-105-0520	Needle Bearing	2
*	48-002-5441	Idler Sprocket Assembly (Incl. Ref. # 15, 16)	1
17	3272-23	Cotter Pin	1
18	48-005-0162	Idler Cover	1
19	3256-5	Flat Washer	3
20	3296-48	Lock Nut	3
21	01-506-0050	Decal - Danger	1

\* Not Illustrated

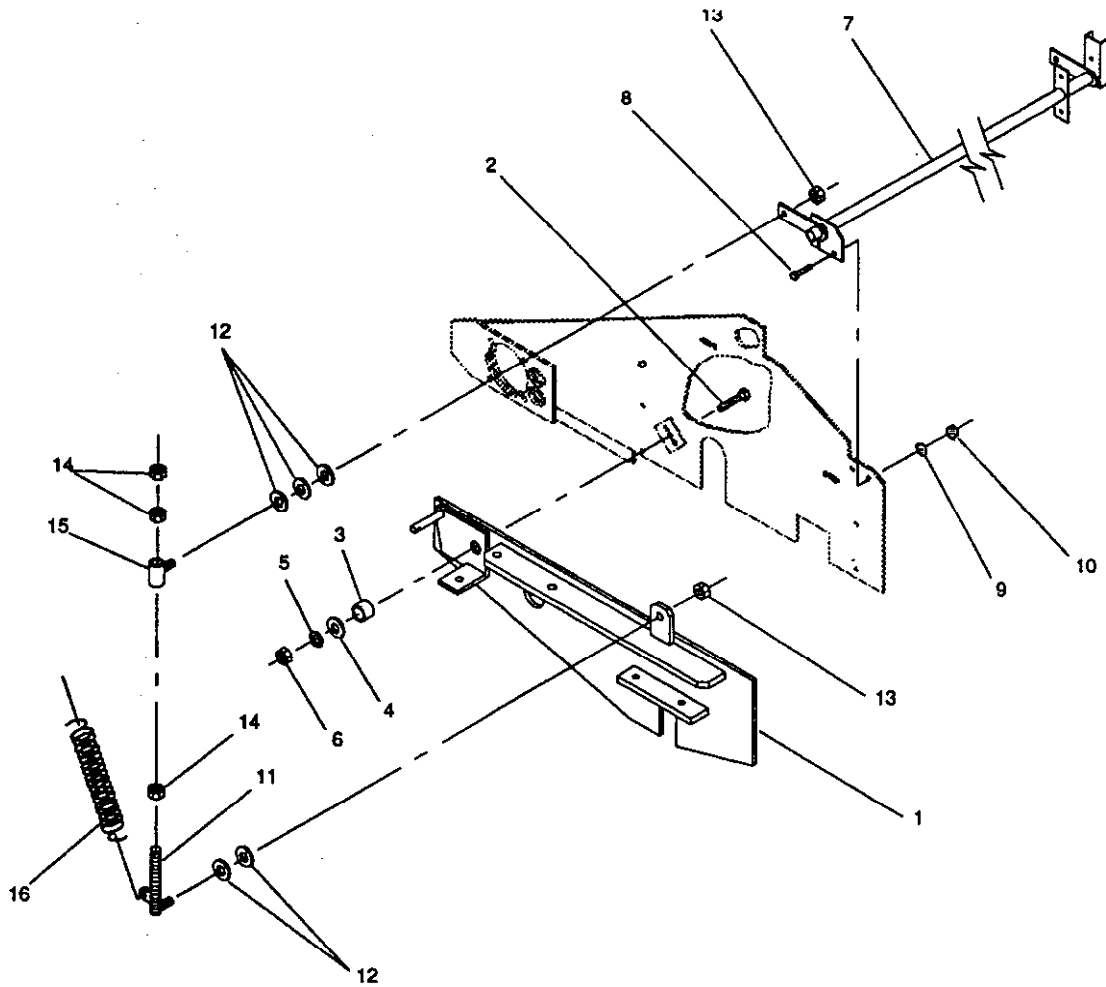


## REEL LIFT ASSEMBLY - L.H.

54-010

Ref. No.	Part No.	Description	No. Used
1	48-005-0182	Reel Plate Assembly-L.H.	1
2	48-004-5841	Reel Plate Spacer	1
3	3256-27	"SAE" Flat Washer	1
4	3253-8	Lock Washer	1
5	3218-6	Jam Nut	1
6	327-6	Capscrew - Hex Hd.	1
7	54-005-0131	Reel Lift Assembly	1
8	323-6	Capscrew - Hex Hd.	2
9	3253-5	Lock Washer	2
10	3217-7	Hex Nut	2

Ref. No.	Part No.	Description	No. Used
11	48-005-0591	Reel Lift Tube Assembly	1
12	3256-6	Flat Washer	6
13	01-189-0813	Lock Nut	2
14	48-005-0231	Reel Lift Rod Assembly-L.H.	1
15	3217-11	Hex Nut	3
16	48-005-0222	Handle	1
17	323-11	Capscrew - Hex Hd.	1
18	01-261-0240	Spring	1
19	3256-4	Flat Washer	1
20	3218-3	Jam Nut	2

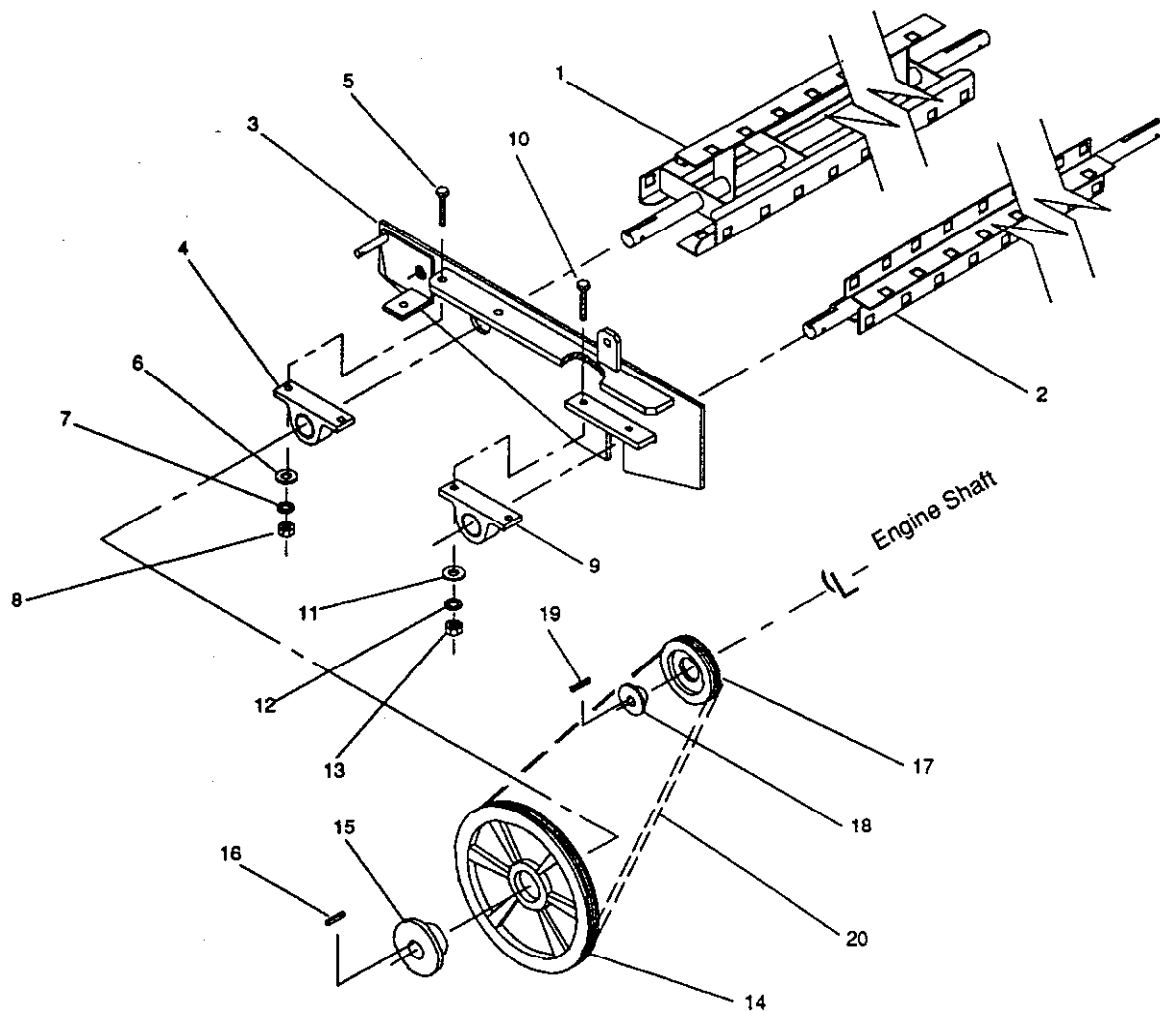


## REEL LIFT ASSEMBLY - R.H.

54-011

Ref. No.	Part No.	Description	No. Used
1	48-005-0172	Reel Plate Assembly-R.H.	1
2	327-6	Capscrew - Hex Hd.	1
3	48-004-5841	Reel Plate Spacer	1
4	3256-27	"SAE" Flat Washer	1
5	3253-8	Lock Washer	1
6	3218-6	Jam Nut	1
7	54-005-0131	Reel Lift Assembly	1
8	323-6	Capscrew - Hex Hd.	2

Ref. No.	Part No.	Description	No. Used
9	3253-5	Lock Washer	2
10	3217-7	Hex Nut	2
11	48-005-5781	Reel Lift Rod Assembly-R.H.	1
12	3256-6	Flat Washer	5
13	01-189-0813	Lock Nut	2
14	3217-11	Hex Nut	3
15	48-005-0591	Reel Lift Tube Assembly	1
16	01-261-0340	Spring	1

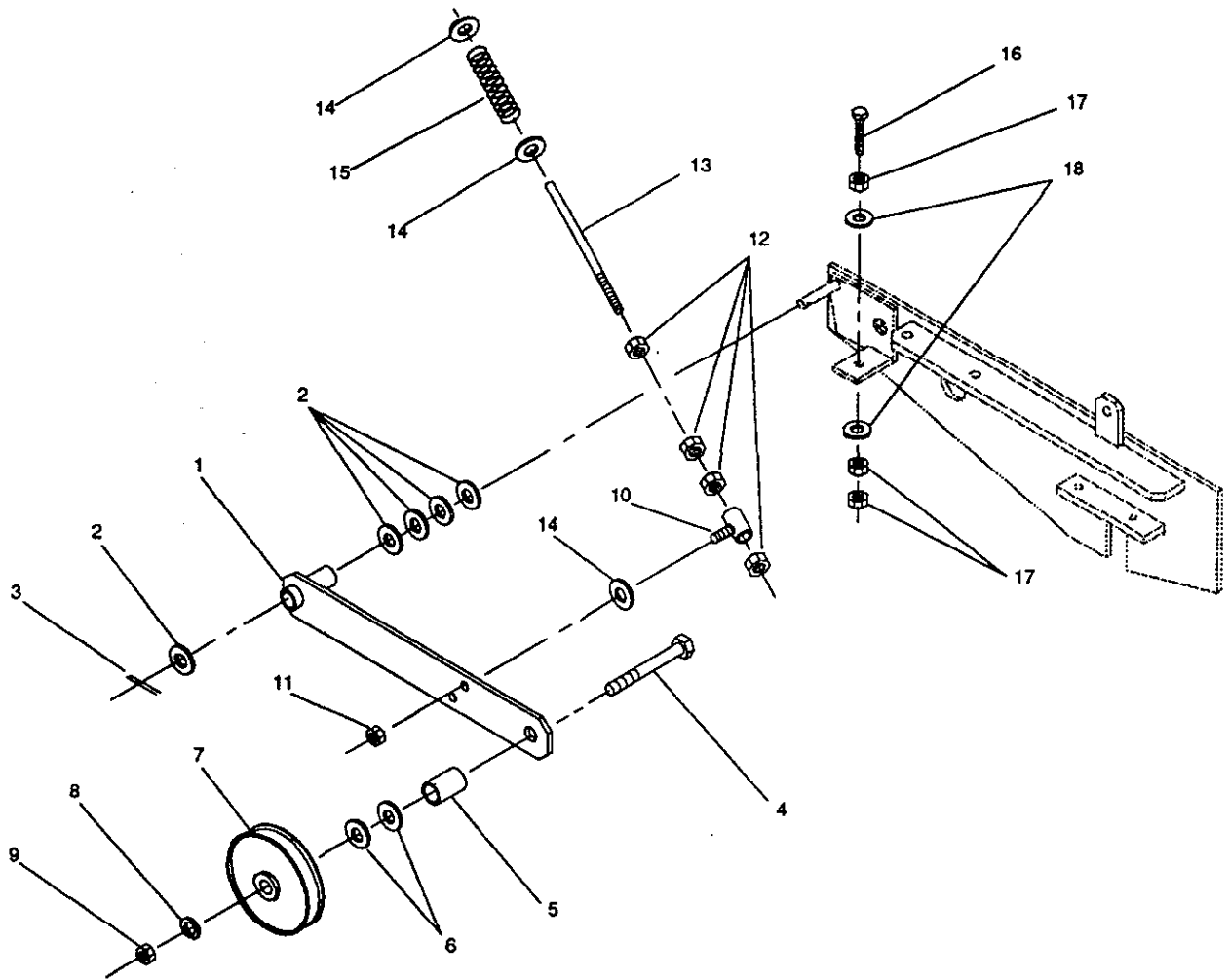


## BELT DRIVE ASSEMBLY

64-012

Ref. No.	Part No.	Description	No. Used
1	66-005-0242	Rear Reel Assembly	1
2	66-005-0231	Front Reel Assembly	1
3	48-005-0172	Reel Plate Assembly-R.H.	1
4	01-113-0020	Bearing	1
5	325-7	Capscrew - Hex Hd.	2
6	3256-6	Flat Washer	2
7	3253-7	Lock Washer	2
8	3217-9	Hex Nut	2
9	01-113-0010	Bearing	1
10	323-8	Capscrew - Hex Hd.	2

Ref. No.	Part No.	Description	No. Used
11	3256-4	Flat Washer	2
12	3253-5	Lock Washer	2
13	3217-7	Hex Nut	2
14	01-260-0010	Sheave	1
15	01-260-0290	Bushing	1
16	66-004-3211	Key	1
17	01-260-0110	Sheave	1
18	01-260-0780	Bushing	1
19	82-004-1171	Key	1
20	01-264-0230	Belt	1

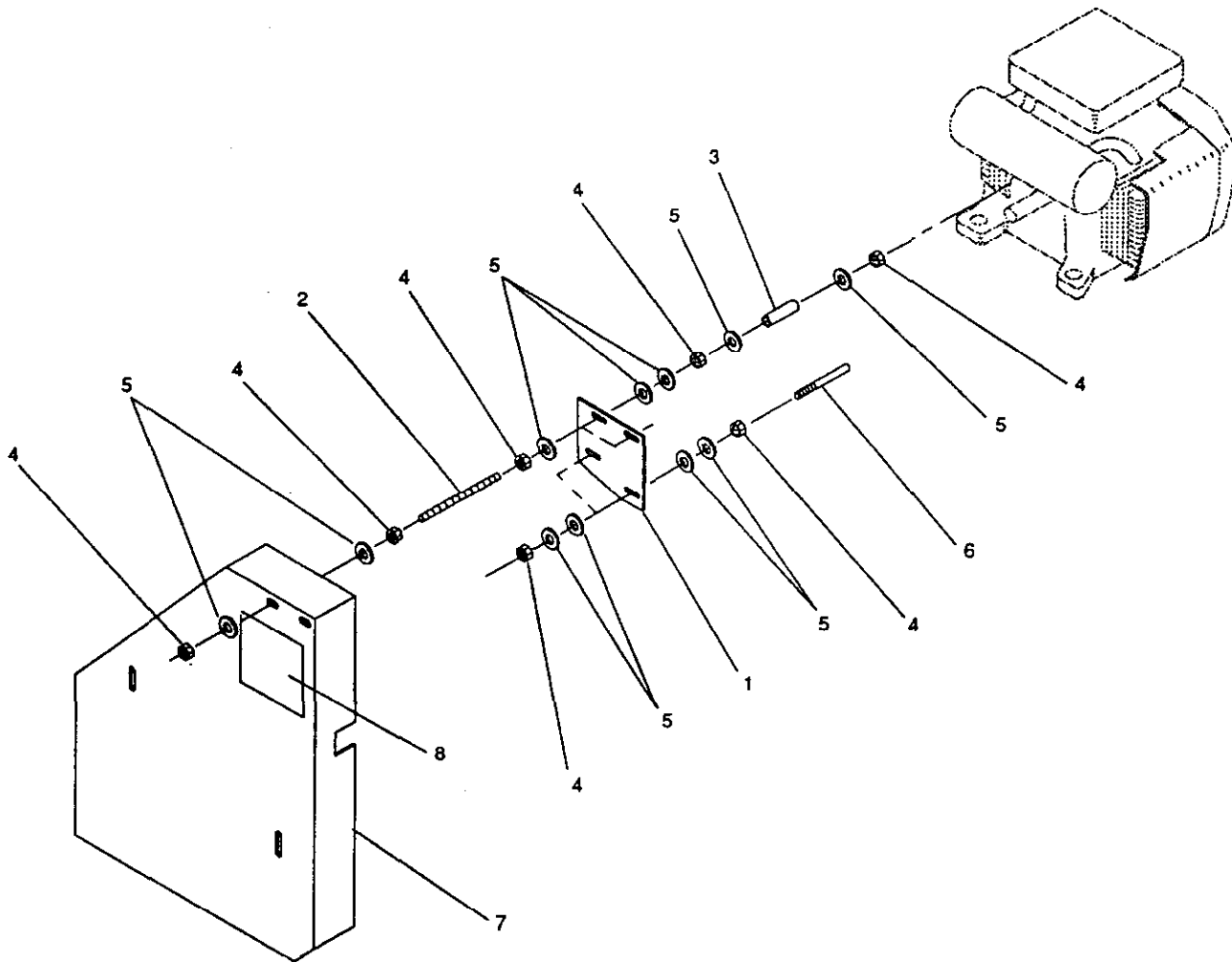


## BELT IDLER ASSEMBLY

54-013

Ref. No.	Part No.	Description	No. Used
1	48-005-0611	Idler Arm	1
2	01-168-1014	Machinery Bushing	5
3	3272-21	Cotter Pin	1
4	327-14	Capscrew - Hex Hd.	1
5	48-004-3471	Spacer	1
6	3256-7	Flat Washer	3
7	01-268-0010	Pulley	1
8	3253-8	Lock Washer	1
9	3217-11	Hex Nut	1

Ref. No.	Part No.	Description	No. Used
10	48-005-0121	Spring Tension Adjustment	1
11	3296-39	Lock Nut	1
12	3217-7	Hex Nut	4
13	48-004-1711	Idler Spring Rod	1
14	3256-4	Flat Washer	3
15	01-261-0300	Spring	1
16	01-182-0832	Capscrew - Hex Hd.	1
17	3217-9	Hex Nut	3
18	3256-6	Flat Washer	2

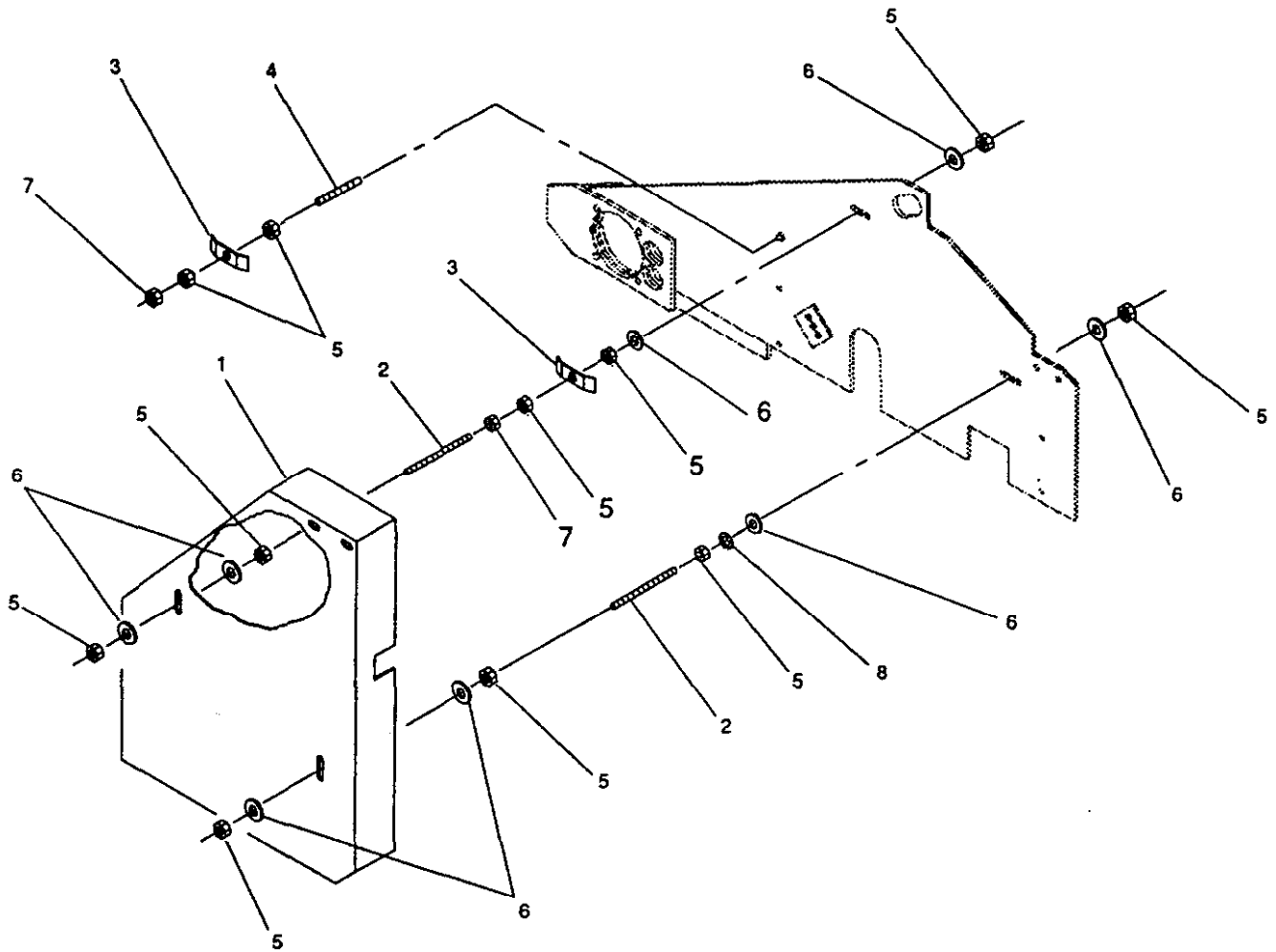


## BELT SLIP BRACKET

54-014

Ref. No.	Part No.	Description	No. Used
1	54-004-1331	Belt Slip Bracket	1
2	01-650-0150	All Thread	2
3	48-004-6271	Spacer	2
4	3217-7	Hex Nut	14

Ref. No.	Part No.	Description	No. Used
5	3256-4	Flat Washer	22
6	48-004-1211	Belt Slip Pin	2
7	54-005-1611	Belt Guard	1
8	01-506-0040	Decal - Danger	1

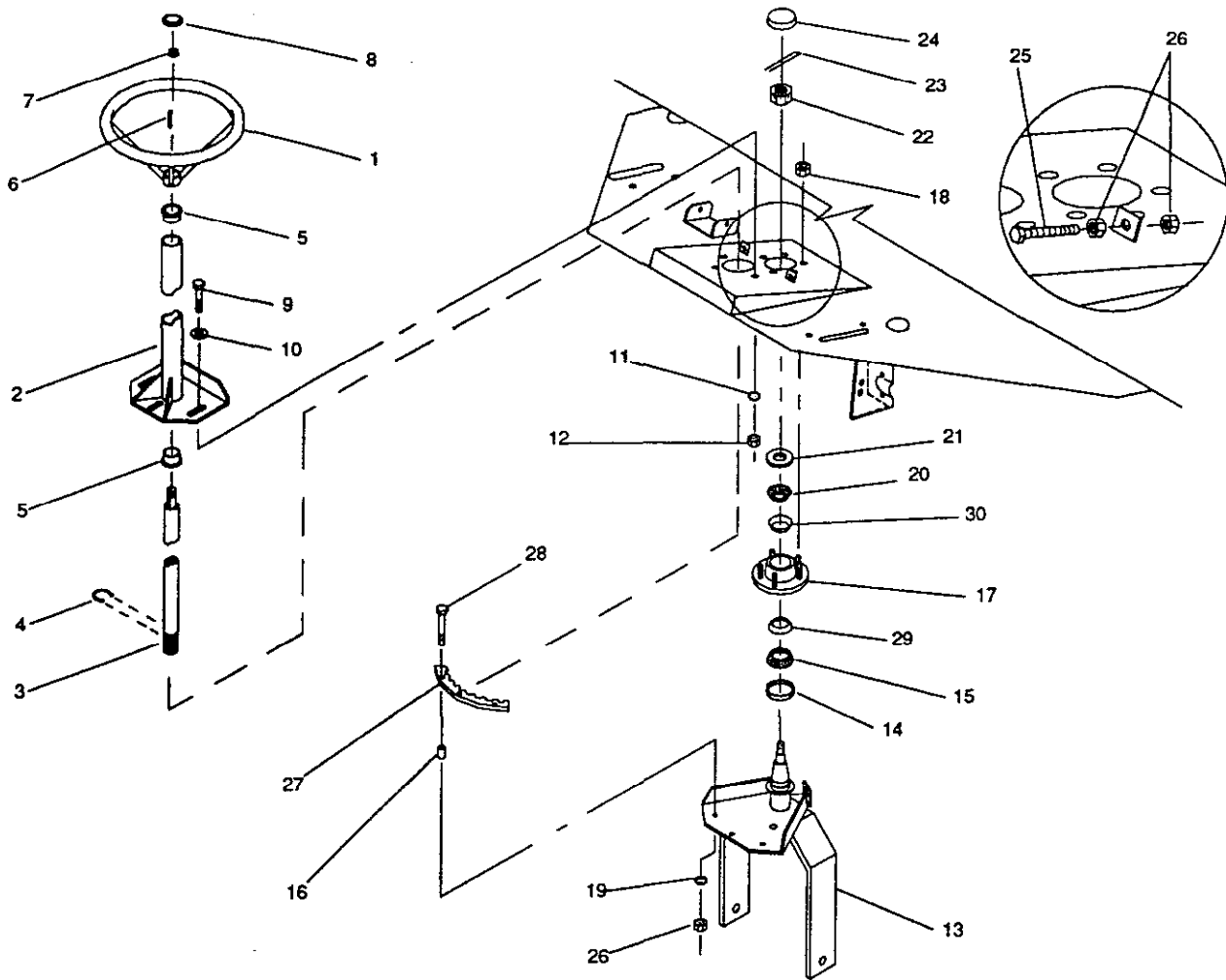


## BELT GUARD & HOSE BRACKETS

54-015

Ref. No.	Part No.	Description	No. Used
1	54-005-1611	Belt Guard	1
2	01-650-0440	All Thread	2
3	48-004-1861	Hose Hold Down Bracket	2
4	01-650-0280	All Thread	1

Ref. No.	Part No.	Description	No. Used
5	3217-8	Hex Nut	10
6	3256-5	Flat Washer	8
7	3218-4	Jam Nut	3
8	3253-6	Lock Washer	1



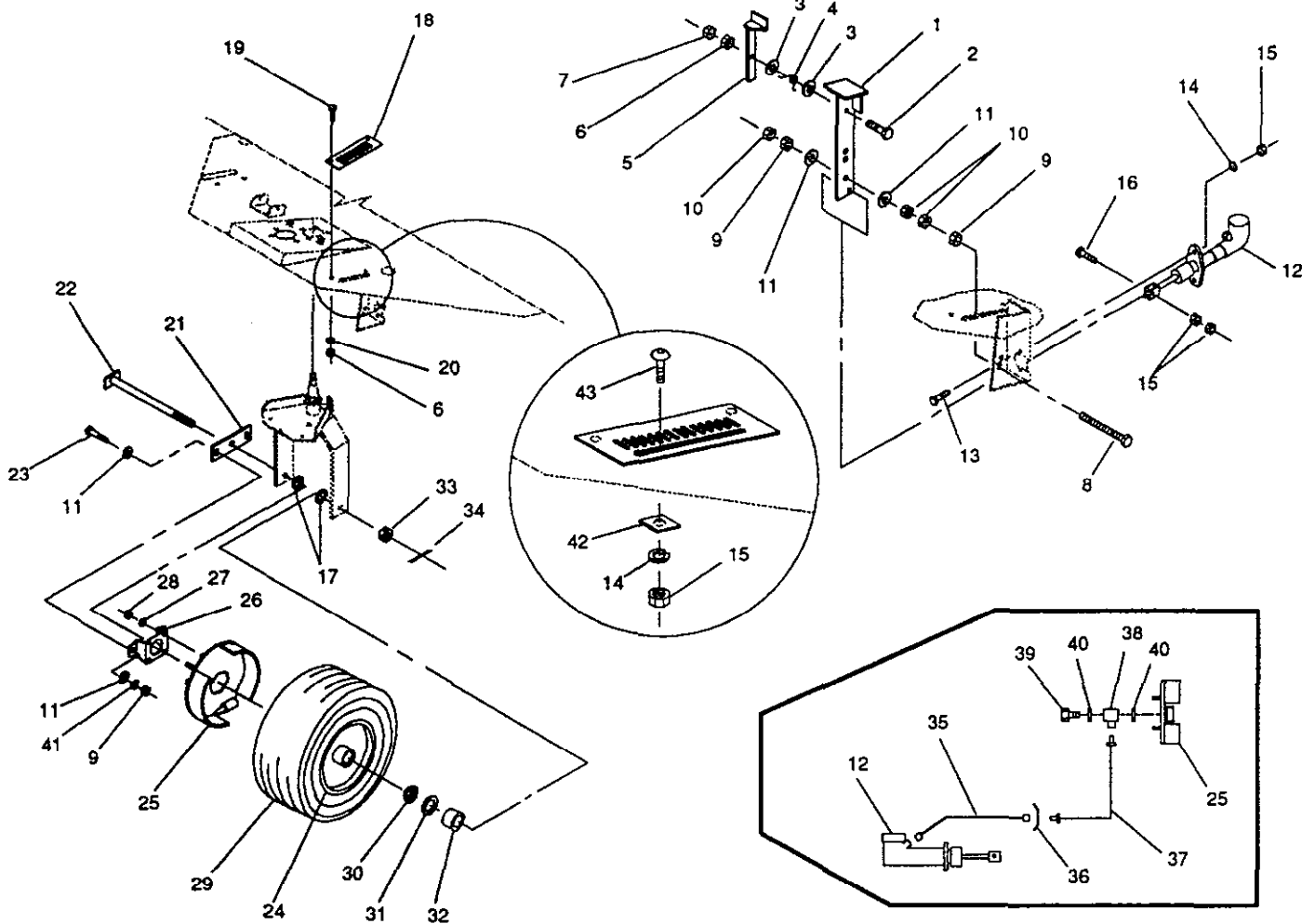
## STEERING ASSEMBLY

54-016

Ref. No.	Part No.	Description	No. Used
1	01-286-0130	Steering Wheel	1
2	54-005-1521	Steering Column Assembly	1
*	54-002-0011	Steering Column Assembly w/bushing (Incl. Ref. # 2,5)	1
3	54-004-1501	Steering Shaft	1
4	01-160-0370	Snap Ring	1
5	01-126-0110	Bushing, Oilite	2
6	48-004-1961	Key	1
7	3220-7	Jam Nut	1
8	01-286-0030	Cover Plate	1
9	325-6	Capscrew - Hex Hd.	3
10	3256-6	Flat Washer	3
11	3253-7	Lock Washer	3
12	3217-9	Hex Nut	3
13	54-005-0242	Steering Yoke Assembly	1
14	01-405-0370	Seal	1
15	01-102-0050	Bearing	1
16	48-004-4651	Sector Spacer	3

Ref. No.	Part No.	Description	No. Used
17	01-269-2040	Steering Hub (Incl. Ref. #29,30)	1
18	01-269-0300	Lug Nut	5
19	3253-5	Lock Washer	3
20	01-102-0070	Bearing	1
21	3256-28	"SAE" Flat Washer	1
22	01-190-1216	Castle Nut	1
23	3272-25	Cotter Pin	1
24	01-286-0040	Grease Cap	1
25	01-182-0620	Capscrew - Hex Hd.	2
26	3217-7	Hex Nut	7
27	48-004-1282	Steering Yoke Gear	1
28	323-11	Capscrew - Hex Hd.	3
29	01-103-0040	Inner Race	1
30	01-103-0140	Outer Race	1
*	01-269-0140	Steering Hub , complete (Incl. Ref. #14,15,17,18,20,24)	1

\* Not Illustrated



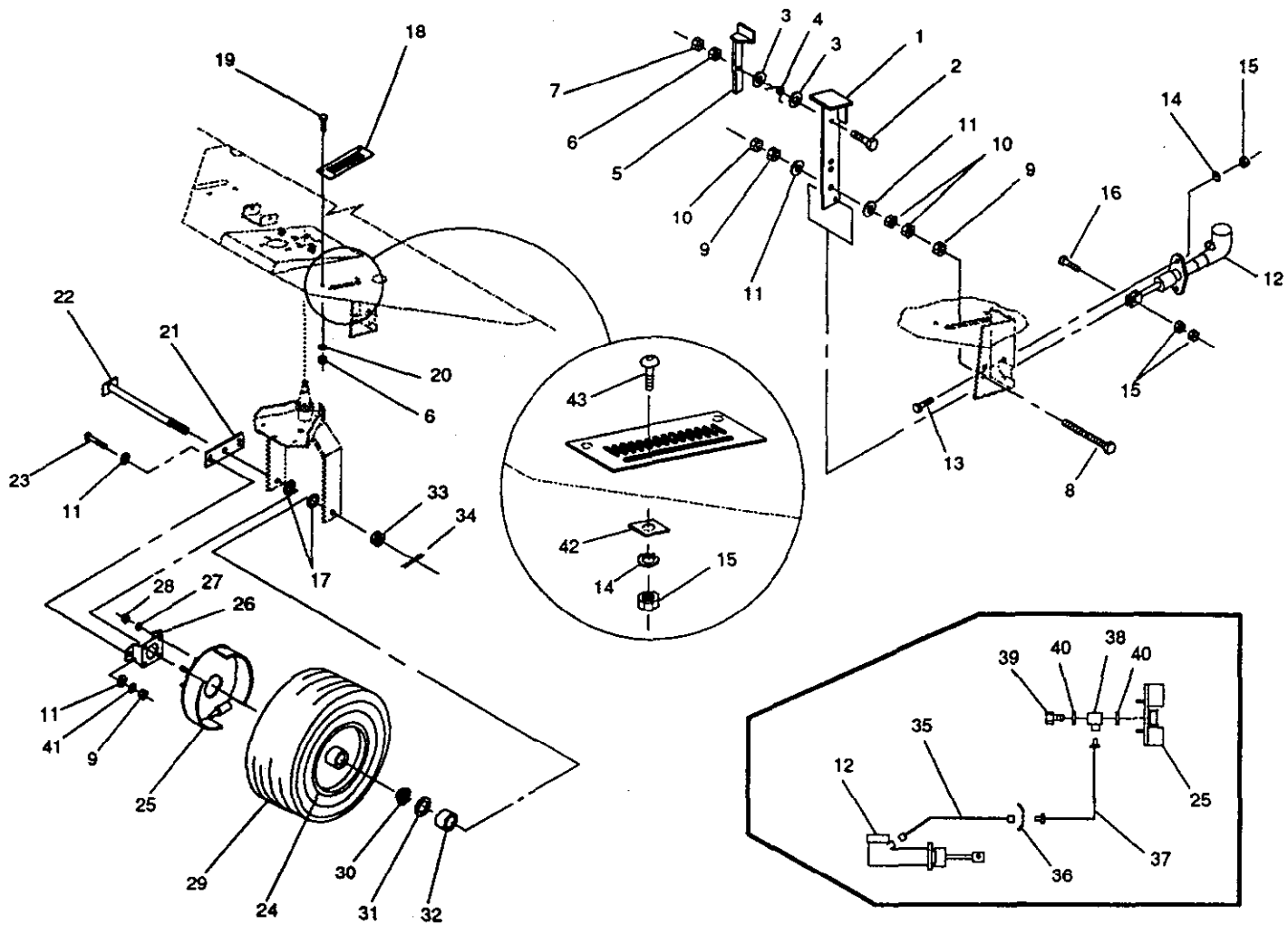
## BRAKE SYSTEM

54-017

Ref. No.	Part No.	Description	No. Used
1	48-005-0671	Brake Pedal	1
2	323-9	Capscrew - Hex Hd.	1
3	3256-4	Flat Washer	2
4	01-261-0050	Spring	1
5	48-005-0781	Brake Stop Weldment	1
6	3217-7	Hex Nut	3
7	3218-3	Jam Nut	1
8	01-182-0824	Capscrew - Hex Hd.	1
9	3217-9	Hex Nut	4
10	3218-5	Jam Nut	3
11	3256-6	Flat Washer	6
12	01-314-0290	Hydraulic Brake Cylinder	1
13	322-6	Capscrew - Hex Hd.	2
14	3253-4	Lock Washer	3
15	3217-6	Hex Nut	5
16	322-5	Capscrew - Hex Hd.	1
17	01-168-1210	Machinery Bushing	2
18	48-004-6241	Brake Stop Plate	1
19	323-6	Capscrew - Hex Hd.	2
20	3253-5	Lock Washer	2
21	54-005-0261	Brake Mount	1
22	54-005-0251	Axle	1
23	325-6	Capscrew - Hex Hd.	2

Ref. No.	Part No.	Description	No. Used
24	54-005-0282	Front Wheel	1
25	01-314-0300	Hydraulic Brake Assembly	1
*	01-266-0080	Wheel Cylinder Assembly	1
*	01-314-0500	Wheel Cylinder Repair Kit	1
*	01-314-0540	Capscrew - Socket Hd.	2
*	01-314-0430	Brake Shoe	2
*	01-314-0470	Brake Shoe Lever	2
*	01-314-0480	Brake Shoe Spring	2
*	01-314-0460	Anchor Pin	2
*	01-160-0380	Retaining Ring	2
*	01-314-0490	Adjusting Screw Assembly	2
*	01-314-0550	Shoulder Bolt	4
26	54-004-1241	Brake Shoe Bracket	1
27	3253-6	Lock Washer	4
28	3217-8	Hex Nut	4
29	01-269-0320	Front Tire	1
30	01-102-0130	Bearing	2
31	01-405-0460	Seal	2
32	01-269-0060	Axle Spacer	2
33	01-190-1210	Castle Nut	1
34	3272-23	Cotter Pin	1
35	01-314-0020	Hydraulic Brake Hose	1
36	01-314-0070	Brake Line Clip	1

\* Not Illustrated

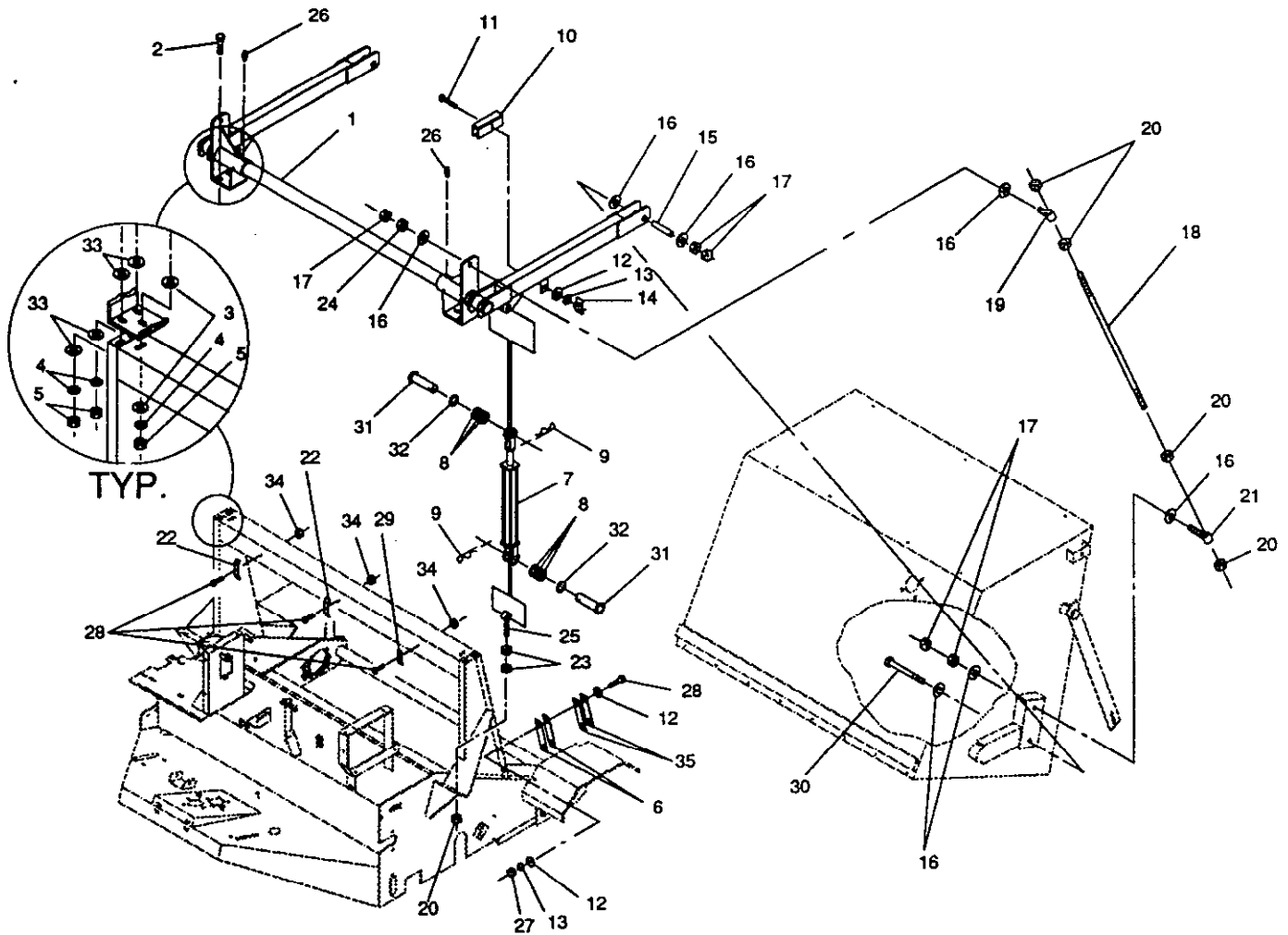


## BRAKE SYSTEM (Continued)

54-017

Ref. No.	Part No.	Description	No. Used
37	01-314-0330	Hydraulic Brake Line	1
38	01-314-0360	Connector	1
39	01-314-0340	Bolt	1
40	01-314-0350	Gasket	2

Ref. No.	Part No.	Description	No. Used
41	3253-7	Lock Washer	2
42	48-004-6631	Break Pedal Stop	1
43	3230-2	Carriage Bolt	1



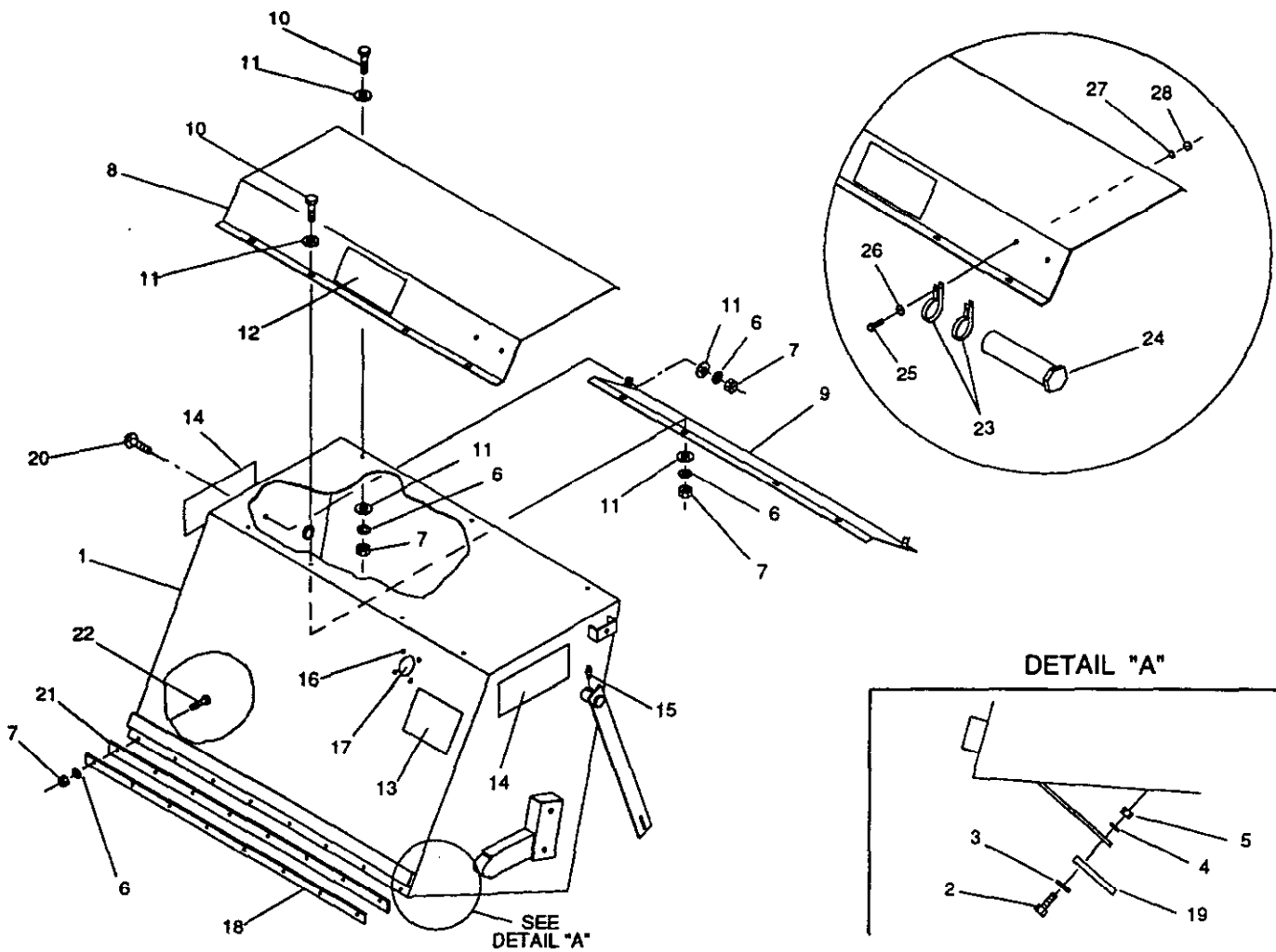
## HOPPER LIFT ARM ASSEMBLY

54-018

Ref. No.	Part No.	Description	No. Used
1	54-005-0172	Main Lift Arm	1
2	325-6	Capscrew - Hex Hd.	6
3	3256-6	Flat Washer	4
4	3253-7	Lock Washer	6
5	3217-9	Hex Nut	6
6	54-004-0531	Hopper Stop Spacer	4(var)
7	01-301-0050	Hopper Lift Cylinder (Incl. Ref. #9,31)	2
*	01-301-0100	Seal Kit	1
8	01-168-1610	Machinery Bushing	12
9	01-159-0010	Presto Pin	4
10	48-005-0561	Cylinder Safety Stop	2
11	3231-10	Carriage Bolt	2
12	3256-4	Flat Washer	10
13	3253-5	Lock Washer	6
14	01-192-0070	Wing Nut	2
15	48-004-3441	Spacer	2
16	01-166-1200	Flat Washer	14
17	3218-7	Jam Nut	10

Ref. No.	Part No.	Description	No. Used
18	48-004-3052	Upper Arm	2
19	48-005-0381	Upper Pivot Arm Bracket	2
20	3219-9	Hex Nut	10
21	48-005-0371	Lower Pivot Assembly	2
22	48-004-3431	Hose Bracket	2
23	01-191-1614	Jam Nut	4
24	3217-12	Hex Nut	2
25	48-005-0571	Cylinder Adj. Pivot	2
26	01-215-0050	Grease Zerk	2
27	3217-7	Hex Nut	4
28	323-9	Capscrew - Hex Hd.	7
29	48-004-4831	Hose Clamp	1
30	328-23	Capscrew - Hex Hd.	2
31	01-252-0150	Clevis Pin	4
32	01-168-1614	Machinery Bushing	4
33	3256-26	"SAE" Flat Washer	8
34	3296-39	Lock Nut	3
35	54-004-0891	Spacer	4(var)

\* Not Illustrated

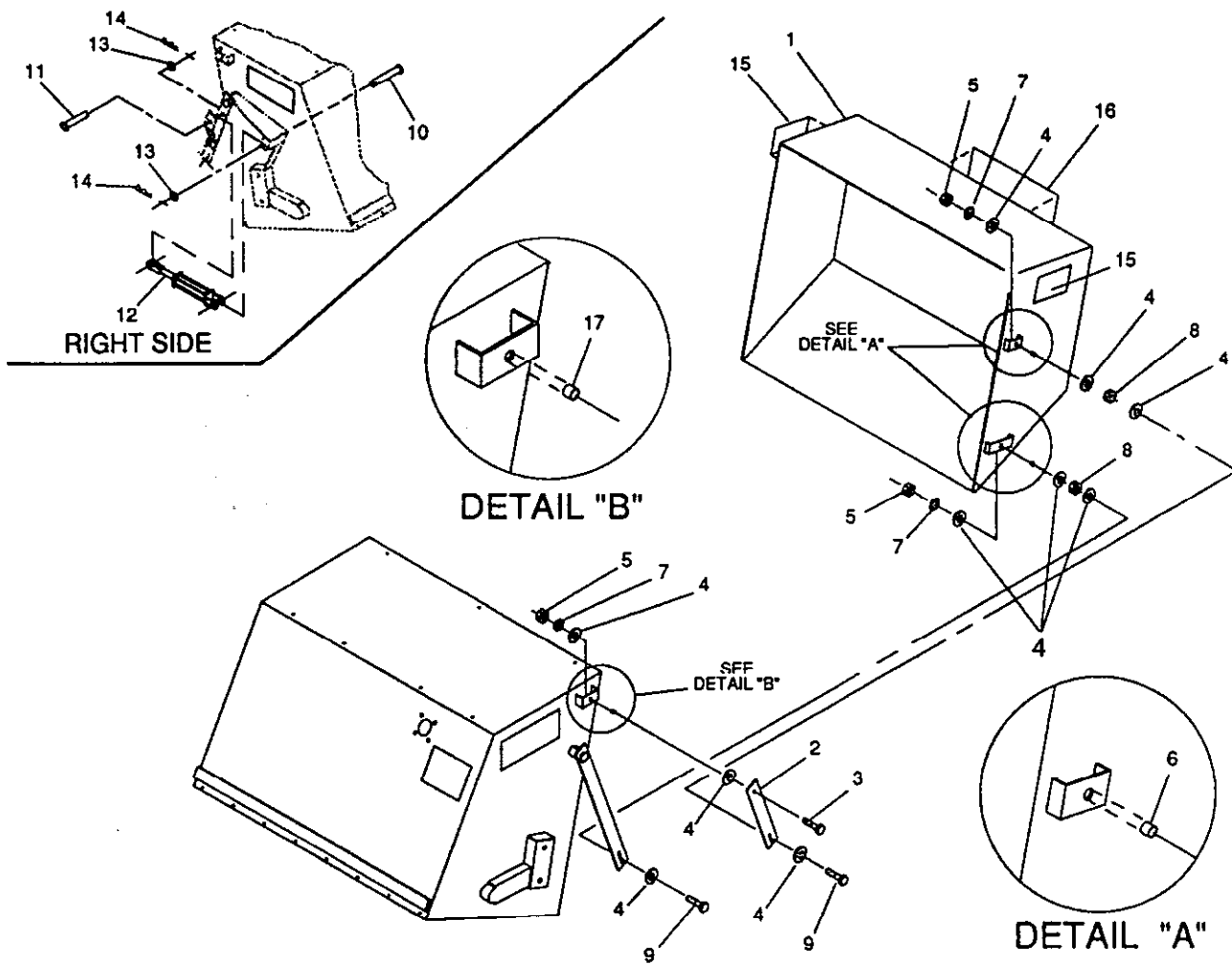


## HOPPER ASSEMBLY

54-019

Ref. No.	Part No.	Description	No. Used
1	54-005-0093	Hopper	1
2	322-3	Capscrew - Hex Hd.	9
3	3256-3	Flat Washer	9
4	3253-4	Lock Washer	9
5	3217-6	Hex Nut	9
6	3253-5	Lock Washer	17
7	3217-7	Hex Nut	17
8	54-005-0161	Dust Shield Assembly	1
9	54-004-1412	Wet Leaf Deflector	1
10	01-184-0610	Machine Screw - Rd. Hd.	7
11	3256-4	Flat Washer	16
12	01-506-0510	Decal - Toro	1
13	01-506-0070	Decal - Danger	1
14	01-506-0740	Decal - Turf Sweeper 5400HL	2

Ref. No.	Part No.	Description	No. Used
15	01-215-0050	Grease Zerk	2
16	01-161-0030	Pop Rivet	4
17	48-004-4641	Peep Hole Cover	1
18	54-004-1421	Rubber Flap Mount	1
19	54-004-1281	Hopper Floor Seal	1
20	3231-2	Carriage Bolt	2
21	54-004-1431	Hopper Flap	1
22	323-7	Capscrew - Hex Hd.	8
23	2412-133	R-Clamp	2
24	74-0720	Manual Tube	1
25	321-4	Capscrew - Hex Hd.	2
26	3256-2	Flat Washer	2
27	3253-3	Lock Washer	2
28	3217-5	Hex Nut	2



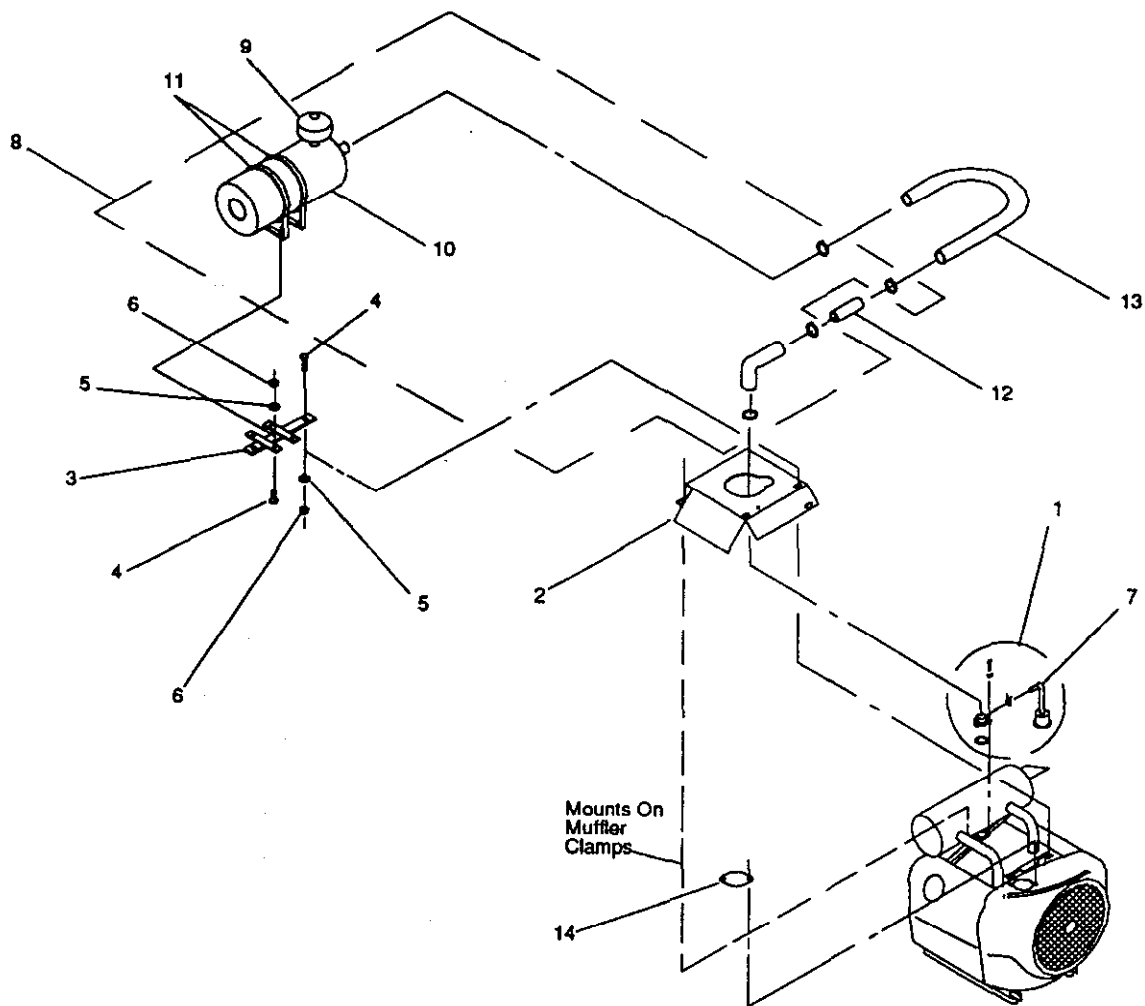
## HOPPER DOOR ASSEMBLY

54-022

Ref. No.	Part No.	Description	No. Used
1	54-005-0122	High Lift Hopper Door	1
2	54-004-0861	Door Linkage-Upper	2
3	325-7	Capscrew - Hex Hd.	2
4	3256-6	Flat Washer	20
5	3217-9	Hex Nut	6
6	48-004-6101	Hopper Box Spacer	4
7	3253-7	Lock Washer	6
8	3218-5	Jam Nut	4
9	325-8	Capscrew - Hex Hd.	4

Ref. No.	Part No.	Description	No. Used
10	48-005-0341	Hopper Door Cyl. Pin-lower	1
11	48-005-0331	Hopper Door Cyl. Pin-upper	1
12	01-301-0060	Door Lift Cylinder	1
*	01-301-0100	Seal Kit	1
13	3256-42	Flat Washer	2
14	01-159-0010	Presto Pin	2
15	01-506-0060	Decal - Danger	2
16	01-506-0530	Decal - Toro	1
17	48-004-6311	Hopper Box Spacer	2

\* Not Illustrated



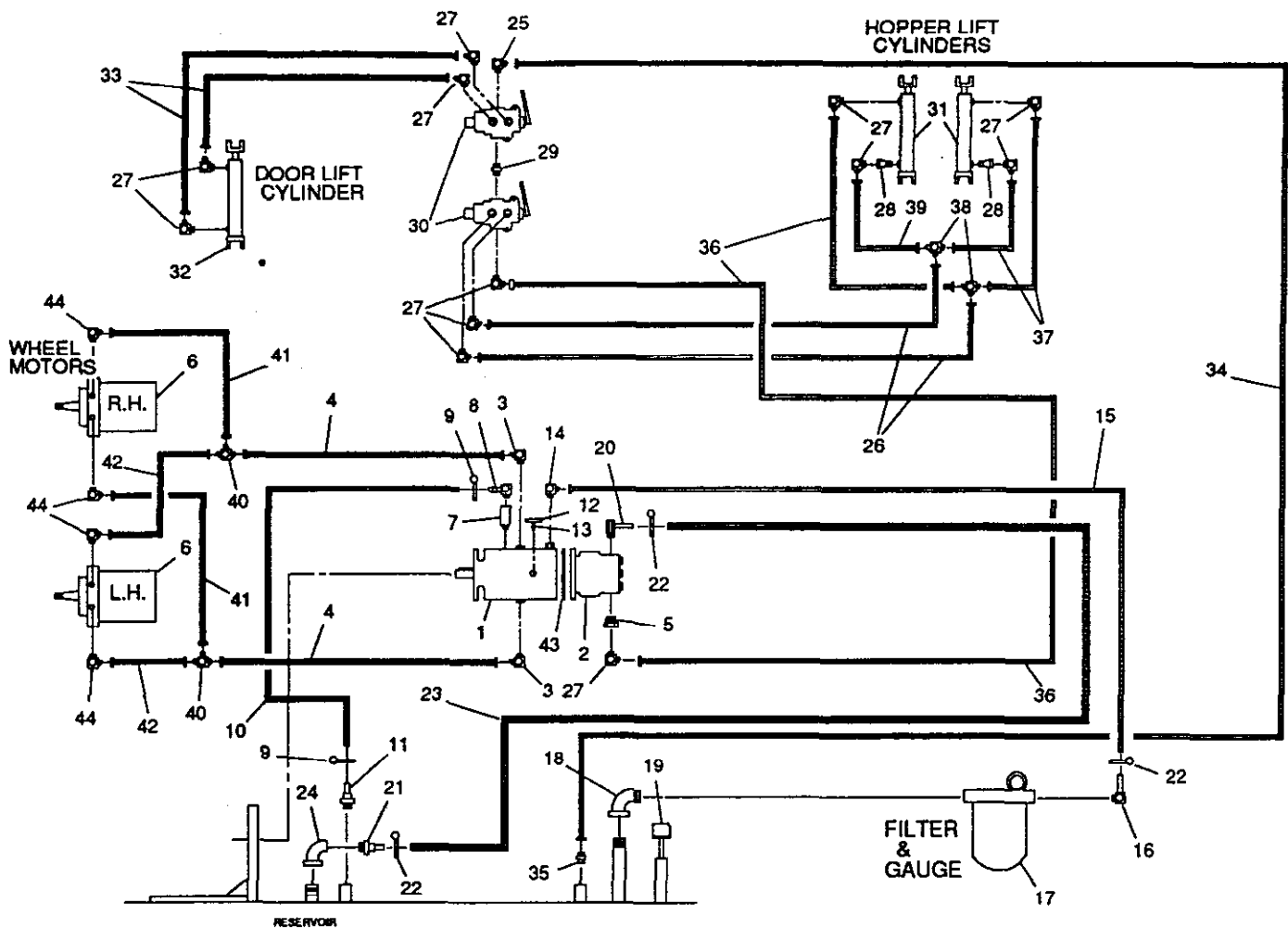
## DONALDSON AIR CLEANER - MODEL NO. 44030

54-020

Ref. No.	Part No.	Description	No. Used
1	01-289-0330	Adaptor Kit (Incl. Ref. #7, 14)	1
2	54-004-1452	Air Cleaner Base	1
3	48-005-0791	Air Cleaner Mount	1
4	322-5	Capscrew - Hex Hd.	6
5	3253-4	Lock Washer	6
6	3217-6	Hex Nut	6
7	01-289-0380	Breather Tube	1
8	01-289-0280	Air Cleaner Kit	1

Ref. No.	Part No.	Description	No. Used
*	01-289-0470	Filter Element (Incl. w/Ref. #8)	1
9	01-289-0290	Air Cleaner-Top	1
10	01-289-0310	Air Cleaner (Incl. Ref. #11)	1
11	01-289-0320	Bands	1
12	93-004-0511	Spacer	1
13	54-004-1701	Hose	1
14	54-004-1461	Cap	1

\* Not Illustrated



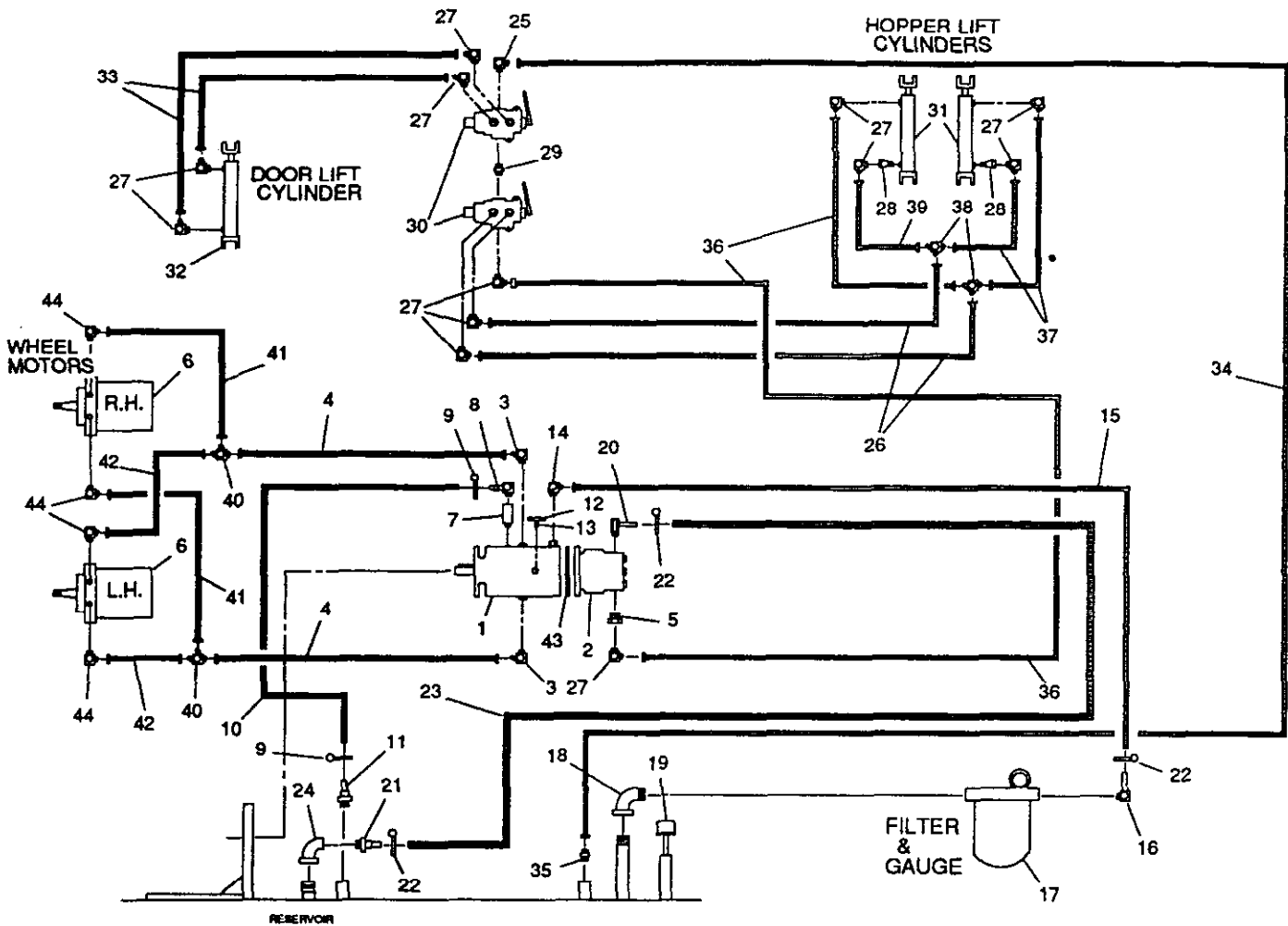
## 5400HL - HYDRAULIC SCHEMATIC

54-021

Ref. No.	Part No.	Description	No. Used
1	01-305-0090	Cessna Pump	1
*	01-305-0080	Seal Kit	1
2	01-305-0020	Sundstrand Pump	1
*	01-305-0600	Seal Kit	1
3	01-201-0440	Fitting	2
4	01-312-1260	Hose Assembly	2
5	01-201-0020	Fitting	1
6	01-304-0410	Hyd. Motor	2
*	01-304-0260	Seal Kit	1
7	01-201-0490	Fitting	1
8	01-217-0050	Hose Barb	1
9	01-202-0030	Hose Clamp	2
10	48-004-4921	Hose Assembly	1
11	01-217-0060	Hose Barb	1
12	48-005-0641	Tow Valve Handle	1
13	01-163-0100	Set Screw	1
14	01-201-1880	Fitting	1
15	01-312-1620	Hose Assembly	1
16	01-201-1890	Fitting	1
17	01-316-0020	Filter Assembly	1
*	01-315-0010	Filter Head	1
*	01-317-0120	Filter Element	1
*	01-303-0010	Filter Gauge	1

Ref. No.	Part No.	Description	No. Used
18	01-455-0020	Fitting	1
19	48-002-0101	Breather Cap w/dipstick	1
20	01-201-1080	Fitting	1
21	01-201-0750	Fitting	1
22	01-202-0050	Hose Clamp	3
23	48-004-4931	Hose Assembly	1
24	01-455-0080	Fitting	1
25	01-201-0530	Fitting	1
26	01-312-0500	Hose Assembly	2
27	01-201-0190	Fitting	12
28	01-310-0040	Fitting	2
29	01-201-0160	Fitting	1
30	01-308-0050	Valve	2
*	01-308-0130	Seal Kit	1
31	01-301-0050	Cylinder	2
*	01-301-0100	Seal Kit	1
32	01-301-0060	Cylinder	1
*	01-301-0100	Seal Kit	1
33	01-312-0210	Hose Assembly	2
34	01-312-0840	Hose Assembly	1
35	01-201-0810	Fitting	1
36	01-312-0370	Hose Assembly	2
37	01-312-0200	Hose Assembly	2

\* Not Illustrated



## 5400HL - HYDRAULIC SCHEMATIC (Continued)

64-021

Ref. No.	Part No.	Description	No. Used
38	01-201-0140	Fitting	2
39	01-312-0360	Hose Assembly	1
40	01-201-1530	Fitting	2
41	01-312-1430	Hose Assembly	2

Ref. No.	Part No.	Description	No. Used
42	01-312-1440	Hose Assembly	2
43	01-402-0230	O-ring	1
44	01-201-1580	Fitting	4

# PART NUMBER INDEX

Part No.	Description	Pg. No.	Ref. No.	Qty.	Part No.	Description	Pg. No.	Ref. No.	Qty.
01-102-0050	Bearing	14	15	1	01-201-1580	Fitting	22	44	4
01-102-0070	Bearing	14	20	1	01-201-1880	Fitting	21	14	1
01-102-0130	Bearing	15	30	2	01-201-1890	Fitting	21	16	1
01-103-0040	Inner Race	14	29	1	01-202-0030	Hose Clamp	21	9	2
01-103-0140	Outer Race	14	30	1	01-202-0030	Hose Clamp	4	5	2
01-105-0520	Needle Bearing	6	26	2	01-202-0050	Hose Clamp	21	22	3
01-105-0520	Needle Bearing	7	16	2	01-215-0050	Grease Zerk	17	26	2
01-113-0010	Bearing	10	9	1	01-215-0050	Grease Zerk	18	15	2
01-113-0010	Bearing	6	15	1	01-217-0050	Hose Barb	21	8	1
01-113-0020	Bearing	10	4	1	01-217-0060	Hose Barb	21	11	1
01-113-0020	Bearing	6	5	1	01-217-0060	Hose Barb	4	4	1
01-126-0110	Bushing, Oilite	14	5	2	01-250-0020	Rod End Bearing	5	7	1
01-151-0170	Cotter Pin	1	21	2	01-250-0020	Rod End Bearing	7	8	1
01-158-0150	Cap screw - Socket Hd.	3	23	8	01-251-0020	Offset Link	6	*	1
01-158-0270	Shoulder Bolt	5	2	2	01-252-0150	Clevis Pin	17	31	4
01-158-1610	Lug Bolt	1	24	10	01-260-0010	Sheave	10	14	1
01-159-0010	Presto Pin	17	9	4	01-260-0110	Sheave	10	17	1
01-159-0010	Presto Pin	19	14	2	01-260-0290	Bushing	10	15	1
01-160-0370	Snap Ring	14	4	1	01-260-0780	Bushing	10	18	1
01-160-0380	Retaining Ring	15	*	2	01-260-0900	"H" Bushing	3	24	1
01-161-0030	Pop Rivet	18	16	4	01-261-0050	Spring	15	4	1
01-163-0100	Set Screw	21	13	1	01-261-0240	Spring	1	4	4
01-163-0100	Set Screw	3		*1	01-261-0240	Spring	8	18	1
01-166-1200	Flat Washer	17	16	14	01-261-0300	Spring	11	15	1
01-168-1014	Machinery Bushing	11	2	5	01-261-0300	Spring	7	12	1
01-168-1210	Machinery Bushing	15	17	2	01-261-0330	Spring	5	12	1
01-168-1410	Machinery Bushing	6	23	6	01-261-0340	Spring	9	16	1
01-168-1410	Machinery Bushing	7	13	11	01-261-0780	Spring	5	13	1
01-168-1414	Machinery Bushing	6	24	4	01-262-0520	Sprocket	6	11	1
01-168-1414	Machinery Bushing	7	14	5	01-262-0530	Sprocket	6	22	1
01-168-1610	Machinery Bushing	17	8	12	01-262-0610	Sprocket	6	25	1
01-168-1610	Machinery Bushing	6	20	3	01-262-0610	Sprocket	7	15	1
01-168-1614	Machinery Bushing	17	32	4	01-264-0230	Belt	10	20	1
01-168-1614	Machinery Bushing	6	21	6	01-265-0180	Flex Coupling	3	21	1
01-168-2010	Machinery Bushing	6	13	2	01-266-0080	Wheel Cylinder Assembly	15	*	1
01-168-2014	Machinery Bushing	6	10	3	01-268-0010	Pulley	11	7	1
01-169-0010	Lock Washer	3	22	8	01-269-0060	Axle Spacer	15	32	2
01-170-0150	Clamp	3	5	2	01-269-0140	Steering Hub	14	*	1
01-182-0616	Cap screw - Hex Hd.	1	7	5	01-269-0300	Lug Nut	14	18	5
01-182-0620	Cap screw - Hex Hd.	14	25	2	01-269-0320	Front Tire	15	29	1
01-182-0824	Cap screw - Hex Hd.	15	8	1	01-269-0330	Tire	1	23	2
01-182-0832	Cap screw - Hex Hd.	11	16	1	01-269-1000	Hub	1	20	2
01-184-0610	Machine Screw - Rd. Hd.	18	10	7	01-269-1020	Wheel	1	22	2
01-189-0518	Lock Nut	5	4	2	01-269-2040	Steering Hub	14	17	1
01-189-0813	Lock Nut	8	13	2	01-270-2260	Engine	3	1	1
01-189-0813	Lock Nut	9	13	2	01-273-0260	Muffler	3	2	1
01-190-1210	Castle Nut	15	33	1	01-273-0270	Muffler Tube-short	3	*	1
01-190-1216	Castle Nut	14	22	1	01-273-0280	Muffler Tube-long	3	3	1
01-190-1620	Castle Nut	2	31	2	01-279-0010	Rubber Fingers	6	3	140
01-191-1614	Jam Nut	17	23	4	01-280-0020	Gas Cap	4	2	1
01-192-0070	Wing Nut	17	14	2	01-280-0190	Tank Withdrawal Assembly	4	3	1
01-201-0020	Fitting	21	5	1	01-286-0030	Cover Plate	14	8	1
01-201-0140	Fitting	22	38	2	01-286-0040	Grease Cap	14	24	1
01-201-0160	Fitting	21	29	1	01-286-0130	Steering Wheel	14	1	1
01-201-0190	Fitting	21	27	12	01-286-0220	Seat	1	6	1
01-201-0440	Fitting	21	3	2	01-288-0020	Hour Meter	1	25	1
01-201-0490	Fitting	21	7	1	01-289-0280	Air Cleaner Kit	20	8	1
01-201-0530	Fitting	21	25	1	01-289-0290	Air Cleaner-Top	20	9	1
01-201-0750	Fitting	21	21	1	01-289-0310	Air Cleaner	20	10	1
01-201-0810	Fitting	21	35	1	01-289-0320	Bands	20	11	1
01-201-1080	Fitting	21	20	1	01-289-0330	Adaptor Kit	20	1	1
01-201-1530	Fitting	22	40	2	01-289-0380	Breather Tube	20	7	1

\* Not Illustrated

# PART NUMBER INDEX (Continued)

Part No.	Description	Pg. No.	Ref. No.	Qty.	Part No.	Description	Pg. No.	Ref. No.	Qty.
01-289-0470	Filter Element	20	*	1	01-455-0080	Fitting	21	24	1
01-301-0050	Cylinder	21	31	2	01-455-0100	Elbow	1	12	1
01-301-0050	Hopper Lift Cylinder	17	7	2	01-506-0030	Decal - Danger	3	31	1
01-301-0060	Cylinder	21	32	1	01-506-0040	Decal - Danger	12	8	1
01-301-0060	Door Lift Cylinder	19	12	1	01-506-0050	Decal - Danger	7	21	1
01-301-0100	Seal Kit	17	*	1	01-506-0060	Decal - Danger	19	15	2
01-301-0100	Seal Kit	19	*	1	01-506-0070	Decal - Danger	18	13	1
01-301-0100	Seal Kit	21	*	1	01-506-0080	Decal - Danger	4	15	2
01-301-0100	Seal Kit	21	*	1	01-506-0090	Decal - Danger	2	28	1
01-303-0010	Filter Gauge	21	*	1	01-506-0170	Decal - Hopper Door/Lift	2	26	1
01-304-0260	Seal Kit	1	*	1	01-506-0460	Decal - Gas Only	4	13	1
01-304-0260	Seal Kit	21	*	1	01-506-0510	Decal - Toro	18	12	1
01-304-0410	Hyd. Motor	21	6	2	01-506-0530	Decal - Toro	19	16	1
01-304-0410	Hydraulic Motor	1	14	2	01-506-0540	Decal - No Riders	4	14	1
01-305-0020	Sundstrand Pump	21	2	1	01-506-0560	Decal - Hydraulic Oil	2	30	1
01-305-0020	Sundstrand Pump	3	6	1	01-506-0570	Decal - Traction Pedal	2	27	1
01-305-0080	Seal Kit	21	*	1	01-506-0740	Decal - Turf Sweeper 5400HL	18	14	2
01-305-0080	Seal Kit	3	*	1	01-506-0980	Decal - Parking Brake	2	29	1
01-305-0090	Cessna Pump	21	1	1	01-600-0050	Battery Cable	3	*	1
01-305-0090	Cessna Pump	3	27	1	01-600-0190	Battery Cable	3	*	1
01-305-0600	Seal Kit	21	*	1	01-650-0150	All Thread	12	2	2
01-305-0600	Seal Kit	3	*	1	01-650-0280	All Thread	13	4	1
01-308-0050	Valve	2	36	2	01-650-0440	All Thread	13	2	2
01-308-0050	Valve	21	30	2	02-250-0020	Rod End Bearing	7	6	1
01-308-0130	Seal Kit	2	*	1	2412-133	R-Clamp	18	23	2
01-308-0130	Seal Kit	21	*	1	321-4	Capscrew - Hex Hd.	18	25	2
01-310-0040	Fitting	21	28	2	321-6	Capscrew - Hex Hd.	3	14	2
01-312-0200	Hose Assembly	21	37	2	32121-12	Roll Pin	5	14	1
01-312-0210	Hose Assembly	21	33	2	3217-11	Hex Nut	11	9	1
01-312-0360	Hose Assembly	22	39	1	3217-11	Hex Nut	8	15	3
01-312-0370	Hose Assembly	21	36	2	3217-11	Hex Nut	9	14	3
01-312-0500	Hose Assembly	21	26	2	3217-12	Hex Nut	17	24	2
01-312-0840	Hose Assembly	21	34	1	3217-5	Hex Nut	18	28	2
01-312-1260	Hose Assembly	21	4	2	3217-6	Hex Nut	15	15	5
01-312-1430	Hose Assembly	22	41	2	3217-6	Hex Nut	18	5	9
01-312-1440	Hose Assembly	22	42	2	3217-6	Hex Nut	20	6	6
01-312-1620	Hose Assembly	21	15	1	3217-6	Hex Nut	2	35	4
01-314-0020	Hydraulic Brake Hose	15	35	1	3217-7	Hex Nut	1	11	15
01-314-0070	Brake Line Clip	15	36	1	3217-7	Hex Nut	10	13	2
01-314-0290	Hydraulic Brake Cylinder	15	12	1	3217-7	Hex Nut	11	12	4
01-314-0300	Hydraulic Brake Assembly	15	25	1	3217-7	Hex Nut	12	4	14
01-314-0330	Hydraulic Brake Line	16	37	1	3217-7	Hex Nut	14	26	7
01-314-0340	Bolt	16	39	1	3217-7	Hex Nut	15	6	3
01-314-0350	Gasket	16	40	2	3217-7	Hex Nut	17	27	4
01-314-0360	Connector	16	38	1	3217-7	Hex Nut	18	7	17
01-314-0430	Brake Shoe	15	*	2	3217-7	Hex Nut	3	12	6
01-314-0460	Anchor Pin	15	*	2	3217-7	Hex Nut	4	11	6
01-314-0470	Brake Shoe Lever	15	*	2	3217-7	Hex Nut	5	6	4
01-314-0480	Brake Shoe Spring	15	*	2	3217-7	Hex Nut	6	19	1
01-314-0490	Adjusting Screw Assembly	15	*	2	3217-7	Hex Nut	7	9	5
01-314-0500	Wheel Cylinder Repair Kit	15	*	1	3217-7	Hex Nut	8	10	2
01-314-0540	Capscrew - Socket Hd.	15	*	2	3217-7	Hex Nut	9	10	2
01-314-0550	Shoulder Bolt	15	*	4	3217-8	Hex Nut	13	5	10
01-315-0010	Filter Head	21	*	1	3217-8	Hex Nut	15	28	4
01-316-0020	Filter Assembly	21	17	1	3217-9	Hex Nut	1	17	8
01-317-0120	Filter Element	21	*	1	3217-9	Hex Nut	10	8	2
01-402-0230	O-Ring	22	43	1	3217-9	Hex Nut	11	17	3
01-402-0230	O-Ring	3	7	1	3217-9	Hex Nut	14	12	3
01-405-0370	Seal	14	14	1	3217-9	Hex Nut	15	9	4
01-405-0460	Seal	15	31	2	3217-9	Hex Nut	17	5	6
01-451-0010	Pipe Plug	1	13	1	3217-9	Hex Nut	19	5	6
01-455-0020	Fitting	21	18	1	3217-9	Hex Nut	6	9	2

\* Not Illustrated

# PART NUMBER INDEX (Continued)

Part No.	Description	Pg. No.	Ref. No.	Qty.	Part No.	Description	Pg. No.	Ref. No.	Qty.
3218-3	Jam Nut	15	7	1	3253-5	Lock Washer	3	11	8
3218-3	Jam Nut	8	20	2	3253-5	Lock Washer	4	10	2
3218-4	Jam Nut	13	7	3	3253-5	Lock Washer	6	18	1
3218-5	Jam Nut	15	10	3	3253-5	Lock Washer	8	9	2
3218-5	Jam Nut	19	8	4	3253-5	Lock Washer	9	9	2
3218-6	Jam Nut	8	5	1	3253-6	Lock Washer	13	8	1
3218-6	Jam Nut	9	6	1	3253-6	Lock Washer	15	27	4
3218-7	Jam Nut	17	17	10	3253-7	Lock Washer	1	16	8
3219-3	Hex Nut	5	9	1	3253-7	Lock Washer	10	7	2
3219-9	Hex Nut	17	20	10	3253-7	Lock Washer	14	11	3
322-12	Capscrew - Hex Hd.	2	32	4	3253-7	Lock Washer	16	41	2
322-3	Capscrew - Hex Hd.	18	2	9	3253-7	Lock Washer	17	4	6
322-5	Capscrew - Hex Hd.	15	16	1	3253-7	Lock Washer	19	7	6
322-5	Capscrew - Hex Hd.	20	4	6	3253-7	Lock Washer	6	8	2
322-6	Capscrew - Hex Hd.	15	13	2	3253-7	Lock Washer	7	4	1
322-6	Capscrew - Hex Hd.	3	20	4	3253-8	Lock Washer	11	8	1
3220-3	Jam Nut	5	8	2	3253-8	Lock Washer	8	4	1
3220-3	Jam Nut	7	7	3	3253-8	Lock Washer	9	5	1
3220-7	Jam Nut	14	7	1	3256-2	Flat Washer	18	26	2
323-10	Capscrew - Hex Hd.	1	3	4	3256-2	Flat Washer	3	15	2
323-10	Capscrew - Hex Hd.	3	28	2	3256-2	Flat Washer	5	15	2
323-10	Capscrew - Hex Hd.	4	8	1	3256-26	"SAE" Flat Washer	17	33	8
323-11	Capscrew - Hex Hd.	14	28	3	3256-26	"SAE" Flat Washer	7	3	1
323-11	Capscrew - Hex Hd.	8	17	1	3256-27	"SAE" Flat Washer	8	3	1
323-6	Capscrew - Hex Hd.	1	19	4	3256-27	"SAE" Flat Washer	9	4	1
323-6	Capscrew - Hex Hd.	15	19	2	3256-28	"SAE" Flat Washer	14	21	1
323-6	Capscrew - Hex Hd.	3	30	2	3256-3	Flat Washer	18	3	9
323-6	Capscrew - Hex Hd.	8	8	2	3256-3	Flat Washer	2	33	4
323-6	Capscrew - Hex Hd.	9	8	2	3256-3	Flat Washer	5	17	2
323-7	Capscrew - Hex Hd.	18	22	8	3256-4	Flat Washer	1	9	6
323-7	Capscrew - Hex Hd.	3	8	2	3256-4	Flat Washer	10	11	2
323-7	Capscrew - Hex Hd.	4	17	1	3256-4	Flat Washer	11	14	3
323-8	Capscrew - Hex Hd.	10	10	2	3256-4	Flat Washer	12	5	22
323-8	Capscrew - Hex Hd.	3	9	4	3256-4	Flat Washer	15	3	2
323-8	Capscrew - Hex Hd.	6	16	1	3256-4	Flat Washer	17	12	10
323-9	Capscrew - Hex Hd.	15	2	1	3256-4	Flat Washer	18	11	16
323-9	Capscrew - Hex Hd.	17	28	7	3256-4	Flat Washer	3	10	20
3230-2	Carriage Bolt	16	43	1	3256-4	Flat Washer	4	9	12
3231-10	Carriage Bolt	17	11	2	3256-4	Flat Washer	5	3	5
3231-2	Carriage Bolt	18	20	2	3256-4	Flat Washer	6	17	1
325-12	Capscrew - Hex Hd.	1	15	8	3256-4	Flat Washer	7	11	3
325-5	Capscrew - Hex Hd.	7	5	1	3256-4	Flat Washer	8	19	1
325-6	Capscrew - Hex Hd.	14	9	3	3256-42	Flat Washer	19	13	2
325-6	Capscrew - Hex Hd.	15	23	2	3256-5	Flat Washer	13	6	8
325-6	Capscrew - Hex Hd.	17	2	6	3256-5	Flat Washer	7	19	3
325-7	Capscrew - Hex Hd.	10	5	2	3256-6	Flat Washer	10	6	2
325-7	Capscrew - Hex Hd.	19	3	2	3256-6	Flat Washer	11	18	2
325-7	Capscrew - Hex Hd.	6	6	2	3256-6	Flat Washer	14	10	3
325-8	Capscrew - Hex Hd.	19	9	4	3256-6	Flat Washer	15	11	6
3253-3	Lock Washer	18	27	2	3256-6	Flat Washer	17	3	4
3253-3	Lock Washer	3	16	2	3256-6	Flat Washer	19	4	20
3253-4	Lock Washer	15	14	3	3256-6	Flat Washer	6	7	2
3253-4	Lock Washer	18	4	9	3256-6	Flat Washer	8	12	6
3253-4	Lock Washer	20	5	6	3256-6	Flat Washer	9	12	5
3253-4	Lock Washer	2	34	4	3256-7	Flat Washer	11	6	3
3253-4	Lock Washer	3	19	4	327-14	Capscrew - Hex Hd.	11	4	1
3253-5	Lock Washer	1	8	6	327-6	Capscrew - Hex Hd.	8	6	1
3253-5	Lock Washer	10	12	2	327-6	Capscrew - Hex Hd.	9	2	1
3253-5	Lock Washer	14	19	3	3272-11	Cotter Pin	5	16	2
3253-5	Lock Washer	15	20	2	3272-21	Cotter Pin	11	3	1
3253-5	Lock Washer	17	13	6	3272-23	Cotter Pin	15	34	1
3253-5	Lock Washer	18	6	17	3272-23	Cotter Pin	6	14	3

\* Not illustrated

# PART NUMBER INDEX (Continued)

Part No.	Description	Pg. No.	Ref. No.	Qty.	Part No.	Description	Pg. No.	Ref. No.	Qty.
3272-23	Cotter Pin	7	17	1	48-005-0371	Lower Pivot Assembly	17	21	2
3272-25	Cotter Pin	14	23	1	48-005-0381	Upper Pivot Arm Bracket	17	19	2
328-23	Capscrew - Hex Hd.	17	30	2	48-005-0561	Cylinder Safety Stop	17	10	2
3296-39	Lock Nut	1	5	3	48-005-0571	Cylinder Adj. Pivot	17	25	2
3296-39	Lock Nut	11	11	1	48-005-0591	Reel Lift Tube Assembly	8	11	1
3296-39	Lock Nut	17	34	3	48-005-0591	Reel Lift Tube Assembly	9	15	1
3296-39	Lock Nut	3	17	2	48-005-0611	Idler Arm	11	1	1
3296-48	Lock Nut	7	20	3	48-005-0621	Foot Pedal	5	1	1
48-002-0101	Breather Cap	21	19	1	48-005-0641	Tow Valve Handle	21	12	1
48-002-5441	Idler Sprocket Assembly	6	*	1	48-005-0641	Tow Valve Handle	3	*	1
48-002-5441	Idler Sprocket Assembly	7	*	1	48-005-0671	Brake Pedal	15	1	1
48-004-1211	Belt Slip Pin	12	6	2	48-005-0712	Gas Tank	4	1	1
48-004-1282	Steering Yoke Gear	14	27	1	48-005-0781	Brake Stop Weldment	15	5	1
48-004-1711	Idler Spring Rod	11	13	1	48-005-0791	Air Cleaner Mount	20	3	1
48-004-1861	Hose Hold Down Bracket	13	3	2	48-005-5781	Reel Lift Rod Assembly-R.H.	9	11	1
48-004-1931	Key	6	12	2	54-002-0011	Steering Column Assembly	14	*	1
48-004-1961	Key	14	6	1	54-004-0531	Hopper Stop Spacer	17	6	4
48-004-2601	Spring Rod	5	11	1	54-004-0861	Door Linkage-Upper	19	2	2
48-004-3052	Upper Arm	17	18	2	54-004-0891	Spacer	17	35	4
48-004-3191	Spacer	4	16	1	54-004-0941	Reel Chain	6	27	1
48-004-3431	Hose Bracket	17	22	2	54-004-1111	Pump Support	3	29	1
48-004-3431	Hose Hold Down Bracket	1	10	3	54-004-1241	Brake Shoe Bracket	15	26	1
48-004-3441	Spacer	17	15	2	54-004-1281	Hopper Floor Seal	18	19	1
48-004-3471	Spacer	11	5	1	54-004-1331	Belt Slip Bracket	12	1	1
48-004-3831	Battery Hold Down	4	12	1	54-004-1401	Muffler Guard	3	4	1
48-004-3881	Spacer	7	2	1	54-004-1412	Wet Leaf Deflector	18	9	1
48-004-3891	Idler Spring Rod	7	10	1	54-004-1421	Rubber Flap Mount	18	18	1
48-004-4111	Fuel Line	4	6	1	54-004-1431	Hopper Flap	18	21	1
48-004-4641	Peep Hole Cover	18	17	1	54-004-1452	Air Cleaner Base	20	2	1
48-004-4651	Sector Spacer	14	16	3	54-004-1461	Cap	20	14	1
48-004-4831	Hose Clamp	17	29	1	54-004-1501	Steering Shaft	14	3	1
48-004-4921	Hose Assembly	21	10	1	54-004-1701	Hose	20	13	1
48-004-4931	Hose Assembly	21	23	1	54-005-0093	Hopper	18	1	1
48-004-5062	Engine Adaptor	3	18	1	54-005-0122	High Lift Hopper Door	19	1	1
48-004-5071	Key	3	25	1	54-005-0131	Reel Lift Assembly	8	7	1
48-004-5131	PVK80 Rubber	4	7	2	54-005-0131	Reel Lift Assembly	9	7	1
48-004-5521	Cessna Pump Spacer	3	26	1	54-005-0161	Dust Shield Assembly	18	8	1
48-004-5841	Reel Plate Spacer	8	2	1	54-005-0172	Main Lift Arm	17	1	1
48-004-5841	Reel Plate Spacer	9	3	1	54-005-0214	Main Frame	1	1	1
48-004-6101	Hopper Box Spacer	19	6	4	54-005-0231	Seat Bracket	1	2	1
48-004-6241	Brake Stop Plate	15	18	1	54-005-0242	Steering Yoke Assembly	14	13	1
48-004-6271	Spacer	12	3	2	54-005-0251	Axle	15	22	1
48-004-6311	Hopper Box Spacer	19	17	2	54-005-0261	Brake Mount	15	21	1
48-004-6391	Flywheel Guard	3	13	1	54-005-0282	Front Wheel	15	24	1
48-004-6631	Break Pedal Stop	16	42	1	54-005-1521	Steering Column Assembly	14	2	1
48-005-0121	Spring Tension Adjustment	11	10	1	54-005-1611	Belt Guard	12	7	1
48-005-0162	Idler Cover	7	18	1	54-005-1611	Belt Guard	13	1	1
48-005-0172	Reel Plate Assembly-R.H.	10	3	1	54-005-1621	Control Rod	5	5	1
48-005-0172	Reel Plate Assembly-R.H.	9	1	1	66-004-1621	Air Deflector	1	18	1
48-005-0182	Reel Plate Assembly-L.H.	6	4	1	66-004-3211	Key	10	16	1
48-005-0182	Reel Plate Assembly-L.H.	8	1	1	66-005-0231	Front Reel Assembly	10	2	1
48-005-0191	Idler Shaft Assembly	7	1	1	66-005-0231	Front Reel Assembly	6	2	1
48-005-0222	Handle	8	16	1	66-005-0242	Rear Reel Assembly	10	1	1
48-005-0231	Reel Lift Rod Assembly-L.H.	8	14	1	66-005-0242	Rear Reel Assembly	6	1	1
48-005-0241	Pump Control Arm Assembly	5	10	1	74-0720	Manual Tube	18	24	1
48-005-0331	Hopper Door Cyl. Pin	19	11	1	82-004-1171	Key	10	19	1
48-005-0341	Hopper Door Cyl. Pin	19	10	1	93-004-0511	Spacer	20	12	1

\* Not Illustrated

## PRODUCT CHANGES

In an effort to make improvements available to TORO owners as quickly as possible minor changes are incorporated into Toro's products from time to time that do not become immediately shown in the Parts Catalog. If such a change has been made in your unit which is not reflected in your manual see your TORO Distributor or an Authorized Service Dealer for information and part numbers.

## IDENTIFICATION & ORDERING

### MODEL AND NUMBERS

The 5400HL has two identification numbers; a model number and a serial number. The two numbers are stamped on a plate which is located on the seat bracket. In any correspondence concerning the 5400HL, supply model and serial numbers to assure that correct information and replacement parts are obtained.

To order replacement parts from your TORO Distributor or an Authorized Service Dealer, supply the following information:

1. Model and serial number of the 5400HL.
2. Part number description and the quantity of part (s) desired.

NOTE: Do not order by reference number if a parts catalog is being used: use the PART NUMBER.

## TABLE OF CONTENTS

Description	Page	Description	Page
Main Frame Assembly .....	1 - 2	Belt Slip Bracket .....	12
Engine Mounting .....	3	Belt Guard & Hose Brackets .....	13
Gas Tank & Battery Hold Down .....	4	Steering Assembly .....	14
Foot Pedal & Pump Control Rod Assembly .....	5	Brake System .....	15 - 16
Sweeper Reels & Timing Chain Assembly .....	6	Hopper Lift Arm Assembly .....	17
Chain Idler & Guard Assembly .....	7	Hopper Assembly .....	18
Reel Lift Assembly-L.H. ....	8	Hopper Door Assembly .....	19
Reel Lift Assembly-R.H. ....	9	Donaldson Air Cleaner	
Belt Drive Assembly .....	10	(Optional) - Model 44030 .....	20
Belt Idler Assembly .....	11	5400HL - Hydraulic Schematic .....	21 - 22
		Parts Index .....	23 - 26

