

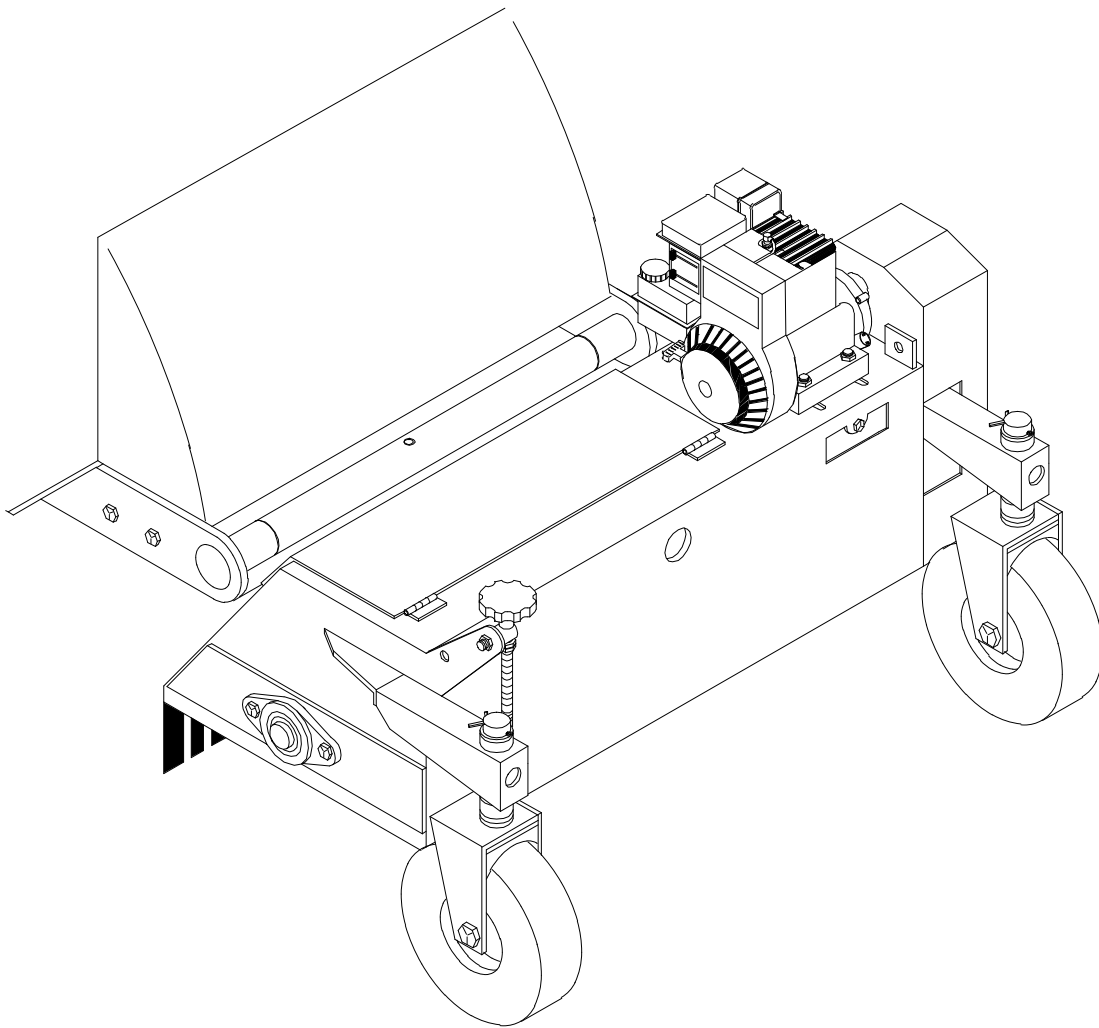


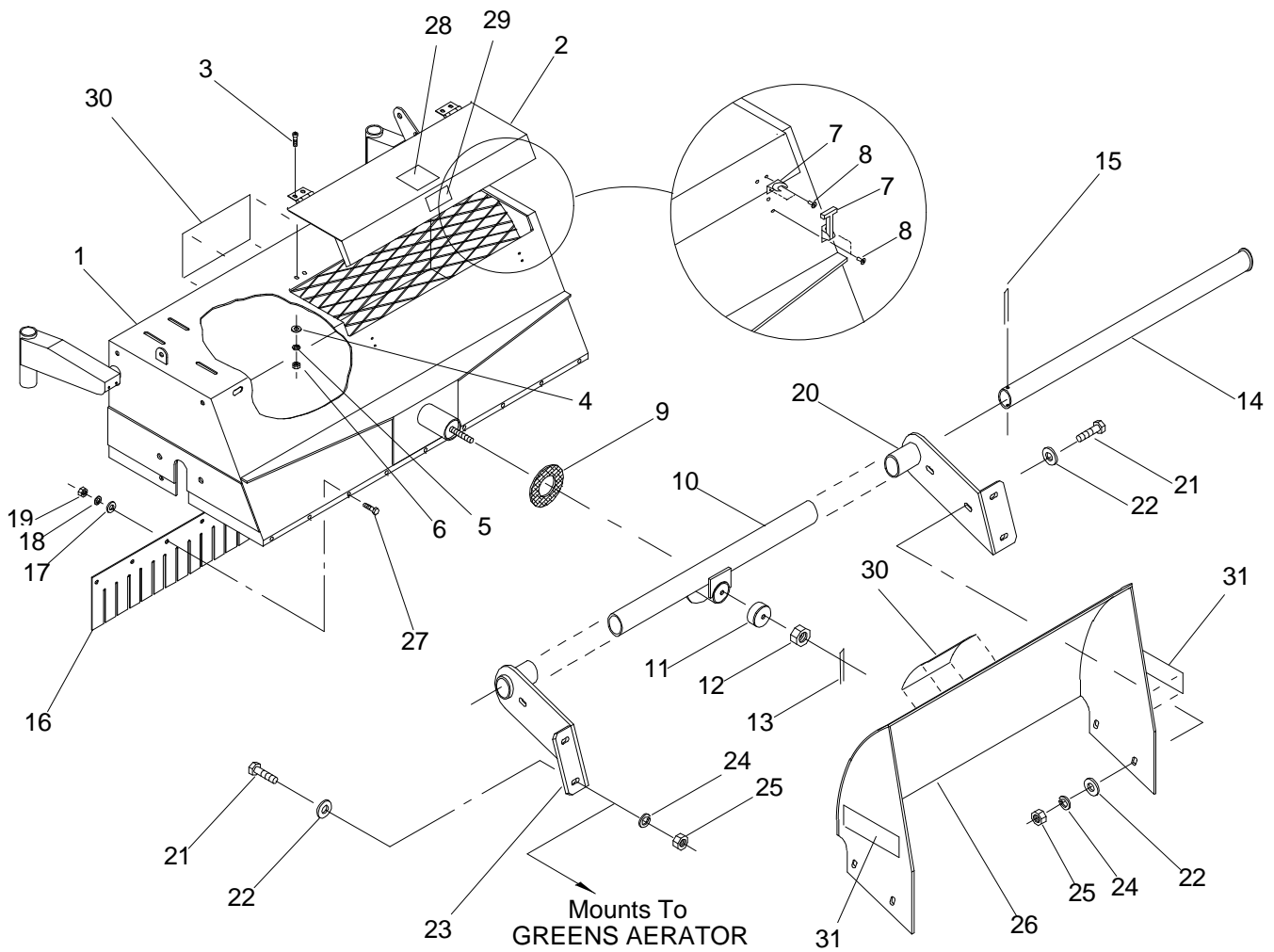
MODEL NO. 44894 - 20101 & UP

**PARTS
CATALOG**

PLUG PULVERIZER 2561

Attachment For Greens Aerator



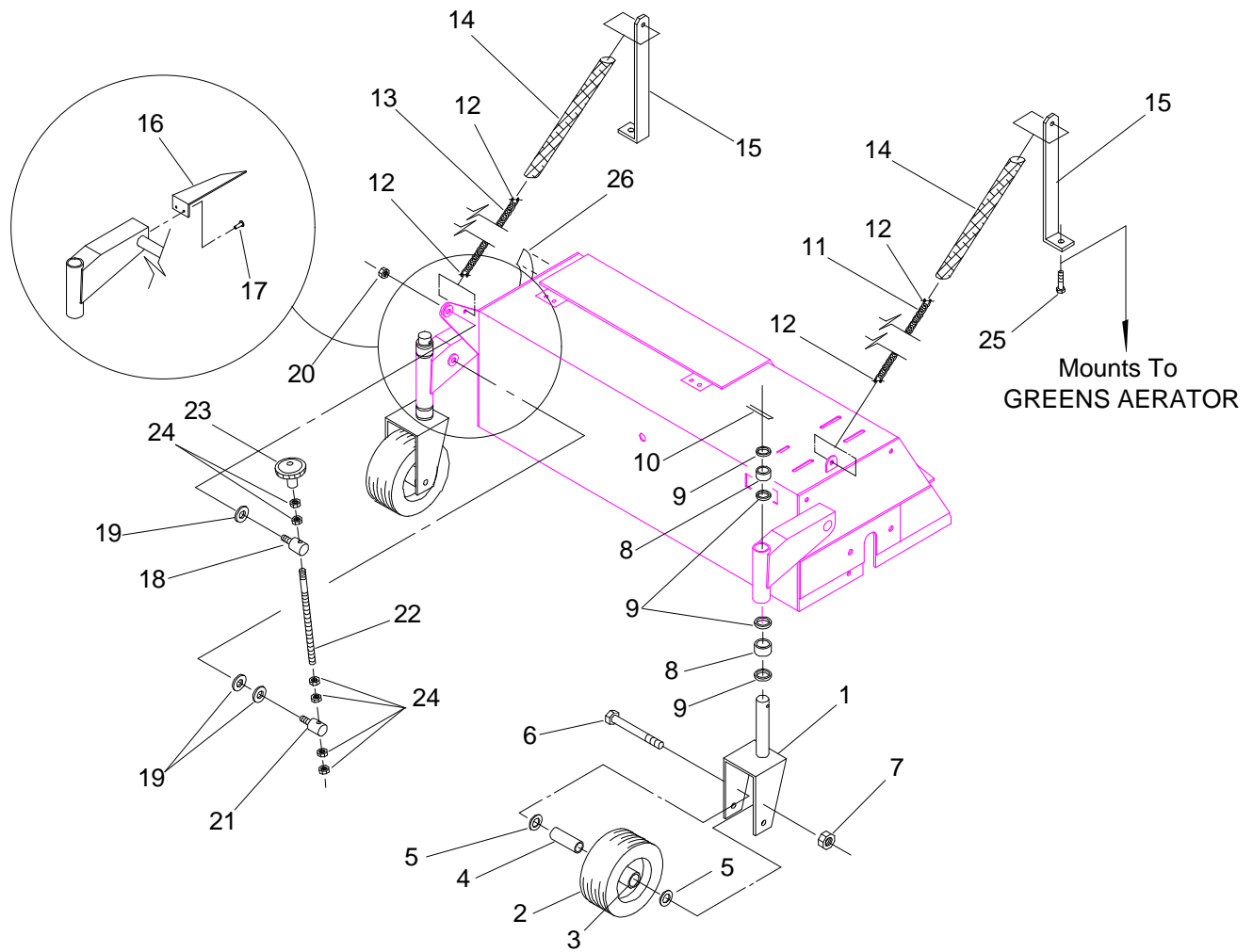


FRAME & PIVOT ASSEMBLY

561-001

| Ref. No. | Part No. | Description | No. Used |
|----------|-------------|--|----------|
| 1. | 56-105-0103 | Main Frame | 1 |
| 2. | 56-105-0111 | Lid | 1 |
| 3. | 01-158-0150 | Capscrew - Socket Hd., #10 - 24 x 1/2" | 4 |
| 4. | 01-166-0300 | Flat Washer, 3/16" | 4 |
| 5. | 01-166-0310 | Lock Washer, 3/16" | 4 |
| 6. | 01-188-0324 | Hex Nut, 3/16" - 24 | 4 |
| 7. | 01-270-1350 | Latch | 2 |
| 8. | 01-161-0060 | Pop Rivet | 8 |
| 9. | 56-104-0671 | Pivot Washer, 1/4" UHMW | 1 |
| 10. | 56-105-0121 | Pivot Mount | 1 |
| 11. | 56-105-0131 | Pivot Cap | 1 |
| 12. | 01-190-0813 | Slotted Nut, 1/2" - 13 | 1 |
| 13. | 01-151-0100 | Cotter Pin, 3/16" x 1" | 1 |
| 14. | 56-105-0141 | Inside Pivot Tube | 1 |
| 15. | 01-151-0160 | Cotter Pin, 3/16" x 3" | 1 |
| 16. | 56-104-0681 | Rubber Deflector | 1 |

| Ref. No. | Part No. | Description | No. Used |
|----------|-------------|--|----------|
| 17. | 01-166-0500 | Flat Washer, 5/16" | 9 |
| 18. | 01-166-0510 | Lock Washer, 5/16" | 9 |
| 19. | 01-188-0518 | Hex Nut, 5/16" - 18 | 9 |
| 20. | 56-105-0151 | Pivot Bracket-L.H. | 1 |
| 21. | 01-188-0610 | Capscrew - Hex Hd., 3/8" - 16 x 1-1/4" | 8 |
| 22. | 01-166-0600 | Flat Washer, 3/8" | 12 |
| 23. | 56-105-0161 | Pivot Bracket-R.H. | 1 |
| 24. | 01-166-0610 | Lock Washer, 3/8" | 8 |
| 25. | 01-188-0616 | Hex Nut, 3/8" - 16 | 8 |
| 26. | 56-105-0171 | Cover | 1 |
| 27. | 01-178-0508 | Capscrew - Hex Hd., 5/16" - 18 x 1" | 9 |
| 28. | 01-506-0370 | Decal - Danger | 1 |
| 29. | 01-506-0390 | Decal - Danger | 1 |
| 30. | 01-506-0480 | Decal - Toro | 2 |
| 31. | 01-506-0820 | Decal - Plug Pulverizer 2561 | 2 |



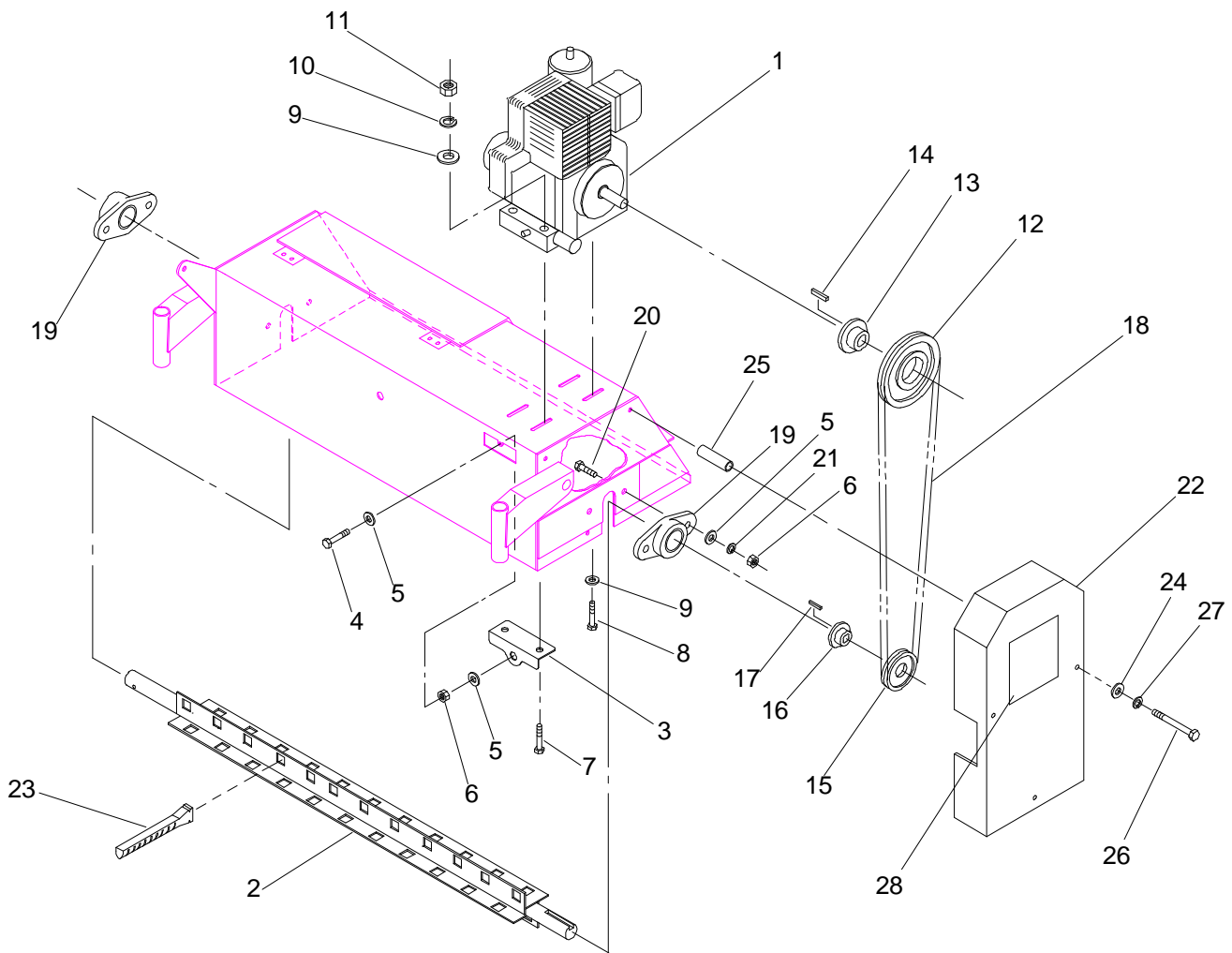
WHEEL & HEIGHT ADJ. ASSEMBLY

561-002

| Ref. No. | Part No. | Description | No. Used |
|----------|-------------|--|----------|
| 1. | 56-105-0201 | Wheel Mount | 2 |
| 2. | 01-269-0710 | Tire | 2 |
| * | 01-269-0720 | Tube | 2 |
| 3. | 01-269-0730 | Wheel | 2 |
| * | 01-111-0050 | Bearing | 4 |
| 4. | 01-269-1200 | Wheel Bushing | 2 |
| 5. | 01-168-1210 | Machinery Bushing, 3/4" ID x 10 Ga. | 4 |
| 6. | 01-158-1260 | Capscrew - Hex Hd., 1/2" - 13 x 5" | 2 |
| 7. | 01-189-0813 | Lock Nut, 1/2" - 13 | 2 |
| 8. | 56-104-0731 | Spacer, 1/2" Lg. | 4 |
| 9. | 01-168-1618 | Machinery Bushing, 1" ID x 18 Ga. | 8 |
| 10. | 01-151-0020 | Cotter Pin, 3/16" x 2" | 2 |
| 11. | 56-104-0341 | Chain (21 Links) | 1 |

| Ref. No. | Part No. | Description | No. Used |
|----------|-------------|---|----------|
| 12. | 01-170-0130 | Anchor Shackle | 4 |
| 13. | 56-104-0331 | Chain (24 Links) | 1 |
| 14. | 01-205-0130 | Cordura, 36" Lg. | 2 |
| 15. | 56-104-0761 | Chain Bracket | 2 |
| 16. | 56-104-0441 | Pointer | 1 |
| 17. | 01-161-0060 | Pop Rivet | 2 |
| 18. | 56-104-0301 | Height Adj. Lug (short) | 1 |
| 19. | 01-166-0800 | Flat Washer, 1/2" | 3 |
| 20. | 01-189-0813 | Lock Nut, 1/2" - 13 | 1 |
| 21. | 56-104-0311 | Height Adj. Lug (long) | 1 |
| 22. | 56-104-0321 | Adjustment Rod | 1 |
| 23. | 01-256-0200 | Knob | 1 |
| 24. | 01-191-0813 | Jam Nut, 1/2" - 13 | 6 |
| 25. | 01-178-0806 | Capscrew - Hex Hd., 1/2" - 13 x 3/4" | 2 |
| 26. | 01-506-0200 | Decal - Height Adj. | 1 |

* Not Illustrated



REEL & ENGINE MOUNTING

561-003

| Ref. No. | Part No. | Description | No. Used |
|----------|-------------|--|----------|
| 1. | 01-270-1200 | Engine, 5 HP Briggs & Stratton | 1 |
| 2. | 42-005-0162 | Finger Reel | 1 |
| 3. | 56-105-0191 | Pull Bracket | 1 |
| 4. | 01-178-0814 | Capscrew - Hex Hd., 1/2" - 13 x 1-3/4" | 1 |
| 5. | 01-166-0800 | Flat Washer, 1/2" | 6 |
| 6. | 01-188-0813 | Hex Nut, 1/2" - 13 | 5 |
| 7. | 01-178-0516 | Capscrew - Hex Hd., 5/16" - 18 x 2" | 2 |
| 8. | 01-178-0514 | Capscrew - Hex Hd., 5/16" - 18 x 1-3/4" | 2 |
| 9. | 01-166-0500 | Flat Washer, 5/16" | 6 |
| 10. | 01-166-0510 | Lock Washer, 5/16" | 4 |
| 11. | 01-188-0518 | Hex Nut, 5/16" - 18 | 4 |
| 12. | 01-260-1540 | Sheave, 2/3V - 6.9SDS | 1 |
| 13. | 01-260-1110 | Bushing, 3/4" SDS | 1 |
| 14. | 48-004-1961 | Key, 3/16" Sq. x 3/4" | 1 |
| 15. | 01-260-1020 | Sheave, 2/3V - 3.35SH | 1 |

| Ref. No. | Part No. | Description | No. Used |
|----------|-------------|---|----------|
| 16. | 01-260-0240 | Bushing, 1-1/4" SH | 1 |
| 17. | 82-004-1171 | Key, 1/4" Sq. x 1-1/8" | 1 |
| 18. | 01-264-0820 | Belt, 2/3V x 475 | 1 |
| 19. | 01-100-0170 | Bearing, 1-1/4" | 2 |
| 20. | 01-178-0816 | Capscrew - Hex Hd., 1/2" - 13 x 2" | 4 |
| 21. | 01-166-0810 | Lock Washer, 1/2" | 4 |
| 22. | 56-105-0181 | Belt Guard | 1 |
| 23. | 01-279-0010 | Finger | 46 |
| 24. | 01-166-0600 | Flat Washer, 3/8" | 3 |
| 25. | 56-104-0541 | Guard Spacer, 4.125" Lg. | 3 |
| 26. | 01-178-0644 | Capscrew - Hex Hd., 3/8" - 16 x 5-1/2" | 3 |
| 27. | 01-166-0610 | Lock Washer, 3/8" | 3 |
| 28. | 01-506-0040 | Decal - Danger | 1 |

PART NUMBER INDEX

| Part No. | Description | Pg. No. | Ref. No. | Qty. | Part No. | Description | Pg. No. | Ref. No. | Qty. |
|-------------|-----------------------|---------|----------|------|-------------|------------------------------|---------|----------|------|
| 01-100-0170 | Bearing | 4 | 19 | 2 | 01-260-0240 | Bushing | 4 | 16 | 1 |
| 01-111-0050 | Bearing | 3 | * | 4 | 01-260-1020 | Sheave | 4 | 15 | 1 |
| 01-151-0020 | Cotter Pin | 3 | 10 | 2 | 01-260-1110 | Bushing | 4 | 13 | 1 |
| 01-151-0100 | Cotter Pin | 2 | 13 | 1 | 01-260-1540 | Sheave | 4 | 12 | 1 |
| 01-151-0160 | Cotter Pin | 2 | 15 | 1 | 01-264-0820 | Belt | 4 | 18 | 1 |
| 01-158-0150 | Capscrew - Socket Hd. | 2 | 3 | 4 | 01-269-0710 | Tire | 3 | 2 | 2 |
| 01-158-1260 | Capscrew - Hex Hd. | 3 | 6 | 2 | 01-269-0720 | Tube | 3 | * | 2 |
| 01-161-0060 | Pop Rivet | 2 | 8 | 8 | 01-269-0730 | Wheel | 3 | 3 | 2 |
| 01-161-0060 | Pop Rivet | 3 | 17 | 2 | 01-269-1200 | Wheel Bushing | 3 | 4 | 2 |
| 01-166-0300 | Flat Washer | 2 | 4 | 4 | 01-270-1200 | Engine | 4 | 1 | 1 |
| 01-166-0310 | Lock Washer | 2 | 5 | 4 | 01-270-1350 | Latch | 2 | 7 | 2 |
| 01-166-0500 | Flat Washer | 2 | 17 | 9 | 01-279-0010 | Finger | 4 | 23 | 46 |
| 01-166-0500 | Flat Washer | 4 | 9 | 6 | 01-506-0040 | Decal - Danger | 4 | 28 | 1 |
| 01-166-0510 | Lock Washer | 2 | 18 | 9 | 01-506-0200 | Decal - Height Adj. | 3 | 26 | 1 |
| 01-166-0510 | Lock Washer | 4 | 10 | 4 | 01-506-0370 | Decal - Danger | 2 | 28 | 1 |
| 01-166-0600 | Flat Washer | 2 | 22 | 12 | 01-506-0390 | Decal - Danger | 2 | 29 | 1 |
| 01-166-0600 | Flat Washer | 4 | 24 | 3 | 01-506-0480 | Decal - Toro | 2 | 30 | 2 |
| 01-166-0610 | Lock Washer | 2 | 24 | 8 | 01-506-0820 | Decal - Plug Pulverizer 2561 | 2 | 31 | 2 |
| 01-166-0610 | Lock Washer | 4 | 27 | 3 | 42-005-0162 | Finger Reel | 4 | 2 | 1 |
| 01-166-0800 | Flat Washer | 3 | 19 | 3 | 48-004-1961 | Key - Sq. | 4 | 14 | 1 |
| 01-166-0800 | Flat Washer | 4 | 5 | 6 | 56-104-0301 | Height Adj. Lug (short) | 3 | 18 | 1 |
| 01-166-0810 | Lock Washer | 4 | 21 | 4 | 56-104-0311 | Height Adj. Lug (long) | 3 | 21 | 1 |
| 01-168-1210 | Machinery Bushing | 3 | 5 | 4 | 56-104-0321 | Adjustment Rod | 3 | 22 | 1 |
| 01-168-1618 | Machinery Bushing | 3 | 9 | 8 | 56-104-0331 | Chain (24 Links) | 3 | 13 | 1 |
| 01-170-0130 | Anchor Shackles | 3 | 12 | 4 | 56-104-0341 | Chain (21 Links) | 3 | 11 | 1 |
| 01-178-0508 | Capscrew - Hex Hd. | 2 | 27 | 9 | 56-104-0441 | Pointer | 3 | 16 | 1 |
| 01-178-0514 | Capscrew - Hex Hd. | 4 | 8 | 2 | 56-104-0541 | Guard Spacer | 4 | 25 | 3 |
| 01-178-0516 | Capscrew - Hex Hd. | 4 | 7 | 2 | 56-104-0671 | Pivot Washer | 2 | 9 | 1 |
| 01-178-0610 | Capscrew - Hex Hd. | 2 | 21 | 8 | 56-104-0681 | Rubber Deflector | 2 | 16 | 1 |
| 01-178-0644 | Capscrew - Hex Hd. | 4 | 26 | 3 | 56-104-0731 | Spacer | 3 | 8 | 4 |
| 01-178-0806 | Capscrew - Hex Hd. | 3 | 25 | 2 | 56-104-0761 | Chain Bracket | 3 | 15 | 2 |
| 01-178-0814 | Capscrew - Hex Hd. | 4 | 4 | 1 | 56-104-0821 | Cordura | 3 | 14 | 2 |
| 01-178-0816 | Capscrew - Hex Hd. | 4 | 20 | 4 | 56-105-0103 | Main Frame | 2 | 1 | 1 |
| 01-188-0324 | Hex Nut | 2 | 6 | 4 | 56-105-0111 | Lid | 2 | 2 | 1 |
| 01-188-0518 | Hex Nut | 2 | 19 | 9 | 56-105-0121 | Pivot Mount | 2 | 10 | 1 |
| 01-188-0518 | Hex Nut | 4 | 11 | 4 | 56-105-0131 | Pivot Cap | 2 | 11 | 1 |
| 01-188-0616 | Hex Nut | 2 | 25 | 8 | 56-105-0141 | Inside Pivot Tube | 2 | 14 | 1 |
| 01-188-0813 | Hex Nut | 4 | 6 | 5 | 56-105-0151 | Pivot Bracket-l.h. | 2 | 20 | 1 |
| 01-189-0813 | Lock Nut | 3 | 20 | 1 | 56-105-0161 | Pivot Bracket-r.h. | 2 | 23 | 1 |
| 01-189-0813 | Lock Nut | 3 | 7 | 2 | 56-105-0171 | Cover | 2 | 26 | 1 |
| 01-190-0813 | Slotted Nut | 2 | 12 | 1 | 56-105-0181 | Belt Guard | 4 | 22 | 1 |
| 01-191-0813 | Jam Nut | 3 | 24 | 6 | 56-105-0191 | Pull Bracket | 4 | 3 | 1 |
| 01-256-0200 | Knob | 3 | 23 | 1 | 56-105-0201 | Wheel Mount | 3 | 1 | 2 |
| | | | | | 82-004-1171 | Key - Sq. | 4 | 17 | 1 |

* Not Illustrated

PRODUCT CHANGES

In an effort to make improvements available to TORO owners as quickly as possible minor changes are incorporated into Toro's products from time to time that do not become immediately shown in the Parts Catalog. If such a change has been made in your unit which is not reflected in your manual see your TORO Distributor or an Authorized Service Dealer for information and part numbers.

IDENTIFICATION & ORDERING

MODEL AND NUMBERS

The Plug Pulverizer 2561 has two identification numbers; a model number and a serial number. The two numbers are stamped on a plate which is located on the main frame. In any correspondence concerning the Plug Pulverizer 2561 supply model and serial numbers to assure that correct information and replacement parts are obtained.

To order replacement parts from your TORO Distributor or an Authorized Service Dealer, supply the following information:

1. Model and serial number of the Plug Pulverizer 2561.
2. Part number description and the quantity of part (s) desired.

NOTE: Do not order by reference number if a parts catalog is being used: use the PART NUMBER.

TABLE OF CONTENTS

| Description | Page | Description |
|--|------|------------------------------------|
| Frame & Pivot Assembly | 2 | |
| Wheel & Height Adj. Assembly | 3 | |
| | | Reel & Engine Mounting 4 |
| | | Part Number Index 5 |

———— NOTES ————

