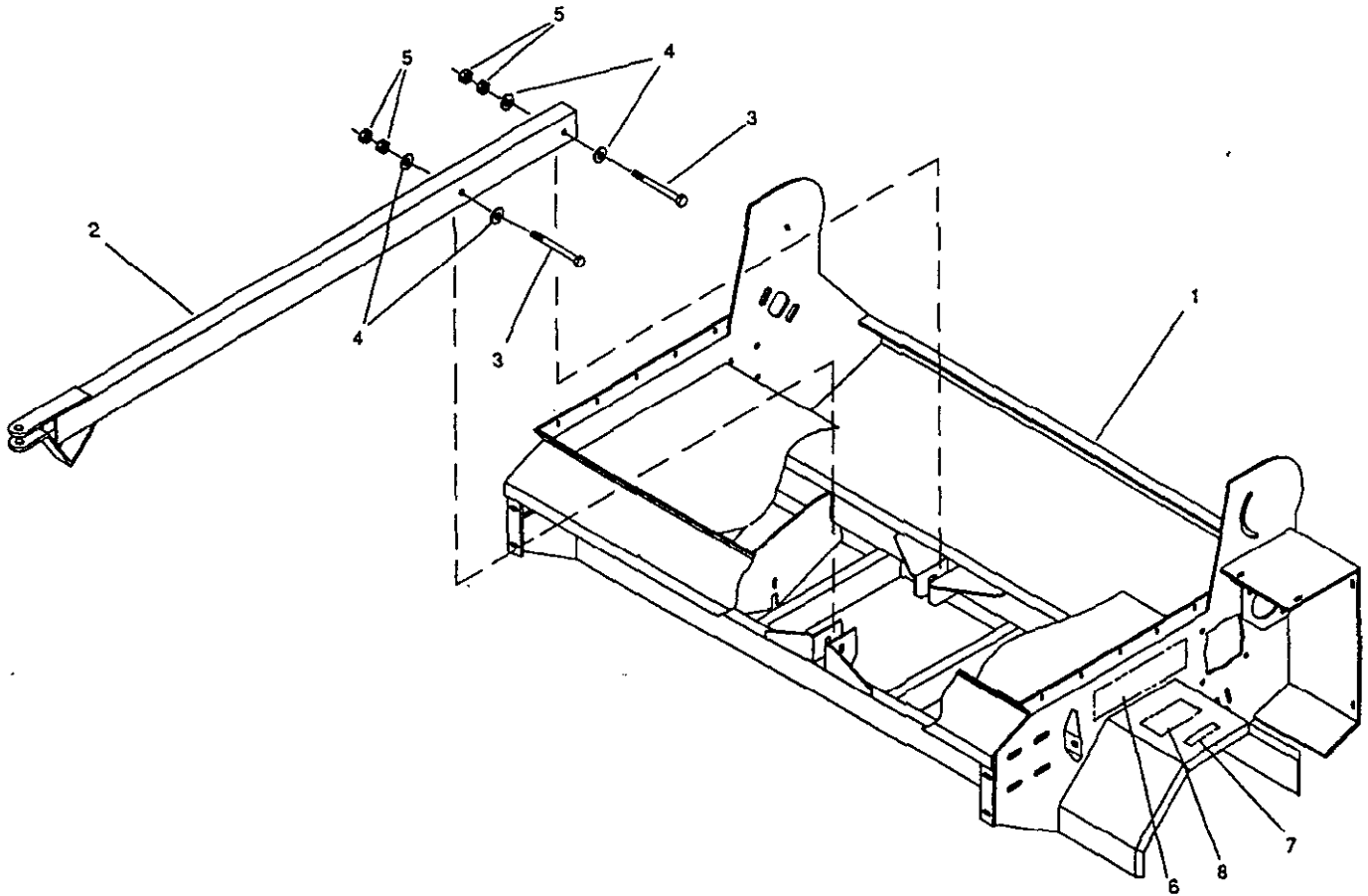




MODEL NO. 44501 - 20101 thru 30380	PARTS CATALOG
TOPDRESSER 2300	

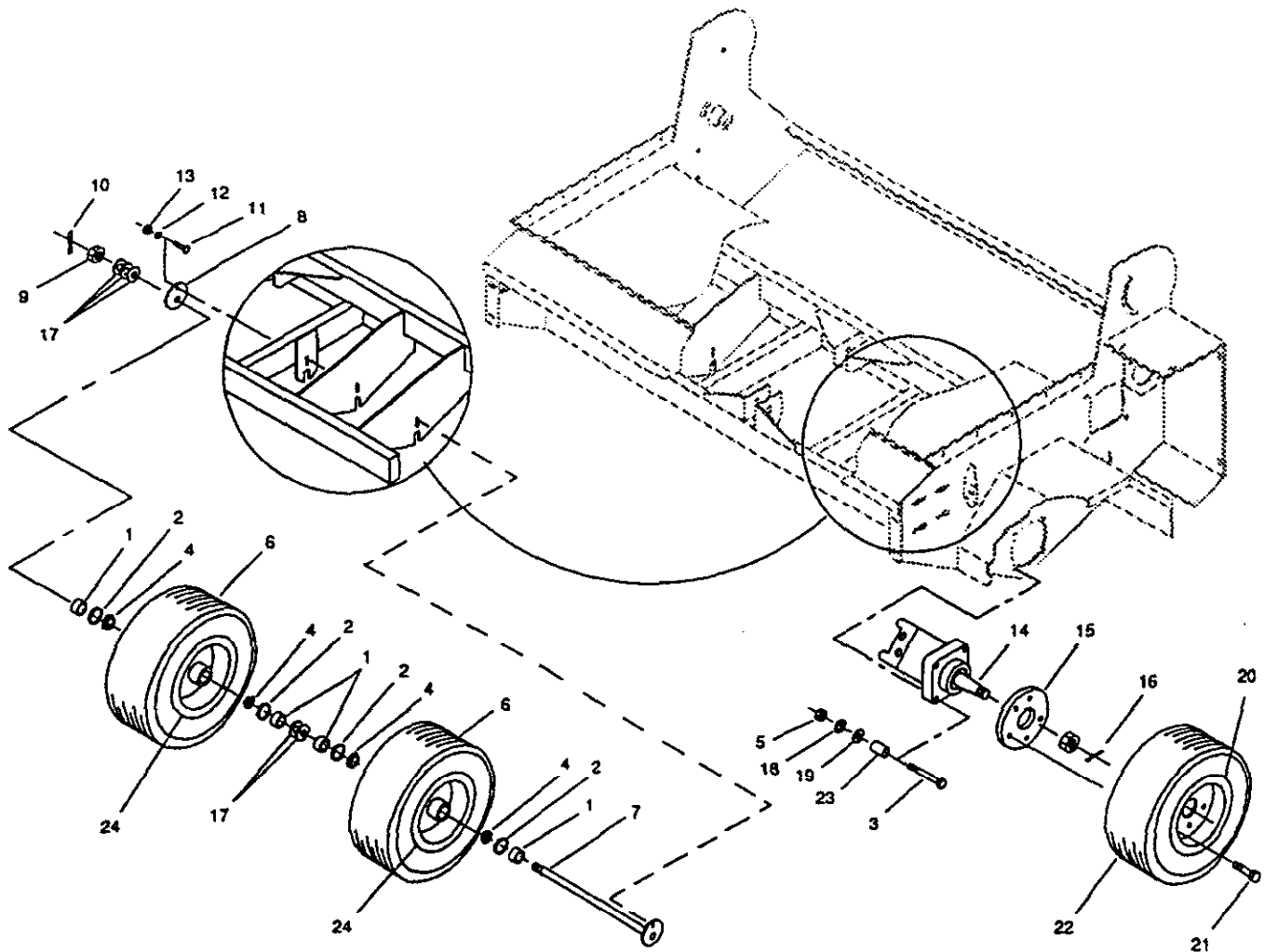


TONGUE ASSEMBLY

23-001

Ref. No.	Part No.	Description	No. Used
1	23-005-0103	Main Frame	1
2	23-005-0161	Hitch	1
3	325-14	Capscrew - Hex Hd.	2
4	3256-6	Flat Washer	4

Ref. No.	Part No.	Description	No. Used
5	3218-5	Jam Nut	4
6	01-506-0690	Decal - Topdresser 2300	2
7	75-5190	Decal - No Riders	2
8	01-506-0240	Decal - Warning	2



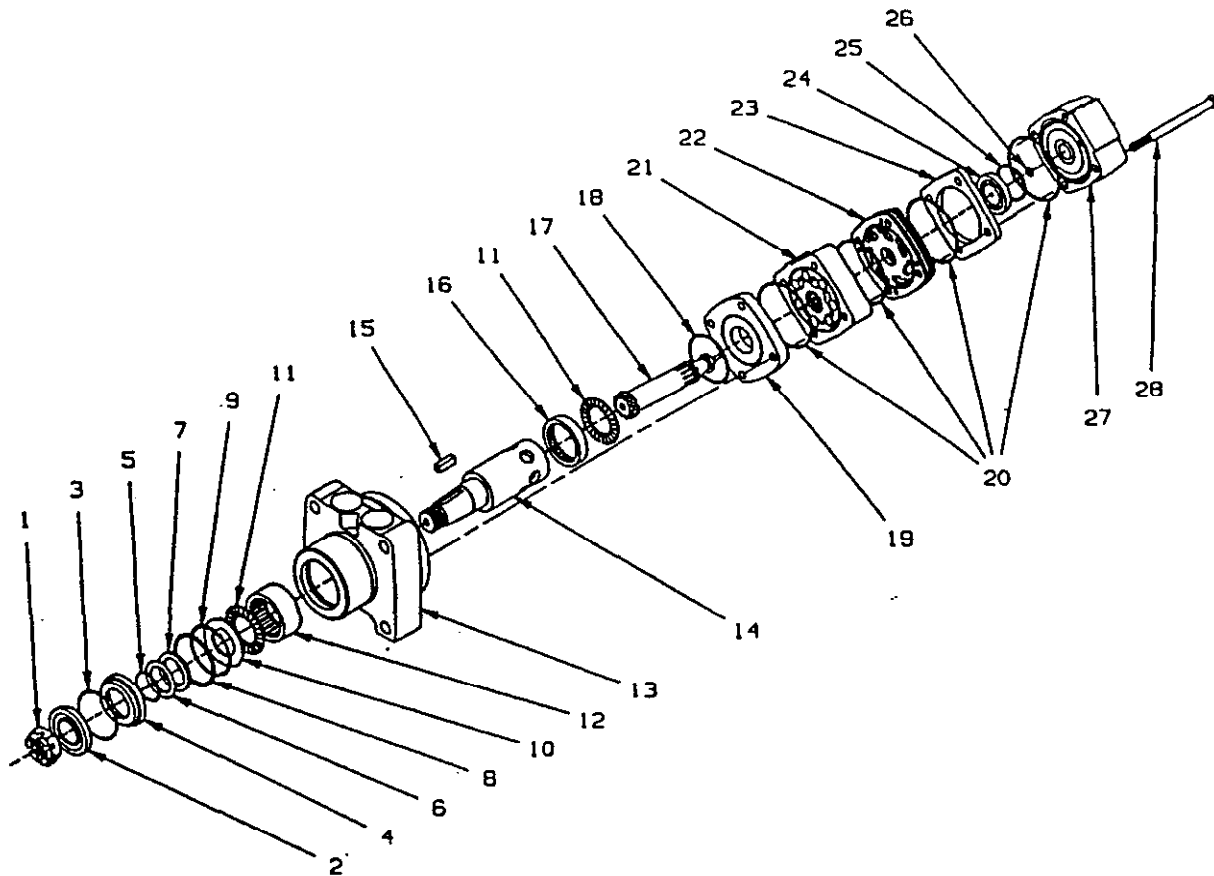
WHEEL ASSEMBLY

23-002

Ref. No.	Part No.	Description	No. Used
1	01-269-0060	Axle Spacer	8
2	01-405-0460	Seal	8
3	325-14	Capscrew - Hex Hd.	8
4	01-102-0130	Bearing Cone	8
5	3217-9	Hex Nut	8
6	01-269-0350	Tire	4
7	23-005-0151	Axle	2
8	23-004-0241	Axle Bracket	2
9	01-190-1210	Slotted Nut	2
10	3272-15	Cotter Pin	2
11	323-6	Capscrew - Hex Hd.	2
12	3253-5	Lock Washer	2
13	3217-7	Hex Nut	2

Ref. No.	Part No.	Description	No. Used
14	01-304-0510	Hydraulic Motor	2
*	01-304-0560	Seal Kit	1
15	01-269-1000	Hub	2
16	01-151-0170	Cotter Pin	2
17	01-168-1210	Machinery Bushing	10
18	3253-7	Lock Washer	8
19	3256-26	"SAE" Flat Washer	8
20	01-269-1020	Wheel	2
21	01-158-1610	Lug Bolt	10
22	01-269-0320	Tire	2
23	23-004-0851	Motor Bolt Spacer	8
24	01-269-0360	Wheel	4

* Not Illustrated



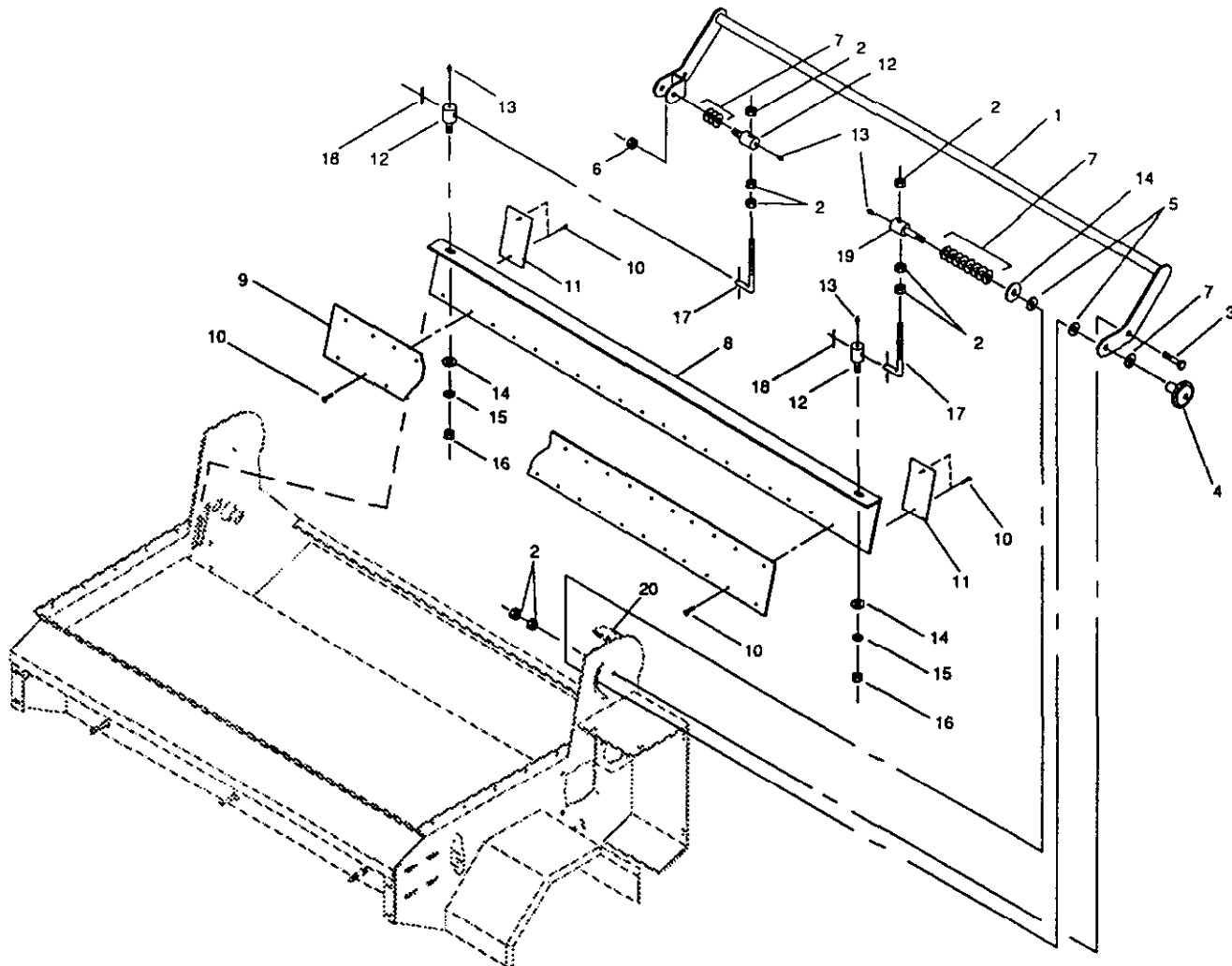
HYDRAULIC MOTOR NO. 01-304-0510

23-009

Ref. No.	Part No.	Description	No. Used
1		Slotted Nut	1
2		Seal - Dust	1
3		Ring - Snap	1
4		Seal - Carrier	1
5		Shim - Backup	1
6		Seal - Backup	1
7		Seal - Shaft	1
8		Shim - Backup	1
9		Seal - Housing, High Press.	1
10		Thrust Washer	1
11	01-304-0660	Thrust Bearing	2
12		Roller Bearing	1
13		Housing	1
14		Shaft	1
15		Key - Shaft	1
16		Roller Bearing	1
17	01-304-0770	Drive Link	1
18		Seal	1
19	01-304-0710	Divider Plate	1
20		Seal - Body	4

Ref. No.	Part No.	Description	No. Used
21	01-304-0780	Rotor Set	1
22	01-304-0730	Manifold	1
23		Commutator Plate	1
24		Commutator	1
25		Seal - Commutator	1
26		Seal	1
27	01-304-0750	End Cover	1
28	01-304-0790	Bolt Set	1
*	01-304-0900	Shaft Kit (Incl. Ref. #1, 14, 15)	1
*	01-304-0560	Seal Kit (Incl. Ref. #2, 3, 5-9, 18, 20, 25, 26)	1
*	01-304-0670	Seal Kit (Incl. Ref. #4, 10)	1
*	01-304-0690	Housing/Bearing Kit (Incl. Ref. #12, 13, 16)	1
*	01-304-0740	Commutator Set (Incl. Ref. #23, 24)	1

* Not illustrated

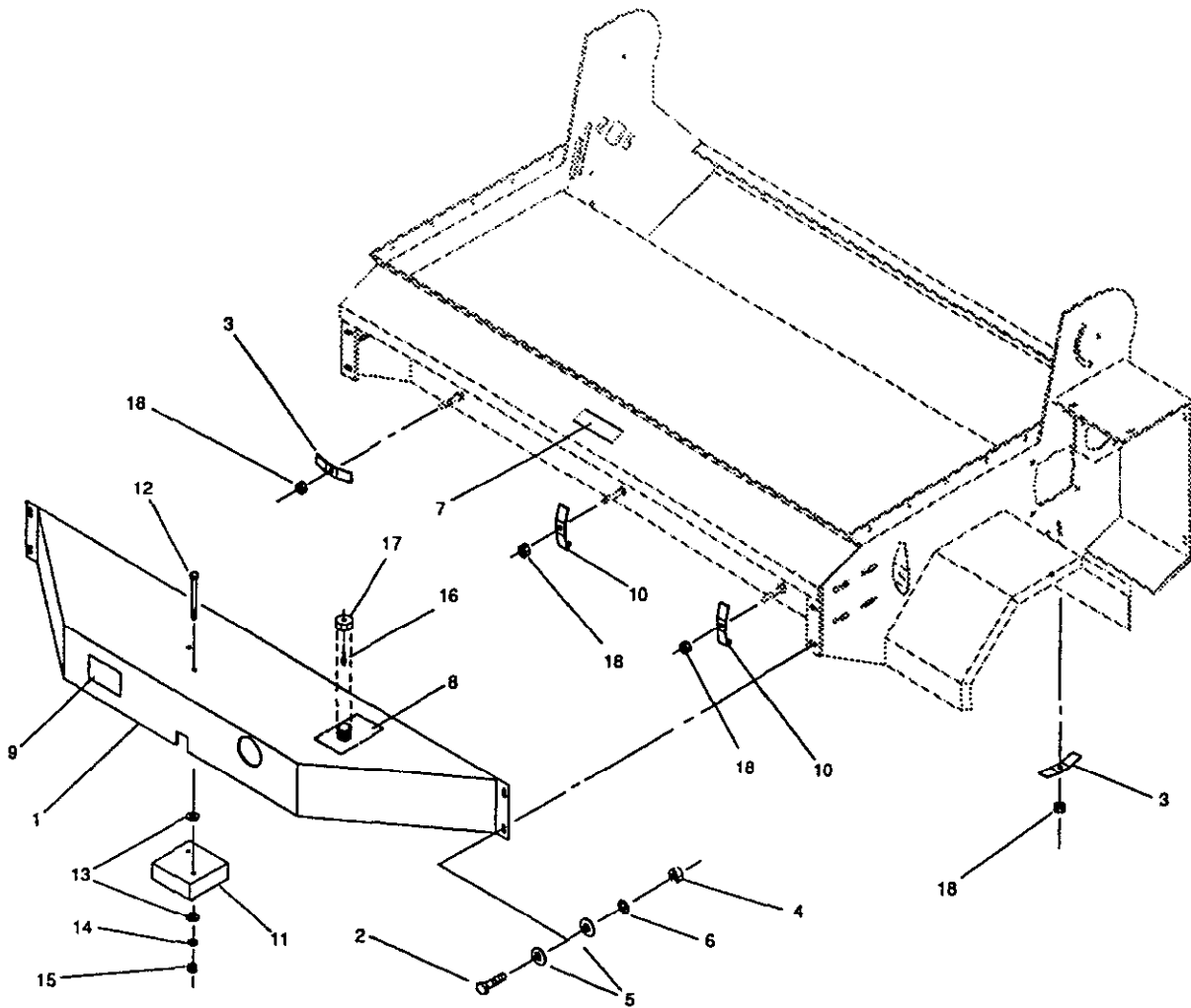


GATE CONTROL ASSEMBLY

23-003

Ref. No.	Part No.	Description	No. Used
1	23-005-0141	Gate Control Arm	1
2	3218-5	Jam Nut	10
3	325-5	Capscrew - Hex Hd.	2
4	01-256-0200	Knob	1
5	23-004-0721	Plastic Washer	2
6	01-189-0813	Lock Nut	1
7	3256-26	"SAE" Flat Washer	11(var)
8	23-004-0991	Gate	1
9	23-004-0221	Gate Seal	1
10	01-161-0090	Pop Rivet	24

Ref. No.	Part No.	Description	No. Used
11	23-004-1041	Slide	2
12	56-104-0301	Adjustment Lug-short	3
13	01-215-0050	Grease Zerk	4
14	3256-6	Flat Washer	3
15	3253-7	Lock Washer	2
16	3217-9	Hex Nut	2
17	23-004-1021	Gate Rod	2
18	3272-11	Cotter Pin	2
19	23-004-1061	Adjustment Lug-long	1
20	01-506-0210	Decal - Height Adjustment	1



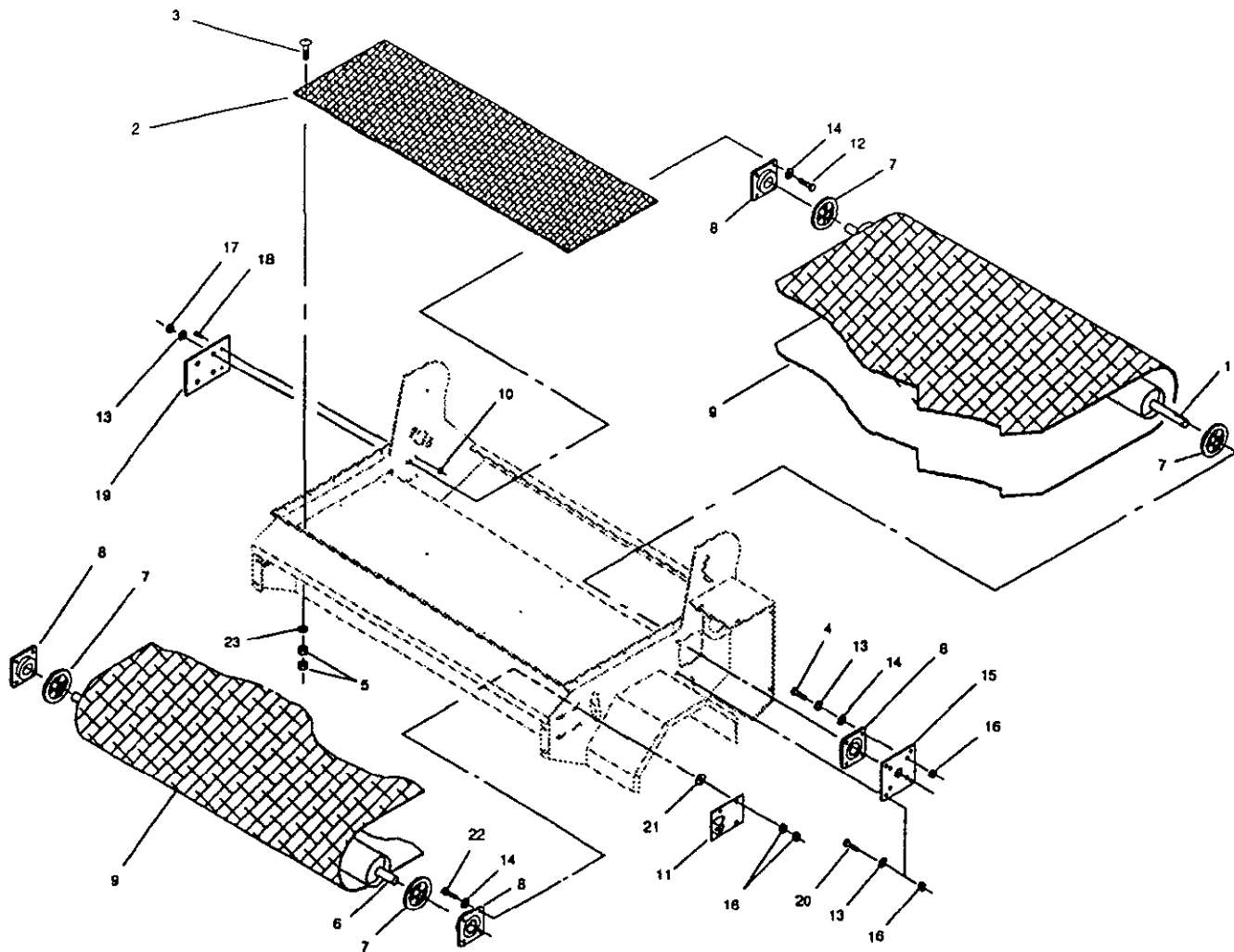
HYDRAULIC TANK ASSEMBLY

23-004

Ref. No.	Part No.	Description	No. Used
1	23-005-0171	Hydraulic Tank	1
2	323-6	Capscrew - Hex Hd.	4
3	48-004-3431	Hose Bracket	2
4	3217-7	Hex Nut	4
5	3256-4	Flat Washer	8
6	3253-5	Lock Washer	4
7	75-5190	Decal - No Riders	1
8	01-506-0250	Decal - Danger	1
9	01-506-0500	Decal - Toro	1
10	23-004-0901	Hose Bracket	2

Ref. No.	Part No.	Description	No. Used
11	01-308-0670	Hydraulic Valve	1
12	322-12	Capscrew - Hex Hd.	2
13	3256-3	Flat Washer	4
14	3253-4	Lock Washer	2
15	3217-6	Hex Nut	2
16	01-269-1530	Valve Stem	1
17	02-201-2170	Cap	1
*	23-002-0021	Pressure Cap Assembly (Incl. Ref. #16, 17)	1
18	3296-22	Lock Nut	4

* Not Illustrated



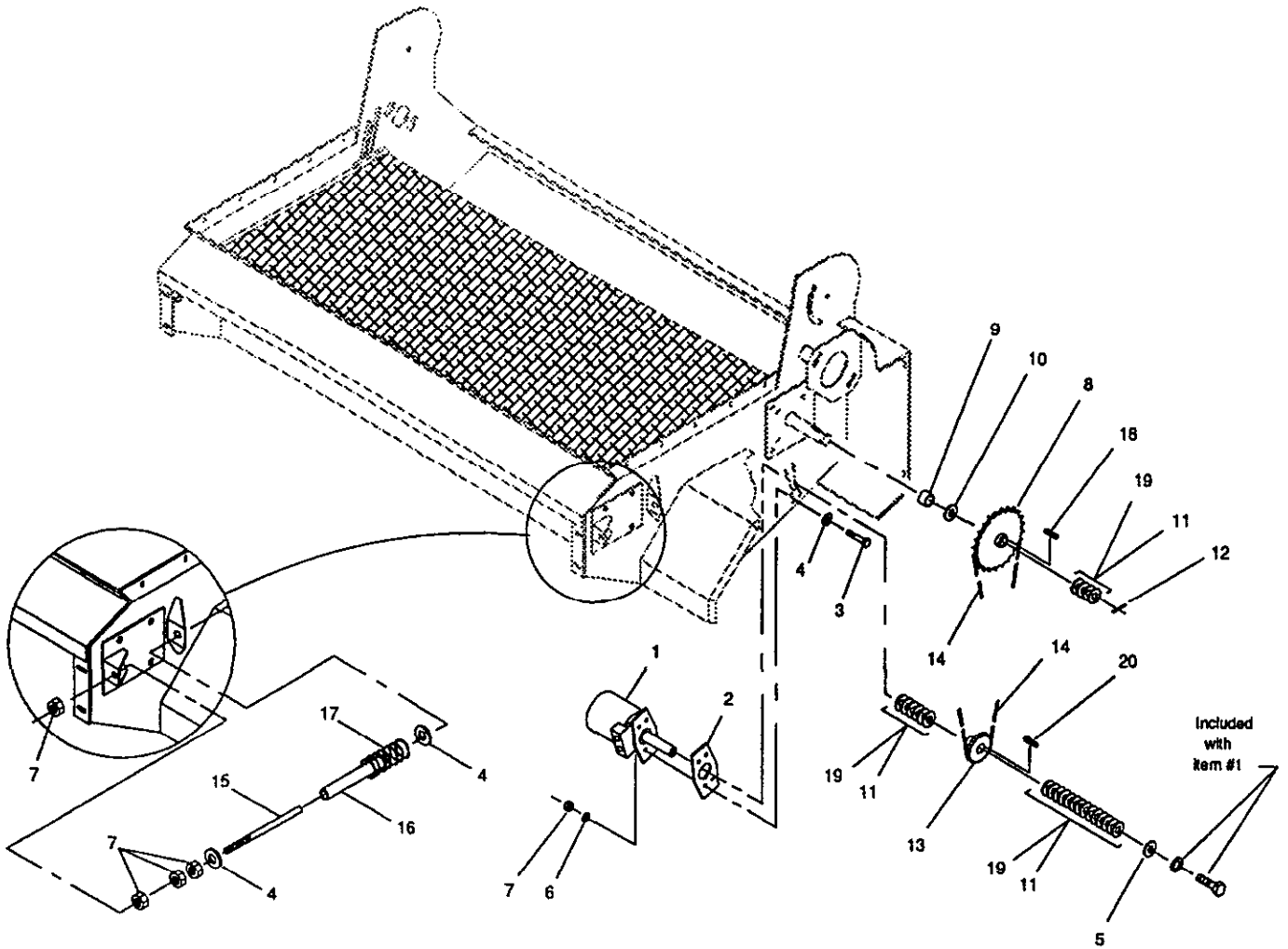
ROLLER ASSEMBLY

23-005

Ref. No.	Part No.	Description	No. Used
1	23-005-0121	Drive Roller	1
2	23-004-0271	Conveyor Top	1
3	01-158-0280	Truss Head Machine Screw	12
4	325-6	Capscrew - Hex Hd.	4
5	3217-26	Hex Nut	24
6	23-005-0111	Idler Roller	1
7	01-260-1790	Sheave	4
8	01-100-0180	Bearing	4
9	01-271-0210	Conveyor Belt	1
*	01-271-0360	Pin - Lacing	1
10	3217-6	Hex Nut	2
11	23-005-0951	Bearing Pull	2

Ref. No.	Part No.	Description	No. Used
12	325-7	Capscrew - Hex Hd.	8
13	3253-7	Lock Washer	12
14	3256-26	*SAE* Flat Washer	16
15	23-004-0581	Roller Cover	1
16	3218-5	Jam Nut	24
17	3217-9	Hex Nut	4
18	322-3	Capscrew - Hex Hd.	2
19	23-004-0911	Roller Lock Plate	1
20	325-4	Capscrew - Hex Hd.	4
21	23-004-0721	Belt Roller Washer	8
22	325-8	Capscrew - Hex Hd.	4
23	3253-3	Lock Washer	12

* Not Illustrated



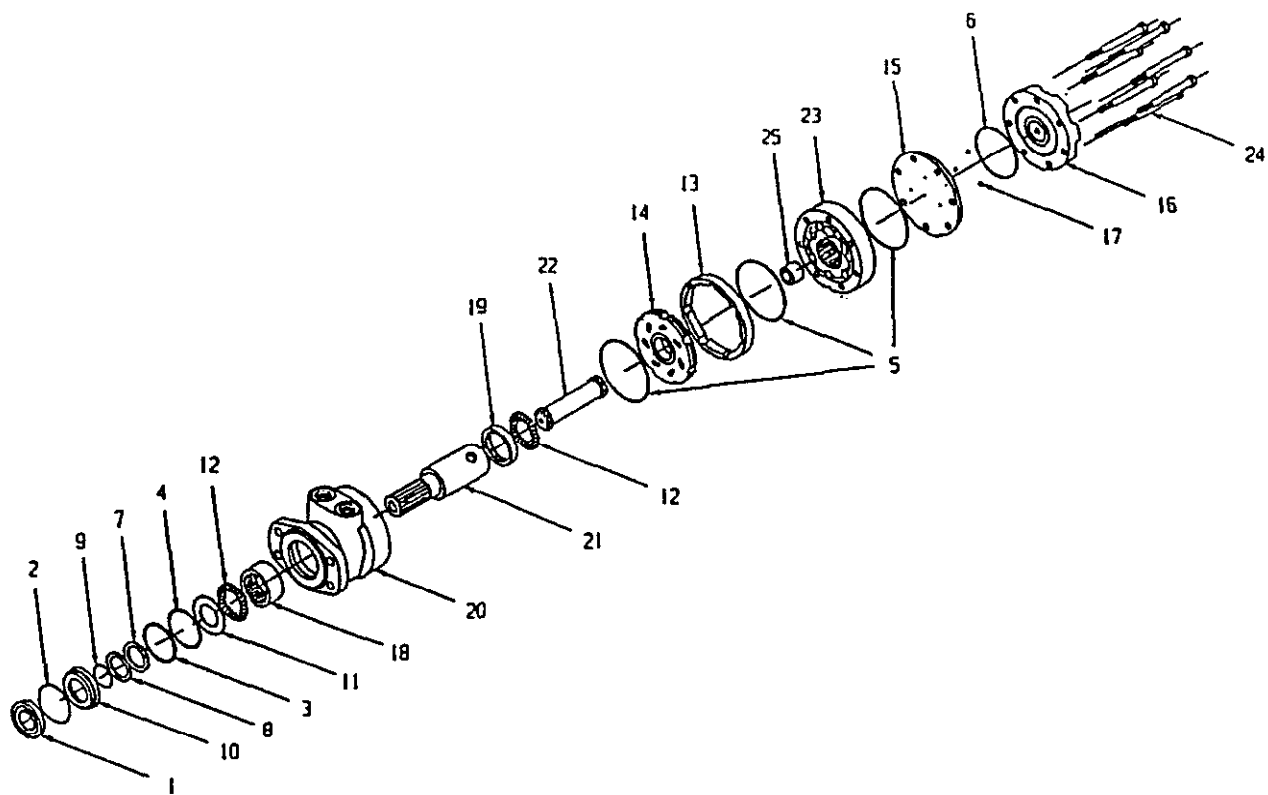
BELT DRIVE & TENSION

23-008

Ref. No.	Part No.	Description	No. Used
1	01-304-0420	Hydraulic Motor	1
*	01-304-0260	Seal Kit	1
2	18-204-0461	Motor Spacer	1
3	325-7	Capscrew - Hex Hd.	4
4	3256-6	Flat Washer	8
5	3256-7	Flat Washer	1
6	3253-7	Lock Washer	4
7	3217-9	Hex Nut	12
8	01-262-0960	Sprocket	1
9	23-004-0751	Sprocket Spacer	1
10	01-168-2018	Machinery Bushing	1

Ref. No.	Part No.	Description	No. Used
11	01-168-2014	Machinery Bushing	12(var)
12	3272-25	Cotter Pin	1
13	01-262-1270	Sprocket	1
14	23-004-0821	Drive Chain, #50	1
*	01-251-0020	Offset Link, #50	1
15	23-004-0741	Belt Tension Rod	2
16	23-004-0731	Belt Tension Spacer	2
17	01-261-0400	Spring	2
18	48-004-1931	Key	1
19	01-168-2010	Machinery Bushing	12(var)
20	23-004-1091	Key	1

* Not Illustrated



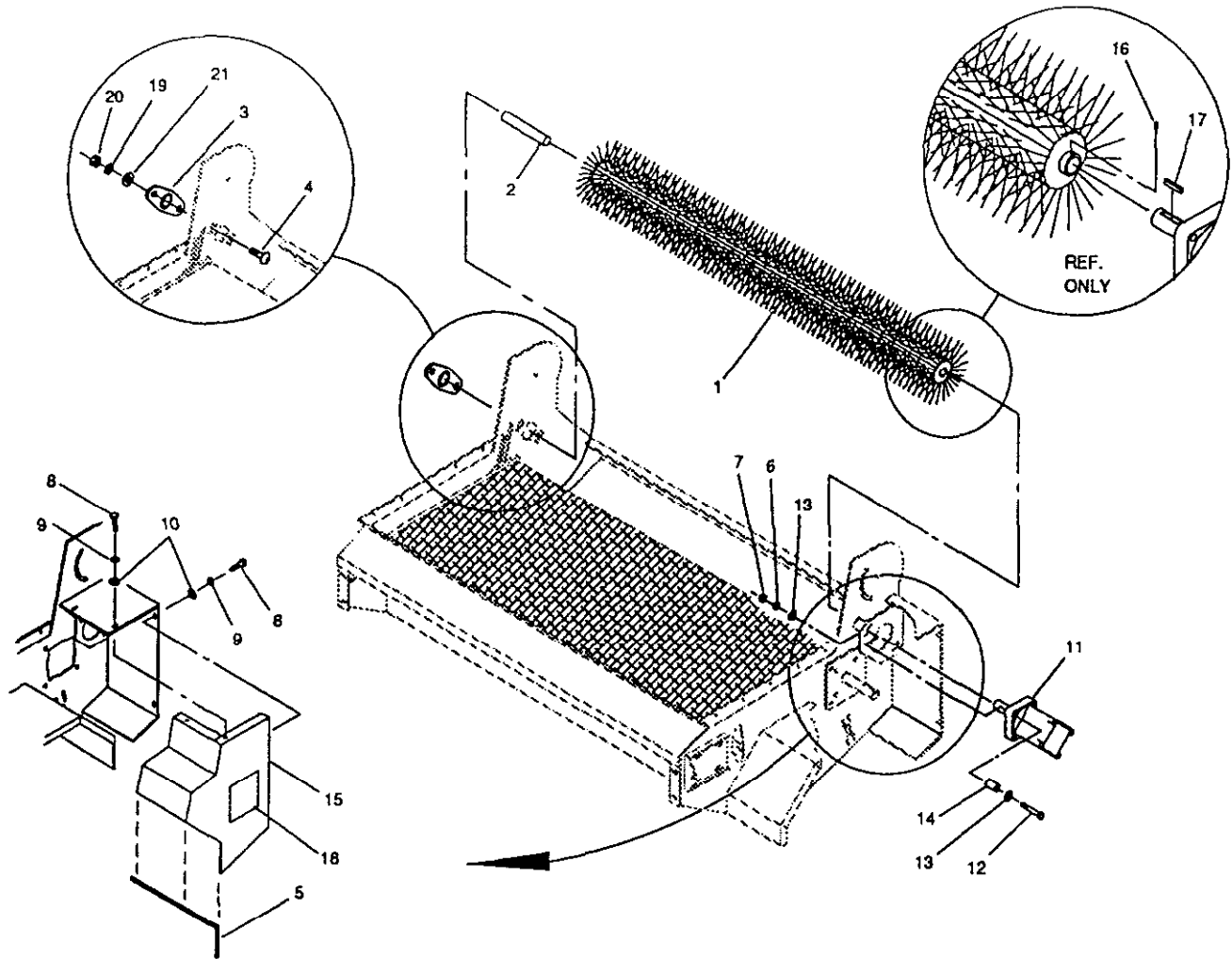
HYDRAULIC MOTOR NO. 01-304-0420

23-011

Ref. No.	Part No.	Description	No. Used
1		Seal - Dust	1
2		Ring - Snap	1
3		Shim - Backup	1
4		Seal - Housing, High Press.	1
5		Seal - Body	3
6		Seal - Body	1
7		Seal - Shaft	1
8		Seal - Backup	1
9		Shim - Backup	1
10		Seal Carrier	1
11		Thrust Washer	1
12	01-304-0660	Thrust Bearing	2
13	01-304-0800	Manifold Boot	1
14	01-304-0810	Manifold CCW	1
15	01-304-0820	Balance Plate	1
16	01-304-0830	End Cover	1

Ref. No.	Part No.	Description	No. Used
17		Ball	4
18		Roller Bearing	1
19		Roller Bearing	1
20		Housing	1
21	01-304-0460	Shaft	1
22		Drive Link	1
23	01-304-0930	Rotor Set	1
24	01-304-0940	Bolts	7
25		Drive Link Spacer	1
*	01-304-0260	Seal Kit (Incl. Ref. #1-11)	1
*	01-304-0910	Housing/Bearing Kit (Incl. Ref. #18, 19, 20)	1
*	01-304-0920	Drive Link (Incl. Ref. #22, 25)	1

* Not Illustrated



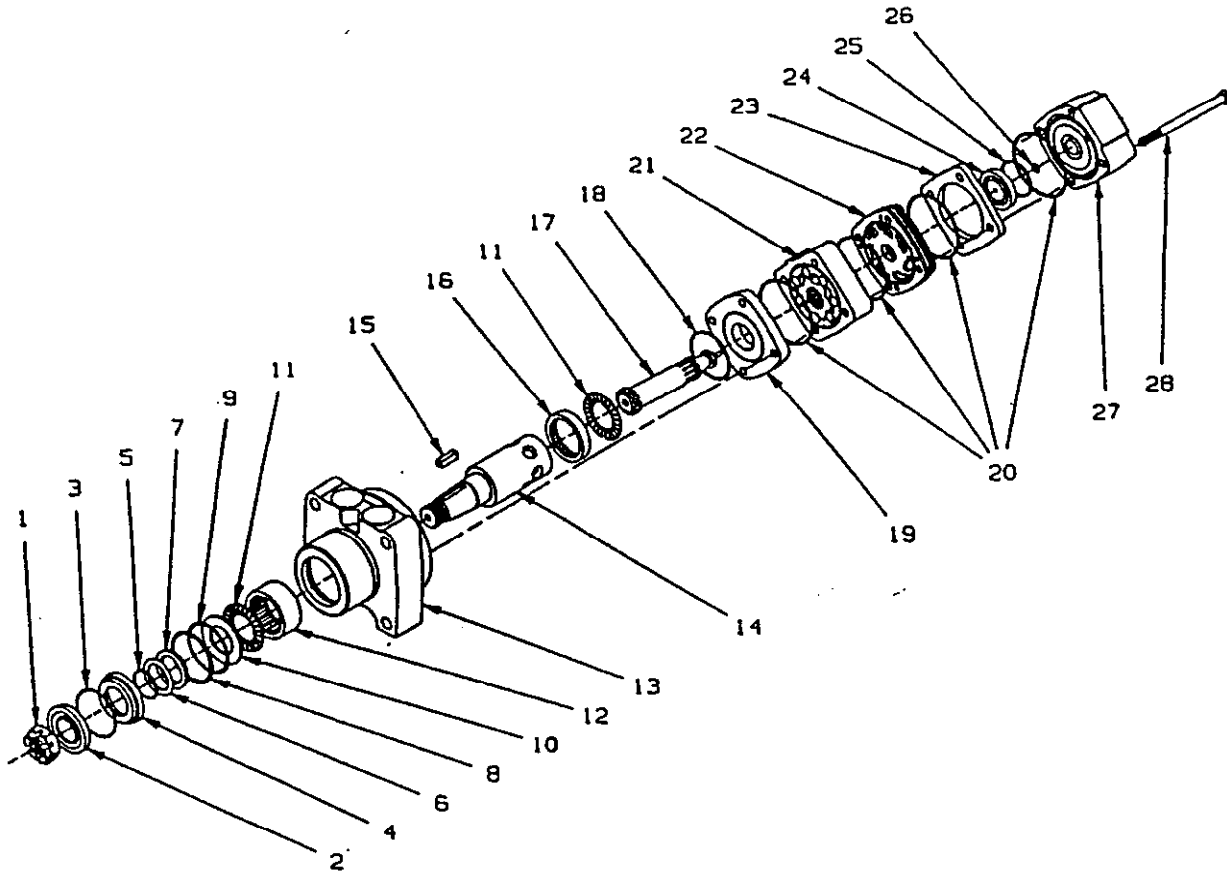
BRUSH ASSEMBLY

23-007

Ref. No.	Part No.	Description	No. Used
1	01-286-0440	Brush (Incl. Ref. #16, 17)	1
2	23-004-0831	Brush Shaft	1
3	01-100-0160	Bearing	1
4	3232-2	Carriage Bolt	2
5	23-004-0931	Rubber Seal	1
6	3253-7	Lock Washer	2
7	3217-9	Hex Nut	2
8	322-3	Capscrew - Hex Hd.	4
9	3253-4	Lock Washer	4
10	3256-3	Flat Washer	4
11	01-304-0500	Hydraulic Motor	1
*	01-304-0560	Seal Kit	1

Ref. No.	Part No.	Description	No. Used
12	325-14	Capscrew - Hex Hd.	2
13	3256-26	"SAE" Flat Washer	4
14	23-004-0851	Motor Bolt Spacer	2
15	23-005-0131	Guard	1
16	01-163-0190	Set Screw	3
17	56-004-2401	Key	1
18	01-506-0050	Decal - Danger	1
19	3253-6	Lock Washer	2
20	3217-8	Hex Nut	2
21	3256-5	Flat Washer	2

* Not Illustrated



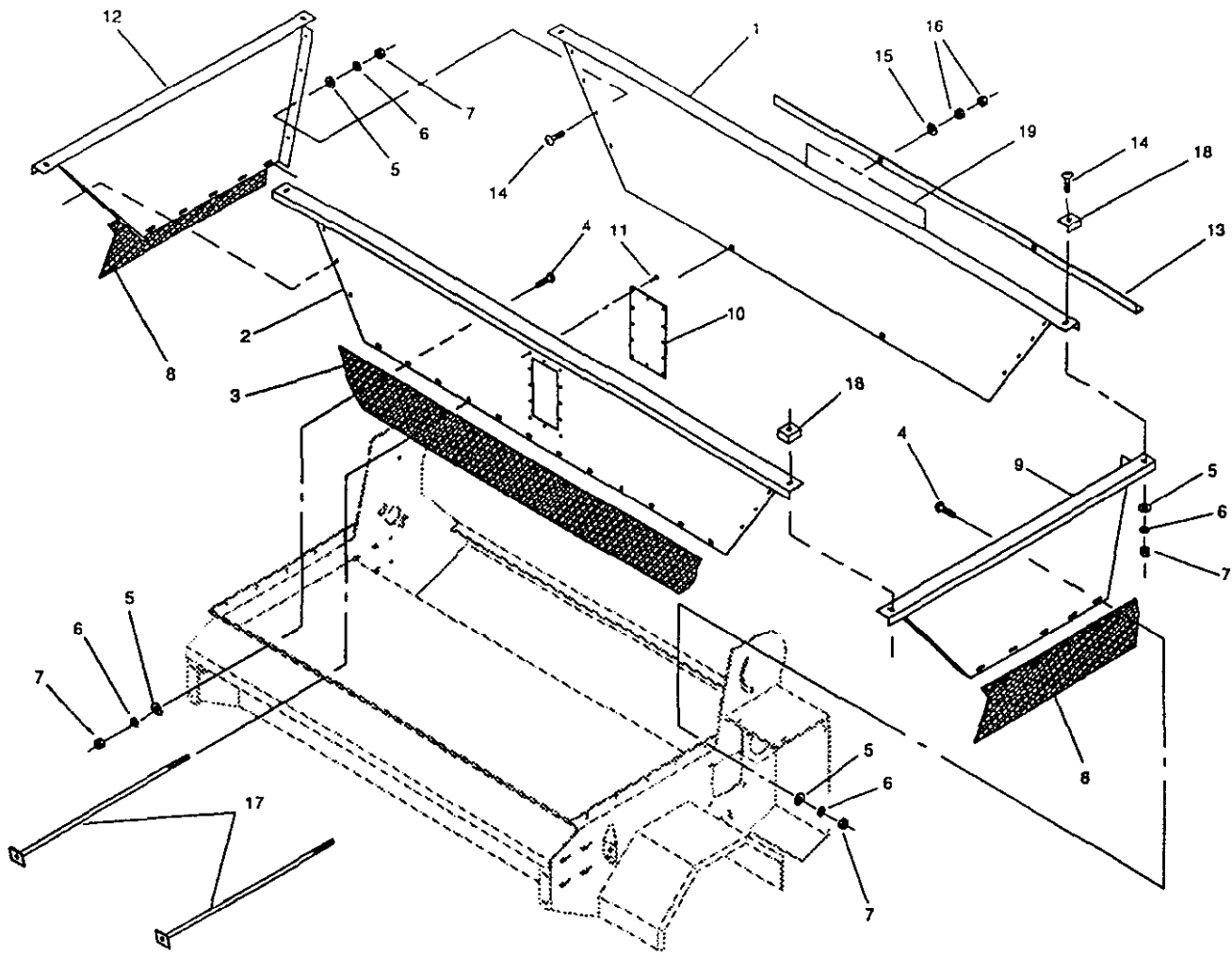
HYDRAULIC MOTOR NO. 01-304-0500

23-010

Ref. No.	Part No.	Description	No. Used
1		Slotted Nut	1
2		Seal - Dust	1
3		Ring - Snap	1
4		Seal - Carrier	1
5		Shim - Backup	1
6		Seal - Backup	1
7		Seal - Shaft	1
8		Shim - Backup	1
9		Seal - Housing, High Press.	1
10		Thrust Washer	1
11	01-304-0660	Thrust Bearing	2
12		Roller Bearing	1
13		Housing	1
14		Shaft	1
15		Key - Shaft	1
16		Roller Bearing	1
17	01-304-0700	Drive Link	1
18		Seal	1
19	01-304-0710	Divider Plate	1
20		Seal - Body	4

Ref. No.	Part No.	Description	No. Used
21	01-304-0720	Rotor Set	1
22	01-304-0730	Manifold	1
23		Commutator Plate	1
24		Commutator	1
25		Seal - Commutator	1
26		Seal	1
27	01-304-0750	End Cover	1
28	01-304-0760	Bolt Set	1
*	01-304-0680	Shaft Kit (Incl. Ref. #1, 14, 15)	1
*	01-304-0560	Seal Kit (Incl. Ref. #2, 3, 5-9, 18, 20, 25, 26)	1
*	01-304-0670	Seal Kit (Incl. Ref. #4, 10)	1
*	01-304-0690	Housing/Bearing Kit (Incl. Ref. #12, 13, 16)	1
*	01-304-0740	Commutator Set (Incl. Ref. #23, 24)	1

* Not Illustrated

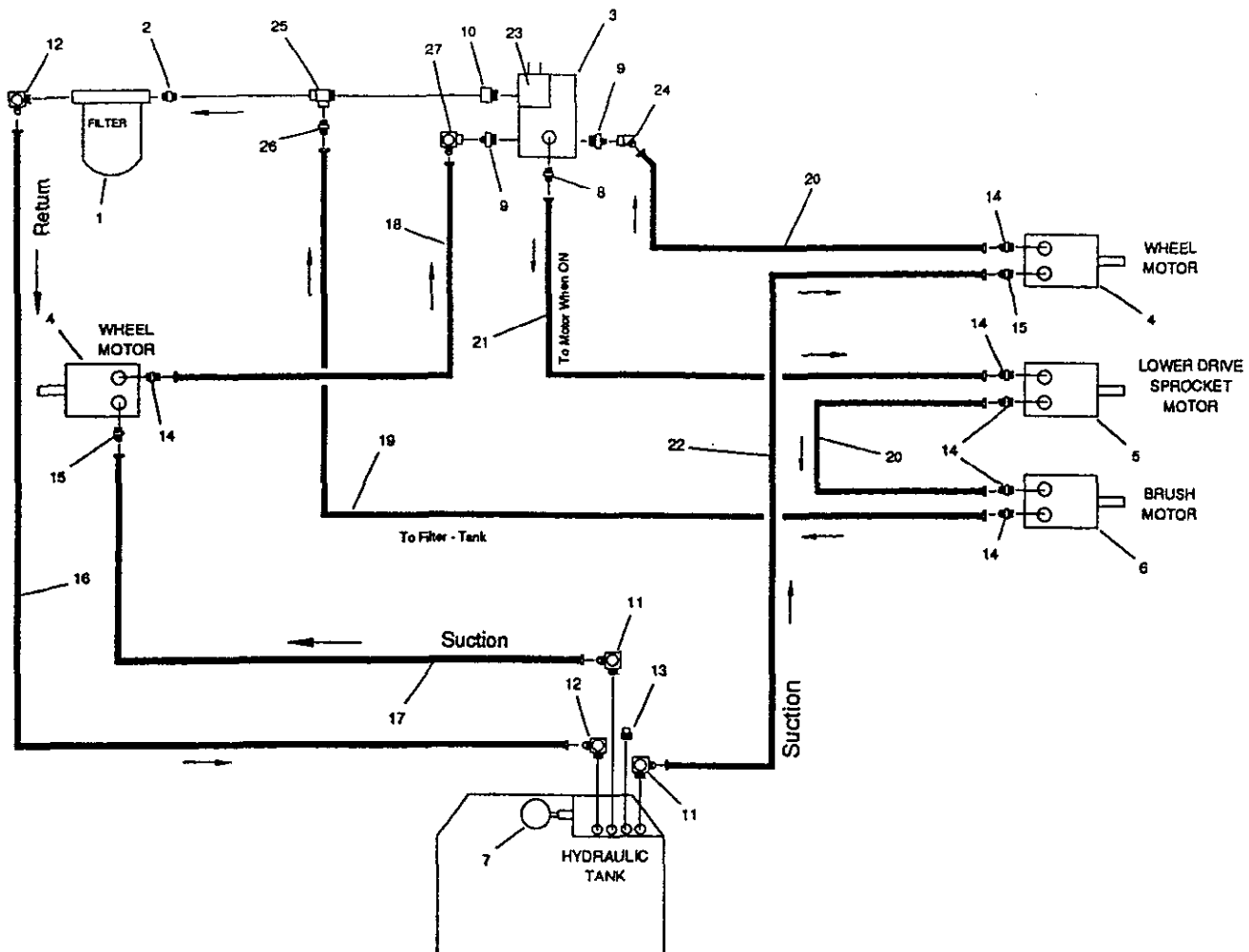


HOPPER ASSEMBLY

23-008

Ref. No.	Part No.	Description	No. Used
1	23-004-1001	Hopper Back	1
2	23-004-0541	Hopper Front	1
3	23-004-0801	Skirt-long	1
4	3229-2	Carriage Bolt	20
5	3256-2	Flat Washer	40
6	3253-3	Lock Washer	40
7	3217-5	Hex Nut	40
8	23-004-0791	Skirt-short	2
9	23-004-0521	Hopper Side - L.H.	1
10	23-004-0981	Sight Glass	1

Ref. No.	Part No.	Description	No. Used
11	01-161-0060	Pop Rivet	12
12	23-004-0871	Hopper Side - R.H.	1
13	23-004-1031	Hopper Brace	1
14	3229-1	Carriage Bolt	20
15	3256-4	Flat Washer	2
16	3217-7	Hex Nut	4
17	23-005-1101	Support Rod	2
18	23-005-0961	Corner Guard	4
19	01-506-0520	Decal - Toro	1



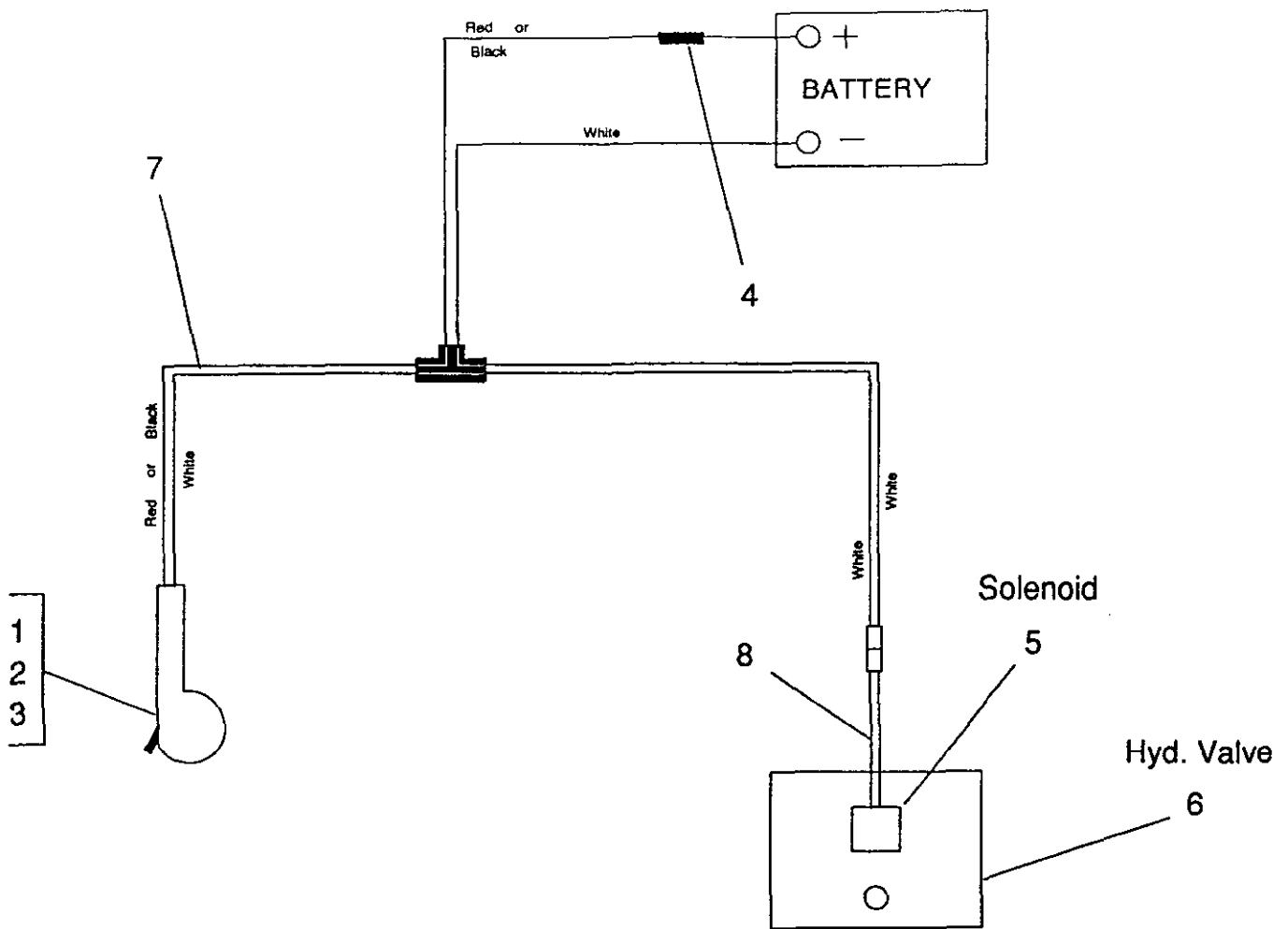
HYDRAULIC SCHEMATIC

23-012

Ref. No.	Part No.	Description	No. Used
1	01-316-0080	Filter Assembly	1
•	01-315-0070	Filter Head	1
•	01-317-0120	Filter Element	1
2	01-201-0230	Fitting, 5404-12	1
3	01-308-0670	Hyd. Valve (Incl. Ref. #23)	1
•	01-308-0970	Relief Cartridge	1
•	01-308-0890	Seal Kit	1
4	01-304-0510	Hyd. Motor	2
•	01-304-0560	Seal Kit	1
5	01-304-0420	Hyd. Motor	1
•	01-304-0260	Seal Kit	1
6	01-304-0500	Hyd. Motor	1
•	01-304-0560	Seal Kit	1
7	01-303-0110	Gauge	1
8	01-201-1230	Fitting	1
9	01-308-0820	Check Valve	2
10	01-201-0930	Fitting	1

Ref. No.	Part No.	Description	No. Used
11	01-201-2160	Fitting	2
12	01-201-1220	Fitting	2
13	01-451-0050	Pipe Plug	1
14	01-201-1350	Fitting	6
15	01-201-2130	Fitting	2
16	01-312-2580	Hyd. Hose	1
17	01-312-2590	Hyd. Hose	1
18	01-312-2220	Hyd. Hose	1
19	01-312-2610	Hyd. Hose	1
20	01-312-2250	Hyd. Hose	2
21	01-312-2620	Hyd. Hose	1
22	01-312-2600	Hyd. Hose	1
23	01-308-0860	Electric Solenoid	1
24	01-201-2660	Fitting	1
25	01-201-0270	Fitting	1
26	01-201-1410	Fitting	1
27	01-201-2410	Fitting	1

* Not Illustrated



ELECTRICAL SCHEMATIC

23-013

Ref. No.	Part No.	Description	No. Used
1	01-603-0750	Switch	1
2	01-603-0760	Boot	1
3	01-603-0770	Switch Box	1
4	01-612-0520	Fuse	1
5	01-308-0860	Electrical Solenoid	1

Ref. No.	Part No.	Description	No. Used
6	01-308-0670	Hydraulic Valve	1
7	01-606-0220	Wiring Harness, complete (Includes Ref. #1,2,3,4,8)	1
8	01-606-0250	Wiring Harness, short half	1

PART NUMBER INDEX

Part No.	Description	Pg. No.	Ref. No.	Qty.	Part No.	Description	Pg. No.	Ref. No.	Qty.
01-100-0160	Bearing	9	3	1	01-304-0670	Seal Kit	10	*	1
01-100-0180	Bearing	6	8	4	01-304-0670	Seal Kit	3	*	1
01-102-0130	Bearing Cone	2	4	8	01-304-0680	Shaft Kit	10	*	1
01-151-0170	Cotter Pin	2	16	2	01-304-0690	Housing/Bearing Kit	10	*	1
01-158-0280	Truss Head Machine Screw	6	3	12	01-304-0690	Housing/Bearing Kit	3	*	1
01-158-1610	Lug Bolt	2	21	10	01-304-0700	Drive Link	10	17	1
01-161-0060	Pop Rivet	11	11	12	01-304-0710	Divider Plate	10	19	1
01-161-0090	Pop Rivet	4	10	24	01-304-0710	Divider Plate	3	19	1
01-163-0190	Set Screw	9	16	3	01-304-0720	Rotor Set	10	21	1
01-168-1210	Machinery Bushing	2	17	10	01-304-0730	Manifold	10	22	1
01-168-2010	Machinery Bushing	7	19	12	01-304-0730	Manifold	3	22	1
01-168-2014	Machinery Bushing	7	11	12	01-304-0740	Commutator Set	10	*	1
01-168-2018	Machinery Bushing	7	10	1	01-304-0740	Commutator Set	3	*	1
01-189-0813	Lock Nut	4	6	1	01-304-0750	End Cover	10	27	1
01-190-1210	Slotted Nut	2	9	2	01-304-0750	End Cover	3	27	1
01-201-0230	Fitting	12	2	1	01-304-0760	Bolt Set	10	28	1
01-201-0270	Fitting	12	25	1	01-304-0770	Drive Link	3	17	1
01-201-0930	Fitting	12	10	1	01-304-0780	Rotor Set	3	21	1
01-201-1220	Fitting	12	12	2	01-304-0790	Bolt Set	3	28	1
01-201-1230	Fitting	12	8	1	01-304-0800	Manifold Boot	8	13	1
01-201-1350	Fitting	12	14	6	01-304-0810	Manifold CCW	8	14	1
01-201-1410	Fitting	12	26	1	01-304-0820	Balance Plate	8	15	1
01-201-2130	Fitting	12	15	2	01-304-0830	End Cover	8	16	1
01-201-2160	Fitting	12	11	2	01-304-0900	Shaft Kit	3	*	1
01-201-2410	Fitting	12	27	1	01-304-0910	Housing/Bearing Kit	8	*	1
01-201-2660	Fitting	12	24	1	01-304-0920	Drive Link	8	*	1
01-215-0050	Grease Zerk	4	13	4	01-304-0930	Rotor Set	8	23	1
01-251-0020	Offset Link	7	*	1	01-304-0940	Bolts	8	24	7
01-256-0200	Knob	4	4	1	01-308-0670	Hyd. Valve	12	3	1
01-260-1790	Sheave	6	7	4	01-308-0670	Hydraulic Valve	13	6	1
01-261-0400	Spring	7	17	2	01-308-0670	Hydraulic Valve	5	11	1
01-262-0960	Sprocket	7	8	1	01-308-0820	Check Valve	12	9	2
01-262-1270	Sprocket	7	13	1	01-308-0860	Electric Solenoid	12	23	1
01-269-0060	Axle Spacer	2	1	8	01-308-0860	Electrical Solenoid	13	5	1
01-269-0320	Tire	2	22	2	01-308-0890	Seal Kit	12	*	1
01-269-0350	Tire	2	6	4	01-308-0970	Relief Cartridge	12	*	1
01-269-0360	Wheel	2	24	4	01-312-2220	Hyd. Hose	12	18	1
01-269-1000	Hub	2	15	2	01-312-2250	Hyd. Hose	12	20	2
01-269-1020	Wheel	2	20	2	01-312-2580	Hyd. Hose	12	16	1
01-269-1530	Valve Stem	5	16	1	01-312-2590	Hyd. Hose	12	17	1
01-271-0210	Conveyor Belt	6	9	1	01-312-2600	Hyd. Hose	12	22	1
01-271-0360	Pin - Lacing	6	*	1	01-312-2610	Hyd. Hose	12	19	1
01-286-0440	Brush	9	1	1	01-312-2620	Hyd. Hose	12	21	1
01-303-0110	Gauge	12	7	1	01-315-0070	Filter Head	12	*	1
01-304-0260	Seal Kit	12	*	1	01-316-0080	Filter Assembly	12	1	1
01-304-0260	Seal Kit	7	*	1	01-317-0120	Filter Element	12	*	1
01-304-0260	Seal Kit	8	*	1	01-405-0460	Seal	2	2	8
01-304-0420	Hyd. Motor	12	5	1	01-451-0050	Pipe Plug	12	13	1
01-304-0420	Hydraulic Motor	7	1	1	01-506-0050	Decal - Danger	9	18	1
01-304-0460	Shaft	8	21	1	01-506-0210	Decal - Height Adjustment	4	20	1
01-304-0500	Hyd. Motor	12	6	1	01-506-0240	Decal - Warning	1	8	2
01-304-0500	Hydraulic Motor	9	11	1	01-506-0250	Decal - Danger	5	8	1
01-304-0510	Hyd. Motor	12	4	2	01-506-0500	Decal - Toro	5	9	1
01-304-0510	Hydraulic Motor	2	14	2	01-506-0520	Decal - Toro	11	19	1
01-304-0560	Seal Kit	10	*	1	01-506-0690	Decal - Topdresser 2300	1	6	2
01-304-0560	Seal Kit	12	*	1	01-603-0750	Switch	13	1	1
01-304-0560	Seal Kit	12	*	1	01-603-0760	Boot	13	2	1
01-304-0560	Seal Kit	2	*	1	01-603-0770	Switch Box	13	3	1
01-304-0560	Seal Kit	3	*	1	01-606-0220	Wiring Harness	13	7	1
01-304-0560	Seal Kit	9	*	1	01-606-0250	Wiring Harness	13	8	1
01-304-0660	Thrust Bearing	10	11	2	01-612-0520	Fuse	13	4	1
01-304-0660	Thrust Bearing	3	11	2	02-201-2170	Cap	5	17	1
01-304-0660	Thrust Bearing	8	12	2	18-204-0461	Motor Spacer	7	2	1

* Not Illustrated

PART NUMBER INDEX (Continued)

Part No.	Description	Pg. No.	Ref. No.	Qty.	Part No.	Description	Pg. No.	Ref. No.	Qty.
23-002-0021	Pressure Cap Assembly	5	*	1	3218-5	Jam Nut	4	2	10
23-004-0221	Gate Seal	4	9	1	3218-5	Jam Nut	6	16	24
23-004-0241	Axle Bracket	2	8	2	322-12	Capscrew - Hex Hd.	5	12	2
23-004-0271	Conveyor Top	6	2	1	322-3	Capscrew - Hex Hd.	6	18	2
23-004-0521	Hopper Side-L.H.	11	9	1	322-3	Capscrew - Hex Hd.	9	8	4
23-004-0541	Hopper Front	11	2	1	3229-1	Carriage Bolt	11	14	20
23-004-0581	Roller Cover	6	15	1	3229-2	Carriage Bolt	11	4	20
23-004-0721	Belt Roller Washer	6	21	8	323-6	Capscrew - Hex Hd.	2	11	2
23-004-0721	Plastic Washer	4	5	2	323-6	Capscrew - Hex Hd.	5	2	4
23-004-0731	Belt Tension Spacer	7	16	2	3232-2	Carriage Bolt	9	4	2
23-004-0741	Belt Tension Rod	7	15	2	325-14	Capscrew - Hex Hd.	1	3	2
23-004-0751	Sprocket Spacer	7	9	1	325-14	Capscrew - Hex Hd.	2	3	8
23-004-0791	Skirt	11	8	2	325-14	Capscrew - Hex Hd.	9	12	2
23-004-0801	Skirt	11	3	1	325-4	Capscrew - Hex Hd.	6	20	4
23-004-0821	Drive Chain	7	14	1	325-5	Capscrew - Hex Hd.	4	3	2
23-004-0831	Brush Shaft	9	2	1	325-6	Capscrew - Hex Hd.	6	4	4
23-004-0851	Motor Bolt Spacer	2	23	8	325-7	Capscrew - Hex Hd.	6	12	8
23-004-0851	Motor Bolt Spacer	9	14	2	325-7	Capscrew - Hex Hd.	7	3	4
23-004-0871	Hopper Side-R.H.	11	12	1	325-8	Capscrew - Hex Hd.	6	22	4
23-004-0901	Hose Bracket	5	10	2	3253-3	Lock Washer	11	6	40
23-004-0911	Roller Lock Plate	6	19	1	3253-3	Lock Washer	6	23	12
23-004-0931	Rubber Seal	9	5	1	3253-4	Lock Washer	5	14	2
23-004-0981	Sight Glass	11	10	1	3253-4	Lock Washer	9	9	4
23-004-0991	Gate	4	8	1	3253-5	Lock Washer	2	12	2
23-004-1001	Hopper Back	11	1	1	3253-5	Lock Washer	5	6	4
23-004-1021	Gate Rod	4	17	2	3253-6	Lock Washer	9	19	2
23-004-1031	Hopper Brace	11	13	1	3253-7	Lock Washer	2	18	8
23-004-1041	Slide	4	11	2	3253-7	Lock Washer	4	15	2
23-004-1061	Adjustment Lug	4	19	1	3253-7	Lock Washer	6	13	12
23-004-1091	Key	7	20	1	3253-7	Lock Washer	7	6	4
23-005-0103	Main Frame	1	1	1	3253-7	Lock Washer	9	6	2
23-005-0111	Idler Roller	6	6	1	3256-2	Flat Washer	11	5	40
23-005-0121	Drive Roller	6	1	1	3256-26	"SAE" Flat Washer	2	19	8
23-005-0131	Guard	9	15	1	3256-26	"SAE" Flat Washer	4	7	11
23-005-0141	Gate Control Arm	4	1	1	3256-26	"SAE" Flat Washer	6	14	16
23-005-0151	Axle	2	7	2	3256-26	"SAE" Flat Washer	9	13	4
23-005-0161	Hitch	1	2	1	3256-3	Flat Washer	5	13	4
23-005-0171	Hydraulic Tank	5	1	1	3256-3	Flat Washer	9	10	4
23-005-0951	Bearing Pull	6	11	2	3256-4	Flat Washer	11	15	2
23-005-0961	Corner Guard	11	18	4	3256-4	Flat Washer	5	5	8
23-005-1101	Support Rod	11	17	2	3256-5	Flat Washer	9	21	2
3217-26	Hex Nut	6	5	24	3256-6	Flat Washer	1	4	4
3217-5	Hex Nut	11	7	40	3256-6	Flat Washer	4	14	3
3217-6	Hex Nut	4	15	2	3256-6	Flat Washer	7	4	8
3217-6	Hex Nut	6	10	2	3256-7	Flat Washer	7	5	1
3217-7	Hex Nut	11	16	4	3272-11	Cotter Pin	4	18	2
3217-7	Hex Nut	2	13	2	3272-15	Cotter Pin	2	10	2
3217-7	Hex Nut	5	4	4	3272-25	Cotter Pin	7	12	1
3217-8	Hex Nut	9	20	2	3296-22	Lock Nut	5	18	4
3217-9	Hex Nut	2	5	8	48-004-1931	Key	7	18	1
3217-9	Hex Nut	4	16	2	48-004-3431	Hose Bracket	5	3	2
3217-9	Hex Nut	6	17	4	56-004-2401	Key	9	17	1
3217-9	Hex Nut	7	7	12	56-104-0301	Adjustment Lug-short	4	12	3
3217-9	Hex Nut	9	7	2	75-5190	Decal - No Riders	1	7	2
3218-5	Jam Nut	1	5	4	75-5190	Decal - No Riders	5	7	1

* Not Illustrated

PRODUCT CHANGES

In an effort to make improvements available to TORO owners as quickly as possible minor changes are incorporated into Toro's products from time to time that do not become immediately shown in the Parts Catalog. If such a change has been made in your unit which is not reflected in your manual see your TORO Distributor or an Authorized Service Dealer for information and part numbers.

IDENTIFICATION & ORDERING

MODEL AND NUMBERS

The TOPDRESSER2300 has two identification numbers; a model number and a serial number. The two numbers are stamped on a plate which is located on the hydraulic tank. In any correspondence concerning the Topdresser 2300, supply model and serial numbers to assure that correct information and replacement parts are obtained.

To order replacement parts from your TORO Distributor or an Authorized Service Dealer, supply the following information:

1. Model and serial number of the unit.
2. Part number description and the quantity of part (s) desired.

NOTE: Do not order by reference number if a parts catalog is being used: use the PART NUMBER.

TABLE OF CONTENTS

Description	Page	Description	Page
Tongue Assembly	1	Hydraulic Motor No. 01-304-0420	8
Wheel Assembly	2	Brush Assembly	9
Hydraulic Motor No. 01-304-0510	3	Hydraulic Motor No. 01-304-0500	10
Gate Control Assembly	4	Hopper Assembly	11
Hydraulic Tank Assembly	5	Hydraulic Schematic	12
Roller Assembly	6	Electrical Schematic	13
Belt Drive and Tension	7	Part Number Index	14 - 15