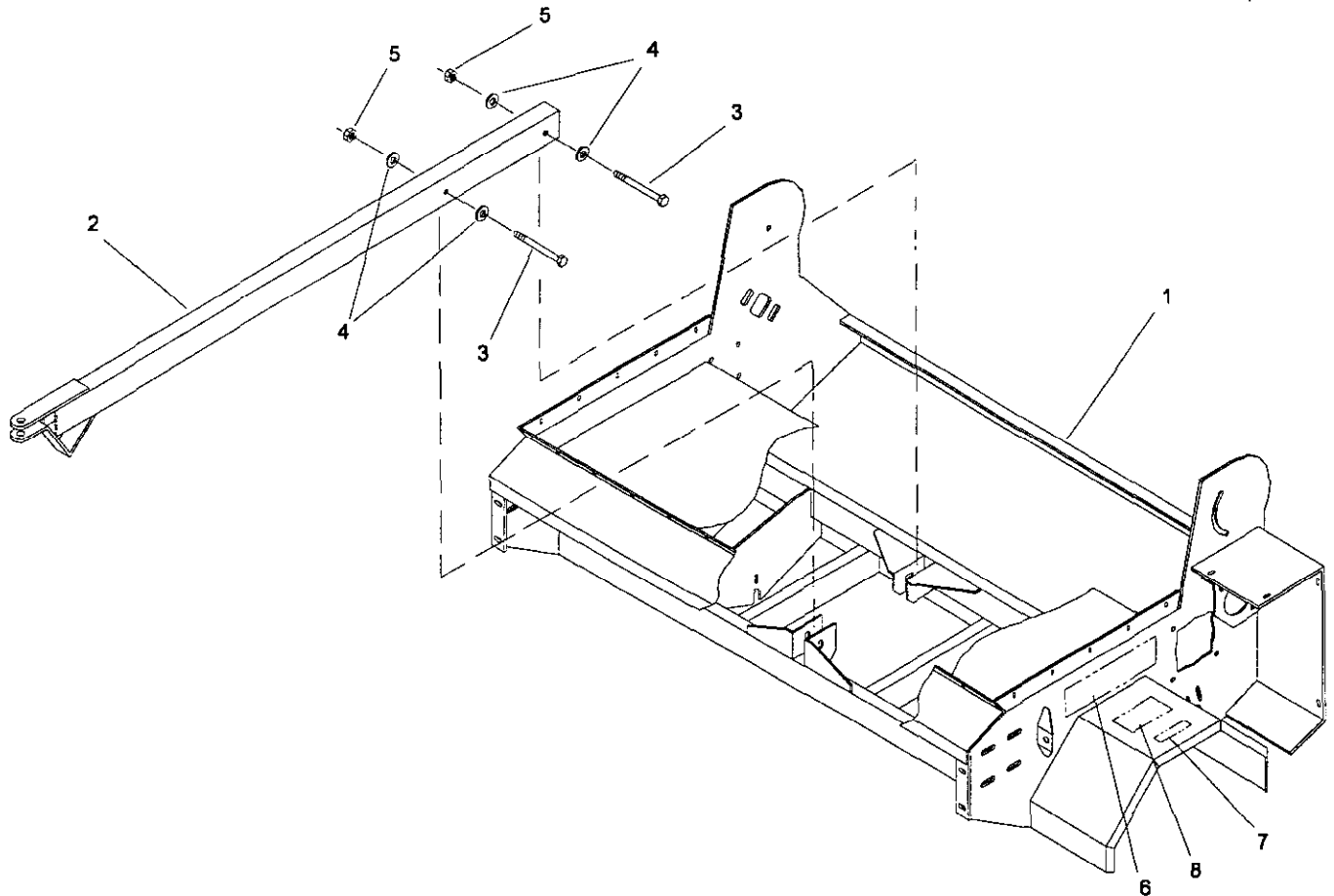




| | |
|------------------------------|--------------------------|
| MODEL NO. 44501 - 30381 & UP | PARTS CATALOG |
| TOPDRESSER 2300 | |

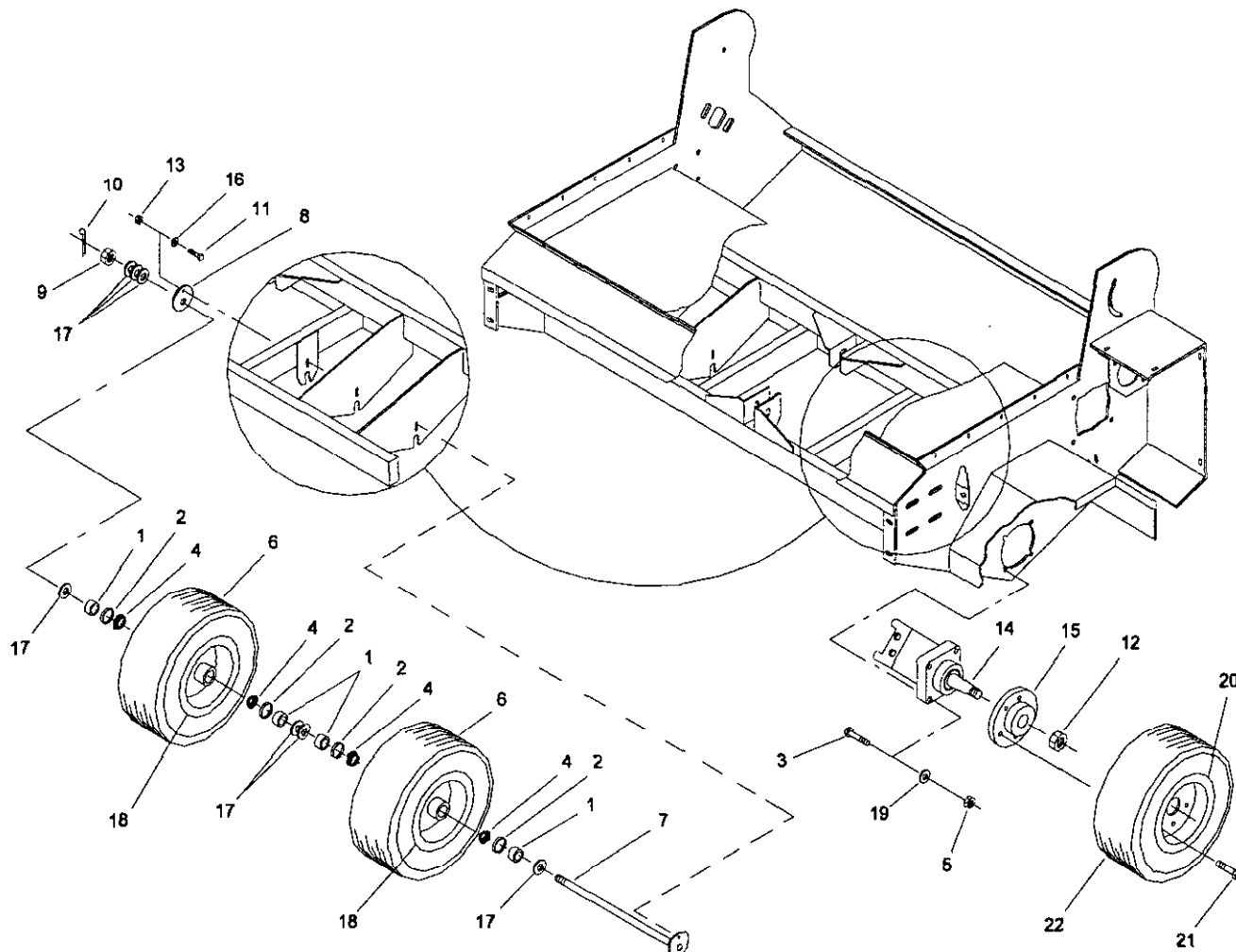


TONGUE ASSEMBLY

23-001F

| Ref. No. | Part No. | Description | No. Used |
|----------|-------------|--------------------|----------|
| 1 | 23-005-0103 | Main Frame | 1 |
| 2 | 23-005-0161 | Hitch | 1 |
| 3 | 325-14 | Capscrew - Hex Hd. | 2 |
| 4 | 3256-6 | Flat Washer | 4 |

| Ref. No. | Part No. | Description | No. Used |
|----------|-------------|-------------------------|----------|
| 5 | 3296-23 | Nut - ESNA Lock | 2 |
| 6 | 01-506-0690 | Decal - Topdresser 2300 | 2 |
| 7 | 75-5190 | Decal - No Riders | 2 |
| 8 | 01-506-0240 | Decal - Warning | 2 |



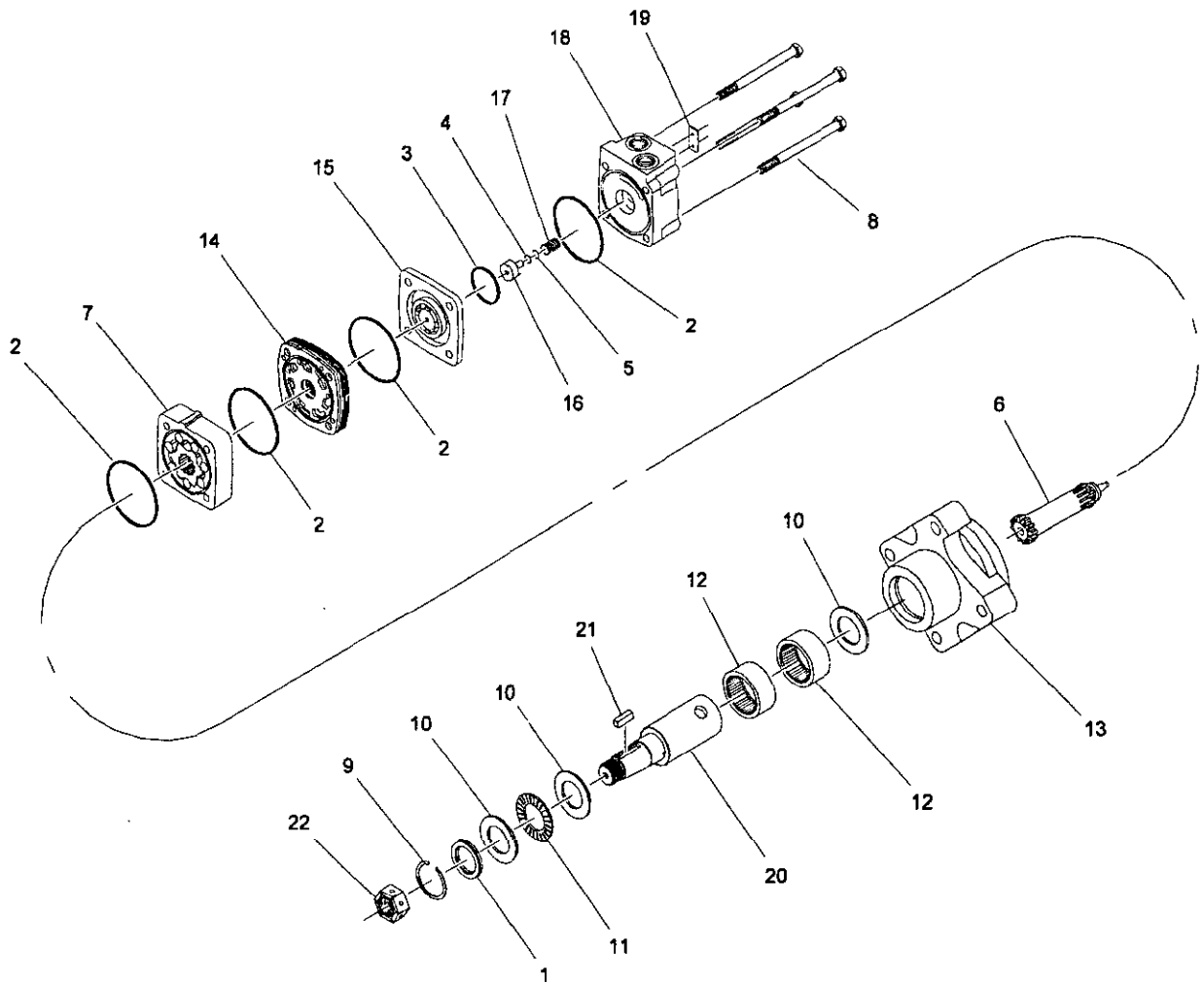
WHEEL ASSEMBLY

23-002F

| Ref. No. | Part No. | Description | No. Used |
|----------|-------------|--------------------|----------|
| 1 | 01-269-0060 | Axle Spacer | 8 |
| 2 | 01-405-0460 | Seal | 8 |
| 3 | 325-10 | Capscrew - Hex Hd. | 8 |
| 4 | 254-78 | Bearing Cone | 8 |
| 5 | 3296-23 | Nut - ESNA Lock | 8 |
| 6 | 01-269-0350 | Tire | 4 |
| 7 | 23-005-0151 | Axle | 2 |
| 8 | 23-004-0241 | Axle Bracket | 2 |
| 9 | 01-190-1210 | Slotted Nut | 2 |
| 10 | 3272-15 | Cotter Pin | 2 |
| 11 | 323-6 | Capscrew - Hex Hd. | 2 |
| 12 | 01-304-1240 | Pack Nut | 2 |

| Ref. No. | Part No. | Description | No. Used |
|----------|-------------|----------------------------------|----------|
| 13 | 3296-39 | Nut - ESNA Lock | 2 |
| 14 | 01-304-0990 | Hydraulic Motor (Incl. Ref. #25) | 2 |
| * | 01-304-1000 | Seal Kit | 1 |
| 15 | 01-269-2540 | Hub | 2 |
| 16 | 3256-4 | Flat Washer | 2 |
| 17 | 01-168-1210 | Machinery Bushing | 14 |
| 18 | 01-269-0360 | Wheel | 4 |
| * | 01-215-0100 | Grease Fitting (for Ref. #24) | 4 |
| 19 | 3256-26 | "SAE" Flat Washer | 8 |
| 20 | 01-269-1020 | Wheel | 2 |
| 21 | 01-158-2040 | Lug Bolt | 10 |
| 22 | 01-269-0320 | Tire | 2 |

* Not Illustrated



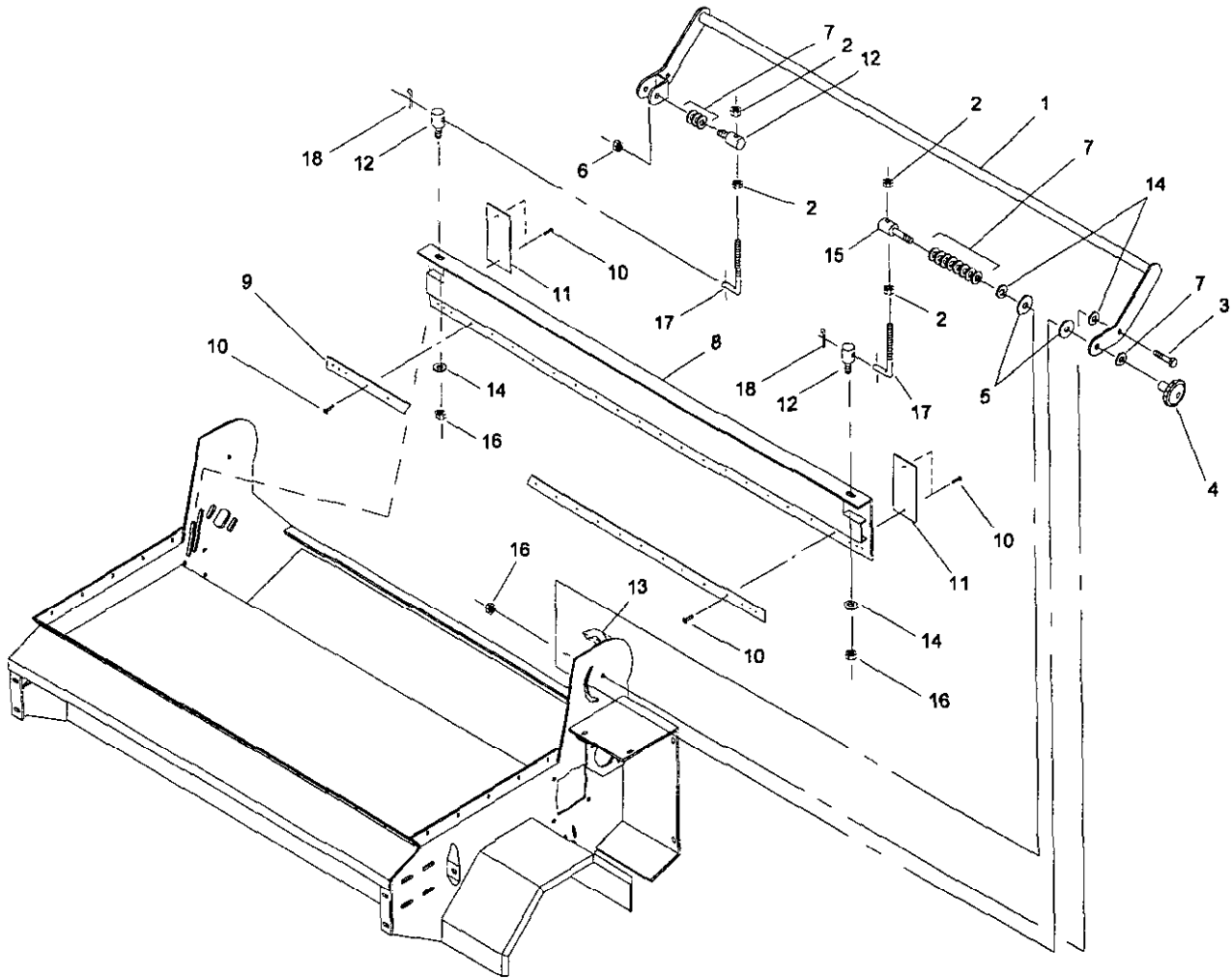
HYDRAULIC MOTOR - NO. 01-304-0990

HYDM0990

| Ref. No. | Part No. | Description | No. Used |
|----------|-------------|-------------------------|----------|
| 1 | | Shaft Seal | 1 |
| 2 | | Body Seal | 4 |
| 3 | | Commutator | 1 |
| 4 | | Teflon Backup Seal | 1 |
| 5 | | O-Ring Seal | 1 |
| * | 01-304-1000 | Seal Kit (incl. #1 - 5) | 1 |
| 6 | 01-304-1150 | Drive Link | 1 |
| 7 | 01-304-1160 | Rotor Set | 1 |
| 8 | 01-304-1170 | Bolt Set (4) | 1 |
| 9 | 01-304-1040 | Snap Ring | 1 |
| 10 | 01-304-1050 | Thrust Washer | 3 |
| 11 | 01-304-1060 | Thrust Bearing | 1 |
| 12 | 01-304-1070 | Needle Bearing | 2 |
| 13 | | Housing | 1 |

| Ref. No. | Part No. | Description | No. Used |
|----------|-------------|--|----------|
| * | 01-304-1080 | Housing Bearing Kit (incl. #10,12,13) | 1 |
| 14 | 01-304-1090 | Manifold | 1 |
| 15 | 01-304-1100 | Commutator Assembly | 1 |
| 16 | 01-304-1110 | Endcover Piston | 1 |
| 17 | 01-304-1120 | Piston Spring | 1 |
| 18 | | Endcover | 1 |
| * | 01-304-1130 | Endcover Kit (incl. #2,4,5,16,17,18) | 1 |
| 19 | | I.D. Tag Assembly | 1 |
| 20 | | Shaft | 1 |
| 21 | | Shaft Key | 1 |
| 22 | 01-304-1240 | Pack Nut | 1 |
| * | 01-304-1180 | Shaft Kit (incl. #20 - 22) | 1 |

* Not Illustrated

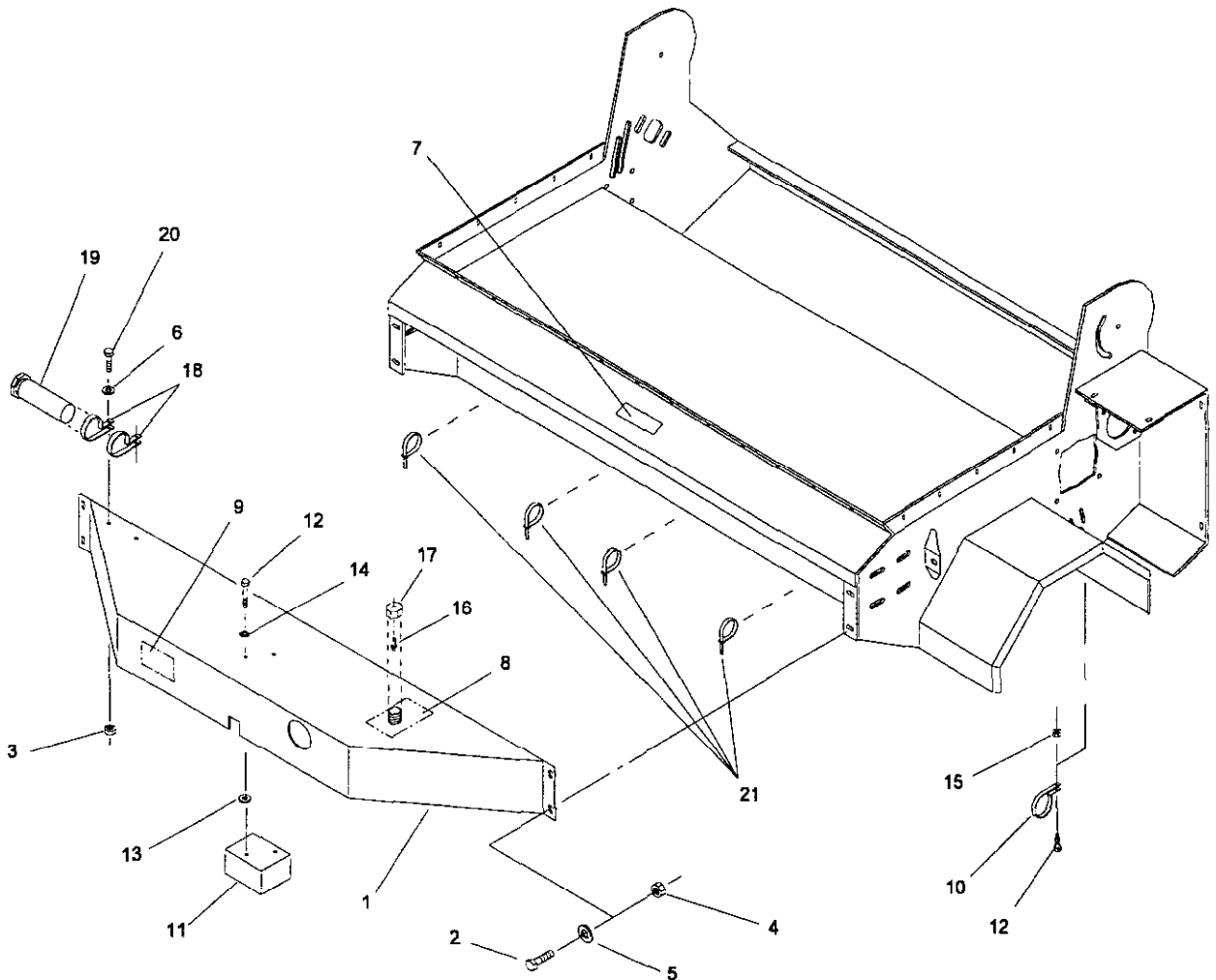


GATE CONTROL ASSEMBLY

23-003F

| Ref. No. | Part No. | Description | No. Used |
|----------|-------------|--------------------|----------|
| 1 | 23-005-0141 | Gate Control Arm | 1 |
| 2 | 3218-5 | Jam Nut | 4 |
| 3 | 325-5 | Capscrew - Hex Hd. | 2 |
| 4 | 01-256-0200 | Knob | 1 |
| 5 | 23-004-0721 | Plastic Washer | 2 |
| 6 | 32153-5 | Nut - Side Lock | 1 |
| 7 | 3256-26 | "SAE" Flat Washer | 11(var) |
| 8 | 23-005-1111 | Gate | 1 |
| 9 | 23-004-0221 | Gate Seal | 1 |

| Ref. No. | Part No. | Description | No. Used |
|----------|-------------|---------------------------|----------|
| 10 | 3269-20 | Pop Rivet | 26 |
| 11 | 23-004-1041 | Slide | 2 |
| 12 | 56-104-0301 | Adjustment Lug-short | 3 |
| 13 | 01-506-0210 | Decal - Height Adjustment | 1 |
| 14 | 3256-6 | Flat Washer | 5 |
| 15 | 23-004-1061 | Adjustment Lug-long | 1 |
| 16 | 3296-23 | Nut - ESNA Lock | 4 |
| 17 | 23-004-1021 | Gate Rod | 2 |
| 18 | 3272-11 | Cotter Pin | 2 |



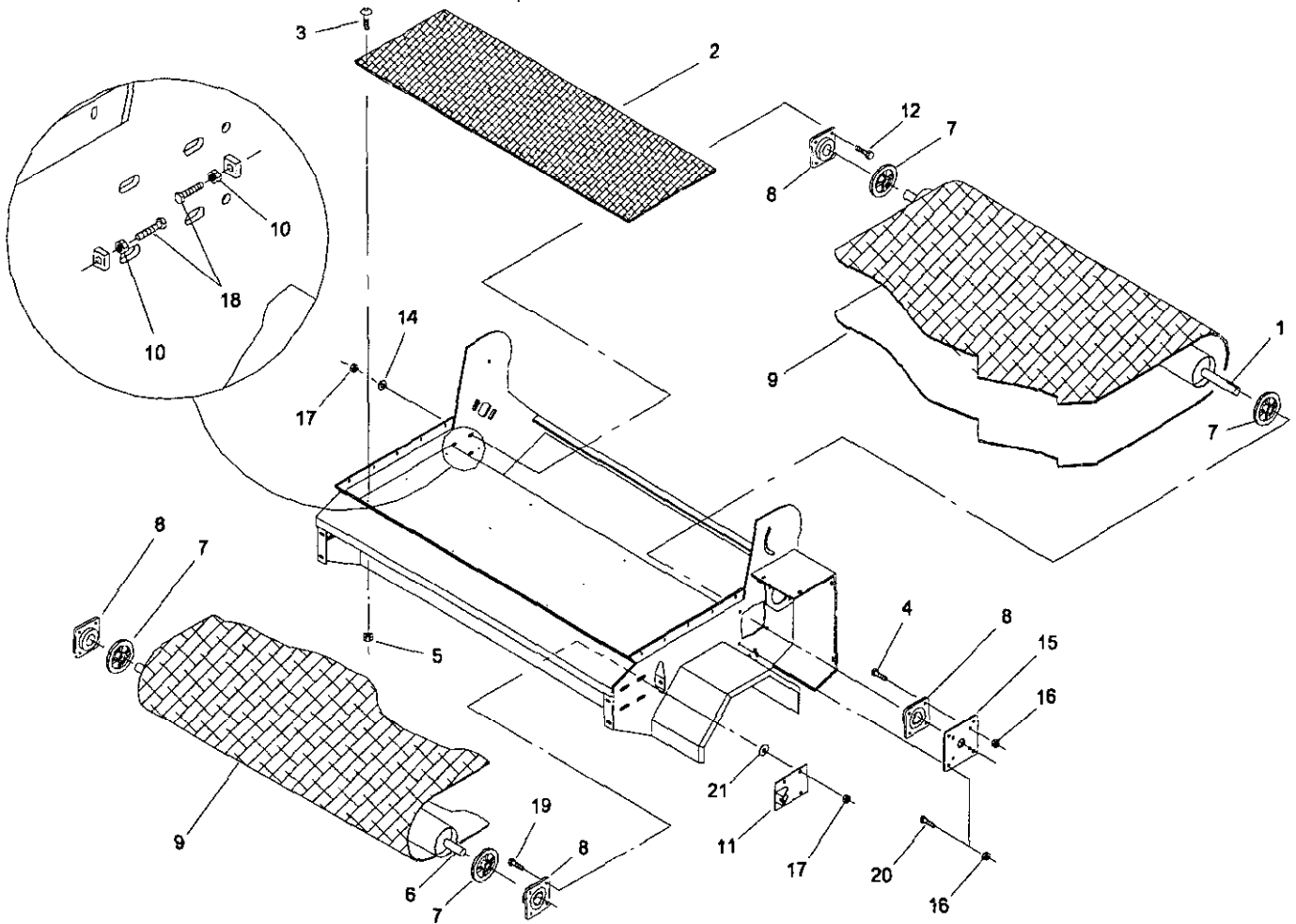
HYDRAULIC TANK ASSEMBLY

23-004F

| Ref. No. | Part No. | Description | No. Used |
|----------|-------------|---------------------|----------|
| 1 | 23-005-0171 | Hydraulic Tank | 1 |
| 2 | 323-6 | Capscrew - Hex Hd. | 4 |
| 3 | 3296-42 | Nut - ESNA Lock | 2 |
| 4 | 3290-357 | Nut - Whiz Lock Flg | 4 |
| 5 | 3256-4 | Flat Washer | 4 |
| 6 | 3256-2 | Flat Washer | 2 |
| 7 | 75-5190 | Decal - No Riders | 1 |
| 8 | 01-506-0250 | Decal - Danger | 1 |
| 9 | 62-7400 | Decal - Toro | 1 |
| 10 | 2412-74 | R-Clamp | 1 |
| 11 | 01-308-1590 | Hydraulic Valve | 1 |
| 12 | 322-5 | Capscrew - Hex Hd. | 3 |

| Ref. No. | Part No. | Description | No. Used |
|----------|-------------|---|----------|
| 13 | 3256-3 | Flat Washer | 2 |
| 14 | 3253-4 | Lock Washer | 2 |
| 15 | 3296-29 | Nut - ESNA Lock | 1 |
| 16 | 01-269-1530 | Valve Stem | 1 |
| 17 | 02-201-2170 | Cap | 1 |
| * | 23-002-0021 | Pressure Cap Assembly (Incl. Ref. #16, 17) | 1 |
| 18 | 2412-133 | R-Clamp | 2 |
| 19 | 74-0720 | Manual Tube | 1 |
| 20 | 321-6 | Capscrew - Hex Hd. | 2 |
| 21 | 3334-945 | Cable Tie | 4 |

* Not Illustrated



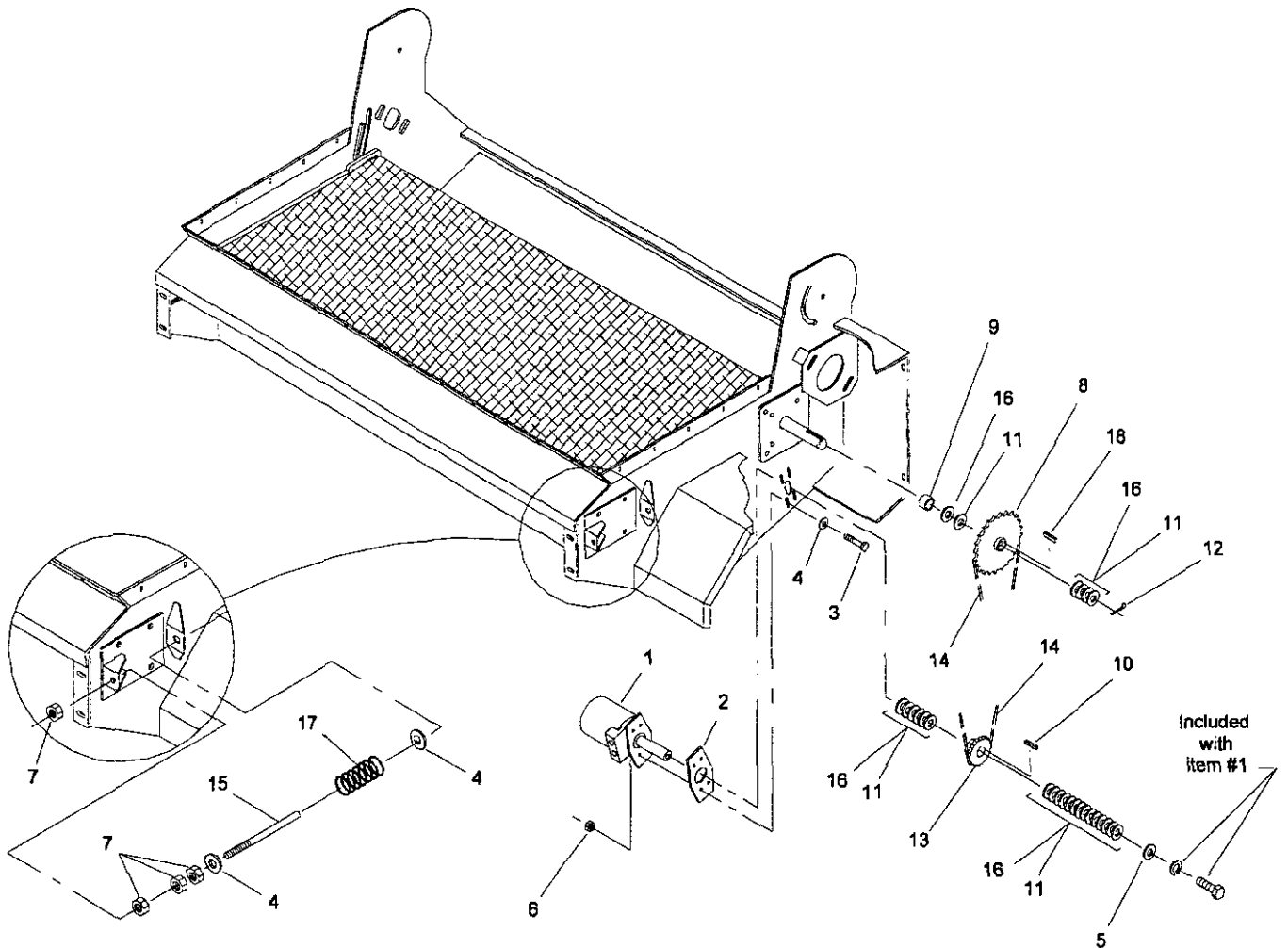
ROLLER ASSEMBLY

23-005F

| Ref. No. | Part No. | Description | No. Used |
|----------|-------------|--------------------------|----------|
| 1 | 23-005-0121 | Drive Roller | 1 |
| 2 | 23-004-0271 | Conveyor Top | 1 |
| 3 | 32122-28 | Truss Head Machine Screw | 12 |
| 4 | 325-5 | Capscrew - Hex Hd. | 4 |
| 5 | 3296-2 | Nut - ESNA Lock | 12 |
| 6 | 23-005-0111 | Idler Roller | 1 |
| 7 | 01-260-1790 | Sheave | 4 |
| 8 | 01-100-0180 | Bearing | 4 |
| 9 | 01-271-0670 | Conveyor Belt | 1 |
| * | 01-271-0360 | Pin - Lacing | 1 |
| 10 | 3217-7 | Hex Nut | 2 |

| Ref. No. | Part No. | Description | No. Used |
|----------|-------------|--------------------|----------|
| 11 | 23-005-0951 | Bearing Pull | 2 |
| 12 | 325-6 | Capscrew - Hex Hd. | 4 |
| 13 | 3253-7 | Lock Washer | 8 |
| 14 | 3256-26 | "SAE" Flat Washer | 8 |
| 15 | 23-004-0581 | Roller Cover | 1 |
| 16 | 3296-45 | Nut - ESNA Lock | 8 |
| 17 | 3296-23 | Nut - ESNA Lock | 12 |
| 18 | 67-1900 | Capscrew - Hex Hd. | 2 |
| 19 | 325-8 | Capscrew - Hex Hd. | 8 |
| 20 | 325-4 | Capscrew - Hex Hd. | 4 |
| 21 | 23-004-0721 | Belt Roller Washer | 8 |

* Not Illustrated



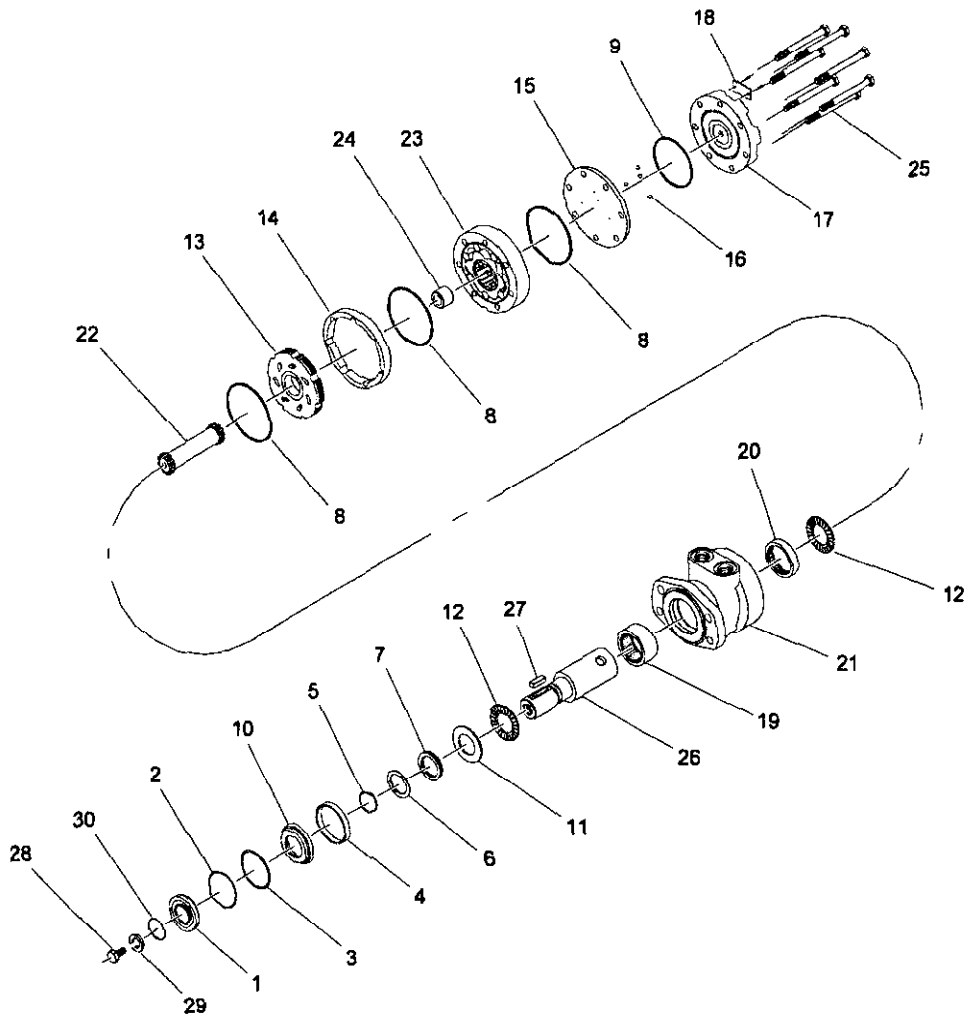
BELT DRIVE & ASSEMBLY

23-006F

| Ref. No. | Part No. | Description | No. Used |
|----------|-------------|--------------------|----------|
| 1 | 01-304-1190 | Hydraulic Motor | 1 |
| * | 01-304-1420 | Seal Kit | 1 |
| * | 01-304-1200 | Seal Kit | 1 |
| 2 | 18-204-0461 | Motor Spacer | 1 |
| 3 | 325-7 | Capscrew - Hex Hd. | 4 |
| 4 | 3256-6 | Flat Washer | 8 |
| 5 | 3256-7 | Flat Washer | 1 |
| 6 | 3296-23 | Nut - ESNA Lock | 4 |
| 7 | 3217-9 | Hex Nut | 8 |
| 8 | 01-262-0960 | Sprocket | 1 |
| 9 | 23-004-0751 | Sprocket Spacer | 1 |

| Ref. No. | Part No. | Description | No. Used |
|----------|-------------|-------------------|----------|
| 10 | 23-004-1091 | Key | 1 |
| 11 | 01-168-2014 | Machinery Bushing | 13(var) |
| 12 | 3272-25 | Cotter Pin | 1 |
| 13 | 01-262-1540 | Sprocket | 1 |
| 14 | 23-004-0821 | Drive Chain, #50 | 1 |
| * | 01-251-0020 | Offset Link, #50 | 1 |
| 15 | 23-004-0741 | Belt Tension Rod | 2 |
| 16 | 01-168-2010 | Machinery Bushing | 13(var) |
| 17 | 01-261-0400 | Spring | 2 |
| 18 | 10-7070 | Key | 1 |

* Not Illustrated



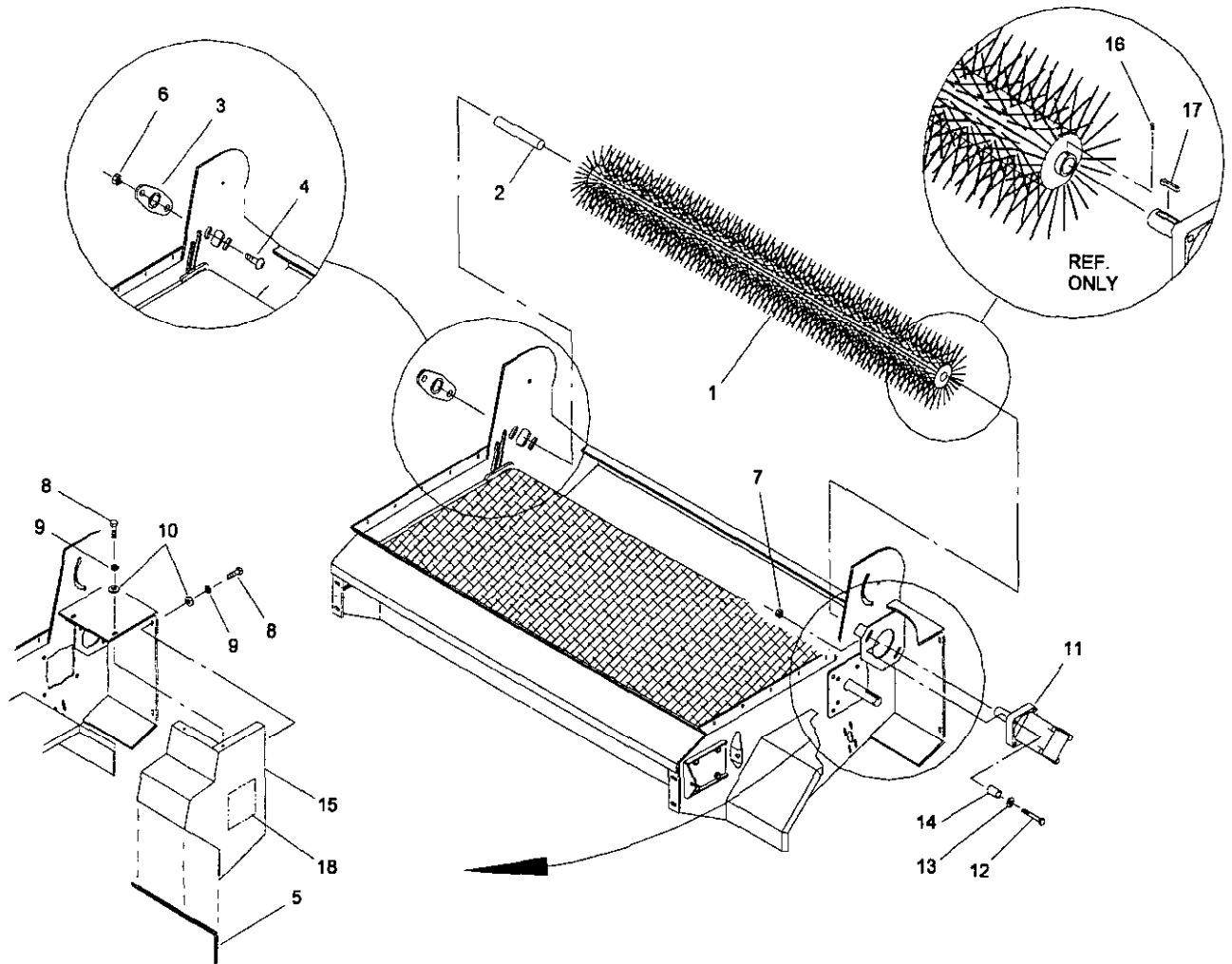
HYDRAULIC MOTOR - NO. 01-304-1190

HYDM1190

| Ref. No. | Part No. | Description | No. Used |
|----------|-------------|-------------------------|----------|
| 1 | | Dust Seal | 1 |
| 2 | | Snap Ring | 1 |
| 3 | | Backup Shim | 1 |
| 4 | | Lathe Cut Seal | 1 |
| 5 | | Backup Shim | 1 |
| 6 | | Teflon Backup | 1 |
| 7 | | Shaft Seal | 1 |
| 8 | | Body Seal | 3 |
| 9 | | Endcover Seal | 1 |
| * | 01-304-1420 | Seal Kit (Incl. #1 - 9) | 1 |
| 10 | | Seal Carrier | 1 |
| 11 | | Thrust Washer | 1 |
| * | 01-304-1200 | Seal Kit (Incl. #10,11) | 1 |
| 12 | 01-304-0660 | Thrust Bearing | 2 |
| 13 | 01-304-1560 | Manifold (CCW) | 1 |
| 14 | 01-304-1550 | Manifold Boot | 1 |
| 15 | | Balance Plate | 1 |
| 16 | | Ball (3/16" steel) | 4 |

| Ref. No. | Part No. | Description | No. Used |
|----------|-------------|----------------------------------|----------|
| * | 01-304-1570 | Balance Plate Kit (Incl. #15,16) | 1 |
| 17 | 01-304-1580 | Endcover | 1 |
| 18 | | I. D. Tag Assembly | 1 |
| 19 | | Roller Bearing | 1 |
| 20 | | Roller Bearing | 1 |
| 21 | | Housing | 1 |
| * | 01-304-0910 | Housing Kit (Incl. #19 - 21) | 1 |
| 22 | 01-304-0920 | Drive Link | 1 |
| 23 | 01-304-0930 | Rotor Set | 1 |
| 24 | 01-304-1210 | Drive Link Spacer | 1 |
| 25 | 01-304-0940 | Bolt Set (7) | 1 |
| 26 | | Shaft | 1 |
| 27 | | Shaft Key | 1 |
| 28 | | Bolt | 1 |
| 29 | | Lock Washer | 1 |
| 30 | | Wire Ring | 1 |
| * | 01-304-0460 | Shaft Kit (Incl. #26 - 30) | 1 |

* Not Illustrated



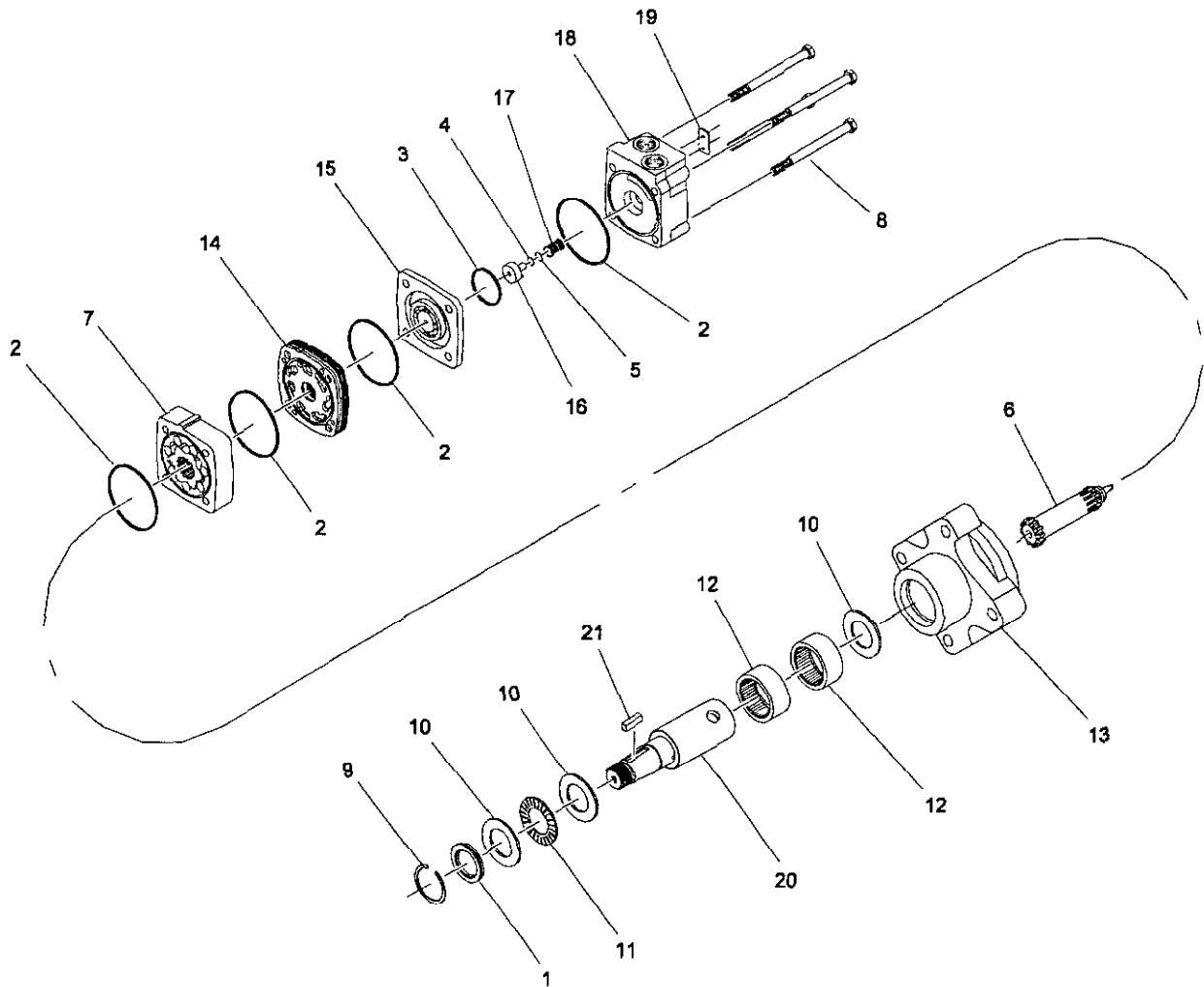
BRUSH ASSEMBLY

23-007F

| Ref. No. | Part No. | Description | No. Used |
|----------|-------------|----------------------------|----------|
| 1 | 01-286-0440 | Brush (Incl. Ref. #16, 17) | 1 |
| 2 | 23-004-0831 | Brush Shaft | 1 |
| 3 | 01-100-0160 | Bearing | 1 |
| 4 | 3231-25 | Carriage Bolt | 2 |
| 5 | 23-004-0931 | Rubber Seal | 1 |
| 6 | 3296-39 | Nut - ESNA Lock Fig | 2 |
| 7 | 32128-49 | Nut - Whiz Lock Fig | 2 |
| 8 | 322-3 | Capscrew - Hex Hd. | 4 |
| 9 | 3253-4 | Lock Washer | 4 |
| 10 | 3256-3 | Flat Washer | 4 |

| Ref. No. | Part No. | Description | No. Used |
|----------|-------------|--------------------|----------|
| 11 | 01-304-0980 | Hydraulic Motor | 1 |
| * | 01-304-1000 | Seal Kit | 1 |
| 12 | 325-14 | Capscrew - Hex Hd. | 2 |
| 13 | 3256-26 | "SAE" Flat Washer | 2 |
| 14 | 23-004-0851 | Motor Bolt Spacer | 2 |
| 15 | 23-005-0131 | Guard | 1 |
| 16 | 3245-20 | Set Screw | 3 |
| 17 | 5-7280 | Key | 1 |
| 18 | 01-506-0050 | Decal - Danger | 1 |

* Not Illustrated



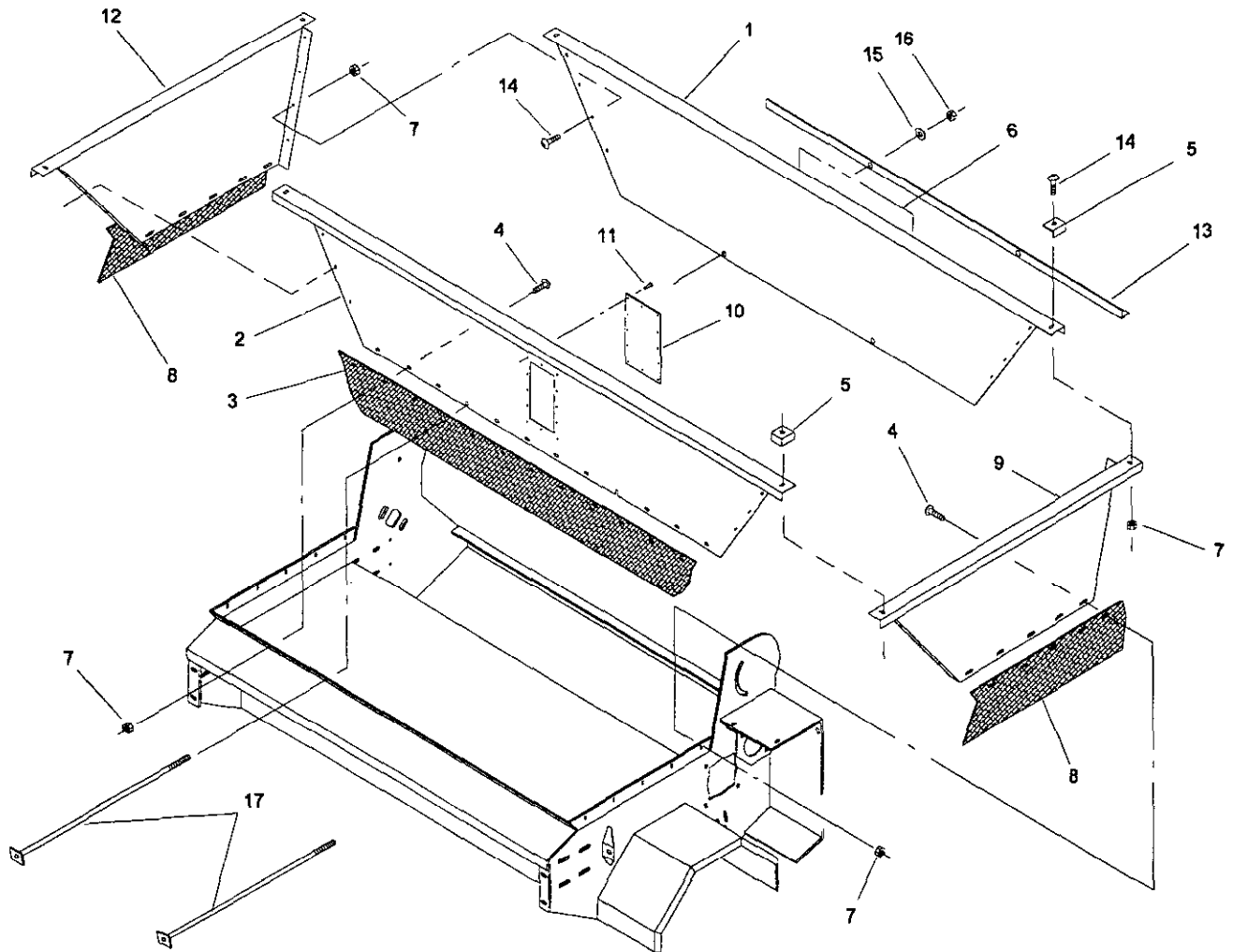
HYDRAULIC MOTOR - 01-304-0980

HYDM0980

| Ref. No. | Part No. | Description | No. Used |
|----------|-------------|-------------------------|----------|
| 1 | | Shaft Seal | 1 |
| 2 | | Body Seal | 4 |
| 3 | | Commutator Seal | 1 |
| 4 | | Teflon Backup Seal | 1 |
| 5 | | O-Ring Seal | 1 |
| * | 01-304-1000 | Seal Kit (Incl. #1 - 5) | 1 |
| 6 | 01-304-1010 | Drive Link | 1 |
| 7 | 01-304-1020 | Rotor Set | 1 |
| 8 | 01-304-1030 | Bolt Set (4) | 1 |
| 9 | 01-304-1040 | Snap Ring | 1 |
| 10 | 01-304-1050 | Thrust Washer | 3 |
| 11 | 01-304-1060 | Thrust Bearing | 1 |
| 12 | 01-304-1070 | Needle Bearing | 2 |
| 13 | | Housing | 1 |

| Ref. No. | Part No. | Description | No. Used |
|----------|-------------|--|----------|
| * | 01-304-1080 | Housing Bearing Kit (Incl. #10,12,13) | 1 |
| 14 | 01-304-1090 | Manifold | 1 |
| 15 | 01-304-1100 | Commutator Assembly | 1 |
| 16 | 01-304-1110 | Endcover Piston | 1 |
| 17 | 01-304-1120 | Piston Spring | 1 |
| 18 | | Endcover | 1 |
| * | 01-304-1130 | Endcover Kit (Incl. #2,4,5,16,17,18) | 1 |
| 19 | | I.D. Tag Assembly | 1 |
| 20 | | Shaft | 1 |
| 21 | | Shaft Key | 1 |
| * | 01-304-1180 | Shaft Kit (Incl. #20 - 21) | 1 |

* Not Illustrated

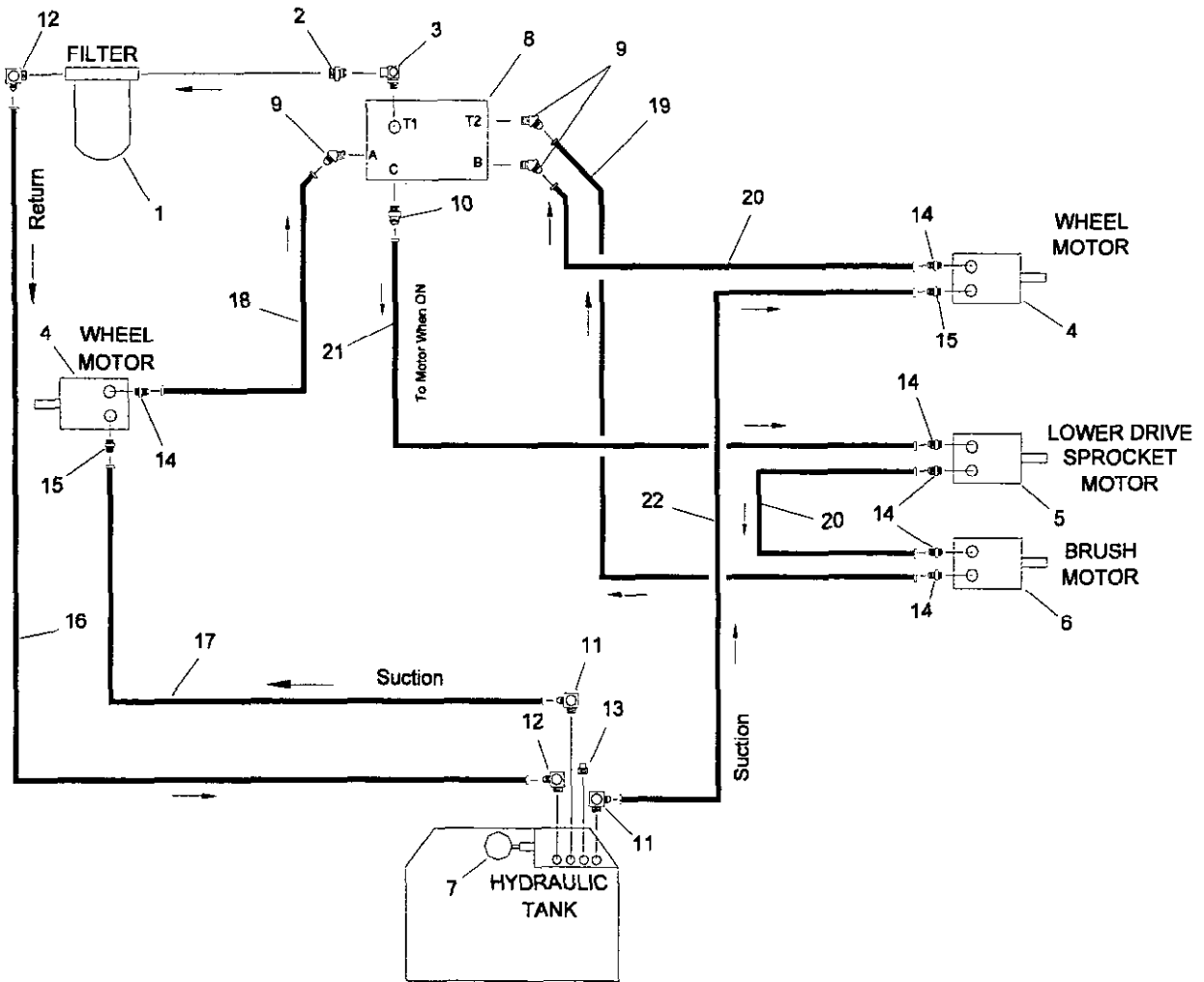


HOPPER ASSEMBLY

23-008F

| Ref. No. | Part No. | Description | No. Used |
|----------|-------------|---------------------|----------|
| 1 | 23-004-1001 | Hopper Back | 1 |
| 2 | 23-004-0541 | Hopper Front | 1 |
| 3 | 23-004-0801 | Skirt-long | 1 |
| 4 | 3229-2 | Carriage Bolt | 20 |
| 5 | 23-004-0971 | Corner Guard | 4 |
| 6 | 66-1210 | Decal - Toro | 1 |
| 7 | 32128-33 | Nut - Whiz Lock Flg | 40 |
| 8 | 23-004-0791 | Skirt-short | 2 |
| 9 | 23-004-0521 | Hopper Side - L.H. | 1 |

| Ref. No. | Part No. | Description | No. Used |
|----------|-------------|--------------------|----------|
| 10 | 23-004-0981 | Sight Glass | 1 |
| 11 | 3269-3 | Pop Rivet | 14 |
| 12 | 23-004-0871 | Hopper Side - R.H. | 1 |
| 13 | 23-004-1031 | Hopper Brace | 1 |
| 14 | 3229-1 | Carriage Bolt | 20 |
| 15 | 3256-4 | Flat Washer | 2 |
| 16 | 3296-39 | Nut - ESNA Lock | 2 |
| 17 | 23-005-1101 | Support Rod | 2 |



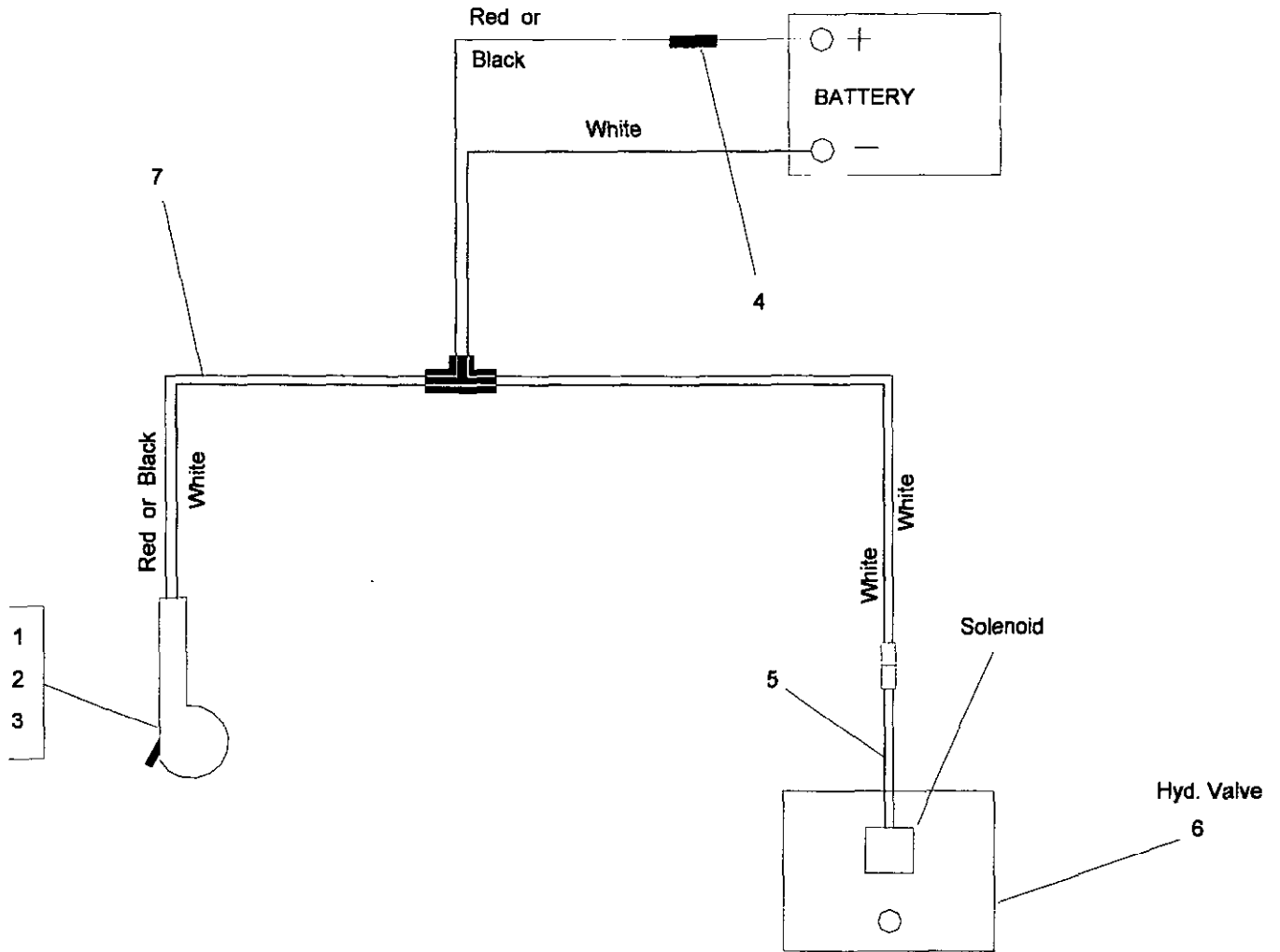
HYDRAULIC SCHEMATIC

23-012

| Ref. No. | Part No. | Description | No. Used |
|----------|-------------|-----------------|----------|
| 1 | 01-316-0210 | Filter Assembly | 1 |
| * | 01-315-0090 | Filter Head | 1 |
| * | 01-317-0240 | Filter Element | 1 |
| 2 | 01-201-1370 | Fitting | 1 |
| 3 | 01-201-4530 | Fitting | 1 |
| 4 | 01-304-0990 | Hyd. Motor | 2 |
| * | 01-304-1000 | Seal Kit | 1 |
| 5 | 01-304-1190 | Hyd. Motor | 1 |
| * | 01-304-1420 | Seal Kit | 1 |
| * | 01-304-1200 | Seal Kit | 1 |
| 6 | 01-304-0980 | Hyd. Motor | 1 |
| * | 01-304-1000 | Seal Kit | 1 |
| 7 | 01-303-0110 | Gauge | 1 |
| 8 | 01-308-1590 | Hyd. Valve | 1 |

| Ref. No. | Part No. | Description | No. Used |
|----------|-------------|-------------|----------|
| 9 | 01-201-4700 | Fitting | 3 |
| 10 | 01-201-0630 | Fitting | 1 |
| 11 | 01-201-2160 | Fitting | 2 |
| 12 | 01-201-1220 | Fitting | 2 |
| 13 | 01-451-0160 | Pipe Plug | 1 |
| 14 | 01-201-1350 | Fitting | 6 |
| 15 | 01-201-2130 | Fitting | 2 |
| 16 | 01-312-5470 | Hyd. Hose | 1 |
| 17 | 01-312-5450 | Hyd. Hose | 1 |
| 18 | 01-312-2220 | Hyd. Hose | 1 |
| 19 | 01-312-5490 | Hyd. Hose | 1 |
| 20 | 01-312-2250 | Hyd. Hose | 2 |
| 21 | 01-312-5500 | Hyd. Hose | 1 |
| 22 | 01-312-5480 | Hyd. Hose | 1 |

* Not Illustrated

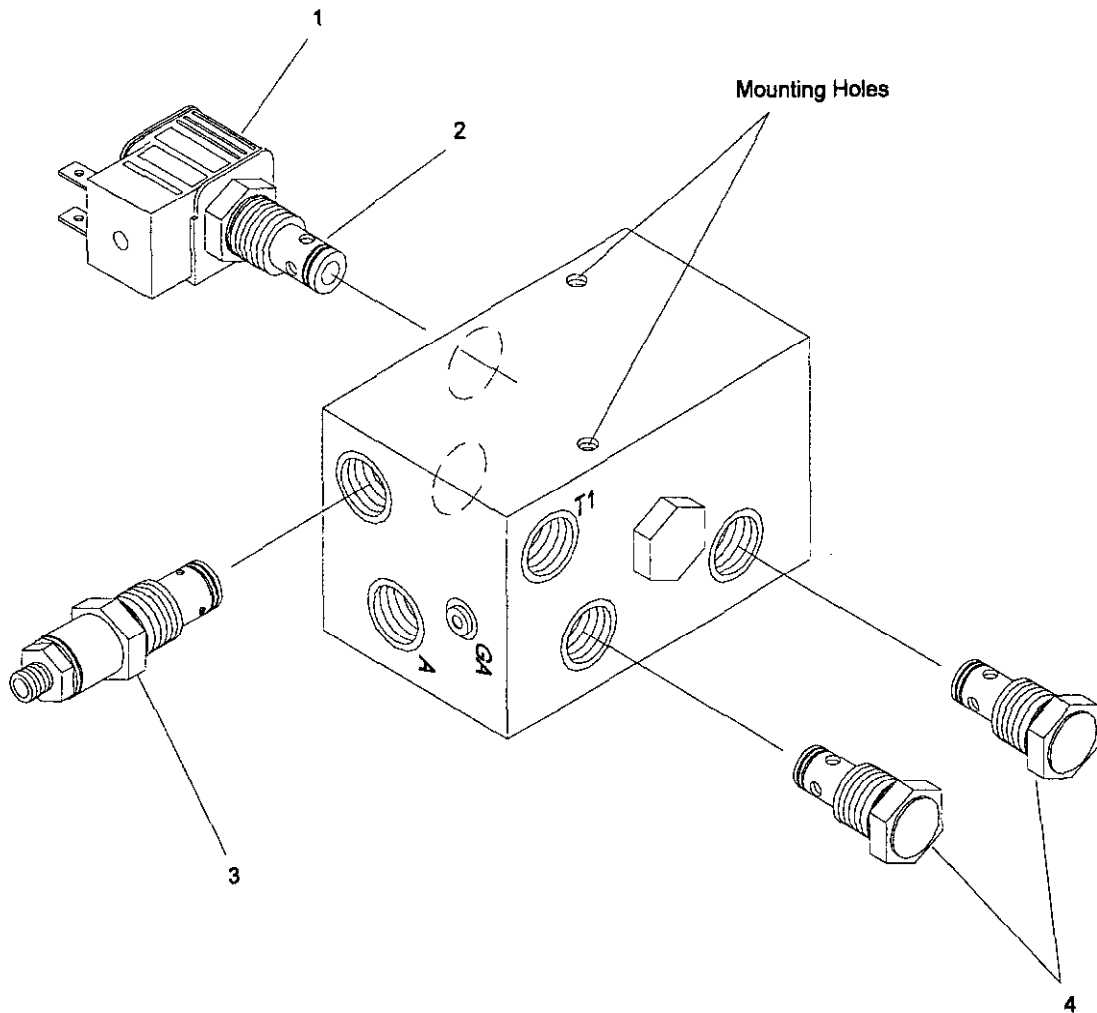


ELECTRICAL SCHEMATIC

23-013

| Ref. No. | Part No. | Description | No. Used |
|----------|-------------|-------------|----------|
| 1 | 01-603-0750 | Switch | 1 |
| 2 | 01-603-0760 | Boot | 1 |
| 3 | 01-603-0770 | Switch Box | 1 |
| 4 | 01-612-0520 | Fuse | 1 |

| Ref. No. | Part No. | Description | No. Used |
|----------|-------------|--|----------|
| 5 | 01-606-0250 | Wiring Harness, short half | 1 |
| 6 | 01-308-1010 | Hydraulic Valve | 1 |
| 7 | 01-606-0220 | Wiring Harness, complete (Includes Ref. #1,2,3,4,5) | 1 |



HYDRAULIC VALVE - NO. 01-308-1590

VLE-1590

| Ref. No. | Part No. | Description | No. Used |
|----------|-------------|----------------|----------|
| 1 | 01-308-1740 | Solenoid Coil | 1 |
| 2 | 01-308-1610 | Solenoid Valve | 1 |

| Ref. No. | Part No. | Description | No. Used |
|----------|-------------|------------------------|----------|
| 3 | 01-308-1720 | Relief Valve (1100psi) | 1 |
| 4 | 01-308-1730 | Check Valve | 2 |

PART NUMBER INDEX

| Part No. | Description | Pg. No. | Ref. No. | Qty. | Part No. | Description | Pg. No. | Ref. No. | Qty. |
|-------------|---------------------|---------|----------|------|-------------|-------------------------|---------|----------|------|
| 01-100-0160 | Bearing | 9 | 3 | 1 | 01-304-1090 | Manifold | 3 | 14 | 1 |
| 01-100-0180 | Bearing | 6 | 8 | 4 | 01-304-1100 | Commutator Assembly | 10 | 15 | 1 |
| 01-158-2040 | Lug Bolt | 2 | 21 | 10 | 01-304-1100 | Commutator Assembly | 3 | 15 | 1 |
| 01-168-1210 | Machinery Bushing | 2 | 17 | 14 | 01-304-1110 | Endcover Piston | 10 | 16 | 1 |
| 01-168-2010 | Machinery Bushing | 7 | 16 | 13 | 01-304-1110 | Endcover Piston | 3 | 16 | 1 |
| 01-168-2014 | Machinery Bushing | 7 | 11 | 13 | 01-304-1120 | Piston Spring | 10 | 17 | 1 |
| 01-190-1210 | Slotted Nut | 2 | 9 | 2 | 01-304-1120 | Piston Spring | 3 | 17 | 1 |
| 01-201-0630 | Fitting | 12 | 10 | 1 | 01-304-1130 | Endcover Kit | 10 | * | 1 |
| 01-201-1220 | Fitting | 12 | 12 | 2 | 01-304-1130 | Endcover Kit | 3 | * | 1 |
| 01-201-1350 | Fitting | 12 | 14 | 6 | 01-304-1150 | Drive Link | 3 | 6 | 1 |
| 01-201-1370 | Fitting | 12 | 2 | 1 | 01-304-1160 | Rotor Set | 3 | 7 | 1 |
| 01-201-2130 | Fitting | 12 | 15 | 2 | 01-304-1170 | Bolt Set | 3 | 8 | 1 |
| 01-201-2160 | Fitting | 12 | 11 | 2 | 01-304-1180 | Shaft Kit | 10 | * | 1 |
| 01-201-4530 | Fitting | 12 | 3 | 1 | 01-304-1180 | Shaft Kit | 3 | * | 1 |
| 01-201-4700 | Fitting | 12 | 9 | 3 | 01-304-1190 | Hyd. Motor | 12 | 5 | 1 |
| 01-215-0100 | Grease Fitting | 2 | * | 4 | 01-304-1190 | Hydraulic Motor | 7 | 1 | 1 |
| 01-251-0020 | Offset Link | 7 | * | 1 | 01-304-1200 | Seal Kit | 12 | * | 1 |
| 01-256-0200 | Knob | 4 | 4 | 1 | 01-304-1200 | Seal Kit | 7 | * | 1 |
| 01-260-1790 | Sheave | 6 | 7 | 4 | 01-304-1200 | Seal Kit | 8 | * | 1 |
| 01-261-0400 | Spring | 7 | 17 | 2 | 01-304-1210 | Drive Link Spacer | 8 | 24 | 1 |
| 01-262-0960 | Sprocket | 7 | 8 | 1 | 01-304-1240 | Pack Nut | 2 | 12 | 2 |
| 01-262-1540 | Sprocket | 7 | 13 | 1 | 01-304-1240 | Pack Nut | 3 | 22 | 1 |
| 01-269-0060 | Axle Spacer | 2 | 1 | 8 | 01-304-1420 | Seal Kit | 12 | * | 1 |
| 01-269-0320 | Tire | 2 | 22 | 2 | 01-304-1420 | Seal Kit | 7 | * | 1 |
| 01-269-0350 | Tire | 2 | 6 | 4 | 01-304-1420 | Seal Kit | 8 | * | 1 |
| 01-269-0360 | Wheel | 2 | 18 | 4 | 01-304-1550 | Manifold Boot | 8 | 14 | 1 |
| 01-269-1020 | Wheel | 2 | 20 | 2 | 01-304-1560 | Manifold (CCW) | 8 | 13 | 1 |
| 01-269-1530 | Valve Stem | 5 | 16 | 1 | 01-304-1570 | Balance Plate Kit | 8 | * | 1 |
| 01-269-2540 | Hub | 2 | 15 | 2 | 01-304-1580 | Endcover | 8 | 17 | 1 |
| 01-271-0360 | Pin - Lacing | 6 | * | 1 | 01-308-1590 | Hydraulic Valve | 12 | 8 | 1 |
| 01-271-0670 | Conveyor Belt | 6 | 9 | 1 | 01-308-1590 | Hydraulic Valve | 13 | 6 | 1 |
| 01-286-0440 | Brush | 9 | 1 | 1 | 01-308-1590 | Hydraulic Valve | 5 | 11 | 1 |
| 01-303-0110 | Gauge | 12 | 7 | 1 | 01-308-1610 | Solenoid Valve | 14 | 2 | 1 |
| 01-304-0460 | Shaft Kit | 8 | * | 1 | 01-308-1720 | Relief Valve | 14 | 3 | 1 |
| 01-304-0660 | Thrust Bearing | 8 | 12 | 2 | 01-308-1730 | Check Valve | 14 | 4 | 2 |
| 01-304-0910 | Housing Kit | 8 | * | 1 | 01-308-1740 | Solenoid Coil | 14 | 1 | 1 |
| 01-304-0920 | Drive Link | 8 | 22 | 1 | 01-312-2220 | Hyd. Hose | 12 | 18 | 1 |
| 01-304-0930 | Rotor Set | 8 | 23 | 1 | 01-312-2250 | Hyd. Hose | 12 | 20 | 2 |
| 01-304-0940 | Bolt Set | 8 | 25 | 1 | 01-312-5450 | Hyd. Hose | 12 | 17 | 1 |
| 01-304-0980 | Hyd. Motor | 12 | 6 | 1 | 01-312-5470 | Hyd. Hose | 12 | 16 | 1 |
| 01-304-0980 | Hydraulic Motor | 9 | 11 | 1 | 01-312-5480 | Hyd. Hose | 12 | 22 | 1 |
| 01-304-0990 | Hyd. Motor | 12 | 4 | 2 | 01-312-5490 | Hyd. Hose | 12 | 19 | 1 |
| 01-304-0990 | Hydraulic Motor | 2 | 14 | 2 | 01-312-5500 | Hyd. Hose | 12 | 21 | 1 |
| 01-304-1000 | Seal Kit | 10 | * | 1 | 01-315-0090 | Filter Head | 12 | * | 1 |
| 01-304-1000 | Seal Kit | 12 | * | 1 | 01-316-0210 | Filter Assembly | 12 | 1 | 1 |
| 01-304-1000 | Seal Kit | 2 | * | 1 | 01-317-0240 | Filter Element | 12 | * | 1 |
| 01-304-1000 | Seal Kit | 3 | * | 1 | 01-405-0460 | Seal | 2 | 2 | 8 |
| 01-304-1000 | Seal Kit | 9 | * | 1 | 01-451-0160 | Pipe Plug | 12 | 13 | 1 |
| 01-304-1010 | Drive Link | 10 | 6 | 1 | 01-506-0050 | Decal - Danger | 9 | 18 | 1 |
| 01-304-1020 | Rotor Set | 10 | 7 | 1 | 01-506-0210 | Decal - Height Adj. | 4 | 13 | 1 |
| 01-304-1030 | Bolt Set | 10 | 8 | 1 | 01-506-0240 | Decal - Warning | 1 | 8 | 2 |
| 01-304-1040 | Snap Ring | 10 | 9 | 1 | 01-506-0250 | Decal - Danger | 5 | 8 | 1 |
| 01-304-1040 | Snap Ring | 3 | 9 | 1 | 01-506-0690 | Decal - Topdresser 2300 | 1 | 6 | 2 |
| 01-304-1050 | Thrust Washer | 10 | 10 | 3 | 01-603-0750 | Switch | 13 | 1 | 1 |
| 01-304-1050 | Thrust Washer | 3 | 10 | 3 | 01-603-0760 | Boot | 13 | 2 | 1 |
| 01-304-1060 | Thrust Bearing | 10 | 11 | 1 | 01-603-0770 | Switch Box | 13 | 3 | 1 |
| 01-304-1060 | Thrust Bearing | 3 | 11 | 1 | 01-606-0220 | Wiring Harness | 13 | 7 | 1 |
| 01-304-1070 | Needle Bearing | 10 | 12 | 2 | 01-606-0250 | Wiring Harness | 13 | 5 | 1 |
| 01-304-1070 | Needle Bearing | 3 | 12 | 2 | 01-612-0520 | Fuse | 13 | 4 | 1 |
| 01-304-1080 | Housing Bearing Kit | 10 | * | 1 | 02-201-2170 | Cap | 5 | 17 | 1 |
| 01-304-1080 | Housing Bearing Kit | 3 | * | 1 | 10-7070 | Key | 7 | 18 | 1 |
| 01-304-1090 | Manifold | 10 | 14 | 1 | 18-204-0461 | Motor Spacer | 7 | 2 | 1 |

* Not Illustrated

PART NUMBER INDEX

| Part No. | Description | Pg. No. | Ref. No. | Qty. | Part No. | Description | Pg. No. | Ref. No. | Qty. |
|-------------|--------------------------|---------|----------|------|-------------|----------------------|---------|----------|------|
| 23-002-0021 | Pressure Cap Assembly | 5 | * | 1 | 3245-20 | Set Screw | 9 | 16 | 3 |
| 23-004-0221 | Gate Seal | 4 | 9 | 1 | 325-10 | Capscrew - Hex Hd. | 2 | 3 | 8 |
| 23-004-0241 | Axle Bracket | 2 | 8 | 2 | 325-14 | Capscrew - Hex Hd. | 1 | 3 | 2 |
| 23-004-0271 | Conveyor Top | 6 | 2 | 1 | 325-14 | Capscrew - Hex Hd. | 9 | 12 | 2 |
| 23-004-0521 | Hopper Side - L.H. | 11 | 9 | 1 | 325-4 | Capscrew - Hex Hd. | 6 | 20 | 4 |
| 23-004-0541 | Hopper Front | 11 | 2 | 1 | 325-5 | Capscrew - Hex Hd. | 4 | 3 | 2 |
| 23-004-0581 | Roller Cover | 6 | 15 | 1 | 325-5 | Capscrew - Hex Hd. | 6 | 4 | 4 |
| 23-004-0721 | Belt Roller Washer | 6 | 21 | 8 | 325-6 | Capscrew - Hex Hd. | 6 | 12 | 4 |
| 23-004-0721 | Plastic Washer | 4 | 5 | 2 | 325-7 | Capscrew - Hex Hd. | 7 | 3 | 4 |
| 23-004-0741 | Belt Tension Rod | 7 | 15 | 2 | 325-8 | Capscrew - Hex Hd. | 6 | 19 | 8 |
| 23-004-0751 | Sprocket Spacer | 7 | 9 | 1 | 3253-4 | Lock Washer | 5 | 14 | 2 |
| 23-004-0791 | Skirt-short | 11 | 8 | 2 | 3253-4 | Lock Washer | 9 | 9 | 4 |
| 23-004-0801 | Skirt-long | 11 | 3 | 1 | 3253-7 | Lock Washer | 6 | 13 | 8 |
| 23-004-0821 | Drive Chain | 7 | 14 | 1 | 3256-2 | Flat Washer | 5 | 6 | 2 |
| 23-004-0831 | Brush Shaft | 9 | 2 | 1 | 3256-26 | "SAE" Flat Washer | 2 | 19 | 8 |
| 23-004-0851 | Motor Bolt Spacer | 9 | 14 | 2 | 3256-26 | "SAE" Flat Washer | 4 | 7 | 11 |
| 23-004-0871 | Hopper Side - R.H. | 11 | 12 | 1 | 3256-26 | "SAE" Flat Washer | 6 | 14 | 8 |
| 23-004-0931 | Rubber Seal | 9 | 5 | 1 | 3256-26 | "SAE" Flat Washer | 9 | 13 | 2 |
| 23-004-0971 | Corner Guard | 11 | 5 | 4 | 3256-3 | Flat Washer | 5 | 13 | 2 |
| 23-004-0981 | Sight Glass | 11 | 10 | 1 | 3256-3 | Flat Washer | 9 | 10 | 4 |
| 23-004-1001 | Hopper Back | 11 | 1 | 1 | 3256-4 | Flat Washer | 11 | 15 | 2 |
| 23-004-1021 | Gate Rod | 4 | 17 | 2 | 3256-4 | Flat Washer | 2 | 16 | 2 |
| 23-004-1031 | Hopper Brace | 11 | 13 | 1 | 3256-4 | Flat Washer | 5 | 5 | 4 |
| 23-004-1041 | Slide | 4 | 11 | 2 | 3256-6 | Flat Washer | 1 | 4 | 4 |
| 23-004-1061 | Adjustment Lug-long | 4 | 15 | 1 | 3256-6 | Flat Washer | 4 | 14 | 5 |
| 23-004-1091 | Key | 7 | 10 | 1 | 3256-6 | Flat Washer | 7 | 4 | 8 |
| 23-005-0103 | Main Frame | 1 | 1 | 1 | 3256-7 | Flat Washer | 7 | 5 | 1 |
| 23-005-0111 | Idler Roller | 6 | 6 | 1 | 3269-20 | Pop Rivet | 4 | 10 | 26 |
| 23-005-0121 | Drive Roller | 6 | 1 | 1 | 3269-3 | Pop Rivet | 11 | 11 | 14 |
| 23-005-0131 | Guard | 9 | 15 | 1 | 3272-11 | Cotter Pin | 4 | 18 | 2 |
| 23-005-0141 | Gate Control Arm | 4 | 1 | 1 | 3272-15 | Cotter Pin | 2 | 10 | 2 |
| 23-005-0151 | Axle | 2 | 7 | 2 | 3272-25 | Cotter Pin | 7 | 12 | 1 |
| 23-005-0161 | Hitch | 1 | 2 | 1 | 3290-357 | Nut - Whiz Lock Flg | 5 | 4 | 4 |
| 23-005-0171 | Hydraulic Tank | 5 | 1 | 1 | 3296-2 | Nut - ESNA Lock | 6 | 5 | 12 |
| 23-005-0951 | Bearing Pull | 6 | 11 | 2 | 3296-23 | Nut - ESNA Lock | 1 | 5 | 2 |
| 23-005-1101 | Support Rod | 11 | 17 | 2 | 3296-23 | Nut - ESNA Lock | 2 | 5 | 8 |
| 23-005-1111 | Gate | 4 | 8 | 1 | 3296-23 | Nut - ESNA Lock | 4 | 16 | 4 |
| 2412-133 | R-Clamp | 5 | 18 | 2 | 3296-23 | Nut - ESNA Lock | 6 | 17 | 12 |
| 2412-74 | R-Clamp | 5 | 10 | 1 | 3296-23 | Nut - ESNA Lock | 7 | 6 | 4 |
| 254-78 | Bearing Cone | 2 | 4 | 8 | 3296-29 | Nut - ESNA Lock | 5 | 15 | 1 |
| 321-6 | Capscrew - Hex Hd. | 5 | 20 | 2 | 3296-39 | Nut - ESNA Lock | 11 | 16 | 2 |
| 32122-28 | Truss Head Machine Screw | 6 | 3 | 12 | 3296-39 | Nut - ESNA Lock | 2 | 13 | 2 |
| 32128-33 | Nut - Whiz Lock Flg | 11 | 7 | 40 | 3296-39 | Nut - ESNA Lock Flg | 9 | 6 | 2 |
| 32128-49 | Nut - Whiz Lock Flg | 9 | 7 | 2 | 3296-42 | Nut - ESNA Lock | 5 | 3 | 2 |
| 32153-5 | Nut - Side Lock | 4 | 6 | 1 | 3296-45 | Nut - ESNA Lock | 6 | 16 | 8 |
| 3217-7 | Hex Nut | 6 | 10 | 2 | 3334-945 | Cable Tie | 5 | 21 | 4 |
| 3217-9 | Hex Nut | 7 | 7 | 8 | 5-7280 | Key | 9 | 17 | 1 |
| 3218-5 | Jam Nut | 4 | 2 | 4 | 56-104-0301 | Adjustment Lug-short | 4 | 12 | 3 |
| 322-3 | Capscrew - Hex Hd. | 9 | 8 | 4 | 62-7400 | Decal - Toro | 5 | 9 | 1 |
| 322-5 | Capscrew - Hex Hd. | 5 | 12 | 3 | 66-1210 | Decal - Toro | 11 | 6 | 1 |
| 3229-1 | Carriage Bolt | 11 | 14 | 20 | 67-1900 | Capscrew - Hex Hd. | 6 | 18 | 2 |
| 3229-2 | Carriage Bolt | 11 | 4 | 20 | 74-0720 | Manual Tube | 5 | 19 | 1 |
| 323-6 | Capscrew - Hex Hd. | 2 | 11 | 2 | 75-5190 | Decal - No Riders | 1 | 7 | 2 |
| 323-6 | Capscrew - Hex Hd. | 5 | 2 | 4 | 75-5190 | Decal - No Riders | 5 | 7 | 1 |
| 3231-25 | Carriage Bolt | 9 | 4 | 2 | | | | | |

* Not Illustrated

PRODUCT CHANGES

In an effort to make improvements available to TORO owners as quickly as possible minor changes are incorporated into Toro's products from time to time that do not become immediately shown in the Parts Catalog. If such a change has been made in your unit which is not reflected in your manual see your TORO Distributor or an Authorized Service Dealer for information and part numbers.

IDENTIFICATION & ORDERING

MODEL AND NUMBERS

The Topdresser 2300 has two identification numbers; a model number and a serial number. The two numbers are stamped on a plate which is located on the main frame. In any correspondence concerning the Topdresser 2300, supply model and serial numbers to assure that correct information and replacement parts are obtained.

To order replacement parts from your TORO Distributor or an Authorized Service Dealer, supply the following information:

1. Model and serial number of the unit.
2. Part number description and the quantity of part (s) desired.

NOTE: Do not order by reference number if a parts catalog is being used: use the PART NUMBER.

TABLE OF CONTENTS

| Description | Page | Description | Page |
|---|------|---|---------|
| Tongue Assembly | 1 | Brush Assembly | 9 |
| Wheel Assembly | 2 | Hydraulic Motor - No. 01-304-0980 | 10 |
| Hydraulic Motor - No. 01-304-0990 | 3 | Hopper Assembly | 11 |
| Gate Control Assembly | 4 | Hydraulic Schematic | 12 |
| Hydraulic Tank Assembly | 5 | Electrical Schematic | 13 |
| Roller Assembly | 6 | Hydraulic Valve - No. 01-308-1590 | 14 |
| Belt Drive and Tension | 7 | Hydraulic Valve - No. 01-308-1600 | 15 |
| Hydraulic Motor - No. 01-304-1190 | 8 | Part Number Index | 16 - 18 |

NOTES

NOTES

