

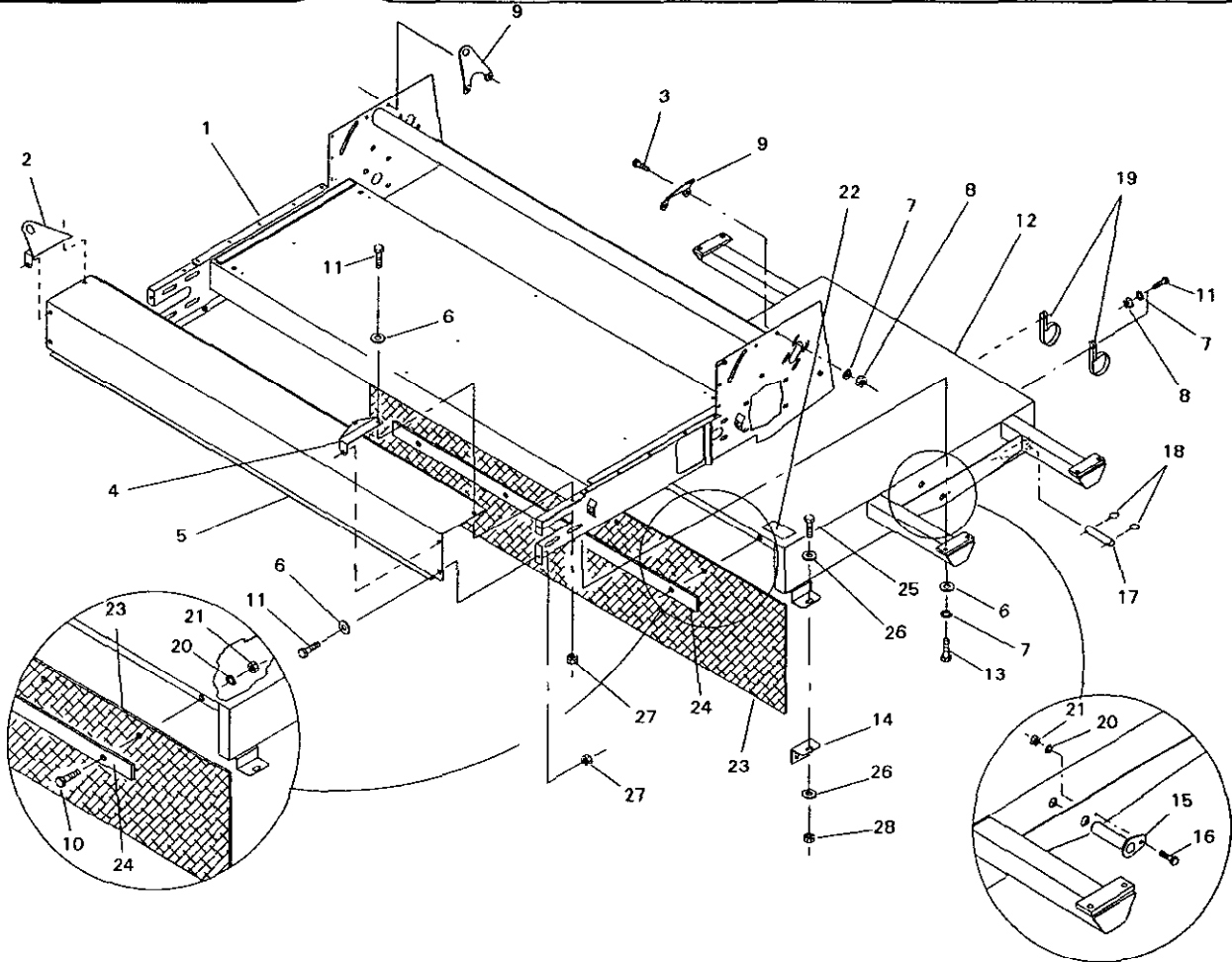


MODEL NO. 44220 - 50001 & UP

PARTS CATALOG

TOPDRESSER 1800

ATTACHMENT FOR WORKMAN™ 3000 SERIES

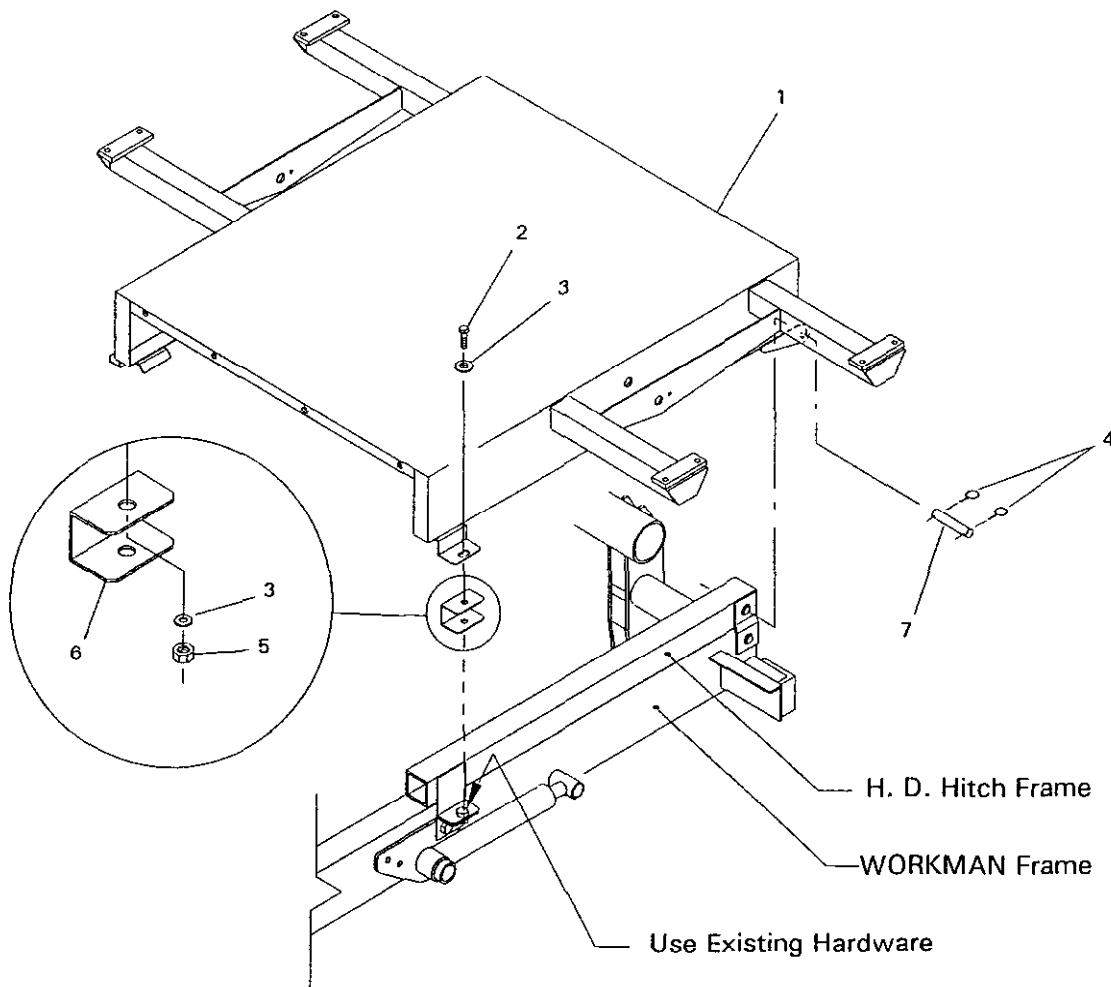


BASE & FRAME ASSEMBLY

1800-003

Ref. No.	Part No.	Description	No. Used
1	92-4350	Frame - Topdresser	1
2	92-4364	Bracket - RH Front Lift	1
3	323-6	Capscrew - Hex Hd.	4
4	92-4363	Bracket - LH Front Lift	1
5	92-4316	End - Frame	1
6	3256-4	Flat Washer	14
7	3253-5	Lock Washer	14
8	3217-7	Hex Nut	6
9	92-4362	Bracket - Rear Lift	2
10	321-6	Capscrew - Hex Hd.	4
11	323-4	Capscrew - Hex Hd.	8
12	92-4351	Base Mounting	1
13	323-7	Capscrew - Hex Hd.	8
14	92-2667	Bracket - Attachment Mount	2

Ref. No.	Part No.	Description	No. Used
15	92-4459	Pin - Cylinder	2
16	321-4	Capscrew - Hex Hd.	2
17	92-1233	Pin - Clevis	2
18	92-1298	Pin - Lynch	4
19	92-4372	Hose Retainer	2
20	3253-3	Lock Washer	6
21	3217-5	Hex Nut	6
22	01-506-0430	Decal - Replacement Manual	1
23	92-4491	Cover - Rubber	1
24	92-4492	Clamp - Rubber	1
25	325-4	Capscrew - Hex Hd.	2
26	3256-26	"SAE" Flat Washer	4
27	3296-39	Lock Nut	6
28	3296-25	Lock Nut	2



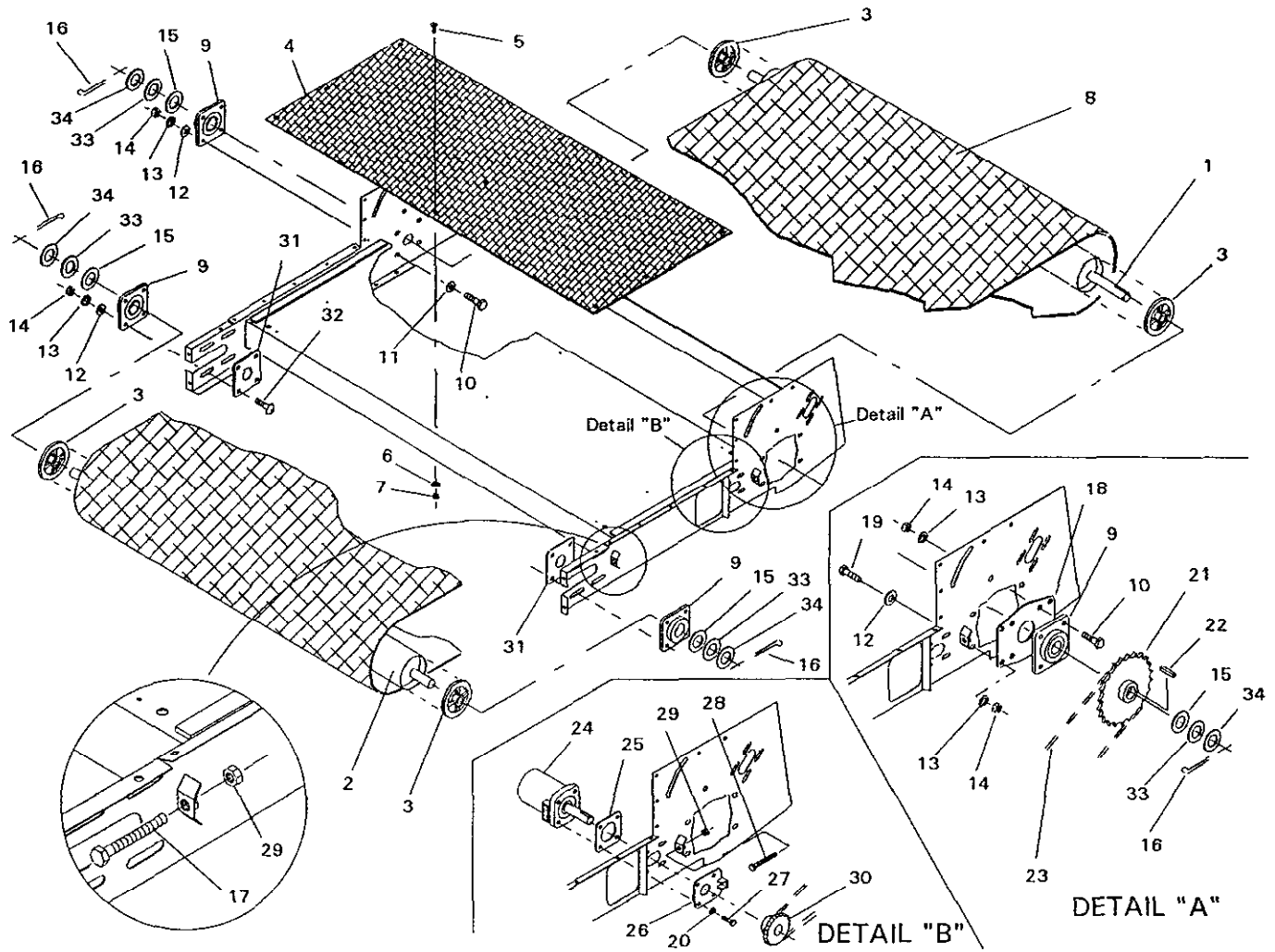
BASE MOUNTING

For Units w/H.D. Hitch Frame

1800-010

Ref. No.	Part No.	Description	No. Used
1	92-4351	Base Mounting	1
2	325-4	Capscrew - Hex Hd.	2
3	3256-26	"SAE" Flat Washer	4
4	92-1298	Pin - Lynch	4

Ref. No.	Part No.	Description	No. Used
5	3296-25	Lock Nut	2
6	92-4576	Spacer - Mount	2
7	92-1233	Pin - Clevis	2

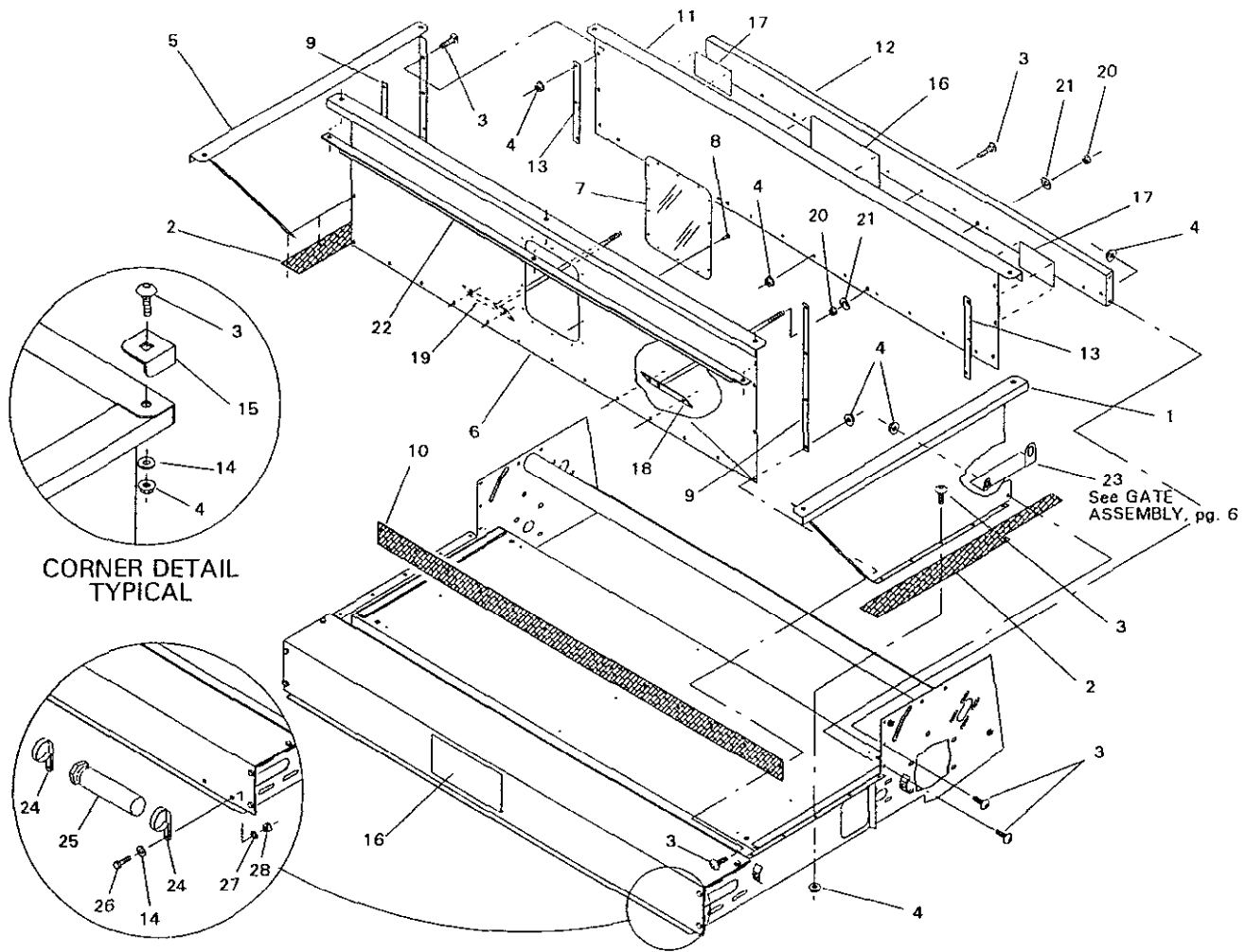


ROLLER ASSEMBLY

1800-001

Ref. No.	Part No.	Description	No. Used	Ref. No.	Part No.	Description	No. Used
1	92-4354	Roller - Drive	1	19	325-4	Capscrew - Hex Hd.	4
2	92-4355	Roller - Idler	1	20	3253-5	Lock Washer	4
3	01-260-1790	Sheave	4	21	01-262-0960	Sprocket - Drive Roller	1
4	92-4305	Top - Slide Bed	1	22	56-004-2401	Key - Sq.	1
5	01-158-0280	Truss Head Machine Screw	9	23	92-4370	Chain - Drive	1
6	3253-2	Lock Washer	9	*	01-251-0020	#50 Half Link	1
7	3217-26	Hex Nut	9	24	92-4343	Motor - Hydraulic/Conveyor	1
8	01-271-0680	Belt - Conveyor	1	*	01-305-1480	Seal Kit	1
*	92-4455	Pin - Lacing	1	25	92-4322	Spacer - Hydraulic Motor	1
9	01-100-0180	Bearing	4	26	92-4353	Plate - Motor Adjustment	1
10	325-6	Capscrew - Hex Hd.	8	27	323-6	Capscrew - Hex Hd.	4
11	3256-6	Flat Washer	4	28	01-182-0616	Capscrew - Hex Hd.	1
12	3256-26	"SAE" Flat Washer	16	29	3217-7	Hex Nut	2
13	3253-7	Lock Washer	20	30	01-262-0050	Sprocket - Conveyor Motor	1
14	3217-9	Hex Nut	20	31	92-4575	Plate - Bearing	2
15	01-168-2010	Machinery Bushing	4(var)	32	01-158-2250	Carriage Bolt	8
16	3272-25	Cotter Pin	4	33	01-168-2014	Machinery Bushing	4(var)
17	01-182-0624	Capscrew - Hex Hd.	2	34	01-168-2018	Machinery Bushing	4(var)
18	92-4302	Plate - Roller	1				

* Not Illustrated

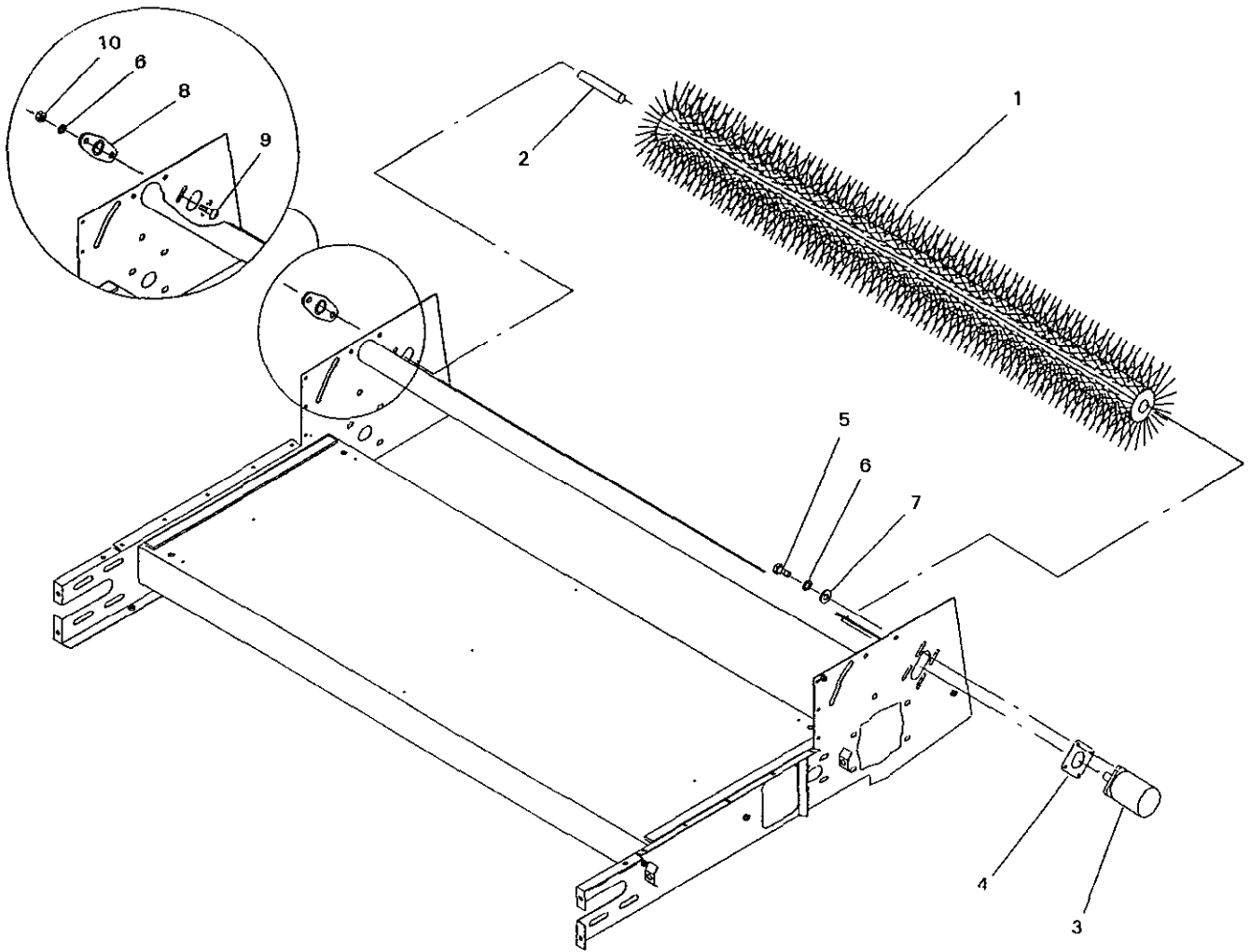


HOPPER & MANUAL TUBE ASSEMBLY

1800-002

Ref. No.	Part No.	Description	No. Used	Ref. No.	Part No.	Description	No. Used
1	92-4318	Hopper Side - LH	1	16	01-506-0500	Decal - Toro	2
2	92-4297	Skirt - Side	2	17	92-4368	Decal - Warning	2
3	3229-11	Carriage Bolt	59	18	92-4463	Support - Hopper LH	1
4	32128-33	Lock Nut - Flange	59	19	92-4464	Support - Hopper RH	1
5	92-4319	Hopper Side - RH	1	20	3217-7	Hex Nut	4
6	92-4320	Hopper Front	1	21	3256-4	Flat Washer	4
7	23-004-0981	Hopper Window	1	22	92-4493	Brace - Hopper Front	1
8	01-161-0040	Pop Rivet	14	23	92-4518	Skirt - Left Side	1
9	92-4346	Strip - Corner Hopper	2	*	92-4517	Skirt - Right Side	1
10	92-4298	Skirt - Front	1	24	2412-133	R-Clamp	2
11	92-4321	Hopper Back	1	25	74-0720	Manual Tube	1
12	92-4359	Brace - Hopper	1	26	321-4	Capscrew - Hex Hd.	2
13	92-4347	Strip - Hopper Back	2	27	3253-3	Lock Washer	2
14	3256-2	Flat Washer	6	28	3217-5	Hex Nut	2
15	23-005-0961	Corner Guard	4				

* Not Illustrated

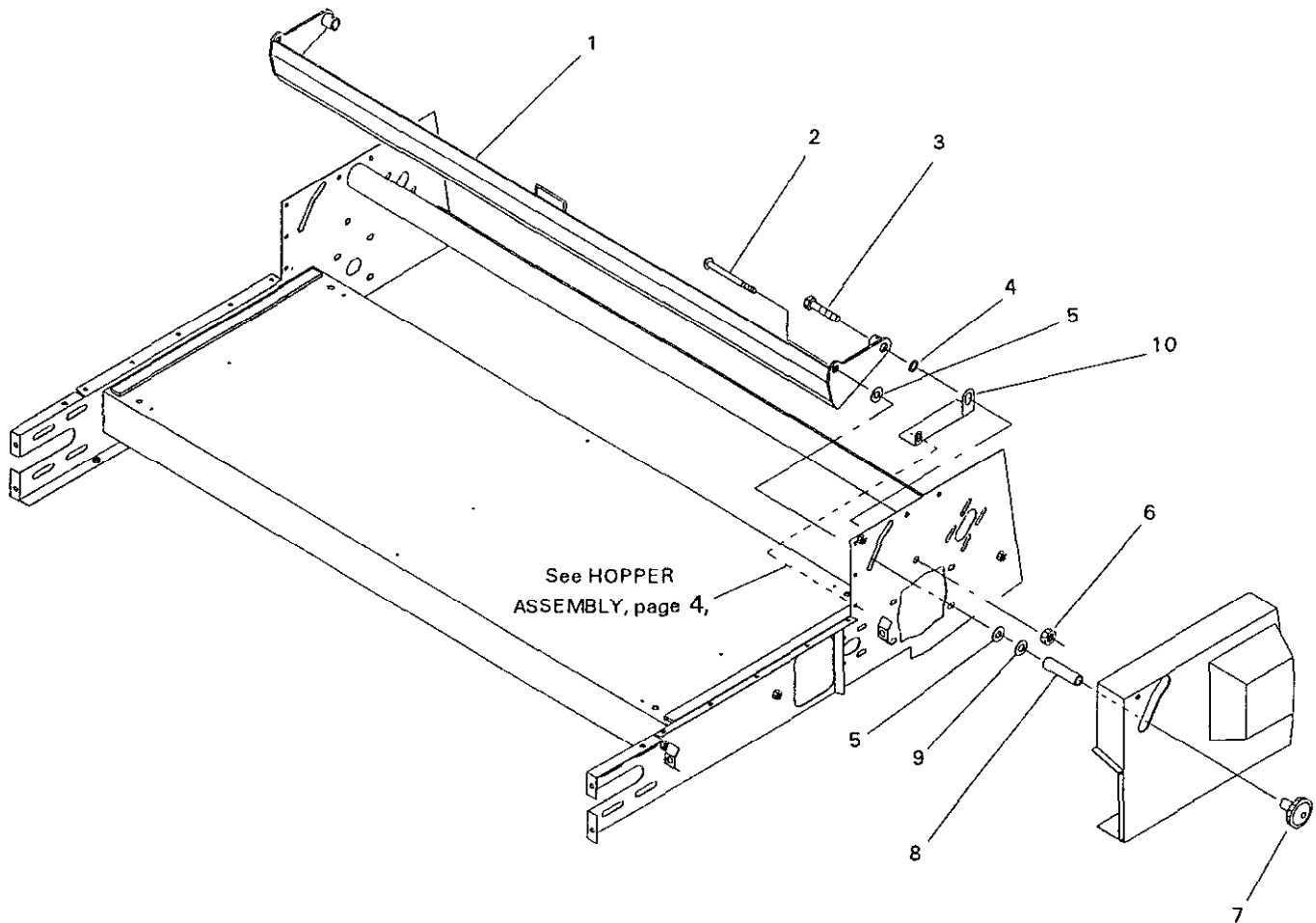


BRUSH ASSEMBLY

1800-004

Ref. No.	Part No.	Description	No. Used	Ref. No.	Part No.	Description	No. Used
1	01-286-0440	Brush	1	6	3253-5	Lock Washer	6
2	23-004-0831	Brush Shaft	1	7	3256-4	Flat Washer	4
3	92-4344	Motor - Hydraulic/Brush	1	8	01-100-0160	Bearing	1
*	01-305-1490	Seal Kit	1	9	3231-2	Carriage Bolt	2
4	92-4322	Spacer - Hydraulic Motor	1	10	3217-7	Hex Nut	2
5	323-6	Capscrew - Hex Hd.	4				

* Not illustrated



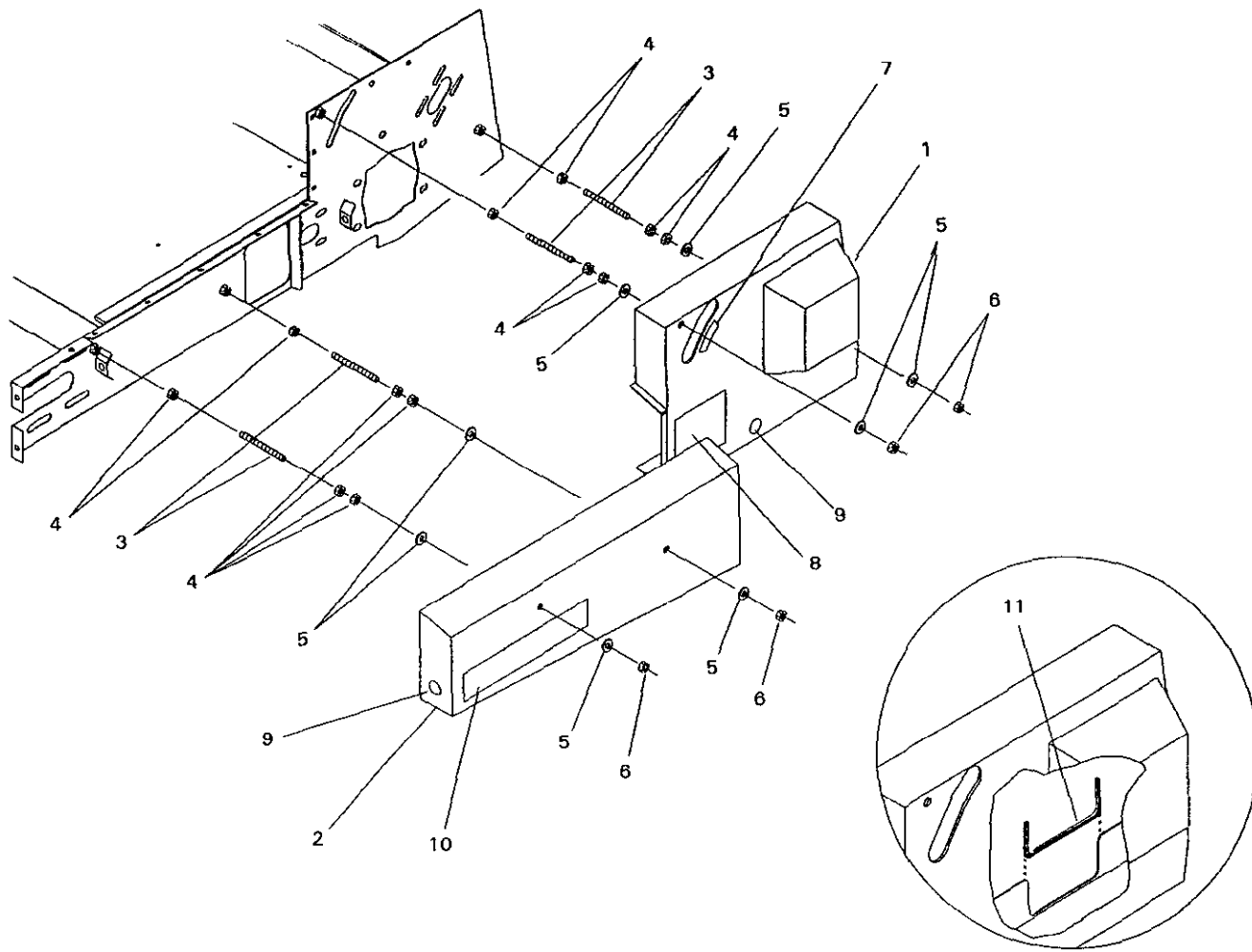
GATE ASSEMBLY

1800-005

Ref. No.	Part No.	Description	No. Used
1	92-4352	Gate	1
2	3233-7	Carriage Bolt	2
3	01-178-1218	Capscrew - Hex Hd.	2
4	92-4330	Washer - Pivot	2
5	23-004-0721	Washer-UHMW	4
6	01-189-1210	Lock Nut	2

Ref. No.	Part No.	Description	No. Used
7	01-256-0200	Knob - Gate	2
8	92-4371	Tube - Gate Adjustment	2
9	3256-6	Flat Washer	2
10	92-4518	Skirt - Left Side	1
*	92-4517	Skirt - Right Side	1

*Not Illustrated

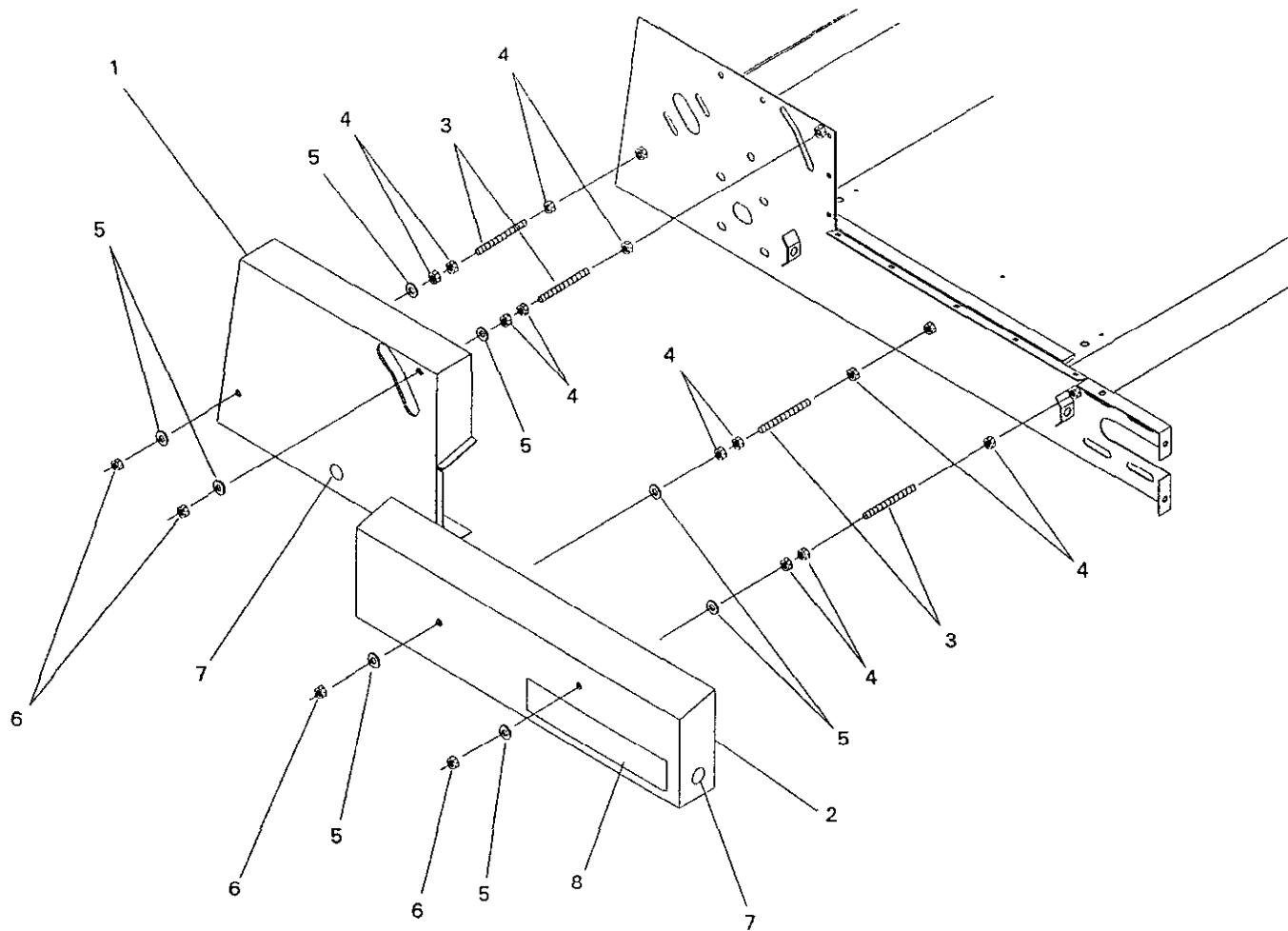


LEFT HAND GUARD ASSEMBLY

1800-008

Ref. No.	Part No.	Description	No. Used
1	92-4572	Guard - Chain (LH Side)	1
2	92-4573	Guard - LH Side	1
3	01-650-0080	All Thread	4
4	3217-7	Hex Nut	12
5	3256-4	Flat Washer	8
6	3296-59	Lock Nut	4

Ref. No.	Part No.	Description	No. Used
7	92-4443	Decal - Gauge	1
8	01-506-0050	Decal - Danger	1
9	01-506-0550	Decal - Grease	2
10	01-506-1180	Decal - Topdresser 1800	1
11	92-4574	Cover - Edge	1

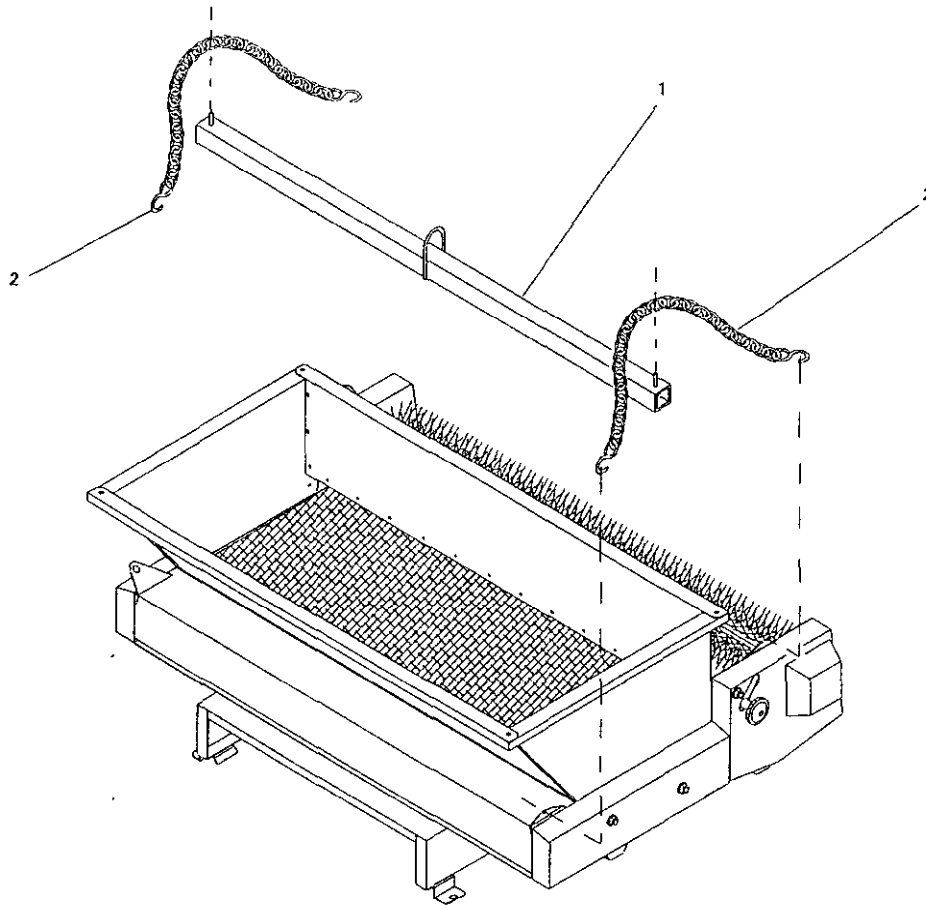


RIGHT HAND GUARD ASSEMBLY

1800-009

Ref. No.	Part No.	Description	No. Used
1	92-4357	Guard-RH Rear	1
2	92-4361	Guard - RH Side	1
3	01-650-0050	All Thread	4
4	3217-7	Hex Nut	12

Ref. No.	Part No.	Description	No. Used
5	3256-4	Flat Washer	8
6	3296-59	Lock Nut	4
7	01-506-0550	Decal - Grease	2
8	01-506-1180	Decal - Topdresser 1800	1

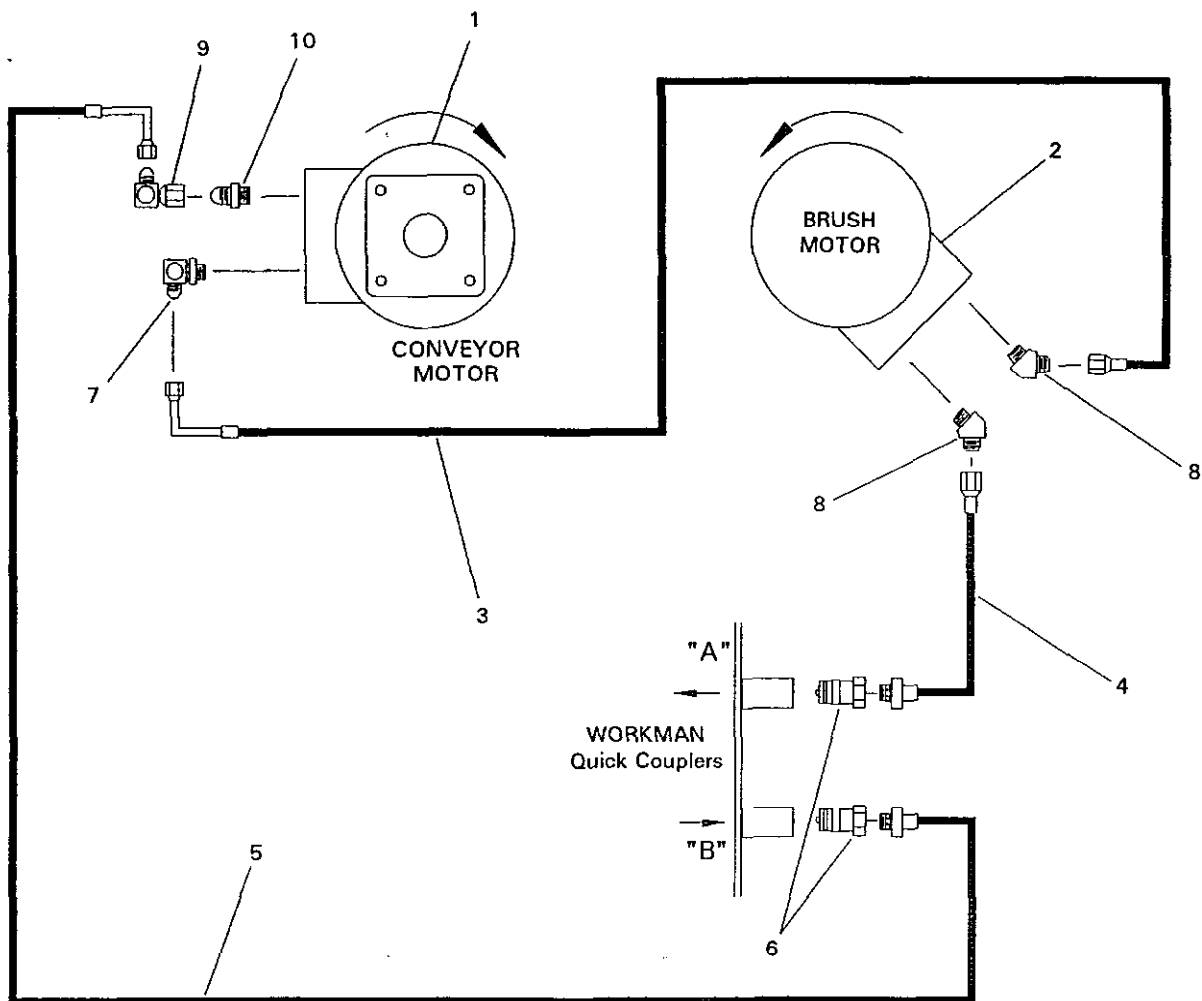


OPTIONAL LIFT KIT - NO. 92-4452

1800-007

Ref. No.	Part No.	Description	No. Used
1	92-4448	Bracket - Lift	1

Ref. No.	Part No.	Description	No. Used
2	92-4453	Chain - Lift	2



HYDRAULIC SCHEMATIC

1800-006

Ref. No.	Part No.	Description	No. Used
1	92-4343	Hydraulic Motor - Conveyor	1
*	01-305-1480	Seal Kit	1
2	92-4344	Hydraulic Motor - Brush	1
*	01-305-1490	Seal Kit	1
3	01-312-5570	Hydraulic Hose	1
4	01-312-5550	Hydraulic Hose	1

Ref. No.	Part No.	Description	No. Used
5	01-312-5560	Hydraulic Hose	1
6	92-2672	Quick Disconnect - Male	2
7	01-201-1580	Hydraulic Fitting, 90° elbow	1
8	01-201-1190	Hydraulic Fitting, 45° elbow	2
9	01-201-2410	Hydraulic Fitting, 90° elbow	1
10	01-201-1350	Hydraulic Fitting, connector	1

*Not Illustrated

PART NUMBER INDEX

Part No.	Description	Pg. No.	Ref. No.	Qty.	Part No.	Description	Pg. No.	Ref. No.	Qty.
01-100-0160	Bearing	5	8	1	323-6	Capscrew - Hex Hd.	3	27	4
01-100-0180	Bearing	3	9	4	323-6	Capscrew - Hex Hd.	5	5	4
01-158-0280	Truss Head Machine Screw	3	5	9	323-7	Capscrew - Hex Hd.	1	13	8
01-158-2250	Carriage Bolt	3	32	8	3231-2	Carriage Bolt	5	9	2
01-161-0040	Pop Rivet	4	8	14	3233-7	Carriage Bolt	6	2	2
01-168-2010	Machinery Bushing	3	15	4	325-4	Capscrew - Hex Hd.	1	25	2
01-168-2014	Machinery Bushing	3	33	4	325-4	Capscrew - Hex Hd.	2	2	2
01-168-2018	Machinery Bushing	3	34	4	325-4	Capscrew - Hex Hd.	3	19	4
01-178-1218	Capscrew - Hex Hd.	6	3	2	325-6	Capscrew - Hex Hd.	3	10	8
01-182-0616	Capscrew - Hex Hd.	3	28	1	3253-2	Lock Washer	3	6	9
01-182-0624	Capscrew - Hex Hd.	3	17	2	3253-3	Lock Washer	1	20	6
01-189-1210	Lock Nut	6	6	2	3253-3	Lock Washer	4	27	2
01-201-1190	Hydraulic Fitting	10	8	2	3253-5	Lock Washer	1	7	14
01-201-1350	Hydraulic Fitting	10	10	1	3253-5	Lock Washer	3	20	4
01-201-1580	Hydraulic Fitting	10	7	1	3253-5	Lock Washer	5	6	6
01-201-2410	Hydraulic Fitting	10	9	1	3253-7	Lock Washer	1	27	2
01-251-0020	#50 Half Link	3	*	1	3253-7	Lock Washer	3	13	20
01-256-0200	Knob - Gate	6	7	2	3256-2	Flat Washer	4	14	6
01-260-1790	Sheave	3	3	4	3256-26	"SAE" Flat Washer	1	26	4
01-262-0050	Sprocket - Conveyor Motor	3	30	1	3256-26	"SAE" Flat Washer	2	3	4
01-262-0960	Sprocket - Drive Roller	3	21	1	3256-26	"SAE" Flat Washer	3	12	16
01-271-0680	Belt - Conveyor	3	8	1	3256-4	Flat Washer	1	6	14
01-286-0440	Brush	5	1	1	3256-4	Flat Washer	4	21	4
01-305-1480	Seal Kit	3	*	1	3256-4	Flat Washer	5	7	4
01-305-1480	Seal Kit	10	*	1	3256-4	Flat Washer	7	5	8
01-305-1490	Seal Kit	5	*	1	3256-4	Flat Washer	8	5	8
01-305-1490	Seal Kit	10	*	1	3256-6	Flat Washer	3	11	4
01-312-5550	Hydraulic Hose	10	4	1	3256-6	Flat Washer	6	9	2
01-312-5560	Hydraulic Hose	10	5	1	3272-25	Cotter Pin	3	16	4
01-312-5570	Hydraulic Hose	10	3	1	3296-25	Hex Nut	1	28	2
01-506-0050	Decal - Danger	7	8	1	3296-25	Lock Nut	2	5	2
01-506-0430	Decal - Replacement Manual	1	22	1	3296-39	Lock Nut	1	27	6
01-506-0500	Decal - Toro	4	16	2	3296-59	Lock Nut	7	6	4
01-506-0550	Decal - Grease	7	9	2	3296-59	Lock Nut	8	6	4
01-506-0550	Decal - Grease	8	7	2	56-004-2401	Key - Sq.	3	22	1
01-506-1180	Decal - Topdresser 1800	7	10	1	74-0720	Manual Tube	4	25	1
01-506-1180	Decal - Topdresser 1800	8	8	1	92-1233	Pin - Clevis	1	17	2
01-650-0050	All Thread	8	3	4	92-1233	Pin - Clevis	2	7	2
01-650-0080	All Thread	7	3	4	92-1298	Pin - Lynch	1	18	4
23-004-0721	Washer-UHMW	6	5	4	92-1298	Pin - Lynch	2	4	4
23-004-0831	Brush Shaft	5	2	1	92-2667	Bracket - Attachment Mount	1	14	2
23-004-0981	Hopper Window	4	7	1	92-2672	Quick Disconnect - Male	10	6	2
23-005-0961	Corner Guard	4	15	4	92-4297	Skirt - Side	4	2	2
2412-133	R-Clamp	4	24	2	92-4298	Skirt - Front	4	10	1
321-4	Capscrew - Hex Hd.	1	16	2	92-4302	Plate - Roller	3	18	1
321-4	Capscrew - Hex Hd.	4	26	2	92-4305	Top - Slide Bed	3	4	1
321-6	Capscrew - Hex Hd.	1	10	4	92-4316	End - Frame	1	5	1
32128-33	Lock Nut - Flange	4	4	59	92-4318	Hopper Side - LH	4	1	1
3217-26	Hex Nut	3	7	9	92-4319	Hopper Side - RH	4	5	1
3217-5	Hex Nut	1	21	6	92-4320	Hopper Front	4	6	1
3217-5	Hex Nut	4	28	2	92-4321	Hopper Back	4	11	1
3217-7	Hex Nut	1	8	6	92-4322	Spacer - Hydraulic Motor	3	25	1
3217-7	Hex Nut	3	29	2	92-4322	Spacer - Hydraulic Motor	5	4	1
3217-7	Hex Nut	4	20	4	92-4330	Washer - Pivot	6	4	2
3217-7	Hex Nut	5	10	2	92-4343	Hydraulic Motor - Conveyor	10	1	1
3217-7	Hex Nut	7	4	12	92-4343	Motor - Hydraulic/Conveyor	3	24	1
3217-7	Hex Nut	8	4	12	92-4344	Hydraulic Motor - Brush	10	2	1
3217-9	Hex Nut	3	14	20	92-4344	Motor - Hydraulic/Brush	5	3	1
3229-11	Carriage Bolt	4	3	59	92-4346	Strip - Corner Hopper	4	9	2
323-4	Capscrew - Hex Hd.	1	11	8	92-4347	Strip - Hopper Back	4	13	2
323-6	Capscrew - Hex Hd.	1	3	4	92-4350	Frame - Topdresser	1	1	1

* Not Illustrated

PART NUMBER INDEX (Continued)

Part No.	Description	Pg. Ref. No. No.	Qty.	Part No.	Description	Pg. Ref. No. No.	Qty.
92-4351	Base Mounting	1 12	1	92-4453	Chain - Lift	9 2	2
92-4351	Base Mounting	2 1	1	92-4455	Pin - Lacing	3 *	1
92-4352	Gate	6 1	1	92-4459	Pin - Cylinder	1 15	2
92-4353	Plate - Motor Adjustment	3 26	1	92-4463	Support - Hopper LH	4 18	1
92-4354	Roller - Drive	3 1	1	92-4464	Support - Hopper RH	4 19	1
92-4355	Roller - Idler	3 2	1	92-4491	Cover - Rubber	1 23	1
92-4357	Guard-RH Rear	8 1	1	92-4492	Clamp - Rubber	1 24	1
92-4359	Brace - Hopper	4 12	1	92-4493	Brace - Hopper Front	4 22	1
92-4361	Guard - RH Side	8 2	1	92-4518	Skirt - Left Side	4 23	1
92-4362	Bracket - Rear Lift	1 9	2	92-4517	Skirt - Right Side	4 *	1
92-4363	Bracket - LH Front Lift	1 4	1	92-4518	Skirt - Left Side	6 10	1
92-4364	Bracket - RH Front Lift	1 2	1	92-4517	Skirt - Right Side	6 *	1
92-4368	Decal - Warning	4 17	2	92-4572	Guard - Chain (LH Side)	7 1	1
92-4370	Chain - Drive	3 23	1	92-4573	Guard - LH Side	7 2	1
92-4371	Tube - Gate Adjustment	6 8	2	92-4574	Cover - Edge	7 11	1
92-4372	Hose Retainer	1 19	2	92-4575	Plate - Bearing	3 31	2
92-4443	Decal - Gauge	7 7	1	92-4576	Spacer - Mount	2 6	2
92-4448	Bracket - Lift	9 1	1				

* Not Illustrated

PRODUCT CHANGES

In an effort to make improvements available to TORO owners as quickly as possible minor changes are incorporated into Toro's products from time to time that do not become immediately shown in the Parts Catalog. If such a change has been made in your unit which is not reflected in your manual see your TORO Distributor or an Authorized Service Dealer for information and part numbers.

IDENTIFICATION & ORDERING

MODEL AND NUMBERS

The TORO TOPDRESSER 1800 has two identification numbers; a model number and a serial number. The two numbers are stamped on a plate which is located on the base. In any correspondence concerning the Topdresser 1800, supply model and serial numbers to assure that correct information and replacement parts are obtained.

To order replacement parts from your TORO Distributor or an Authorized Service Dealer, supply the following information:

1. Model and serial number of the unit.
2. Part number description and the quantity of part (s) desired.

NOTE: Do not order by reference number if a parts catalog is being used: use the PART NUMBER.

TABLE OF CONTENTS

Description	Page	Description	Page
Base & Frame Assembly	1	Left Hand Guard Assembly	7
Base Mounting(For Units w/H.D. Hitch Frame).	2	Right Hand Guard Assembly	8
Roller Assembly	3	Optional Lift Kit - No. 92-4452	9
Hopper & Manual Tube Assembly	4	Hydraulic Schematic	10
Brush Assembly	5	Part Number Index	11 - 12
Gate Assembly	6		

NOTES

NOTES



