



Frame Kit

Greensmaster® 3300 or 3320 TriFlex® Traction Unit

Model No. 145-0061

Installation Instructions

Installation

Loose Parts

Use the chart below to verify that all parts have been shipped.

Procedure	Description	Qty.	Use
1	No parts required	–	Prepare the machine.
2	Engine mount Hex-head bolt (5/16 inch) Nut (5/16 inch) Frame	2 4 4 1	Install the engine mounts to the new frame.
3	No parts required	–	Remove the existing frame and install the new frame.

1

Preparing the Machine

No Parts Required

Procedure

1. Park the machine on a level surface.
2. Engage the parking brake.
3. Shut off the engine and remove the key.

2

Installing the Engine Mounts to the New Frame

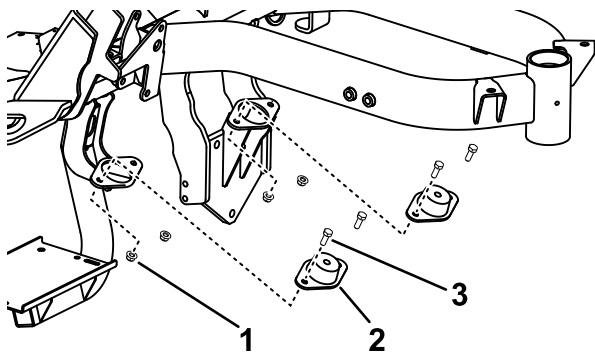
Parts needed for this procedure:

2	Engine mount
4	Hex-head bolt (5/16 inch)
4	Nut (5/16 inch)
1	Frame

Procedure

Use 4 hex-head bolts (5/16 inch) and 4 nuts (5/16 inch) to secure the engine mounts to the new frame.

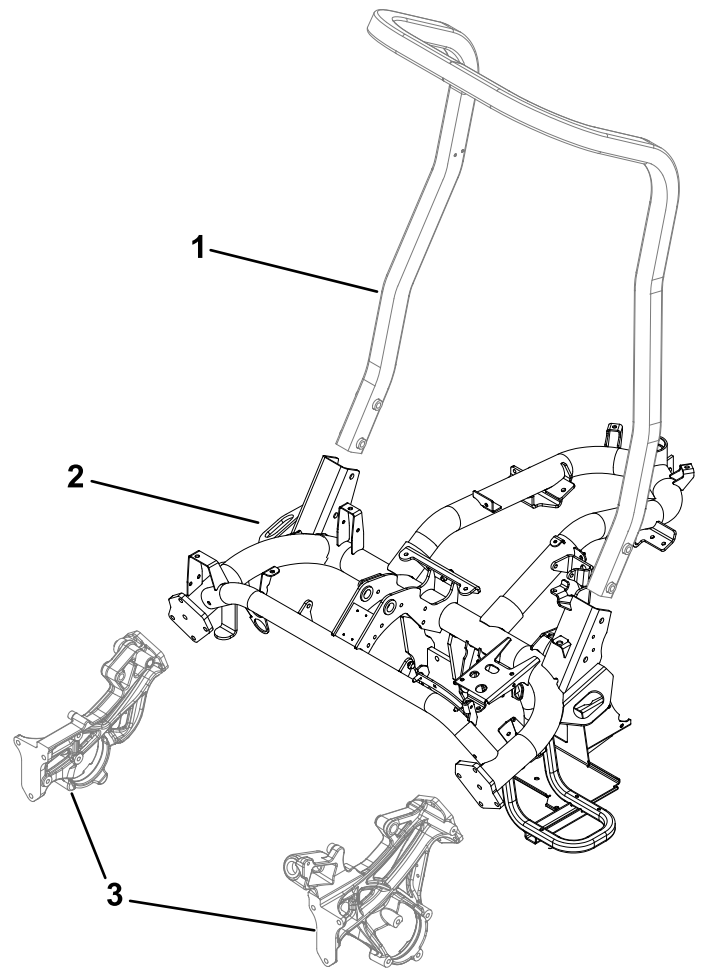




g361101

Figure 1

- | | |
|--------------------|------------------------------|
| 1. Nut (5/16 inch) | 3. Hex-head bolt (5/16 inch) |
| 2. Engine mount | |



g362006

Figure 2

- | | |
|-------------|------------------|
| 1. Roll bar | 3. Side castings |
| 2. Frame | |

3

Removing the Existing Frame and Installing the New Frame

No Parts Required

Procedure

To remove the existing frame and install the new frame, refer to the instructions in the traction unit *Service Manual* for removing and installing components that connect to the frame, including the rear steering fork, battery, engine, and fuel tank, among other components.

[Figure 2](#) shows an overview of the machine frame.