

KIT ASSEMBLY (Continued)

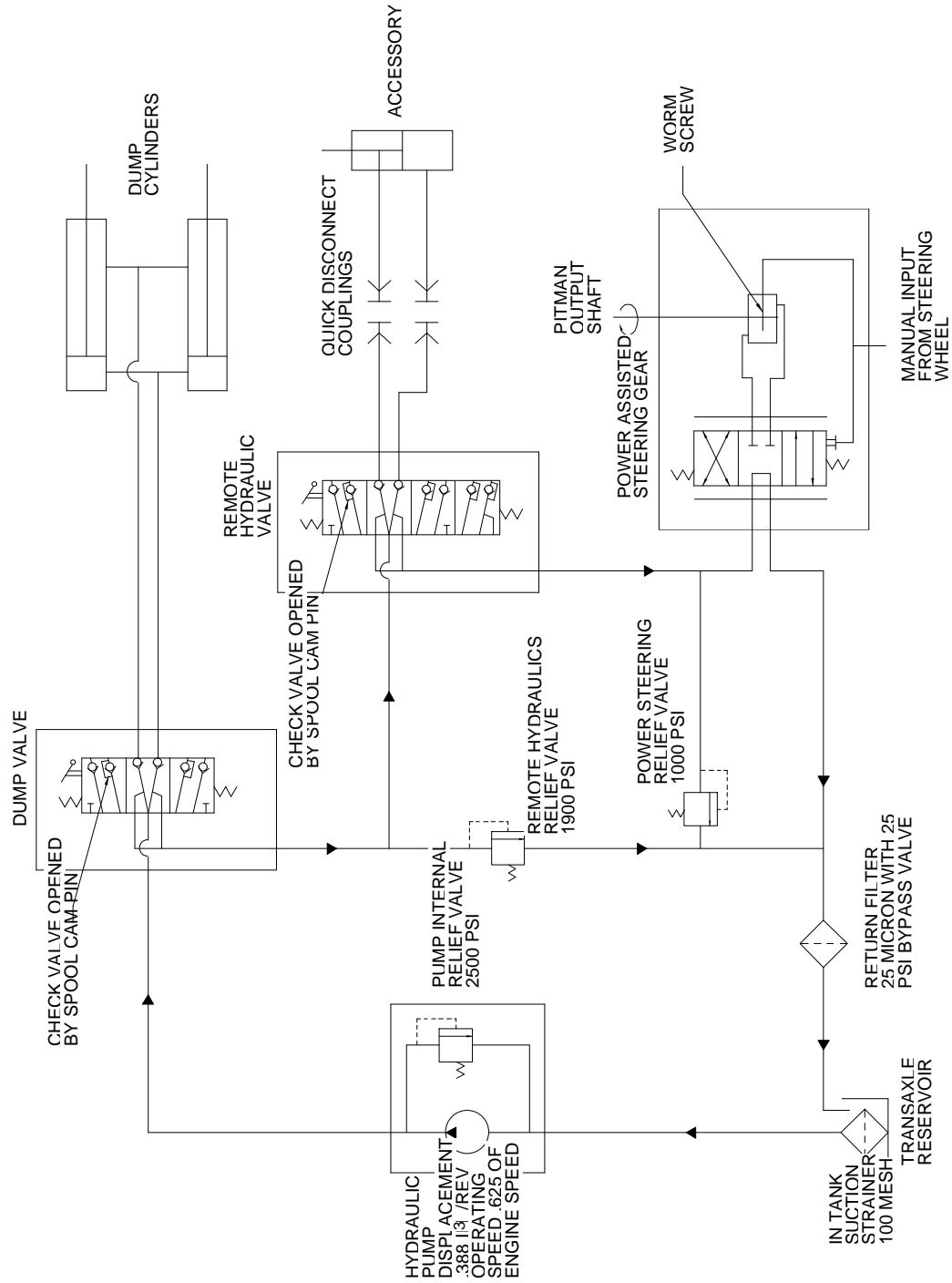
44230-1

Ref. No.	Part No.	Description	No. Used
33	3217-7	Hex Nut	4
34	3253-5	Lock Washer	4
35	323-6	Capscrew - Hex Hd.	4
36	92-4509	Stabilizer - Rear	1
37	92-1233	Pin - Clevis	2
38	92-1298	Pin - Lynch	4
39	324-7	Capscrew - Hex Hd.	1

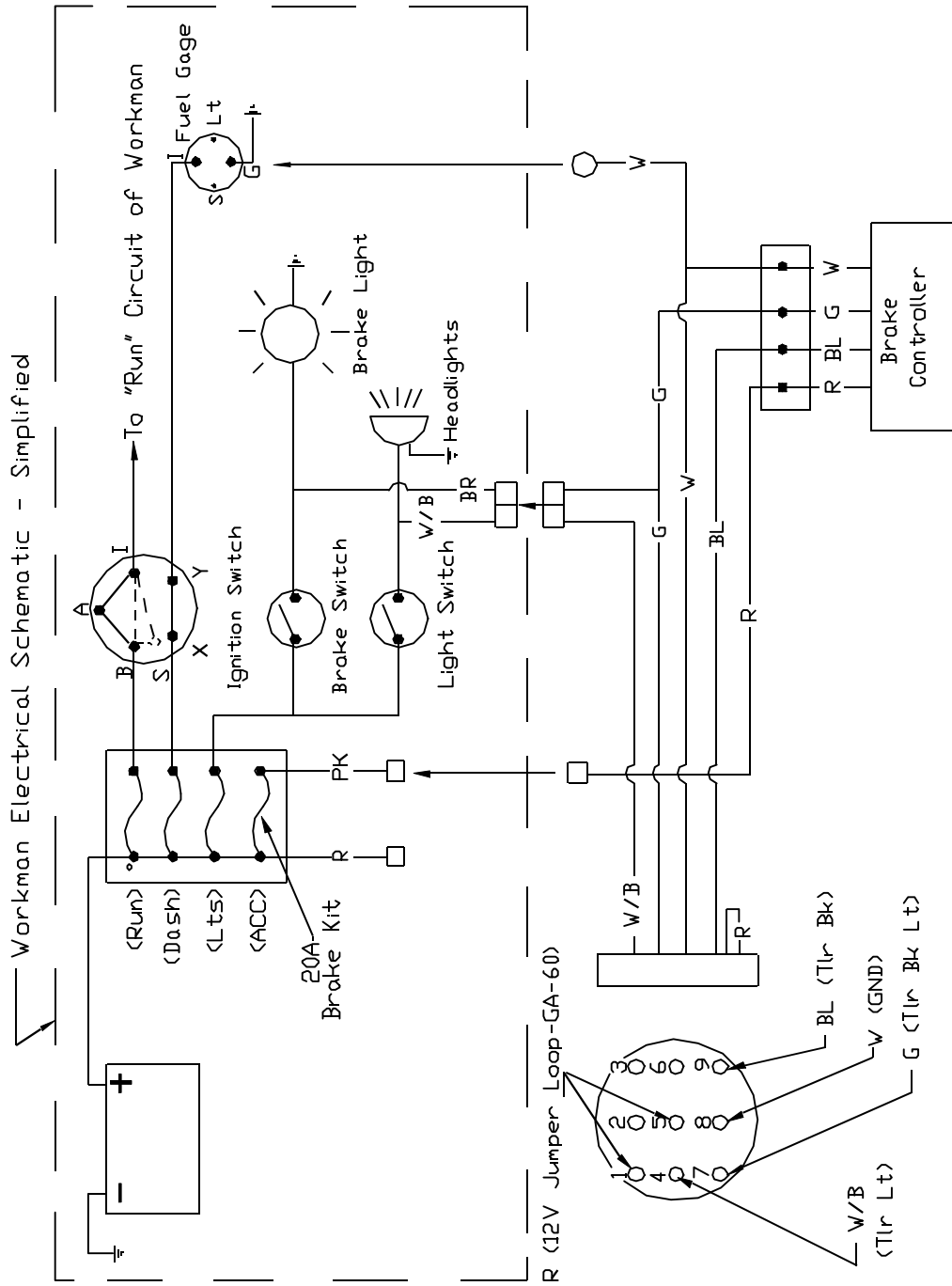
Ref. No.	Part No.	Description	No. Used
40	3256-25	"SAE" Flat Washer	1
41	92-4544	Bracket - Wire	1
42	54-0890	Decal - Caution	1
43	3256-2	Flat Washer	2
*	218-594	20 Amp Fuse	1
*	92-2672	Male Coupling - Hyd	1
*	250-5	Wire Ties	4

HYDRAULIC SCHEMATIC

(Vehicle w/Optional Remote Hydraulic Kit)



ELECTRICAL SCHEMATIC BRAKE CONTROLLER



PRODUCT CHANGES

In an effort to make improvements available to TORO owners as quickly as possible minor changes are incorporated into Toro's products from time to time that do not become immediately shown in the Parts Catalog. If such a change has been made in your unit which is not reflected in your manual see your TORO Distributor or an Authorized Service Dealer for information and part numbers

IDENTIFICATION & ORDERING

MODEL AND NUMBERS

The 5th Wheel Hitch Kit has two identification numbers; a model number and a serial number. The two numbers are stamped on a plate which is located on the main frame. In any correspondence concerning the 5th Wheel Hitch Kit, supply model and serial numbers to assure that correct information and replacement parts are obtained.

To order replacement parts from your TORO Distributor or an Authorized Service Dealer, supply the following information:

1. Model and serial number of the unit.
2. Part number description and the quantity of part (s) desired.

NOTE: Do not order by reference number if a parts catalog is being used: use the PART NUMBER.

TABLE OF CONTENTS

Description	Page	Description	Page
Kit Assembly	1 - 2	Electrical Schematic	4
Hydraulic Schematic	3		

NOTES

NOTES

