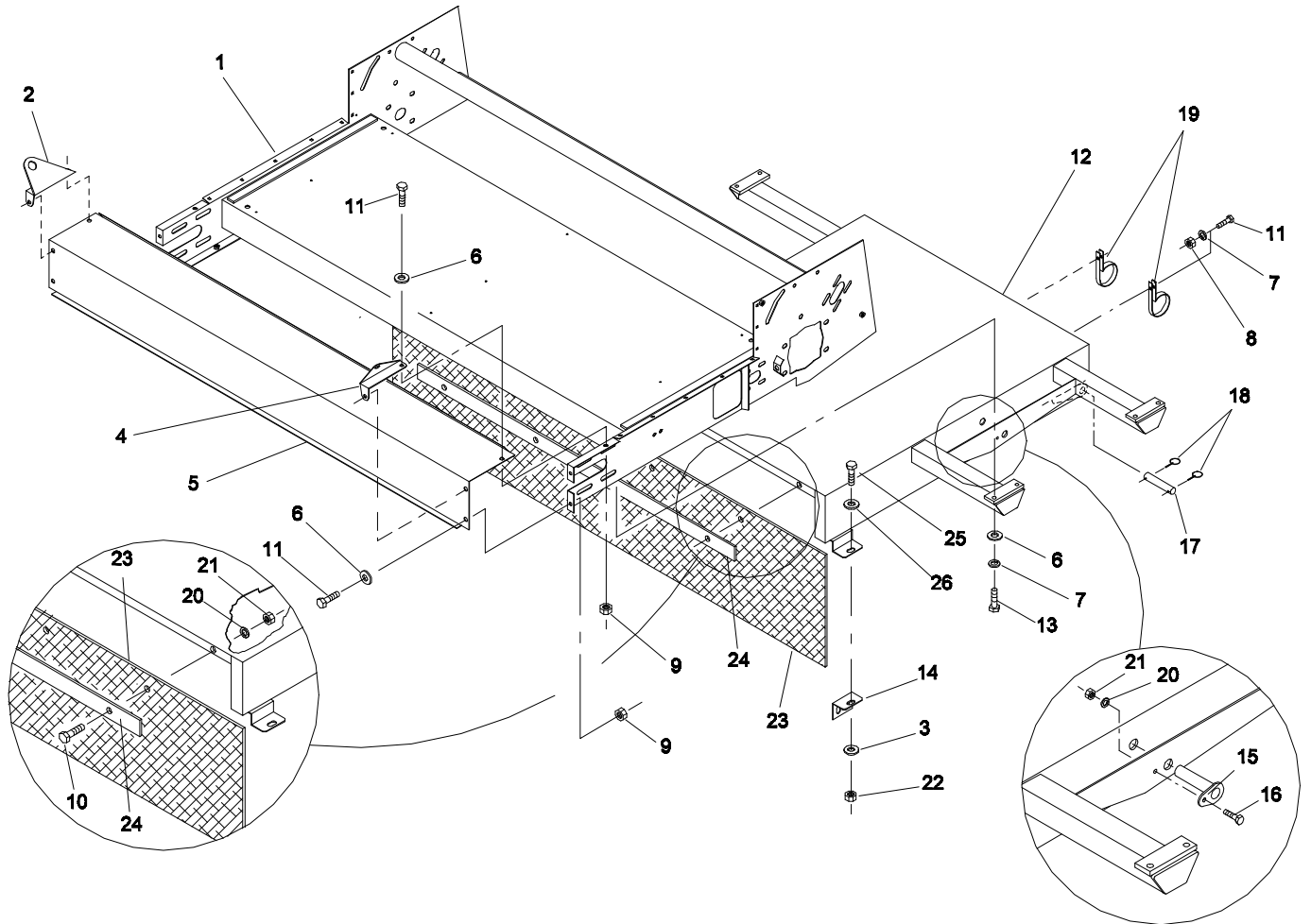




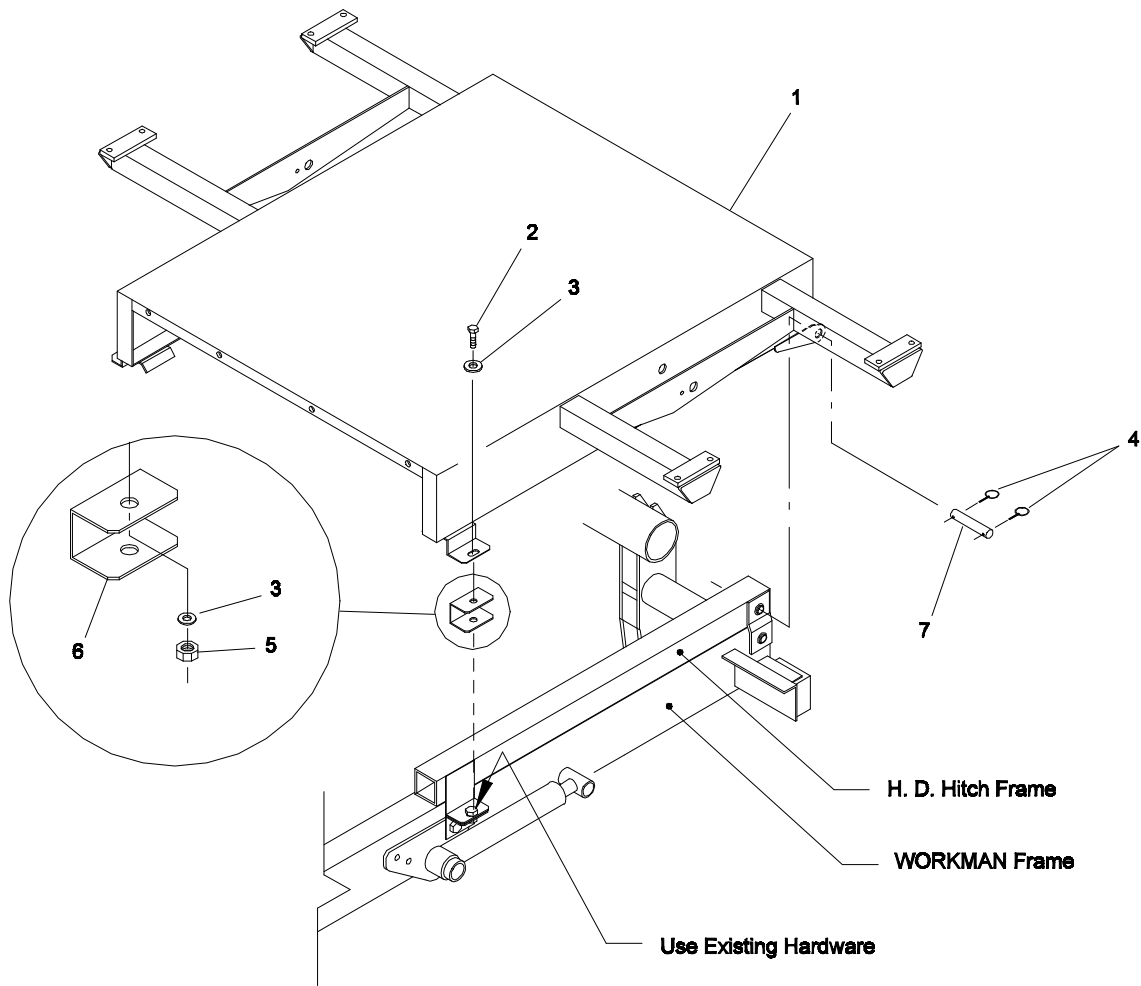
MODEL NO. 44220TE - 60001 & UP

**PARTS
CATALOG**
TOPDRESSER 1800TE
 ATTACHMENT FOR WORKMAN™ 3000 SERIES

BASE & FRAME ASSEMBLY

1801-3

Ref. No.	Part No.	Description	No. Used
1	92-4350	Frame - Topdresser	1
2	92-4364	Bracket - RH Front Lift	1
3	3256-26	"SAE" Flat Washer	4
4	92-4363	Bracket - LH Front Lift	1
5	92-4316	End - Frame	1
6	3256-4	Flat Washer	14
7	3253-5	Lock Washer	10
8	3217-7	Hex Nut	2
9	3296-39	Lock Nut	6
10	321-6	Capscrew - Hex Hd.	4
11	323-4	Capscrew - Hex Hd.	8
12	92-4351	Base Mounting	1
13	323-7	Capscrew - Hex Hd.	8

Ref. No.	Part No.	Description	No. Used
14	92-2667	Bracket - Attachment Mount	2
15	92-4459	Pin - Cylinder	2
16	321-4	Capscrew - Hex Hd.	2
17	92-1233	Pin - Clevis	2
18	92-1298	Pin - Lynch	4
19	92-4372	Hose Retainer	2
20	3253-3	Lock Washer	6
21	3217-5	Hex Nut	6
22	3296-25	Lock Nut	2
23	92-4491	Cover - Rubber	1
24	92-4492	Clamp - Rubber	1
25	325-4	Capscrew - Hex Hd.	2

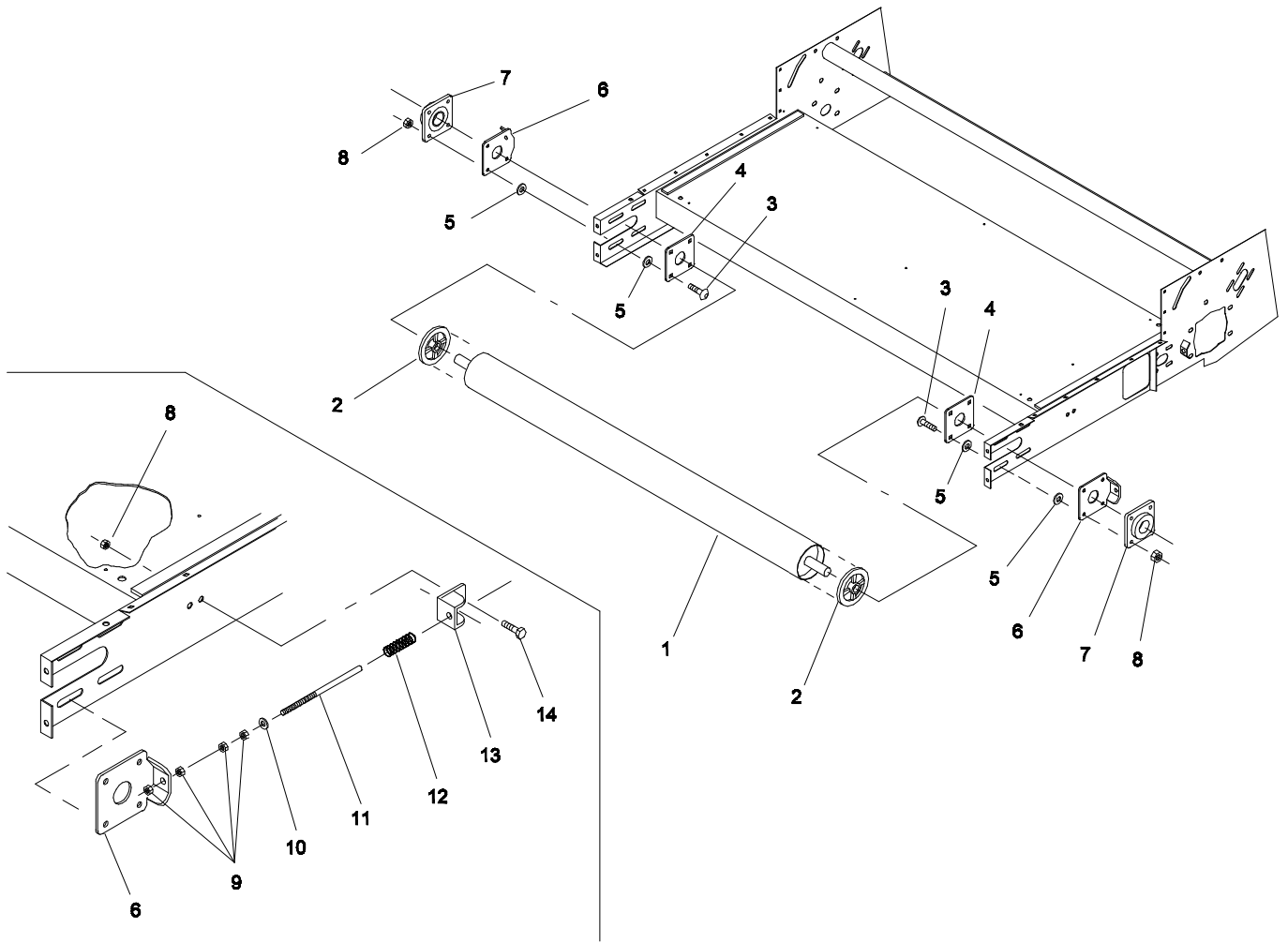


BASE MOUNTING For Units w/H.D. Hitch Frame

1800-10

Ref. No.	Part No.	Description	No. Used
1	92-4351	Base Mounting	1
2	325-4	Capscrew - Hex Hd.	2
3	3256-26	"SAE" Flat Washer	4
4	92-1298	Pin - Lynch	4

Ref. No.	Part No.	Description	No. Used
5	3296-25	Lock Nut	2
6	92-4576	Spacer - Mount	2
7	92-1233	Pin - Clevis	2

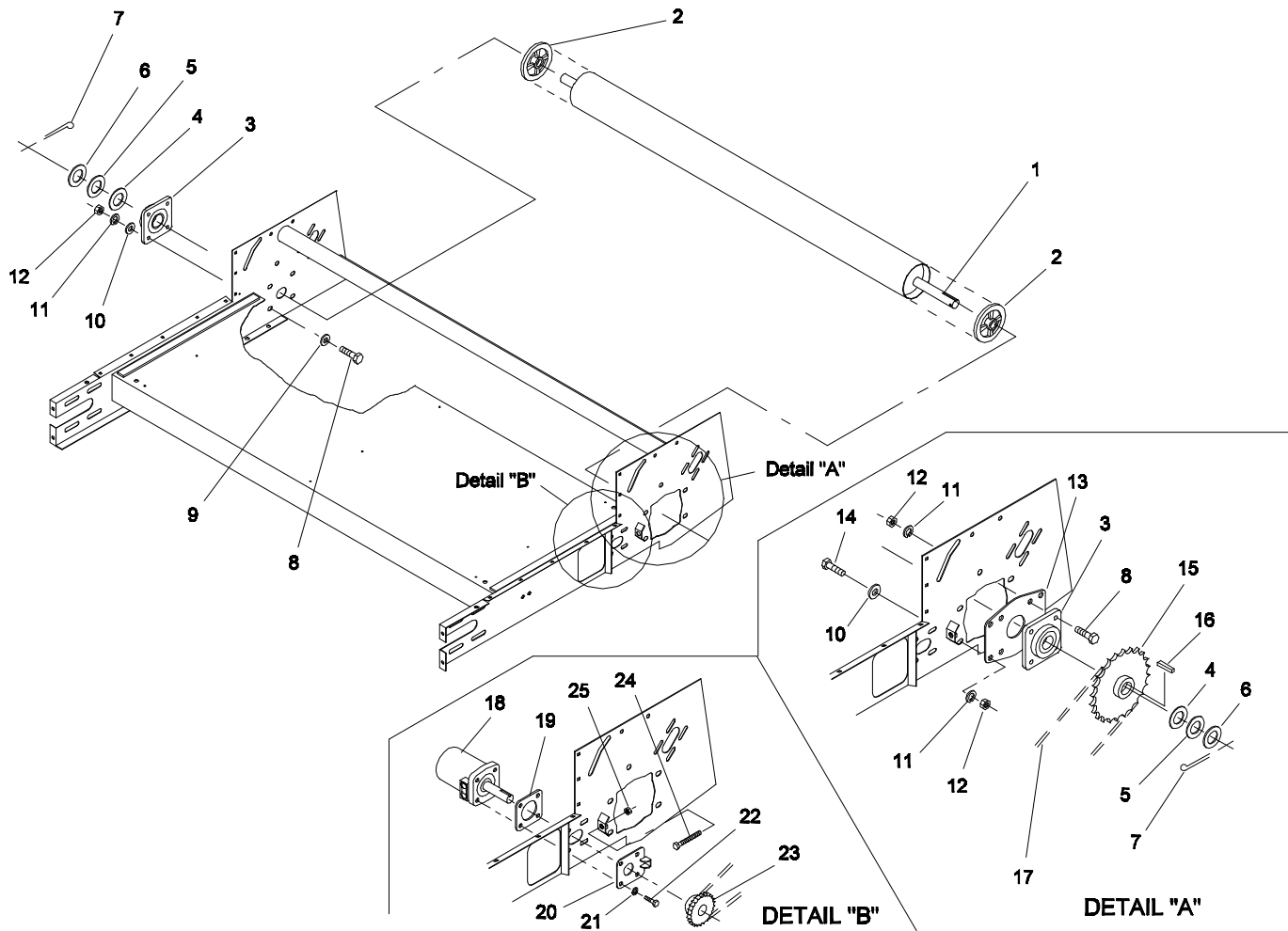


IDLER ROLLER ASSEMBLY

1800-1

Ref. No.	Part No.	Description	No. Used
1	92-4355	Roller - Idler	1
2	01-260-1790	Sheave	2
3	3233-30	Carriage Bolt	8
4	92-4575	Plate - Bearing	2
5	23-004-0721	Belt Roller Washer	16
6	95-0101	Plate - Roller Tension	2
7	01-100-0180	Bearing	2

Ref. No.	Part No.	Description	No. Used
8	32153-16	Lock Nut	12
9	3217-9	Hex Nut	8
10	3256-6	Flat Washer	2
11	23-004-0741	Belt Tension Rod	2
12	01-261-0400	Spring	2
13	95-0100	Plate - Spring Anchor	2
14	325-4	Capscrew - Hex Hd.	4



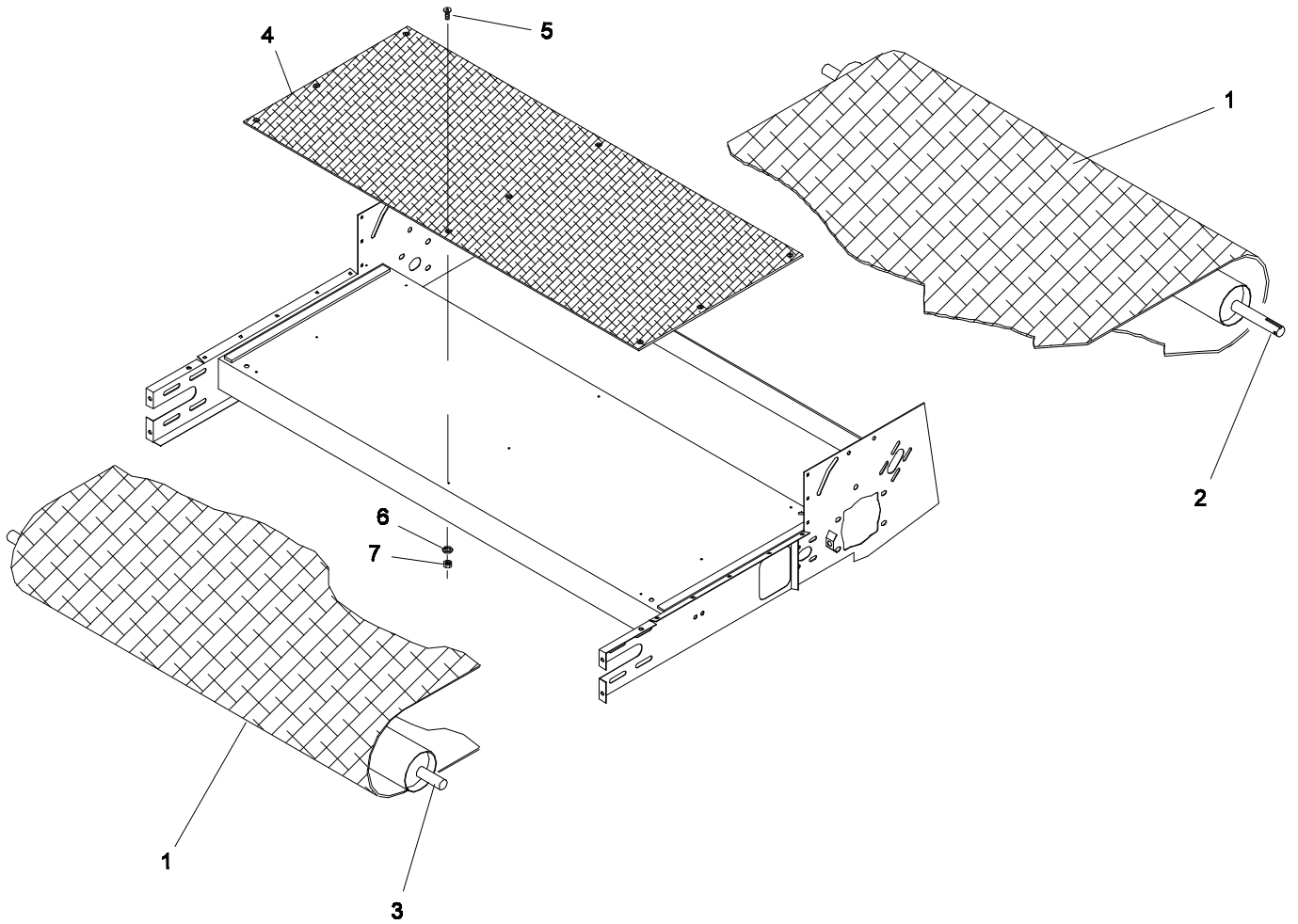
DRIVE ROLLER ASSEMBLY

1800-11

Ref. No.	Part No.	Description	No. Used
1	92-4354	Roller - Drive	1
2	01-260-1790	Sheave	2
3	01-100-0180	Bearing	2
4	01-168-2010	Machinery Bushing	2(var)
5	01-168-2014	Machinery Bushing	2(var)
6	01-168-2018	Machinery Bushing	2(var)
7	3272-25	Cotter Pin	2
8	325-6	Capscrew - Hex Hd.	8
9	3256-6	Flat Washer	4
10	3256-26	"SAE" Flat Washer	8
11	3253-7	Lock Washer	12
12	3217-9	Hex Nut	12
13	92-4302	Plate - Roller	1
14	325-4	Capscrew - Hex Hd.	4
15	01-262-0960	Sprocket - Drive Roller	1

Ref. No.	Part No.	Description	No. Used
16	56-004-2401	Key - Sq.	1
17	92-4370	Chain - Drive	1
*	01-251-0020	#50 Half Link	1
18	92-4343	Motor - Hydraulic/Conveyor	1
*	01-305-1480	Seal Kit	1
19	92-4322	Spacer - Hydraulic Motor	1
20	92-4353	Plate - Motor Adjustment	1
21	3253-5	Lock Washer	4
22	323-6	Capscrew - Hex Hd.	4
24	01-182-0616	Capscrew - Hex Hd.	1
25	3217-7	Hex Nut	2
23	01-262-0050	Sprocket - Conveyor Motor	1

* Not Illustrated



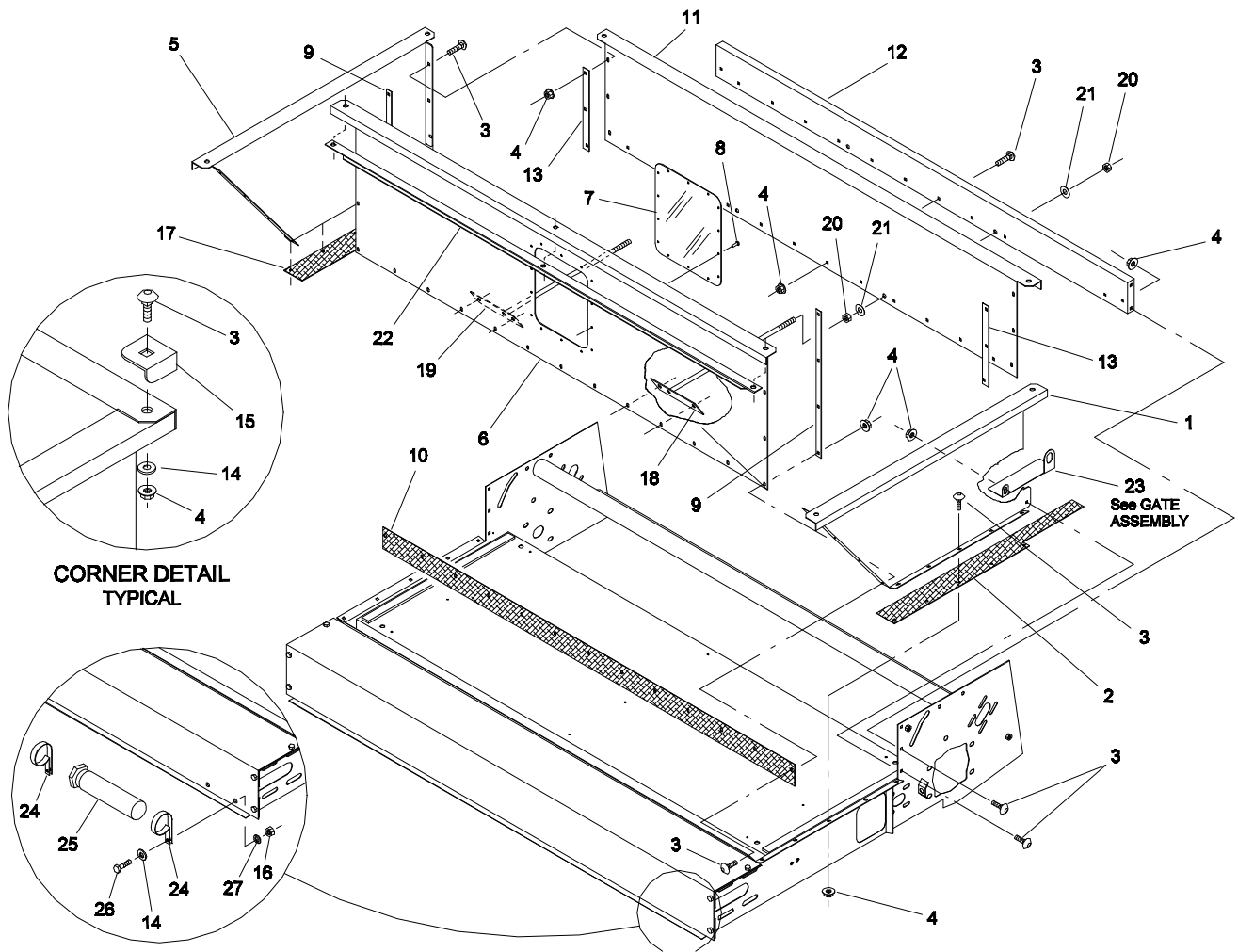
BELT ASSEMBLY

1800-12

Ref. No.	Part No.	Description	No. Used
1	01-271-0680	Belt - Conveyor	1
*	92-4455	Pin - Lacing	1
2	92-4354	Roller - Drive	1
3	92-4355	Roller - Idler	1

Ref. No.	Part No.	Description	No. Used
4	92-4305	Top - Slide Bed	1
5	01-158-0280	Truss Head Machine Screw	9
6	3253-2	Lock Washer	9
7	3217-26	Hex Nut	9

* Not Illustrated



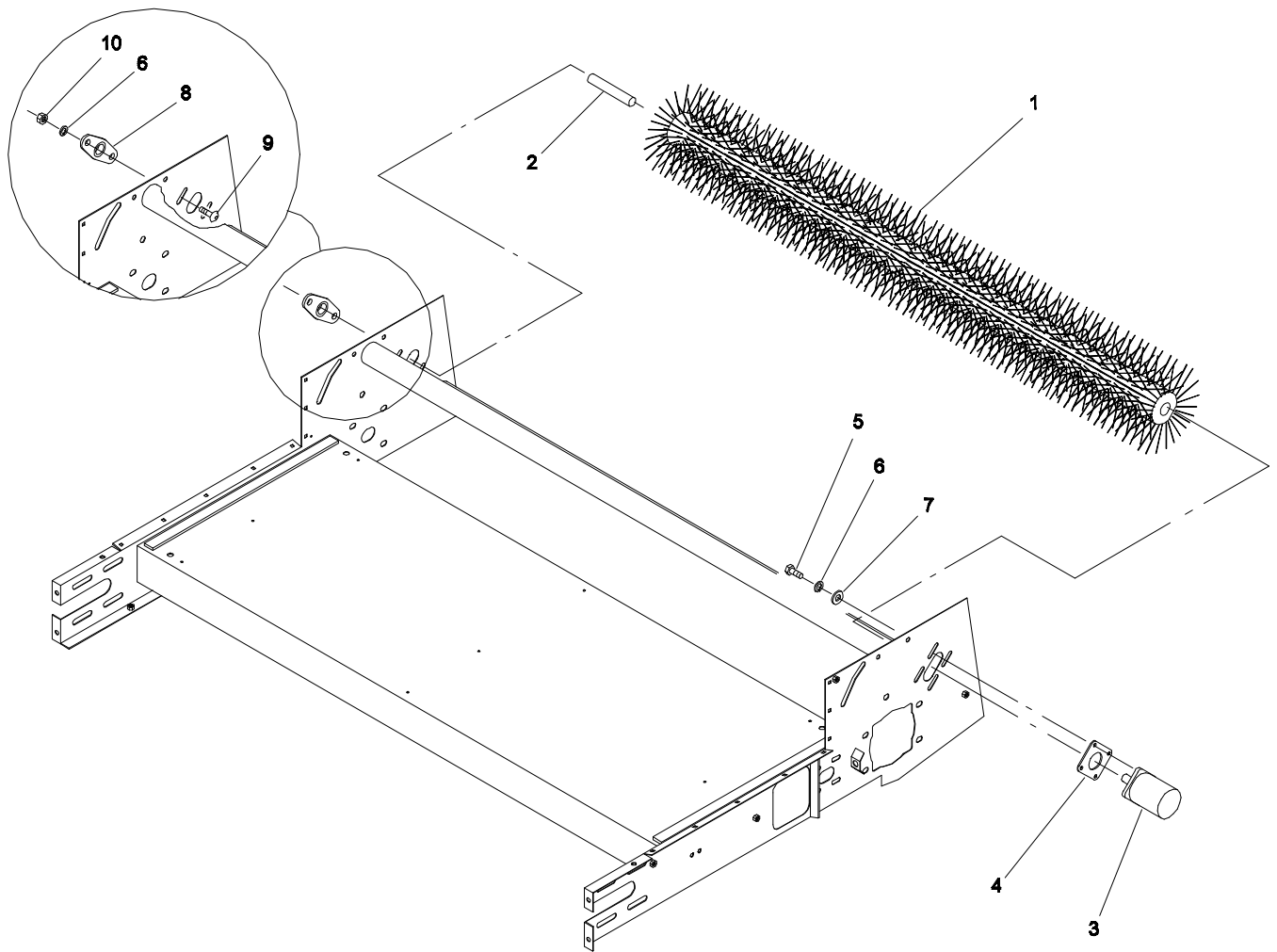
HOPPER & MANUAL TUBE ASSEMBLY

1801-4

Ref. No.	Part No.	Description	No. Used
1	92-4318	Hopper Side - LH	1
2	95-0102	Skirt - Side LH	1
3	3229-11	Carriage Bolt	59
4	32128-33	Lock Nut - Flange	59
5	92-4319	Hopper Side - RH	1
6	92-4320	Hopper Front	1
7	23-004-0981	Hopper Window	1
8	01-161-0040	Pop Rivet	14
9	92-4346	Strip - Corner Hopper	2
10	92-4298	Skirt - Front	1
11	92-4321	Hopper Back	1
12	92-4359	Brace - Hopper	1
13	92-4347	Strip - Hopper Back	2
14	3256-2	Flat Washer	6

Ref. No.	Part No.	Description	No. Used
15	23-004-0971	Corner Guard	4
16	3217-5	Hex Nut	2
17	95-0103	Skirt - Side RH	1
18	92-4463	Support - Hopper LH	1
19	92-4464	Support - Hopper RH	1
20	3217-7	Hex Nut	4
21	3256-4	Flat Washer	4
22	92-4493	Brace - Hopper Front	1
23	92-4518	Skirt - Left Side	1
*	92-4517	Skirt - Right Side	1
24	2412-133	R-Clamp	2
25	74-0720	Manual Tube	1
26	321-4	Capscrew - Hex Hd.	2
27	3253-3	Lock Washer	2

* Not Illustrated



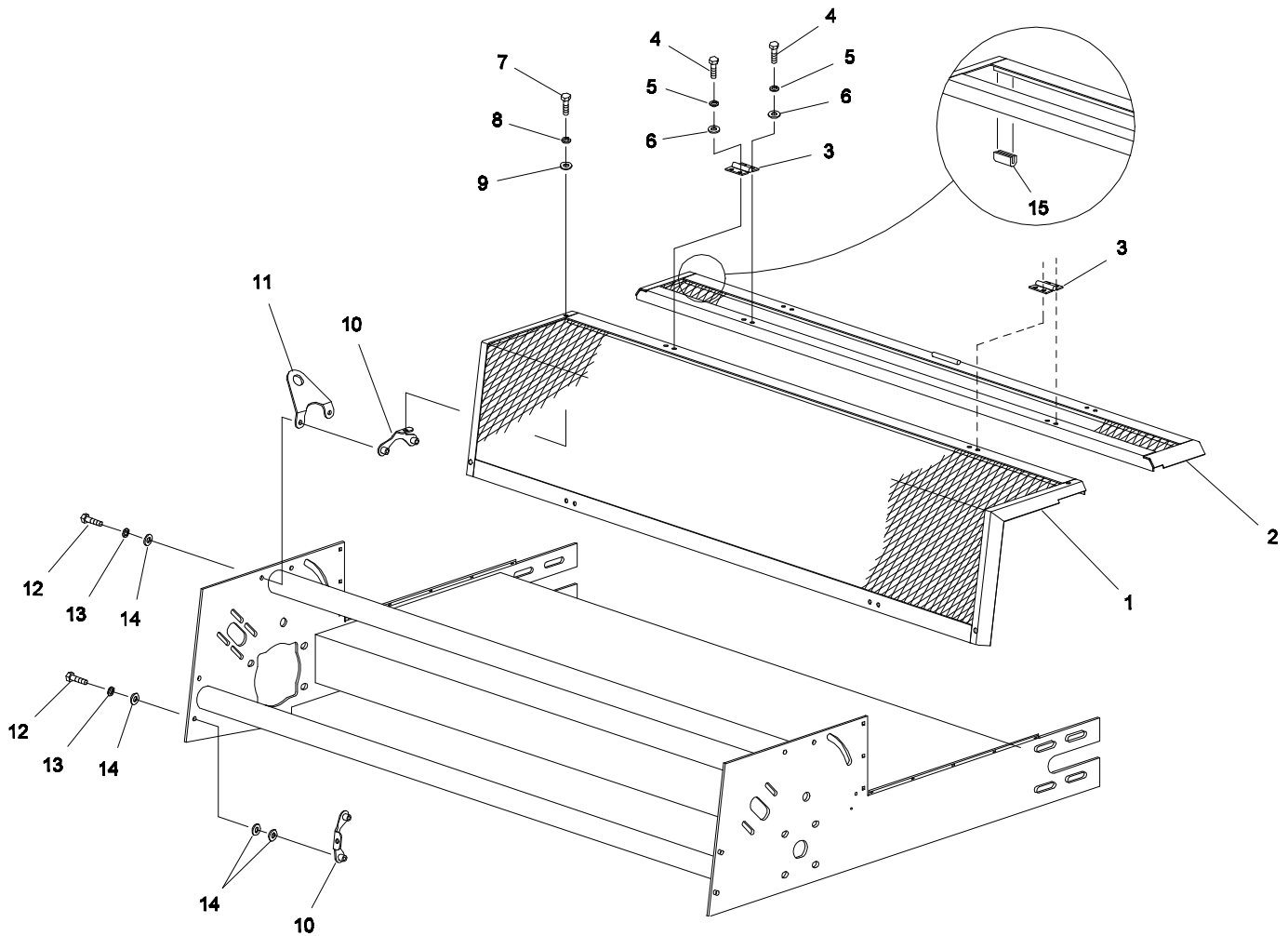
BRUSH ASSEMBLY

1800-4

Ref. No.	Part No.	Description	No. Used
1	01-286-0440	Brush	1
2	23-004-0831	Brush Shaft	1
3	92-4344	Motor - Hydraulic/Brush	1
*	01-305-1490	Seal Kit	1
4	92-4322	Spacer - Hydraulic Motor	1
5	323-6	Capscrew - Hex Hd.	4

Ref. No.	Part No.	Description	No. Used
6	3253-5	Lock Washer	6
7	3256-4	Flat Washer	4
8	01-100-0160	Bearing	1
9	3231-2	Carriage Bolt	2
10	3217-7	Hex Nut	2

* Not Illustrated

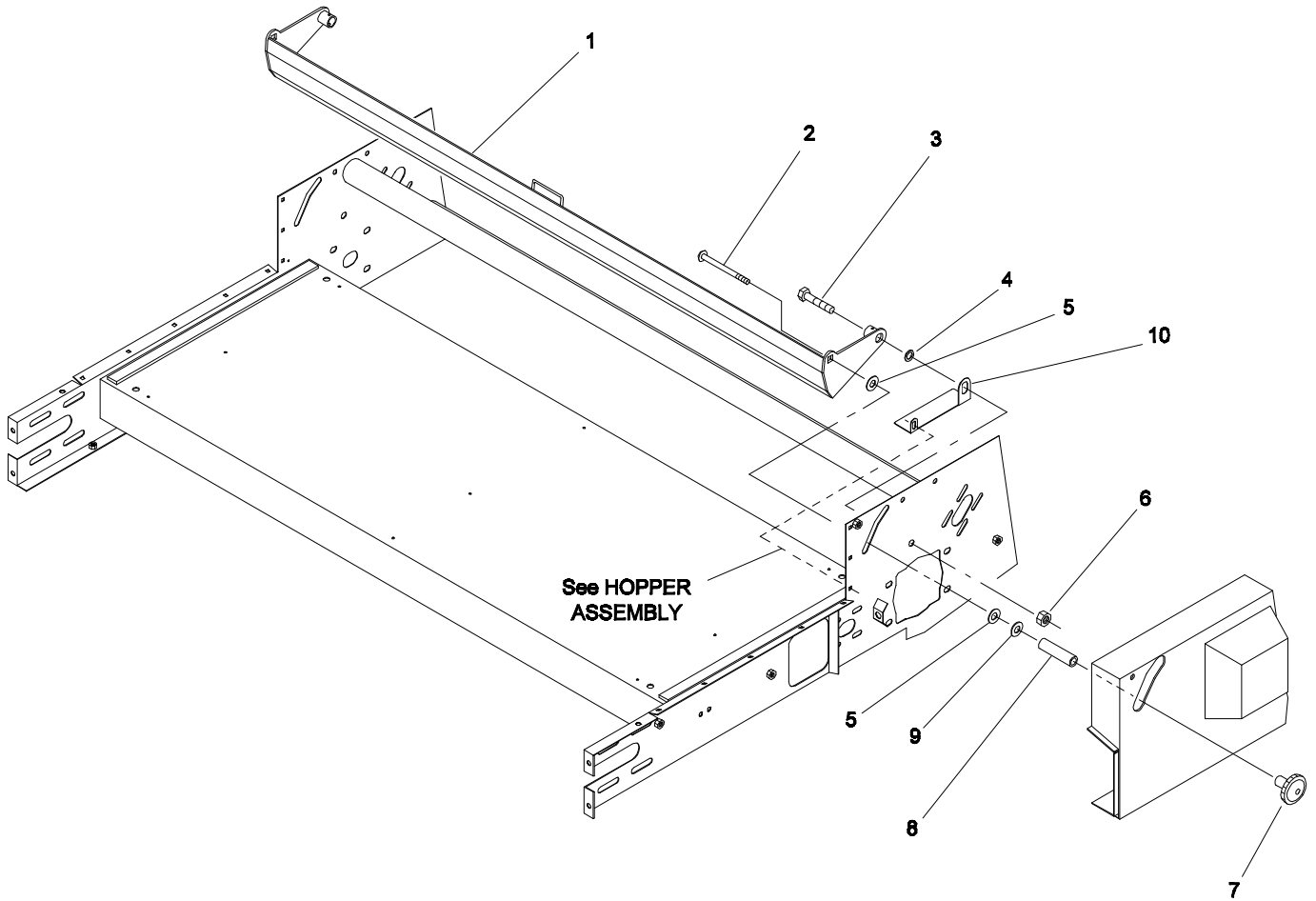


BRUSH GUARD & ACCESS FLAP ASSEMBLY

1801-1

Ref. No.	Part No.	Description	No. Used
1	92-4593	Brush Guard Assembly	1
2	92-4594	Access Flap Assembly	1
3	92-4590	Hinge	2
4	321-2	Capscrew - Hex Hd.	8
5	3253-3	Lock Washer	8
6	3256-22	Flat Washer	8
7	322-3	Capscrew - Hex Hd.	4
8	3253-4	Lock Washer	4

Ref. No.	Part No.	Description	No. Used
9	3256-23	Flat Washer	4
10	92-4592	Support Bracket Assembly	4
11	92-4362	Bracket - Rear Lift	2
12	323-6	Capscrew - Hex Hd.	8
13	3253-5	Lock Washer	8
14	3256-24	Flat Washer	16
15	92-4589	U-Channel	4



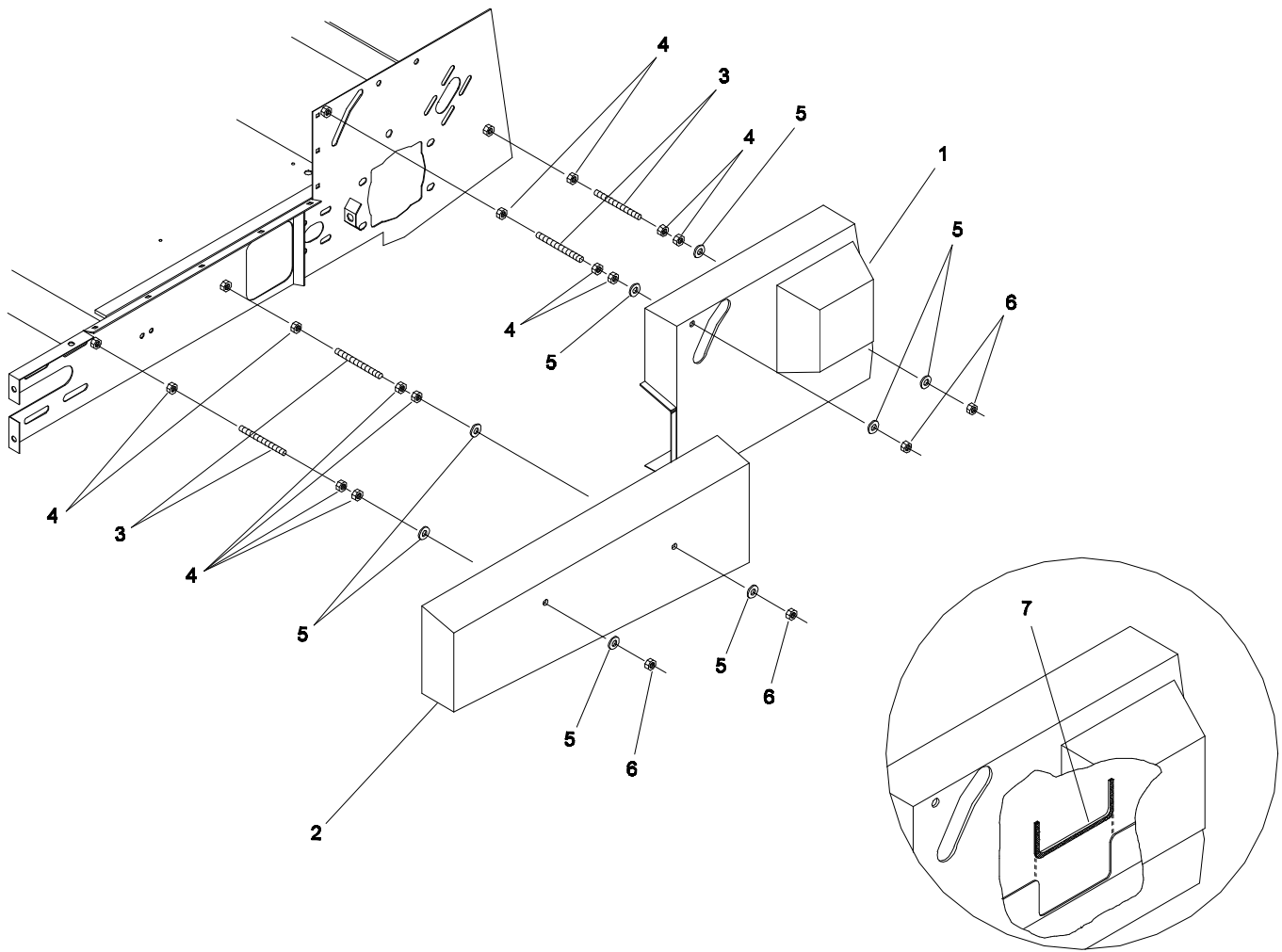
GATE ASSEMBLY

1800-5

Ref. No.	Part No.	Description	No. Used
1	95-0104	Gate	1
2	3233-7	Carriage Bolt	2
3	01-178-1218	Capscrew - Hex Hd.	2
4	92-4330	Washer - Pivot	2
5	23-004-0721	Washer-UHMW	4
6	01-189-1210	Lock Nut	2

Ref. No.	Part No.	Description	No. Used
7	01-256-0200	Knob - Gate	2
8	92-4371	Tube - Gate Adjustment	2
9	3256-6	Flat Washer	2
10	92-4518	Skirt - Left Side	1
*	92-4517	Skirt - Right Side	1

* Not Illustrated

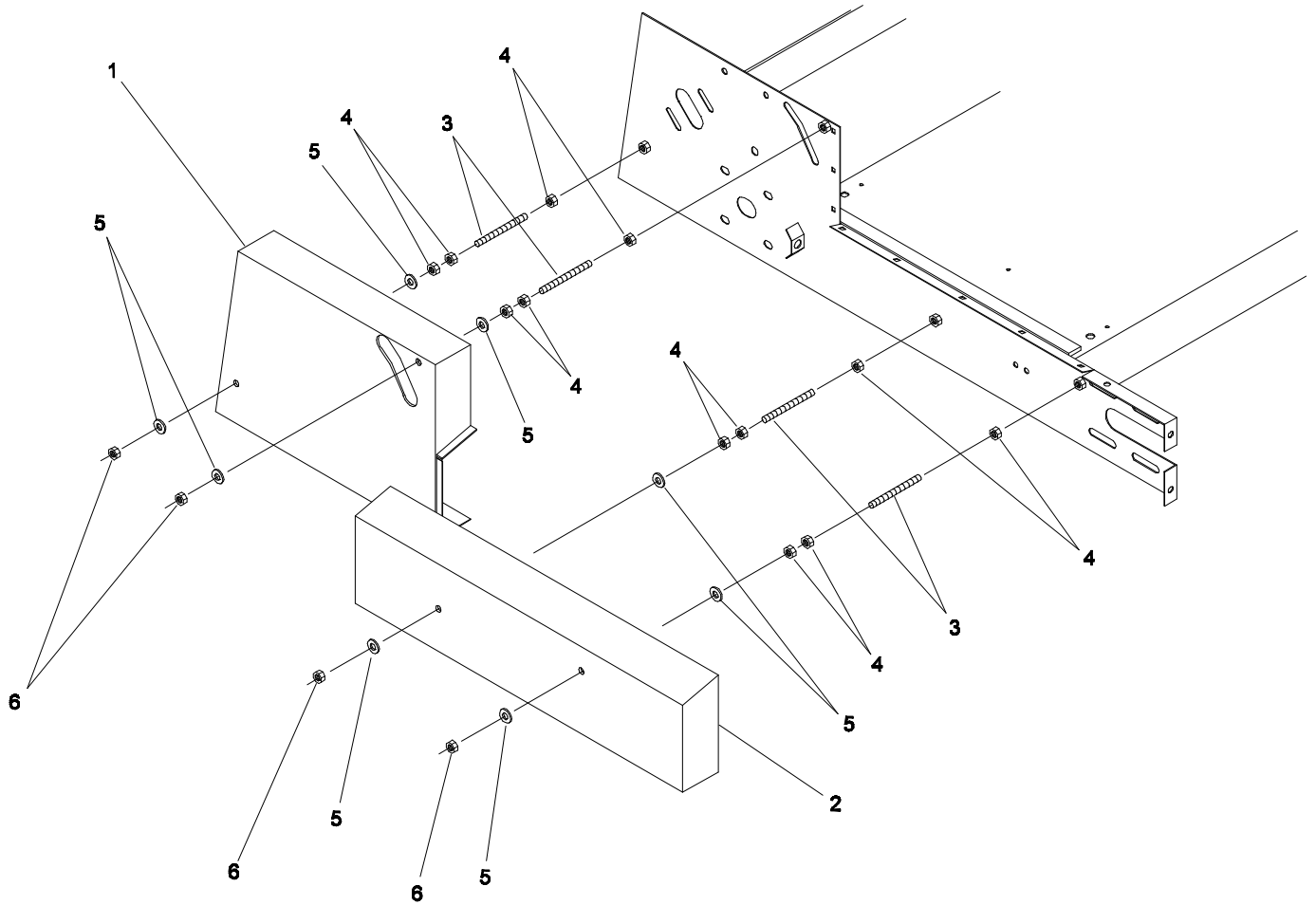


LEFT HAND GUARD ASSEMBLY

1801-5

Ref. No.	Part No.	Description	No. Used
1	92-4572	Guard - Chain (LH Side)	1
2	92-4573	Guard - LH Side	1
3	01-650-0080	All Thread	4
4	3217-7	Hex Nut	12

Ref. No.	Part No.	Description	No. Used
5	3256-4	Flat Washer	8
6	3296-59	Lock Nut	4
7	92-4574	Cover - Edge	1

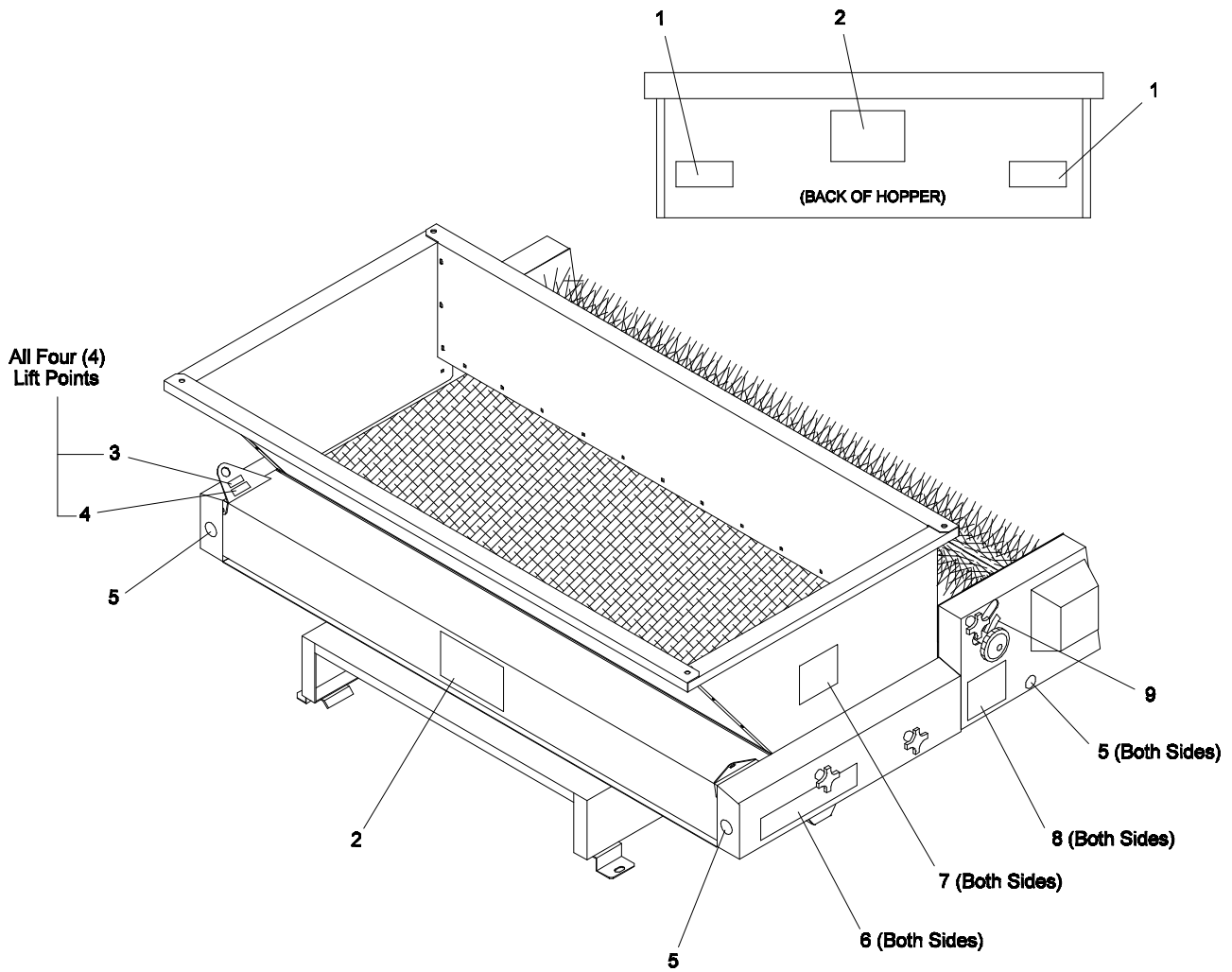


RIGHT HAND GUARD ASSEMBLY

1801-6

Ref. No.	Part No.	Description	No. Used
1	92-4357	Guard-RH Rear	1
2	92-4361	Guard - RH Side	1
3	01-650-0050	All Thread	4

Ref. No.	Part No.	Description	No. Used
4	3217-7	Hex Nut	12
5	3256-4	Flat Washer	8
6	3296-59	Lock Nut	4

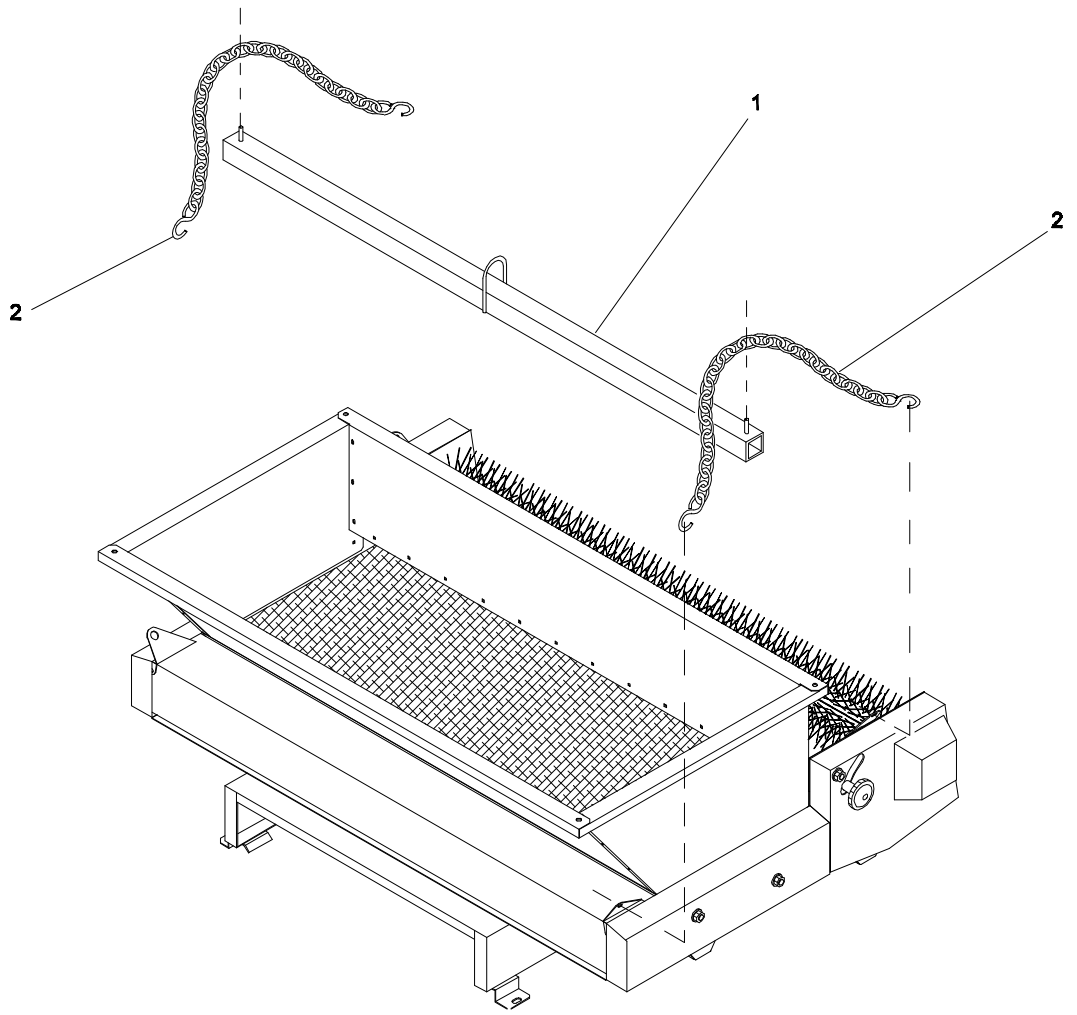


DECALS

1801-7

Ref. No.	Part No.	Description	No. Used
1	93-9092	Decal - Warning	2
2	62-7400	Decal - Toro	2
3	93-9084	Decal - Lift Point	4
4	93-9529	Decal - KG Value	4
5	58-6520	Decal - Grease	4

Ref. No.	Part No.	Description	No. Used
6	01-506-1180	Decal - Topdresser 1800	2
7	94-1235	Decal - Capacity	2
8	93-9869	Decal - Danger	2
9	92-4443	Decal - Gate Adjustment	1

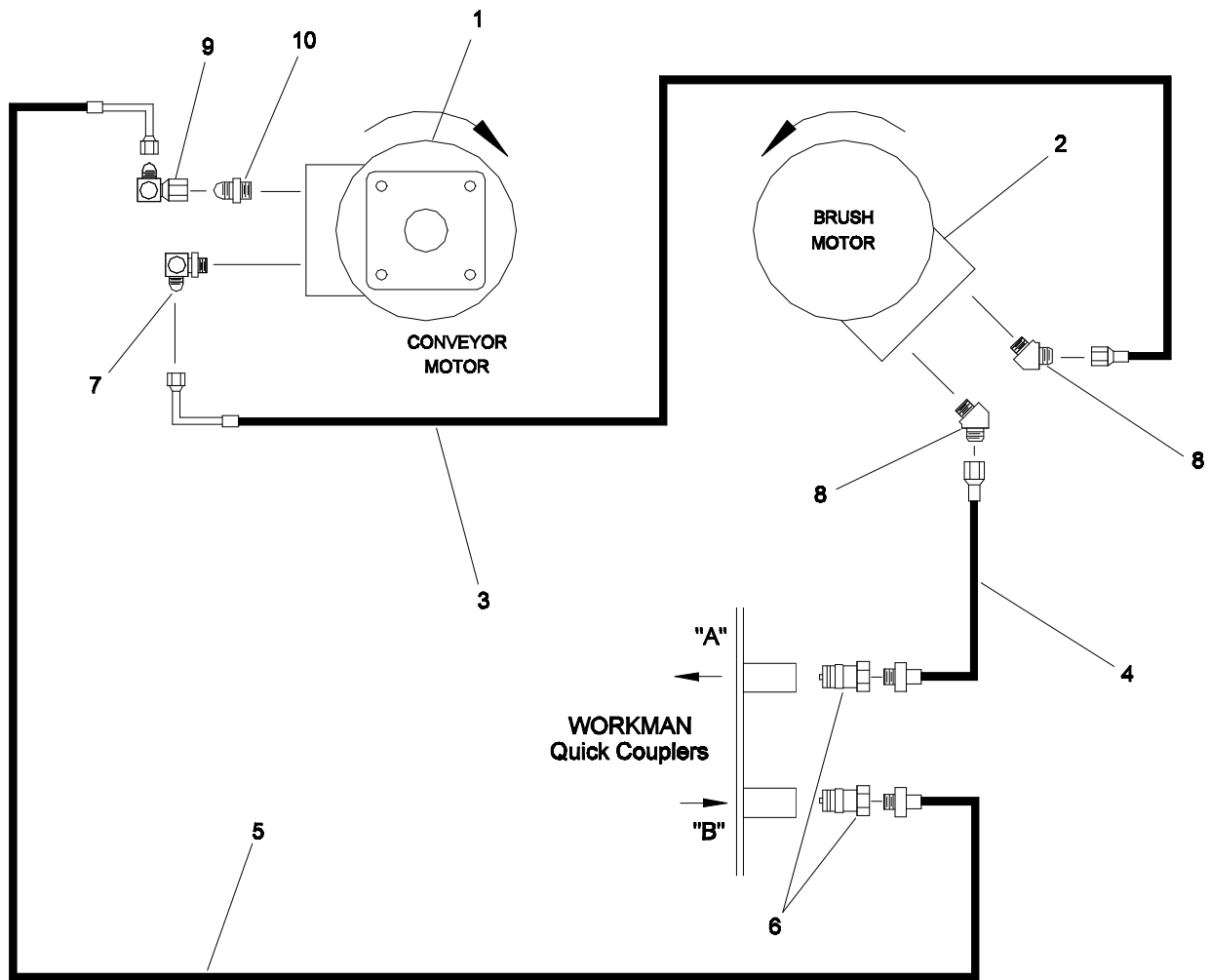


OPTIONAL LIFT KIT - NO. 92 - 4452

1800-7

Ref. No.	Part No.	Description	No. Used
1	92-4448	Bracket - Lift	1

Ref. No.	Part No.	Description	No. Used
2	92-4453	Chain - Lift	2



HYDRAULIC SCHEMATIC

1800-6

Ref. No.	Part No.	Description	No. Used
1	92-4343	Hydraulic Motor - Conveyor	1
*	01-305-1480	Seal Kit	1
2	92-4344	Hydraulic Motor - Brush	1
*	01-305-1490	Seal Kit	1
3	01-312-5570	Hydraulic Hose	1
4	01-312-5550	Hydraulic Hose	1

Ref. No.	Part No.	Description	No. Used
5	01-312-5560	Hydraulic Hose	1
6	92-2672	Quick Disconnect - Male	2
7	01-201-1580	Hydraulic Fitting, 90° elbow	1
8	01-201-1190	Hydraulic Fitting, 45° elbow	2
9	01-201-2410	Hydraulic Fitting, 90° elbow	1
10	01-201-1350	Hydraulic Fitting, connector	1

* Not Illustrated

PART NUMBER INDEX

Part No.	Description	Pg. No.	Ref. No.	Qty.	Part No.	Description	Pg. No.	Ref. No.	Qty.
01-100-0160	Bearing	7	8	1	323-6	Capscrew - Hex Hd.	4	22	4
01-100-0180	Bearing	3	7	2	323-6	Capscrew - Hex Hd.	7	5	4
01-100-0180	Bearing	4	3	2	323-6	Capscrew - Hex Hd.	8	12	8
01-158-0280	Truss Head Machine Screw	5	5	9	323-7	Capscrew - Hex Hd.	1	13	8
01-161-0040	Pop Rivet	6	8	14	3231-2	Carriage Bolt	7	9	2
01-168-2010	Machinery Bushing	4	4	2	3233-30	Carriage Bolt	3	3	8
01-168-2014	Machinery Bushing	4	5	2	3233-7	Carriage Bolt	9	2	2
01-168-2018	Machinery Bushing	4	6	2	325-4	Capscrew - Hex Hd.	1	25	2
01-178-1218	Capscrew - Hex Hd.	9	3	2	325-4	Capscrew - Hex Hd.	2	2	2
01-182-0616	Capscrew - Hex Hd.	4	23	1	325-4	Capscrew - Hex Hd.	3	14	4
01-189-1210	Lock Nut	9	6	2	325-4	Capscrew - Hex Hd.	4	14	4
01-201-1190	Hydraulic Fitting	14	8	2	325-6	Capscrew - Hex Hd.	4	8	8
01-201-1350	Hydraulic Fitting	14	10	1	3253-2	Lock Washer	5	6	9
01-201-1580	Hydraulic Fitting	14	7	1	3253-3	Lock Washer	1	20	6
01-201-2410	Hydraulic Fitting	14	9	1	3253-3	Lock Washer	6	27	2
01-251-0020	#50 Half Link	4	*	1	3253-3	Lock Washer	8	5	8
01-256-0200	Knob - Gate	9	7	2	3253-4	Lock Washer	8	8	4
01-260-1790	Sheave	3	2	2	3253-5	Lock Washer	1	7	10
01-260-1790	Sheave	4	2	2	3253-5	Lock Washer	4	21	4
01-261-0400	Spring	3	12	2	3253-5	Lock Washer	7	6	6
01-262-0050	Sprocket - Conveyor Motor	4	25	1	3253-5	Lock Washer	8	13	8
01-262-0960	Sprocket - Drive Roller	4	15	1	3253-7	Lock Washer	1	27	2
01-271-0680	Belt - Conveyor	5	1	1	3253-7	Lock Washer	4	11	12
01-286-0440	Brush	7	1	1	3256-2	Flat Washer	6	14	6
01-305-1480	Seal Kit	14	*	1	3256-22	Flat Washer	8	6	8
01-305-1480	Seal Kit	4	*	1	3256-23	Flat Washer	8	9	4
01-305-1490	Seal Kit	7	*	1	3256-24	Flat Washer	8	14	16
01-305-1490	Seal Kit	14	*	1	3256-26	"SAE" Flat Washer	1	3	4
01-312-5550	Hydraulic Hose	14	4	1	3256-26	"SAE" Flat Washer	2	3	4
01-312-5560	Hydraulic Hose	14	5	1	3256-26	"SAE" Flat Washer	4	10	8
01-312-5570	Hydraulic Hose	14	3	1	3256-4	Flat Washer	1	6	14
01-506-1180	Decal - Topdresser 1800	12	6	2	3256-4	Flat Washer	6	21	4
01-650-0050	All Thread	11	3	4	3256-4	Flat Washer	7	7	4
01-650-0080	All Thread	10	3	4	3256-4	Flat Washer	10	5	8
23-004-0721	Belt Roller Washer	3	5	16	3256-4	Flat Washer	11	5	8
23-004-0721	Washer-UHMW	9	5	4	3256-6	Flat Washer	3	10	2
23-004-0741	Belt Tension Rod	3	11	2	3256-6	Flat Washer	4	9	4
23-004-0831	Brush Shaft	7	2	1	3256-6	Flat Washer	9	9	2
23-004-0971	Corner Guard	6	15	4	3272-25	Cotter Pin	4	7	2
23-004-0981	Hopper Window	6	7	1	3296-25	Hex Nut	1	22	2
2412-133	R-Clamp	6	24	2	3296-25	Lock Nut	2	5	2
321-2	Capscrew - Hex Hd.	8	4	8	3296-39	Lock Nut	1	9	6
321-4	Capscrew - Hex Hd.	1	16	2	3296-59	Lock Nut	10	6	4
321-4	Capscrew - Hex Hd.	6	26	2	3296-59	Lock Nut	11	6	4
321-6	Capscrew - Hex Hd.	1	10	4	56-004-2401	Key - Sq.	4	16	1
32128-33	Lock Nut - Flange	6	4	59	58-6520	Decal - Grease	12	5	4
32153-16	Lock Nut	3	8	12	62-7400	Decal - Toro	12	2	2
3217-26	Hex Nut	5	7	9	74-0720	Manual Tube	6	25	1
3217-5	Hex Nut	1	21	6	92-1233	Pin - Clevis	1	17	2
3217-5	Hex Nut	6	16	2	92-1233	Pin - Clevis	2	7	2
3217-7	Hex Nut	1	8	2	92-1298	Pin - Lynch	1	18	4
3217-7	Hex Nut	4	24	2	92-1298	Pin - Lynch	2	4	4
3217-7	Hex Nut	6	20	4	92-2667	Bracket - Attachment Mount	1	14	2
3217-7	Hex Nut	7	10	2	92-2672	Quick Disconnect - Male	14	6	2
3217-7	Hex Nut	10	4	12	92-4298	Skirt - Front	6	10	1
3217-7	Hex Nut	11	4	12	92-4302	Plate - Roller	4	13	1
3217-9	Hex Nut	3	9	8	92-4305	Top - Slide Bed	5	4	1
3217-9	Hex Nut	4	12	12	92-4316	End - Frame	1	5	1
3229-11	Carriage Bolt	6	3	59	92-4318	Hopper Side - LH	6	1	1
322-3	Capscrew - Hex Hd.	8	7	4	92-4319	Hopper Side - RH	6	5	1
323-4	Capscrew - Hex Hd.	1	11	8	92-4320	Hopper Front	6	6	1

* Not Illustrated

PART NUMBER INDEX (Continued)

Part No.	Description	Pg. No.	Ref. No.	Qty.	Part No.	Description	Pg. No.	Ref. No.	Qty.
92-4321	Hopper Back	6	11	1	92-4459	Pin - Cylinder	1	15	2
92-4322	Spacer - Hydraulic Motor	4	19	1	92-4463	Support - Hopper LH	6	18	1
92-4322	Spacer - Hydraulic Motor	7	4	1	92-4464	Support - Hopper RH	6	19	1
92-4330	Washer - Pivot	9	4	2	92-4491	Cover - Rubber	1	23	1
92-4343	Hydraulic Motor - Conveyor	14	1	1	92-4492	Clamp - Rubber	1	24	1
92-4343	Motor - Hydraulic/Conveyor	4	18	1	92-4493	Brace - Hopper Front	6	22	1
92-4344	Hydraulic Motor - Brush	14	2	1	92-4518	Skirt - Left Side	6	23	1
92-4344	Motor - Hydraulic/Brush	7	3	1	92-4517	Skirt - Right Side	6	*	1
92-4346	Strip - Corner Hopper	6	9	2	92-4518	Skirt - Left Side	9	10	1
92-4347	Strip - Hopper Back	6	13	2	92-4517	Skirt - Right Side	9	*	1
92-4350	Frame - Topdresser	1	1	1	92-4572	Guard - Chain (LH Side)	10	1	1
92-4351	Base Mounting	1	12	1	92-4573	Guard - LH Side	10	2	1
92-4351	Base Mounting	2	1	1	92-4574	Cover - Edge	10	7	1
92-4353	Plate - Motor Adjustment	4	20	1	92-4575	Plate - Bearing	3	4	2
92-4354	Roller - Drive	4	1	1	92-4576	Spacer - Mount	2	6	2
92-4354	Roller - Drive	5	2	1	92-4589	U-Channel	8	15	4
92-4355	Roller - Idler	3	1	1	92-4590	Hinge	8	3	2
92-4355	Roller - Idler	5	3	1	92-4592	Support Bracket Assembly	8	10	4
92-4357	Guard-RH Rear	11	1	1	92-4593	Brush Guard Assembly	8	1	1
92-4359	Brace - Hopper	6	12	1	92-4594	Access Flap Assembly	8	2	1
92-4361	Guard - RH Side	11	2	1	93-9084	Decal - Lift Point	12	3	4
92-4362	Bracket - Rear Lift	8	11	2	93-9092	Decal - Warning	12	1	2
92-4363	Bracket - LH Front Lift	1	4	1	93-9529	Decal - KG Value	12	4	4
92-4364	Bracket - RH Front Lift	1	2	1	93-9869	Decal - Danger	12	8	2
92-4370	Chain - Drive	4	17	1	94-1235	Decal - Capacity	12	7	2
92-4371	Tube - Gate Adjustment	9	8	2	95-0101	Plate - Roller Tension	3	6	2
92-4372	Hose Retainer	1	19	2	95-0100	Plate - Spring Anchor	3	13	2
92-4443	Decal - Gate Adjustment	12	9	1	95-0102	Skirt - Side LH	6	2	1
92-4448	Bracket - Lift	13	1	1	95-0103	Skirt - Side RH	6	17	1
92-4453	Chain - Lift	13	2	2	95-0104	Gate	9	1	1
92-4455	Pin - Lacing	5	*	1					

* Not Illustrated

PRODUCT CHANGES

In an effort to make improvements available to TORO owners as quickly as possible minor changes are incorporated into Toro's products from time to time that do not become immediately shown in the Parts Catalog. If such a change has been made in your unit which is not reflected in your manual see your TORO Distributor or an Authorized Service Dealer for information and part numbers.

IDENTIFICATION & ORDERING

MODEL AND NUMBERS

The Topdresser 1800 has two identification numbers; a model number and a serial number. The two numbers are stamped on a plate which is located on the main frame. In any correspondence concerning the Topdresser 1800, supply model and serial numbers to assure that correct information and replacement parts are obtained.

To order replacement parts from your TORO Distributor or an Authorized Service Dealer, supply the following information:

1. Model and serial number of the unit.
2. Part number description and the quantity of part (s) desired.

NOTE: Do not order by reference number if a parts catalog is being used: use the PART NUMBER.

TABLE OF CONTENTS

Description	Page	Description	Page
Base & Frame Assembly	1	Gate Assembly	9
Base Mounting(For Units w/H.D. Hitch Frame) . . .	2	Left Hand Guard Assembly.	10
Idler Roller Assembly	3	Right Hand Guard Assembly	11
Dive Roller Assembly	4	Decals	12
Belt Assembly.	5	Optional Lift Kit - No. 92-4452.	13
Hopper & Manual Tube Assembly	6	Hydraulic Schematic	14
Brush Assembly	7	Part Number Index	15 - 16
Brush Guard & Access Flap Assembly	8		

NOTES

NOTES

