

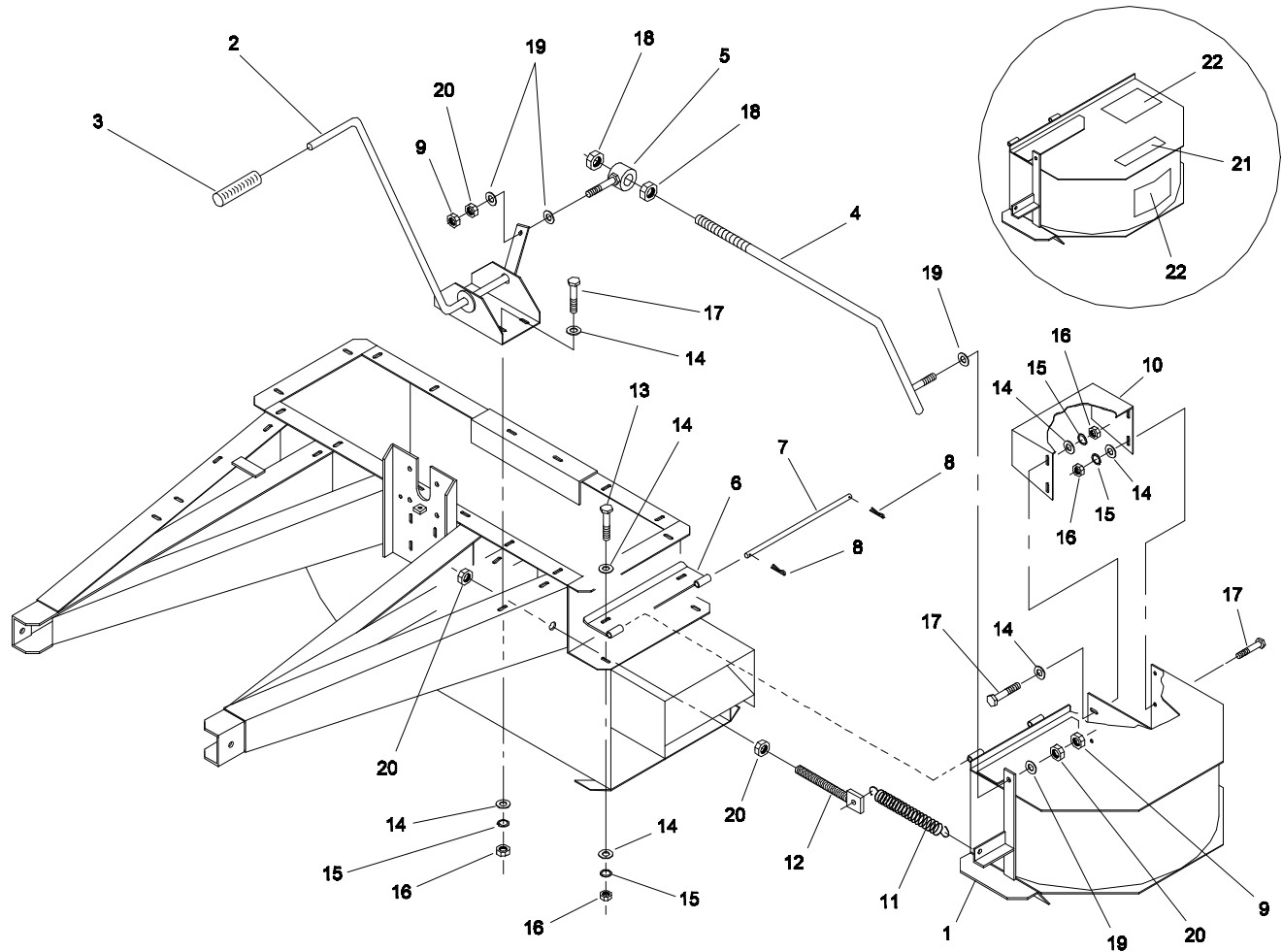


MODEL NO. 44521

PARTS CATALOG

DEFLECTOR KIT

(FOR 2613 DEBRIS BLOWER)



ASSEMBLY & PARTS LIST

61-003

Ref. No.	Part No.	Description	No. Used
1	61-005-0112	Air Reverse Housing	1
2	61-005-0101	Lift Handle Assembly	1
3	01-259-0010	Handle Grip	1
4	61-005-0091	Lift Arm Assembly	1
5	48-005-0591	Reel Lift Tube	1
6	61-005-0031	Hinge Assembly	1
7	61-004-0801	Hinge Pin	1
8	3272-48	Cotter Pin	2
9	3218-5	Jam Nut	2
10	61-004-0791	Reverse Air Deflector	1
11	01-261-0340	Spring	1

Ref. No.	Part No.	Description	No. Used
12	61-005-0991	Spring Bracket Assembly	1
13	323-7	Capscrew - Hex Hd.	2
14	3256-4	Flat Washer	16
15	3253-5	Lock Washer	9
16	3217-7	Hex Nut	9
17	323-6	Capscrew - Hex Hd.	7
18	3217-11	Hex Nut	2
19	3256-6	Flat Washer	4
20	3217-9	Hex Nut	4
21	75-5190	Decal - No Riders	1
22	01-506-0110	Decal - Warning	2

* Not Illustrated

PRODUCT CHANGES

In an effort to make improvements available to TORO owners as quickly as possible minor changes are incorporated into Toro's products from time to time that do not become immediately shown in the Parts Catalog. If such a change has been made in your unit which is not reflected in your manual see your TORO Distributor or an Authorized Service Dealer for information and part numbers.

In an effort to make improvements available to TORO owners as quickly as possible minor changes are incorporated into Toro's products from time to time that do not become immediately shown in the Parts Catalog. If such a change has been made in your unit which is not reflected in your manual see your TORO Distributor or an Authorized Service Dealer for information and part numbers.

IDENTIFICATION & ORDERING

MODEL AND NUMBERS

To order replacement parts from your TORO Distributor or an Authorized Service Dealer, supply the following information:

1. Model and serial number of the unit.
2. Part number description and the quantity of part (s) desired.

NOTE: Do not order by reference number if a parts catalog is being used: use the PART NUMBER.

MODEL AND NUMBERS

To order replacement parts from your TORO Distributor or an Authorized Service Dealer, supply the following information:

2. Part number description and the quantity of part (s) desired.

NOTE: Do not order by reference number if a parts catalog is being used: use the PART NUMBER.

1. Model and serial number of the unit.

[illegible][illegible]