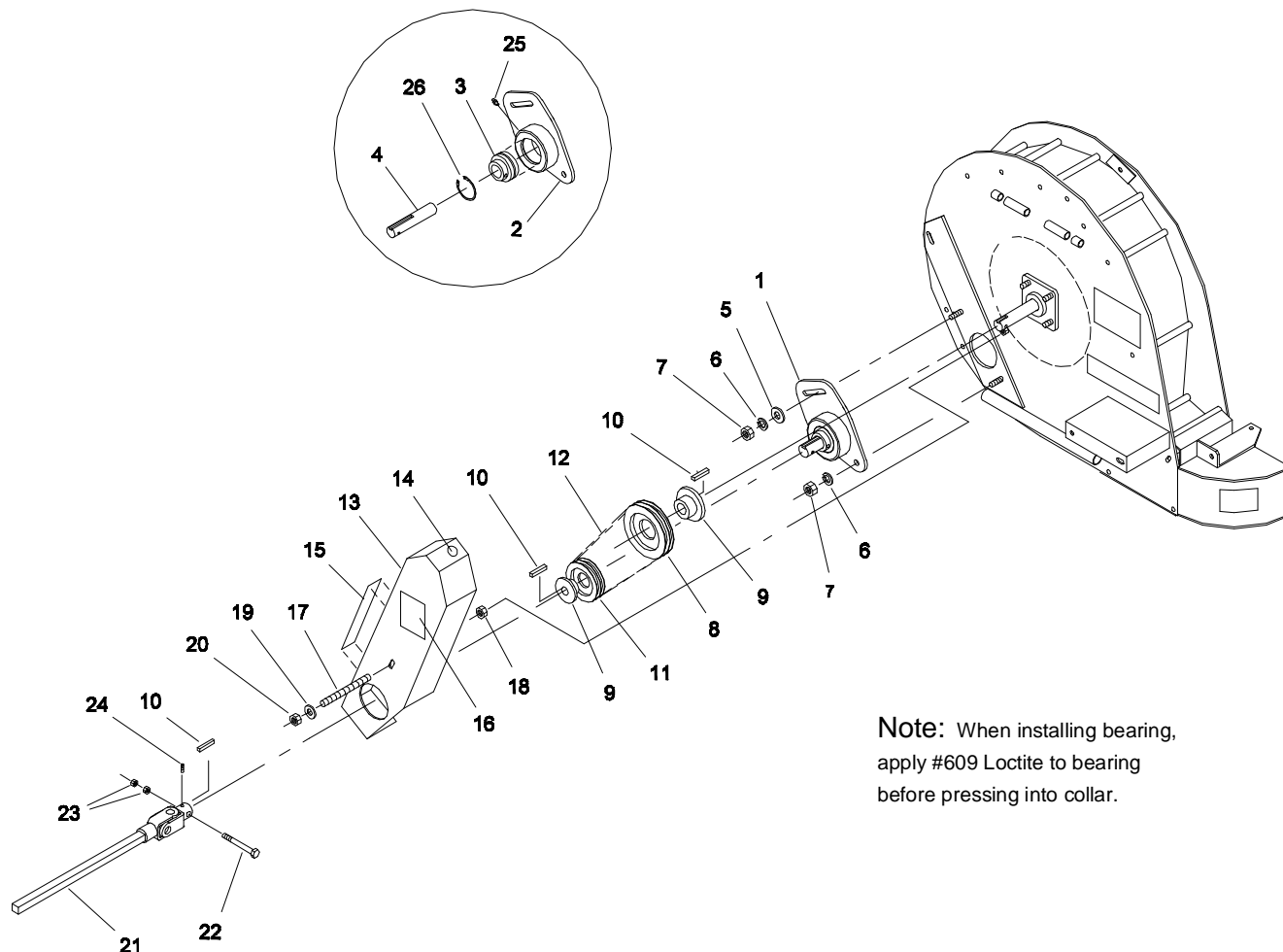




MODEL NO. 44533

PARTS LIST & ASSEMBLY INSTRUCTIONS

67 BLOWER MOUNTING KIT for 220D SERIES GROUNDMASTER®



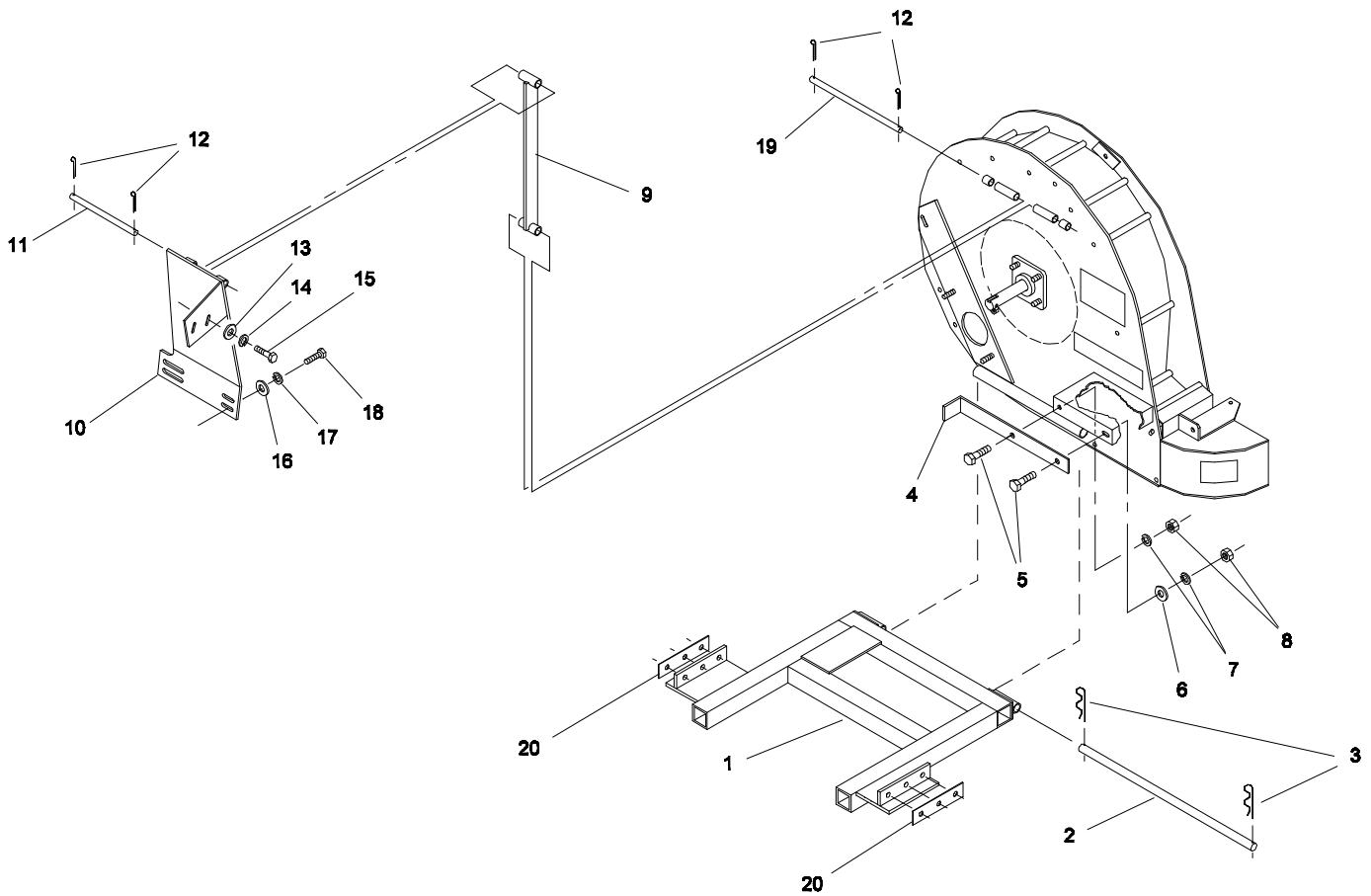
Note: When installing bearing,
apply #609 Loctite to bearing
before pressing into collar.

DRIVE SYSTEM

67-005A

Ref. No.	Part No.	Description	No. Used
1	67-002-2952	Bearing Mount Assembly (Incl. Ref. #2,3,4,25,26)	1
2	67-005-2822	Bearing Mount	1
3	01-100-0340	Bearing (see note)	1
4	67-004-2731	Pulley Shaft	1
5	3256-6	Flat Washer	1
6	3253-7	Lock Washer	2
7	3217-9	Hex Nut	2
8	01-260-0150	Sheave	1
9	01-260-0240	Bushing	2
10	82-004-1171	Key	3
11	01-260-0060	Sheave	1
12	01-264-0350	Belt	1
13	67-005-0241	Belt Guard	1

Ref. No.	Part No.	Description	No. Used
14	58-6520	Decal - Grease	1
15	01-506-0130	Decal - Danger	1
16	01-506-0040	Decal - Danger	1
17	01-650-1090	All Thread	1
18	32153-2	Lock Nut	1
19	3256-4	Flat Washer	1
20	3296-39	Lock Nut	1
21	01-282-0600	PTO Assembly	1
22	322-13	Capscrew - Hex Hd.	1
23	3217-6	Hex Nut	2
24	01-163-0030	Socket Head Set Screw	1
25	01-215-0050	Grease Zerk	1
26	95-0075	Ring - Retaining	1



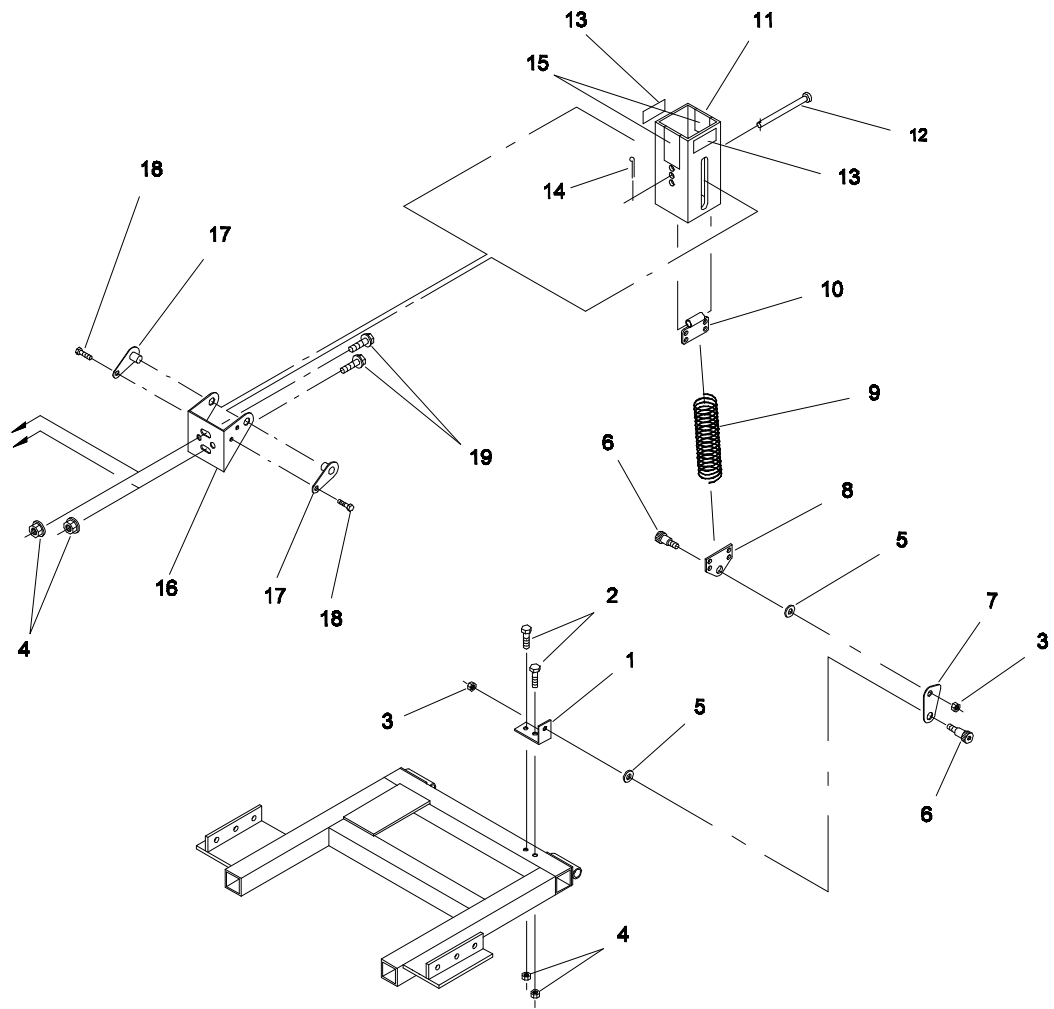
MOUNTING FRAME

67-005B

Ref. No.	Part No.	Description	No. Used
1	67-005-2572	Mounting Frame	1
2	67-004-1161	Lower Mounting Pin	1
3	01-159-0010	Presto Pin	2
4	67-004-2261	Stop Bracket	1
5	325-6	Capscrew - Hex Hd.	2
6	3256-6	Flat Washer	1
7	3253-7	Lock Washer	2
8	3217-9	Hex Nut	2
9	67-005-2411	Support Arm	1
10	67-005-2421	Support Bracket	1

Ref. No.	Part No.	Description	No. Used
11	67-004-2301	Support Pin	1
12	3272-11	Cotter Pin	4
13	3256-2	Flat Washer	2
14	3253-3	Lock Washer	2
15	321-4	Capscrew - Hex Hd.	2
16	3256-4	Flat Washer	4
17	3253-5	Lock Washer	4
18	323-8	Capscrew - Hex Hd.	4
19	67-004-0401	Upper Support Hinge Rod	1
20	67-004-2341	Mounting Shim	2

Mounts on front
of Groundsmaster



COUNTER BALANCE

67SPRG-A

Ref. No.	Part No.	Description	No. Used
1	72-9240	Bracket - Extension	1
2	322-12	Capscrew - Hex Hd.	2
3	3296-44	Lock Nut	2
4	32128-35	Flange Lock Nut	4
5	3256-24	"SAE" Flat Washer	2
6	46-3380	Bolt - Shoulder	2
7	66-8440	Link - Knee	1
8	66-8420	End - Spring	1
9	66-8390	Spring - Extension	1
10	70-7940	End - Spring	1

Ref. No.	Part No.	Description	No. Used
11	70-7970	Assembly - Cover, Spring	1
12	283-69	Pin - Clevis	1
13	55-4300	Decal - Caution	2
14	3290-355	Pin - Hair Cotter	1
15	93-8074	Decal - Blank	2
16	66-8460	Bracket - Mounting	1
17	70-7920	Assembly - Pin, Lock	2
18	12-3270	Screw - Self Tapping	2
19	3234-29	Capscrew - Hex Flange Hd.	2

ASSEMBLY INSTRUCTIONS

67 BLOWER MOUNTING KIT

NOTE: Refer to page 1, "DRIVE SYSTEM", during steps 1 thru 9.

1. Mount the bearing mount assembly (item #1) to the rear housing as shown on page 1. Fasten the bottom bolt with a 1/2" lock washer (item #6) and hex nut (item #7). Tighten but leave nut loose enough to pivot. Fasten the top bolt with a 1/2" flat washer (item #5), lock washer (item #6) and hex nut (item 7). Leave nut loose.
2. Attach the smaller sheave (item #11) to the pulley shaft using a 1-1/4" bushing (item #9).
3. Attach the larger sheave (item #8) to the fan shaft using a 1-1/4" bushing (item #9). Line up the large sheave with the small sheave using a straight edge.
4. Slide the belt (item #12) onto the sheaves.
5. Pivot the bearing mount assembly on the bottom bolt until proper tension is achieved. The belt has a 3/16" deflection with 5 lbs. of force when properly adjusted. Tighten both 1/2" nuts on the bearing mount.
6. Attach the 3/8" x 4-3/16" all thread rod (item #17) to the nut on the housing.
7. Thread the side lock nut (item #18) onto the all thread rod 3/8" from the end.
8. Mount the belt guard (item #13) as shown on page 1. Fasten securely on the all thread rod with a flat washer (item #19) and a standard lock nut (item #20).
9. Connect the PTO (item #21) to the pulley shaft using a 5/16" x 2-3/4" capscREW (item #22) and two (2) hex nuts (item #23).

NOTE: Refer to page 2, "MOUNTING FRAME", during steps 10 thru 14.

10. Attach the stop bracket (item # 4) with two (2) 1/2" x 1-1/2" capscREWS (item #5), flat washer (item #6), lock washers (item #7) and hex nuts (item #8).
11. Attach the support bracket (item #10) to the steering column housing. Secure the bottom four holes with 3/8 x 1-1/2" capscREWS (item # 18), lock washers (item 17) and flat washers (item #16). Secure the two top side holes with 1/4 x 3/4" capscREWS (item #15), lock washer (item #14) and flat washers (item #13).
12. Install the mounting frame (item #1) on the lower tube of the blower using the lower mounting pin (item #2) to attach. Secure on both ends with presto pins (item #3).
13. Line up the holes in the mounting frame and the holes in the right and left lift arms on the Groundsmaster®.
14. Secure with the existing bolts on the Groundsmaster.

Note: Shims (item #20) may be used between mounting frame and lift arms to keep lift arms parallel and prevent binding.

NOTE: Refer to page 3, "COUNTER BALANCE", and Fig. 1 during steps 15 thru 17.

15. Drill two (2) holes in the Groundsmaster using the dimensions shown in Fig. 1.
16. Attach the mounting bracket (item #16) to the front of the Groundsmaster with two (2) 5/16" x 1" hex head flange screws (item #19) and flange lock nuts (item #4).
17. Assemble the Counter Balance assembly as shown in illustrated parts on page 3.

ASSEMBLY INSTRUCTIONS (Continued)

BLOWER MOUNTING ON GM223D, GM225, GM1000L w/HYDRAULIC COUNTERBALANCE

If you have a GM200 series or GM1000L unit with a 62" Recycler deck mounted to it, you will need to do the following:

1. Order lift arms, part numbers 76-3080 & 76-3090, to replace the push arms on the traction unit.
2. Refer to the deck operator manual on the installation of these arms.
3. Mount the blower following the instructions outlined in the blower's operator manual.
4. **DO NOT MOUNT** the new counterbalance spring. The hydraulic counterbalance already installed on the unit provides the counterbalance needed for the blower.

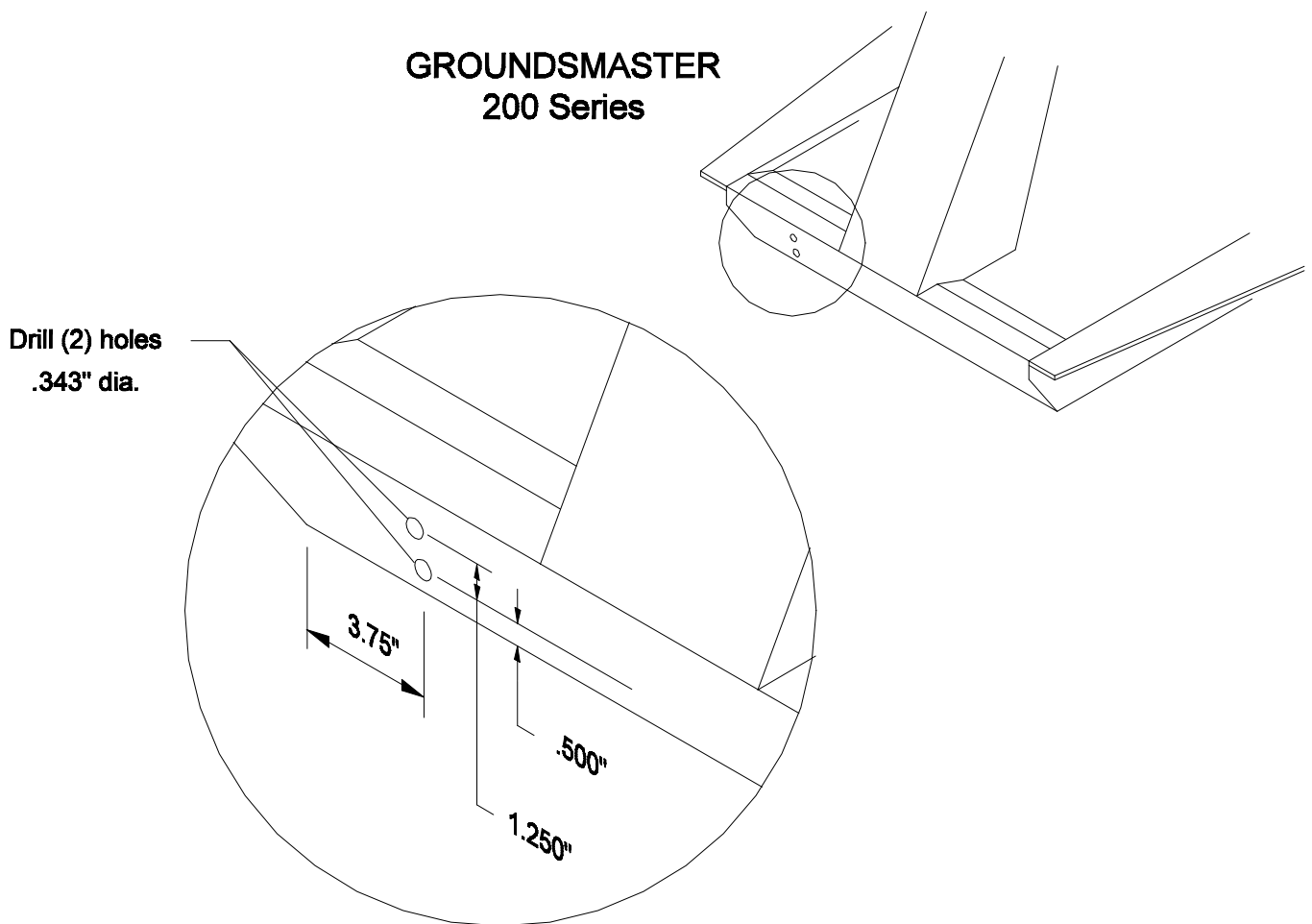


Figure 1

NOTES

NOTES

MAINTENANCE RECORD

[illegible]