



Steering Control Damper Kit

Z-Master® 300 Series

Part No. 105-1666

INSTALLATION
INSTRUCTIONS

Loose Parts

Note: Use the chart below to identify parts for assembly.

DESCRIPTION	QTY.	USE
Lock nut	4	Install dampers
Damper	2	

Remove Front Cover and Seat

- 1. Remove the front cover from the machine. There are 4 bolts to be removed (Fig.1).
- 2. Remove the 2 bolts that hold the seat to the frame (Fig.1).

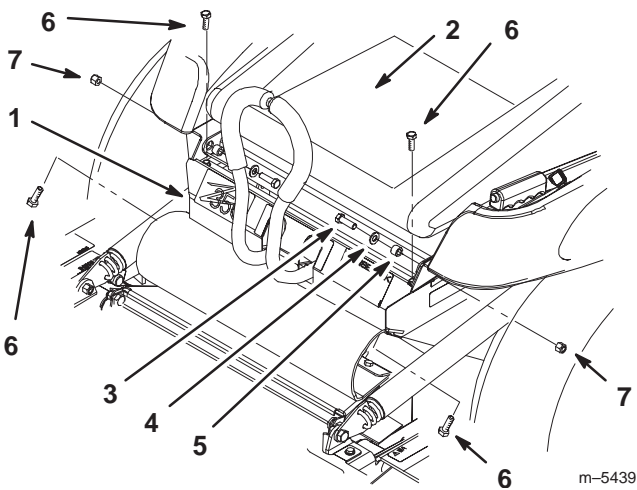


Figure 1

1. Front cover

2. Seat

3. Seat bolt

4. Washer
5. Spacer

6. Cover bolts

7. Nut

Remove Old Dampers and Bracket

1. Disconnect the left and right control rods from the motion control levers (Fig. 2).
2. Remove the old dampers from the bracket and motion control levers (Fig. 2).
3. Remove the three bolts that hold the bracket to the machine frame (Fig. 2).

Note: If there are springs attached to the control system, remove and discard them.

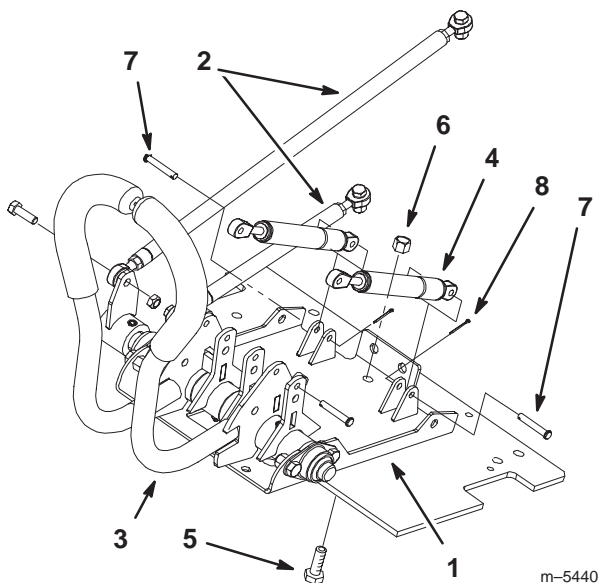


Figure 2

- | | |
|------------------|-----------------|
| 1. Bracket | 5. Bracket bolt |
| 2. Control rods | 6. Bracket nut |
| 3. Control lever | 7. Clevis pin |
| 4. Damper | 8. Cotter pin |

Drill Bracket Holes

1. Bend the outside tabs on the bracket out. This allows for holes to be drilled and dampers installed (Fig. 3).
2. Drill 11/32 in. holes in the inside tabs. You may have to do this at a slight angle (Fig. 3)

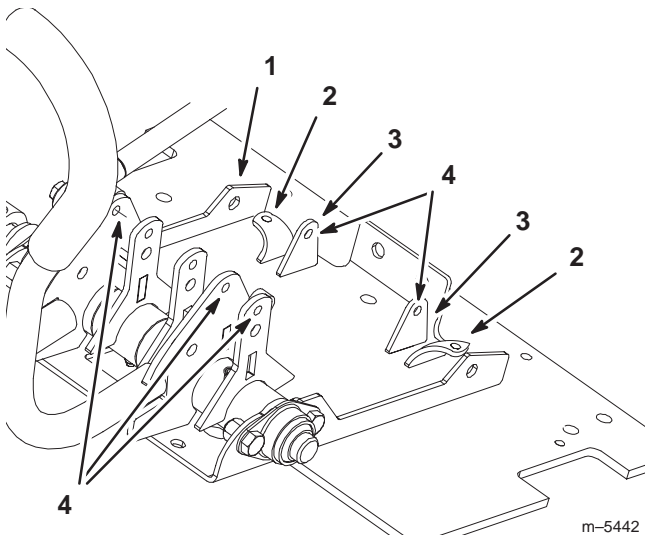


Figure 3

- | | |
|--------------------------|-------------------------------|
| 1. Bracket | 3. Inside tab |
| 2. Outside tab, bent out | 4. Drill 11/32 in. holes here |

Install New Dampers

1. Install dampers, with rod end down, to the bracket (Fig. 4).
2. Secure dampers to bracket with 4 locknuts (Fig. 4). Torque locknuts to 21 ft-lbs.

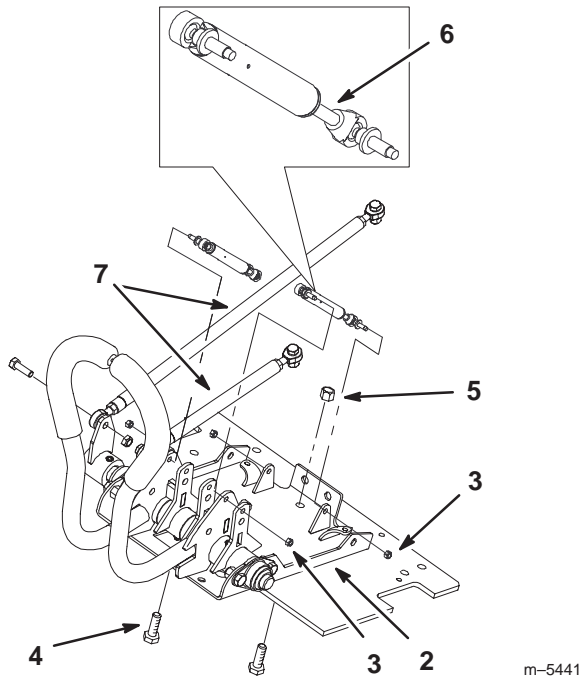


Figure 4

- | | |
|-----------------|-----------------|
| 1. Damper | 5. Bracket nut |
| 2. Bracket | 6. Rod end down |
| 3. Locknuts | 7. Control rods |
| 4. Bracket bolt | |

3. Install bracket with new dampers to machine (Fig. 4).
4. Connect the left and right rod ends to the motion control levers.
5. Install the seat to the machine (Fig.1).
6. Install the front cover (Fig.1).

Check Operation

1. Drive machine and check the wheel tracking with the control levers full forward.
2. If needed, refer to adjusting motion controls in your operator manual.

