



Single-Belt PTO Kit Z-Master® 300 Series	
Part No. 105-1665	INSTALLATION INSTRUCTIONS

Loose Parts

Note: Use the chart below to identify parts for assembly.

DESCRIPTION	QTY.	USE
Rotor	1	Install clutch parts
Pulley and armature	1	
Belt	1	Install clutch and belt

Remove Bumper

1. Remove bumper from the machine (Fig. 1).

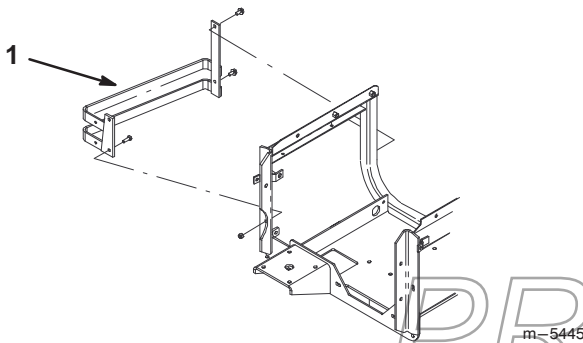


Figure 1

1. Bumper

3. Remove PTO belts from clutch pulley (Fig. 2).
4. Remove bolt from clutch and remove clutch.

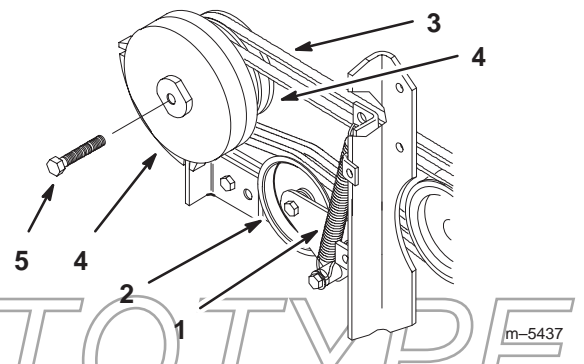


Figure 2

- | | |
|---------------------|------------------|
| 1. Tensioner spring | 4. Clutch pulley |
| 2. Idler | 5. Bolt |
| 3. PTO belts | 6. Clutch |

Remove Clutch

1. Remove tensioner spring on idler (Fig. 2).
2. Disconnect the wire lead from clutch.

Install Clutch Parts

1. Remove the pulley and armature assembly from the clutch assembly (Fig. 3).

2. Drive the rotor post out from the clutch assembly. Remove the rotor from assembly.

Note: Make sure the rotor is replaced with the new one provided.

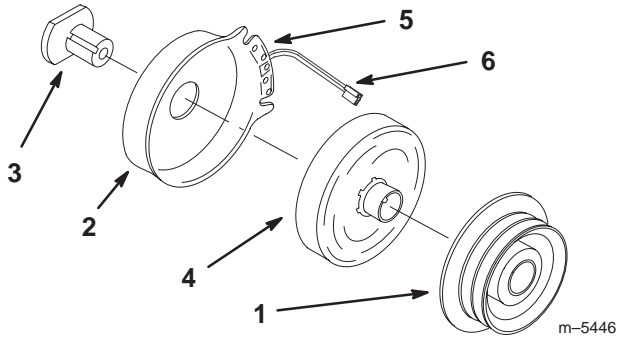


Figure 3

- | | |
|---------------------------------|-------------------|
| 1. Pulley and armature assembly | 4. Rotor |
| 2. Clutch assembly | 5. Clutch magnets |
| 3. Rotor post | 6. Wire lead |

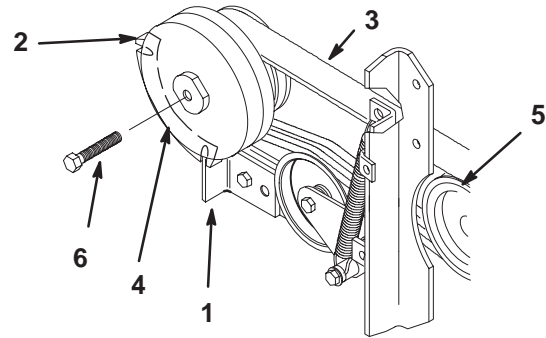


Figure 4

- | | |
|-----------------------------|-------------------|
| 1. Holding bar | 4. Clutch |
| 2. 6 and 9 o'clock position | 5. Gearbox pulley |
| 3. Belt | 6. Bolt |

3. Install new rotor into assembly and onto the rotor post (Fig. 3).
4. Install new armature and pulley onto the rotor and under the clutch magnets (Fig. 3).

Install Clutch and Belt

1. Install new single belt onto gearbox pulley before clutch is installed.
2. Slide clutch onto the drive shaft (Fig. 2).

Note: Make sure clutch is connected to holding bar in the 6 and 9 o'clock position (Fig. 4).

3. Install belt onto clutch pulley (Fig. 4).

Note: Check to make sure the belt is aligned with gear box and clutch pulley. Align the gear box if needed.

4. Install bolt into clutch (Fig. 2). Torque to 50ft.-lbs.

PROTOTYPE