

# Mulch Kit

## For Models with 144 Inch Deck

### Kit No. 142-2744

## Installation Instructions

For Serial Nos. 411,294,212 & Higher

## Safety Alert Symbol

This Safety Alert Symbol (Figure 1) is used both in this instruction sheet and on the machine to identify important safety messages which must be followed to avoid accidents

This symbol means: **ATTENTION! BECOME ALERT! YOUR SAFETY IS INVOLVED!**



Figure 1

Safety Alert Symbol

g000502

The safety alert symbol appears above information which alerts you to unsafe actions or situations and will be followed by the word **DANGER**, **WARNING**, or **CAUTION**.

**DANGER:** Indicates an imminently hazardous situation which, if not avoided, **Will** result in death or serious injury.

**WARNING:** Indicates a potentially hazardous situation which, if not avoided, **Could** result in death or serious injury.

**CAUTION:** Indicates a potentially hazardous situation which, if not avoided, **May** result in minor or moderate injury.

This manual uses two other words to highlight information. **Important** calls attention to special mechanical information and **Note** emphasizes general information worthy of special attention.

## ⚠ WARNING

**While maintenance or adjustments are being made, someone could start the engine. Accidental starting of the engine could seriously injure you or other bystanders.**

**Remove the key from the ignition switch, engage parking brake, and pull the wire(s) off the spark plug(s) before you do any maintenance. Also push the wire(s) aside so it does not accidentally contact the spark plug(s).**

**Note:** Determine the left and right sides of the machine from the normal operating position.

**Note:** Park the machine on a level surface. Make sure all moving parts have stopped, parking brake is engaged, the key has been removed, and the spark plug wire has been disconnected. Allow the machine to cool before starting these instructions.



# Loose Parts

Use the chart below to verify that all parts have been shipped.

Item	Part No.	Description	Qty
1	135-3462	Baffle-Block LH Center	1
2	135-3463	Baffle-Block RH Center	1
3	142-4302	Baffle-LH Wing Block	1

Item	Part No.	Description	Qty
4	142-4739	Baffle-Mulch, LH Inside	1
5	135-7204	Plate-Mulch	1
6	142-6039	Baffle-Wide Outside Mulch	1

**Note:** In some conditions, low lift blades may provide better clipping dispersion.

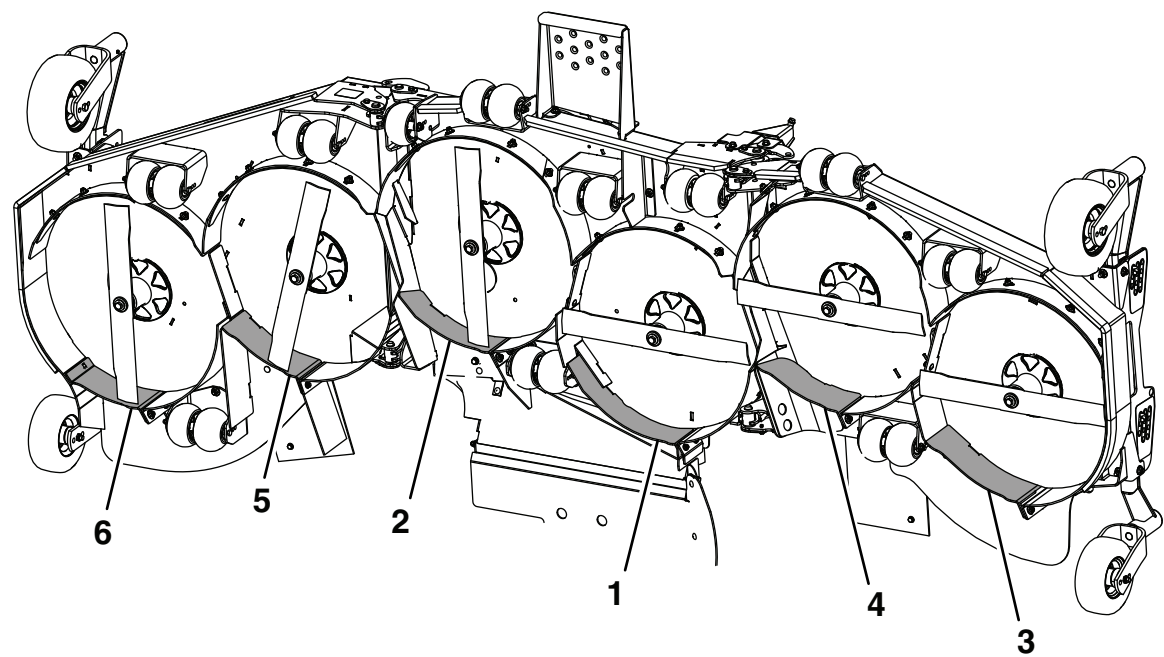
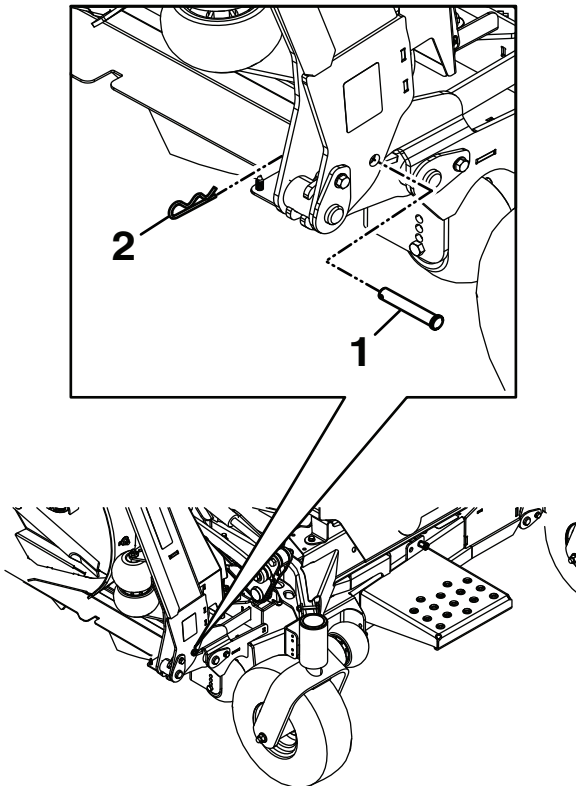


Figure 2

g368419

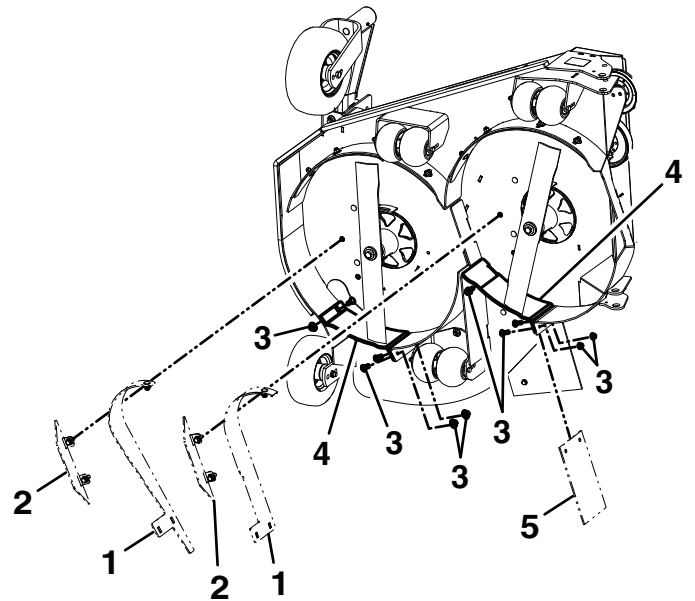
# Installing Instructions

1. Make sure the machine is on a level surface and the PTO is disengaged.
2. Be sure that all persons are clear of the deck wings. Press and hold the top of the deck control switch to raise the deck; the center deck will raise first and then the wings.
3. Stop engine, wait for all moving parts to stop, engage the parking brake remove the key, and disconnect the negative battery cable.
4. Remove the clevis pin and hairpin from the storage location and secure each wing in the up position as shown [Figure 3](#).



**Figure 3**

1. Clevis pin
2. Hairpin



g368618

**Figure 4**

1. Remove and retain the RH wing dogleg baffle
  2. Remove and retain the RH deflect baffle
  3. Reuse hardware
  4. RH block baffle
  5. Remove and retain the rubber flap
- 
6. On the LH wing, remove and retain the discharge fin baffle, dogleg baffle, and all mounting hardware (see [Figure 5](#)). Install the LH block baffles using the hardware retained; some hardware is installed into threaded inserts. Place remaining unused hardware back in the original mounting locations.

5. On the RH wing, remove and retain the RH wing dogleg baffle, deflect baffle, rubber flap, and all mounting hardware. Install the RH block baffles using the hardware retained and place remaining unused hardware back in the original mounting locations (see [Figure 4](#)).

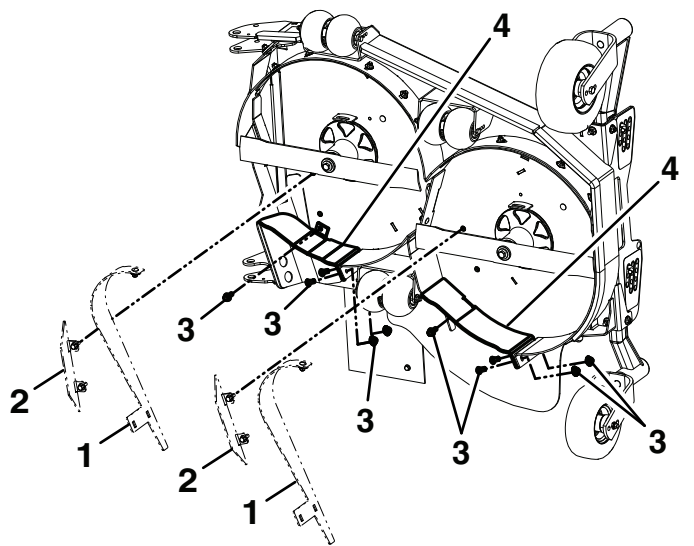


Figure 5

g368617

1. Remove and retain the LH wing dogleg baffle
2. Remove and retain the LH discharge fin baffle
3. Reuse hardware
4. LH block baffle

7. Raise the front of the machine and support with jack stands.

### ⚠ CAUTION

**Raising the mower deck for service or maintenance relying solely on mechanical or hydraulic jacks could be dangerous. The mechanical or hydraulic jacks may not be enough support or may malfunction allowing the unit to fall, which could cause injury.**

**Do Not rely solely on mechanical or hydraulic jacks for support. Use adequate jack stands or equivalent support.**

8. Remove and retain the two center dogleg baffles, breaker baffle, discharge fin, discharge guard, and all mounting hardware (see [Figure 6](#)). Install the RH and LH center block baffles using the hardware retained; some hardware is installed into threaded inserts. Place remaining unused hardware back in the original mounting locations.

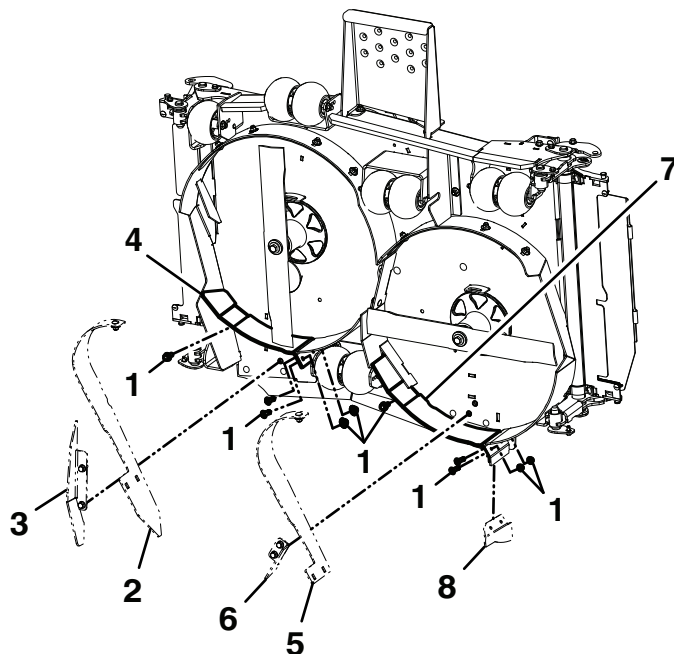


Figure 6

g368616

- |  |  |
|--|--|
| 1. Reuse hardware                            | 5. Remove and retain center LH dogleg baffle |
| 2. Remove and retain center RH dogleg baffle | 6. Remove and retain breaker baffle          |
| 3. Remove and retain discharge fin           | 7. LH center block baffle                    |
| 4. RH center block baffle                    | 8. Remove and retain discharge guard         |

9. Tighten all hardware.
10. Carefully remove the jack stands and lower the machine to the ground.

## Removing the Mulch Kit

To convert the deck back:

1. Stop engine and wait for all moving parts to stop, engage parking brake, remove key, and disconnect the negative battery cable.
2. Remove and retain the LH and RH center block baffles and the LH and RH wing block baffles. Retain all hardware and use it to reinstall the discharge baffles, breaker baffle, dogleg baffles, and the discharge fin.