



Hydraulic Breaker

Dingo[®] Attachment

Model No. 22441—210000001 and Up

Parts Catalog

Ordering Replacement Parts

To order replacement parts, please supply: the part number, the quantity, and the description of each part desired.

Understanding Reference Numbers

Each identified part in an illustration has a reference number. The reference number for a part also appears in the parts list, along with other information about the part.

This catalog uses two special reference number formats, one to indicate parts in a service assembly and another to indicate the quantity of a given part in an illustration.

Service Assembly Reference Numbers

Parts in service assemblies have reference numbers in the form **a:b**. The **a** represents the reference number of the entire service assembly and the **b** represents a sequential number unique to each part within the service assembly.

For example, a wheel assembly might be identified by reference number **6**, the tire by **6:1**, the valve by **6:2**, and the wheel by **6:3**. When you order the assembly identified by reference number **6**, you receive all parts identified by reference numbers **6:1**, **6:2**, and **6:3**. However, you may also order any part individually.

Reference numbers of this type appear in illustrations and in part lists.

Reference Numbers Indicating Quantity

In an illustration, if a reference number indicates more than one part, the reference number has the form **nX y**. The **n** represents the quantity of the part, the **X** is the multiplication symbol, and the **y** represents the reference number.

For example, in an illustration, the reference number **2X 37** means that two of the parts identified by reference number **37** are indicated.

Contents

Description	Page	Description	Page
Breaker Assembly	3		
Breaker Power Head Assembly	4		

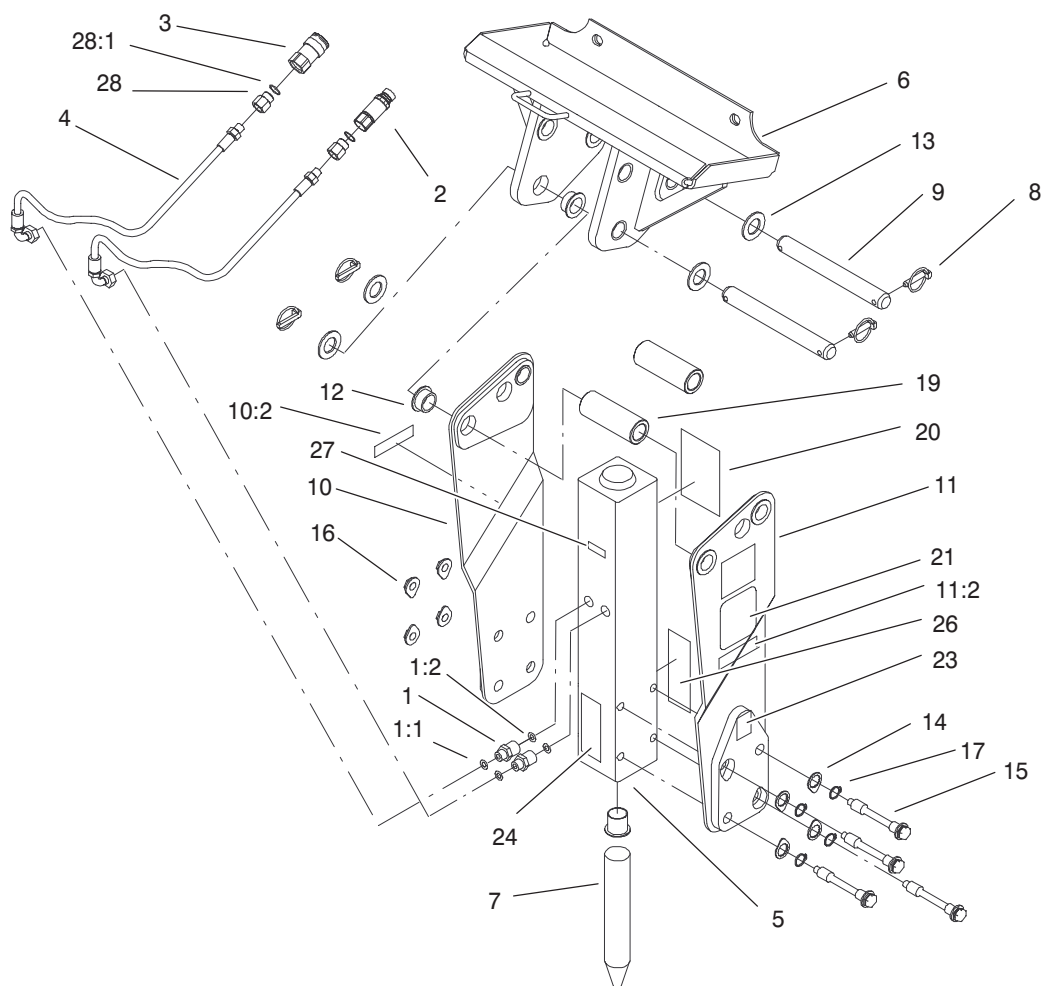
Accessories

Description	Model / Part No.	Description	Model / Part No.
Crossover Relief Valve Kit	99-4360	Flush Face Kit, ORB	100-4744

Part Description Abbreviations

Part descriptions in this catalog may include the following abbreviations.

Abbreviation	Meaning	Abbreviation	Meaning
AR	as required	HYD	hydraulic
ASM	assembly	INC	incorporated
CARR	carriage	LH	left hand
DEG	degrees	NI	nylon insert
FH	flat head	PPH	Phillips pan head
GA	gauge	PTH	Phillips truss head
HF	hex flange	PTO	power take off
HH	hex head	RH	right hand
HHF	hex head flange	SFH	slotted fillister head
HLH	hex lag head	SHH	slotted hex head
HJ	hex jam	SQH	square head
HOC	height-of-cut	SHWH	slotted hex washer head
HS	hex socket	SPH	slotted pan head
HSBH	hex socket button head	SRH	slotted round head
HSFH	hex socket flat head	STD	standard
HSH	hex socket head	TAP	self tapping
HWH	hex washer head	TTH	Torx truss head
HWHTF	hex washer head thread forming	WH	wing head



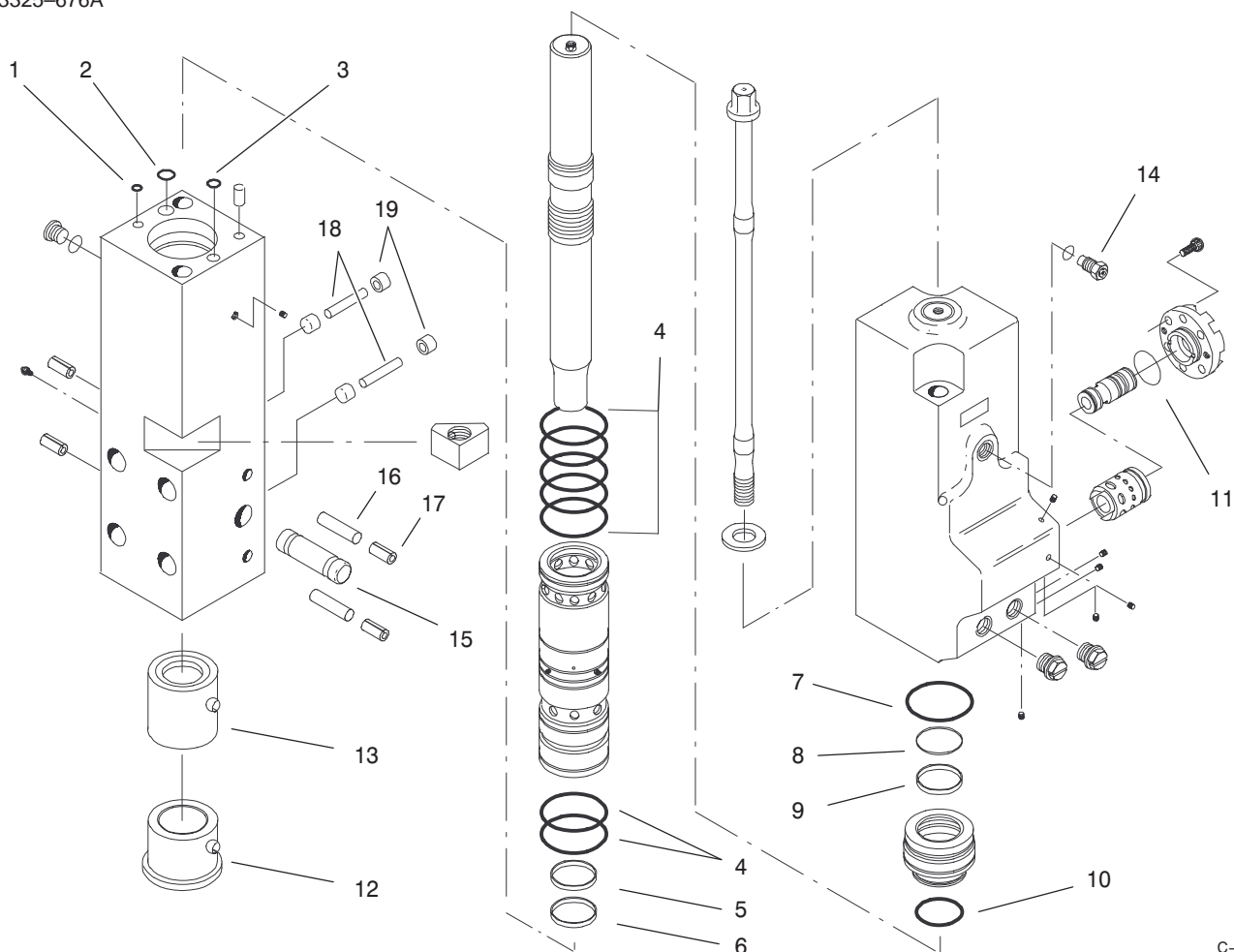
Sheet No.:1

Breaker Assembly

Ref. No.	Part No.	Qty.	Description
1	340-6	2	Fitting-HYD, Straight
1:1	237-30	1	O-Ring
1:2	237-80	1	O-Ring
2	100-4701	1	Nipple-Connect, Pressure
*2:1	100-6120	1	Kit-Seal
3	100-4234	1	Coupler-Face, Flush
*3:1	100-6119	1	Kit-Seal
4	99-1652	2	Hose - Hydraulic
5	99-4309	1	Power Head - Breaker
6	99-4310	1	Assembly - Attach Plate
7	99-4312	1	Tool Bit
8	99-4314	4	Pin - Lynch
9	99-4315	2	Pin - Mounting
10	99-4365	1	Side Plate-Service, LH
10:2	99-4353	1	Decal-Ce Composite
11	99-4366	1	Side Plate-Service, RH
11:2	99-4353	1	Decal-Ce Composite
12	99-4318	10	Bushing - Breaker
13	99-4319	4	Washer
14	99-4339	4	Lock Plate
15	99-4340	4	Bolt-Side Plate
16	99-4341	4	Nut - Side Plate

Ref. No.	Part No.	Qty.	Description
17	99-4342	4	Snap Ring
19	99-4345	2	Spacer
20	99-4348	1	Decal-Maintenance
21	99-4349	1	Decal-Logo, Dingo
23	99-4351	2	Decal-Flag, USA
24	99-4352	1	Decal-Not Underwater
26	99-4354	1	Decal-Grease
27	99-4356	1	Decal-Nitrogen
28	100-4617	2	Adapter-Hydraulic
28:1	237-80	1	O-Ring
*99	99-4364	1	Tool-Line Cut, Asphalt
*99	99-4363	1	Tool-Line Cut Chisel

* Not illustrated



C-2812

Breaker Power Head Assembly

Ref. No.	Part No.	Qty.	Description
†1		1	O-Ring
†2		1	O-Ring
†3		1	O-Ring
†4		7	O-Ring
†5		1	Seal-Rod
†6		1	Wiper-Rod
†7		1	O-Ring
†8		1	Modified Quad Ring
†9		1	Seal- Rod
†10		1	O-Ring
†11		1	O-Ring
12	99-4382	1	Bushing-Lower
13	99-4383	1	Bushing-Upper
14	99-4384	1	Valve-Charge
15	99-4385	1	Retainer-Tool
16	99-4386	2	Pin-Dowel
17	99-4387	4	Pin-Spiral
18	99-4388	2	Pin-Retainer
19	99-4389	4	Spring-Retainer
*	99-4370	1	Seal Kit (Incl. Ref. #1-11)

Ref. No.	Part No.	Qty.	Description

† Not Serviced Separately

Maintenance Record

[illegible]

Maintenance Record

[illegible]

Maintenance Record

[illegible]

