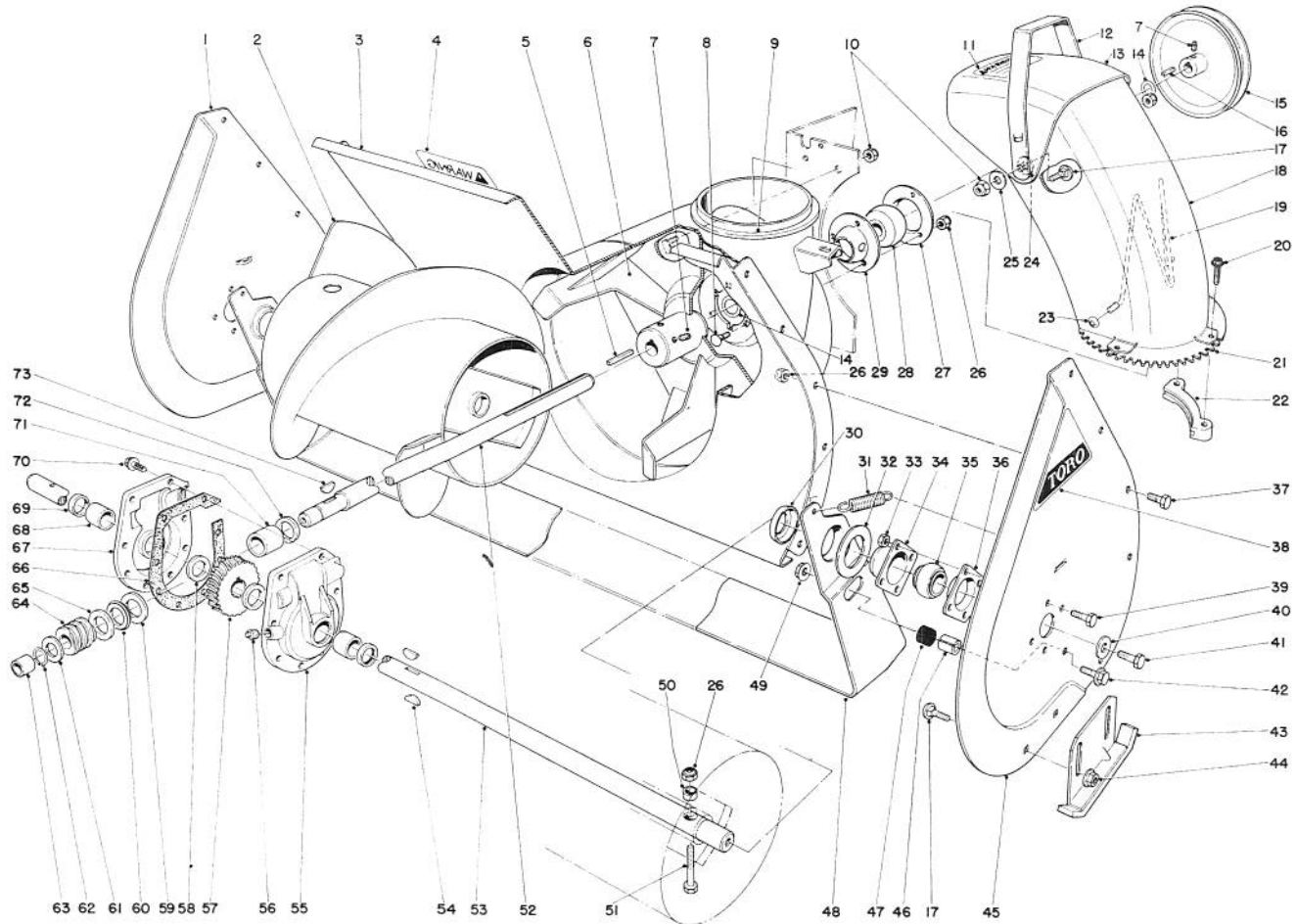


TORO

MODEL NO. 31625-700001 & UP
MODEL NO. 31677-700001 & UP

PARTS CATALOG

524 AND 724 SNOWTHROWERS

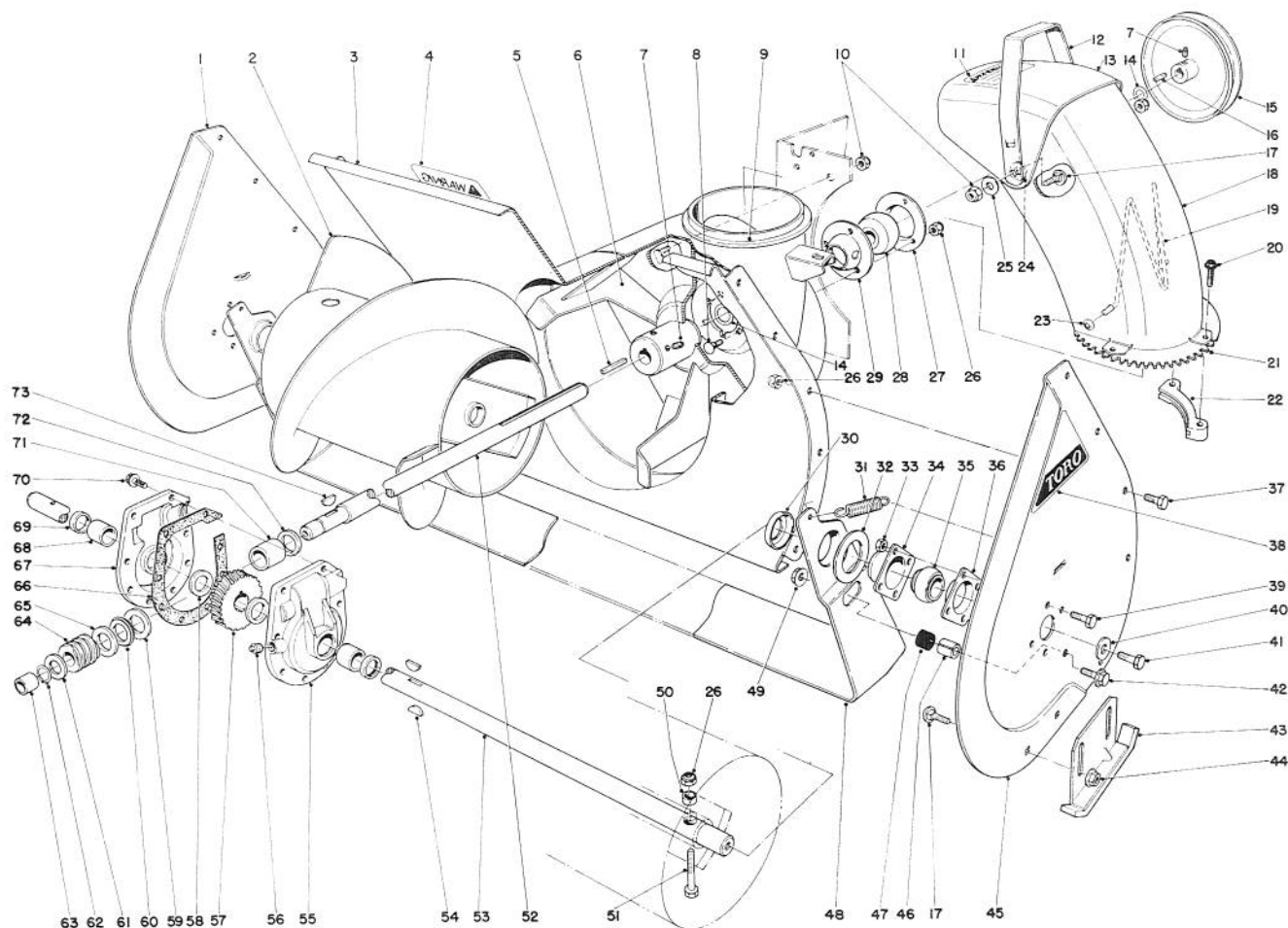


AUGER ASSEMBLY

Ref. No.	Part No.	Description	No. Used
1	20-1360	Side Plate Auger — Right	1
2	26-6140	Auger Right	1
*	26-6150	Auger Left	1
3	26-6090	Auger Housing	1
4	22-8130	Decal — Auger Warning	1
5	6-8590	Key — Impeller	1
6	20-1260	Impeller	1
7	3242-4	Set Screw	4
8	3230-10	Carriage Bolt	3
9	17-5180	Chute Ring	1
10	32152-2	Locknut	6
11	22-8730	Decal Chute Warning	1
12	20-1410	Handle Deflector	1
13	20-1400	Deflector Chute	1
14	3-0737	Thrust Washer	2

Ref. No.	Part No.	Description	No. Used
15	20-1310	Pulley Impeller	1
16	3-6857	Key Square	1
17	3231-27	Carriage Bolt	6
18	20-1390	Chute	1
19	12-2040	Wire Chute	1
20	27-0210	Screw Special	4
21	20-1370	Swivel Gear Chute	1
22	25-6140	Retainer Chute	1
23	3290-326	Pushnuts	2
24	20-4320	Washer—Rubber	2
25	3290-340	Washer—Belleville	2
26	32152-1	Locknut	15
27	26-6120	Bearing Flange—Rear	1
28	26-6100	Bearing Impeller	1
29	26-6110	Bearing Flange—Front	1

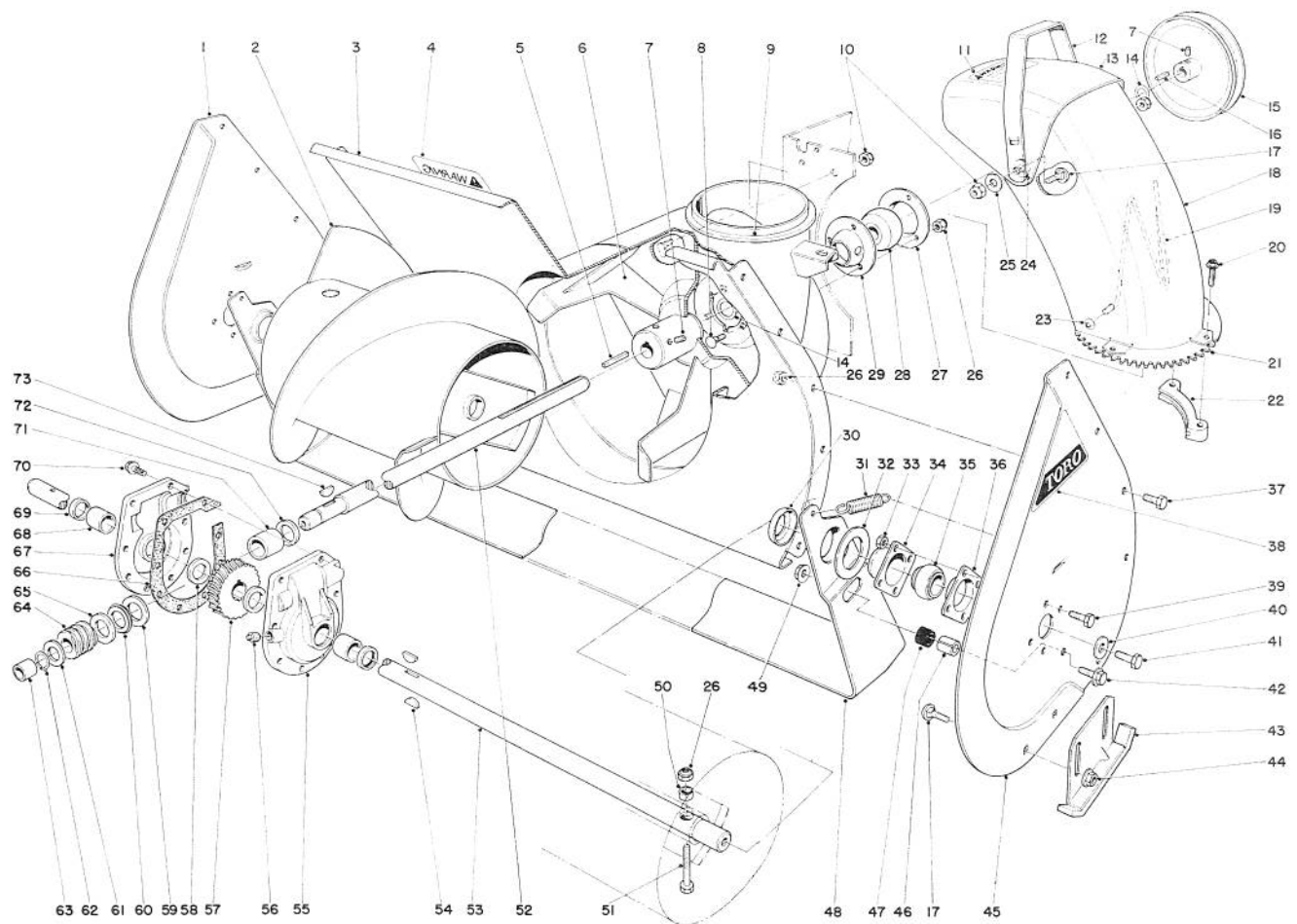
* Not Illustrated



AUGER ASSEMBLY (Continued)

Ref. No.	Part No.	Description	No. Used
30	26-6400	Positioner—Scraper Blade	2
31	5-7290	Spring—Scraper Blade	2
32	20-0300	Spacer—Scraper Blade	1
33	32152-4	Locknut	8
34	20-0990	Bearing Flange Auger Front	2
35	20-0980	Bearing Auger	2
36	20-1000	Bearing Flange Auger Rear	2
37	322-2	Capscrew	10
38	17-6500	Decal Auger Side Plate	2
39	321-3	Capscrew	8
40	3-0750	Washer	2
41	323-6	Capscrew	2
42	3234-11	Hex Flange Bolt	2
43	20-2850 5/8 20-2840	Skid	2
44	3290-357	Flange Nut	4
45	20-1340	Side Plate Auger Left	1
46	25-5140	Standoff—Scraper Blade	2
47	25-5150	Bumper—Scraper Blade	2
48	20-1320	Scraper Blade	1
49	32128-21	Locknut	2
50	25-5090	Spacer—Auger Hub	2
51	17-7030	Auger—Bolt	2

Ref. No.	Part No.	Description	No. Used
52	20-1180	Shaft Impeller	1
53	20-1170	Shaft Auger	1
54	3257-33	Key Woodruff	2
55	19-6970	Gear Case Assembly L.H. (Include Ref. # 68 & 69)	1
56	281-1	Pipe Plug	1
57	5-7180	Worm Gear	1
58	252-71	Thrust Bearing	2
59	252-78	Thrust Washer	1
60	252-76	Thrust Bearing	1
61	3-8664	Thrust Washer	1
62	32120-72	Retaining Ring	1
63	256-32	Bushing	1
64	5-7170	Worm	1
65	252-77	Thrust Washer	1
66	19-8520	Gasket	1
67	19-6980	Gear Case Assembly R.H. (Include Ref. # 68 & 69)	1
68	256-237	Bushing	2
69	7-0045	Oil Seal	2
70	32144-11	Thread Forming Screw	8
71	20-3210	Bushing	1

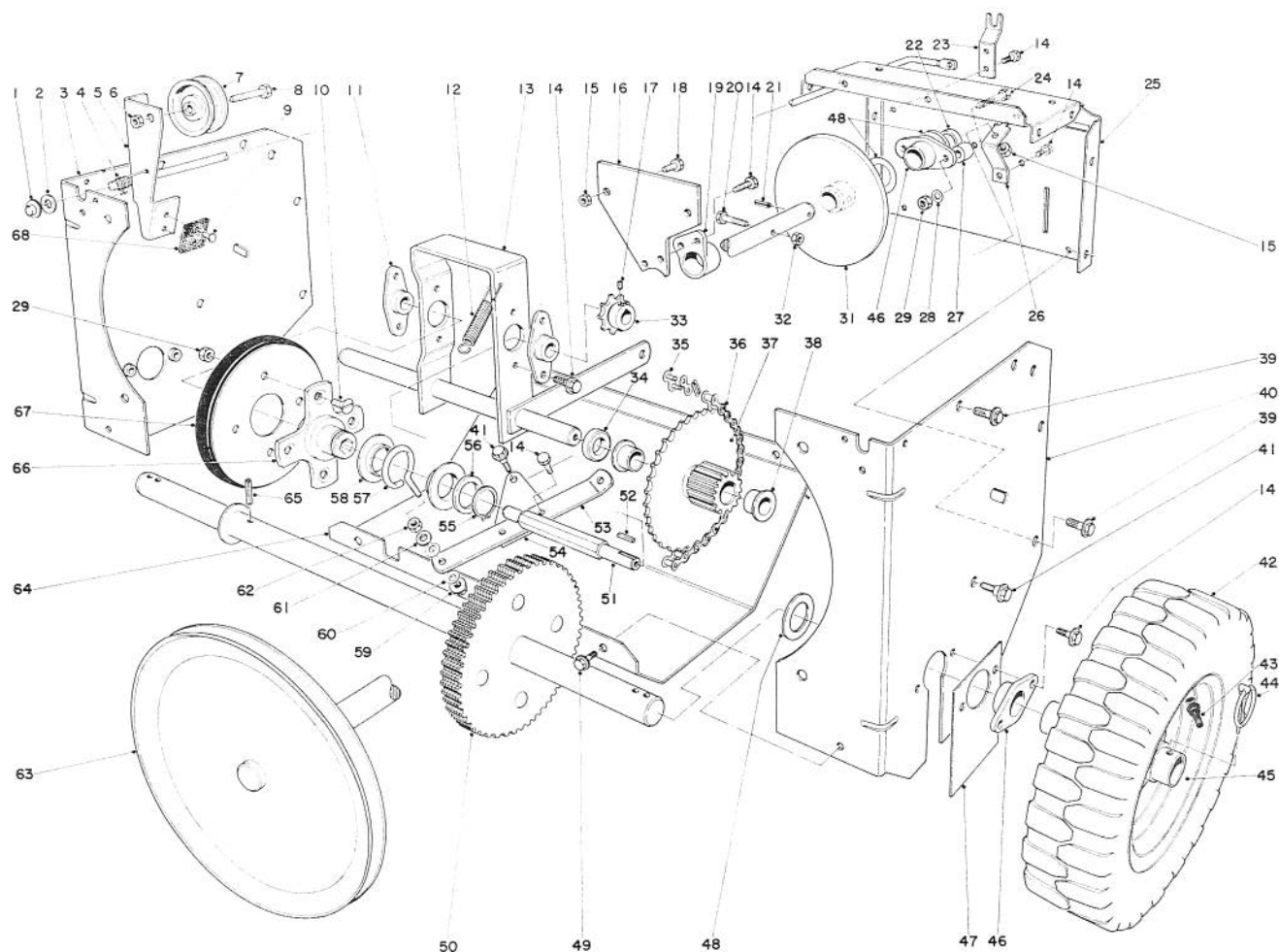


AUGER ASSEMBLY (Continued)

Ref. No.	Part No.	Description	No. Used
72	237-87	Oil Seal	1
73	3257-23	Woodruff Key	1

Ref. No.	Part No.	Description	No. Used
*	19-7000	Gear Case Assembly Complete	1
*	20-0690	Drift Breaker Kit (Optional)	1

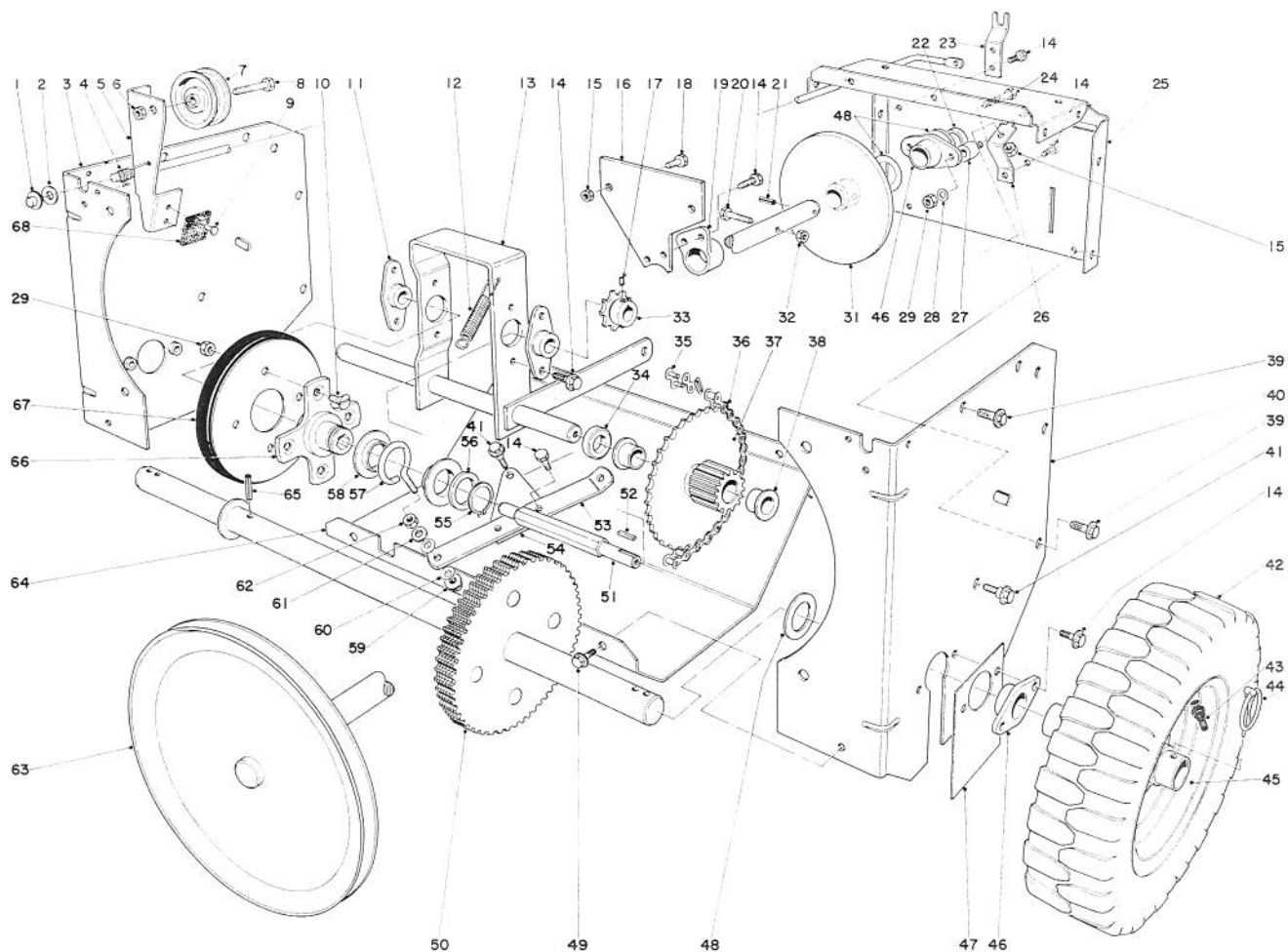
*Not Illustrated



TRACTION ASSEMBLY

Ref. No.	Part No.	Description	No. Used
1	3290-383	Pushnut	1
2	3256-25	Flat Washer	1
3	20-1420	Side Plate Traction	1
4	20-1160	Torsion Spring Clutch	1
5	25-5950	Clutch Rod (Incl. Ref. #9)	1
6	32146-2	Locknut	1
7	3-4244	Idler Pulley	1
8	323-29	Capscrew	1
9	3295-23	Rivet	2
10	32108-94	Screw Flat Head	4
11	20-1620	Bearing Friction Wheel	2
12	11-4640	Spring—Clutch Control	1
13	20-1580	Pivot Shaft	1
14	32144-11	Screw Thread Forming	15
15	32152-1	Locknut	3
16	22-9470	Bracket — Shaft Support	1
17	3245-32	Set Screw	2
18	322-2	Capscrew	2
19	27-7850	Bearing—Drive Shaft	1
20	321-33	Capscrew	1
21	32121-6	Roll Pin	1
22	26-6370	Spacer Drive Shaft	1

Ref. No.	Part No.	Description	No. Used
23	20-1080	Support Clutch Rod	1
24	322-8	Capscrew	2
25	26-6360	Frame Center	1
26	20-1760	Pivot Bracket	1
27	26-6380	Standoff Drive Shaft	2
28	3256-23	Washer	2
29	32146-5	Locknut	6
31	20-1550	Friction Plate	1
32	32152-4	Locknut	1
33	5-9820	Sprocket	1
34	3-7384	Spacer	1
35	2710-6	Connecting Link	1
36	20-1810	Chain	1
37	20-1640	Gear & Bushing (Incl. Ref. #38)	1
38	3-1506	Bushing—Flanged	2
39	32144-15	Hex Hd. Thread Forming Screw	8
40	20-1430	Side Plate Traction	1
41	11-8140	Shoulder Screw	3
42	231-80	Tire	2
43	232-27	Valve Stem	2
44	3290-243	Klik Pin	2



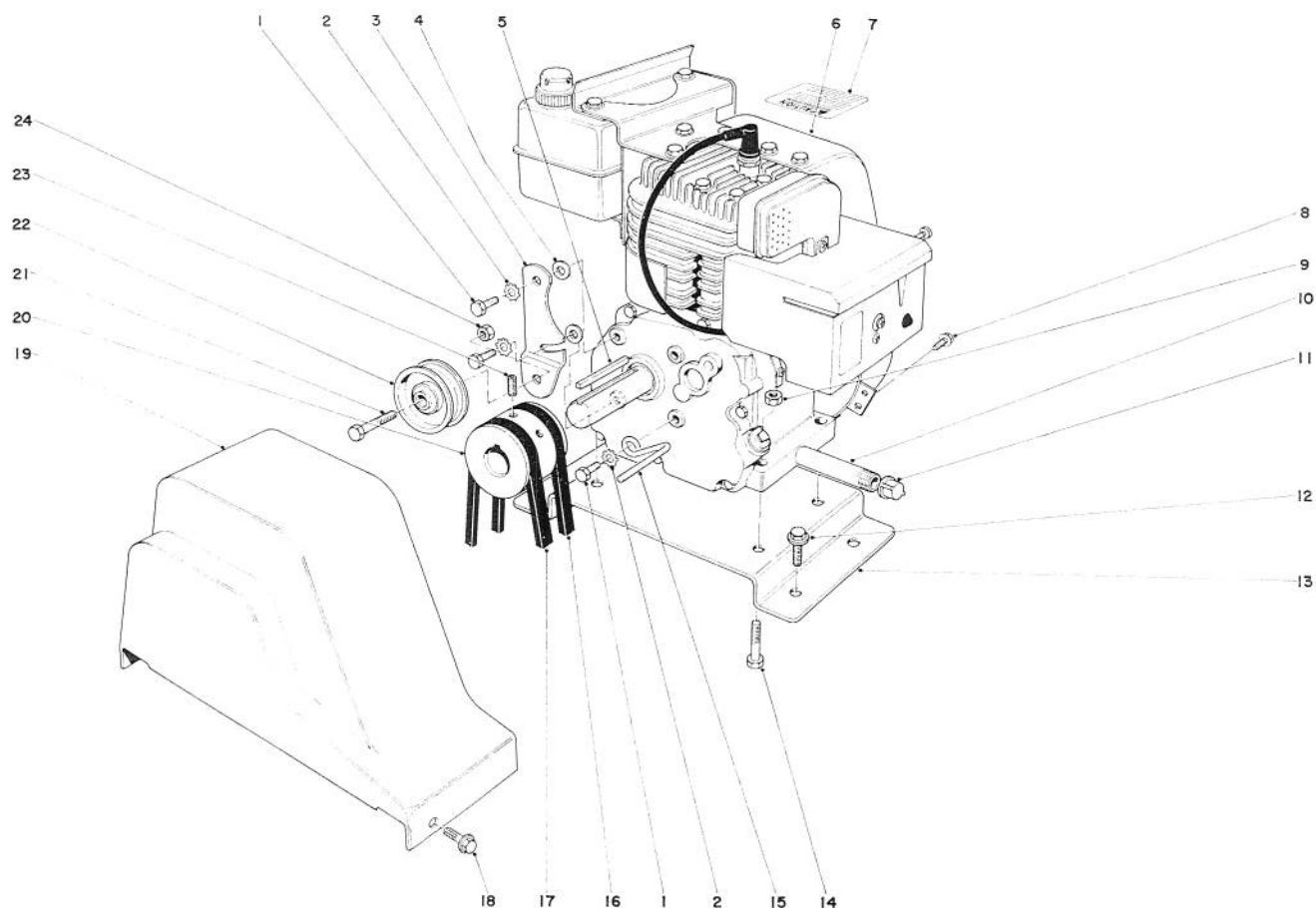
TRACTION ASSEMBLY (Continued)

Ref. No.	Part No.	Description	No. Used
45	20-1750	Wheel	2
46	20-1730	Bearing Axle	3
47	20-1720	Cover	1
48	3-0737	Thrust Washer	5
49	32144-10	Screw Thread Forming	4
50	20-1680	Axle & Gear	1
51	20-1630	Shaft Friction Wheel	1
52	3-6168	Square Key	1
53	20-1780	Linkage Shift	1
54	20-1770	Pivot Plate	1
55	32151-36	Snap Ring	1
56	252-71	Thrust Bearing	1
57	11-8050	Slider Ring Collar	1
58	11-8080	Ring-Slider	2

Ref. No.	Part No.	Description	No. Used
59	32128-12	Flange Nut	1
60	3290-212	Spring Washer	2
61	3256-45	Flat Washer	2
62	32146-12	Nut	1
63	22-7930	Drive Shaft	1
64	20-1840	Lower Shield	1
65	32121-9	Roll Pin	1
66	20-3310	Hub Traction Disc	1
67	3-5461	Disc Assembly	1
68	20-3100	Brake Pad	1
†	20-9800	Tire Chain Kit	1
*	6-6439	Loose Parts Kit (Model 31625)	1
*	6-6489	Loose Parts Kit (Model 31677)	1

†Optional Equipment

*Not Illustrated

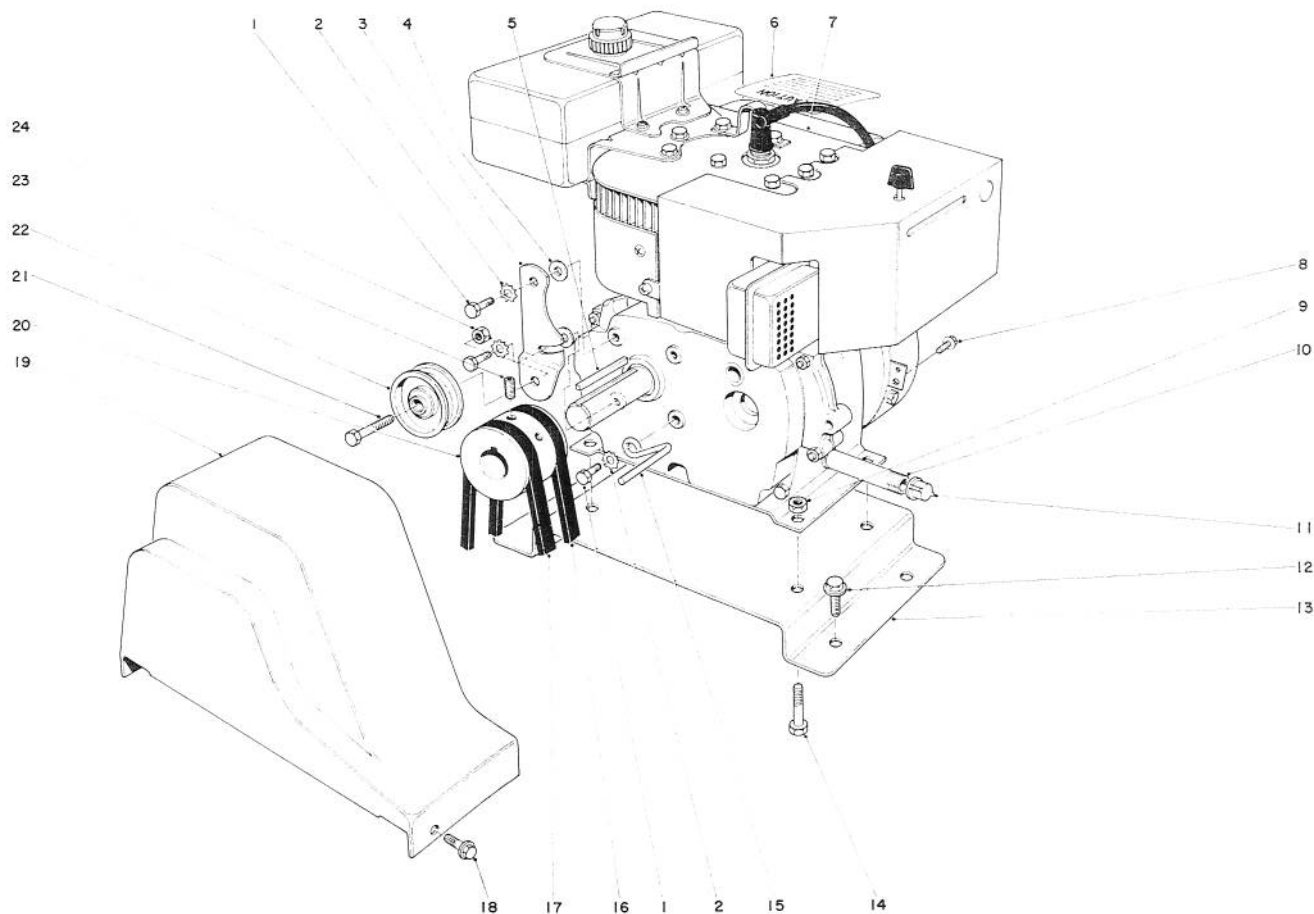


ENGINE ASSEMBLY (Model No. 31625)

Ref. No.	Part No.	Description	No. Used
1	3210-2	Capscrew	3
2	3255-8	Lockwasher Ext	3
3	20-1800	Idler Arm	1
4	3256-23	Flat Washer	2
5	5-0930	Key	1
6	221-496	Engine	1
7	22-9990	Decal — Hazards Caution	1
8	12-3270	Screw Special	1
9	32152-1	Locknut	4
10	289-34	Pipe Nipple	1
11	288-2	Pipe Cap	1
12	32144-15	Hex Hd. Thread Forming Screw	4
13	25-5990	Mounting Plate Engine	1

Ref. No.	Part No.	Description	No. Used
14	322-7	Hex Hd. Capscrew	4
15	17-5530	Belt Retainer	1
16	20-1820	V-Belt Traction	1
17	26-9670	V-Belt Auger	1
18	32144-10	Screw Thread Forming	2
19	20-1830	Belt Guard	1
20	21-4100	Pulley	1
21	323-29	Capscrew	1
22	3-4244	Idler Pulley	1
23	3246-14	Set Screw	2
24	32146-2	Locknut	1
†	23-3790	Starter Kit	1

†Optional Equipment

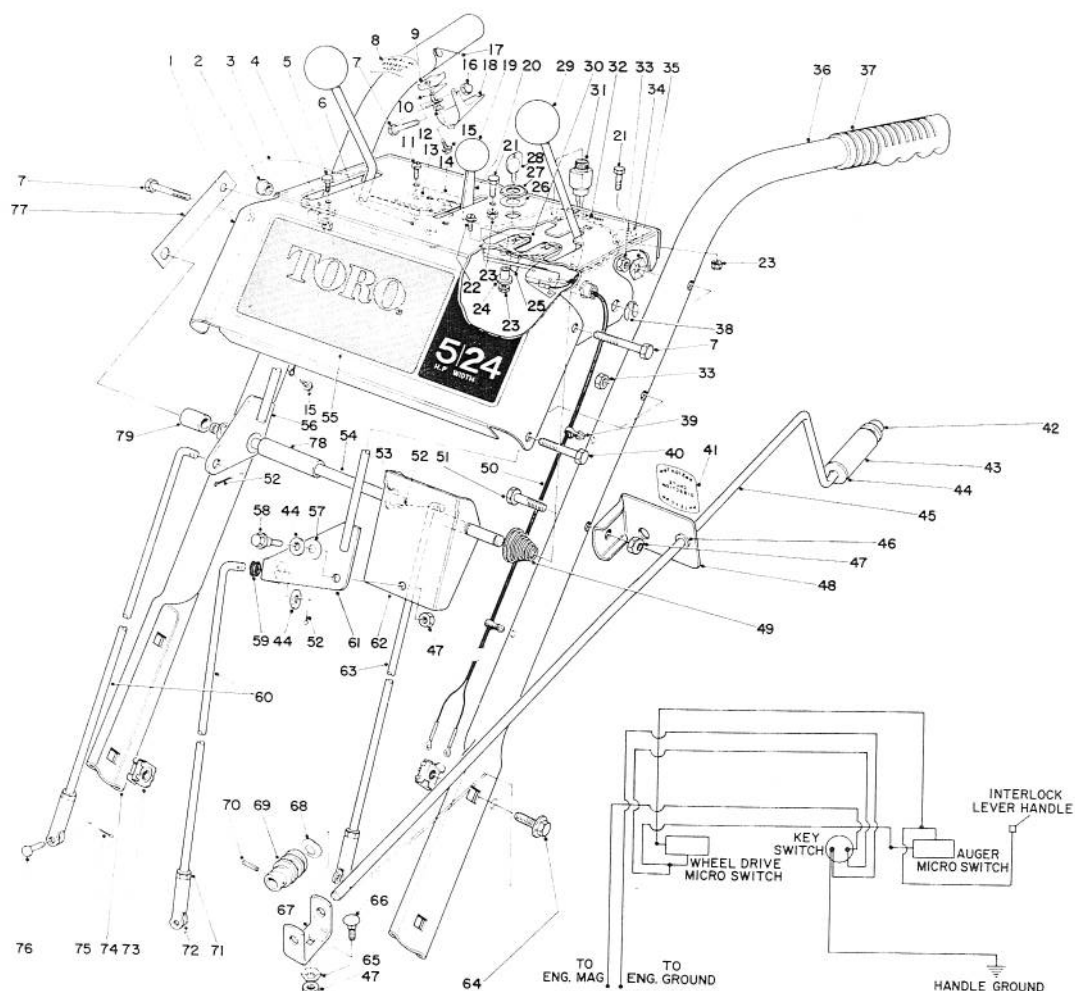


ENGINE ASSEMBLY (Model No. 31677)

Ref. No.	Part No.	Description	No. Used
1	3210-2	Capscrew	3
2	3255-8	Lockwasher Ext	3
3	20-1800	Idle Arm	1
4	3256-23	Flat Washer	2
5	5-0930	Key	1
6	221-497	Engine	1
7	22-9990	Decal—Hazards Caution	1
8	12-3270	Screw Special	1
9	32152-1	Locknut	4
10	289-34	Pipe Nipple	1
11	288-2	Pipe Cap	1
12	32144-15	Hex Hd. Thread Forming Screw	4
13	25-5990	Mounting Plate Engine	1

Ref. No.	Part No.	Description	No. Used
14	322-2	Hex Hd. Capscrew	4
15	17-5530	Belt Retainer	1
16	20-1820	V-Belt Traction	1
17	26-9670	V-Belt Auger	1
18	32144-10	Screw Thread Forming	2
19	20-1830	Belt Guard	1
20	21-4100	Pulley	1
21	323-29	Capscrew	1
22	3-4244	Idle Pulley	1
23	3246-14	Set Screw	2
24	32146-2	Locknut	1
*	25-9150	Decal Replacement Serial Plate	1

* Not Illustrated

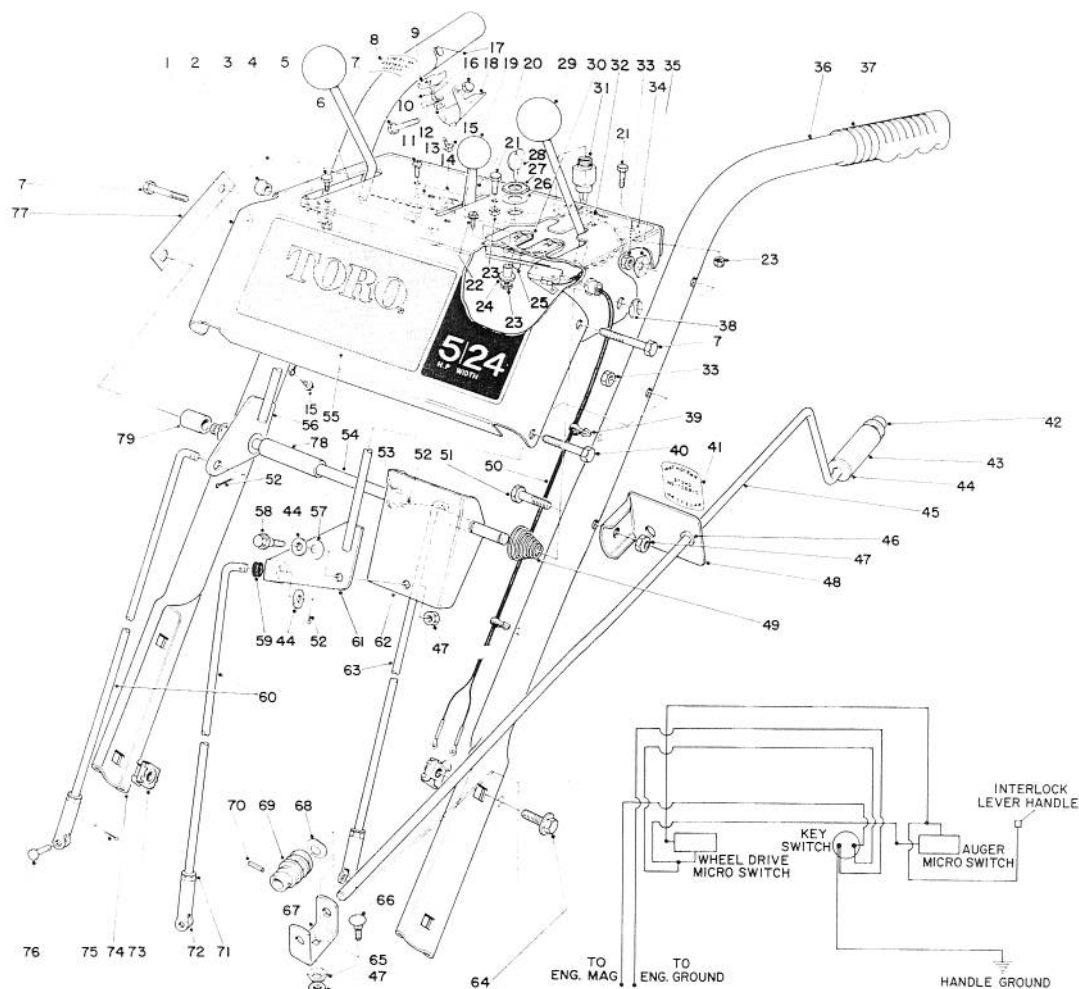


HANDLE ASSEMBLY

Ref. No.	Part No.	Description	No. Used
1	23-2350	Escutcheon	1
2	2410-33	Snap Bushing	1
3	25-5970	Wire Assembly	1
4	20-2810	Mounting Clamp	1
5	32104-76	Self Tapping Screw	1
6	3290-354	Clip	2
7	321-11	Capscrew	3
8	25-6490	Decal—Safety Interlock	1
9	17-5680	Insulator—Interlock	1
10	17-5690	Interlock Contact	1
11	3290-313	Pan Head Machine Screw	4
12	17-5700	Washer—Insulator	1
13	12-3320	Switch—Micro	2
14	22-7950	Switch Mounting Pad	1
15	32104-75	Screw Self Tapping	2
16	32111-7	Nut Acorn	1
17	17-5720	Spring—Interlock	1
18	27-0450	Lever Interlock	1
19	233-36	Knob	1
20	25-7850	Throttle Control (Model 31625)	1

Ref. No.	Part No.	Description	No. Used
*	17-5520	Throttle Control (Model 31677)	1
21	32140-99	Hex Sems Screw	4
22	3251-4	Machine Screw	2
23	32146-18	Locknut	6
24	22-9740	Spacer Interlock	2
25	22-9730	Spring Interlock	1
26	3254-5	Lockwasher	1
27	218-461	Hex Nut	1
28	218-487	Key (Set of 2)	1
29	233-21	Knob	2
30	22-9750	Slide Interlock	1
31	25-6420	On—Off Switch	1
32	25-6370	Decal Instruction	1
33	32152-4	Locknut	4
34	2412-51	Clamp	2
35	3290-257	Washer—Pyramidal	2
36	25-6040	Handle Left	1
37	6-0450	Handle Grip	2
38	32151-43	Klip Ring	4
39	17-9120	Wire Mount	2

* Not Illustrated



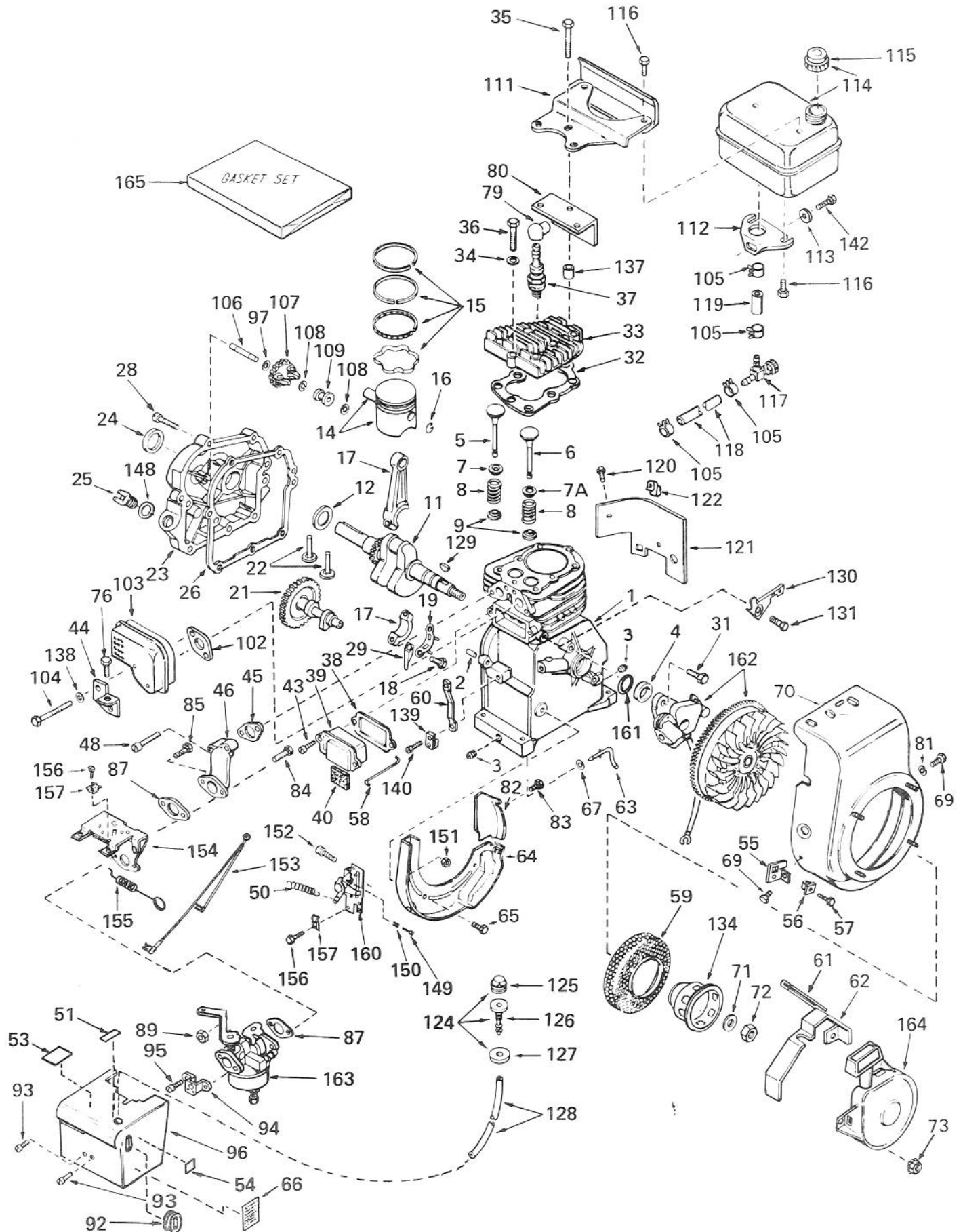
HANDLE ASSEMBLY (Continued)

Ref. No.	Part No.	Description	No. Used
40	321-9	Hex Hd. Capscrew	2
41	25-3990	Decal—Chute Direction Control	1
42	3290-320	Push - On Speed Nut	1
43	20-2060	Chute Control Grip	1
44	3256-24	Flat Washer	3
45	17-5750	Rod Chute Control	1
46	256-249	Nyliner	1
47	32152-1	Locknut	3
48	6-3069	Chute Control Rod Mounting Bracket (Incl. Ref. 41 & 46)	1
49	17-5630	Spring Conical	1
50	25-5980	Wire Harness	1
51	322-7	Capscrew	1
52	3272-6	Cotter Pin	3
53	3256-25	Washer	2
54	20-1910	Pivot Rod	1
55	22-9720	Decal Escutcheon (Model 31625)	1
*	22-9760	Decal Escutcheon (Model 31677)	1
56	20-1920	Lever	1

Ref. No.	Part No.	Description	No. Used
57	3290-213	Spring Washer	1
58	11-8140	Shoulder Screw	1
59	237-89	Rubber Grommet	1
60	20-1980	Control Rod	2
61	20-2020	Shift Lever	1
62	20-2010	Shift Bracket	1
63	20-1970	Control Rod Traction	1
64	3234-1	Hex Flange Screw	4
65	3290-238	Washer Pyramidal	1
66	3230-1	Carriage Bolt	1
67	11-7110	Bracket Worm	1
68	3290-212	Spring Washer	1
69	8-8600	Worm Gear	1
70	32121-50	Roll Pin	1
71	3220-3	Jam Nut	3
72	5-0865	Clevis	3
73	3290-398	Retainer Nut	4
74	25-6030	Handle Right	1
75	3272-5	Cotter Pin	3
76	283-1	Clevis Pin	3
77	25-9760	Strap Escutcheon Support	1
78	28-5660	Spacer Shift Lever	1
79	28-5670	Spacer Auger Lever	1

* Not Illustrated

ENGINE, TECUMSEH MODEL NO. HS50-67074B (5 H.P. SNOWTHROWER MODEL NO. 31625)



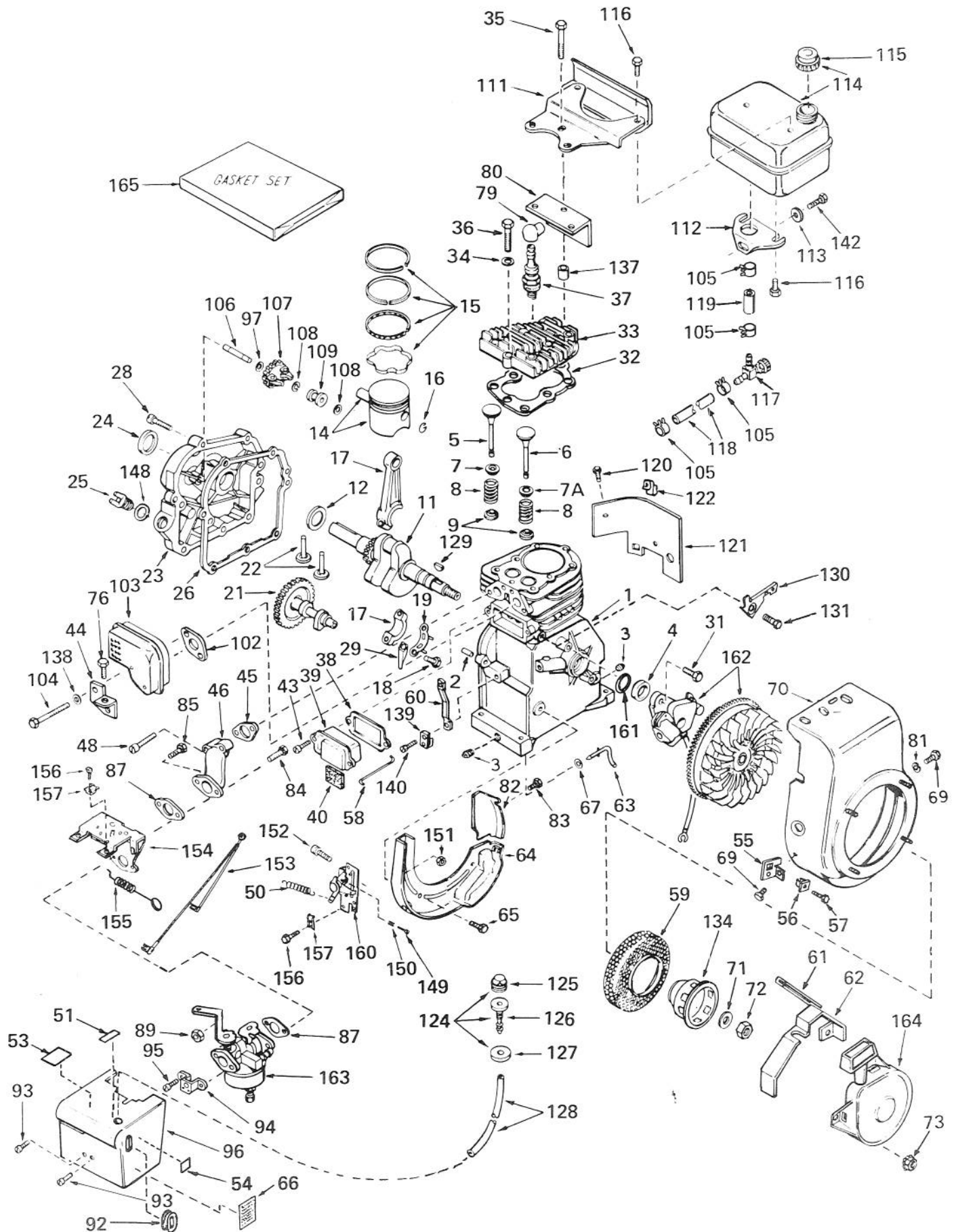
ENGINE, TECUMSEH MODEL NO. HS50-67074B (5 H.P. SNOWTHROWER MODEL NO. 31625)

Ref. No.	Part No.	Description	No. Used	Ref. No.	Part No.	Description	No. Used
1	33674	Cylinder Assy. (Incl. Nos. 2, 3 & 4)	1	38	*31619	Gasket, Valve spring cover	1
2	26727	Pin, Dowel	2	39	31337	Breather Assy. (Incl. Nos. 38 & 40)	1
3	27642	Plug, Sq. Hd. (Oil drain)	2	40	31410	Element, Breather	1
4	32600	Seal, Oil	1	43	650128	Screw, Fil. slotted hd. Sems	2
5	32644	Valve, Intake (Std.) (Incl. Nos. 7, 8 & 9)	1	44	33333	Bracket, Carburetor cover	1
5	32645	Valve, Intake (1/32" oversize) (Incl. Nos. 7, 8 & 9)	1	45	*33673	Gasket, Intake	1
6	29313B	Valve, Exhaust (Std.) (Incl. Nos. 7A, 8 & 9)	1	46	33691	Pipe, Intake	1
6	29315B	Valve, Exhaust (1/32" oversize) (Incl. Nos. 7A, 8 & 9)	1	48	650664	Screw, Phil. fil. hd. mach. Sems	2
7	31671	Cap, Upper valve spring (Intake)	1	50	31426	Spring, Extension	1
7A	33678	Cap, Upper valve spring (Exhaust)	1	51	34144	Decal, Primer	1
8	31672	Spring, Valve	2	53	34129	Decal, Warning	1
9	31673	Cap, Lower valve spring	2	54	34130	Decal, "Choke"	1
11	33675	Crankshaft Assy.	1	55	34126	Bracket, Grommet mounting	1
12	32323	Washer, Thrust	1	56	28545	Grommet, Plastic	1
14	33562	Piston & Pin Assy. (Incl. 2 of No. 16) (Std.)	1	57	650643	Screw, Phil. pan hd. thread forming	1
14	33563	Piston & Pin Assy. (Incl. 2 of No. 16) (.010 oversize)	1	58	32698	Link, Governor-to-throttle	1
14	33564	Piston & Pin Assy. (Incl. 2 of No. 16) (.020 oversize)	1	59	33668	Screen, Starter cup	1
15	33567	Ring Set, Piston (Std.)	1	60	32871	Lever, Governor	1
15	33568	Ring Set, Piston (.010 oversize)	1	61	32576	Seal, Snow guard	1
15	33569	Ring Set, Piston (.020 oversize)	1	62	34127	Guard, Starter	1
16	20381	Ring, Piston pin retaining	2	63	31334	Rod, Governor	1
17	33661	Rod Assy., Connecting (Incl. Nos. 18, 19 & 29)	1	64	+33342	Baffle, Blower housing	1
18	32610	Screw, Connecting rod	2	65	650561	Screw, Phil. hex hd. Sems	2
19	32609	Plate, Lock	1	66	31681	Decal, Name & Instruction	1
21	33158	Camshaft (Compression Release)	1	67	28277	Washer, Flat	1
22	27241	Lifter, Valve	2	69	29212	Screw, Hex slotted hd. Sems	2
23	32700A	Cover, Cylinder (Incl. Nos. 24, 25, 106 & 148)	1	70	33663A	Housing, Blower	1
24	27897	Seal, Oil	1	71	650763	Washer, Belleville	1
25	27625	Plug, Oil filler (Incl. No. 148)	1	72	650607	Nut, Flywheel	1
26	*27677	Gasket, Cylinder cover	1	73	29752	Nut & Lockwasher	4
28	30564	Screw, Hex. hd. cap sems	7	76	650735	Screw, Hex hd. Sems	1
29	32654	Dipper, Oil	1	79	610118	Cover, Spark plug	1
31	650489	Screw, Hex hd. sems w/flatwasher	2	80	33344	Baffle, Heat	1
32	*33554	Gasket, Cylinder head	1	81	650168	Washer, Flat	1
33	33016	Head, Cylinder	1	82	33341	Extension, Baffle	1
34	26073	Washer, Flat	8	83	650701	Screw, Phil. hex washer hd. self-drilling	1
35	650694	Screw, Hex hd. cap	5	84	6202	Screw, Hex hd. cap	1
36	6021	Screw, Hex hd. cap	3	85	650601	Screw, Phil. fil. hd.	1
37		Plug, Spark (Champion RCJ8 or Autolite AR7N Resistor type)	1	87	*26756	Gasket, Carburetor	2
				89	29752	Nut & Lockwasher	2
				92	34213	Grommet, Carburetor cover	1
				93	650257	Screw, Phil. pan hd. Sems	2
				94	32398	Bracket, Carburetor cover	1
				95	28820	Screw, Phil. fil. hd. mach. Sems	2
				96	34134	Cover, Carburetor	1
				97	30590A	Washer, Flat	1
				102	*33670	Gasket, Muffler	1
				103	33697	Muffler	1

†In original production the speed control assembly is riveted to the blower housing baffle. Replacement speed control assembly includes screws and nuts for mounting. Replacement baffle has threaded holes.

ENGINE, TECUMSEH MODEL NO. HS50-67074B (Continued)

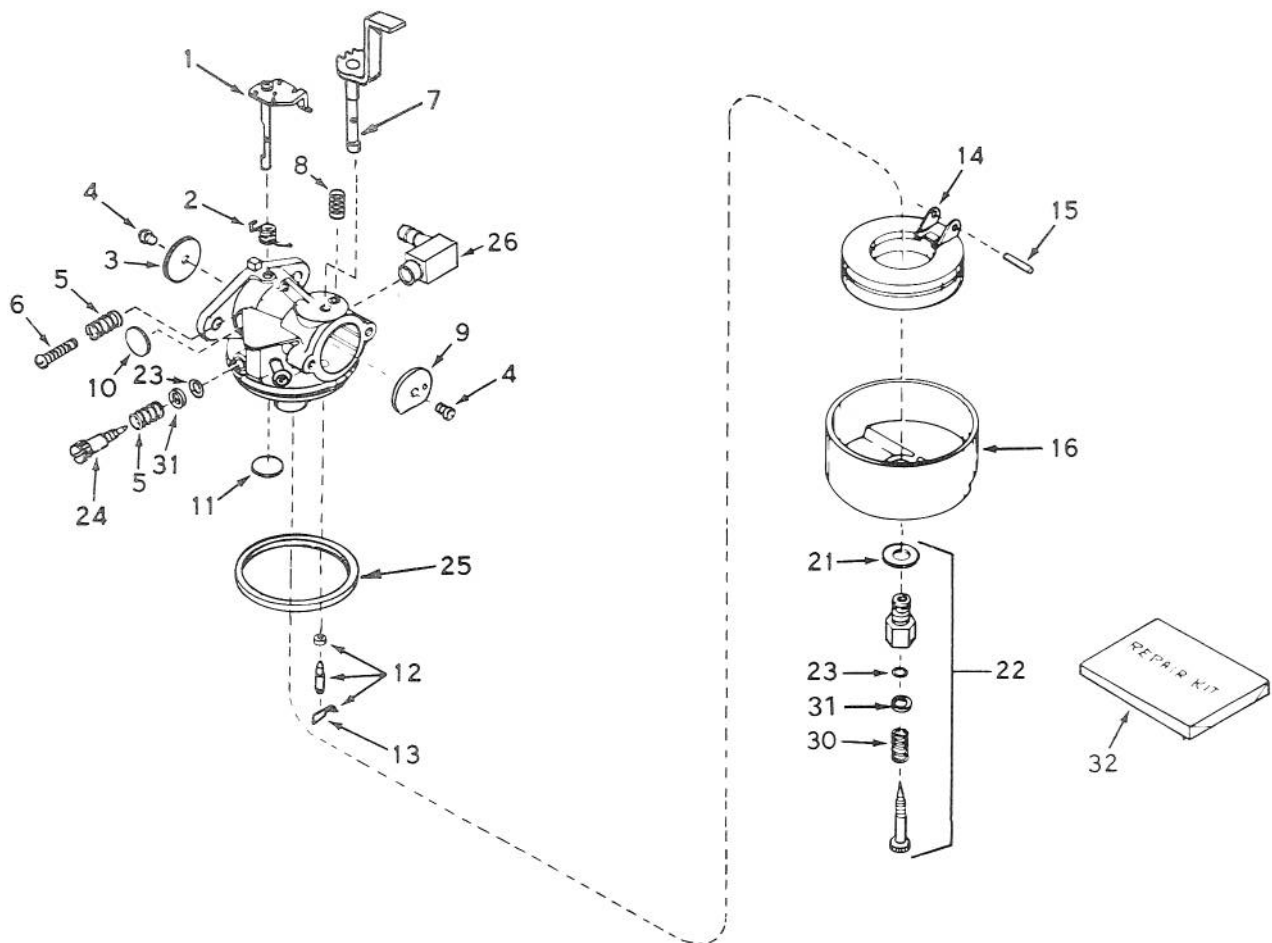
(5 H.P. SNOWTHROWER MODEL NO. 31625)



ENGINE, TECUMSEH MODEL NO. HS50-67074 B (Continued)
(5 H.P. SNOWTHROWER MODEL NO. 31625)

Ref. No.	Part No.	Description	No. Used	Ref. No.	Part No.	Description	No. Used
104	650327	Screw, Fil. slotted hd. Sems	2	137	28212	Spacer	2
105	26460	Clamp, Fuel line	4	138	16644	Washer	2
106	30574	Shaft, Mechanical governor	1	139	31335	Clamp, Governor lever	1
107	30591	Gear Assy., Governor (Incl. No. 97)	1	140	650548	Screw, Hex slotted washer hd.	1
108	29193	Ring, Retaining	2	142	650738	Screw, Phil. hex spinlock hd., thread forming	1
109	30588A	Spool, Governor	1	148	*29673	Gasket, Oil filler	2
111	28371B	Bracket, Fuel tank—Upper	1	149	650549	Screw, Fil. slotted hd. mach.	1
112	32762	Bracket, Fuel tank—Lower	1	150	31342	Spring, Compression	1
113	650675	Washer, Flat	1	151	†30322	Nut & Lockwasher	2
114	33120	Tank Assy., Fuel (Incl. Nos. 115 & 116)	1	152	†650139	Screw, Fil. slotted hd. Sems	2
115	34210	Cap, Fuel tank	1	153	34124	Wire, Ground	1
116	650665	Screw, Hex hd. Sems	4	154	34123	Bracket, Speed control	1
117	32961	Valve, Fuel shut-off	1	155	34125	Control, Choke	1
118	30705	Line, Fuel	1	156	28942	Screw, Hex hd. slotted Sems	2
119	29774	Line, Fuel	1	157	27793	Clip, Conduit	2
120	650128	Screw, Fil. slotted hd. Sems	1	160	†33879	Bracket Assy., Control (Incl. Nos. 149, 150, 151 & 152)	1
121	29745	Extension, Blower housing	1	161	33876	Gasket, Stator	1
122	27275	Clip, Hi-tension	1	162	610944A	Magneto (The complete magneto is not available as an assembly. The magneto number is shown for reference purposes only. Order component parts individ- ually, as shown in parts list.)	1
124	32182	Primer Assy. (Incl. Nos. 125, 126 & 127)	1	163	631916	Carburetor (Incl. 1 of No.87)	1
125	32183	Bulb, Primer	1	164	590473	Starter Assy., Rewind	1
126	32184	Body, Primer	1	165	33683	Gasket Set (Incl. items marked *)	1
127	32312	Retainer, Primer bulb	1				
128	32180A	Line, Primer	1				
129	610951	Key, Flywheel	1				
130	34212	Bracket, Hold down	1				
131	650768	Screw, Hex hd. thread forming w/conical washer	1				
134	33667	Cup, Starter	1				

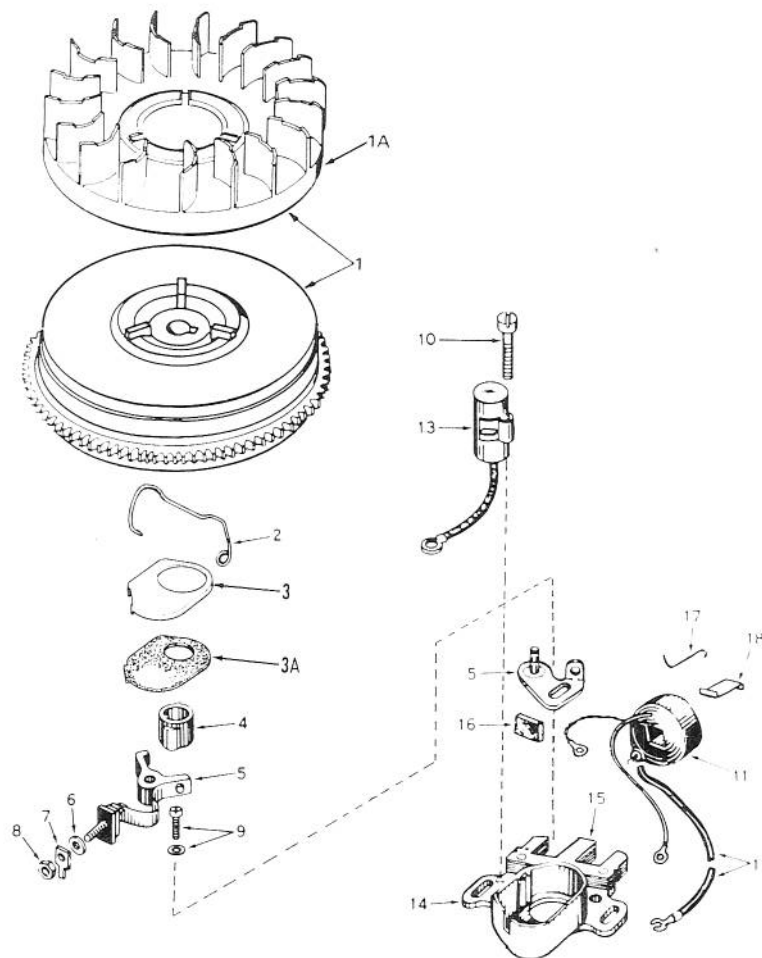
†In original production the speed control assembly is riveted to the blower housing baffle. Replacement speed control assembly includes screws and nuts for mounting. Replacement baffle has threaded holes.



CARBURETOR NO. 631916 **(5 H.P. SNOWTHROWER MODEL NO. 31625)**

Ref. No.	Part No.	Description	No. Used
1	631615	Shaft & Lever Assy., Throttle	1
2	631279	Spring, Throttle Return	1
3	631036	Shutter, Throttle	1
4	650506	Screw	2
5	630766	Spring, Idle Regulating Screw	2
6	650417	Screw, Idle Regulating	1
7	631908	Shaft & Lever Assy., Choke	1
8	630735	Spring, Choke Stop	1
9	631815	Shutter, Choke	1
10	*630748	Plug, Welch	1
11	*631027	Plug, Welch	1
12	*631021	Inlet Needle, Seat & Clip Assy. (Incl. No. 13)	1
13	631022	Clip, Inlet Needle	1
14	631023	Float, Carburetor	1
15	*631024	Shaft, Float	1

Ref. No.	Part No.	Description	No. Used
14	631023	Float, Carburetor	1
15	*631024	Shaft, Float	1
16	631867	Bowl, Float	1
21	27110	Gasket, Bowl-to-Body	1
22	*31839	Adjustment Screw Assy., Main (Incl. Nos. 21, 23, 30 & 31)	1
23	*630740	"O" Ring, Adjustment Screw	2
24	*631078	Screw, Idle Adjustment	1
25	*631028	Gasket, Bowl-to-Body	1
26	631807	Fitting, Fuel Inlet	1
30	630738	Spring, Main Adjustment Screw	1
31	630739	Washer, Flat	2
32	31840	Repair Kit (Incl. Items Marked *)	1

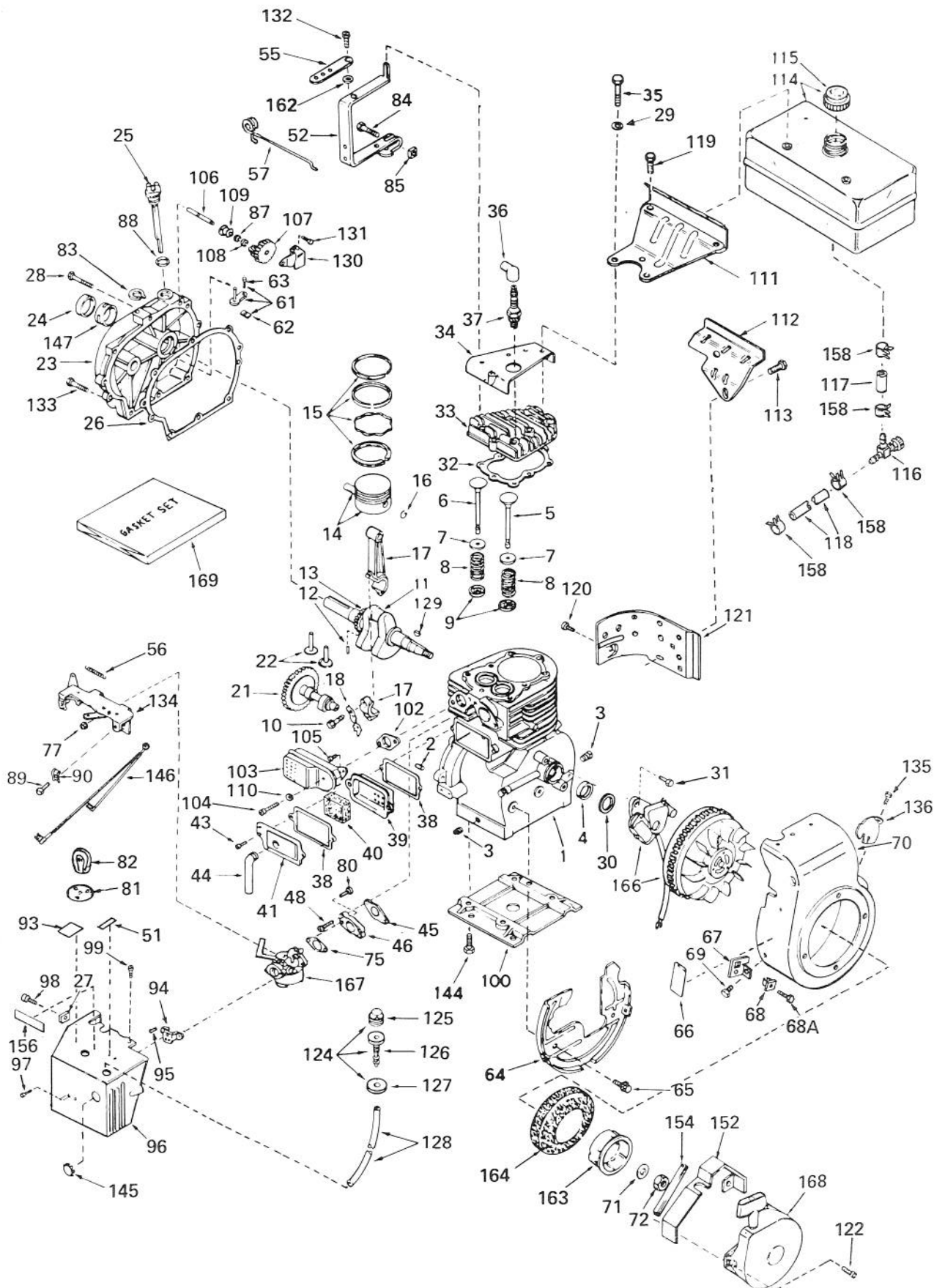


MAGNETO NO. 610944A **(5 H.P. SNOWTHROWER MODEL NO. 31625)**

Ref. No.	Part No.	Description	No. Used
1	33701B	Flywheel (Incl. Nos. 1A, 3 & 3A)	1
1A	610933	Fan	1
2	30551	Spring, Breaker box dust cover	1
3	610947	Cover, Dust	1
3A	610950	Gasket, Dust cover	1
4	30992	Cam, Breaker	1
5	30547A	Contact Assy., Breaker	1
6	610385	Washer, Terminal	1
7	33356	Tab, Ground terminal	1
8	610408	Nut, Terminal	1
9	29181	Screw & Washer, Breaker	1
10	610593	Screw, Condenser	1
11	30560A	Coil Assy. (Incl. No. 12)	1

Ref. No.	Part No.	Description	No. Used
12	30554	Wire, Lead	1
13	30548A	Condenser	1
14	30545	Core & Plate	1
15	30561B	Stator Assy. (Incl. Nos. 2, 3, 3A, 5 thru 14 & 16 thru 18)	1
16	30549	Felt, Cam wiper	1
17	31311	Clip, Coil locking	1
18	29629	Spring, Coil wedge	1
<p>*The complete magneto is not available as an assembly. The magneto number is shown for reference purposes only. Order component parts individually, as shown in parts list.</p>			

ENGINE, TECUMSEH MODEL NO. H70-130176D (7 H.P. SNOWTHROWER MODEL NO. 31677)



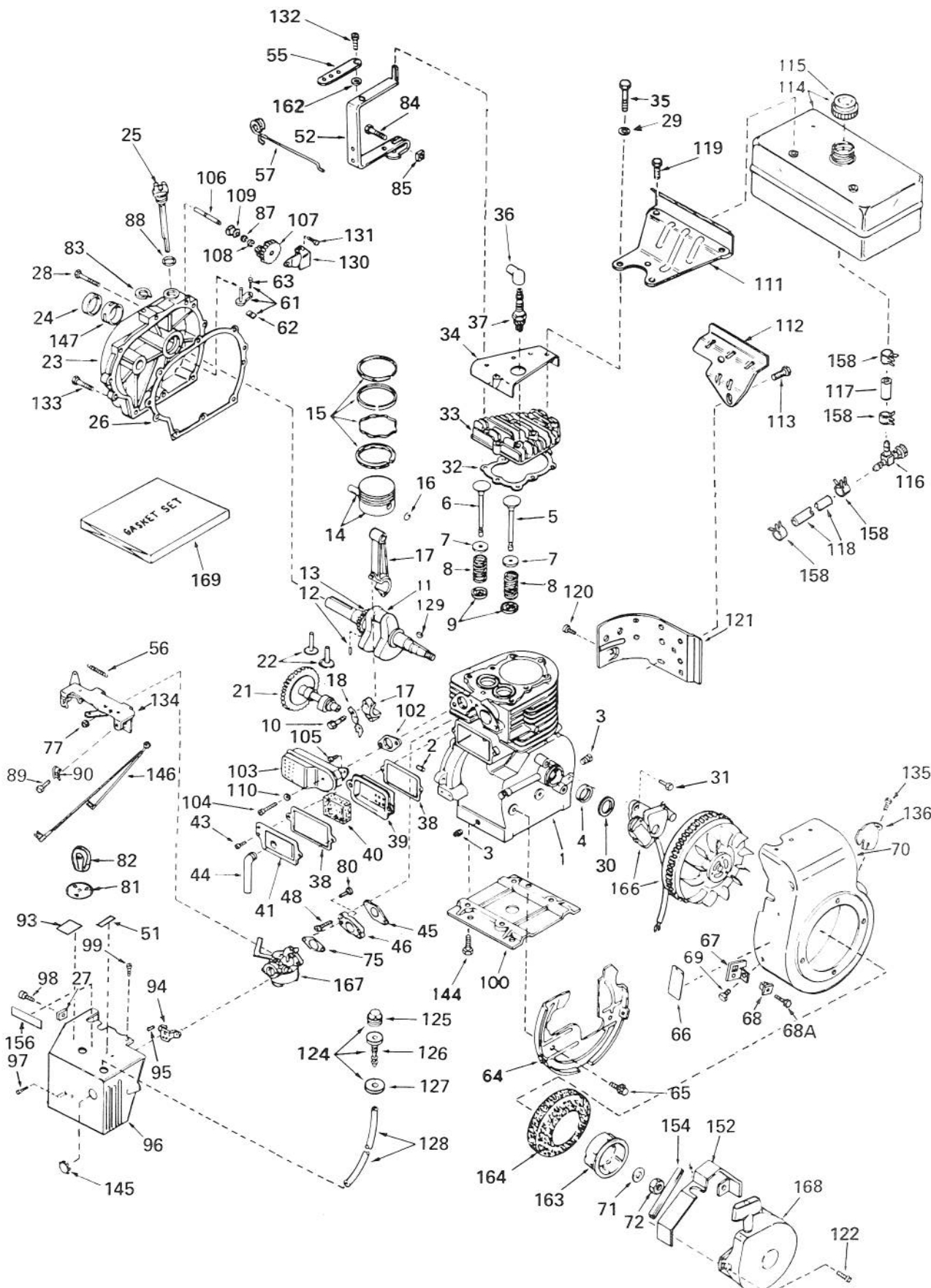
ENGINE, TECUMSEH MODEL NO. H70-130176D

(7 H.P. SNOWTHROWER MODEL NO. 31677)

Ref. No.	Part No.	Description	No. Used
1	32586B	Cylinder Assy. (Incl. Nos. 2, 3 & 4)	1
2	27652	Pin, Dowel	2
3	27642	Plug, Sq. hd. pipe, (Oil drain)	2
4	32630	Seal, Oil	1
5	32783	Valve, Intake (Std.) (Incl. No. 9)	1
5	32784	Valve, Intake (1/32" oversize) (Incl. No. 9)	1
6	27878A	Valve, Exhaust (Std.) (Incl. No. 9)	1
6	27880A	Valve, Exhaust (1/32" oversize) (Incl. No. 9)	1
7	27882	Cap, Upper valve spring	2
8	27881	Spring, Valve	2
9	32581	Cap, Lower valve spring	2
10	650662	Bolt, Connecting rod	2
11	32587	Crankshaft Assy. (Incl. Nos. 12 & 13)	1
12	29783	Pin, Crankshaft gear	1
13	27884	Gear, Crankshaft	1
14	32592	Piston & Pin Assy. (Incl. 2 of No. 16) (Std.)	1
14	32593	Piston & Pin Assy. (Incl. 2 of No. 16) (.010 oversize)	1
14	32594	Piston & Pin Assy. (Incl. 2 of No. 16) (.020 oversize)	1
15	32595	Ring Set, Piston (Std.)	1
15	32596	Ring Set, Piston (.010 oversize)	1
15	32597	Ring Set, Piston (.020 oversize)	1
16	27888	Ring, Piston pin retaining	2
17	32591C	Rod Assy., Connecting (Incl. Nos. 10 & 18)	1
18	32590	Plate, Lock & Oil dipper	1
21	32115	Camshaft (Mech. Compression Release)	1
22	34034	Lifter, Valve	2
23	31303B	Cover, Cylinder (Incl. Nos. 24, 106 & 147)	1
24	28427	Seal, Oil	1
25	31297	Dipstick, Oil (Incl. No. 88)	1
26	*30684	Gasket, Cylinder cover	1
27	650764	Nut, "U" Type	1
28	650488	Screw, Hex hd. Sems	7
29	650691	Washer, Flat	1
30	33876	Gasket, Stator	1
31	650489	Screw, Hex hd. Sems	2
32	*32631	Gasket, Cylinder head	1
33	30938A	Head, Cylinder	1
34	30939A	Cover, Cylinder head	1
35	650697	Screw, Hex hd. cap	8
36	610118	Cover, Spark plug	1
37		Plug, Spark (Champion RCJ8 or Autolite AR7N Resistor type)	1

Ref. No.	Part No.	Description	No. Used
38	*27896	Gasket, Valve spring cover	2
39	28423	Body Assy., Breather	1
40	28424	Element, Breather	1
41	28425	Cover, Valve spring	1
43	650128	Screw, fil. slotted hd. Sems	2
44	27627	Tube, Breather	1
45	*27915	Gasket, Intake	1
46	30195A	Flange, Carburetor (Incl. Nos. 77 & 80)	1
48	30196	Screw, Fil. hd. mach. PCR	2
51	34144	Decal, Primer	1
52	32326A	Lever, Governor	1
55	30205	Bracket, Governor adjusting	1
56	30826	Spring, Extension	1
57	30824	Link, Governor-to-throttle	1
61	30699C	Rod Assy., Governor (Incl. Nos. 62 & 63)	1
62	30700	Yoke, Governor	1
63	650494	Screw, Phil. fil. hd. Sems	1
64	29536	Baffle, Blower housing	1
65	650561	Screw, Phil. hex hd. Sems	2
66	31681	Decal, Name & Instruction	1
67	34126	Bracket, Grommet mounting	1
68	28545	Grommet, Plastic	1
68A	650643	Screw, Phil. pan hd. thread forming	1
69	29747A	Screw, Hex hd. cap Sems	2
70	32158C	Housing, Blower (Incl. Nos. 135 & 136)	1
71	650490	Washer, Belleville	1
72	8116	Nut, Crankshaft	1
75	*31688	Gasket, Carburetor	1
77	29752	Nut & Lockwasher	2
80	650572	Screw, Phil. flat hd. Sems	2
81	34132	Plate, Choke indicator	1
82	32410	Knob, Speed Control	1
83	29642	Ring, Retaining	1
84	29826	Screw, Hex slotted washer hd. mach.	1
85	29216	Nut, Square	1
87	30590A	Washer, Flat	1
88	*29673	Gasket, Oil dipstick	1
89	28942	Screw, Hex slotted hd. Sems	1
90	27793	Clip, Conduit	1
93	34129	Decal, Warning	1
94	32398	Bracket, Carburetor cover	1
95	28820	Screw, Phil. fil. hd. mach. Sems	2
96	34135	Cover, Carburetor	1
97	650257	Screw, Phil. pan hd. Sems	2
98	650760	Screw, Phil. pan hd.	1
99	650765	Screw, Hex washer hd. self-tap	1
100	29538	Base, Engine mounting	1
102	*27930	Gasket, Muffler	1
103	32401	Muffler	1

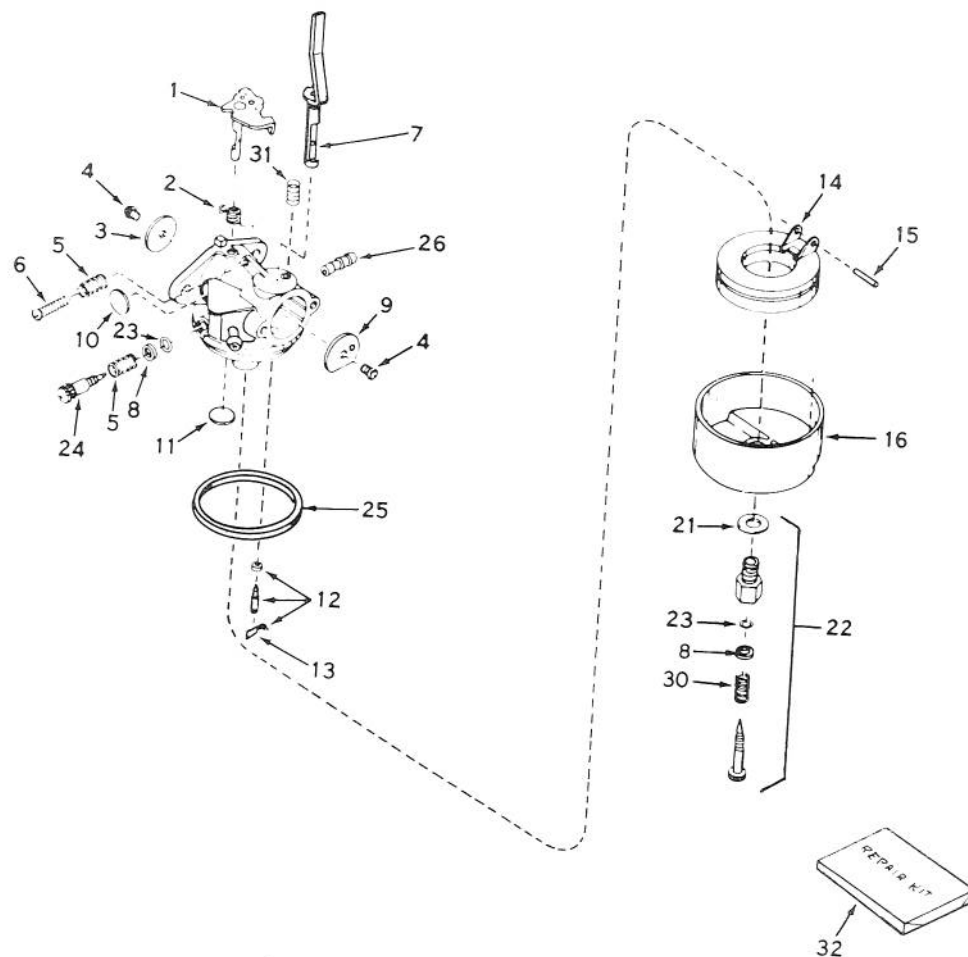
(7 H.P. SNOWTHROWER MODEL NO. 31677)



ENGINE, TECUMSEH MODEL NO. H70-130176D (Continued)
(7 H.P. SNOWTHROWER MODEL NO 31677)

Ref. No.	Part No.	Description	No. Used
104	650694	Screw, Hex hd. cap	1
105	30196	Screw, Fil. hd. mach. PCR	1
106	31845	Shaft, Mechanical governor	1
107	30591	Gear Assy., Governor (Incl. No. 87)	1
108	29193	Ring, Retaining	1
109	30588A	Spool, Governor	1
110	26073	Washer	1
111	34159	Plate, Fuel tank mounting	1
112	34158	Bracket, Fuel tank mounting	1
113	650561	Screw, Phil. hex hd. Sems	1
114	34156	Tank Assy., Fuel (Incl. No. 115)	1
115	34210	Cap, Fuel tank	1
116	32961	Valve, Shut-off	1
117	29774	Line, Fuel	1
118	30705	Line, Fuel	1
119	650665	Screw, Hex hd. Sems	2
120	650128	Screw, Fil. slotted hd. Sems	1
121	30622	Extension, Blower housing	1
122	29716	Screw, Phil. pan hd. Sems	4
124	32182	Primer Assy. (Incl. Nos. 125, 126 & 127)	1
125	32183	Bulb, Primer	1
126	32184	Body, Primer	1
127	32312	Retainer, Primer bulb	1
128	32180A	Line, Primer	1
129	32589	Key, Flywheel	1
130	31843A	Bracket, Governor gear	1
131	28763	Screw, Hex washer hd. thread forming	2

Ref. No.	Part No.	Description	No. Used
132	650548	Screw, Hex slotted washer hd.	1
133	650493	Screw, Hex hd. Sems	1
134	33108	Control Assy., Remote speed (Incl. No. 56)	1
135	650736	Screw, Phil. pan hd.	1
136	33013	Cover, Starter bubble	1
144	650542	Screw, Hex hd. cap	4
145	31291	Plug, Cover	1
146	34131	Wire, Ground	1
147	31546	Bushing, Crankshaft	1
152	34127	Guard, Starter	1
154	32576	Seal, Snow guard	1
156	34133	Decal, Choke	1
158	26460	Clamp, Fuel line	4
162	29918	Lockwasher, No. 8 E.T.	1
163	32125	Cup, Starter	1
164	590417	Screen, Starter cup	1
166	610694A	Magneto (The complete magneto is not available as an assembly. The magneto number is shown for reference purposes only. Order component parts individually, as shown in parts list.)	1
167	631920	Carburetor (Incl. No. 75)	1
168	590473	Starter Assy., Rewind	1
169	33239	Gasket Set (Incl. items marked *)	1

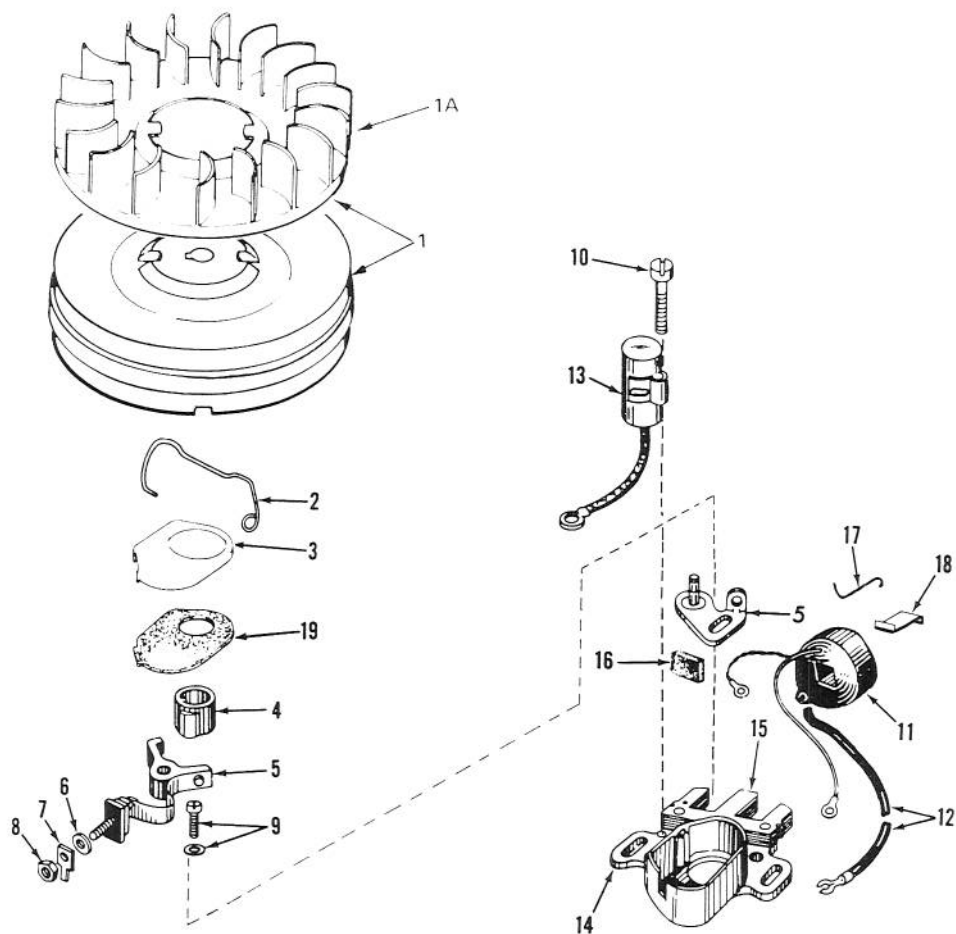


CARBURETOR NO. 631920 **(7 H.P. SNOWTHROWER MODEL NO. 31677)**

Ref. No.	Part No.	Description	No. Used
1	31834	Shaft & Lever Assy., Throttle	1
2	630731	Spring, Throttle Return	1
3	631036	Shutter, Throttle	1
4	650506	Screw	2
5	630766	Spring, Idle Regulating Screw	2
6	650417	Screw, Idle Regulating	1
7	631913	Shaft & Lever Assy., Choke	1
8	630739	Washer, Flat	2
9	631815	Shutter, Choke	1
10	*630748	Plug, Welch	1
11	*631027	Plug, Welch	1
12	*631021	Inlet Needle, Seat & Clip Assy. (Incl. No. 13)	1
13	631022	Clip, Inlet Needle	1

Ref. No.	Part No.	Description	No. Used
14	631023	Float, Carburetor	1
15	*631024	Shaft, Float	1
16	631867	Bowl, Float	1
21	27110	Gasket, Bowl-to-Body	1
22	*31839	Adjustment Screw Assy., Main (Incl. Nos. 8, 21, 23 & 30)	1
23	*630740	"O" Ring, Adjustment Screw	2
24	*631078	Screw, Idle Adjustment	1
25	*631028	Gasket, Bowl-to-Body	1
26	631803	Fitting, Fuel Inlet	1
30	630738	Spring, Main Adjustment Screw	1
31	630735	Spring, Choke Stop	1
32	31840	Repair Kit (Incl. Items Marked *)	1

* Not Illustrated

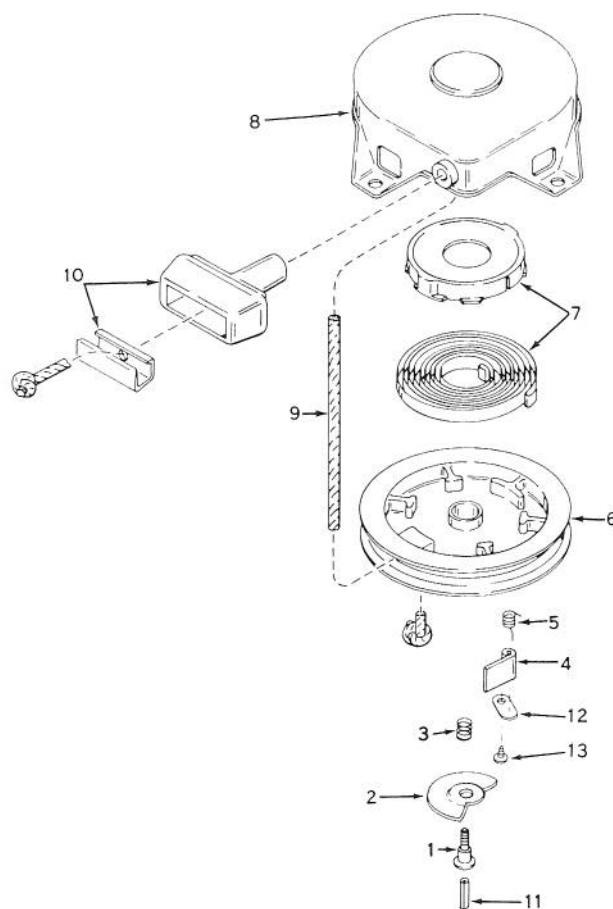


MAGNETO NO. 610694A

(7 H.P. SNOWTHROWER MODEL NO. 31677)

Ref. No.	Part No.	Description	No. Used
1	30811A	Flywheel (Incl. No. 1A)	1
1A	610934	Fan	1
2	30551	Spring, Breaker box	1
3	610947	Cover, Breaker box dust	1
4	30992	Cam, Breaker	1
5	30547A	Contact Assy., Breaker	1
6	610385	Washer, Terminal	1
7	33356	Tab, Ground terminal	1
8	610408	Nut, Terminal	1
9	29181	Screw & Washer, Breaker	1
10	610593	Screw, Condenser fastening	1
11	30560A	Coil Assy. (Incl. No. 12)	1
12	30554	Wire, Lead	1
13	30548A	Condenser	1

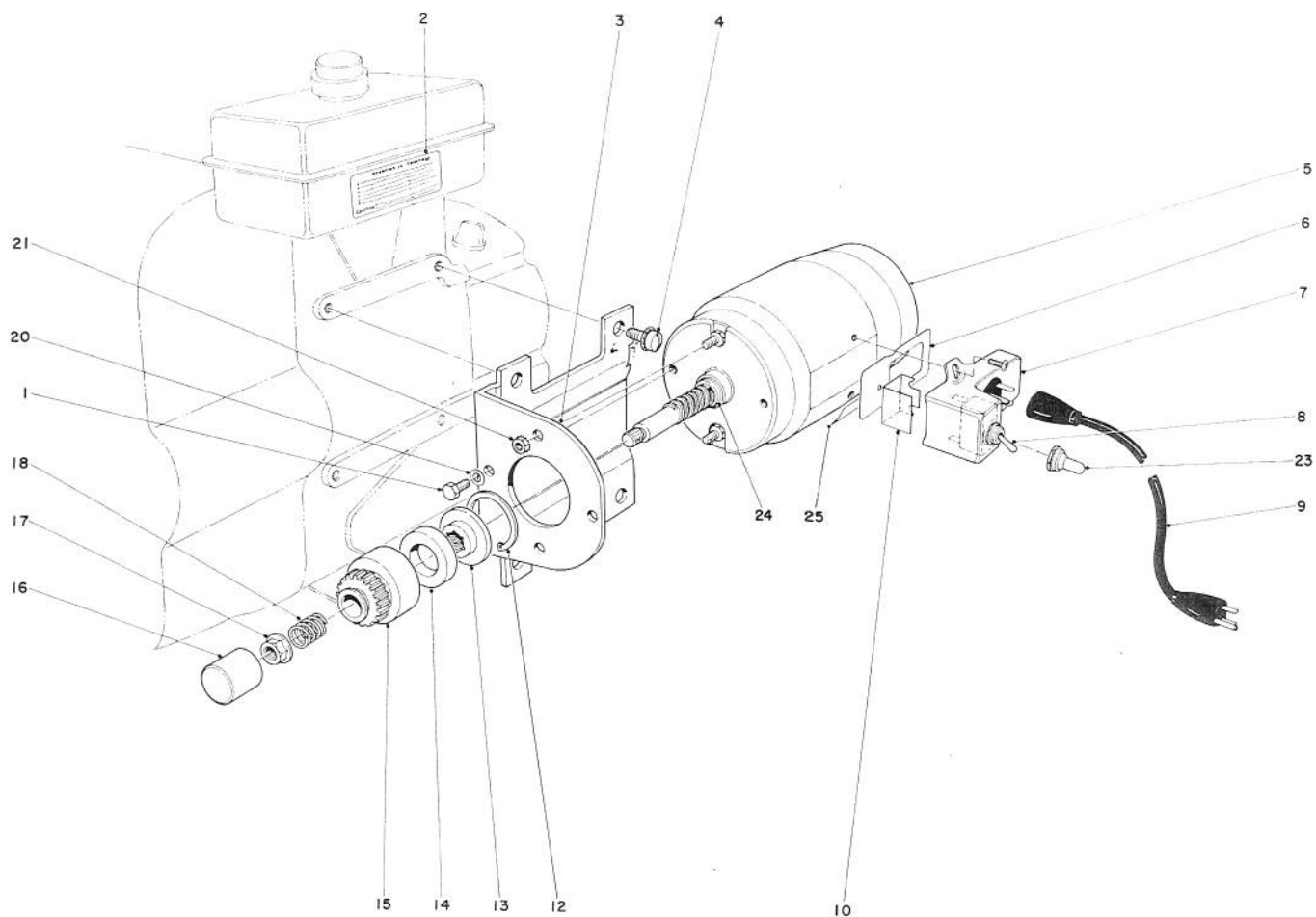
Ref. No.	Part No.	Description	No. Used
14	30545	Core & Plate	1
15	30561B	Stator Assy. (Incl. Nos. 2, 3, 5 thru 14 & 16 thru 19)	1
16	30549	Felt, Cam wiper	1
17	31311	Clip, Coil locking	1
18	29629	Spring, Coil wedge	1
19	610955	Gasket, Dust cover	1
19	610956	Gasket, Dust cover	1
*The complete magneto is not available as an assembly. The magneto number is shown for reference purposes only. Order component parts individually, as shown in parts list.			



REWIND STARTER NO. 590473
(5 AND 7 H.P. SNOWTHROWER MODEL NOS. 31625 AND 31677)

Ref. No.	Part No.	Description	No. Used
1	590409	Screw	1
2	590474	Cam, Dog	1
3	590411	Spring, Brake	1
4	590148	Dog, Starter	1
5	590475	Spring, Dog	1
6	590478	Pulley	1
7	590414	Spring & Keeper Assembly	1

Ref. No.	Part No.	Description	No. Used
8	590415	Housing Assembly, Starter	1
9	590386	Rope, Starter	1
10	590387	Handle Assembly, Starter	1
11	590459	Pin, Centering	1
12	590476	Retainer, Dog	1
13	590477	Screw	1

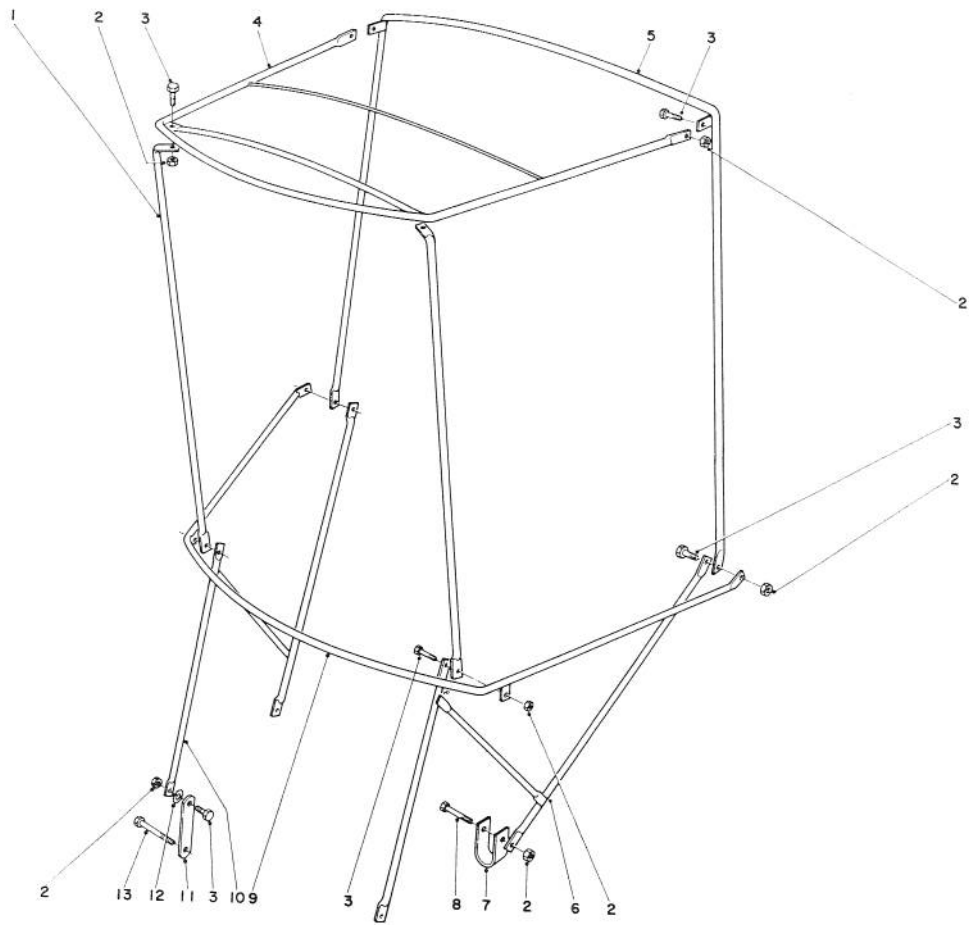


STARTER MOTOR KIT-MODEL 23-4410 (FOR SNOWTHROWERS MODEL NO. 31677)

Ref. No.	Part No.	Description	No. Used
1	3290-237	Machine Screw	2
2	21-5140	Instruction Decal	1
3	23-4610	Mounting Bracket	1
4	32140-27	Machine Screw	4
5	23-5200	Starter Motor	1
6	23-7680	Gasket	1
7	25-9970	Switch & Plug Housing	1
8	6-1659	Switch (Incl. Ref. #23)	1
9	20-7050	Cord 10 Ft.	1
10	20-7170	Switch Insulator	1
12	32151-42	Retaining Ring	1
13	20-7140	Pinion Nut	1

Ref. No.	Part No.	Description	No. Used
14	5-4724	Rubber Ring	1
15	20-7130	Pinion 16T	1
16	20-7960	Weather Cap	1
17	32128-16	Flanged Locknut	1
18	20-7120	Spring	1
20	3254-1	Int. Tooth Lockwasher	2
21	32149-8	Keps Nut	2
23	218-473	Switch Boot	1
24	23-9590	Spacer	1
25	23-8630	Decal	1
*	23-4410	Starter Motor Complete	1
*	20-7110	Pinion Assembly (Incl. Ref. Nos. 12 thru 15)	1

* Not Illustrated

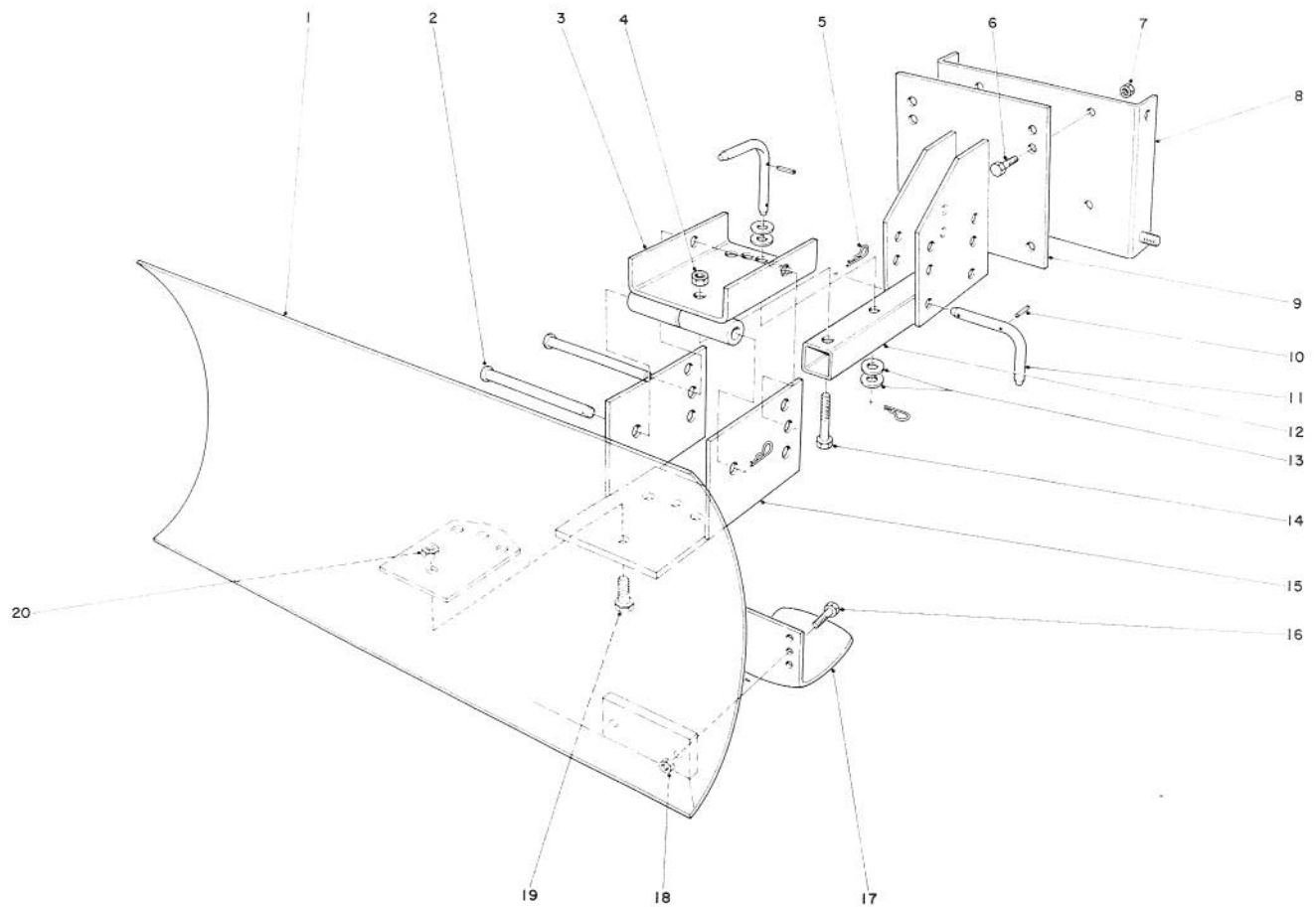


SNOW CAB ASSEMBLY MODEL 12-8100

Ref. No.	Part No.	Description	No. Used
1	12-8040	Front Corner Post	2
2	32146-17	Locknut	12
3	321-4	Capscrew	10
4	12-8010	Top Frame	1
5	12-8030	Rear Vertical Bow	1
6	12-8070	Attaching Bracket, L.H.	1
7	12-8050	"U" Clamp	2

Ref. No.	Part No.	Description	No. Used
8	321-11	Capscrew	2
9	12-8020	Horizontal Curved Bow	1
10	12-8060	Attaching Bracket, R.H.	1
11	20-7260	Mounting Strap	2
12	3255-7	Ext. Tooth Lockwasher	2
13	321-15	Capscrew	2
*	12-8080	Vinyl Cover	1

* Not Illustrated



GRADER BLADE ASSEMBLY MODEL 59051

Ref. No.	Part No.	Description	No. Used
1	7-4374	Blade	1
2	283-38	Pin	2
3	20-5090	Swivel Bracket	1
4	32152-3	Locknut	1
5	3290-322	Hair Pin Cotter	5
6	323-6	Capscrew	4
7	32152-2	Locknut	4
8	22-4920	Mounting Plate Bracket (used with 726 and 832 only)	1
9	20-5170	Mounting Plate	1
10	32121-45	Roll Pin	3
11	20-5100	Pivot Pin	3

Ref. No.	Part No.	Description	No. Used
12	20-5140	Blade Tongue	1
13	3256-5	Flat Washer	4
14	325-11	Capscrew	1
15	20-5130	Blade Adjustment Plate	1
16	322-6	Capscrew	4
17	7-1023	Skid	2
18	32152-1	Locknut	4
19	325-5	Capscrew	4
20	32152-3	Locknut	4
*	20-9950	Air Cleaner Kit (Tecumseh)	1

* Not Illustrated