



Rear Remote Hydraulic Kit

Sand Pro®/Infield Pro® 3040 and 5040 Traction Unit

Model No. 08781—Serial No. 315000001 and Up

Addendum

This addendum is for Sand Pro Models 08703 and 08705.

You will not use the following parts to install this kit on Sand Pro models 08743 and 08745:

Description	Quantity
Dipstick	1
Valve plate	1
Thread-forming screw (5/16 x 3/4 inch)	2
Bolt (1/4 x 1-3/4 inches)	2

You will need to use longer bolts to install the valves. Order 2 bolts (1/4 x 3 inches — Part No. 321–23); refer to your authorized Toro distributor.

Setup

Loose Parts

Use the chart below to verify that all parts have been shipped.

Description	Qty.	Use
Valve	1	Install the manifold and bracket.
Bolt (1/4 x 3 inches)	2	
Nut (1/4 inch)	2	
Small 90-degree elbow	1	
Tee fitting	1	
Tee adapter	1	
Relay	1	
Cap	1	

This procedure replaces the existing “Installing the Valve” (Number 6) procedure in your kit *Installation Instructions* (Form No. 3416-266).

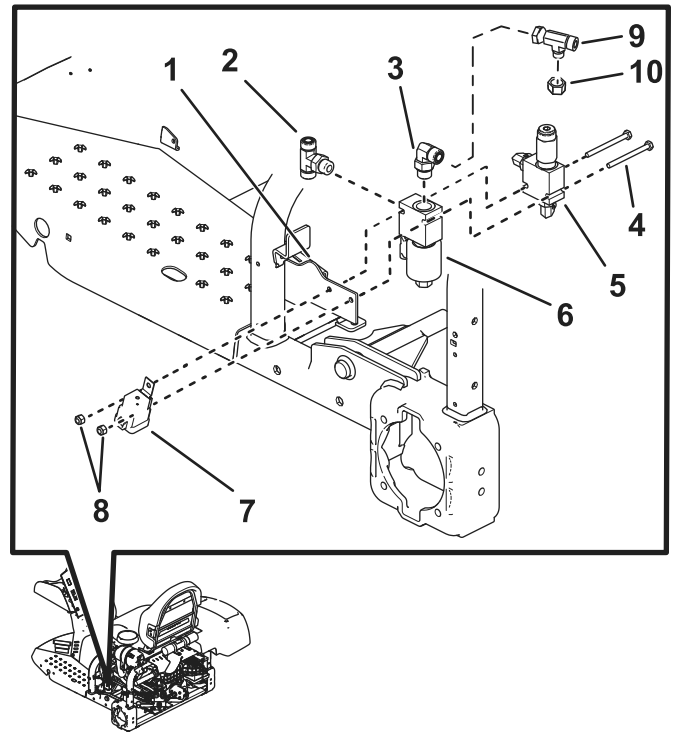


Installing the Valve

Note: Make sure that all O-rings are lubricated and properly positioned on all fittings before installation.

Note: Install all fittings and hydraulic lines loosely first and then tighten them when everything is installed. Install the fittings at the angles shown in the figures.

1. Park the machine on a level surface, engage the parking brake, shut off the engine, and remove the key.
2. Install the fittings at the angles shown in the figures. Install the tee fitting to the side of the valve. Refer to [Figure 1](#) for the correct tee fitting.
3. Install a small 90-degree elbow to the top of the valve ([Figure 1](#)).
4. Install the tee adapter to the 90-degree elbow. Refer to [Figure 1](#) for the correct tee adapter.
5. Remove the existing valve from the valve bracket ([Figure 1](#)).
6. Install the cap onto the tee adapter ([Figure 1](#)).
7. Install the relay to the valve bracket at the same time the valve is installed to the valve bracket.
8. Install the valves to the valve bracket with 2 bolts (1/4 x 3 inches) and 2 nuts (1/4 inch); refer to [Figure 1](#).

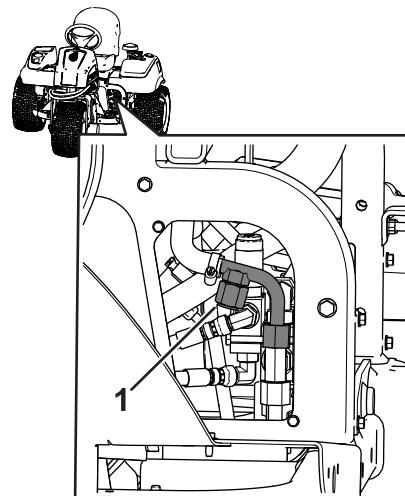


g364444

Figure 1

- | | |
|--------------------------|----------------|
| 1. Valve bracket | 6. New valve |
| 2. Tee fitting | 7. Relay |
| 3. Small 90-degree elbow | 8. Nut |
| 4. Bolt (1/4 x 3 inches) | 9. Tee adapter |
| 5. Existing valve | 10. Cap |

9. Ensure there is no interference with hydraulic hoses and hydraulic line 4 after the valves are installed ([Figure 2](#)).



g364423

Figure 2

1. Hydraulic line 4