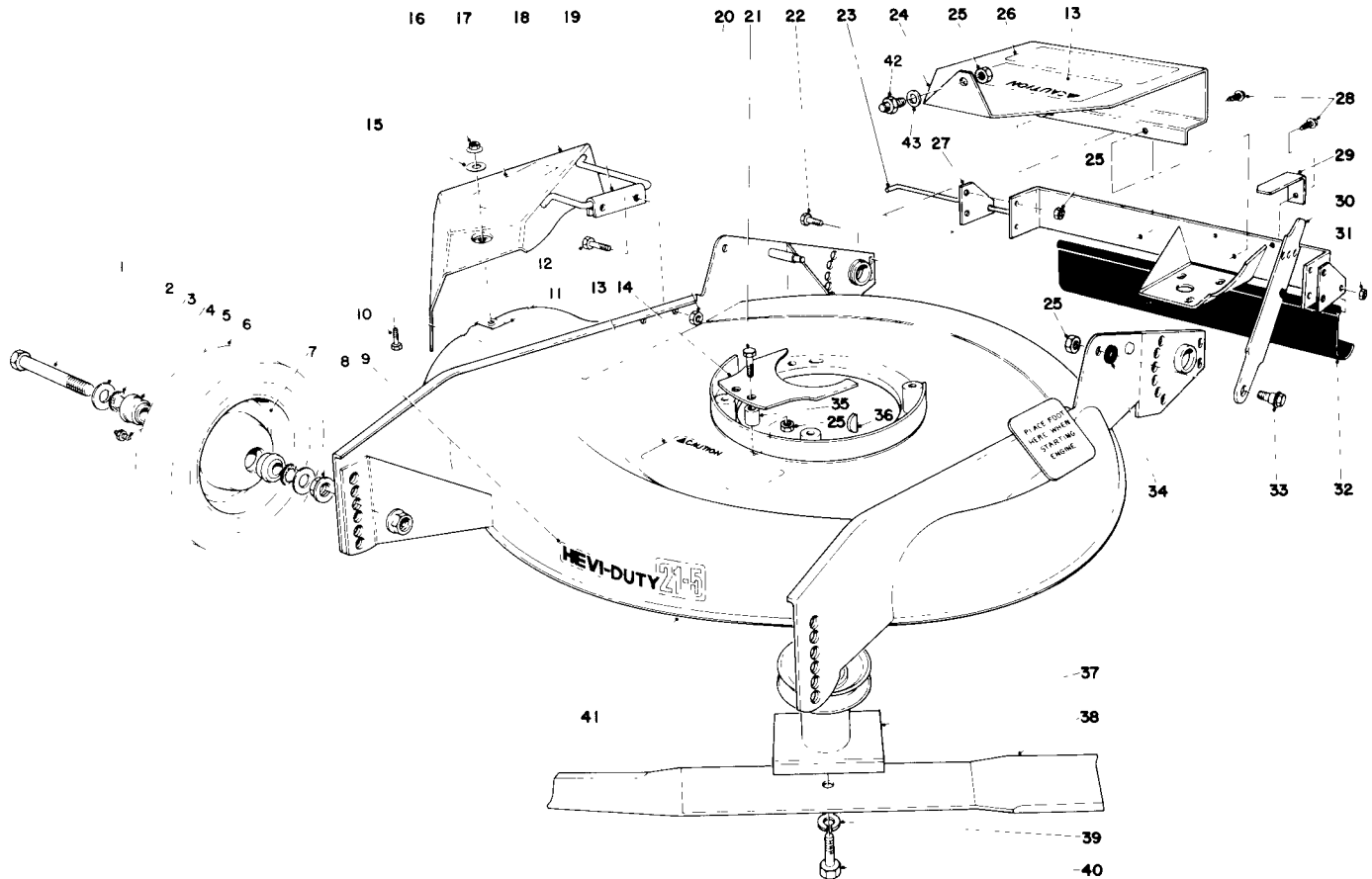


**TORO®**

MODEL 23158-700001 THRU 800001 &amp; UP

**PARTS  
CATALOG****21" WHIRLWIND® HEVI-DUTY S.P.****HOUSING ASSEMBLY**

Ref. No.	Part No.	Description	No. Used
1	325-11	Capscrew	2
2	3256-26	Washer	4
3	26-7500	Felt Washer	4
4	251-180	Bearing	4
5	302-26	Grease Fitting	2
6	5-3543	Tire	2
7	26-2960	Wheel & Tire Assembly (Incl. Ref. #4-6)	2
8	32128-23	Flange Locknut	4
9	28-5390	Decal — Hevi-Duty 21-5	1
10	321-3	Hex Hd. Capscrew	1
11	3290-199	Special Nut	1
12	321-5	Hex Hd. Capscrew	2
13	29-4720	Decal — Safety Instruction	2
14	29-4660	Belt Guide — Front	1

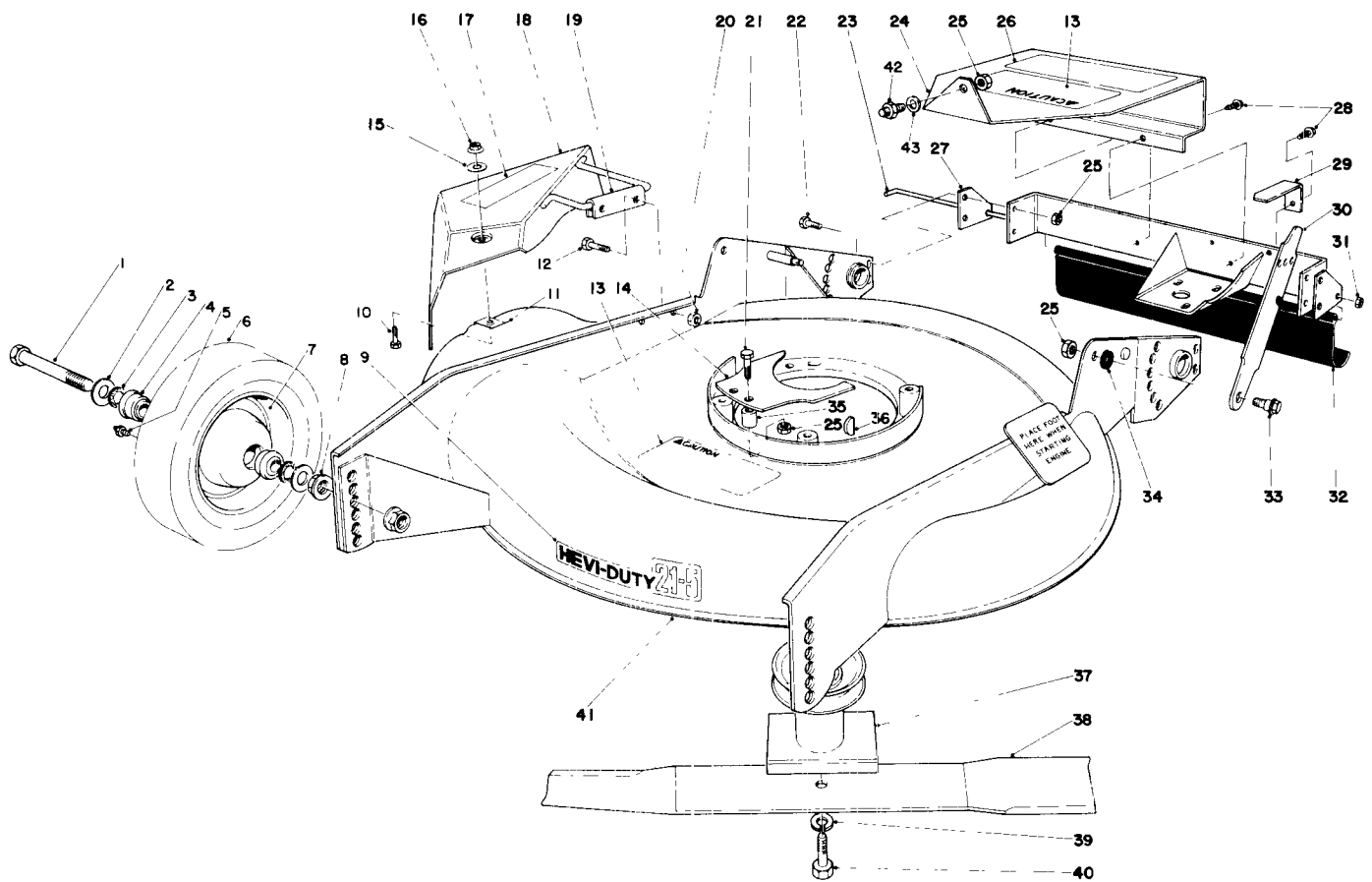
Ref. No.	Part No.	Description	No. Used
15	3256-16	Washer	1
16	32128-10	Flange Nut	1
17	26-7760	Decal — Deflector	1
18	26-7750	Deflector	1
19	26-9300	Hinge - U - Bracket	1
20	32146-17	Nut	2
21	322-16	Hex Hd. Capscrew	2
22	322-5	Hex Hd. Capscrew	4
23	22-5160	Safety Shield Rod	1
24	29-4460	Shroud	1
25	32146-5	Locknut	3
26	29-5570	Decal — Operating Instructions	1
27	29-6300	Bracket — Safety Shield	2
28	32140-16	Sems Screw	3
29	29-4710	Belt Guide — Rear	1

COPYRIGHT 1977 BY

**TheToroCompany**

MINNEAPOLIS, MINN 55420 — U S A

**PRICE \$1.00**

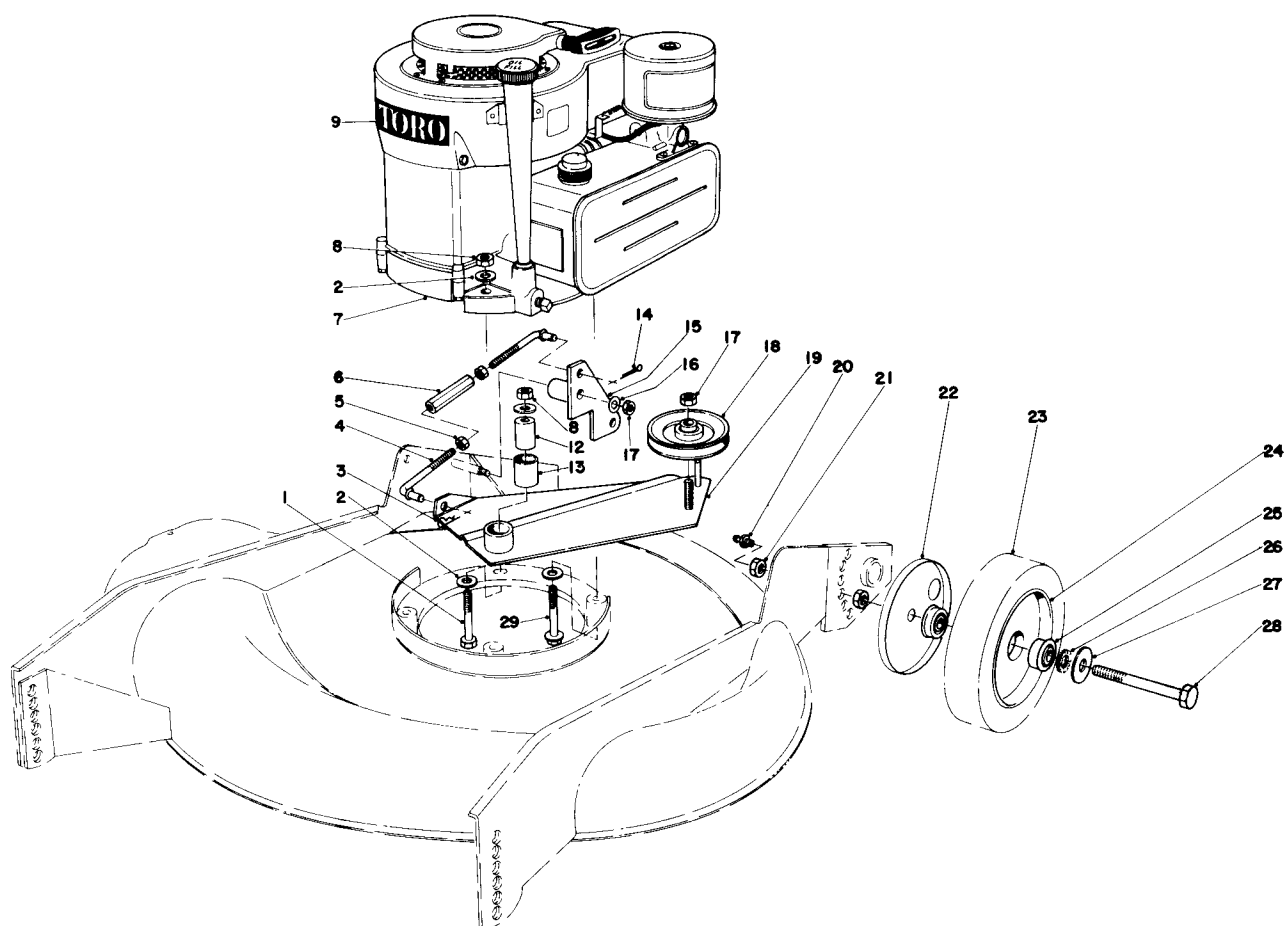


## HOUSING ASSEMBLY (Continued)

Ref. No.	Part No.	Description	No. Used
30	5-2446	Latch Handle	2
31	3296-2	Locknut	1
32	29-6610	Rear Safety Shield	1
33	5-2490	Shoulder Screw	2
34	3-3287	Rubber Washer	2
35	29-4750	Spacer — Belt Guide	2
36	3257-3	Key — Woodruff	1

Ref. No.	Part No.	Description	No. Used
37	29-4570	Blade Retainer	1
38	26-5790	Blade	1
39	3253-22	Special Lockwasher	1
40	26-8730	Place Bolt	1
41	29-4480	Housing	1
42	2210-199	Head Bolt Stud	1
43	2210-198	Washer	1
*	6-9739	Loose Parts	1

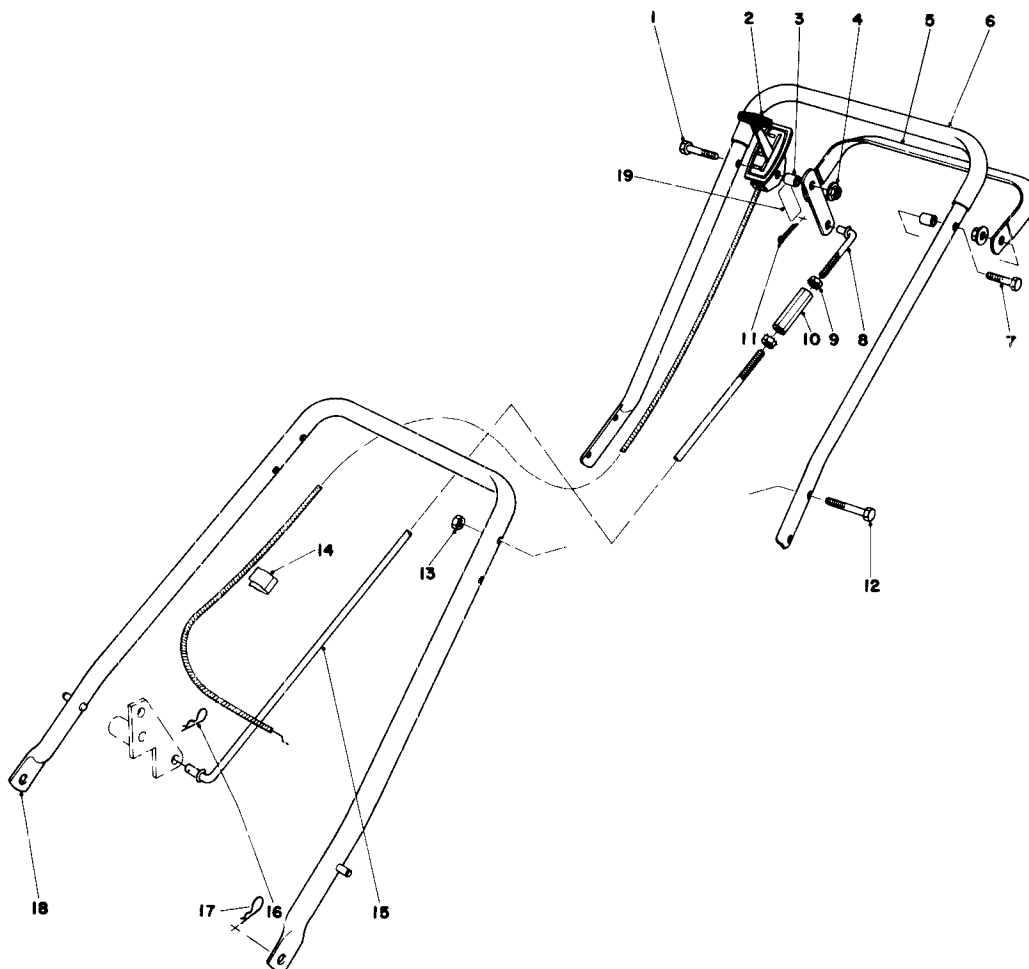
\*Not Illustrated



## ENGINE ASSEMBLY

Ref. No.	Part No.	Description	No. Used
1	322-13	Capscrew	3
2	3256-23	Washer	7
3	3290-290	Hairpin Cotter	1
4	29-4830	Link — Control Rod	2
5	32149-1	Keps Nut	2
6	3-6481	Sleeve — Control Rod	1
7	221-566	Engine	1
8	32146 5	Locknut	3
9	26-7730	Decal — TORO	1
12	3-6457	Pedestal	1
13	256-82	Bushing	1
14	3272-10	Cotter Pin	1
15	29-4680	Crank	1
16	3256-24	Washer	1

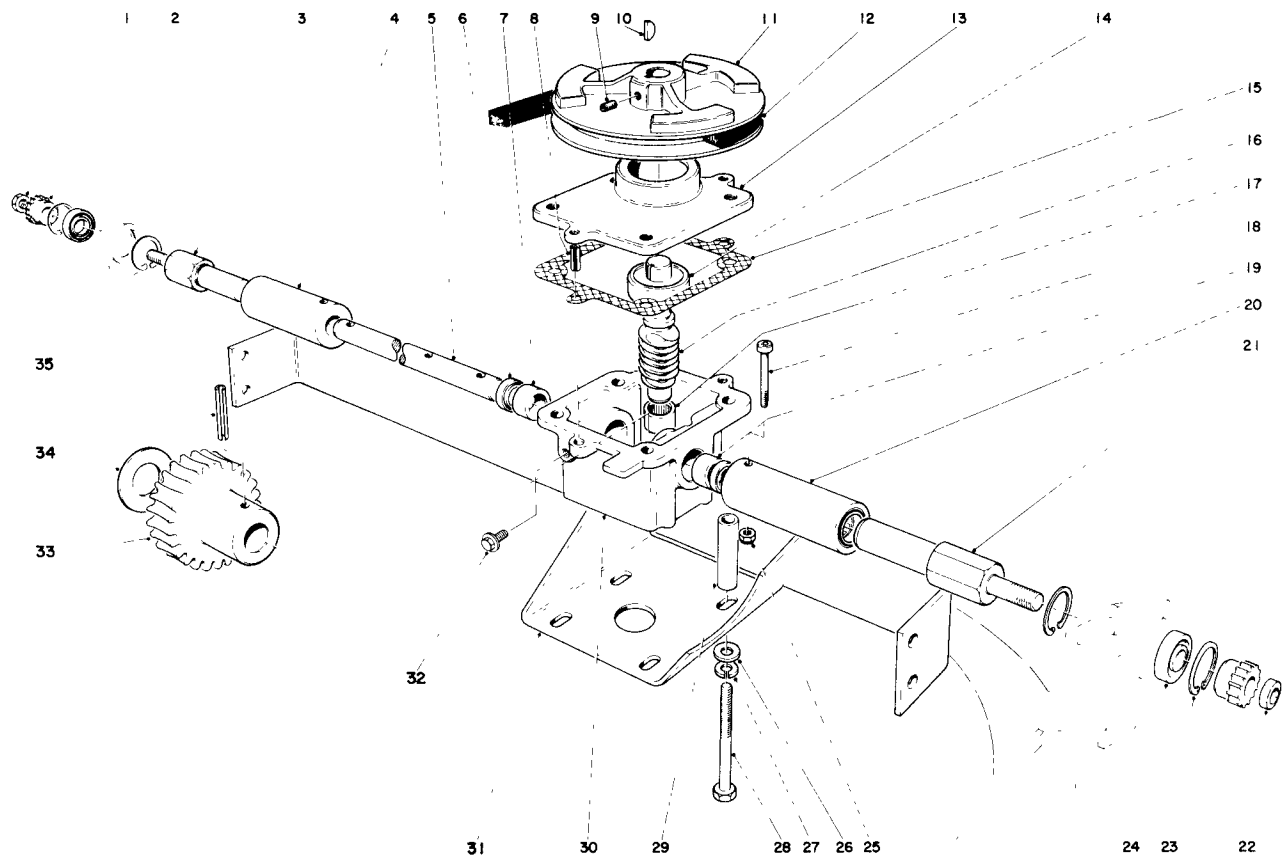
Ref. No.	Part No.	Description	No. Used
17	32146-2	Locknut	2
18	3-4243	Pulley	1
19	29-4600	Idler Arm (Incl. Ref. #13)	1
20	302-5	Grease Fitting	2
21	32153-5	Locknut	4
22	3-6451	Wheel Cover	2
23	3-7404	Tire	2
24	2-9919	Wheel & Tire Assembly, Rear (Incl. Ref. #23 & 25)	2
25	251-180	Flanged Bearing	4
26	26-7500	Felt Washer	2
27	3256-26	Washer	2
28	29-6630	Wheel Bolt — Rear	2
29	11-0580	Screw	1



## HANDLE ASSEMBLY

Ref. No.	Part No.	Description	No. Used
1	321-11	Hex Hd. Capscrew	1
2	29-8610	Control – Throttle	1
3	25-2980	Sleeve Pivot	2
4	32128-10	Locknut	2
5	29-4700	Control Bail	1
6	26-7840	Upper Handle	1
7	321-9	Hex Hd. Capscrew	1
8	29-4830	Link – Control Rod	1
9	32149-1	Keps Nut	2

Ref. No.	Part No.	Description	No. Used
10	3-6481	Sleeve – Control Rod	1
11	3272-10	Cotter Pin	1
12	321-8	Hex Hd. Capscrew	4
13	32146-17	Locknut	4
14	5-0748	Clamp	1
15	29-4850	Rod Control	1
16	3290-290	Hairpin Cotter	1
17	3290-255	Hairpin Cotter	1
18	26-7830	Lower Handle	1
19	29-8590	Decal Traction Control	1

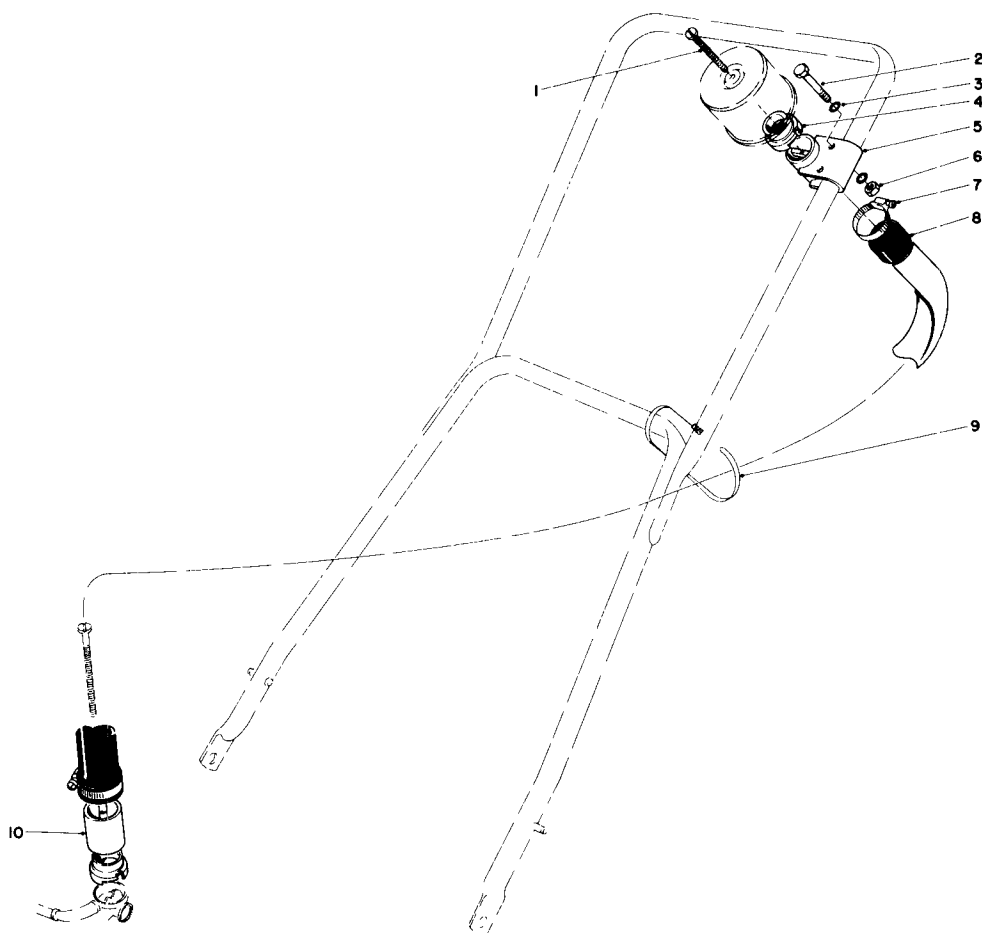


## GEAR CASE ASSEMBLY

Ref. No.	Part No.	Description	No. Used
1	3220-3	Jam Nut (R.H. Thd.)	1
2	3-3039	Pinion Kit	1
3	3-6452	Shaft - Output (R.H. Thd.)	1
4	4-1639	Clutch Assembly, Right	1
5	5-3437	Shaft - Gear Box	1
6	253-140	Oil Seal	2
7	256-263	Bushing	1
8	32121-1	Roll Pin	2
9	3246-3	Setscrew	1
10	3257-27	Woodruff Key	1
11	5-3681	Pulley Gear Box	1
12	29-4650	V-Belt	1
13	3-6438	Cover - Gear Case	1
14	251-144	Bearing	1
15	3-0734	Gasket	1
16	5-3680	Worm Shaft	1
17	252-51	Needle Bearing	1
18	5-1491	Drive Screw	2
19	256-110	Bushing	1
20	4-1649	Clutch Assembly, Left	1

Ref. No.	Part No.	Description	No. Used
21	3-6454	Shaft - Output (L.H. Thd.)	1
22	3220-16	Nut (L.H. Thd.)	1
23	32151-8	Retaining Ring	4
24	251-183	Bearing	2
25	3296-2	Locknut	2
26	3256-22	Washer	4
27	3253-3	Lockwasher	4
28	321-14	Capscrew	4
29	19-1350	Spacer	4
30	5-8339	Gear Case (Incl. Ref. #6-7 & 17 & 19)	1
31	29-5970	Support - Gear Case	1
32	28-1550	Hex Washer Hd. Screw	1
33	3-6436	Worm Gear	1
34	3-0724	Thrust Washer	1
35	32121-63	Groove Pin	1
*	5-8329	Gear Assembly, Complete (Incl. Ref. #5-8 & 13-17, 19, 28, 30 & 32-35)	1

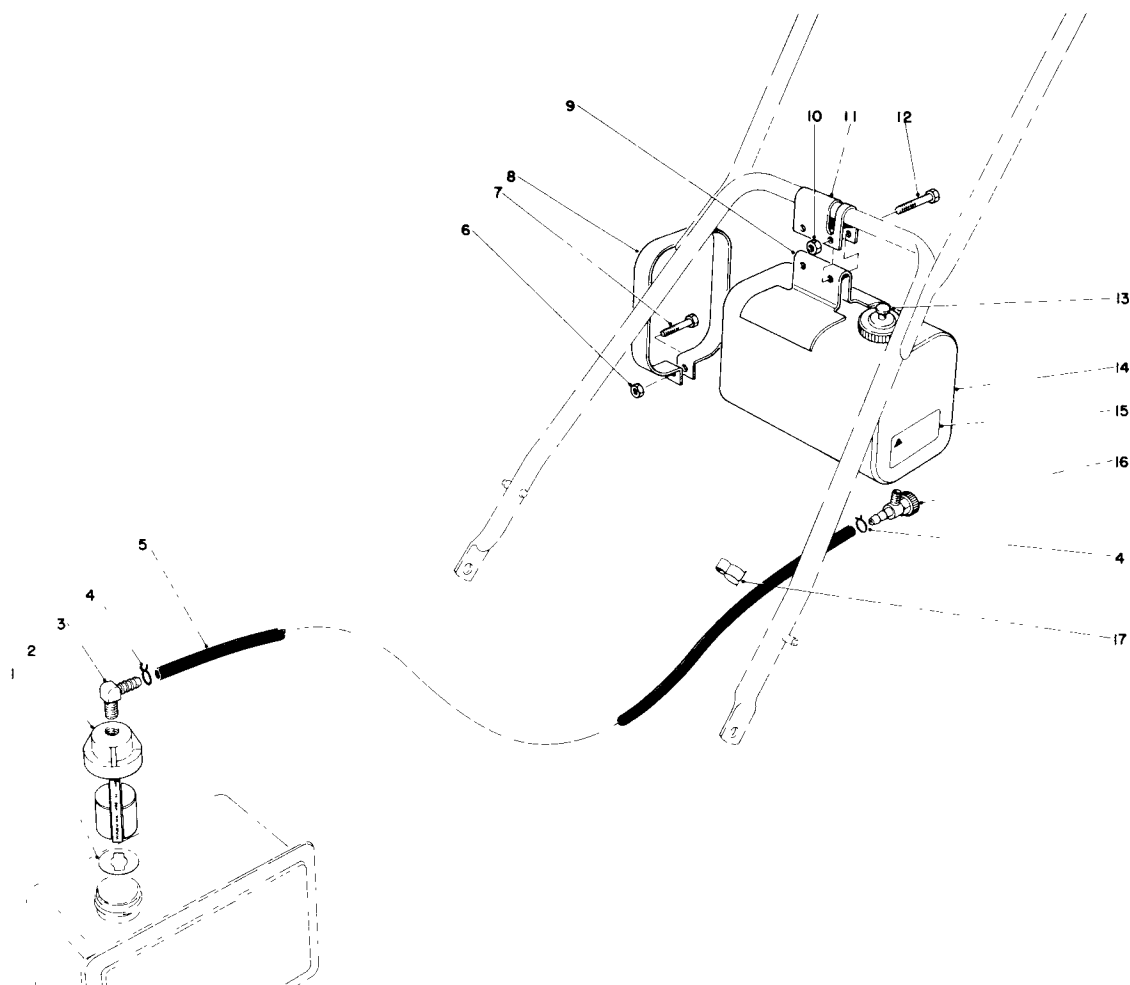
\*Not Illustrated



## REMOTE AIR CLEANER KIT NO. 28-0580 (Optional)

Ref. No.	Part No.	Description	No. Used
1	3290-405	Pan Hd. Machine Screw	2
2	322-7	Hex Hd. Capscrew	2
3	3256-23	Plain Washer	4
4	27-9730	Gasket	1
5	27-9960	Mounting Bracket Air Cleaner	1

Ref. No.	Part No.	Description	No. Used
6	3217-6	Full Hex Nut	2
7	2412-3	Hose Clamp	2
8	27-9900	Hose Air Cleaner	1
9	3290-379	Cable Tie	1
10	27-9970	Hose Coupling	1

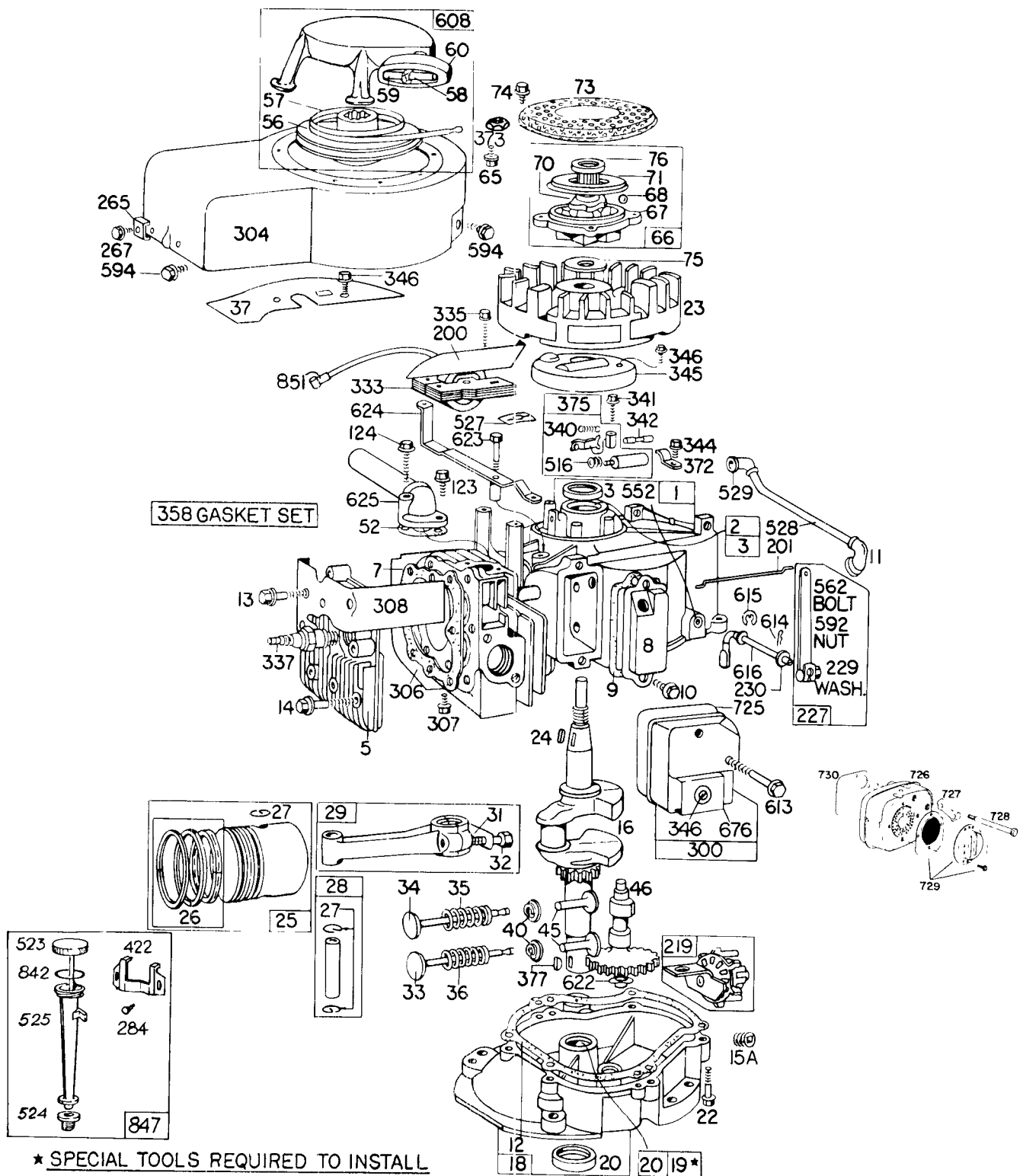


## REMOTE FUEL TANK KIT NO. 28-5590 (Optional)

Ref. No.	Part No.	Description	No. Used
1	28-4850	Gasket	1
2	28-4840	Fuel Control Valve (Incl. Ref. # 1)	1
3	304-75	Elbow Fitting	1
4	2210-87	Clamp Hose	2
5	28-5600	Fuel Line	1
6	32146-17	Locknut	2
7	321-10	Hex Hd. Capscrew	2
8	3-6346	Strap Fuel Tank	2

Ref. No.	Part No.	Description	No. Used
9	3-6345	Bracket Fuel Tank	1
10	32146-5	Locknut	2
11	22-5060	Clamp	1
12	322-7	Hex Hd. Capscrew	2
13	222-15	Cap	1
14	222-14	Fuel Tank (Incl. Ref. #13)	1
15	28-6910	Decal – Caution	1
16	304-71	Fuel Valve & Filter Screen	1
17	3-5181	Clamp	1

# ENGINE BRIGGS & STRATTON MODEL 130902-0543-01





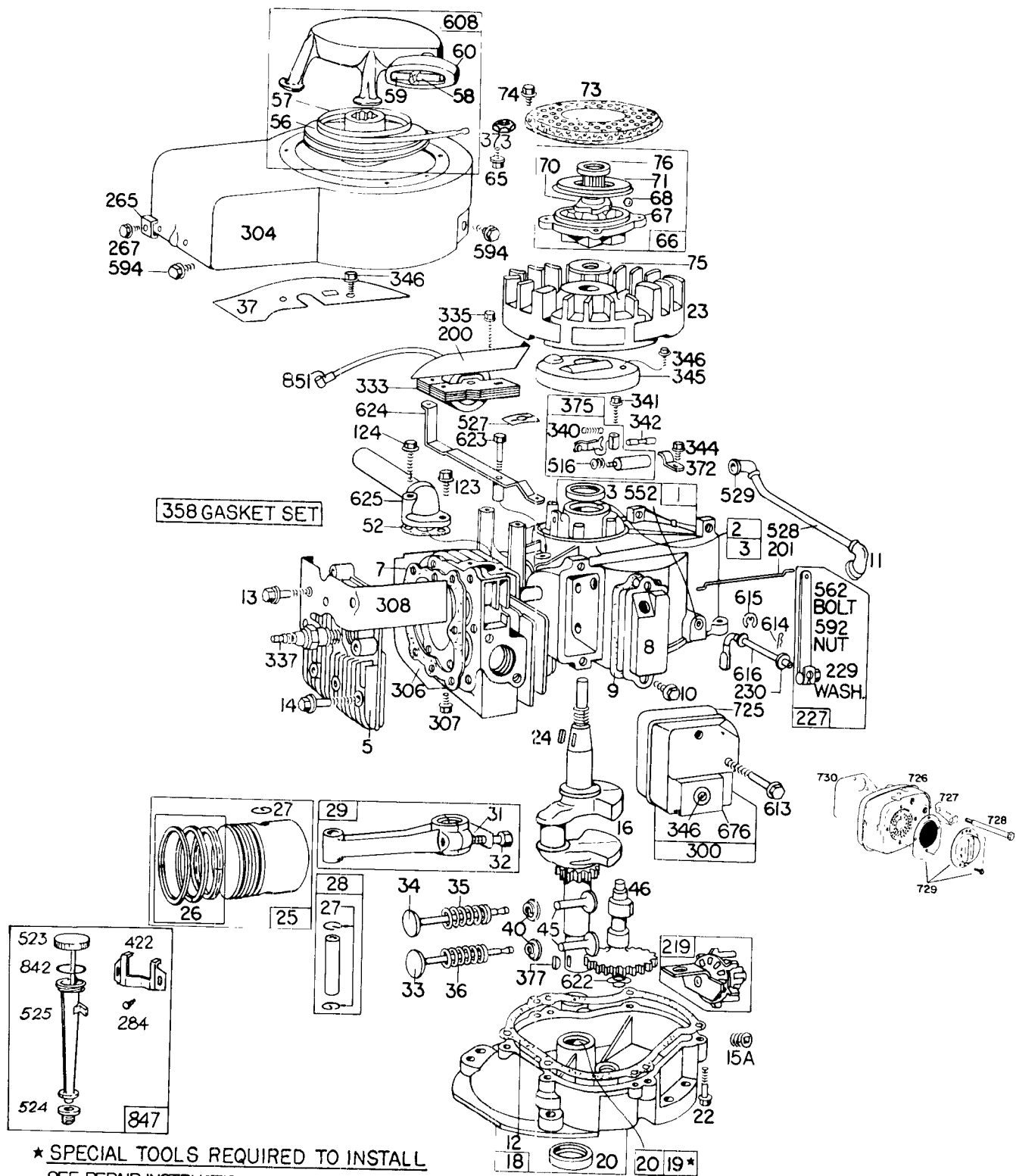
# ENGINE BRIGGS & STRATTON MODEL 130902-0543-01

Ref. No.	Part No.	Description	No. Used
1	391981	Cylinder Assembly	1
2	297565	Bushing—Cylinder Note: Requires special tools for installation.	1
3	89660	Seal—Oil	1
5	211542	Head—Cylinder	1
7	*270383	Gasket—Cylinder Head	1
8	297261	Breather—Valve Chamber	1
9	*27549	Gasket—Valve Cover	1
10	93394	Screw—Breather Mtg. Sem	1
11	67738	Grommet—Breather	1
12	*270069	Gasket—Crankcase—.015" thick (Standard)	1
	*270122	Gasket—Crankcase—.005" thick	1
	*270123	Gasket—Crankcase—.009" thick	1
13	93368	Screw—Cylinder Head (2-3/32" long) Note: 93583 Stud—Cylinder Head (1) 22963 Washer (1)	1
14	93369	Screw—Cylinder Head (2-15/32" long) Note: 93583 Stud—Cylinder Head (1) 22963 Washer (1)	1
15A	93418	Plug—Oil Drain (Hexagon Socket Head)	1
16	261370	Crankshaft	1
18	297587	Sump—Oil	1
19	297604	Bushing—Oil Sump Note: Requires special tools for installation.	1
20	294167	Seal—Oil	1
22	93032	Screw—Sump Mtg. Sem	1
23	297229	Flywheel—Magnet	1
24	61760	Key—Flywheel	1
25	298904	Piston Assembly—Standard	1
	298905	Piston Assembly—.010" O.S.	1
	298906	Piston Assembly—.020" O.S.	1
	298907	Piston Assembly—.030" O.S. PISTON RING SETS: Note: For Chrome Piston Ring Set — standard size — order Part No. 299742.	1
26	298982	Ring Set—Std. Piston	1
	298983	Ring Set—.010" O.S. Piston	1
	298984	Ring Set—.020" O.S. Piston	1
	298985	Ring Set—.030" O.S. Piston	1
27	26026	Lock—Piston Pin	1
28	298909	Pin Assembly—Piston—Standard	1
	298908	Pin Assembly—Piston—.005" O.S.	1
29	299429	Rod Assembly—Connecting Note: For Connecting Rod with .020" undersize Crankpin Bore—order No. 390459	1

Ref. No.	Part No.	Description	No. Used
31	221876	Lock—Conn. Rod Screw	1
32	92296	Screw—Connecting Rod	1
33	211119	Valve—Exhaust	1
34	261044	Valve—Intake	1
35	260552	Spring—Intake Valve	1
36	26478	Spring—Exhaust Valve	1
37	222443	Guard—Flywheel	1
40	93312	Retainer—Valve Spring	1
45	260642	Tappet—Valve	1
46	211117	Gear—Cam	1
52	*270070	Gasket—Intake Elbow Mounting	1
56	295871	Pulley—Rewind Starter	1
57	294303	Spring—Rewind Starter	1
58	66884	Rope—Rewind Starter—63" long (For use with Plastic Pulley) If longer Rope is required, order Rope No. 66894 and cut to length.	1
59	230228	Pin—Starter Rope	1
60	66728	Grip—Starter Rope	1
65	93067	Screw—Stamped Steel Rewind Starter Hsg. Mounting	1
66	298310	Clutch Assembly—Rewind Starter	1
67	211383	Housing—Starter Clutch	1
68	63770	Ball—Clutch	1
70	298436	Ratchet—Starter Clutch	1
71	221653	Washer—Clutch Retainer	1
73	221923	Screen—Rewind Starter	1
74	93490	Screw—Rotating Screen Mtg. Sem	1
75	220865	Washer—Spring	1
76	68238	Washer—Ratchet Sealing	1
123	93512	Screw—Intake Elbow Mtg.	1
124	93367	Screw—Intake Elbow Mtg.	1
200	221480	Guide—Air	1
201	260649	Link—Governor	1
219	297249	Oil Slinger Gear, Governor and Bracket	1
227	391967	Lever Assembly—Governor	1
229	220680	Washer—Governor Lever	1
230	222450	Washer—Governor Crank	1
265	22372	Clamp—Casing	1
267	93469	Screw—Clamp Mtg.	1
284	93804	Screw—Clamp Mtg.	1
300	297274	Muffler—Exhaust (Side Outlet)	1
304	392277	Housing—Blower	1
306	221484	Shield—Cylinder	1
307	93042	Screw—Sem	1
308	221452	Cover—Cylinder Head	1
333	298316	Armature—Magnet	1
335	93414	Screw—Armature Mtg. Sem	1

\* Included in Gasket Set — Part No. 297616.

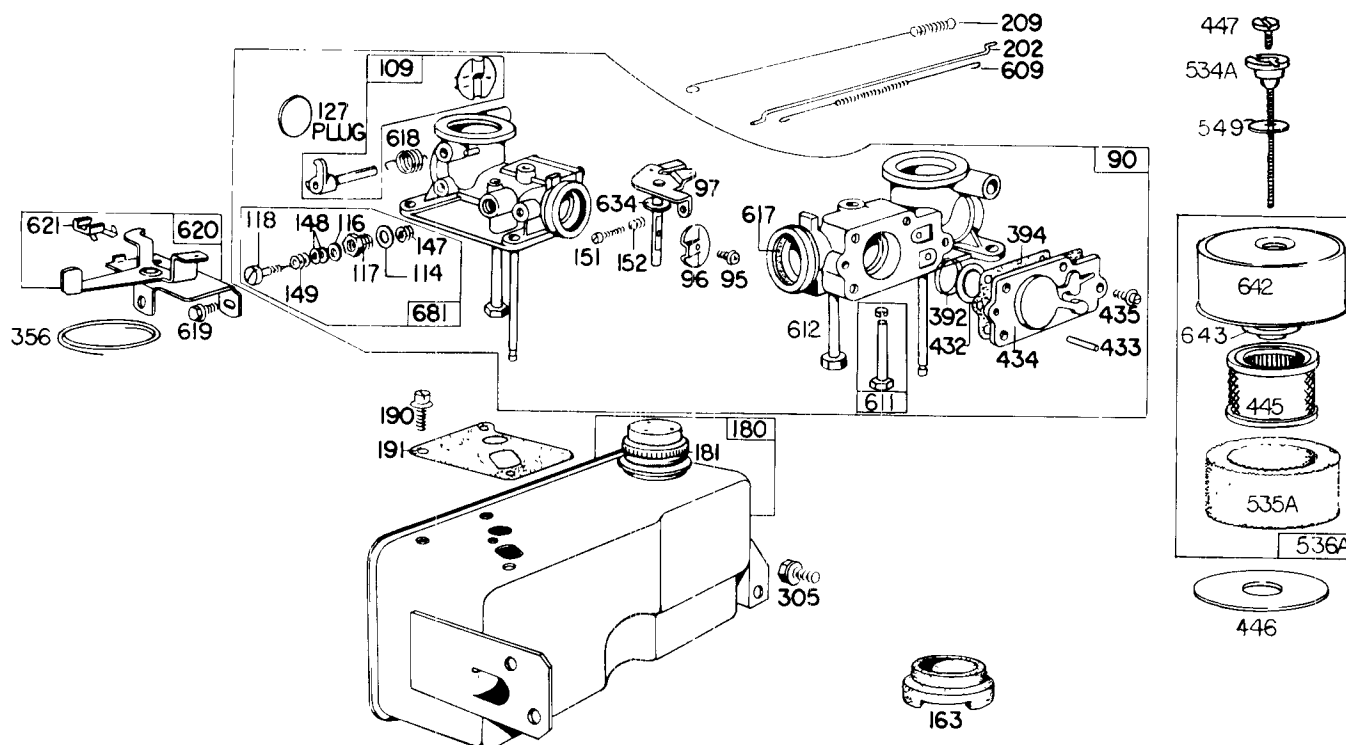
# ENGINE BRIGGS & STRATTON MODEL 130902-0543-01



# ENGINE BRIGGS & STRATTON MODEL 130902-0543-01 (Continued)

Ref. No.	Part No.	Description	No. Used
337	293918	Plug—Spark (with gasket) (1½" High—38 M.M.) Note: Use Ignition Cable Terminal No. 221798.	1
340	26018	Spring—Breaker Arm	1
341	93381	Screw—Breaker Arm Mounting Sem	1
342	65704	Plunger—Breaker Point	1
344	93042	Screw—Condenser Clamp Mtg. Sem	1
345	220366	Cover—Breaker Point and Condenser	1
346	93705	Screw—Hex. Hd.	1
358	297616	Gasket Set	1
372	220477	Clamp—Condenser	1
373	92987	Nut—Hex.	4
375	294628	Breaker Points and Condenser Set Note: 299061 Ignition Kit Includes: 294628 Point Set, 65704 Plunger, 61760 Key— Flywheel	1
377	93065	Key—Woodruff No. 6	1
422	222576	Clamp—Oil Filler Tube	1
516	260374	Spring—Connector	1
523	391840	Cap with Dipstick (Screw Cap)	1
524	68838	Seal—Oil Filler Tube to Sump Note: 270306 Seal—Oil Filler Tube to Sump	1
525	280133	Tube—Oil Filler to Sump (For Plastic Screw Cap Dipstick)	1
527	93376	Clip—Breather Pipe	1
528	230717	Tube—Breather	1

Ref. No.	Part No.	Description	No. Used
529	67608	Grommet—Breather Tube	1
552	231078	Bushing—Governor Shaft	1
562	231082	Bolt—Governor Lever	1
592	231082	Nut—Hex	1
594	93559	Screw—Blower Housing Mounting Sem	1
608	390463	Starter Assembly—Rewind	1
613	93377	Screw—Muffler Mtg.	1
614	93306	Cotter—Hair Pin	1
615	93307	Retainer—E-Ring	1
616	231076	Crank—Governor	1
622	260676	Washer—Spring (Used between cam gear boss and oil slinger bracket)	1
623	93566	Screw—Shoulder	1
624	297252	Lever—Linkage	1
625	297254	Elbow and Tube—Intake	1
676	221488	Deflector—Exhaust (Side Outlet)	1
725	221885	Shield—Heat	1
842	270920	Seal—Filler Cap	1
847	392066	Dipstick and Tube Assembly (Plastic Screw Cap)	1
851	221798	Terminal—Ignition Cable	1
<b>Spark Arrestor Muffler (Optional)</b>			
726	391313	Muffler (Incl. Ref. #727, 728 & 730)	1
727	222263	Lockplate	1
728	93704	Capscrew	2
729	392194	Deflector Assembly	1
730	221885	Heat Shield	1



## ENGINE BRIGGS & STRATTON MODEL 130902-0543-01

Ref. No.	Part No.	Description	No. Used
90	299448	Carburetor Assembly	1
95	93499	Screw—Throttle Valve to Shaft Sem	1
96	211237	Valve—Throttle	1
97	299692	Shaft and Lever—Throttle	1
109	390076	Shaft, Lever and Valve—Choke	1
114	66594	Gasket—Needle Valve Nut	1
116	65978	Packing—Needle Valve	1
117	230590	Nut—Needle Valve	1
118	23433	Valve—Needle	1
127	22831	Plug—Welch	1
147	230591	Seat—Needle Valve	1
148	22235	Washer—Needle Valve	2
149	26336	Spring—Needle Valve	1
151	92634	Screw—Machine, Rd. Hd.	1
152	260575	Spring—Throttle Adjustment	1
163	27660	Gasket—Air Cleaner	1
180	297257	Tank Assembly—Fuel	1
181	392304	Cap—Fuel Tank	1
190	93341	Screw—Fuel Tank Mtg.	1
191	*270073	Gasket—Fuel Tank Mtg.	1
202	260654	Link—Throttle	1
209	261047	Spring—Governor (For 3100 RPM Top Speed Setting)	1
305	93158	Screw—Tank Bracket Mounting Sem	1

Ref. No.	Part No.	Description	No. Used
356	298479	Wire—Ground	1
392	260455	Spring—Fuel Pump Diaphragm	1
394	270026	Diaphragm	1
432	221377	Cap—Spring	1
433	93265	Pin—Diaphragm Cover	1
434	210959	Cover—Diaphragm	1
435	93141	Screw—Diaphragm Cover	1
445	392308	Cartridge, Air Cleaner	1
446	222593	Base, Air Cleaner	1
447	93817	Screw, Cover Mtg.	1
534A	93818	Screw—Air Cleaner	1
535A	270979	Element—Air Cleaner	1
536A	392368	Cleaner Assembly—Air	1
549	270978	Washer (Below Internal Screw Hd.)	1
609	260029	Spring—Throttle Link	1
611	391813	Fuel Pipe and Clip Assembly	1
612	296811	Pipe—Fuel (Plastic)	1
617	270074	Seal—Intake Elbow Tube	1
618	260648	Spring—Choke Return	1
619	93380	Screw—Control Plate Mounting	1
620	297548	Plate Assembly—Remote Carburetor Control	1
621	297472	Switch—Stop	1
634	270167	Washer—Throttle Shaft (Felt)	1
642	222626	Cover—Air Cleaner	1
643	222594	Cup—Air Cleaner	1
681	299060	Needle Valve Kit	1

\*Included in Gasket Set — Part No. 297616.

## PRODUCT CHANGES

In an effort to make improvements available to TORO owners as quickly as possible, minor changes are incorporated into Toro's products from time to time that do not become immediately shown in the Parts Catalog. If such a change apparently has been made in your unit, which is not reflected in your manual, see your TORO Distributor for information and part numbers.

## IDENTIFICATION AND ORDERING

### Model and Serial Numbers

The 21" Whirlwind Hevi-Duty has two identification numbers: a model number and a serial number. The two numbers are stamped on a plate which is located on left front side of wheel support channel. In any correspondence concerning the 21" Whirlwind Hevi-Duty, supply model and serial numbers to assure that correct information and replacement parts are obtained.

To order replacement parts from an Authorized TORO Distributor, supply the following information:

1. Model and serial numbers of the 21" Whirlwind Hevi-Duty.
2. Part number, description, and quantity of part(s) desired.

**NOTE:** Do not order by reference number if a parts catalog is being used; use the **PART NUMBER**.

## The Toro Promise

*A One Year Limited Warranty on Turf Products Other Than Walk Rotary Mowers*

*The Toro Company promises to repair any TORO Product if defective in materials or workmanship. The following time periods from the date of purchase apply:*

Turf Products . . . . .	1 Year
Hevi-Duty Walk Rotary Mowers . . . . .	90 Days

*The costs of parts and labor are included, but the customer pays the transportation costs on walk rotary mowers.*

Should you feel your TORO is defective and wish to rely on The Toro Promise, the following procedure is recommended:

1. Contact your Authorized TORO Distributor (the Yellow Pages of your telephone directory is a good reference source).
2. The TORO Distributor will advise you on the arrangements that can be made to inspect and repair your product.
3. The TORO Distributor will inspect the product and advise you whether the product is defective and, if so, make all repairs necessary to correct the defect without extra charge to you.

If for any reason you are dissatisfied with the distributor's analysis of the defect or the service performed, you may contact us.

Write:

TORO Turf Products Service Department  
8111 Lyndale Avenue South  
Minneapolis, Minnesota 55420

The above remedy of product defects through repair by an Authorized TORO Distributor is the purchaser's sole remedy for any defect.

THERE IS NO OTHER EXPRESS WARRANTY. ALL IMPLIED WARRANTIES OF MERCHANTABILITY AND FITNESS FOR USE ARE LIMITED TO THE DURATION OF THE EXPRESS WARRANTY.

Some states do not allow limitation on how long implied warranty lasts, so the above limitation may not apply to you.

This Warranty applies only to parts or components which are defective and does not cover repairs necessary due to normal wear, misuse, accidents, or lack of proper maintenance. Regular, routine maintenance of the unit to keep it in proper operating condition is the responsibility of the owner.

All warranty repairs reimbursable under The Toro Promise must be performed by an Authorized TORO Distributor using Toro approved replacement parts.

Repairs or attempted repairs by anyone other than an Authorized TORO Distributor are not reimbursable under The Toro Promise. In addition, these unauthorized repair attempts may result in additional malfunctions, the correction of which is not covered by warranty.

The Toro Company is not liable for indirect, incidental or consequential damages in connection with the use of the product including any cost or expense of providing substitute equipment or service during periods of malfunction or non-use.

Some states do not allow the exclusion of incidental or consequential damages, so the above exclusion may not apply to you.

This warranty gives you specific legal rights, and you may also have other rights which vary from state to state.

## MAINTENANCE RECORD

[illegible]

## MAINTENANCE RECORD

[illegible]

## MAINTENANCE RECORD

[illegible]