



Cargo Bed Kit

Workman® GTX Utility Vehicle

Model No. 07046

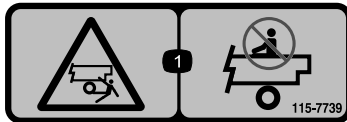
Installation Instructions

Safety

Safety and Instructional Decals



Safety decals and instructions are easily visible to the operator and are located near any area of potential damage. Replace any decal that is damaged or missing.



decal115-7739

115-7739

1. Falling, crushing hazard—do not carry passengers.

Installation

Loose Parts

Use the chart below to verify that all parts have been shipped.

Procedure	Description	Qty.	Use
1	No parts required	—	Prepare the machine.
2	Right cargo bed support Left cargo bed support Flange-head bolt (5/16 x 3/4 inch) Washer	1 1 8 8	Install the cargo bed supports.
3	Prop rod bracket Hex-head bolt (3/8 x 2-1/2 inches) Locknut (3/8 inch)	1 2 2	Install the prop rod bracket (for serial 410500000 and after).
4	Bolt (1/2 x 4-1/2 inches) Flange nut	2 2	Install the cargo bed.



1

Preparing the Machine

No Parts Required

Procedure

1. Park the machine on a level surface.
2. Engage the parking brake.
3. Shut off the machine and remove the key.

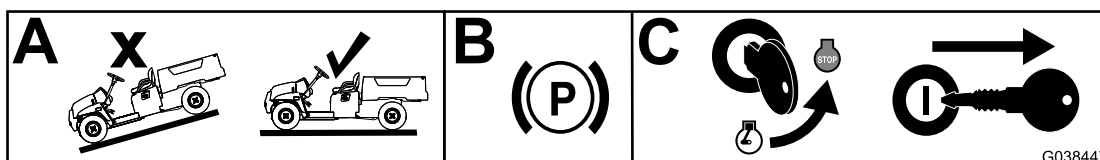


Figure 1

g038447

2

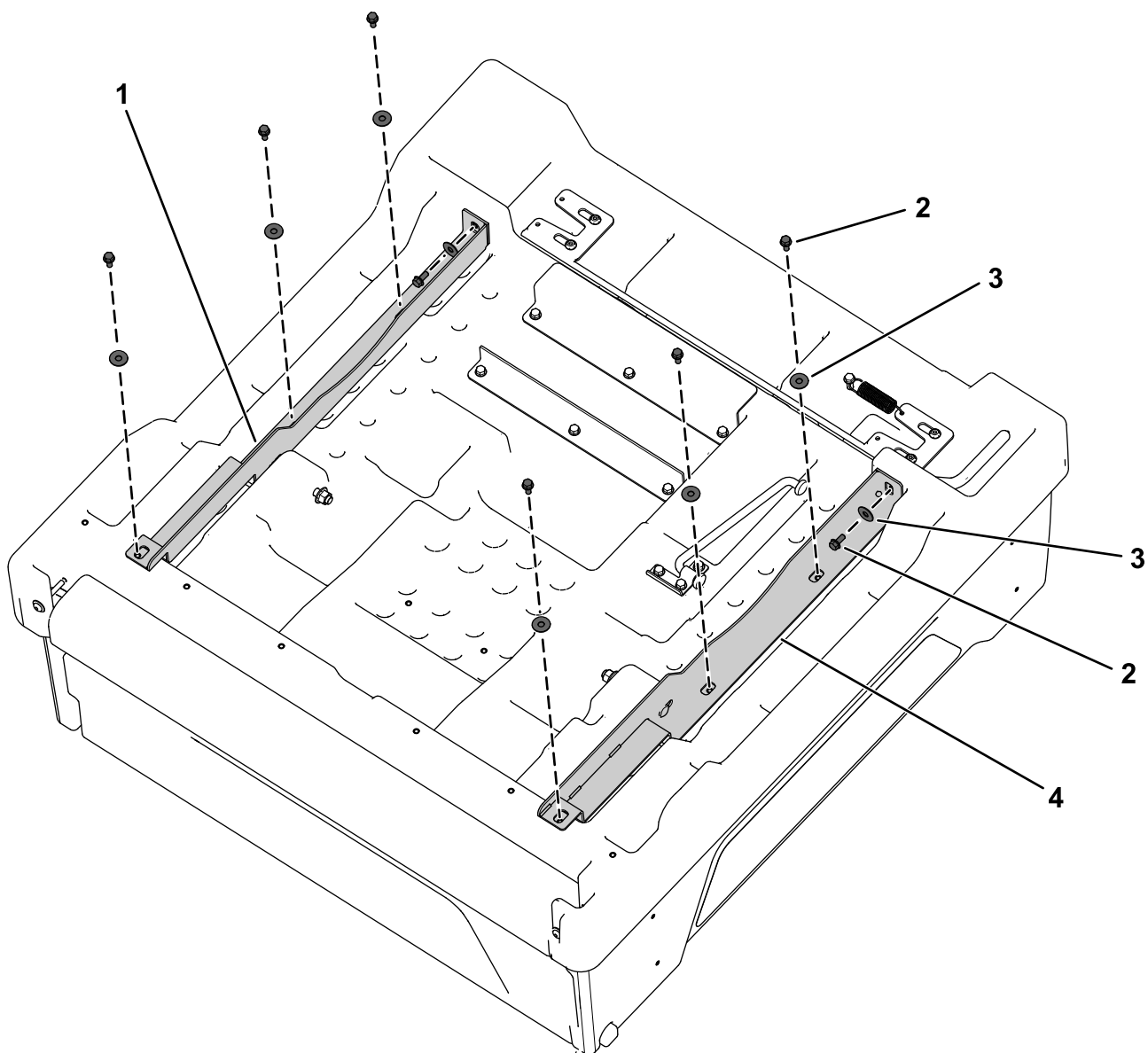
Installing the Cargo Bed Supports

Parts needed for this procedure:

1	Right cargo bed support
1	Left cargo bed support
8	Flange-head bolt (5/16 x 3/4 inch)
8	Washer

Procedure

1. Align the holes in each of the cargo bed supports to the threaded inserts on the bottom of the cargo bed ([Figure 2](#)).
2. Secure the cargo bed supports to the cargo bed using 8 flange-head bolts (5/16 x 3/4 inch) and 8 washers ([Figure 2](#)).
3. Torque the flange-head bolts to 15 to 17 N·m (133 to 147 in-lb).



g322754

Figure 2

- | | |
|---------------------------------------|---------------------------|
| 1. Right cargo bed support | 3. Washer |
| 2. Flange-head bolt (5/16 x 3/4 inch) | 4. Left cargo bed support |

3

Installing the Prop Rod Bracket

For Serial 410500000 and After

Parts needed for this procedure:

1	Prop rod bracket
2	Hex-head bolt (3/8 x 2-1/2 inches)
2	Locknut (3/8 inch)

Procedure

1. Secure the prop rod bracket to the machine frame using 2 hex-head bolts (3/8 x 2-1/2 inches) and 2 locknuts (3/8 inch) as shown in [Figure 3](#).
2. Torque the 2 hex-head bolts (3/8 x 2-1/2 inches) to 41 N·m (30 ft-lb).

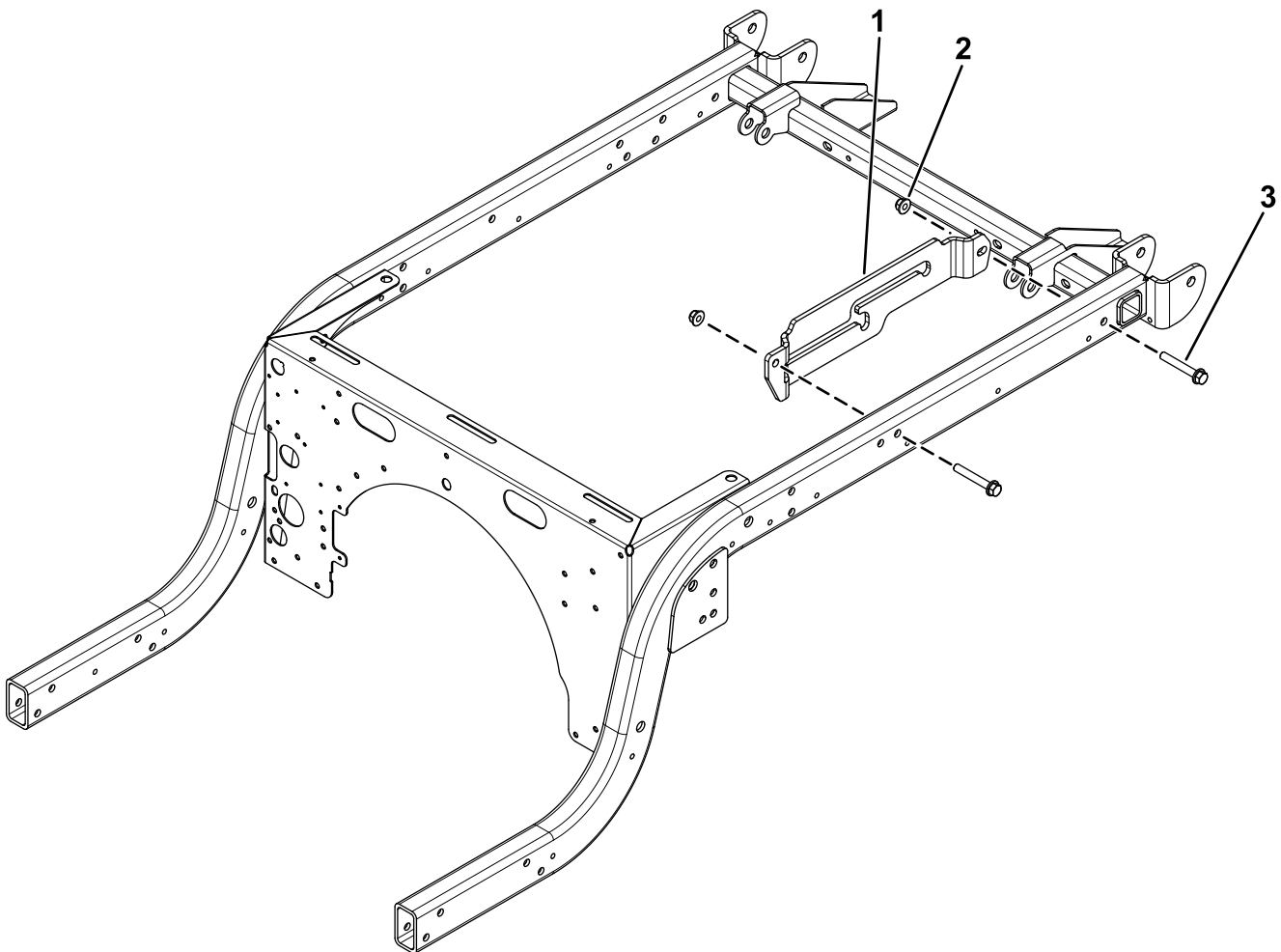


Figure 3

g377340

1. Prop rod bracket
2. Locknut (3/8 inch)
3. Hex-head bolt (3/8 x 2-1/2 inches)

4

Installing the Cargo Bed

Parts needed for this procedure:

2	Bolt (1/2 x 4-1/2 inches)
2	Flange nut

Procedure

1. Park the machine on a level surface, engage the parking brake, shut off the machine, and remove the key.
2. Rotate the cargo bed so that the pivot-bracket assembly and prop rod are facing downward.
3. Using lifting equipment at the front and back of the cargo bed, raise the cargo bed and align it over the frame of the machine with the pivot-bracket assembly rearward (Figure 4).

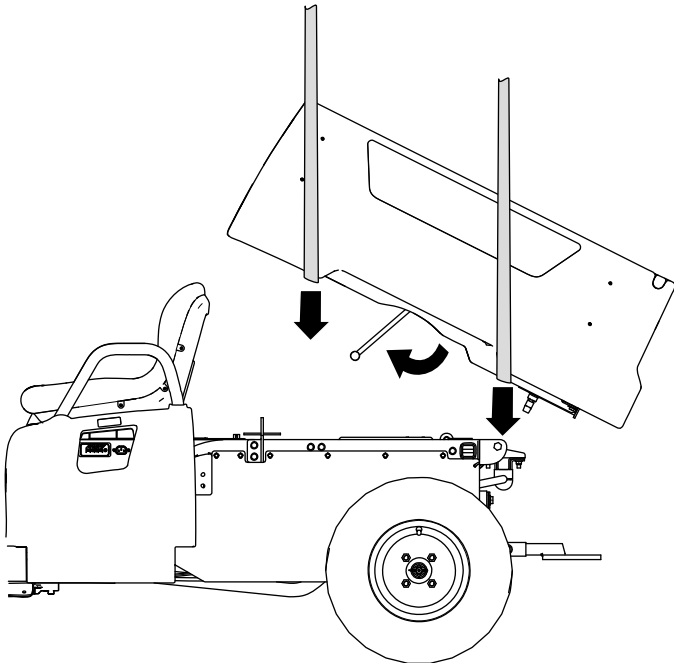


Figure 4

g191339

5. Swing the prop rod forward and insert the short leg of the rod through the key hole (Figure 5).

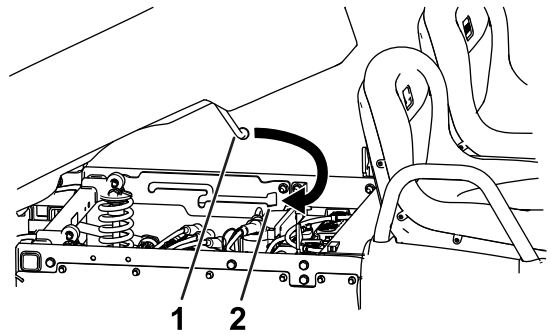


Figure 5

g191980

1. Prop rod
2. Key hole (prop-rod slot)

6. Move the cargo bed and prop rod rearward until the pivot-bracket assembly is aligned over the rear-frame channel.
7. Carefully lower the cargo bed until the holes in the pivot brackets align with the mounting holes in the cargo bed supports (Figure 6).

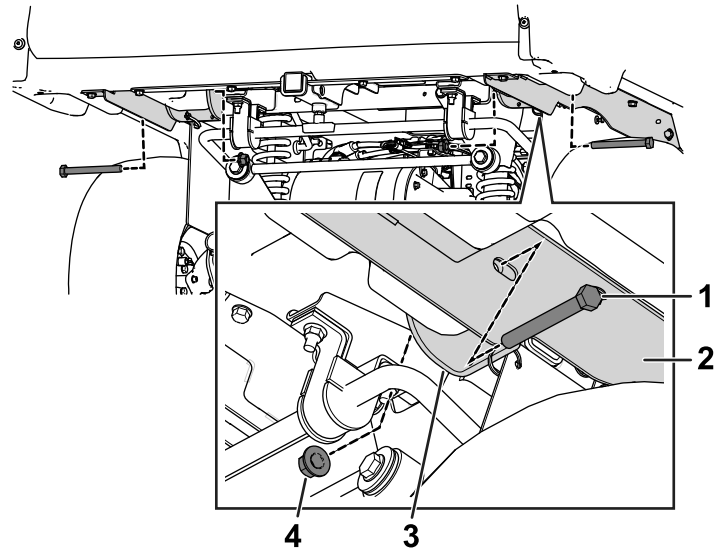


Figure 6

g191148

1. Bolt (1/2 x 4-1/2 inches)
2. Cargo bed support
3. Pivot bracket
4. Flange nut

4. Adjust the height and position of the lifting equipment so that the short leg of the prop rod is aligned with the key hole at the end of the prop-rod slot in the left-frame channel or prop-rod bracket (Figure 5).

Note: You must angle the cargo bed with the lifting equipment in order to align the prop rod to the key hole.

8. Use 2 bolts (1/2 x 4-1/2 inches) and 2 flange nuts to secure the right and left cargo bed supports to the pivot brackets (Figure 6).
9. Torque the 2 flange nuts to 16 to 19 N·m (140 to 170 in-lb).

5

Adjusting the Cargo-Bed Latches

No Parts Required

Procedure

If the cargo-bed latch is out of adjustment, the cargo bed vibrates up and down as you drive the machine. You can adjust the latch posts to make the latches hold the cargo bed securely to the chassis.

1. Verify that the cargo bed is latching.

Note: If the cargo bed does not latch, the bed-latch striker is likely too low. If the cargo bed latches, but vibrates up and down as you drive, the bed-latch striker is likely too high.

2. Pull on the lever on the left, inside of the cargo bed toward you and lift the cargo bed up (Figure 7).

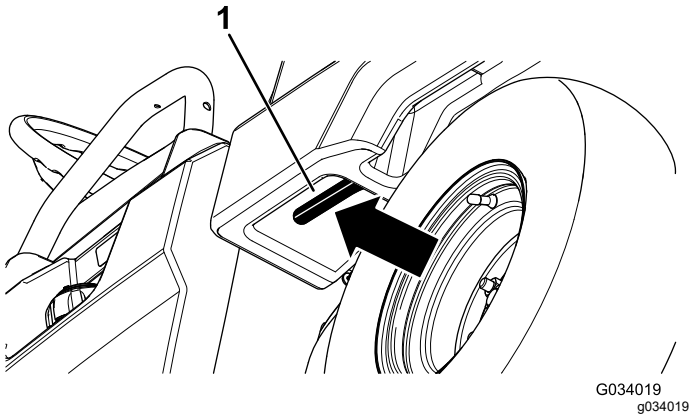


Figure 7

1. Cargo-bed lever

3. Pull the prop rod into the dump position detent slot, securing the bed in a dumping position (Figure 8).

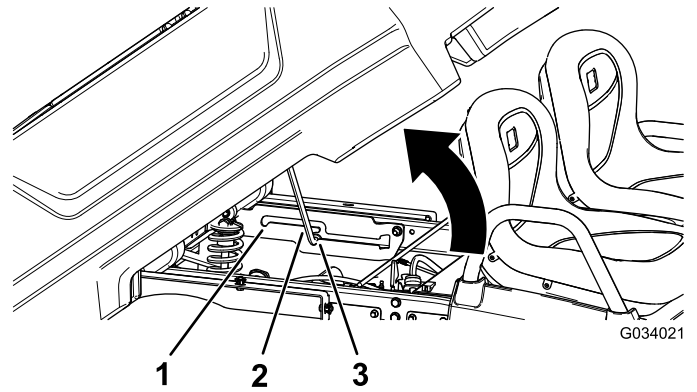


Figure 8

1. Service position detent
2. Prop rod
3. Dump position detent slot

4. Loosen the 2 bolts on the bed-latch striker and move the striker up or down, depending on if the striker is too high or too low (Figure 9).

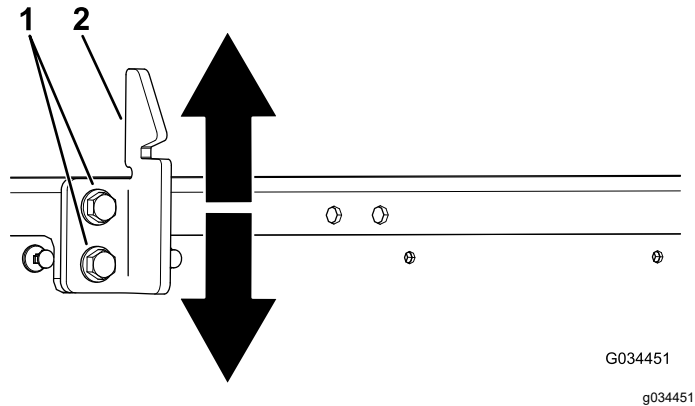


Figure 9

1. Bolt
2. Bed-latch striker

5. Tighten the 2 bolts on the bed-latch striker (Figure 9).
6. Verify that the adjustment is correct by latching the cargo bed several times.

Notes:



Count on it.