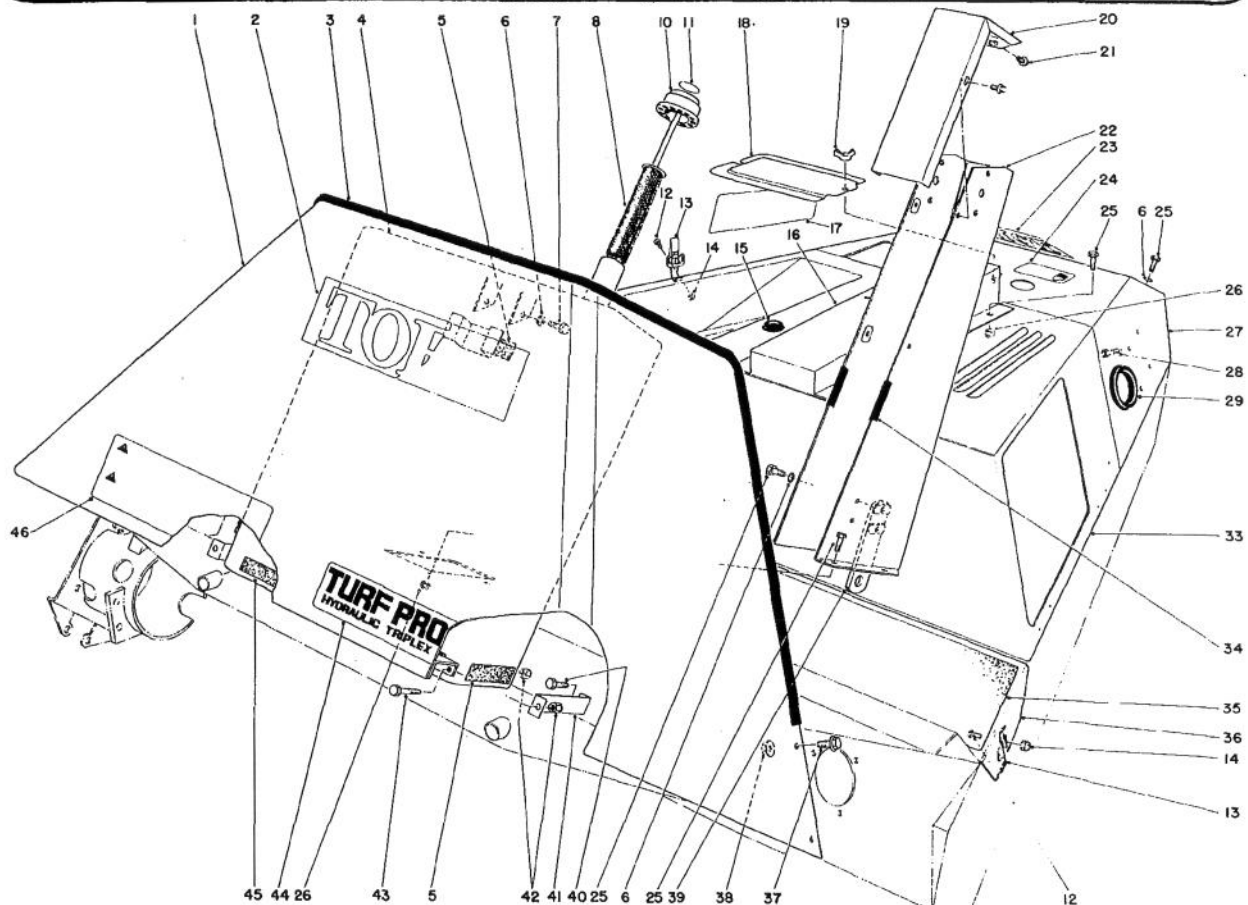


**TORO®**

MODEL NO. 03524 — 800001 & UP  
 MODEL NO. 03590 — 800001 & UP

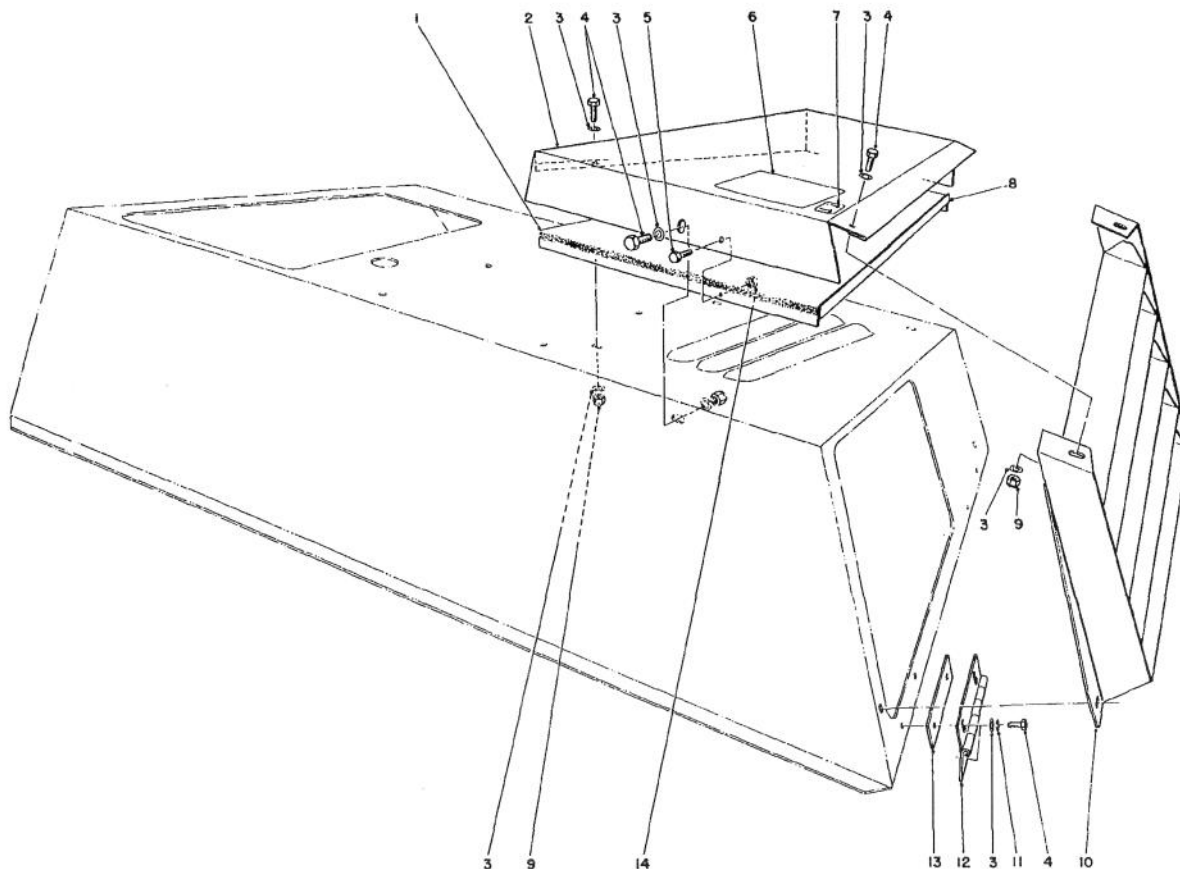
**PARTS  
 CATALOG**

**TURF PRO 84™**



**HYDRAULIC RESERVOIR AND FRONT SHROUD**

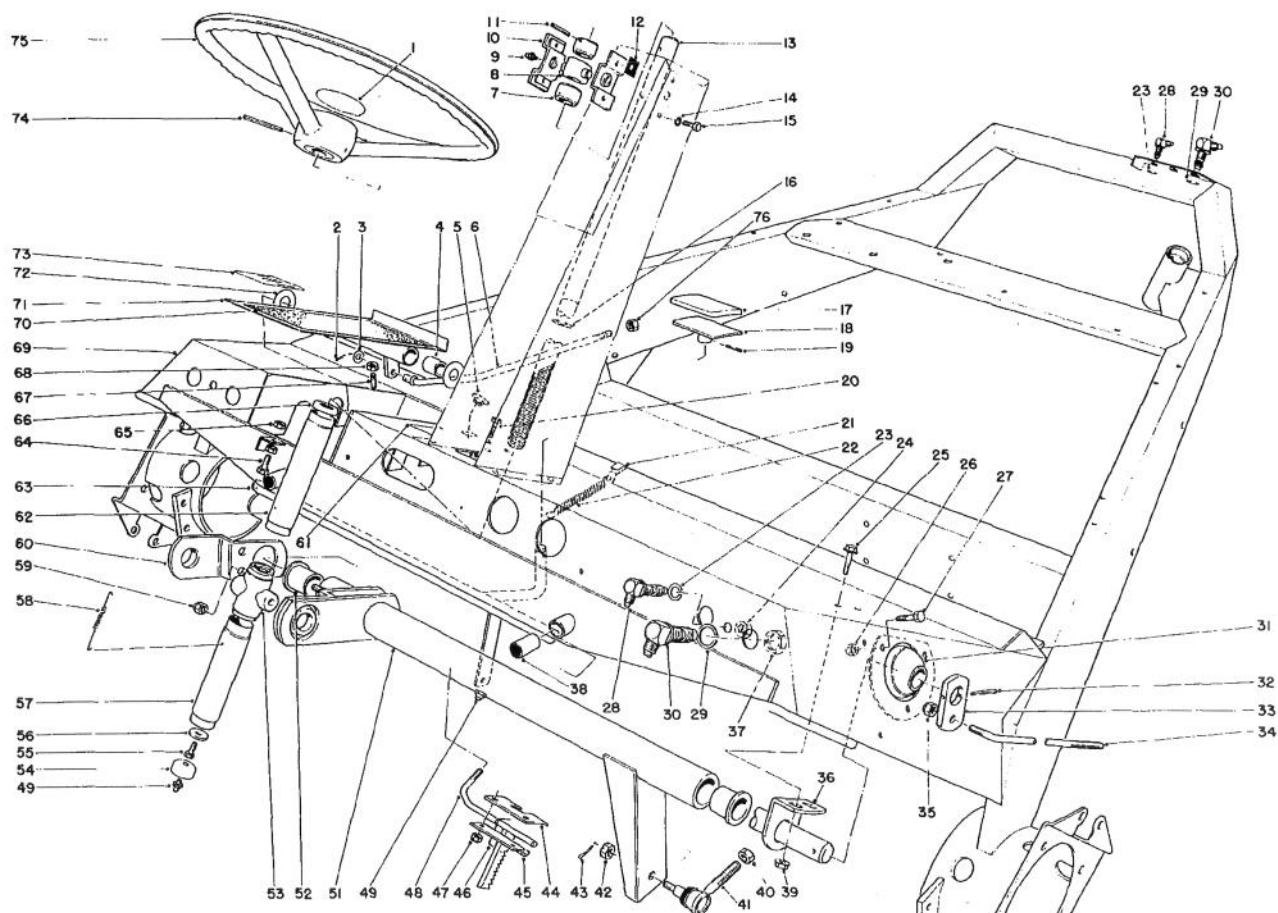
Ref. No.	Part No.	Description	No. Used	Ref. No.	Part No.	Description	No. Used
1	29-0500	Front Shroud	1	24	27-7310	Decal Refueling	1
2	18-2180	Decal	1	25	323-4	Capscrew	14
3	29-0640	Trim	1	26	3296-39	Locknut	10
4	29-0580	Hydraulic Reservoir	1	27	29-2130	Cover Rear	1
5	29-0630	Felt Strip	3	28	322-1	Capscrew	4
6	3253-21	Lockwasher	6	29	237-102	Grommet	1
7	323-34	Capscrew	2	33	36-6220	Cowl	1
8	29-0590	Filler Screen	1	34	27-6630	Trim Hood	2
10	36-4950	Cap	1	35	29-2380	Pad Floor Plate	1
11	11-6350	Decal — Oil	1	36	29-2370	Floor Plate	1
12	32140-43	Machine Screw	6	37	3234-11	Flange Screw	4
13	249-21	Latch	3	38	32128-29	Flange Locknut	4
14	3296-2	Locknut	6	39	29-0830	Strap	1
15	237-103	Grommet	1	40	321-3	Capscrew	2
16	29-2270	Seat Support	1	41	29-0610	Strap — Hydraulic Tank	2
17	29-8720	Decal — Cowl	1	42	3296-42	Locknut	4
18	24-9740	Cover — Battery Access	1	43	321-6	Capscrew	2
19	32103-2	Wing Nut	1	44	29-8710	Decal Front Shroud	1
20	29-0780	Cover Tower	1	45	29-0620	Felt Strip	2
21	3234-4	Hex Flange Screw	3	*	2410-45	Cap Plug	1
22	29-0650	Tower	1	46	29-9060	Decal Backlapping	1
23	20-4690	Decal	1				



## COVER TOP OUTLET AND DISCHARGE LOUVER

Ref. No.	Part No.	Description	No. Used
1	36-6160	Insulation — Outlet Duct	1
2	36-6200	Cover Top Outlet	1
3	3256-24	Flat Washer	24
4	323-4	Capscrew	16
5	321-3	Capscrew	4
6	29-2410	Decal — Caution	1
7	28-1530	Decal — Hot Surface	1

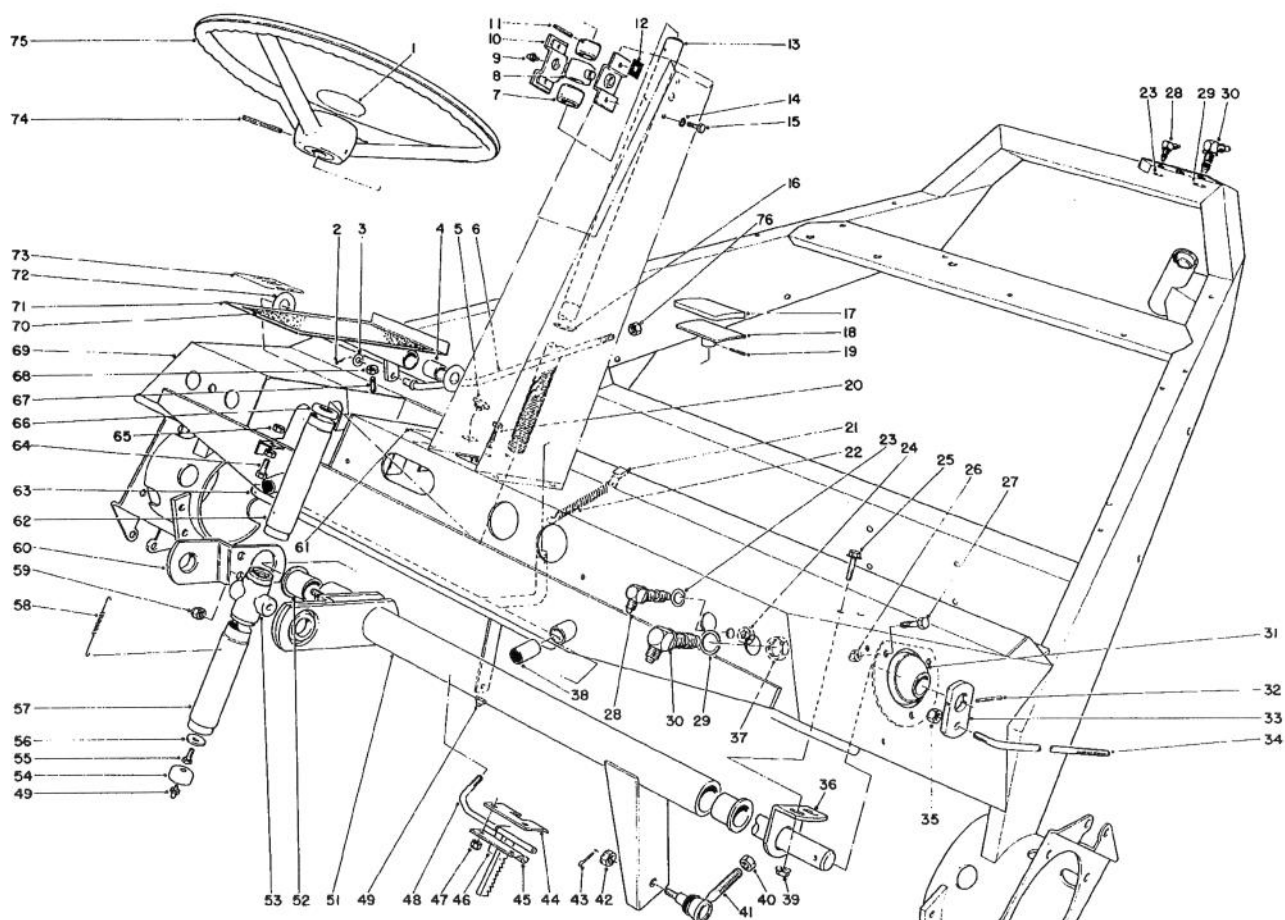
Ref. No.	Part No.	Description	No. Used
8	36-6210	Retainer — Insulation	1
9	3296-39	Locknut	8
10	36-5980	Discharge Louver	1
11	3253-21	Lockwasher	8
12	36-5990	Hinge Assembly	2
13	36-6000	Spacer Hinge	4
14	3296-42	Locknut	4



## STEERING WHEEL AND TRANSFER ASSEMBLY

Ref. No.	Part No.	Description	No. Used
1	24-2090	Cap — Steering Wheel	1
2	3272-11	Cotter Pin	1
3	3256-26	Flat Washer	1
4	256-202	Bushing	2
5	32141-111	Adjusting Nut	1
6	29-1360	Link Pedal	1
7	28-3940	Collar Steering Shaft	2
8	37-1100	Bearing Steering Shaft	1
9	302-16	Grease Fitting	1
10	29-0750	Bearing Support	2
11	32121-31	Roll Pin	2
12	29-0770	Shim Steering	A/R
13	29-0670	Steering Shaft	1
14	3253-21	Lockwasher	4
15	323-34	Capscrew	4
16	32151-48	E-Ring	1
17	7-3900	Foot Pad	1
18	27-2210	Foot Pedal Brake	1
19	32121-45	Roll Pin	1
20	321-4	Capscrew	2
21	29-0980	Clip Spring	1
22	5-1706	Spring	1
23	3253-6	Lockwasher	3

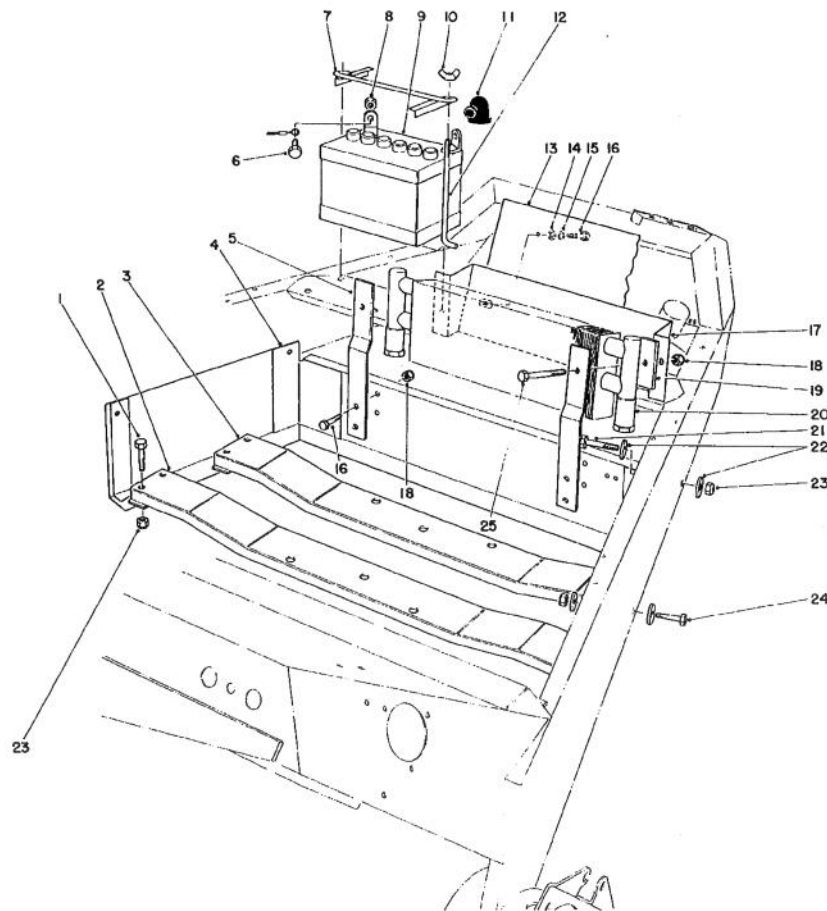
Ref. No.	Part No.	Description	No. Used
24	3220-4	Jam Nut	3
25	3234-11	Flange Screw	2
26	3296-29	Locknut	6
27	322-3	Capscrew	6
28	353-618	45° Bulk Head Fitting	3
29	3253-16	Lockwasher	6
30	353-619	45° Bulk Head Fitting	6
31	29-0940	Center Flange Bearing	2
32	32121-35	Roll Pin	2
33	29-0960	Lever Brake	2
34	29-0970	Rod Brake	2
35	3296-4	Locknut	2
36	29-0950	Bracket — Brake Shaft	1
37	3220-7	Jam Nut	6
38	19-9750	Bushing Assembly	2
39	32128-29	Flange Locknut	2
40	3220-5	Nut	1
41	21-0140	Socket Assembly R.H.	1
42	32136-4	Slotted Nut	1
43	3272-6	Cotter Pin	1
44	10-7880	Parking Brake Hinge Upper	1
45	10-7890	Parking Brake Hinge Lower	1
46	10-8140	Spring	1



## STEERING WHEEL AND TRANSFER ASSEMBLY (Continued)

Ref. No.	Part No.	Description	No. Used
47	3296-42	Locknut	2
48	10-7850	Parking Brake Latch	1
49	302-5	Grease Fitting	2
51	29-0890	Transfer Tube (Incl. Ref. #52)	1
52	256-148	Flange Bushing	2
53	37-0500	Follower — Steering	1
54	29-0720	Plug	1
55	321-2	Capscrew	1
56	29-0730	Washer	1
57	29-0700	Sleeve Lower	1
58	29-0740	Spring	2
59	3296-39	Locknut	2
60	29-0910	Arm Steering Follower	1
61	27-2830	Decal — Parking Brake	1

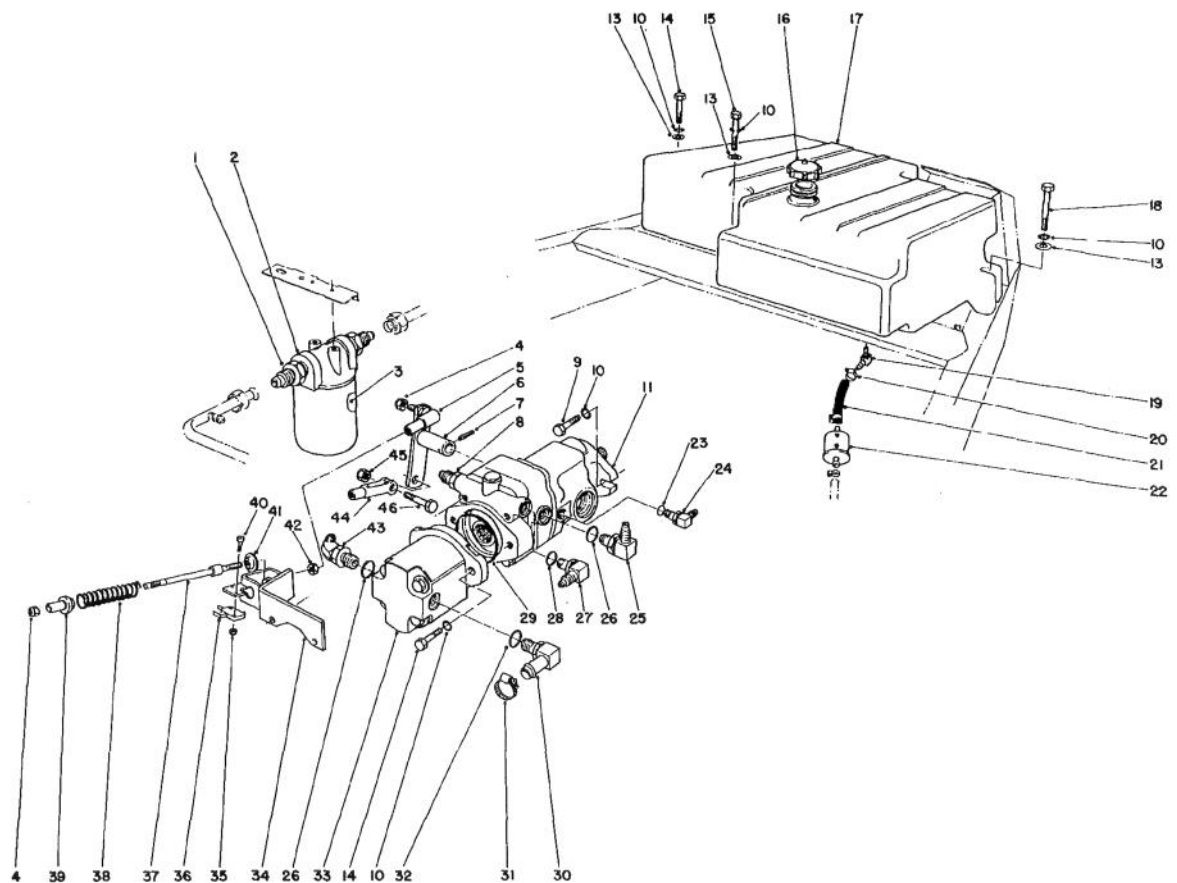
Ref. No.	Part No.	Description	No. Used
62	29-0710	Sleeve — Upper	1
63	29-0790	Brake Shaft	1
64	322-6	Capscrew	1
65	3217-6	Nut	2
66	253-84	Seal	1
67	29-0990	Set Screw	1
68	3217-7	Nut	1
69	29-0110	Frame (Incl. Ref. #38)	1
70	29-1000	Pad Pedal	1
71	29-0850	Pedal (Incl. Ref. #4)	1
72	29-0930	Washer	2
73	29-2390	Decal — Traction Pedal	1
74	32121-10	Roll Pin	1
75	25-6260	Steering Wheel	1
76	3220-5	Jam Nut	1



## BATTERY AND OIL COOLER ASSEMBLY

Ref. No.	Part No.	Description	No. Used
1	323-8	Capscrew	8
2	29-4240	Front Motor Mount	1
3	29-4270	Rear Motor Mount	1
4	29-3230	Motor Support Pan	1
5	29-1990	Bracket Cooler	2
6	321-3	Capscrew	2
7	36-4930	Battery Clamp	1
8	3296-42	Locknut	2
9	29-9870	Battery	1
10	32103-12	Wing Nut	2
11	218-331	Battery Boot	1
12	7-3328	Battery Bolt	2
13	36-5550	Plate — Cooler Guard	1

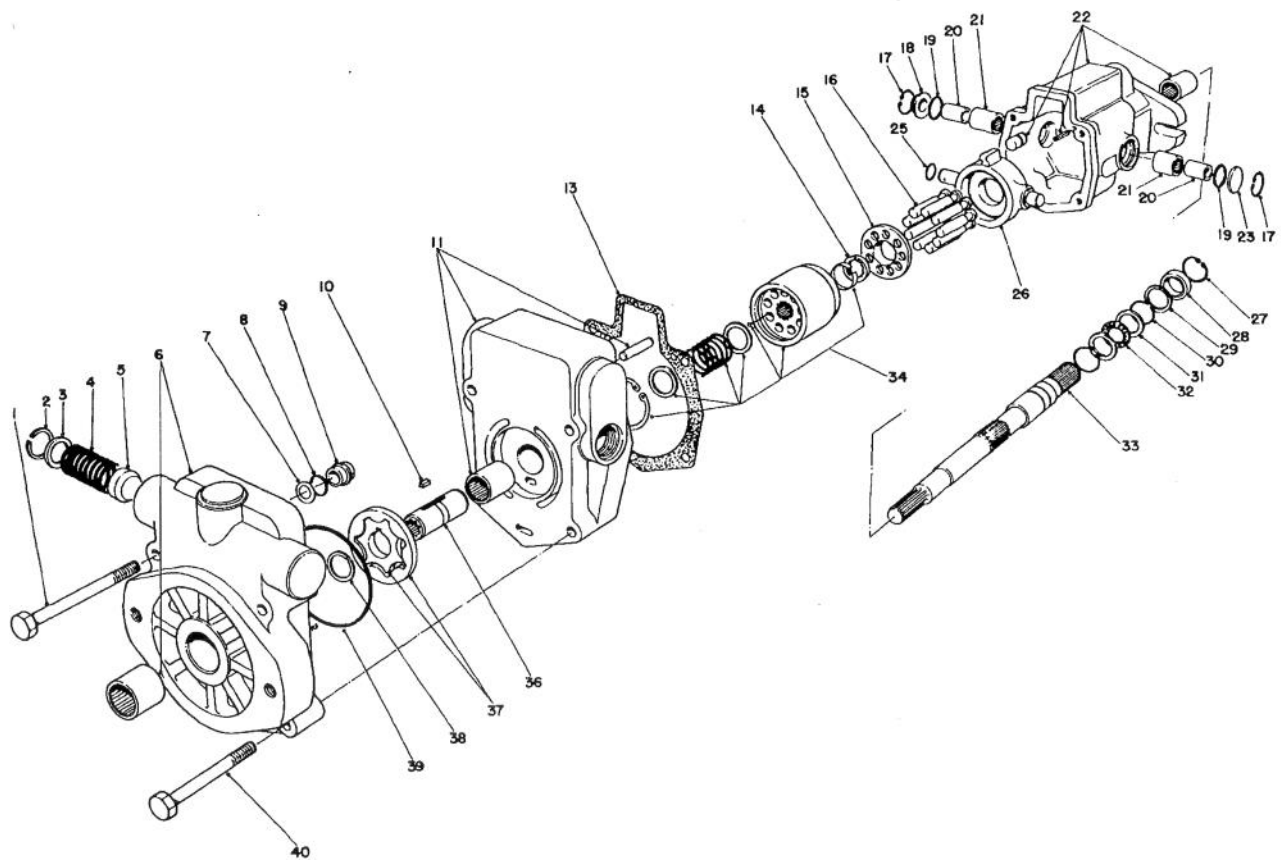
Ref. No.	Part No.	Description	No. Used
14	3256-23	Flat Washer	2
15	3253-4	Lockwasher	2
16	322-3	Capscrew	6
17	36-5540	Cooler Guard	1
18	3296-29	Locknut	6
19	29-1980	Strap — Cooler	2
20	22-7320	Oil Cooler	1
21	323-20	Capscrew	2
22	29-8970	Washer	8
23	3296-39	Locknut	12
24	323-14	Capscrew	2
25	322-9	Capscrew	2



## PISTON PUMP AND GAS TANK ASSEMBLY

Ref. No.	Part No.	Description	No. Used
1	353-542	Straight Fitting	2
2	21-5550	Filter & Head Assy. (Incl. #3)	1
3	23-9740	Filter Element	1
4	3296-6	Locknut	2
5	27-9370	Ball Joint	1
6	29-4220	Pump Lever	1
7	32121-24	Roll Pin	1
8	353-433	Straight Fitting	1
9	323-7	Capscrew	2
10	3253-21	Lockwasher	7
11	29-1300	Piston Pump	1
13	3256-4	Flat Washer	3
14	323-8	Capscrew	3
15	323-10	Capscrew	1
16	10-7950	Gas Cap	1
17	29-2100	Gas Tank	1
18	323-12	Capscrew	1
19	353-536	90° Fitting	1
20	2412-36	Hose Clamp	3
21	18-1530	Hose Fuel Line	1
22	18-1520	Fuel Filter	1
23	237-42	O-Ring	1

Ref. No.	Part No.	Description	No. Used
24	353-374	90° Fitting	1
25	353-370	90° Fitting	1
26	237-80	O-Ring	2
27	353-371	90° Fitting	1
28	237-79	O-Ring	1
29	237-99	O-Ring	1
30	29-1560	90° Fitting	1
31	2412-3	Hose Clamp	2
32	237-81	O-Ring	1
33	29-1330	Gear Pump	1
34	29-4300	Bracket Equalizer	1
35	3296-52	Locknut	4
36	27-9380	Switch — Traction	2
37	27-9350	Rod — Equalizer	1
38	27-9330	Spring Compression	1
39	27-9320	Retain — Spring Bottom	1
40	3290-404	Machine Screw	4
41	27-9340	Retainer — Spring Top	1
42	3220-3	Jam Nut	1
43	353-427	45° Fitting	1
44	282-11	Shackle	1
45	3296-23	Locknut	1
46	325-9	Capscrew	1



## PISTON PUMP NO. 29-1300

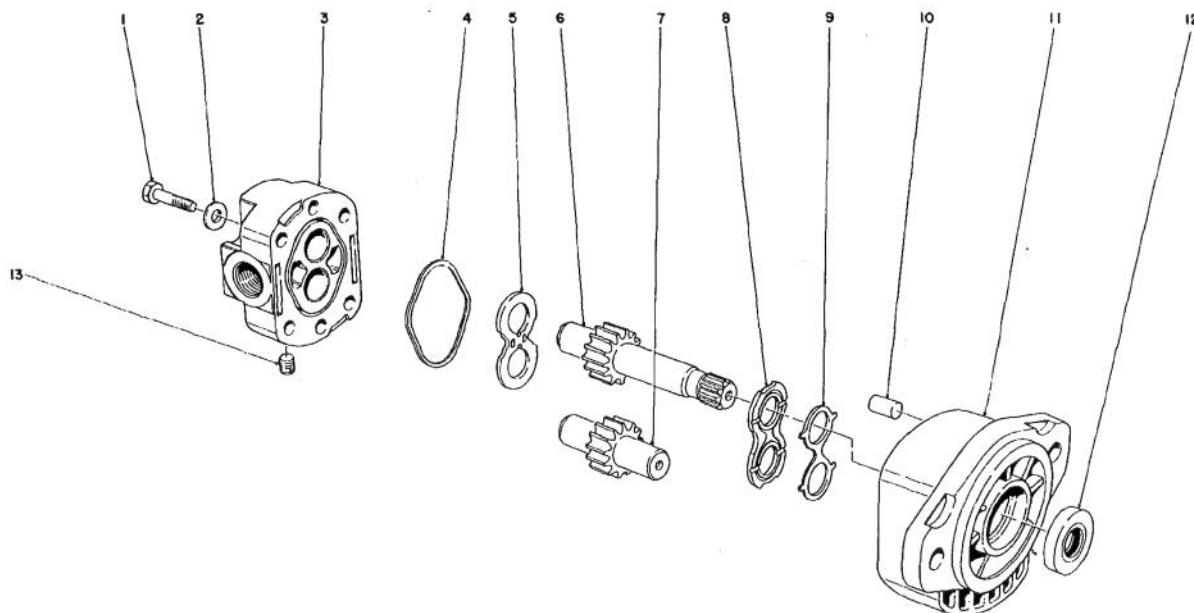
Ref. No.	Part No.	Description	No. Used
1	322-19	Capscrew	2
2	32151-54	Retaining Ring	1
3	33-5010	Washer	1
4	33-5000	Spring	1
5	33-4990	Poppet	1
6	33-5020	Charge Pump Adaptor Assembly (Incl. Ref. # 2-5)	1
7†		Washer Backup	1
8†		O-Ring	2
9	33-4970	Check Valve Assembly (Incl. Ref. # 7-8)	2
10	33-4960	Key	1
11	33-4940	Back Plate Assembly	1
13†		Housing Gasket	1
14	33-4880	Pivot	1
15	33-4870	Spider	1
16	33-5030	Piston Assembly	1
17	32120-74	Retaining Ring	2
18	33-3760	Sleeve Cover	1
19†		O-Ring	2
20	33-3750	Inner Race	2
21	252-95	Needle Bearing	2

Ref. No.	Part No.	Description	No. Used
22	33-3740	Housing Assembly	1
23	33-3770	Trunnion Cover	1
25†		O-Ring	1
26	33-3780	Cam Plate	1
27	32151-13	Retaining Ring	1
28†		Shaft Seal	1
29	33-3720	Washer	1
30	32151-29	Retaining Ring	2
31	252-71	Thrust Race	2
32	252-66	Thrust Bearing	1
33	33-3730	Drive Shaft	1
34	33-4890	Piston Block Assembly	1
36	33-4950	Coupler	1
37	33-4900	Gerotor & Coupler Assembly (Incl. Ref. #10, 36 & 38)	1
38†		Retaining Ring Spiral	2
39†		O-Ring	1
40	322-20	Capscrew	2
*	33-4920	Seal Repair Kit (Incl. Ref. #2, 7-8, 13, 17, 19, 25, 27-28, 30, 38 and 39)	1

\*Not Illustrated

†Items only available in Seal Repair Kit 33-4920





## GEAR PUMP NO. 29-1330

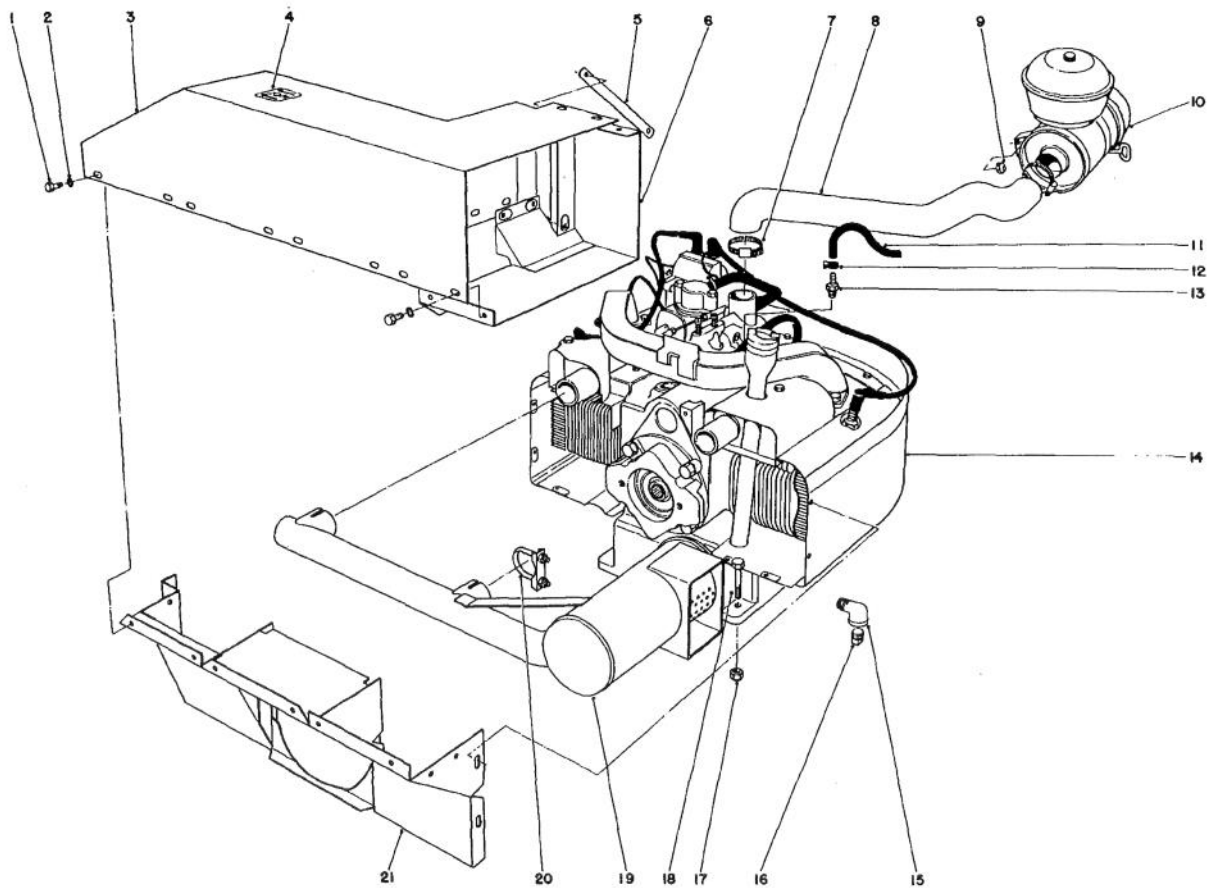
Ref. No.	Part No.	Description	No. Used
1	323-9	Capscrew	4
2	33-1490	Washer	4
3	33-1110	Cover — Side Port	1
4†		Gasket — Seal	1
5	33-1130	Thrust Plate	1
6	33-1140	Drive Gear	1
7	33-1150	Driven Gear	1

Ref. No.	Part No.	Description	No. Used
8	33-1160	Wear Plate	1
9†		Pressure Loading Seal	1
10	33-1180	Dowel Pin	2
11	33-1190	Body	1
12†		Shaft Seal	1
13	281-1	Pipe Plug	1
*	33-4910	Seal Repair Kit (Incl. Ref. 4, 9, 12)	1

\*Not Illustrated

†Items only available in Seal Repair Kit No. 33-4910

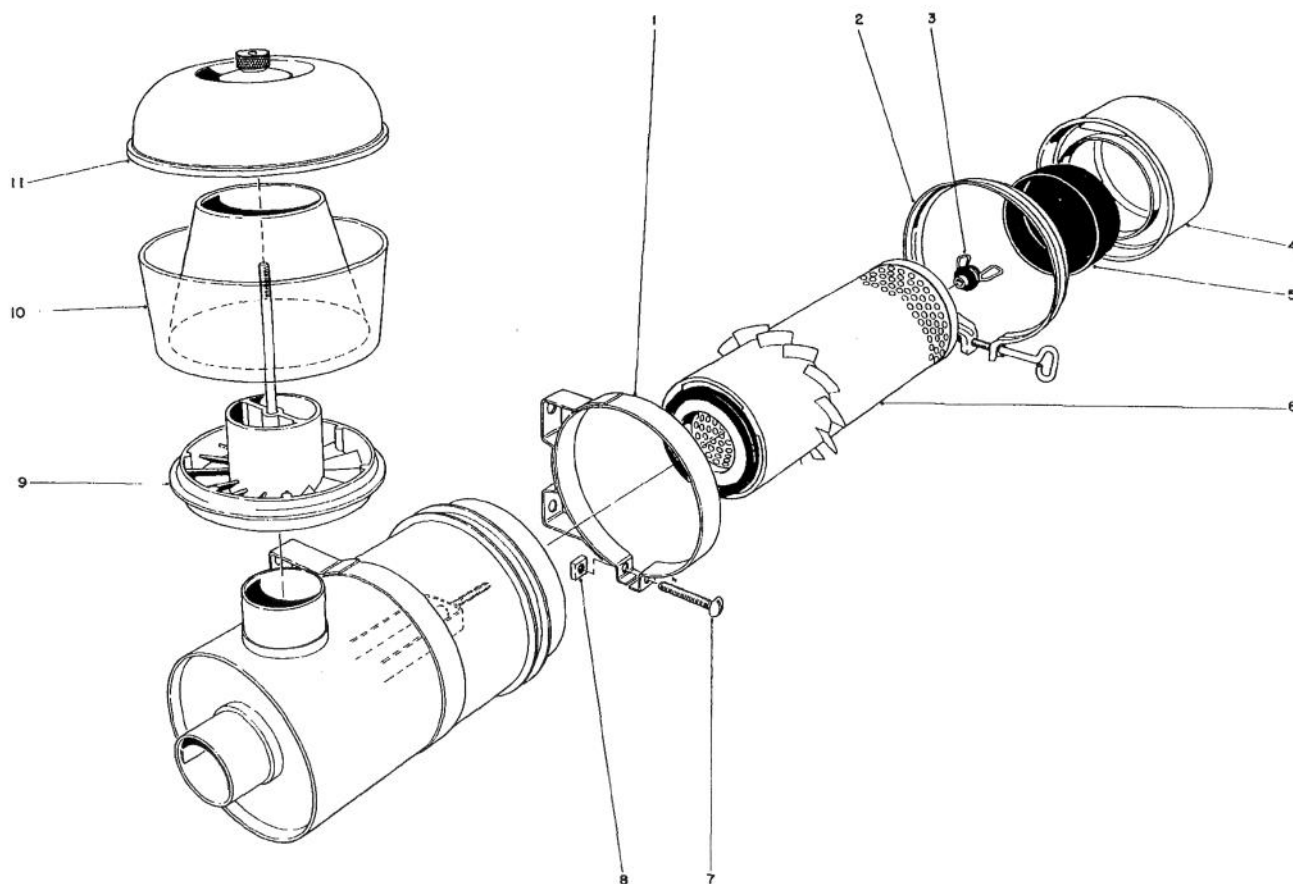




## ENGINE ASSEMBLY

Ref. No.	Part No.	Description	No. Used
1	321-3	Capscrew	23
2	3253-3	Lockwasher	23
3	29-4050	Top Duct	1
4	28-1530	Decal — Hot Surface	1
5	29-4200	Strap Duct	1
6	29-4100	End, Duct — Discharge	1
7	2412-42	Hose Clamp	2
8	29-5230	Hose — Carb. Inlet	1
9	3296-29	Locknut	4
10	29-4960	Air Cleaner Assembly	1
11	29-4110	Hose — Fuel Line	1

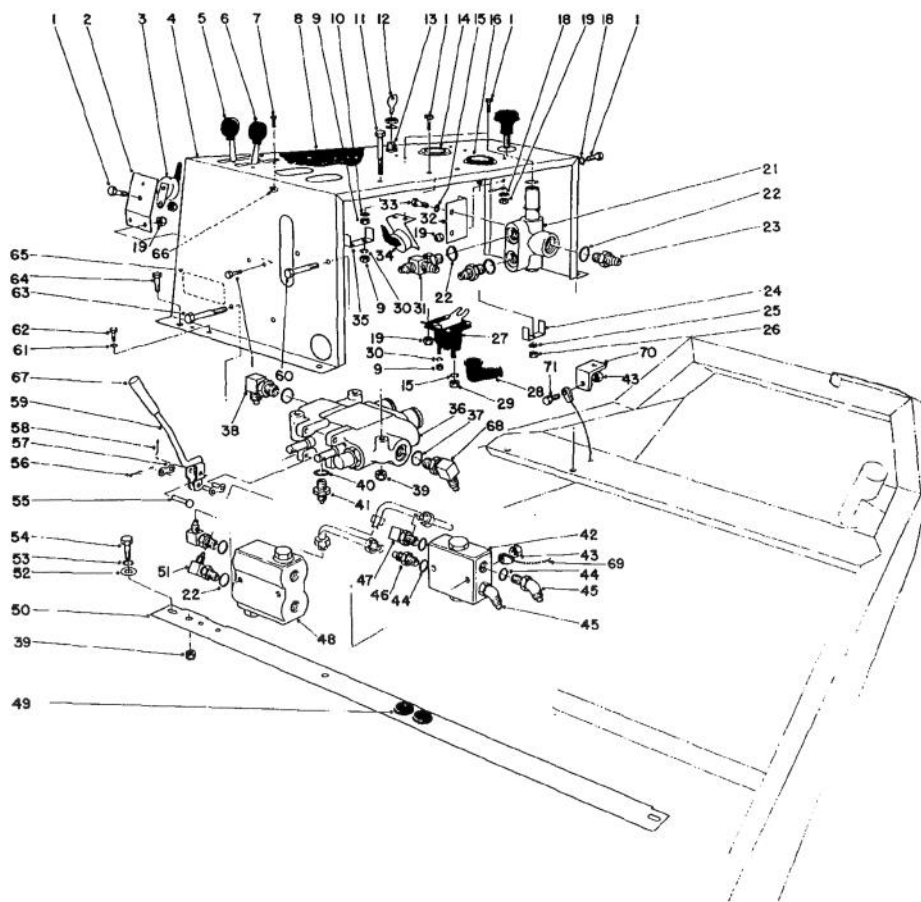
Ref. No.	Part No.	Description	No. Used
12	2412-36	Hose Clamp	1
13	304-73	Hose Connector Barbed	1
14	221-593	Kohler Engine (Model K582-QS Type No. EXPC-36261A)	1
15	2811-8	Street Elbow	1
16	281-5	Pipe Plug	1
17	3296-23	Locknut	4
18	325-6	Capscrew	4
19	29-5220	Exhaust Muffler	1
20	2112-9	Clamp Muffler	2
21	29-4170	Discharge Duct Bottom	1



## AIR CLEANER ASSEMBLY NO. 29-4960

Ref. No.	Part No.	Description	No. Used
1	33-1350	Band Assembly Mounting	2
2	33-1340	Clamp Assembly	1
3	33-1330	Nut Assembly	1
4	33-1320	Cup Assembly	1
5	33-1310	Baffle	1
6	33-1300	Element Assembly	1

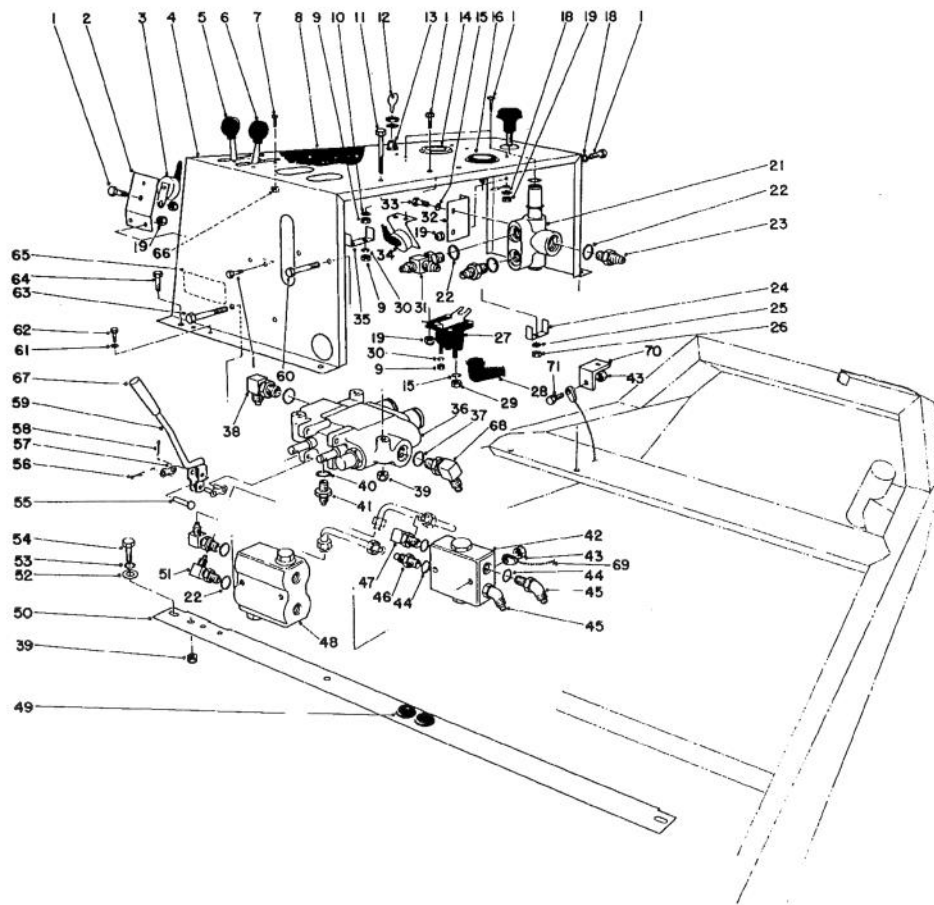
Ref. No.	Part No.	Description	No. Used
7	3258-19	Machine Screw	2
8	32107-11	Nut — Square	2
9	33-1280	Sleeve Assembly	1
10	33-1270	Bowl Clear	1
11	33-1260	Cover Assembly	1



## INSTRUMENT PANEL AND HYDRAULIC VALVES

Ref. No.	Part No.	Description	No. Used
1	321-3	Capscrew	11
2	29-1490	Bracket Switch Mounting Front	1
3	29-1540	Safety Switch	2
4	29-1370	Control Panel	1
5	29-5180	Choke Control	1
6	29-5190	Throttle Control	1
7	3290-134	Machine Screw	4
8	29-2400	Decal Control Panel	1
9	3219-14	Nut	7
10	3256-51	Washer	2
11	323-12	Capscrew	3
12	218-412	Key (Set of 2)	1
13	12-8140	Ignition Switch	1
14	7-6130	Ammeter	1
15	3253-4	Lockwasher	4
16	12-9990	Hour Meter	1
18	3255-7	External Tooth Lockwasher	2
19	3296-42	Locknut	11
21	29-1420	Selector Valve	1
22	237-79	O-Ring	7
23	353-388	Straight Fitting	2
24	33-3700	Mounting Bracket	1

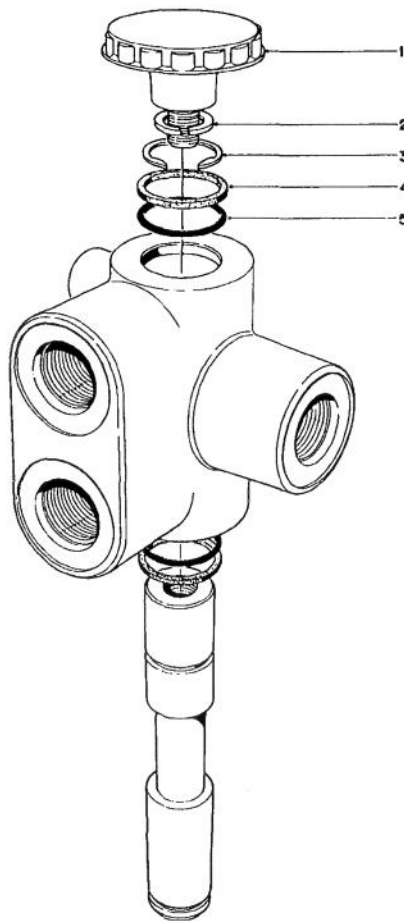
Ref. No.	Part No.	Description	No. Used
25	3255-17	Internal Lockwasher	1
26	3217-26	Nut	1
27	6-1600	Solenoid	1
28	218-331	Battery Boot	1
29	3218-13	Jam Nut	2
30	3253-17	Lockwasher	3
31	353-466	Tee	1
32	29-1390	Bracket Valve	1
33	322-1	Capscrew	2
34	29-1480	Bracket Switch Mounting Rear	1
35	26-2350	Clamp	1
36	29-1450	Spool Valve	1
37	237-81	O-Ring	2
38	353-369	90° Fitting	1
39	3296-39	Locknut	5
40	237-80	O-Ring	4
41	353-433	Straight Fitting	4
42	29-1430	Lock Valve	1
43	3296-29	Locknut	5
44	237-42	O-Ring	4
45	353-212	45° Fitting	2
46	353-192	Straight Fitting	1



## INSTRUMENT PANEL AND HYDRAULIC VALVES (Continued)

Ref. No.	Part No.	Description	No. Used
47	353-511	90° Fitting	1
48	29-1440	Double Relief Cushion Valve	1
49	2410-43	Grommet	2
50	29-1380	Brace Control Panel	1
51	353-371	90° Fitting	4
52	3256-24	Flat Washer	2
53	3253-21	Lockwasher	2
54	323-34	Capscrew	2
55	353-630	Pin	2
56	353-320	Cotter Pin	2
57	353-319	Connecting Link	2
58	353-321	Cotter Pin	2
59	36-4280	Valve Lever	2

Ref. No.	Part No.	Description	No. Used
60	322-10	Capscrew	2
61	3253-3	Lockwasher	2
62	321-3	Capscrew	2
63	322-12	Capscrew	2
64	323-4	Capscrew	4
65	29-8940	Decal — Oil Fill	1
66	32128-17	Flange Nut	4
67	233-39	Knob	2
68	353-676	90° Fitting	1
69	36-4290	Cable	1
70	36-4320	Bracket	1
71	322-5	Capscrew	1

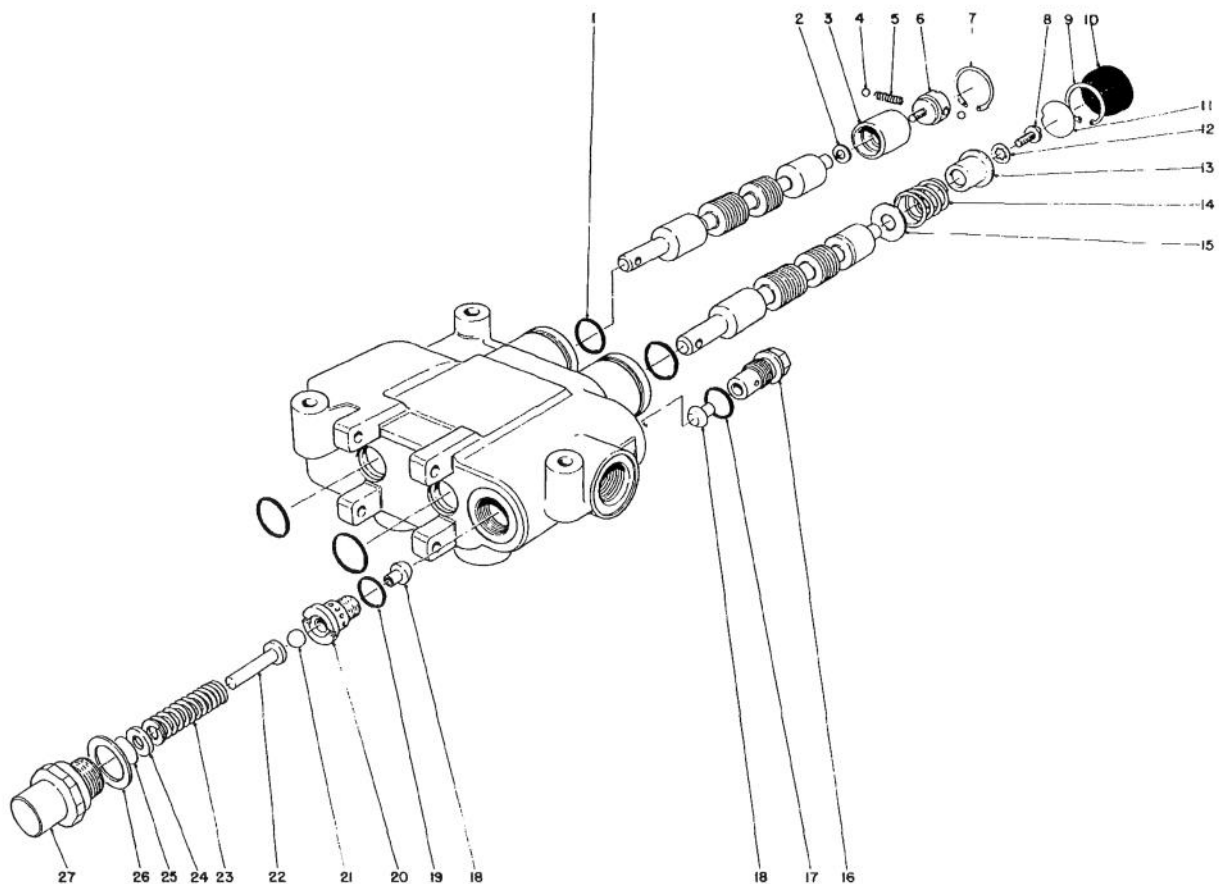


## SELECTOR VALVE NO. 29-1420

Ref. No.	Part No.	Description	No. Used	Ref. No.	Part No.	Description	No. Used
1	233-46	Knob	1	5†	33-1530	O-Ring	2
2	3253-5	Lockwasher	1	*		Seal Repair Kit	1
3	32151-50	Retainer Ring	2			(Incl. Ref. #3-5)	
4†		Washer — Backup	2				

\*Not Illustrated

†Items only available in Seal Repair Kit No. 33-1530

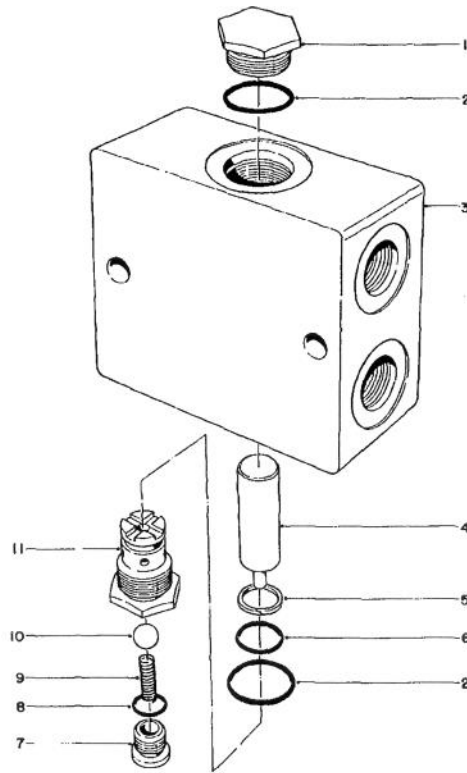


## HYDRAULIC VALVE NO. 29-1450

Ref. No.	Part No.	Description	No. Used
1	237-108	O-Ring	4
2	3253-30	Lockwasher	1
3		Sleeve – Detent	1
4	33-1570	Ball – Detent	2
5	33-1580	Spring – Detent	1
6		Holder – Detent Ball	1
7	32151-52	Ring – Retaining	1
8	3258-2	Screw	1
9	32151-51	Ring Retaining	1
10	33-1600	Bonnet – Rubber	1
11	33-1610	Disc – Stop	1
12	3254-16	Lockwasher	1
13	33-1620	Collar Stop	1
14	33-3270	Spring – Centering	1
15	33-3370	Washer – Stop	1
16		Plug Check	1
17	237-109	Seal-O-Ring	1

Ref. No.	Part No.	Description	No. Used
18	33-3290	Poppet – Check	2
19	237-110	Seal-O-Ring	1
20	33-3300	Seat – Relief	1
21	33-3310	Ball – Relief	1
22	33-3320	Guide Spring	1
23	33-3330	Spring – Relief	1
24	33-3340	Washer Spacer	1
25	33-3350	Shim	A/R
26	33-5050	Gasket	1
27	33-3360	Body Relief	1
*	33-3640	Detent Kit (Incl. Ref. 2-7 & 10)	1
*	33-3660	Neutral Positioner (Incl. Ref. 8-15)	1
*	33-3690	Seal Repair Kit (Incl. Ref. 1, 17, 19 & 26)	1
*	36-3790	Check Plug Kit (Incl. Ref. 16-18)	1

\*Not Illustrated



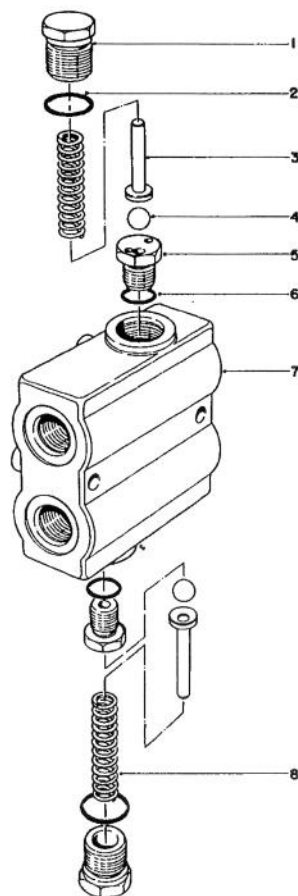
## VALVE LOCK NO. 29-1430

Ref. No.	Part No.	Description	No. Used	Ref. No.	Part No.	Description	No. Used
1	33-1480	Plug	1	9	33-1470	Spring — Check	1
2†		O-Ring	2	10	33-1500	Ball	1
3		Housing	1	11	33-1510	Seat — Lockout	1
4		Piston	1	*	33-1290	Rebuilding Kit (Incl. Ref. #1, 2, 4-11)	1
5†		Washer — Back Up	1	*	33-1390	Seal Repair Kit (Incl. Ref. #2, 5, 6, 8)	1
6†		O-Ring	1				
7	33-1410	Plug	1				
8†		O-Ring	1				

\*Not Illustrated

†Items only available in Seal Repair Kit No. 33-1390





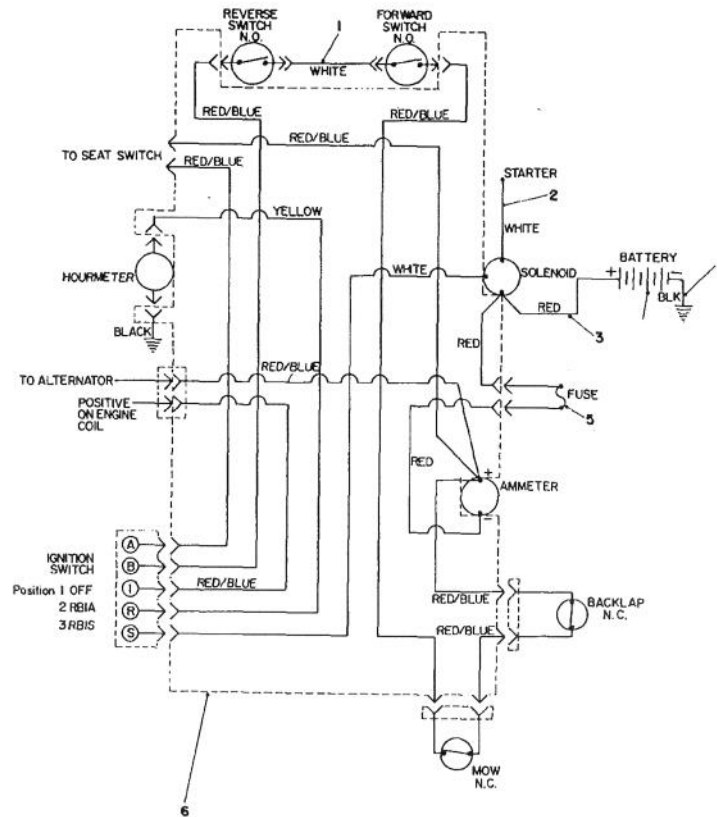
## VALVE CUSHION NO. 29-1440

Ref. No.	Part No.	Description	No. Used
1	33-1430	Cap — Relief	2
2	237-106	O-Ring	2
3	33-1380	Guide Spring	2
4	33-1370	Ball Steel	2
5†	33-1360	Seat — Ball	2

Ref. No.	Part No.	Description	No. Used
6	237-105	O-Ring	2
7		Housing	1
8	33-1420	Spring Compression	2
*	33-5060	†Installation Tool (For Installing Ball Seat)	1

\*Not Illustrated

†Special Tool Required

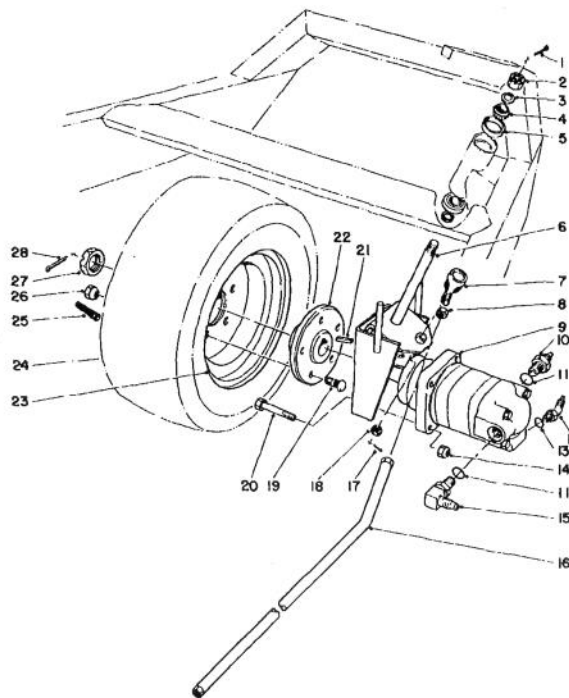


## WIRE SCHEMATIC

Ref. No.	Part No.	Description	No. Used
1	27-9500	Wire Traction Switch	1
2	29-1530	Wire Solenoid to Starter	1
3	29-1520	Wire Battery to Solenoid	1
4	29-1510	Wire Battery to Ground	1

Ref. No.	Part No.	Description	No. Used
5	218-489	Fuse — Holder	1
* †		Fuse 30 amp	1
6	29-4210	Wire Harness	1

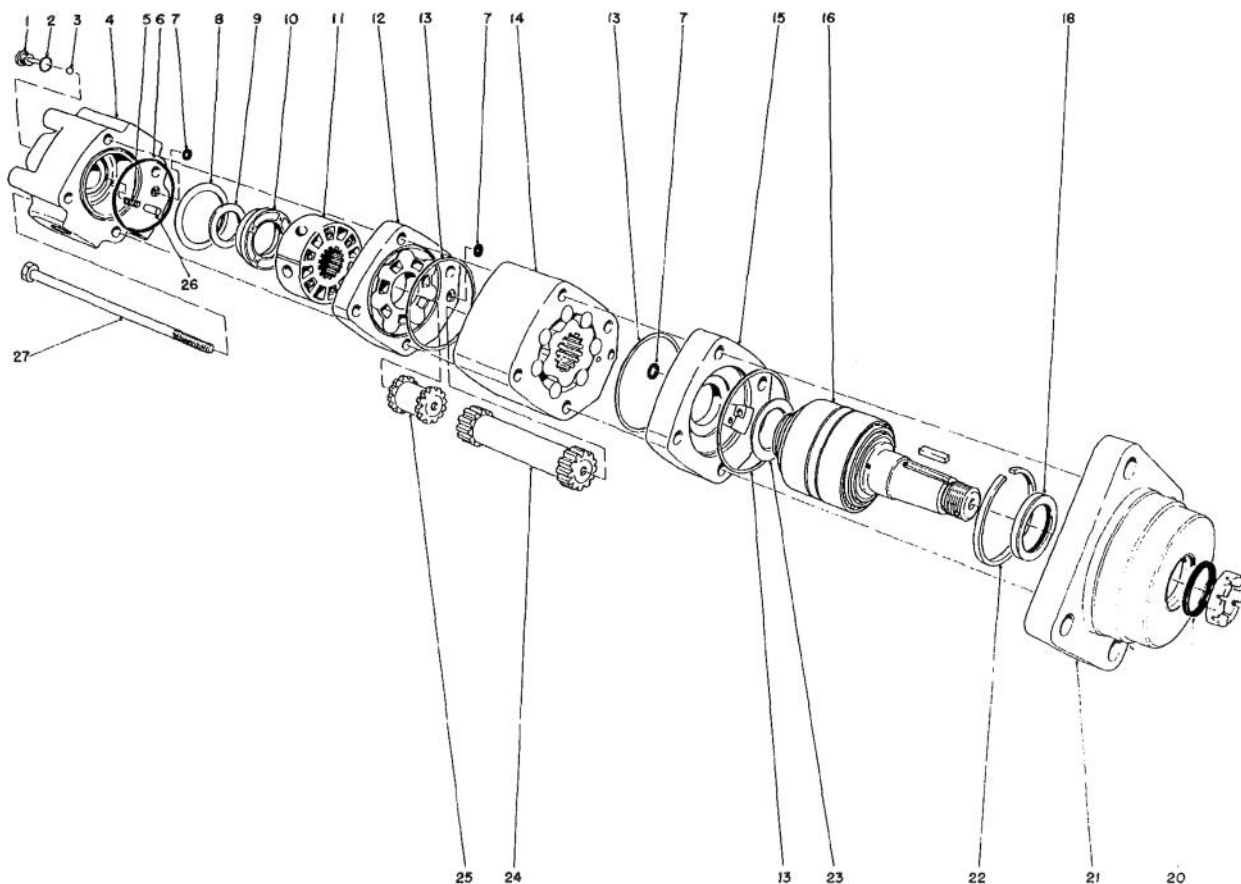
\*Not Illustrated  
†Obtain Locally



## REAR WHEEL AND MOTOR ASSEMBLY

Ref. No.	Part No.	Description	No. Used
1	3272-37	Cotter Pin	1
2	32136-9	Nut	1
3	18-6320	Washer	2
4	254-70	Cone w/Seal	2
5	254-61	Cup	2
6	29-2000	Spindle	1
7	21-0140	Socket Assembly R.H.	1
8	3220-5	Nut	1
9	36-5690	Motor	1
10	353-433	Straight Fitting	1
11	237-80	O-Ring	2
12	353-431	45° Fitting	1
13	237-78	O-Ring	1
14	3296-23	Locknut	4

Ref. No.	Part No.	Description	No. Used
15	353-426	90° Fitting	1
16	29-2110	Steering Tube	1
17	3272-6	Cotter Pin	1
18	32136-4	Slotted Nut	1
19	242-34	Drive Stud	5
20	325-7	Capscrew	4
21	11-5790	Key	1
22	29-2080	Hub Rear Wheel	1
23	217-107	Rim	1
24	231-87	Tire	1
25	232-35	Valve Stem w/Cap	1
26	23-7270	Nut	5
27	11-5800	Nut	1
28	3272-13	Cotter Pin	1



## REAR WHEEL MOTOR NO. 36-5690

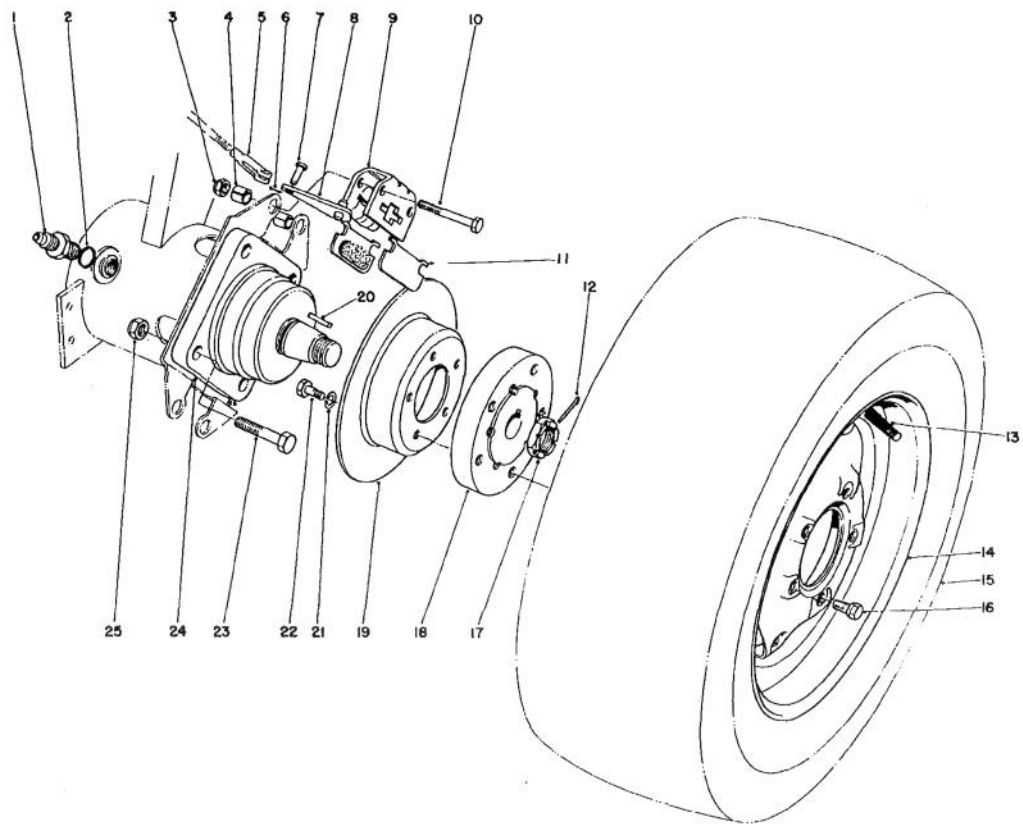
Ref. No.	Part No.	Description	No. Used
1	33-3380	Plug Assembly (Incl. Ref #2)	2
2†		O-Ring	1
3	33-3390	Ball	2
4	33-3400	Valve Housing	1
5	33-3410	Spring	2
6†		Seal	1
7†		Seal	3
8†		Outer Face Seal	1
9†		Inner Face Seal	1
10	33-3440	Balancing Plate	1
11	36-6230	Valve	1
12	36-6240	Valve Plate	1
13†		Seal	2
13‡		Seal	1
14	33-3470	Geroller Assembly	1
15	33-3480	Wear Plate	1

Ref. No.	Part No.	Description	No. Used
16	33-3490	Shaft Sub Assembly (Incl. Ref #22)	1
18‡		Shaft Seal	1
20‡		Dust Seal	1
21	33-3520	Bearing Housing	1
22		Spacer	1
23‡		Shaft Face Seal	1
24	36-6250	Drive	1
25	36-6260	Valve Drive	1
26	33-3570	Pin	2
27	33-5070	Hex Hd. Bolt	4
*	33-5090	Seal Repair Kit (Incl. Ref. #2, 6-9, 13)	1
*	33-5110	Seal Repair Kit (Incl. Ref. #13, 18, 20, 23)	1

\*Not Illustrated

†Items only available in Seal Repair Kit No. 33-5090

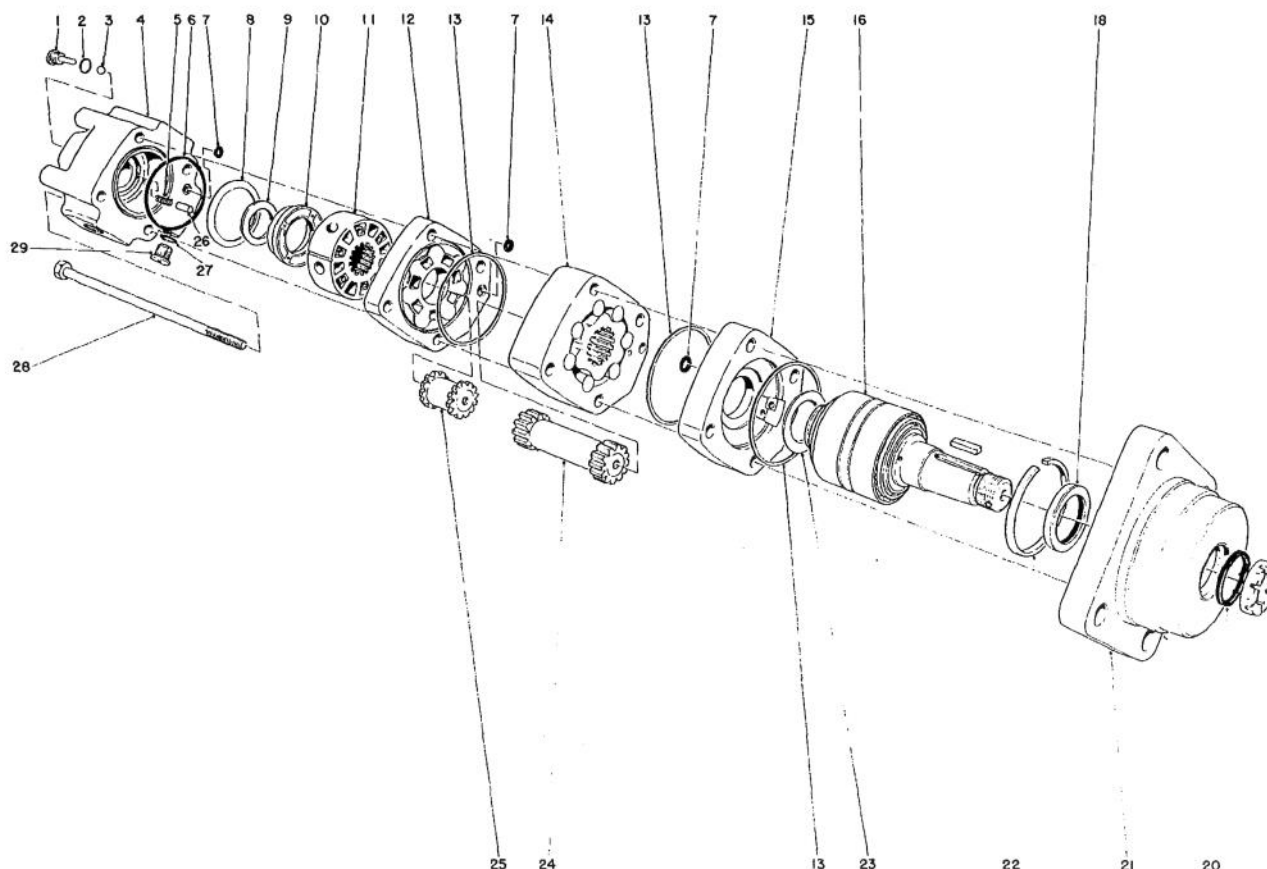
‡Items only available in Seal Repair Kit No. 33-5110



## FRONT WHEEL ASSEMBLY

Ref. No.	Part No.	Description	No. Used
1	353-433	Straight Fitting	4
2	237-80	O-Ring	2
3	3296-39	Locknut	4
4	29-1090	Spacer — Roller Split	4
5	282-2	Yoke	2
6	3272-4	Cotter Pin	2
7	283-26	Clevis Pin	2
8	29-1070	Lever Assembly — Actuating	2
9	29-1060	Bracket — Secondary	2
10	323-13	Capscrew	4
11	29-1080	Stator Assembly	4
12	3272-13	Cotter Pin	2
13	232-27	Valve Stem w/Cap	2

Ref. No.	Part No.	Description	No. Used
14	33-1540	Rim	2
15	231-41	Tire	2
16	217-74	Wheel Bolt	10
17	11-5800	Nut	2
18	29-1020	Hub Front Wheel	2
19	29-1040	Disc Brake	2
20	11-5790	Key	2
21	3253-4	Lockwasher	10
22	322-3	Capscrew	10
23	325-7	Capscrew	8
24	36-5610	Motor	2
25	3296-23	Locknut	8



## FRONT WHEEL MOTOR NO. 36-5610

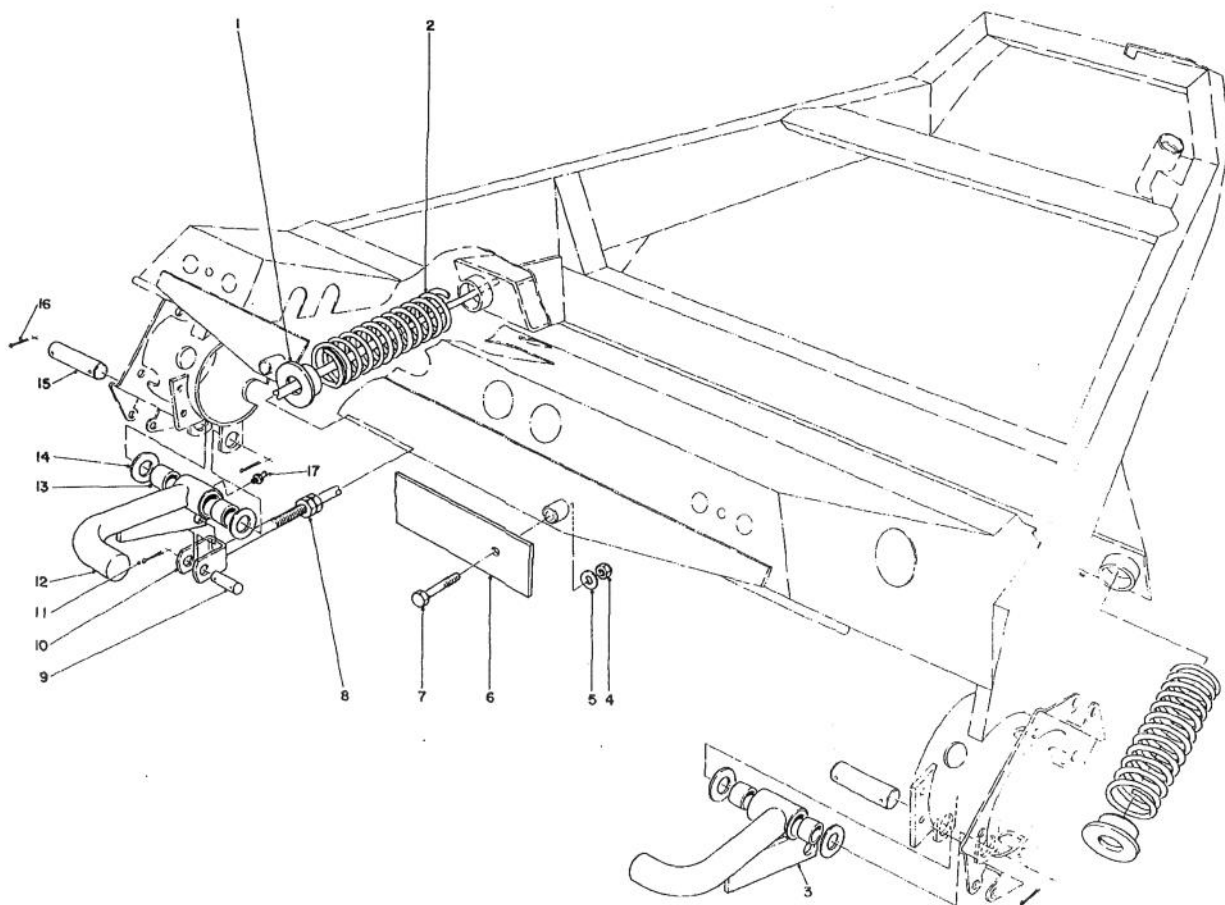
Ref. No.	Part No.	Description	No. Used
1	33-3380	Plug Assembly (Incl. Ref. #2)	2
2†		O-Ring	1
3	33-3390	Ball	2
4	33-3400	Valve Housing	1
5	33-3410	Spring	2
6†		Seal	1
7†		Seal	3
8†		Outer Face Seal	1
9†		Inner Face Seal	1
10	33-3440	Balancing Plate	1
11	36-6230	Valve	1
12	36-6240	Valve Plate	1
13†		Seal	2
13‡		Seal	1
14	33-3590	Geroller Assembly	1
15	33-3480	Wear Plate	1

Ref. No.	Part No.	Description	No. Used
16	33-3490	Shaft Sub Assy (Incl. Ref #22))	1
18‡		Shaft Seal	1
20‡		Dust Seal	1
21	33-3520	Bearing Housing	1
22		Spacer	1
23‡		Shaft Face Seal	1
24	36-6270	Drive	1
25	36-6260	Valve Drive	1
26	33-3570	Pin	2
27	237-115	O-Ring Seal	1
28	33-5080	Hex Hd. Bolt	4
29	33-3580	Plug Assembly (Incl. Ref. #27)	1
*	33-5090	Seal Repair Kit (Incl. Ref. #2, 6-9, 13)	1
*	33-5110	Seal Repair Kit (Incl. Ref. #13, 18, 20, 23)	1

\*Not Illustrated

†Items only available in Seal Repair Kit #33-5090

‡Items only available in Seal Repair Kit #33-5110

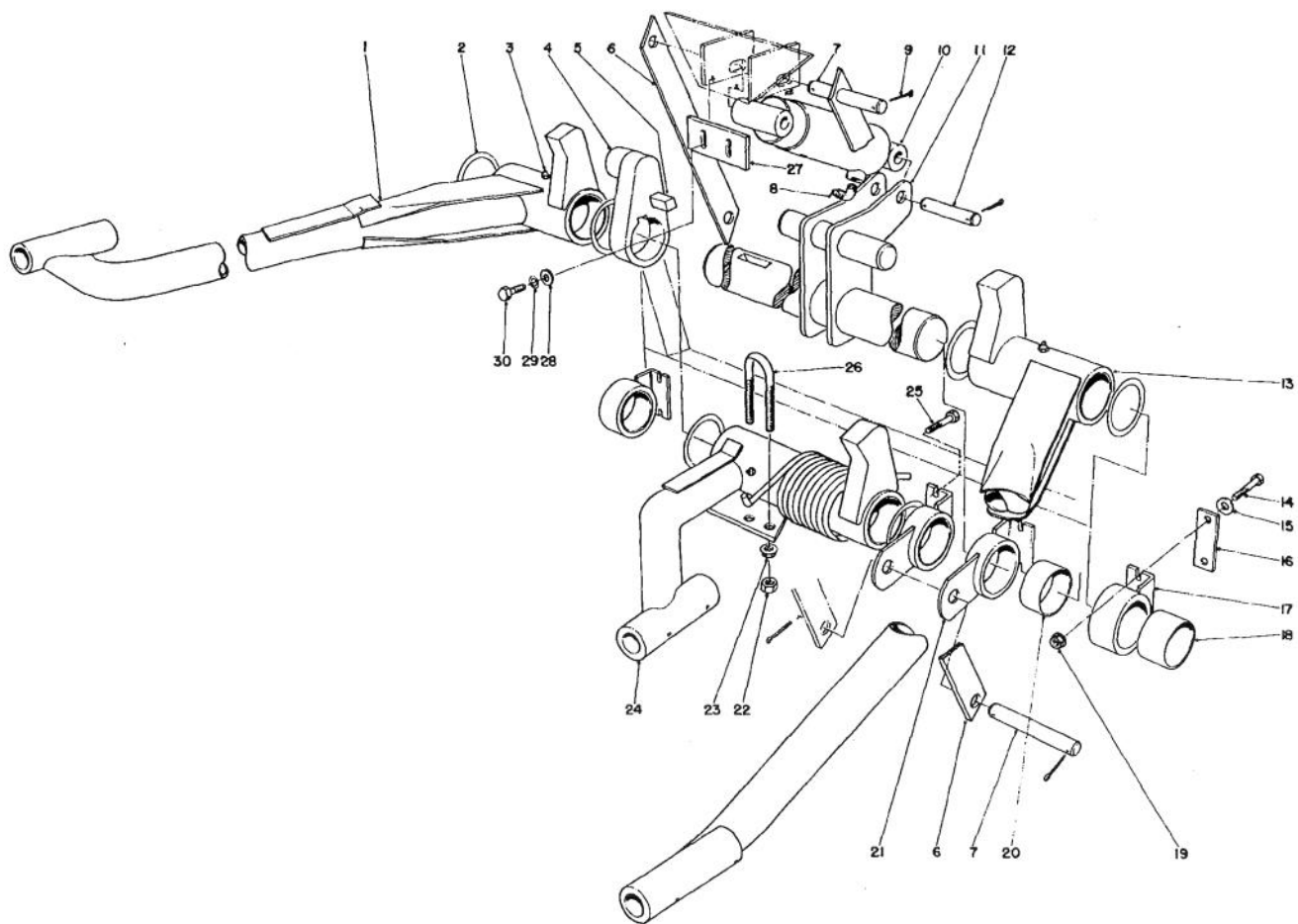


## COUNTERBALANCE ASSEMBLY

Ref. No.	Part No.	Description	No. Used
1	29-5140	Bracket Counterbalance	2
2	20-9420	Spring Compression	2
3	29-5100	Arm Counterbalance L.H. (Incl. Ref. #13 and 17)	1
4	3296-23	Nut	2
5	21-1790	Washer	2
6	36-4920	Wear Plate	1
7	325-10	Capscrew	2
8	3220-7	Jam Nut	4
9	29-5170	Pin Counterbalance	2

Ref. No.	Part No.	Description	No. Used
10	29-5060	Rod — Transfer	2
11	3272-22	Cotter Pin	4
12	29-5090	Arm Counterbalance R.H. (Incl. Ref. #13 and 17)	1
13	256-261	Bushing	4
14	29-2770	Washer Thrust	4
15	29-5160	Pin Pivot	2
16	3272-24	Cotter Pin	4
17	302-5	Grease Fitting	2

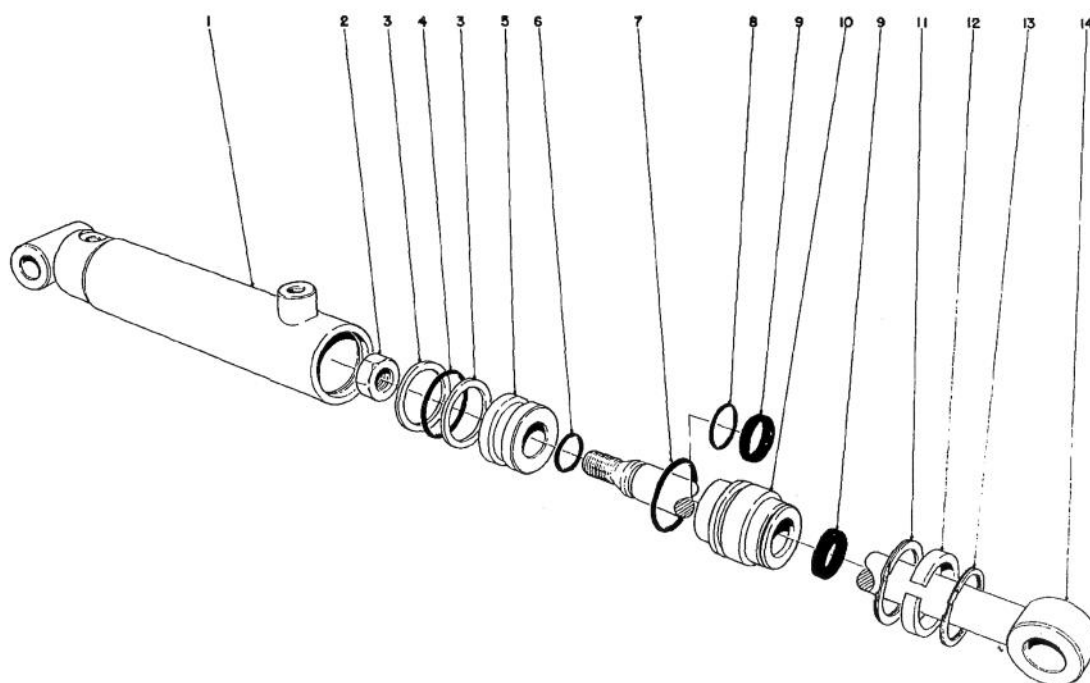




## PUSH ARM ASSEMBLY

Ref. No.	Part No.	Description	No. Used
1	29-2530	R.H. Push Arm (Incl. Ref. #18)	1
2	29-2710	Washer - Thrust	A/R
3	302-5	Grease Fitting	3
4	29-2610	Lift Arm	1
5	29-2600	Key	1
6	29-2660	Support - Lift Cylinder	2
7	29-2680	Pin Lift Cylinder Top	2
8	11-9800	90° Fitting	2
9	3272-22	Cotter Pin	6
10	29-2700	Cylinder	1
11	29-2730	Lift Shaft	1
12	29-2670	Pin Lift Cylinder Lower	1
13	29-2780	L.H. Push Arm (Incl. Ref. #18)	1
14	323-14	Capscrew	6
15	29-8950	Washer	8

Ref. No.	Part No.	Description	No. Used
16	29-8980	Spacer	4
17	29-2570	Bracket Pivot	2
18	29-2520	Bushing	8
19	32128-29	Flange Locknut	8
20	29-3260	Bushing	2
21	29-3240	Bracket - Pivot Tube Center (Incl. Ref. #20)	2
22	3217-7	Nut	2
23	32128-18	Flange Locknut	2
24	29-2470	Center Push Arm (Incl. Ref. #18)	1
25	323-13	Capscrew	2
26	29-2720	U-Bolt	1
27	36-4910	Plate, Adj.	1
28	3256-24	Flat Washer	2
29	3253-21	Lockwasher	2
30	323-4	Capscrew	2



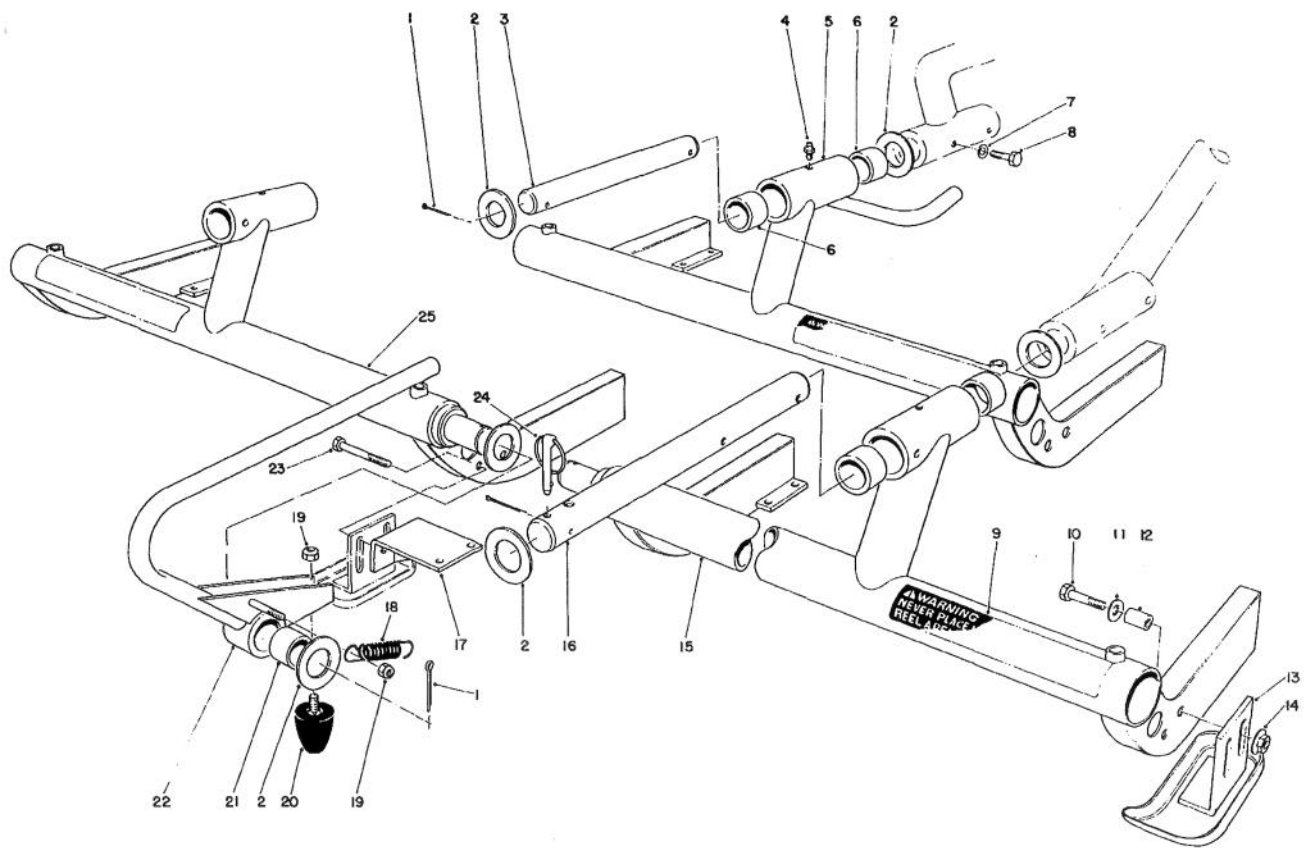
## HYDRAULIC CYLINDER NO. 29-2700

Ref. No.	Part No.	Description	No. Used
1	33-3610	Tube Assembly	1
2	3219-7	Full Nut	1
3†		Washer Backup	2
4†		O-Ring Piston	1
5	33-3630	Piston	1
6†		O-Ring Rod	1
7†		O-Ring Head	1
8†		O-Ring Seal	1

Ref. No.	Part No.	Description	No. Used
9†		Rod Wiper	2
10	33-3680	Head Assembly	1
11†		Lock Ring Head	1
12	33-3650	Spacer	1
13	32151-53	Lock Ring	1
14	33-3670	Rod Assembly	1
*†	33-3620	Seal Repair Kit (Incl. Ref. #3-4, 6-9 & 11)	1

\*Not Illustrated

†Items only available in Seal Repair Kit No. 33-3620

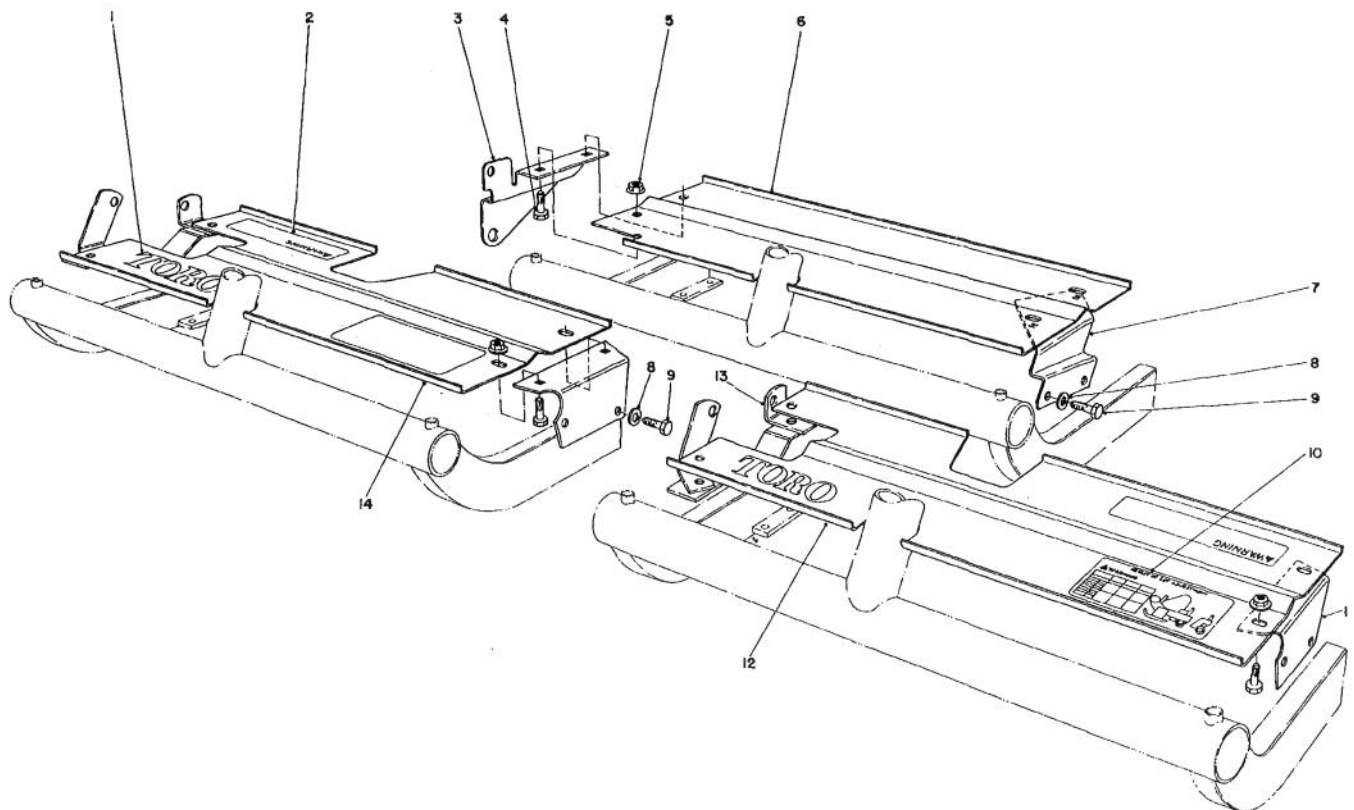


## CARRIER FRAME AND EXTENSION ROD ASSEMBLY

Ref. No.	Part No.	Description	No. Used
1	3272-50	Cotter Pin	5
2	29-2770	Washer Thrust	10
3	29-3150	Shaft Center Pivot	1
4	302-5	Grease Fitting	3
5	36-5510	Cutting Unit Carrier Frame #1 (Incl. Ref. 4 and 6)	1
6	256-261	Bushing	6
7	3253-7	Lockwasher	6
8	325-5	Capscrew	6
9	27-2890	Warning Decal	3
10	323-9	Capscrew	8
11	3256-24	Washer	9
12	29-3200	Spacer	12
13	29-3170	Skid	6
14	3290-357	Flange Nut	12

Ref. No.	Part No.	Description	No. Used
15	36-5520	Cutting Unit Carrier Frame #2 (Incl. Ref. 4 and 6)	1
16	36-5100	Shaft Front Pivot	2
17	36-5430	Bumper Bracket	2
18	36-5590	Extension Spring	2
19	3296-39	Locknut	4
20	26-0070	Rubber Snubber	2
21	256-126	Bushing	2
22	36-5470	Tipper Bar R.H. (Incl. Ref. #21)	1
*	36-5480	Tipper Bar L.H. (Incl. Ref. #21)	1
23	323-10	Capscrew	4
24	36-5110	Ball - Lok Pin	2
25	36-5530	Cutting Unit Carrier Frame #3 (Incl. Ref. #4 and 6)	1

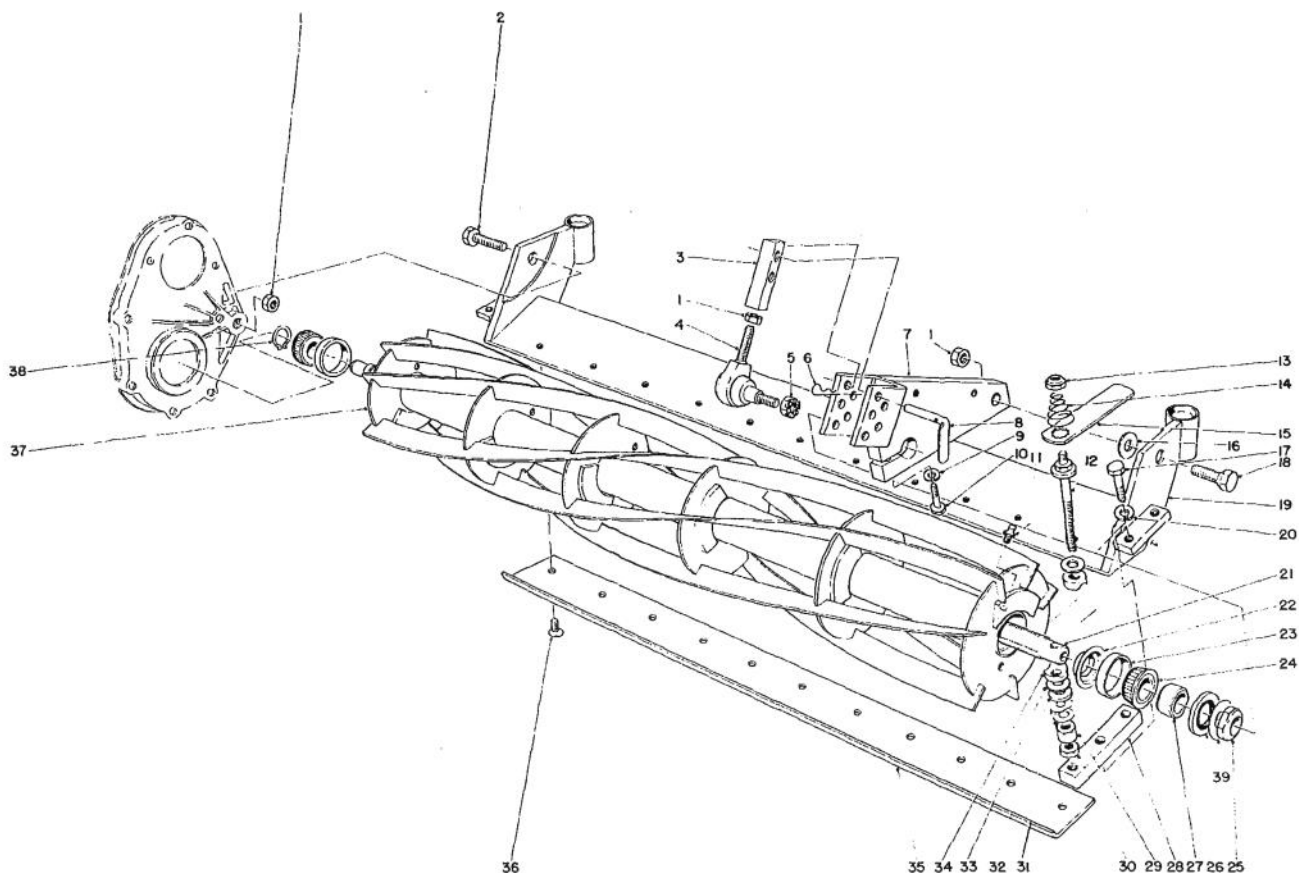
\*Not Illustrated



## GRASS SHIELD ASSEMBLY

Ref. No.	Part No.	Description	No. Used
1	20-4690	Decal — Toro	2
2	27-2890	Decal — Warning	2
3	29-2650	Bracket — Center Shield	1
4	322-3	Capscrew	12
5	32128-13	Flanged Locknut	12
6	29-2920	Grass Shield Center	1
7	29-2890	Bracket — Grass Shield	1

Ref. No.	Part No.	Description	No. Used
8	3253-24	Lockwasher	6
9	322-2	Capscrew	6
10	29-8740	Decal — Height of Cut	2
11	29-2990	Bracket — Grass Shield	2
12	29-2940	Grass Shield — Left Front	1
13	29-2950	Bracket Grass Shield	2
14	29-2930	Grass Shield — Right Front	1



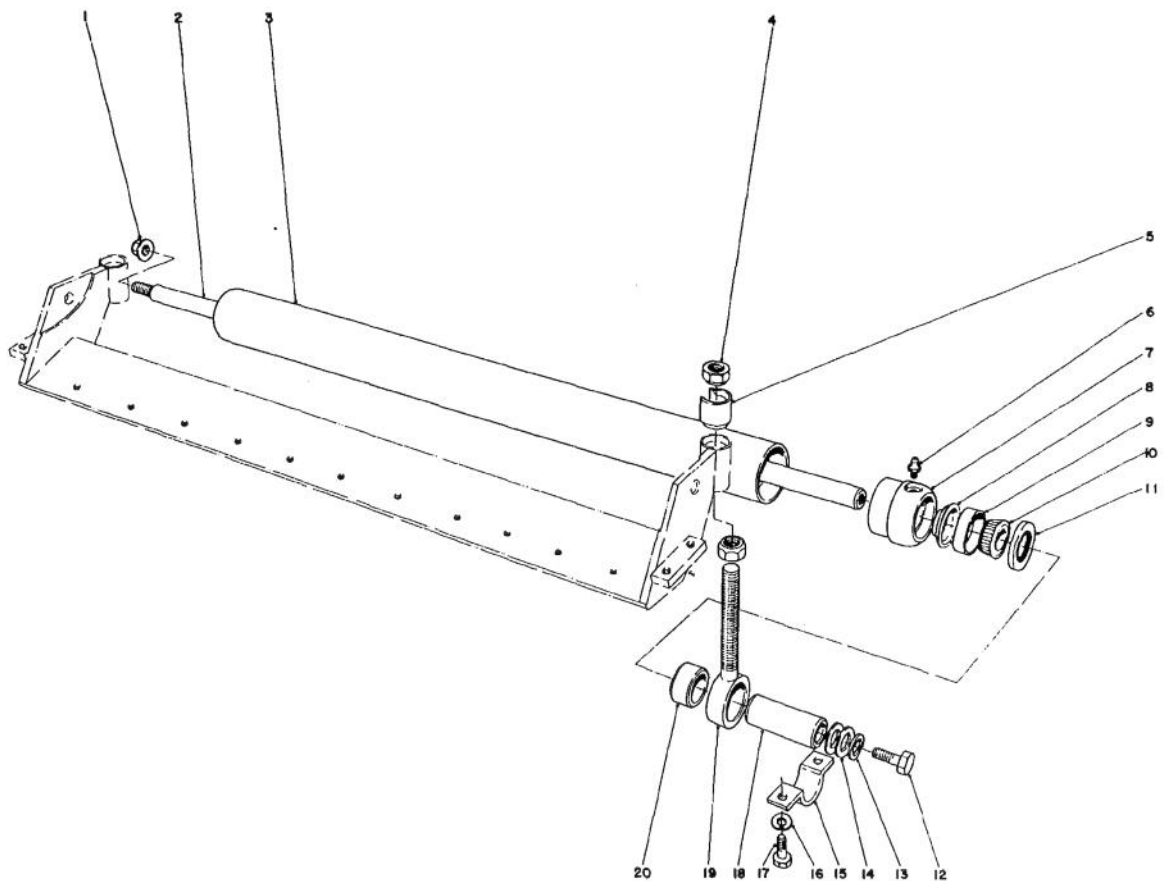
## REEL AND BED BAR ASSEMBLY

Ref. No.	Part No.	Description	No. Used
1	3220-5	Jam Nut	3
2	29-3720	Taper Bolt	1
3	29-3770	Bar Height of Cut	1
4	21-0140	Socket Assembly R.H.	1
5	32136-4	Slotted Nut	1
6	3290-255	Hair Pin Cotter	1
7	29-3680	Reel Side Plate	1
8	29-3780	Pin Height of Cut	1
9	3253-24	Lockwasher	1
10	322-6	Capscrew	1
11	302-5	Grease Fitting	1
12	29-3950	Screw Reel Adjustment	2
13	3296-5	Locknut	2
14	29-3960	Spring — Conical	2
15	29-3980	Wrench — Reel Adjustment	2
16	29-3990	Washer	1
17	323-7	Capscrew	4
18	29-3730	Taper Bolt L.H.	1
19	29-3630	Bed Bar	1
20	3253-21	Lockwasher	4
21	29-3420	Reel Shaft	1
22	29-3440	Grease Retainer	1
23	254-79	Bearing Cup	2
24	254-78	Bearing Cone	2
25	3296-15	Locknut	1

Ref. No.	Part No.	Description	No. Used
26	253-117	Seal	1
27	5-4038	Wear Sleeve	1
28	29-3920	Block — Reel Adjustment	2
29	3219-3	Nut	2
30	3220-3	Jam Nut	2
31	3290-414	Washer — Belleville	4
32	29-3910	Washer Thrust	2
33	251-273	Bearing — Thrust	4
34	29-3930	Washer — Thrust	4
35	29-4020	Bedknife	1
36	3-6462	Screw Special	11
37	33-5040	Complete Reel Assembly (Incl. Ref. #11, 21-27, 38)	1
38	32120-93	Retaining Ring	1
39	37-0230	Seal Protecting Washer	1
*	36-3060	Remote Backlapping Kit	1
*	29-9100	Handle Assembly (Incl. the following)	1
*	36-4310	Brush	1
*	29-9090	Hose Handle	1
*	12-9140	Decal	1
*	29-9080	Handle	1
*	2410-18	Plug	1

\* Not Illustrated

Note: Quantities indicated are for one Cutting Unit.

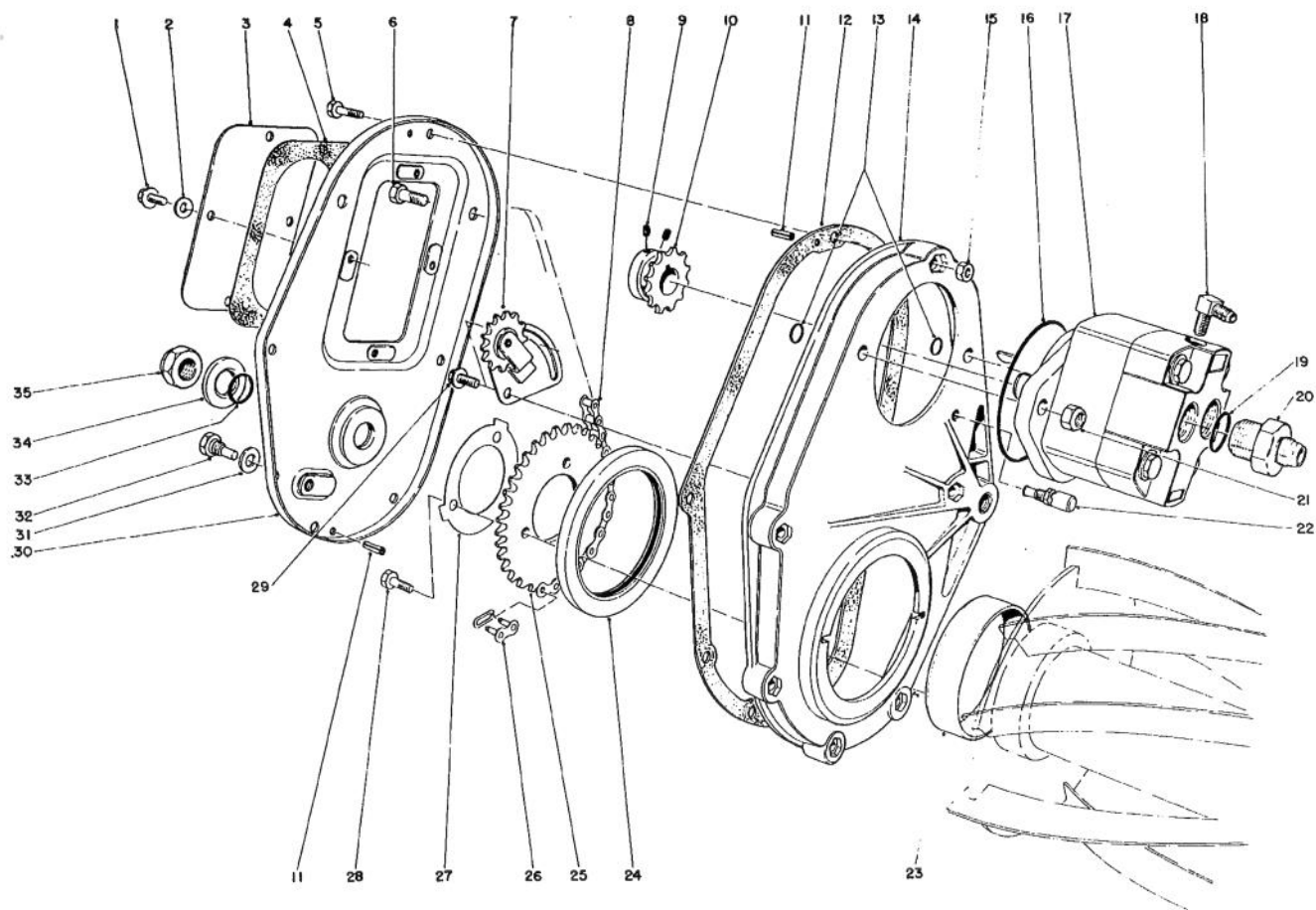


## ROLLER ASSEMBLY

Ref. No.	Part No.	Description	No. Used
1	32128-15	Flange Nut	1
2	29-3850	Roller Shaft	1
3	29-3800	Roller Assembly (Incl. Ref. # 1-3, 6-14 & 18)	1
4	217-104	Taper Nut	4
5	29-3790	Spacer Height of Cut	2
6	302-5	Grease Fitting	2
7	5-4035	End Cap — Roller	2
8	29-3440	Retainer Grease	2
9	254-79	Bearing Cup	2
10	254-78	Bearing Cone	2

Ref. No.	Part No.	Description	No. Used
11	253-117	Seal	2
12	3213-20	Capscrew	1
13	3253-7	Lockwasher	1
14	3256-26	Washer	2
15	29-3940	Clamp Roller	2
16	3253-21	Lockwasher	4
17	323-6	Capscrew	4
18	29-3900	Wear Sleeve Roller	2
19	6-9669	Rod End (Incl. Ref. #20)	2
20	29-3880	Roller Bushing Assembly	2

Note: Quantities indicated are for one Roller Assembly.



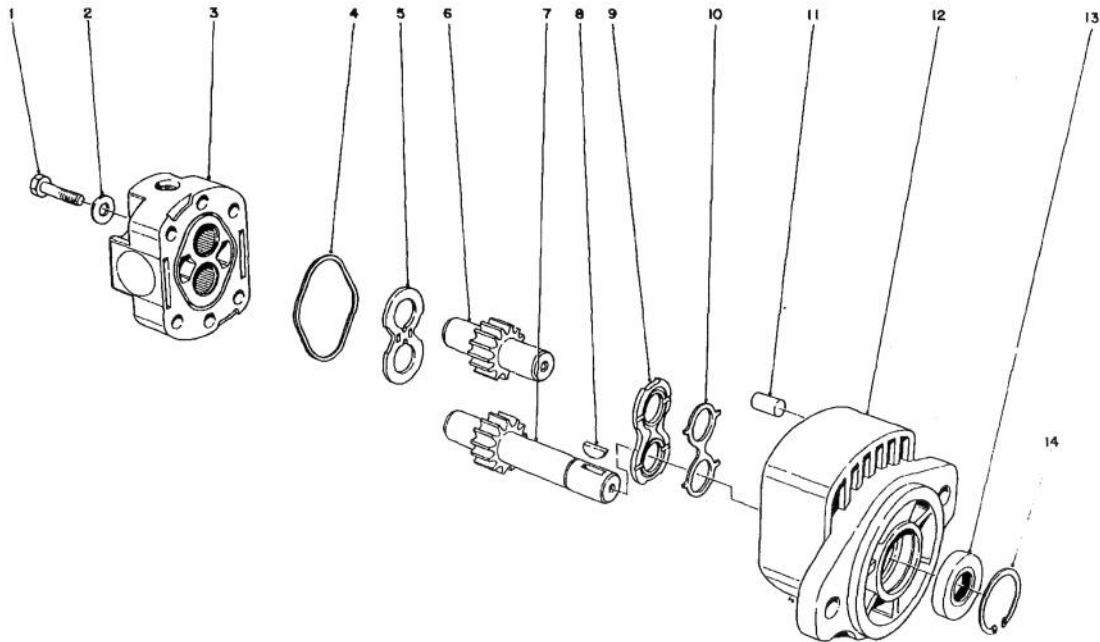
## CHAIN CASE AND GEAR MOTOR ASSEMBLY

Ref. No.	Part No.	Description	No. Used
1	3234-13	Flange Screw	4
2	29-3970	Washer Polyethylene	4
3	29-3600	Inspection Cover	1
4	29-3590	Gasket — Inspection Cover	1
5	321-13	Capscrew	6
6	323-11	Capscrew	2
7	29-3500	Idler Assembly	1
8	29-3490	Roller Chain (Incl. Ref. #26)	1
9	3245-32	Set Screw	2
10	29-3760	Sprocket	1
11	32121-2	Roll Pin	2
12	29-3580	Gasket Chain Case	1
13	237-22	O-Ring	2
14	33-1550	Chain Case	1
15	32153-4	Locknut	6
16	237-99	O-Ring	1
17	29-2690	Hydraulic Motor	1
18	353-622	90° Fitting	1

Ref. No.	Part No.	Description	No. Used
19	237-81	O-Ring	2
20	353-620	Straight Fitting	2
21	3296-39	Locknut	2
22	302-54	Relief Fitting	1
23	29-3710	Wear Ring	1
24	253-141	Seal	1
25	29-3470	Sprocket Driven	1
26	2710-31	Connecting Link	1
27	29-3480	Locking Clip	1
28	321-35	Capscrew	3
29	3234-14	Flange Screw	2
30	29-3550	Cover — Chain Case	1
31	29-4990	Sealing Washer	1
32	29-4030	Plug Fill	1
33	237-58	O-Ring	1
34	29-3610	Washer O-Ring	1
35	3296-15	Locknut	1

Note: Quantities indicated are for one Chain Case Assembly.





## GEAR MOTOR NO. 29-2690

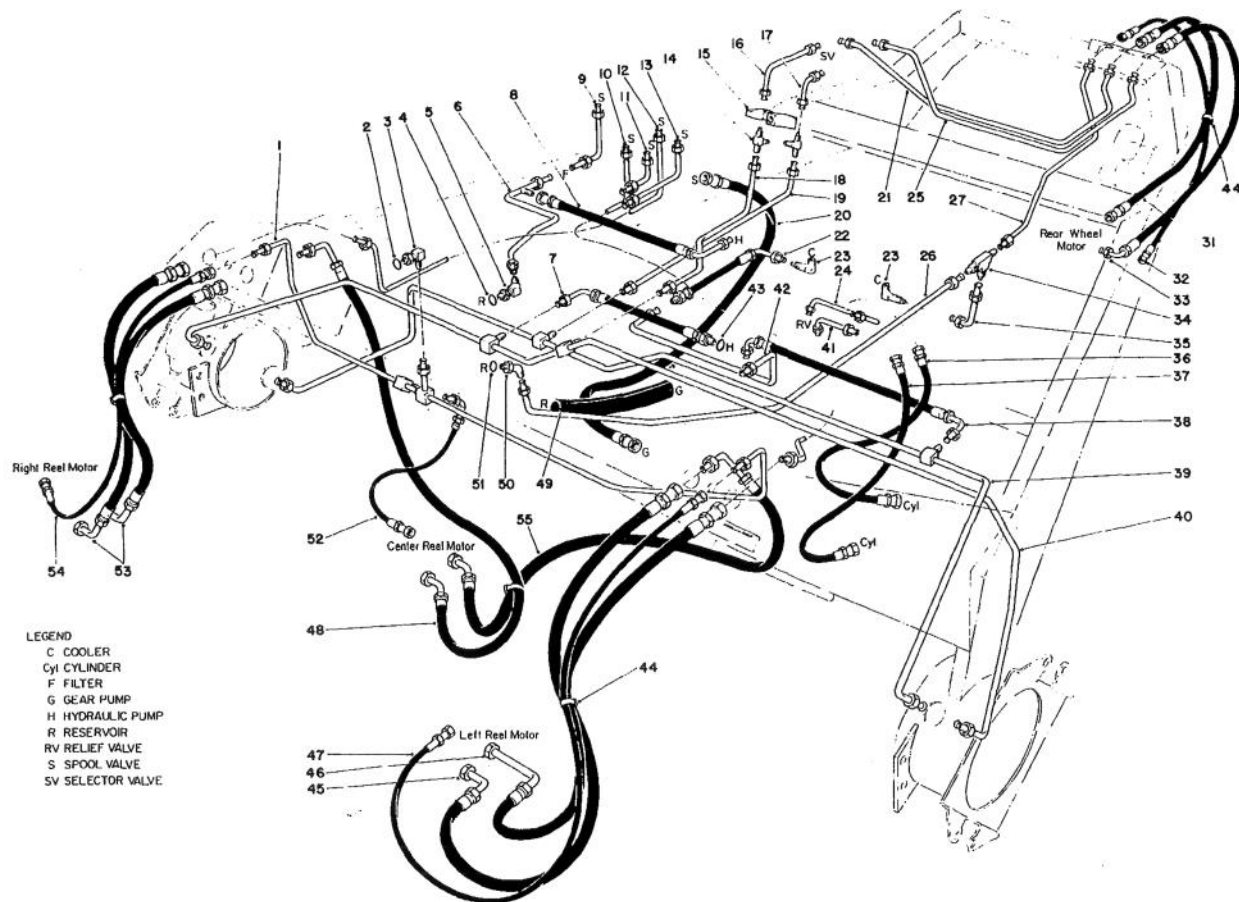
Ref. No.	Part No.	Description	No. Used
1	323-9	Capscrew	4
2	33-1490	Washer	4
3	33-1250	Cover Assembly Rear Port	1
4†		Gasket Seal	1
5	33-1130	Thrust Plate	1
6	33-1210	Driven Gear	1
7	33-1220	Drive Gear	1

Ref. No.	Part No.	Description	No. Used
8	3257-3	Woodruff Key	1
9	33-1160	Wear Plate	1
10†		Pressure Loading Seal	1
11	33-1180	Dowel Pin	2
12	33-1230	Body Assembly	1
13†		Shaft Seal	1
14	32151-34	Retaining Ring	1
*	33-5100	Seal Repair Kit (Incl. Ref. #4, 8, 10, 13)	1

\*Not Illustrated

†Items only available in Seal Repair Kit No. 33-5100

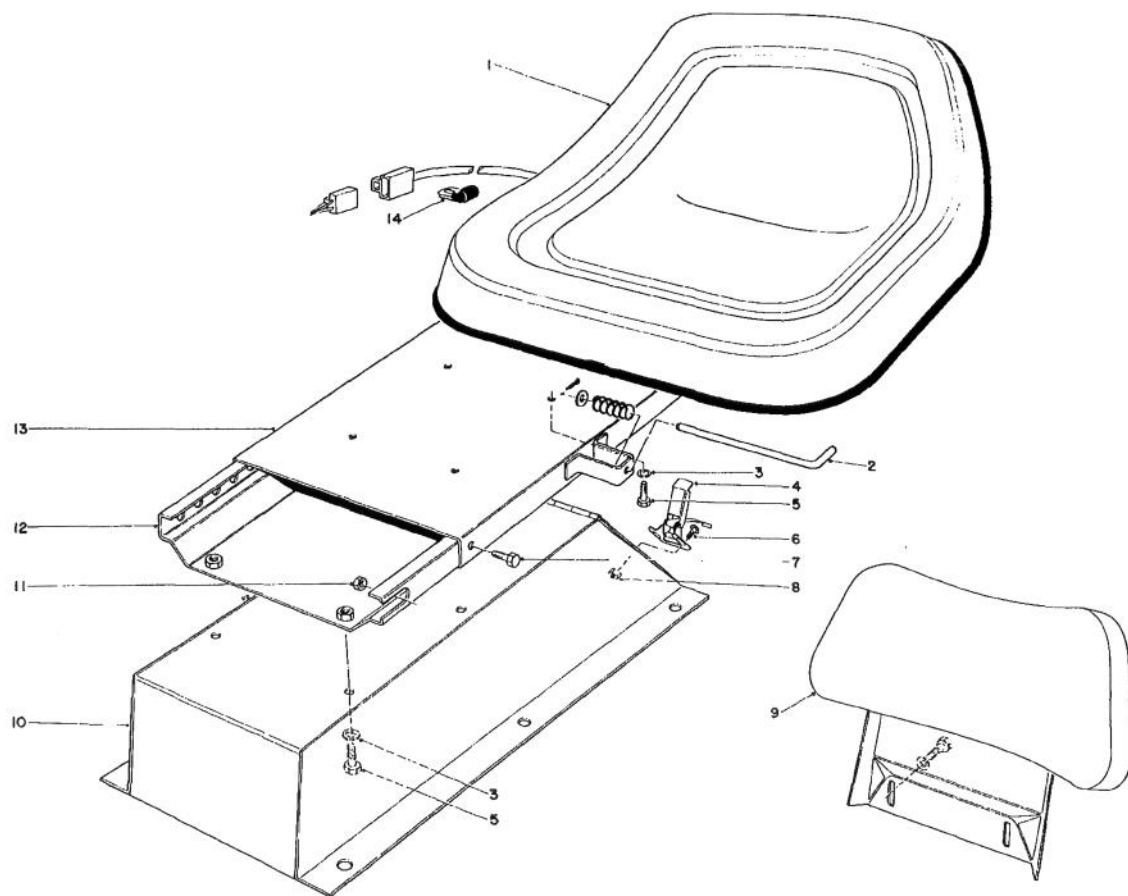
30 Note: Quantities indicated are for one Gear Motor Assembly.



## HYDRAULIC SCHEMATIC

Ref. No.	Part No.	Description	No. Used
1	29-1960	Manifold Drain	1
2	237-78	"O"-Ring	1
3	353-375	90° Fitting	1
4	237-81	"O" Ring	1
5	353-621	45° Fitting	1
6	29-3250	Tube - Filter to Tank	1
7	29-1630	Hose - Outlet	1
8	29-1590	Hose - Filter to Charge Inlet	1
9	29-1760	Tube - Valve to Filter	1
10	29-1920	Tube Spool to Right Front Cutting Unit	1
11	29-1820	Tube Spool to Relief - Front	1
12	29-1910	Tube to Left Front Cutting Unit	1
13	29-1810	Tube Spool to Relief Rear	1
14	353-623	Tee	2
15	29-1470	Needle Valve	1
16	29-1780	Tube - Selector Valve to Tow Return	1
17	29-1770	Tube - Selector Valve to Tow Pressure	1
18	29-1860	Tube - Tow to Return Manifold	1
19	29-1790	Tube - Tow to Pressure Manifold	1
20	36-4940	Hose - Pump to Valve	1
21	29-1900	Tube Selector Valve to Rear Return	1
22	29-1650	Hose - Case Drain to Cooler	1
23	353-428	90° Fitting	2
24	29-1800	Tube - Relief to Lockvalve	1
25	29-1890	Tube Selector Valve to Rear Pressure	1

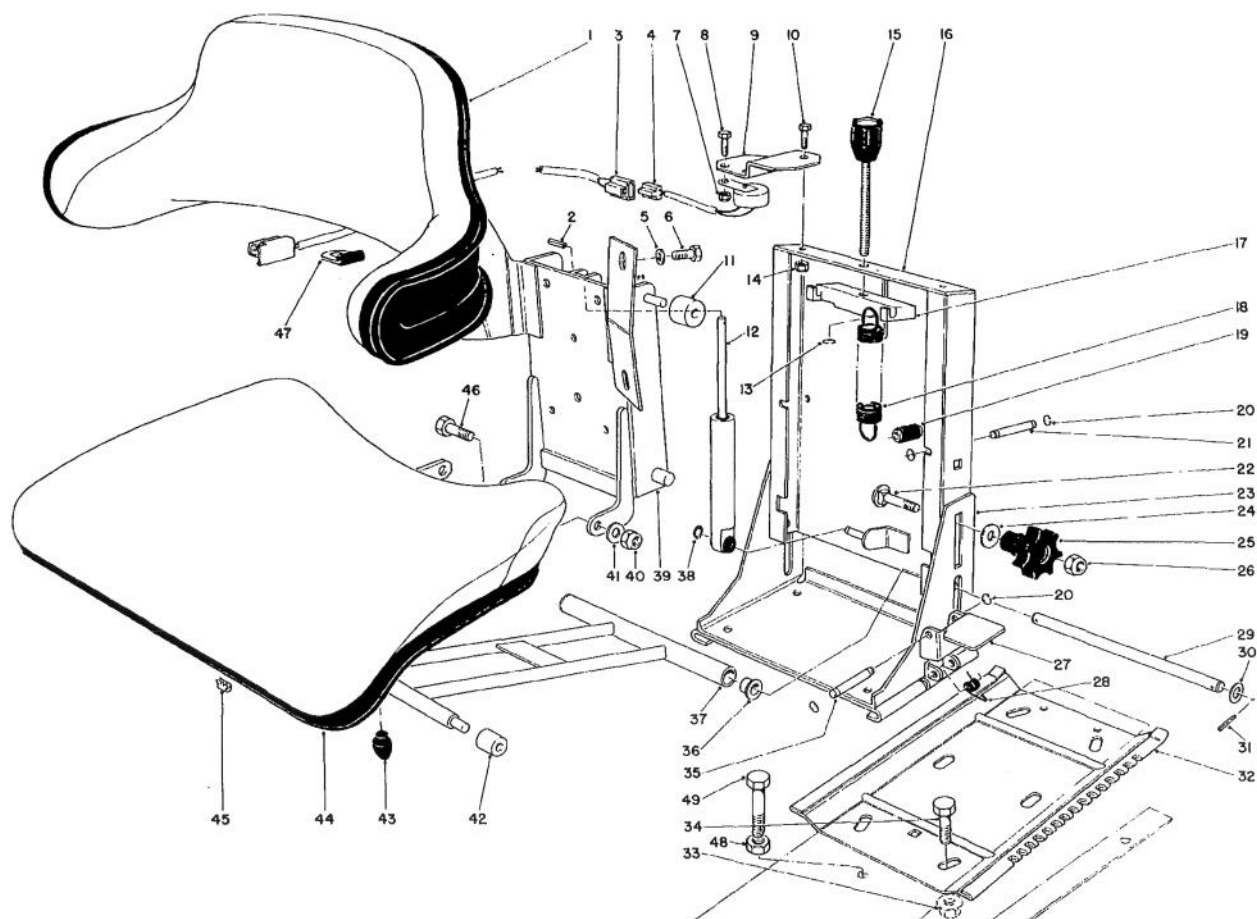
Ref. No.	Part No.	Description	No. Used
26	29-1940	Tube - Cooler to Tank	1
27	29-1930	Tube - Rear Motor to Return	1
31	29-1660	Hose - Rear Wheel	1
32	29-1600	Hose - Drain Rear Wheel	1
33	29-1670	Hose - Rear Wheel	1
34	29-1570	Tee	1
35	29-1830	Tube - Cooler to Return	1
36	29-1690	Hose - Lift Cylinder Rear	1
37	29-1680	Hose - Lift Cylinder Front	1
38	29-1740	Hose Outlet	1
39	29-1870	Manifold - Pressure	1
40	29-1880	Manifold - Return	1
41	29-1850	Tube - Relief to Lockvalve	1
42	29-1950	Tube - Case Drain to Cooler	1
43	237-80	"O" Ring	1
44	3290-378	Cable Tie	A/R
45	29-2860	Hose Left Front Cutting Unit	1
46	29-2870	Hose Left Front Cutting Unit	1
47	29-2880	Hose Left Front Cutting Unit Drain	1
48	29-1750	Hose Center Cutting Unit	1
49	29-1640	Hose - Suction	1
50	353-212	45° Fitting	1
51	237-42	"O" Ring	1
52	29-1720	Hose - Center Cutting Unit Return	1
53	29-1700	Hose - Front Cutting Unit	2
54	29-1710	Hose - Front Cutting Unit Drain	1
55	36-3150	Pressure Hose	1



### STANDARD SEAT WITH BACKREST KIT NO. 03552 (Optional)

Ref. No.	Part No.	Description	No. Used
1	29-2360	Seat Assembly	1
2	351-52	Plunger Assembly	1
3	3253-4	Lockwasher	10
4	249-21	Latch	1
5	322-3	Capscrew	10
6	32140-43	Machine Screw	2
7	321-2	Capscrew	2

Ref. No.	Part No.	Description	No. Used
8	3296-2	Locknut	2
9	29-8760	Backrest	1
10	29-2310	Tool Box	1
11	3218-1	Nut	2
12	351-36	Lower Slide Assembly	1
13	351-53	Upper Slide Assembly	1
14	18-2970	Clip	2



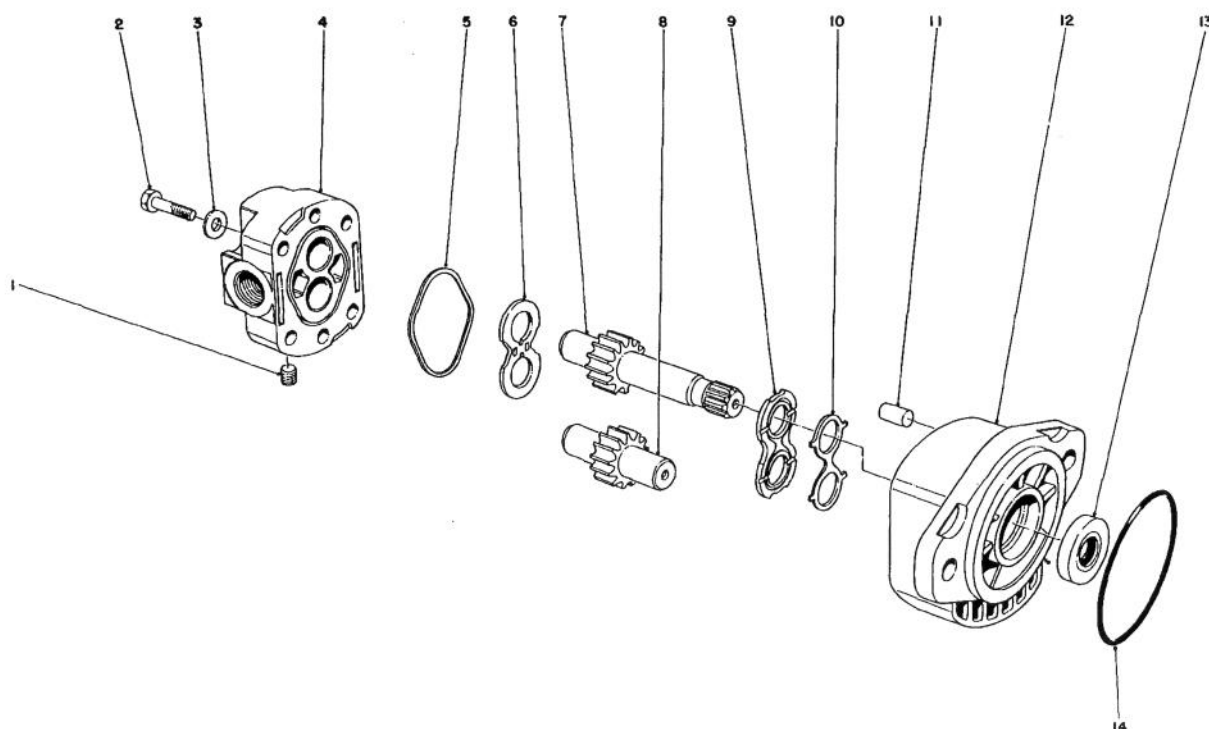
## SUSPENSION SEAT KIT MODEL NO. 03542 (Optional)

Ref. No.	Part No.	Description	No. Used
1	107950	Back Rest	1
2	102953	Roll Pin	1
3†	29-8690	Wire Assembly — Seat Switch	1
4†	29-1540	Safety Switch	1
5	200044	Washer	4
6	200304	Capscrew	4
7†	3296-2	Locknut	1
8†	3290-134	Hex Hd. Machine Screw	1
9†	29-8680	Bracket — Switch Mounting	1
10†	321-2	Capscrew	1
11	200014	Roller	2
12	101968	Shock Absorber	1
13	104493	Retaining Ring	1
14†	3296-42	Locknut	1
15	102295	Adjusting Knob	1
16	104624	Spring Housing	1
17	101625	Spring Retainer	1
18	102463	Spring Tension	2
19	106868	Roller	2
20	200796	Retaining Ring	6
21	106867	Pin	2
22	106601	Carriage Bolt	2
23	104620	Base Height Adjustment	1
24	104195	Washer	2

Ref. No.	Part No.	Description	No. Used
25	105238	Knob	2
26	200470	Nut	2
27	104548	Adjustment Lever	1
28	104458	Spring Torsion	1
29	105404	Pin	1
30	200427	Washer	2
31	200206	Roll Pin	2
32	102165	Slide Adjustment Plate	1
33†	32128-29	Flange Locknut	4
34†	323-4	Capscrew	4
35	102527	Pin	1
36	200008	Bushing	2
37	104621	Arm Assembly	1
38	200430	Retaining Ring	1
39	104622	Carrier Adjustment	1
40	200264	Nut	2
41	200283	Washer	2
42	200029	Roller	2
43	200072	Bumper	1
44	102970	Seat Cushion	1
45	106299	Clamps Outside	16
46	200603	Capscrew	2
47†	18-2970	Clip	3
48†	3217-7	Nut	1
49†	323-8	Capscrew	1

†Obtain from your local Toro Distributor.

Note: Parts not noted by † obtain from Panzer Corporation, Int'l. P.O. Box 9536 Minneapolis, Minn. 55440 or Grammer D 8450 Amberg/Opf, Postfach 224 West-Germany, Telefon 09621/82091 Telex 0631222.



## CLIP KIT NO. 36-5900

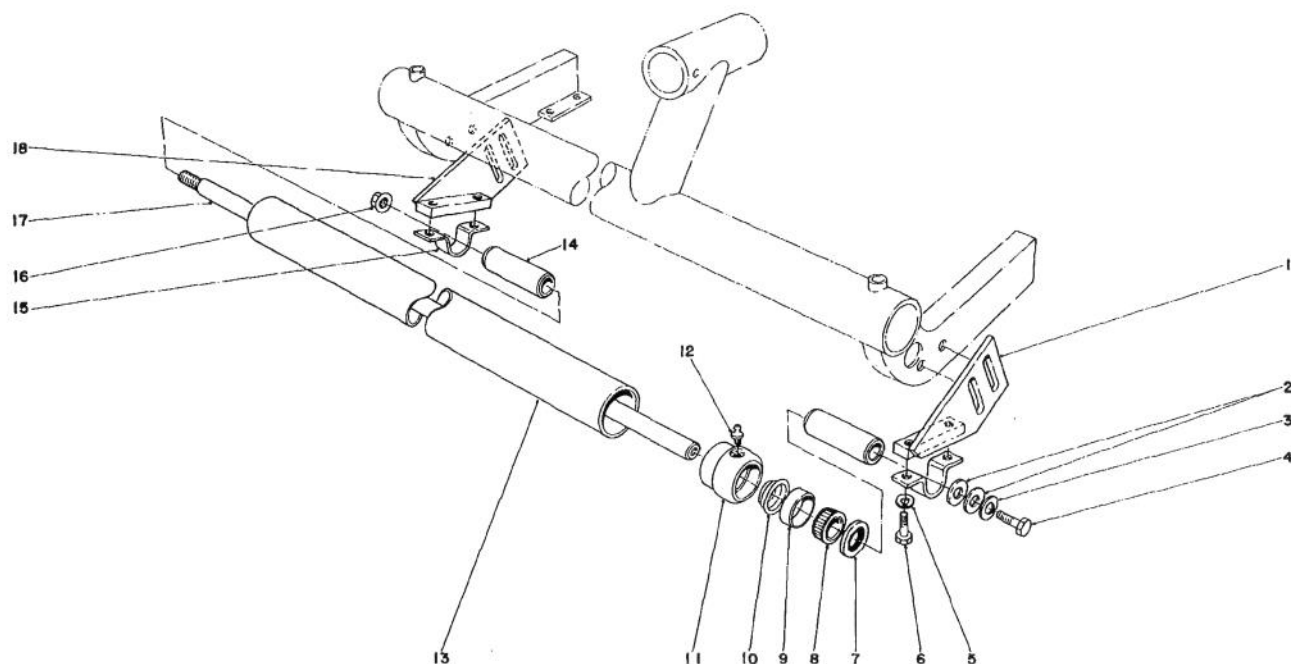
Ref. No.	Part No.	Description	No. Used
1	281-1	Pipe Plug	1
2	323-9	Capscrew	4
3	33-1490	Washer	4
4	33-1110	Cover Side Port	1
5†		Gasket Seal	1
6	33-1130	Thrust Plate	1
7	36-4890	Drive Gear	1
8	36-4900	Driven Gear	1

Ref. No.	Part No.	Description	No. Used
9	33-1160	Wear Plate	1
10†		Pressure Loading Seal	1
11	33-1180	Dowel Pin	2
12	36-4880	Body	1
13†		Shaft Seal	1
14	237-99	"O"-Ring	1
*	33-4910	Seal Repair Kit (Incl. Item 5, 10 and 13)	

\*Not Illustrated

†Item only available in Seal Repair Kit 33-4910

34 Note: Quantities indicated are for one Gear Motor Assembly.

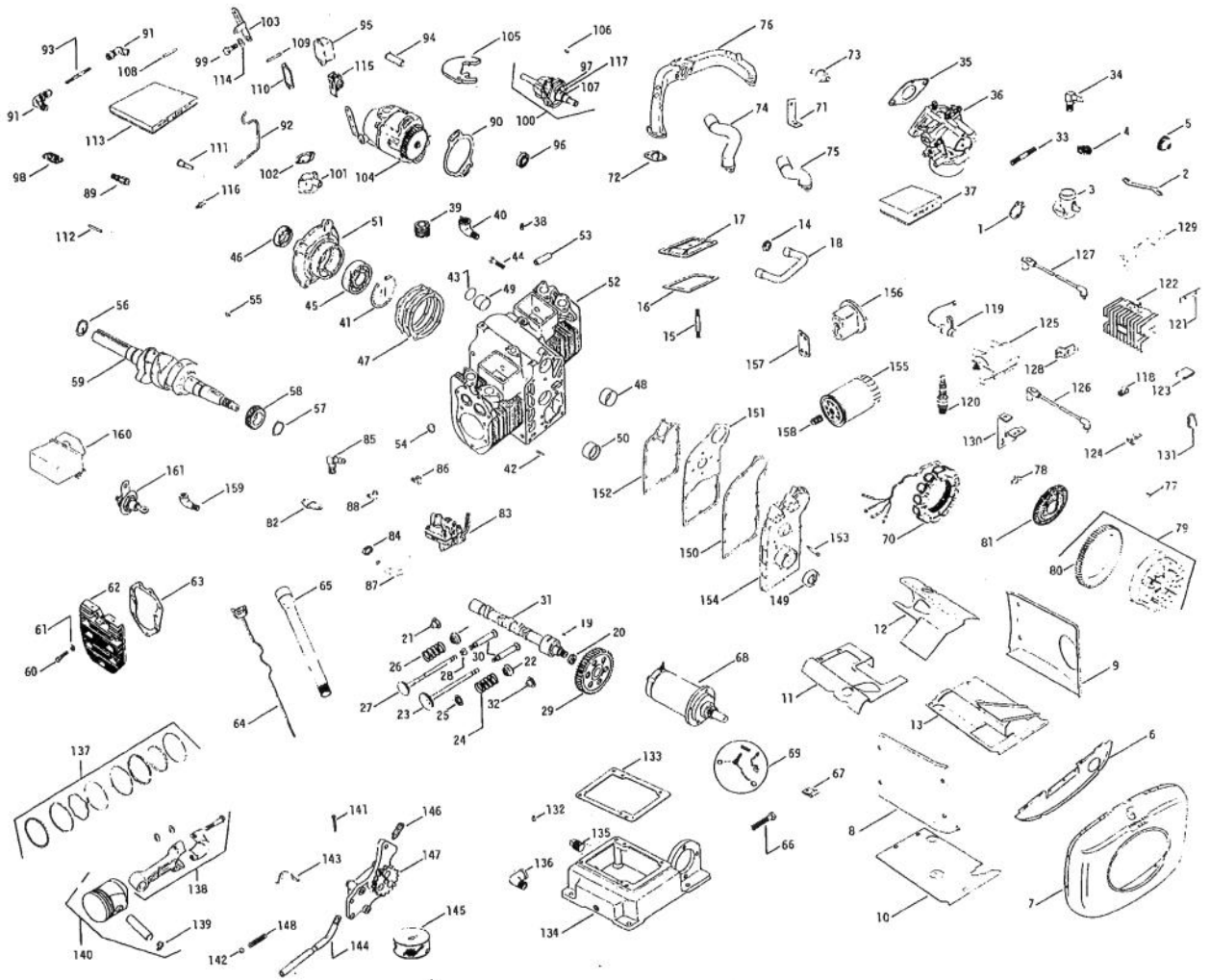


## FRONT ROLLER KIT NO. 03580

Ref. No.	Part No.	Description	No. Used
1	36-4970	Bracket L.H.	1
2	3256-26	Washer	2
3	3253-7	Lockwasher	1
4	3213-20	Capscrew	1
5	3253-21	Lockwasher	4
6	323-6	Capscrew	4
7	253-117	Seal	2
8	254-78	Bearing Cone	2
9	254-79	Bearing Cup	2

Ref. No.	Part No.	Description	No. Used
10	29-3440	Retainer Grease	2
11	5-4035	End Cap. Roller	2
12	302-5	Grease Fitting	2
13	29-3800	Roller Assy. (Incl. 2-4, 7-14 & 16-17)	1
14	29-3900	Wear Sleeve Roller	2
15	29-3940	Clamp Roller	2
16	32128-15	Flange Nut	1
17	29-3850	Shaft Roller	1
18	36-4980	Bracket R.H.	1

# ENGINE KOHLER MODEL NO. K582QS TYPE NO. EXPC-36261A



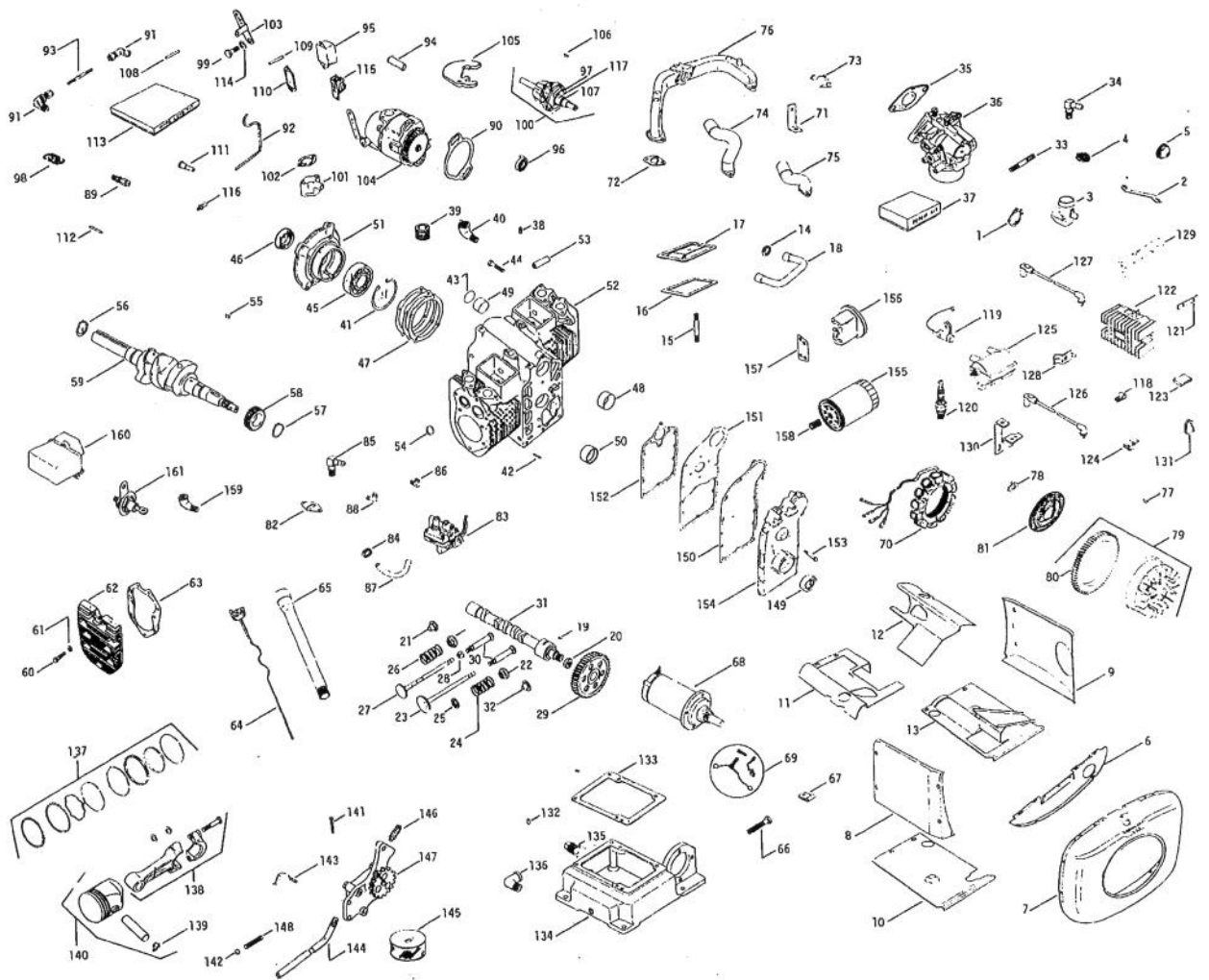


# ENGINE KOHLER MODEL NO. K582QS TYPE NO. EXPC-36261A

Ref. No.	Part No.	Description	No. Used
		<b>AIR INTAKE GROUP</b>	
1	277069	Gasket	1
2	277116	Brace, Elbow	1
3	277396	Elbow, Air Cleaner	1
4	48 162 05	Screen	1
		<b>BAFFLES &amp; SHROUD GROUP</b>	
5	243035	Grommet	1
6	277058	Baffle, Bl. Hsg. Support	1
7	48 027 04	Housing, Blower	1
8	48 063 08	Baffle, Side Cyl. # 1	1
9	48 063 09	Baffle, Side Cyl. #2	1
10	48 063 10	Baffle, Bottom Cyl. #1	1
11	48 063 12	Baffle, Top Cyl. #1	1
12	48 063 02	Baffle, Top Cyl. #2	1
13	48 063 13	Baffle, Bottom Cyl. #2	1
		<b>BREATHER &amp; VENT GROUP</b>	
14	X-426-3	Clamp, Hose	2
15	220368	Stud, Valve Cover	2
16	270034	Gasket, Valve Cover	2
17	270036	Cover, Valve	2
18	277392	Hose, Breather	1
		<b>CAMSHAFT &amp; VALVES GROUP</b>	
19	X-43-1	Key, Woodruff 3	1
20	X-119-17	Nut, Jam 3/4 - 16	1
21	230011	Retainer, Exhaust Valve Spring	2
22	230020	Rotator, Exhaust Valve	2
23	235008	Valve, Intake	2
24	235010	Spring, Intake Valve	2
25	235011	Retainer, Valve Spring	4
26	235168	Spring, Exhaust Valve	2
27	237672	Valve, Exhaust	2
28	41 755 10	Key, Retainer	8
29	277012	Gear, Camshaft	1
30	D-277031	Tappet	4
31	48 012 01	Camshaft	1
32	230011	Retainer, Intake Valve Spring	2
		<b>CARBURETOR GROUP</b>	
33	X-352-10	Stud	2
34	X-391-1	Elbow	1
35	271030	Gasket, Carburetor	1
36	48 053 24	Carburetor — Assembly	1
37	221519	Kit, Repair	1
		<b>CRANKCASE GROUP</b>	
38	X-75-23	Plug, Pipe 1/8 H. Socket	3
39	X-75-31	Plug, Pipe	1
40	X-211-10	Elbow	1
41	X-269-31	Ring, Retaining	1
42	X-599-2	Pin	2
43	160037	Plug, Welch 1-1/2	1
44	270956	Screw, H.C. 3/8 - 16 x 1-1/4	4
45	277062	Bearing, Ball	1
46	277065	Seal, Rear Oil	1
47	277087	Gasket, Closure Plate	1
48	277038	Bushing	1

Ref. No.	Part No.	Description	No. Used
49	277039	Bushing	1
50	277208	Bearing	1
51	48 009 12	Plate, Rear Closure	1
52	48 005 06	Crankcase — Assembly	1
53	235007-S	Guide, Valve	1
54	48 031 01	Insert, Intake Valve	1
		<b>CRANKSHAFT GROUP</b>	
55	X-42-15	Key, Woodruff	1
56	X-269-30	Ring, Retaining	1
57	X-269-32	Ring, Retaining	1
58	277009	Gear, Crankshaft	1
59	48 014 15	Crankshaft	1
		<b>CYLINDER HEAD GROUP</b>	
60	270158	Screw, H.C. 3/8 - 16 x 1-1/2	18
61	270889	Washer 3/8	18
62	48 015 01	Head, Cylinder	2
63	48 052 01	Gasket, Cylinder Head	2
		<b>DIPSTICK GROUP</b>	
64	48 272 01	Dipstick	1
65	48 538 01	Tube, Dipstick	1
		<b>ELECTRIC START GROUP</b>	
66	X-778-1	Screw, R.H.M.	4
67	270154	Clip, Cable	2
68	A-277599	Starter — Assembly	1
69	277613	Kit, brush and Spring	1
70	237878	Kit, Stator	1
		<b>INTAKE &amp; EXHAUST GROUP</b>	
71	236742	Strap, Lifting	2
72	277091	Gasket	2
73	48 052 02	Gasket, Intake	2
74	48 054 04	Elbow, Exh. Cyl. #1	1
75	48 054 05	Elbow, Exh. Cyl. #2	1
76	48 164 07	Manifold, Intake	1
		<b>FLYWHEEL GROUP</b>	
77	X-45-3	Key, Woodruff	1
78	277595	Nut, Lock	1
79	48 025 02	Flywheel	1
80	277122	Gear, Ring	1
81	48 162 01	Screen, Grass	1
		<b>FUEL PUMP GROUP</b>	
82	47 041 04	Gasket	1
83	48 559 01	Pump, Fuel (Includes Gasket)	1
84	X-309-14	Clamp, Hose	1
85	X-391-1	Connector	1
86	X-555-2	Elbow 90°	1
87	X-697-1	Line Fuel	1
88	231510	Connector	1
		<b>GOVERNOR GROUP</b>	
89	X-343	Connector	1
90	277078	Gasket — Governor Housing	1
91	277337	Elbow	1
92	277669	Line, Oil	1
93	271151	Rod, Ball Joint	1
94	45 208 03	Body, Ball Joint	1

# ENGINE KOHLER MODEL NO. K582QS TYPE NO. EXPC-36261A



## PRODUCT CHANGES

In an effort to make improvements available to TORO owners as quickly as possible, minor changes are incorporated into Toro's products from time to time that do not become immediately shown in the Parts Catalog. If such a change apparently has been made in your unit, which is not reflected in your manual, see your TORO Distributor for information and part numbers.

## IDENTIFICATION AND ORDERING

### Model and Serial Numbers

The Turf Pro 84 has two identification numbers: a model number and a serial number. The two numbers are stamped on a plate which is located on right hand side of floor plate. In any correspondence concerning the Turf Pro 84, supply model and serial numbers to assure that correct information and replacement parts are obtained.

To order replacement parts from an Authorized TORO Distributor, supply the following information:

1. Model and serial numbers of the Turf Pro 84.
2. Part number, description, and quantity of part(s) desired.

**NOTE:** Do not order by reference number if a parts catalog is being used; use the PART NUMBER.

## The Toro Promise

*A One Year Limited Warranty on Turf Products Other Than Walk Rotary Mowers*

*The Toro Company promises to repair any TORO Product if defective in materials or workmanship. The following time periods from the date of purchase apply:*

Turf Products . . . . .	1 Year
Hevi-Duty Walk Rotary Mowers . . . . .	90 Days

*The costs of parts and labor are included, but the customer pays the transportation costs on walk rotary mowers.*

Should you feel your TORO is defective and wish to rely on The Toro Promise, the following procedure is recommended:

1. Contact your Authorized TORO Distributor (the Yellow Pages of your telephone directory is a good reference source).
2. The TORO Distributor will advise you on the arrangements that can be made to inspect and repair your product.
3. The TORO Distributor will inspect the product and advise you whether the product is defective and, if so, make all repairs necessary to correct the defect without extra charge to you.

If for any reason you are dissatisfied with the distributor's analysis of the defect or the service performed, you may contact us.

Write:

TORO Turf Products Service Department  
8111 Lyndale Avenue South  
Minneapolis, Minnesota 55420

The above remedy of product defects through repair by an Authorized TORO Distributor is the purchaser's sole remedy for any defect.

THERE IS NO OTHER EXPRESS WARRANTY. ALL IMPLIED WARRANTIES OF MERCHANTABILITY AND FITNESS FOR USE ARE LIMITED TO THE DURATION OF THE EXPRESS WARRANTY.

Some states do not allow limitation on how long implied warranty lasts, so the above limitation may not apply to you.

This Warranty applies only to parts or components which are defective and does not cover repairs necessary due to normal wear, misuse, accidents, or lack of proper maintenance. Regular, routine maintenance of the unit to keep it in proper operating condition is the responsibility of the owner.

All warranty repairs reimbursable under The Toro Promise must be performed by an Authorized TORO Distributor using Toro approved replacement parts.

Repairs or attempted repairs by anyone other than an Authorized TORO Distributor are not reimbursable under The Toro Promise. In addition, these unauthorized repair attempts may result in additional malfunctions, the correction of which is not covered by warranty.

The Toro Company is not liable for indirect, incidental or consequential damages in connection with the use of the product including any cost or expense of providing substitute equipment or service during periods of malfunction or non-use.

Some states do not allow the exclusion of incidental or consequential damages, so the above exclusion may not apply to you.

This warranty gives you specific legal rights, and you may also have other rights which vary from state to state.