



Side View Mirror Kit

Workman® UTX Passenger Utility Vehicle

Model No. 08140

Installation Instructions

Installation

Loose Parts

Use the chart below to verify that all parts have been shipped.

Description	Qty.	Use
No parts required	—	Prepare the machine.
Mirror	2	Install the mirrors (for machines without a cab installed).
Mirror bracket	2	
Torx-head screw (M8 x 16 mm)	8	
Mirror	2	Install the mirrors (for machines with a cab installed).
Torx-head screw (M8 x 16 mm)	4	

Preparing the Machine

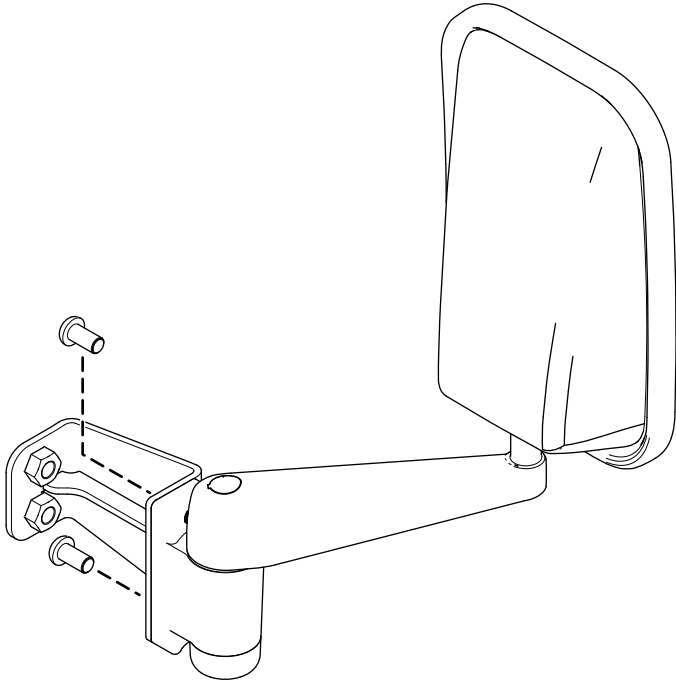
1. Park the machine on a level surface.
2. Shift the transmission lever to the P (Park) position.
3. Shut off the engine and remove the key.



Installing the Mirrors

Machines without a Cab Installed

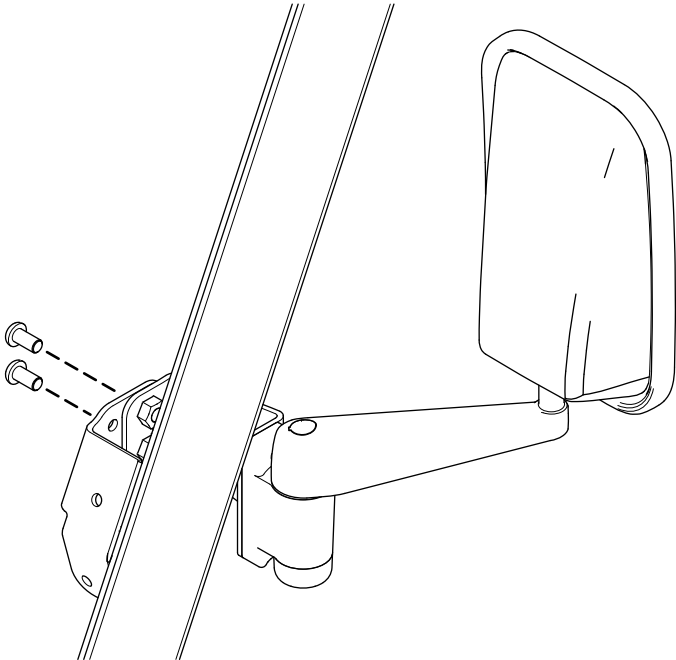
1. Secure the mirror to the mirror bracket using 2 torx-head screws ([Figure 1](#)).



g377324

Figure 1

-
2. Secure the mirror assembly to the ROPS bracket using 2 torx-head screws ([Figure 2](#)).



g377325

Figure 2

3. Torque each screw to 26 N·m (228 in-lb).
4. Repeat this procedure on the other side of the machine.

Installing the Mirrors

Machines with a Cab Installed

1. Remove the existing 2 torx-head screws, 2 washers, and 2 locknuts (6 mm) from the cab door ([Figure 3](#)).

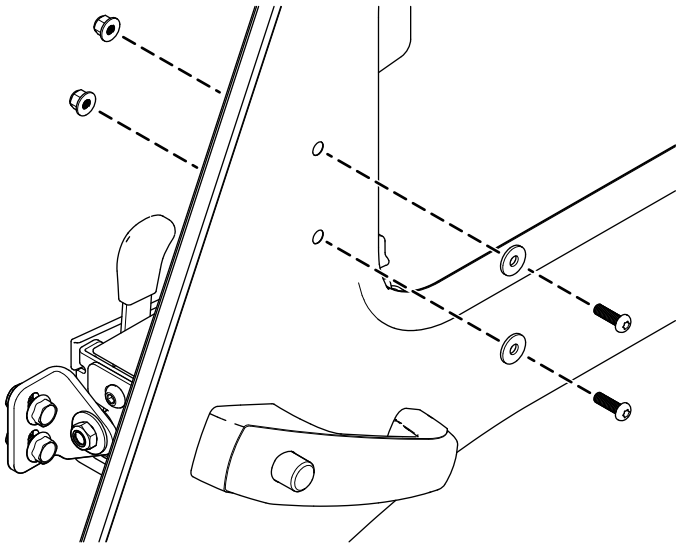
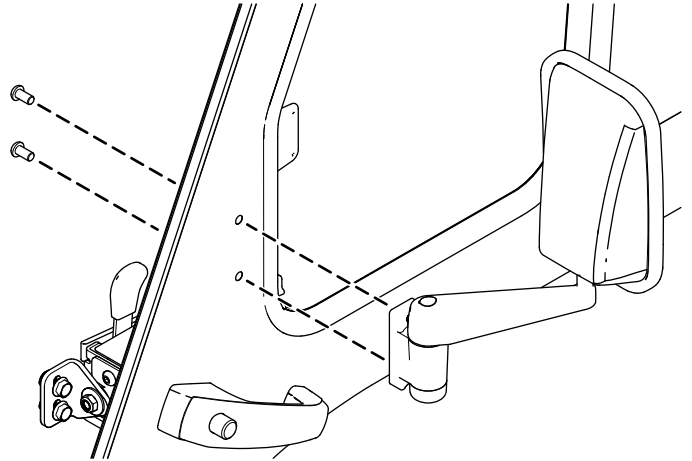


Figure 3

g376295

2. Secure the mirror to the door using 2 torx-head screws (M8 x 16 mm) as shown in [Figure 4](#).
3. Torque each screw to 26 N·m (228 in-lb).



g376338

Figure 4

4. Repeat this procedure on the other side of the machine.



Count on it.