



Hydraulic Reservoir Kit

Groundsmaster® 455D

Part No. 104-0165

Form No. 3326-595

Installation Instructions

Draining Hydraulic Tank

1. Turn engine off, release hood latch and raise hood.
2. Remove drain plug from rear of reservoir and hydraulic line from front of reservoir (Fig. 1) and let hydraulic oil flow into drain pan. Dispose of the oil properly.

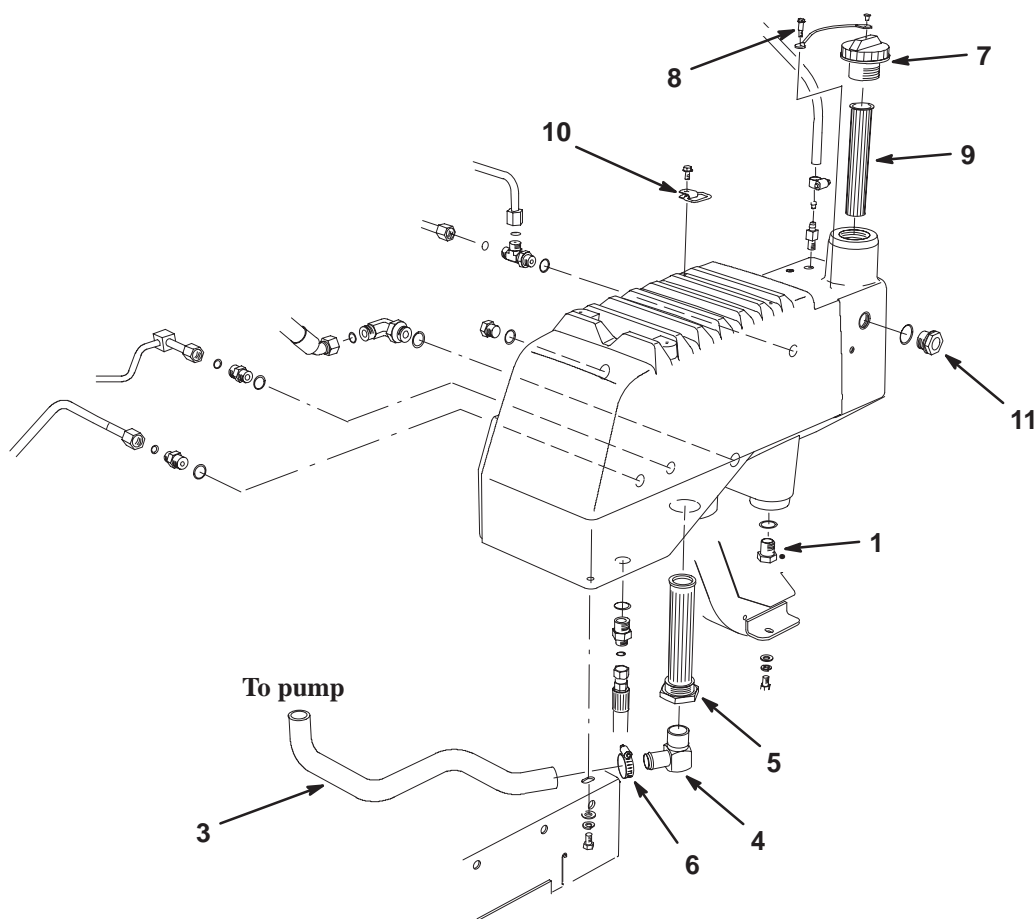


Figure 1

- | | | | |
|---------------------------|----------------------|-----------------------|------------------------------|
| 1. Drain plug | 4. 90 degree fitting | 7. Hydraulic tank cap | 10. D-ring, retainer & screw |
| 2. Hydraulic line (drain) | 5. Suction strainer | 8. Shoulder screw | 11. Sight gauge |
| 3. Suction hose | 6. Hose clamp | 9. screen filter | |

Removing Hydraulic Tank

1. Remove hose clamps securing suction hose to 90 degree fitting on hydraulic tank suction strainer and from fitting on hydraulic pump (Fig. 1). Discard hose but retain hose clamps.
2. Disconnect all remaining hydraulic lines, fittings and plugs from hydraulic tank (Fig. 1).
3. Remove (4) bolts and washers securing hydraulic tank to frame and remove tank. Retain mounting fasteners (Fig. 1).
4. Remove and retain the hydraulic tank cap, shoulder screw and screen filter from filler neck of hydraulic tank (Fig. 1).
5. Remove and retain the (4) D-rings, retainers and screws from top of hydraulic tank (Fig. 1).

6. Remove and retain the sight gauge from the side of hydraulic tank (Fig. 1). Discard tank, suction strainer and 90 degree fitting.

Installing Hydraulic Tank

1. Mount new suction strainer and O-ring to bottom of new hydraulic tank (Fig. 2).

Important Before installing any hydraulic fittings, make sure new o-rings are lubricated with hydraulic oil and positioned correctly.

2. Mount sight gauge to side of hydraulic tank (Fig. 1).
3. Mount the (4) D-rings, retainers and screws to top of hydraulic tank (Fig. 1).
4. Mount the hydraulic tank cap, shoulder screw and screen filter to filler neck of hydraulic tank (Fig. 1).
5. Mount tank to frame using (4) bolts and washers previously removed.
6. Using hose clamps Mount new suction hose to suction strainer on hydraulic tank and to pump fitting (Fig. 2).

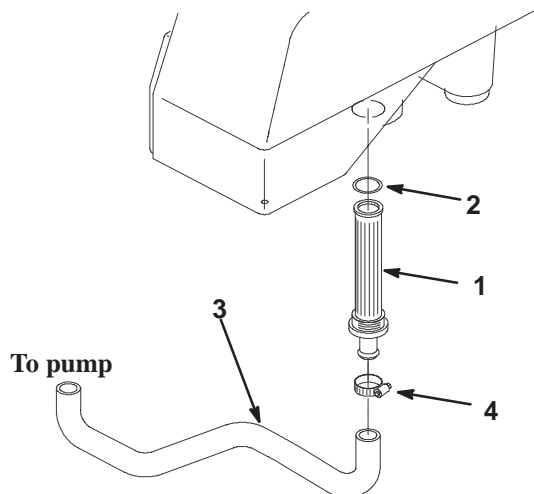


Figure 2

- | | |
|-------------|-----------------|
| 1. Strainer | 3. Suction hose |
| 2. O-ring | 4. Hose clamp |

7. Install remaining hydraulic fittings and drain plug to hydraulic tank. Use new O-rings.
8. Connect all hydraulic lines to fittings. Use new O-rings.

Filling Hydraulic Tank

1. Fill reservoir with approximately 6.5 gallons of hydraulic oil. Refer to Operator's Manual for oil specifications.

Important Use only hydraulic oils specified. Other fluids could cause system damage.

2. Install reservoir cap, lower hood and latch. Start engine and use all hydraulic controls to distribute hydraulic oil throughout the system. Also check for leaks. Then stop the engine.
3. With wing decks raised, center deck down and oil warm, look into sight gauge. If hydraulic oil is not visible, add enough oil to raise level to middle (maximum) of sight gauge. To prevent over filling, do not fill if oil is cold. **DO NOT OVER FILL.**
4. Check all connections for leaks, kinked lines and loose fittings.

DANGER

POTENTIAL HAZARD

- Hydraulic fluid is under pressure.

WHAT CAN HAPPEN

- Hydraulic fluid escaping under pressure can penetrate skin and cause injury.
- Fluid accidentally injected into the skin must be surgically removed within a few hours by a doctor familiar with this form of injury or gangrene may result.

HOW TO AVOID THE HAZARD

- Keep body and hands away from pin hole leaks or nozzles that eject high pressure hydraulic fluid.
- Use cardboard or paper to find hydraulic leaks.