



Guardian[®] 72 Recycler[®] Mower Groundsmaster[®] 300 Series

Model No. 30716—210000501 and Up

Model No. 30716TE—210000501 and Up

Parts Catalog

Ordering Replacement Parts

To order replacement parts, please supply: the part number, the quantity, and the description of each part desired.

Understanding Reference Numbers

Each identified part in an illustration has a reference number. The reference number for a part also appears in the parts list, along with other information about the part.

This catalog uses two special reference number formats, one to indicate parts in a service assembly and another to indicate the quantity of a given part in an illustration.

Service Assembly Reference Numbers

Parts in service assemblies have reference numbers in the form **a:b**. The **a** represents the reference number of the entire service assembly and the **b** represents a sequential number unique to each part within the service assembly.

For example, a wheel assembly might be identified by reference number **6**, the tire by **6:1**, the valve by **6:2**, and the wheel by **6:3**. When you order the assembly identified by reference number **6**, you receive all parts identified by reference numbers **6:1**, **6:2**, and **6:3**. However, you may also order any part individually.

Reference numbers of this type appear in illustrations and in part lists.

Reference Numbers Indicating Quantity

In an illustration, if a reference number indicates more than one part, the reference number has the form **nX y**. The **n** represents the quantity of the part, the **X** is the multiplication symbol, and the **y** represents the reference number.

For example, in an illustration, the reference number **2X 37** means that two of the parts identified by reference number **37** are indicated.

Contents

Description	Page	Description	Page
Roller, Skid, Idler and Baffle Assembly	3	Gearbox and Drive Assembly	9
Deck Assembly No. 105-4285	4	Driveshaft Assembly No. 93-9962	10
Lift Arm and Caster Wheel Assembly	5	Driveshaft with Guard Assembly No. 93-9994 .	11
Chamber Assembly	6	Gear Box Assembly No. 104-3441	12
Spindle Assembly	7	Cover Assembly	13
Spindle and Blade Assembly	8	Optional Foam Filled Caster Wheel Assembly .	14

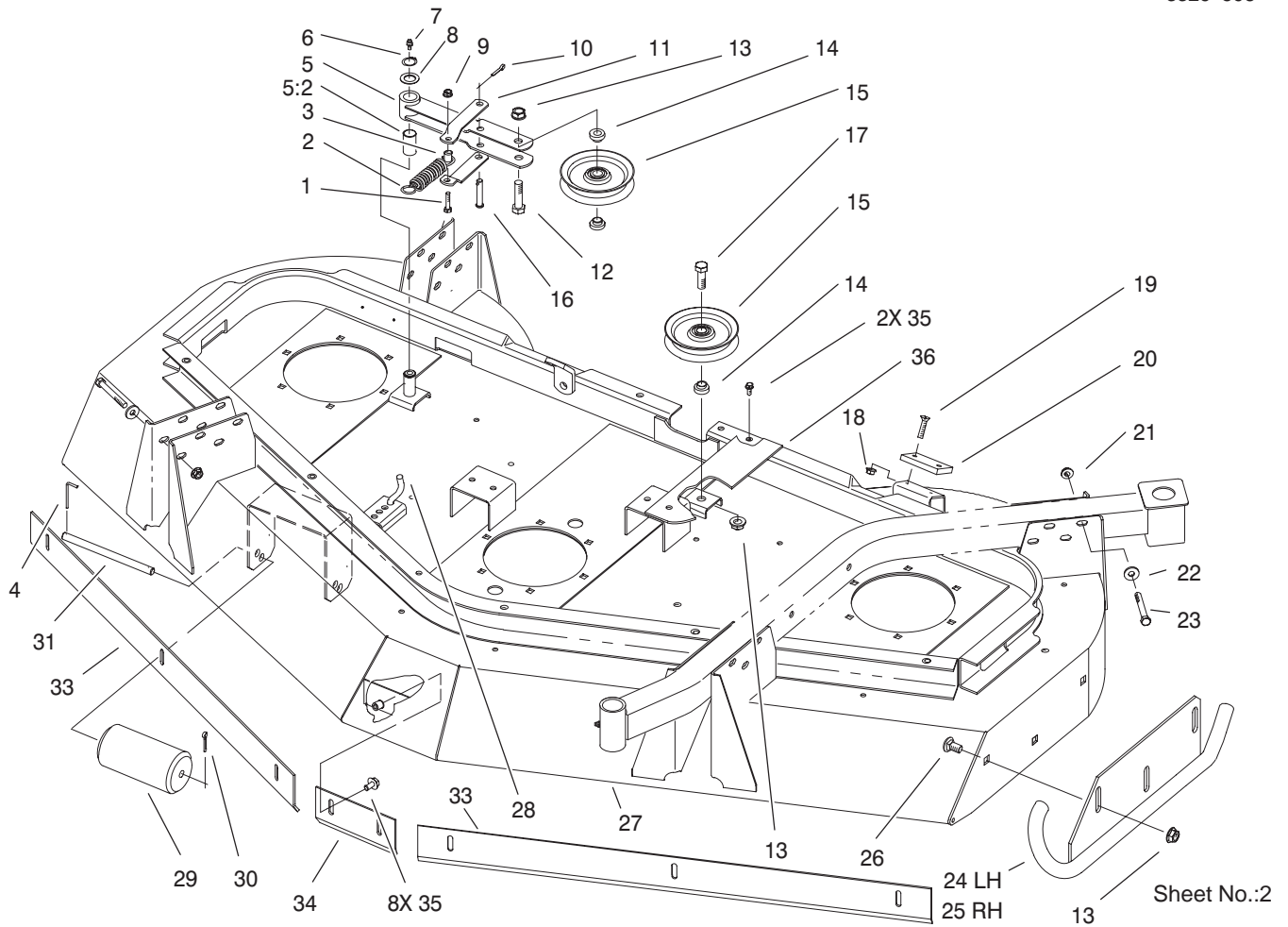
Accessories

Description	Model / Part No.	Description	Model / Part No.
Spindle Assembly Kit	95-3091	Blade and Belt Kit	95-3088
Caster Wheel Kit-10"	12-1509		

Part Description Abbreviations

Part descriptions in this catalog may include the following abbreviations.

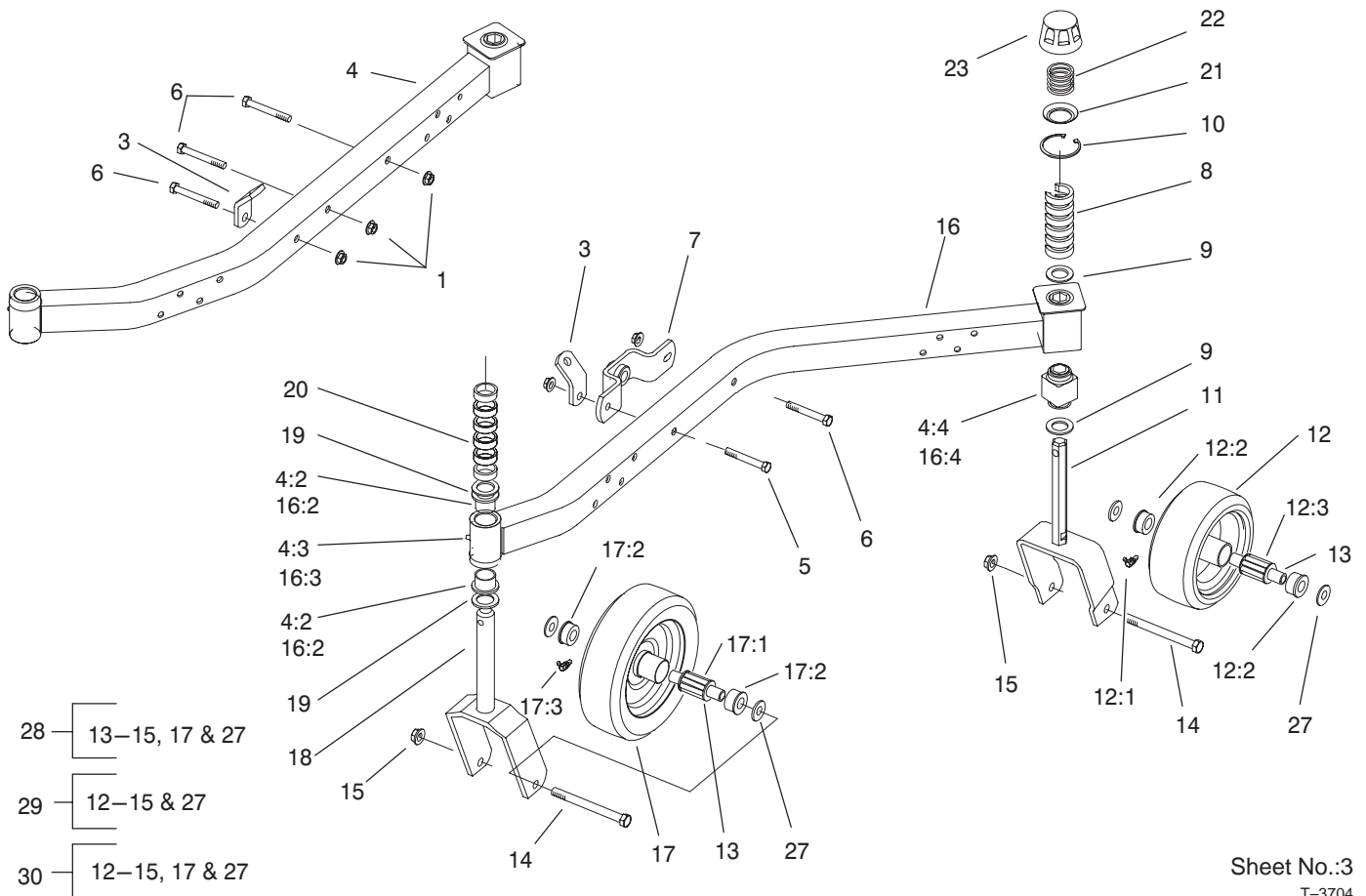
Abbreviation	Meaning	Abbreviation	Meaning
AR	as required	HYD	hydraulic
ASM	assembly	INC	incorporated
CARR	carriage	LH	left hand
DEG	degrees	NI	nylon insert
FH	flat head	PPH	Phillips pan head
GA	gauge	PTH	Phillips truss head
HF	hex flange	PTO	power take off
HH	hex head	RH	right hand
HHF	hex head flange	SFH	slotted fillister head
HLH	hex lag head	SHH	slotted hex head
HJ	hex jam	SQH	square head
HOC	height-of-cut	SHWH	slotted hex washer head
HS	hex socket	SPH	slotted pan head
HSBH	hex socket button head	SRH	slotted round head
HSFH	hex socket flat head	STD	standard
HSH	hex socket head	TAP	self tapping
HWH	hex washer head	TTH	Torx truss head
HWHTF	hex washer head thread forming	WH	wing head



Roller, Skid, Idler and Baffle Assembly

Ref. No.	Part No.	Qty.	Description
1	321-8	1	Screw-HH
2	85-6390-03	1	Spring-Extension
3	85-5930	1	Tube-Bracket, Spring
4	57-0690	3	Pin-Special
5	85-5900	1	Arm-Idler
5:2	256-188	1	Bushing
6	32120-72	1	Ring-Snap
7	302-2	1	Fitting-Grease
8	3-6498	1	Washer-Thrust
9	32128-32	1	Nut-HHF
10	3290-467	1	Pin-Hair
11	85-5920-01	2	Bracket-Spring
12	325-8	1	Screw-HH
13	32128-49	8	Nut-HHF
14	69-6960	3	Spacer-Idler
15	63-1540-03	2	Pulley-Idler
16	283-82	1	Pin-Clevis
17	325-6	1	Screw-HH
18	32128-25	2	Nut-Flange
19	32108-103	2	Screw-FH
20	69-9290	1	Pad-Bumper
21	32128-19	16	Nut-HF
22	5-0838	16	Washer
23	323-14	16	Screw-HH
24	85-5980-01	1	Skid-LH
25	85-5950-01	1	Skid-RH

Ref. No.	Part No.	Qty.	Description
26	3233-9	6	Screw-CARR
27	105-4285	1	Deck ASM
28	85-5940	1	Rod-Spring
29	36-1740	3	Roller-Deck
30	3272-11	3	Pin-Cotter
31	40-6400	3	Shaft-Roller
33	93-4390-01	2	Baffle - Side (only on: 30716te)
34	93-4391-01	1	Baffle - Center (only on: 30716te)
35	3234-5	8	Screw-HHF (only on: 30716te)
35	3234-5	2	Screw-HHF
36	105-3684	1	Plate-Cover

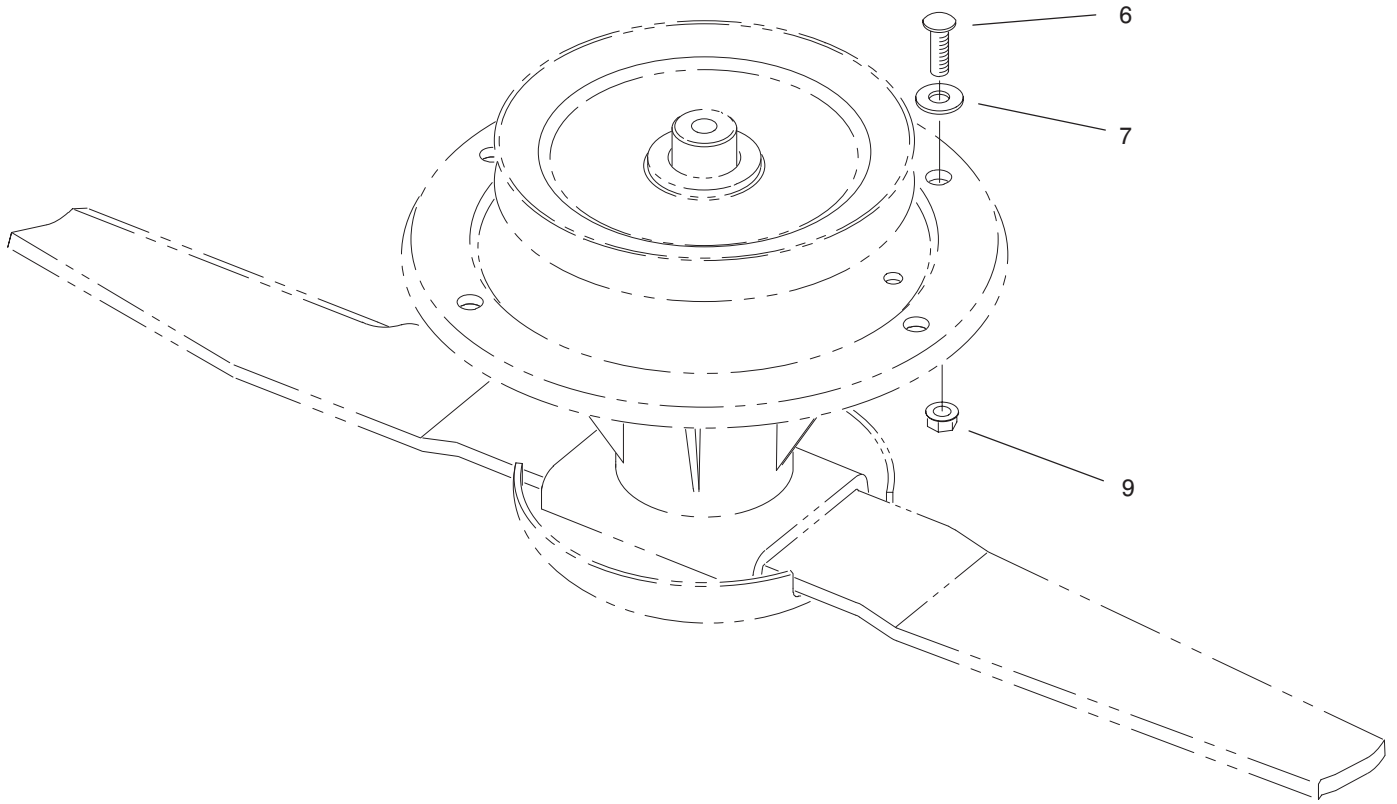


Sheet No.:3
T-3704

Lift Arm and Caster Wheel Assembly

Ref. No.	Part No.	Qty.	Description
1	32128-42	5	Nut-HF
3	85-5830-01	2	Bracket-Chain
4	94-5430	1	RH Castor Arm ASM
4:2	94-1291	2	Bushing-Special
4:3	302-5	1	Fitting-Grease
4:4	93-8471	1	Bushing-Rubber, Square
5	324-13	1	Screw-HH
6	324-12	4	Screw-HH
7	85-5810-01	1	Mount-Ball Joint
8	92-8866	12	Spacer
9	92-1765	4	Washer - Thrust
10	92-5581	4	Ring-Retaining
11	94-5383-01	2	Fork-Caster, Rear
12	85-5760	2	Wheel
12:1	302-40	1	Fitting-Grease
12:2	62-5580	2	Bearing-Outside
12:3	83-4740	1	Bearing
13	62-4340	4	Spanner
14	325-22	4	Screw-HH
15	32128-23	4	Nut-HF
16	94-5429	1	LH Castor Arm ASM
16:2	94-1291	2	Bushing-Special
16:3	302-5	1	Fitting-Grease
16:4	93-8471	1	Bushing-Rubber, Square

Ref. No.	Part No.	Qty.	Description
17	92-1655	2	Wheel-Castor
17:1	83-4740	1	Bearing
17:2	62-5580	2	Bearing-Outside
17:3	302-40	1	Fitting-Grease
18	94-5381-01	2	Fork-Caster, Front
19	3-6781	4	Washer-Thrust
20	63-0070	12	Spacer
21	92-5583	4	Washer-Cap
22	92-5584	4	Spring-Compression
23	92-8861	4	Cap-HOC
27	3256-6	8	Washer-Flat
28	95-3082	1	Kit-Caster Wheel, 10"
29	95-3083	1	Kit-Caster Wheel, 8"
30	95-3085	1	Kit-Caster Wheel Set



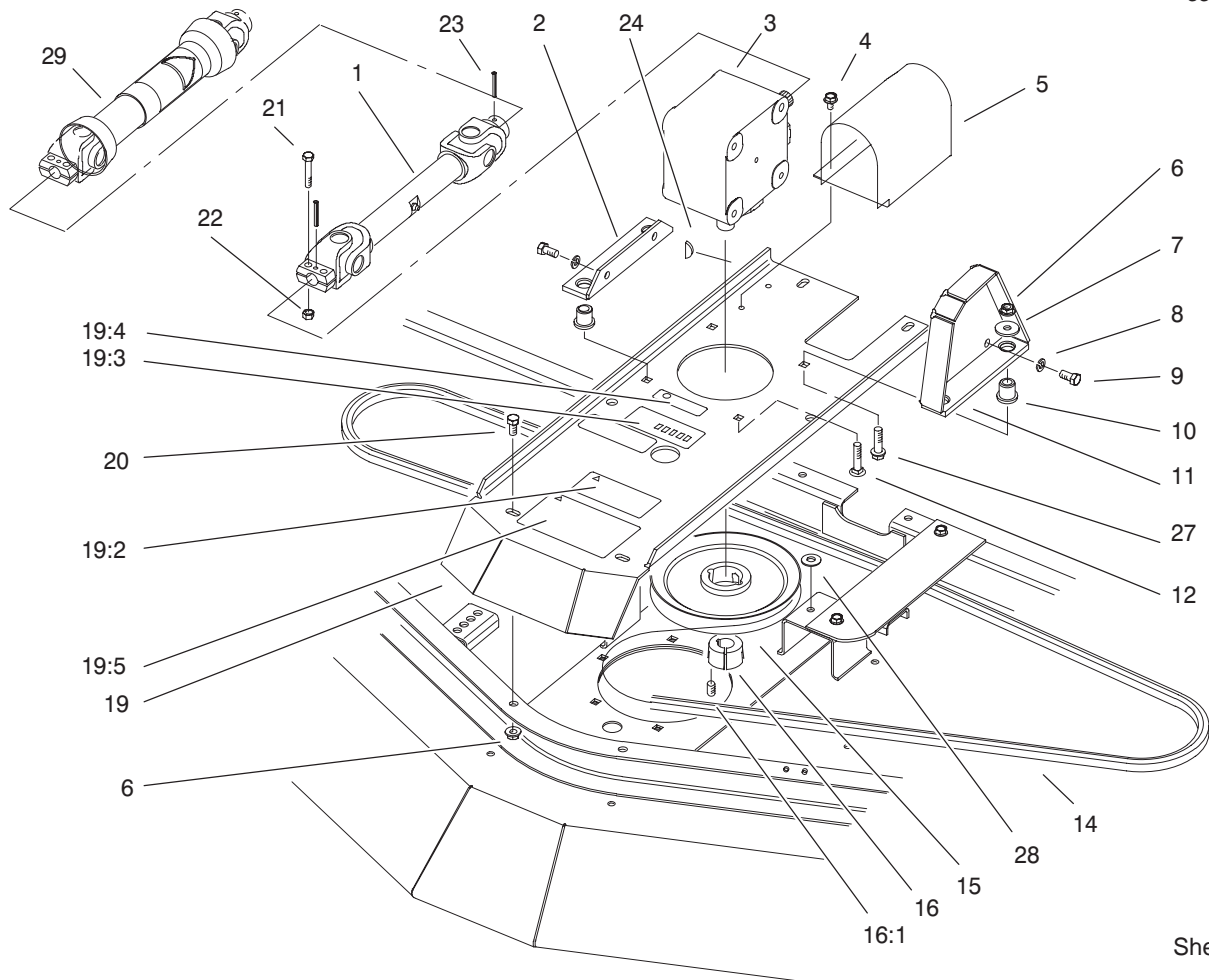
Sheet No.:5
T-3706

Spindle Assembly

Ref. No.	Part No.	Qty.	Description
☆1		3	Spindle ASM
6	3231-27	18	Screw-CARR
7	3256-24	6	Washer-Flat
9	32128-21	18	Nut-HF

Ref. No.	Part No.	Qty.	Description

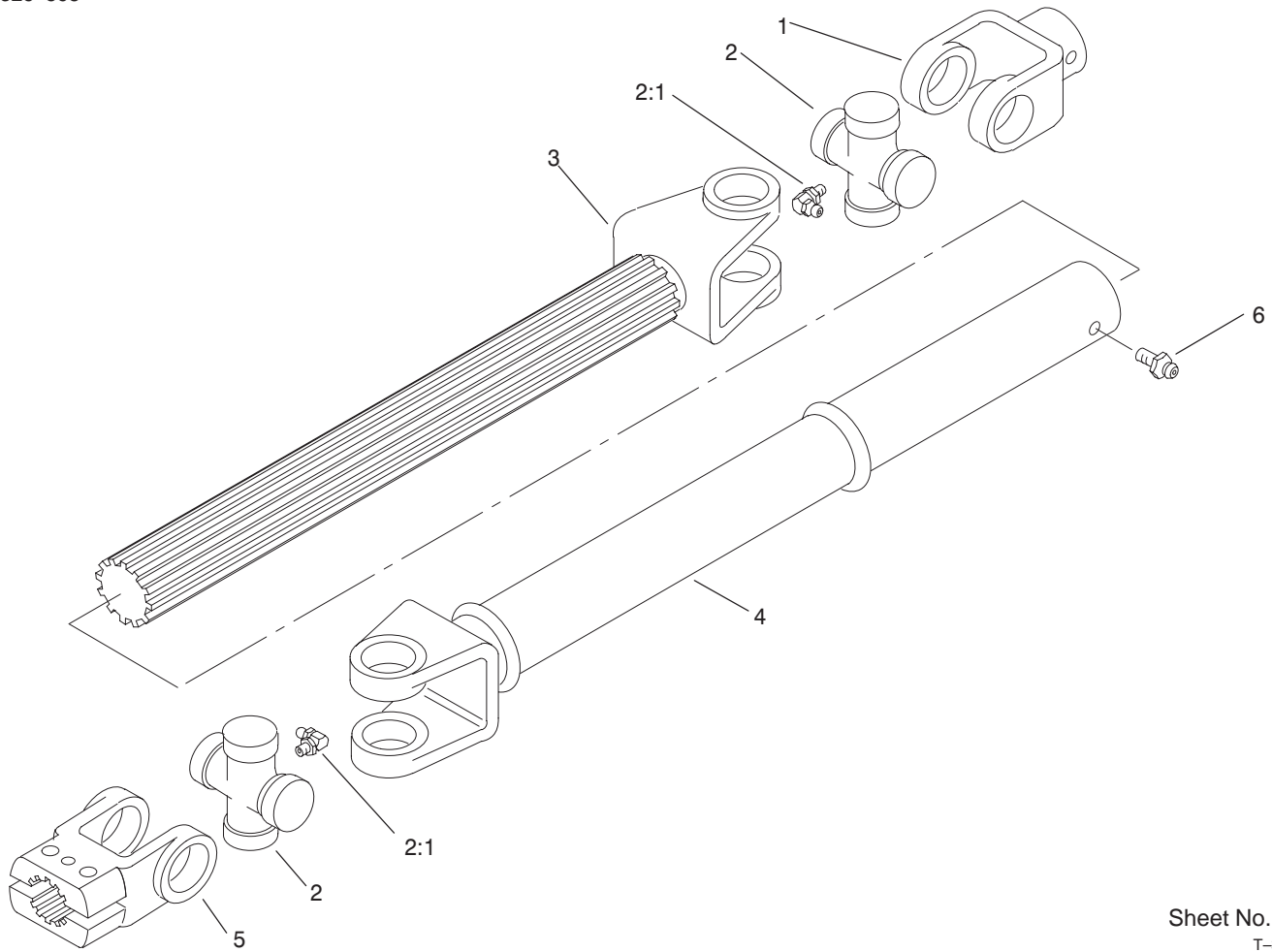
☆ Not serviced



Sheet No.:6

Gearbox and Drive Assembly

Ref. No.	Part No.	Qty.	Description	Ref. No.	Part No.	Qty.	Description
1	93-9962	1	Driveshaft (only on: 30716)	24	3257-5	1	Key-Woodruff
2	68-8560-03	1	Bracket-Gearbox	27	3234-18	1	Screw-HHF
3	104-3441	1	Box-Gear	28	3256-24	6	Washer-Flat (only on: 30716)
4	32104-82	2	Screw-HHF	29	93-9994	1	Driveshaft W/Guard (only on: 30716te)
5	93-9839-03	1	Shroud - Drive Shaft				
6	32128-21	10	Nut-HF				
7	63-8410	4	Washer				
8	3253-21	5	Washer-Lock				
9	323-4	5	Screw-HH				
10	63-9750	4	Mount				
11	85-6330-03	1	Bracket-Gearbox				
12	3231-26	3	Screw-CARR				
14	93-8457	1	V-Belt, Hex				
15	85-5860	1	Pulley-Gearbox				
16	23-1640	1	Bushing-Taperlock				
16:1	3247-4	2	Screw-Set				
19	94-9162	1	Plate ASM-Gearbox				
19:2	93-7818	1	Decal-Torque, Blade				
19:3	93-7826	1	Decal-HOC				
19:4	93-6697	1	Decal - Lube				
19:5	93-7809	1	Decal - Warning				
20	3234-11	6	Screw-HHF				
21	322-9	2	Screw-HH				
22	3296-29	2	Nut-Lock				
23	32121-34	2	Pin-Roll				

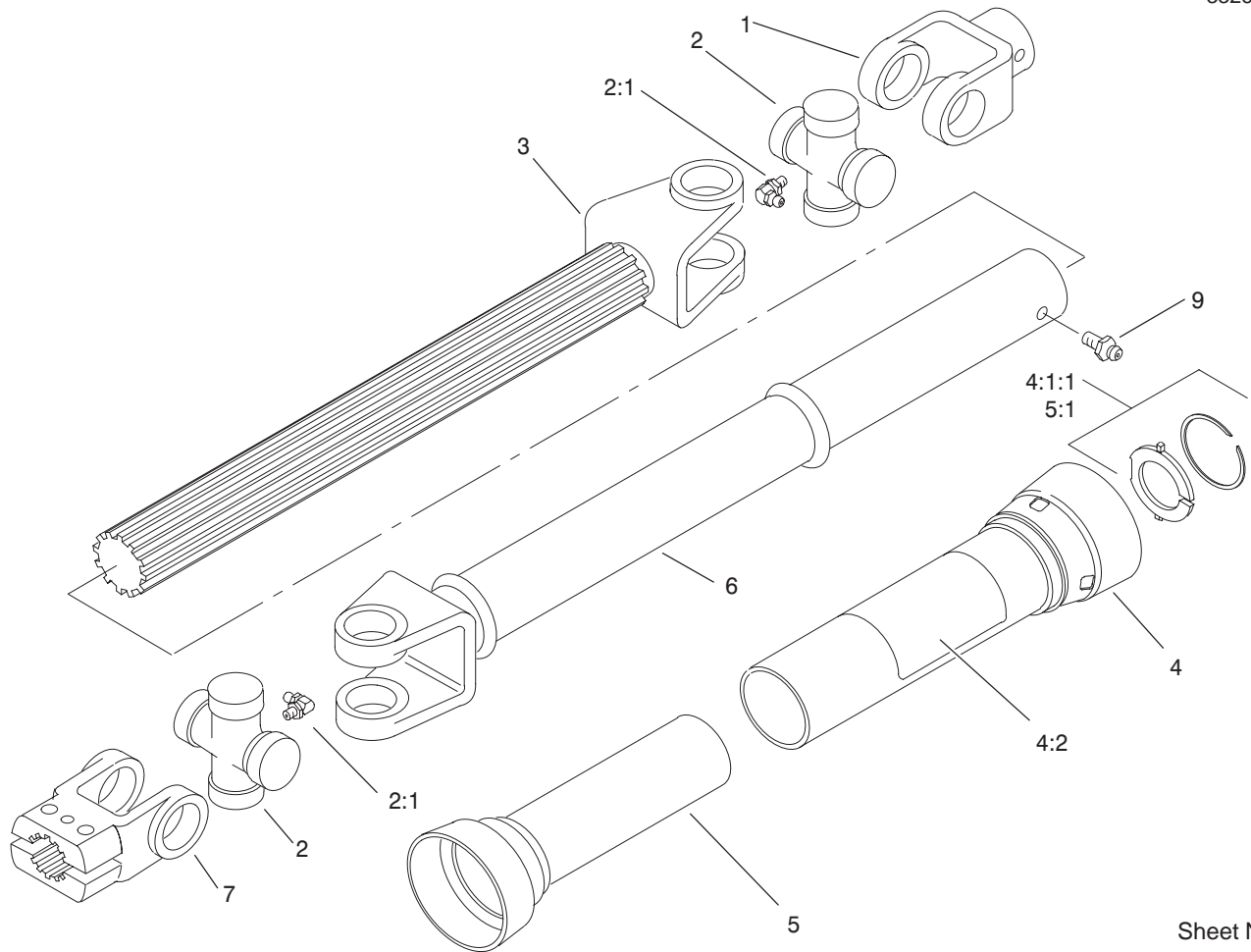


Sheet No.:A4
T-3708

Driveshaft Assembly No. 93-9962 (only on: 30716)

Ref. No.	Part No.	Qty.	Description
1	62-3800	1	Yoke-End
2	54-9180	2	U-Joint Kit
2:1	62-3820	1	Fitting-Grease
3	93-9957	1	Slip Yoke - Shaf
4	93-9961	1	Slip Yoke - Tube
5	54-9040	1	Yoke-End
6	302-58	1	Fitting - Grease

Ref. No.	Part No.	Qty.	Description



Sheet No.:A6
T-3709

Driveshaft with Guard Assembly No. 93-9994 (only on: 30716TE)

Ref. No.	Part No.	Qty.	Description
1	62-3800	1	Yoke-End
2	54-9180	2	U-Joint Kit
2:1	62-3820	1	Fitting-Grease
3	93-9957	1	Slip Yoke - Shaft
4	93-9984	1	Outer Guard, W/Decal
☆4:1		1	Guard - Outer
4:1:1	93-9958	1	Kit - Nylon Repair
4:2	93-7283	1	Decal-Danger
5	93-9960	1	Guard - Inner
5:1	93-9958	1	Kit - Nylon Repair
6	93-9961	1	Slip Yoke - Tube
7	54-9040	1	Yoke-End
9	302-58	1	Fitting - Grease

Ref. No.	Part No.	Qty.	Description

☆ Not serviced

