



BY APPOINTMENT TO
HER MAJESTY THE QUEEN
MANUFACTURERS OF HAYTER
HORTICULTURAL MACHINERY
TORO UK LIMITED, SPELLBROOK,
BISHOPS STORTFORD, HERTS

HAYTER

MAKERS OF THE FINEST MOWERS

Parts Catalogue

HARRIER 41 - PUSH

Ordering Replacement Parts

To order replacement parts, please supply the part number, the quantity, and the description of each part desired.

Understanding Reference Numbers

Each identified part in an illustration has a reference number. The reference number for a part also appears in the parts list, along with other information about the part.

This catalog uses two special reference number formats, one to indicate parts in a service assembly and another to indicate the quantity of a given part in an illustration.

Service Assembly Reference Numbers

Parts in service assemblies have reference numbers in the form a:b. The a represents the reference number of the entire service assembly and the b represents a sequential number unique to each part within the service assembly.

For example, a wheel assembly might be identified by reference number 6, the tire by 6:1, the valve by 6:2, and the wheel by 6:3. When you order the assembly identified by reference number 6, you receive all parts identified by reference numbers 6:1, 6:2, and 6:3. However, you may also order any part individually. Reference numbers of this type appear in illustration and in parts lists.

Reference Numbers Indicating Quantity

In an illustration, if a reference number indicates more than one part, the reference number has the form nX y. The n represents the quantity of the part, the X is the multiplication symbol, and the y represents the reference number.

For example, in an illustration, the reference number 2X 37 means that two of the parts identified by reference number 37 are indicated.

Contents

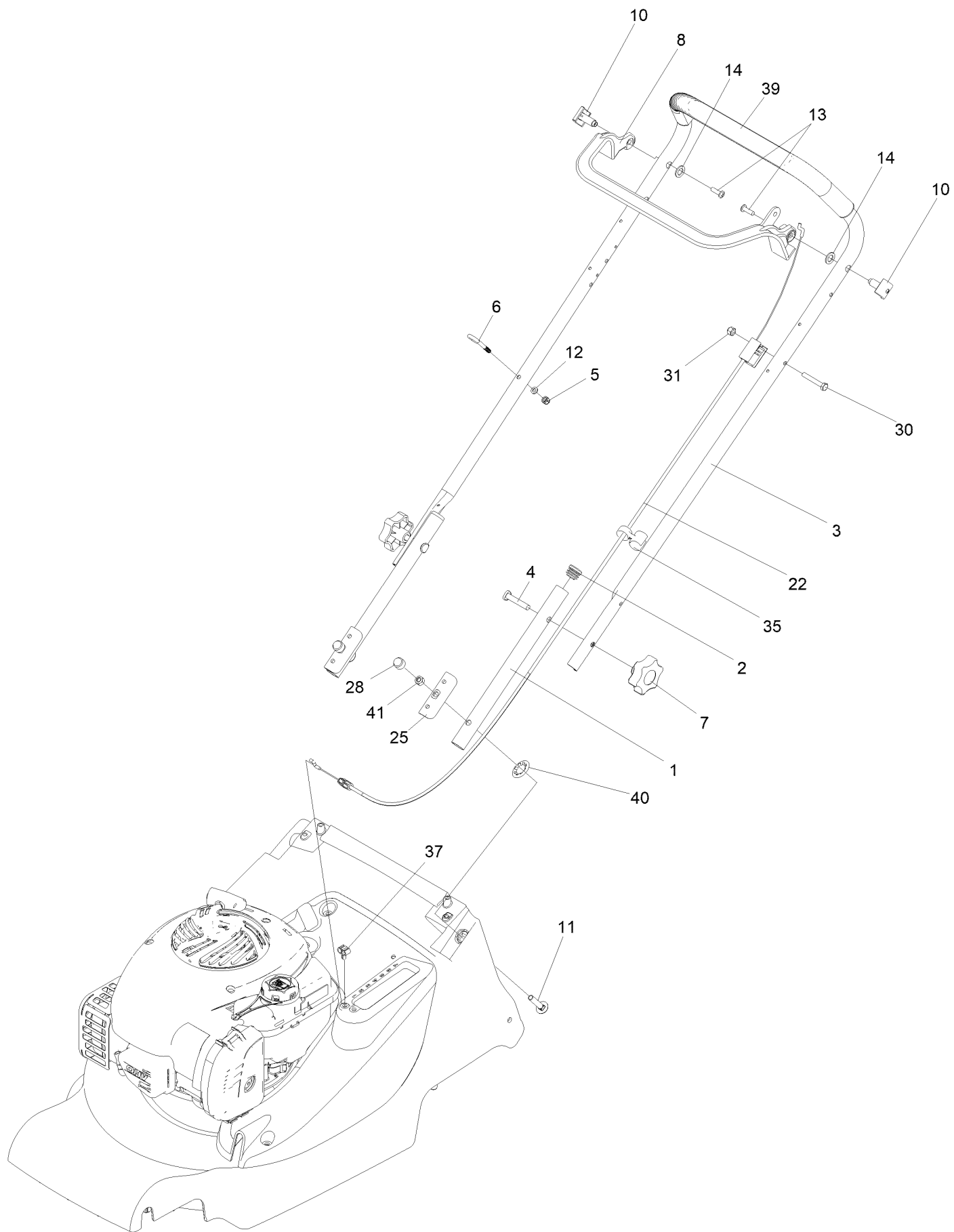
Handlebar and Controls 4

Engine and Blade 6

Deck and Grassbag 8

Traction, Suspension and HOC 10

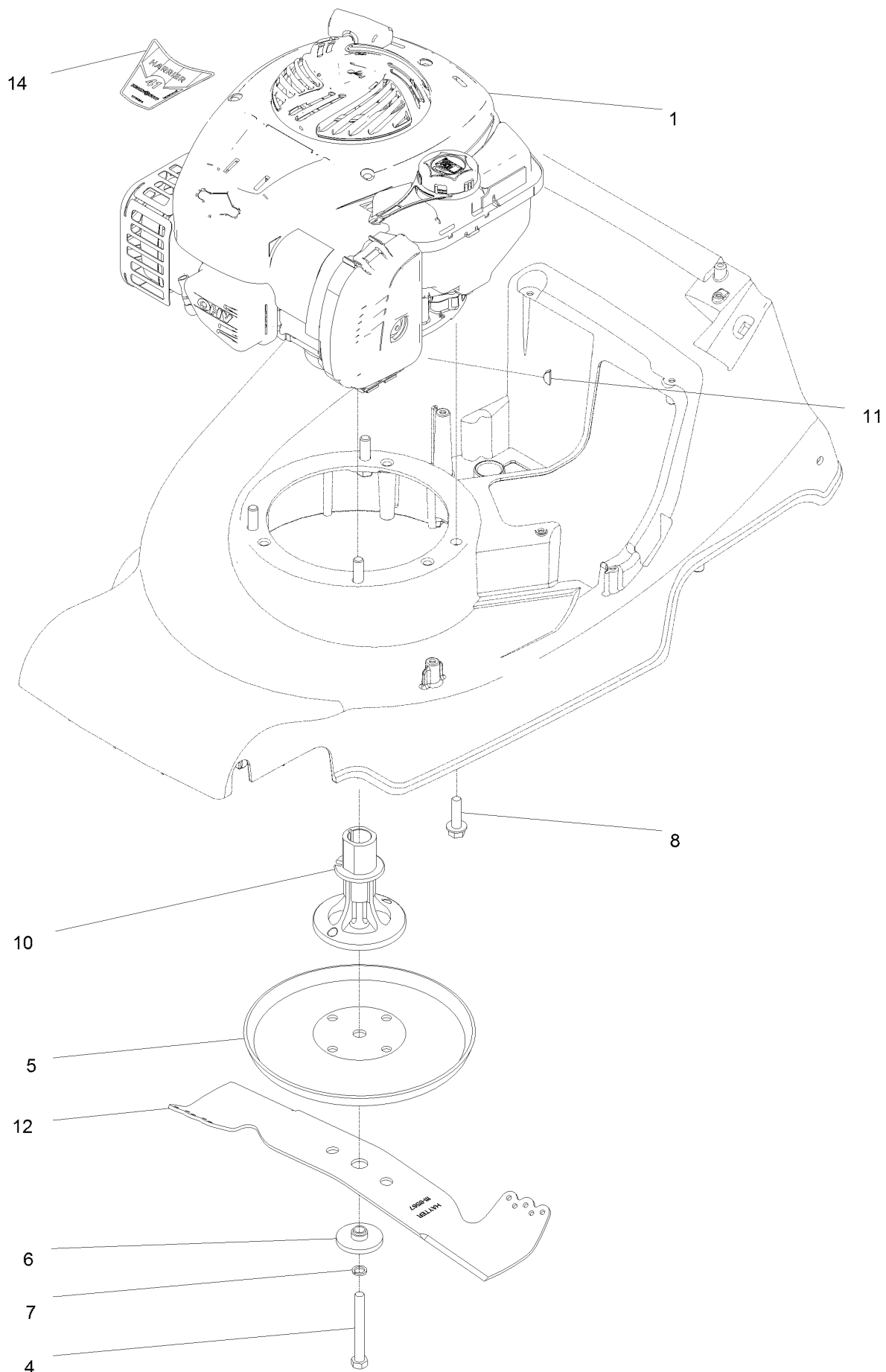
Handlebar and Controls



Handlebar and Controls (continued)

<i>Ref.</i>	<i>Part Number</i>	<i>Qty.</i>	<i>Description</i>	<i>Ref.</i>	<i>Part Number</i>	<i>Qty.</i>	<i>Description</i>
1	111-9837-03	2	Handlebar Lower	14	09688	2	Washer-Nylon
2	300160	2	Plug-Tube	22	111-9441	1	Cable Engine Brake
3	111-9947-03	1	Upper Handlebar	25	340028	2	Plate-Clamp, Handlebar
4	HY226024	2	Bolt-Handlebar	28	HY234051	2	Cap-Nut
5	09544	1	Nut-Nyloc	30	05010	1	Bolt
6	305093	1	Guide-Rope	31	137-3088	1	Nut-Hex
7	480088	2	Knob-Handlebar	35	410037	1	Guide-Cable
8	111-9662	1	OPC Lever - Engine	37	111-8696	1	Clip-Conduit, Twin
10	340182	2	Pin-Pivot	39	111-8716	1	"handle, Soft Grip"
11	09379	2	Bolt-Coach	40	04020	2	Grip-Fix
12	09472	1	Washer-Plain	41	09441	2	Nut-Hex, NI
13	09687	2	Screw				

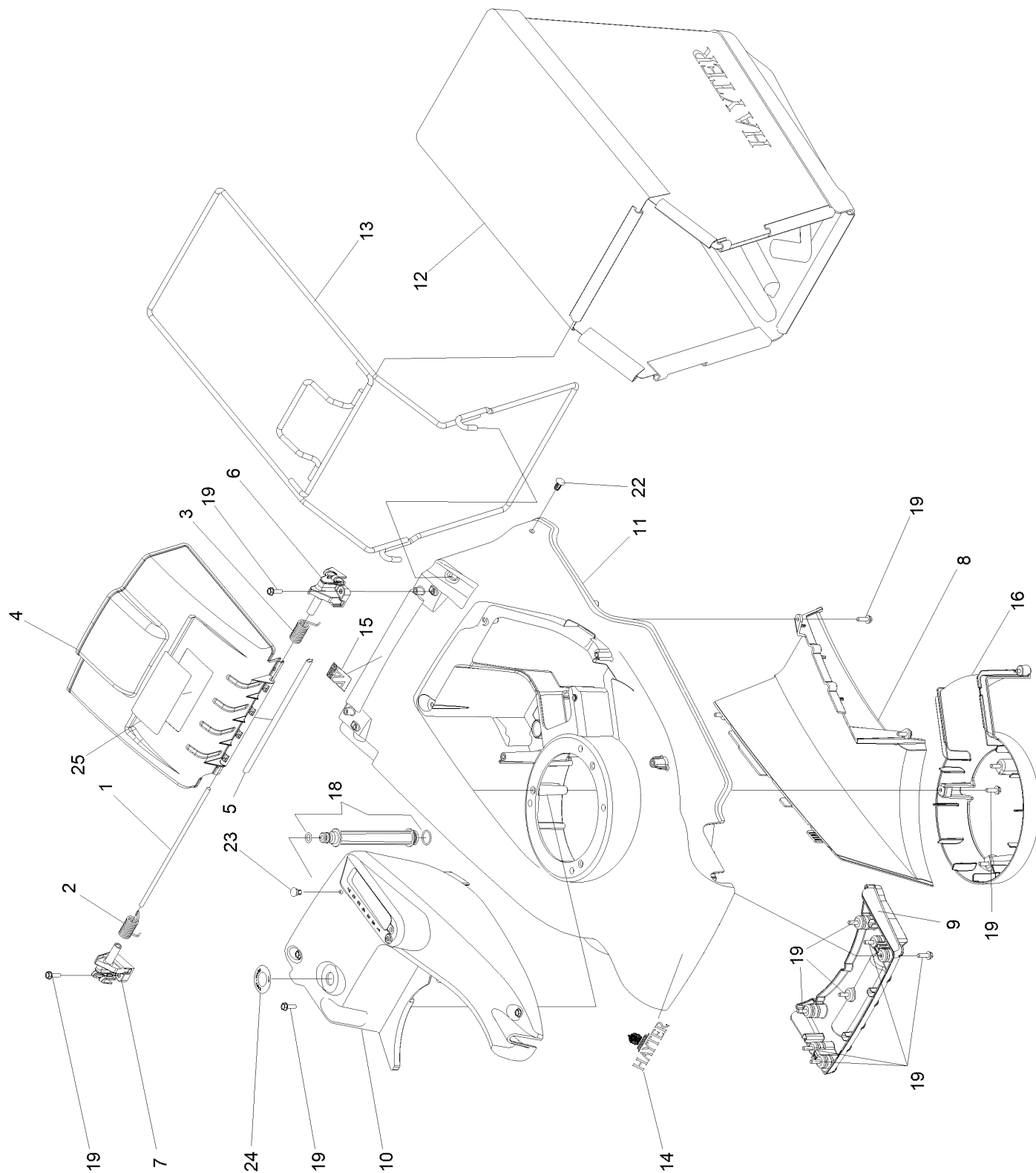
Engine and Blade



Engine and Blade (continued)

<i>Ref.</i>	<i>Part Number</i>	<i>Qty.</i>	<i>Description</i>	<i>Ref.</i>	<i>Part Number</i>	<i>Qty.</i>	<i>Description</i>
1	134-3630	1	Engine-B&s 575Ex Stage 5	8	09349	3	Screw-Taptite, Unc
4	134-1680	1	Bolt	10	131-4341	1	"boss, Autodrive"
5	410057W	1	Disc-Friction	11	1662	1	Key-Woodruff
6	HY4014	1	Spacer-Distance, Cutterbar	12	111-8567	1	Cutterbar Harrier 41
7	134-3191	1	Washer-Lock	14	111-9429	1	Decal-Harrier 41 Push

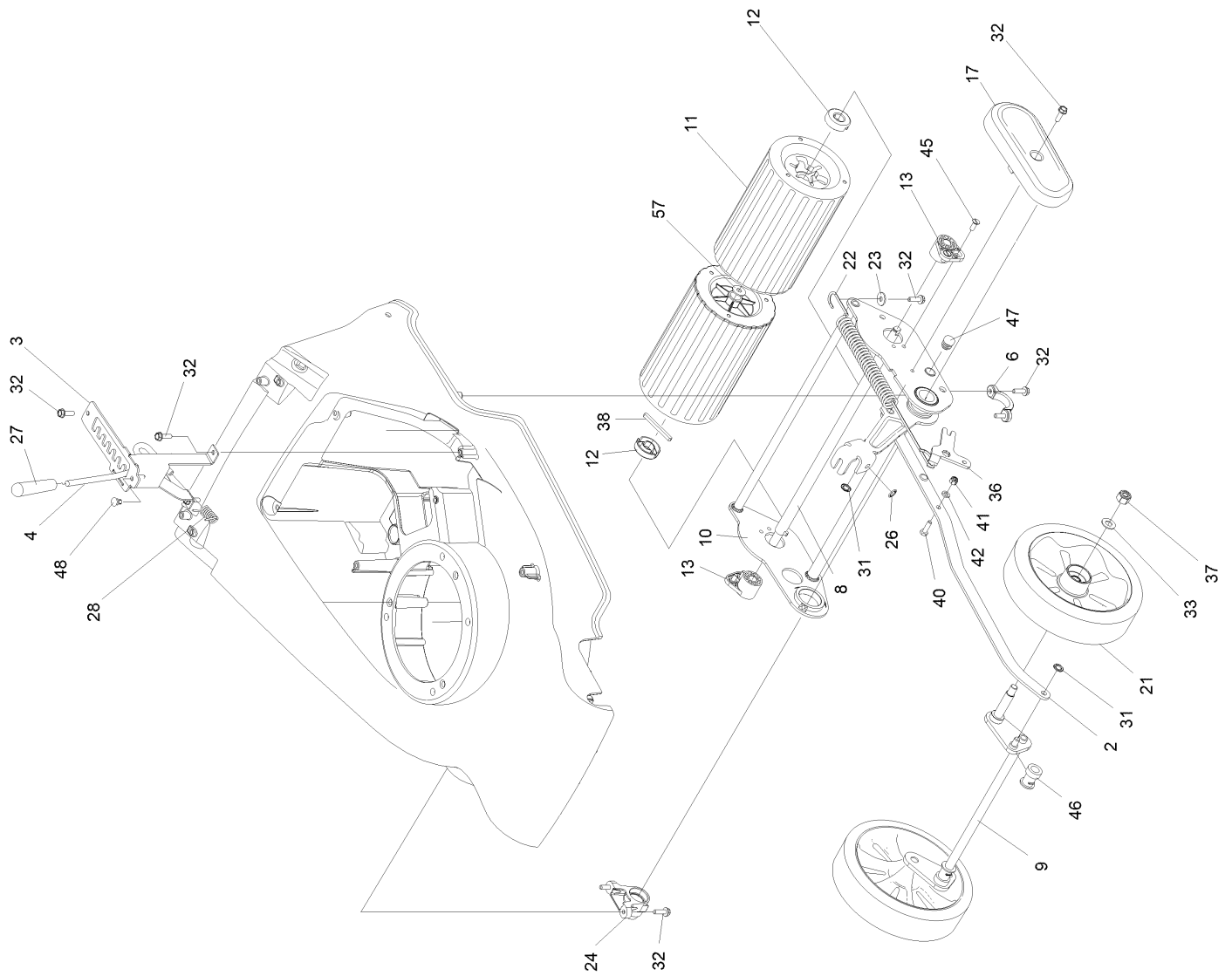
Deck and Grassbag



Deck and Grassbag (continued)

<i>Ref.</i>	<i>Part Number</i>	<i>Qty.</i>	<i>Description</i>	<i>Ref.</i>	<i>Part Number</i>	<i>Qty.</i>	<i>Description</i>
1	111-8545	1	Deflector Rod	12	111-8549	1	Fabric Grassbag 41
2	111-8544	1	Spring-Deflector, Right	13	111-8558-03	1	Frame Grassbag 41
3	111-8543	1	Spring-Deflector, Left	14	134-0051	1	Logo-Hayter
4	134-0417	1	Rear Deflector	15	111-7722	1	Made In Britain Decal
5	111-8540	1	Rear Deflector Seal	16	111-8578	1	Blade Blocking Wall
6	111-8541	1	Mount-Deflector, Left	18	111-8659	1	Washport Adapter Assembly
7	111-8542	1	Deflector Mount Right	19	09575	21	Screw-Taptite
8	111-8537	1	Throw Plate	22	111-9831	2	Plastic Fir Tree Rivet 8.7MM
9	111-8536	1	Front Fins	23	341033	1	Fastener-Drive
10	111-8538	1	Top Trim	24	111-9937	1	Decal-Easy Wash
11	111-8535-08	1	Harrier 41 Deck	25	134-0400	1	Decal - Safety Petrol

Traction, Suspension and HOC



Traction, Suspension and HOC (continued)

<i>Ref.</i>	<i>Part Number</i>	<i>Qty.</i>	<i>Description</i>	<i>Ref.</i>	<i>Part Number</i>	<i>Qty.</i>	<i>Description</i>
2	111-9459	1	Connecting Rod Wa	27	480134	1	Knob-HOC
3	111-8675	1	HOC Tower Assembly	28	480132	1	Spring-Torsion, HOC
4	111-8705	1	Lever-HOC	31	0201086	2	Washer-Starlock
6	111-8670	1	Axle- Support, Rear	32	09575	9	Screw-Taptite
8	111-8601	1	Roller Shaft	33	09479	2	Washer-Plain
9	134-6055	1	Front Axle Assembly HD	36	111-9003	1	Spring Load Lever
10	134-2160-03	1	Rear Axle Frame Assembly	37	09447	2	Nut
11	111-8598	2	Roller Half Assembly	38	111-8607	2	Drive Key
12	111-9720	2	Spacer, Rear Roller - Push	40	09363	1	Screw-HH
13	134-0049	2	Bearing	41	09544	1	Nut-Nyloc
17	111-8546	1	Chain Guard	42	09472	1	Washer-Plain
21	111-8858	2	Wheel 8", Pvc Tyre	45	134-0050	4	Screw-Taptite
13	134-2635	2	Bush, Rear Roller	46	410069	2	Bearing-Axle, Front
22	410050	1	Spring-Counter Balance	47	111-9933	1	Plastic Round Insert
23	09263	1	Washer	48	134-0262	1	Rivet-Push, Plastic
24	111-8576	1	Rear Frame Bearing Mount	57	108-0015	1	Washer-Flat
26	04020	1	Grip-Fix				

