



48 Inch Dozer Blade

Wheel Horse® Classic Garden Tractor

Model No. 79364—220000001 and Up

Parts Catalog

Ordering Replacement Parts

To order replacement parts, please supply: the part number, the quantity, and the description of each part desired.

Understanding Reference Numbers

Each identified part in an illustration has a reference number. The reference number for a part also appears in the parts list, along with other information about the part.

This catalog uses two special reference number formats, one to indicate parts in a service assembly and another to indicate the quantity of a given part in an illustration.

Service Assembly Reference Numbers

Parts in service assemblies have reference numbers in the form **a:b**. The **a** represents the reference number of the entire service assembly and the **b** represents a sequential number unique to each part within the service assembly.

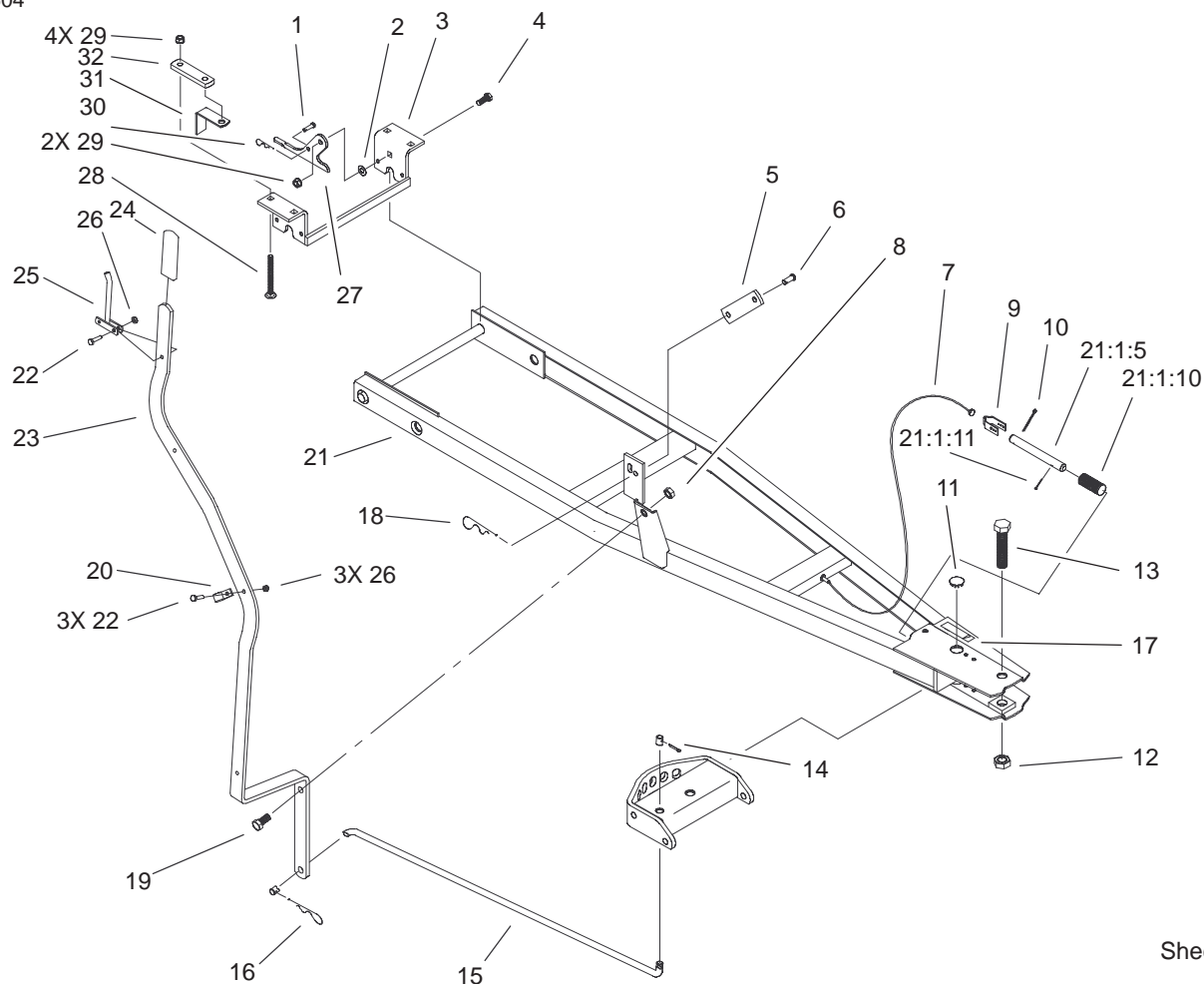
For example, a wheel assembly might be identified by reference number **6**, the tire by **6:1**, the valve by **6:2**, and the wheel by **6:3**. When you order the assembly identified by reference number **6**, you receive all parts identified by reference numbers **6:1**, **6:2**, and **6:3**. However, you may also order any part individually.

Reference numbers of this type appear in illustrations and in part lists.

Reference Numbers Indicating Quantity

In an illustration, if a reference number indicates more than one part, the reference number has the form **nX y**. The **n** represents the quantity of the part, the **X** is the multiplication symbol, and the **y** represents the reference number.

For example, in an illustration, the reference number **2X 37** means that two of the parts identified by reference number **37** are indicated.

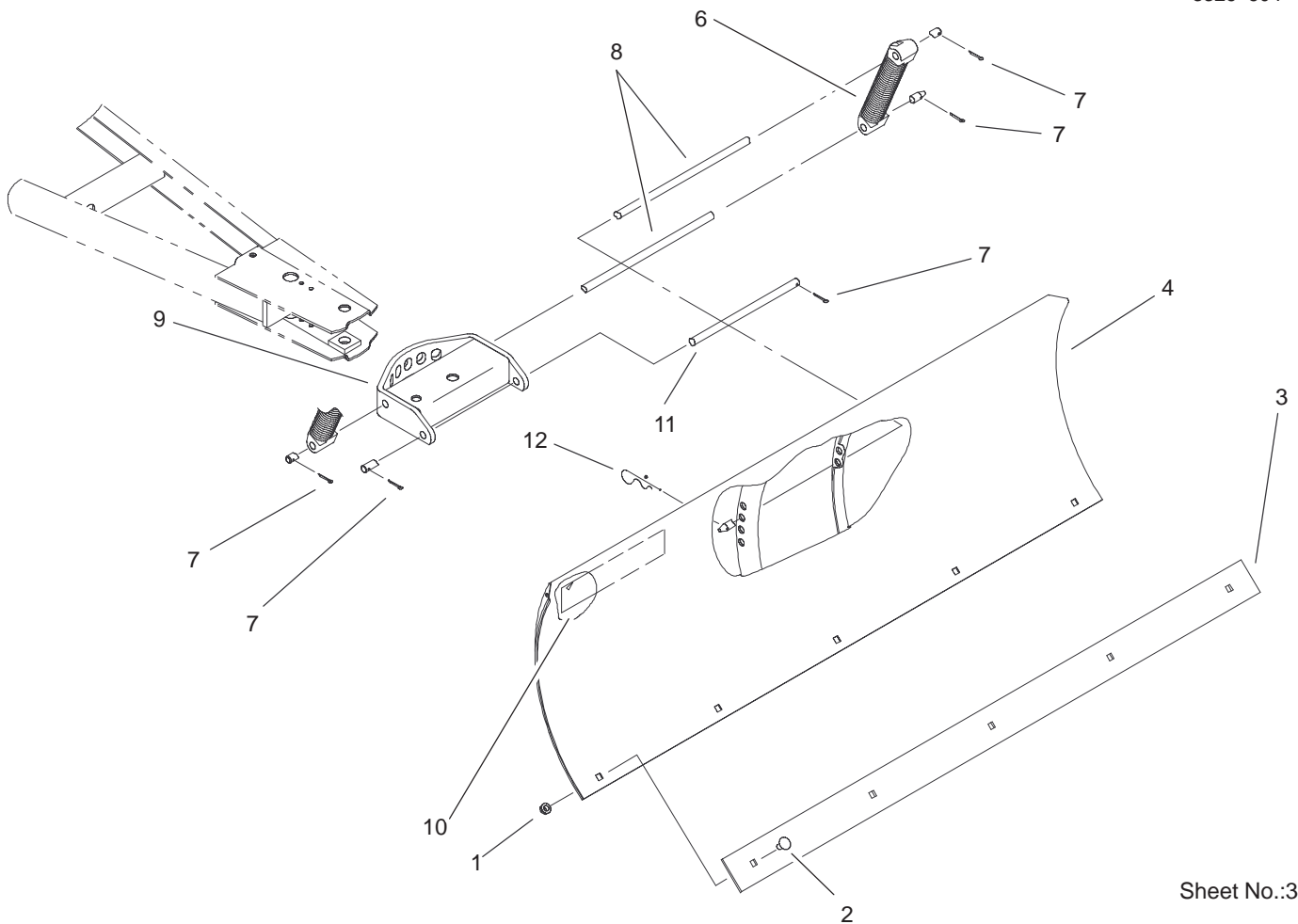


Sheet No.:2

Frame Assembly

Ref. No.	Part No.	Qty.	Description
1	9321204	2	Pin-Clevis
2	3256-24	2	Washer-Flat
3	104659-01	1	Bracket-Axle
4	3231-25	2	Screw-CARR
5	105052	1	Link-Lift
6	283-2	2	Pin-Clevis
7	105-1480	1	Cable-Indexing, Dozer
8	3218-18	1	Nut-Jam
9	94-7782	1	Bracket - Cable End
10	3272-12	1	Pin-Cotter
11	4944	2	Plug
12	9156404	1	Nut-Lock
13	3216-7	1	Screw-HH
14	3272-11	1	Pin-Cotter
15	104338	1	Rod
16	9335124	1	Pin-Hair
18	9335054	2	Pin-Hair
19	325-4	1	Screw-HH
20	2412-32	3	R-Clamp-Throttle/ Choke
21	104-5039-01	1	Frame
21:1:5	88-6520	1	Pin-Index
21:1:10	2354	1	Spring-Compression
21:1:11	3272-11	1	Pin-Cotter
22	321-6	4	Screw-HH
23	104-4685-01	1	Lever-Index

Ref. No.	Part No.	Qty.	Description
24	5359	1	Grip
25	98-1743	1	Lever
26	32146-17	4	Nut-Lock
27	104657	2	Plate-Latching
28	3231-11	4	Screw-CARR
29	3296-39	6	Nut-Lock, NI
30	9335044	2	Pin-Hair
31	7713	2	Spacer-Bracket
32	3697	2	Bracket-Rear Link Mounting



Sheet No.:3

Blade Assembly

Ref. No.	Part No.	Qty.	Description
1	3296-39	5	Nut-Lock, NI
2	3231-1	5	Screw-CARR
3	93-1612-01	1	Plate - Blade Edge
4	78-1330-01	1	Blade ASM
6	105-1386-03	2	Lug/Spring ASM
7	3272-11	5	Pin-Cotter
8	5120	2	Rod-Blade Pivot
9	78-8760-01	1	Quadrant
10	92-8748	1	Decal-Attachment
11	4564	1	Rod-Lower Plated
12	9335124	1	Pin-Hair

Ref. No.	Part No.	Qty.	Description

