



## Seeder Box Kit

Dingo® Soil Cultivator

Model No. 23120

### Installation Instructions

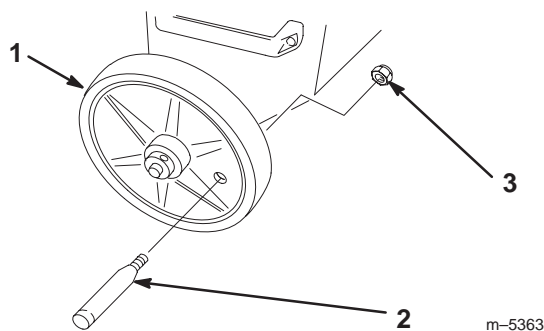
## Loose Parts

**Note:** Use the chart below to identify parts for assembly.

| Description                  | Qty. | Use                         |
|------------------------------|------|-----------------------------|
| Seeder box                   | 1    | Installing the wheel handle |
| Wheel handle                 | 1    |                             |
| Nut, M8                      | 1    |                             |
| Lever handle                 | 1    | Installing the lever handle |
| Bolt, small                  | 1    |                             |
| Mounting bracket, right hand | 1    | Installing the Seeder Box   |
| Mounting bracket, left hand  | 1    |                             |
| Bolt, M10 x 35 mm            | 8    |                             |
| Locknut, M10                 | 8    |                             |
| Bolt, M12 x 60 mm            | 2    |                             |
| Locknut, M12                 | 2    |                             |

## Installing the Wheel Handle

Insert the stud on the handle through the wheel and secure in with a nut (M8) (Fig. 1).

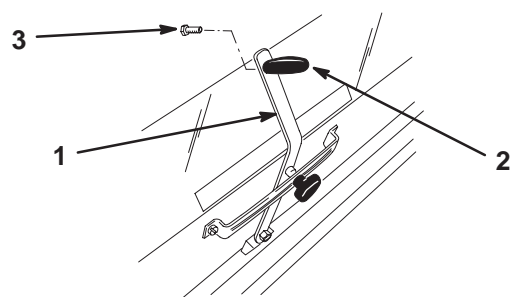


**Figure 1**

- 1. Wheel
- 2. Handle
- 3. Nut

## Installing the Lever Handle

Install the lever handle to the lever on the front of the seeder box using the small bolt (Fig. 2).



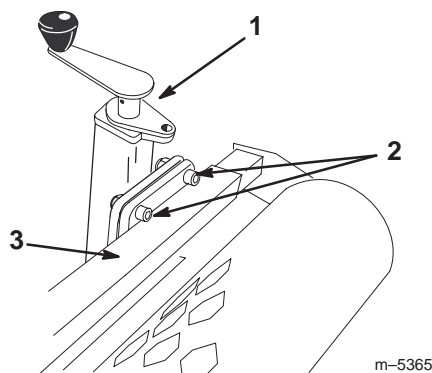
**Figure 2**

- 1. Lever
- 2. Lever handle
- 3. Small bolt

# Installing the Mounting Brackets

1. Loosen the 8 bolts and nuts securing the scraper to the soil cultivator (Fig. 3).

**Note:** There are 4 bolts on each side of the scraper, directly under the scraper adjustment cranks.



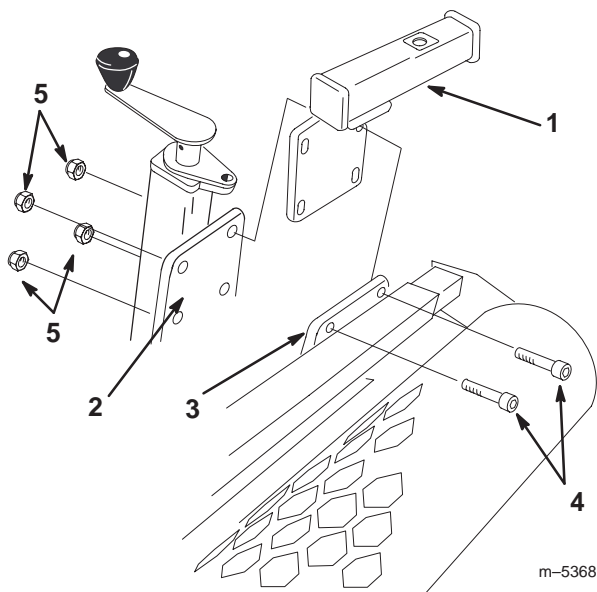
**Figure 3**

(Only the left side of the cultivator is illustrated)

- |  |               |
|--|---------------|
| 1. Left side, scraper adjustment crank   | 3. Roller bar |
| 2. Bolts securing the scraper (2 additional bolts not shown secure the scraper beneath the roller bar) |               |

2. Remove and discard 4 bolts and nuts from one side of the scraper (Fig. 3).
3. Remove the brackets and fasteners from the seeder box mounting pockets (Fig. 5).
4. Slide the appropriate mounting bracket between the scraper mounting plate and the cultivator mounting plate on one side of the cultivator (Fig. 4).

**Note:** The brackets should extend toward the outside of the machine.



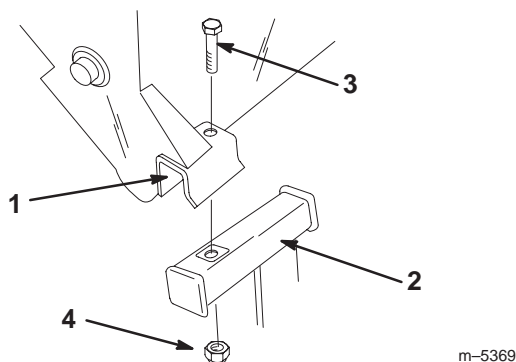
**Figure 4**

(Only the left side of the cultivator is illustrated)

- |                              |                      |
|------------------------------|----------------------|
| 1. Mounting bracket          | 4. Bolt, M10 x 35 mm |
| 2. Scraper mounting plate    | 5. Locknut, M10      |
| 3. Cultivator mounting plate |                      |

5. Slide the 4 bolts (M10 x 35 mm) through the cultivator mounting plate, bracket, and scraper mounting plate, capping them with 4 locknuts (M10) (Fig. 4). **Do not tighten them.**
6. Repeat steps 2 through 5 for the other side of the scraper.

7. Install the seeder box over the brackets (Fig. 5).



**Figure 5**

(Only the left side of the seeder box is illustrated)

- |                               |                   |
|-------------------------------|-------------------|
| 1. Seeder box mounting pocket | 3. Bolt, M12 x 60 |
| 2. Mounting bracket           | 4. Locknut, M12   |

8. Secure the seeder box to the mounting brackets using 2 bolts (M12 x 60) and locknuts (M12) (Fig. 5).
9. Torque the 2 bolts and locknuts 59 to 73 ft.-lb. (80 to 100 N·m).
10. Torque the 8 bolts and locknuts securing the mounting brackets and scraper to 34 to 42 ft.-lb. (47 to 57 N·m).

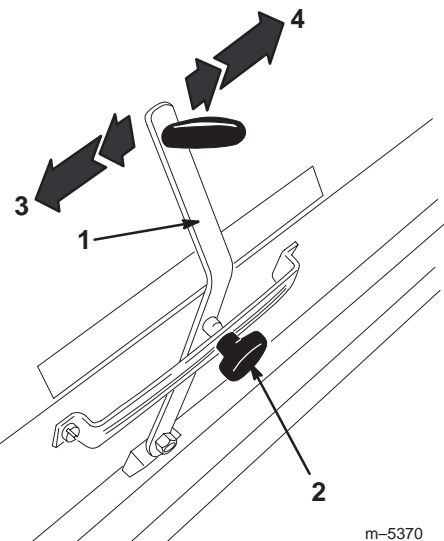
## Removing the Seeder Box

Remove the 2 bolts and locknuts securing the seeder box to the mounting brackets and remove the box.

Leave the mounting brackets installed on the cultivator for future uses of the seeder box.

## Adjusting the Seed Drop Rate

1. Loosen the knob on the front of the adjustment lever assembly on the front of the seeder box (Fig. 6).



**Figure 6**

- |                     |                       |
|---------------------|-----------------------|
| 1. Adjustment lever | 3. Decrease flow rate |
| 2. Knob             | 4. Increase flow rate |

2. Slide the lever to the desired setting (Fig. 6).

The seeder box is labeled with settings from 0 to 20. 0 indicates that no seed will drop; 20 is a drop rate of approximately 12.5 lb. of grass seed per 1000 sq. ft. of ground (61 Kg per 1000 m<sup>2</sup>). You may need to experiment to obtain the seed drop rate that suits your needs.

**Important** Only use the seeder box to dispense lawn seeds, such as grasses. Larger seeds may clog the seeder box.

3. Tighten the knob (Fig. 6).

