



Count on it.

Parts Catalog

48in Snowthrower

GrandStand® Multi Force® Mower

Model No. 78598—Serial No. 40000000 and Up



Ordering Replacement Parts

To order replacement parts, please supply the part number, the quantity, and the description of each part desired.

Understanding Reference Numbers

Each identified part in an illustration has a reference number. The reference number for a part also appears in the parts list, along with other information about the part.

This catalog uses two special reference number formats, one to indicate parts in a service assembly and another to indicate the quantity of a given part in an illustration.

Service Assembly Reference Numbers

Parts in service assemblies have reference numbers in the form a:b. The a represents the reference number of the entire service assembly and the b represents a sequential number unique to each part within the service assembly.

For example, a wheel assembly might be identified by reference number 6, the tire by 6:1, the valve by 6:2, and the wheel by 6:3. When you order the assembly identified by reference number 6, you receive all parts identified by reference numbers 6:1, 6:2, and 6:3. However, you may also order any part individually. Reference numbers of this type appear in illustration and in parts lists.

Reference Numbers Indicating Quantity

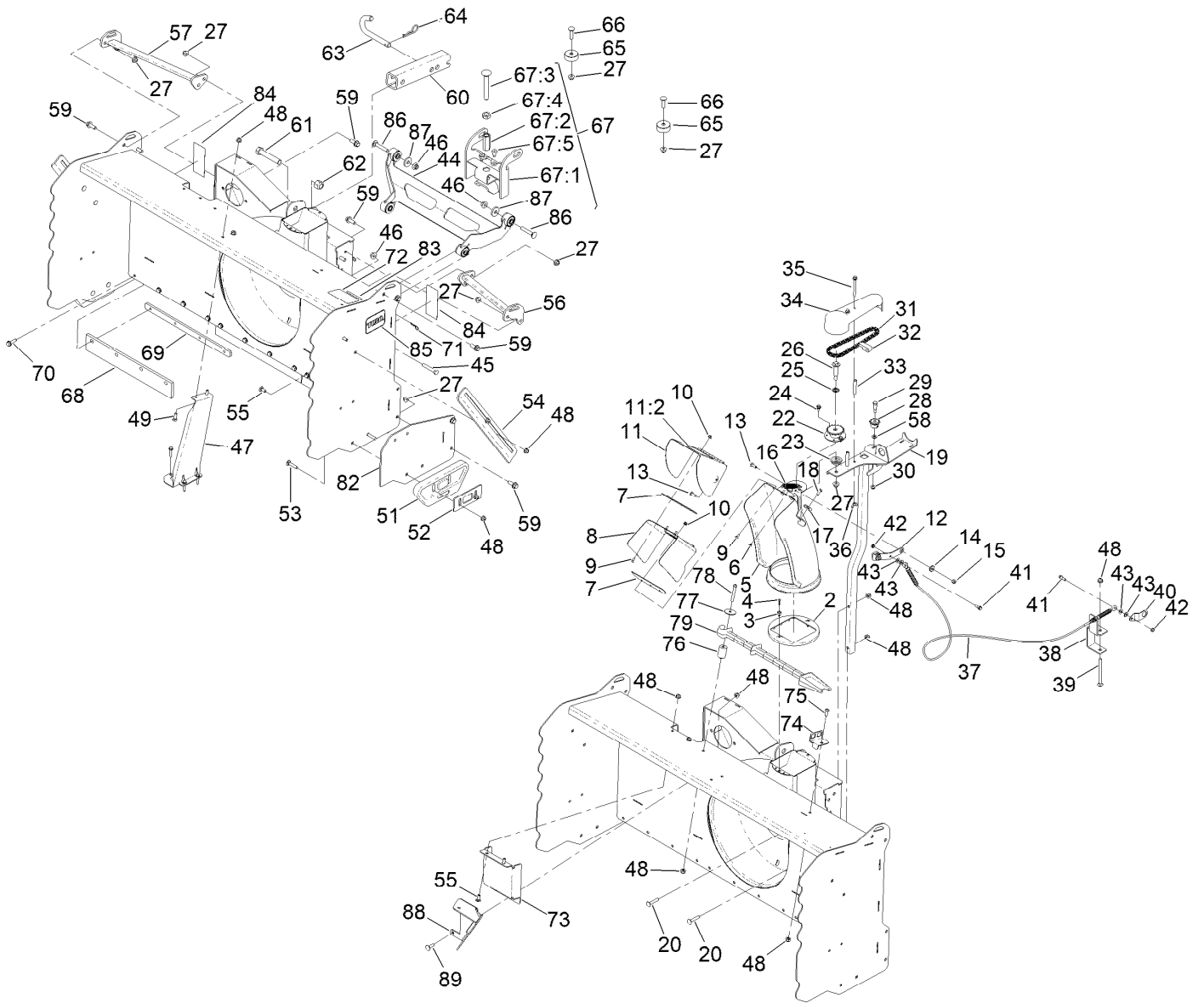
In an illustration, if a reference number indicates more than one part, the reference number has the form nX y. The n represents the quantity of the part, the X is the multiplication symbol, and the y represents the reference number.

For example, in an illustration, the reference number 2X 37 means that two of the parts identified by reference number 37 are indicated.

Contents

Housing and Chute Assembly 4
Auger Assembly 6
Auger Gearcase Assembly No. 140-5439 8
Hydraulic Hose Assembly 10
High Flow Case Drain Assembly No. 136-7436 12

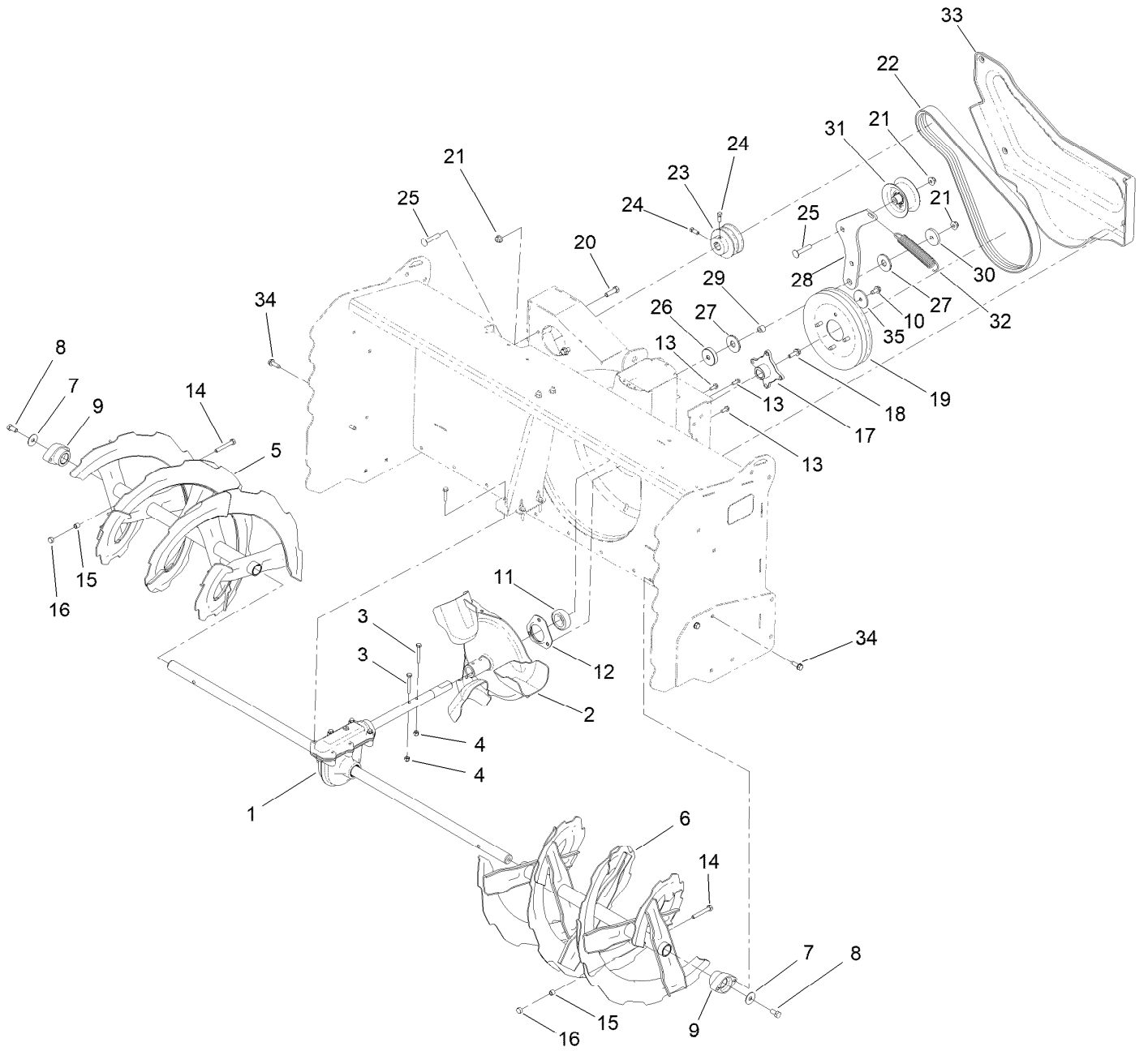
Housing and Chute Assembly



Housing and Chute Assembly (continued)

<i>Ref.</i>	<i>Part Number</i>	<i>Qty.</i>	<i>Description</i>	<i>Ref.</i>	<i>Part Number</i>	<i>Qty.</i>	<i>Description</i>
2	136-6515	1	Guide-Chute	48	104-8300	19	Nut-HF, NI
3	136-6586	2	Grommet-Screw	49	322-3	2	Screw-HH
4	94-4496	2	Screw-PPH	51	140-1097	2	Skid
5	136-6580-01	1	Lower Chute ASM	52	140-1096-03	2	Plate-Skid, Mount
6	138-3651	1	Plug-Plastic	53	3230-4	4	Bolt-CARR
7	138-3671	2	Gasket-Deflector	54	121-1228-03	2	Breaker-Drift, Side
8	136-6582-01	1	Middle Deflector ASM	55	137-3061	6	Bolt-CARR
9	135-1929	6	Bolt-CARR	56	140-7780-01	1	Cross Support ASM, LH [red]
10	138-0719	6	Nut-HF	57	140-7781-01	1	Cross Support ASM, RH [red]
11	139-1564	1	Deflector ASM	58	AUH426767	1	Washer-Flat
11:2	121-6847	1	Decal-Danger	59	3234-42	12	Screw-HHF
12	140-7766	1	Link-Deflector	60	139-7555-03	1	Tube-Hitch
13	138-0689	2	Screw-PH	61	327-14	1	Screw-HH
14	138-0687	2	Bushing-Pivot	62	3296-53	1	Nut-Lock, NI
15	137-3094	2	Nut-Hex	63	133-2085	1	Pin-Attach
16	132-6915	1	Spring-Extension	64	3290-343	1	Pin-Hair
17	136-7191	1	Clamp-Cable	65	139-7629	2	Block - Stop
18	32144-85	1	Screw-HWH	66	127-2351	2	Screw-CARR
19	140-5440-03	1	Post-Chute, ASM [black]	67	140-9454	1	Down Stop Kit
20	137-3063	2	Bolt-Car	67:1	136-8312-01	1	Lock Bracket ASM
22	139-7642-03	1	Sprocket-18 Teeth [black]	67:2	136-8392	1	Hex-Threaded
23	106-4422	1	Spacer-Chute	67:3	112-8046	1	Bolt-Carriage
24	46-6810	2	Screw And Washer ASM	67:4	3218-6	1	Nut-Jam
25	108-5059	1	Spacer-Bushing	67:5	87-8460	2	Bumper-Rubber
26	56-6591	1	Screw-Shoulder, HWH	68	140-7772	3	Scraper-Poly
27	104-8301	15	Nut-HF, NI	69	140-7773-03	3	Retainer-Scraper
28	140-5454	1	Sprocket	70	32144-49	12	Screw-HWHTF
29	119-2309	1	Bolt-Shoulder	71	9335044	4	Pin-Hair
30	104-7201	1	Nut-HF, NI	72	121-6817	1	Decal-Danger, Auger
31	139-7645	1	Chain Drive ASM	73	140-7787-01	1	Plate-Cover
32	139-7619	1	Block-Link, Chain	74	138-0724-03	1	Bracket-Stick, Cleanout
33	116-7224	2	Spacer	75	3274-55	1	Screw-HSBH
34	140-7728	1	Cover - Chain	76	108-2301	1	Spacer
35	138-3653	2	Screw-HHF	77	115-1151	1	Washer-Flat
36	1-543792	2	Wingnut	78	115-7260	1	Screw-HSBH
37	140-4261	1	Cable-Control, Chute	79	110-3408	1	Stick-Cleanout
38	140-7742-03	1	Bracket, Cable-Chute	82	140-9488-01	2	Side Plate - Snowblower 48
39	106-9758	1	Screw-CARR	83	133-8061	1	Decal-Warning
40	140-7756	1	Bracket, Cable-Chute	84	108-8014	2	Tape-Reflective (Red)
41	42-3560	2	Bolt-Shoulder	85	70-2200	2	Decal
42	3296-56	2	Nut-Lock, NI	86	3231-7	2	Screw-CARR
43	3256-22	4	Washer-Flat	87	1-373034	2	Washer
44	139-7575	1	Snowthrower Strut ASM	88	144-6961-01	1	Plate, Kicker-Snowblower
45	323-11	2	Screw-HH	89	3230-2	2	Bolt-CARR
46	32128-19	4	Nut-HF Lock, Large Flg				
47	140-7786-03	1	Bracket-Gearbox, Support				

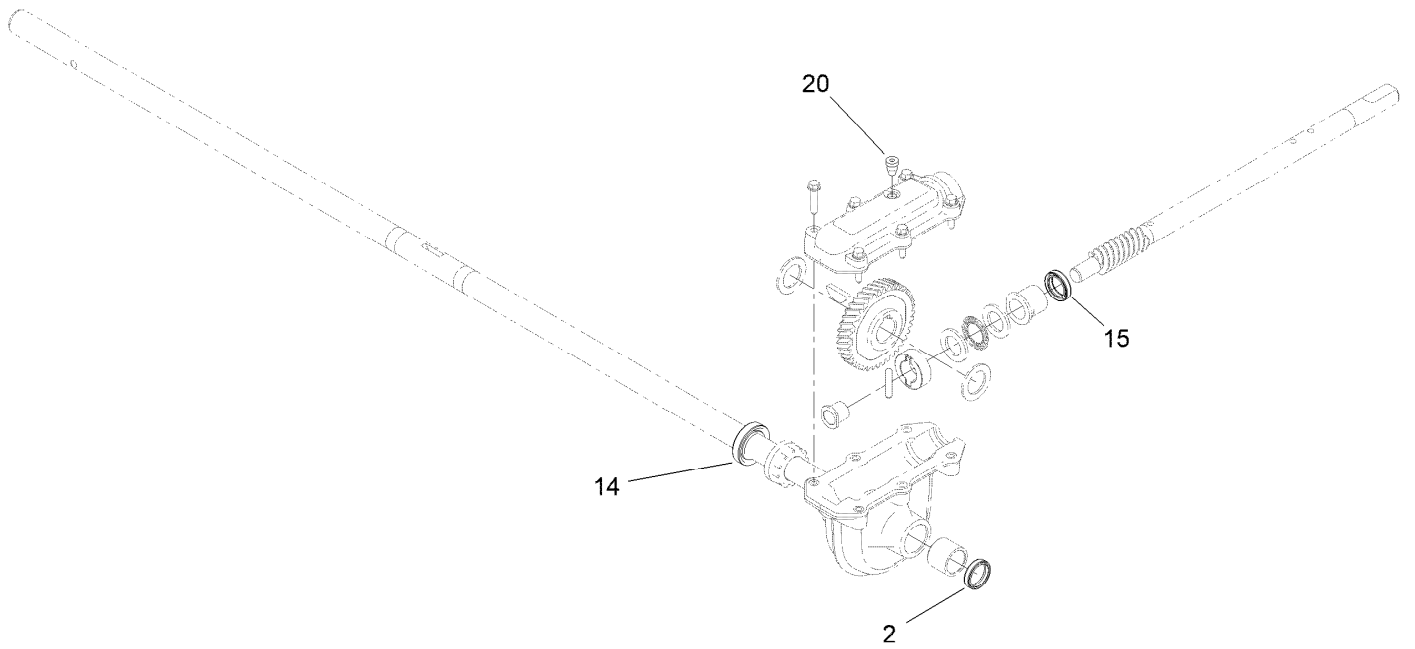
Auger Assembly



Auger Assembly (continued)

<i>Ref.</i>	<i>Part Number</i>	<i>Qty.</i>	<i>Description</i>	<i>Ref.</i>	<i>Part Number</i>	<i>Qty.</i>	<i>Description</i>
1	140-5439	1	Auger Gearcase ASM, 48N	19	136-6557	1	Pulley-Impeller, Double Sheave
2	136-6570-03	1	Impeller	20	323-7	2	Screw-HH
3	137-3032	2	Screw-HH	21	104-8301	4	Nut-HF, NI
4	137-3088	2	Nut-Hex	22	136-6504	1	Belt-V
5	140-5410-03	1	Auger, Gs-48 RH [black]	23	139-7591	1	Pulley
6	140-5420-03	1	Auger, Gs-48 LH [black]	24	1-803050	2	Screw-Set
7	3-0750	2	Washer	25	117-9971	2	Bolt-Carriage
8	137-3066	2	Screw-HH	26	140-5478	1	Washer
9	106-4570	2	Bearing-Auger	27	114-0463	2	Washer-Friction, Composite
10	32144-70	4	Screw-HWHTF	28	140-5476	1	Arm-Idler
11	136-6571	1	Bearing-Ball	29	1-413088	1	Bushing-Lever, Lift
12	136-6573	1	Retainer-Bearing	30	110-9981	1	Washer-Plain
13	32144-85	3	Screw-HWH	31	136-6531	1	Pulley, Idler
14	120-9738	2	Screw-HH	32	140-7708	1	Spring
15	136-7148	2	Spacer-Grommet	33	140-7702	1	Cover-Belt
16	119-4038	2	Nut-Hex	34	701243	4	Screw-Thd Roll, HWH
17	136-6558	1	Hub-Pulley	35	137-3121	1	Washer-Plain
18	115-5142	1	Screw-HHF				

Auger Gearcase Assembly No. 140-5439

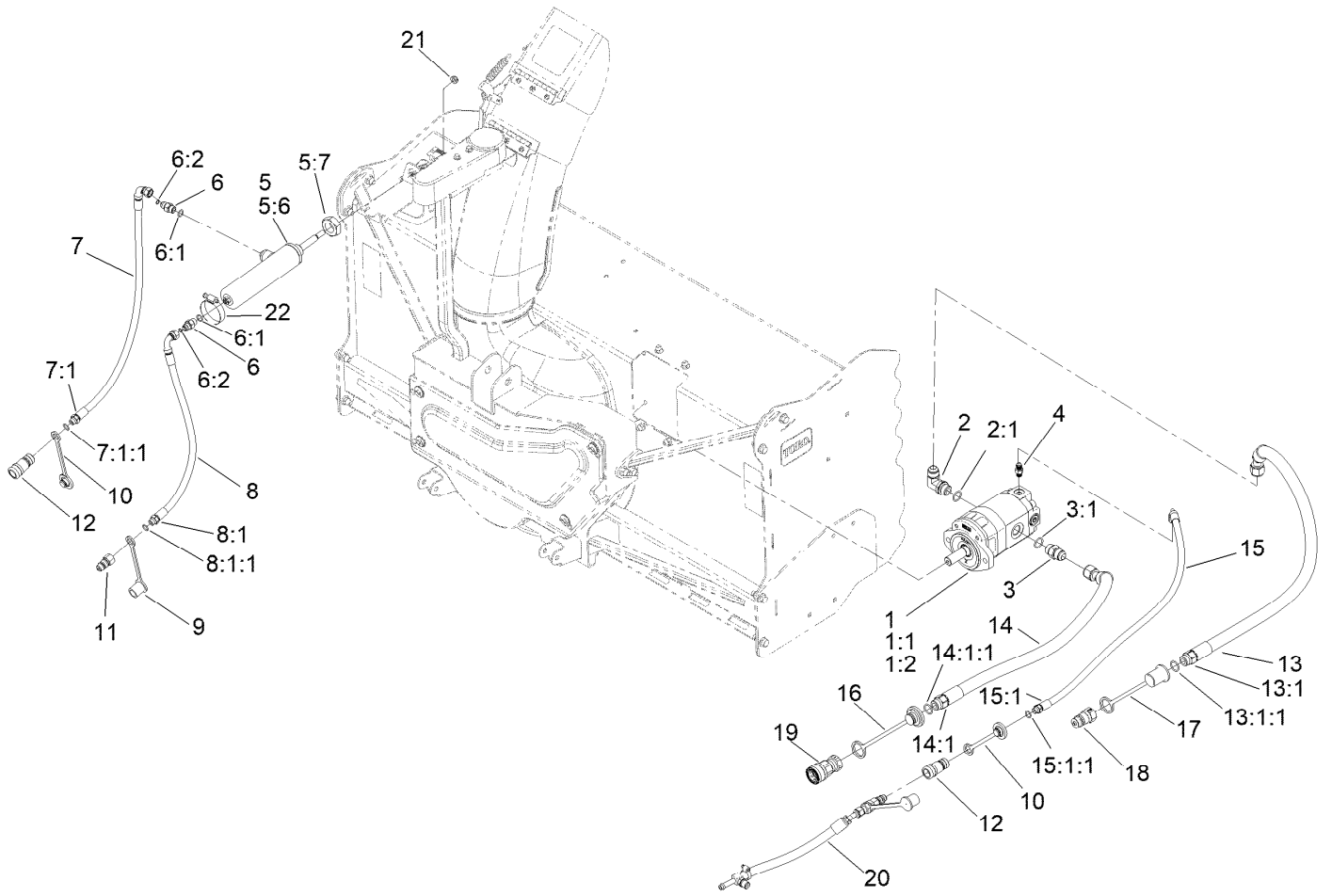


Auger Gearcase Assembly No. 140-5439 (continued)

<i>Ref.</i>	<i>Part Number</i>	<i>Qty.</i>	<i>Description</i>
2	137-6173	1	Seal-Oil
14	136-6554	1	Seal-Oil

<i>Ref.</i>	<i>Part Number</i>	<i>Qty.</i>	<i>Description</i>
15	137-6174	1	Seal-Oil
20	138-3629	1	Plug-Oil

Hydraulic Hose Assembly

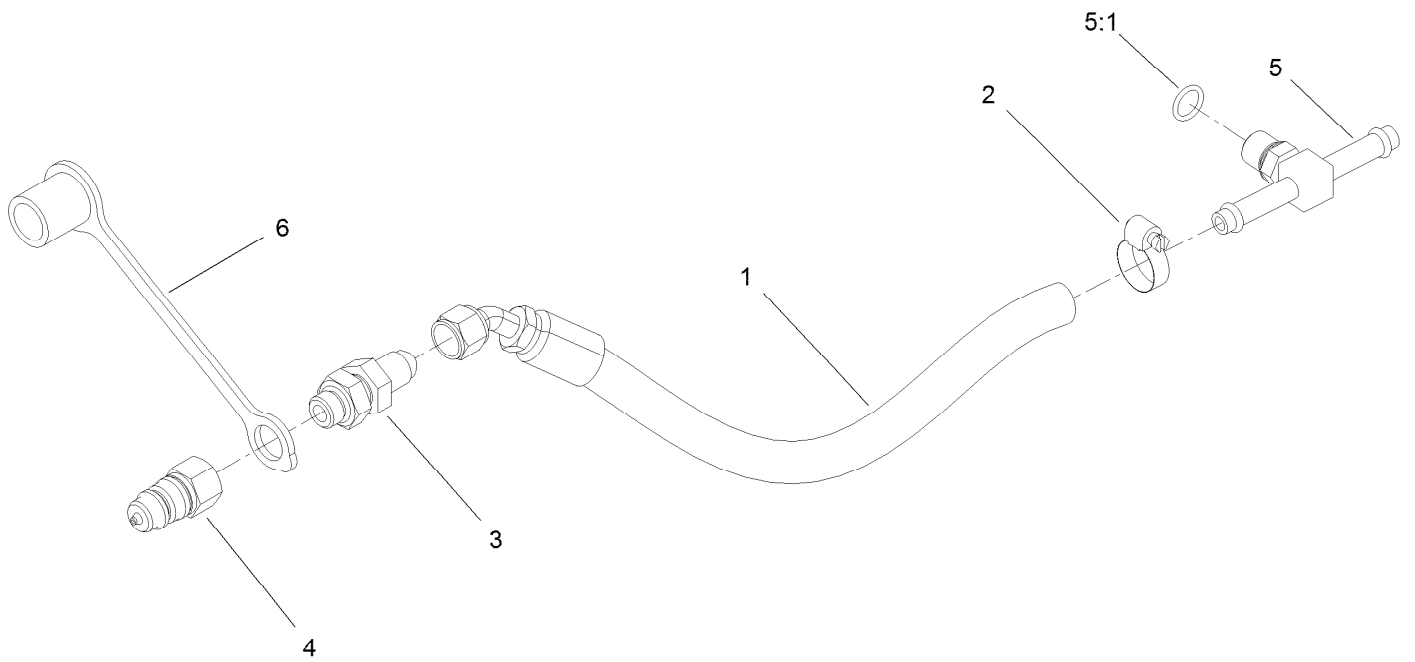


Hydraulic Hose Assembly (continued)

<i>Ref.</i>	<i>Part Number</i>	<i>Qty.</i>	<i>Description</i>	<i>Ref.</i>	<i>Part Number</i>	<i>Qty.</i>	<i>Description</i>
1	139-7577	1	Motor-Hydraulic	8:1:1	237-42	1	O-Ring
1:1	140-9502	1	Motor Seal Kit	9	353-985	1	Cap-Dust
1:2	140-9503	1	Relief Valve- 3335PSI	10	353-984	2	Plug-Dust
1:3	104-5839	1	Key-Square ●	11	63-1240	1	Nipple-Disconnect, Quick
2	353-370	1	Fitting-Elbow, 90 DEG	12	63-1220	2	Coupler-Disconnect, Quick
2:1	237-80	1	O-Ring	13	140-4267	1	Hose-HYD
3	353-385	1	Fitting-Straight	13:1		1	Fitting-Straight ■
3:1	237-80	1	O-Ring	13:1:1	237-80	1	O-Ring
4	353-545	1	Fitting-Straight	14	140-4266	1	Hose-HYD
5	139-7647	1	Cylinder	14:1		1	Fitting-Straight ■
5:6	140-9408	1	Kit-Seal, Cylinder	14:1:1	237-80	1	O-Ring
5:7	140-9418	1	Nut-Hex Jam	15	140-4268	1	Hose-HYD
5:9	117-8315	1	Orifice (.025 Inch) ●	15:1		1	Fitting-Straight, Rigid ■
6	103-2156	2	Fitting-Straight	15:1:1	237-42	1	O-Ring
6:1	1-603921	1	O-Ring	16	T56152150	1	Plug-Quick Connect
6:2	103-1020	1	O-Ring	17	T56152152	1	Cap-Connect, Quick
7	140-5460	1	Hose-HYD	18	136-5711	1	Disconnect-Quick , Male
7:1		1	Fitting-Straight, Rigid ■	19	144-1598	1	Quick Coupler-Female
7:1:1	237-42	1	O-Ring	20	136-7436	1	Case Drain Kit
8	140-5461	1	Hose-HYD	21	3296-5	1	Nut-Hex
8:1		1	Fitting-Straight, Rigid ■	22	2412-92	1	Clamp-Hose

● Not illustrated

■ Not serviced separately



High Flow Case Drain Assembly No. 136-7436

<i>Ref.</i>	<i>Part Number</i>	<i>Qty.</i>	<i>Description</i>
1	136-8310	1	Hose ASM
2	2412-36	1	Clamp-Hose
3	136-8306	1	Fitting, Bulkhead
4	63-1240	1	Nipple-Disconnect, Quick
5	136-8307	1	Fitting-Tee
5:1	237-42	1	O-Ring
6	353-985	1	Cap-Dust

Notes:

Notes:

Notes:



Count on it.