



Heavy Duty Bumper Kit

Workman® 1100/2100 Utility Vehicle

Model No. 07282

Installation Instructions

1. Position the machine on a level surface. Set the parking brake, turn the ignition off, and remove the key.



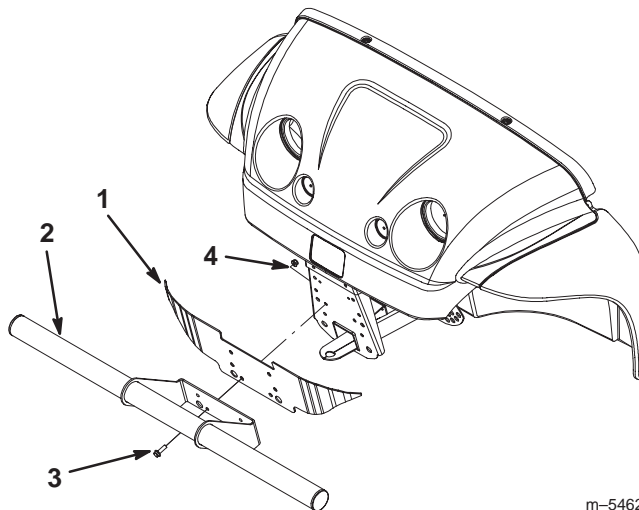
Caution



If you leave the key in the ignition switch, someone could accidentally start the engine and seriously injure you or other bystanders.

Remove the key from the ignition switch before you do any maintenance.

2. Remove the existing bumper from the front of the vehicle.
3. Align the large bottom left hole in the heavy duty bumper with the large bottom hole in the shield. Then align both parts with the proper hole in the vehicle frame (Fig. 1).
4. Attach the heavy duty bumper and shield to the vehicle with 4 flange bolts and nuts (Fig. 1).



m-5462

Figure 1

- | | |
|----------------------|----------------|
| 1. Shield | 3. Flange bolt |
| 2. Heavy duty bumper | 4. Flange nut |