



BY APPOINTMENT TO
HER MAJESTY THE QUEEN
MANUFACTURERS OF HAYTER
HORTICULTURAL MACHINERY
TORD UNLIMITED, SPELLBROOK,
BISHOPS STORTFORD, HERTS

HAYTER

MAKERS OF THE FINEST MOWERS

Parts Catalogue

HARRIER 41 60V PUSH

Code CODE373A

Serial No.411602944

Manual Part No. 134-7571 Rev B

Ordering Replacement Parts

To order replacement parts, please supply the part number, the quantity, and the description of each part desired.

Understanding Reference Numbers

Each identified part in an illustration has a reference number. The reference number for a part also appears in the parts list, along with other information about the part.

This catalog uses two special reference number formats, one to indicate parts in a service assembly and another to indicate the quantity of a given part in an illustration.

Service Assembly Reference Numbers

Parts in service assemblies have reference numbers in the form a:b. The a represents the reference number of the entire service assembly and the b represents a sequential number unique to each part within the service assembly.

For example, a wheel assembly might be identified by reference number 6, the tire by 6:1, the valve by 6:2, and the wheel by 6:3. When you order the assembly identified by reference number 6, you receive all parts identified by reference numbers 6:1, 6:2, and 6:3. However, you may also order any part individually. Reference numbers of this type appear in illustration and in parts lists.

Reference Numbers Indicating Quantity

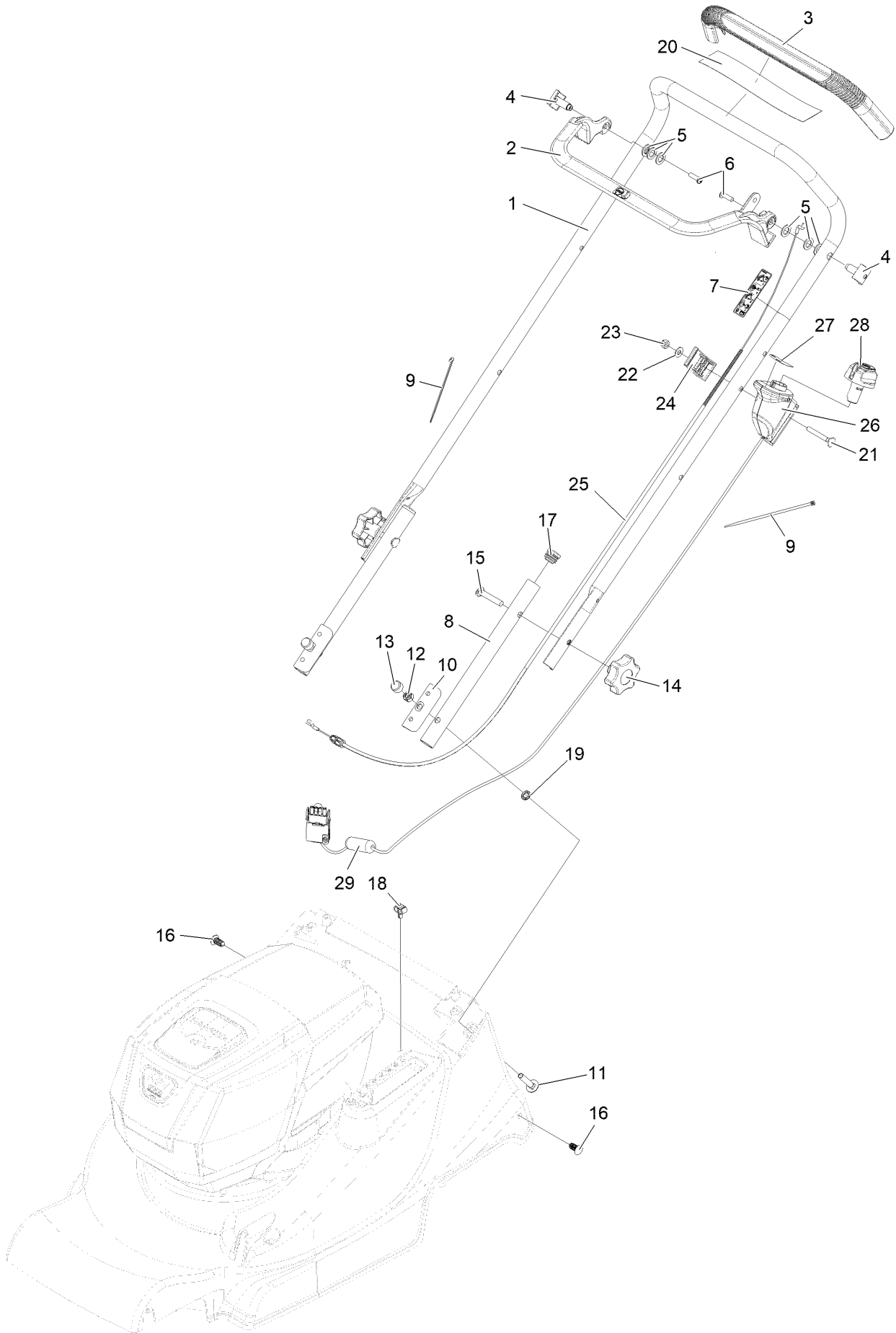
In an illustration, if a reference number indicates more than one part, the reference number has the form nX y. The n represents the quantity of the part, the X is the multiplication symbol, and the y represents the reference number.

For example, in an illustration, the reference number 2X 37 means that two of the parts identified by reference number 37 are indicated.

Contents

- Handlebar and Controls 4
- Motor and Blade 6
- Deck and Grassbag 8
- Transmission and Height of Cut 10
- MOTOR MODULE (60V) [CE] [GREY] 12
- MOTOR MODULE (60V) [CE] [GREY] 14

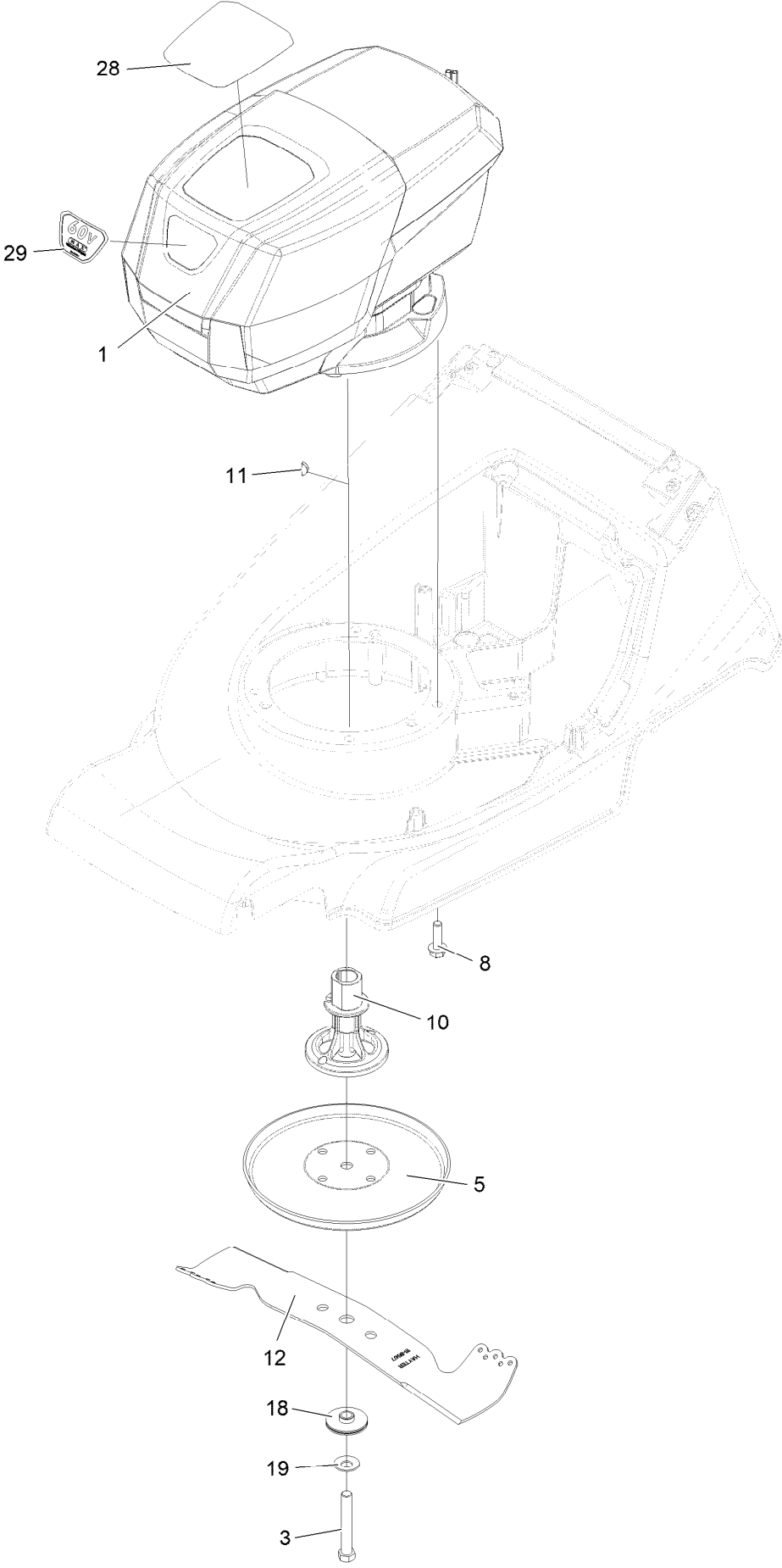
Handlebar and Controls



Handlebar and Controls (continued)

<i>Ref.</i>	<i>Part Number</i>	<i>Qty.</i>	<i>Description</i>	<i>Ref.</i>	<i>Part Number</i>	<i>Qty.</i>	<i>Description</i>
1	134-4658-03	1	Upper Handlebar	16	111-9831	2	Plastic Fir Tree Rivet 8.7MM
2	111-9662	1	OPC Lever - Engine	17	300160	2	Plug-Tube
3	111-8716	1	"handle, Soft Grip"	18	111-8696	1	Clip-Conduit, Twin
4	340182	2	Pin-Pivot	19	04020	2	Grip-Fix
5	09688	6	Washer-Nylon	20	134-3328	1	Tape - Toffee
6	09687	2	Screw	21	137-3109	1	Bolt-CARR
7	134-4551	1	Decal-Buton, Push, 60V	22	139-1699	1	Washer-Flat
8	111-9837-03	2	Handlebar Lower	23	137-3094	1	Nut-Hex
9	HY3966	2	Tie-Cable	24	136-7029	1	Clamp-Cable
10	340028	2	Plate-Clamp, Handlebar	25	134-4874	1	OPC 60V, Harrier 41
11	09379	2	Bolt-Coach	26	140-3800	1	Switch-Starter ASM
12	09441	2	Nut-Hex, NI	27	134-4691	1	Decal - Control Speed
13	HY234051	2	Cap-Nut	28	134-5125	1	Starter Button, 2-Sp
14	480088	2	Knob-Handlebar	29	111-9822	1	Ferrite-Suppression, Emc
15	HY226024	2	Bolt-Handlebar				

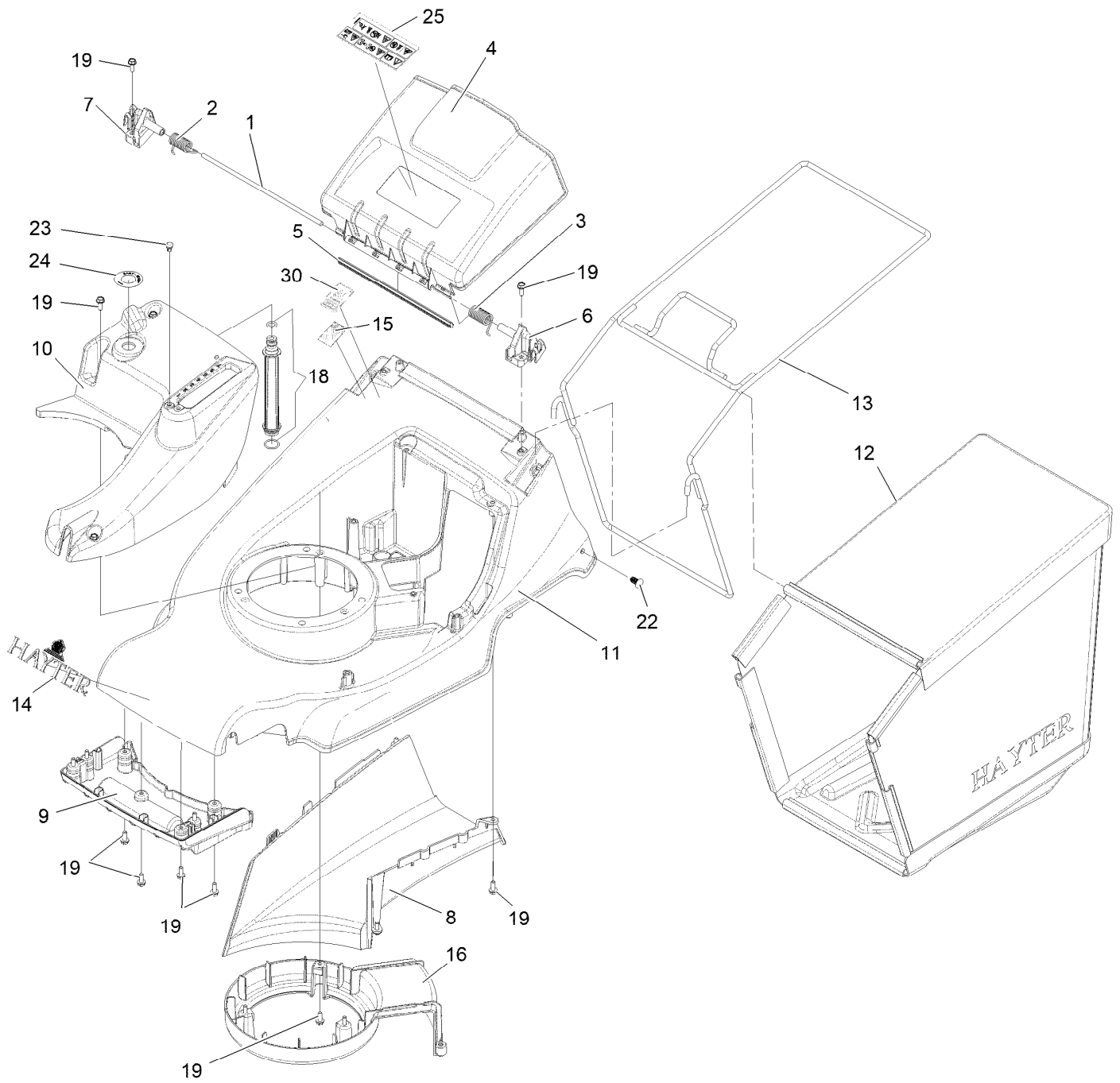
Motor and Blade



Motor and Blade (continued)

<i>Ref.</i>	<i>Part Number</i>	<i>Qty.</i>	<i>Description</i>	<i>Ref.</i>	<i>Part Number</i>	<i>Qty.</i>	<i>Description</i>
1	134-4910	1	Motor Module, 1.5Kw, 60V	11	3257-32	1	Key-Woodruff
3	134-1682	1	Bolt, Unf 7/16 X 3 (Grade 8, Rohs)	12	111-8567	1	Cutterbar Harrier 41
5	410057W	1	Disc-Friction	18	134-2838	1	Distance Piece Cutterbar
8	09349	3	Screw-Taptite, Unc	19	134-3301	1	Washer, Lock M12
8	95-1726	3	Screw-Taptite	28	134-6786	1	Decal - Cover Top 60V
10	134-5008	1	Boss Autodrive, 25MM	29	134-4228	1	Decal - Cover Front

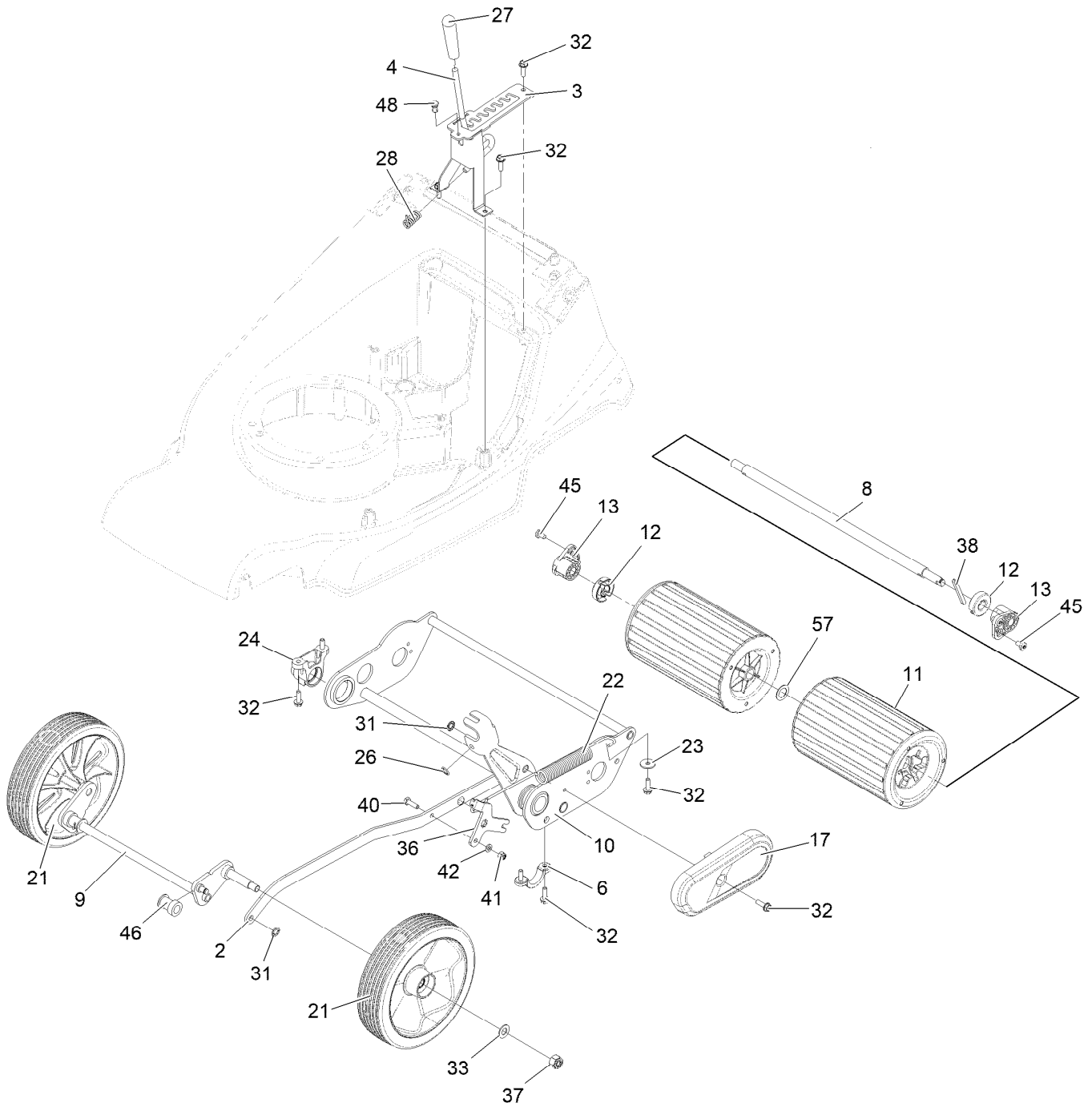
Deck and Grassbag



Deck and Grassbag (continued)

<i>Ref.</i>	<i>Part Number</i>	<i>Qty.</i>	<i>Description</i>	<i>Ref.</i>	<i>Part Number</i>	<i>Qty.</i>	<i>Description</i>
1	111-8545	1	Deflector Rod	13	111-8558-03	1	Frame Grassbag 41
2	111-8544	1	Spring-Deflector, Right	14	134-0051	1	Logo-Hayter
3	111-8543	1	Spring-Deflector, Left	15	111-7722	1	Made In Britain Decal
4	134-0417	1	Rear Deflector	16	111-8578	1	Blade Blocking Wall
5	111-8540	1	Rear Deflector Seal	18	111-8659	1	Washport Adapter Assembly
6	111-8541	1	Mount-Deflector, Left	19	09575	21	Screw-Taptite
7	111-8542	1	Deflector Mount Right	22	111-9831	2	Plastic Fir Tree Rivet 8.7MM
8	111-8537	1	Throw Plate	23	341033	1	Fastener-Drive
9	111-8536	1	Front Fins	24	111-9937	1	Decal-Easy Wash
10	111-8538	1	Top Trim	25	134-5016	1	Decal - Safety 60V
11	111-8535-08	1	Harrier 41 Deck	30	134-0090	1	Decal - Lifetime Deck Warranty
12	111-8549	1	Fabric Grassbag 41				

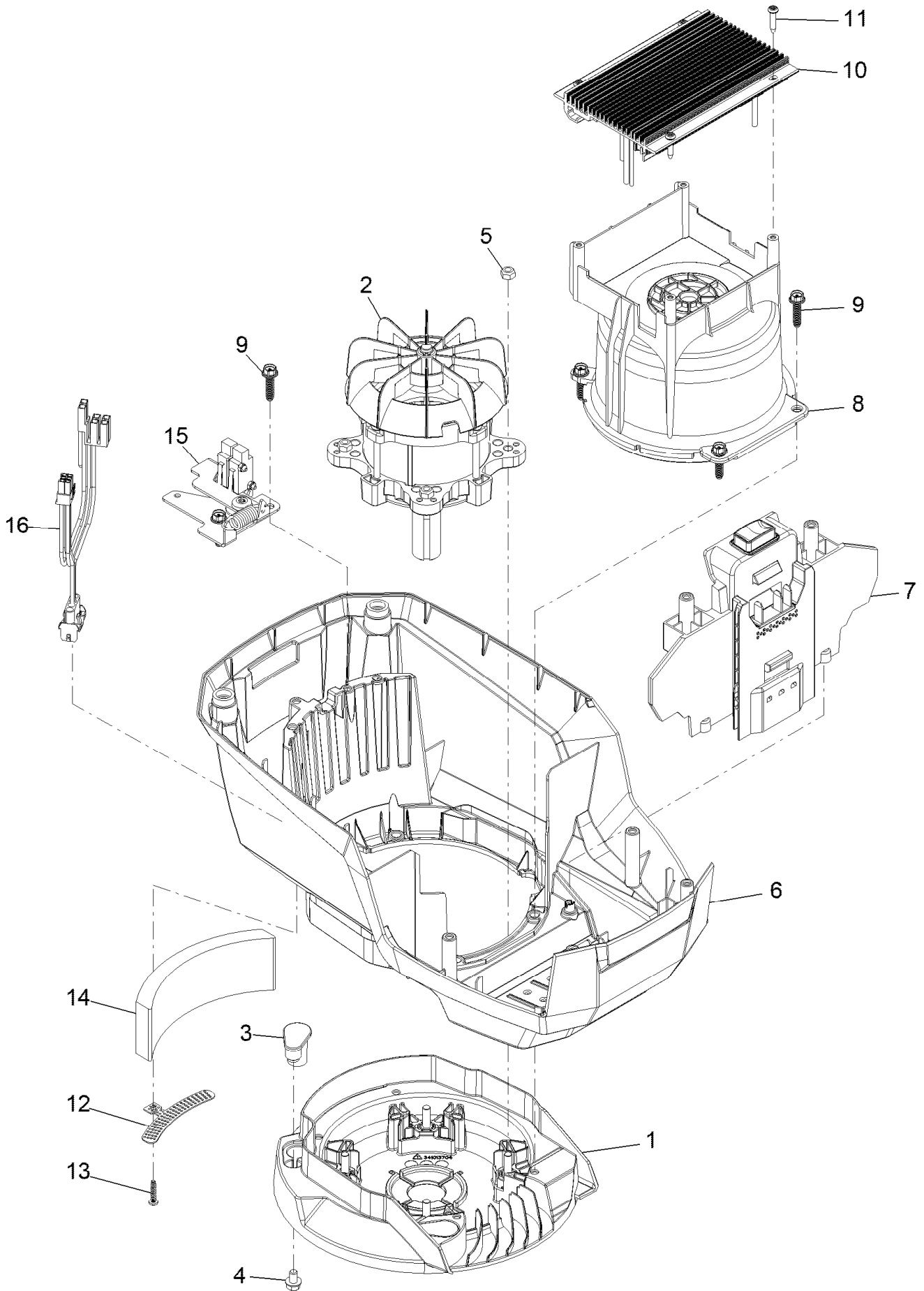
Transmission and Height of Cut



Transmission and Height of Cut (continued)

<i>Ref.</i>	<i>Part Number</i>	<i>Qty.</i>	<i>Description</i>	<i>Ref.</i>	<i>Part Number</i>	<i>Qty.</i>	<i>Description</i>
2	111-9459	1	Connecting Rod Wa	27	480134	1	Knob-HOC
3	111-8675	1	HOC Tower Assembly	28	480132	1	Spring-Torsion, HOC
4	111-8705	1	Lever-HOC	31	0201086	2	Washer-Starlock
6	111-8670	1	Axle- Support, Rear	32	09575	9	Screw-Taptite
8	111-8601	1	Roller Shaft	33	09479	2	Washer-Plain
9	134-6055	1	Front Axle Assembly HD	36	111-9003	1	Spring Load Lever
10	134-2160-03	1	Rear Axle Frame Assembly	37	09447	2	Nut
11	111-8598	2	Roller Half Assembly	38	111-8607	1	Drive Key
12	111-9720	2	Spacer, Rear Roller - Push	40	09363	1	Screw-HH
13	134-2635	2	Bush, Rear Roller	41	09544	1	Nut-Nyloc
17	134-3771	1	Chain Guard	42	09472	1	Washer-Plain
21	111-8858	2	Wheel 8", Pvc Tyre	45	134-0050	4	Screw-Taptite
22	410050	1	Spring-Counter Balance	46	410069	2	Bearing-Axle, Front
23	09263	1	Washer	48	134-0262	1	Rivet-Push, Plastic
24	111-8576	1	Rear Frame Bearing Mount	57	108-0015	1	Washer-Flat
26	04020	1	Grip-Fix				

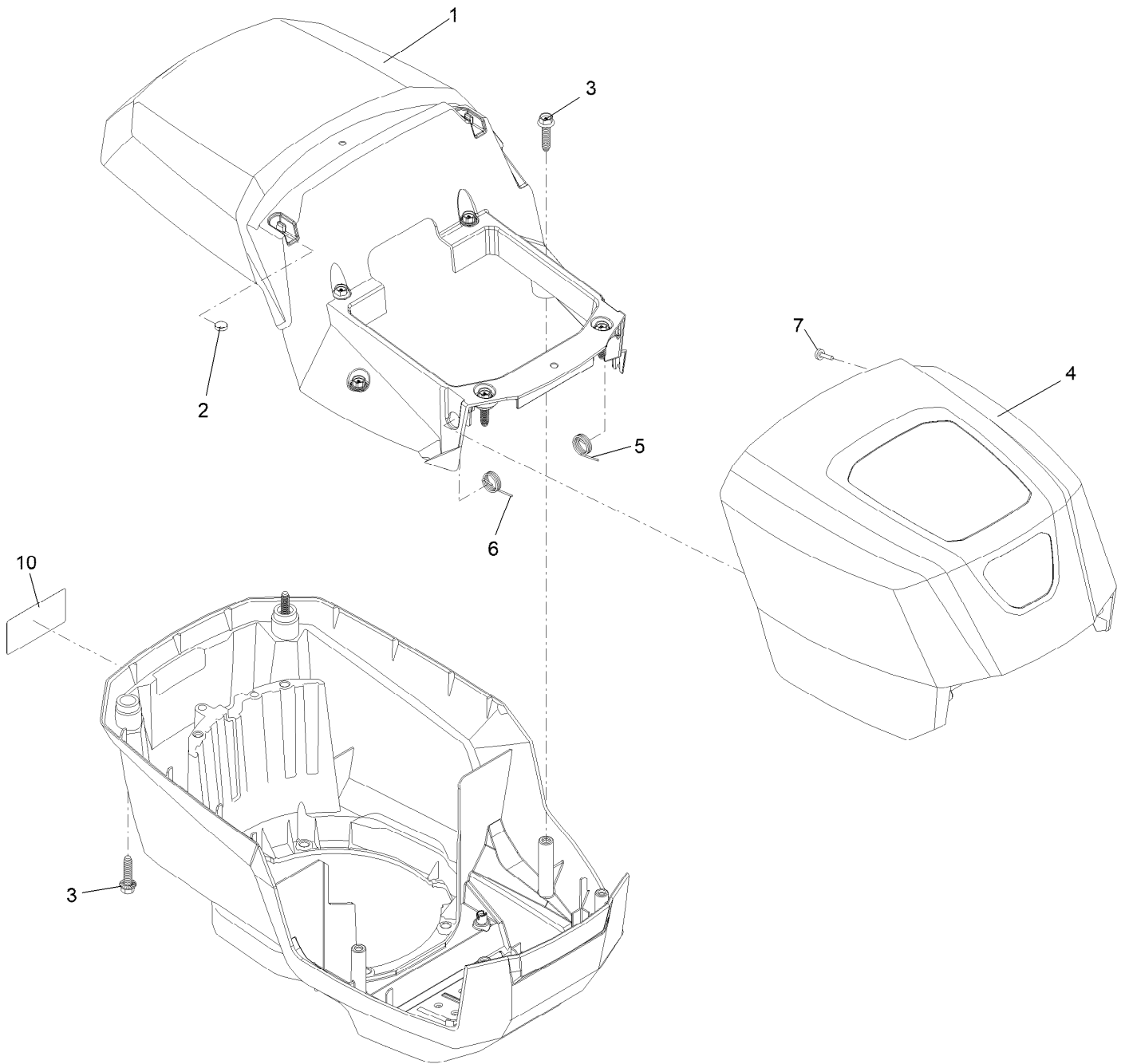
MOTOR MODULE (60V) [CE] [GREY]



MOTOR MODULE (60V) [CE] [GREY] (continued)

<i>Ref.</i>	<i>Part Number</i>	<i>Qty.</i>	<i>Description</i>	<i>Ref.</i>	<i>Part Number</i>	<i>Qty.</i>	<i>Description</i>
1	139-6628	1	Base-Mount, Motor	9	130-6658	6	Screw-Flange, Plastic
2	139-6630	1	Motor	10	134-4561	1	Driver-Motor, 2-Speed
3	131-9732	3	Insert-Mount, Motor	11	139-6642	4	Screw
4	137-4795	3	Screw	12	139-6635	1	Bracket-Foam
5	115-7373	4	Nut-Lock	13	138-3273	1	Screw-Plastic, PPH
6	134-4181	1	Shroud Lower Grey	14	139-6636	1	Foam
7	139-6632	1	Battery Reciever ASM	15	133-1918	1	Bail Switch ASM
8	139-6633	1	Shroud-Motor	16	139-6637	1	Harness-Wire

MOTOR MODULE (60V) [CE] [GREY]



MOTOR MODULE (60V) [CE] [GREY] (continued)

<i>Ref.</i>	<i>Part Number</i>	<i>Qty.</i>	<i>Description</i>	<i>Ref.</i>	<i>Part Number</i>	<i>Qty.</i>	<i>Description</i>
1	134-4182	1	Shroud Upper Green Series	5	139-6640	1	Spring-LH
2	114-5896	2	Magnet	6	139-6641	1	Spring-RH
3	130-6658	8	Screw-Flange, Plastic	7	95-4234	2	Screw-PPH
4	139-6639	1	Hood	10	134-4575	1	Label Engine Serial Number

