



## TX 425

### Dingo<sup>®</sup> Compact Utility Loader

Model No. 22307—220000401 and Up

## Parts Catalog

---

### Ordering Replacement Parts

To order replacement parts, please supply: the part number, the quantity, and the description of each part desired.

### Understanding Reference Numbers

Each identified part in an illustration has a reference number. The reference number for a part also appears in the parts list, along with other information about the part.

This catalog uses two special reference number formats, one to indicate parts in a service assembly and another to indicate the quantity of a given part in an illustration.

### Service Assembly Reference Numbers

Parts in service assemblies have reference numbers in the form **a:b**. The **a** represents the reference number of the entire service assembly and the **b** represents a sequential number unique to each part within the service assembly.

For example, a wheel assembly might be identified by reference number **6**, the tire by **6:1**, the valve by **6:2**, and the wheel by **6:3**. When you order the assembly identified by reference number **6**, you receive all parts identified by reference numbers **6:1**, **6:2**, and **6:3**. However, you may also order any part individually.

Reference numbers of this type appear in illustrations and in part lists.

### Reference Numbers Indicating Quantity

In an illustration, if a reference number indicates more than one part, the reference number has the form **nX y**. The **n** represents the quantity of the part, the **X** is the multiplication symbol, and the **y** represents the reference number.

For example, in an illustration, the reference number **2X 37** means that two of the parts identified by reference number **37** are indicated.

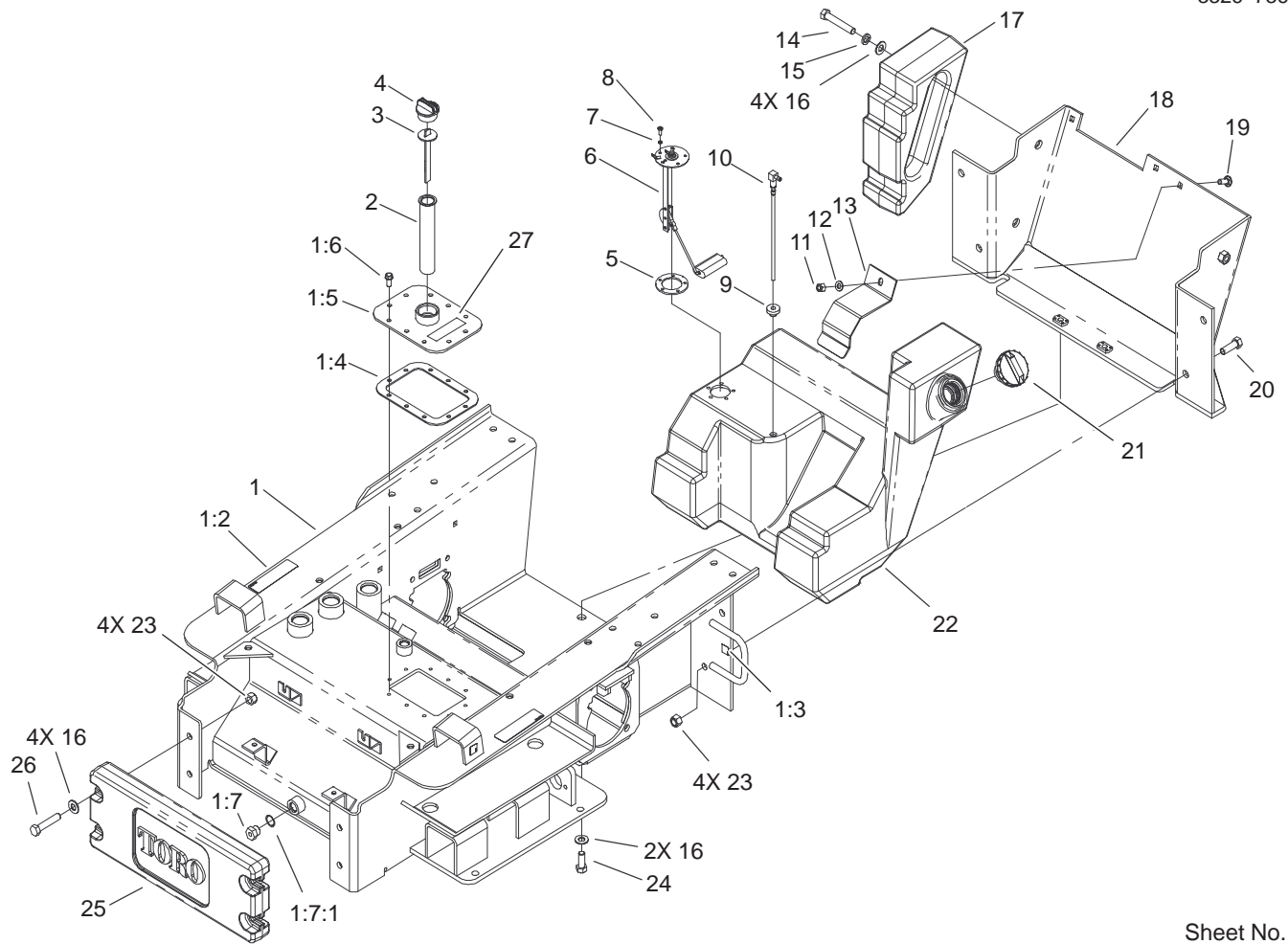
## Contents

Description	Page	Description	Page
Main Frame and Fuel Tank Assembly .....	3	Rear Access Cover Assembly .....	32
Track and Traction Assembly .....	4	Electrical Schematic .....	33
Brake Assembly .....	5	Hydraulic Schematic .....	34
Loader Tower and Drive Assembly .....	6	Crankshaft Assembly	
Traction Hydraulic Assembly .....	7	Kohler Engine CH25S PS-68688 .....	35
Hydraulic Wheel Motor Assembly No. 98-2767	9	Crankcase Assembly	
Left Hand Hydraulic Pump		Kohler Engine CH25S PS-68688 .....	36
Assembly No. 98-8432 .....	10	Oil Pan/Lubrication Assembly	
Engine and Mount Assembly .....	11	Kohler Engine CH25S PS-68688 .....	37
Hydraulic Pump Assembly .....	12	Head/Valve/Breather Assembly	
Hydraulic Gear Pump Assembly No. 98-2752 .	14	Kohler Engine CH25S PS-68688 .....	38
Control Panel Assembly .....	15	Ignition/Electrical Assembly	
Traction Control Assembly .....	17	Kohler Engine CH25S PS-68688 .....	39
Principal Hydraulic Assembly .....	18	Blower Housing and Baffles Assembly	
2-Spool Valve Assembly No. 95-3536 .....	20	Kohler Engine CH25S PS-68688 .....	40
1-Spool Valve Assembly No. 104-2831 .....	21	Starting System Assembly	
Loader Arm Assembly .....	22	Kohler Engine CH25S PS-68688 .....	41
Loader Arm Hydraulic Assembly .....	23	Fuel System Assembly	
Lift Cylinder Assembly No. 99-6162 .....	25	Kohler Engine CH25S PS-68688 .....	42
Tilt Cylinder Assembly No. 95-3578 .....	26	Engine Controls Assembly	
Quick Attach Assembly .....	27	Kohler Engine CH25S PS-68688 .....	43
Electrical System Assembly .....	28	Air Intake and Filtration Assembly	
Grill Assembly .....	29	Kohler Engine CH25S PS-68688 .....	44
Hydraulic Oil Cooler Assembly .....	30	Exhaust Assembly	
Hood Assembly .....	31	Kohler Engine CH25S PS-68688 .....	45

## Part Description Abbreviations

Part descriptions in this catalog may include the following abbreviations.

Abbreviation	Meaning	Abbreviation	Meaning
AR .....	as required	HYD .....	hydraulic
ASM .....	assembly	INC .....	incorporated
CARR .....	carriage	LH .....	left hand
DEG .....	degrees	NI .....	nylon insert
FH .....	flat head	PPH .....	Phillips pan head
GA .....	gauge	PTH .....	Phillips truss head
HF .....	hex flange	PTO .....	power take off
HH .....	hex head	RH .....	right hand
HHF .....	hex head flange	SFH .....	slotted fillister head
HLH .....	hex lag head	SHH .....	slotted hex head
HJ .....	hex jam	SQH .....	square head
HOC .....	height-of-cut	SHWH .....	slotted hex washer head
HS .....	hex socket	SPH .....	slotted pan head
HSBH .....	hex socket button head	SRH .....	slotted round head
HSFH .....	hex socket flat head	STD .....	standard
HSH .....	hex socket head	TAP .....	self tapping
HWH .....	hex washer head	TTH .....	Torx truss head
HWHTF .....	hex washer head thread forming	WH .....	wing head

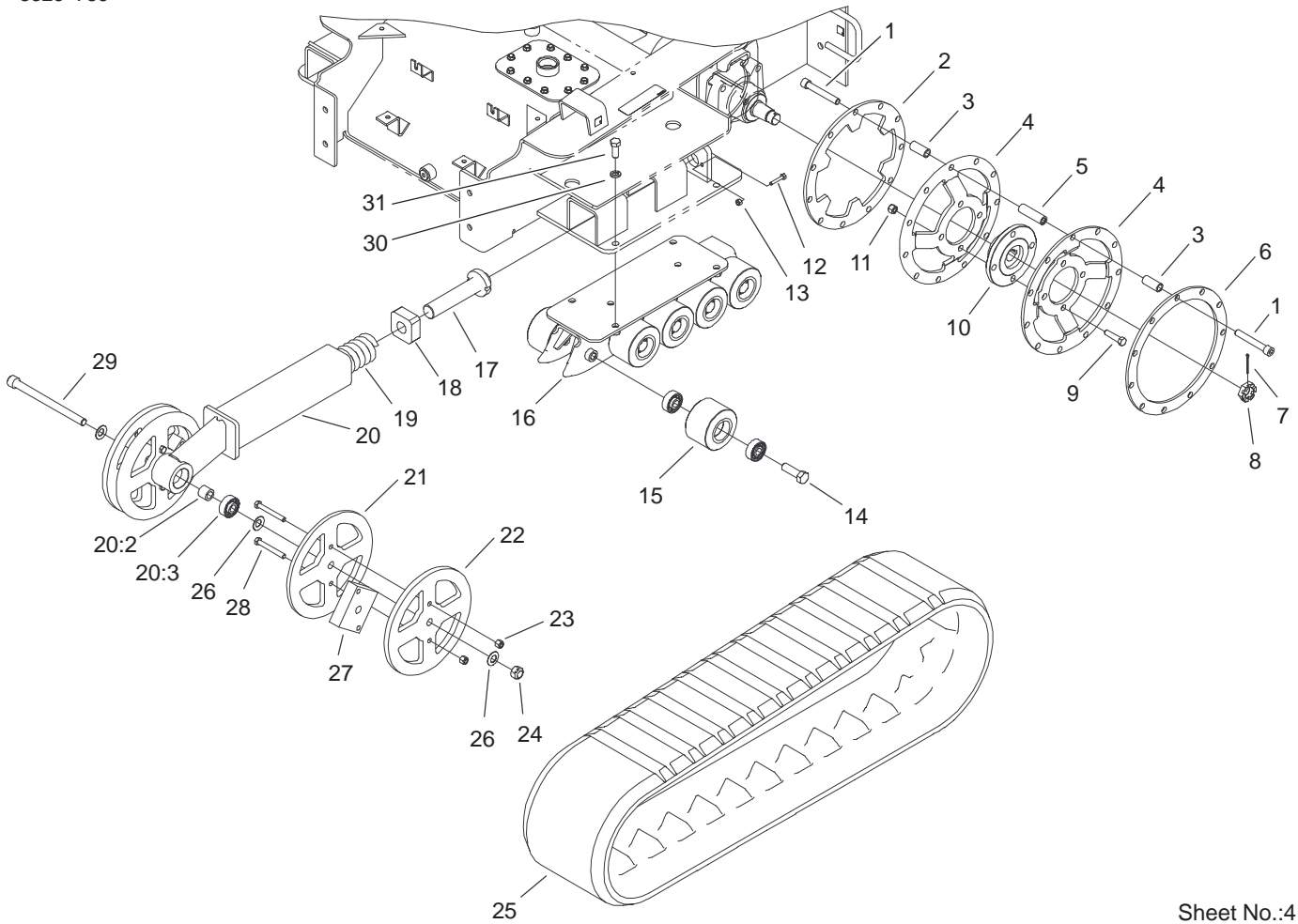


Sheet No.:2

## Main Frame and Fuel Tank Assembly

Ref. No.	Part No.	Qty.	Description
1	105-5890	1	Chassis ASM
1:2	100-6141	2	Decal-Pinch
1:3	93-9084	4	Decal-Point, Lift
1:4	100-1253	1	Gasket-Cover, Access
1:5	104-8389-01	1	Tank Cover ASM
1:6	98-9940	10	Screw
1:7	353-988	2	Plug-Hex, Hollow
1:7:1	237-79	1	O-Ring
2	61-2790	1	Filter-Screen
3	100-2097	1	Dipstick-Oil
4	93-7498	1	Plug-Plastic
5	113372	1	Gasket-Sender, Fuel
6	100-1298	1	Sender-Fuel
7	3253-17	5	Washer-Lock/Sp
8	3250-31	5	Screw-PPH
9	46-6560	1	Bushing
10	98-0185	1	Pipe Stand ASM
11	3296-39	1	Nut-Lock, NI
12	3256-38	1	Washer-Flat
13	100-1257-03	1	Clamp-Tank, Fuel
14	325-12	4	Screw-HH
15	3253-7	4	Washer-Lock
16	3256-26	10	Washer-Flat
17	99-6165-01	2	Counterweight-Rear
18	105-0373-01	1	Rear Frame Cover ASM

Ref. No.	Part No.	Qty.	Description
19	3231-22	1	Screw-CARR
20	325-6	4	Screw-HH
21	93-3101	1	Cap-Fuel
22	95-3619	1	Tank-Fuel
23	3296-23	8	Nut-Lock, NI
24	325-5	2	Screw-HH
25	99-6166-01	1	Counterweight-Front
26	325-10	4	Screw-HH
27	105-8404	1	Decal-Oil, HYD

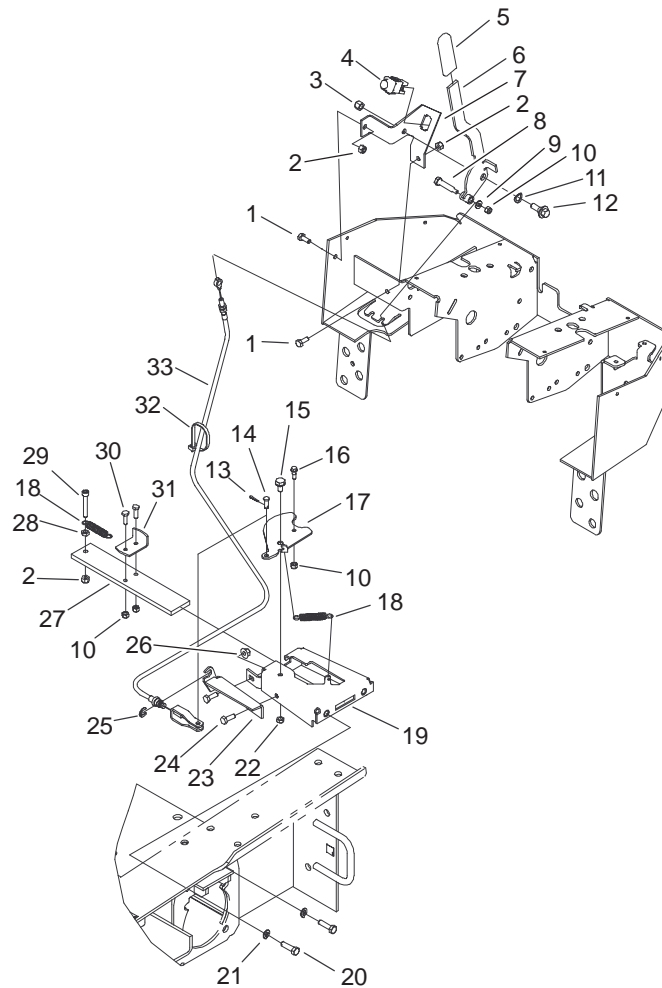


Sheet No.:4

## Track and Traction Assembly

Ref. No.	Part No.	Qty.	Description
1	3274-100	44	Screw-HSH
2	100-8934-03	2	Rim-Brake, Drive Wheel
3	100-8936	44	Spacer-Wheel, Drive
4	100-8935-03	4	Drive Wheel ASM
5	100-1286	22	Spacer-Wheel, Drive
6	99-6170-03	2	Wheel-Drive, Ring
7	99-3171	2	Pin-Cotter
8	99-3139	2	Nut-Wheel, Motor
9	325-7	8	Screw-HH
10	104-5719-03	2	Hub-Wheel, Drive
11	3296-23	8	Nut-Lock, NI
12	321-13	2	Screw-HH
13	3296-42	2	Nut-Lock, NI
14	327-6	20	Screw-HH
15	105-0248	20	Road Wheel ASM
16	105-5803-03	2	Track Guide ASM
17	98-9846	2	Bolt-Tensioner
18	95-3626	2	Block-Tensioning
19	95-3624	2	Spring-Compression
20	105-5837	2	Tensioner Arm ASM
20:2	105-5832	1	Spacer-Bearing
20:3	93-4237	2	Bearing
21	105-5833-03	4	Wheel-Tensioner, Inner

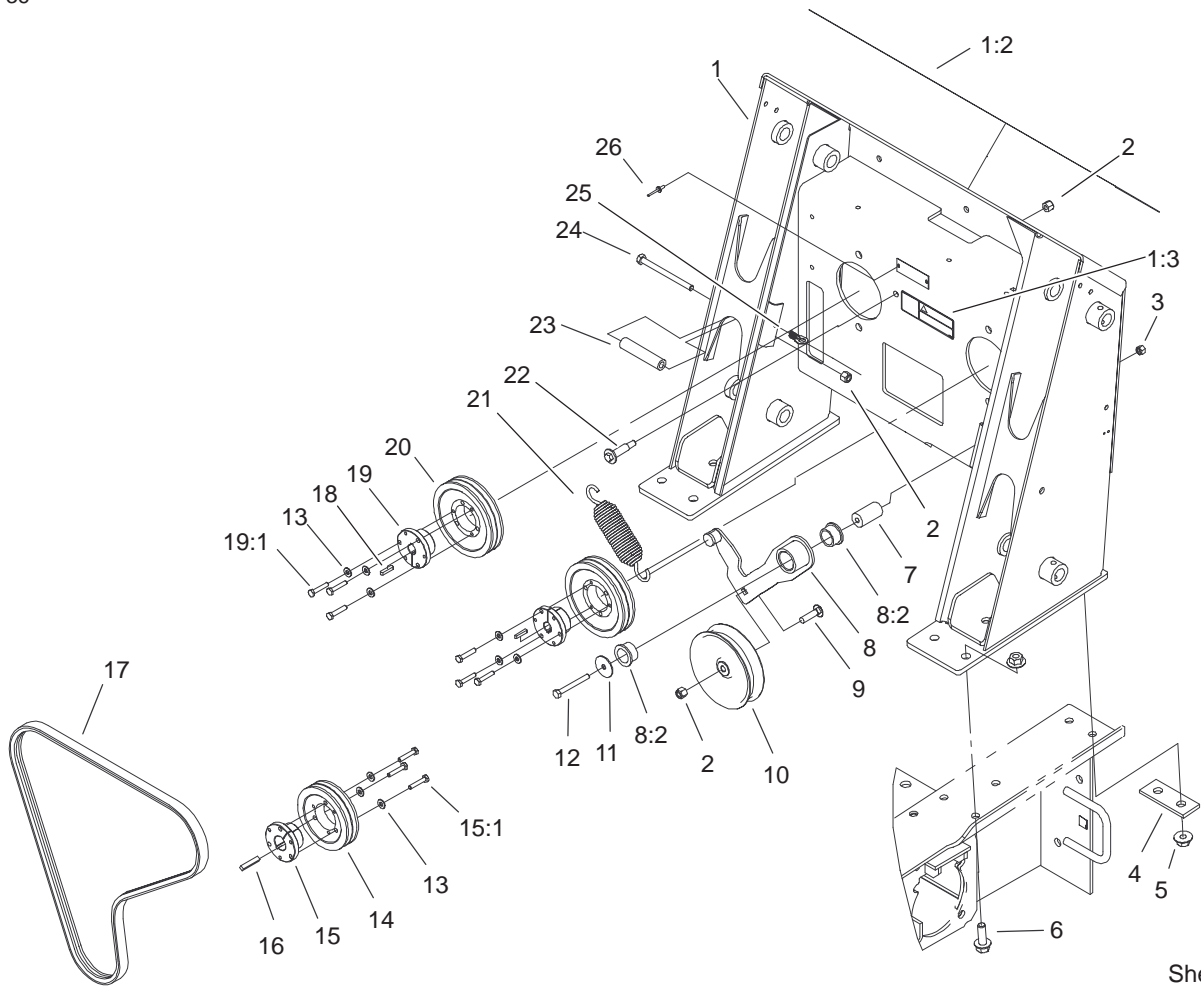
Ref. No.	Part No.	Qty.	Description
22	105-0242-03	4	Wheel-Tensioner, Outer
23	3296-39	8	Nut-Lock, NI
24	105-0369	2	Nut-Crownlock
25	100-8931	2	Track-Soucy, 9.5 Inch
26	3290-473	8	Washer-Belleville
27	105-5802-03	4	Block-Spacer
28	323-14	8	Screw-HH
29	105-0350	2	Screw-Head, Socket
30	3253-7	8	Washer-Lock
31	325-5	8	Screw-HH



Sheet No.:5

## Brake Assembly

Ref. No.	Part No.	Qty.	Description	Ref. No.	Part No.	Qty.	Description
1	322-3	2	Screw-HH	26	32128-20	4	Nut-HF
2	3296-29	4	Nut-Lock, NI	27	98-8444-03	2	Plate-Brake
3	3296-6	1	Nut-Lock, NI	28	3218-2	2	Nut-Jam
4	100-1268	1	Switch-Plunger, Snap Mount	29	3274-86	2	Screw-HSH
5	62-9130	1	Grip-Handle	30	321-5	4	Screw-HH
6	99-6151-03	1	Brake Lever ASM	31	98-8448	2	Stop-Brake
7	105-5809-03	1	Bracket-Switch	32	3290-378	2	Tie-Cable
8	611792	1	Bolt-Shoulder	33	100-1283	2	Cable-Brake
9	3256-22	1	Washer-Flat				
10	3296-42	7	Nut-Lock, NI				
11	3290-221	1	Washer-Spring				
12	93-2364	1	Bolt-Shoulder				
13	3272-9	2	Pin-Cotter				
14	283-62	2	Pin-Clevis				
15	37-8771	2	Bolt-Shoulder				
16	42-3560	2	Bolt-Shoulder				
17	98-8443	2	Lever-Brake				
18	87-4020	4	Spring-Extension				
19	100-4200-03	2	Brake Housing ASM				
20	323-7	4	Screw-HH				
21	3253-5	4	Washer-Lock				
22	3296-47	2	Nut-Lock, NI				
23	98-8446-03	2	Bracket-Cable, Brake				
24	322-4	4	Screw-HH				
25	32151-43	2	Klipring				

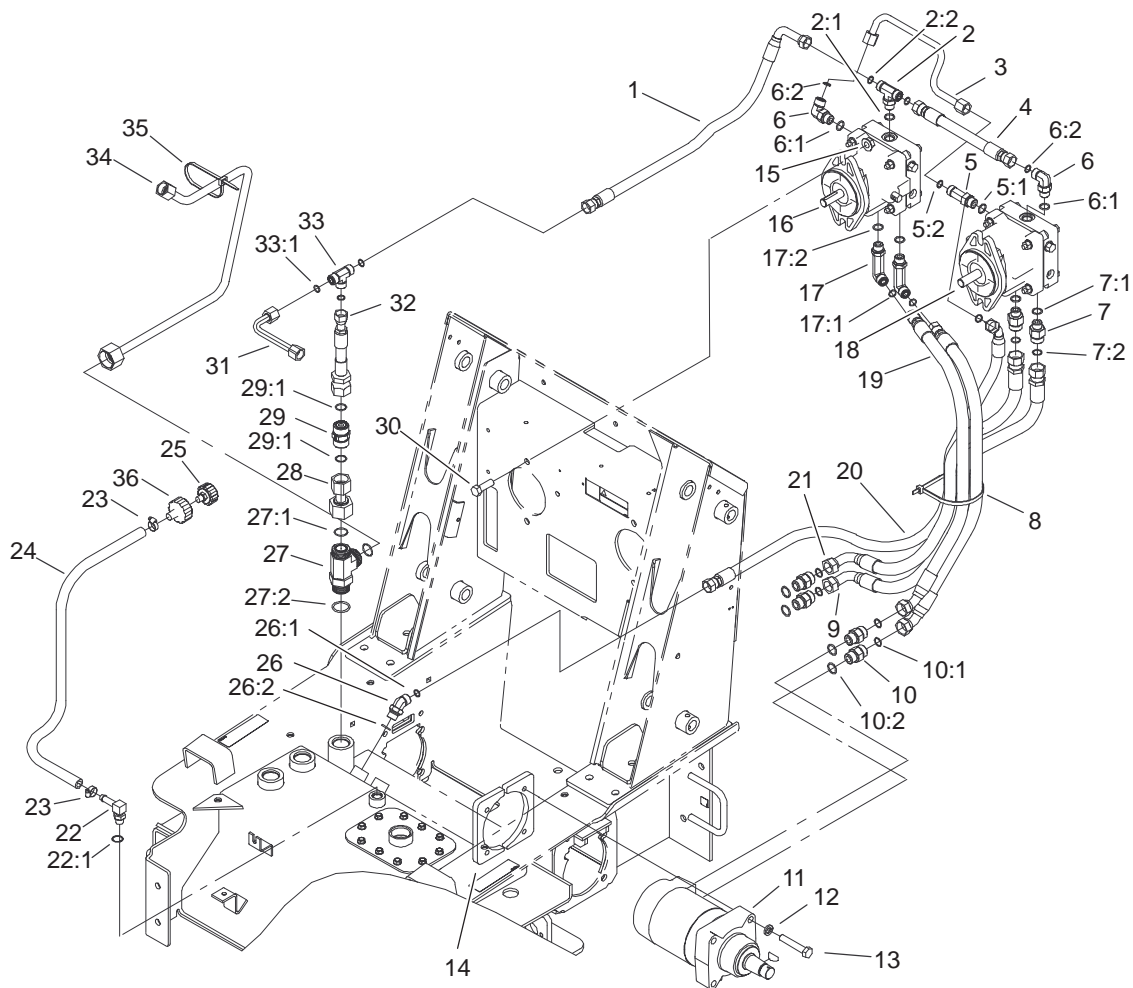


Sheet No.:6

## Loader Tower and Drive Assembly

Ref. No.	Part No.	Qty.	Description
1	104-2843	1	Loader Tower ASM
1:2	104-2842	1	Decal-Panel
1:3	80-8040	1	Decal-Warning
2	3296-39	4	Nut-Lock, NI
3	3296-29	1	Nut-Lock, NI
4	100-6123-01	2	Plate-Stiffener
5	32128-52	10	Locknut-Flange
6	100-6116	10	Screw-HHF
7	104-5739	1	Spacer-Mounting
8	99-6167	1	Idler Arm ASM
8:2	256-132	2	Bushing-Flange
9	3231-26	1	Screw-CARR
10	95-3707	1	Pulley-Idler
11	3256-68	1	Washer-Flat
12	322-13	1	Screw-HH
13	3256-22	9	Washer-Flat
14	61-3330	1	Pulley
15	61-3340	1	Bushing
15:1	100-4208	3	Screw-HH
16	67-7490	1	Key
17	95-3611	1	V-Belt
18	80-6090	2	Key-Pump
19	100-4206	2	Bushing
19:1	100-4208	3	Screw-HH
20	100-4207	2	Sheave
21	105-0383	1	Spring-Extension

Ref. No.	Part No.	Qty.	Description
22	56-6590	1	Bolt-Wheel
23	100-1271	2	Tube-Spacer
24	323-23	2	Screw-HH
25	95-4013	2	Latch ASM
26	3269-13	2	Rivet-Pop



Sheet No.:7

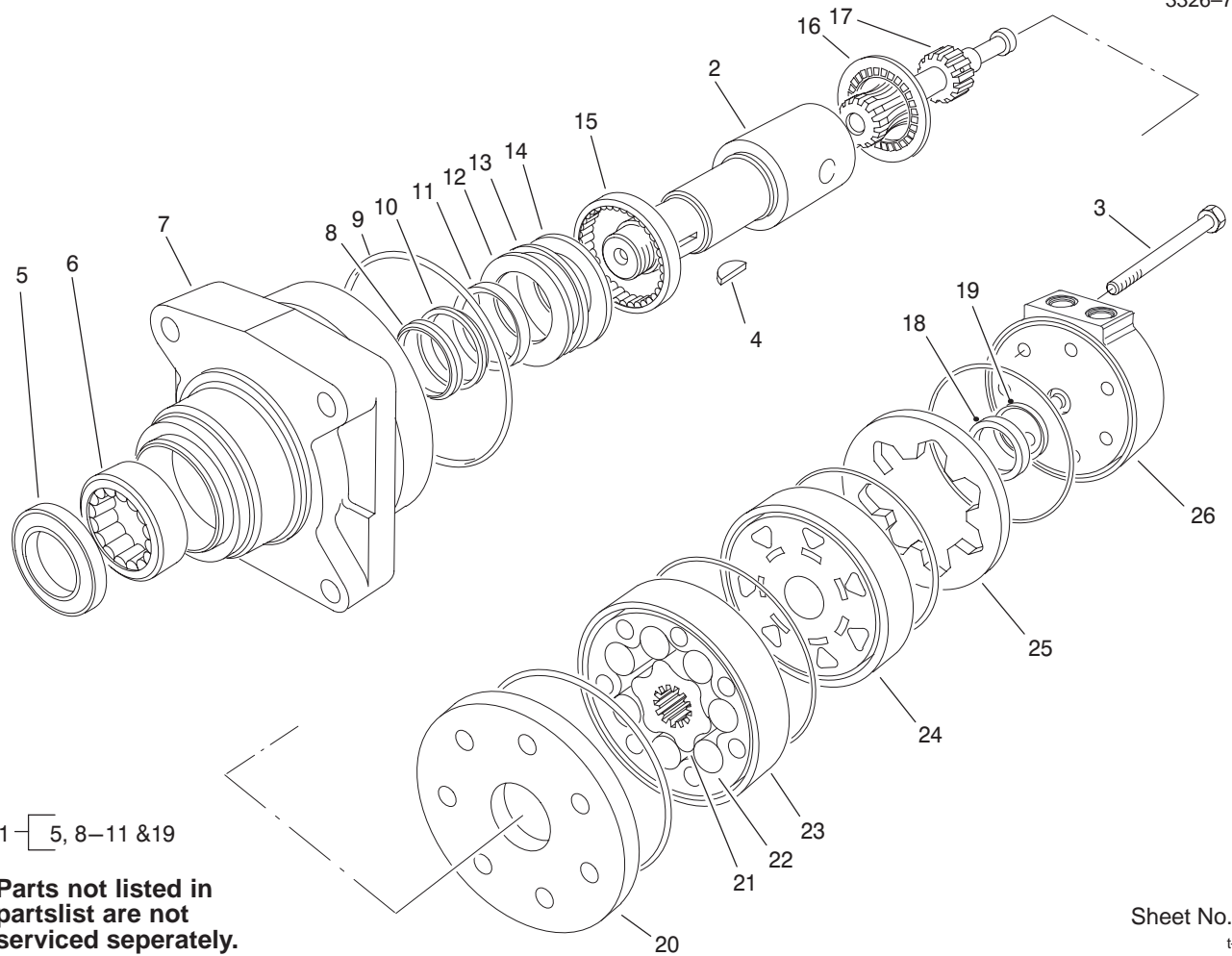
## Traction Hydraulic Assembly

Ref. No.	Part No.	Qty.	Description
1	100-6130	1	HYD Hose ASM
2	340-157	1	Fitting-HYD
2:1	237-79	1	O-Ring
2:2	237-30	2	O-Ring
3	98-0200	1	HYD Tube ASM
4	95-3664	1	HYD Hose ASM
5	340-109	1	Fitting-HYD, Tee
5:1	237-79	1	O-Ring
5:2	237-30	2	O-Ring
6	340-98	2	Fitting-HYD, 90°
6:1	237-79	1	O-Ring
6:2	237-30	1	O-Ring
7	340-155	2	Fitting-HYD
7:1	237-79	1	O-Ring
7:2	237-151	1	O-Ring
8	3334-945	1	Tie-Cable
9	98-0235	1	HYD Hose ASM
10	340-7	4	Adapter
10:1	237-65	1	O-Ring
10:2	237-80	1	O-Ring
11	98-2767	2	Motor-Wheel, HYD
12	3253-7	8	Washer-Lock
13	325-11	8	Screw-HH
14	98-2763-03	4	Plate-Mounting, Wheelmotor
15	32128-23	4	Nut-HF

Ref. No.	Part No.	Qty.	Description
16	98-8431	1	Pump-HYD, RH
17	99-6160	2	Fitting-Elbow, 90°
17:1	237-30	1	O-Ring
17:2	237-79	1	O-Ring
18	98-8432	1	Pump-HYD, LH
19	98-0233	2	HYD Hose ASM
20	98-0201	1	HYD Hose ASM
21	98-0177	1	HYD Hose ASM
22	354-120	1	Fitting-HYD, 90°
22:1	237-79	1	O-Ring
23	2412-36	2	Clamp-Hose
24	98-2708	1	Hose-Vent
25	68-6150	1	Breather-Air
26	340-101	1	Fitting-HYD, 90°
26:1	237-30	1	O-Ring
26:2	237-79	1	O-Ring
27	104-3795	1	Fitting-Tee, HYD
27:1	340-65	2	O-Ring
27:2	237-146	1	O-Ring
28	105-0226	1	HYD Tube ASM
29	99-6161	1	Valve-Check, HYD
29:1	237-58	2	O-Ring
30	325-6	4	Screw-HH
31	95-3517	1	HYD Tube ASM
32	105-0225	1	HYD Hose ASM







1 — 5, 8-11 & 19

Parts not listed in partslist are not serviced seperately.

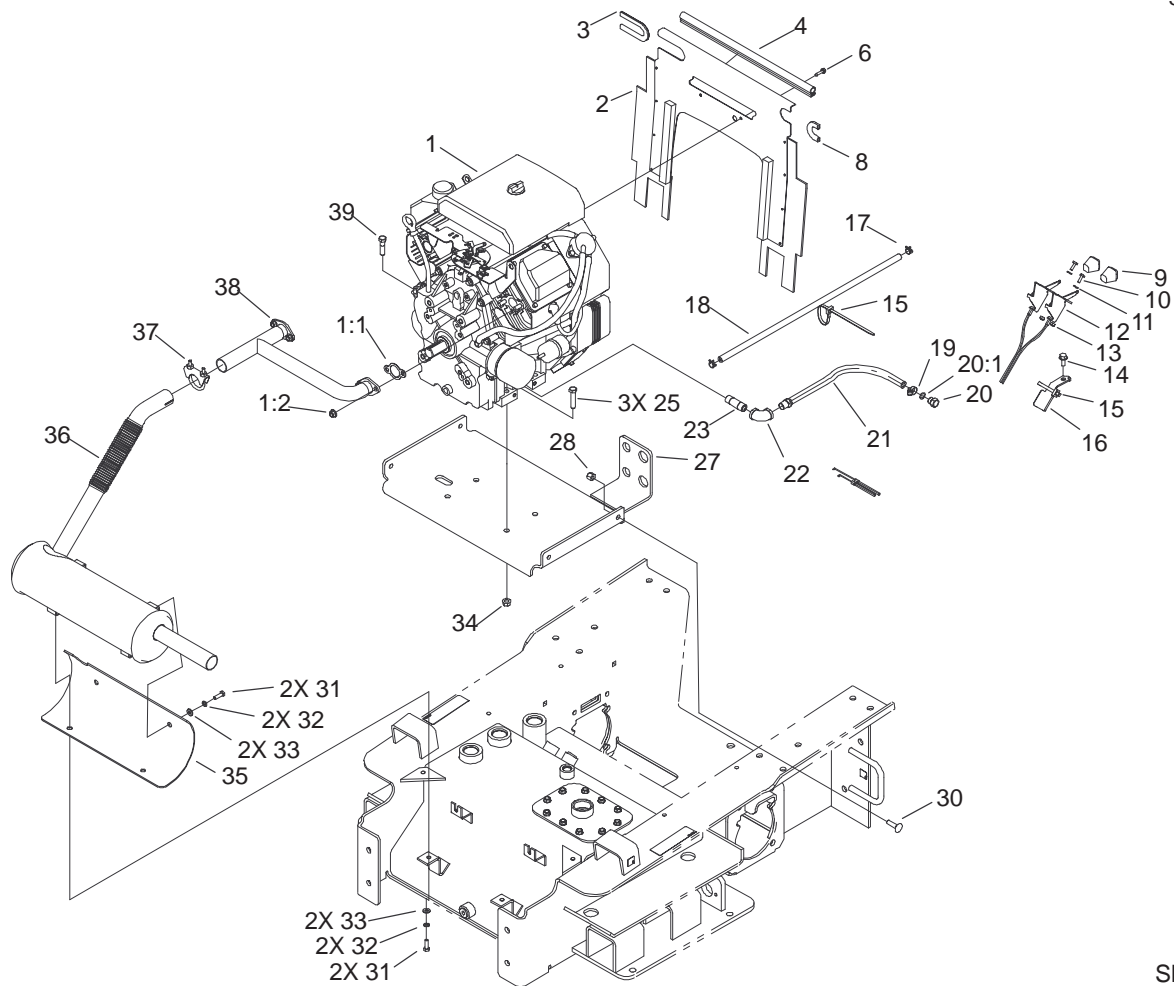
Sheet No.: A1  
t-3620

## Hydraulic Wheel Motor Assembly No. 98-2767

Ref. No.	Part No.	Qty.	Description
1	100-6131	1	Kit-Seal
2	99-3090	1	Coupling-Shaft
3	100-4241	7	Screw-HH
4	3257-42	1	Key-Woodruff

Ref. No.	Part No.	Qty.	Description



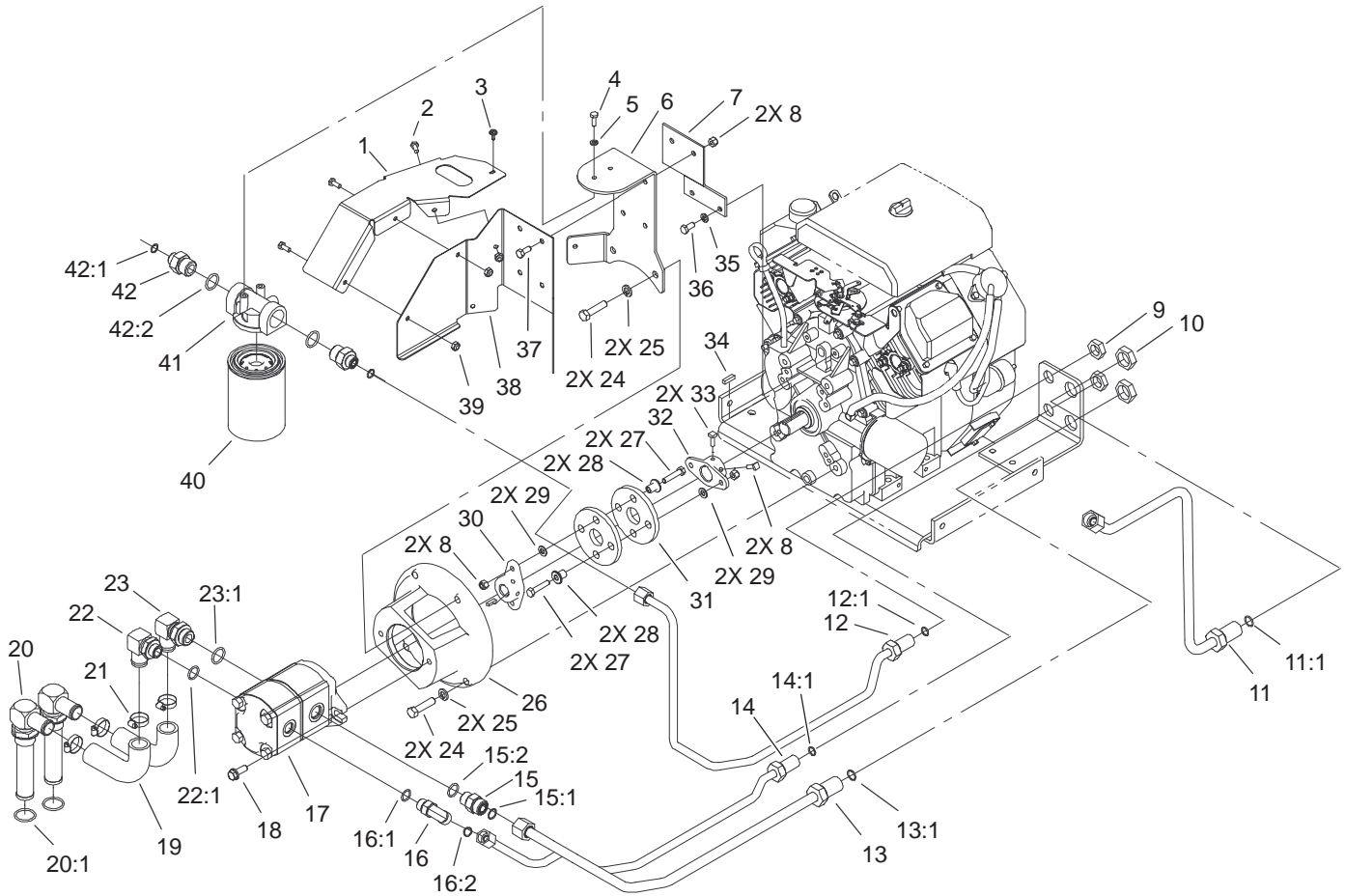


Sheet No.:9

## Engine and Mount Assembly

Ref. No.	Part No.	Qty.	Description	Ref. No.	Part No.	Qty.	Description
☆1		1	Engine-Kohler, Ch25s Ps-68688	27	99-6175-03	1	Engine Mounting Plate ASM
1:1	93-0350	2	Gasket-Exhaust	28	3296-39	4	Nut-Lock, NI
1:2	92-6780	4	Nut-HF	30	3231-28	4	Screw-CARR
2	105-5800	1	Engine Baffle ASM	31	321-5	4	Screw-HH
3	105-0378	1	Seal-Strip, 6.5"	32	3253-3	4	Washer-Lock
4	105-5801	1	Strip-Seal, 16"	33	3256-22	4	Washer-Flat
6	27-0220	2	Screw-Special	34	32128-21	4	Nut-HF
8	105-0377	1	Seal-Strip, 3"	35	98-2762	1	Shield-Heat, Muffler
9	66-0120	2	Knob	36	105-0249	1	Muffler-Exhaust
10	3290-134	4	Screw	37	2112-11	1	Clamp-Muffler
11	3256-21	4	Washer-Flat	38	98-2761	1	Manifold-Crossover
12	99-6173	2	Cable-Throttle	39	323-8	1	Screw-HH
13	3296-2	4	Nut-Lock				
14	32144-70	1	Screw-HH				
15	3290-378	2	Tie-Cable				
16	100-1299-03	1	Guide-Cable				
17	2412-98	2	Clamp				
18	105-0376	1	Hose-Fuel				
19	2412-119	1	Clamp-Worm				
20	353-508	1	Plug				
20:1	237-42	1	O-Ring				
21	100-1256	1	Oil Hose ASM				
22	94-9650	1	Elbow-90°				
23	289-42	1	Nipple				
25	323-9	3	Screw-HH				

☆ Not serviced separately



Sheet No.:10

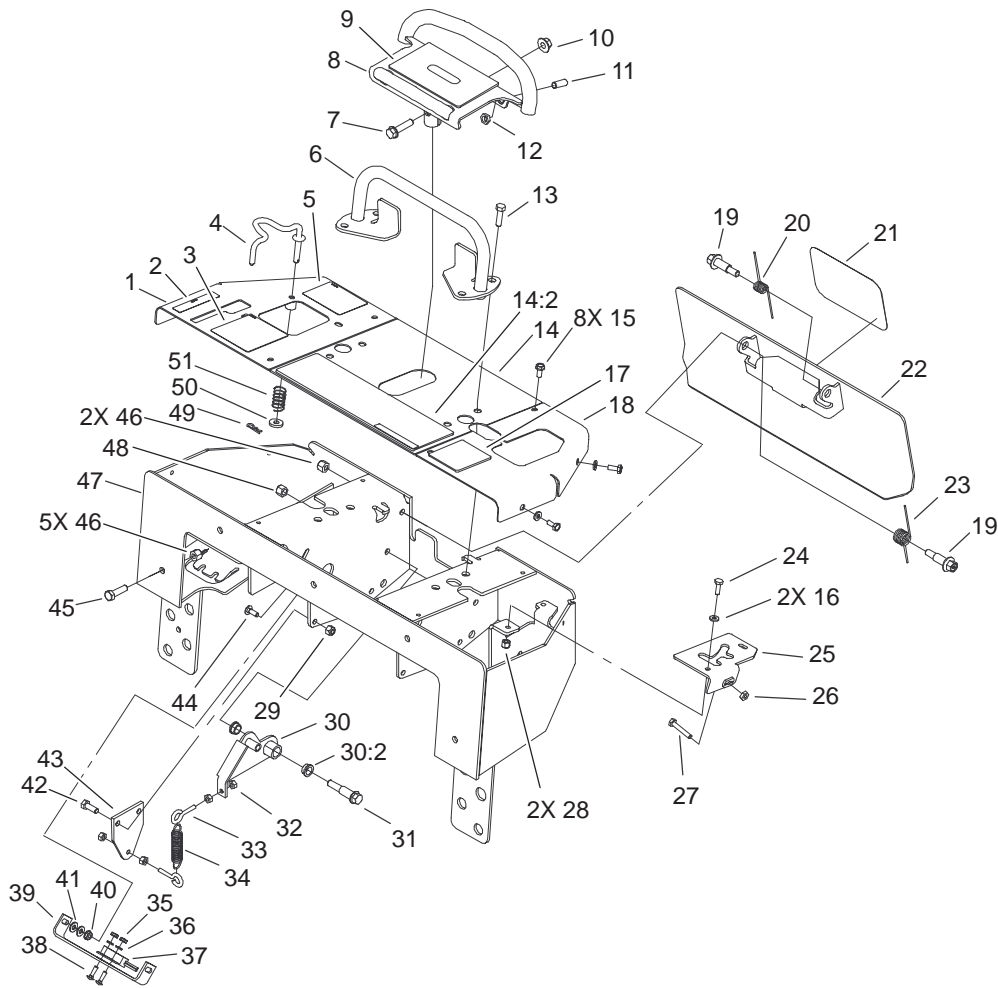
## Hydraulic Pump Assembly

Ref. No.	Part No.	Qty.	Description
1	104-9960	1	Shield-Heat
2	321-39	4	Screw-HH
3	12-5450	1	Screw
4	321-4	2	Screw-HH
5	3253-3	2	Washer-Lock
6	99-6172-03	1	Bracket-Support, Oil Filter
7	99-6171-03	1	Bracket-Support, Oil Filter
8	3296-29	8	Nut-Lock, NI
9	340-127	2	Nut-Bulkhead
10	340-74	2	Locknut-Bulkhead
11	104-5705	1	HYD Tube ASM
11:1	237-65	1	O-Ring
12	98-2780	1	HYD Tube ASM
12:1	237-30	1	O-Ring
13	98-2783	1	HYD Tube ASM
13:1	237-65	1	O-Ring
14	98-2781	1	HYD Tube ASM
14:1	237-30	1	O-Ring
15	340-7	1	Adapter
15:1	237-65	1	O-Ring
15:2	237-80	1	O-Ring
16	340-98	1	Fitting-HYD, 90°
16:1	237-79	1	O-Ring
16:2	237-30	1	O-Ring

Ref. No.	Part No.	Qty.	Description
17	98-2752	1	Pump-Gear, HYD
18	66-9300	2	Screw-HF
19	105-0201	2	Hose-Suction, Formed
20	105-0204	2	Strainer Fitting ASM
20:1	237-146	1	O-Ring
21	2412-34	4	Clamp-Hose
22	61-2710	1	Stem-Hose, 90°
22:1	237-117	1	O-Ring
23	100-4202	1	Fitting-90°
23:1	237-81	1	O-Ring
24	324-7	4	Screw-HH
25	3253-6	4	Washer-Lock
26	98-2751	1	Mount-Pump
27	322-7	4	Screw-HH
28	71-4411	4	Spacer
29	3256-23	4	Washer-Flat
30	49-9600	1	Hub-Pump
31	44-2230	2	Coupling-Rubber
32	27-1960	1	Hub-Engine
33	3241-6	4	Screw-SQH
34	10-7070	1	Key-Square
35	3253-4	2	Washer-Lock
36	33114-020	2	Screw-HH
37	322-3	4	Screw-HH
38	100-6114	1	Shield-Heat, Filter







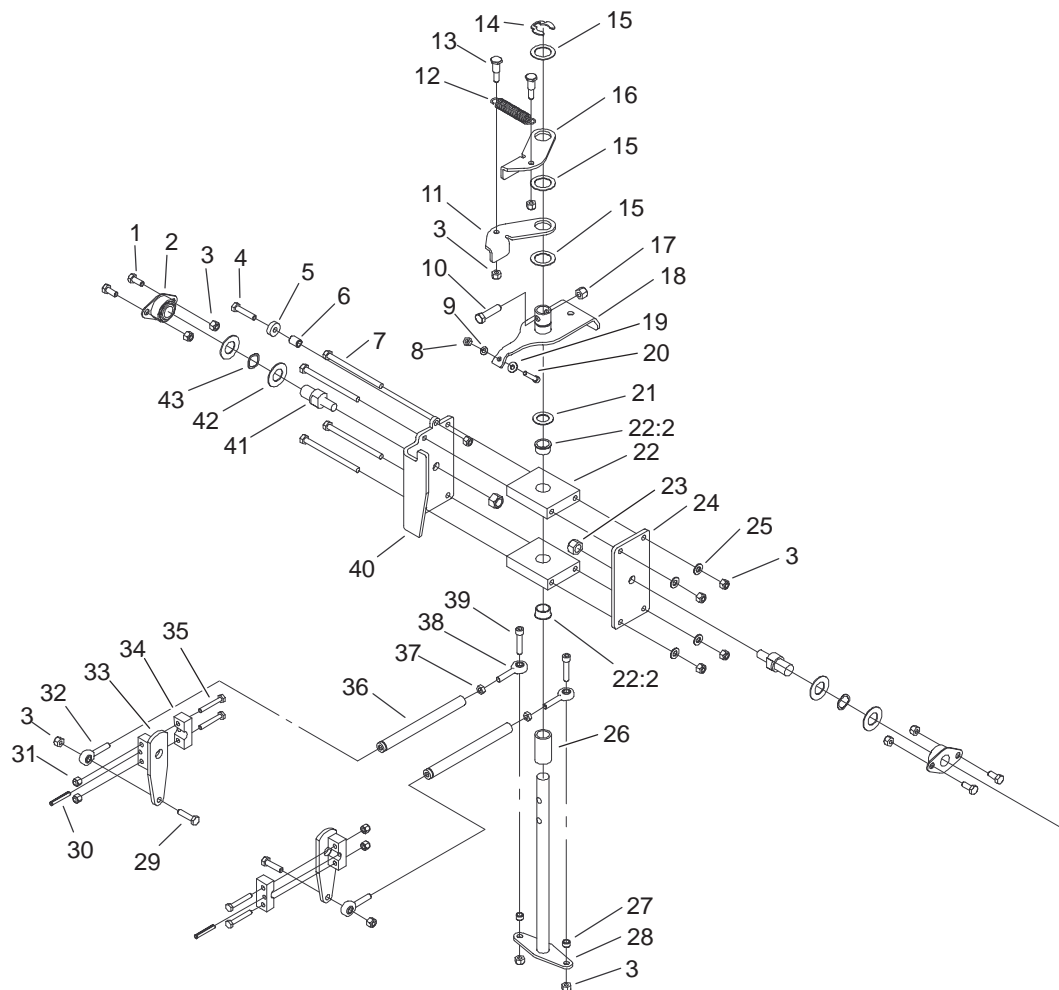
Sheet No.:11

## Control Panel Assembly

Ref. No.	Part No.	Qty.	Description	Ref. No.	Part No.	Qty.	Description
1	105-5824-01	1	RH Panel ASM	26	3218-1	1	Nut-Jam
2	104-2838	1	Decal-Brake	27	321-9	1	Screw-HH
3	104-2837	1	Decal-Loader	28	3296-8	2	Nut-Lock NI
4	104-2833	1	Rod-Interlock	29	3296-29	2	Nut-Lock, NI
5	104-2844	1	Decal-Interlock	30	100-4203	1	Neutral Centering Lever ASM
6	98-8400-03	1	Reference Bar ASM	30:2	256-156	2	Bushing-Flange
7	3234-18	1	Screw-HHF	31	66-0560	1	Bolt-Shoulder
8	104-9970-03	1	Control Handle ASM	32	3217-5	4	Nut-Hex
9	100-6138	1	Decal-Traction	33	71-2870	2	Bolt-Eye
10	32128-43	1	Nut-Flange	34	105-1210	1	Spring-Extension
11	3247-6	2	Screw-Set	35	32149-7	2	Nut-Keps
12	3218-3	2	Nut-Jam	36	3256-51	2	Washer-Flat
13	322-16	4	Screw-HH	37	100-1270	1	Switch-Proximity
14	100-6144	1	Center Panel ASM	38	3229-20	2	Screw-CARR
14:2	100-6140	1	Decal-Danger	39	100-1263	1	Plate-Switch
15	32144-44	8	Screw-HWH	40	32149-2	2	Nut
16	3256-16	2	Washer-Flat	41	3256-22	4	Washer-Flat
17	100-6136	1	Decal-Auxiliary	42	322-4	2	Screw-HH
18	98-8428-01	1	Panel-LH	43	100-1261-03	1	Bracket-Spring
19	62-1330	2	Bolt-Shoulder	44	3229-1	2	Screw-CARR
20	98-8424	1	Spring-Torsion, RH	45	323-7	5	Screw-HH
21	105-1217	1	Decal-Toro	46	3296-39	7	Nut-Lock, NI
22	98-8417-03	1	Reverse Plate ASM	47	95-3540-01	1	Control Panel ASM
23	98-8425	1	Spring-Torsion, LH	48	3296-6	1	Nut-Lock, NI
24	321-4	2	Screw-HH	49	3290-307	1	Pin-Hair
25	100-6126-01	1	Auxiliary Stop ASM				



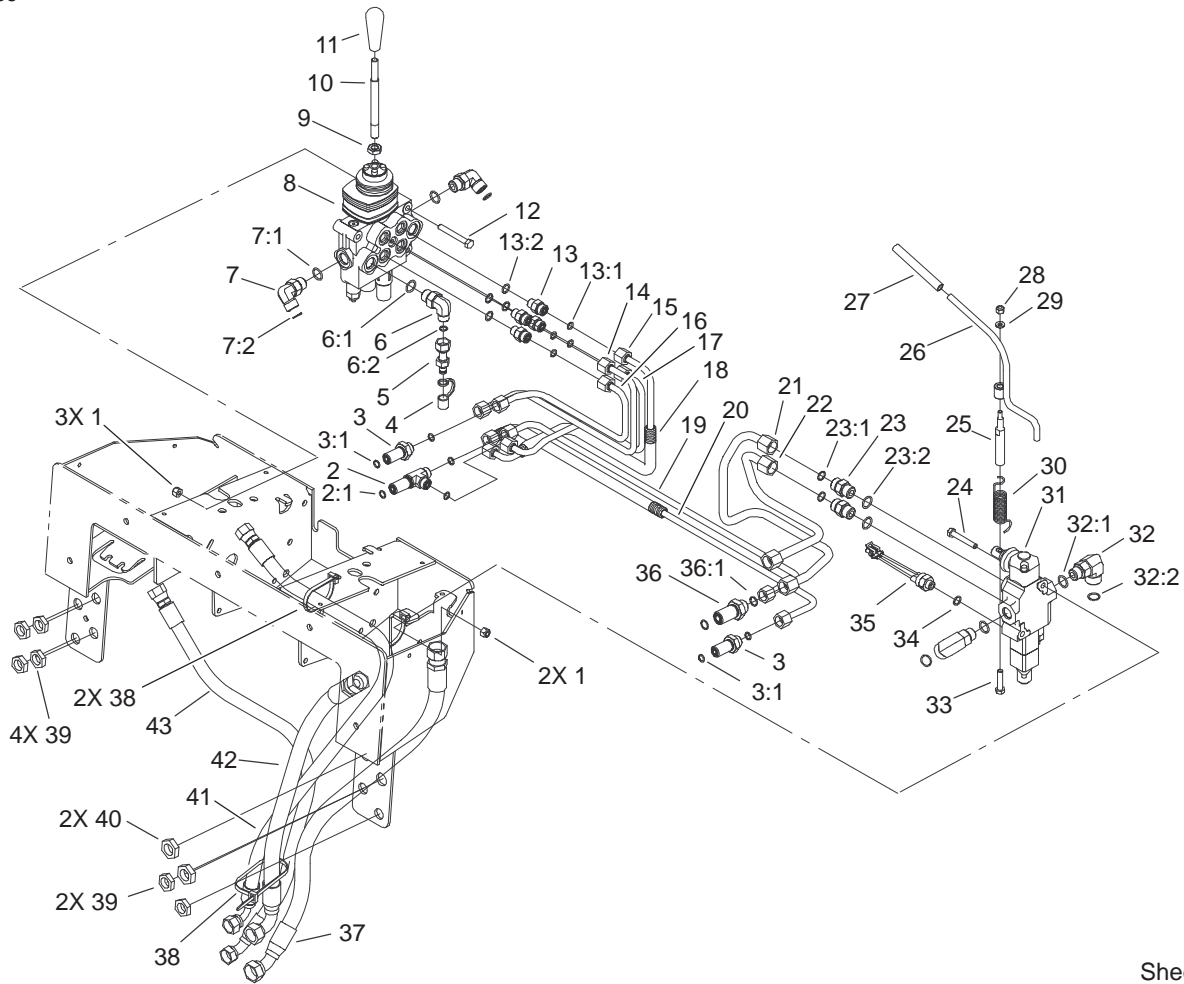




Sheet No.:12

## Traction Control Assembly

Ref. No.	Part No.	Qty.	Description	Ref. No.	Part No.	Qty.	Description
1	322-3	4	Screw-HH	25	3256-23	4	Washer-Flat
2	68-2970	2	Bushing	26	104-9974	1	Spacer-Pivot, Rod
3	3296-29	15	Nut-Lock, NI	27	92-3133	2	Spacer-Lever, Traction
4	322-7	1	Screw-HH	28	98-8411	1	Drive Rod ASM
5	251-259	1	Bearing	29	322-6	2	Screw-HH
6	88-7450	1	Spacer-Lever, Control	30	100-6148	2	Pin-Spring, Metric
7	322-38	4	Screw-HH	31	3296-8	4	Nut-Lock NI
8	3217-5	1	Nut-Hex	32	2411-53	2	Bearing-Rod End, LH
9	3253-3	1	Washer-Lock	33	98-8433	2	Pump Lever ASM
10	323-8	1	Screw-HH	34	98-8434	2	Clamp-Traction
11	98-8407	1	Lever-Return, RH	35	321-10	4	Screw-HH
12	105-1210	1	Spring-Extension	36	95-3711	2	Rod-Linkage
13	63-2650	2	Screw-Shoulder	37	3220-2	2	Nut
14	32151-91	1	Ring-Retaining	38	2411-52	2	Bearing-Rod End, RH
15	3256-42	3	Washer-Flat	39	3274-83	2	Screw-HSH
16	98-8408	1	Lever-Return, LH	40	104-9976-03	1	Bracket-Pivot, RH
17	3296-39	1	Nut-Lock, NI	41	95-3684	2	Shaft-Arm, Pivot
18	104-9968	1	Pivot Lever ASM	42	3256-39	6	Washer-Flat
19	3256-22	1	Washer-Flat	43	95-3703	2	Washer-Spring, Wave
20	3274-51	1	Screw-HSH				
21	257-8	1	Washer-Thrust				
22	104-9972	2	Bearing Support Block ASM				
22:2	256-252	1	Bearing-Flange				
23	3296-23	2	Nut-Lock, NI				
24	104-9975-03	1	Bracket-Pivot, LH				

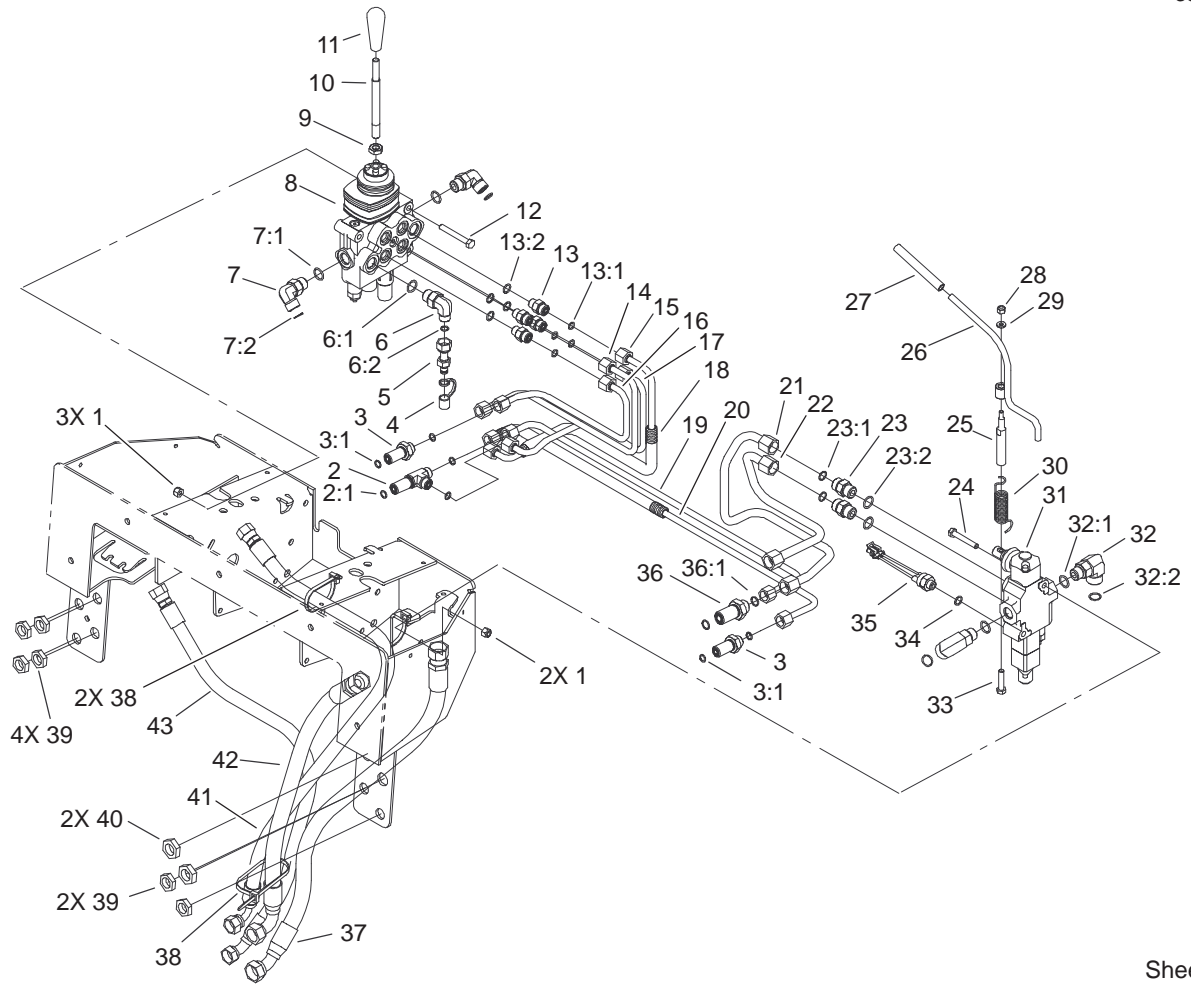


Sheet No.:13

## Principal Hydraulic Assembly

Ref. No.	Part No.	Qty.	Description
1	3296-29	5	Nut-Lock, NI
2	340-68	2	Fitting-Tee, Bulkhead
2:1	237-22	3	O-Ring
3	340-71	4	Fitting-Straight, Bulkhead
3:1	237-22	2	O-Ring
4	354-79	1	Cap-Dust, Yellow
5	86-5480	1	Nipple-Test
6	340-18	1	Fitting-HYD, 90°
6:1	237-79	1	O-Ring
6:2	237-22	1	O-Ring
7	340-98	2	Fitting-HYD, 90°
7:1	237-79	1	O-Ring
7:2	237-30	1	O-Ring
8	95-3536	1	Valve-2 Spool
9	51-2070	1	Nut
10	95-3569	1	Shaft-Handle, Lift/Tilt
11	98-0152	1	Knob-Tapered
12	322-12	3	Screw-HH
13	340-2	4	Fitting-HYD, Straight
13:1	237-22	1	O-Ring
13:2	237-42	1	O-Ring
14	98-2788	1	HYD Tube ASM
15	98-2784	1	HYD Tube ASM
16	98-2789	1	HYD Tube ASM
17	98-2785	1	HYD Tube ASM

Ref. No.	Part No.	Qty.	Description
18	100-1287	2	Conduit-Convolutd
19	98-2787	1	HYD Tube ASM
20	98-2786	1	HYD Tube ASM
21	98-2790	1	HYD Tube ASM
22	98-2791	1	HYD Tube ASM
23	340-4	2	Adapter
23:1	237-30	1	O-Ring
23:2	237-79	1	O-Ring
24	322-11	2	Screw-HH
25	104-2827	1	Spacer-Hiflo
26	100-4246	1	Auxiliary Lever ASM
27	92-6798	1	Cap-Rod, Tilt
28	3296-42	1	Nut-Lock, NI
29	3256-16	1	Washer-Flat
30	100-6129	1	Spring-Torsion
31	104-2831	1	Valve-1 Spool
32	340-153	2	Fitting-HYD
32:1	237-79	1	O-Ring
32:2	237-151	1	O-Ring
33	48-7740	1	Screw
34	237-42	1	O-Ring
35	72-4310	1	Switch
36	340-161	2	Fitting-Bulkhead
36:1	237-30	2	O-Ring
37	98-0203	1	HYD Hose ASM
38	3290-378	3	Tie-Cable

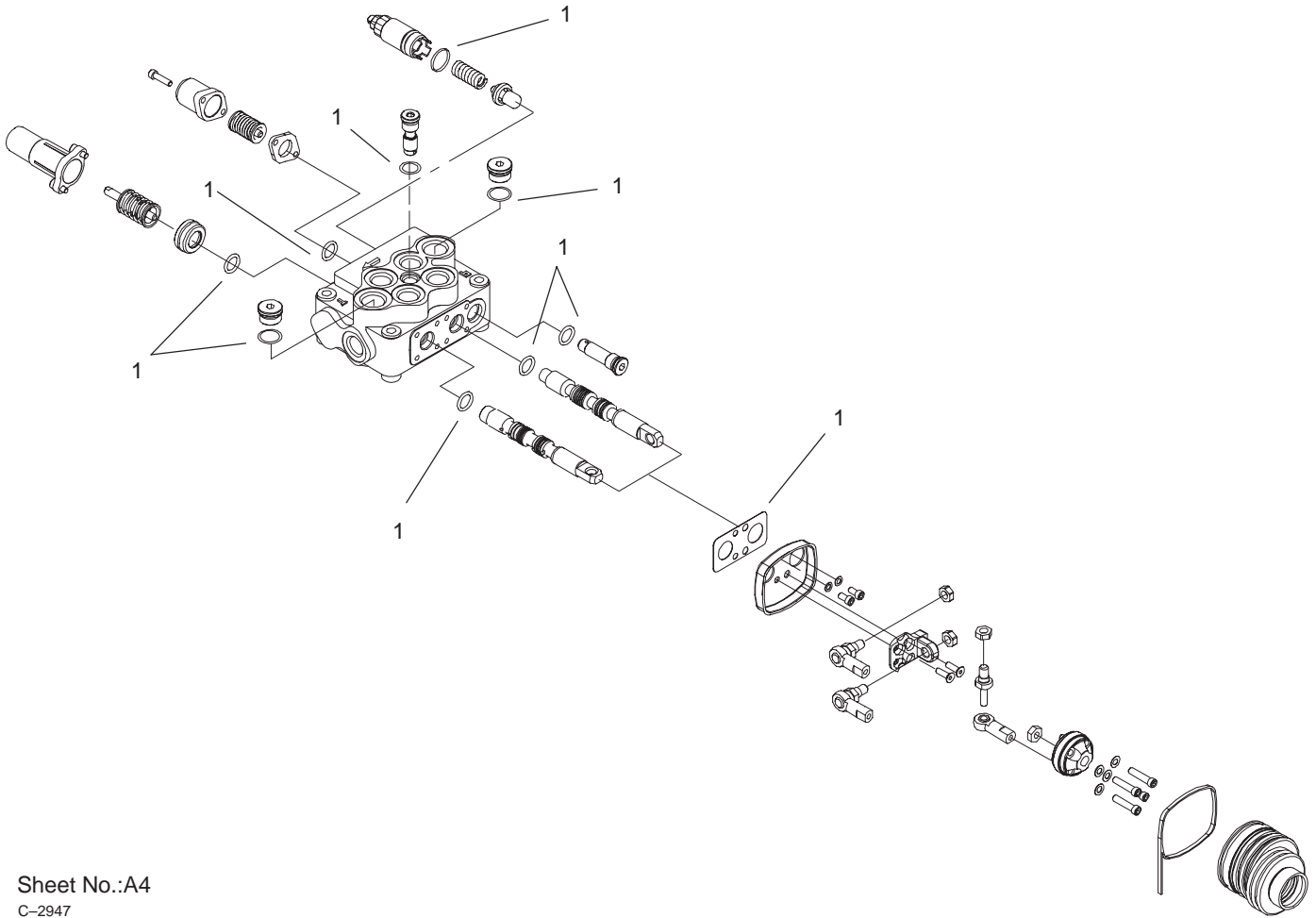


Sheet No.:13

## Principal Hydraulic Assembly (Continued)

Ref. No.	Part No.	Qty.	Description
39	340-70	6	Locknut-Bulkhead
40	340-127	2	Nut-Bulkhead
41	95-3738	1	HYD Hose ASM
42	104-9961	1	HYD Hose ASM
43	95-3737	1	HYD Hose ASM

Ref. No.	Part No.	Qty.	Description



Sheet No.:A4  
C-2947

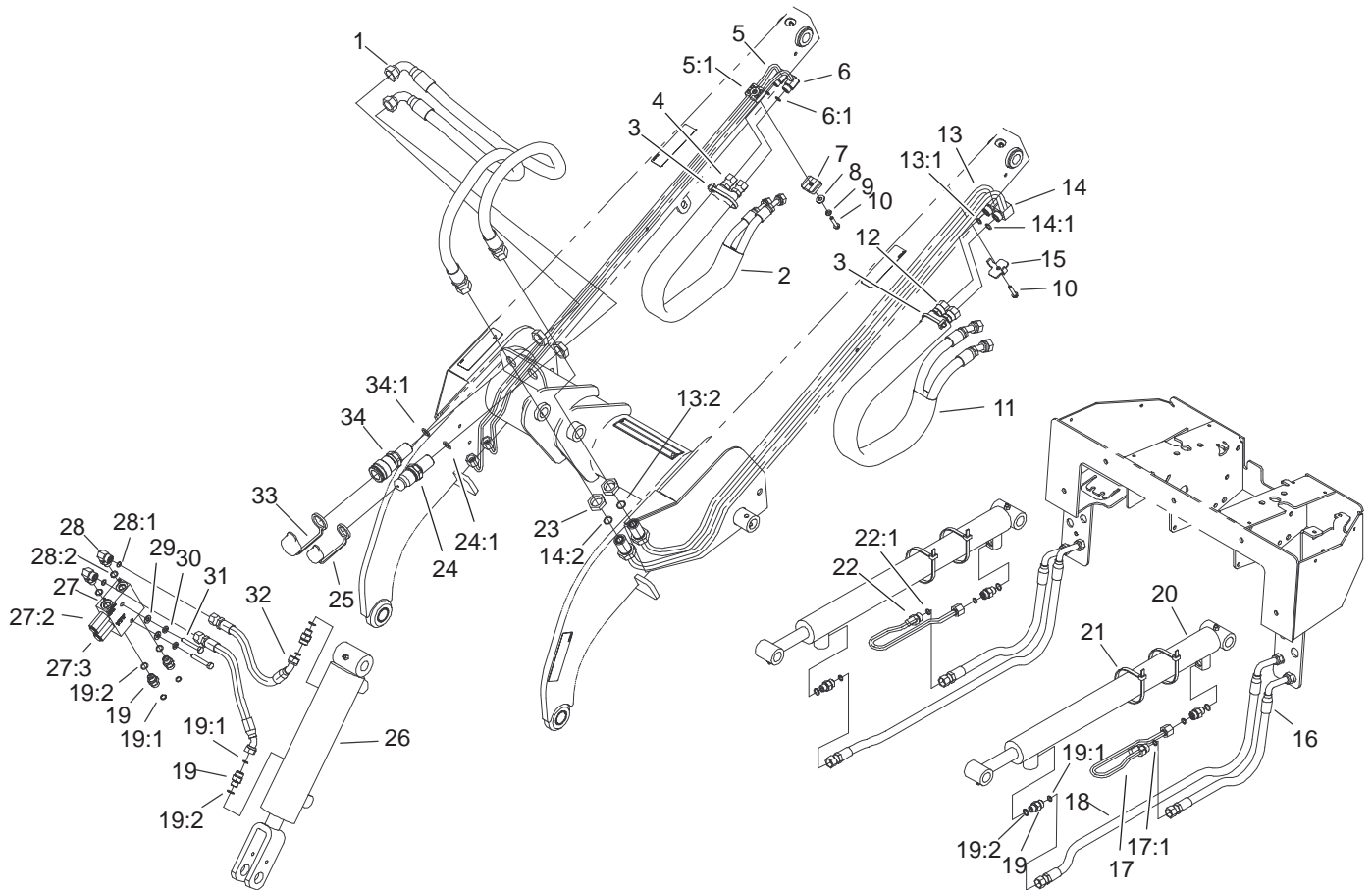
## 2-Spool Valve Assembly No. 95-3536

Ref. No.	Part No.	Qty.	Description
1	100-4249	1	Seal Kit

Ref. No.	Part No.	Qty.	Description







Sheet No.:15

## Loader Arm Hydraulic Assembly

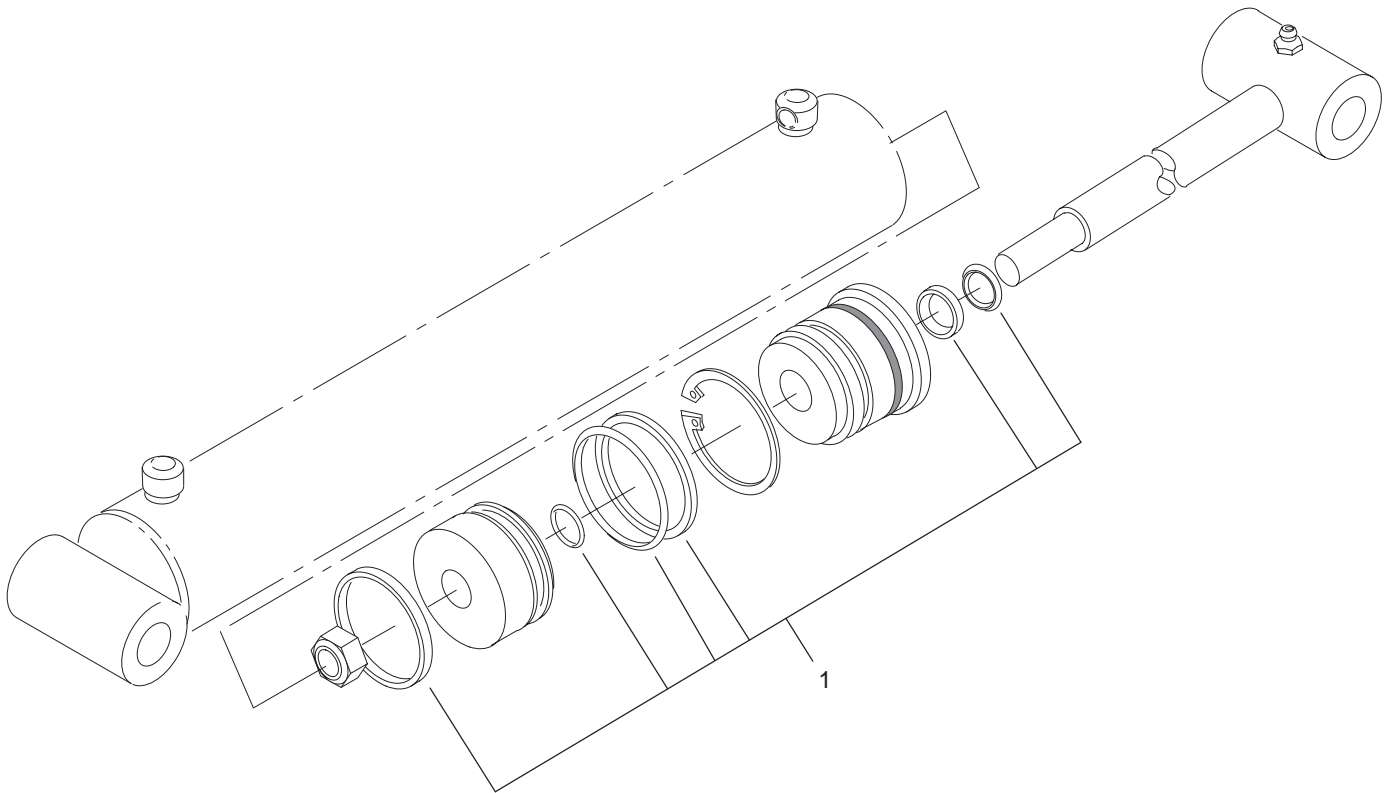
Ref. No.	Part No.	Qty.	Description
1	99-6193	2	Hose ASM
2	100-6127	1	Sleeve-Protective
3	3290-378	2	Tie-Cable
4	98-0213	2	HYD Hose ASM
5	104-9965	1	HYD Tube ASM
5:1	237-22	1	O-Ring
6	104-9964	1	HYD Tube ASM
6:1	237-22	1	O-Ring
7	56-7973	2	Clamp-Tube
8	3256-2	1	Washer-Flat
9	3253-3	1	Washer-Lock
10	32144-110	2	Screw-HWH
11	100-6128	1	Sleeve-Protective
12	98-0242	2	HYD Hose ASM
13	104-9962	1	HYD Tube ASM
13:1	237-30	1	O-Ring
13:2	237-65	1	O-Ring
14	104-9963	1	HYD Tube ASM
14:1	237-30	1	O-Ring
14:2	237-65	1	O-Ring
15	98-0237	1	Plate-Clamp, Tube
16	98-0216	2	HYD Hose ASM
17	100-1259	1	HYD Tube ASM
17:1	237-22	1	O-Ring
18	98-0217	2	HYD Hose ASM
19	340-2	8	Fitting-HYD, Straight

19:1	237-22	1	O-Ring
19:2	237-42	1	O-Ring
20	99-6162	2	Cylinder-Lift
21	3334-945	4	Tie-Cable
22	100-1258	1	HYD Tube ASM
22:1	237-22	1	O-Ring
23	340-74	4	Locknut-Bulkhead
24	105-8395	1	Bulkhead Nipple ASM
24:1	237-65	1	O-Ring
*24:2	100-6120	1	Seal Kit
25	100-8815	1	Cap-Dust, Nipple
26	95-3578	1	Cylinder-Tilt
27	100-4205	1	Valve-Relief, Crossover
*27:1	100-4219	2	Seal Kit
27:2	100-4220	1	Cartridge-Relief
27:3	100-4221	1	Cartridge-Relief
28	340-77	2	Fitting-HYD, 90°
28:1	237-22	1	O-Ring
28:2	237-42	1	O-Ring
29	3256-23	2	Washer-Flat
30	3253-4	2	Washer-Lock
31	322-10	2	Screw-HH
32	98-0207	2	HYD Hose ASM
33	100-8816	1	Cap-Dust, Coupler

\* Not illustrated





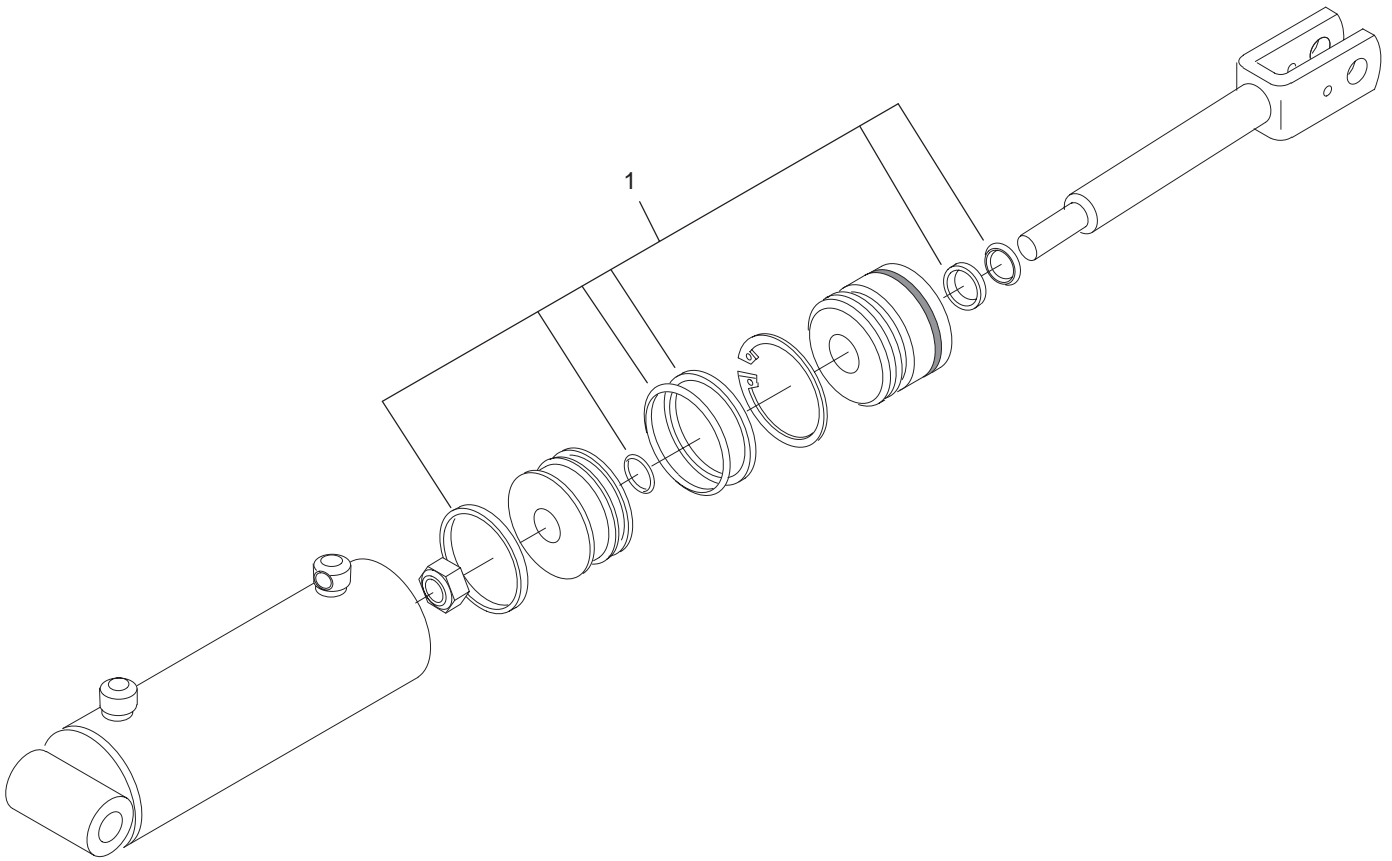


Sheet No.:A6  
T-3619

## Lift Cylinder Assembly No. 99-6162

Ref. No.	Part No.	Qty.	Description
1	100-6107	1	Seal Kit

Ref. No.	Part No.	Qty.	Description



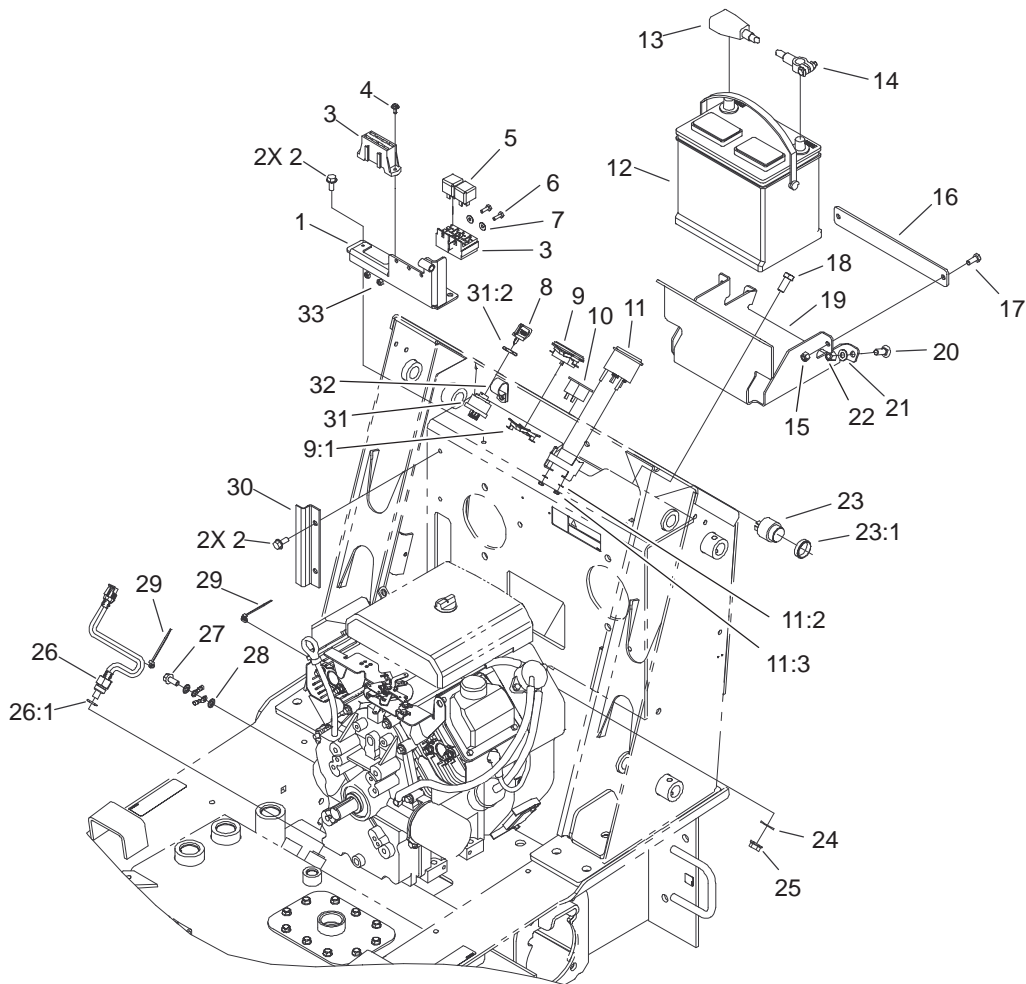
Sheet No.:A7  
T-3618

### Tilt Cylinder Assembly No. 95-3578

Ref. No.	Part No.	Qty.	Description
1	100-6108	1	Seal Kit

Ref. No.	Part No.	Qty.	Description
----------	----------	------	-------------





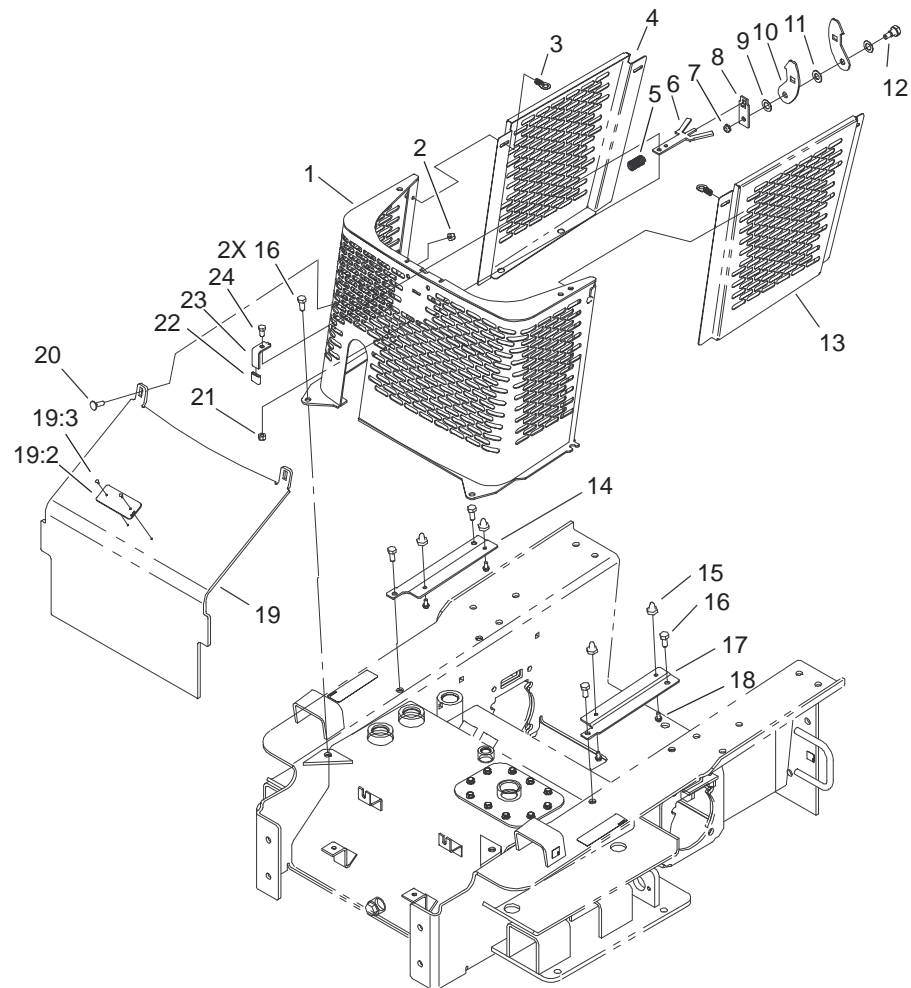
Sheet No.:17

## Electrical System Assembly

Ref. No.	Part No.	Qty.	Description
1	100-1291-03	1	Bracket-Fuse/Relay
2	32144-70	4	Screw-HH
3	106-4152	1	Harness-Wire
*3:1	114594	1	Fuse-10 Amp
*3:2	109102	1	Fuse-25 Amp
*3:3	NN10277	1	Fuse-30 Amp
*3:4	109355	1	Fuse-15 Amp
4	12-5450	2	Screw
5	98-7249	2	Relay
6	3290-134	2	Screw
7	3256-49	2	Washer-Flat
8	63-8360	1	Key-Ignition
9	104-7427	1	Hourmeter-Inductive
9:1	104-4234	1	Clip-Mounting
10	104-2839	1	Light-Temp, Oil
11	66-2940	1	Gauge-Fuel
11:2	3254-1	2	Washer-Lock, Internal
11:3	3217-27	2	Nut-Hex
12	104-9979	1	Battery (Dry)
13	99-6185	1	Cable-Battery, Positive
14	99-6186	1	Cable-Battery, Negative
15	3296-29	2	Nut-Lock, NI
16	105-0371-01	1	Clamp-Battery
17	322-3	2	Screw-HH

Ref. No.	Part No.	Qty.	Description
18	324-4	2	Screw-HH
19	105-0370-01	1	Tray-Mounting, Battery
20	3231-22	2	Screw-CARR
21	3256-38	2	Washer-Flat
22	3296-39	2	Nut-Lock, NI
23	80-9330	1	Alarm-Audio
23:1	104-5107	1	Nut-Plastic, Knurled
24	3256-4	2	Washer-Flat
25	32128-42	2	Nut-HF
26	98-2765	1	Sensor-Temperature
26:1	237-79	1	O-Ring
27	33104-020	1	Screw-HHF
28	3255-8	2	Washer-Lock/Ext
29	3290-381	2	Tie-Cable
30	100-6117-01	1	Shield-Wiring
31	88-9830	1	Key Switch ASM
31:2	218-461	1	Nut-HH
32	2412-41	1	Clamp
33	3296-2	2	Nut-Lock

\* Not illustrated

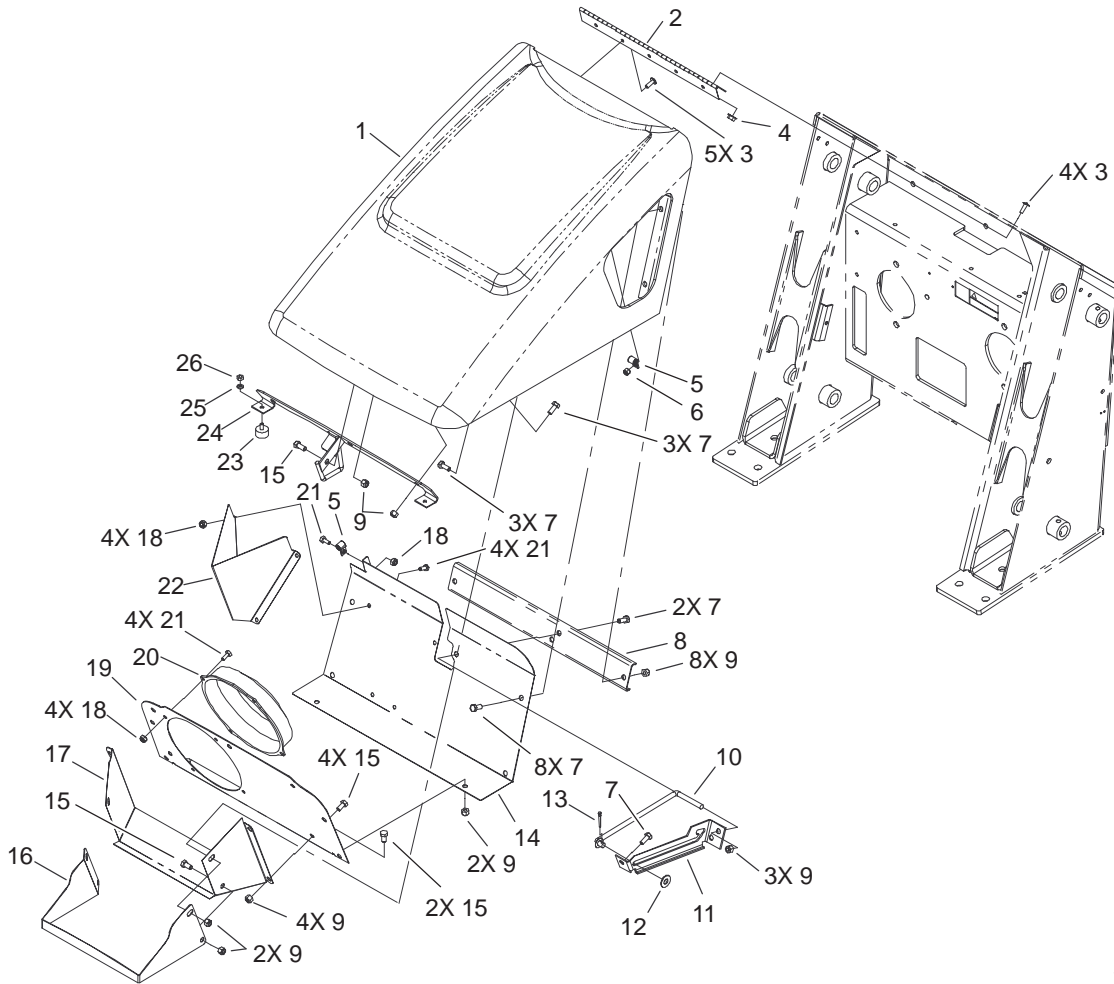


Sheet No.:18

## Grill Assembly

Ref. No.	Part No.	Qty.	Description	Ref. No.	Part No.	Qty.	Description
1	100-1282-03	1	Grill ASM	22	100-1655	1	Grip-Handle
2	3296-29	2	Nut-Lock, NI	23	100-4223	1	Handle-Latch
3	95-4013	2	Latch ASM	24	322-2	1	Screw-HH
4	105-0380-03	1	Panel-Side, RH				
5	100-6102	1	Spring-Compression				
6	100-4226	1	Lever-Latch				
7	3296-59	1	Nut-Lock, NI				
8	100-4225	1	Spacer-Latch				
9	47-2910	1	Washer-Thrust				
10	100-4224	2	Latch-Hood				
11	257-10	2	Washer-Thrust				
12	27-5240	1	Bolt-Shoulder				
13	105-0379-03	1	Panel-Side, LH				
14	100-1280-03	1	Support-Side Panel, RH				
15	95-3989	4	Mount-Sidepanel				
16	95-1726	6	Screw-Tapite W/Patch				
17	100-1281-03	1	Support-Side Panel, LH				
18	46-8093	4	Screw-Plastite				
19	105-0395	1	Heat Shield ASM				
19:2	80-8290	1	Plate-Surface, Hot				
19:3	3269-31	2	Rivet-Pop				
20	3230-28	2	Screw-CARR				
21	3296-29	1	Nut-Lock, NI				





Sheet No.:20

## Hood Assembly

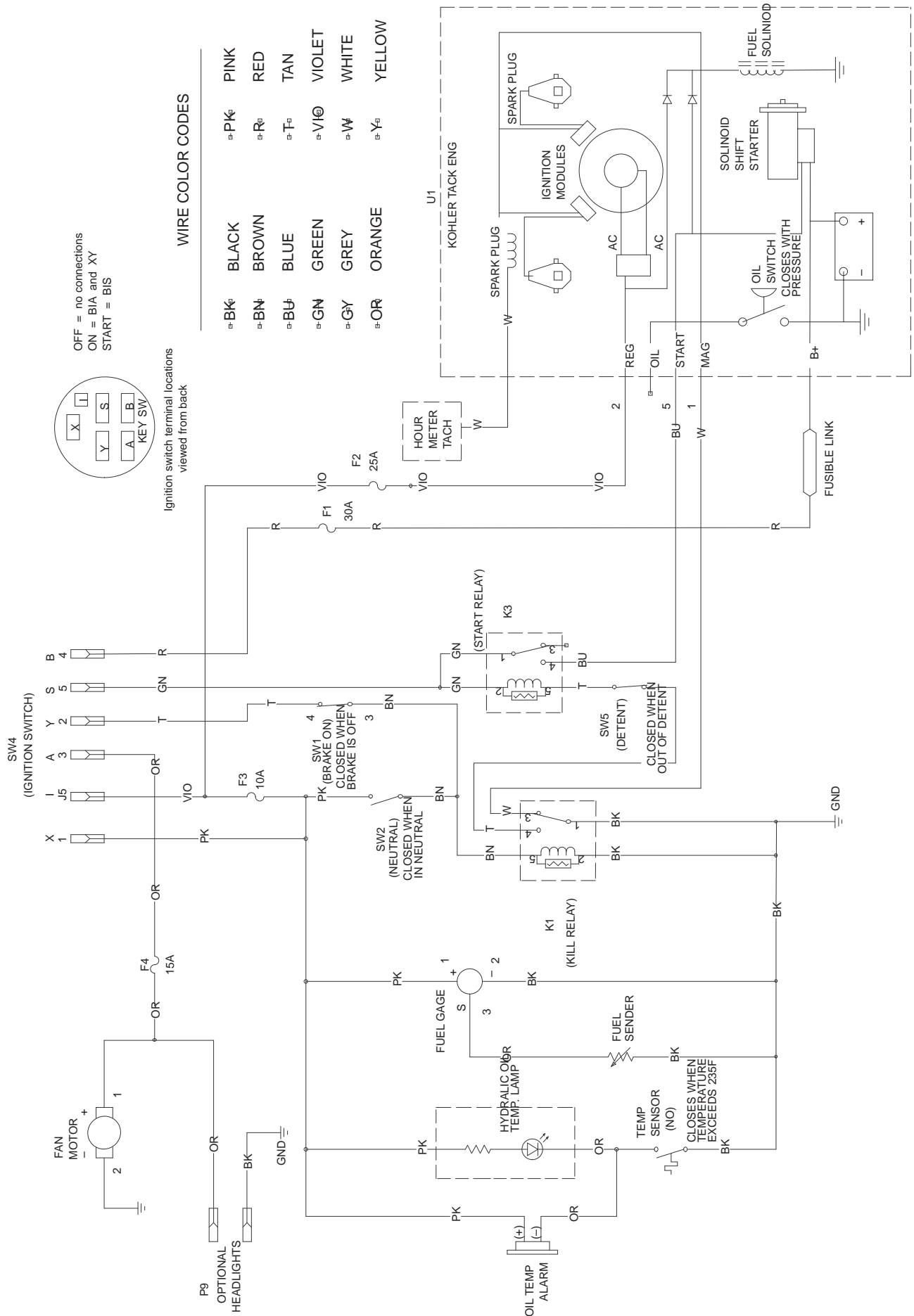
Ref. No.	Part No.	Qty.	Description
1	100-4222	1	Engine Hood ASM
2	100-1284	1	Hinge-Hood
3	9114604	9	Screw-Head, Truss
4	32128-33	4	Nut-HF
5	2412-91	2	Clamp
6	3296-42	5	Nut-Lock, NI
7	322-3	17	Screw-HH
8	100-4212-03	1	Support-Bracket, Rod/Hood
9	3296-29	25	Nut-Lock, NI
10	100-4229	1	Rod-Support, Hood
11	100-1292-03	1	Bracket-Rod/Hood
12	3256-4	1	Washer-Flat
13	3272-11	1	Pin-Cotter
14	104-2815-03	1	Panel-Rack, Fan
15	322-2	8	Screw-HH
16	104-2813-03	1	Shroud-Fan, Front
17	104-2812-03	1	Shroud-Fan
18	3296-16	9	Nut-Lock, NI
19	104-2814-03	1	Plate-Baffle, Fan
20	104-2809	1	Fan-12v
21	321-3	9	Screw-HH
22	104-2811-03	1	Baffle-Fan
23	240-14	2	Bumper-Rubber
24	100-1297-03	1	Rod Latch ASM

Ref. No.	Part No.	Qty.	Description
25	3253-3	2	Washer-Lock
26	3217-5	2	Nut-Hex

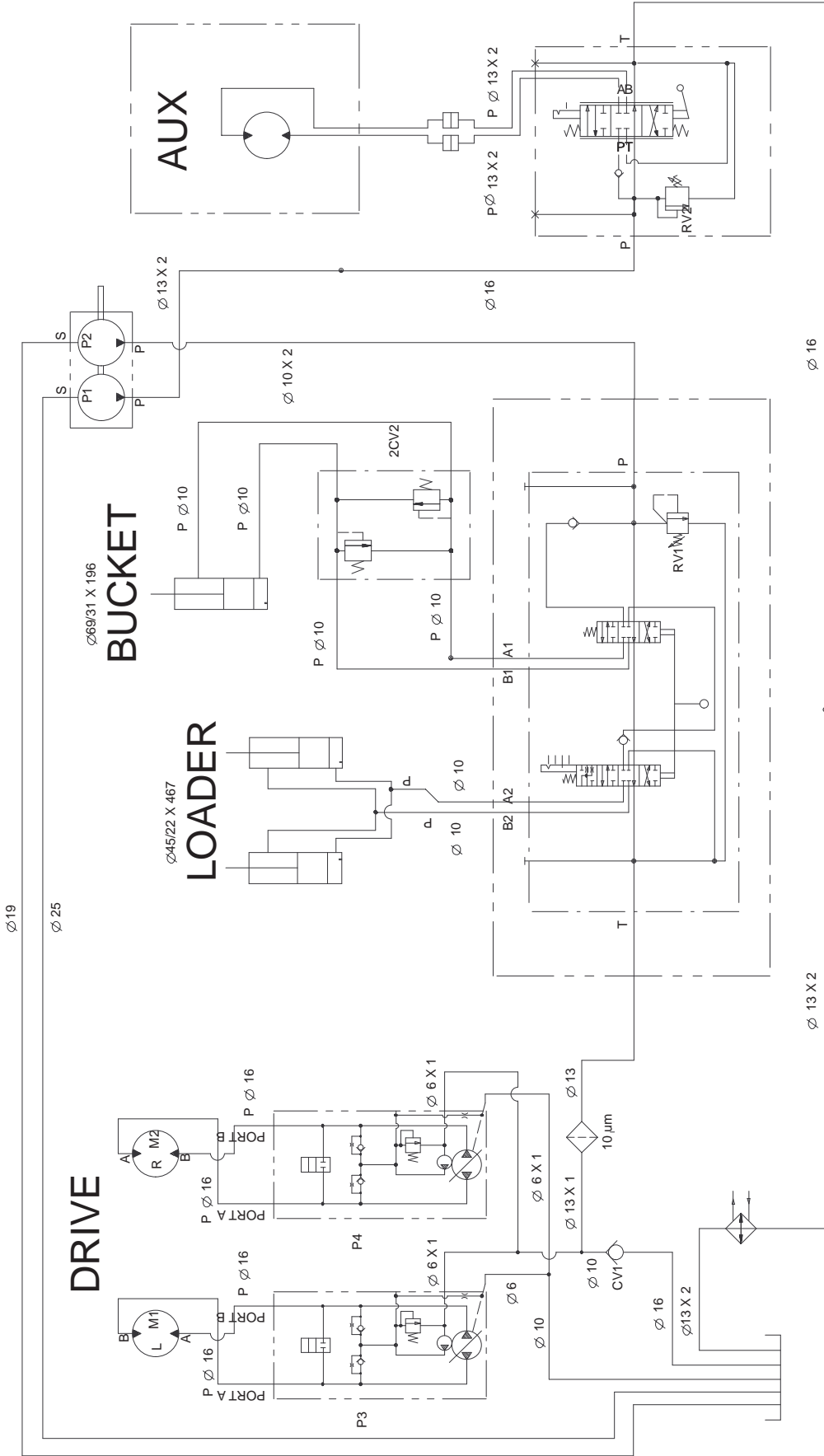




# Electrical Schematic

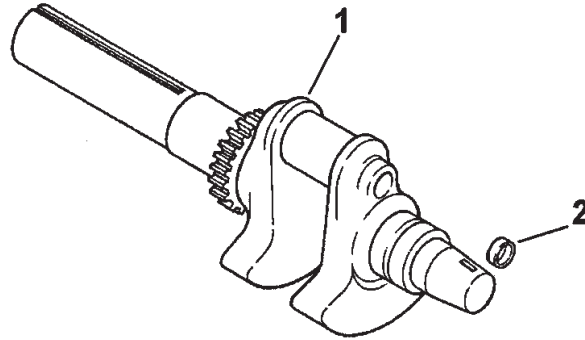


# Hydraulic Schematic



DISPLACEMENT AND PRESSURE CHART			
COMPONENT	DISPLACEMENT	PRESSURE	FLOWRATE*
	CU	BARS	GPM
*P1	0.73 CU IN	11.2	42.4
*P2	0.36 CU IN	5.5	21.0
M1, M2	32.3 CU IN		
**P3, P4	0-1.28 CU IN	166 BARS	17
RV1		3000 PSI	
RV2		207 BARS	
CV1		5 PSI	
2CV2		3000 PSI	207 BARS

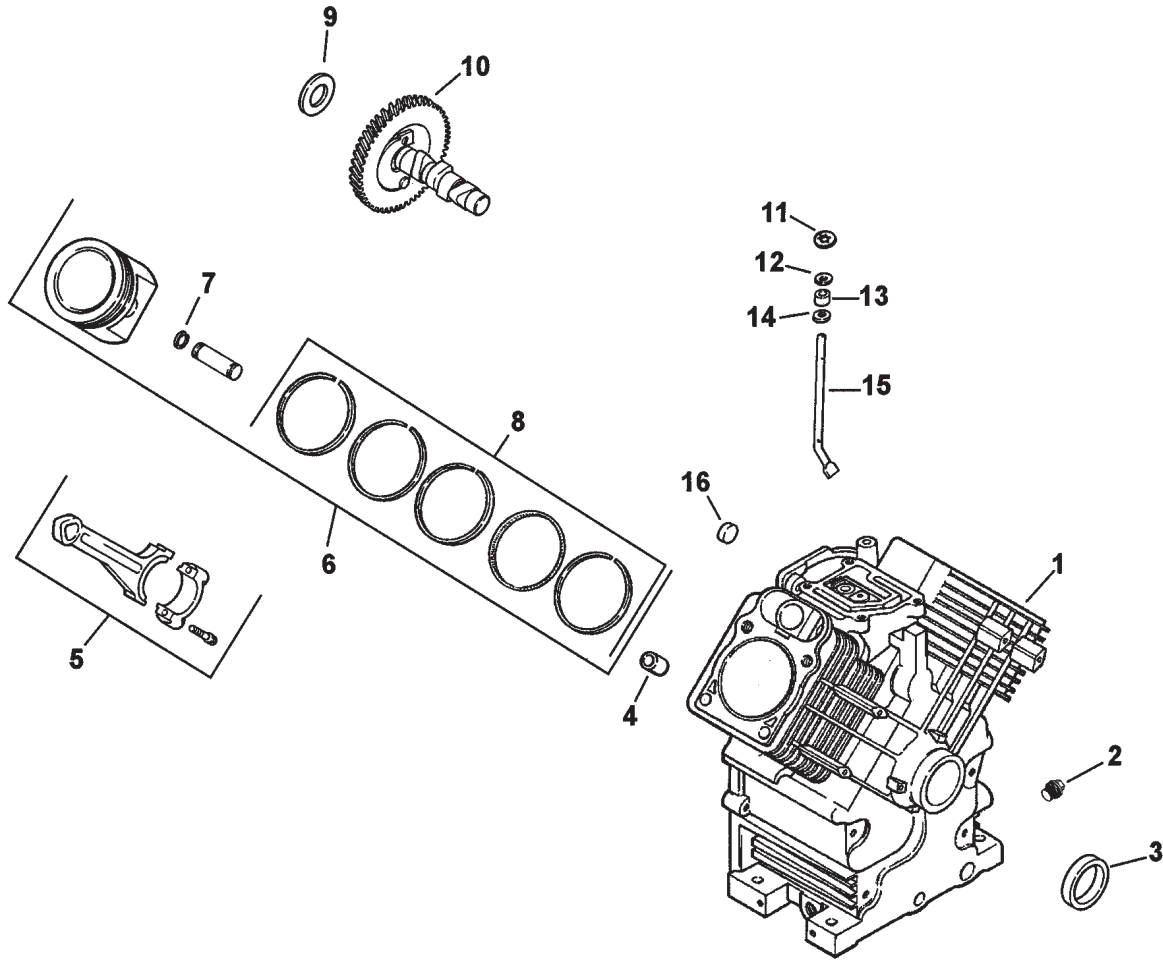
\* FLOWRATE CALCULATED AT 3600 RPM AND 98% EFFICIENCY.  
 \*\* FLOWRATE CALCULATED AT 3100 RPM AND 98% EFFICIENCY.



### Crankshaft Assembly Kohler Engine CH25S PS-68688

Ref. No.	Part No.	Qty.	Description
1	24 014 90-S	1	Crankshaft ASM (Includes 2)
2	52 139 09-S	1	Plug-Cup

Ref. No.	Part No.	Qty.	Description

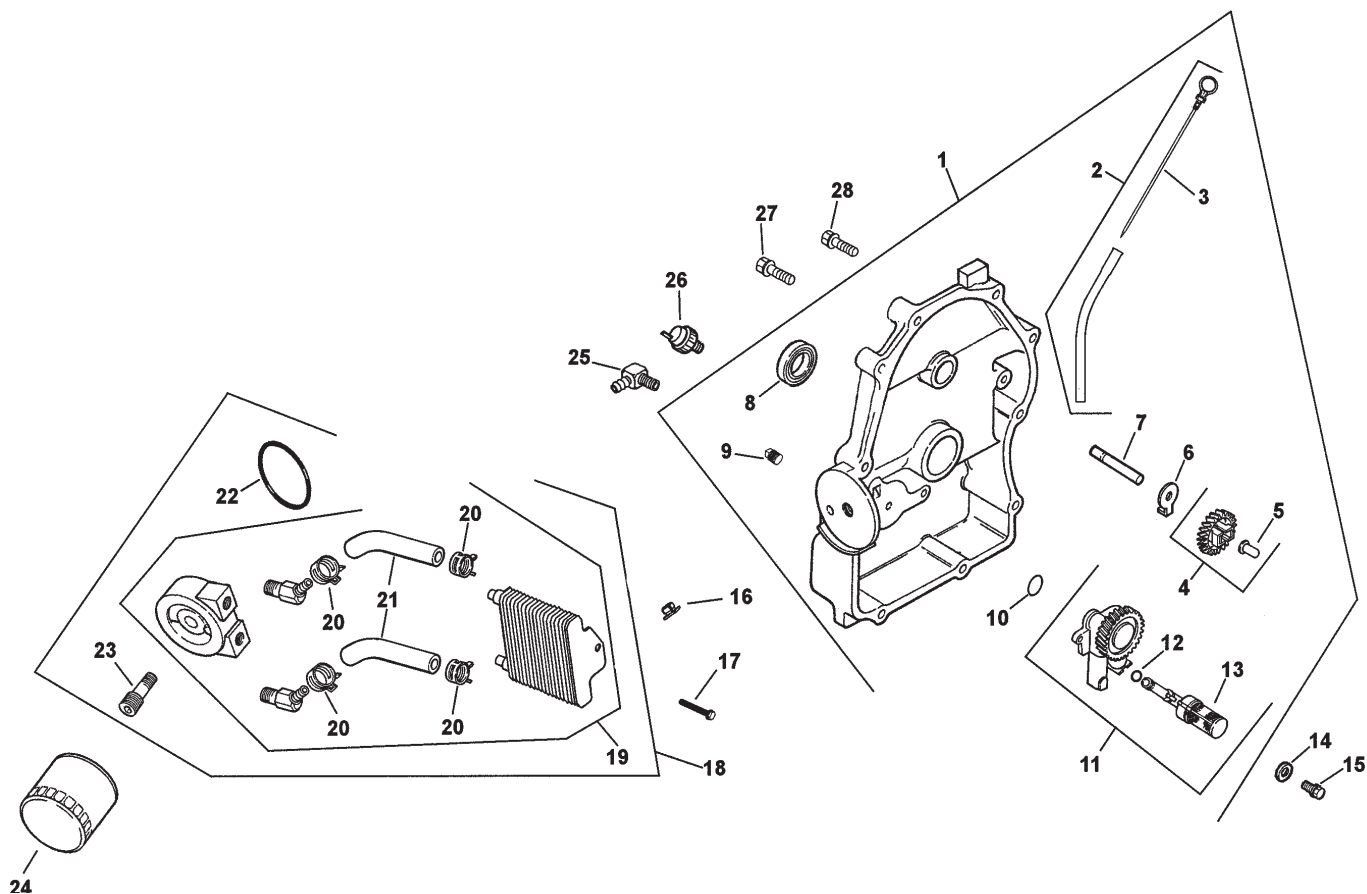


## Crankcase Assembly Kohler Engine CH25S PS-68688

Ref. No.	Part No.	Qty.	Description
1	24 561 138-S	1	Kit-Crankcase (Includes 2, 4, 16, & 24 113 56-S)
2	25 139 57-S	2	Plug
3	24 032 01-S	1	Seal-Oil, Front
4	24 380 13-S	6	Pin-Dowel, Locating
5	24 067 13-S	2	Rod-Connecting (Std.)
	24 067 14-S	2	Rod-Connecting (.25)
6	24 874 06-S	2	Piston w/Ring Set (Std.) (Includes 7, 8)
7	24 018 01-S	4	Retainer-Pin, Piston
8	24 108 04-S	2	Set-Ring (Std.)
9	12 422 09-S	AR	Shim-Camshaft
	12 422 13-S	AR	Shim-Camshaft
	12 422 07-S	AR	Shim-Camshaft
	12 422 08-S	AR	Shim-Camshaft
	12 422 10-S	1	Shim-Camshaft
	12 422 11-S	AR	Shim-Camshaft
	12 422 12-S	AR	Shim-Camshaft
10	24 012 10-S	1	Camshaft
11	24 018 09-S	1	Ring-Retainer
12	M-931010-S	1	Washer-Nylon (top)
13	28 032 09-S	1	Seal-Governor, Cross Shaft

Ref. No.	Part No.	Qty.	Description
14	24 468 15-S	1	Washer (bottom)
15	24 144 33-S	1	Shaft-Cross, Governor
16	52 139 09-S	1	Plug-Cup
*	24 113 56-S	1	Decal

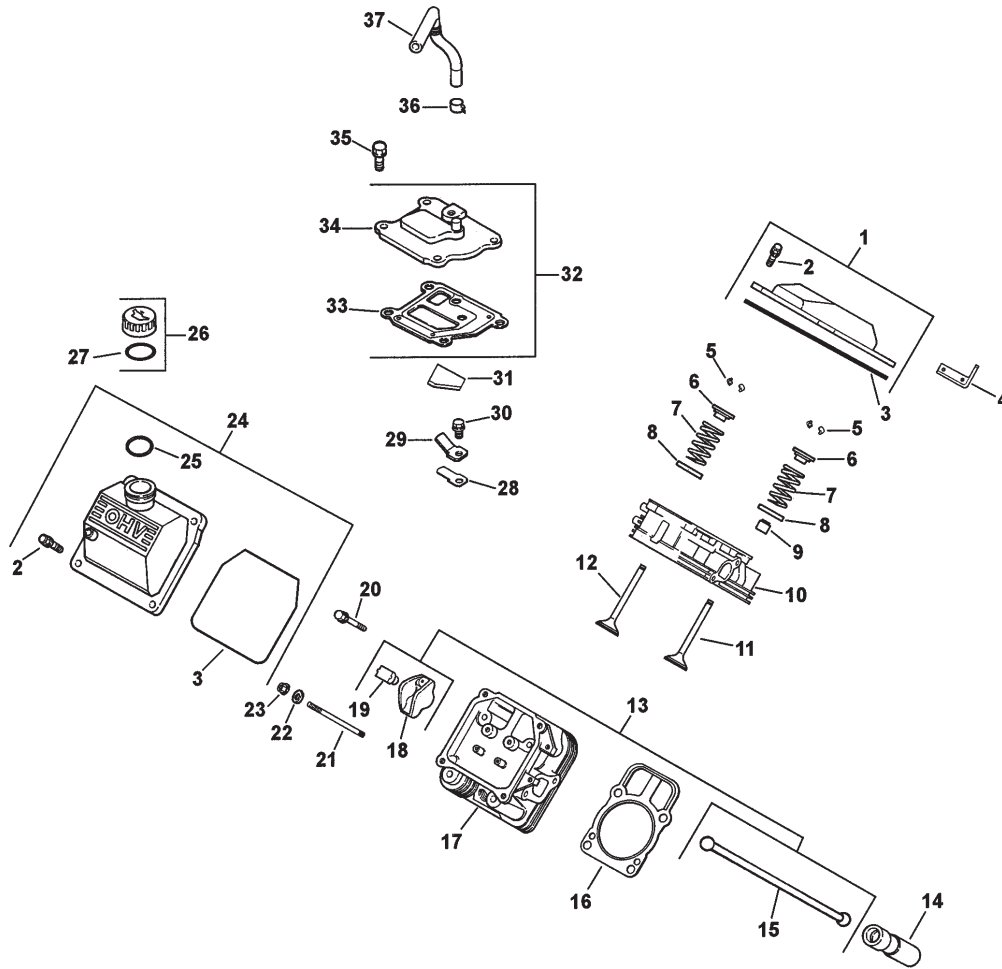
\* Not illustrated



## Oil Pan/Lubrication Assembly Kohler Engine CH25S PS-68688

Ref. No.	Part No.	Qty.	Description	Ref. No.	Part No.	Qty.	Description
1	24 009 92-S	1	Kit-Plate, Closure (Includes 2-13)	18	54 755 21-S	1	Kit-Oil Cooler, Aluminum Base (Includes 19-23)
2	24 755 121-S	1	Kit-Dipstick & Tube (Includes 3)	19	24 594 09-S	1	Cooler-Oil (Includes 20, 21)
3	24 038 10-S	1	Dipstick	20	24 237 10-S	4	Clamp-Hose
4	24 043 12-S	1	Kit-Gear, Governor (w/pin) (Includes 5)	21	24 326 15-S	2	Hose
5	12 380 01-S	1	Pin-Regulating, Governor	22	24 153 13-S	1	O-Ring
6	52 448 02-S	1	Tab-Locking	23	28 136 01-S	1	Nipple-Filter, Oil
7	12 144 02-S	1	Shaft-Gear, Governor	24	52 050 02-S	1	Filter-Oil
8	52 032 08-S	1	Seal-Oil (PTO end)	25	25 155 02-S	1	Connector
9	25 139 60-S	2	Plug-Pipe, Allen Head	26	24 099 03-S	1	Switch-Pressure, Oil
10	24 153 08-S	1	O-Ring	27	24 086 16-S	9	Screw-HF
11	24 393 10-S	1	Oil Pump ASM (Includes 12, 13)	28	24 086 17-S	1	Screw-HF
12	24 153 01-S	1	O-Ring-Pick-up, Oil	*	24 113 25-S	1	Decal-Cooler, Oil
13	24 381 04-S	1	Pick-up, Oil				
14	M-631005-S	2	Washer-Plain				
15	M-645025-S	2	Screw-HF				
16	24 100 01-S	2	Nut-Plastic				
17	24 086 12-S	2	Screw				

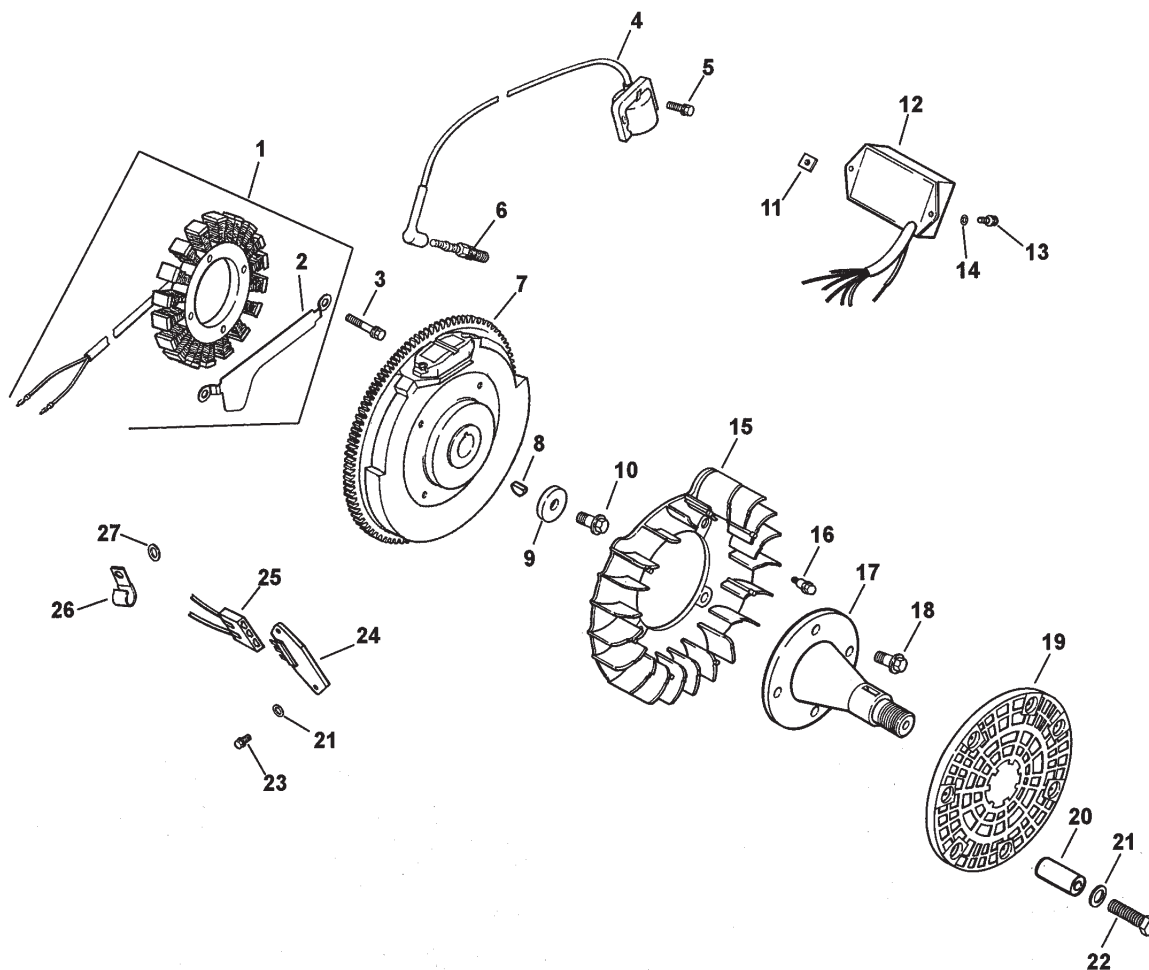
\* Not illustrated



## Head/Valve/Breather Assembly Kohler Engine CH25S PS-68688

Ref. No.	Part No.	Qty.	Description
1	24 755 74-S	1	Kit-Valve Cover, Plain (Includes 2, 3)
2	24 086 32-S	4	Screw-Shoulder
3	24 153 16-S	1	O-Ring
4	24 445 01-S	1	Strap-Lifting
5	12 755 03-S	4	Kit-Retainer
6	12 173 01-S	4	Cap-Spring, Valve
7	24 089 02-S	4	Spring-Valve
8	235011-S	4	RetainerSpring
9	24 032 05-S	2	Seal-Stem, Valve
10	24 318 65-S	1	#1 Cylinder Head ASM
11	24 017 01-S	2	Valve-Intake (Std.)
	24 017 02-S	2	Valve-Intake (.25)
12	24 016 01-S	2	Valve-Exhaust (Std.)
	24 016 02-S	2	Valve-Exhaust (.25)
13	24 755 66-S	1	Kit-Train, Valve (Includes 15, 18, 19)
14	25 351 01-S	4	Lifter-Valve
15	24 411 05-S	4	Rod-Push
16	24 041 37-S	2	Gasket-Head, Cylinder
17	24 318 66-S	1	#2 Cylinder Head ASM
18	25 186 01-S	4	Arm-Rocker
19	24 599 01-S	4	Pivot-Arm, Rocker
20	M-640034-S	4	Screw-HF

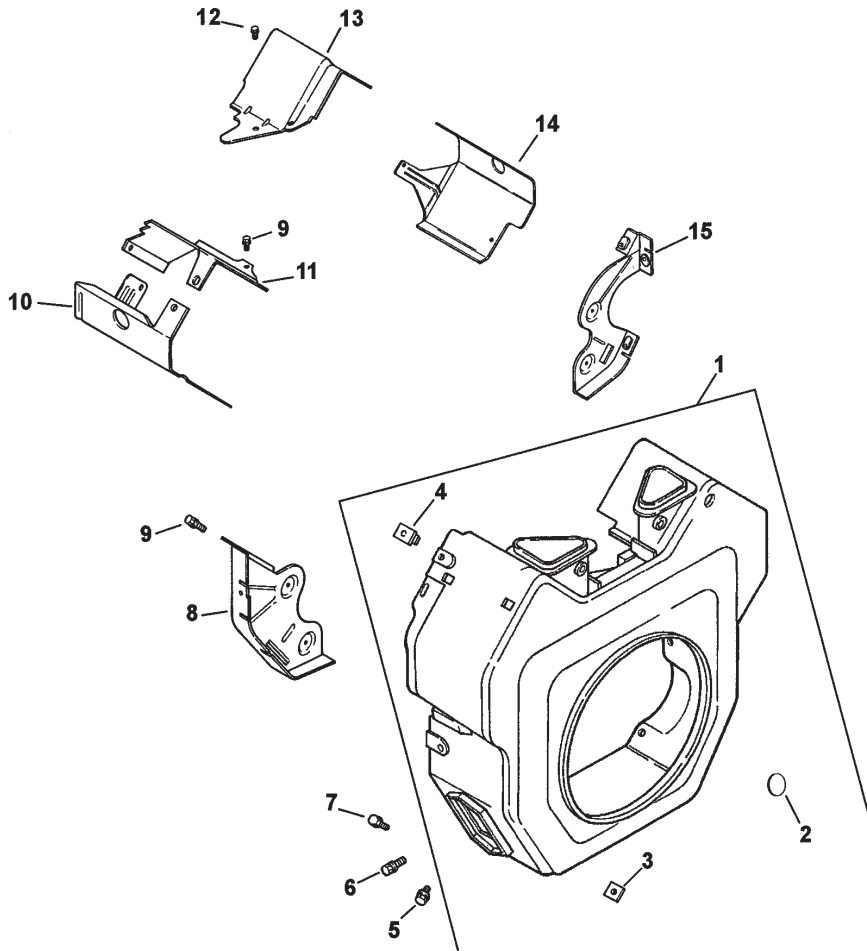
Ref. No.	Part No.	Qty.	Description
21	24 072 09-S	8	Stud
22	24 468 16-S	8	Washer-Flat
23	24 100 10-S	8	Nut-HF
24	24 755 75-S	1	Kit-Valve Cover, Oil Fill (Includes 2, 3, 25)
25	24 153 09-S	1	O-Ring
26	24 755 46-S	1	Kit-Cap, Oil Fill (Includes 27)
27	12 153 03-S	1	O-Ring-Cap, Oil Fill
28	24 402 03-S	1	Reed-Breather
29	12 018 01-S	1	Retainer-Reed, Breather
30	M-545010-S	1	Screw-HF
31	24 050 01-S	1	Filter-Breather
32	24 033 01-S	1	Kit-Breather (Includes 33, 34)
33	24 041 23-S	1	Gasket-Breather
34	24 096 58-S	1	Cover-Breather
35	M-645020-S	4	Screw-HF
36	25 237 14-S	1	Clamp-Breather
37	24 326 26-S	1	Hose-Breather



## Ignition/Electrical Assembly Kohler Engine CH25S PS-68688

Ref. No.	Part No.	Qty.	Description	Ref. No.	Part No.	Qty.	Description
1	54 755 09-S	1	Kit-Stator, 15 Amp (Includes 2)	23	24 086 18-S	2	Screw-Head, Phillips
2	24 126 71-S	1	Bracket-Wire, Stator	24	25 403 03-S	1	Rectifier-Regulator, 15 amp
3	M-548025-S	2	Screw	25	236602-S	1	Connector
4	24 584 15-S	2	Module-Ignition	26	47 154 01-S	1	Clip-Cable
5	M-561025-S	4	Screw-HSH	27	X-25-63-S	1	Washer-Plain
6	12 132 06-S	2	Plug-Spark	*	24 176 42-S	1	Harness-Wiring
7	24 025 14-S	1	Flywheel	*	24 518 12-S	1	Lead-Black (5" - 12 gauge, insulated grip barrel eyelet terminals)
8	X-42-15-S	1	Key				
9	12 468 03-S	1	Washer-Plain				
10	12 086 14-S	1	Screw-HF	*	25 454 03-S	2	Tie
11	24 100 02-S	2	Nut-Plastic	*	25 086 91-S	2	Screw (mounts 5 wire connector of wiring harness to barrel baffle above starter)
12	24 584 09-S	1	Module-Advance, Speed				
13	24 086 41-S	2	Screw-Head, Phillips				
14	X-22-11-S	1	Washer-Lock				
15	24 157 03-S	1	Fan				
16	25 086 47-S	4	Bolt-Shoulder				
17	24 144 13-S	1	Shaft-Drive, Front				
18	M-839025-S	4	Screw-HF				
19	24 162 18-S	1	Screen-Grass				
20	24 112 04-S	4	Spacer				
21	X-25-92-S	6	Washer-Plain				
22	M-403025-S	4	Screw				

\* Not illustrated



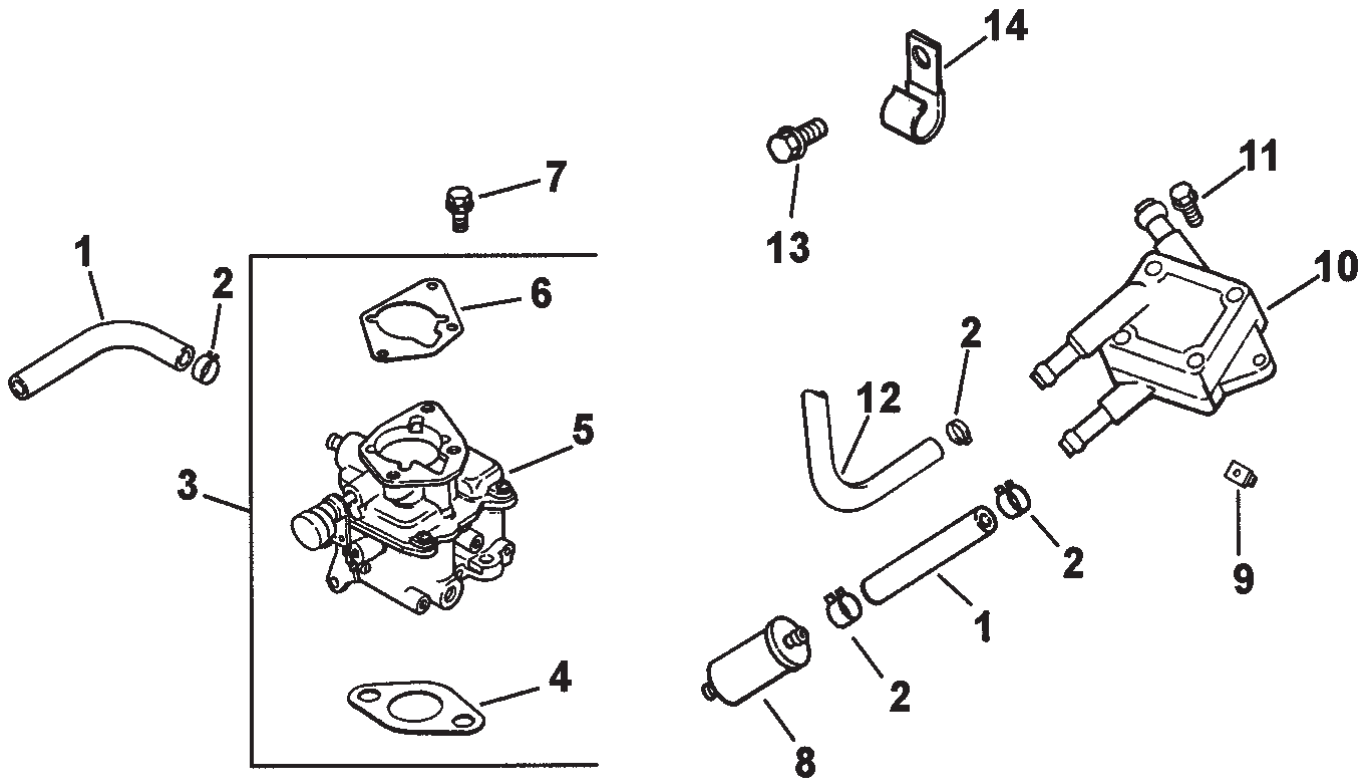
## Blower Housing and Baffles Assembly Kohler Engine CH25S PS-68688

Ref. No.	Part No.	Qty.	Description	Ref. No.	Part No.	Qty.	Description
1	24 027 53-S	1	Blower Housing ASM (Includes 2-4)				
2	25 139 16-S	1	Plug-Button				
3	24 100 01-S	2	Nut-Plastic				
4	24 100 02-S	2	Nut-Plastic				
5	M-551016-S	1	Screw-HF				
6	M-545016-S	2	Screw-HF				
7	M-545020-S	4	Screw-HF				
8	24 146 19-S	1	Plate-Backing, #2 side				
9	M-645016-S	6	Screw-HF				
10	24 063 39-S	1	Baffle-Cylinder Barrel, #2 side				
11	24 063 17-S	1	Baffle-Valley, #2 side				
12	M-545010-S	2	Screw-HF				
13	24 063 24-S	1	Baffle-Valley, #1 side				
14	24 063 58-S	1	Baffle-Cylinder Barrel, #1 side				
15	24 146 20-S	1	Plate-Backing, #1 side				
*	24 113 97-S	1	Decal, HP				

\* Not illustrated





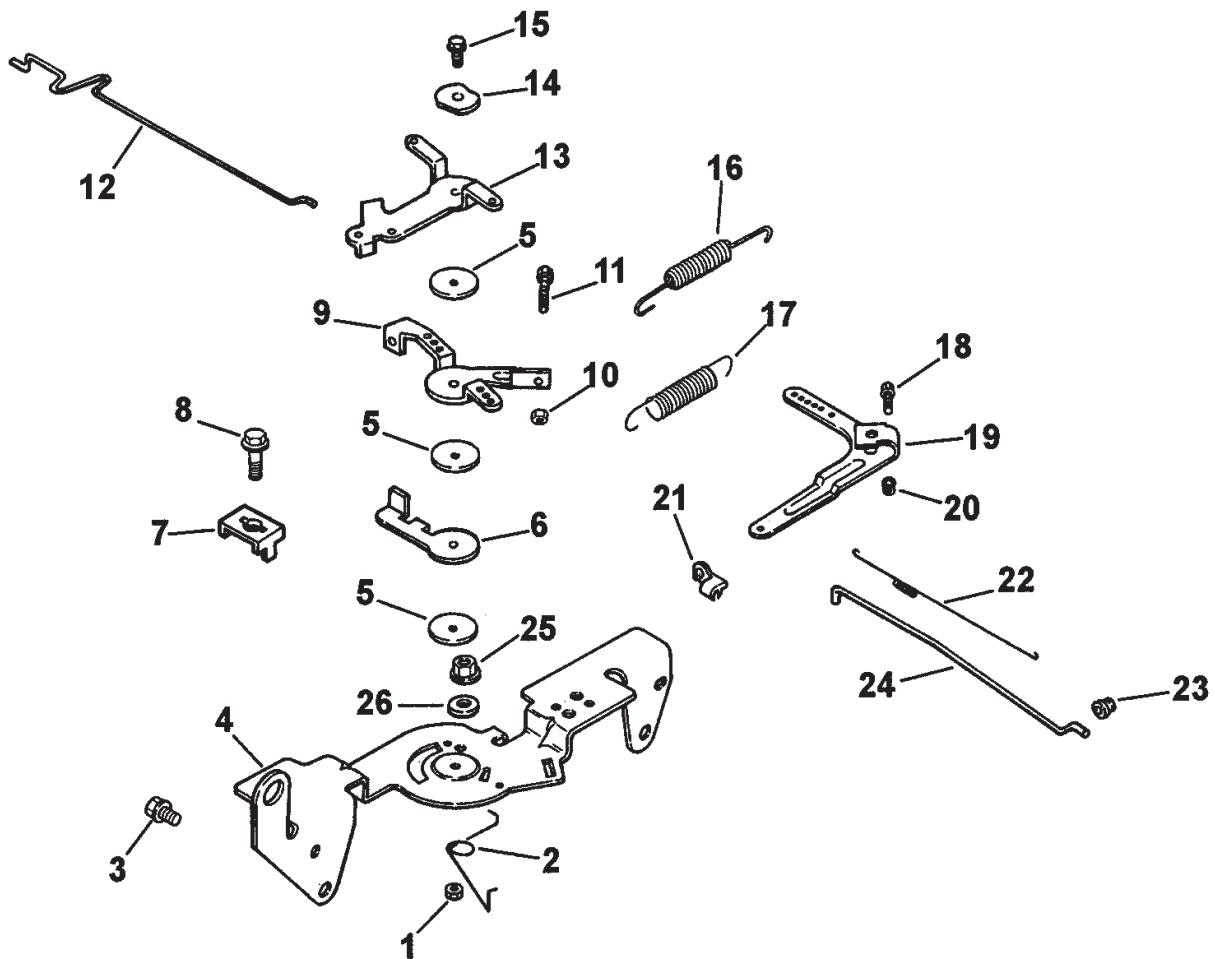


## Fuel System Assembly Kohler Engine CH25S PS-68688

Ref. No.	Part No.	Qty.	Description
1	25 353 32-S	2	Line-Fuel, 9-1/4"
2	25 237 14-S	6	Clamp-Hose
3	24 853 34-S	1	Kit-Carburetor (w/gasket) (Includes 4-6)
4	24 041 06-S	1	Gasket-Cleaner, Air
5	24 053 34	1	Carburetor ASM (For information only, not available separately) (Service with: 24 757 01-S, 24 757 02-S, 24 757 03-S, 24 757 08-S, 24 757 07-S, 24 757 09-S)
6	24 041 17-S	1	Gasket-Carburetor
7	M-651030-S	2	Screw-HF
8	24 050 02-S	1	Filter-Fuel
9	24 100 01-S	2	Nut-Plastic
10	24 393 16-S	1	Pump-Fuel, Pulse
11	24 086 12-S	2	Screw
12	24 353 02-S	1	Line-Fuel, 15-1/2"

Ref. No.	Part No.	Qty.	Description
13	M-650012-S	1	Screw-HF
14	47 154 01-S	1	Clip-Cable
*	24 757 01-S	1	Kit-Solenoid
*	24 757 02-S	1	Kit-Float
*	24 757 03-S	1	Kit-Repair, Carburetor
*	24 757 07-S	1	Kit-Repair, Choke
*	24 757 08-S	1	Kit-Repair, Accelerator Pump Seal & Bushing
*	24 757 09-S	1	Kit-Repair, Accelerator Pump Diaphragm

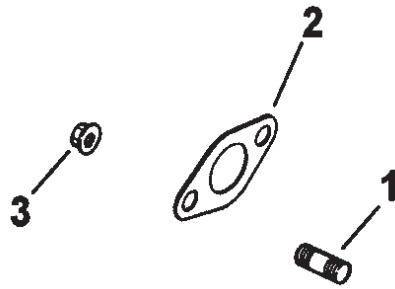
\* Not illustrated



## Engine Controls Assembly Kohler Engine CH25S PS-68688

Ref. No.	Part No.	Qty.	Description	Ref. No.	Part No.	Qty.	Description
1	M-547050-S	1	Nut-Lock, Hex	22	24 089 01-S	1	Spring-Linkage
2	24 089 03-S	1	Spring-Return, Choke	23	25 158 08-S	1	Bushing-Linkage, Throttle
3	M-645016-S	4	Screw-HF	24	24 079 01-S	1	Linkage-Throttle
4	24 126 56-S	1	Bracket-Control	25	M-541050-S	1	Nut-HF
5	24 468 01-S	3	Washer-Plain	26	X-20-1-S	1	Washer-Lock
6	24 090 07-S	1	Lever-Actuator, Throttle				
7	12 237 01-S	2	Clamp-Cable				
8	M-545016-S	3	Screw-HF				
9	24 090 03-S	1	Lever-Control, Throttle				
10	M-446030-S	1	Nut-HF				
11	M-401030-S	1	Screw-HF				
12	24 079 02-S	1	Linkage-Choke				
13	24 090 05-S	1	Lever-Choke				
14	41 468 03-S	1	Washer-Spring				
15	M-545020-S	1	Screw-HF				
16	24 089 51-S	1	Spring-Limiter, Throttle				
17	24 089 44-S	1	Spring-Governor				
18	24 211 03-S	1	Bolt-Square Neck, Round Head				
19	24 090 33-S	1	Lever-Governor				
20	M-641060-S	1	Nut-HF				
21	25 158 11-S	1	Bushing-Retaining, Linkage				





## Exhaust Assembly Kohler Engine CH25S PS-68688

Ref. No.	Part No.	Qty.	Description
1	25 072 04-S	4	Stud
2	24 041 02-S	2	Gasket-Exhaust
3	M-841080-S	4	Nut-HF
*	24 782 20	1	Miniblock
*	24 755 113-S	1	Set-Gasket

Ref. No.	Part No.	Qty.	Description

\* Not illustrated





