



# Work Lights Kit

## Groundsmaster® and Reelmaster® Traction Units with Universal Sunshade

Model No. 140-1554

### Installation Instructions

# Installation

## Loose Parts

Use the chart below to verify that all parts have been shipped.

Procedure	Description	Qty.	Use
<b>1</b>	No parts required	–	Prepare the machine.
<b>2</b>	No parts required	–	Remove the sunshade.
<b>3</b>	No parts required	–	Install the Switch Panel Kit.
<b>4</b>	Light Front bracket Rear bracket Spacer Long carriage screw Short carriage screw Flange nut Carriage bolt Nut Harness Switch Fuse Cable ties	4 2 2 4 4 4 8 4 4 1 1 1 6	Install the lights.
<b>5</b>	No parts required	–	Connect the battery.
<b>6</b>	No parts required	–	Install the sunshade.



# 1

## Preparing the Machine

No Parts Required

### Procedure

1. Move the machine to a level surface.
2. Lower all attachments.
3. Set the parking brake, shut off the engine, and wait for all moving parts to stop before you leave the machine.
4. Remove the key.
5. Ensure that the machine is secure from movement before you begin the installation.
6. Disconnect the negative (–) cable from the battery.

# 2

## Removing the Sunshade

No Parts Required

### Procedure

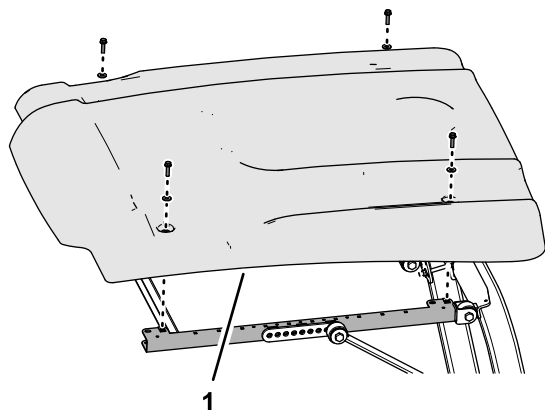


Figure 1

g244329

1. Sunshade

1. Remove the 4 flange-head bolts (5/16 x 1-1/4 inches) and 4 washers (5/16 inch) that secure the sunshade to the side-frame channels (Figure 1 and Figure 2).

**Note:** Do not remove the grommets from the sunshade.

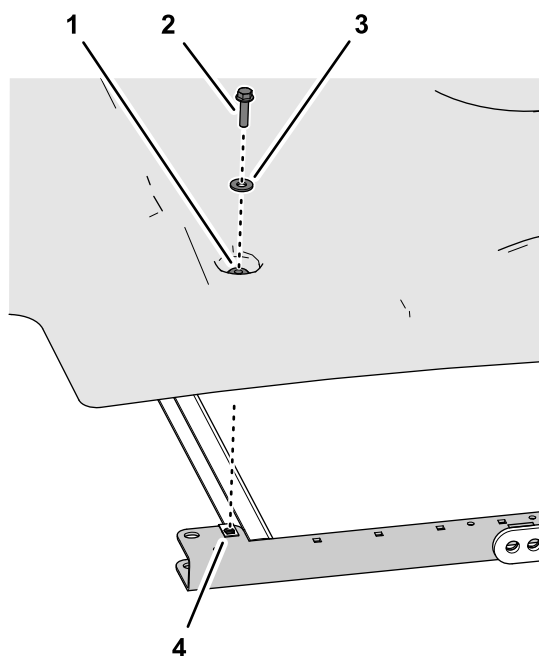


Figure 2

g244328

1. Grommet
2. Flange-head bolt (5/16 x 1-1/4 inches)
3. Washer (5/16 inch)
4. Clip nut (side-frame channel)

2. Remove the sunshade from the machine (Figure 1).

# 3

## Installing the Switch Panel Kit

No Parts Required

### Procedure

The Switch Panel Kit is required; refer to the *Installation Instructions* for the kit.

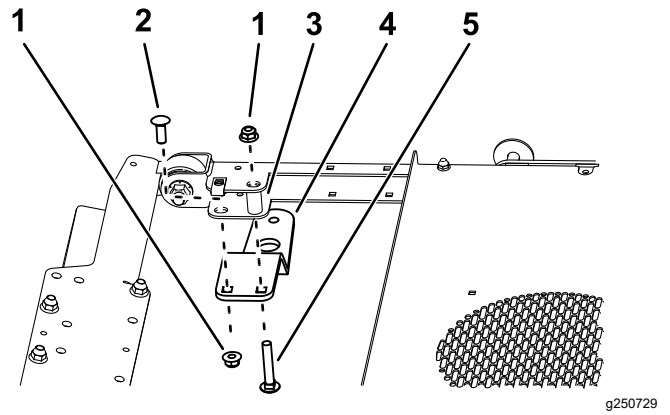


Figure 3

Rear Bracket Shown

- |                        |                       |
|------------------------|-----------------------|
| 1. Flange nuts         | 4. Bracket            |
| 2. Short carriage bolt | 5. Long carriage bolt |
| 3. Spacer              |                       |

# 4

## Installing the Lights

Parts needed for this procedure:

4	Light
2	Front bracket
2	Rear bracket
4	Spacer
4	Long carriage screw
4	Short carriage screw
8	Flange nut
4	Carriage bolt
4	Nut
1	Harness
1	Switch
1	Fuse
6	Cable ties

### Procedure

- Secure each bracket to the sunshade frame with a long carriage bolt, a short carriage bolt, a spacer, and 2 flange nuts (Figure 3 and Figure 5).

If the Beacon Kit is installed, remove and discard the beacon bracket and install the beacon to the light bracket (Figure 4).

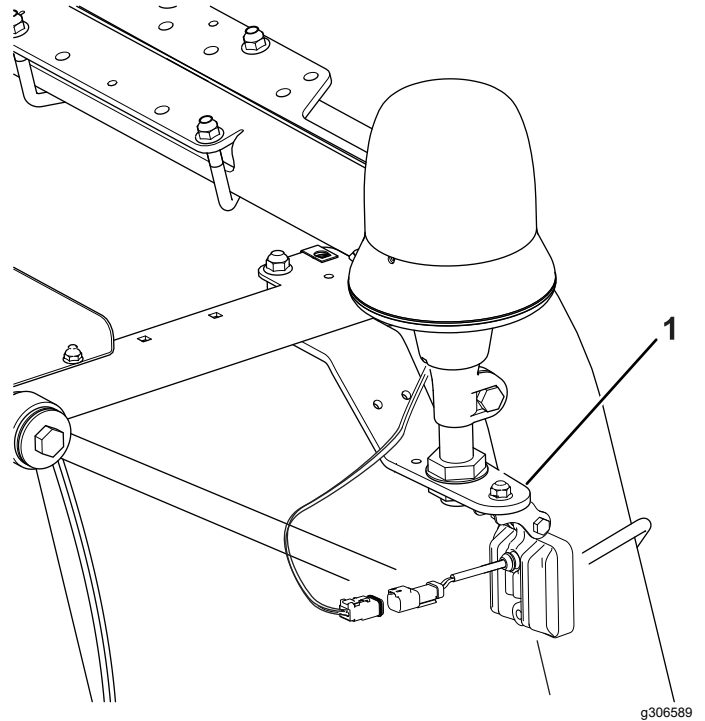
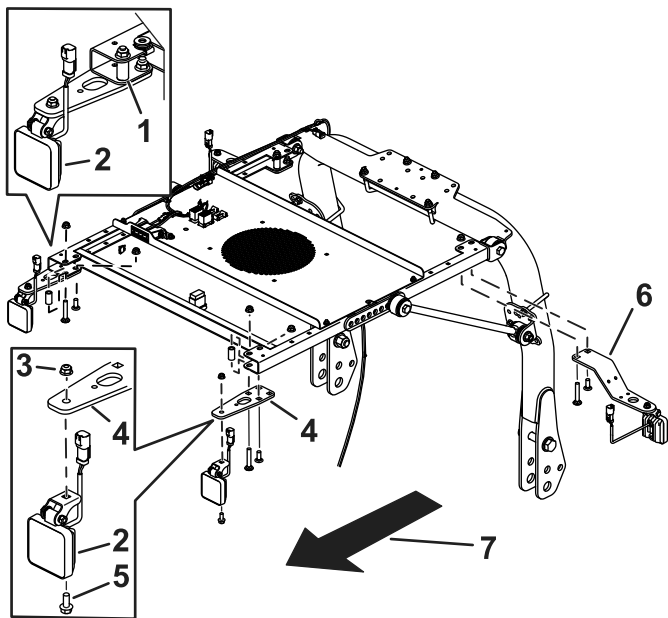


Figure 4

- Light bracket
- Install a light to each bracket with a carriage bolt and a nut (Figure 5).

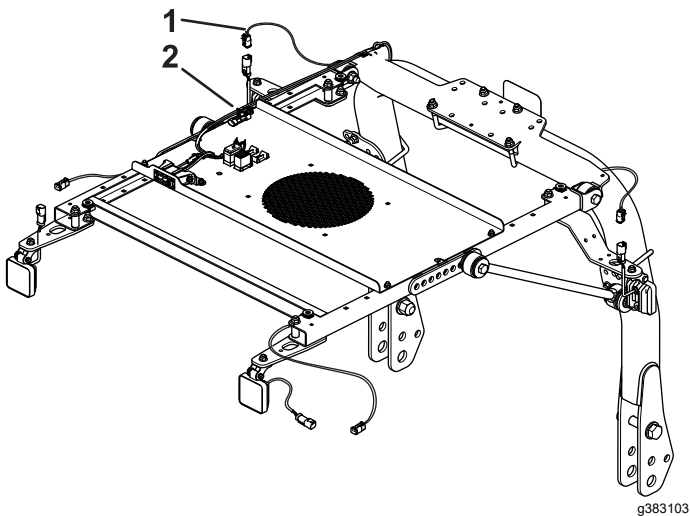


**Figure 5**

g383102

1. Spacer
2. Light
3. Nut
4. Front bracket
5. Bolt
6. Rear bracket
7. Front of the machine

3. Plug the connector on the light-kit harness into the connector on the switch-panel harness (Figure 6).

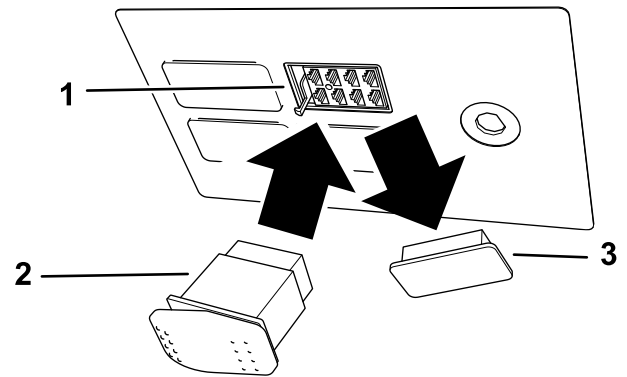


**Figure 6**

g383103

1. Harness
2. Connector

4. Route the harness as shown in (Figure 6), and secure with the cable ties.
5. Remove and discard the plug from the front right space in the switch panel (Figure 7).



**Figure 7**

g250803

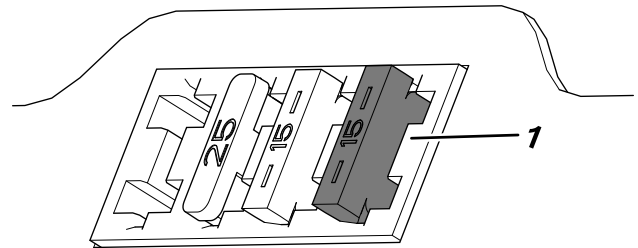
1. Electrical connector
2. Switch
3. Plug

6. Plug the electrical connector into the switch and install the switch into the switch panel (Figure 7).

**Note:** Install the switch so that the thicker, rounded part is toward the rear of the machine.

7. Insert the fuse into the position farthest to the right when looking at the fuse block (Figure 8).

**Note:** The fuse may not need to be installed if a fuse has already been installed from another Toro kit.



**Figure 8**

g250802

1. Fuse

# 5

## Connecting the Battery

No Parts Required

### Procedure

Connect the battery; refer to the electrical system maintenance section of your *Operator's Manual*.

# 6

## Installing the Sunshade

No Parts Required

### Procedure

1. Align the holes in the grommets of the sunshade with the 4 clip nuts of the side-frame channels.
2. Assemble the sunshade to the frame channels ([Figure 2](#)) with the 4 flange-head bolts (5/16 x 1-1/4 inches) and 4 washers (5/16 inch) that you removed earlier.
3. Torque the flange-head bolts to 10 to 14 N·m (90 to 120 in-lb).

## Operation

### Using the Lights

Press the back of the switch to turn on the lights.

Press the front of the switch to turn off the lights.

**Notes:**

**Notes:**



**Count on it.**