



Z253

Z-Master[®] with 62" SFS Side Discharge Mower

Model No. 74225—210002101 and Up

Parts Catalog

Ordering Replacement Parts

To order replacement parts, please supply: the part number, the quantity, and the description of each part desired.

Understanding Reference Numbers

Each identified part in an illustration has a reference number. The reference number for a part also appears in the parts list, along with other information about the part.

This catalog uses two special reference number formats, one to indicate parts in a service assembly and another to indicate the quantity of a given part in an illustration.

Service Assembly Reference Numbers

Parts in service assemblies have reference numbers in the form **a:b**. The **a** represents the reference number of the entire service assembly and the **b** represents a sequential number unique to each part within the service assembly.

For example, a wheel assembly might be identified by reference number **6**, the tire by **6:1**, the valve by **6:2**, and the wheel by **6:3**. When you order the assembly identified by reference number **6**, you receive all parts identified by reference numbers **6:1**, **6:2**, and **6:3**. However, you may also order any part individually.

Reference numbers of this type appear in illustrations and in part lists.

Reference Numbers Indicating Quantity

In an illustration, if a reference number indicates more than one part, the reference number has the form **nX y**. The **n** represents the quantity of the part, the **X** is the multiplication symbol, and the **y** represents the reference number.

For example, in an illustration, the reference number **2X 37** means that two of the parts identified by reference number **37** are indicated.

Contents

Description	Page	Description	Page
Front Frame Assembly	3	Crankcase Assembly – Group 2	
Caster and Wheel Assembly	4	Kohler CH23S–76550	22
Rear Frame and Wheel Assembly	5	Oil Pan/Lubrication Assembly – Group 3	
Brake and Wheel Hub Assembly	6	Kohler CH23S–76550	23
Control Panel Assembly	7	Head/Valve/Breather Assembly – Group 4	
Hydraulic System Assembly	8	Kohler CH23S–76550	24
Hydraulic System Assembly (Continued)	9	Ignition/Electrical Assembly – Group 5	
Tank and Fuel Line Assembly	10	Kohler CH23S–76550	25
Shield and Clutch Assembly	11	Blower Housing and Baffle Assembly – Group 6	
Shield and Clutch Assembly (Continued)	12	Kohler CH23S–76550	26
Idler Assembly	13	Starting System Assembly – Group 7	
Electrical System Assembly	14	Kohler CH23S–76550	27
Frame and Deck Assembly	15	Fuel System Assembly – Group 8	
Deck, Deflector and Roller Assembly	16	Kohler CH23S–76550	28
Spindle and Pulley Assembly	17	Engine Control Assembly – Group 9	
Belt and Idler Arm Assembly	18	Kohler CH23S–76550	29
Stand Assembly	19	Air Intake/Filtration Assembly – Group 10	
Electrical Schematic	20	Kohler CH23S–76550	30
Crankshaft Assembly – Group 1		Exhaust Assembly – Group 11	
Kohler CH23S–76550	21	Kohler CH23S–76550	31

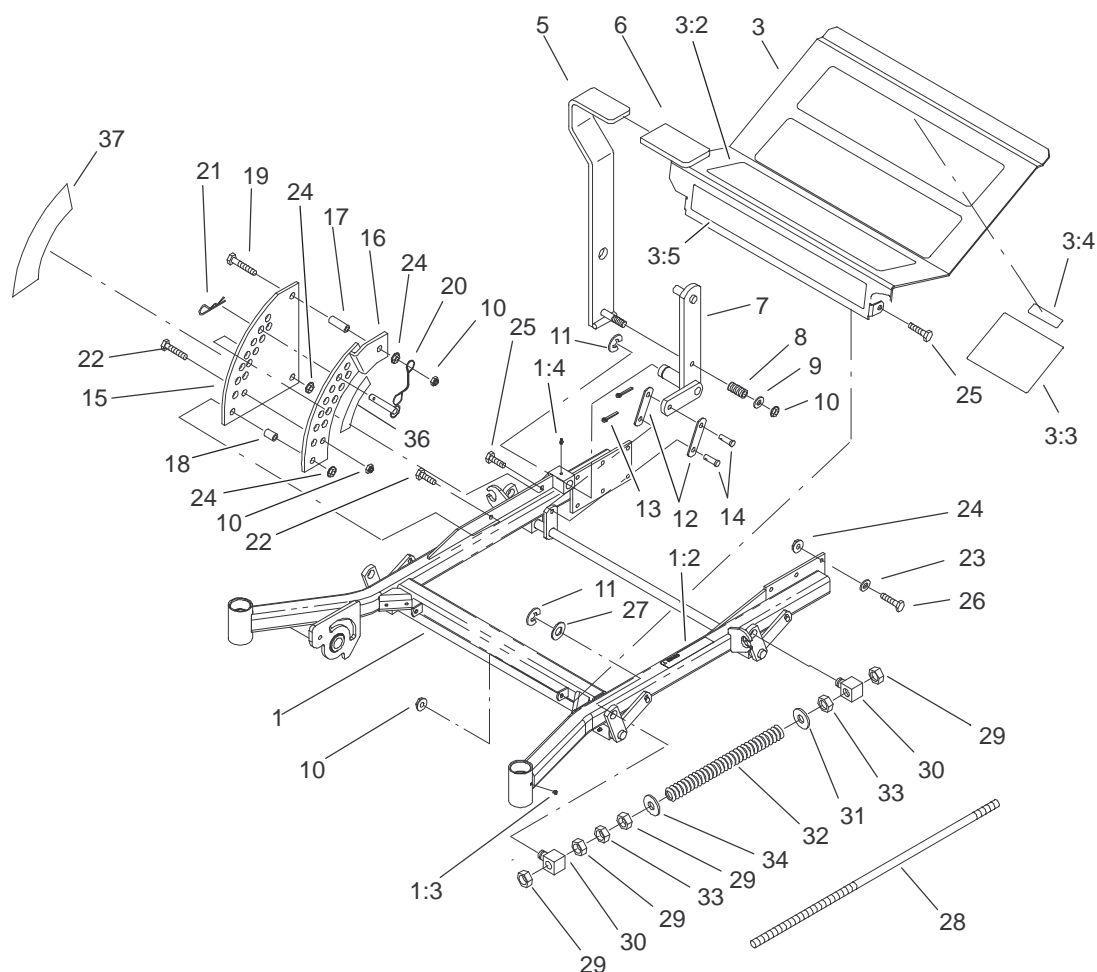
Accessories

Description	Model / Part No.	Description	Model / Part No.
High Suspension Seat	74210	Atomic Blade Assembly	104–1303
Foot Lift Assist	78473	Z Recycler Kit (62in)	100–9600
Roll Over Protection System Kit	78480	Spark Arrester Kit	105–1672
Stripping Kit	30163	Air Filter Kit	99–4663
Hitch Kit	99–8925	Filter Minder	99–4664

Part Description Abbreviations

Part descriptions in this catalog may include the following abbreviations.

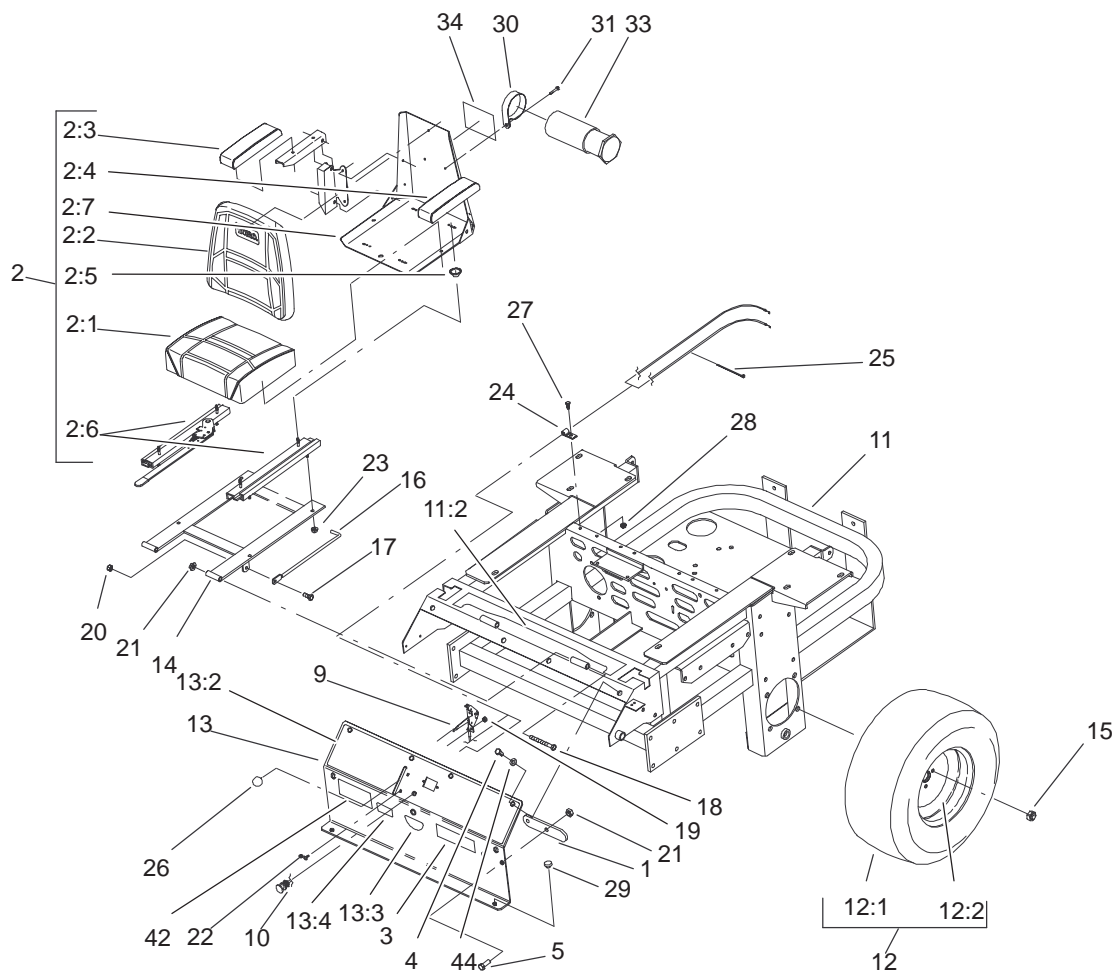
Abbreviation	Meaning	Abbreviation	Meaning
AR	as required	HWHTF	hex washer head thread forming
ASM	assembly	INC	incorporated
CARR	carriage	LH	left hand
DEG	degrees	NI	nylon insert
FH	flat head	PPH	Phillips pan head
GA	gauge	PTH	Phillips truss head
HF	hex flange	PTO	power take off
HH	hex head	RH	right hand
HHF	hex head flange	SFH	slotted fillister head
HLH	hex lag head	SHH	slotted hex head
HJ	hex jam	SQH	square head
HOC	height-of-cut	SHWH	slotted hex washer head
HS	hex socket	SPH	slotted pan head
HSBH	hex socket button head	SRH	slotted round head
HSFH	hex socket flat head	STD	standard
HSH	hex socket head	TAP	self tapping
HWH	hex washer head	TTH	Torx truss head



Sheet No.:2

Front Frame Assembly

Ref. No.	Part No.	Qty.	Description	Ref. No.	Part No.	Qty.	Description
1	104-5132	1	Frame ASM	22	323-9	2	Screw-HH
1:2	1-633818	1	Decal-Warning	23	98-5975	12	Washer-Belleville
1:3	1-811010	2	Plug	24	3290-357	15	Nut-Flange, Lock
1:4	302-19	5	Fitting-Grease	25	323-6	3	Screw-HH
3	100-6509	1	Floorpan ASM	26	323-7	12	Screw-HH
3:2	1-633553	3	Pad-Antiskid	27	3256-29	4	Washer-Flat
3:3	1-633766	1	Decal-Check	28	1-633096	2	Rod-Lift, Deck
3:4	98-5954	1	Decal-Missing, Cover	29	3217-11	8	Nut-Hex
3:5	1-633737	1	Decal-Z-Master	30	1-633441	4	Swivel-Deck Mount, Rear
5	1-632324-03	1	Lever-Lift	31	3256-7	2	Washer-Flat
6	1-633295	1	Grip-Lever, Lift	32	1-633064	2	Spring-Support, Deck
7	1-632219-03	1	Arm-Lift, Deck	33	3218-6	4	Nut-Jam
8	1-633325	1	Spring-Compression	34	3256-7	2	Washer-Flat
9	3256-24	1	Washer-Flat	36	1-633706	1	Decal-Height, Deck
10	3296-39	5	Nut-Lock, NI	37	1-633345	1	Decal-Height, Deck
11	32151-103	5	Ring-Snap				
12	1-633068	2	Arm-Lift, Deck				
13	3272-10	2	Pin-Cotter				
14	283-2	2	Pin-Clevis				
15	1-633889-01	1	Plate-Lift, Deck				
16	1-632899-01	1	Plate-Lift, Deck				
17	1-633082	1	Bushing-Lever, Lift				
18	1-633080	1	Bushing-Lever, Lift				
19	323-13	1	Screw-HH				
20	1-633097	1	Pin-Hitch w/Lanyard				
21	1-806005	1	Pin-Hair				

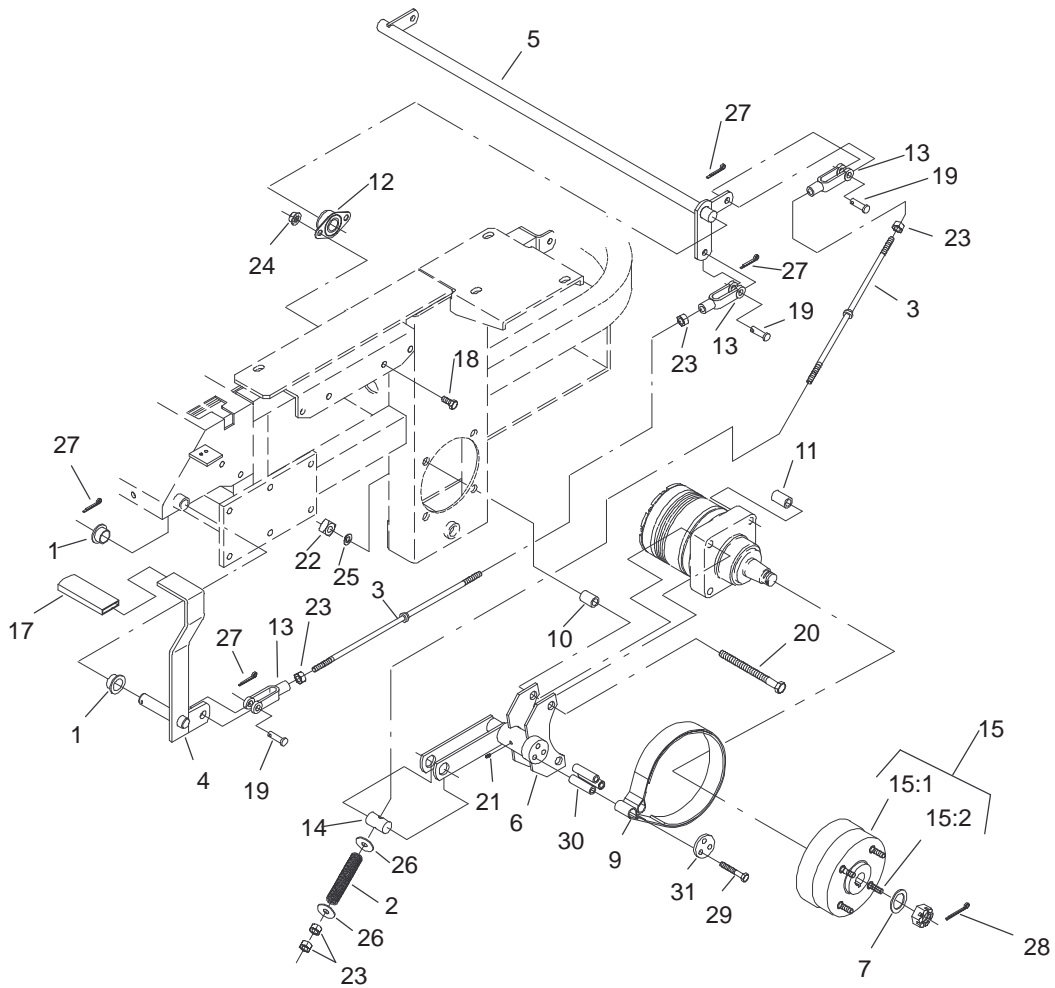


Sheet No.:4

Rear Frame and Wheel Assembly

Ref. No.	Part No.	Qty.	Description
1	1-633964-03	1	Stop-Brake, Park
2	1-633705	1	Seat w/Tracks
2:1	103-0290	1	Cushion-Bottom, Seat
2:2	104-7754	1	Cushion - Back, Seat
2:3	1-633710	1	Cushion-Armrest, RH
2:4	1-633711	1	Cushion-Armrest, LH
2:5	1-543401	4	Spacer-Track
2:6	1-643255	1	Track-Seat, 4"
2:7	1-633859	1	Frame-Seat
4	322-3	6	Screw-HH
5	323-6	2	Screw-HH
9	1-633696	1	Cable-Throttle
10	1-603336	1	Control-Choke
11	100-4261	1	Rear Frame ASM
11:2	103-0245	1	Decal-Console, Top
12	1-633970	2	Wheel & Tire ASM
12:1	1-633993	1	Tire
12:2	1-633992	1	Wheel
13	99-4623	1	Console ASM
13:2	100-4311	1	Decal-Panel, Control
13:3	103-0262	1	Decal-Valve, Fuel
13:4	98-4387	1	Decal-Protection, Ear
14	1-632187-03	1	Frame - Seat
15	242-50	8	Nut - Lug
16	1-633293	1	Rod-Holdup, Seat
17	322-5	1	Screw-HH

Ref. No.	Part No.	Qty.	Description
18	323-21	2	Screw-HH
19	3296-2	2	Nut-Lock
20	3296-29	1	Nut-Lock
21	3296-39	4	Nut-Lock, NI
22	1-807513	2	Bolt-CARR
23	32128-20	4	Nut-HF
24	1-513762	1	Clip-Loom
25	1-303335	1	Tie-Plastic
26	1-513592	1	Knob-Ball, Red
27	321-4	1	Screw-HH
28	32128-33	1	Nut-HF
29	1-513658	2	Bumper-Catcher, Grass
30	2412-120	2	R-Clamp
31	32104-76	2	Screw
33	74-0720	1	Tube-Manual
34	99-4693	1	Decal-Toro
42	99-4628	1	Decal-Z253
44	3256-23	6	Washer-Flat

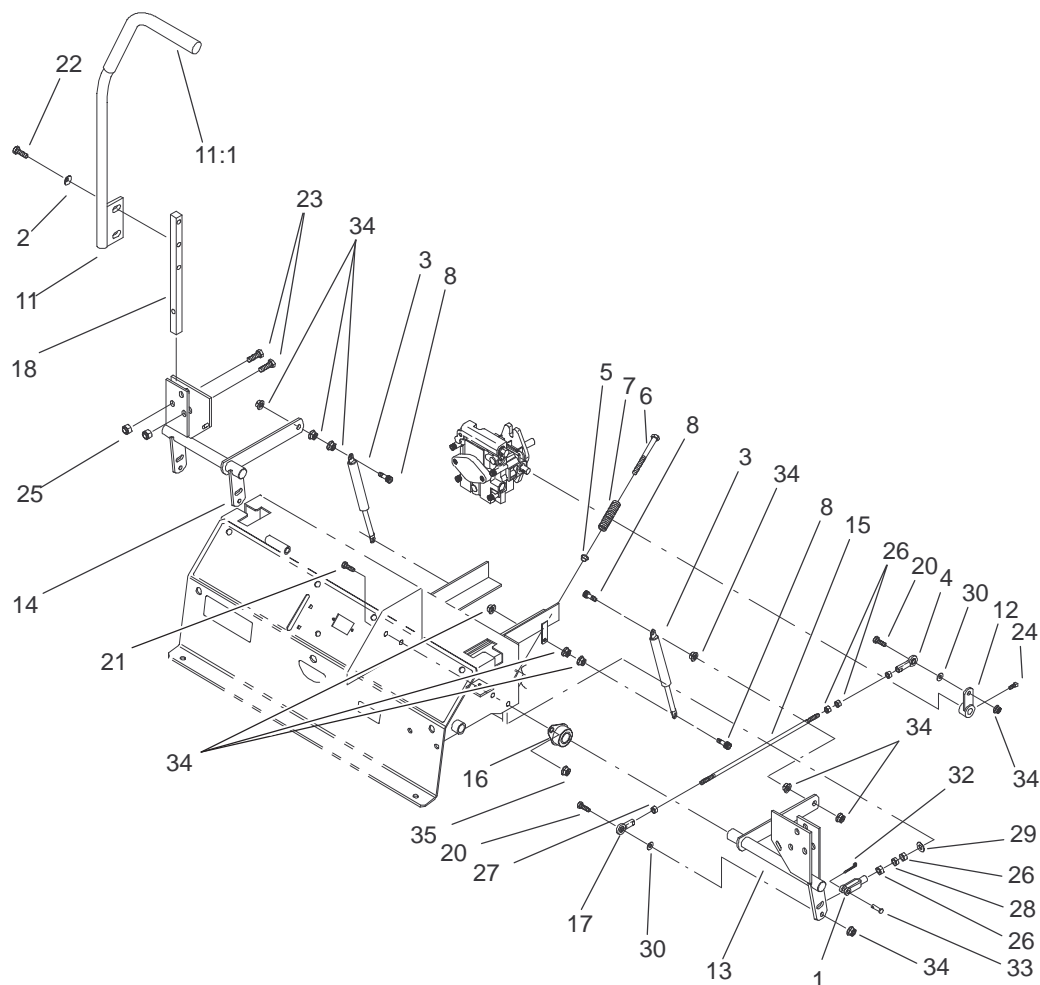


Sheet No.:5

Brake and Wheel Hub Assembly

Ref. No.	Part No.	Qty.	Description
1	1-513140	2	Bearing-Control
2	1-633454	2	Spring-Brake
3	1-633477	3	Rod-Brake
4	1-634500	1	Brake Lever/Grip ASM
5	1-632217-03	1	Shaft-Brake
6	103-0352-03	2	Bracket-Brake
7	1-523157	2	Washer-Spacer
9	103-0355	2	Band-Brake
10	1-633380	4	Spacer-Wheel, Short
11	1-633382	4	Spacer-Wheel, Long
12	1-633102	2	Bearing-Flange, Side
13	1-633131	4	Yoke-Linkage, Brake
14	1-633144	2	Pin-Trunion
15	103-0590	2	Hub-Wheel w/Studs
15:1	103-0589	1	Hub-Wheel
15:2	1-633926	4	Stud-Heel
17	1-633268	1	Grip-Lever, Brake
18	323-4	4	Screw-HH
19	1-808285	4	Pin-Clevis
20	325-17	8	Screw-HH
21	1481	2	Fitting-Grease
22	103-0131	8	Nut-Square
23	3219-3	8	Nut-HH
24	3290-357	4	Nut-Flange, Lock
25	3253-7	8	Washer-Lock
26	3256-4	4	Washer-Flat

Ref. No.	Part No.	Qty.	Description
27	3272-10	7	Pin-Cotter
28	1-806800	2	Pin-Cotter
29	322-9	6	Screw-HH
30	103-0384	6	Spacer
31	103-0374	2	Retainer-Band, Brake



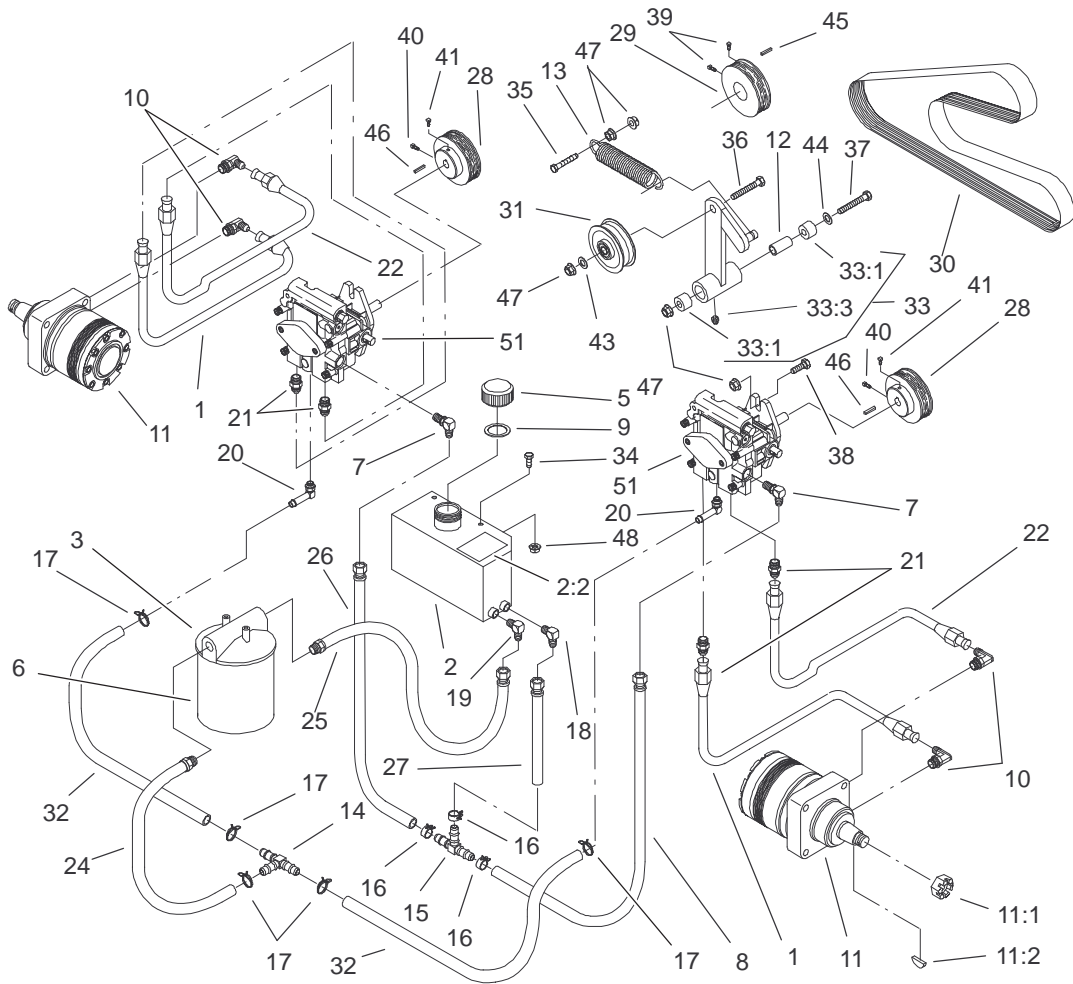
Sheet No.:6

Control Panel Assembly

Ref. No.	Part No.	Qty.	Description
1	1-303105	2	Yoke-Adjustable
2	98-5975	4	Washer-Belleville
3	1-523027	2	Damper-Control
4	1-543017	2	Balljoint-RH
5	1-603735	2	Bushing-Flanged, Nylon
6	1-603737	2	Bolt-Return, Neutral
7	1-603807	2	Spring-Return, Neutral
8	1-403180	4	Screw-HH
11	103-0632	1	RH Lever/Grip ASM
11:1	1-633257	1	Grip-Control, Motion
12	1-632208-03	2	Arm-Control, Pump
13	1-642319	1	Control-Motion, LH
14	1-642320	1	Control-Motion, RH
15	1-633153	2	Linkage-Pump/Lever
16	1-633102	4	Bearing-Flange, Side
17	1-633152	2	Balljoint-Thread, LH
18	103-0407	2	Arm-Shaft, Control
20	322-6	4	Screw-HH
21	323-4	8	Screw-HH
22	323-6	4	Screw-HH
23	323-9	6	Screw-HH
24	1-803022	2	Screw
25	3296-39	6	Nut-Lock, NI
26	3219-2	10	Nut-Hex

Ref. No.	Part No.	Qty.	Description
27	3220-20	2	Nut-Jam
28	3220-2	2	Nut
29	3256-2	2	Washer-Flat
30	3256-3	4	Washer-Flat
32	3272-5	2	Pin-Cotter
33	1-808280	2	Pin-Clevis
34	32128-20	16	Nut-HF
35	3290-357	8	Nut-Flange, Lock
*37	103-0631	1	LH Lever/Grip ASM

* Not illustrated



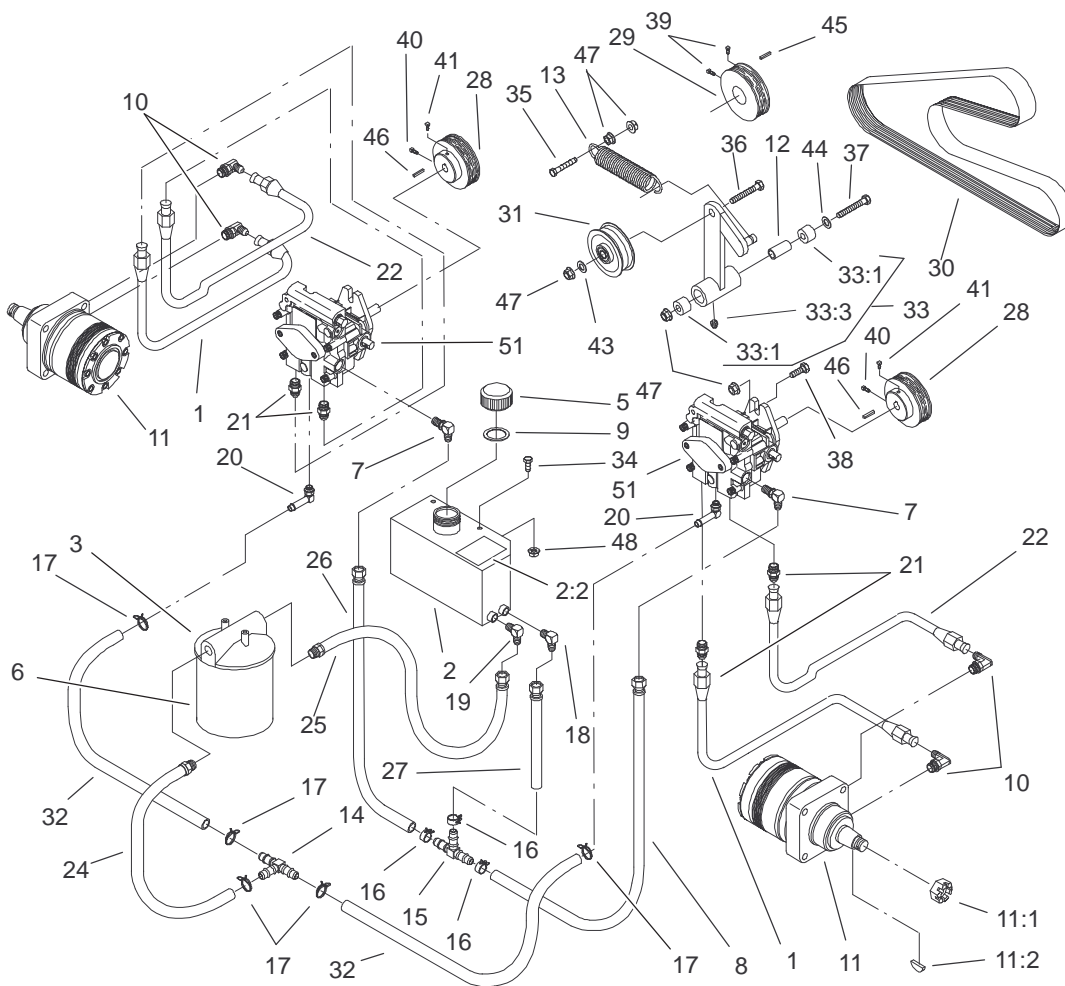
Sheet No.:7

Hydraulic System Assembly

Ref. No.	Part No.	Qty.	Description
1	1-633774	2	Hose-Upper
2	99-4625	1	Hydraulic Tank ASM
2:2	1-523552	1	Decal-Tank, Hydraulic
3	1-513006	1	Filter-Head
5	1-513167	1	Cap-Reservoir, Hydraulic
6	1-633750	1	Filter-Hydraulic
6	1-633752	1	Filter-Winter, Hydraulic
7	1-513840	2	Fitting-90°
8	1-522217	1	Low Pressure Hose ASM
9	1-523103	1	Gasket-Cap, Tank
10	1-633786	4	Fitting-90°
11	1-523328	2	Motor-Wheel
11:1	1-809036	1	Nut-HH
11:2	1-807020	1	Key-Woodruff
*11:99	1-000099	1	Kit-Seal
*11:99	1-000139	1	Kit-Bearing
12	1-603384	1	Bushing-Pivot, Idler
13	1-603413	1	Spring-Extension
14	1-603721	1	Fitting-Tee, Hose
15	1-603722	1	Fitting-Tee, Hose
16	1-603826	3	Clamp-Hose
17	1-603827	5	Clamp-Hose
18	1-603987	1	Fitting-Elbow

Ref. No.	Part No.	Qty.	Description
19	1-603988	1	Fitting-Elbow
20	1-603989	2	Fitting-Elbow
21	1-603990	4	Fitting-Straight
22	1-633775	2	Hose-Lower
24	1-632281	1	Hose ASM
25	1-632282	1	Hose ASM
26	1-632285	1	Hose ASM
27	1-632286	1	Hose ASM
28	1-633568	2	Sheave
29	1-633567	1	Sheave
30	1-633749	1	Belt-Drive, Pump
31	1-633167	1	Sheave-Idler
32	1-633335	2	Hose-Pressure, Low
33	1-634277	1	Bearing Arm ASM
33:1	1-513034	2	Sleeve-Bearing
33:3	302-40	1	Fitting-Grease
34	321-4	2	Screw-HH
35	323-8	1	Screw-HH
36	323-9	1	Screw-HH
37	1-800805	1	Screw-HH
38	323-7	4	Screw-HH
39	1-803022	2	Screw
40	3242-6	2	Screw-Set, SQH
41	3242-4	2	Screw-Set, SQH
43	3256-3	1	Washer-Flat
44	3256-4	1	Washer-Flat

* Not illustrated



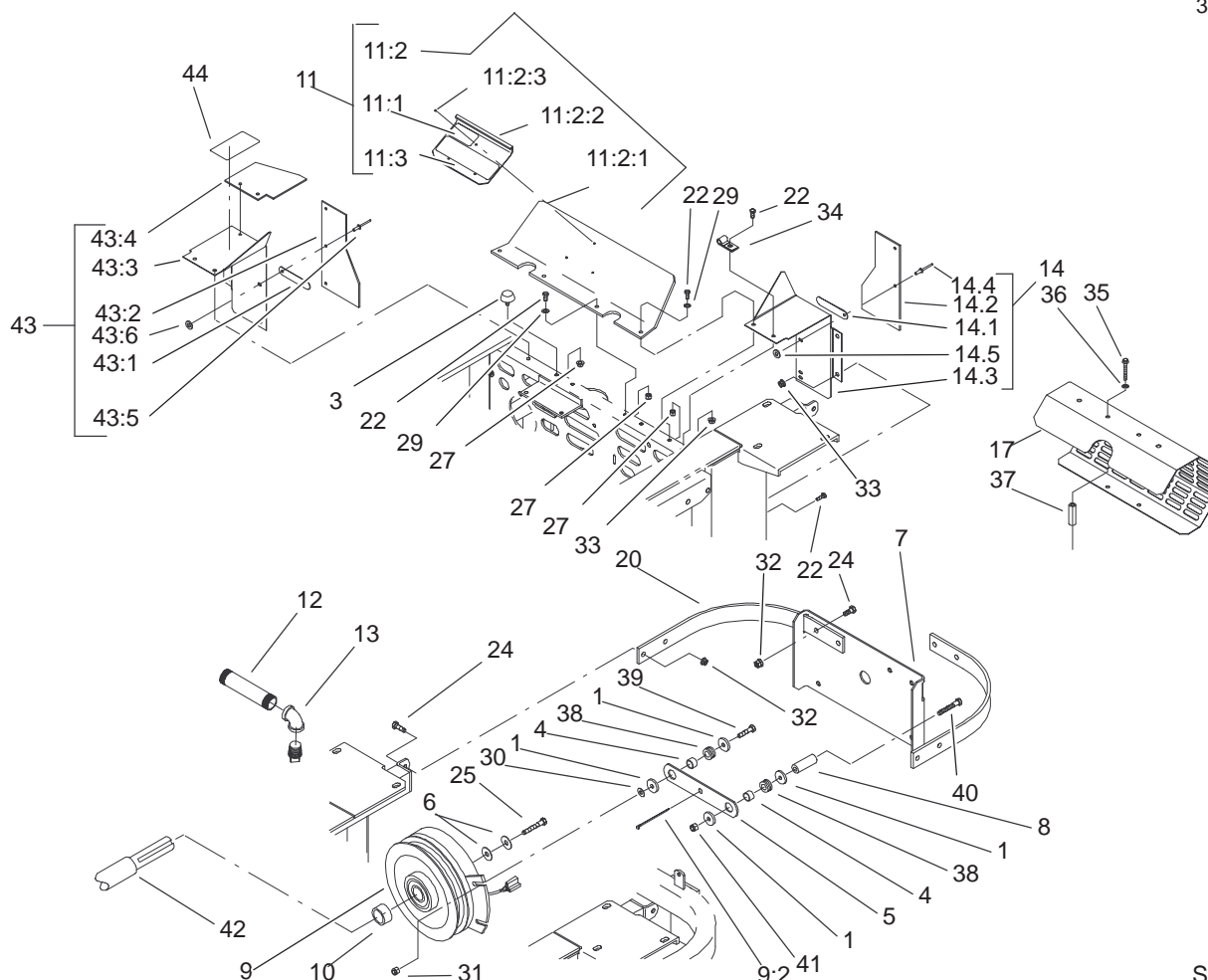
Sheet No.:7

Hydraulic System Assembly (Continued)

Ref. No.	Part No.	Qty.	Description
45	13-2840	1	Key-Square
46	1-807272	2	Key-Machine
47	3290-357	8	Nut-Flange, Lock
48	32128-33	2	Nut-HF
51	1-603841	2	Pump-Hydraulic, RH
*51	80-6130	1	Kit-Seal, Overhaul

Ref. No.	Part No.	Qty.	Description

* Not illustrated

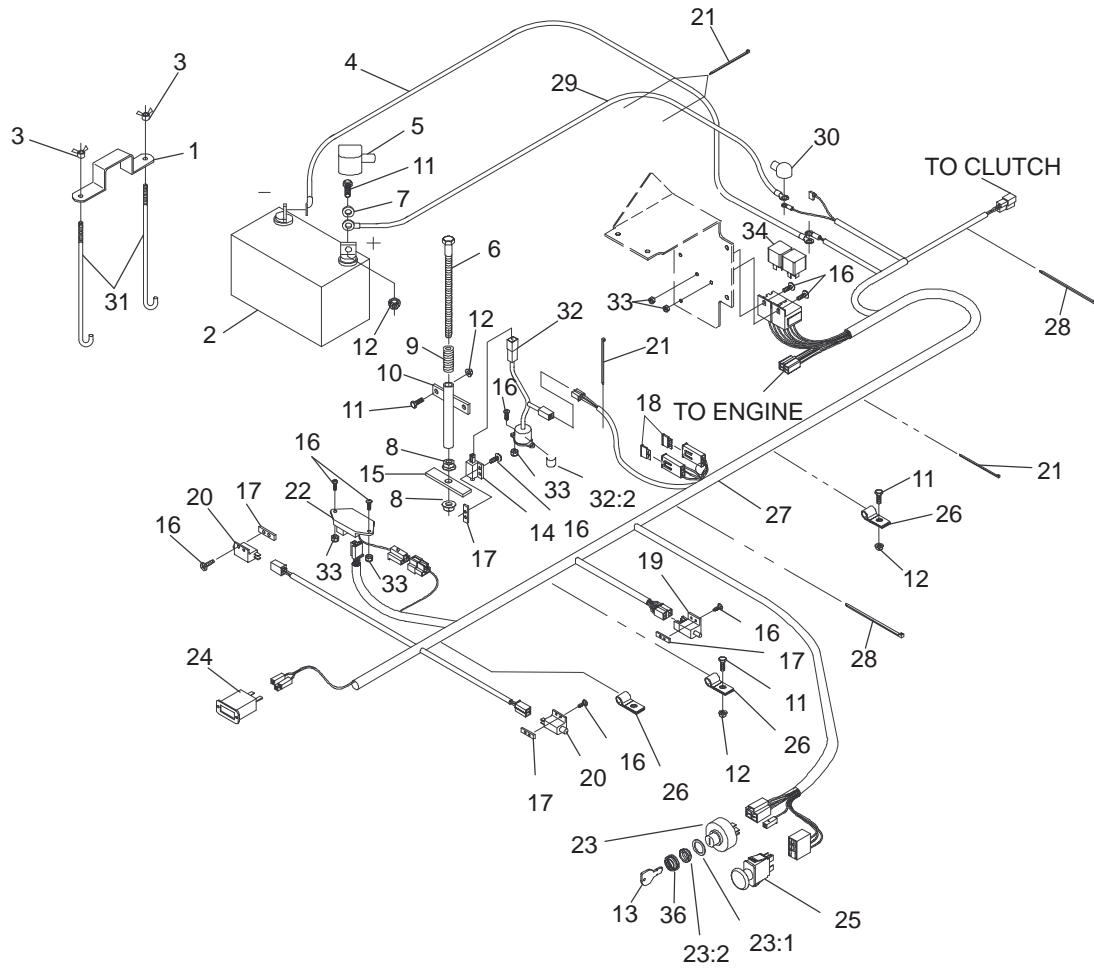


Sheet No.:9

Shield and Clutch Assembly

Ref. No.	Part No.	Qty.	Description	Ref. No.	Part No.	Qty.	Description
1	1-613235	4	Washer	14:5	3256-63	3	Washer-Flat
3	1-523420	2	Bumper	17	1-643313-03	1	Guard-Muffler
4	1-633545	2	Spacer-Grommet	20	1-643264-03	2	Bracket-Guard, Top
5	1-633543-03	1	Strap-Clutch, Brake	22	321-4	10	Screw-HH
6	1-603610	2	Washer-Spring	24	323-6	6	Screw-HH
7	1-633615-03	1	Guard-Clutch	25	3212-10	1	Screw-HH
8	1-633988	1	Spacer-Anchor, Clutch	27	3296-42	6	Nut-Lock NI
9	103-0662	1	Clutch ASM	29	3256-2	4	Washer-Flat
10	1-633453	1	Spacer,Clutch	30	3256-3	1	Washer-Flat
11	1-644276	1	Shield ASM	31	32128-20	1	Nut-HF
11:1	1-633462	1	Decal-Important	32	3290-357	4	Nut-Flange, Lock
11:2	1-634308	1	Shield/Lift ASM	33	32128-33	5	Nut-HF
11:2:1	1-633298	1	Shield-Engine	34	1-633396	1	Clip-Loom
11:2:2	1-633300-03	1	Lift-Shield	35	1-809076	2	Screw
11:2:3	1-803035	3	Rivet-Pop	36	1-323235	2	Washer-Spring
11:3	103-0368	1	Decal-Devices, Rotating	37	1-323236	2	Spacer
12	1-543232	1	Nipple	38	1-633630	2	Grommet-Brake
13	1-303428	1	Elbow-90°	39	322-6	1	Screw-HH
14	1-634796	1	LH Shield ASM	40	322-19	1	Screw-HH
14:1	1-523285	1	Clip-Baffle, Rear	41	3296-29	1	Nut-Lock
14:2	1-633301	1	Shield-Engine	☆42		1	Engine-Kohler, 23hp Ch23s-76550
14:3	1-633795-03	1	Baffle-Engine Shield, LH	43	1-644316	1	RH Shield ASM
14:4	1-803035	3	Rivet-Pop	43:1	1-523285	1	Clip-Baffle, Rear
				43:2	1-633301	1	Shield-Engine

☆ Not serviced

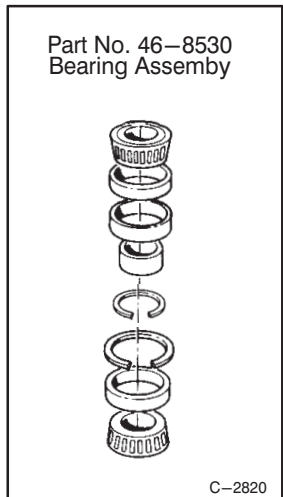
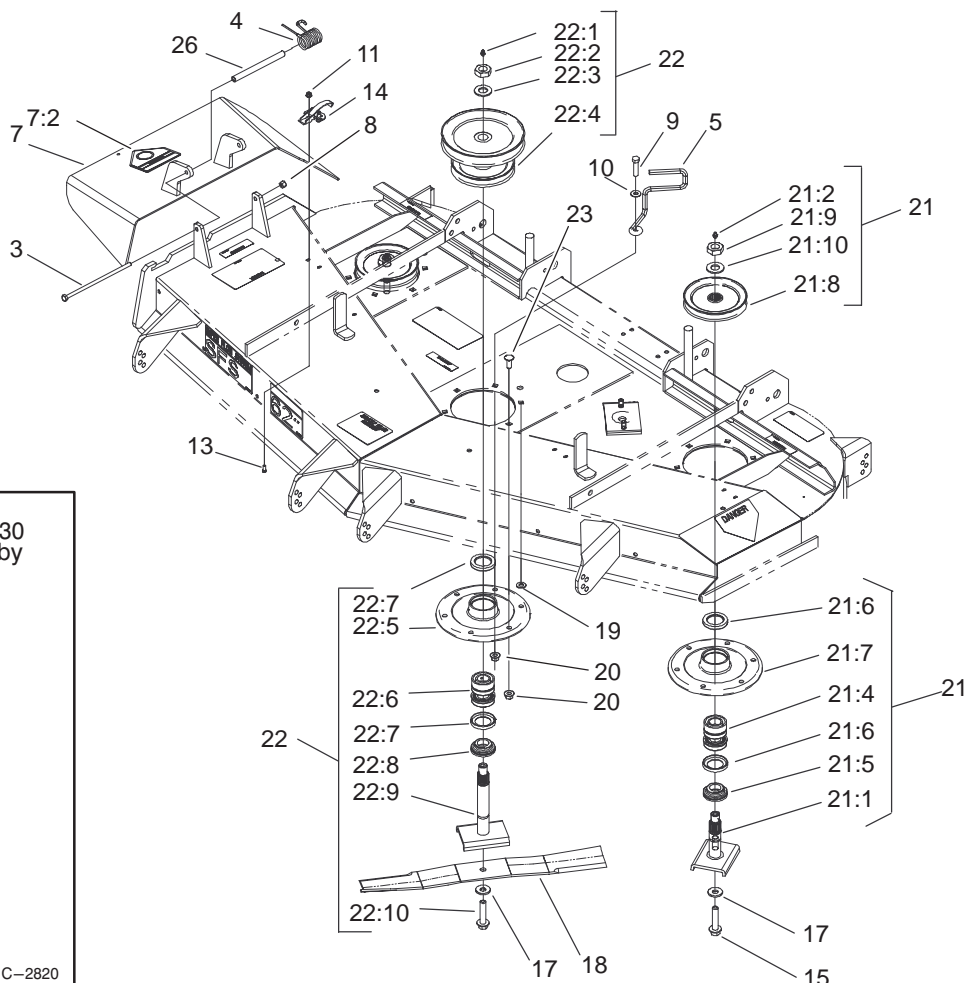


Sheet No.:11

Electrical System Assembly

Ref. No.	Part No.	Qty.	Description
1	1-633652-03	1	Strap-Holddown, Battery
2	1-603479	1	Battery
3	1-543792	2	Wingnut
4	1-633307	1	Wire-Ground
5	1-543391	1	Insulator-Battery
6	1-800282	1	Screw-HH
7	3256-2	2	Washer-Flat
8	32128-20	2	Nut-HF
9	1-523415	1	Spring-Switch, Seat
10	1-522424-03	1	Mount-Spring, Seat
11	321-4	6	Screw-HH
12	32128-33	6	Nut-HF
13	63-8360	2	Key-Ignition
14	1-513152	1	Switch-Closed, Normally
15	1-513180	1	Plate-Switch, Seat
16	3290-500	14	Screw-PPH
17	1-633181	4	Plate-Tapped
18	1-816001	2	Fuse-Type, Blade
19	1-633111	1	Switch
20	1-513051	2	Switch-Open, Normally
21	1-303287	5	Tie-Plastic
22	100-6186	1	Module-Delay, Seat
23	88-9830	1	Switch-Ignition

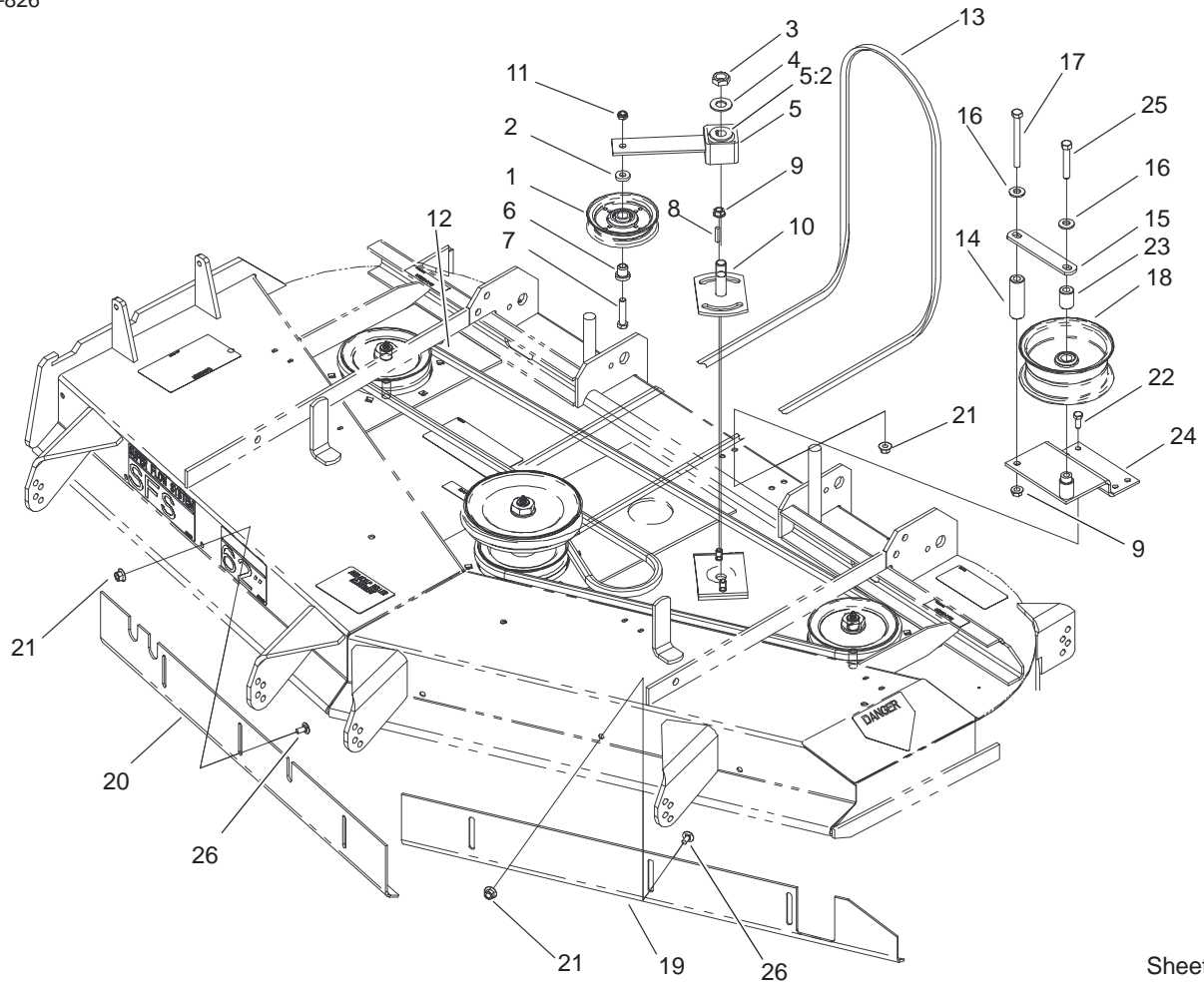
Ref. No.	Part No.	Qty.	Description
23:1	3254-5	1	Washer-Lock, Internal
23:2	218-461	1	Nut-HH
24	1-513374	1	Meter-Hours
25	1-633673	1	Switch-Delta
26	1-633396	3	Clip-Loom
27	100-4340	1	Harness-Wire
28	1-303335	2	Tie-Plastic
29	1-523281	1	Wire-Starter
30	1-543393	1	Insulator-Solenoid
31	1-633651	2	Bolt-Holddown
32	1-644427	1	Tilt Switch ASM
32:2	1-643401	1	Decal-Switch, Mercury
33	3296-2	6	Nut-Lock
34	1-643275	2	Relay
36	103-0499	1	Seal-Switch, Ignition



Spindle and Pulley Assembly

Ref. No.	Part No.	Qty.	Description
3	322-50	1	Screw-Cap
4	104-8554	1	Spring-Torsion
5	99-8933	1	Guide-Belt
7	104-7763	1	Deflector ASM
7:2	54-9220	1	Decal-Danger
8	3296-29	1	Nut-Lock
9	323-8	1	Screw-HH
10	3256-3	1	Washer-Flat
11	32128-17	8	Nut-Lock, Flange
13	3290-321	8	Screw-HWH
14	249-21	4	Clamp-Slotted
15	92-5816	2	Bolt-Blade
17	1-513435	3	Washer-Spring
18	44-6250	3	Blade
19	3256-24	1	Washer-Flat
20	32128-21	18	Nut-HF
21	99-4640	2	Outer Spindle ASM
21:1	27-0920	1	Shaft-Spindle
21:2	302-2	1	Fitting-Grease
21:4	46-8530	1	Bearing ASM
21:5	27-0950	1	Spacer-Bearing, Spindle
21:6	253-139	2	Seal-Oil
21:7	61-4160	1	Housing-Spindle
21:8	99-4614	1	Pulley & Hub
21:9	32146-20	1	Nut-Jam

Ref. No.	Part No.	Qty.	Description
21:10	7-4150	1	Washer-Pinion
22	99-4944	1	Middle Spindle ASM
22:1	302-2	1	Fitting-Grease
22:2	32146-20	1	Nut-Jam
22:3	92-5836	1	Washer-Axle
22:4	99-4939	1	Pulley & Hub ASM
22:5	61-4160	1	Housing-Spindle
22:6	46-8530	1	Bearing ASM
22:7	253-139	2	Seal-Oil
22:8	27-0950	1	Spacer-Bearing, Spindle
22:9	51-3551	1	Shaft-Spindle
22:10	92-5816	1	Bolt-Blade
23	3231-22	17	Screw-CARR
26	104-8555	1	Spacer-Deflector, Mounting



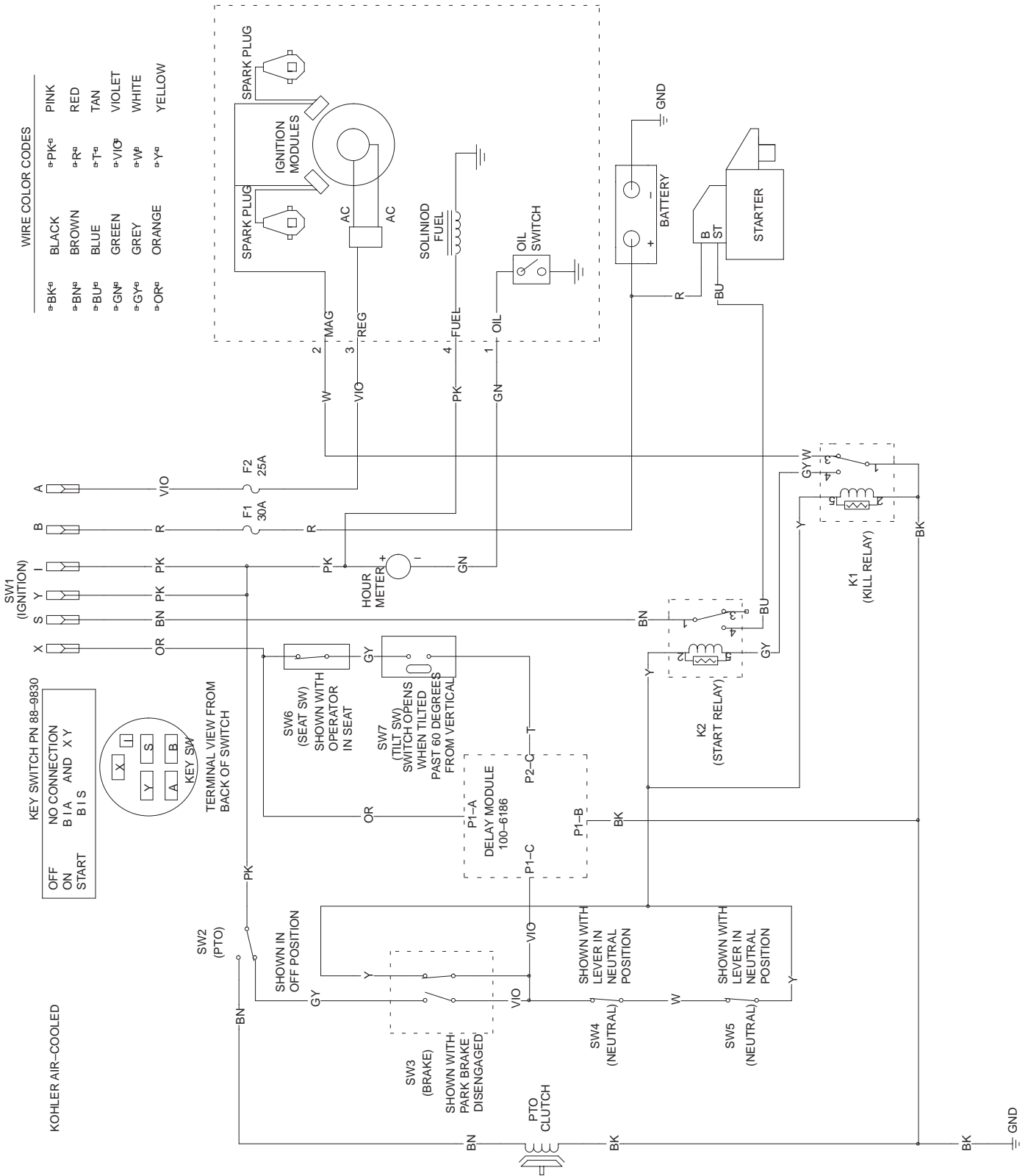
Sheet No.:34

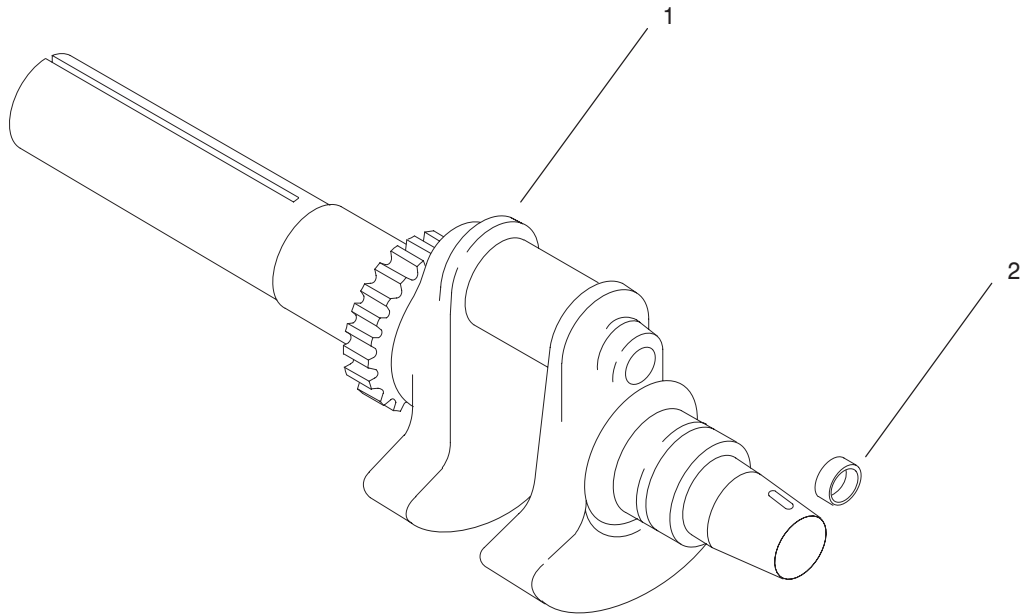
Belt and Idler Arm Assembly

Ref. No.	Part No.	Qty.	Description
1	65-5940	1	Pulley-Idler
2	7-0081	1	Washer-Flat
3	3296-71	1	Nut-Lock NI
4	3256-27	1	Washer-Flat
5	27-8580	1	Idler Socket & Bushing ASM
5:2	27-8490	1	Bushing-Rubber, Idler
6	65-5950	1	Bushing-Pulley
7	3211-8	1	Screw-HH
8	5-1077	1	Key-Square
9	3290-357	3	Nut-Flange, Lock
10	44-6301	1	Plate-Idler, LH
11	3296-5	1	Nut-Lock, NI
12	44-6260	1	V-Belt
13	99-4647	1	V-Belt-Drive, Deck
14	99-4659	1	Spacer-Bracket
15	1-653189	1	Plate-Guide, Belt
16	98-5975	2	Washer-Belleville
17	323-42	1	Screw-HH
18	1-413099	1	Pulley-Idler
19	99-2833-03	1	Baffle-Front, LH
20	99-2834-03	1	Baffle-Front, RH
21	32128-20	10	Nut-HF
22	322-3	4	Screw-HH
23	1-653190	1	Spacer
24	99-4684-01	1	Bracket-Pulley

Ref. No.	Part No.	Qty.	Description
25	323-11	1	Screw-HH
26	3230-18	6	Screw-CARR

Electrical Schematic



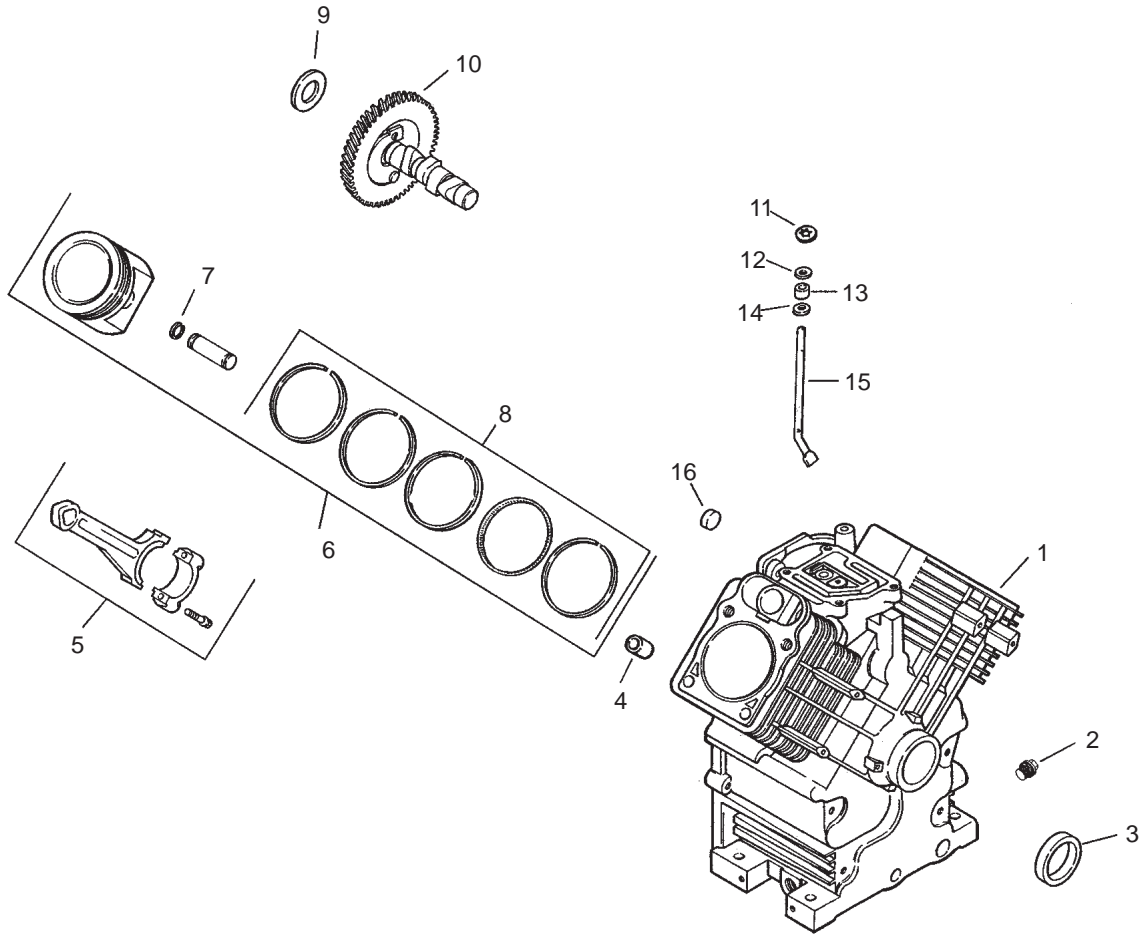


Crankshaft Assembly – Group 1 Kohler CH23S-76550

Ref. No.	Part No.	Qty.	Description
1	24 014 84-S	1	Crankshaft assembly (Includes 2)
2	52 139 09-S	1	Plug, cup

Ref. No.	Part No.	Qty.	Description

Obtain parts from Kohler

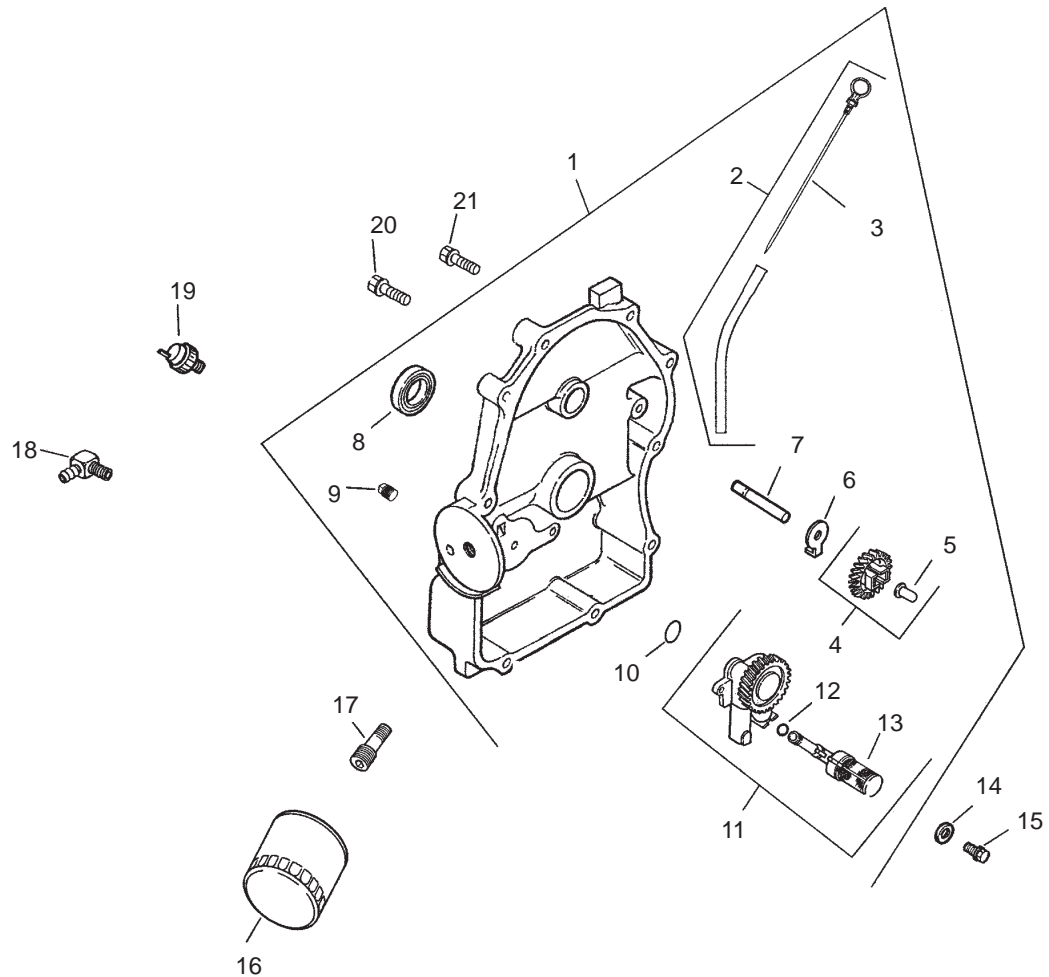


Crankcase Assembly – Group 2 Kohler CH23S-76550

Ref. No.	Part No.	Qty.	Description
1		1	Crankcase (USE: Short Block or Miniblock)
2	25 139 57-S	2	Plug, solid sq. hd. 3/8" N.P.T.F.
3	24 032 01-S	1	Seal, oil front
4	24 380 13-S	6	Pin, locating
5	24 067 13-S	2	Connecting Rod (Std.)
6	24 067 14-S	2	Connecting Rod (.25)
	24 874 09-S	2	Piston w/Ring Set (Std.) (Includes 7, 8)
	24 874 10-S	2	Piston w/Ring Set (.25) (Includes 7, 8)
	24 874 11-S	2	Piston w/Ring Set (.50) (Includes 7, 8)
7	24 874 15-S	2	Piston w/Ring Set (.080) (Includes 7, 8)
	24 018 01-S	4	Retainer, piston pin
	24 108 08-S	2	Ring Set (Std.)
8	24 108 09-S	2	Ring Set (.25)
	24 108 10-S	2	Ring Set (.50)
	9	12 422 09-S	A/R
12 422 13-S		A/R	Shim, camshaft
12 422 07-S		A/R	Shim, camshaft
12 422 08-S		A/R	Shim, camshaft

Ref. No.	Part No.	Qty.	Description
	12 422 10-S	1	Shim, camshaft
	12 422 11-S	A/R	Shim, camshaft
	12 422 12-S	A/R	Shim, camshaft
10	24 012 10-S	1	Camshaft
11	24 018 09-S	1	Ring, retainer
12	M-931010-S	1	Washer, nylon (top)
13	28 032 09-S	1	Seal, governor cross shaft
14	24 468 15-S	1	Washer, (bottom)
15	24 144 33-S	1	Shaft, governor cross
16	52 139 09-S	1	Plug, cup

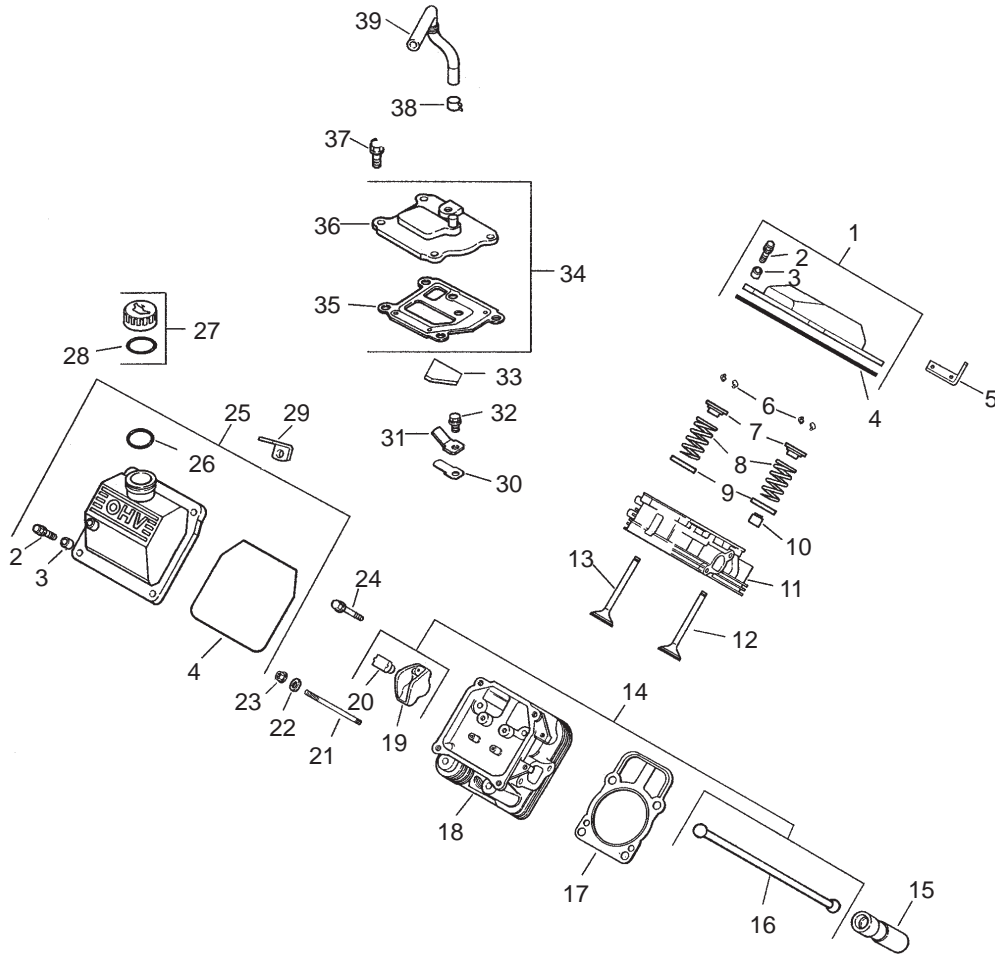
Obtain parts from Kohler



Oil Pan/Lubrication Assembly – Group 3 Kohler CH23S-76550

Ref. No.	Part No.	Qty.	Description	Ref. No.	Part No.	Qty.	Description
1	24 009 83-S	1	Kit, closure plate (Includes 2-13)	18	25 155 02-S	1	Connector
2	24 755 121-S	1	Kit, dipstick & tube (Includes 3)	19	24 099 03-S	1	Switch, oil pressure
3	24 038 10-S	1	Dipstick	20	24 086 16-S	9	Screw, hex. flange M8x1.25x45
4	24 043 12-S	1	Kit, governor gear w/pin (Includes 5)	21	24 086 17-S	1	Screw, hex. flange M8x1.25x45
5	12 380 01-S	1	Pin, governor regulating				
6	52 448 02-S	1	Tab, locking				
7	12 144 02-S	1	Shaft, governor gear				
8	52 032 08-S	1	Seal, oil (PTO end)				
9	25 139 60-S	2	Plug, allen hd. 1/8" pipe				
10	24 153 08-S	1	O-Ring				
11	24 393 10-S	1	Oil pump assembly (Includes 12, 13)				
12	24 153 01-S	1	O-Ring, oil pick-up				
13	24 381 04-S	1	Pick-up, oil				
14	M-631005-S	2	Washer, plain 6 mm				
15	M-645025-S	2	Screw, hex. flange M6x1.0x25				
16	52 050 02-S	1	Filter, oil				
17	24 136 01-S	1	Nipple, oil filter				

Obtain parts from Kohler

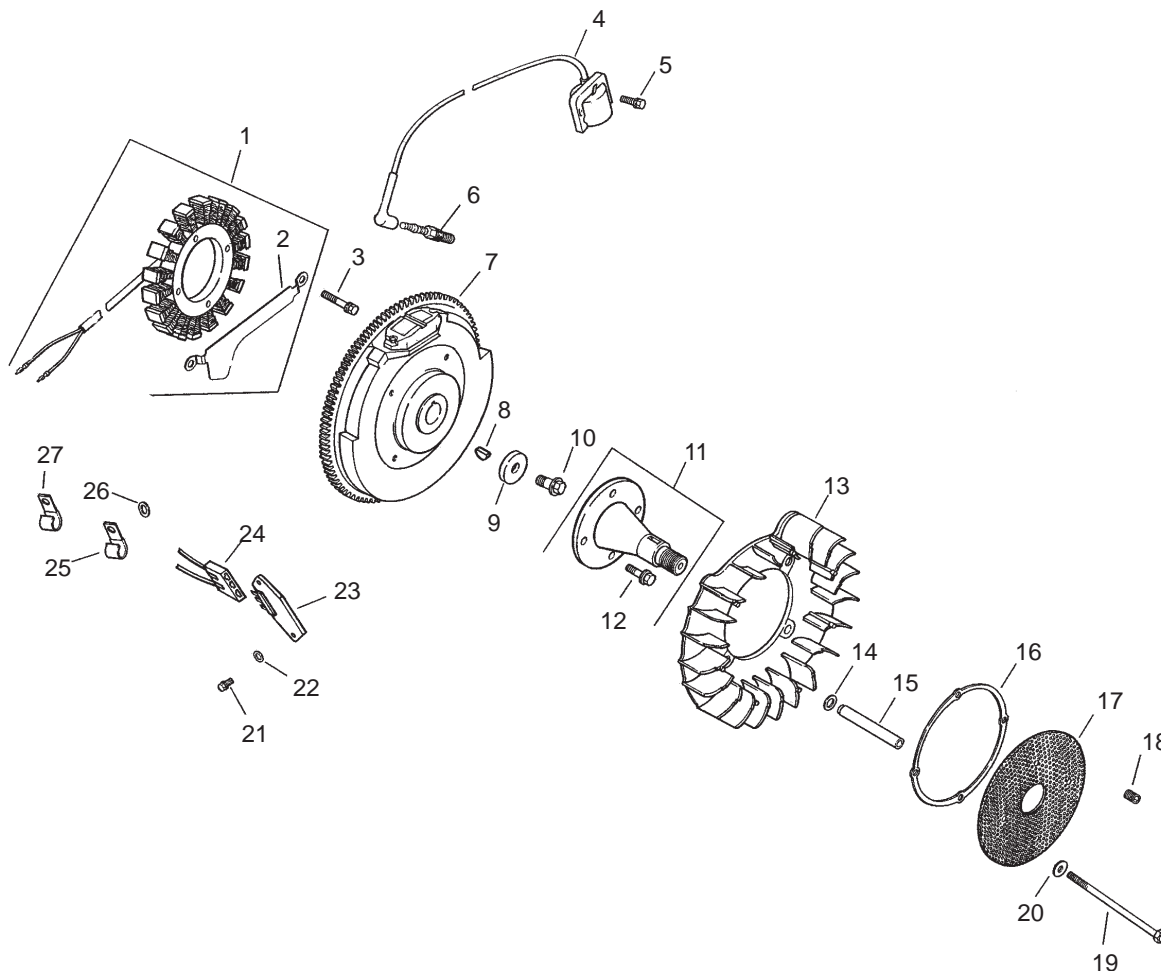


Head/Valve/Breather Assembly – Group 4 Kohler CH23S-76550

Ref. No.	Part No.	Qty.	Description
1	24 755 74-S	1	Kit, valve cover – plain (Includes 2-4)
2	M-651030-S	4	Screw, hex. flange M6x1.0x30
3	24 112 08-S	4	Spacer
4	24 153 16-S	1	O-Ring
5	24 445 01-S	1	Strap, lifting
6	12 755 03-S	4	Kit, retainer
7	12 173 01-S	4	Cap, valve spring
8	24 089 02-S	4	Spring, valve
9	235011-S	4	Retainer, spring
10	66 032 05-S	2	Seal, valve stem
11	24 318 68-S	1	Head asm, #1 cylinder
12	24 017 01-S	2	Valve, intake (Std.)
	24 017 02-S	2	Valve, intake (.25)
13	24 016 01-S	2	Valve, exhaust (Std.)
	24 016 02-S	2	Valve, exhaust (.25)
14	24 755 66-S	1	Kit, valve train (Includes 16, 19, 20)
15	25 351 01-S	4	Lifter, valve
16	24 411 05-S	4	Rod, push
17	24 041 40-S	2	Gasket, cylinder head
18	24 318 71-S	1	Head asm, #2 cylinder
19	25 186 01-S	4	Arm, rocker

Ref. No.	Part No.	Qty.	Description
20	24 599 01-S	4	Pivot, rocker arm
21	24 072 09-S	8	Stud M10x1.5x90
22	24 468 16-S	8	Washer, flat
23	24 100 10-S	8	Nut, hex. flg M8x1.25
24	M-640034-S	4	Screw, hex. M6x1.0x34
25	24 755 75-S	1	Kit, valve cover – oil fill (Includes 2-4, 26)
26	24 153 09-S	1	O-Ring
27	24 755 46-S	1	Kit, oil fill cap (Incl. 28)
28	12 153 03-S	1	O-Ring, oil fill cap
29	12 445 05-S	1	Strap, lifting
30	24 402 03-S	1	Reed, breather
31	12 018 01-S	1	Retainer, breather reed
32	M-545010-S	1	Screw, hex. flange M5x0.8x10
33	24 050 01-S	1	Filter, breather
34	24 033 01-S	1	Kit, breather (Includes 35, 36)
35	24 041 23-S	1	Gasket, breather
36	24 096 58-S	1	Cover, breather
37	M-645020-S	4	Screw, hex. flange M6x1.0x20
38	25 237 08-S	1	Clamp, breather
39	24 326 31-S	1	Hose, breather

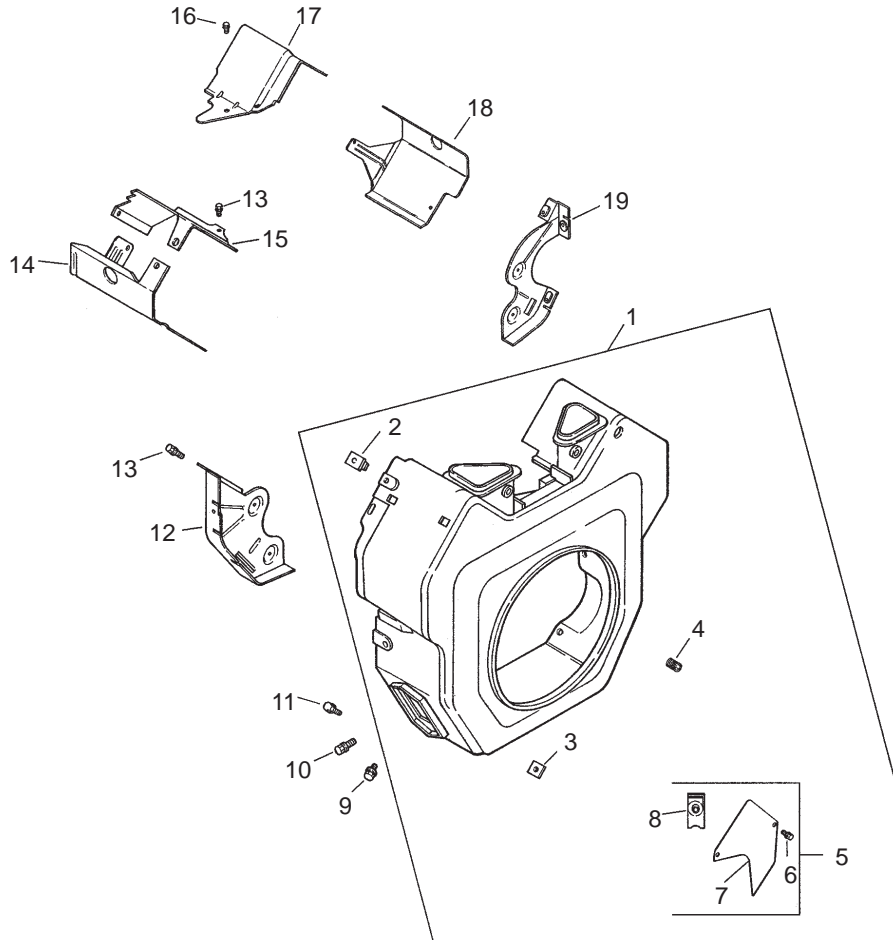
Obtain parts from Kohler



Ignition/Electrical Assembly – Group 5 Kohler CH23S-76550

Ref. No.	Part No.	Qty.	Description	Ref. No.	Part No.	Qty.	Description
1	54 755 09-S	1	Kit, 15 amp stator (Includes 2)	18	25 086 43-S	1	Screw, set
2	24 126 71-S	1	Bracket, stator wire	19	M-603100-S	4	Screw, hex. cap M6x1.0x100
3	M-548025-S	2	Screw, hex. cap M5x0.8x25	20	X-25-53-S	4	Washer, plain 1/4"
4	24 584 01-S	2	Module, ignition	21	24 086 18-S	2	Screw, phillips hd. 11-16x7/8
5	M-545020-S	4	Screw, hex. flange thread forming, M5x0.8x25	22	X-25-92-S	2	Washer, plain 3/16"
6	12 132 06-S	2	Spark Plug	23	25 403 03-S	1	Rectifier-regulator 15 amp
7	24 025 01-S	1	Flywheel	24	236602-S	1	Connector
8	X-42-15-S	1	Key	25	235173-S	1	Clip, cable (clamps wires to intake manifold)
9	12 468 03-S	1	Washer, plain 3/8"	26	X-25-63-S	1	Washer, plain 1/4"
10	12 086 14-S	1	Screw, hex. flange M10x1.5x46	27	48 154 02-S	1	Clip, cable (B+ lead) NOT ILLUSTRATED
11	24 755 08-S	1	Kit, front drive shaft (Includes 12)		X-22-11-S	1	Washer, lock 1/4"
12	M-839025-S	4	Screw, hex. flange M8x1.25x25		24 176 07-S	1	Harness, wiring
13	24 157 03-S	1	Fan		24 518 12-S	1	Lead, black (5" -12" gauge - insulated grip barrel eyelet terminals)
14	24 468 11-S	4	Washer, spring		25 454 03-S	2	Tie
15	24 112 14-S	4	Spacer				
16	24 141 06-S	1	Support, ring				
17	24 162 22-S	1	Screen, grass				

Obtain parts from Kohler

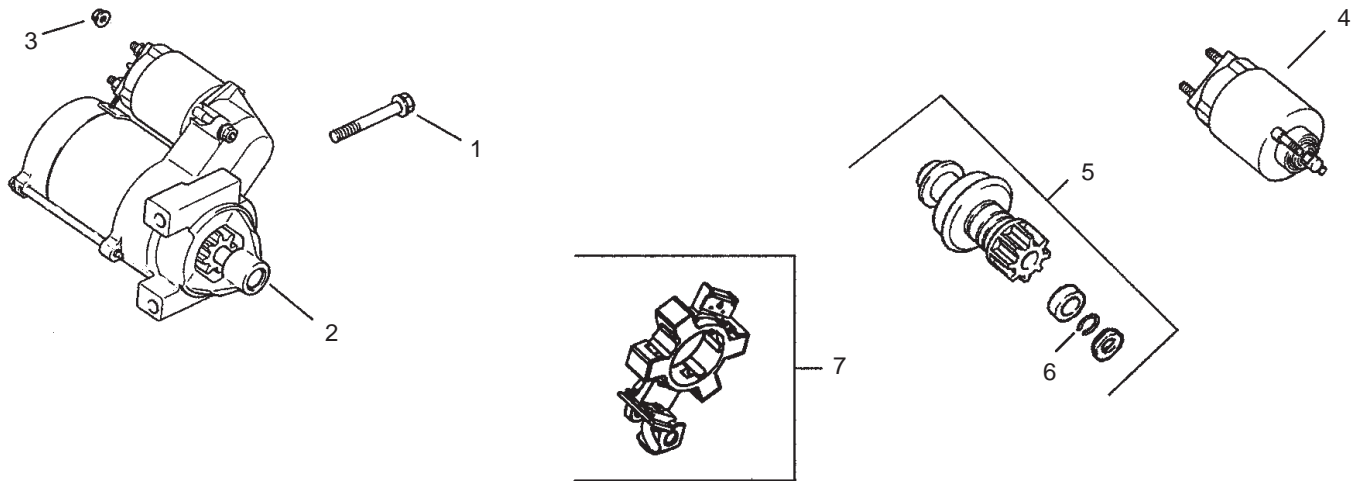


Blower Housing and Baffle Assembly – Group 6 Kohler CH23S-76550

Ref. No.	Part No.	Qty.	Description
1	54 027 98-S	1	Housing, blower asm (Includes 2-8)
2	24 100 01-S	3	Nut, plastic
3	24 100 02-S	2	Nut, plastic
4	25 086 43-S	1	Screw, set
5	25 755 21-S	1	Kit, access panel (Includes 6-8)
6	M-645016-S	4	Screw, hex. flange M6x1.0x16
7	24 096 64-S	2	Cover, access
8	25 154 02-S	4	Clip
9	M-551016-S	1	Screw, hex. flange M5x0.8x16
10	M-545016-S	3	Screw, hex flange M5x0.8x16
11	M-545020-S	4	Screw, hex flange M5x0.8x20
12	24 146 16-S	1	Plate, backing #2 side
13	M-645016-S	10	Screw, hex. flange M6x1.0x16
14	24 063 20-S	1	Baffle, cylinder barrel #2 side
15	24 063 17-S	1	Baffle, valley #2 side

Ref. No.	Part No.	Qty.	Description
16	M-545010-S	2	Screw, hex. flange M5x0.8x10
17	24 063 24-S	1	Baffle, valley #1 side
18	24 063 58-S	1	Baffle, cylinder barrel #1 side
19	24 146 20-S	1	Plate, backing #1 side
			NOT ILLUSTRATED
	24 146 33-S	1	Plate, HP

Obtain parts from Kohler

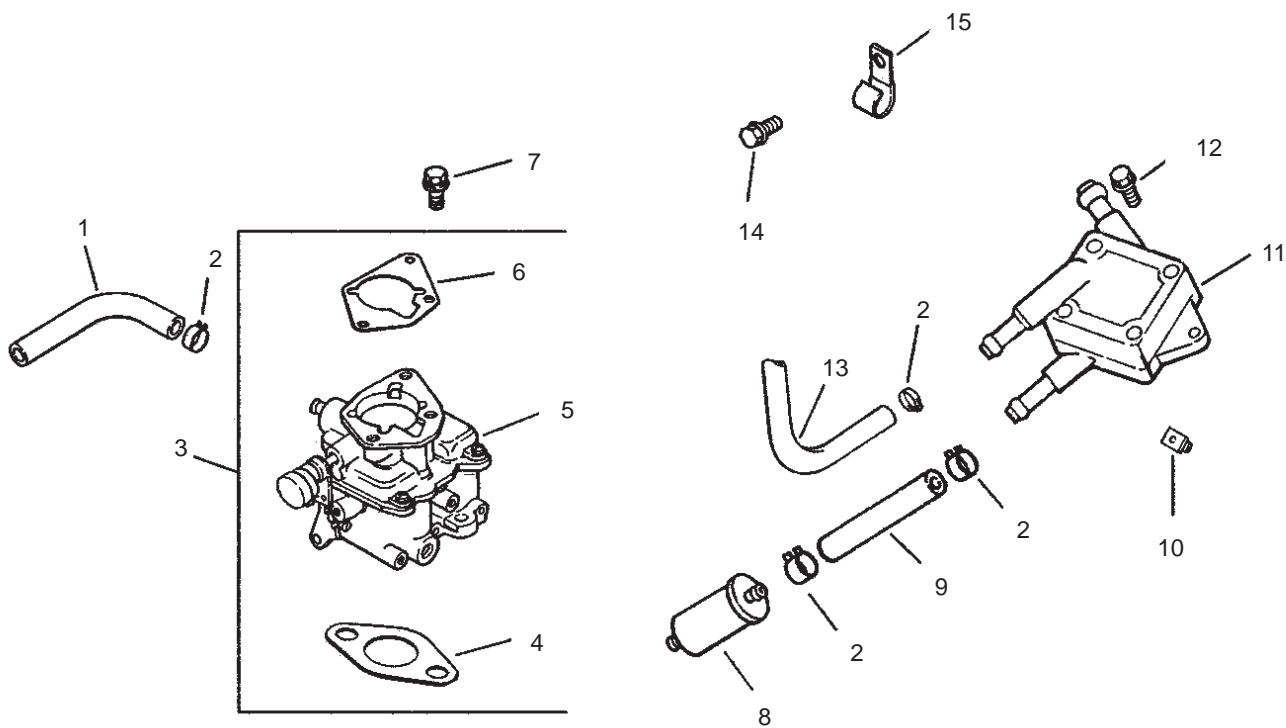


Starting System Assembly – Group 7 Kohler CH23S-76550

Ref. No.	Part No.	Qty.	Description
1	M-839080-S	2	Screw, hex. flange M8x1.25x80
2	25 098 08-S	1	Starter, solenoid shift asm (Includes 4-7)
3	M-841080-S	1	Nut, hex. flange M8x1.25
4	25 435 04-S	1	Kit, solenoid
5	25 755 33-S	1	Kit, pinion drive (Includes 6)
6	25 141 05-S	1	Ring
7	25 221 01-S	1	Kit, brush

Ref. No.	Part No.	Qty.	Description

Obtain parts from Kohler

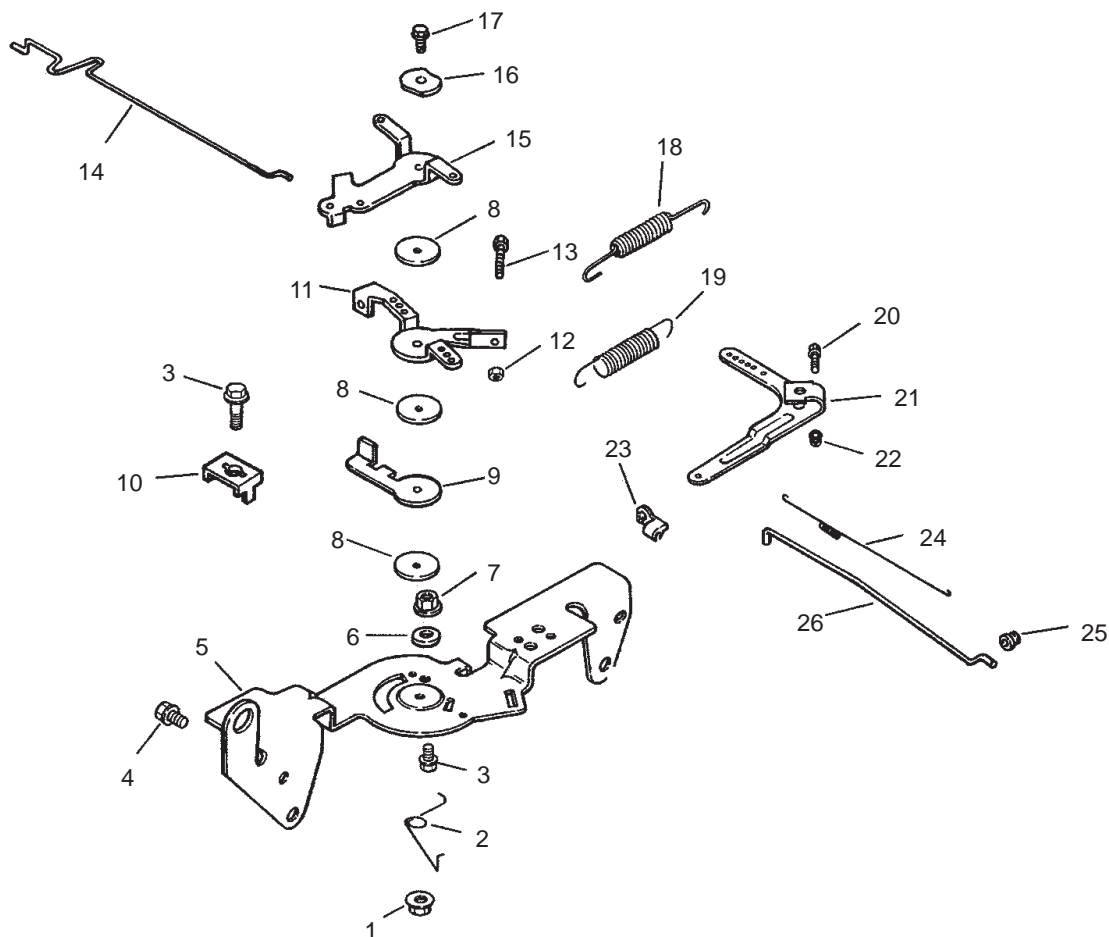


Fuel System Assembly – Group 8 Kohler CH23S-76550

Ref. No.	Part No.	Qty.	Description
1	25 353 32-S	1	Line, fuel 9-1/4"
2	25 237 14-S	6	Clamp, hose
3	24 853 58-S	1	Kit, carburetor w/gasket (Includes 4-6)
4	24 041 17-S	1	Gasket, carburetor
5	24 053 58	1	Carburetor asm (For information only not available separately) (Service with: 24 757 01-S, 24 757 02-S, 24 757 03-S, 24 757 07-S, 24 757 08-S, 24 757 09-S)
6	24 041 06-S	1	Gasket, air cleaner
7	M-651030-S	2	Screw, hex. flange M6x1.0x30
8	24 050 02-S	1	Filter, fuel
9	25 353 15-S	1	Line, fuel 3-1/2"
10	24 100 01-S	2	Nut, plastic
11	24 393 16-S	1	Pump, fuel – pulse
12	24 086 12-S	2	Screw, hex. cap 18 mm
13	24 353 02-S	1	Line, fuel 15-1/2"

Ref. No.	Part No.	Qty.	Description
14	M-650012-S	1	Screw, hex. flange M6x1.0x10
15	47 154 01-S	1	Clip, cable NOT ILLUSTRATED
	24 757 01-S	1	Kit, solenoid
	24 757 02-S	1	Kit, float
	24 757 03-S	1	Kit, carburetor repair
	24 757 07-S	1	Kit, choke repair
	24 757 08-S	1	Kit, repair – accelerator pump seal & bushing
	24 757 09-S	1	Kit, repair – accelerator pump diaphragm

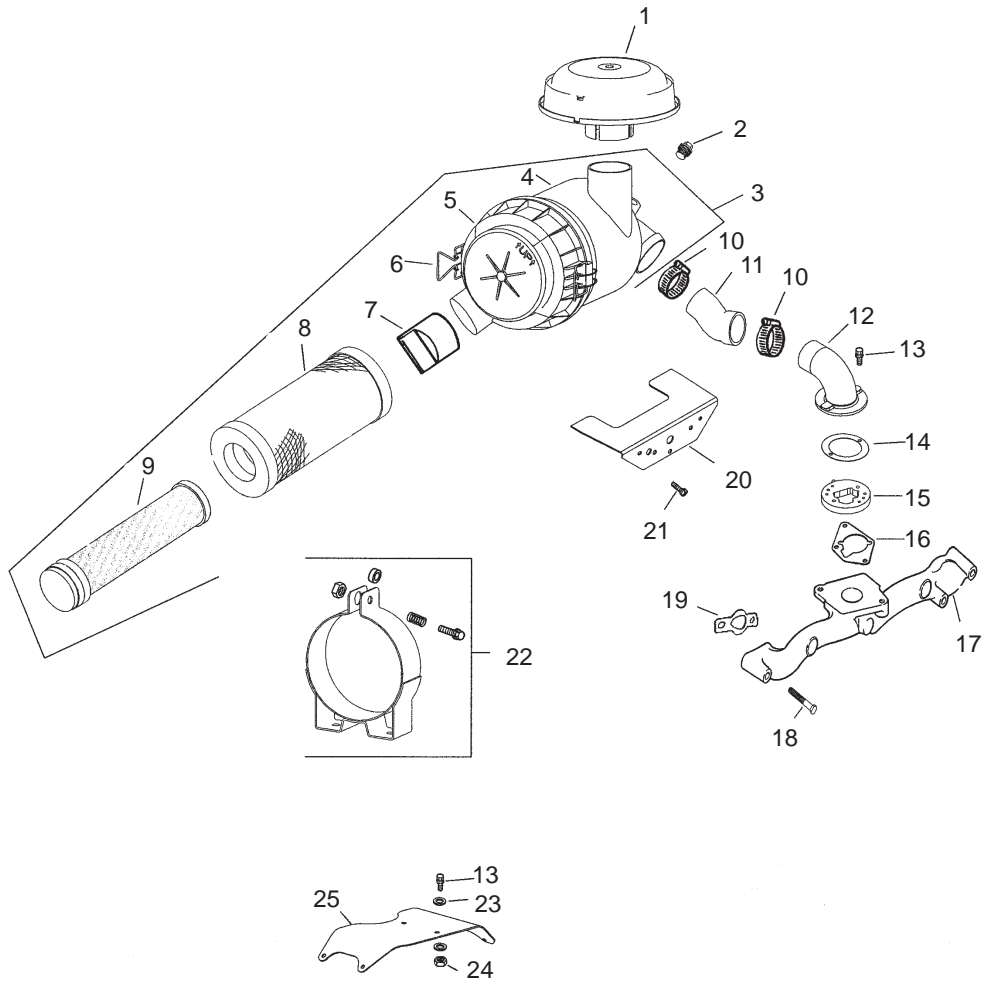
Obtain parts from Kohler



Engine Control Assembly – Group 9 Kohler CH23S-76550

Ref. No.	Part No.	Qty.	Description	Ref. No.	Part No.	Qty.	Description
1	M-547050-S	1	Nut, hex. lock M5x0.8	19	24 089 44-S	1	Spring, governor
2	24 089 03-S	1	Spring, choke return	20	24 211 03-S	1	Bolt, rd. hd. sq. neck M6x1.0x25
3	M-545016-S	3	Screw hex. flange M5x0.8x16	21	24 090 33-S	1	Lever, governor
4	M-645016-S	4	Screw, hex. flange M6x1.0x16	22	M-641060-S	1	Nut, hex. flange M6x1.0
5	24 126 56-S	1	Bracket, control	23	25 158 11-S	1	Bushing, linkage retaining
6	X-20-1-S	1	Washer, lock 1/4"	24	24 089 01-S	1	Spring, linkage
7	M-541050-S	1	Nut, hex. flange M5x0.8	25	25 158 08-S	1	Bushing, throttle linkage
8	24 468 01-S	3	Washer, plain 1/4"	26	24 079 01-S	1	Linkage, throttle
9	24 090 07-S	1	Lever, throttle actuator				
10	12 237 01-S	2	Clamp, cable				
11	24 090 03-S	1	Lever, throttle control				
12	M-446030-S	1	Nut, hex. flange M4x0.7				
13	M-401030-S	1	Screw, hex. flange M4x0.7x30				
14	24 079 02-S	1	Linkage, choke				
15	24 090 05-S	1	Lever, choke				
16	41 468 03-S	1	Washer, spring 1/4"				
17	M-545020-S	1	Screw, hex. flange M5x0.8x20				
18	24 089 51-S	1	Spring, throttle limiter				

Obtain parts from Kohler

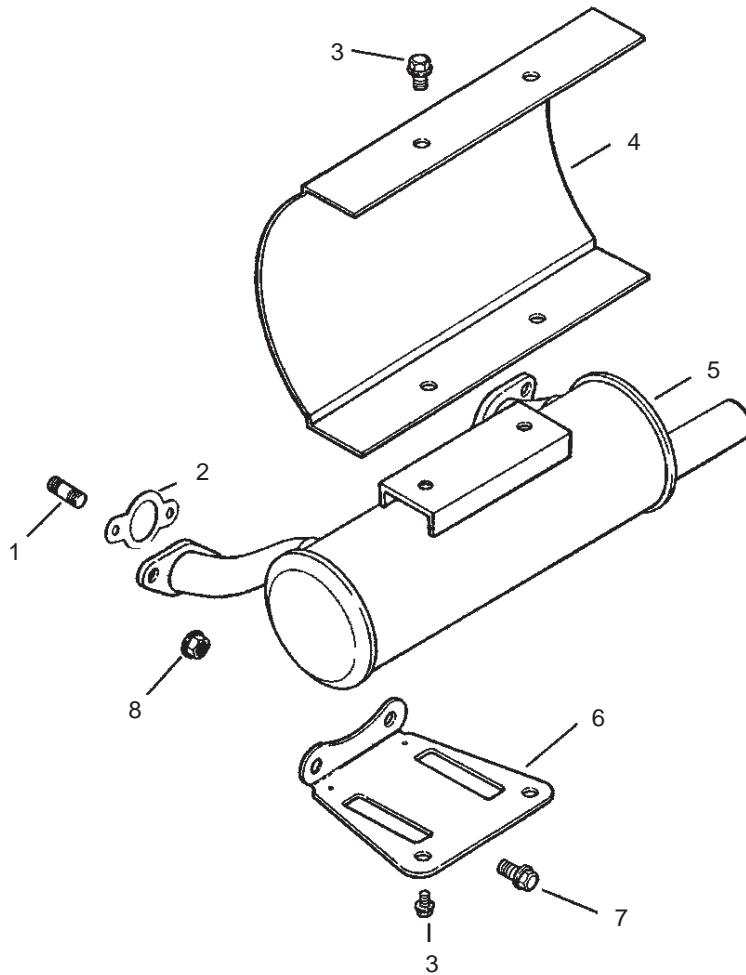


Air Intake/Filtration Assembly – Group 10 Kohler CH23S-76550

Ref. No.	Part No.	Qty.	Description
1	25 324 02-S	1	Hood, air cleaner
2	25 139 20-S	1	Plug, pipe
3	25 048 07-S	1	Cleaner, heavy duty air (Includes 4-9)
4	25 081 01-S	1	Housing, heavy duty air cleaner
5	25 096 06-S	1	Cover, heavy duty air cleaner
6	25 154 05-S	2	Clip
7	24 462 07-S	1	Valve, dust ejector
8	25 083 01-S	1	Element – primary
9	25 083 04-S	1	Element – safety filter
10	25 237 07-S	2	Clamp, hose
11	24 326 32-S	1	Hose, air cleaner
12	24 029 21-S	1	Adapter, remote air cleaner
13	M-639016-S	6	Screw, hex. flange M6x1.0x16
14	24 041 34-S	1	Gasket, adapter
15	24 029 31-S	1	Adapter
16	24 041 06-S	1	Gasket, air cleaner base
17	24 164 14-S	1	Manifold, intake

Ref. No.	Part No.	Qty.	Description
18	25 086 84-S	4	Screw, hex. flange M6x1.0x55
19	24 041 01-S	2	Gasket, intake manifold
20	24 314 25-S	1	Shield, debris
21	24 086 06-S	2	Screw, phillips hd. 11-16x3/4"
22	25 126 02-S	1	Bracket, air cleaner
23	X-25-73-S	4	Washer, plain 1/4"
24	M-647060-S	2	Nut, hex. lock M6x0.8
25	24 126 98-S	1	Bracket, air cleaner NOT ILLUSTRATED
	25 113 27-S	1	Decal, air cleaner

Obtain parts from Kohler



Exhaust Assembly – Group 11 Kohler CH23S-76550

Ref. No.	Part No.	Qty.	Description
1	25 072 04-S	4	Stud, M8x1.25x33
2	24 041 02-S	2	Gasket, exhaust
3	M-650012-S	4	Screw, hex. flange M6x1.0x12
4	24 314 04-S	1	Shield, heat
5	24 068 18-S	1	Muffler
6	24 126 12-S	1	Bracket, muffler
7	M-839020-S	2	Screw, hex. flange M8x1.25x20
8	M-841080-S	4	Nut, hex. flange M8x1.25
	24 755 113-S	1	NOT ILLUSTRATED Gasket Set

Ref. No.	Part No.	Qty.	Description

Obtain parts from Kohler

