



Mid–Size Mower

ProLine Gear with Side Discharge Mower

Model No. 30254—210010001 and Up

Parts Catalog

Ordering Replacement Parts

To order replacement parts, please supply: the part number, the quantity, and the description of each part desired.

Understanding Reference Numbers

Each identified part in an illustration has a reference number. The reference number for a part also appears in the parts list, along with other information about the part.

This catalog uses two special reference number formats, one to indicate parts in a service assembly and another to indicate the quantity of a given part in an illustration.

Service Assembly Reference Numbers

Parts in service assemblies have reference numbers in the form **a:b**. The **a** represents the reference number of the entire service assembly and the **b** represents a sequential number unique to each part within the service assembly.

For example, a wheel assembly might be identified by reference number **6**, the tire by **6:1**, the valve by **6:2**, and the wheel by **6:3**. When you order the assembly identified by reference number **6**, you receive all parts identified by reference numbers **6:1**, **6:2**, and **6:3**. However, you may also order any part individually.

Reference numbers of this type appear in illustrations and in part lists.

Reference Numbers Indicating Quantity

In an illustration, if a reference number indicates more than one part, the reference number has the form **nX y**. The **n** represents the quantity of the part, the **X** is the multiplication symbol, and the **y** represents the reference number.

For example, in an illustration, the reference number **2X 37** means that two of the parts identified by reference number **37** are indicated.

Contents

Description	Page	Description	Page
Engine and Clutch Assembly	3	Carrier Frame Assembly	15
Clutch Assembly No. 54–3200	4	Electrical Schematic	16
Fuel Tank Assembly	5	Crankcase Assembly	17
Lower Control Assembly	6	Oil Pan and Lubrication Assembly	18
Transmission and Drive System Assembly	7	Cylinder Head, Valves and Breather Assembly	19
Wheel Drive and Brake System Assembly	8	Ignition and Electrical Assembly	20
Handle Assembly	9	Blower Housing And Baffles Assembly	21
Control Panel Assembly	10	Starter Assembly	22
Deck Assembly	11	Fuel System Assembly	23
Spindle, Idler Pulley and Belt Assembly	12	Engine Controls Assembly	24
Spindle Housing Assembly No. 104–6316	13	Air Cleaner Assembly	25
Spindle Housing Assembly No. 104–6314	14	Exhaust Assembly	26

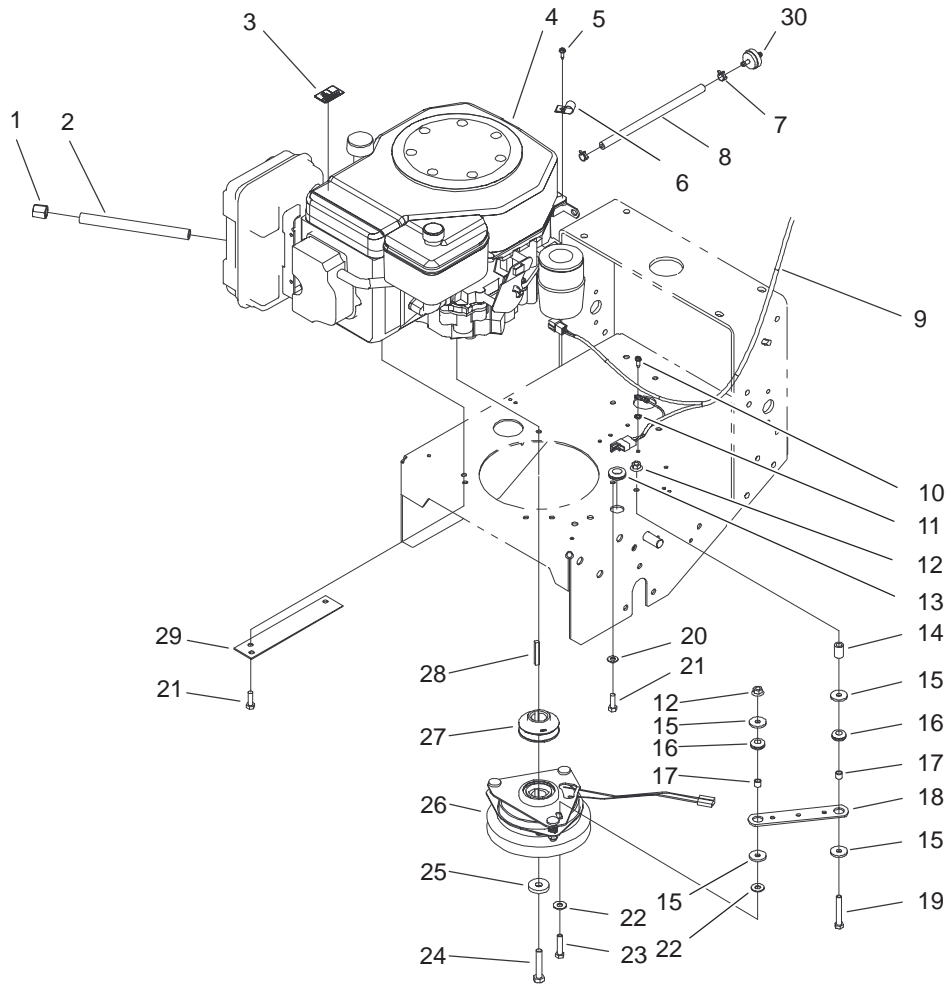
Accessories

Description	Model / Part No.	Description	Model / Part No.
Midsize Sulky	30123	44in Deck Recycler Kit	59220
ProLine Midsize Platform Sulky	30110	Z Revcycler Kit	592260
Hourmeter Kit	105–2695	Atomic Blade ASM	104–1300
36/44/52/62in Soft Bagger F/D	30104	High Sail Blade	55–4940
36/44/52/62in Steel Bagger F/D	30107	Recycler Blade	92–7952
44/52in Striping Kit	30121		

Part Description Abbreviations

Part descriptions in this catalog may include the following abbreviations.

Abbreviation	Meaning	Abbreviation	Meaning
AR	as required	HYD	hydraulic
ASM	assembly	INC	incorporated
CARR	carriage	LH	left hand
DEG	degrees	NI	nylon insert
FH	flat head	PPH	Phillips pan head
GA	gauge	PTH	Phillips truss head
HF	hex flange	PTO	power take off
HH	hex head	RH	right hand
HHF	hex head flange	SFH	slotted fillister head
HLH	hex lag head	SHH	slotted hex head
HJ	hex jam	SQH	square head
HOC	height-of-cut	SHWH	slotted hex washer head
HS	hex socket	SPH	slotted pan head
HSBH	hex socket button head	SRH	slotted round head
HSFH	hex socket flat head	STD	standard
HSH	hex socket head	TAP	self tapping
HWH	hex washer head	TTH	Torx truss head
HWHTF	hex washer head thread forming	WH	wing head

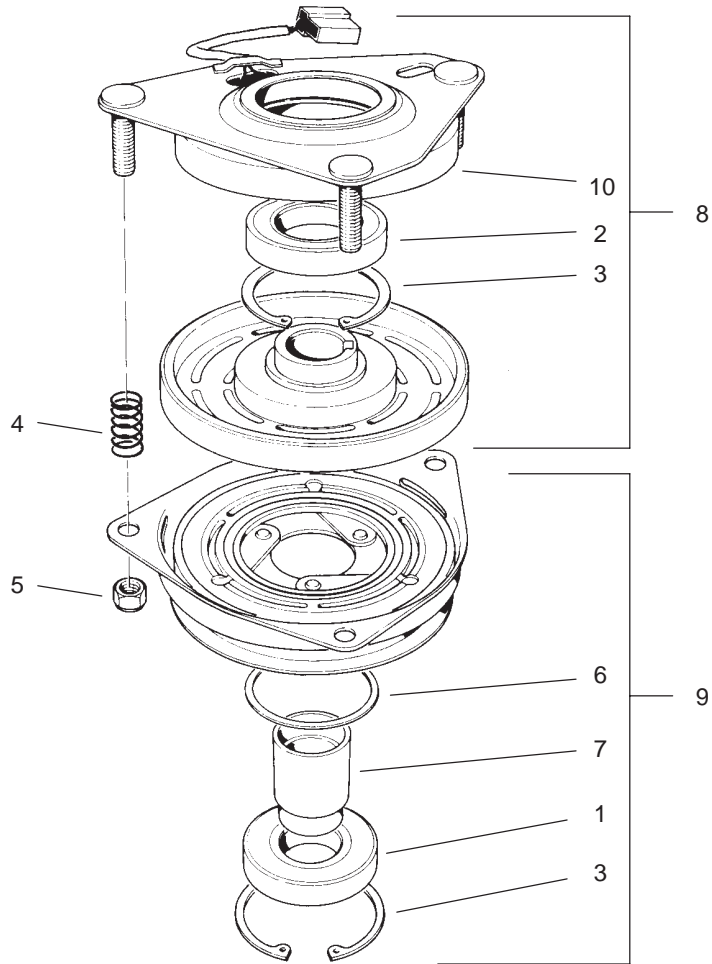


Sheet No.: 3

Engine and Clutch Assembly

Ref. No.	Part No.	Qty.	Description
1	288-10	1	Cap-Pipe
2	105-2624	1	Pipe-Nipple
3	63-8440	1	Decal-Surface, Hot
4		1	Engine-Kohler, Cv15t-41604
5	32144-19	1	Screw-Forming, Thread
6	2412-87	1	Clamp-Cable
7	2412-98	2	Clamp
8	47-2982	1	Hose-Gas
9	104-8136	1	Harness-Wire
10	12-3270	1	Screw
11	3255-7	1	Washer-Lock/Ext
12	32128-20	2	Nut-HF
13	237-124	1	Grommet
14	104-6373	1	Tube-Retainer
15	1-613235	4	Washer
16	1-633630	2	Grommet-Brake
17	1-633545	2	Spacer-Grommet
18	1-633543	1	Strap-Clutch/Brake
19	322-11	1	Screw-HH
20	3256-23	2	Washer-Flat
21	33114-025	4	Screw-HH
22	3256-3	2	Washer-Flat
23	322-7	1	Screw-HH
24	3212-9	1	Screw-HH

Ref. No.	Part No.	Qty.	Description
25	112843	1	Washer
26	54-3200	1	Clutch/Brake
27	105-0827	1	Pulley-Drive
28	608006	1	Key
29	94-5847-01	1	Cover-Pulley
30	56-6360	1	Filter-Fuel

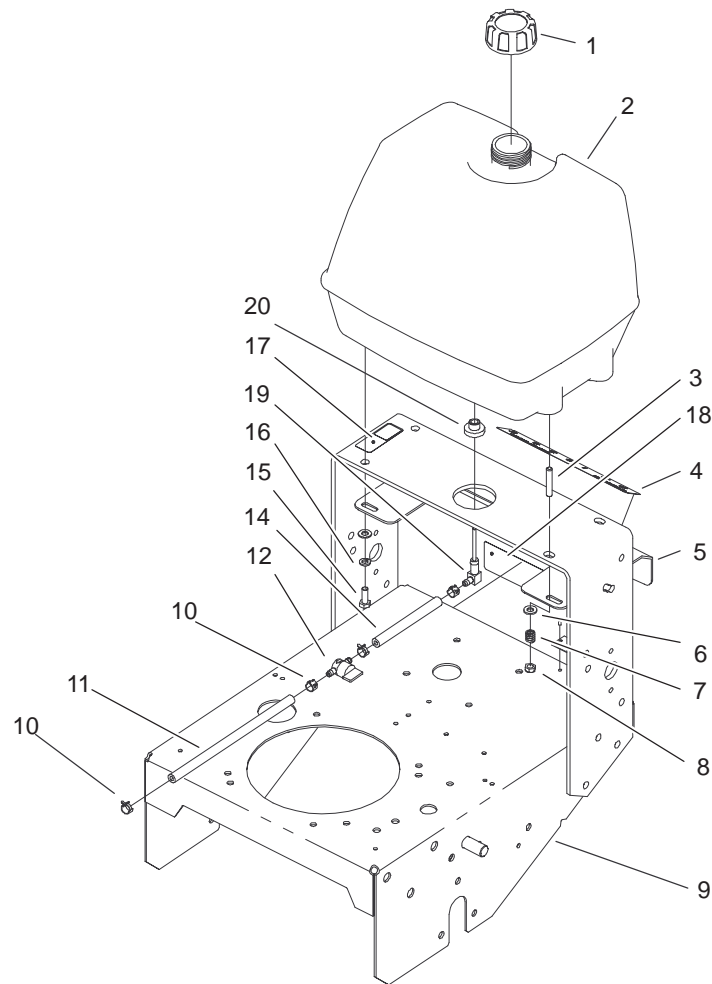


Sheet No.: A1
T-3726

Clutch Assembly No. 54-3200

Ref. No.	Part No.	Qty.	Description
1	251-291	1	Bearing-Pulley
2	251-292	1	Bearing-Field
3	44-8310	2	Ring-Retaining
4	44-8320	3	Spring
5	3296-6	3	Nut-Lock, NI
6	44-8330	1	Spacer-Bearing, Pulley
7	44-8340	1	Collar-Bearing
8	44-8360	1	Field Coil, Rotor, Bearing ASM
9	44-8370	1	Armature Pulley Bearing ASM
10	54-0230	1	Field Bearing ASM

Ref. No.	Part No.	Qty.	Description

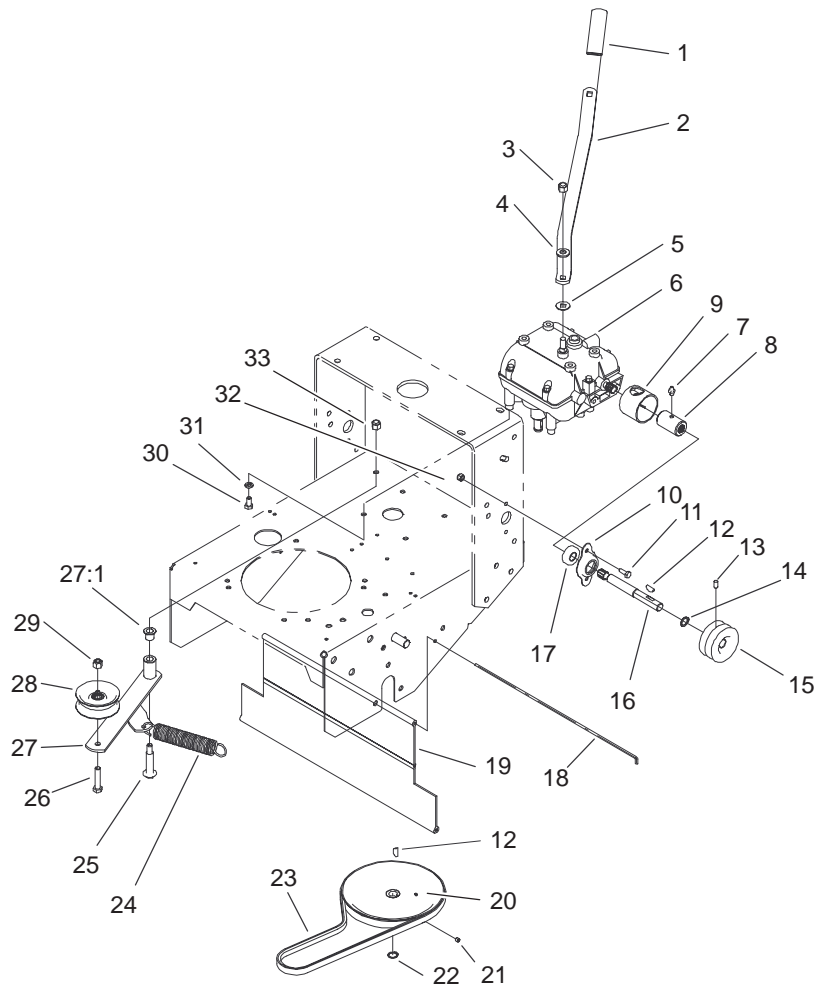


Sheet No.: 5

Fuel Tank Assembly

Ref. No.	Part No.	Qty.	Description
1	55-3570	1	Gas Cap ASM
2	1-323551	1	Tank-Fuel
3	104-8121	2	Stud-Threaded
4	98-3256	1	Decal-Speed, Ground
5	104-8102-01	1	Plate-Gate, Shift
6	3256-23	4	Washer-Flat
7	1-633349	2	Spring-Tank, Fuel
8	3296-47	2	Nut-Lock, NI
9	105-4666-01	1	Traction Frame ASM
10	2412-98	4	Clamp
11	47-2982	1	Hose-Gas
12	1-603770	1	Valve-Fuel
14	47-2966	1	Hose-Gas
15	322-4	2	Screw-HH
16	3253-4	2	Washer-Lock
17	95-2814	1	Decal-Shut Off, Fuel
18	98-0776	1	Decal-Caution
19	1-543277	1	Elbow-Tank, Fuel
20	1-513645	1	Bushing-Valve, Fuel

Ref. No.	Part No.	Qty.	Description

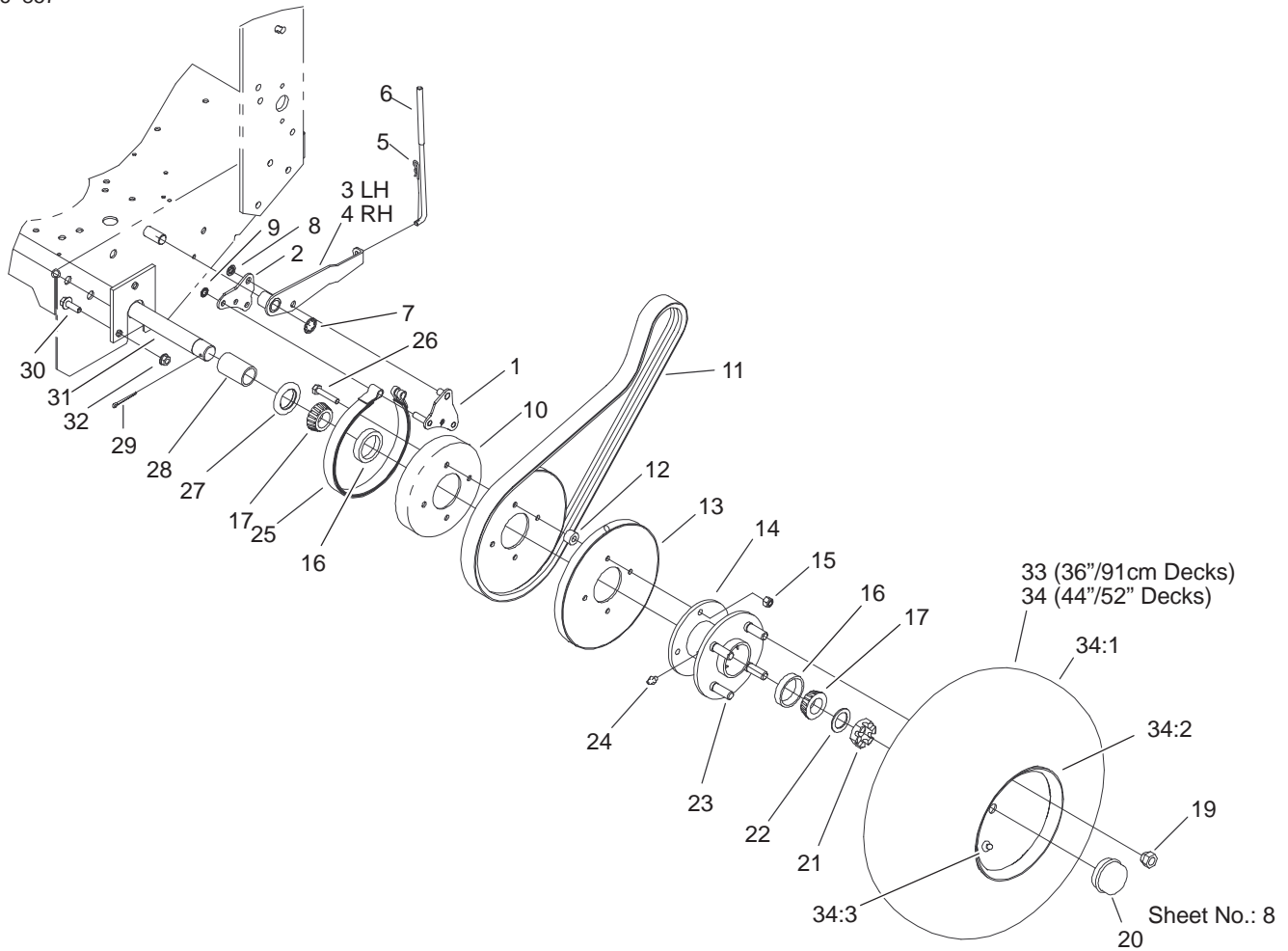


Sheet No.: 7

Transmission and Drive System Assembly

Ref. No.	Part No.	Qty.	Description
1	47-1970	1	Grip
2	98-3274-03	1	Lever-Shift
3	3296-6	1	Nut-Lock, NI
4	98-5975	1	Washer-Belleville
5	1-323379	1	Washer-Lever, Shifter
6	1-323500	1	Transmission
7	302-5	2	Fitting-Grease
8	98-0789	2	Coupler
9	51-4220	2	Guard-Coupler
10	1-323254	2	Flange-Output
11	321-4	4	Screw-HH
12	3257-5	3	Key-Woodruff
13	3245-9	2	Screw-Set
14	32151-62	2	Ring-Retaining
15	105-0828	2	Pulley-Transmission
16	104-1102	2	Shaft-Output
17	1-323252	2	Bearing-Shaft
18	95-1529	1	Rod-Shield
19	95-1526	1	Shield-Trailing
20	51-4190	1	Pulley-Driven
21	3245-1	1	Screw-Set, HSH
22	32120-64	1	Ring-Snap, External
23	26-9671	1	V-Belt
24	68-2190	1	Spring
25	27-6230	1	Bolt-Wheel
26	323-9	1	Screw-HH

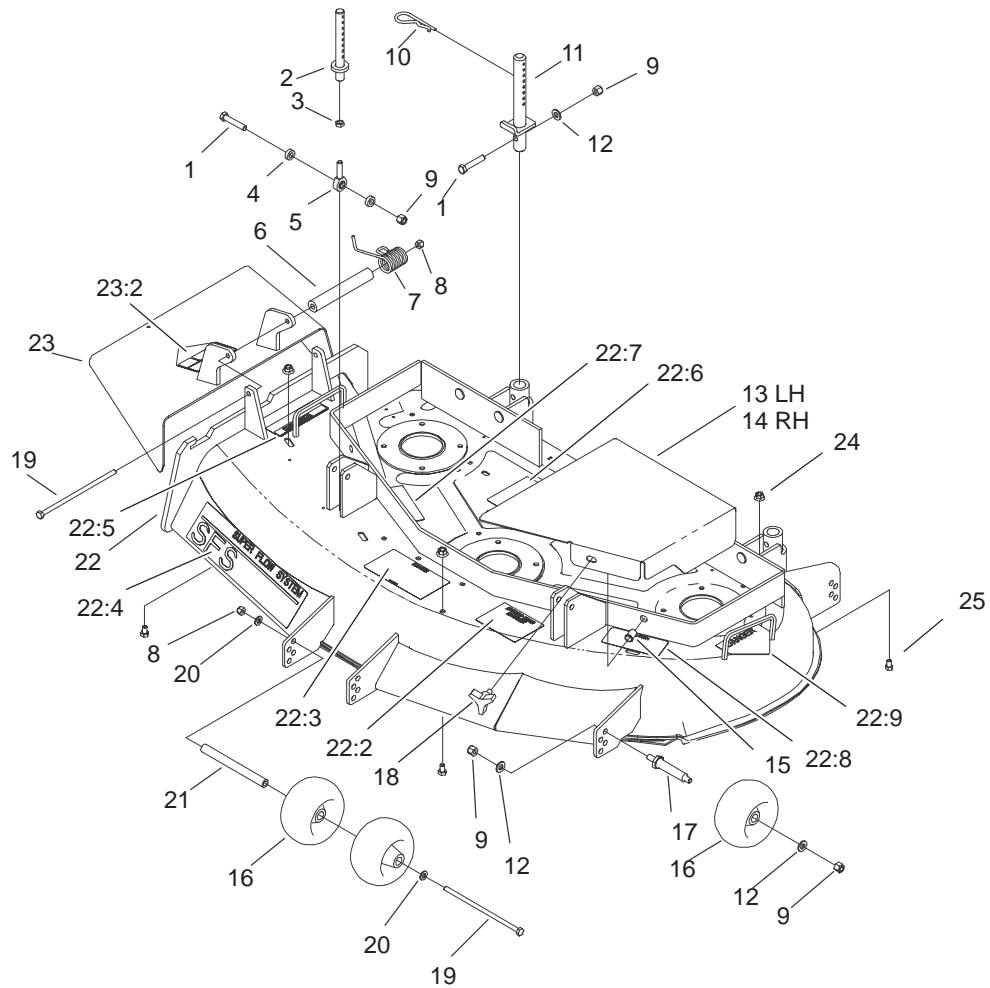
Ref. No.	Part No.	Qty.	Description
27	16-7509	1	Lever-Idler
27:1	256-155	2	Bushing-Flange
28	62-4540	1	Pulley
29	3296-39	1	Nut-Lock, NI
30	322-2	4	Screw-HH
31	3253-4	4	Washer-Lock
32	3296-42	4	Nut-Lock, NI
33	3296-6	1	Nut-Lock, NI



Wheel Drive and Brake System Assembly

Ref. No.	Part No.	Qty.	Description
1	105-4652-01	2	Brake Link ASM
2	105-4651-01	2	Plate-Link, Brake
3	105-4667-01	1	LH Brake Arm ASM
4	105-4668-01	1	RH Brake Arm ASM
5	3290-307	2	Pin-Hair
6	51-4580	2	Rod-Brake
7	32151-40	2	Ring-Retaining
8	32151-56	2	Ring-Retaining, External
9	32151-72	4	Ring-Retaining
10	1-323261	2	Drum-Brake
11	104-8152	2	Belt-Drive, Traction
12	51-4170	8	Spacer-Pulley
13	51-4160-03	4	Pulley-Wheel
14	1-413333	2	Hub-Wheel W/Cups
15	3296-29	8	Nut-Lock, NI
16	254-72	4	Bearing-Cup, Tapered
17	254-94	4	Bearing-Cone, Taper
19	242-50	8	Nut-Lug
20	241-119	2	Cap-Dust
21	1-809082	2	Nut-SHH
22	1-523157	2	Washer-Spacer
23	1-633926	8	Stud-Wheel
24	302-19	2	Fitting-Grease
25	1-323262	2	Band-Brake
26	322-8	8	Screw-HH

Ref. No.	Part No.	Qty.	Description
27	1-543511	2	Seal-Grease
28	104-1197	2	Spacer-Wheel
29	1-806800	2	Pin-Cotter
30	3234-11	6	Screw-HHF
31	104-1196-01	1	Axle ASM
32	32128-21	6	Nut-HF
33	104-6321	2	Wheel And Tire ASM
34	104-1198	2	Wheel And Tire ASM
34:1	104-6320	1	Tire
34:2	104-1199	1	Wheel
34:3	232-27	1	Stem-Valve

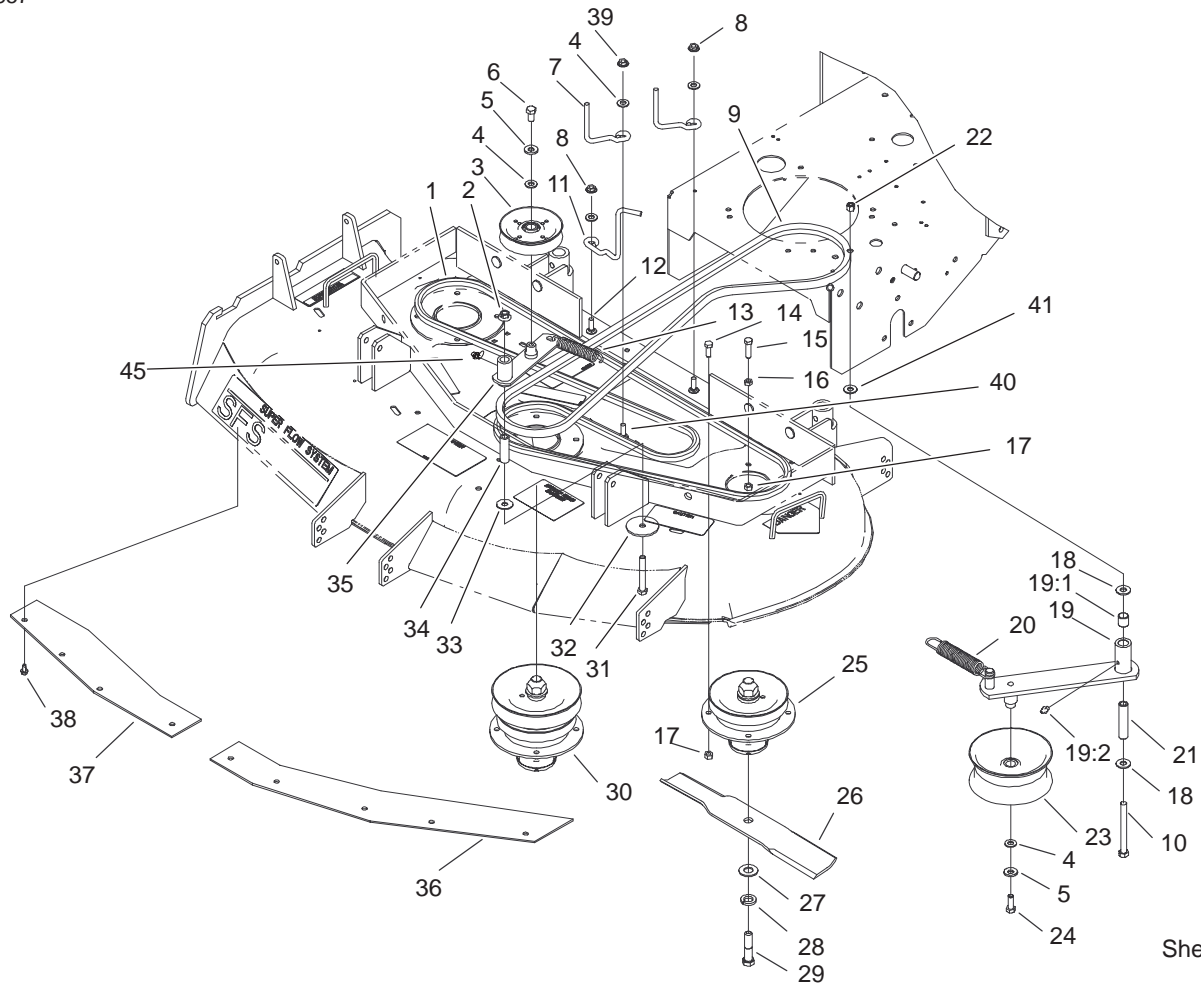


Sheet No.: 2

Deck Assembly

Ref. No.	Part No.	Qty.	Description	Ref. No.	Part No.	Qty.	Description
1	323-10	4	Screw-HH	22:5	104-8569	1	Decal-Warning, Deflector
2	105-0832	2	Link-Support	22:6	104-8186	1	Decal-Routing, Belt
3	3220-3	2	Nut-Jam	22:7	67-5360	3	Decal-Danger
4	104-1156	4	Spacer	22:8	68-8340	1	Decal-Torque
5	1-613204	2	Balljoint	22:9	43-8480	1	Decal-Danger
6	104-8555	1	Spacer-Mounting, Deflector	23	104-7783	1	Deflector ASM
7	104-8554	1	Spring-Torsion	23:2	54-9220	1	Decal-Danger
8	3296-29	2	Nut-Lock, NI	24	32128-20	3	Nut-HF
9	3296-39	8	Nut-Lock, NI	25	322-1	3	Screw-HH
10	3290-256	6	Pin-Hair				
11	105-0831	2	Rod ASM				
12	3256-24	6	Washer-Flat				
13	104-8117-01	1	Cover-Belt, Left				
14	104-8118-01	1	Cover-Belt, Right				
15	32148-10	2	Insert-Threaded				
16	68-2730	4	Wheel-Gage				
17	99-2842	2	Spacer-Wheel				
18	104-8587	2	Knob				
19	322-50	2	Screw-Cap				
20	3256-23	2	Washer-Flat				
21	98-5967	1	Spacer-Wheel				
22	104-6392	1	44" Deck ASM				
22:2	105-0840	1	Decal-Scalp, Anti				
22:3	66-1340	1	Decal-Danger				
22:4	98-8028	1	Decal-Sfs				

* Not illustrated

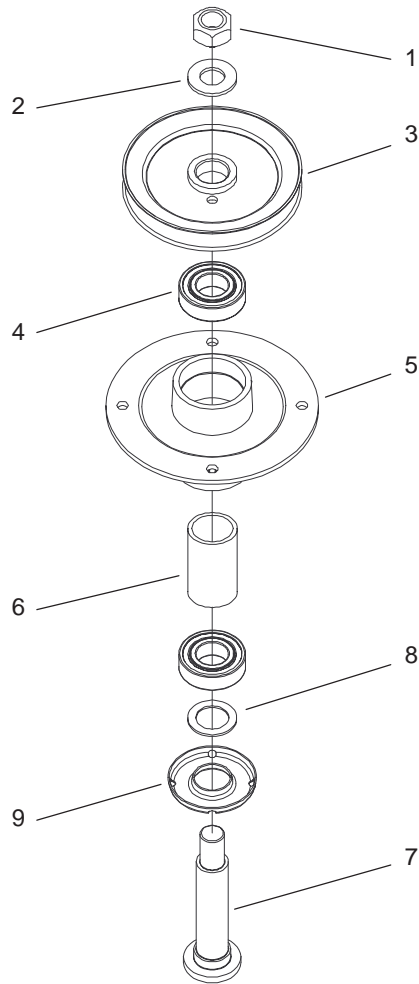


Sheet No.: 3

Spindle, Idler Pulley and Belt Assembly

Ref. No.	Part No.	Qty.	Description
1	27-1160	1	V-Belt, Deck
2	32128-19	1	Nut-HF
3	65-5940	1	Pulley-Idler
4	3256-24	5	Washer-Flat
5	98-5975	2	Washer-Belleville
6	323-4	1	Screw-HH
7	52-4780	2	Rod-Belt
8	32128-13	2	Nut-HF
9	104-8120	1	V-Belt, PTO
10	323-42	1	Screw-HH
11	105-0852	1	Guide-Belt
12	3230-2	2	Screw-CARR
13	54-2730-03	1	Spring-Extension
14	322-4	11	Screw-HH
15	322-6	1	Screw-HH
16	3218-2	1	Nut-Jam
17	32152-1	12	Nut-Lock, NI
18	1-809107	2	Washer-Hardened
19	104-6370	1	Idler Arm ASM
19:1	1-513034	2	Sleeve-Bearing
19:2	302-5	1	Fitting-Grease
20	104-8161	1	Spring-Extension
21	104-6377	1	Tube-Idler
22	3296-39	1	Nut-Lock, NI
23	1-413099	1	Pulley-Idler
24	323-6	1	Screw-HH

Ref. No.	Part No.	Qty.	Description
25	104-6316	2	Spindle Housing ASM
26	54-0010	3	Blade
27	3256-27	3	Washer-Flat
28	3253-8	3	Washer-Lock
29	51-4060	3	Screw-Blade
30	104-6314	1	Spindle Housing ASM
31	323-13	1	Screw-HH
32	20-9530	1	Washer-End
33	52-2860	1	Washer
34	104-8113	1	Tube-Idler
35	104-8110	1	Idler Arm ASM
36	100-3258-03	1	Plate-Blowout, LH
37	100-3257-03	1	Plate-Blowout, RH
38	12-3270	9	Screw
39	32128-10	1	Locknut-Flange
40	3229-4	1	Screw-CARR
41	3256-4	1	Washer-Flat
45	302-19	1	Fitting-Grease

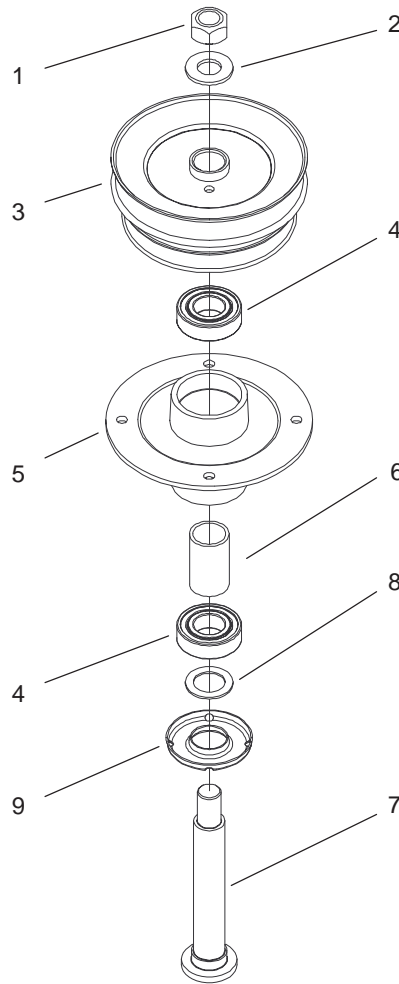


Sheet No.: A1
C_3014

Spindle Housing Assembly No. 104-6316

Ref. No.	Part No.	Qty.	Description
1	3219-7	1	Nut-Hex
2	7-4150	1	Washer-Pinion
3	104-1181	1	Pulley ASM
4	104-6325	2	Bearing
5	67-7590	1	Housing-Spindle
6	104-6312	1	Spacer-Bearing
7	104-8193	1	Shaft-Spindle
8	88-7540	1	Washer-Backup
9	79-1920	1	Shield-Bearing

Ref. No.	Part No.	Qty.	Description

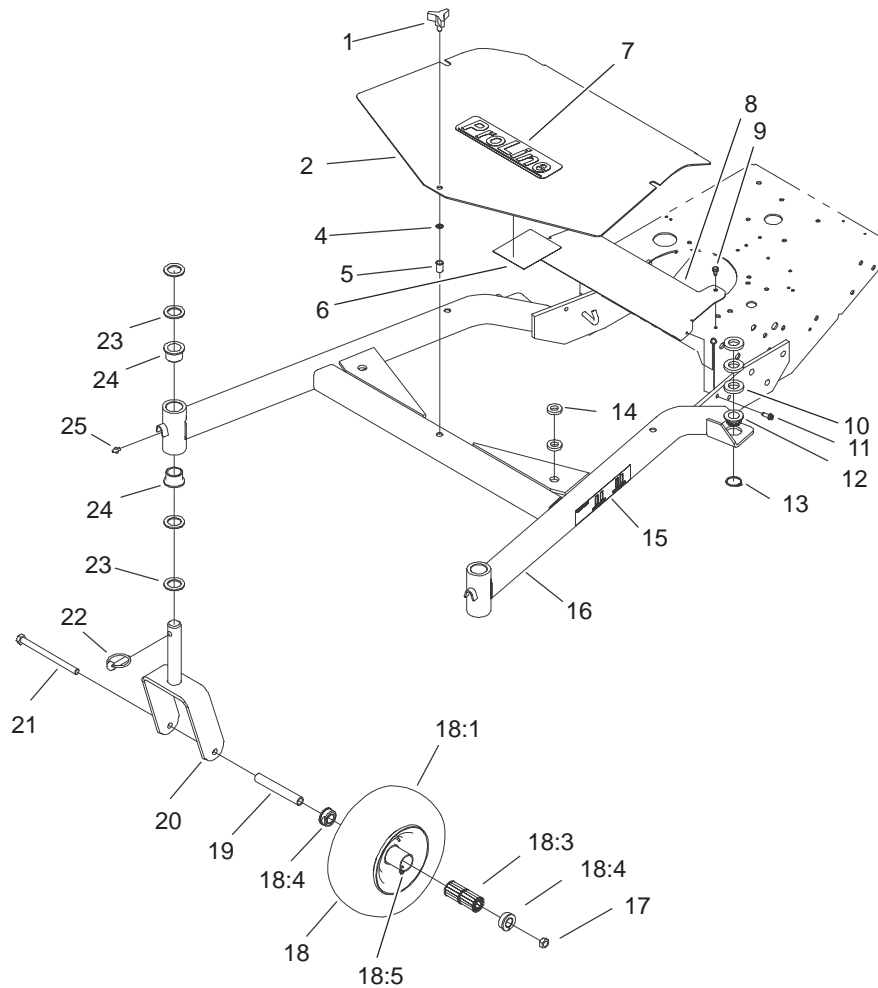


Sheet No.: A2
C-3013

Spindle Housing Assembly No. 104-6314

Ref. No.	Part No.	Qty.	Description
1	3219-7	1	Nut-Hex
2	7-4150	1	Washer-Pinion
3	104-1116	1	Pulley And Hub ASM
4	104-6325	2	Bearing
5	67-7590	1	Housing-Spindle
6	104-6312	1	Spacer-Bearing
7	104-8194	1	Shaft-Spindle
8	88-7540	1	Washer-Backup
9	79-1920	1	Shield-Bearing

Ref. No.	Part No.	Qty.	Description



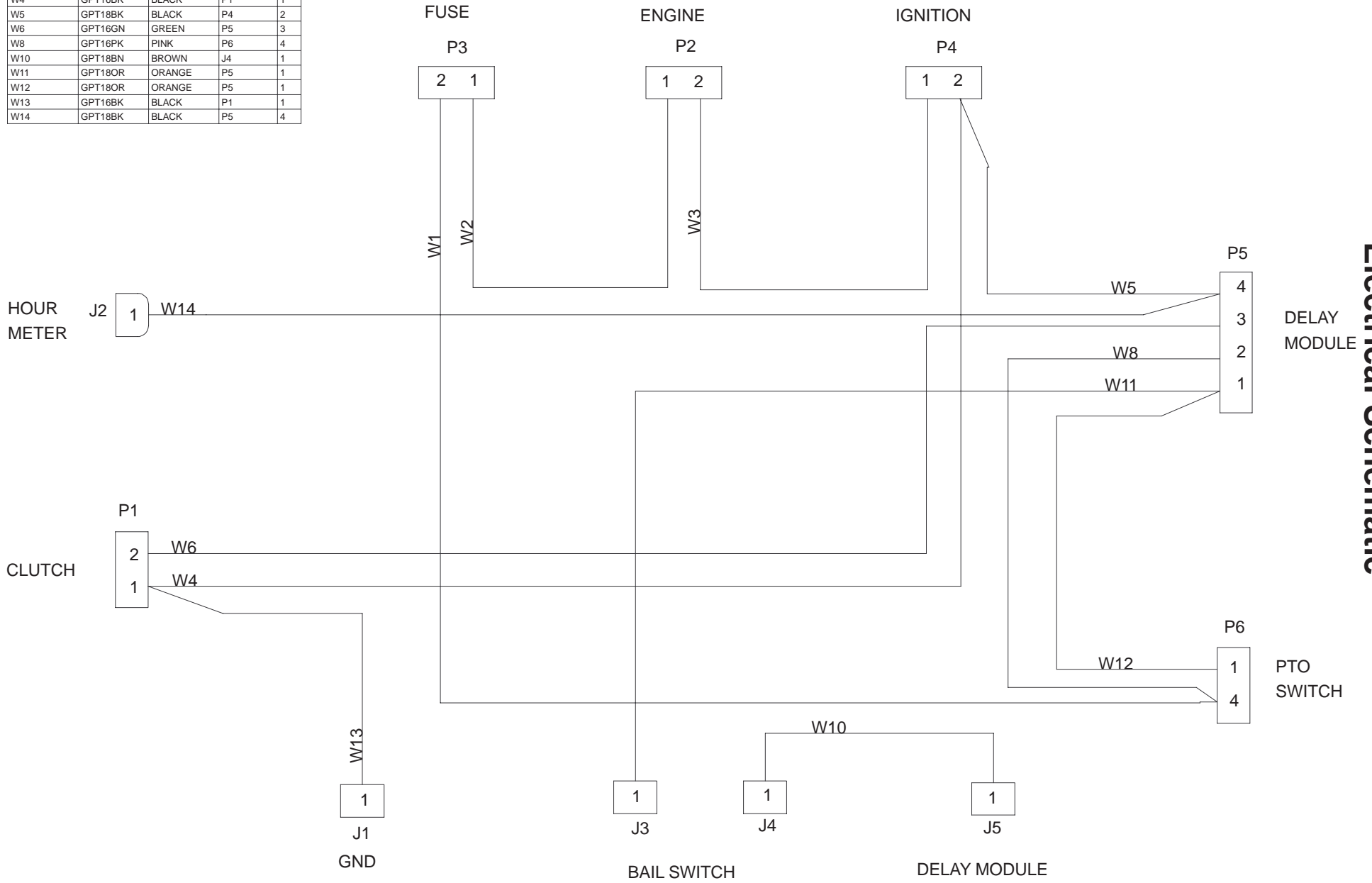
Sheet No.: 4

Carrier Frame Assembly

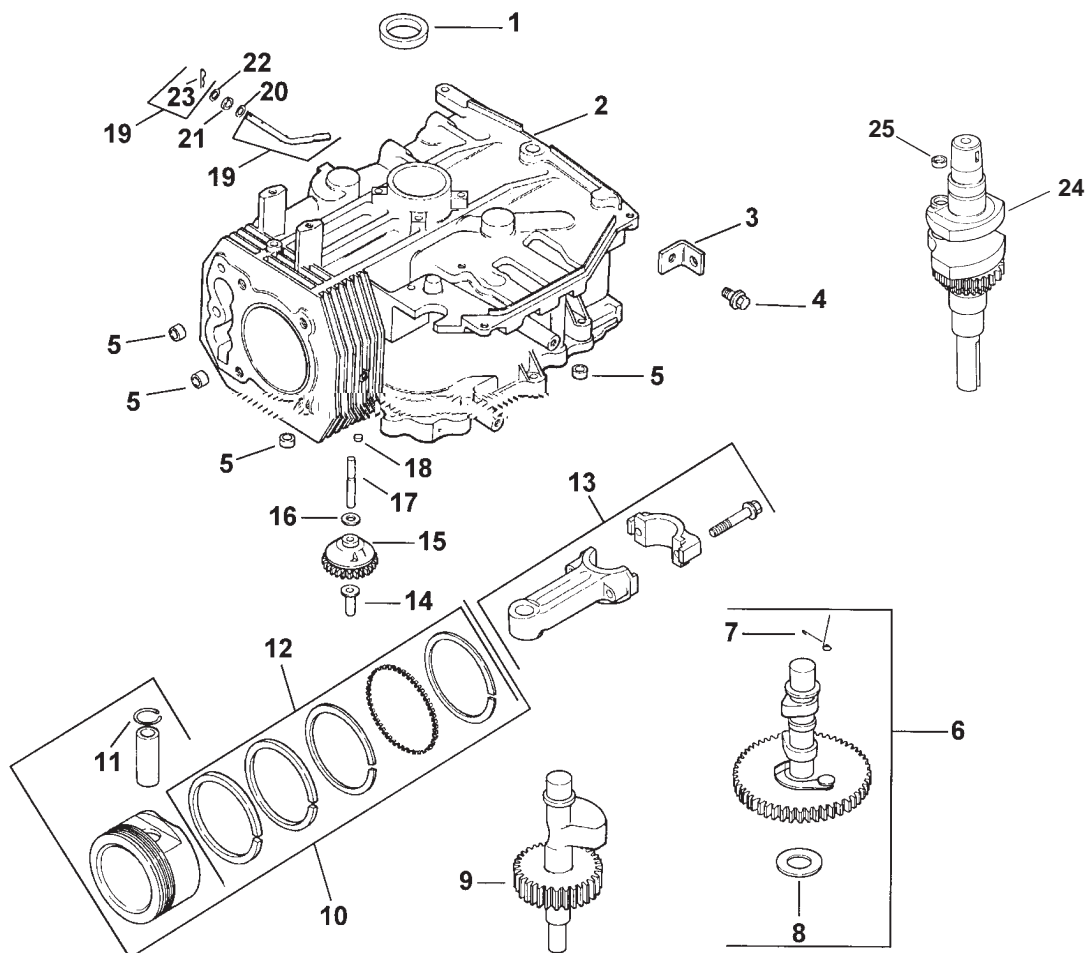
Ref. No.	Part No.	Qty.	Description
1	104-8587	3	Knob
2	104-8153-01	1	Cover-Frame, Carrier
4	32151-72	1	Ring-Retaining
5	32148-9	3	Insert-Nut
6	104-8173	1	Decal-Service, Hydro
6	104-8175	1	Decal-Service, Gear
7	74-2080	1	Decal-Proline
8	105-0845-01	1	Shield-Heat
9	12-3270	2	Screw
10	104-1105	6	Spacer-Support, Deck
11	49-2040	2	Screw-Tapping
12	1-513336	2	Bushing-Deck
13	32120-33	2	Ring-Retaining
14	105-0842	4	Spacer
15	104-8171	2	Decal-HOC
16	104-1109-01	1	Carrier Frame ASM
17	32153-5	2	Nut-Lock
18	104-1170	2	Castor Wheel ASM
18:1	104-1169	1	Tire And Tube ASM
18:3	62-5570	2	Bearing-Roller
18:4	62-5580	2	Bearing-Outside
18:5	302-11	1	Fitting-Lube, 45°
19	104-1189	2	Bushing-Spanner
20	104-1183-01	2	Castor Fork ASM
21	325-33	2	Screw-HH
22	283-71	2	Pin-Lynch

Ref. No.	Part No.	Qty.	Description
23	3-6781	8	Washer-Thrust
24	94-1291	4	Bushing-Special
25	302-5	2	Fitting-Grease

Name	AWG	COLOR	Component	Pin
W1	GPT16PK	PINK	P3	2
W2	GPT16PK	PINK	P3	1
W3	GPT16W	WHITE	P2	2
W4	GPT16BK	BLACK	P1	1
W5	GPT18BK	BLACK	P4	2
W6	GPT16GN	GREEN	P5	3
W8	GPT16PK	PINK	P6	4
W10	GPT18BN	BROWN	J4	1
W11	GPT18OR	ORANGE	P5	1
W12	GPT18OR	ORANGE	P5	1
W13	GPT16BK	BLACK	P1	1
W14	GPT18BK	BLACK	P5	4



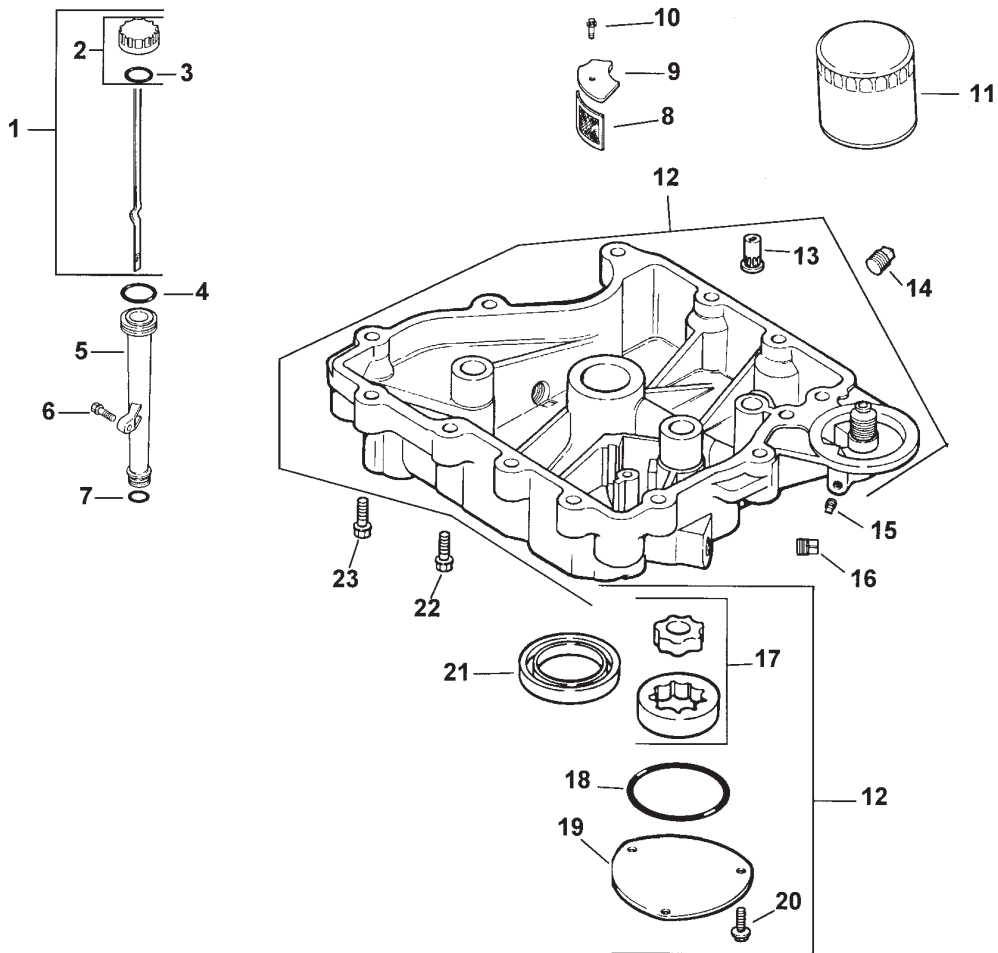
Electrical Schematic



Crankcase Assembly Kohler Model CV15T-41604

Ref. No.	Part No.	Qty.	Description	Ref. No.	Part No.	Qty.	Description
1	12 032 03-S	1	Seal-Crankshaft	13	12 067 05-S	1	Rod-Connecting, STD
2	12 522 18-S	1	Shortblock	13	12 067 06-S	1	Rod-Connecting .25
3	12 445 02-S	1	Strap-Lifting	14	12 380 01-S	1	Pin-Governor
4	M-839025-S	1	Screw-HF M8x1.25x22				Regulating
5	24 380 13-S	4	Dowel-Locating	15	12 043 05-S	1	Gear-Governor
6	12 755 49-S	1	Kit-Camshaft (Incl.7-8)	16	M-631005-S	1	Washer-Plain, 6mm
7	12 089 31-S	1	Spring-Actuating	17	12 144 02-S	1	Shaft-Governor Gear
8	12 422 07-S	A/R	Shim-Camshaft, White	18	52 139 09-S	1	Plug-Cup
8	12 422 08-S	1	Shim-Camshaft, Blue	19	12 755 64-S	1	Kit-Governor Cross
8	12 422 09-S	A/R	Shim-Camshaft, Red				Shaft (Incl. 23)
8	12 422 10-S	A/R	Shim-Camshaft, Yellow	20	X-25-102-S	1	Washer-Plain, 1/4
8	12 422 11-S	A/R	Shim-Camshaft, Green	21	12 032 01-S	1	Seal-Governor Cross
8	12 422 12-S	A/R	Shim-Camshaft, Gray				Shaft
8	12 422 13-S	A/R	Shim-Camshaft, Black	22	M-631015-S	1	Washer-Plain, 6mm
9	12 144 27-S	1	Shaft-Balance	23	12 154 05-S	1	Clip-Hitch Pin
10	12 874 07-S	1	Piston w/Ring Set STD (Incl. 11,12)	24	12 014 30-S	1	Crankshaft ASM (Incl. 25)
10	12 874 08-S	1	Set-Piston w/Ring .25	25	12 139 01-S	1	Plug-Cup
10	12 874 09-S	1	Set-Piston w/Ring .50	*	12 755 93-S	1	Set-Gasket
10	12 874 11-S	1	Set-Piston w/Ring .08				
11	12 018 02-S	2	Retainer-Piston Pin				
12	12 108 07-S	1	Ring Set STD				
12	12 108 08-S	1	Ring Set .25				
12	12 108 09-S	1	Ring Set .50				

* Not illustrated
Order Parts From Kohler

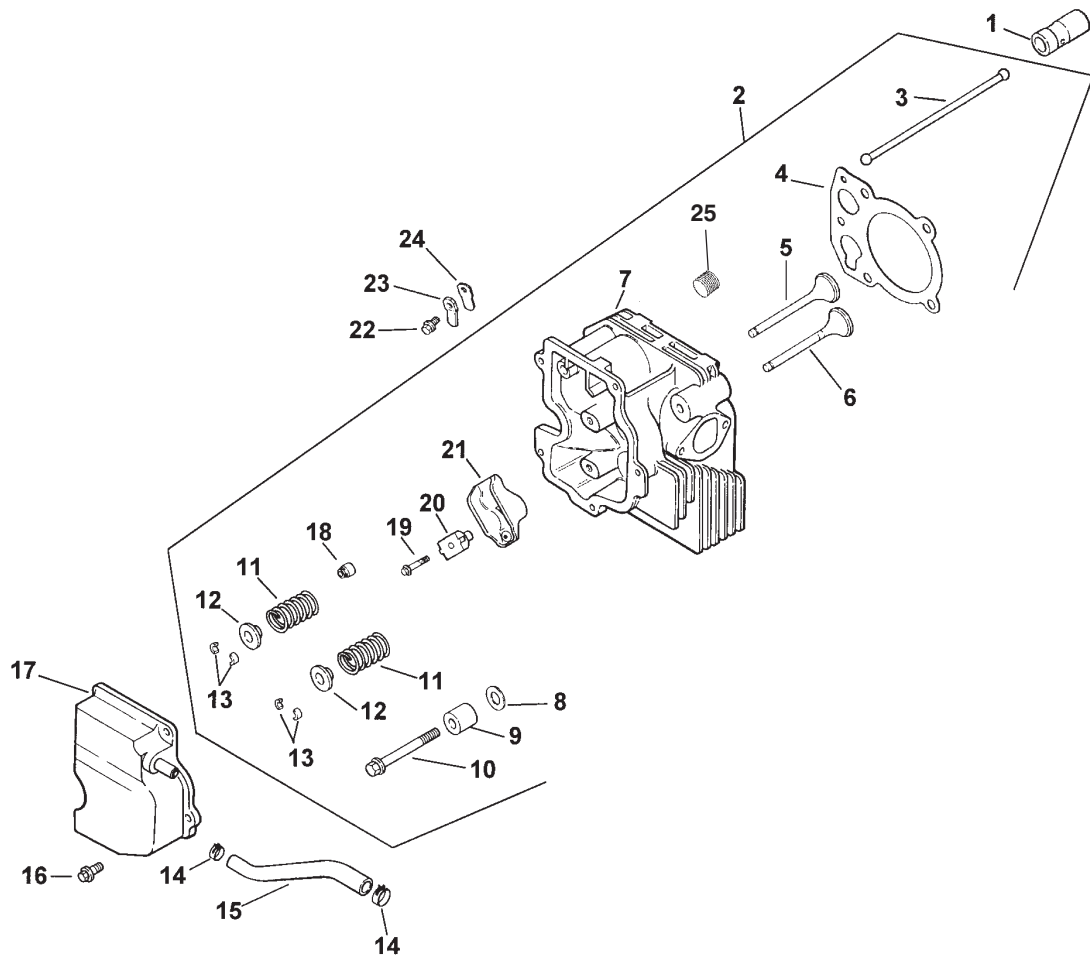


Oil Pan and Lubrication Assembly Kohler Model CV15T-41604

Ref. No.	Part No.	Qty.	Description
1	12 038 01-S	1	Dipstick ASM(Incl. 2-3)
2	25 755 13-S	1	Kit-Oil Fill Cap (Incl. 3)
3	12 153 03-S	1	O Ring-Dipstick
4	12 153 02-S	1	O Ring-Upper Oil Fill Tube
5	12 123 04-S	1	Tube-Oil Fill
6	M-545020-S	1	Screw-HF, M5x0.8x20
7	12 153 01-S	1	O Ring-Lower Oil Fill Tube
8	25 162 07-S	1	Screen-Oil Pickup
9	12 096 03-S	1	Cover-Oil Pickup Screen
10	M-545016-S	1	Screw-HF, M5x0.8x16
11	52 050 02-S	1	Filter-Oil
12	12 199 50-S	1	Pan ASM - Oil (Incl.13, 17-20)
13	25 462 09-S	1	Valve-Oil Pressure Relief
14	25 139 57-S	1	Plug-Pipe, 3/8 SH
15	25 139 52-S	1	Plug-Pipe, 1/8
16	25 139 62-S	1	Plug-Pipe, 3/8 HSH
17	12 393 01-S	1	Pump-Oil
18	12 153 06-S	1	O Ring-Oil Pump Cover

Ref. No.	Part No.	Qty.	Description
19	12 096 34-S	1	Cover-Oil Pump
20	M-545016-S	3	Screw-HF, M5x0.8x16
21	12 032 03-S	1	Seal-Oil (PTO End)
22	24 086 16-S	11	Screw-HF, M8x1.25x45
23	24 086 17-S	1	Screw-HF, M8x1.25x45

Order Parts From Kohler

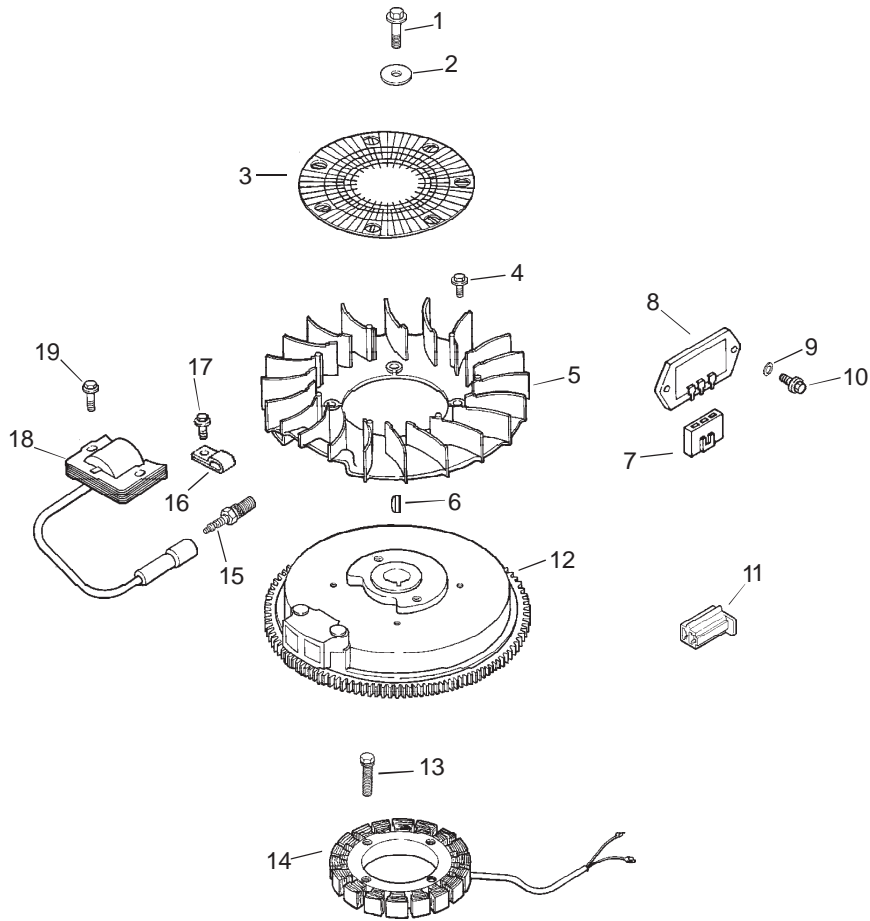


Cylinder Head, Valves And Breather Assembly Kohler Model CV15T-41604

Ref. No.	Part No.	Qty.	Description
1	12 351 01-S	2	Lifter-Valve
2	12 755 81-S	1	Kit-Cylinder Head (Incl. 3-13, 18-21, 25, Carburator Gasket 12 041 01-S(2), Exhaust Manifold Gasket 12 041 03-S, Air Cleaner Gasket 12 041 02-S)
3	12 411 01-S	2	Rod-Push
4	12 041 10-S	1	Gasket-Cylinder Head
5	12 017 01-S	1	Valve-Intake STD
5	12 017 02-S	1	Valve-Intake .25
6	12 016 01-S	1	Valve-Exhaust STD
6	12 016 02-S	1	Valve-Exhaust, .25
7	12 318 19-S	1	Head - Cylinder
8	12 468 05-S	1	Washer-Plain 13/32
9	12 112 13-S	1	Spacer-Head Bolt Exhaust Port
10	12 086 15-S	5	Screw-HF M10x1.5x81
11	12 089 01-S	2	Spring-Valve
12	12 173 01-S	2	Cap-Valve Spring
13	12 755 03-S	2	Kit-Retainer
14	25 237 14-S	2	Clamp-Hose

Ref. No.	Part No.	Qty.	Description
15	12 326 03-S	1	Hose-Breather
16	M-645020-S	3	Screw-HF M6x1.0x20
17	12 096 07-S	1	Cover-Valve w/Nipple
18	24 032 05-S	1	Seal-Valve Stem
19	M-640034-S	2	Screw-HF M6x1.0x34
20	12 599 03-S	2	Pivot-Rocker Arm
21	25 186 01-S	2	Arm-Rocker
22	M-545010-S	1	Screw-HF M5x0.8x10
23	12 018 01-S	1	Retainer-Breather Reed
24	12 402 02-S	1	Reed-Breather
25	25 139 60-S	1	Plug-Pipe, HSH 1/8

Order Parts From Kohler

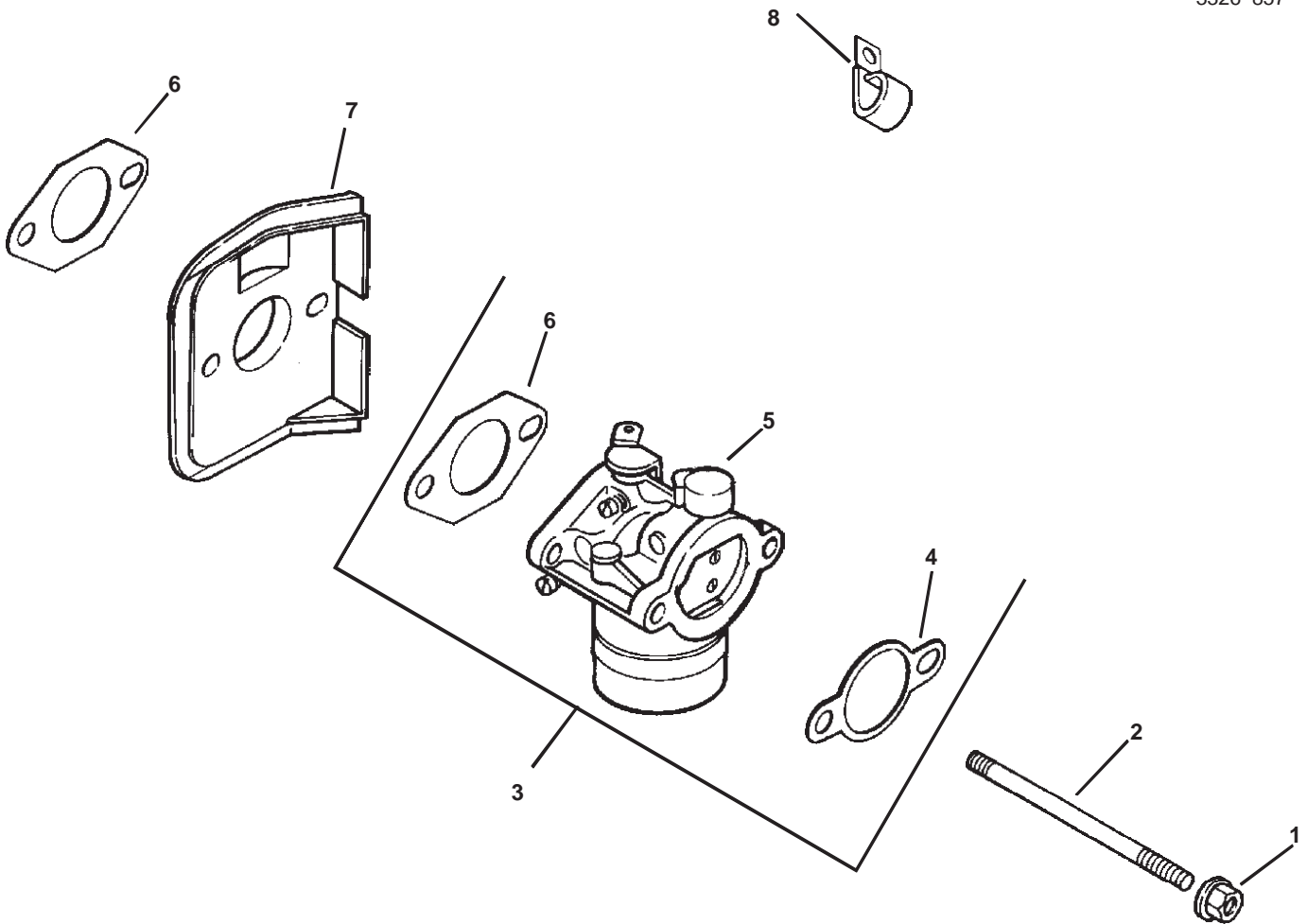


Ignition and Electrical Assembly Kohler Model CV15T-41604

Ref. No.	Part No.	Qty.	Description
1	12 086 14-S	1	Screw-HF,M10x1.5x46
2	12 468 03-S	1	Washer-Plain, 3/8
3	12 162 03-S	1	Screen-Grass
4	25 086 47-S	4	Bolt-Shoulder
5	12 157 03-S	4	Fan
6	X-42-15-S	1	Key
7	236602-S	1	Connector-Rectifier, Regulator(3 contact)
8	12 403 01-S	1	Rectifier-Unregulated, 15 amp
9	X-22-11-S	2	Washer - Lock
10	M-639016-S	2	Screw-HF, M6x1.0x16
11	41 155 03-S	1	Connector
12	12 025 33-S	1	Flywheel
13	M-548025-S	2	Screw-HH M5x0.8x25
14	237878-S	1	Kit-Stator, 15 Amp
15	12 132 06-S	1	Spark Plug
16	X-728-1-S	2	Clip-Cable
17	M-545010-S	2	Screw-HF, M5x0.8x10
18	12 584 05-S	1	Module-Ignition
19	M-545020-S	2	Screw-HF, M5x0.8x20
*	25 518 05-S	1	Lead-Black, Rectifier/Regulator,(5"-14Gauge Uninsulated Push On

Ref. No.	Part No.	Qty.	Description
*	12 518 01-S	1	Tab Terminals) Lead-White, Ground To Kill, (19"-18 Gauge Fully Insulated Push On Tab and Uninsulated Push On Tab Terminals
*	25 518 12-S	1	Lead-Black,Ground, (5"-12Gauge-Insulated Grip Barrel Eyelet Terminals

* Not illustrated
Order Parts From Kohler

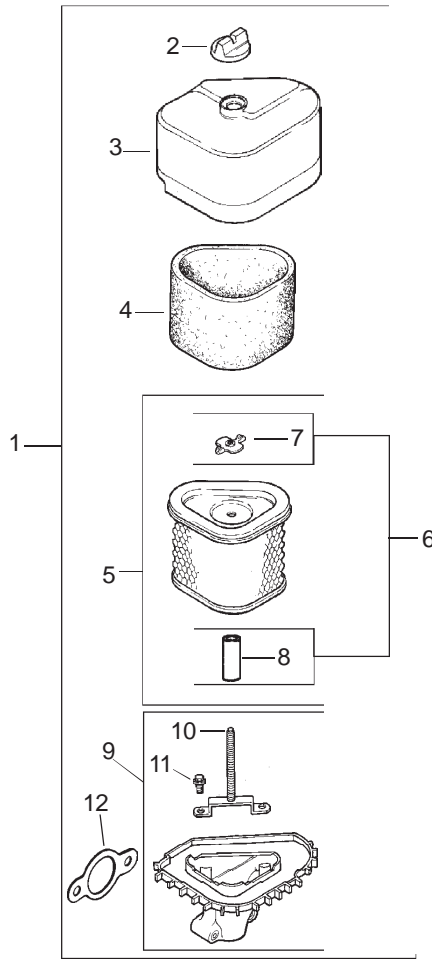


Fuel System Assembly Kohler Model CV15T-41604

Ref. No.	Part No.	Qty.	Description
1	M-641060-S	2	Nut-HF M6x1.0
2	M-629116-S	2	Stud M6x1.0x116
3	12 853 80-S	1	Kit-Carburetor w/Gaskets (Incl. 4-6)
4	12 041 02-S	1	Gasket-Air Cleaner
5	12 053 80	1	Carburetor ASM (For Information Only Not Available Separately) (Service With Kits 12 757 02-S Float Kit 12 757 03-S Carb. Repair Kit and 12 757 08-S Choke Repair Kit)
6	12 041 01-S	2	Gasket-Carburetor
7	12 265 04-S	1	Deflector-Heat
8	47 154 01-S	1	Clip-Cable
*	12 757 02-S	1	Kit-Float
*	12 757 08-S	1	Kit-Choke Repair
*	12 757 03-S	1	Kit-Carburetor Repair

Ref. No.	Part No.	Qty.	Description

* Not illustrated
Order Parts From Kohler

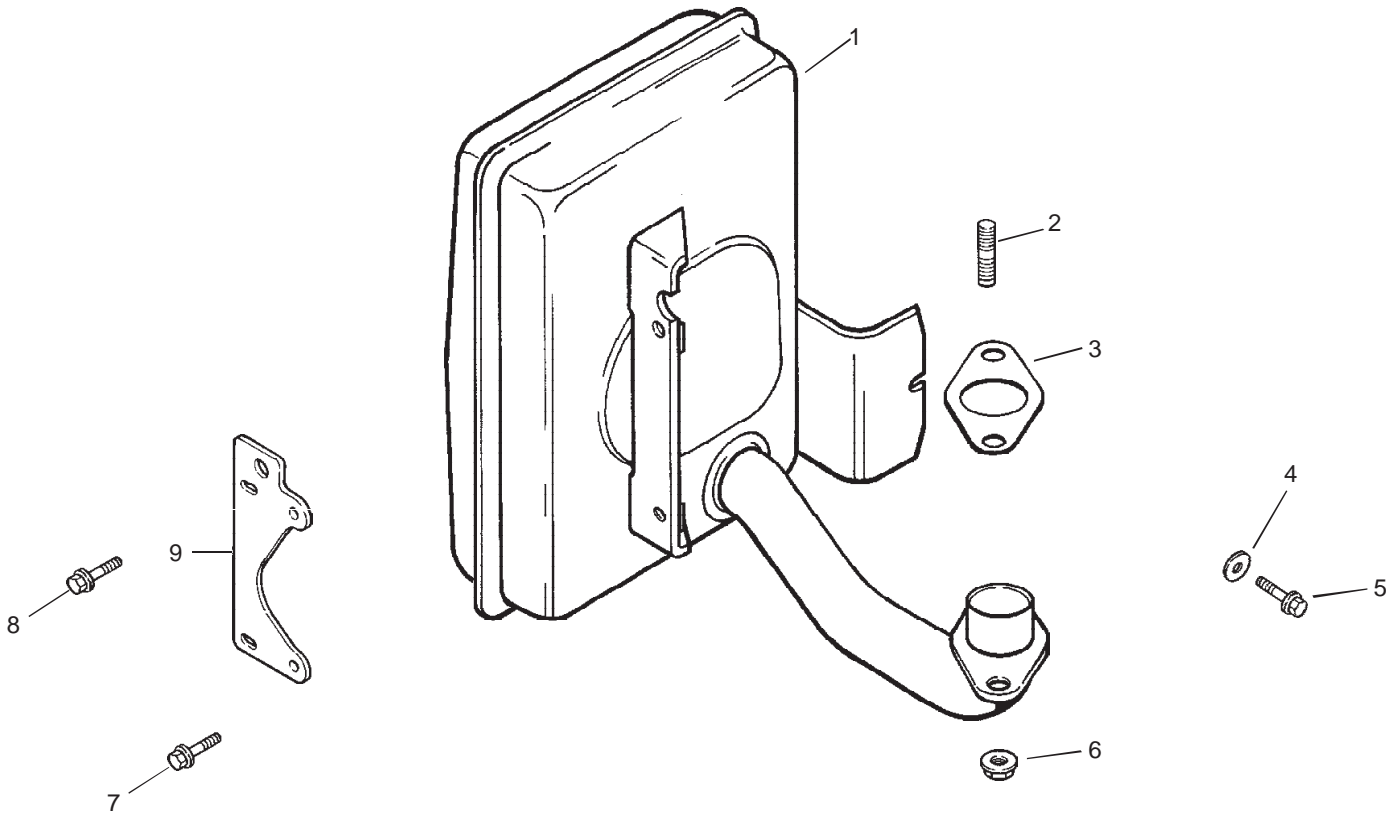


Air Cleaner Assembly Kohler Model CV15T-41604

Ref. No.	Part No.	Qty.	Description
1	12 743 02-S	1	Kit-Air Cleaner (Incl. 2-12)
2	25 341 03-S	1	Knob-Air Cleaner Cover
3	12 096 38-S	1	Cover-Air Cleaner
4	12 083 12-S	1	Element-Precleaner
5	12 083 10-S	1	Element-Air Cleaner (Incl. 6-8)
6	12 743 12-S	1	Kit-Seal (Incl. 7-8)
7	12 100 08-S	1	Nut-Wing
8	12 032 11-S	1	Seal
9	12 094 07-S	1	Base-Air Cleaner (Incl. 10,11)
10	12 072 04-S	1	Stud-M6x1.0x66
11	12 086 01-S	2	Screw-#10 Hi-Lo Thread Forming
12	12 041 02-S	1	Gasket-Air Cleaner
*	12 113 04-S	1	Decal-Air Cleaner

Ref. No.	Part No.	Qty.	Description

* Not illustrated
Order Parts From Kohler



Exhaust Assembly Kohler Model CV15T-41604

Ref. No.	Part No.	Qty.	Description
1	12 068 44-S	1	Muffler
2	25 072 04-S	2	Stud M8x1.25x33
3	12 041 03-S	1	Gasket-Exhaust Manifold
4	X-25-78-S	1	Washer-Plain, 1/4
5	M-545016-S	1	Screw-HF, M5x0.8x16
6	M-841080-S	2	Nut-HF, M8x1.25
7	M-645016-S	2	Screw-HF, M6x1.0x16
8	M-645025-S	2	Screw-HF, M6x1.0x25
9	12 126 71-S	1	Bracket-Muffler

Ref. No.	Part No.	Qty.	Description

Obtain Parts From Kohler

