



62in Guardian[®] Recycler[®] Mower Groundsmaster[®] 200 Series

Model No. 30569-210000001 and Up

Parts Catalog

Ordering Replacement Parts

To order replacement parts, please supply: the part number, the quantity, and the description of each part desired.

Understanding Reference Numbers

Each identified part in an illustration has a reference number. The reference number for a part also appears in the parts list, along with other information about the part.

This catalog uses two special reference number formats, one to indicate parts in a service assembly and another to indicate the quantity of a given part in an illustration.

Service Assembly Reference Numbers

Parts in service assemblies have reference numbers in the form **a:b**. The **a** represents the reference number of the entire service assembly and the **b** represents a sequential number unique to each part within the service assembly.

For example, a wheel assembly might be identified by reference number **6**, the tire by **6:1**, the valve by **6:2**, and the wheel by **6:3**. When you order the assembly identified by reference number **6**, you receive all parts identified by reference numbers **6:1**, **6:2**, and **6:3**. However, you may also order any part individually.

Reference numbers of this type appear in illustrations and in part lists.

Reference Numbers Indicating Quantity

In an illustration, if a reference number indicates more than one part, the reference number has the form **nX y**. The **n** represents the quantity of the part, the **X** is the multiplication symbol, and the **y** represents the reference number.

For example, in an illustration, the reference number **2X 37** means that two of the parts identified by reference number **37** are indicated.

Contents

Description	Page	Description	Page
Housing and Idler Assembly	3	Gear Box Assembly No. 104-3441	9
Carrier Frame Assembly	4	Cover Assembly	10
Cutting Chamber Assembly	6	Counterbalance Manifold Installation Assembly	11
Spindle and Blade Assembly	7	Counterbalance Manifold ASM No. 92-5638 ..	12
Gearbox Installation Assembly	8	Hydraulic Schematic	13

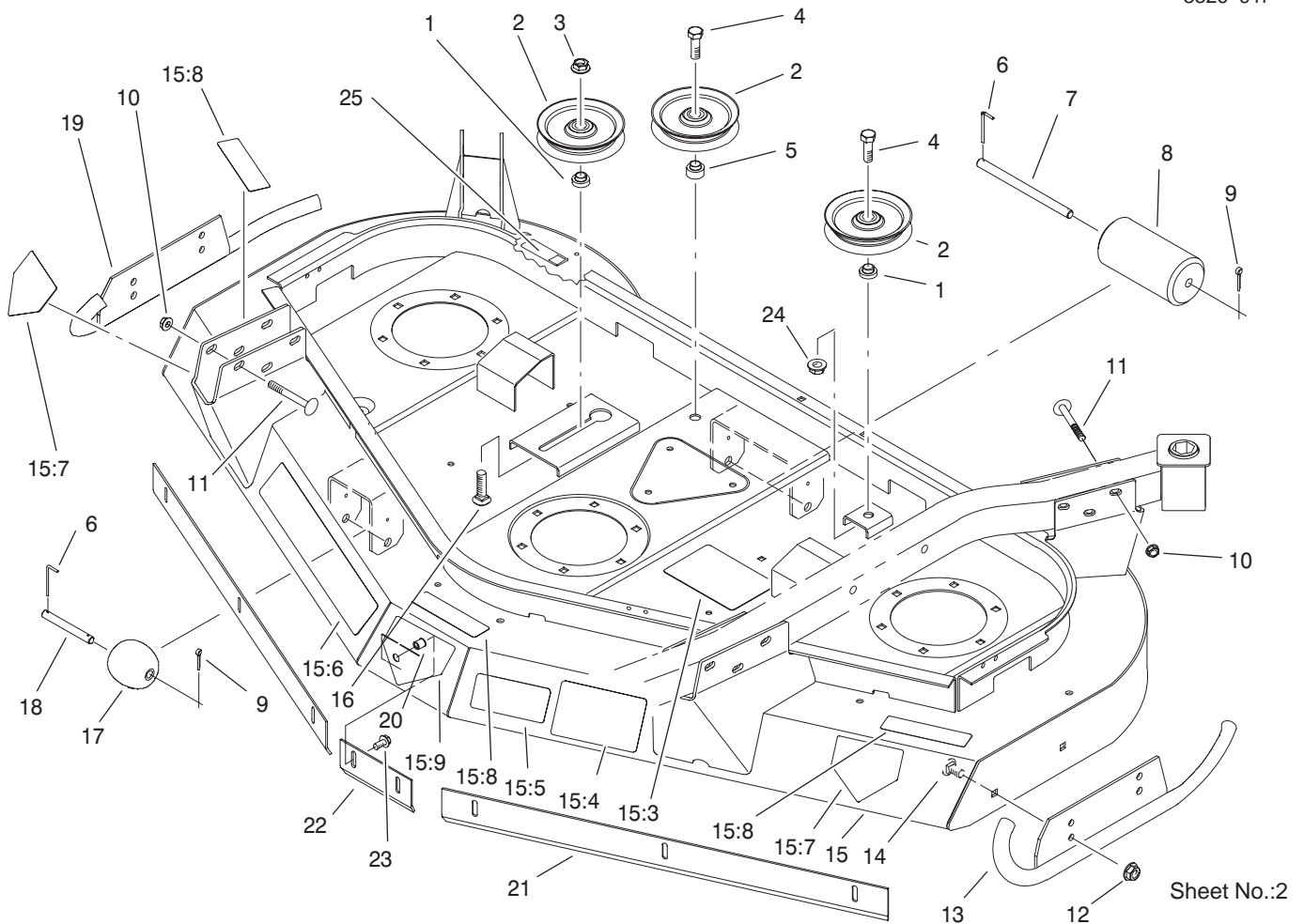
Accessories

Description	Model / Part No.	Description	Model / Part No.
Kit-Spindle	95-3081	Kit-Blade and Belt	95-3073

Part Description Abbreviations

Part descriptions in this catalog may include the following abbreviations.

Abbreviation	Meaning	Abbreviation	Meaning
AR	as required	HYD	hydraulic
ASM	assembly	INC	incorporated
CARR	carriage	LH	left hand
DEG	degrees	NI	nylon insert
FH	flat head	PPH	Phillips pan head
GA	gauge	PTH	Phillips truss head
HF	hex flange	PTO	power take off
HH	hex head	RH	right hand
HHF	hex head flange	SFH	slotted fillister head
HLH	hex lag head	SHH	slotted hex head
HJ	hex jam	SQH	square head
HOC	height-of-cut	SHWH	slotted hex washer head
HS	hex socket	SPH	slotted pan head
HSBH	hex socket button head	SRH	slotted round head
HSFH	hex socket flat head	STD	standard
HSH	hex socket head	TAP	self tapping
HWH	hex washer head	TTH	Torx truss head
HWHTF	hex washer head thread forming	WH	wing head

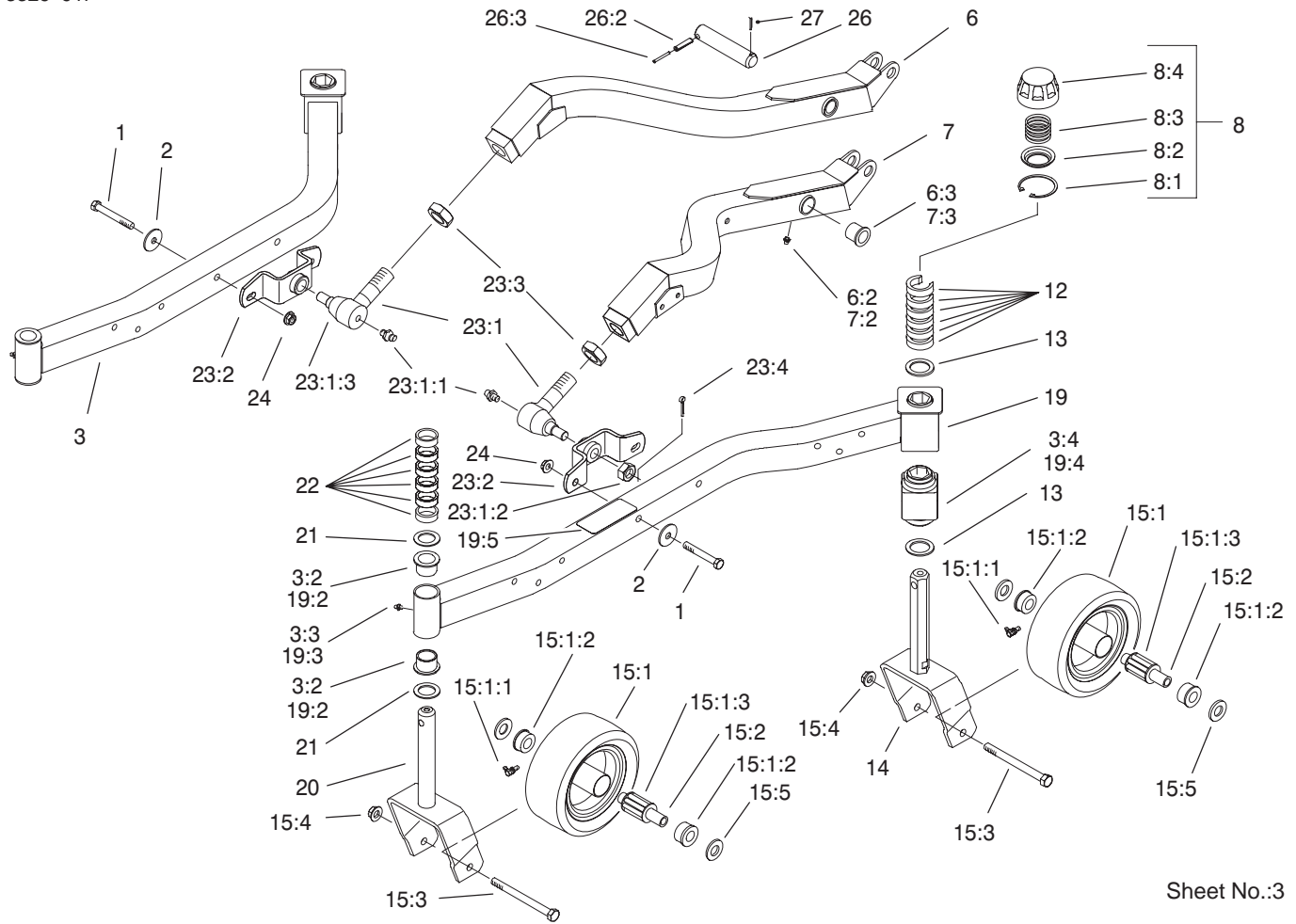


Sheet No.:2

Housing and Idler Assembly

Ref. No.	Part No.	Qty.	Description
1	69-6960	2	Spacer-Idler
2	63-1540-03	3	Pulley-Idler
3	3296-25	1	Nut-Lock NI
4	325-6	2	Screw-HH
5	69-6970	1	Spacer-Idler, Flat
6	57-0690	3	Pin-Special
7	40-6400	1	Shaft-Roller
8	36-1740	1	Roller-Deck
9	3272-11	3	Pin-Cotter
10	32128-19	12	Nut-HF
11	3231-10	12	Screw-CARR
12	32128-21	4	Nut-HF
13	92-5589-01	1	Skid-LH
14	3231-1	4	Screw-CARR
15	92-5571	1	Deck ASM
15:3	92-4092	1	Decal-Routing, Belt
15:4	105-9552	1	Decal-Warning
15:5	93-7818	1	Decal-Torque, Blade Bolt
15:6	92-4088	1	Decal-Guardian
15:7	100-6582	2	Decal-Danger, Int'l
15:8	100-6578	3	Decal-Danger
15:9	100-6583	1	Decal-Danger
16	3233-30	1	Screw-CARR
17	29-4820	2	Roller
18	57-0680	2	Shaft-Roller

Ref. No.	Part No.	Qty.	Description
19	92-5592-01	1	Skid-RH
20	32148-7	8	Nut-Insert
21	93-4388-01	2	Baffle-Side
22	93-4389-01	1	Baffle-Center
23	3234-5	8	Screw
24	32128-23	1	Nut-HF
25	104-0131	1	Decal-Ansi



Sheet No.:3

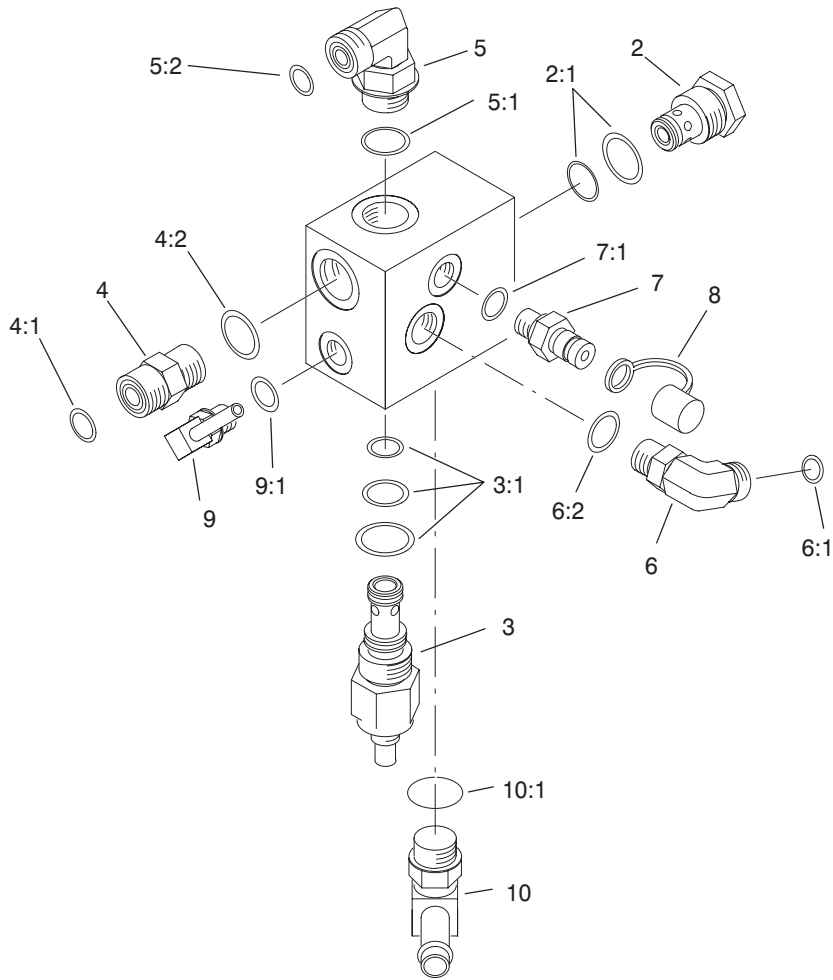
Carrier Frame Assembly

Ref. No.	Part No.	Qty.	Description
1	324-12	4	Screw-HH
2	66-6480	4	Washer
3	92-5623	1	RH Castor Arm ASM
3:2	94-1291	2	Bushing-Special
3:3	302-5	1	Fitting-Grease
3:4	93-8471	1	Bushing-Rubber, Square
6	99-1254	1	RH Lift Arm ASM
6:2	302-5	1	Fitting-Grease
6:3	256-268	2	Bushing
7	99-1257	1	LH Lift Arm ASM
7:2	302-5	1	Fitting-Grease
7:3	256-268	2	Bushing
8	92-8862	4	HOC Cap ASM
8:1	92-5581	1	Ring-Retaining
8:2	92-5583	1	Washer-Cap
8:3	92-5584	1	Spring-Compression
8:4	92-8861	1	Cap-HOC
12	92-8866	12	Spacer
13	92-1765	4	Washer-Thrust
14	92-5578-01	2	Fork-Castor, Rear
*15	95-3076	1	Wheel Kit-Castor
15:1	85-5760	4	Wheel
15:1:1	302-40	1	Fitting-Grease
15:1:2	62-5580	2	Bearing-Outside
15:1:3	83-4740	1	Bearing

Ref. No.	Part No.	Qty.	Description
15:2	62-4340	4	Spanner
15:3	325-22	4	Screw-HH
15:4	32128-23	4	Nut-HF
15:5	3256-6	8	Washer-Flat
19	92-5573	1	Castor Arm ASM-LH
19:2	94-1291	2	Bushing-Special
19:3	302-5	1	Fitting-Grease
19:4	93-8471	1	Bushing-Rubber, Square
19:5	93-7826	1	Decal-HOC
20	98-7068-01	2	Fork-Castor
21	3-6781	4	Washer-Thrust
22	63-0070	12	Spacer
☆23		2	Balljoint ASM
23:1	86-8100	1	Joint-Ball
23:1:1	302-5	1	Fitting-Grease
23:1:2	32136-2	1	Nut-SHH
23:1:3	105-7835	1	Seal
23:2	98-7944-01	1	Mount-Balljoint
23:3	21-3000	1	Nut-HJ, Push Arm
23:4	3272-12	1	Pin-Cotter
24	32128-42	4	Nut-HF
26	98-2330	2	Pivot Pin ASM
26:2	32121-67	1	Pin-Roll
26:3	32121-61	1	Pin-Roll
27	3272-19	2	Pin-Cotter

* Not illustrated

☆ Not serviced separately



Sheet No.:A2

T-3460

Counterbalance Manifold Assembly No. 92-5638

Ref. No.	Part No.	Qty.	Description
☆1		1	Manifold Block
2	92-5645	1	Cartridge-Relief
2:1	75-2080	1	Seal Kit
☆2:1:1		1	O-Ring
☆2:1:2		1	O-Ring
☆2:1:3		1	Ring-Backup
3	92-5646	1	Cartridge-Logic
3:1	69-4240	1	Seal Kit
☆3:1:1		1	O-Ring
☆3:1:2		1	O-Ring
☆3:1:3		1	O-Ring
4	340-4	1	Adapter
4:1	237-30	1	O-Ring
4:2	237-79	1	O-Ring
5	340-98	1	Fitting-HYD, 90°
5:1	237-79	1	O-Ring
5:2	237-30	1	O-Ring
6	340-77	1	Fitting-HYD, 90°
6:1	237-22	1	O-Ring
6:2	237-42	1	O-Ring
7	354-77	1	Fitting-Quick
7:1	237-78	1	O-Ring
8	353-947	1	Cap-Dust, Rubber
9	304-99	1	Stem-Hose
9:1	237-78	1	O-Ring

Ref. No.	Part No.	Qty.	Description
10	354-120	1	Fitting-HYD, 90°
10:1	237-79	1	O-Ring

☆ Not serviced separately

Hydraulic Schematic

