



# Electric Harness Kit

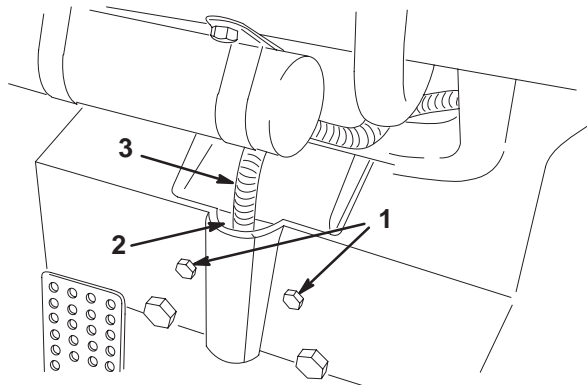
## Workman<sup>®</sup> 1100/2100 and Twister<sup>™</sup> Utility Vehicle

Part No. 99-7924

Form No. 3326-924

### Installation Instructions

1. Position the machine on a level surface. Set the parking brake, stop the engine, and remove the key.
2. Remove the electrical box cover.
3. Remove the rubber boot from the positive (+) battery cable and disconnect the battery cable from the battery.
4. Locate the end of the wire harness that has 2 ring end terminals and a plug mounted to it.
5. To ease harness routing, carefully remove the protective conduit from the short ring end wire and plug the end wire. Retain the conduit for future installation.
6. Carefully tape the loose connector ends and wires around the harness to ease harness routing.
7. Remove the 2 small bolts securing the panels to the front of the operator's compartment (Fig. 1).



**Figure 1**

1. Mounting bolts
2. Harness opening
3. Existing harness

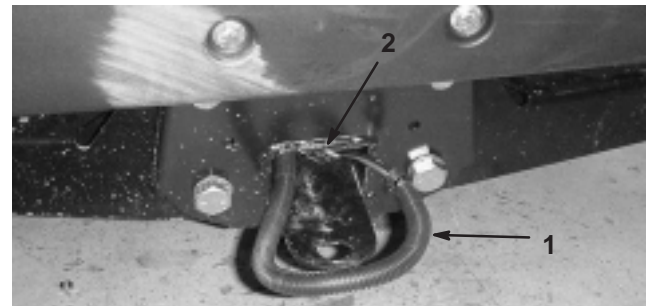
8. Using a screw driver or similar tool, pry apart the overlap in the harness opening in the vehicle compartment to allow greater access.

**Note:** Make sure that the vehicle is in a temperature above 68 degrees so that the opening is not stiff when prying.

9. Insert the taped end of the harness into the opening in the vehicle operator's compartment until it reaches the center frame tube (Fig. 1). The new harness will be routed alongside the existing harness to the rear of the machine.
10. Using a wire, hook the harness and carefully pull it through the tube to the front of the vehicle (above the tow bar) (Fig. 2).

**Note:** To ease in routing the harness, have one person feeding the harness into the tube while another person is pulling. Use caution not to damage the harness end when pulling.

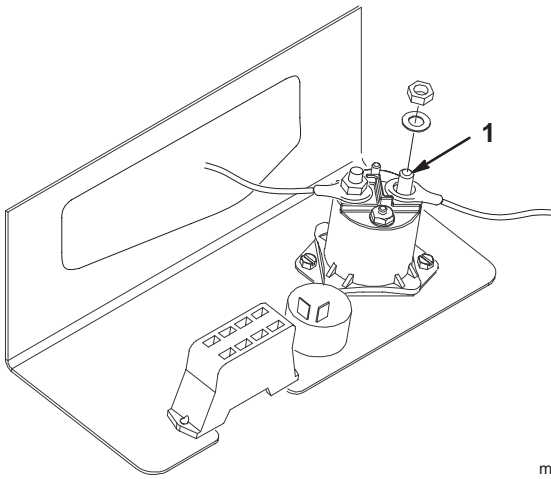
11. Loop the end of the harness, insert the end back into the tube, and feed the end back through the tube to the engine compartment (Fig. 2).



**Figure 2**

1. Harness
2. Front of tube

12. Route the harness along the right frame member of the engine compartment, behind the bottom of the air cleaner, to the fuse compartment.
13. Remove the tape from the end of the harness. Install the protective conduit to the wires.
14. Remove the nut securing the positive battery cable to the solenoid (Fig. 3 and 4).
15. Insert the ring end of the terminal of the harness onto the solenoid post and secure it with the nut removed in step 14.
16. Install the fuse box cover.
17. Locate and remove the screw securing the engine ground wire to the front right corner of the engine compartment.

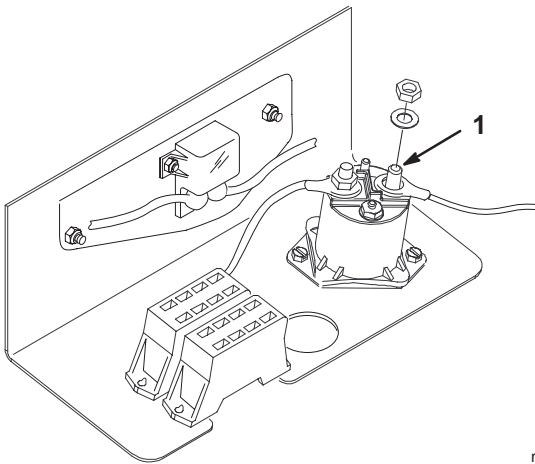


m-5622

**Figure 3**

Workman 1100 and 2100

1. Positive post—solenoid



m-5623

**Figure 4**

Twister

1. Positive post—solenoid

18. Secure the engine ground wire and other harness ring end terminal to the engine.

**Note:** The remaining plug from the harness is used for accessories.

19. Secure the harness to the frame with wire ties.

**Important** Keep the harness and plug away from hot or moving parts.

20. Secure the harness fuse block to the electrical mount with 2 screws (#10) and nuts (Fig. 5).

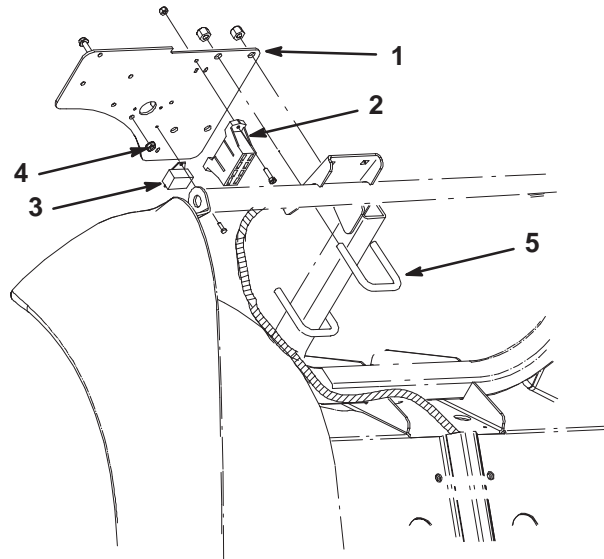
21. Secure the thermal breaker to the electrical mount with 2 screws (#6) and nuts.

22. Secure the ring terminal to the electrical mount with a screw (1/4) and nut (Fig. 5).

23. Loosely secure the electrical mount to the square frame tube with 2 U-bolts and nuts (Fig. 5).

24. Route the remaining harness connector under the dash panel to the switch in the panel.

25. Plug the connector into the switch (Fig. 6).

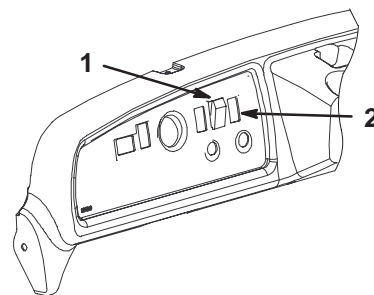


**Figure 5**

- |                     |                                 |
|---------------------|---------------------------------|
| 1. Electrical mount | 4. Ring terminal mounting screw |
| 2. Fuse block       | 5. U-bolts and nuts             |
| 3. Thermal breaker  |                                 |

**Note:** If the hole in the dash is in use, measure over 1/2 in. (13 mm) and cut another 0.835 x 1.46 in. (21 x 37 mm) rectangular hole in the dash. **Make sure not to damage any existing components behind the dash when cutting the hole.**

26. Insert the switch into the hole in the dash (Fig. 6).



**Figure 6**

1. Switch
2. Cut new hole (if required)

27. Secure the harness to the vehicle with wire ties.

**Important** Keep the harness and plug away from hot or moving parts.