



Guardian Recycler[®] Conversion Kit

Groundsmaster[®] 4000-D

Model No. 30420

Parts Catalog

Ordering Replacement Parts

To order replacement parts, please supply: the part number, the quantity, and the description of each part desired.

Understanding Reference Numbers

Each identified part in an illustration has a reference number. The reference number for a part also appears in the parts list, along with other information about the part.

This catalog uses two special reference number formats, one to indicate parts in a service assembly and another to indicate the quantity of a given part in an illustration.

Service Assembly Reference Numbers

Parts in service assemblies have reference numbers in the form **a:b**. The **a** represents the reference number of the entire service assembly and the **b** represents a sequential number unique to each part within the service assembly.

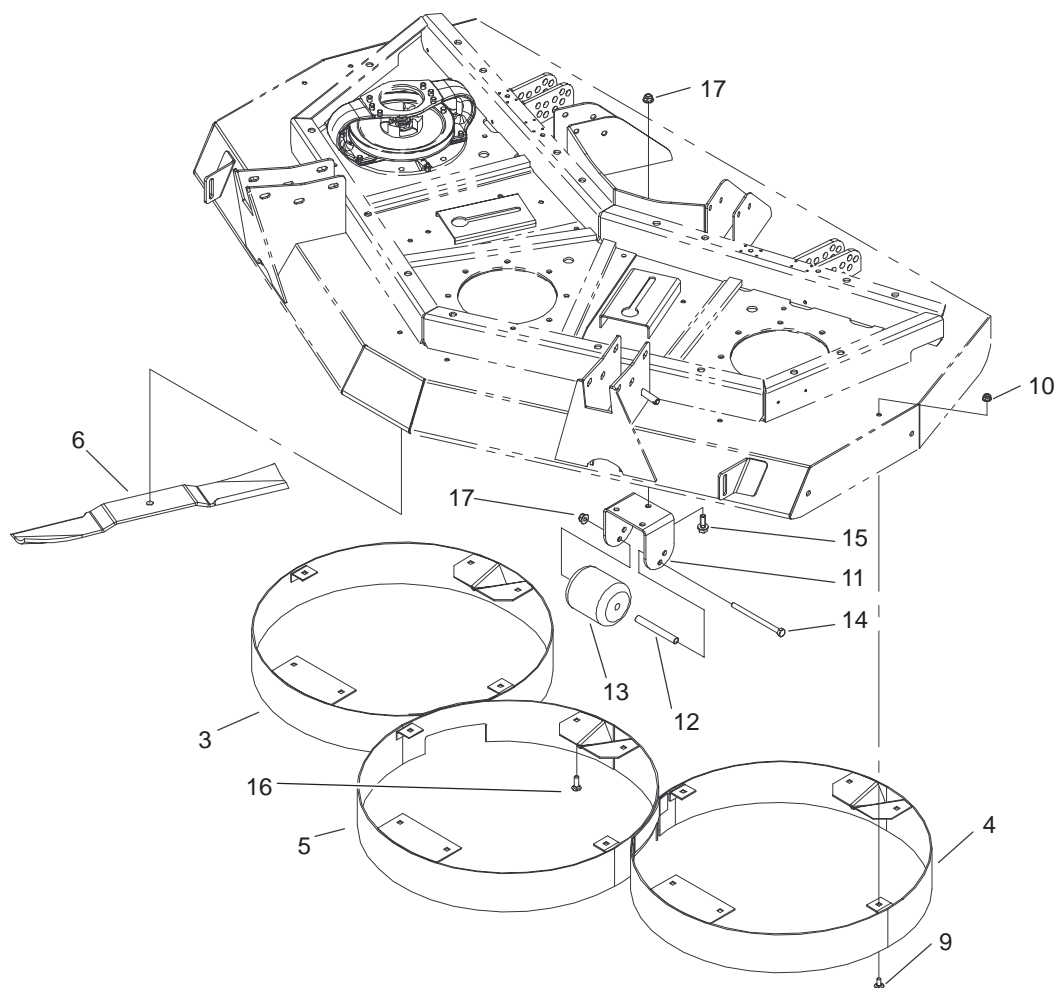
For example, a wheel assembly might be identified by reference number **6**, the tire by **6:1**, the valve by **6:2**, and the wheel by **6:3**. When you order the assembly identified by reference number **6**, you receive all parts identified by reference numbers **6:1**, **6:2**, and **6:3**. However, you may also order any part individually.

Reference numbers of this type appear in illustrations and in part lists.

Reference Numbers Indicating Quantity

In an illustration, if a reference number indicates more than one part, the reference number has the form **nX y**. The **n** represents the quantity of the part, the **X** is the multiplication symbol, and the **y** represents the reference number.

For example, in an illustration, the reference number **2X 37** means that two of the parts identified by reference number **37** are indicated.

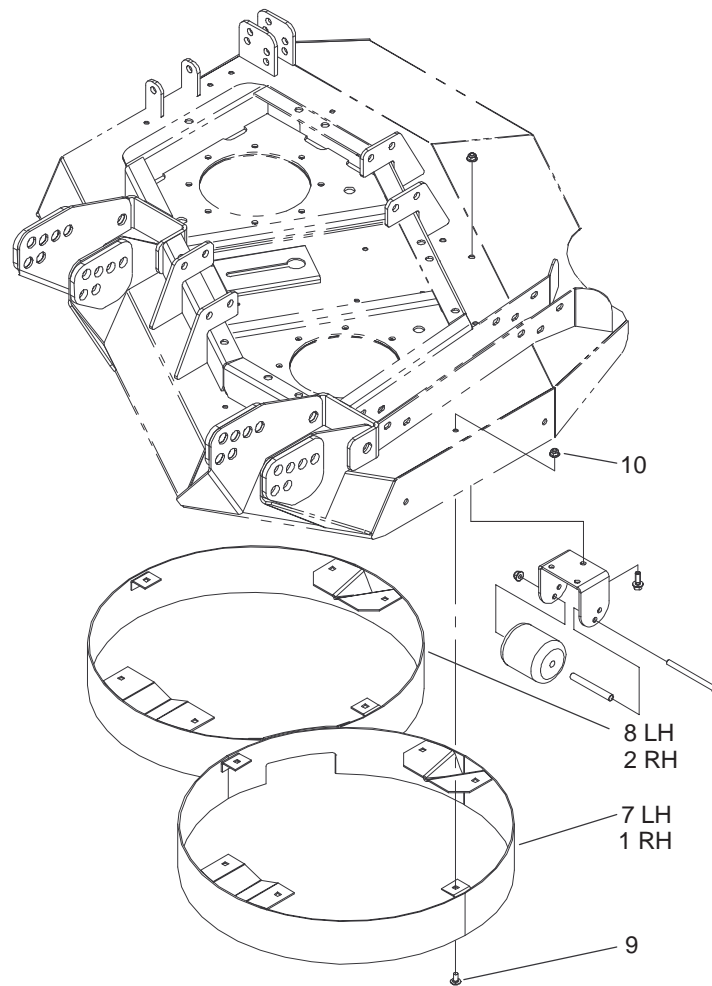


Sheet No.:0

Center Chamber, Roller and Blade Assembly

Ref. No.	Part No.	Qty.	Description
3	92-5602-01	1	RH Chamber ASM
4	92-5594-01	1	LH Chamber ASM
5	92-5600-01	1	Center Chamber ASM
6	92-5608-03	7	Blade
9	3230-18	38	Screw-CARR
10	104-8300	45	Nut-Flange, NI
11	104-0754-01	3	Bracket-Roller
12	105-4549	3	Spacer-Roller
13	93-4803	3	Roller-Deck
14	322-29	3	Screw-HH
15	3234-42	9	Screw-HHF
16	3230-22	4	Screw-CARR
17	104-8301	9	Nut-Flange, NI

Ref. No.	Part No.	Qty.	Description



Sheet No.:1

Right and Left Chamber Assembly

Ref. No.	Part No.	Qty.	Description
1	99-5538-01	1	RH Outer Chamber ASM
2	99-5539-01	1	RH Inner Chamber ASM
7	100-5533-01	1	LH Outer Chamber ASM
8	100-5534-01	1	LH Inner Chamber ASM
9	3230-18	38	Screw-CARR
10	104-8300	45	Nut-Flange, NI

