



7in Cordless Trimmer 18cm Cordless Trimmer String Trimmer

Model No. 51460—220000001 and Up

Model No. 51461—220000001 and Up

Parts Catalog

Ordering Replacement Parts

To order replacement parts, please supply: the part number, the quantity, and the description of each part desired.

Understanding Reference Numbers

Each identified part in an illustration has a reference number. The reference number for a part also appears in the parts list, along with other information about the part.

This catalog uses two special reference number formats, one to indicate parts in a service assembly and another to indicate the quantity of a given part in an illustration.

Service Assembly Reference Numbers

Parts in service assemblies have reference numbers in the form **a:b**. The **a** represents the reference number of the entire service assembly and the **b** represents a sequential number unique to each part within the service assembly.

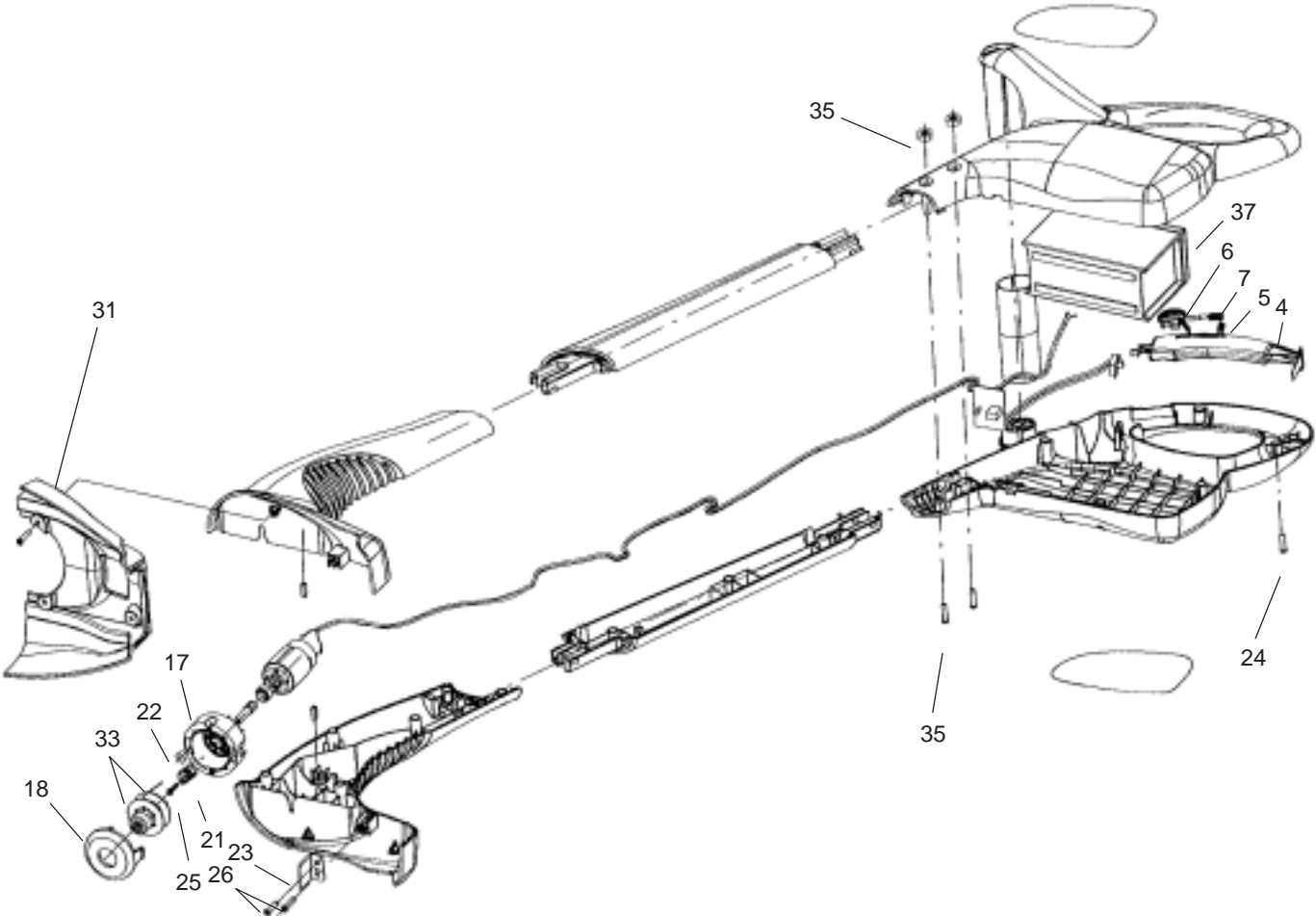
For example, a wheel assembly might be identified by reference number **6**, the tire by **6:1**, the valve by **6:2**, and the wheel by **6:3**. When you order the assembly identified by reference number **6**, you receive all parts identified by reference numbers **6:1**, **6:2**, and **6:3**. However, you may also order any part individually.

Reference numbers of this type appear in illustrations and in part lists.

Reference Numbers Indicating Quantity

In an illustration, if a reference number indicates more than one part, the reference number has the form **nX y**. The **n** represents the quantity of the part, the **X** is the multiplication symbol, and the **y** represents the reference number.

For example, in an illustration, the reference number **2X 37** means that two of the parts identified by reference number **37** are indicated.



Sheet No.:0

Trimmer Assembly

| Ref. No. | Part No. | Qty. | Description |
|----------|----------|------|--|
| 4 | 105-3062 | 1 | Trigger |
| 5 | 106-1927 | 1 | Spring-Trigger, 7in |
| 6 | 105-3063 | 1 | Lock-Trigger |
| 7 | 106-1926 | 1 | Spring-Switch, 7in |
| 17 | 105-6947 | 1 | Drum-Trimmer, 7in |
| 18 | 105-6946 | 1 | Cap-Spool, 7in |
| 21 | 73-8270 | 1 | Spring, Compression |
| 22 | 73-8260 | 1 | Eyelet |
| 23 | 105-3051 | 1 | Cutter |
| 24 | 105-3057 | 15 | Screw-Plastic Thd Form |
| 25 | 105-3068 | 1 | Screw-Machine |
| 26 | 105-3079 | 2 | Screw-Plastic Thd Form (only on: 51460) |
| 26 | 105-3079 | 6 | Screw-Plastic Thd Form (only on: 51461) |
| 31 | 105-3069 | 1 | Shield-7in Trimmer (Ce) (only on: 51461) |
| *32 | 105-3071 | 1 | Charger-Battery, 230v 50hz (Ce) (only on: 51461) |
| *32 | 105-3064 | 1 | Charger-Battery, 120v 60hz (UI/Cul) (only on: 51460) |

| Ref. No. | Part No. | Qty. | Description |
|----------|----------|------|------------------|
| 33 | 100-9718 | 1 | Spool ASM |
| 35 | 106-1909 | 1 | ASM-Bolt Bag |
| 37 | 106-1905 | 1 | ASM-Battery, 7in |

* Not illustrated