



Z350

Z Master[®] with 48" Mower and Bagger

Model No. 74804TE—22000001 and Up

Parts Catalog

Ordering Replacement Parts

To order replacement parts, please supply: the part number, the quantity, and the description of each part desired.

Understanding Reference Numbers

Each identified part in an illustration has a reference number. The reference number for a part also appears in the parts list, along with other information about the part.

This catalog uses two special reference number formats, one to indicate parts in a service assembly and another to indicate the quantity of a given part in an illustration.

Service Assembly Reference Numbers

Parts in service assemblies have reference numbers in the form **a:b**. The **a** represents the reference number of the entire service assembly and the **b** represents a sequential number unique to each part within the service assembly.

For example, a wheel assembly might be identified by reference number **6**, the tire by **6:1**, the valve by **6:2**, and the wheel by **6:3**. When you order the assembly identified by reference number **6**, you receive all parts identified by reference numbers **6:1**, **6:2**, and **6:3**. However, you may also order any part individually.

Reference numbers of this type appear in illustrations and in part lists.

Reference Numbers Indicating Quantity

In an illustration, if a reference number indicates more than one part, the reference number has the form **nX y**. The **n** represents the quantity of the part, the **X** is the multiplication symbol, and the **y** represents the reference number.

For example, in an illustration, the reference number **2X 37** means that two of the parts identified by reference number **37** are indicated.

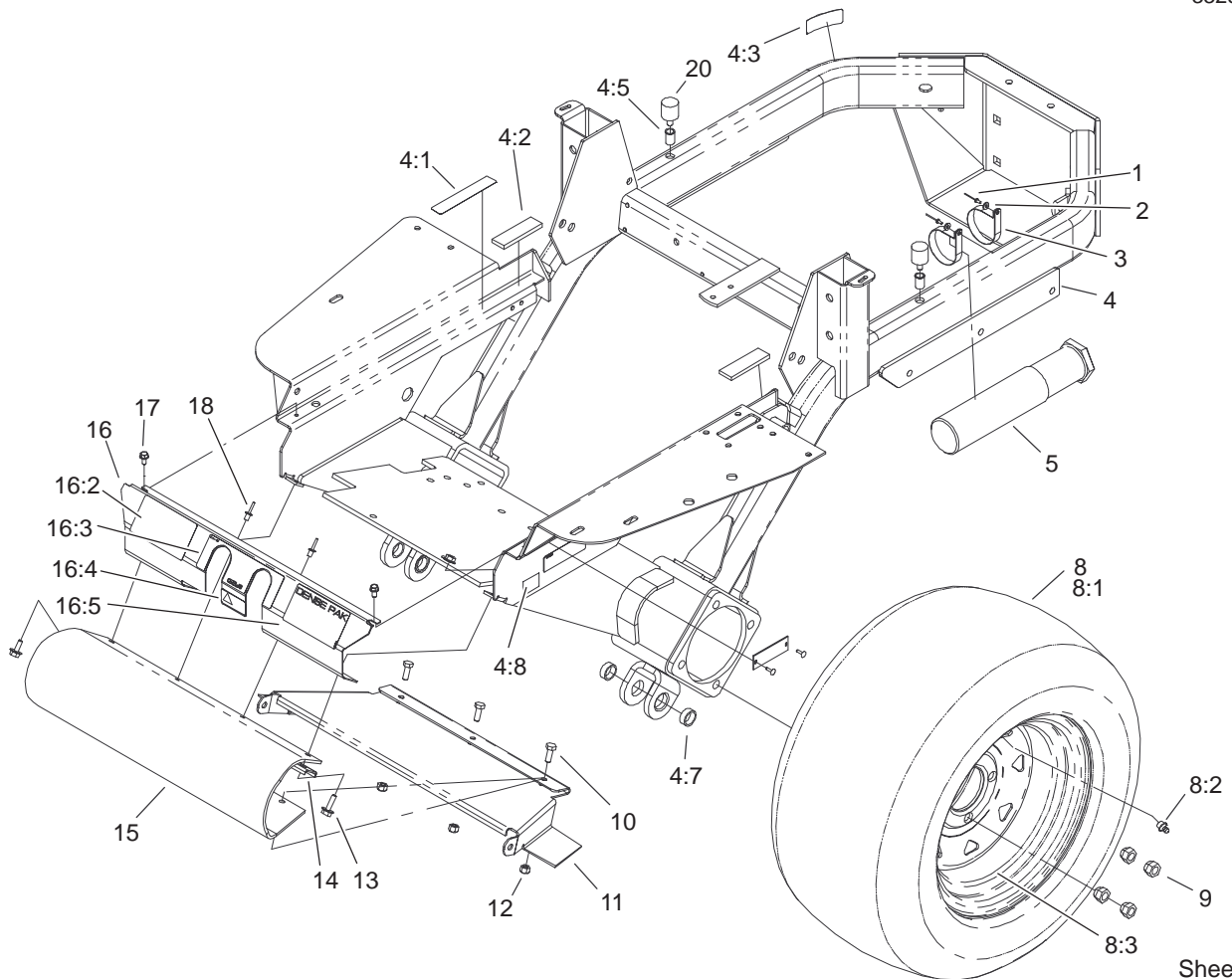
Contents

Description	Page	Description	Page
Traction Frame Assembly	3	Gearbox Assembly	27
Tail Wheel and Bumper Assembly	4	Group 1 – Crankshaft Assembly	
Engine Installation and Fuel Assembly	5	Kohler CH20S PS-64675	28
Hydraulic #1 Assembly	6	Group 2 – Crankcase Assembly	
Hydraulic #2 Assembly	7	Kohler CH20S PS-64675	29
Electrical #1 Assembly	8	Group 3 – Oil Pan/Lubrication Assembly	
Electrical #2 Assembly	9	Kohler CH20S PS-64675	30
Parking Brake Assembly	10	Group 4 – Head/Valve/Breather Assembly	
Steering Control Assembly	11	Kohler CH20S PS-64675	31
Seat Assembly	12	Group 5 – Ignition/Electrical Assembly	
Exhaust Assembly	13	Kohler CH20S PS-64675	33
PTO / Hydro Drive Assembly	14	Group 6 – Blower Housing Assembly	
PTO / Gearbox Assembly	15	Kohler CH20S PS-64675	34
Drive Shaft Assembly No. 94-4722	16	Group 7 – Starter Assembly	
Carrier Frame Assembly	17	Kohler CH20S PS-64675	35
Deck Assembly	19	Group 8 – Fuel System Assembly	
Plenum Assembly	20	Kohler CH20S PS-64675	36
Blower Assembly	21	Group 9 – Engine Control Assembly	
Air Cleaner and Bagger Frame Assembly	22	Kohler CH20S PS-64675	37
Bagger Assembly	23	Group 10 – Air Intake/Filtration Assembly	
Electrical Schematic	24	Kohler CH20S PS-64675	38
Hydraulic Schematic	25	Group 11 – Exhaust Assembly	
Gearbox Kit Assembly No. 105-6178	26	Kohler CH20S PS-64675	39

Part Description Abbreviations

Part descriptions in this catalog may include the following abbreviations.

Abbreviation	Meaning	Abbreviation	Meaning
AR	as required	HYD	hydraulic
ASM	assembly	INC	incorporated
CARR	carriage	LH	left hand
DEG	degrees	NI	nylon insert
FH	flat head	PPH	Phillips pan head
GA	gauge	PTH	Phillips truss head
HF	hex flange	PTO	power take off
HH	hex head	RH	right hand
HHF	hex head flange	SFH	slotted fillister head
HLH	hex lag head	SHH	slotted hex head
HJ	hex jam	SQH	square head
HOC	height-of-cut	SHWH	slotted hex washer head
HS	hex socket	SPH	slotted pan head
HSBH	hex socket button head	SRH	slotted round head
HSFH	hex socket flat head	STD	standard
HSH	hex socket head	TAP	self tapping
HWH	hex washer head	TTH	Torx truss head
HWHTF	hex washer head thread forming	WH	wing head

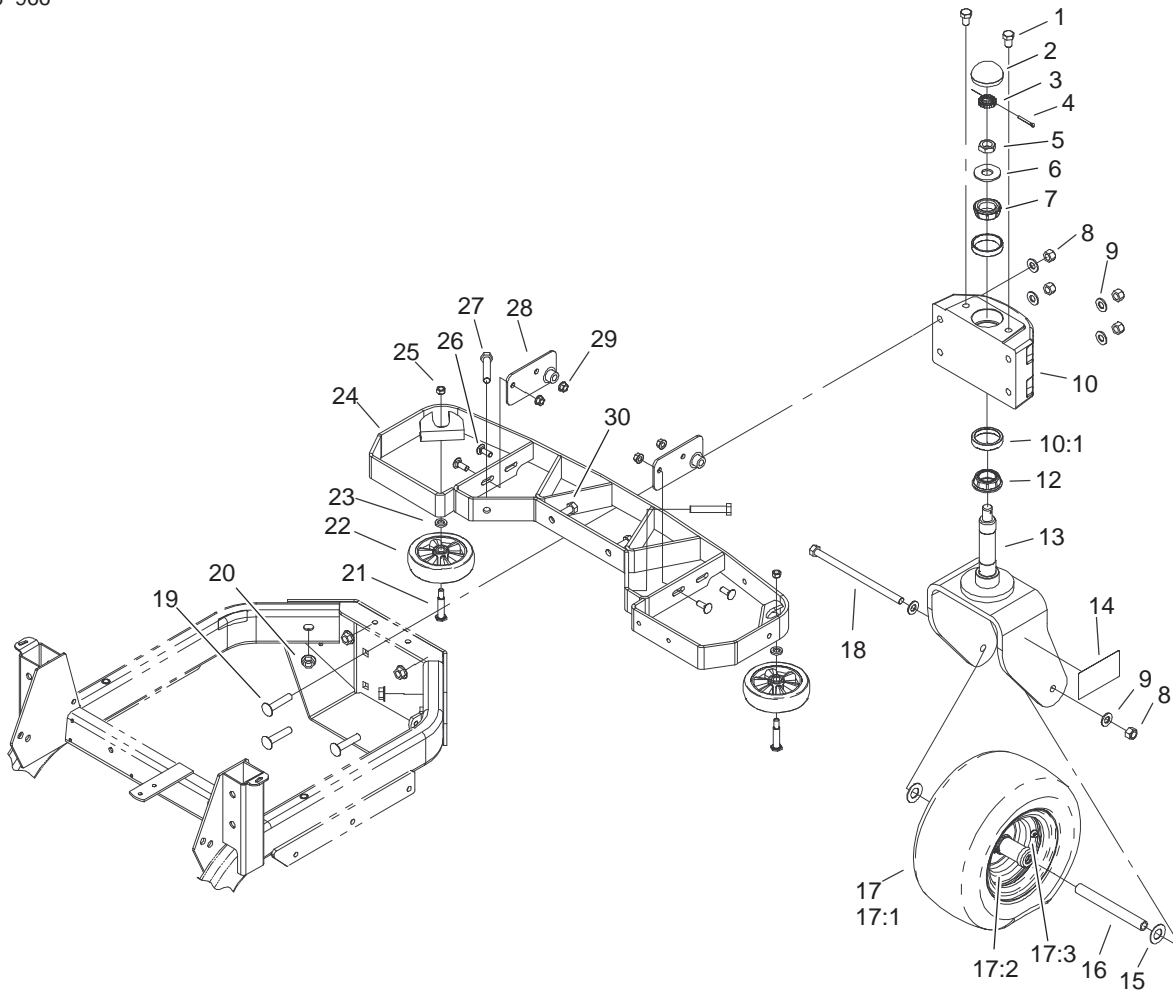


Sheet No.:2

Traction Frame Assembly

Ref. No.	Part No.	Qty.	Description
1	3269-8	2	Rivet
2	3256-21	2	Washer-Flat
3	2412-120	2	R-Clamp
4	104-7790	1	Frame ASM
4:1	98-1977	1	Decal-Warning
4:2	52-5260	2	Pad-Rubber
4:3	93-1265	1	Decal-Surface, Hot
4:5	32148-8	2	Insert-Threaded
4:7	100-2442	4	Bushing
4:8	105-4674	1	Decal-Noise, Intl
5	74-0720	1	Tube-Manual
8	94-9380	2	Tire And Wheel ASM
8:1	94-9387	1	Tire
8:2	232-27	1	Stem-Valve
8:3	94-9386	1	Wheel
9	242-50	8	Nut-Lug
10	322-4	3	Screw-HH
11	100-9614-01	1	Cover - Driveshaft
12	3296-29	3	Nut-Lock, NI
13	32144-44	2	Screw-HWH
14	100-9620-03	1	Bracket - Guard
15	100-9619	1	Guard - Footrest
16	104-2402	1	Cover Plate ASM
16:2	100-7789	1	Decal - Z350
16:3	98-1974	1	Decal-Control, Steering

Ref. No.	Part No.	Qty.	Description
16:4	98-4387	1	Decal-Protection, Ear
16:5	104-5106	1	Decal-Pak, Dense
17	32144-4	2	Screw-HWH
18	3290-412	2	Rivet
20	104-2442	2	Bumper - Rubber

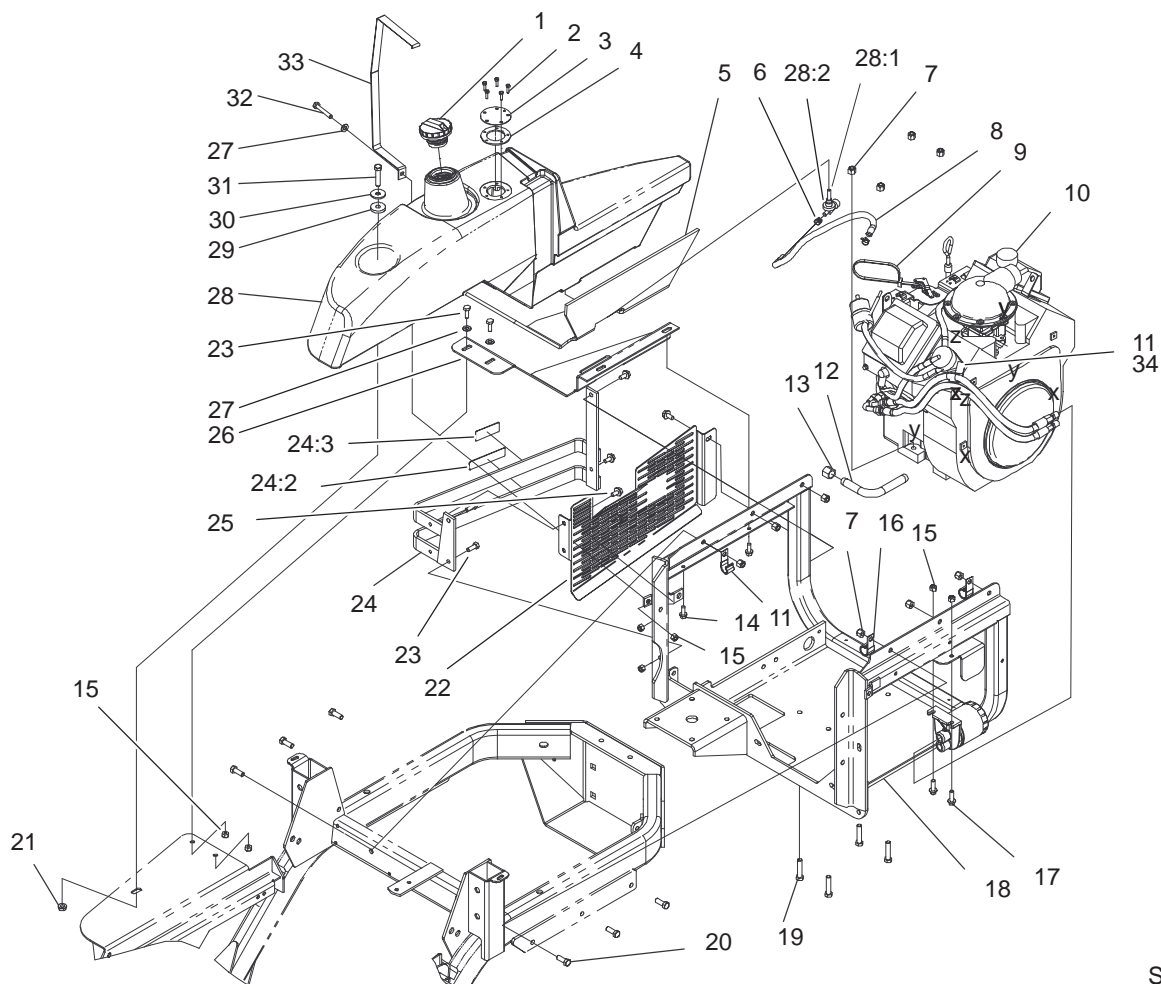


Tail Wheel and Bumper Assembly

Ref. No.	Part No.	Qty.	Description
1	325-2	2	Screw-HH
2	94-4665	1	Dustcap
3	93-0307	1	Nut-Lock, Retainer
4	3272-17	1	Pin-Cotter
5	3220-7	1	Nut-Jam
6	3256-8	1	Washer-Flat
7	254-62	1	Bearing-Roller, Cone
8	3296-23	5	Nut-Lock, NI
9	3256-26	6	Washer-Flat
10	105-1609	1	Spindle Housing ASM
10:1	254-61	2	Bearing-Cup
12	254-70	1	Bearing-Cone
13	94-4647-01	1	Caster Fork ASM
14	100-7789	1	Decal - Z350
15	3256-39	2	Washer-Flat
16	94-4753	1	Tube-Spacer, Castor
17	98-4352	1	Tire And Wheel ASM
17:1	94-9384	1	Tire,Multi-Rib
17:2	98-4351	1	Wheel ASM
*17:2:1	99-0246	4	Washer-Stop
*17:2:2	99-0247	2	Bearing-Roller
*17:2:3	99-0248	2	Seal-Felt
*17:2:4	99-0249	2	Cap-End
17:3	232-27	1	Stem-Valve
18	325-24	1	Screw-HH
19	3233-27	4	Screw-CARR

Ref. No.	Part No.	Qty.	Description
20	32128-23	4	Nut-HF
21	5188	2	Bolt-Shoulder
22	109375	2	Wheel ASM
23	9202424	2	Spacer
24	104-2434-03	1	Bumper ASM
25	32153-2	2	Nut-Lock
26	3231-2	4	Screw-CARR
27	325-11	2	Screw-HH
28	104-2430-03	2	Pivot ASM
29	32128-21	4	Nut-HF
30	325-5	2	Screw-HH

* Not illustrated

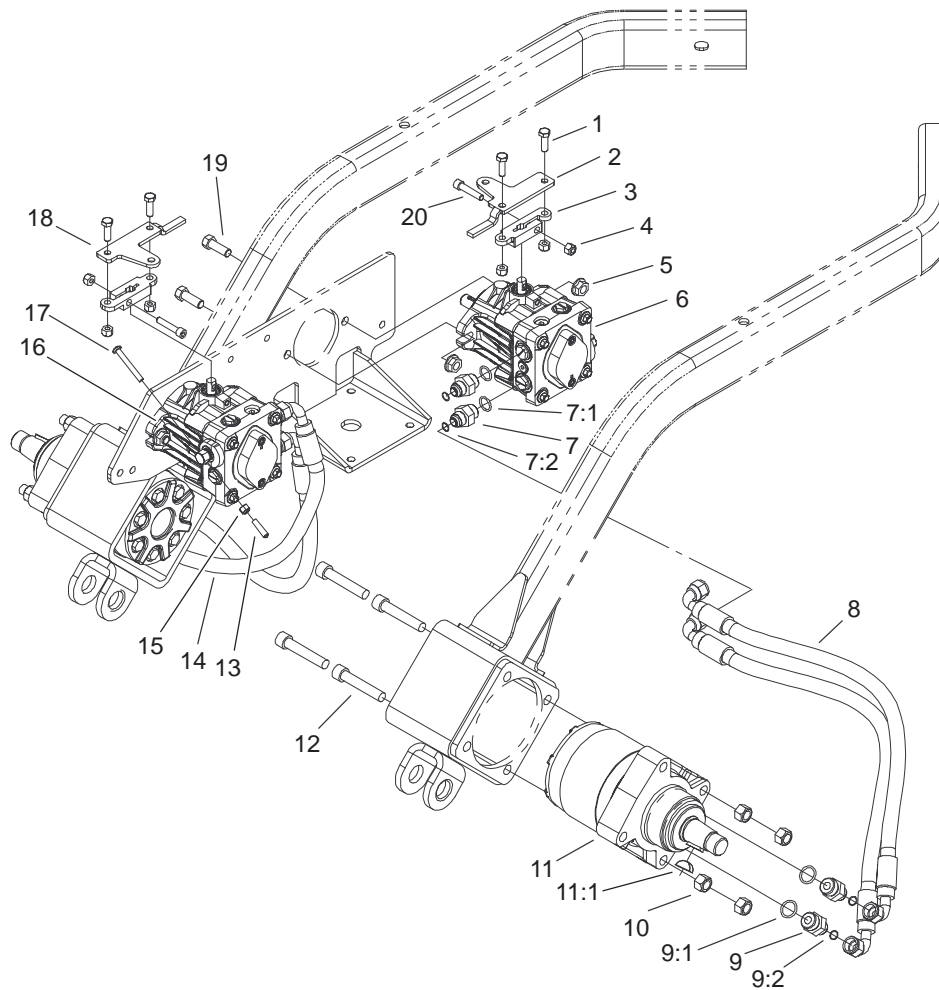


Sheet No.:4

Engine Installation and Fuel Assembly

Ref. No.	Part No.	Qty.	Description	Ref. No.	Part No.	Qty.	Description
1	93-3101	1	Cap-Fuel	24:2	93-1265	1	Decal-Surface, Hot
2	3250-29	5	Screw-PPH	24:3	98-1977	1	Decal-Warning
3	94-9597	1	Cover-Opening, Fuel Tank	25	32144-14	5	Screw-HWH
4	62-7650	1	Gasket	26	94-4798-01	1	Plate-Support, Tank
5	98-1319	1	Foam-Tank, Fuel	27	3256-23	3	Washer-Flat
6	2412-98	2	Clamp	28	94-9553	1	Fuel Tank ASM
7	3296-39	10	Nut-Lock, NI	28:1	46-6560	1	Bushing
8	98-0976	1	Hose-Gas	28:2	104048	1	Valve-Fuel
9	3290-378	1	Tie-Cable	29	240-11	1	Grommet-Mount, Tank
☆10		1	Engine-Kohler, Ch20s Ps64675	30	63-8410	1	Washer
11	8830	1	Clip	31	323-9	1	Screw-HH
12	94-9499	1	Tube-Drain, Oil	32	322-10	1	Screw-HH
13	288-4	1	Cap-Pipe	33	94-4799-03	1	Strap-Tank, Fuel
14	32144-11	2	Screw-TAP	34	2412-147	1	Clamp
15	3296-29	7	Nut-Lock, NI				
16	94-9580	2	Clamp - J				
17	3234-17	2	Screw-HHF				
18	100-5844-03	1	Engine Frame ASM				
19	323-9	4	Screw-HH				
20	323-6	6	Screw-HH				
21	3290-357	1	Nut-HHF				
22	98-1987-03	1	Guard - Belt				
23	322-4	4	Screw-HH				
24	98-4377	1	Bumper ASM				

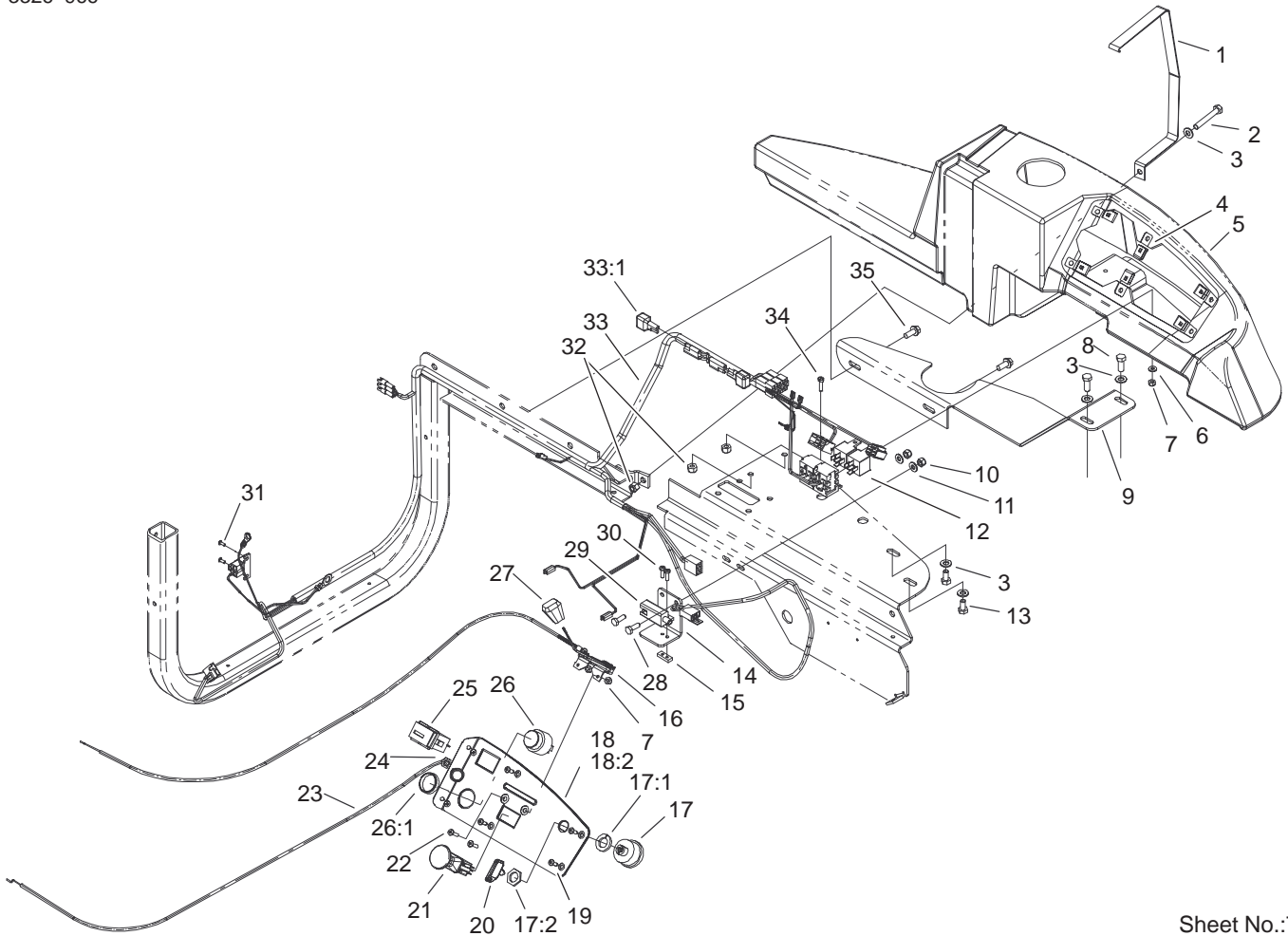
☆ Not serviced separately



Sheet No.:6

Hydraulic #2 Assembly

Ref. No.	Part No.	Qty.	Description	Ref. No.	Part No.	Qty.	Description
1	322-5	4	Screw-HH				
2	94-4702-03	1	Plate - Control, Left				
3	94-4678	2	Arm-Control, Pump				
4	3296-29	6	Nut-Lock, NI				
5	32128-42	4	Nut-HF				
6	104-7750	1	Pump-HYD, 10cc				
7	1-603990	4	Fitting-Straight				
7:1	237-79	1	O-Ring				
7:2	1-603992	1	O-Ring				
8	104-7845	2	HYD Hose ASM				
9	1-603991	4	Fitting-Straight				
9:1	237-80	1	O-Ring				
9:2	1-603992	1	O-Ring				
10	3296-23	8	Nut-Lock, NI				
11	99-0206	2	Motor-Wheel, HYD				
11:1	3257-42	1	Key-Woodruff				
12	3274-93	8	Screw-HSH				
13	1-613073	2	Grip-Valve, Dump				
14	104-7846	2	HYD Hose ASM				
15	3296-42	2	Nut-Lock, NI				
16	104-7751	1	Pump-HYD, 10cc				
17	1-801063	2	Screw				
18	94-4701-03	1	Plate-Control, Right				
19	324-5	4	Screw-HH				
20	3274-83	2	Screw-HSH				

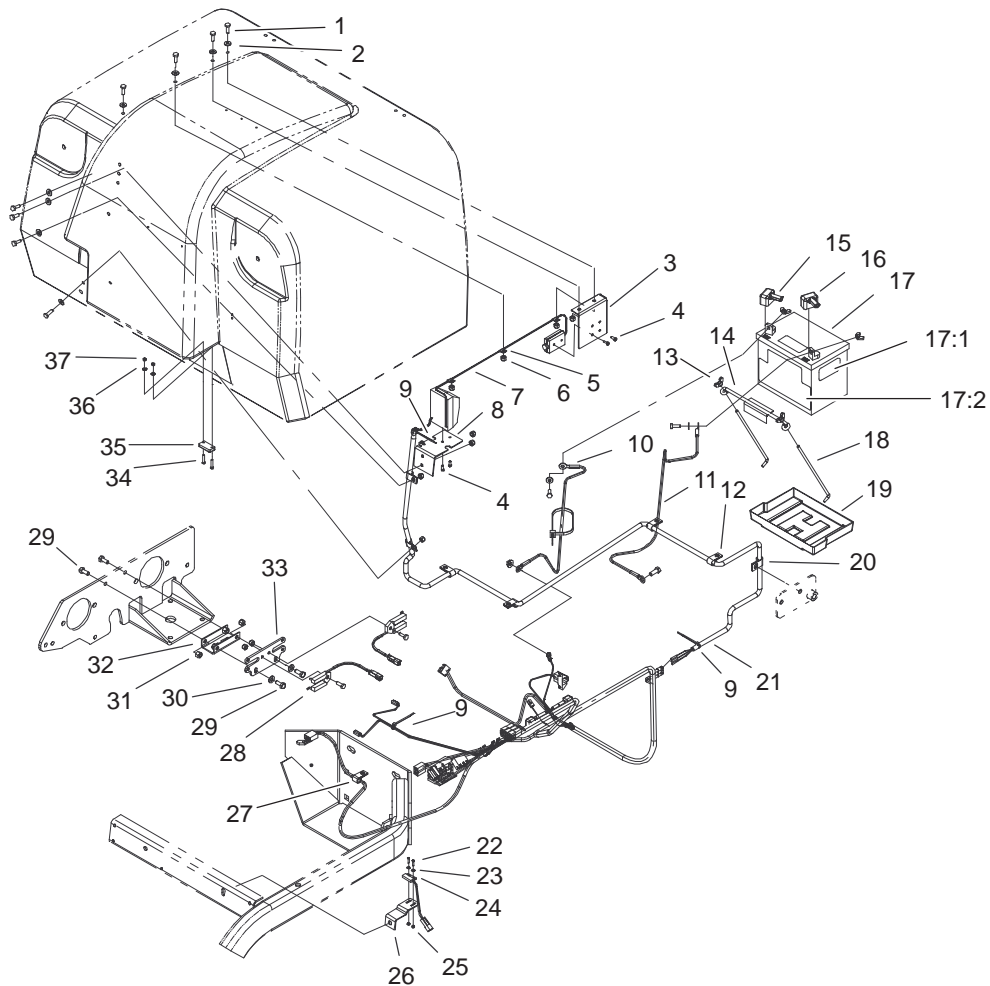


Sheet No.:7

Electrical #1 Assembly

Ref. No.	Part No.	Qty.	Description
1	94-9488-03	1	Strap – Console
2	322-11	1	Screw-HH
3	3256-23	5	Washer-Flat
4	95-1962	6	Clip – Tinnerman
5	104-0365	1	Console
6	3256-14	1	Washer-Flat
7	3296-2	3	Nut-Lock
8	322-4	2	Screw-HH
9	100-7792-01	1	Plate – Support, Console
10	3296-42	2	Nut-Lock, NI
11	3256-22	2	Washer-Flat
12	116397	2	Relay
13	322-2	2	Screw-HH
14	104-7773-01	1	Bracket-Switch
15	1-633181	1	Plate-Tapped
16	98-4350	1	Throttle Control ASM
17	88-9830	1	Key Switch ASM
17:1	3254-5	1	Washer-Lock, Internal
17:2	218-461	1	Nut-HH
18	104-7802	1	Instrument Panel ASM
18:2	104-7808	1	Decal – Instrument
19	32144-124	6	Screw-PPH
20	62-7770	2	Key-Ignition
21	1-633673	1	Switch-Delta
22	3250-13	2	Screw-PPH

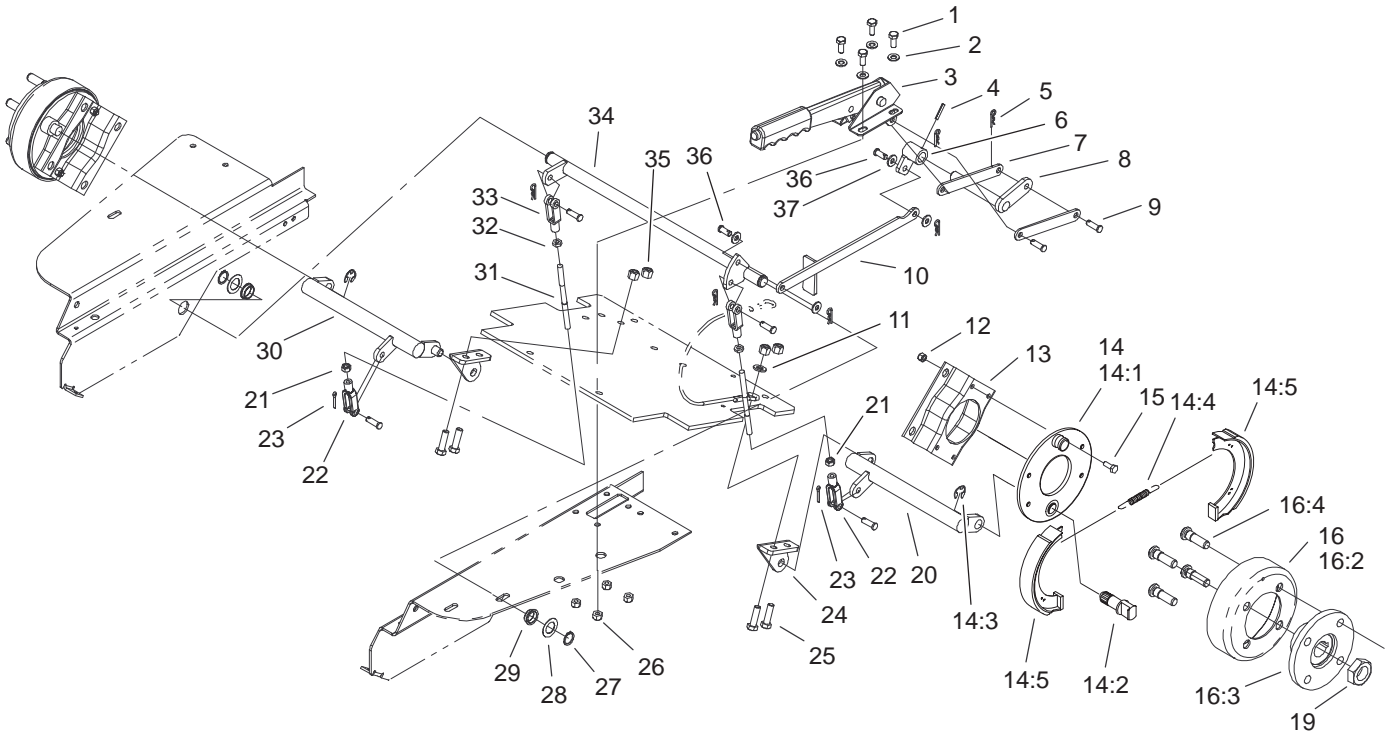
Ref. No.	Part No.	Qty.	Description
23	98-1956	1	Control – Choke
24	3220-3	1	Nut-Jam
25	94-4208	1	Hourmeter
26	80-9330	1	Alarm-Audio
26:1	104-5107	1	Nut-Plastic, Knurled
27	66-0120	1	Knob
28	321-4	2	Screw-HH
29	1-633111	1	Switch
30	3290-500	2	Screw-PPH
31	32144-74	2	Screw-TAP
32	3296-29	3	Nut-Lock, NI
33	104-0394	1	Harness – Ofz, Main
33:1	100-4918	2	Diode
34	32105-13	1	Screw-SHH
35	32144-11	2	Screw-TAP



Sheet No.:8

Electrical #2 Assembly

Ref. No.	Part No.	Qty.	Description	Ref. No.	Part No.	Qty.	Description
1	321-4	12	Screw-HH	24	95-7669	1	Switch-Reed, Magnetic
2	3256-22	12	Washer-Flat	25	3296-52	2	Nut-Lock NI
3	100-2440-03	1	Bracket - Emitter	26	104-2443-03	1	Bracket - Switch
4	3250-19	4	Screw-PPH	27	2412-93	1	Clamp-R
5	2412-127	3	Clamp-R	28	98-1324	2	Switch - Interrupter
6	3296-42	11	Nut-Lock, NI	29	322-3	4	Screw-HH
7	98-2367	1	Module-Det, Obstruction	30	3256-23	2	Washer-Flat
8	98-3000-03	1	Bracket - Receiver	31	3296-29	4	Nut-Lock, NI
9	3290-381	4	Tie-Cable	32	94-4797-03	1	Channel-Mount, Switch
10	28-3893	1	Wire ASM	33	94-9460	1	Plate-Mount, Switch
11	92-6287	1	Wire ASM (Negative)	34	3290-124	2	Screw-HH
12	2412-93	6	Clamp-R	35	98-3006	1	Actuator
13	32103-22	4	Nut-Wing	36	3256-12	2	Washer-Flat
14	113010	1	Holddown-Battery	37	3296-9	2	Nut-Lock NI
15	28-8080	1	Boot-Terminal				
16	98-0603	1	Boot-Terminal				
17	104-2492	1	Battery				
17:1	104-4163	1	Decal-Battery				
17:2	104-5091	1	Decal-Battery				
18	94-6146	2	Retainer - Battery				
19	106948	1	Tray-Battery				
20	2412-138	1	R-Clamp				
21	98-3009	1	Conduit - Convolved				
22	32105-28	2	Screw-HH				
23	104-5112	2	Washer-Flat				

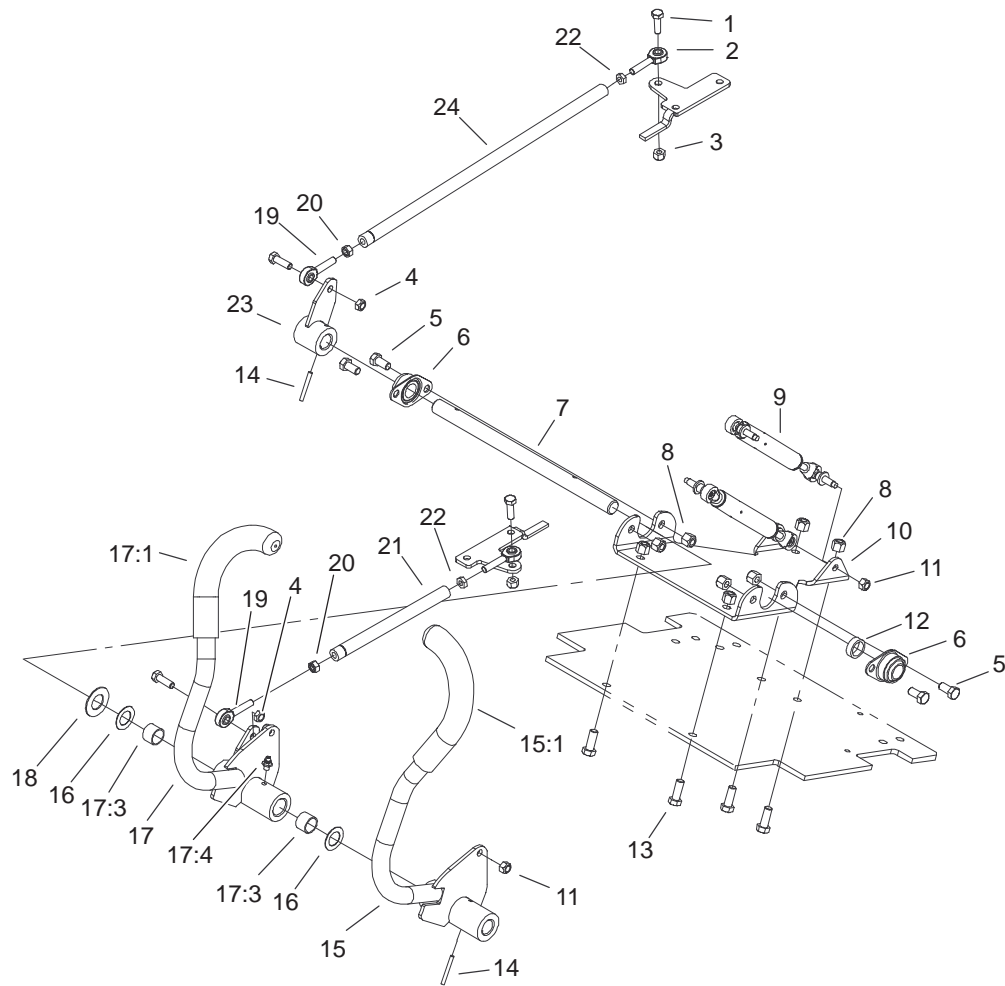


Sheet No.:9

Parking Brake Assembly

Ref. No.	Part No.	Qty.	Description
1	322-3	4	Screw-HH
2	3256-23	4	Washer-Flat
3	94-4602	1	Lever - Brake
4	32121-93	1	Pin-Spiral
5	3290-307	6	Pin-Hair
6	104-7771	1	Brake Hub ASM
7	98-1992	2	Link - Brake
8	98-1990	1	Transfer Shaft ASM
9	283-1	5	Pin-Yoke
10	104-7770	1	Connector Link ASM
11	3256-24	1	Washer-Flat
12	3296-42	8	Nut-Lock, NI
13	84-2000-03	2	Bracket-Brake
14	104-7705	2	Brake ASM
14:1	70-9870	1	Plate-Backing
14:2	104-7707	1	Shaft-Cam, Brake
14:3	104-7706	1	E-Ring, Bowed
14:4	70-9880	2	Spring-Return
14:5	70-9840	2	Shoe-Brake
15	321-4	8	Screw-HH
16	10-6821	2	Brake Drum ASM
16:2	10-6850	1	Drum-Brake
16:3	10-6870-03	1	Hub-Wheel
16:4	85-6540	4	Stud-Drive
19	26-3790	2	Nut-Lock
20	98-1997	1	LH Brake Lever ASM

Ref. No.	Part No.	Qty.	Description
21	3220-20	2	Nut-Jam
22	98-4367	2	Clevis - Adjustable
23	3272-10	2	Pin-Cotter
24	94-9573-01	2	Mount-Lever, RH Brake
25	323-7	4	Screw-HH
26	3296-29	4	Nut-Lock, NI
27	32120-72	2	Ring-Snap
28	9202574	2	Washer-Flat
29	106950	2	Bushing
30	98-1998	1	RH Brake Lever ASM
31	98-1996	2	Rod - Brake
32	3220-2	2	Nut
33	282-2	2	Yoke
34	98-1988	1	Torsion Shaft ASM
35	3296-39	4	Nut-Lock, NI
36	283-62	3	Pin-Clevis
37	3256-2	4	Washer-Flat

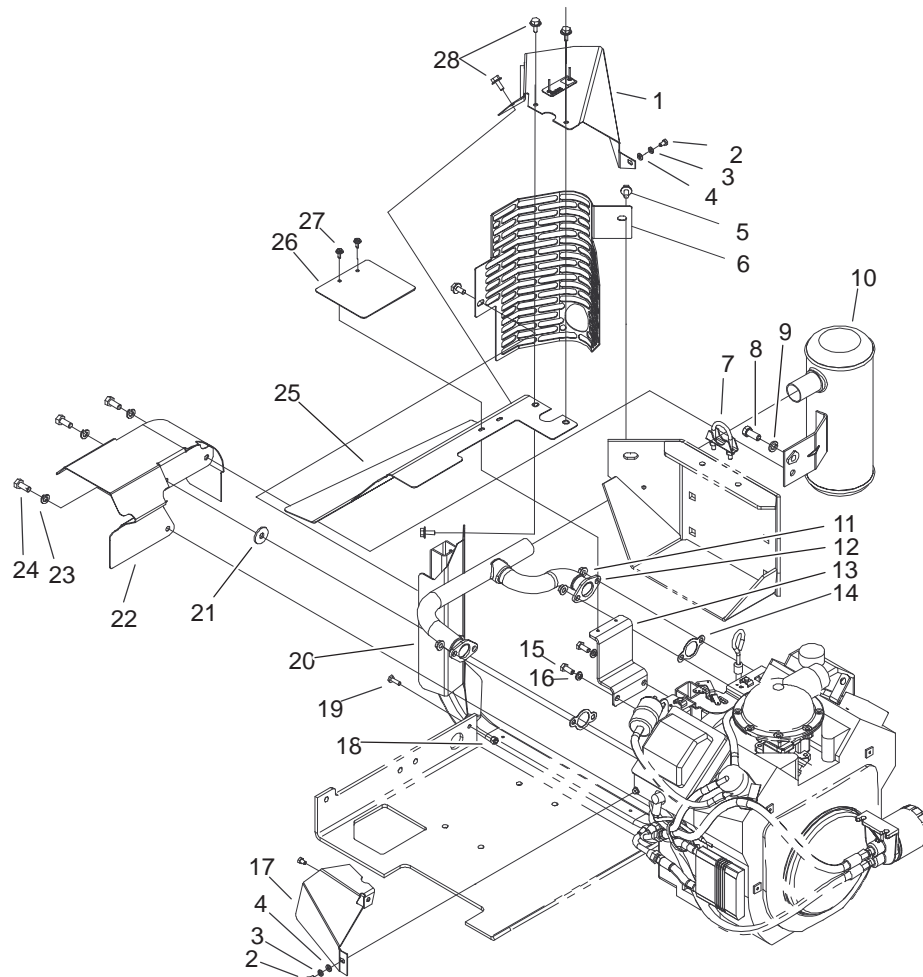


Sheet No.:10

Steering Control Assembly

Ref. No.	Part No.	Qty.	Description
1	322-5	4	Screw-HH
2	2411-52	2	Bearing-Rod End, RH
3	3296-29	2	Nut-Lock, NI
4	3296-47	2	Nut-Lock, NI
5	323-4	4	Screw-HH
6	27-2320	2	Bearing
7	94-9515	1	Shaft - Control
8	3296-39	8	Nut-Lock, NI
9	104-5141	2	Damper-Bidirectional
10	104-5113-03	1	Channel-Mount, Control
11	33024-00	4	Nut-Lock
12	94-9524	1	Spacer - Control
13	323-6	4	Screw-HH
14	32121-103	2	Pin-Spring
15	104-7795	1	LH Control Handle ASM
15:1	94-9490	1	Grip - Cushion
16	9202574	2	Washer-Flat
17	104-5115	1	RH Control Handle ASM
17:1	94-9490	1	Grip - Cushion
17:3	256-76	2	Bushing
17:4	302-5	1	Fitting-Grease
18	3256-39	1	Washer-Flat
19	2411-53	2	Bearing-Rod End, LH

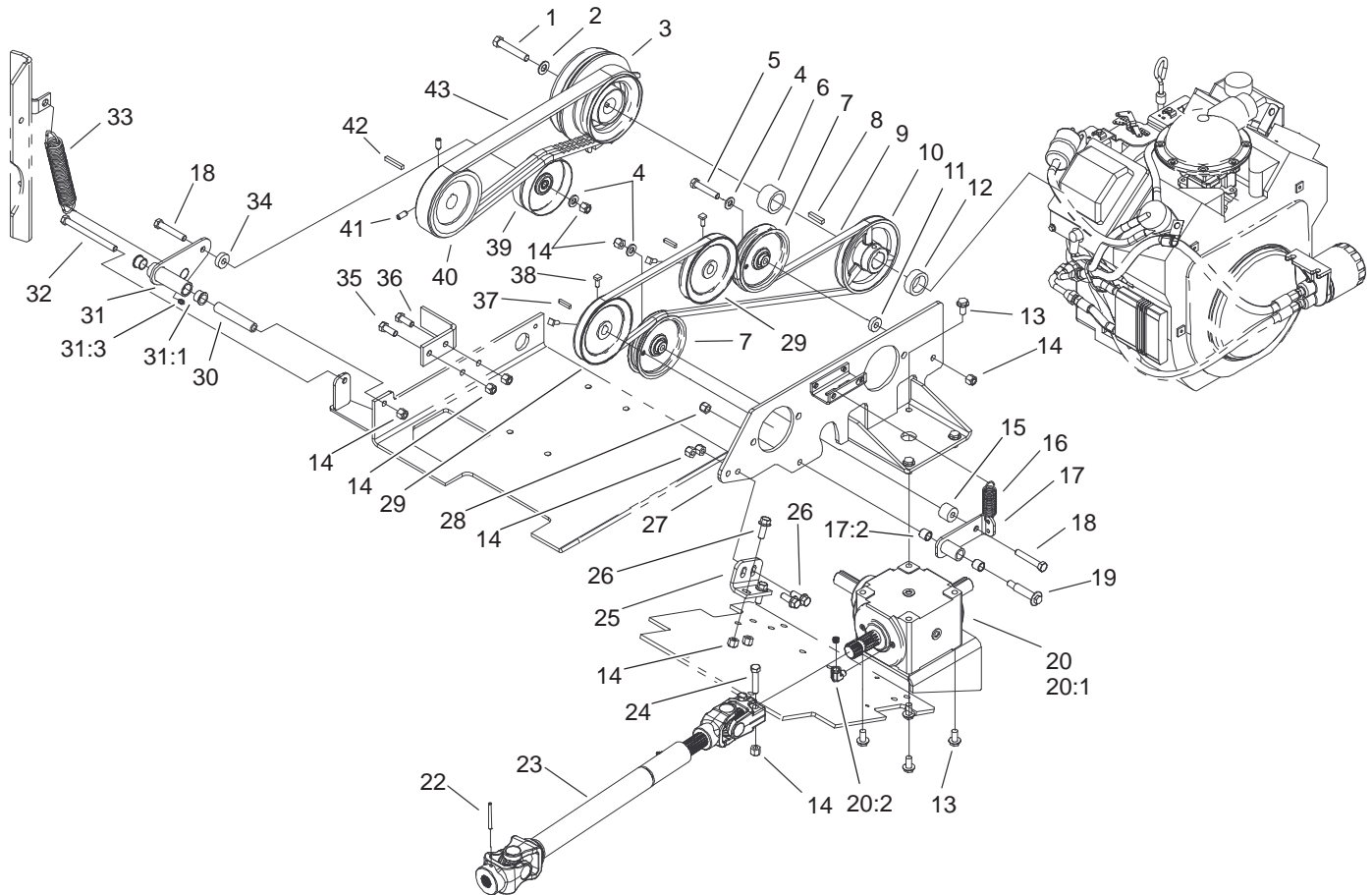
Ref. No.	Part No.	Qty.	Description
20	3220-20	2	Nut-Jam
21	94-4717	1	Rod-Control, RH
22	3220-2	2	Nut
23	94-9594-03	1	Control Hub ASM
24	94-4718	1	Rod-Control, LH



Sheet No.:12

Exhaust Assembly

Ref. No.	Part No.	Qty.	Description	Ref. No.	Part No.	Qty.	Description
1	98-4368	1	Rear Heat Baffle ASM	26	98-1979	1	Panel-Access, Baffle
2	42-9430	2	Bolt-Washer	27	98-4386	2	Screw-Torx
3	48-8020	2	Washer-Spring	28	3234-4	4	Screw-HHF
4	33093-00	2	Washer-Flat				
5	32144-14	1	Screw-HWH				
6	98-1980-03	1	Guard - Muffler				
7	2112-11	1	Clamp-Muffler				
8	324-4	1	Screw-HH				
9	3253-6	1	Washer-Lock				
10	94-9495	1	Muffler				
11	92-6780	4	Nut-HF				
12	94-9494	1	Manifold				
13	94-9561	1	Bracket-Shield, Manifold				
14	93-0350	2	Gasket-Exhaust				
15	33114-020	2	Screw-HH				
16	3253-4	2	Washer-Lock				
17	98-1349	1	Baffle - Heat, Front				
18	3296-42	1	Nut-Lock, NI				
19	321-4	1	Screw-HH				
20	98-1329	1	Baffle - Heat, Middle				
21	2844	1	Washer				
22	98-1326	1	Baffle - Heat, Lower				
23	3253-5	3	Washer-Lock				
24	323-5	3	Screw-HH				
25	98-1967	1	Top Heat Baffle ASM				



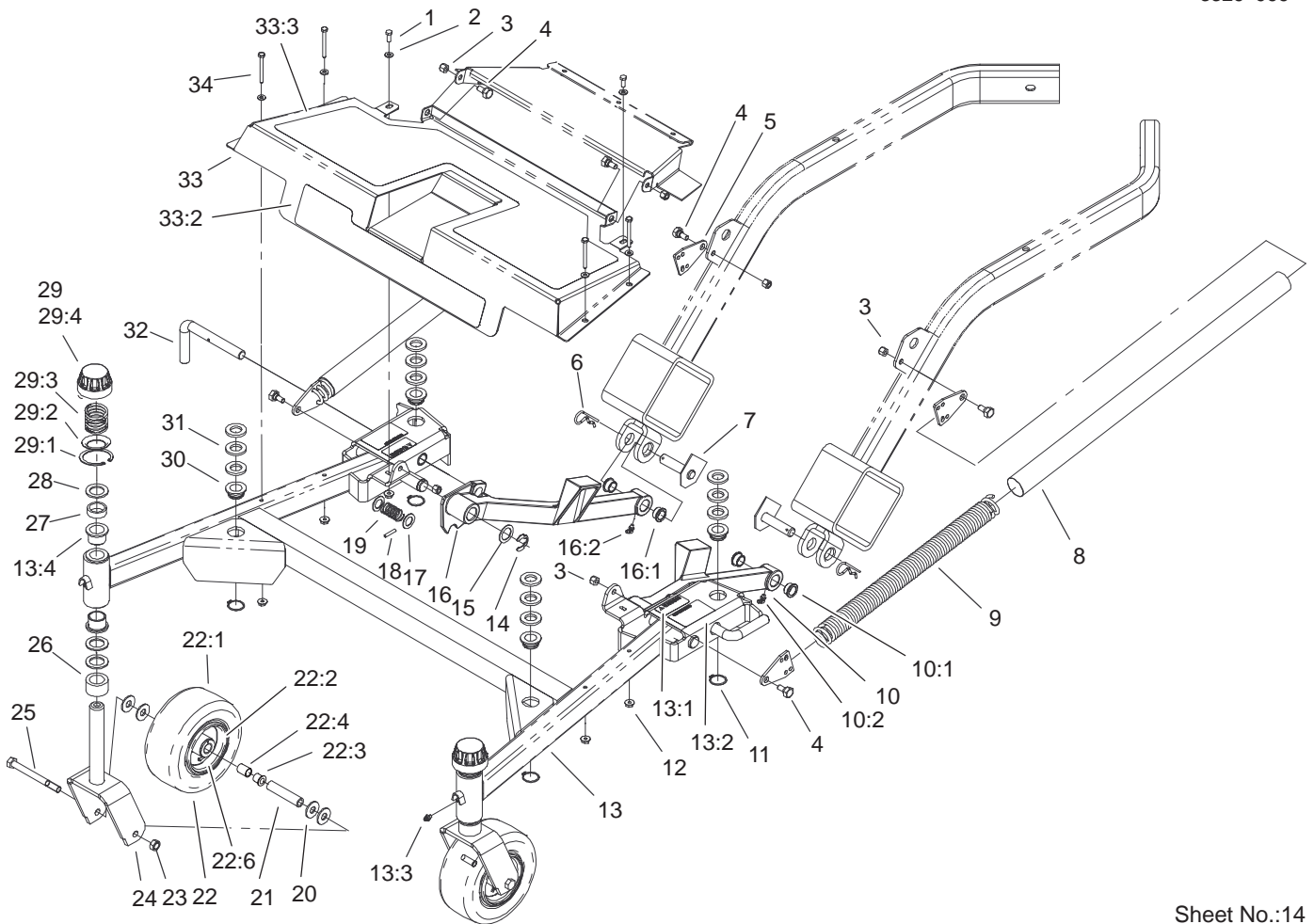
Sheet No.:13

PTO / Hydro Drive Assembly

Ref. No.	Part No.	Qty.	Description
1	3212-10	1	Screw-HH
2	3256-25	1	Washer-Flat
3	104-7756	1	Clutch-Magnetic, Electro
4	3256-24	3	Washer-Flat
5	323-10	1	Screw-HH
6	94-4689	1	Spacer- Shaft, Engine
7	93-1622	2	Pulley-Idler
8	13-2840	1	Key-Square
9	94-4607	1	V-Belt
10	94-4628	1	Pulley-Engine
11	9202204	1	Washer
12	94-4688	1	Spacer-Shaft, Engine
13	3234-1	8	Screw-HHF
14	3296-39	13	Nut-Lock, NI
15	94-4792	1	Spacer-Arm, Idler
16	94-9599	1	Spring - Extension
17	95-1950	1	Idler Arm ASM
17:2	256-154	2	Bushing
18	323-11	2	Screw-HH
19	27-6230	1	Bolt-Wheel
20	105-3114	1	Gearbox ASM
☆20:1		1	Gearbox-T
20:2	2811-7	1	Elbow
22	32121-48	1	Pin-Spring
23	94-4722	1	Shaft - Drive

Ref. No.	Part No.	Qty.	Description
24	323-19	2	Screw-HH
25	94-4787-03	1	Mount - Plate, Pump
26	3234-11	4	Screw-HHF
27	104-7785-03	1	Pump Mount ASM
28	3296-6	1	Nut-Lock, NI
29	80-8170	2	Pulley-Pump, Traction
30	100-5837	1	Spacer-Idler
31	100-5840	1	Idler Arm ASM
31:1	109859	2	Bushing
31:3	302-58	1	Fitting-Grease
32	323-23	1	Screw-HH
33	104-7794	1	Spring - Extension
34	94-4685	1	Spacer - Idler
35	323-6	2	Screw-HH
36	98-1301-03	1	Stop - Clutch
37	80-6090	2	Key-Pump
38	3241-5	4	Screw-Set
39	104-7791	1	Pulley-Flat
40	94-4629	1	Pulley - Clutch
41	3246-6	2	Screw-Set, HSH
42	67-7490	1	Key
43	99-0219	1	Belt-V, Banded

☆ Not serviced separately



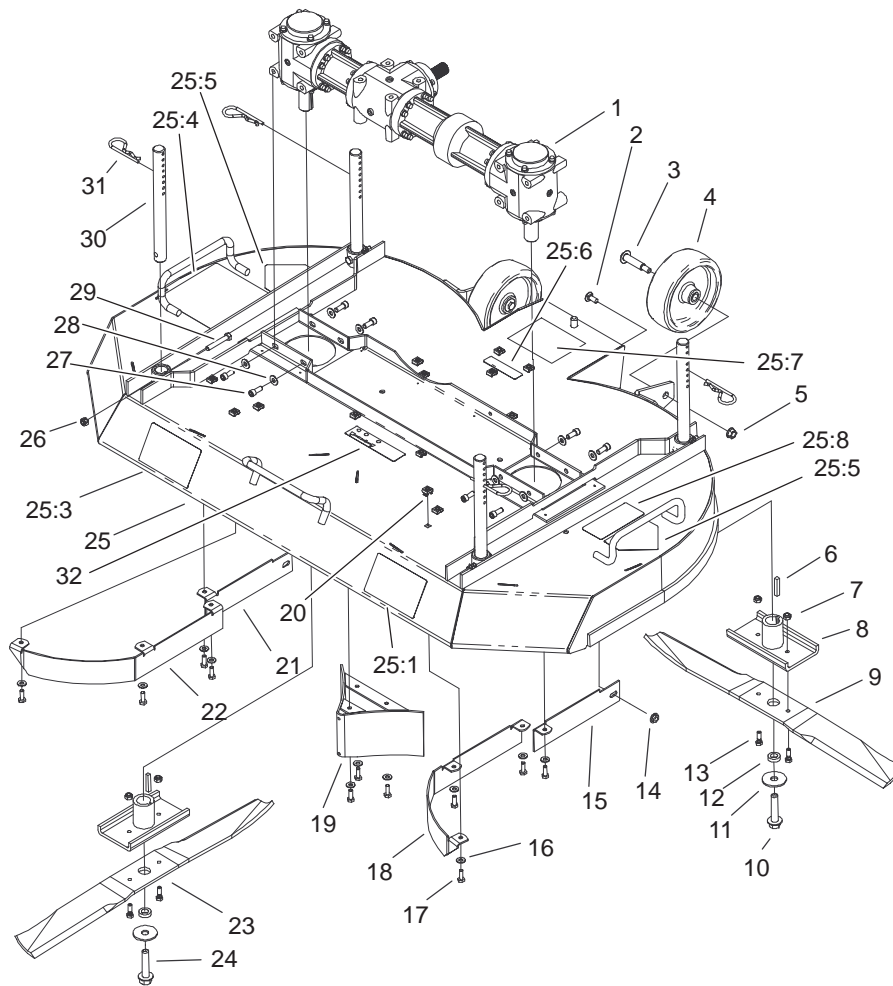
Sheet No.:14

Carrier Frame Assembly

Ref. No.	Part No.	Qty.	Description
1	321-4	2	Screw-HH
2	3256-22	6	Washer-Flat
3	3296-39	6	Nut-Lock, NI
4	46-3380	6	Bolt-Shoulder
5	94-4750	4	Plate - End, Spring
6	3290-343	2	Pin-Hair
7	94-4755	2	Pivot Pin ASM
8	94-9550	2	Cover - Spring
9	94-4664	2	Spring - Extension
10	105-1645	1	Pusharm ASM-LH
10:1	27-9080	2	Bearing-Flange
10:2	302-60	1	Fitting-Lube
11	32120-33	4	Ring-Retaining
12	32128-33	6	Nut-HF
13	104-0383	1	Carrier Frame ASM
13:1	93-6696	2	Decal-Spring, Loaded
13:2	104-0381	2	Decal - HOC, Ce
13:3	302-5	2	Fitting-Grease
13:4	94-1291	4	Bushing-Special
14	32151-91	2	Ring-Retaining
15	9202514	2	Washer
16	105-1646	1	Pusharm ASM-RH
16:1	27-9080	2	Bearing-Flange
16:2	302-60	1	Fitting-Lube
17	9202254	4	Washer
18	32121-79	2	Pin-Roll

Ref. No.	Part No.	Qty.	Description
19	98-1339	2	Spring - Compression
20	3256-6	8	Washer-Flat
21	68-8980	2	Spanner-Tire
22	99-1268	2	Castor Wheel ASM
22:1	93-9939	1	Tire
22:2	100-2348	1	Rim ASM
22:3	62-5580	2	Bearing-Outside
22:4	62-5570	1	Bearing-Roller
*22:5	100-5832	1	Tube W/ Valve
22:6	302-11	1	Fitting-Lube, 45°
23	32153-5	2	Nut-Lock
24	99-0295-01	2	Castor Fork ASM
25	325-19	2	Screw-HH
26	93-1167	2	Spacer - Castor
27	63-0070	2	Spacer
28	3-6781	6	Washer-Thrust
29	92-8862	2	HOC Cap ASM
29:1	92-5581	1	Ring-Retaining
29:2	92-5583	1	Washer-Cap
29:3	92-5584	1	Spring-Compression
29:4	92-8861	1	Cap-HOC
30	1-513336	4	Bushing-Deck
31	1-513338	12	Washer-Flat
32	100-2389	2	Pin - Pivot
33	100-7774	1	Footrest ASM
33:2	100-7770	1	Decal - Z Master, Toro

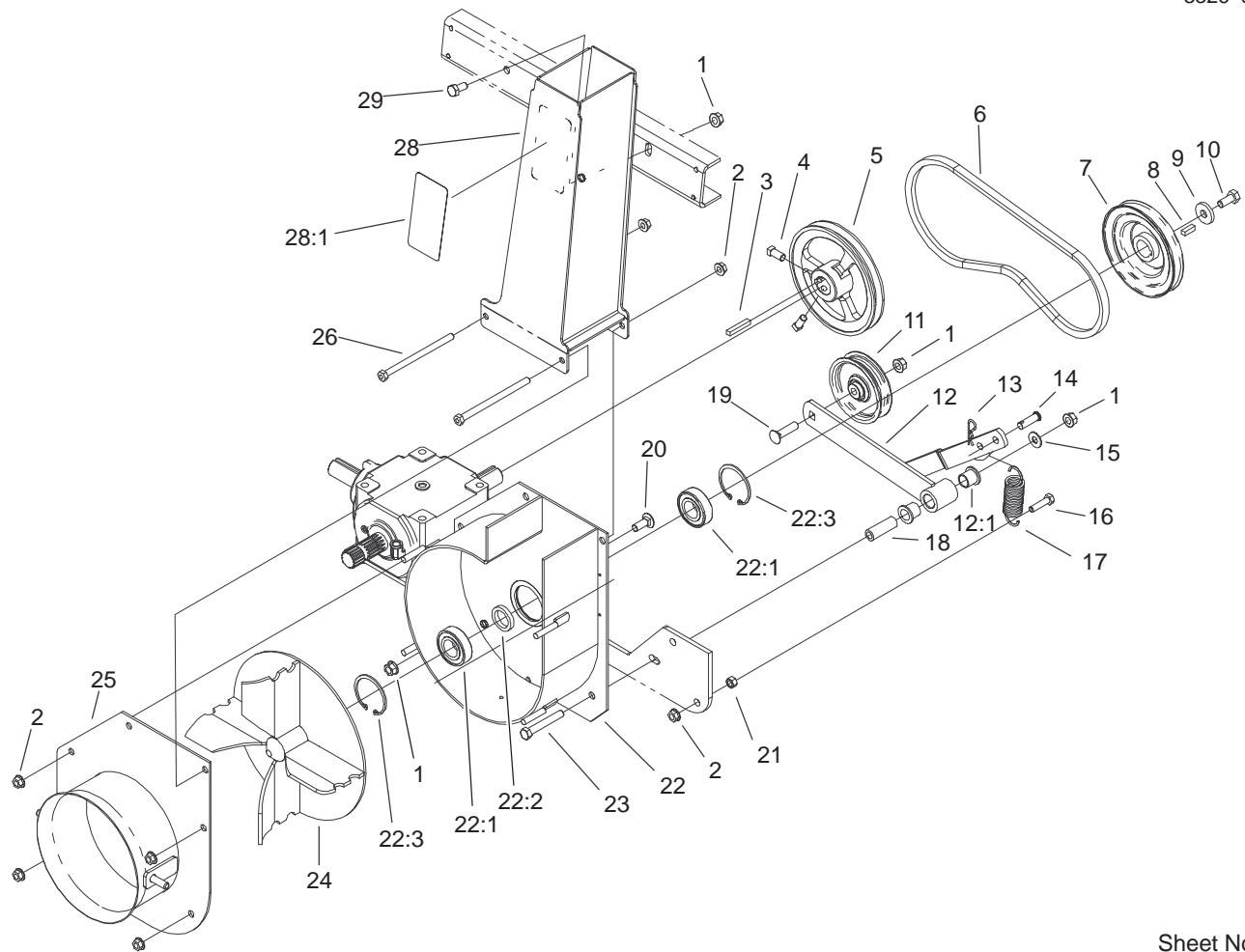
* Not illustrated



Sheet No.:15

Deck Assembly

Ref. No.	Part No.	Qty.	Description	Ref. No.	Part No.	Qty.	Description
1	105-6178	1	Gearbox Service Kit	25	104-0380	1	Deck ASM
2	3230-23	2	Screw-CARR	25:1	100-7788	1	Decal - Dds
3	92-1057	2	Bolt-Shoulder	25:3	105-1629	1	Decal-122cm
4	95-4102	2	Wheel	25:4	98-4358	1	Decal-Danger
5	32128-21	2	Nut-HF	25:5	98-4369	2	Decal-Warning
6	67-7490	2	Key	25:6	100-3613	1	Decal-Warning
7	3296-16	4	Nut-Lock, NI	25:7	93-7010	1	Decal-Danger
8	98-0810-01	2	Blade Retainer ASM	25:8	98-4363	1	Decal-Torque, Blade Bolt
9	99-4942	1	Blade - 25", LH	26	3296-29	4	Nut-Lock, NI
10	92-5816	1	Bolt-Blade	27	104-0356	8	Screw - HSH
11	86-1990	2	Washer	28	100-2400	8	Washer - Hard
12	99-0217	2	Spacer	29	322-10	4	Screw-HH
13	99-0283	4	Bolt - Shear	30	100-2393	4	Pin - Deck
14	32128-13	2	Nut-HF	31	3290-256	4	Pin-Hair
15	104-0388-01	1	Bracket-Discharge, LH	32	105-9350	1	Decal - Gearbox Lube, Ofz
16	3256-22	15	Washer-Flat				
17	321-4	15	Screw-HH				
18	98-3015-01	1	Baffle - LH				
19	100-9655-01	1	Center Baffle ASM				
20	32115-5	15	Nut-Retained				
21	104-0389-01	1	Bracket-Discharge, RH				
22	98-3016-01	1	Baffle - RH				
23	99-4941	1	Blade - 25", RH				
24	104-2444	1	Bolt-Blade, LH Thread				

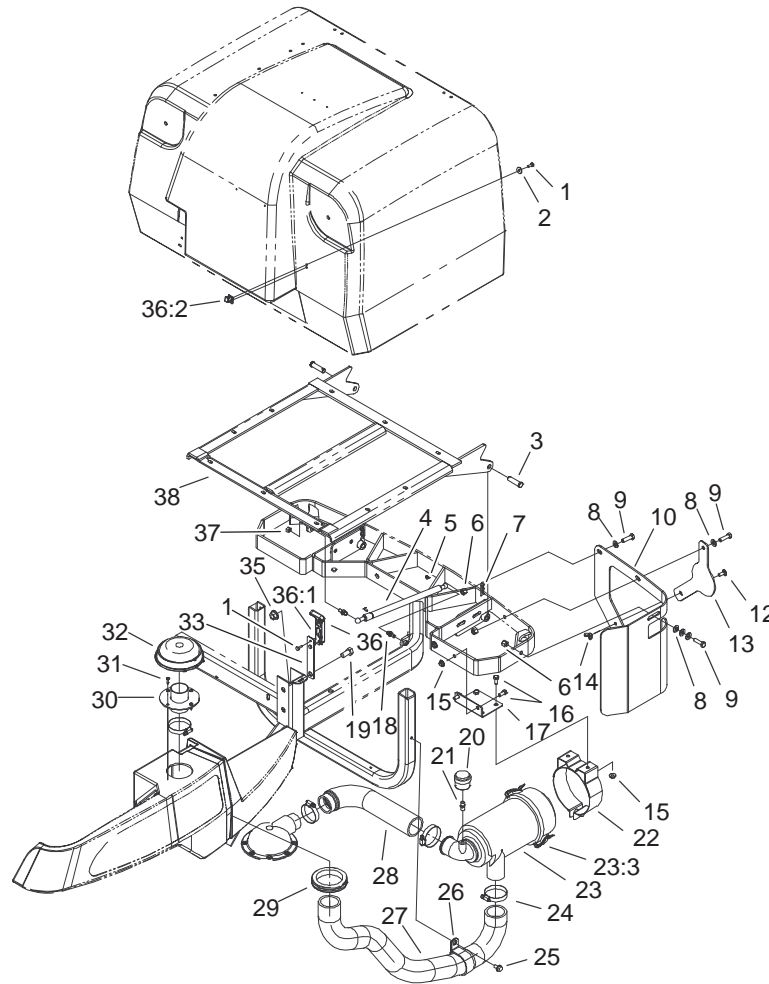


Sheet No.:17

Blower Assembly

Ref. No.	Part No.	Qty.	Description
1	32128-21	4	Nut-HF
2	32128-25	7	Nut-Flange
3	67-7490	1	Key
4	3242-4	2	Screw-Set, SQH
5	98-4392	1	Pulley-Gearbox
6	98-4393	1	V-Belt
7	105-3108	1	Pulley
8	20-9540	1	Key
9	65-8680	1	Washer - Thrust, Plain
10	323-5	1	Screw-HH
11	56-4920	1	Pulley-Idler
12	105-1626	1	Idler Arm ASM
12:1	256-90	2	Bushing-Flange
13	3290-467	1	Pin-Hair
14	283-2	1	Pin-Clevis
15	3256-3	1	Washer-Flat
16	322-6	1	Screw-HH
17	67-1440	1	Spring-Extension
18	95-6448	1	Spacer
19	3231-4	1	Screw-CARR
20	3231-2	1	Screw-CARR
21	3217-6	1	Nut-Hex
22	105-1627	1	Blower Housing ASM
22:1	251-82	2	Bearing-Ball
22:2	95-6427	1	Spacer - Bearing
22:3	32120-8	2	Ring-Snap

Ref. No.	Part No.	Qty.	Description
23	323-12	1	Screw-HH
24	99-0296-03	1	Impeller ASM
25	100-7795-03	1	Cover ASM
26	322-29	2	Screw-HH
28	105-1662	1	Impeller Chute ASM
28:1	93-7010	1	Decal-Danger
29	323-4	1	Screw-HH

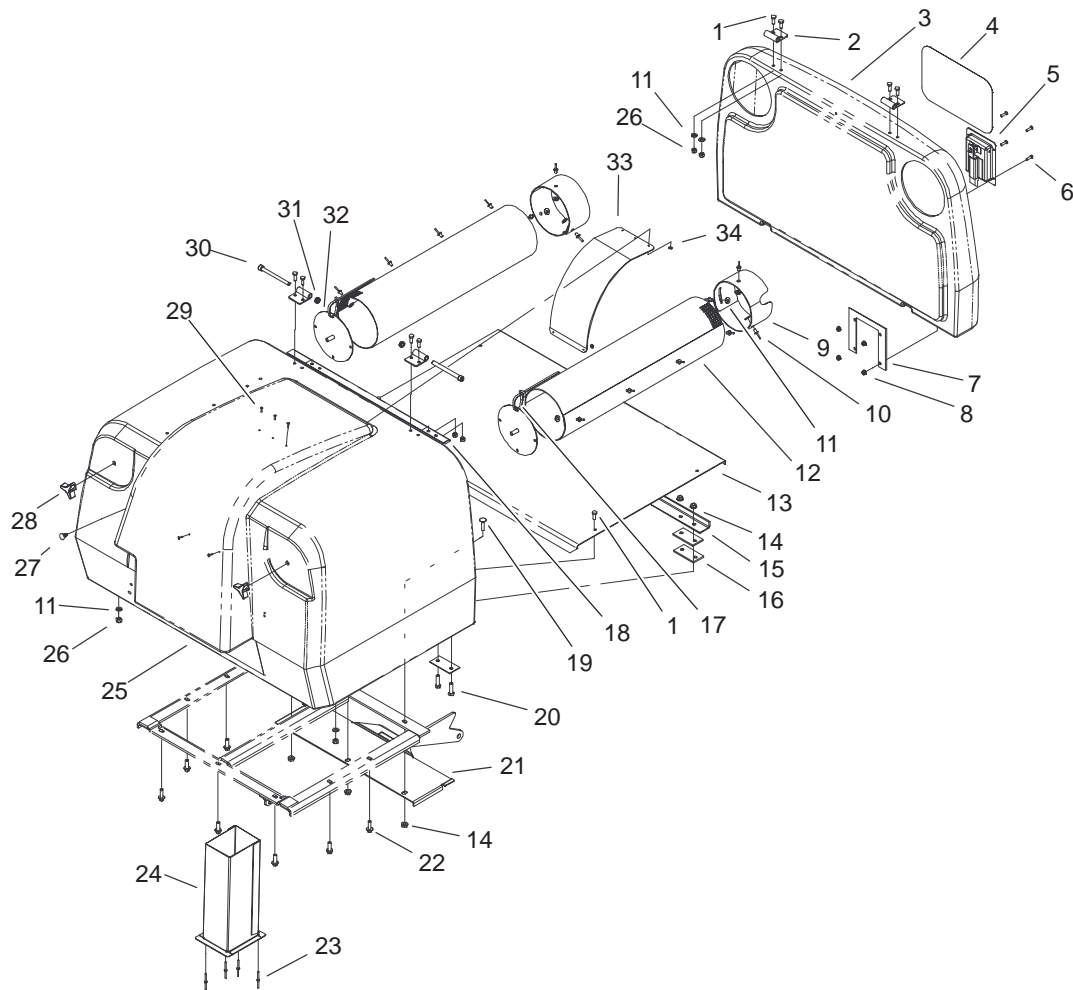


Sheet No.:18

Air Cleaner and Bagger Frame Assembly

Ref. No.	Part No.	Qty.	Description	Ref. No.	Part No.	Qty.	Description
1	3290-134	3	Screw	24	2412-130	4	Clamp-Hose
2	3256-61	1	Washer-Flat	25	32144-14	1	Screw-HWH
3	283-40	2	Pin-Clevis	26	2412-102	1	R-Clamp
4	98-3043	1	Spring-Gas	27	100-2405	1	Hose
5	98-3044	2	Clip-Safety	28	100-2406	1	Hose
6	3296-39	3	Nut-Lock, NI	29	240-8	1	Grommet-Rubber
7	3290-355	2	Pin-Hair	30	100-2411-03	1	Flanged Connector ASM
8	3256-24	5	Washer-Flat	31	32144-124	4	Screw-PPH
9	323-7	3	Screw-HH	32	100-2436	1	Hood
10	104-0355-03	1	Guard - Filter, Air	33	105-1664	1	Plate-Latch
12	3230-23	1	Screw-CARR	35	32128-23	1	Nut-HF
13	104-0364-03	1	Plate - Cover	36	94-5626	1	Latch-Draw, Flexible
14	32103-29	1	Nut-Wing	36:1	100-5806	1	Handle-Latch
15	32128-13	4	Nut-HF	36:2	100-5807	1	Keeper-Latch
16	322-3	4	Screw-HH	37	32152-1	2	Nut-Lock, NI
17	100-2412-03	1	Bracket	38	104-2432-03	1	Grass Bin Frame ASM
18	88-6770	2	Stud-Ball				
19	325-4	1	Screw-HH				
20	104-7755	1	Indicator-Filter, Air				
21	94-1416	1	Indicator Adapter ASM				
22	100-2435	1	Bracket-A/C				
23	100-2434	1	Cleaner-Air				
*23:1	100-4557	1	Filter - Safety				
*23:2	100-4556	1	Element-A/C				
23:3	99-3174	2	Clip-Cleaner, Air				
*23:4	99-3175	1	Valve-Ejector, Dust				

* Not illustrated



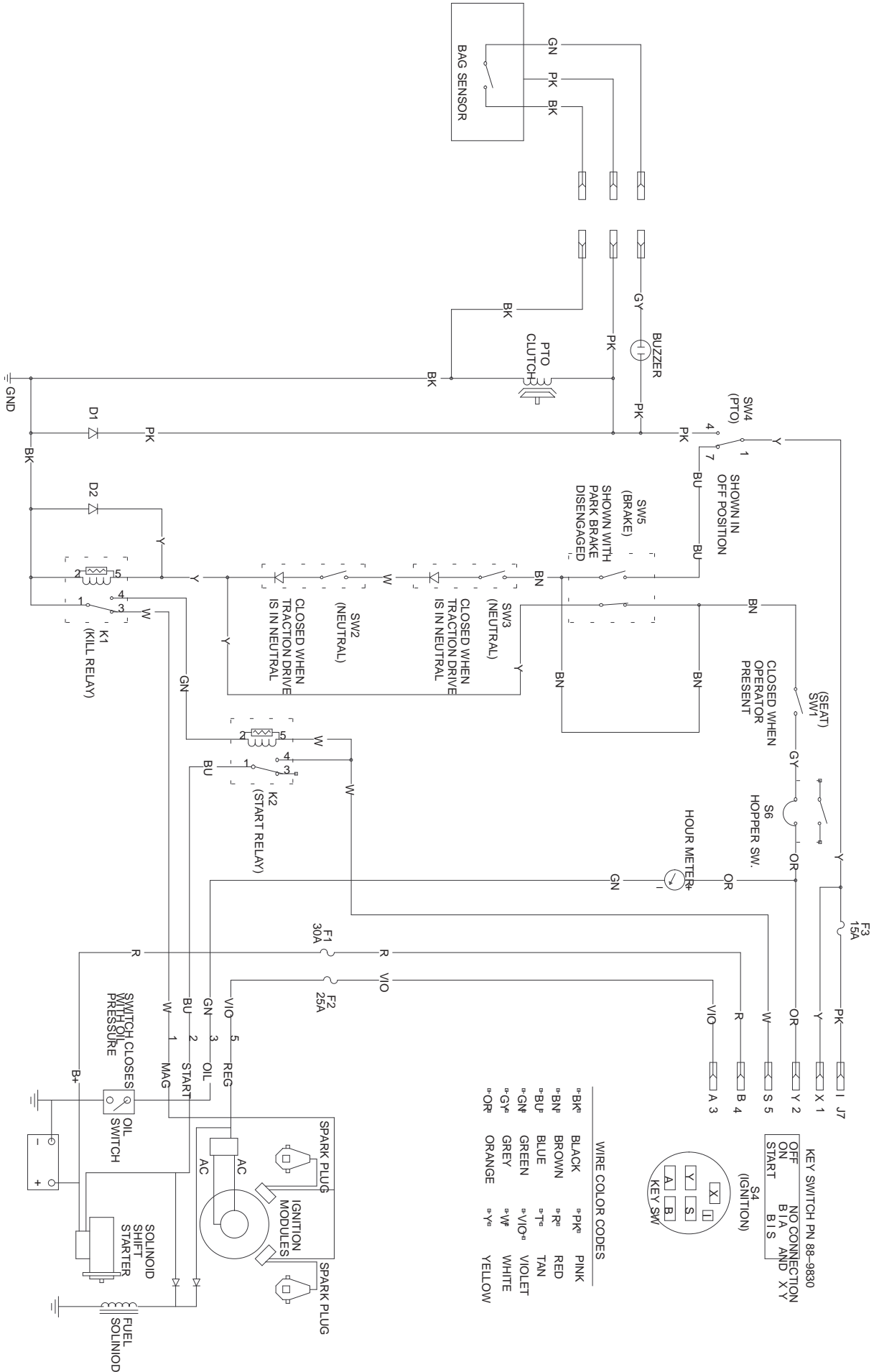
Sheet No.:19

Bagger Assembly

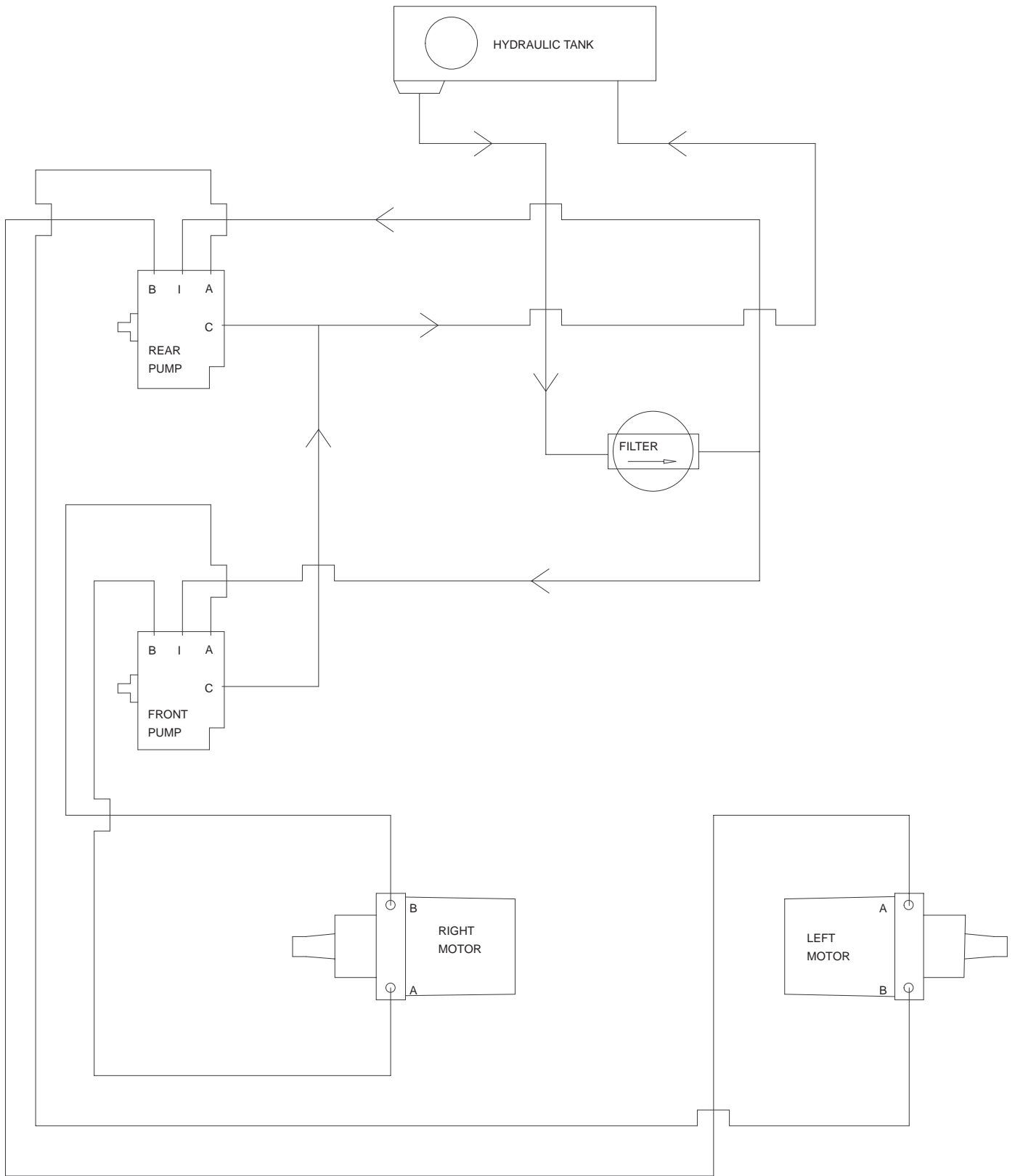
Ref. No.	Part No.	Qty.	Description
1	321-4	10	Screw-HH
2	98-3027-03	4	Hinge
3	100-9617	1	Cover - Bin
4	67-7310	1	Decal-Toro
5	100-9631	1	Lever - Latch
6	104-2408	4	Screw-Head, Button
7	100-9632-03	1	Plate - Latch
8	32128-17	4	Nut-Lock, Flange
9	100-5845	2	Ring - Support
10	3290-412	14	Rivet
11	3256-22	22	Washer-Flat
12	95-6441	2	Screen
13	100-4550-03	1	Floor - Hopper
14	32128-25	14	Nut-Flange
15	98-0849-03	1	Flange - Bin
16	98-3004	6	Spacer
17	3290-378	8	Tie-Cable
18	98-3036-03	1	Angle - Bin
19	3230-3	3	Screw-CARR
20	322-6	4	Screw-HH
21	100-7773-03	1	Plate - Latch
22	3234-17	7	Screw-HHF
23	98-7310	4	Rivet
24	95-6482-03	1	Chute ASM
25	104-2417	1	Bin - Grass
26	3296-42	10	Nut-Lock, NI

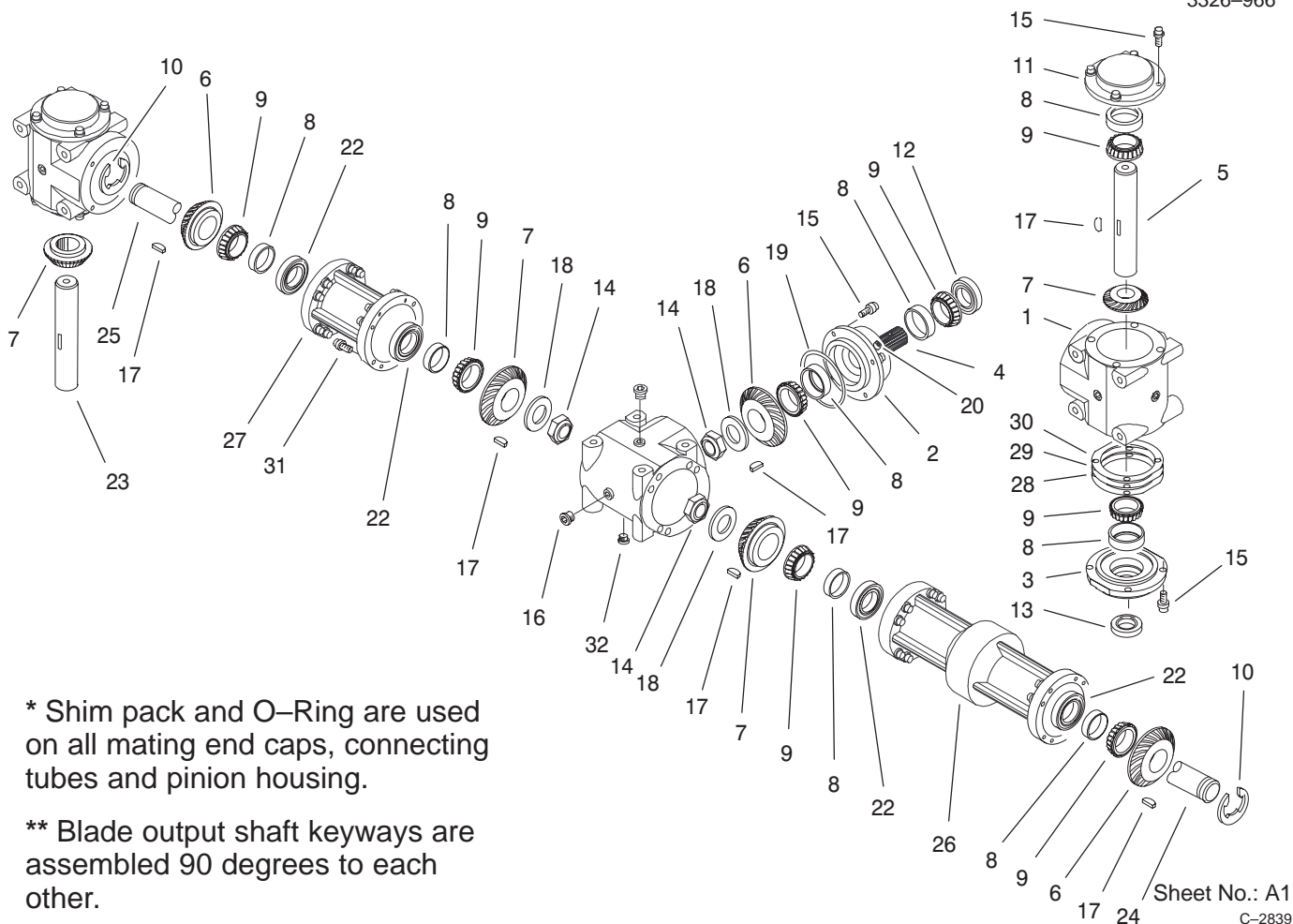
Ref. No.	Part No.	Qty.	Description
27	104-0395	1	Plug - Plastic
28	233-52	2	Knob
29	3269-17	5	Rivet-Pop
30	3274-102	2	Screw-HSH
31	3296-59	2	Nut-Lock, NI
32	95-6444-03	2	Plate ASM
33	100-4552	1	Plate - Wear
34	3256-12	5	Washer-Flat

Electrical Schematic



Hydraulic Schematic

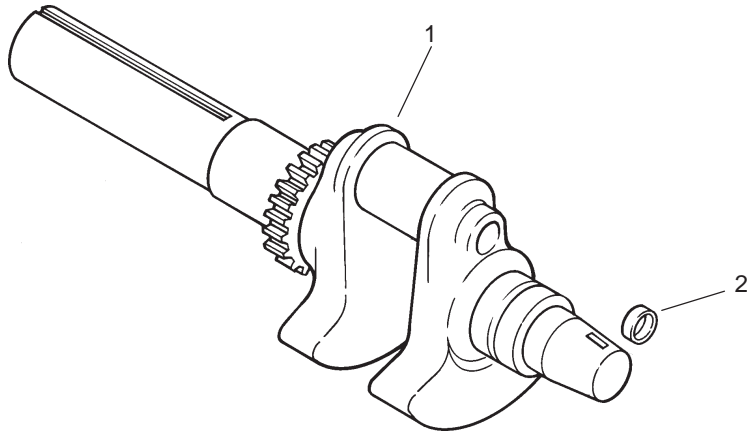




Gearbox Assembly

Ref. No.	Part No.	Qty.	Description
1	100-4564	3	Case
2	100-4565	1	Housing – Pinion
3	100-4566	2	Cap – End, Open
4	100-4567	1	Shaft – Input, Splined
5	105-6134	1	Shaft – Cross, A/D
6	100-4569	3	Gear – 27 Tooth
7	100-4570	4	Gear – 29 Tooth
8	100-4571	10	Bearing-Cup
9	100-4572	10	Bearing-Cone
10	100-4573	2	C71f – Retaining
11	100-4574	2	Cap – End, Closed
12	100-4575	1	Seal
13	100-4576	2	Seal
14	100-4577	3	nut – Jam
15	100-4578	20	Screw
16	100-4579	8	Plug
17	100-4580	7	Key-Woodruff
18	100-4581	3	Washer
19	100-4582	9	O-Ring
20	100-4583	1	Plug
22	100-4585	4	Seal
23	105-6133	1	Shaft – Cross, B/C
24	100-4587	1	Shaft – Connecting, Long
25	100-4588	1	Shaft – Connecting, Short

Ref. No.	Part No.	Qty.	Description
26	100-4589	1	Flange – Connecting, Long
27	100-4590	1	Flange – Connecting, Short
28	100-4591	1	Shim – Brown
29	100-4592	1	Shim – Blue
30	100-4593	1	Shim – Green
31	100-4594	32	Screw
32	100-4595	1	Plug-Magnetic

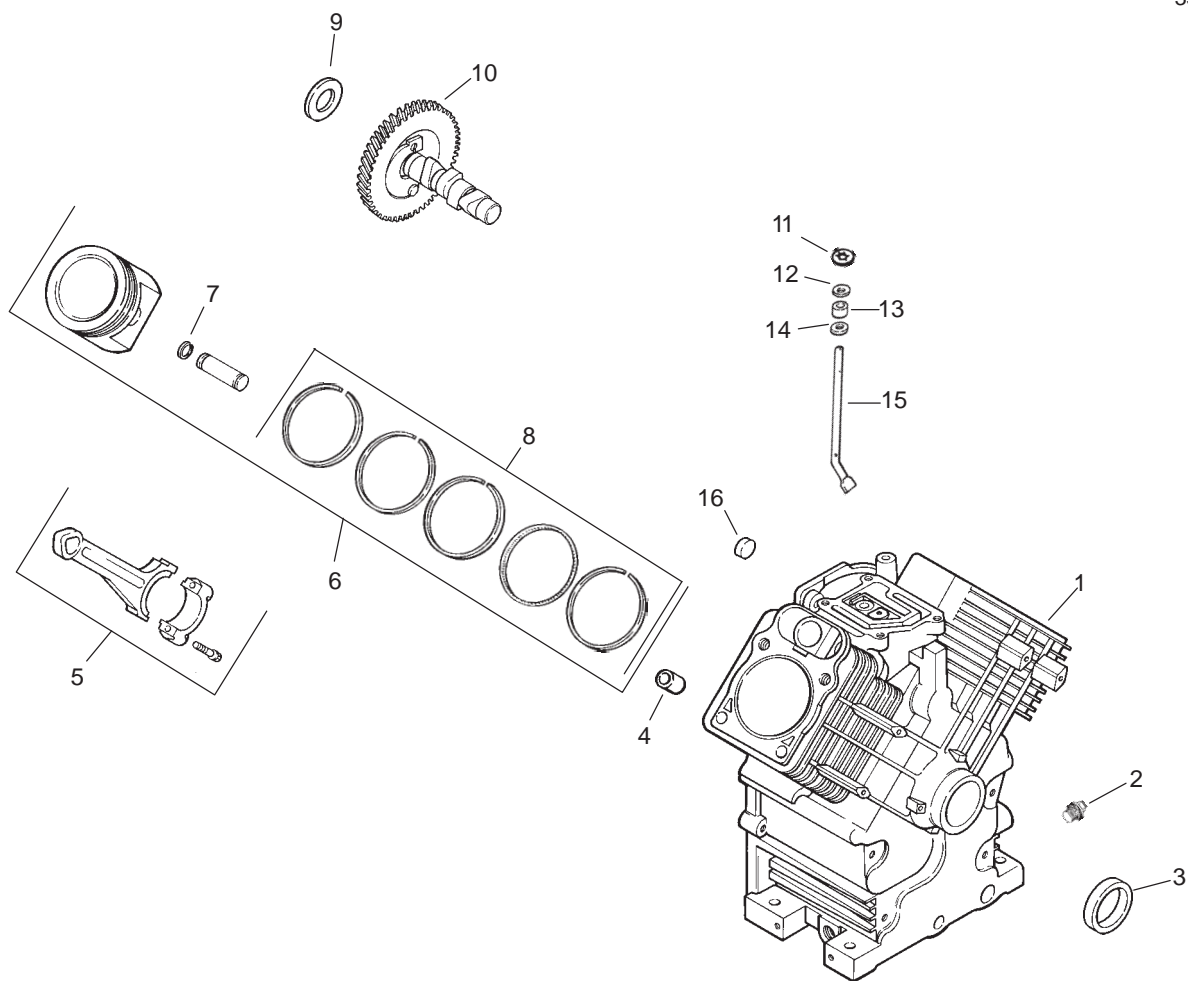


Group 1 – Crankshaft Assembly Kohler CH20S PS-64675

Ref. No.	Part No.	Qty.	Description
1	24 014 72-S	1	Crankshaft (Includes 2)
2	52 139 09-S	1	Plug, cup

Ref. No.	Part No.	Qty.	Description

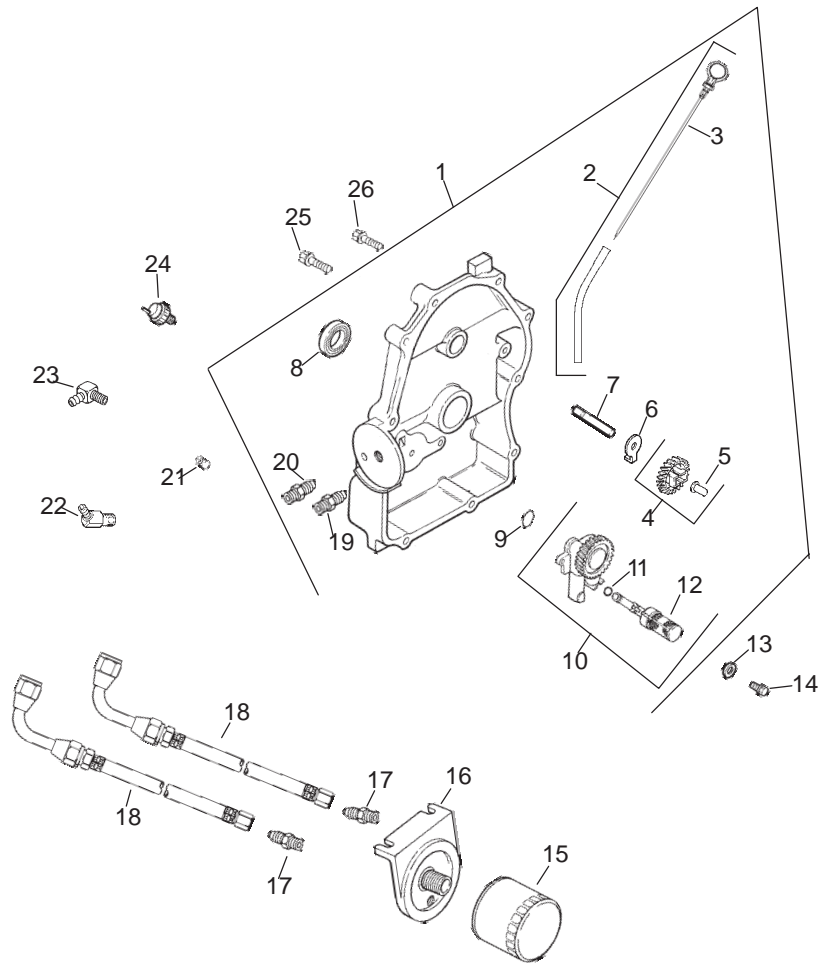
Obtain Parts From Kohler



Group 2 – Crankcase Assembly Kohler CH20S PS-64675

Ref. No.	Part No.	Qty.	Description	Ref. No.	Part No.	Qty.	Description
1	N/A	1	Crankcase (USE: Miniblock 24 782 15)		12 422 11-S	A.R.	Shim, camshaft – green
2	25 139 57-S	2	Plug, square hd. 3/8" N.P.T.F		12 422 12-S	A.R.	Shim, camshaft – gray
3	24 032 01-S	1	Seal, oil front	10	24 012 10-S	1	Camshaft
4	24 380 13-S	6	Pin, locating	11	24 018 09-S	1	Retainer, ring
5	24 067 13-S	2	Connecting Rod (Std.)	12	M-931010-S	1	Washer, nylon (top)
	24 067 14-S	2	Connecting Rod (.25)	13	28 032 09-S	1	Seal, governor cross shaft
6	24 874 17-S	2	Piston w/Ring Set (Std.) (Includes 7, 8)	14	24 468 15-S	1	Washer (bottom)
	24 874 14-S	2	Piston w/Ring Set (.08)	15	24 144 33-S	1	Shaft, governor cross
	24 874 18-S	2	Piston w/Ring Set (.25)	16	52 139 09-S	1	Plug, cup
	24 874 19-S	2	Piston w/Ring Set (.50)				
7	24 018 01-S	4	Retainer, piston pin				
8	24 108 11-S	2	Ring Set (Std. @ .08)				
	24 108 12-S	2	Ring Set (.25)				
	24 108 13-S	2	Ring Set (.50)				
9	12 422 09-S	A.R.	Shim, camshaft – red				
	12 422 13-S	A.R.	Shim, camshaft – black				
	12 422 07-S	A.R.	Shim, camshaft – white				
	12 422 08-S	A.R.	Shim, camshaft – blue				
	12 422 10-S	1	Shim, camshaft – yellow				

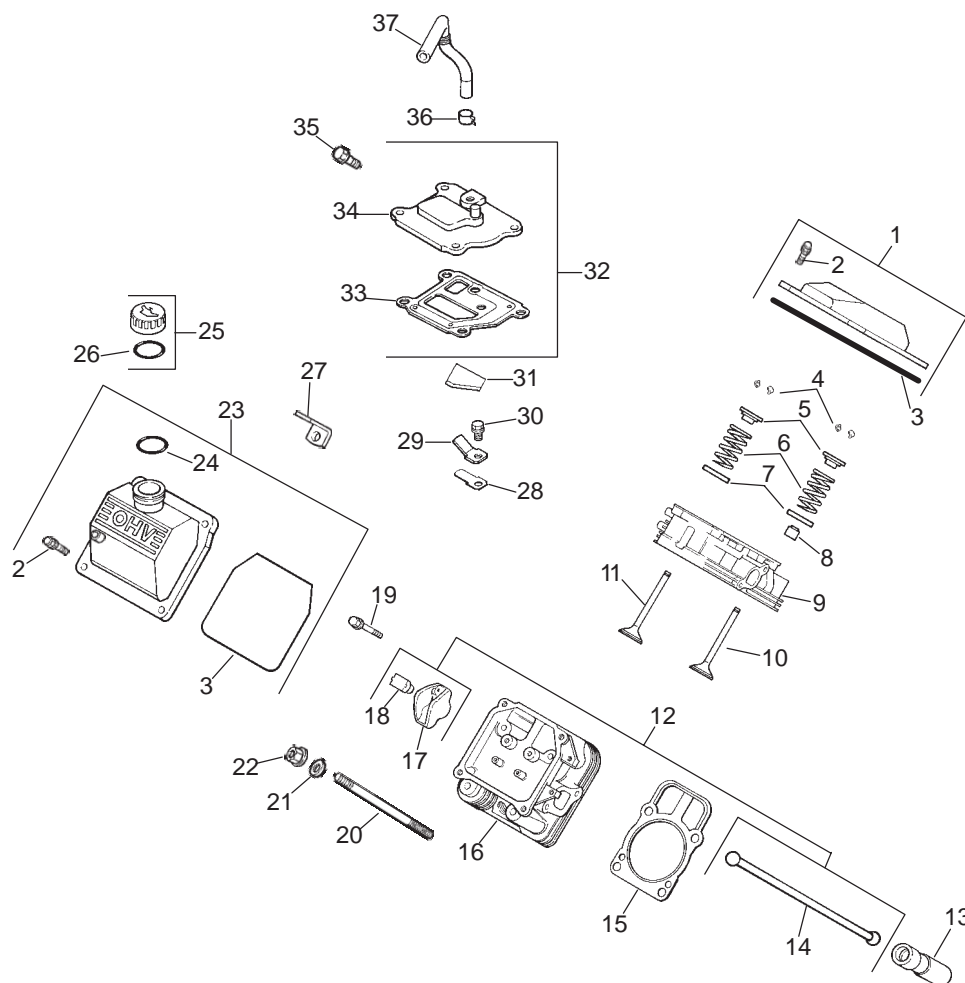
Obtain Parts From Kohler



Group 3 – Oil Pan/Lubrication Assembly Kohler CH20S PS-64675

Ref. No.	Part No.	Qty.	Description	Ref. No.	Part No.	Qty.	Description
1	24 009 96-S	1	Kit, closure plate (Includes 2-12,19,20)	18	24 326 19-S	2	Hose, oil
2	24 755 121-S	1	Kit, dipstick & tube (Includes 3)	19	24 294 09-S	1	Fitting 3/8-18 NPT F
3	24 038 10-S	1	Dipstick	20	24 294 08-S	1	Fitting 1/4-18 NPTF
4	24 043 12-S	1	Kit, governor gear w/pin (Includes 5)	21	25 139 60-S	1	Plug, allen hd. 1/8 pipe
5	12 380 01-S	1	Pin, governor regulating	22	25 155 11-S	2	Connector 1/4-18 NPT, 1/2-20 SAE 45° male flare
6	52 448 02-S	1	Tab, locking	23	25 155 02-S	1	Connector, hose 45°
7	12 144 02-S	1	Shaft, governor gear	24	24 099 03-S	1	Switch, oil pressure
8	52 032 08-S	1	Seal, oil (PTO end)	25	24 086 16-S	9	Screw, hex. flange M8x1.25x45
9	24 153 08-S	1	O-Ring	26	24 086 17-S	1	Screw, hex. flange M8x1.25x45
10	24 393 10-S	1	Oil pump assembly (Includes 11,12)				
11	24 153 01-S	1	O-Ring, oil pick-up				
12	24 381 04-S	1	Pick-up, oil				
13	M-631005-S	2	Washer, plain 6 mm				
14	M-645025-S	2	Screw, hex. flange M6x1.0x25				
15	52 050 02-S	1	Filter, oil				
16	25 029 01-S	1	Adapter, remote oil filter				
17	52 155 03-S	1	Connector, hose (2)				

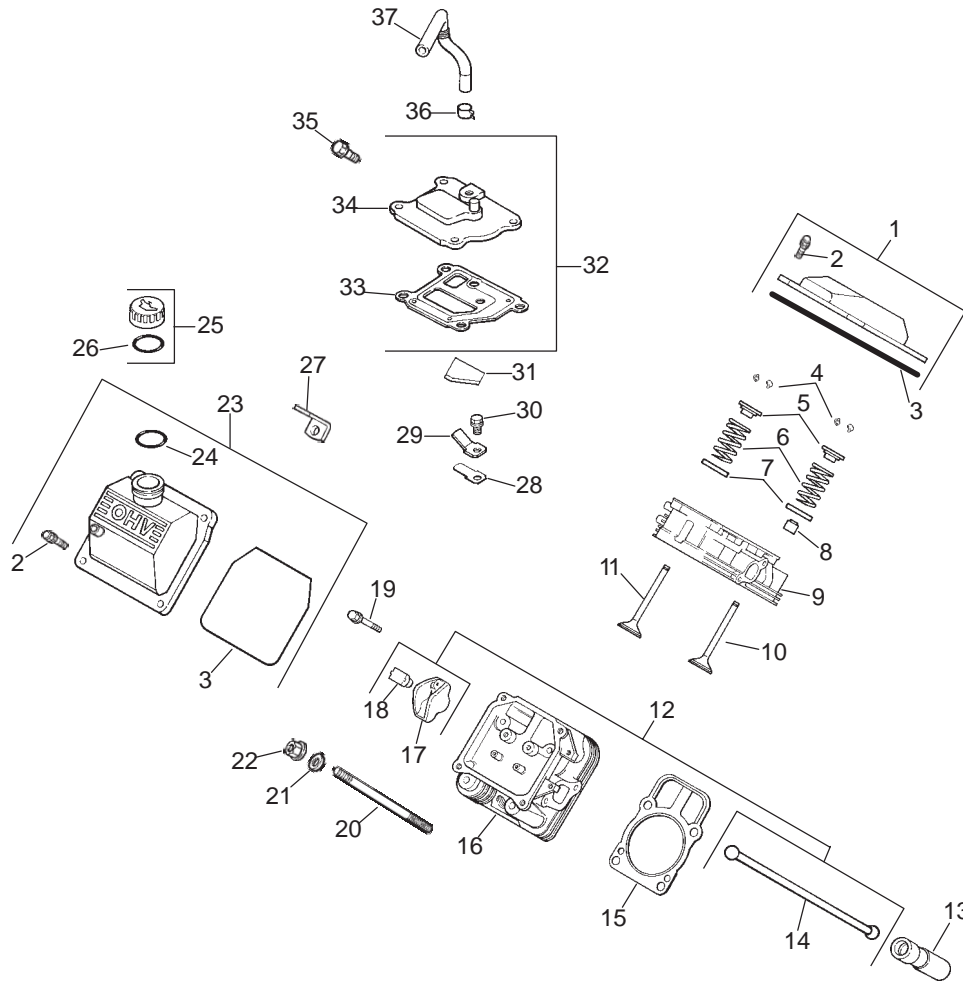
Obtain Parts From Kohler



Group 4 – Head/Valve/Breather Assembly Kohler CH20S PS-64675

Ref. No.	Part No.	Qty.	Description	Ref. No.	Part No.	Qty.	Description
1	24 755 74-S	1	Kit, valve cover – plain (Includes 2,3)	19	M-640034-S	4	Screw, hex. flange M6x1.0x34
2	24 086 32-S	4	Screw, shoulder	20	24 072 09-S	8	Stud, cylinder head M8x1.25x20, M10x1.5x33, 105 mm long
3	24 153 16-S	1	O-Ring, valve cover	21	24 468 16-S	8	Washer, flat 8 mm
4	12 755 03-S	4	Kit, retainer	22	24 100 10-S	8	Nut, hex. flange M8x1.25
5	12 173 01-S	4	Cap, valve spring	23	24 755 75-S	1	Kit, valve cover – oil fill (Includes 2,3,24)
6	24 089 02-S	4	Spring, valve	24	24 153 09-S	1	O-Ring
7	235011-S	4	Retainer, spring	25	24 755 46-S	1	Kit, oil fill cap (Includes 26)
8	66 032 05-S	2	Seal, valve stem	26	12 153 03-S	1	O-Ring, oil fill cap
9	24 318 68-S	1	Head assembly, #1 cylinder	27	24 445 01-S	1	Strap, lifting
10	24 017 01-S	2	Valve, intake (Std.)	28	24 402 03-S	1	Reed, breather
	24 017 02-S	2	Valve, intake (.25)	29	12 018 01-S	1	Retainer, breather reed
11	24 016 01-S	2	Valve, exhaust (Std.)	30	M-545010-S	1	Screw, hex. flange M5x0.8x10
	24 016 02-S	2	Valve, exhaust (.25)	31	24 050 01-S	1	Filter, breather
12	24 755 66-S	1	Kit, valve train (Includes 14,17,18)	32	24 033 01-S	1	Kit, breather (Includes 33,34)
13	25 351 01-S	4	Lifter, valve	33	24 041 23-S	1	Gasket, breather
14	24 411 05-S	4	Rod, push				
15	24 041 08-S	2	Gasket, cylinder head				
16	24 318 71-S	1	Head assembly, #2 cylinder				
17	25 186 01-S	4	Arm, rocker				
18	24 599 01-S	4	Pivot, rocker arm				

Obtain Parts From Kohler

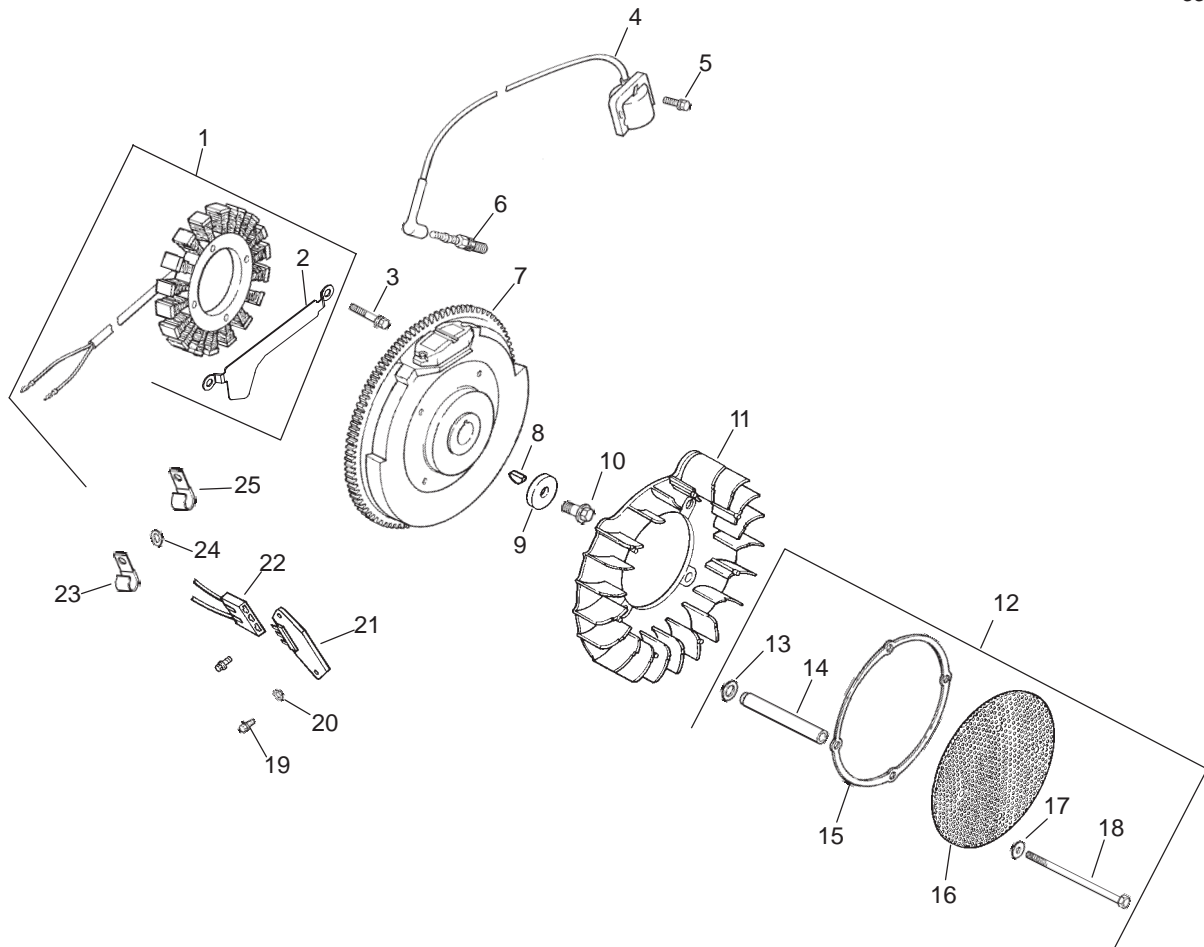


Group 4 – Head/Valve/Breather Assembly (Continued) Kohler CH20S PS-64675

Ref. No.	Part No.	Qty.	Description
35	M-645020-S	4	Screw, hex. flange M6x1.0x20
36	25 237 14-S	1	Clamp, breather
37	24 326 26-S	1	Hose, breather

Ref. No.	Part No.	Qty.	Description

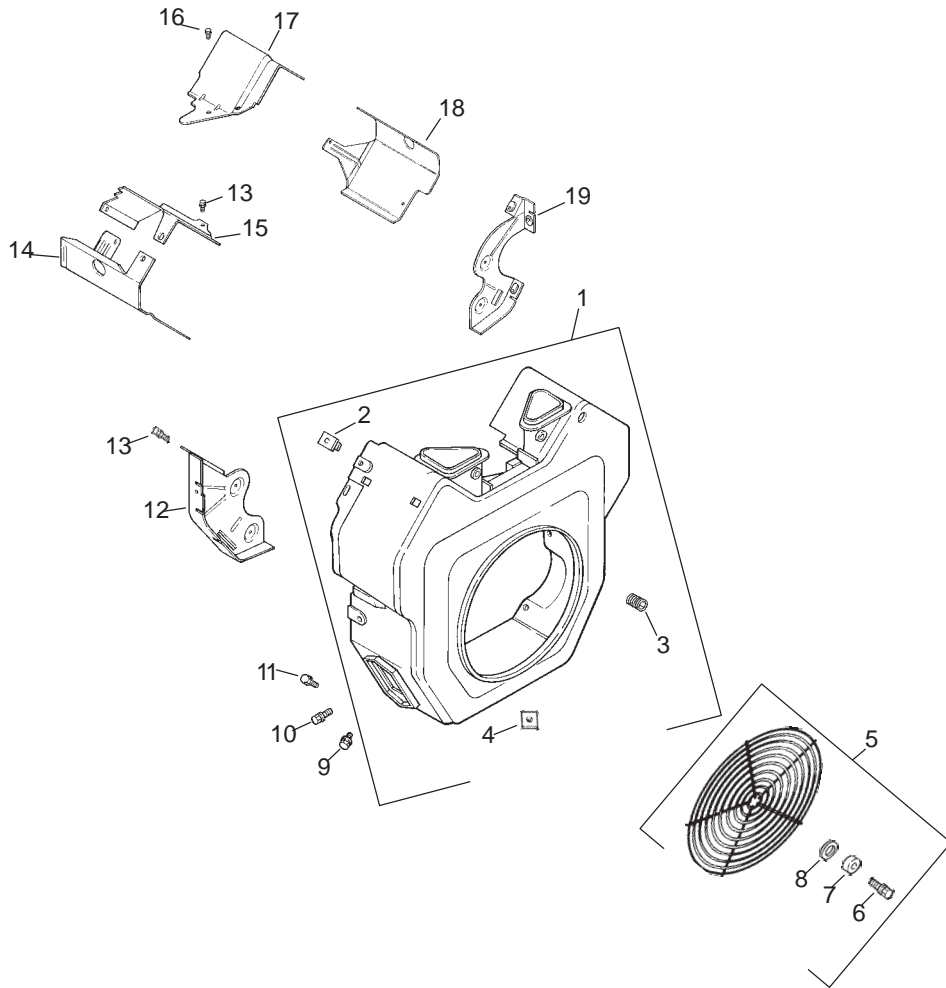
Obtain Parts From Kohler



Group 5 – Ignition/Electrical Assembly Kohler CH20S PS-64675

Ref. No.	Part No.	Qty.	Description	Ref. No.	Part No.	Qty.	Description
1	54 755 09-S	1	Kit, 15 amp stator (Includes 2)	18	M-603100-S	4	Screw, hex. hd. M6x1.0x100
2	24 126 71-S	1	Bracket, stator wire	19	24 086 18-S	2	Screw, phillips hd. 11-16x7/8"
3	M-548025-S	2	Screw, hex. cap M5x0.8x25	20	X-25-92-S	2	Washer, plain 3/16"
4	24 584 01-S	2	Module, ignition	21	25 403 03-S	1	Rectifier-regulator 15 amp
5	M-545020-S	4	Screw, hex. flange M5x0.8x20	22	236602-S	1	Connector ☐
6	12 132 06-S	2	Spark Plug	23	235173-S	1	Clip, cable
7	24 025 04-S	1	Flywheel	24	X-25-63-S	1	Washer, plain 1/4"
8	X-42-15-S	1	Key	25	48 154 02-S	1	Clip, cable
9	12 468 03-S	1	Washer, plain 3/8"	NOT ILLUSTRATED			
10	12 086 14-S	1	Screw, hex. flange M10x1.5x46	24 518 12-S	1	Lead, black, (5" – 12 gauge – insulated grip barrel eyelet terminals)	
11	24 157 03-S	1	Fan	24 176 40-S	1	Harness, wiring	
12	24 755 79-S	1	Kit, chopper screen (Includes 13-18 & 41 037 10-S)	25 454 03-S	2	Tie, cable	
13	24 468 11-S	4	Washer, spring 10 mm	25 086 43-S	1	Screw, set	
14	24 112 14-S	4	Spacer	X-22-11-S	1	Washer, lock (used to ground rectifier-regulator)	
15	24 141 06-S	1	Ring, support	41 037 10-S	1	Nameplate, service	
16	24 162 25-S	1	Screen, grass				
17	X-25-53-S	4	Washer, plain 1/4"				

Obtain Parts From Kohler

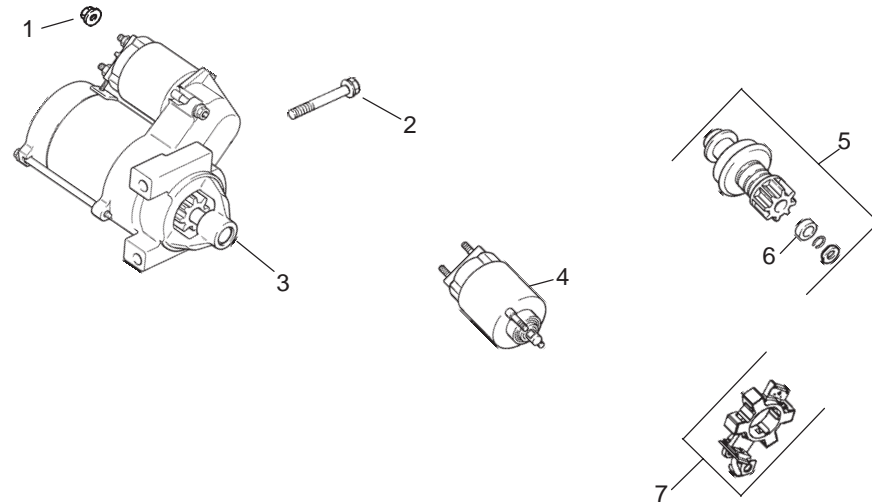


Group 6 – Blower Housing Assembly Kohler CH20S PS-64675

Ref. No.	Part No.	Qty.	Description
1	24 027 119-S	1	Housing, blower assembly (Includes 2-4 & 24 332 01-S)
2	24 100 01-S	2	Nut, plastic
3	25 086 43-S	1	Screw, set
4	24 100 02-S	2	Nut, plastic (2)
5	24 755 94-S	1	Kit, guard (Includes 6-8 & 24 332 01-S)
6	24 086 39-S	3	Screw, pan hd.
7	24 112 09-S	3	Spacer
8	24 468 10-S	3	Washer, flat
9	M-551016-S	1	Screw, hex. flange M5x0.8x16
10	M-545016-S	3	Screw, hex. flange M5x0.8x16
11	M-545020-S	4	Screw, hex. flange M5x0.8x20
12	24 146 16-S	1	Plate, backing – #2 side
13	M-645016-S	6	Screw, hex. flange M6x1.0x16
14	24 063 20-S	1	Baffle, cylinder barrel – #2 side

Ref. No.	Part No.	Qty.	Description
15.	24 063 17-S	1	Baffle, valley – #2 side
16	M-545010-S	2	Screw, hex. flange M5x0.8x10
17	24 063 24-S	1	Baffle, valley – #1 side
18	24 063 58-S	1	Baffle, cylinder barrel – #1 side
19	24 146 20-S	1	Plate, backing – #1 side
NOT ILLUSTRATED			
	24 332 01-S	3	Insert, threaded
	24 113 95-S	1	Decal, HP

Obtain Parts From Kohler

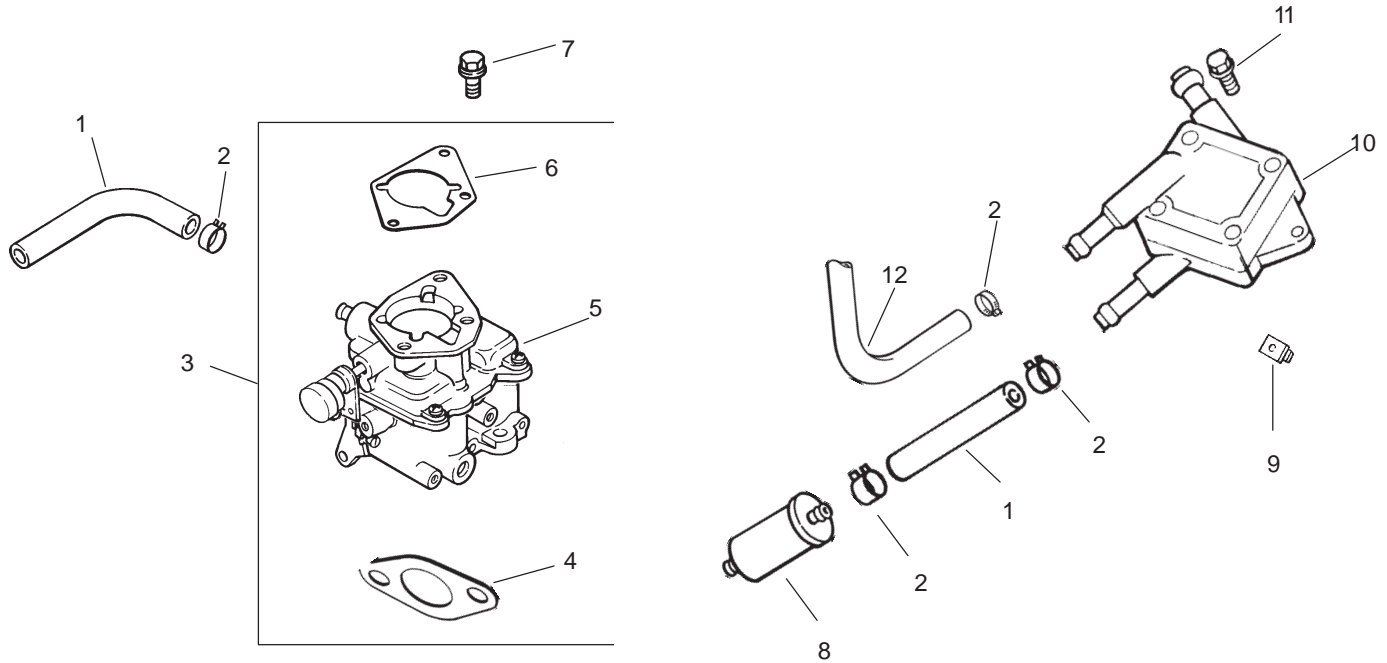


Group 7 – Starter Assembly Kohler CH20S PS-64675

Ref. No.	Part No.	Qty.	Description
1	M-841080-S	1	Nut, hex flange M8x1.25
2	M-839080-S	2	Screw, hex. flange M8x1.25x80
3	25 098 08-S	1	Starter, solenoid shift assembly (Includes 4-7)
4	25 435 04-S	1	Kit, solenoid
5	25 755 33-S	1	Kit, pinion drive (Includes 6)
6	25 141 05-S	1	Ring
7	25 221 01-S	1	Kit, brush

Ref. No.	Part No.	Qty.	Description

Obtain Parts From Kohler

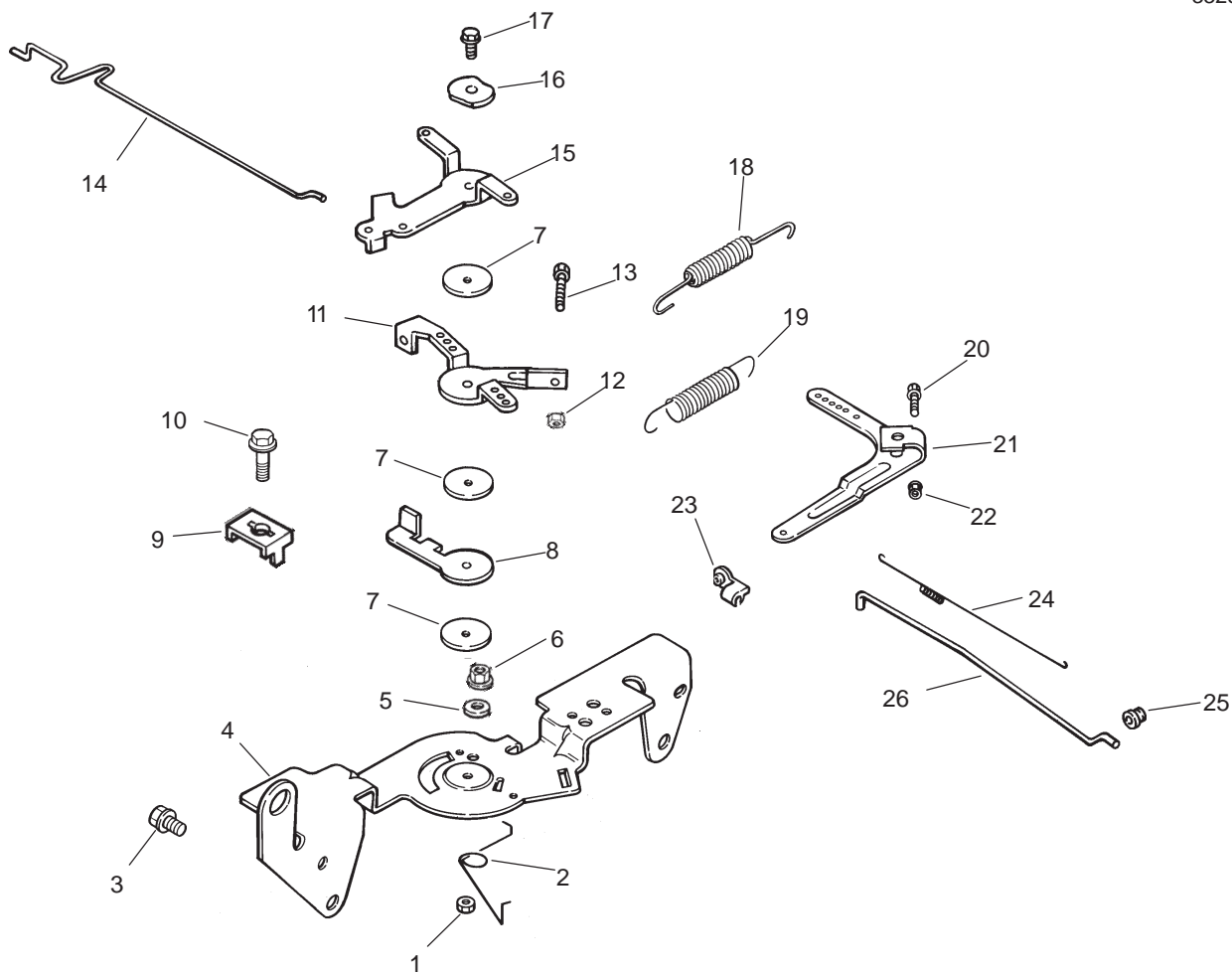


Group 8 – Fuel System Assembly Kohler CH20S PS-64675

Ref. No.	Part No.	Qty.	Description
1	25 353 32-S	2	Line, fuel 9"
2	25 237 14-S	6	Clamp, hose
3	24 853 75-S	1	Kit, carburetor
4	24 041 06-S	1	w/gasket (Includes 4-6)
5	24 053 75	1	Gasket, air cleaner base
		1	Carburetor assembly (For information only not available separately) (Service with kits 24 757 01-S, 24 757 02-S, 24 757 03-S, & 24 757 07-S)
6	24 041 17-S	1	Gasket, carburetor
7	M-651030-S	2	Screw, hex. flange M6x1.0x30
8	24 050 02-S	1	Filter, fuel
9	24 100 01-S	2	Nut, plastic
10	24 393 16-S	1	Pump, fuel – pulse
11	24 086 12-S	2	Screw, hex. cap M6x1.7x18
12	24 353 02-S	1	Line, fuel 15-1/2"

Ref. No.	Part No.	Qty.	Description
NOT ILLUSTRATED			
	24 757 01-S	1	Kit, solenoid
	24 757 02-S	1	Kit, float
	24 757 03-S	1	Kit, carburetor repair
	24 757 07-S	1	Kit, choke repair

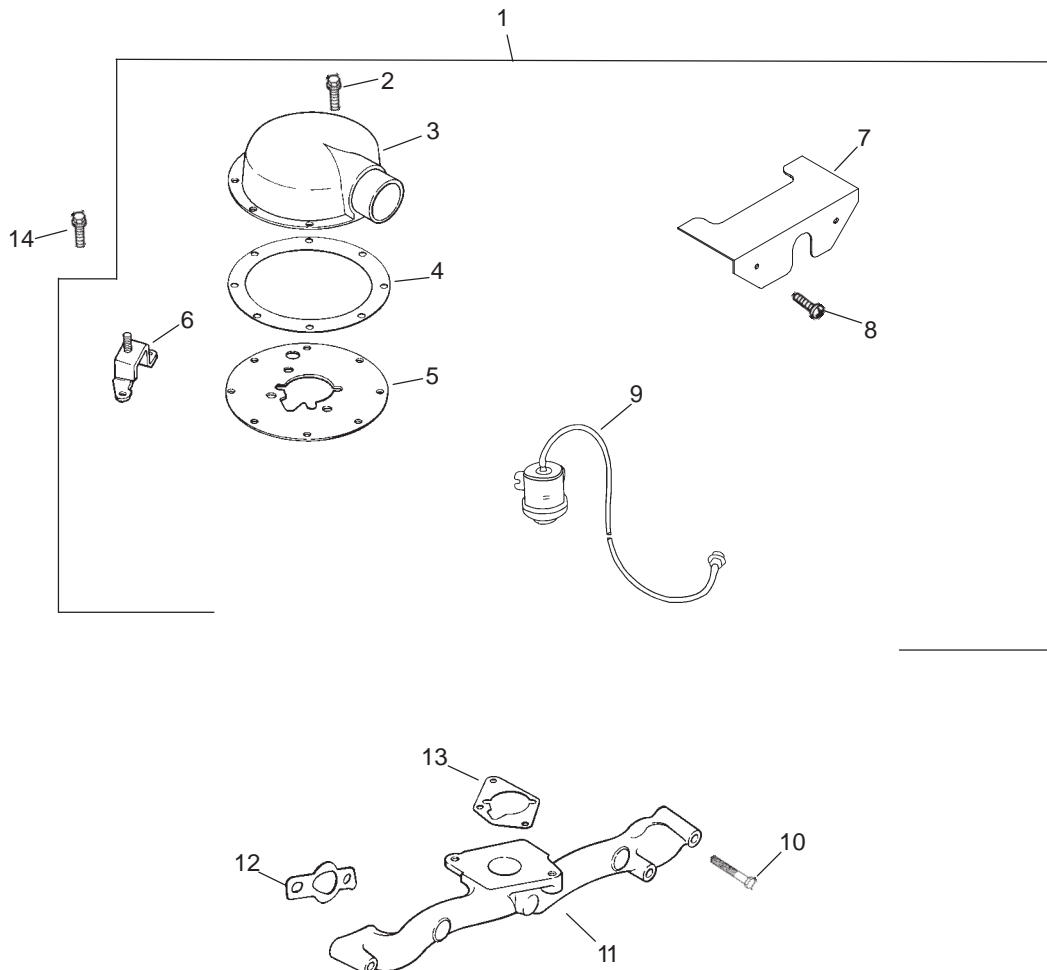
Obtain Parts From Kohler



Group 9 – Engine Control Assembly Kohler CH20S PS-64675

Ref. No.	Part No.	Qty.	Description	Ref. No.	Part No.	Qty.	Description
1	M-547050-S	1	Nut, hex. lock M5x0.8	20	24 211 03-S	1	Bolt round head square neck
2	24 089 03-S	1	Spring, choke return	21	24 090 33-S	1	Lever, governor
3	M-645016-S	4	Screw, hex. flange M6x1.0x16	22	N M-641060-S	1	Nut, hex. flange M6x1.0
4	24 126 56-S	1	Bracket, control	23	25 158 11-S	1	Bushing, linkage retaining
5	X-20-1-S	1	Washer, lock 1/4"	24	24 089 01-S	1	Spring, linkage
6	M-541050-S	1	Nut, hex. flange M5x0.8	25	25 158 08-S	1	Bushing, linkage retaining
7	24 468 01-S	3	Washer, plain 5.5 mm	26	24 079 01-S	1	Linkage, throttle
8	24 090 07-S	1	Lever, throttle actuator				
9	12 237 01-S	2	Clamp, cable				
10	M-545016-S	3	Screw, hex. flange M5x0.8x16				
11	24 090 03-S	1	Lever, throttle control				
12	M-446030-S	1	Nut, hex M4x0.7				
13	M-401030-S	1	Screw, hex. cap M4x0.7x30				
14	24 079 02-S	1	Linkage, choke				
15	24 090 05-S	1	Lever, choke				
16	41 468 03-S	1	Washer, spring 1/4"				
17	M-545020-S	1	Screw, hex. flange M5x0.8x20				
18	24 089 51-S	1	Spring, throttle limiter				
19	24 089 45-S	1	Spring, governor				

Obtain Parts From Kohler



Group 10 – Air Intake/Filtration Assembly Kohler CH20S PS-64675

Ref. No.	Part No.	Qty.	Description
1	24 743 28-S	1	Kit, heavy duty air cleaner (Includes 2-9, Decal 24 113 95-S, and Carburetor Kit 24 853 75-S)
2	M-645016-S	7	Screw, hex. flange M6x1.0x16
3	24 029 28-S	1	Adapter, air intake
4	24 041 38-S	1	Gasket, air cleaner adapter
5	24 029 35-S	1	Plate, adapter
6	24 126 21-S	1	Bracket, air cleaner base
7	24 314 25-S	1	Shield, debris
8	24 086 06-S	2	Screw, phillips hd. 11-16x3/4"
9	25 755 24-S	1	Kit, air filter gauge
10	25 086 84-S	4	Screw, hex. flange M6x1.0x55
11	24 164 14-S	1	Manifold, intake
12	24 041 01-S	2	Gasket, intake manifold
13	24 041 06-S	1	Gasket, air cleaner base

Ref. No.	Part No.	Qty.	Description
14	M-639016-S	3	Screw, hex. flange M6x1.0x16
NOT ILLUSTRATED			
	24 853 75-S	1	Kit, carburetor w/gaskets
	24 113 95-S	1	Decal, HP
	25 113 27-S	1	Decal, air cleaner

Obtain Parts From Kohler

