



Signal Light Kit
Workman[®] 1100, 2100 and
Twister[™] Utility Vehicle
Part No. 104-6953

Parts Catalog

Ordering Replacement Parts

To order replacement parts, please supply: the part number, the quantity, and the description of each part desired.

Understanding Reference Numbers

Each identified part in an illustration has a reference number. The reference number for a part also appears in the parts list, along with other information about the part.

This catalog uses two special reference number formats, one to indicate parts in a service assembly and another to indicate the quantity of a given part in an illustration.

Service Assembly Reference Numbers

Parts in service assemblies have reference numbers in the form **a:b**. The **a** represents the reference number of the entire service assembly and the **b** represents a sequential number unique to each part within the service assembly.

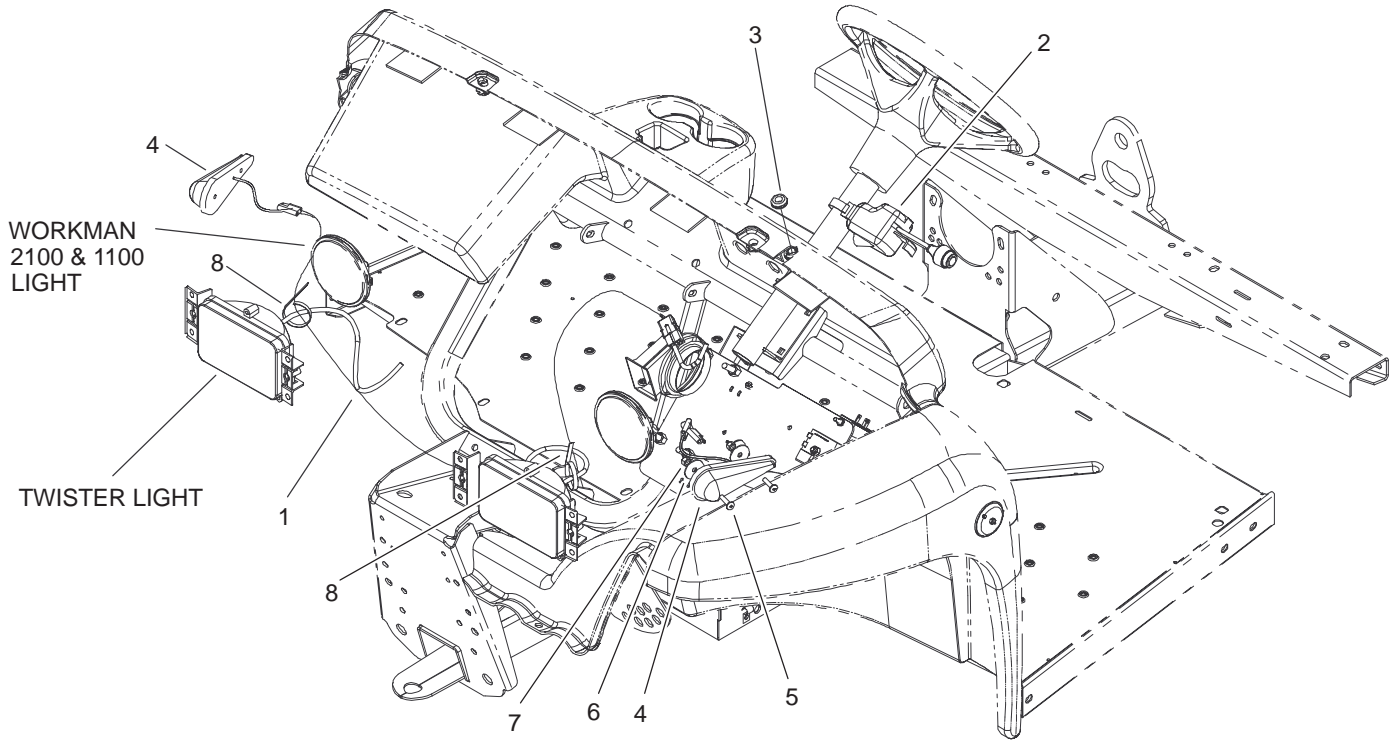
For example, a wheel assembly might be identified by reference number **6**, the tire by **6:1**, the valve by **6:2**, and the wheel by **6:3**. When you order the assembly identified by reference number **6**, you receive all parts identified by reference numbers **6:1**, **6:2**, and **6:3**. However, you may also order any part individually.

Reference numbers of this type appear in illustrations and in part lists.

Reference Numbers Indicating Quantity

In an illustration, if a reference number indicates more than one part, the reference number has the form **nX y**. The **n** represents the quantity of the part, the **X** is the multiplication symbol, and the **y** represents the reference number.

For example, in an illustration, the reference number **2X 37** means that two of the parts identified by reference number **37** are indicated.



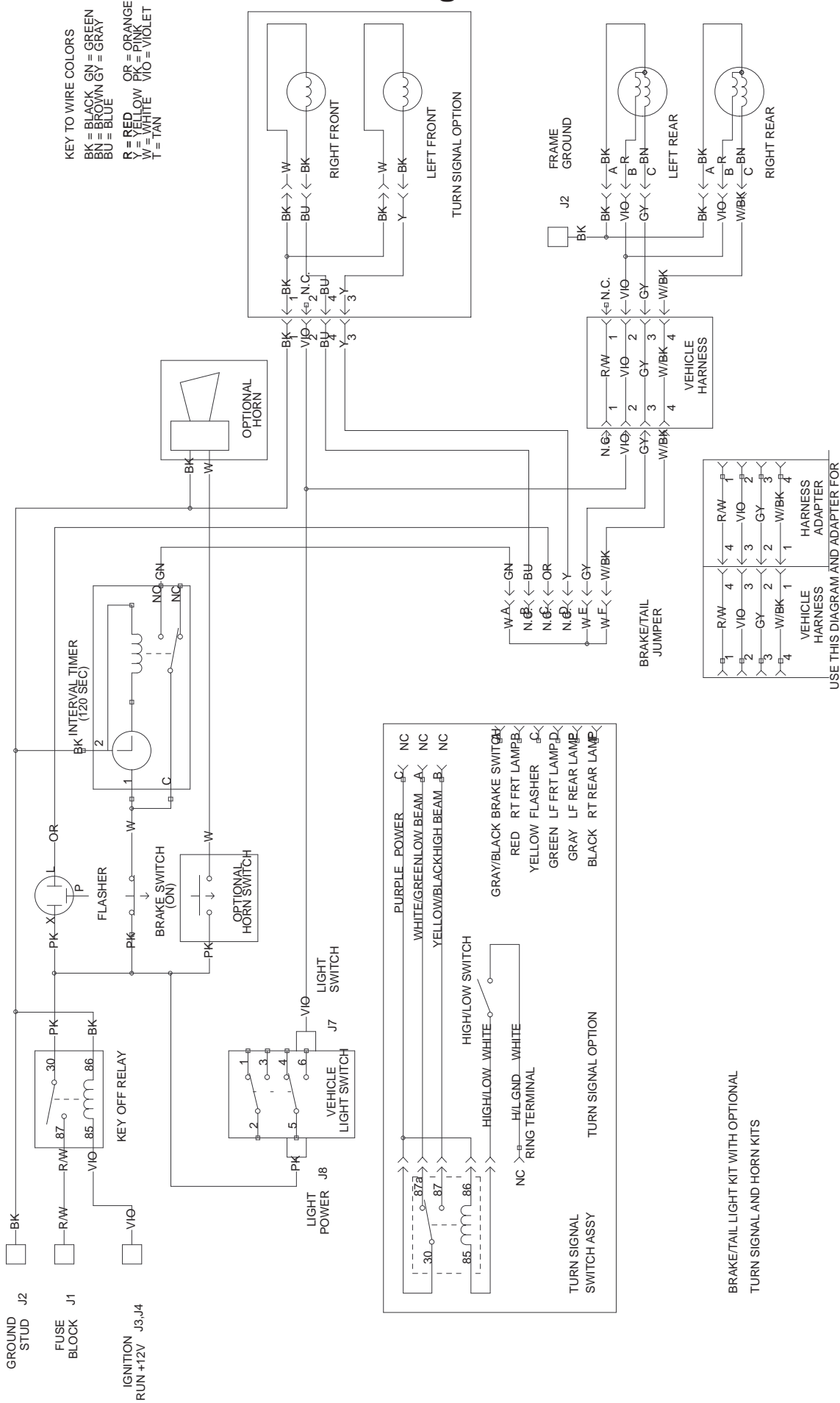
Sheet No.:0

Signal Light Kit

Ref. No.	Part No.	Qty.	Description
1	104-6667	1	Harness-Signal, Turn
2	93-3916	1	Controller-Signal
3	1-633630	1	Grommet-Brake
4	104-6975	2	Light-Signal, Front
5	104-6986	4	Screw-Machine, PPH
6	3256-58	4	Washer-Flat
7	3296-42	4	Nut-Lock, NI
8	3290-378	3	Tie-Cable

Ref. No.	Part No.	Qty.	Description

Brake / Tail Light Schematic



USE THIS DIAGRAM AND ADAPTER FOR
 MODELS 07253 AND 07253TC WITH
 SERIAL NUMBERS LESS THAN 2200000000

