



# Horn Kit

## Workman® 1100/2100 and Twister™ Utility Vehicle

Part No. 104-6663

Form No. 3326-973

### Installation Instructions

## Loose Parts

Description	Qty.	Use
Horn	1	Installing the horn
U-bolt	1	
Locknut, 3/8 in.	2	
Plate	1	
Harness	1	Installing the harness
Horn button	1	
Decal	1	Attach to the dash panel.
Certificate of compliance	1	
Installation Instructions	1	Assembling the Horn Kit

## Attaching the Horn

1. Position the machine on a level surface. Set the parking brake, stop the engine, and remove the key.



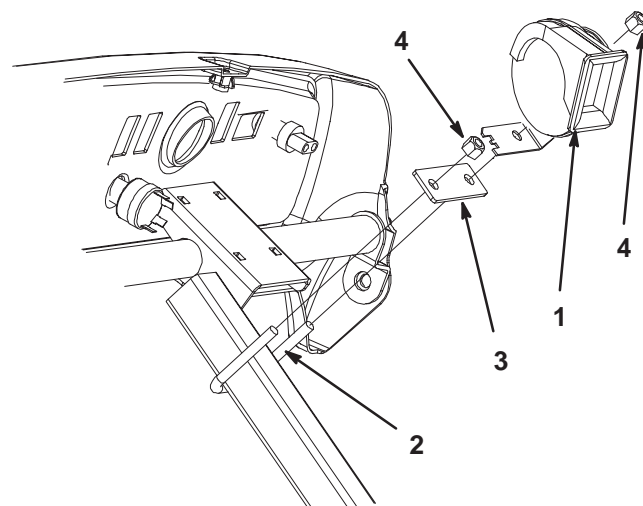
### Caution



If you leave the key in the ignition switch, someone could accidentally start the engine and seriously injure you or other bystanders.

Remove the key from the ignition switch before you do any maintenance.

2. Remove the hood from the vehicle by removing the 2 screws in the top of the hood, the 2 bolts on each fender, and the 4 bolts from the bottom of the hood.
3. Attach the horn to the frame channel with the U-bolt, plate, and locknuts (Fig. 1).

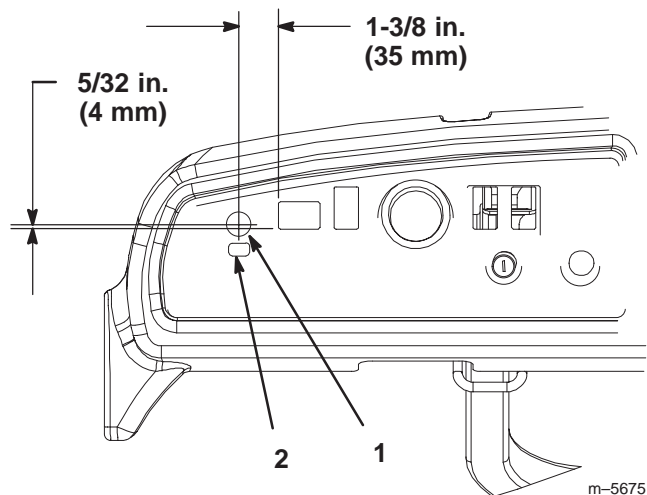


m-5674

Figure 1

- |           |            |
|-----------|------------|
| 1. Horn   | 3. Plate   |
| 2. U-bolt | 4. Locknut |

4. Locate, mark, and drill a 0.641 diameter hole in the dash panel at the location shown in Figure 2.



**Figure 2**

1. 0.641 diameter hole
2. Decal

5. Secure the horn button to the dash panel.
6. Attach the decal to the dash in the approximate location shown in Figure 2.

## Connecting the Wire Harness

1. Connect the white and long black wires on the wire harness to the horn.
2. Connect the ring terminals to the horn button.

### Workman 1100/2100 with Serial Numbers 210999999 and Lower

1. Unplug the violet and black wires from the vehicle harness to the ignition switch.
2. Connect the short violet and black wires from the horn harness to the ignition switch.
3. Connect the violet wire from the vehicle harness to the violet plug on the horn harness.
4. Connect the black wire from the vehicle harness to the black plug on the horn harness.
5. Install the hood.

### Workman 1100/2100 with Serial Numbers 2200000001 and Higher

1. Connect the short violet wire from the horn harness to the violet pigtail on the vehicle harness.
2. Connect the short black wire from the horn harness to the black pigtail on the vehicle harness.
3. Install the hood.

### Twister with Serial Numbers 2109999999 and Lower

1. Unplug the red or yellow wire from the vehicle harness to the ignition switch.
2. Unplug the black wire from the vehicle harness to the ignition switch.
3. Connect the short violet and black wires from the horn harness to the ignition switch.
4. Connect the red or yellow wire from the vehicle harness to the violet plug on the horn harness.
5. Connect the black wire from the vehicle harness to the black plug on the horn harness.
6. Install the hood.

### Twister with Serial Numbers 220000001 and Higher

1. Connect the short violet wire from the horn harness to the yellow pigtail on the vehicle harness.
2. Connect the short black wire from the horn harness to the black pigtail on the vehicle harness.
3. Install the hood.