



Rear Roller Scraper Kit

Groundsmaster® 3500-D

Part No. 104-4869

Installation Instructions

1. Position the machine on a level surface, lower cutting decks, stop engine, engage the parking brake and remove key from ignition switch.
2. Remove and retain mounting screws securing roller mounts to rear of deck frame (Fig. 1). Remove and discard roller, scraper, roller mounts and all remaining mounting components.

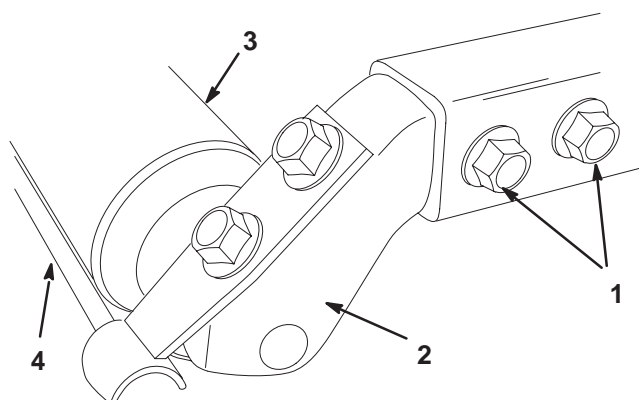


Figure 1

- | | |
|--------------------|----------------|
| 1. Mounting screws | 3. Rear roller |
| 2. Roller mount | 4. Scraper |

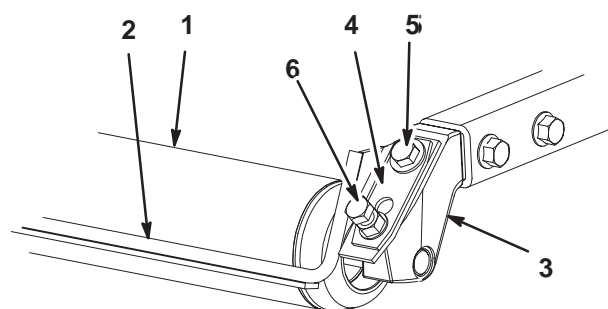


Figure 2

- | | |
|-----------------|------------------|
| 1. Rear roller | 4. Scraper plate |
| 2. Scraper | 5. Upper screw |
| 3. Roller mount | 6. Lower screw |

3. Insert a roller mount onto each end of roller shaft.
4. Thread a nut onto each long capscrew supplied in kit.
5. Loosely mount each end of scraper and a scraper plate to each roller mount with a short capscrew and a long capscrew/nut as shown in figure 2.
6. Rotate roller until flat on roller shaft is aligned with end of long capscrew. Tighten long capscrew.

7. Insert roller mounts into rear of deck frame and loosely secure with 2 mounting screws previously removed.
8. Slide the scraper up or down until a gap of .02-.04 in. is achieved between the rod and the roller. Tighten short capscrew and jam nut to lock adjustment. Torque to 30 ft.-lb. (41 N·m).
9. Secure the remaining mounting screws to 30 ft.-lb. (41 N·m) in an alternating sequence.