



5, 8 and 11 Blade 27in Reel Mower Reelmaster[®] 2300-D and 3100-D

Model No. 03210—220000001 and Up

Model No. 03211—220000001 and Up

Model No. 03214—220000001 and Up

Parts Catalog

Ordering Replacement Parts

To order replacement parts, please supply: the part number, the quantity, and the description of each part desired.

Understanding Reference Numbers

Each identified part in an illustration has a reference number. The reference number for a part also appears in the parts list, along with other information about the part.

This catalog uses two special reference number formats, one to indicate parts in a service assembly and another to indicate the quantity of a given part in an illustration.

Service Assembly Reference Numbers

Parts in service assemblies have reference numbers in the form **a:b**. The **a** represents the reference number of the entire service assembly and the **b** represents a sequential number unique to each part within the service assembly.

For example, a wheel assembly might be identified by reference number **6**, the tire by **6:1**, the valve by **6:2**, and the wheel by **6:3**. When you order the assembly identified by reference number **6**, you receive all parts identified by reference numbers **6:1**, **6:2**, and **6:3**. However, you may also order any part individually.

Reference numbers of this type appear in illustrations and in part lists.

Reference Numbers Indicating Quantity

In an illustration, if a reference number indicates more than one part, the reference number has the form **nX y**. The **n** represents the quantity of the part, the **X** is the multiplication symbol, and the **y** represents the reference number.

For example, in an illustration, the reference number **2X 37** means that two of the parts identified by reference number **37** are indicated.

Contents

Description	Page
Reel Assembly	3
Bedbar Assembly	4
Roller Assembly	5

Description	Page
Gauge Bar, Angle Indicator and Handle Assemblies	6

Accessories

Description	Model / Part No.
Lift Arm Kit (RM2300-D)	03471
Lift Arm Kit (RM3100-D)	03220
Basket Kit	03223
High HOC Extension Kit	104-1395
Wiehle Roller Kit	03450
3in Diameter Wiehle Roller Kit	03233
Full Roller Kit	03440
Sectional Roller Kit	03445

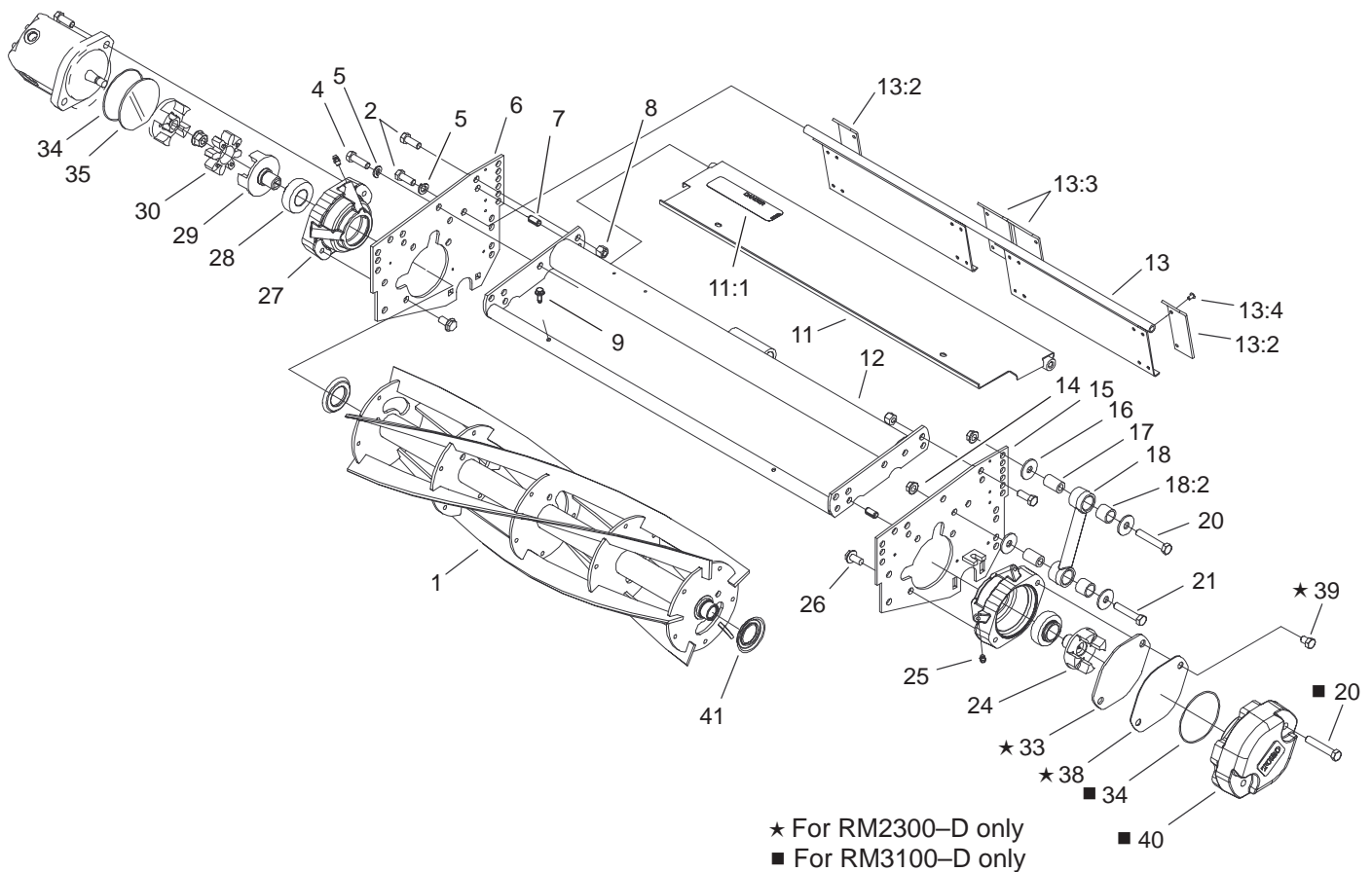
Description	Model / Part No.
Anti-Scalp Roller Kit	03447
Wiehle Roller Scraper Kit	94-5082
3in Diameter Wiehle Roller Scraper Kit ...	104-1398
Full Roller Scraper Kit	60-9560
Fixed Cutting Unit Kit	93-6915
Comb Kit	67-9400
Skid Kit	94-3664

Part Description Abbreviations

Part descriptions in this catalog may include the following abbreviations.

Abbreviation	Meaning
AR	as required
ASM	assembly
CARR	carriage
DEG	degrees
FH	flat head
GA	gauge
HF	hex flange
HH	hex head
HHF	hex head flange
HLH	hex lag head
HJ	hex jam
HOC	height-of-cut
HS	hex socket
HSBH	hex socket button head
HSFH	hex socket flat head
HSH	hex socket head
HWH	hex washer head
HWHTF	hex washer head thread forming

Abbreviation	Meaning
HYD	hydraulic
INC	incorporated
LH	left hand
NI	nylon insert
PPH	Phillips pan head
PTH	Phillips truss head
PTO	power take off
RH	right hand
SFH	slotted fillister head
SHH	slotted hex head
SQH	square head
SHWH	slotted hex washer head
SPH	slotted pan head
SRH	slotted round head
STD	standard
TAP	self tapping
TTH	Torx truss head
WH	wing head

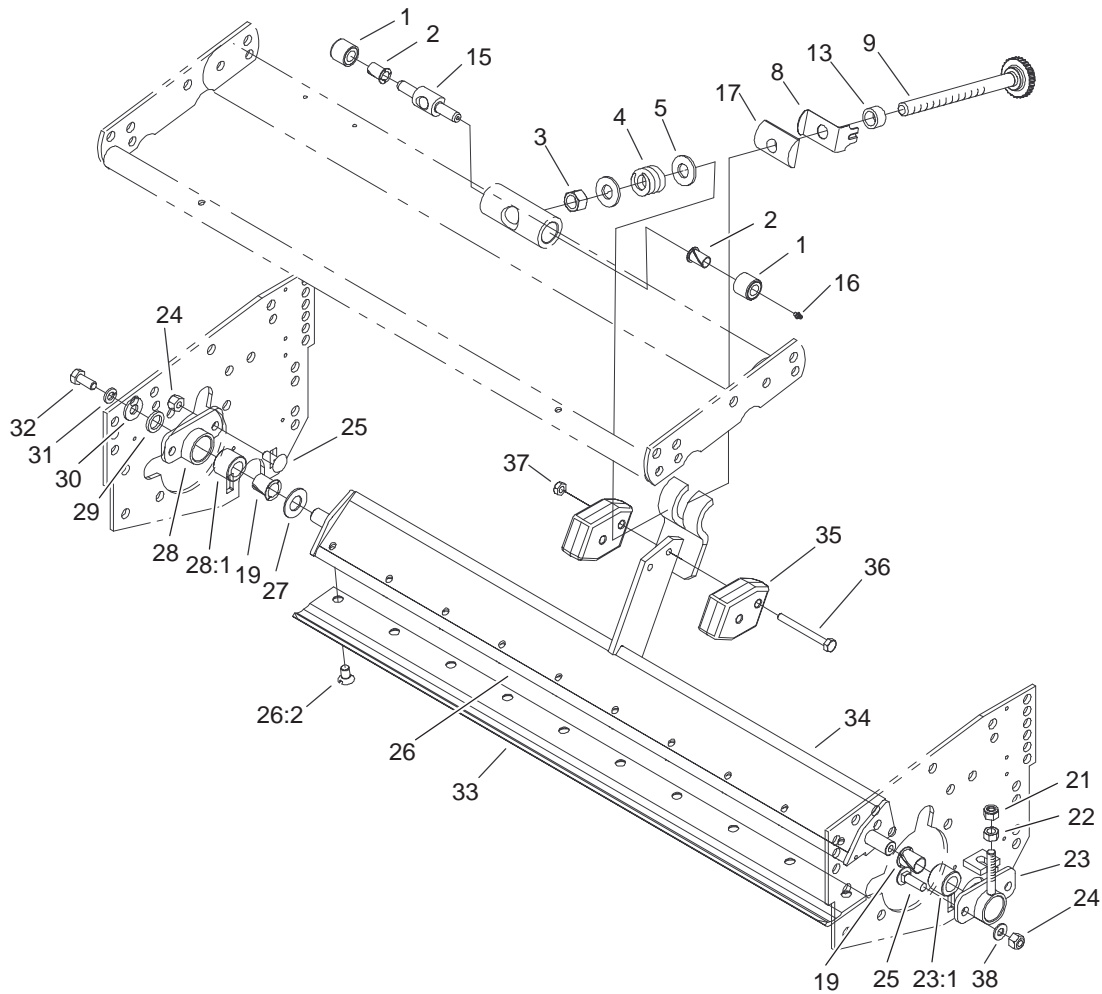


Sheet No.:2

Reel Assembly

Ref. No.	Part No.	Qty.	Description	Ref. No.	Part No.	Qty.	Description
1	99-3482	1	Reel-Blade, 5 (only on: 03210)	16	93-8806	16	Washer-Hardened
*1	105-6768	1	Reel-Blade, 11 (only on: 03214)	17	93-6981	8	Spacer
*1	99-3483	1	Reel-Blade, 8 (only on: 03211)	18	16-9759	4	Link And Bushing ASM
2	323-6	10	Screw-HH	18:2	94-8945	2	Bushing
4	323-7	2	Screw-HH	20	323-11	6	Screw-HH
5	3253-5	4	Washer-Lock	21	323-10	4	Screw-HH
6	94-3695-01	1	Plate-Side Reel, RH	24	93-8826	1	Coupler-Reel, LH Thread
7	32121-36	4	Pin-Spring	25	302-5	4	Fitting-Grease
8	3296-39	6	Nut-Lock, NI	26	3234-1	4	Screw-HHF
9	32144-10	2	Screw-HWH	27	99-3404	2	Housing-Bearing
11	94-3621	1	Front Grass Shield ASM	28	100-4926	2	Bearing-Aligning, Self
11:1	67-7960	1	Decal-Danger	29	93-8825	1	Coupler-Reel, RH Thread
11:1	93-6688	1	Decal-Danger, Europe	30	93-8827	1	Spider-Coupler
11:1	94-4584	1	Decal-Danger, Japan	33	94-5979	1	Gasket
12	95-8753-01	1	Reel Frame ASM	34	353-949	2	O-Ring
13	93-8849	1	Rear Grass Shield ASM	35	94-2703	1	Plug (For Shipping)
13:2	61-3280	2	Flap-Rubber	38	93-6960	1	Cover-Holder, Bearing
13:3	61-3290	2	Flap-Rubber, Middle	39	323-2	2	Screw-HH
13:4	700382	12	Rivet	40	105-0171-03	1	Weight-End
14	32128-36	8	Nut-HF	41	105-6761	2	Seal-Guard (only on: 03211, 03214)
15	94-3697-01	1	LH Side Plate ASM				

* Not illustrated



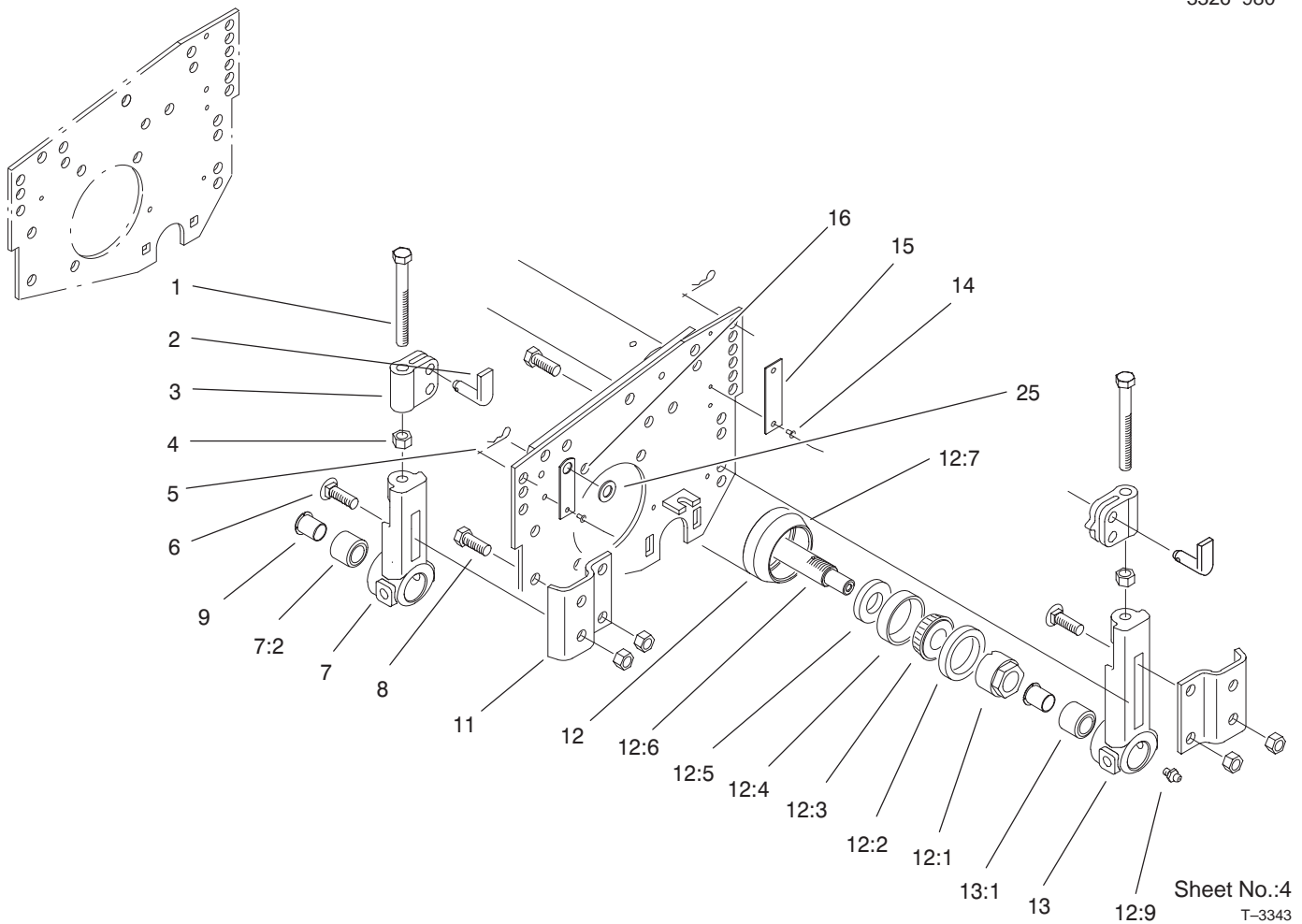
Sheet No.:3

Bedbar Assembly

Ref. No.	Part No.	Qty.	Description
1	62-5510	2	Bushing-Rubber
2	52-2890	2	Bushing-Nylon
3	3296-62	1	Nut-Lock NI
4	57-5270	1	Spring-Comp
5	29-8910	2	Washer
8	95-8752	1	Spring
9	95-8877	1	Bedbar Adjuster ASM
13	93-2959	1	Spacer-Adjuster
15	57-5260	1	Pivot-Bedbar
16	302-18	1	Fitting-Grease
17	93-2892	1	Pivot-Bedbar, Main Adj
19	56-9520	2	Bushing-Flanged
21	3296-4	1	Nut-Lock, NI
22	3219-2	1	Nut-Hex
23	16-9769	1	Bedbar Adj. Housing & Bushing ASM
23:1	56-9510	1	Bushing ASM
24	3296-29	4	Nut-Lock, NI
25	3230-2	4	Screw-CARR
☆26		1	Bedbar ASM
26:2	57-4910	10	Screw
27	61-1950	1	Washer-Bedbar
28	14-4459	1	Housing-Bedbar
28:1	56-9510	1	Bushing ASM
29	62-7120	1	Washer

Ref. No.	Part No.	Qty.	Description
30	3256-56	1	Washer-Flat
31	3253-4	1	Washer-Lock
32	322-3	1	Screw-HH
33	62-5180	1	Bedknife (only on: 03210, 03211)
33	104-1380	1	Bedknife-Duty, Heavy
33	105-6785	1	Bedknife (only on: 03214)
34	95-8739-01	1	Machining-Bedbar
35	99-3472	2	Weight-Lead (only on: 03214)
36	321-15	2	Screw-HH (only on: 03214)
37	32146-17	2	Nut-Lock (only on: 03214)
38	3256-74	4	Washer-Flat

☆ Not serviced separately

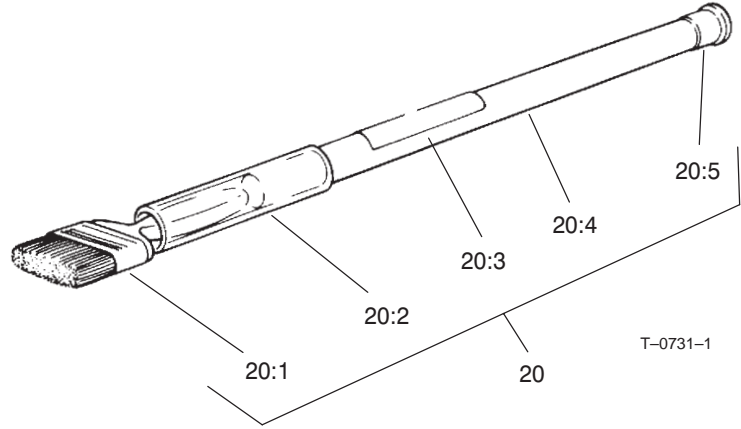
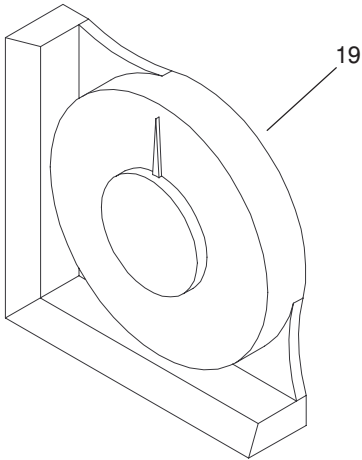
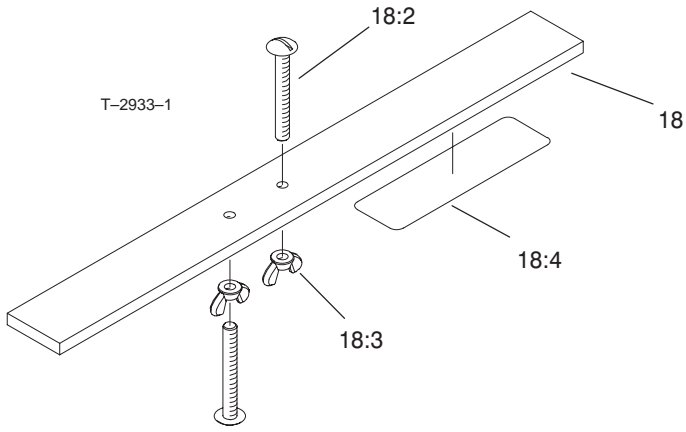


Sheet No.:4
T-3343

Roller Assembly

Ref. No.	Part No.	Qty.	Description
1	323-57	4	Screw-HH
2	71-3690	4	Spade-Bent
3	61-0420-01	4	Support-HOC
4	3296-39	16	Nut-Lock, NI
5	3290-467	4	Pin-Hair
6	3231-25	4	Screw-CARR
7	14-4489	2	Front HOC Bracket ASM
7:2	56-9510	1	Bushing ASM
8	323-6	8	Screw-HH
9	56-9520	2	Bushing-Flanged
11	61-0910	4	Bracket-Angle
12	61-0410	1	Full Roller ASM
12:1	71-3590	2	Nut-Adjustment
12:2	105-0150	2	Seal-Grease
12:3	254-78	2	Bearing-Cone
12:4	254-79	2	Bearing-Roller, Cup
12:5	253-152	2	Seal-Oil
12:6	105-0156	1	Shaft-Roller
12:7	12-4989-01	1	End Cap & Tube ASM
12:9	302-5	2	Fitting-Grease
13	14-4479	2	Rear HOC Bracket And Bushing ASM
13:1	56-9510	1	Bushing ASM
14	3290-55	8	Rivet-Pop
15	61-3800	2	Plate-Rear

Ref. No.	Part No.	Qty.	Description
16	61-3790	2	Plate-HOC, Front
25	3256-38	2	Washer-Flat



Sheet No.:1

Gauge Bar, Angle Indicator and Handle Assemblies

Ref. No.	Part No.	Qty.	Description
18	98-1852	1	Gauge Bar ASM
18:2	32122-54	2	Screw-Head, Truss
18:3	32103-3	2	Nut-Wing
18:4	98-7976	1	Decal-Bar, Gauge
19	99-3503	1	Indicator-Angle (only on: 03210, 03214)
20	29-9100	1	Handle ASM
20:1	36-4310	1	Brush
20:2	29-9090	1	Hose-Handle
20:3	12-9140	1	Decal-Body, Front
20:4	29-9080	1	Handle
20:5	2410-18	1	Cap-Plastic

Ref. No.	Part No.	Qty.	Description

