



5 and 8 Blade 32in Reel Mower

Reelmaster[®] 2600-D and 3100-D

Model No. 03212—220000001 and Up

Model No. 03213—220000001 and Up

Parts Catalog

Ordering Replacement Parts

To order replacement parts, please supply: the part number, the quantity, and the description of each part desired.

Understanding Reference Numbers

Each identified part in an illustration has a reference number. The reference number for a part also appears in the parts list, along with other information about the part.

This catalog uses two special reference number formats, one to indicate parts in a service assembly and another to indicate the quantity of a given part in an illustration.

Service Assembly Reference Numbers

Parts in service assemblies have reference numbers in the form **a:b**. The **a** represents the reference number of the entire service assembly and the **b** represents a sequential number unique to each part within the service assembly.

For example, a wheel assembly might be identified by reference number **6**, the tire by **6:1**, the valve by **6:2**, and the wheel by **6:3**. When you order the assembly identified by reference number **6**, you receive all parts identified by reference numbers **6:1**, **6:2**, and **6:3**. However, you may also order any part individually.

Reference numbers of this type appear in illustrations and in part lists.

Reference Numbers Indicating Quantity

In an illustration, if a reference number indicates more than one part, the reference number has the form **nX y**. The **n** represents the quantity of the part, the **X** is the multiplication symbol, and the **y** represents the reference number.

For example, in an illustration, the reference number **2X 37** means that two of the parts identified by reference number **37** are indicated.

Contents

Description	Page	Description	Page
Reel Assembly	3	Gauge Bar, Angle Indicator and Handle Assemblies	6
Bedbar Assembly	4		
Roller Assembly	5		

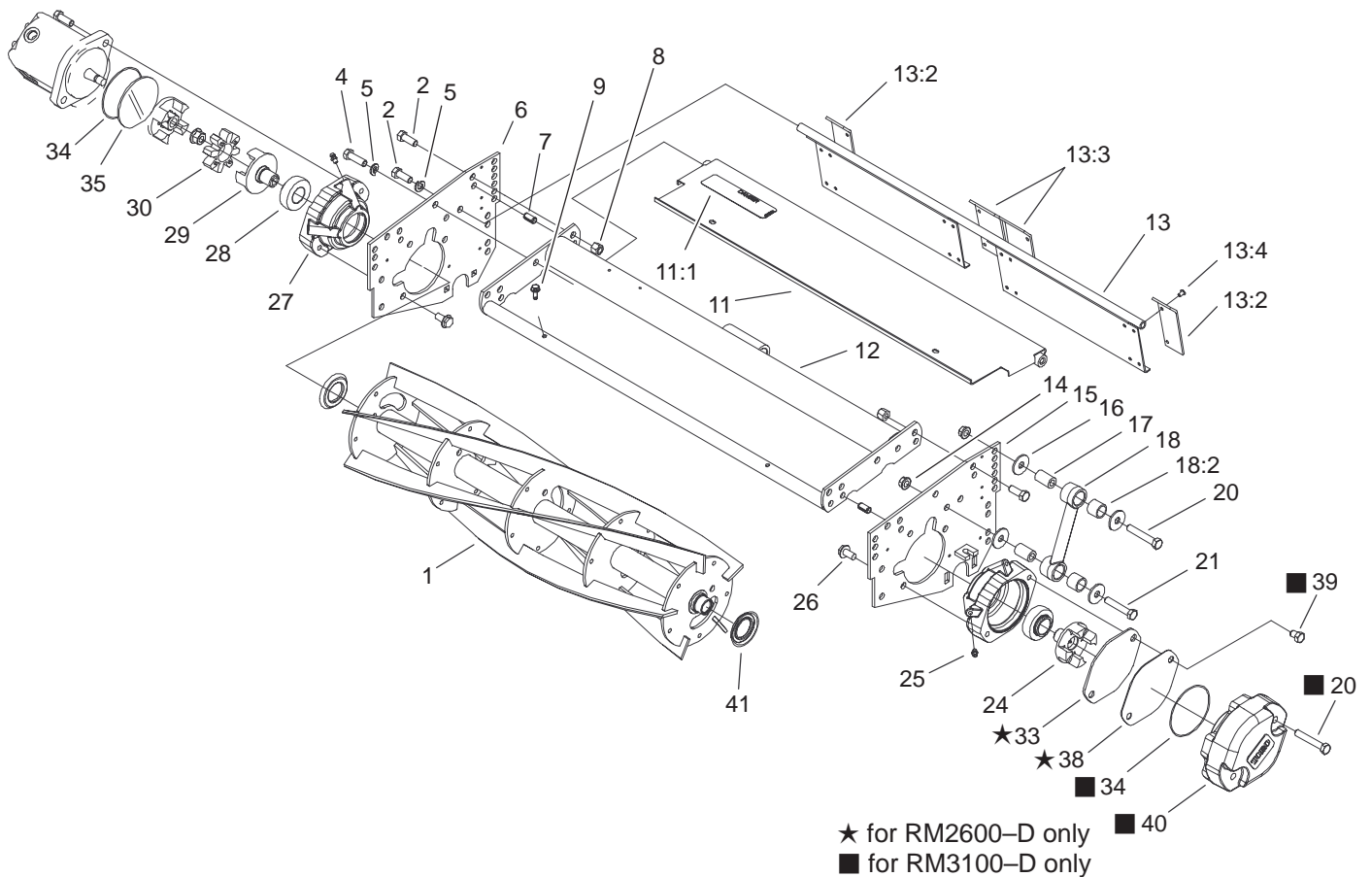
Accessories

Description	Model / Part No.	Description	Model / Part No.
Lift Arm Kit (RM2600)	03472	Anti-Scalp Roller Kit	03477
Lift Arm Kit (RM3100)	03221	3in Dia. Wiehle Scraper Kit	104-1399
High HOC Extension Kit	104-1395	Wiehle Scraper Kit	94-5081
Wiehle Roller Kit (3in Dia.)	03234	Full Roller Scraper Kit	94-5080
Wiehle Roller Kit	03475	Fixed Cutting Unit Kit	93-6915
Full Roller Kit	03479	Skid Kit	94-3664
Sectional Roller Kit	03476		

Part Description Abbreviations

Part descriptions in this catalog may include the following abbreviations.

Abbreviation	Meaning	Abbreviation	Meaning
AR	as required	HYD	hydraulic
ASM	assembly	INC	incorporated
CARR	carriage	LH	left hand
DEG	degrees	NI	nylon insert
FH	flat head	PPH	Phillips pan head
GA	gauge	PTH	Phillips truss head
HF	hex flange	PTO	power take off
HH	hex head	RH	right hand
HHF	hex head flange	SFH	slotted fillister head
HLH	hex lag head	SHH	slotted hex head
HJ	hex jam	SQH	square head
HOC	height-of-cut	SHWH	slotted hex washer head
HS	hex socket	SPH	slotted pan head
HSBH	hex socket button head	SRH	slotted round head
HSFH	hex socket flat head	STD	standard
HSH	hex socket head	TAP	self tapping
HWH	hex washer head	TTH	Torx truss head
HWHTF	hex washer head thread forming	WH	wing head

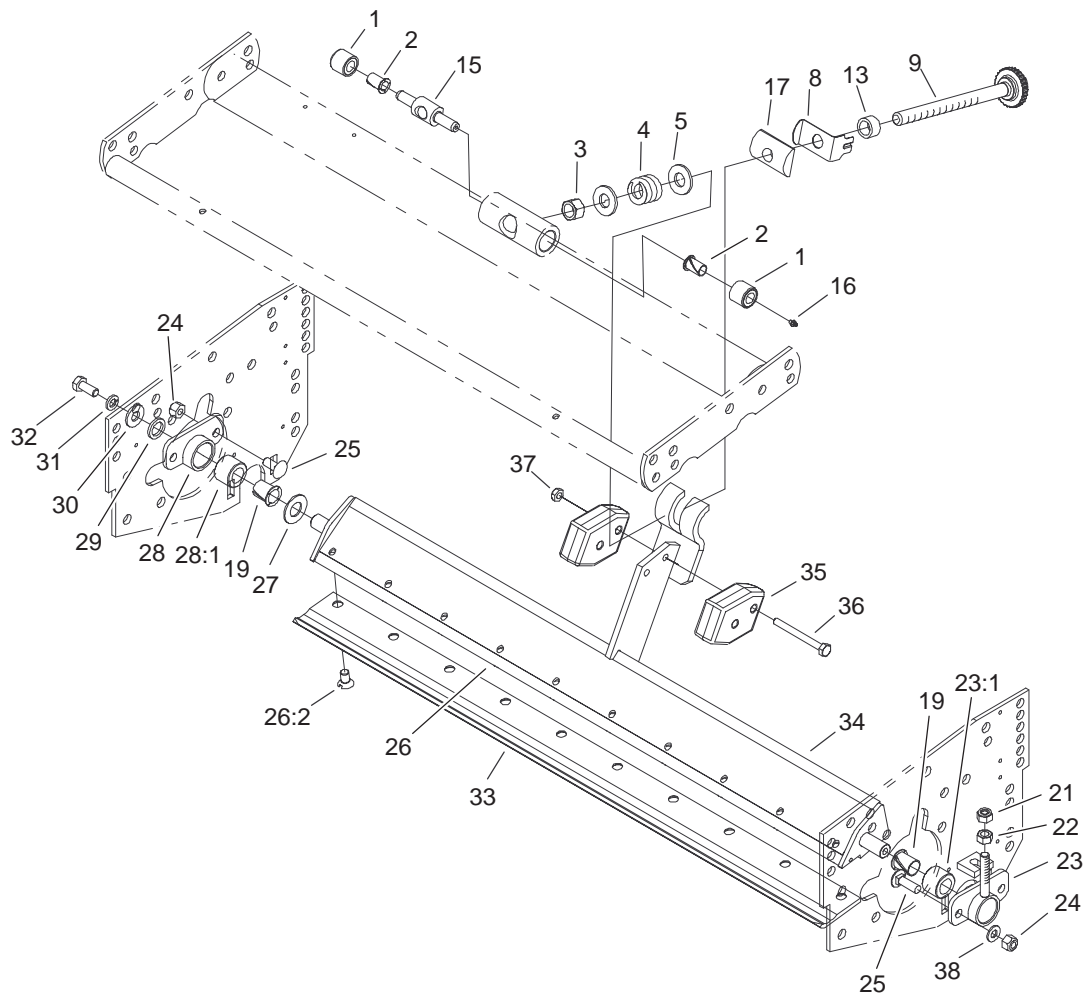


Sheet No.:2

Reel Assembly

Ref. No.	Part No.	Qty.	Description	Ref. No.	Part No.	Qty.	Description
*1	99-3485	1	Reel-8 Blade (only on: 03213)	18	16-9759	4	Link And Bushing ASM
1	99-3484	1	Reel-5 Blade (only on: 03212)	18:2	94-8945	2	Bushing
2	323-6	10	Screw-HH	20	323-11	6	Screw-HH
4	323-7	2	Screw-HH	21	323-10	4	Screw-HH
5	3253-5	4	Washer-Lock	24	93-8826	1	Coupler-Reel, LH Thread
6	94-3695-01	1	Plate-Side Reel, RH	25	302-5	4	Fitting-Grease
7	32121-36	4	Pin-Spring	26	3234-1	4	Screw-HHF
8	3296-39	6	Nut-Lock, NI	27	99-3404	2	Housing-Bearing
9	32144-10	2	Screw-HWH	28	100-4926	2	Bearing-Aligning, Self
11	94-5053	1	Front Grass Shield ASM	29	93-8825	1	Coupler-Reel, RH Thread
11:1	94-4584	1	Decal-Danger, Japan	30	93-8827	1	Spider-Coupler
11:1	93-6688	1	Decal-Danger, Europe	33	94-5979	1	Gasket
11:1	67-7960	1	Decal-Danger	34	353-949	2	O-Ring
12	95-8755-01	1	Frame-Reel	35	94-2703	1	Plug
13	94-4969	1	Rear Grass Shield ASM	38	93-6960	1	Cover-Holder, Bearing
13:2	61-3280	2	Flap-Rubber	39	323-2	2	Screw-HH
13:3	61-3290	2	Flap-Rubber, Middle	40	105-0171-03	1	Weight-End
13:4	700382	12	Rivet	41	105-6761	2	Seal-Guard (only on: 03213)
14	32128-36	8	Nut-HF				
15	94-3697-01	1	LH Side Plate ASM				
16	93-8806	16	Washer-Hardened				
17	93-6981	8	Spacer				

* Not illustrated



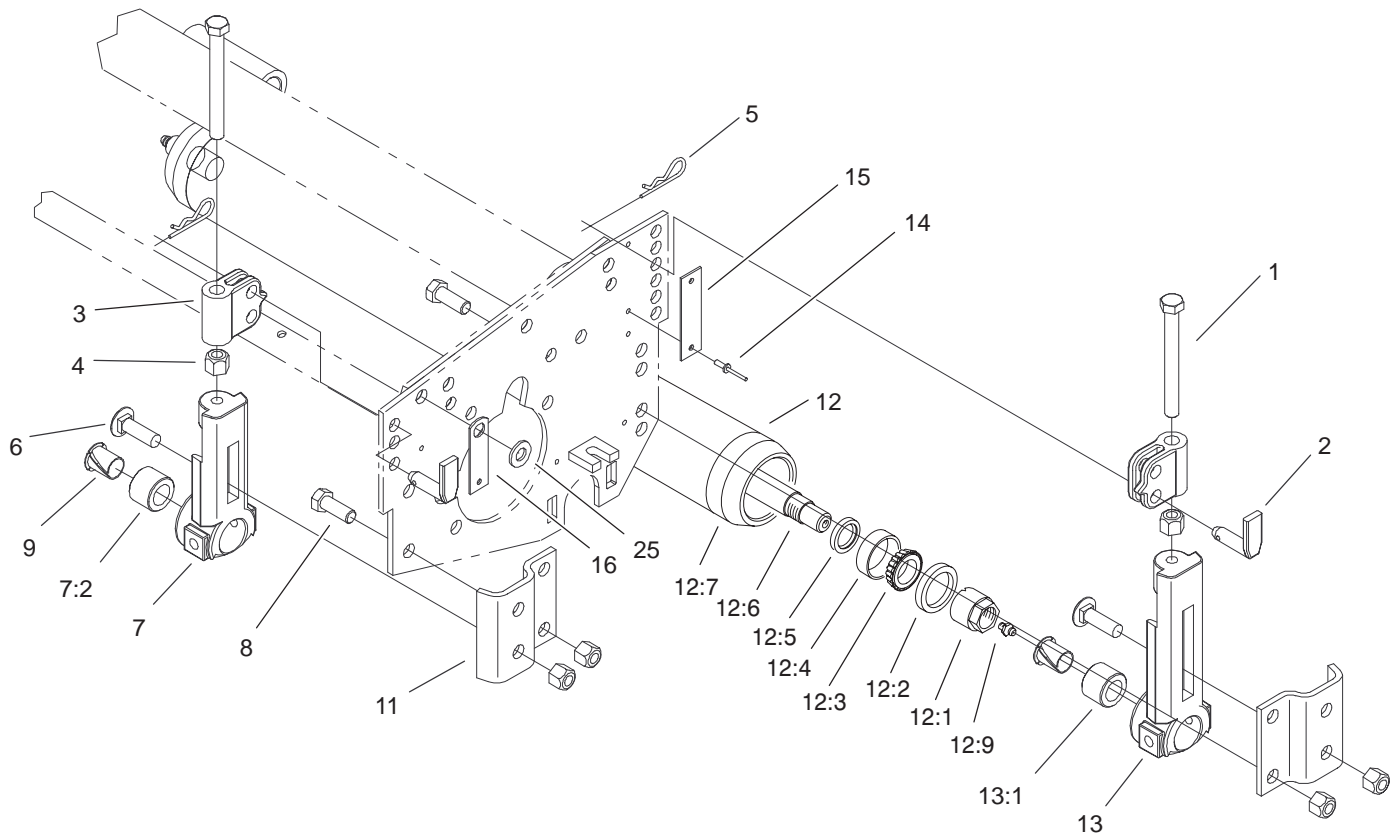
Sheet No.:3

Bedbar Assembly

Ref. No.	Part No.	Qty.	Description
1	62-5510	2	Bushing-Rubber
2	52-2890	2	Bushing-Nylon
3	3296-62	1	Nut-Lock NI
4	57-5270	1	Spring-Comp
5	29-8910	2	Washer
8	95-8752	1	Spring
9	95-8877	1	Bedbar Adjuster ASM
13	93-2959	1	Spacer-Adjuster
15	57-5260	1	Pivot-Bedbar
16	302-18	1	Fitting-Grease
17	93-2892	1	Pivot-Bedbar, Main Adj
19	56-9520	2	Bushing-Flanged
21	3296-4	1	Nut-Lock, NI
22	3219-2	1	Nut-Hex
23	16-9769	1	Bedbar Adj. Housing & Bushing ASM
23:1	56-9510	1	Bushing ASM
24	3296-29	4	Nut-Lock, NI
25	3230-2	4	Screw-CARR
☆26		1	Bedbar ASM
26:2	57-4910	12	Screw
27	61-1950	1	Washer-Bedbar
28	14-4459	1	Housing-Bedbar
28:1	56-9510	1	Bushing ASM
29	62-7120	1	Washer

Ref. No.	Part No.	Qty.	Description
30	3256-56	1	Washer-Flat
31	3253-4	1	Washer-Lock
32	322-3	1	Screw-HH
33	94-5079	1	Bedknife
33	104-1381	1	Bedknife-Duty, Heavy
34	95-8748-01	1	Bedbar Machining
35	99-3472	2	Weight-Lead (only on: 03213)
36	321-15	2	Screw-HH (only on: 03213)
37	32146-17	2	Nut-Lock (only on: 03213)
38	3256-74	4	Washer-Flat

☆ Not serviced



Sheet No.:4

Roller Assembly

Ref. No.	Part No.	Qty.	Description
1	323-57	4	Screw-HH
2	71-3690	4	Spade-Bent
3	61-0420-01	4	Support-HOC
4	3296-39	16	Nut-Lock, NI
5	3290-467	4	Pin-Hair
6	3231-25	4	Screw-CARR
7	14-4489	2	Front HOC Bracket ASM
7:2	56-9510	1	Bushing ASM
8	323-6	8	Screw-HH
9	56-9520	2	Bushing-Flanged
11	61-0910	4	Bracket-Angle
12	94-4982	1	Full Roller ASM
12:1	71-3590	2	Nut-Adjustment
12:2	105-0150	2	Seal-Grease
12:3	254-78	2	Bearing-Cone
12:4	254-79	2	Bearing-Roller, Cup
12:5	253-152	2	Seal-Oil
12:6	105-0158	1	Shaft-Roller
12:7	61-0380	2	Cap-End, Roller
12:9	302-5	2	Fitting-Grease
13	14-4479	2	Rear HOC Bracket And Bushing ASM
13:1	56-9510	1	Bushing ASM
14	3290-55	8	Rivet-Pop
15	61-3800	2	Plate-Rear

Ref. No.	Part No.	Qty.	Description
16	61-3790	2	Plate-HOC, Front
25	3256-38	2	Washer-Flat

