



Form No. 3453-925 Rev A

**Count on it.**

# Parts Catalog

## Blower and Drive Kit 48in E-Z Vac™ for Z Master® Mower

Model No. 78551—Serial No. 407000000 and Up



# Ordering Replacement Parts

To order replacement parts, please supply the part number, the quantity, and the description of each part desired.

## Understanding Reference Numbers

Each identified part in an illustration has a reference number. The reference number for a part also appears in the parts list, along with other information about the part.

This catalog uses two special reference number formats, one to indicate parts in a service assembly and another to indicate the quantity of a given part in an illustration.

## Service Assembly Reference Numbers

Parts in service assemblies have reference numbers in the form a:b. The a represents the reference number of the entire service assembly and the b represents a sequential number unique to each part within the service assembly.

For example, a wheel assembly might be identified by reference number 6, the tire by 6:1, the valve by 6:2, and the wheel by 6:3. When you order the assembly identified by reference number 6, you receive all parts identified by reference numbers 6:1, 6:2, and 6:3. However, you may also order any part individually. Reference numbers of this type appear in illustration and in parts lists.

## Reference Numbers Indicating Quantity

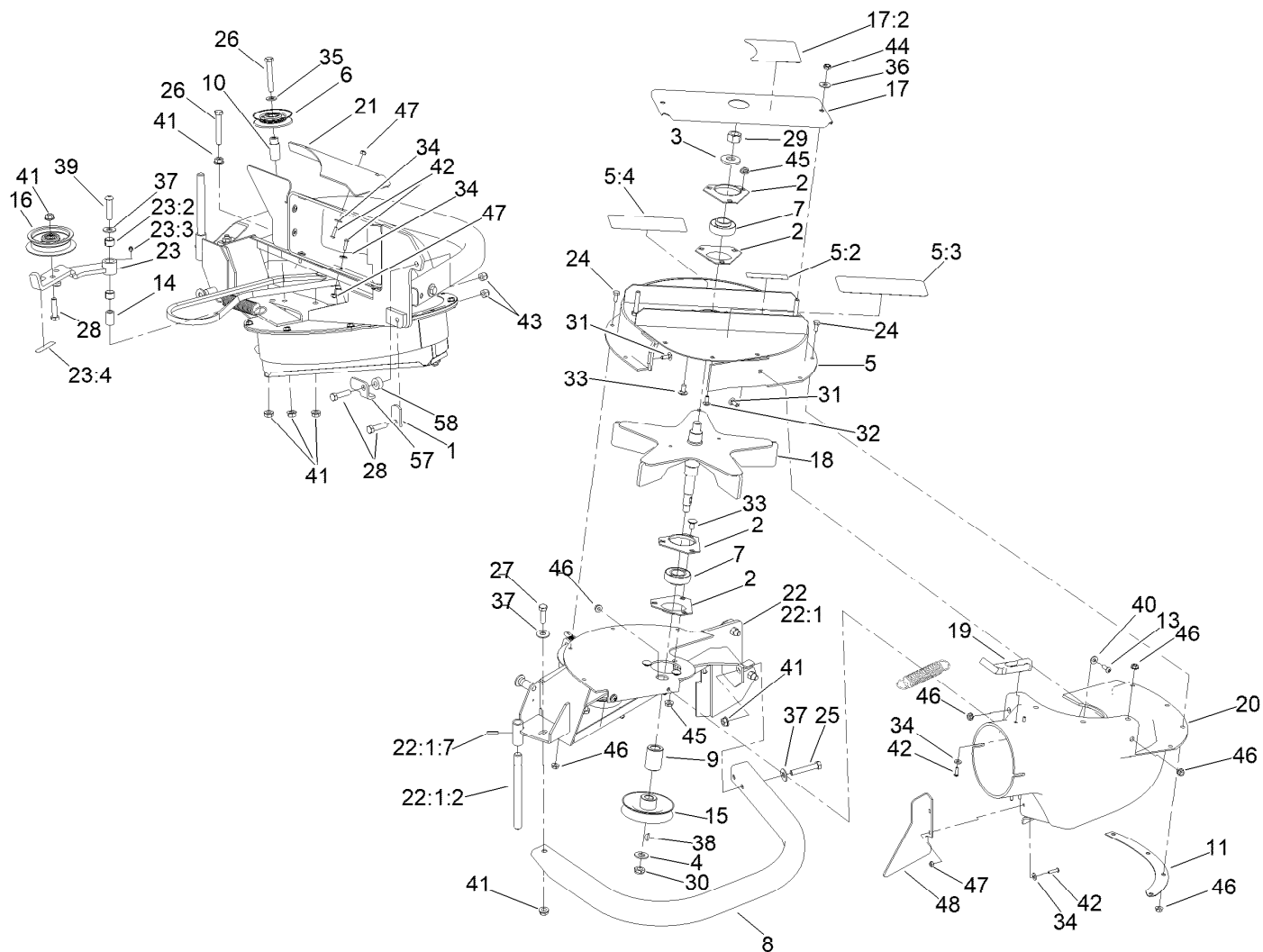
In an illustration, if a reference number indicates more than one part, the reference number has the form nX y. The n represents the quantity of the part, the X is the multiplication symbol, and the y represents the reference number.

For example, in an illustration, the reference number 2X 37 means that two of the parts identified by reference number 37 are indicated.

# Contents

Blower Assembly ..... 4

Belt, Cover and Pulley Assembly..... 6

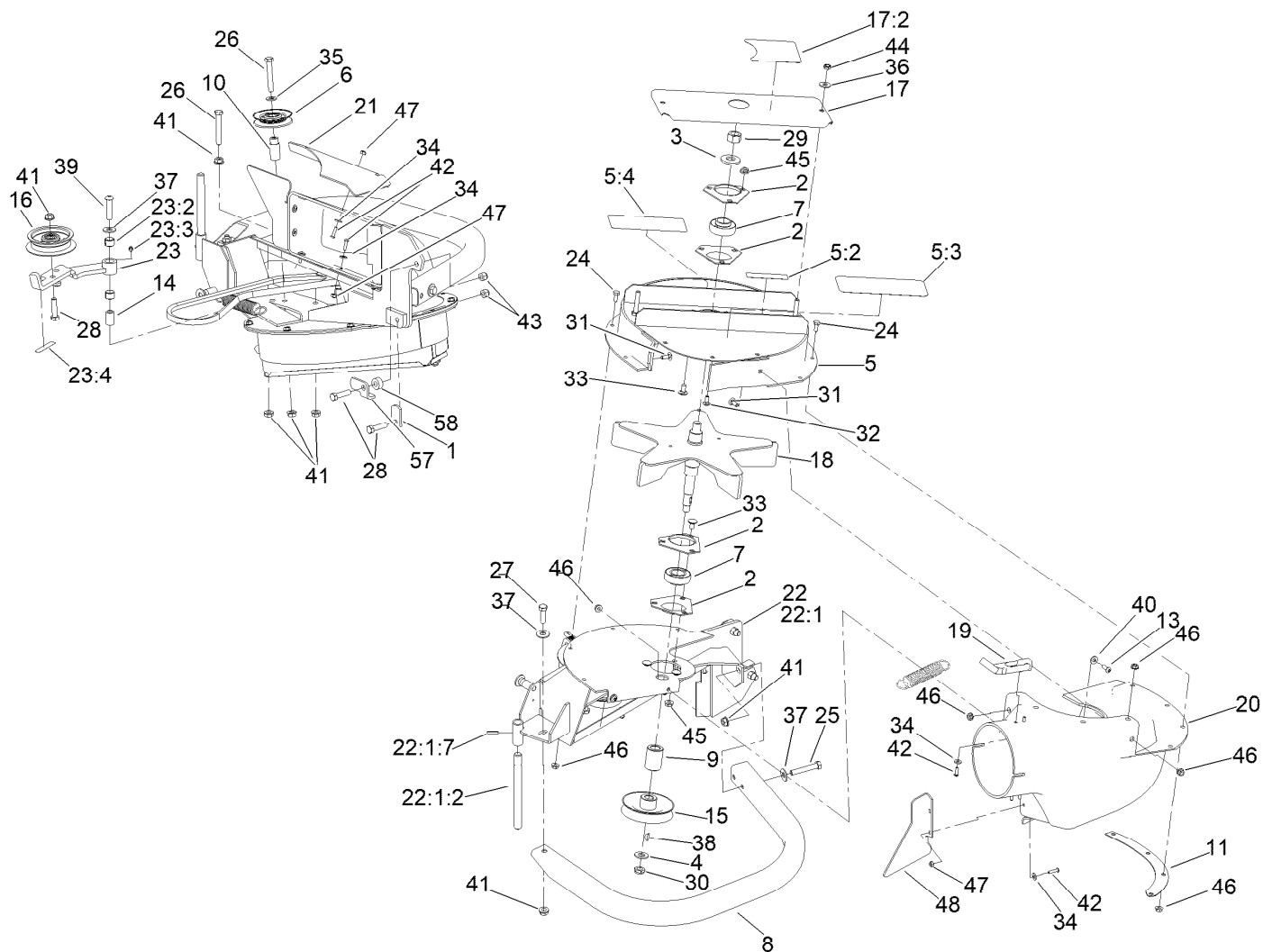


## Blower Assembly

Ref.	Part Number	Qty.	Description
1	1-353054	1	Latch-Catcher, Grass
2	1-513013	4	Housing-Flange
3	1-513208	1	Washer-Spring
4	3256-26	1	Washer-Flat
5	147-2359	1	Housing W/Decal-Upper
5:2	127-2857	1	Decal - Vib, Pinch Warning
5:3	112-1770	1	Decal
5:4	126-9451	1	Decal-Warning
6	1-653322	1	Idler-Inside
7	1-653346	2	Bearing
8	109-1122-01	1	Bumper
9	1-653365	1	Spacer
10	1-653366	1	Hub
11	1-653596-03	1	Plate-Backing, Blower
13	3274-69	2	Screw-HSBH
14	103-0130	1	Bushing-Pivot, Idler
15	112-2345	1	Pulley
16	103-1103	1	Idler-Flat

Ref.	Part Number	Qty.	Description
17	145-1953	1	Cover-Bearing, W/Decal
17:2	126-9595	1	Decal-Warning
18	103-3815	1	Impeller
19	103-4080	2	Latch-Rubber
20	103-4171	1	Chute-Blower, Small
21	112-1761-03	1	Plate-Bottom
22	110-0334-03	1	Blower Mount ASM
22:1		1	Blower-Mount ●
22:1:2	1-353050	1	Shaft-Catcher, Grass
22:1:7	1-806323	1	Pin-Roll
23	117-0345	1	Idler Arm ASM W/Bushings
23:2	1-653600	2	Bushing
23:3	302-19	1	Fitting-Grease
23:4	126-4659	1	Decal-Warning
24	321-3	8	Screw-HH
25	323-11	2	Screw-HH
26	323-12	2	Screw-HH
27	323-7	1	Screw-HH

● Not serviced separately

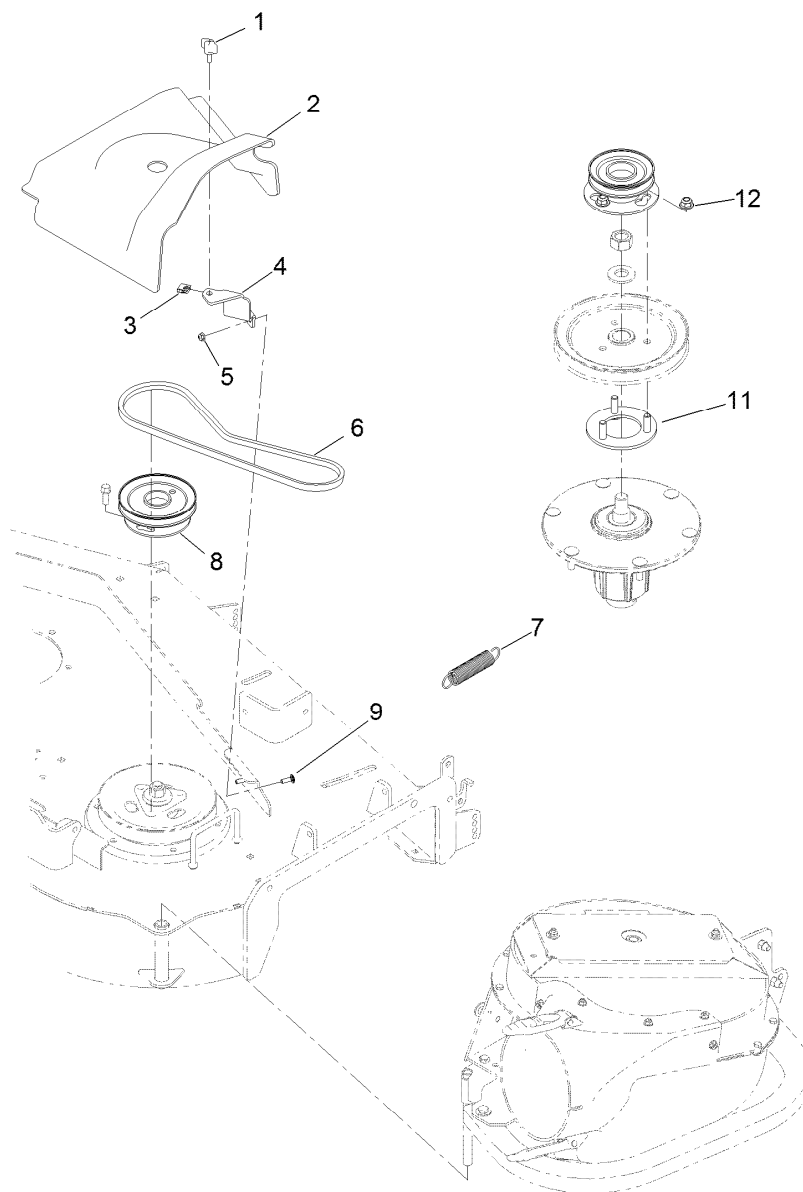


## Blower Assembly (continued)

Ref.	Part Number	Qty.	Description
28	323-8	3	Screw-HH
29	3219-6	1	Nut-Hex
30	3296-28	1	Nut-Lock, NI
31	3229-1	2	Screw-CARR
32	3229-11	3	Screw-CARR
33	3230-18	6	Screw-CARR
34	3256-16	12	Washer-Flat
35	3256-24	1	Washer-Flat
36	3256-3	2	Washer-Flat
37	3256-4	4	Washer-Flat
38	3257-32	1	Key-Woodruff
39	3274-107	1	Screw-HSBH

Ref.	Part Number	Qty.	Description
40	3256-22	2	Washer-Flat
41	3290-357	8	Nut-HSF
42	3274-39	12	Screw-HSBH
43	3296-39	2	Nut-Lock, NI
44	3296-47	2	Nut-Lock, NI
45	32128-20	6	Nut-HF
46	32128-33	15	Nut-HF
47	3296-2	8	Nut-Lock, NI
48	112-1762-03	1	Plate-Filler, Rear
57	112-1787	1	Latch-Stop
58	104-8426	1	Spacer

● Not serviced separately



## Belt, Cover and Pulley Assembly

Ref.	Part Number	Qty.	Description
1	98-8332	1	Knob
2	115-3639	1	Belt Cover
3	609900	1	Nut-Speed
4	115-3637-01	1	Bracket-Cover, Belt
5	104-7201	2	Nut-HF, NI
6	112-2322	1	Belt-V
7	1-603693	1	Spring-Extension
8	112-8668-03	1	Pulley-Blower
9	1-807512	2	Bolt-CARR
11	140-4906	1	Pulley Mount ASM
12	104-8301	3	Nut-HF, NI

**Notes:**



**Count on it.**